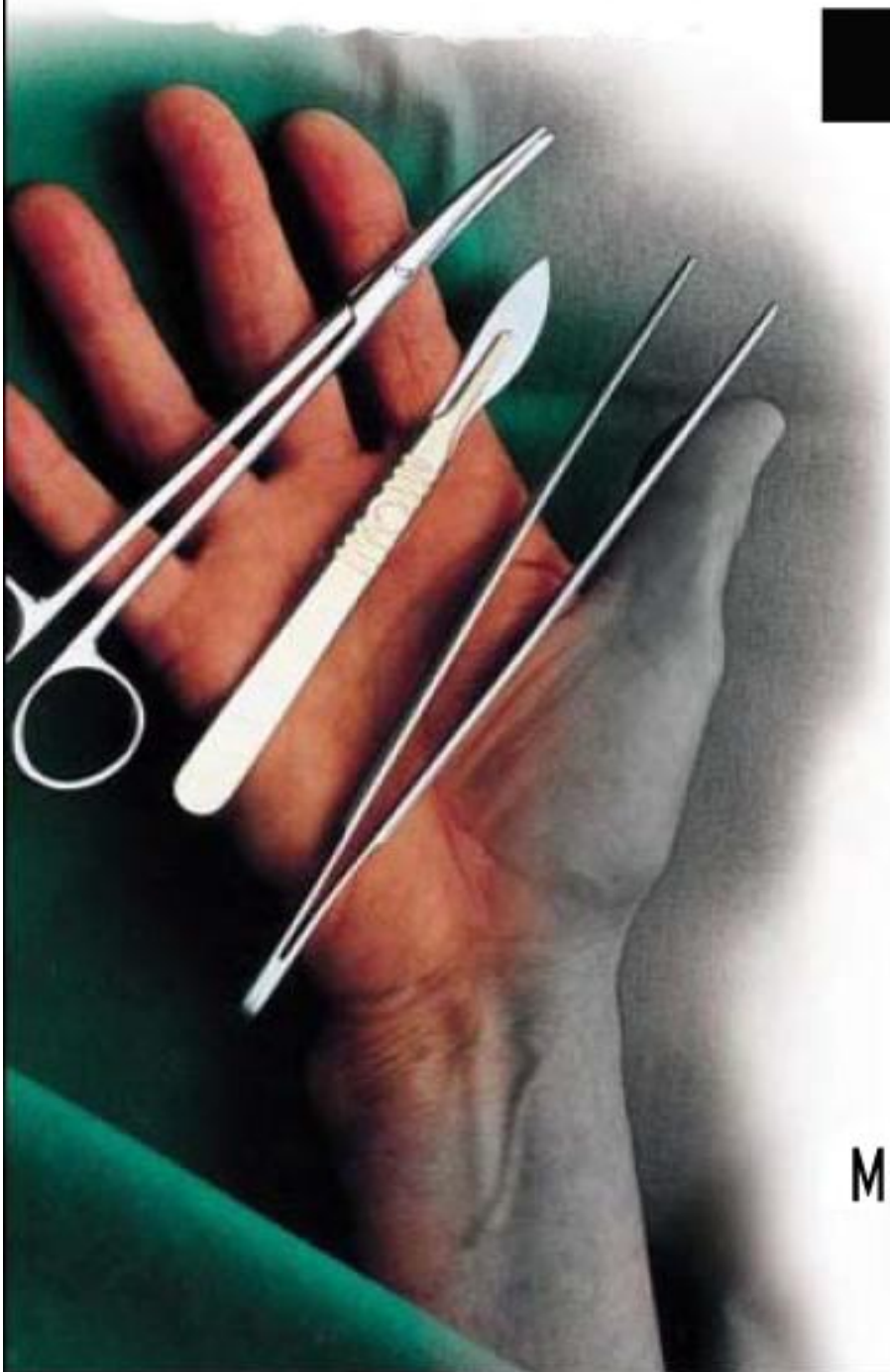


Anatomy

Practical

Part 2



Mo3ath M Alsaiady

Special Thanks To:

Ahmed Al-Mazrou

Bilal Marwa

Mohammed Al- Otaibi

AbdulAziz Al- Baktain

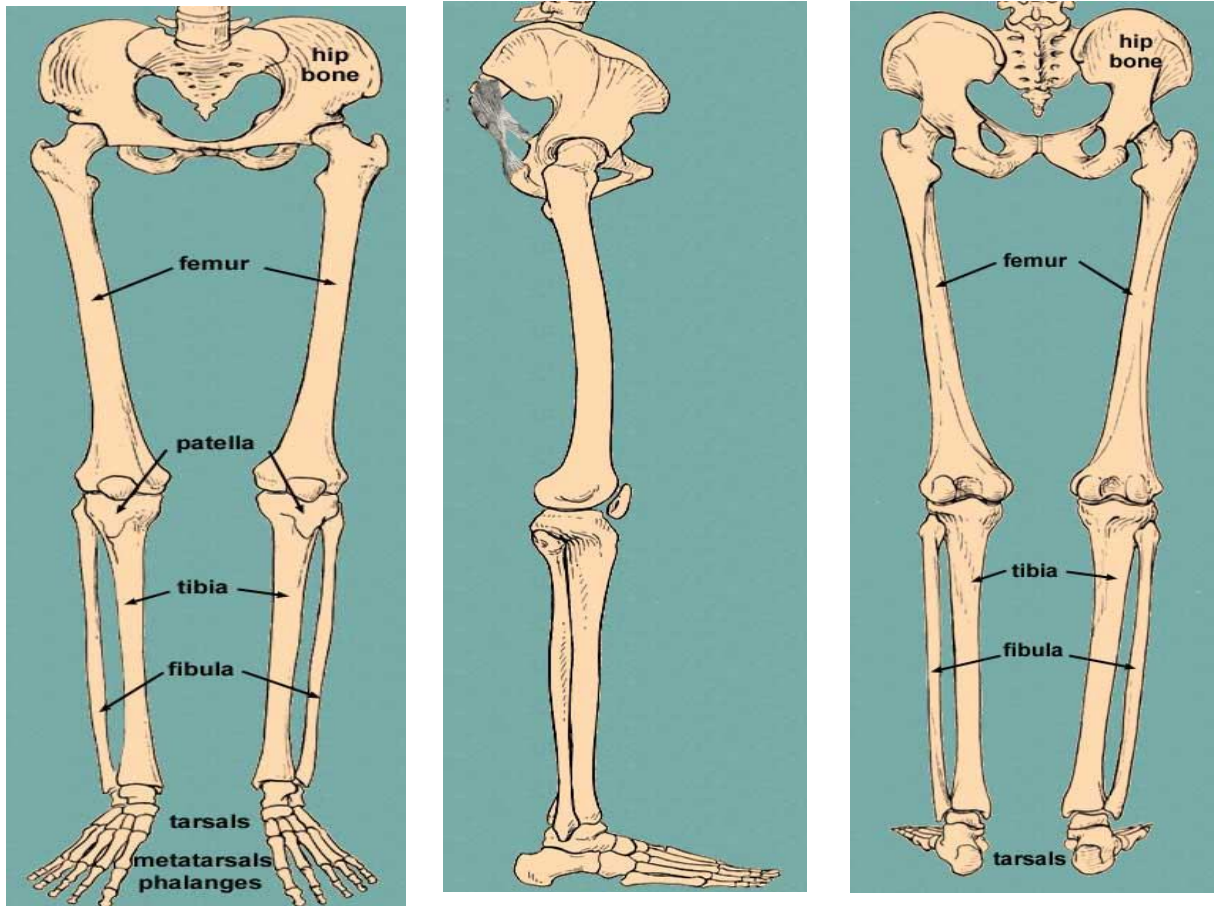
Waleed Al-Khaldi

Mohammad Al-Kharfi

Practical 17

Bones of the Lower Limb, Anterior compartment of Thigh & Femoral Triangle

Bones of the Lower Limb

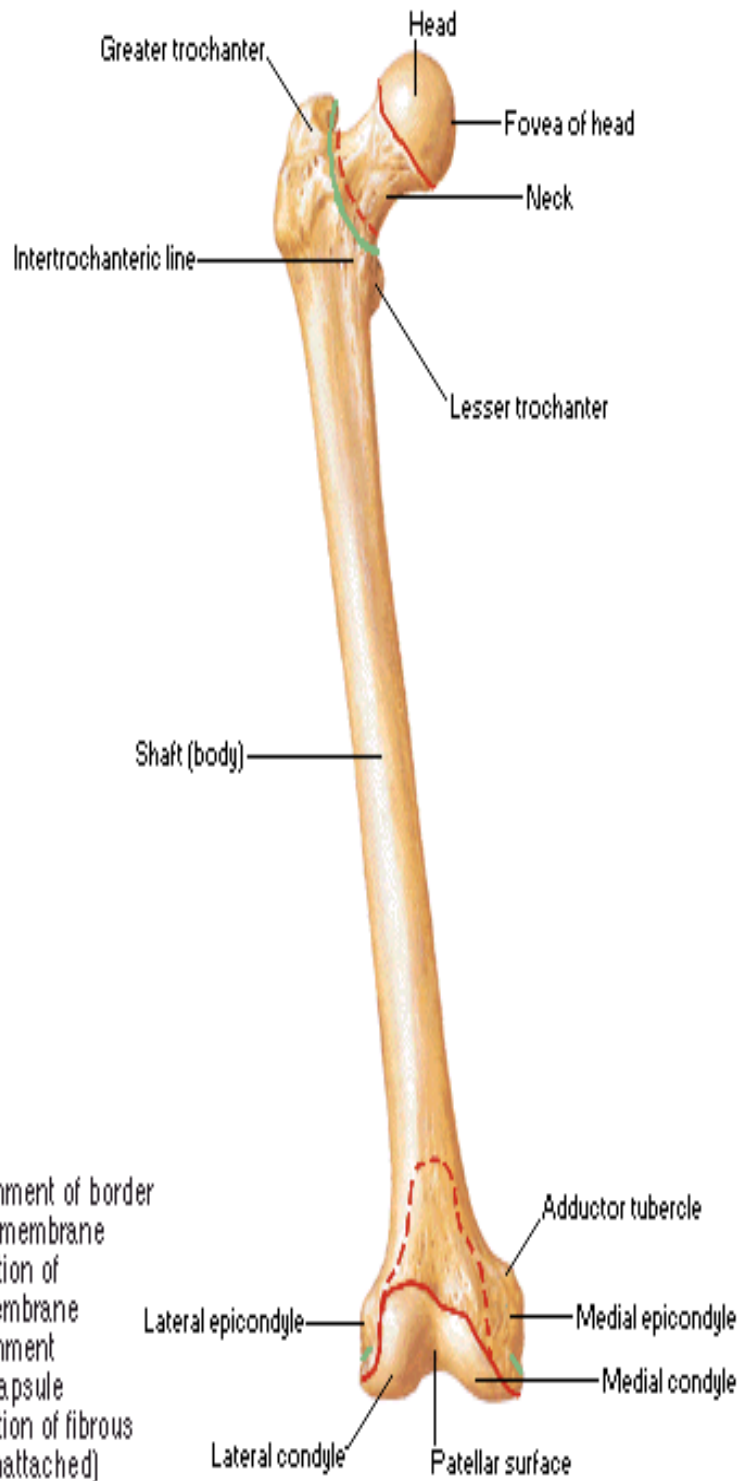


There are 32 bones found in the lower limb:

- hip bone (1)
- femur (1)
- patella (1)
- tibia (1)
- fibula (1)
- tarsals (8)
- metatarsals (5)
- proximal phalanges (5)
- intermediate phalanges (5)
- distal phalanges (4)

Femur

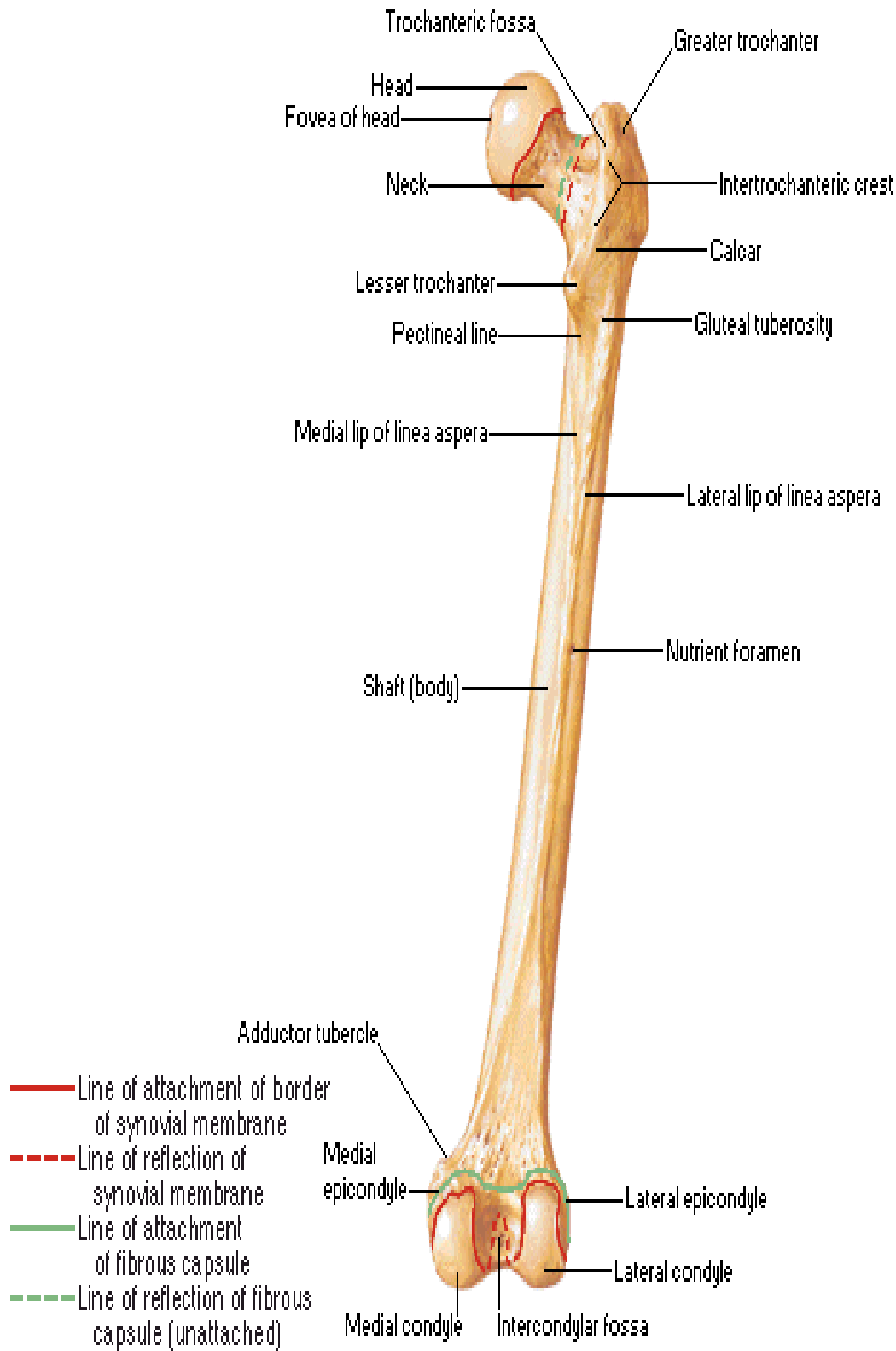
Anterior View



F. Netter
©Novartis

Femur

Posterior View



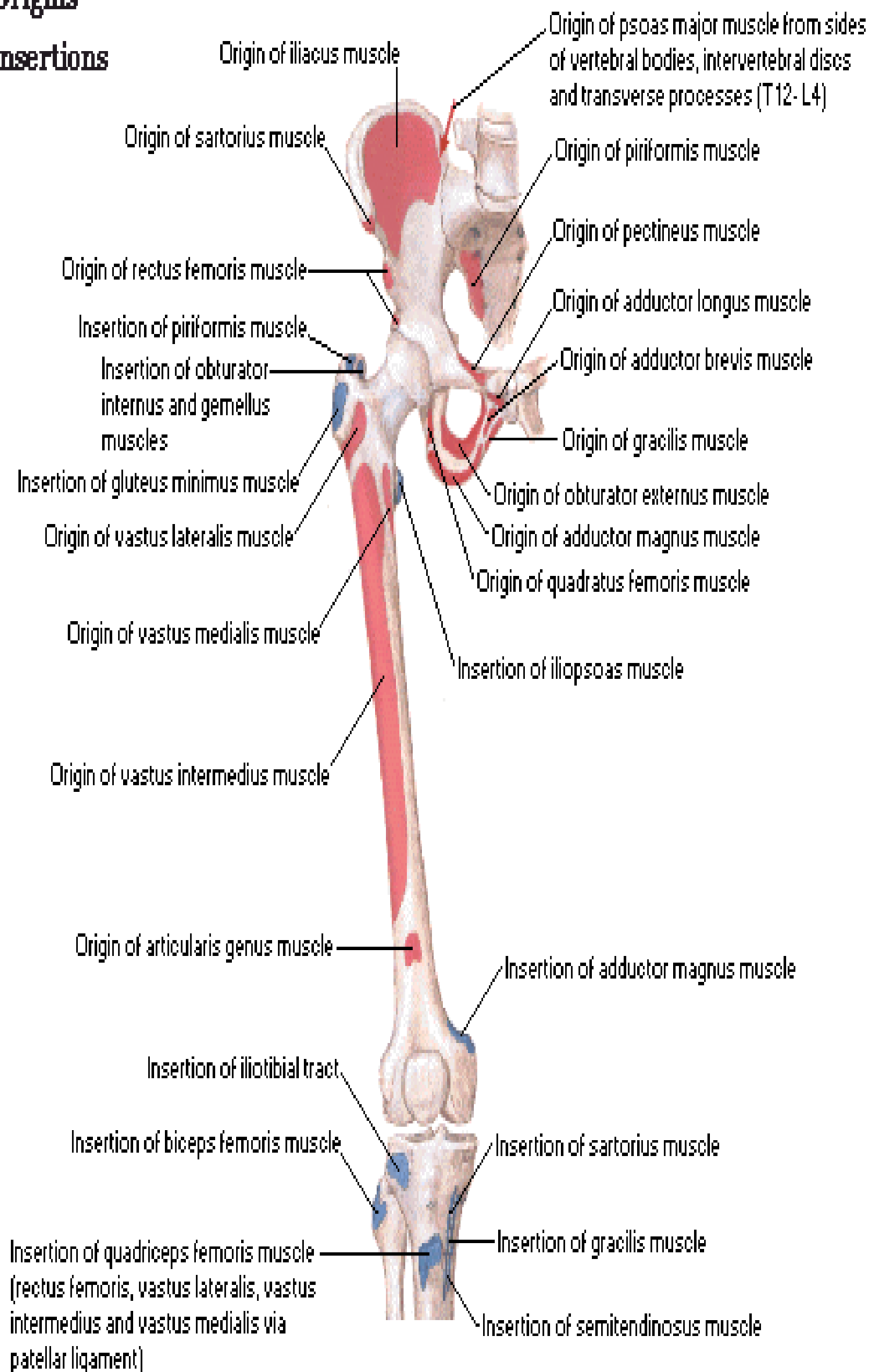
Dr. Nour
@Hovartis

Bony Attachments of Muscles of Hip and Thigh

Origins

Insertions

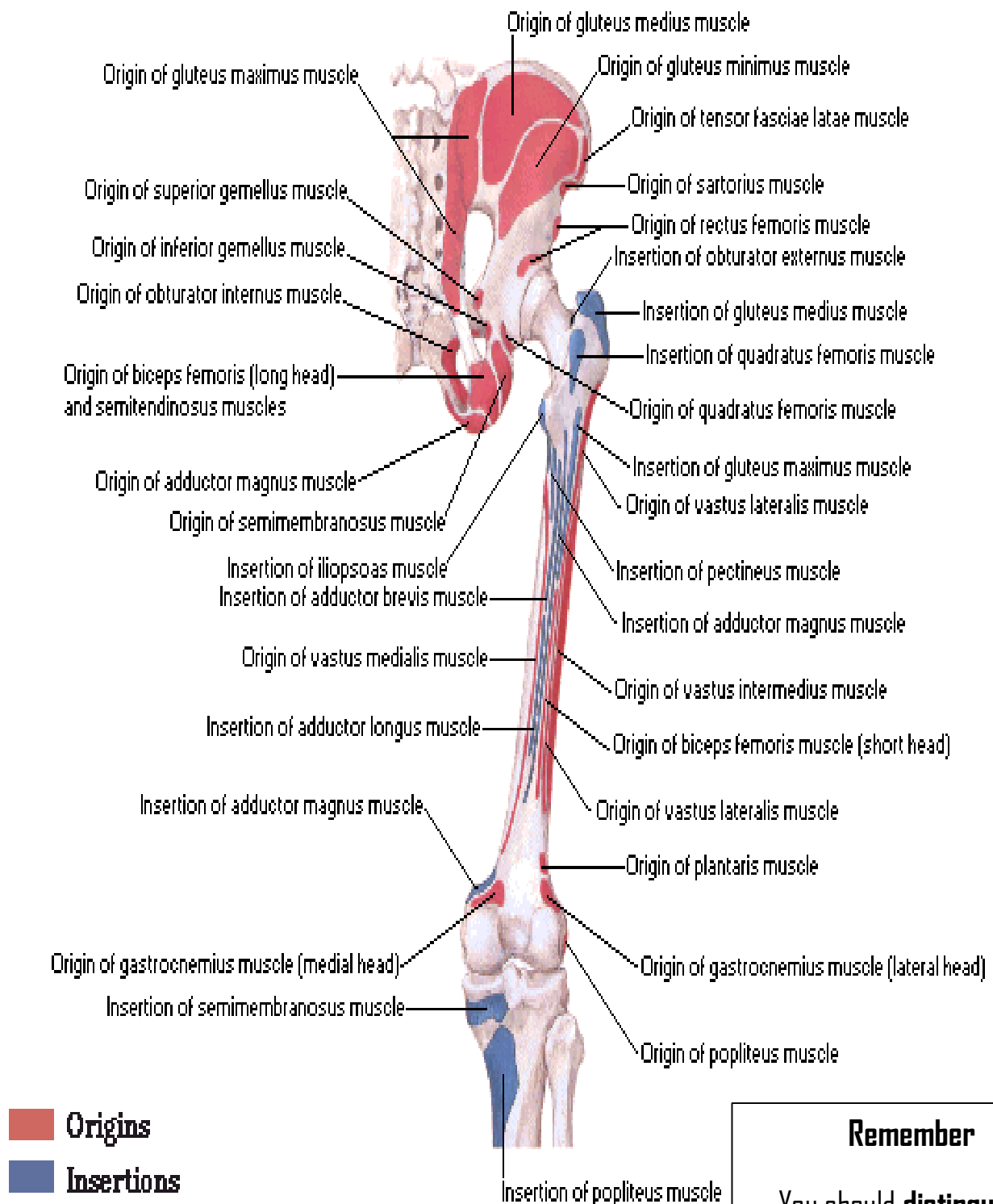
Anterior View



Handwritten signature
@Nwartis

Bony Attachments of Muscles of Hip and Thigh

Posterior View



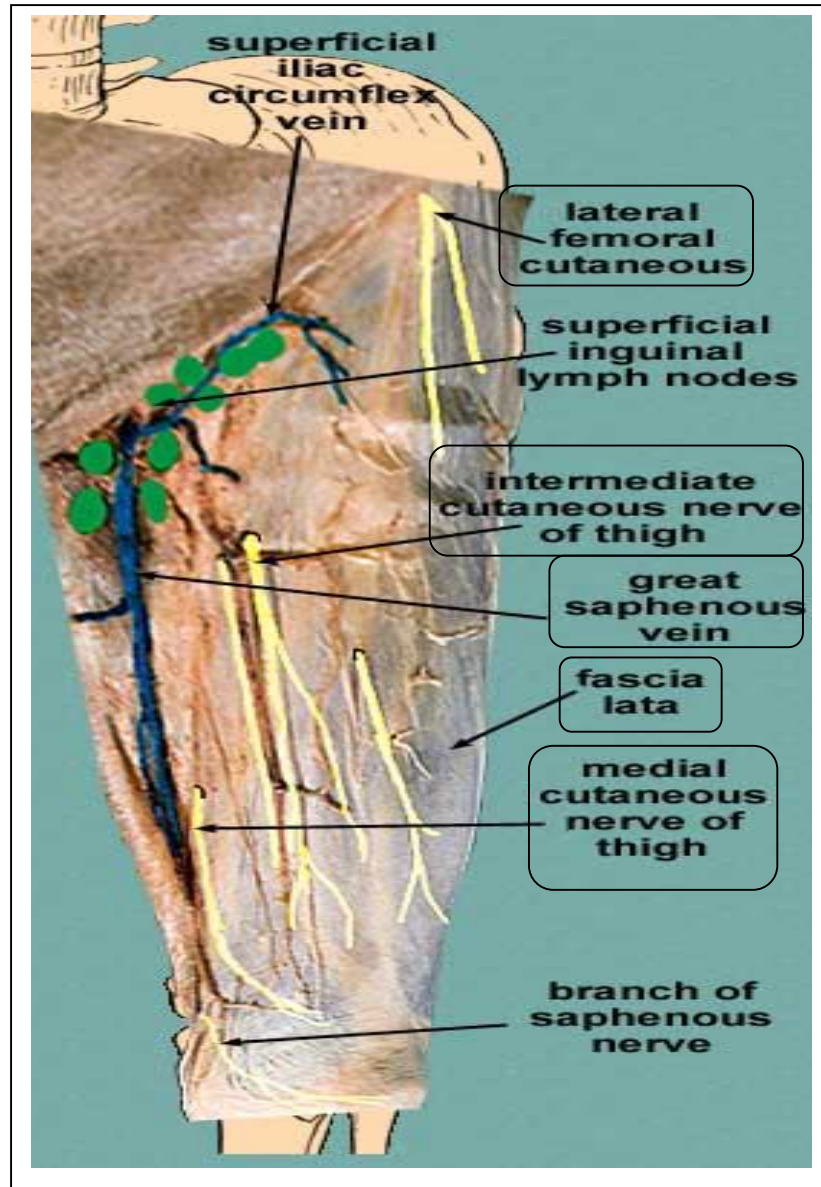
Remember

You should **distinguish** Between:

The right & left femur .

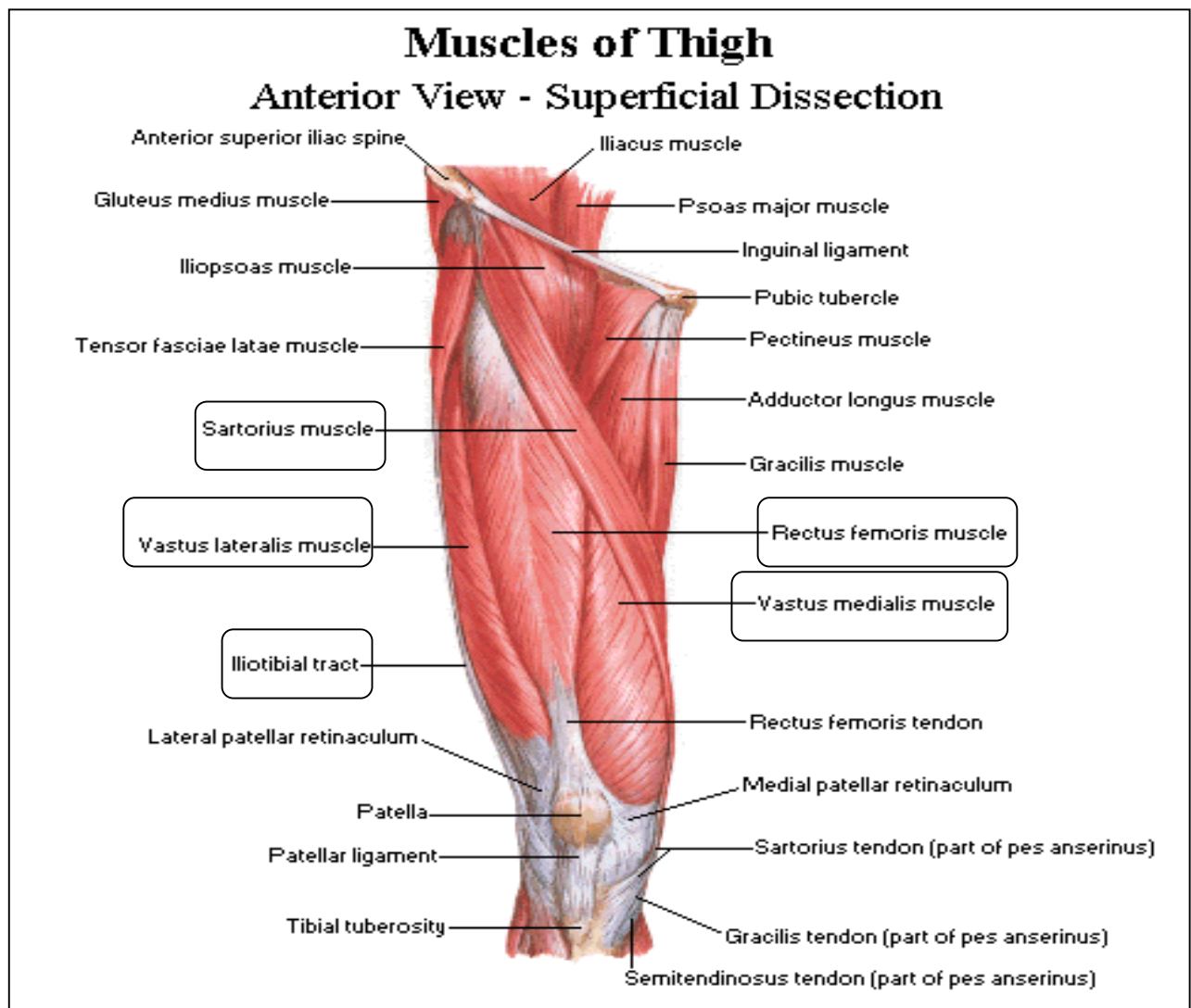
Anterior compartment of Thigh

After removing the skin from the anterior thigh, you can identify the :



- fascia lata .
- great saphenous vein .
- lateral cutaneous nerve of the thigh.
- intermediate cutaneous , branches of the femoral nerve .
- medial cutaneous , branches of the femoral nerve .

You should identify The four heads of the quadriceps femoris muscle which are:



- rectus femoris .
- vastus lateralis .
- vastus medialis .
- vastus intermedius (**under rectus femoris**) .

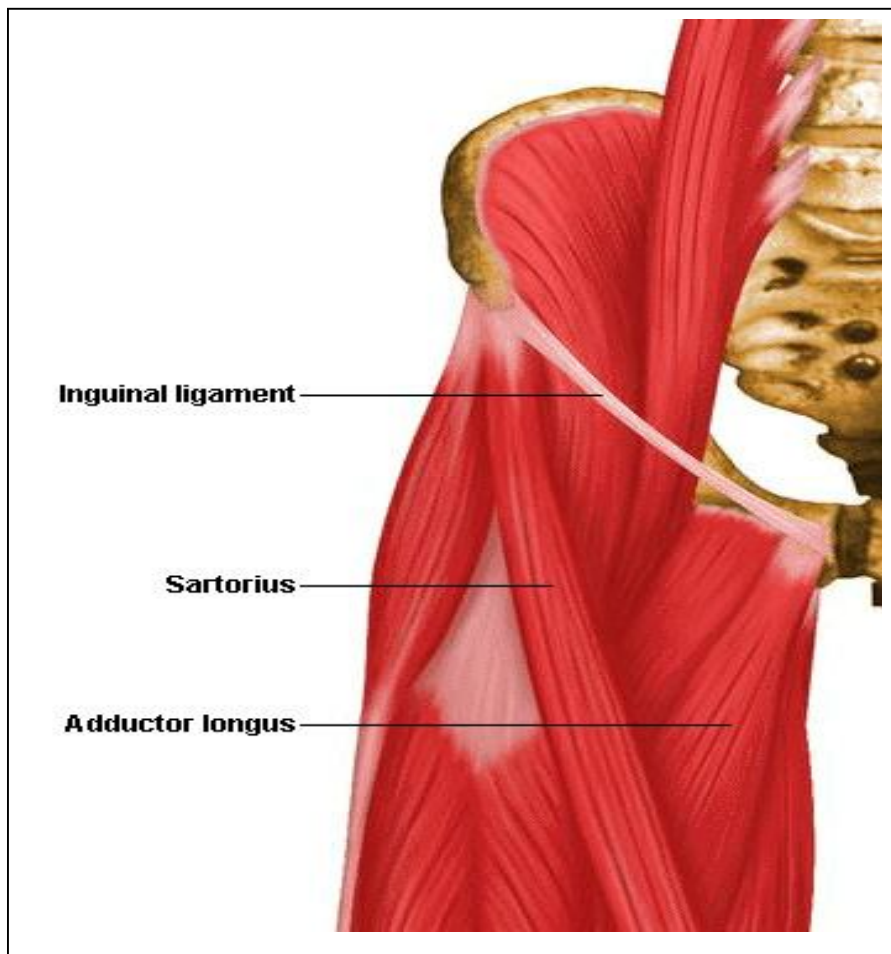
You should identify also the :

- Sartorius muscle .
- Tensor fasciae latae & iliotibial tract .

Femoral Triangle

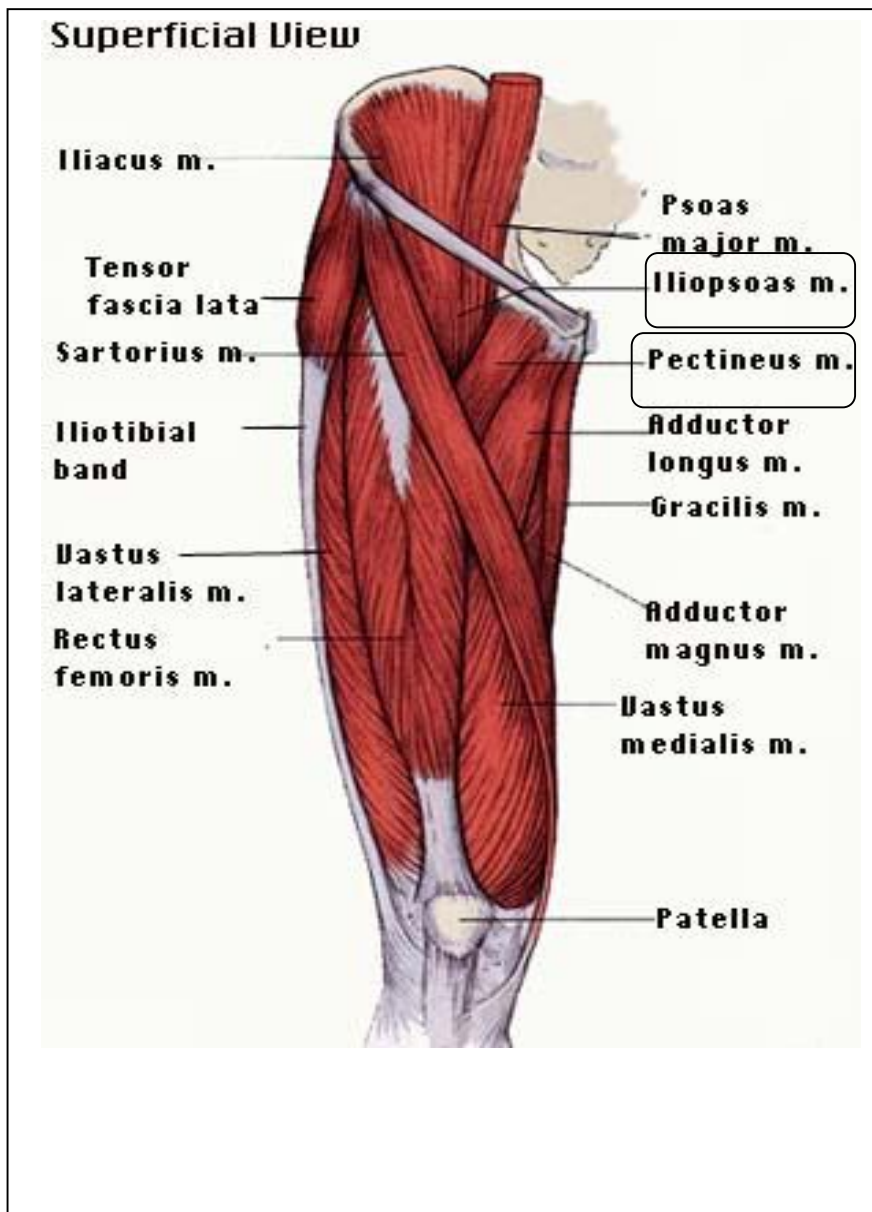
You should identify :

its boundaries



- inguinal ligament .
- sartorius .
- adductor longus .

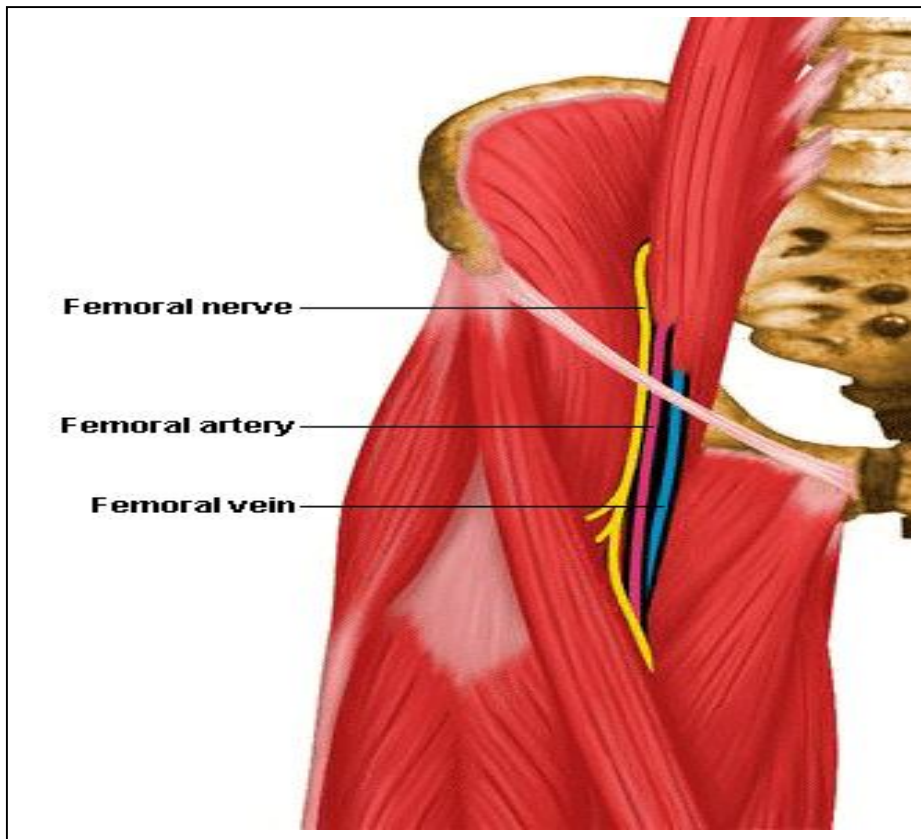
its floor



- iliopsoas muscle .

- pectineus muscle .

its contents



From **Lateral To Medial** :

- femoral nerve .
- femoral artery .
- femoral vein .
- femoral ring (usually contains a lymph node) .

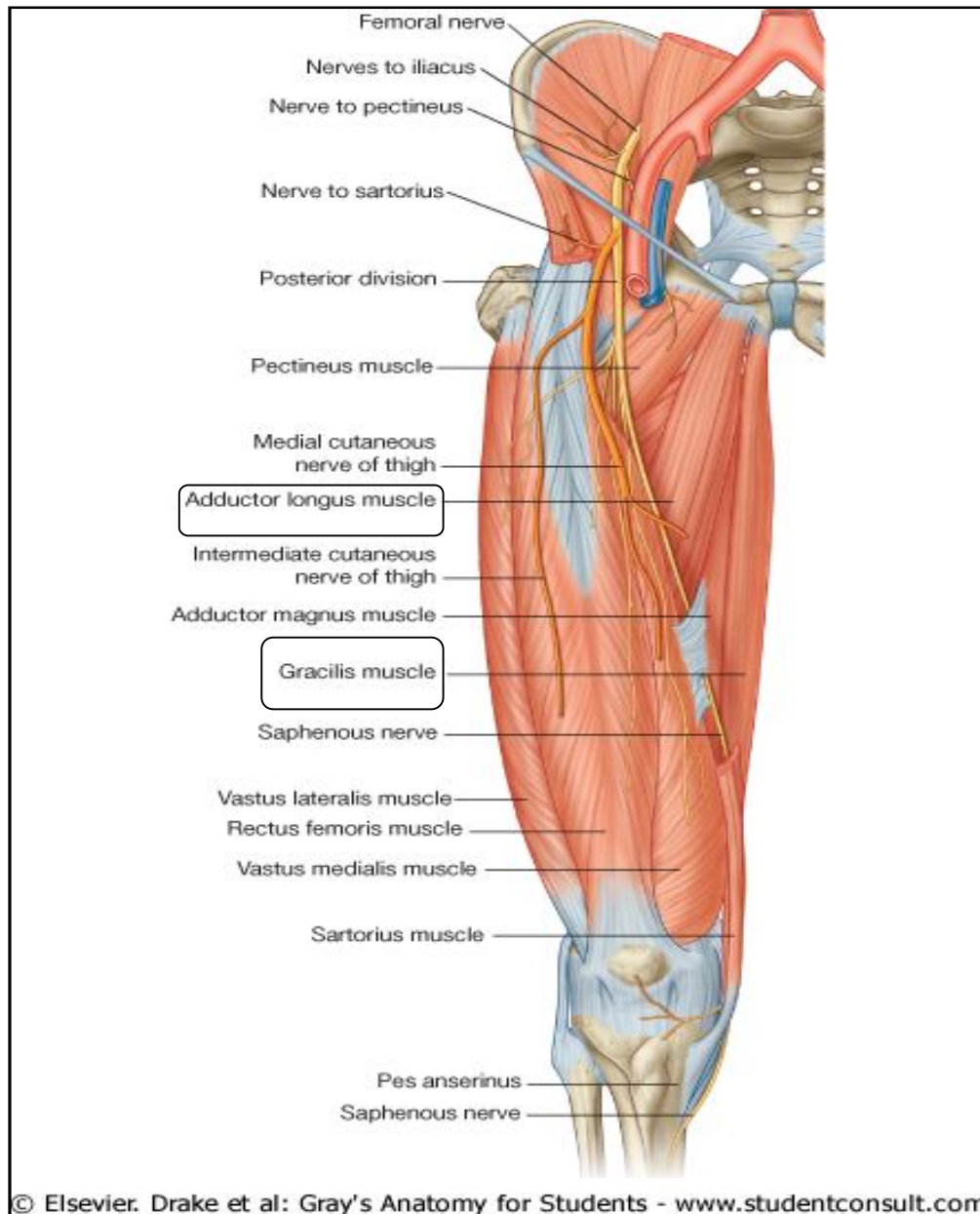
The last three structures are found in a sheath of deep fascia that has extended down from the abdominal wall, the femoral sheath. The sheath contains the following items, from lateral to medial:

- femoral artery .
- femoral vein .
- femoral canal (usually containing a lymph node).

Practical 18

Medial compartment of Thigh

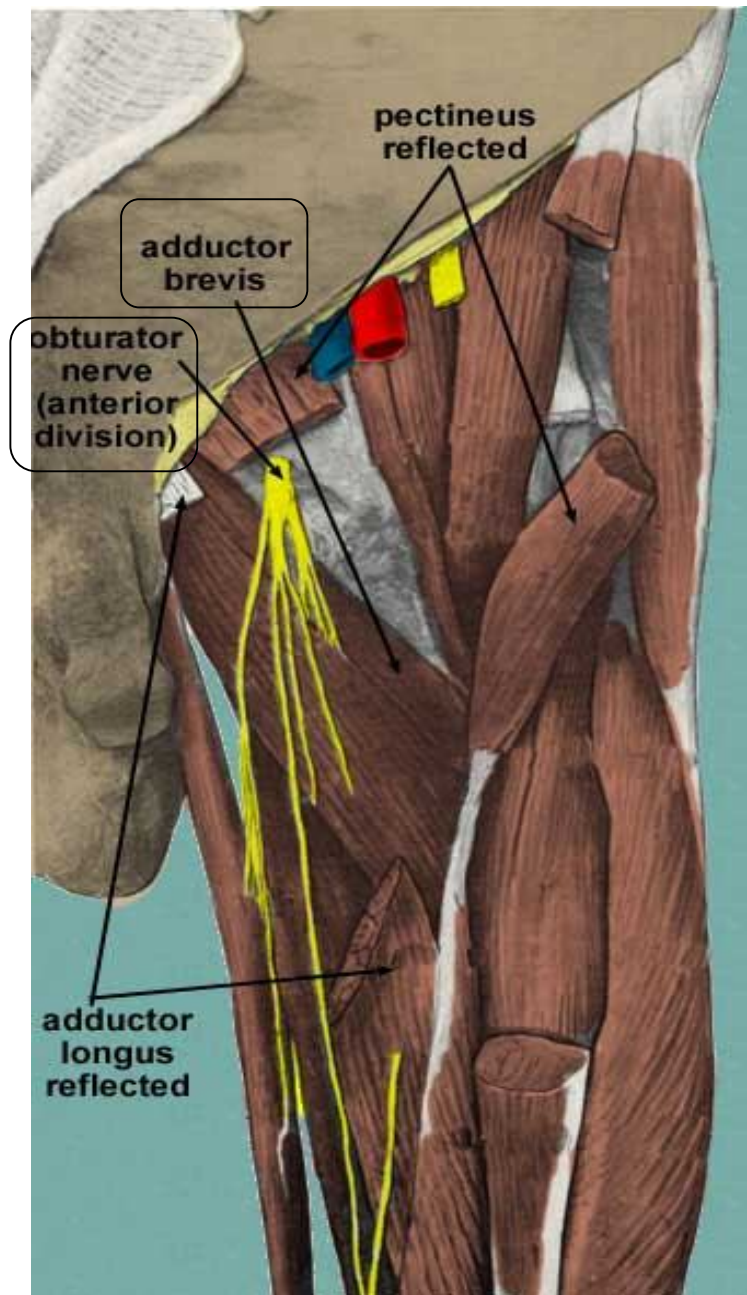
The superficial layer of adductor muscles, You should identify the :



- gracilis .

- adductor longus .

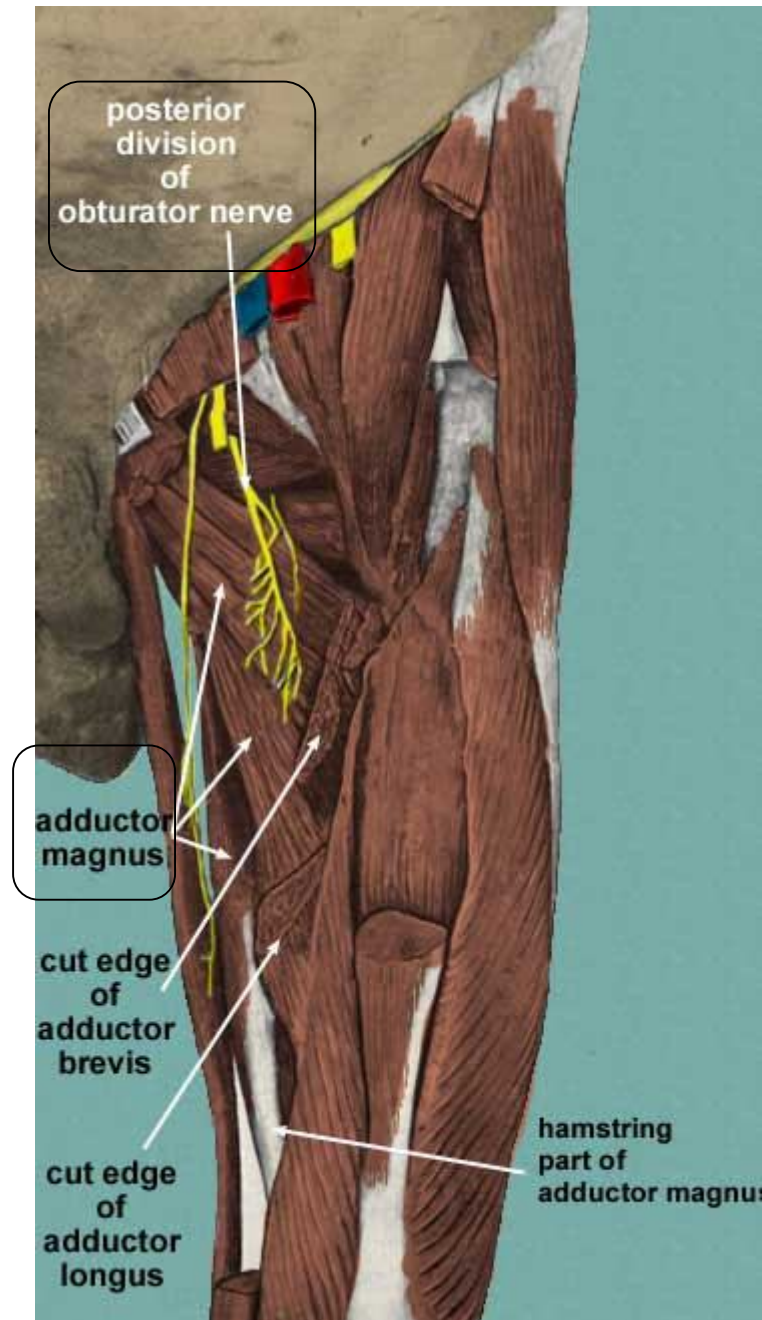
The second layer of muscles can be identified :



- adductor brevis .

Note that : you can see the anterior division of obturator nerve lying on the anterior surface of the adductor brevis muscle.

The deepest and largest muscle in the medial compartment is :



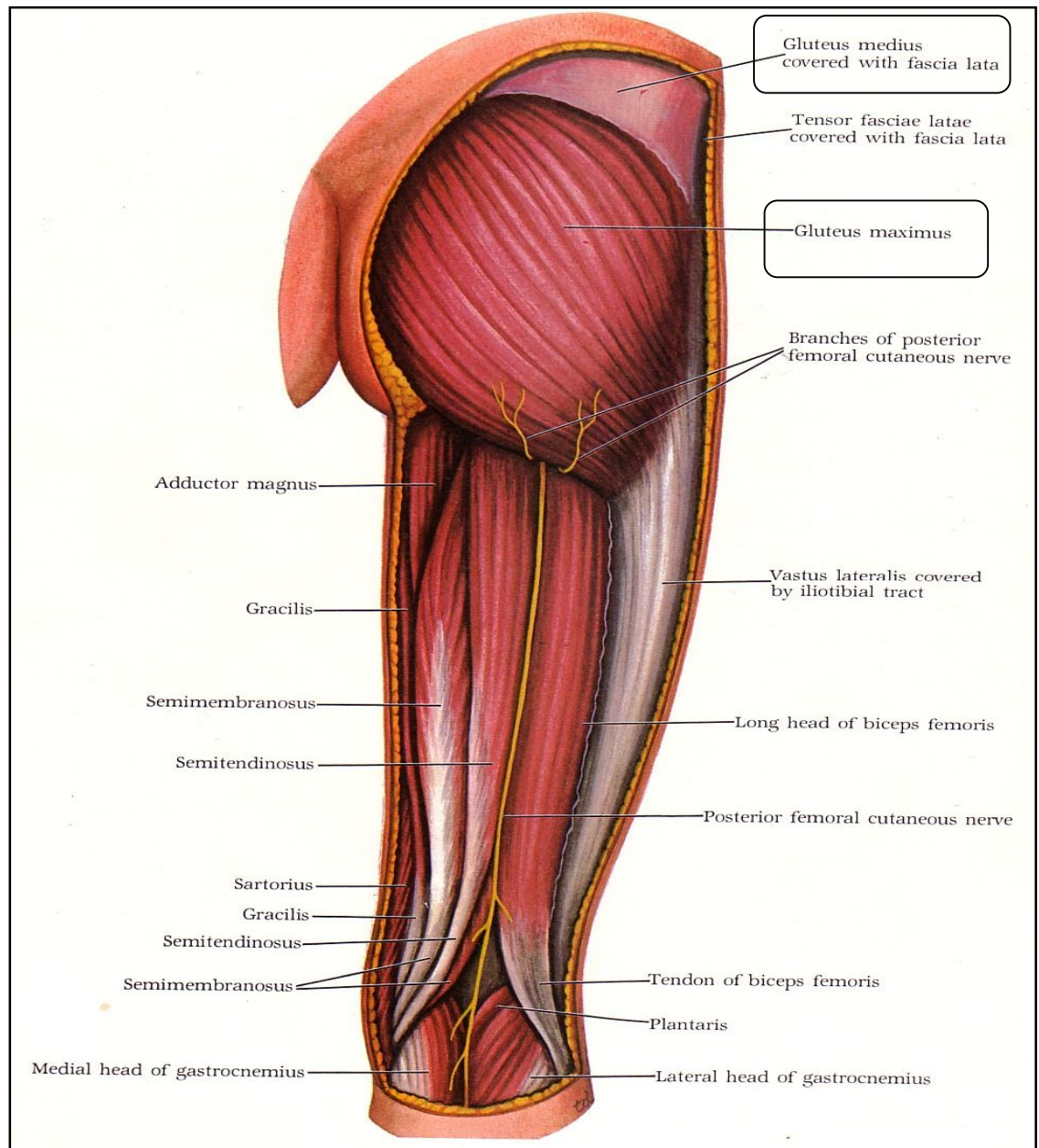
- adductor magnus .

Note that : you can see the posterior division of obturator nerve behind the Adductor brevis & on the front of the Adductor magnus.

Practical 19

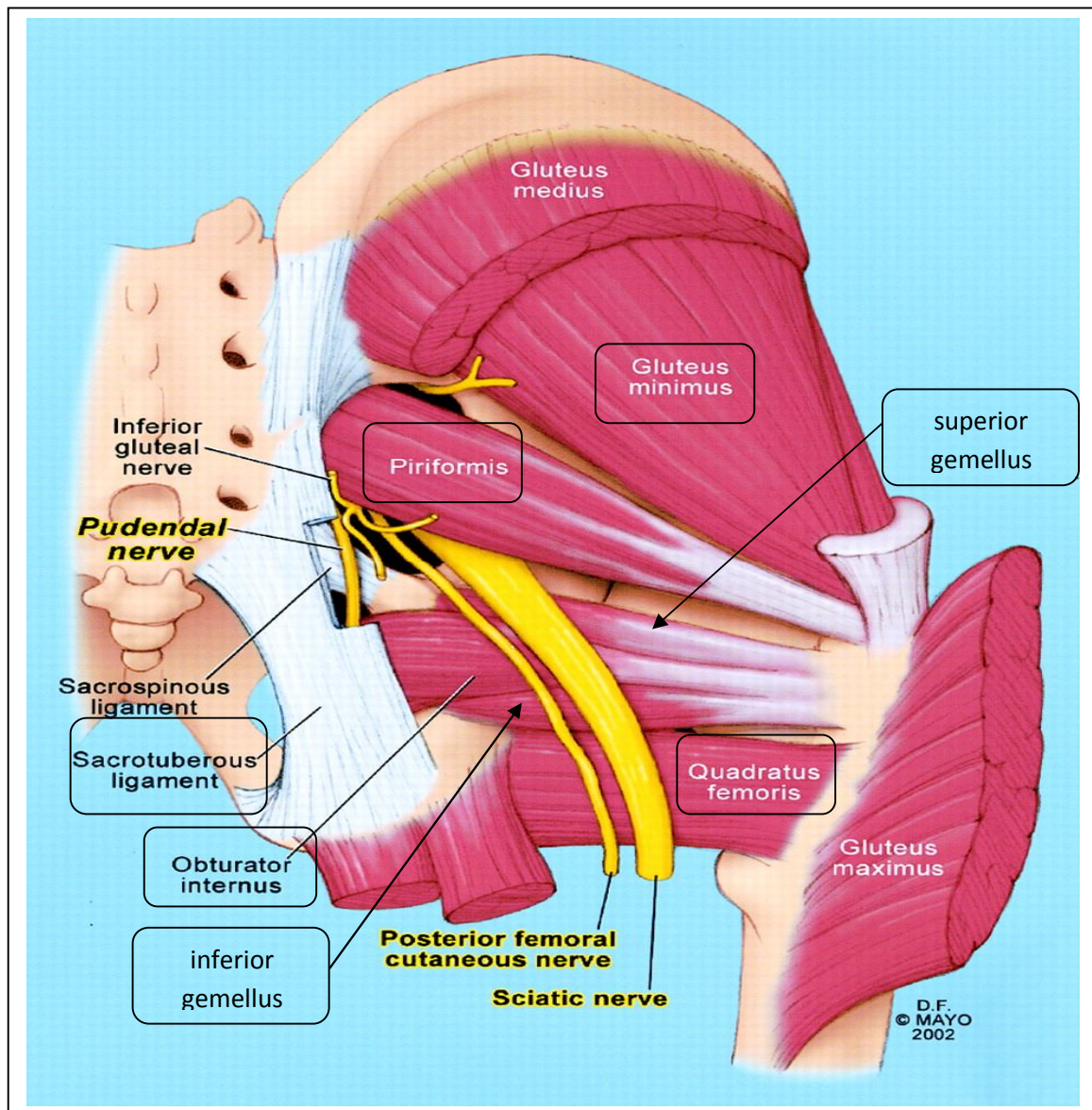
Gluteal Region

Starting from superficial and going deep , you should identify the following muscles:



- gluteus maximus .

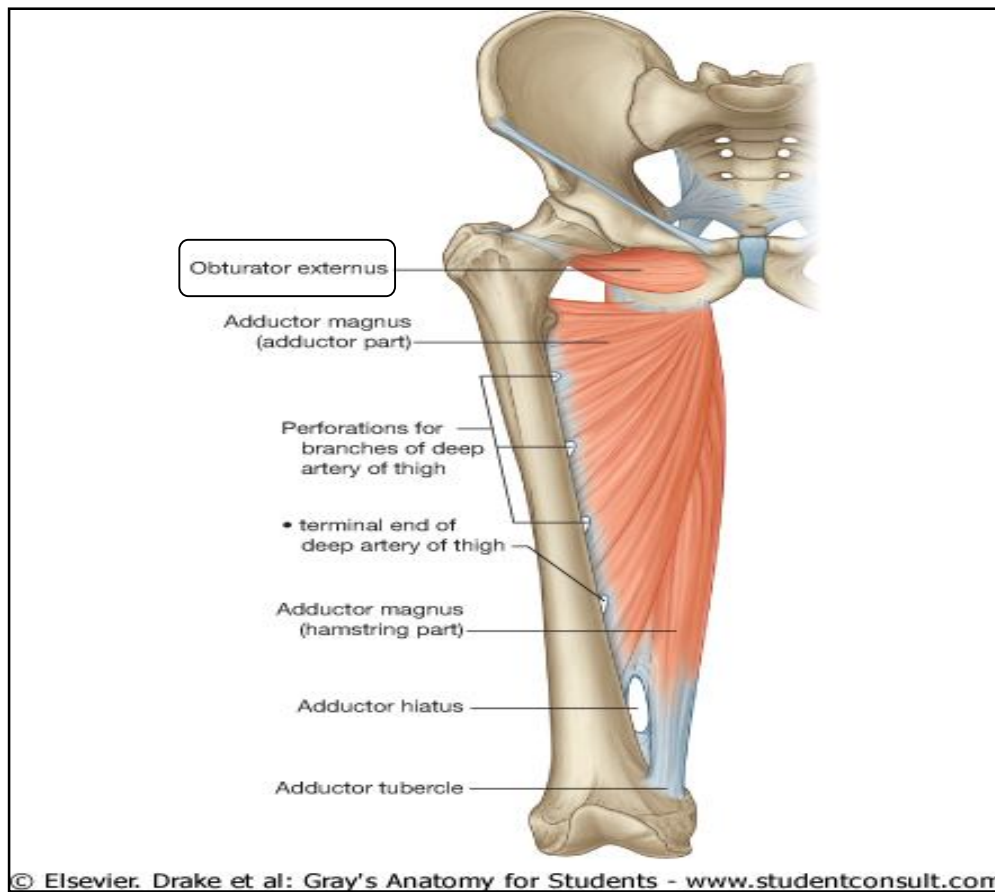
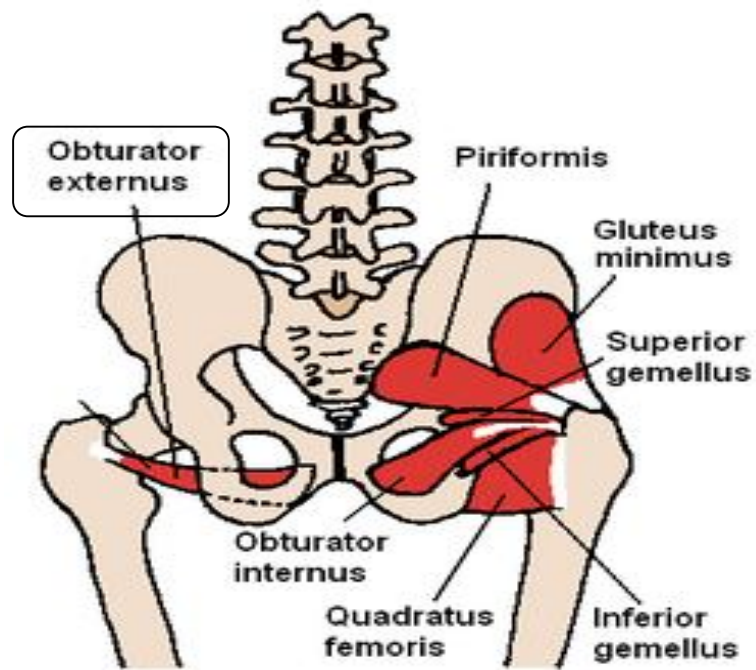
- gluteus medius.



- gluteus minimus .
- piriformis .
- superior gemellus .
- obturator internus .
- inferior gemellus .
- quadratus femoris.

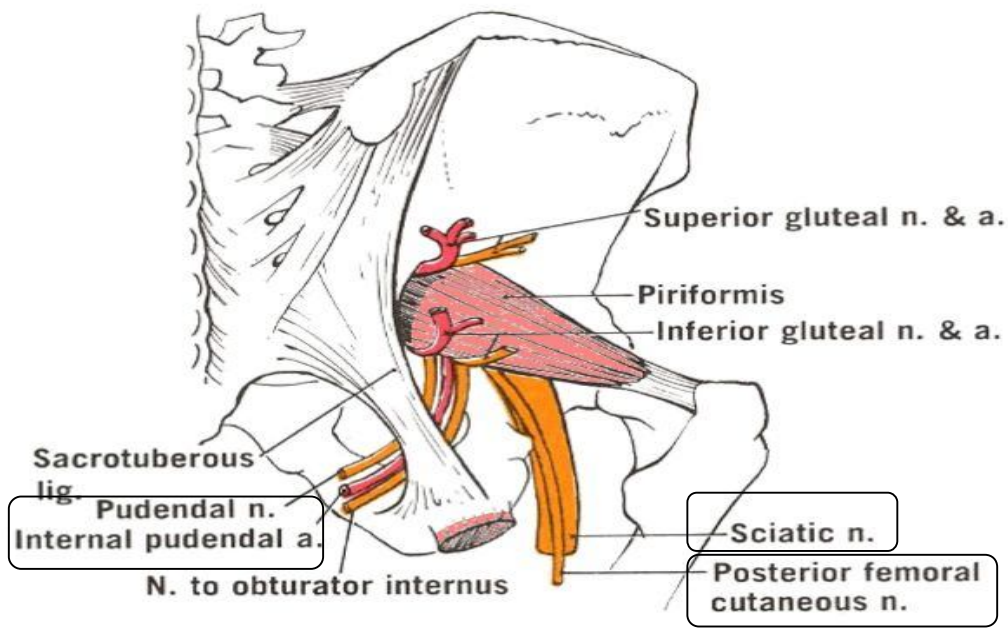
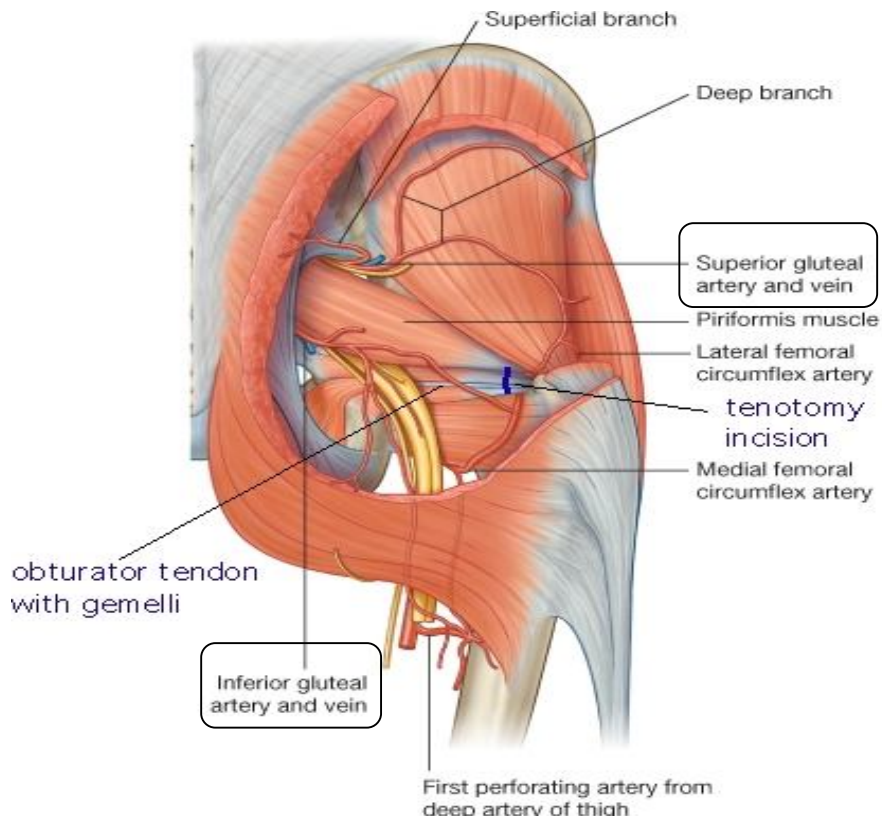
you should identify also the :

- sacrotuberous ligament .



- obturator externus .

Arteries , Veins & Nerves of the Gluteal Region , You should identify the :

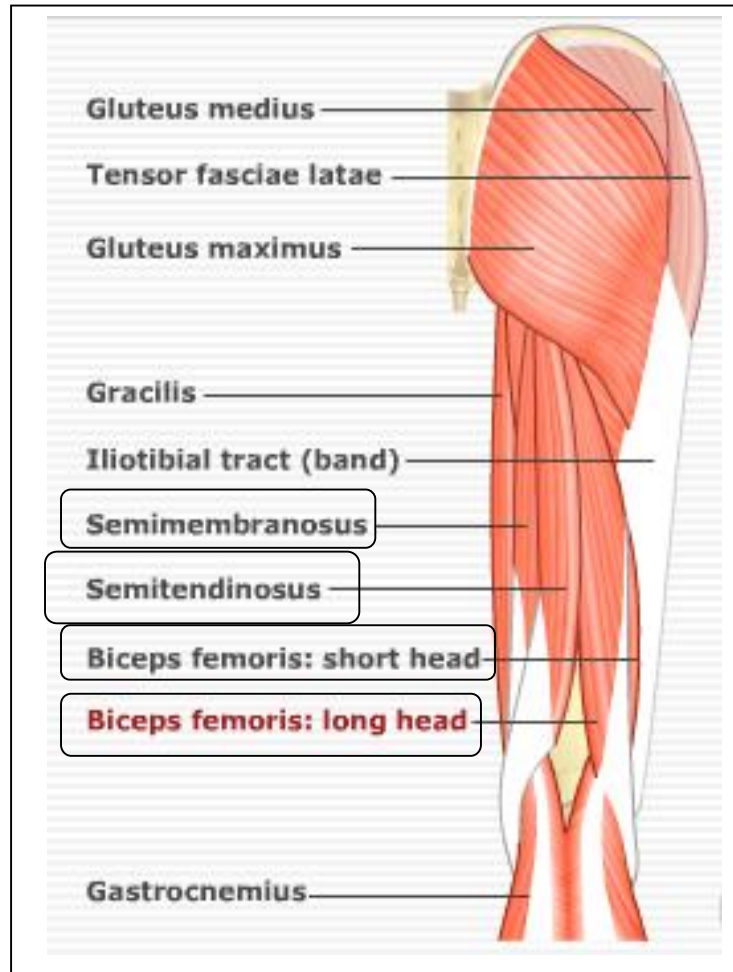


- superior gluteal nerve & vessels .
- inferior gluteal nerve & vessels .
- internal pudendal artery .
- pudendal nerve .
- sciatic nerve .
- posterior femoral cutaneous .

Practical 18

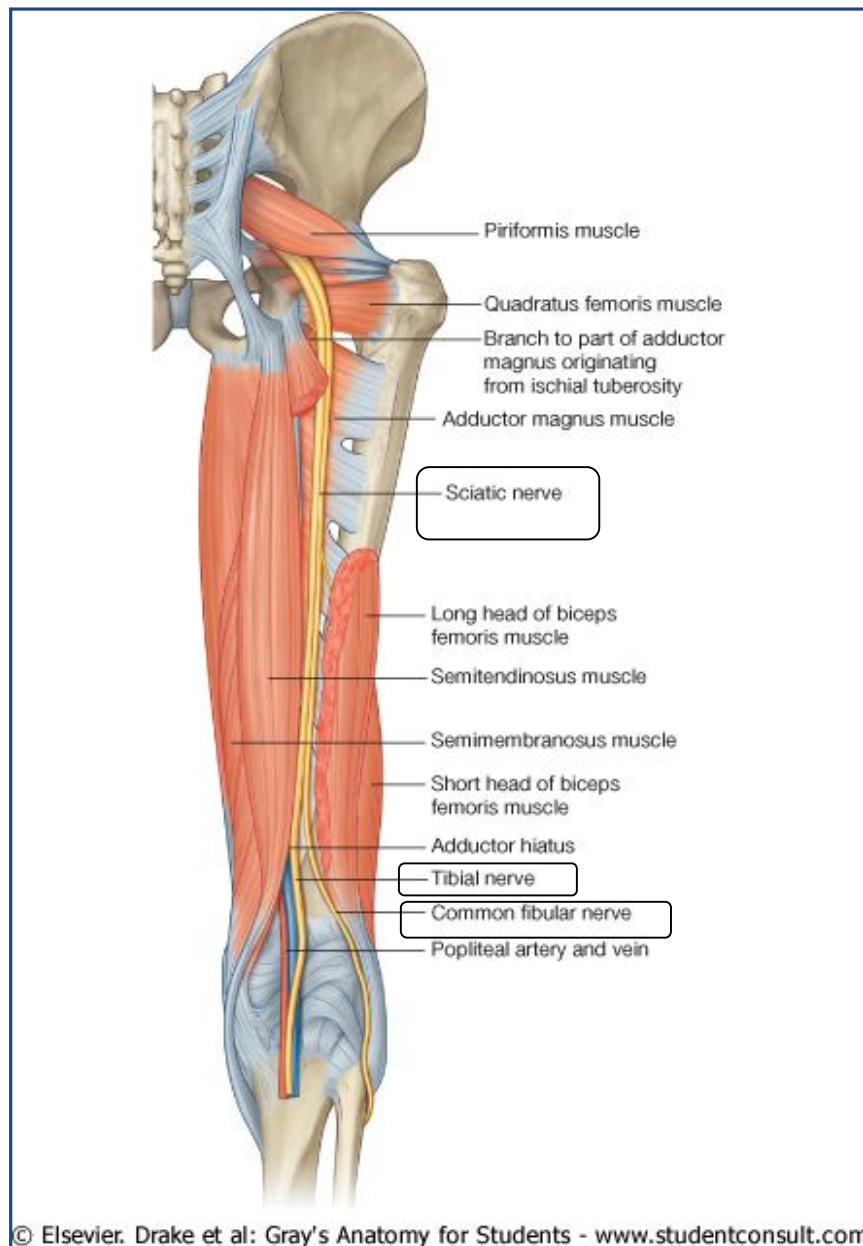
Back of Thigh & Popliteal fossa

You should identify the hamstrings :



- biceps femoris (long & short heads) .
- semimembranosus .
- semitendinosus .
- hamstring part of the adductor magnus (**not shown in the diagram**) .

You should identify the :

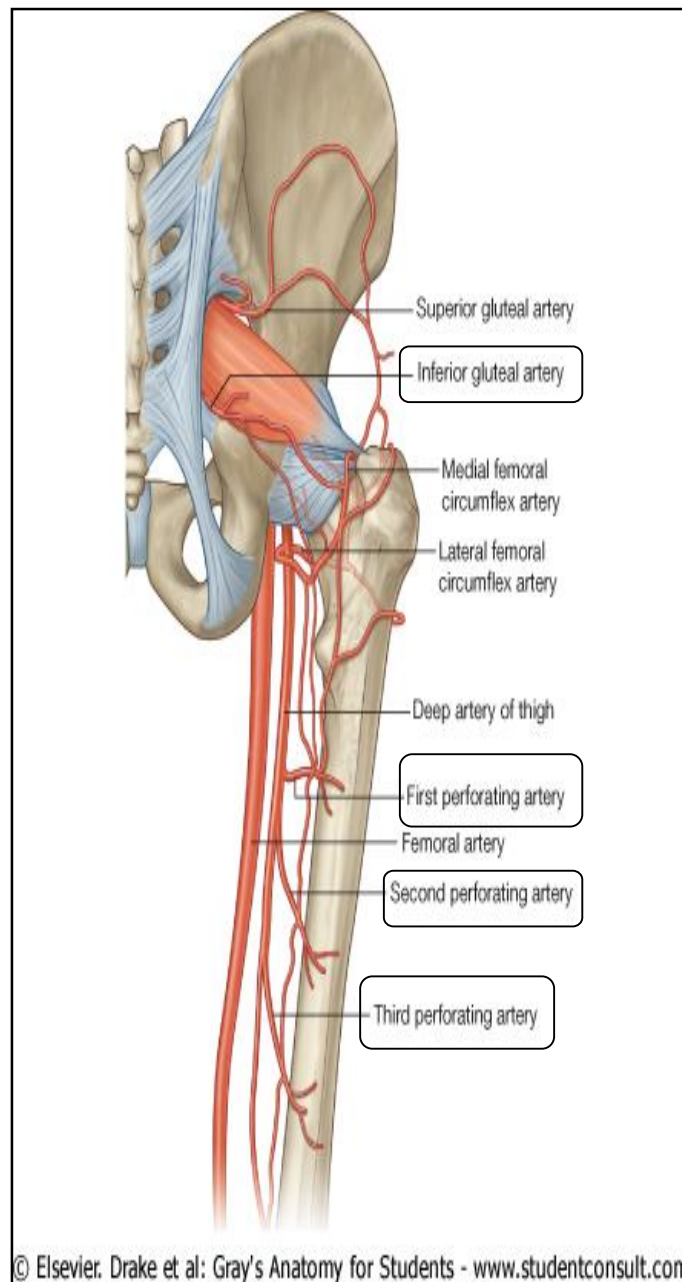


- **sciatic nerve** which gives :

- tibial nerve .

- common peroneal (fibular) nerve .

You should identify the :

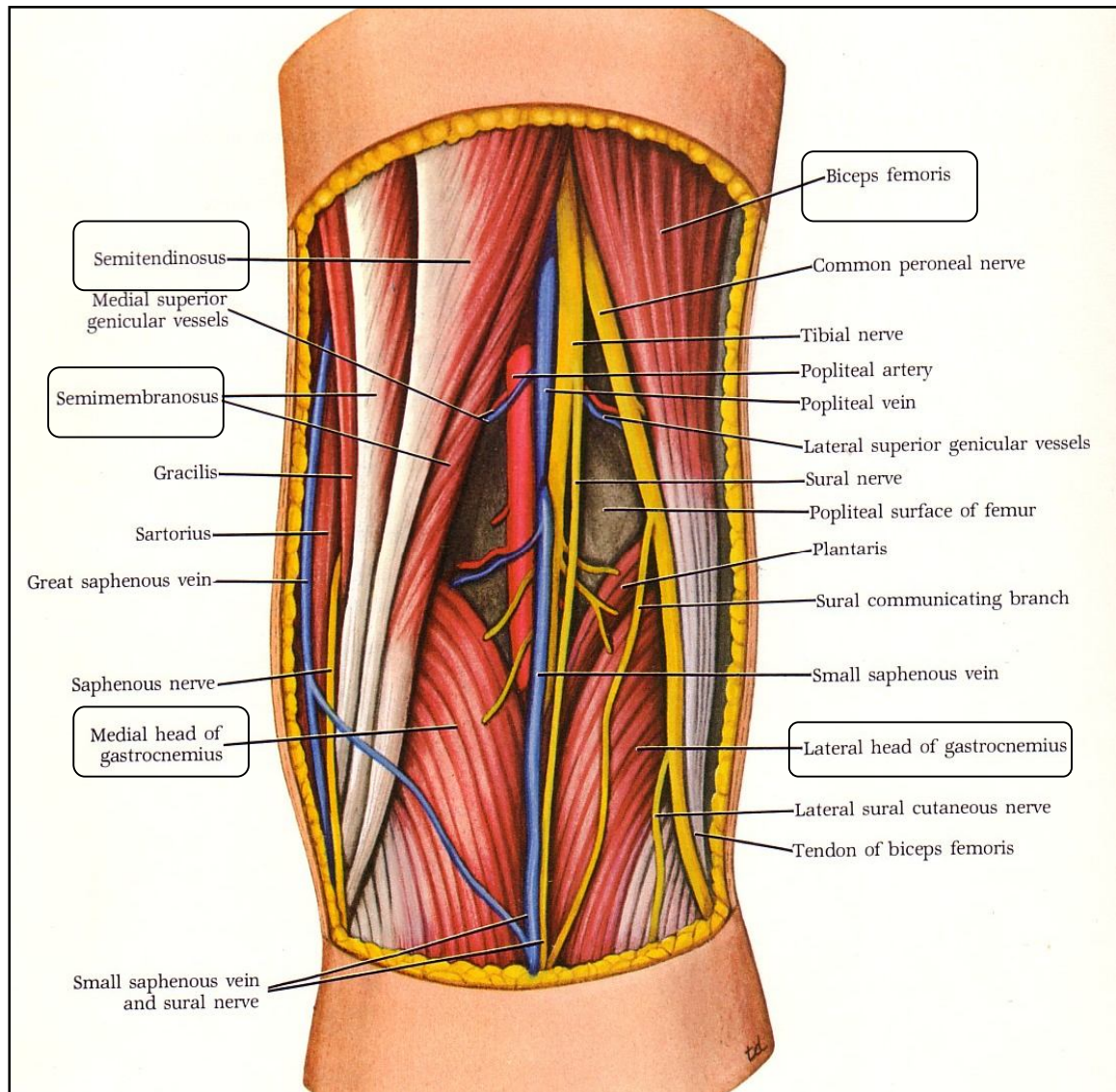


- inferior gluteal artery (upper posterior compartment) .
- perforating branches of the profunda femoris .

Popliteal fossa

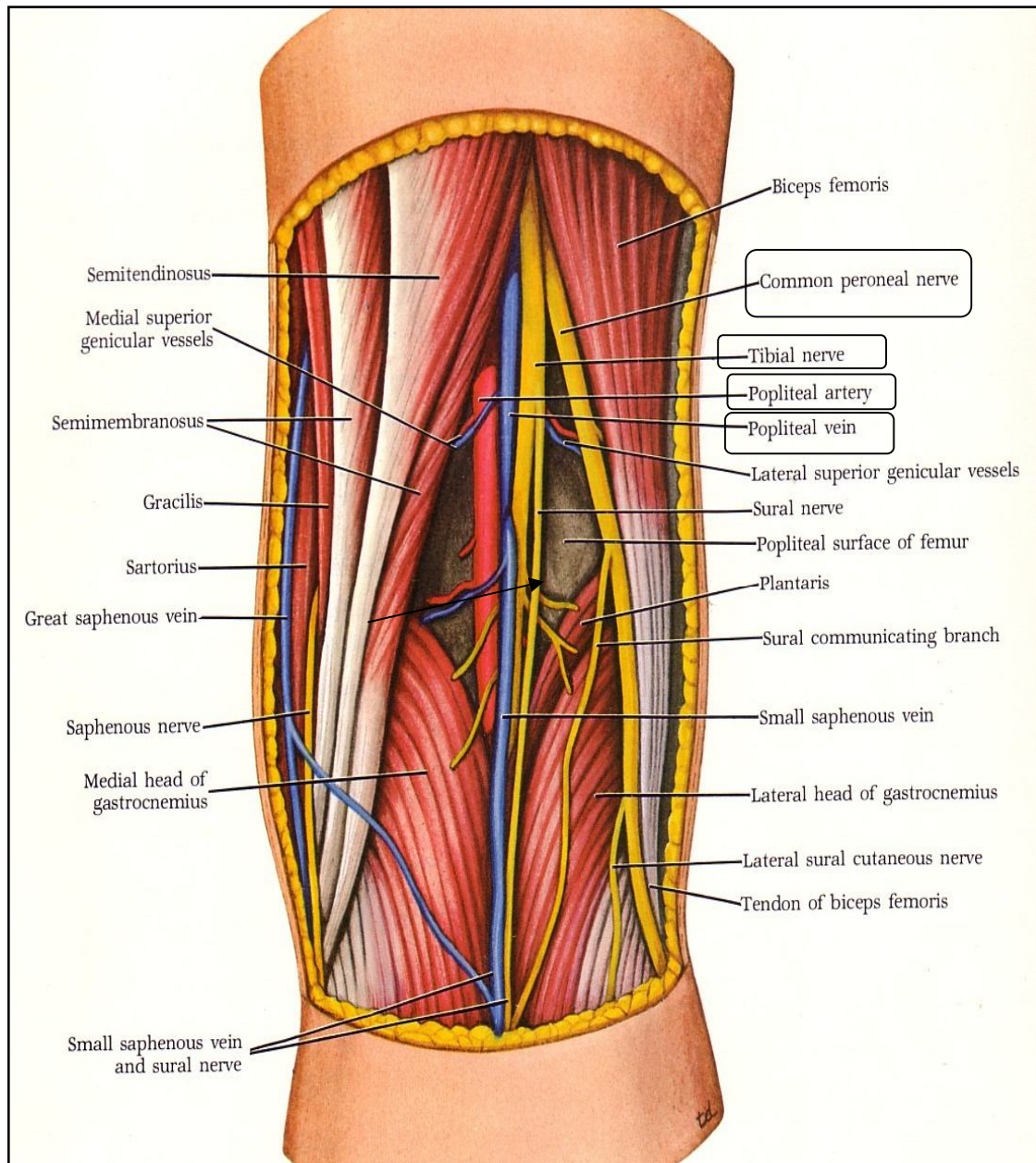
You should identify :

its boundaries



- superior and medial – semitendinosus & semimembranosus .
- superior and lateral - biceps femoris .
- inferior and medial - medial head of gastrocnemius .
- inferior and lateral - lateral head of gastrocnemius .

its contents



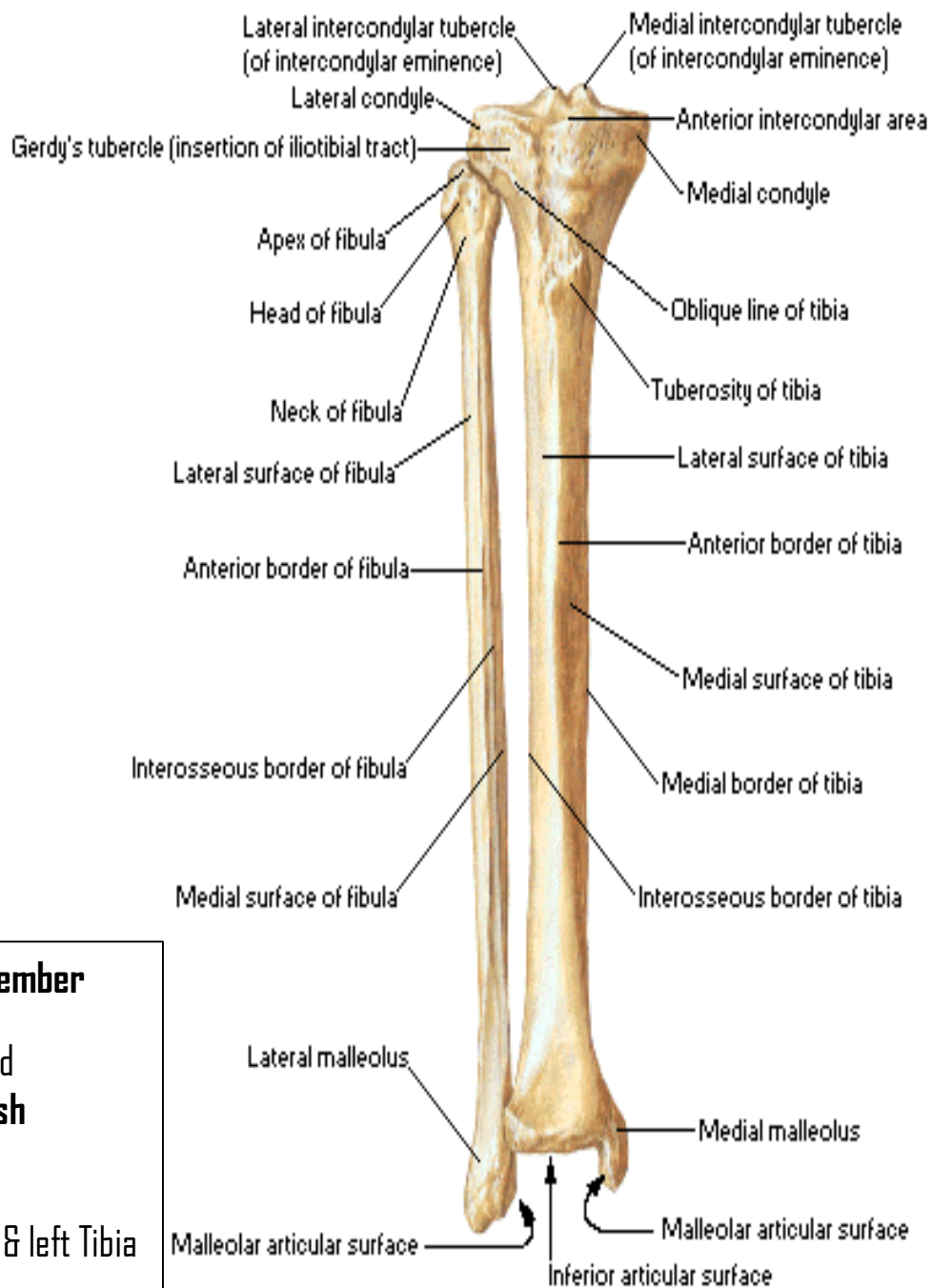
- popliteal artery .
- popliteal vein .
- tibial nerve .
- common peroneal nerve .

Practical 19

Tibia , Fibula , Foot Bones & Patella

Tibia and Fibula of Right Leg

Anterior View



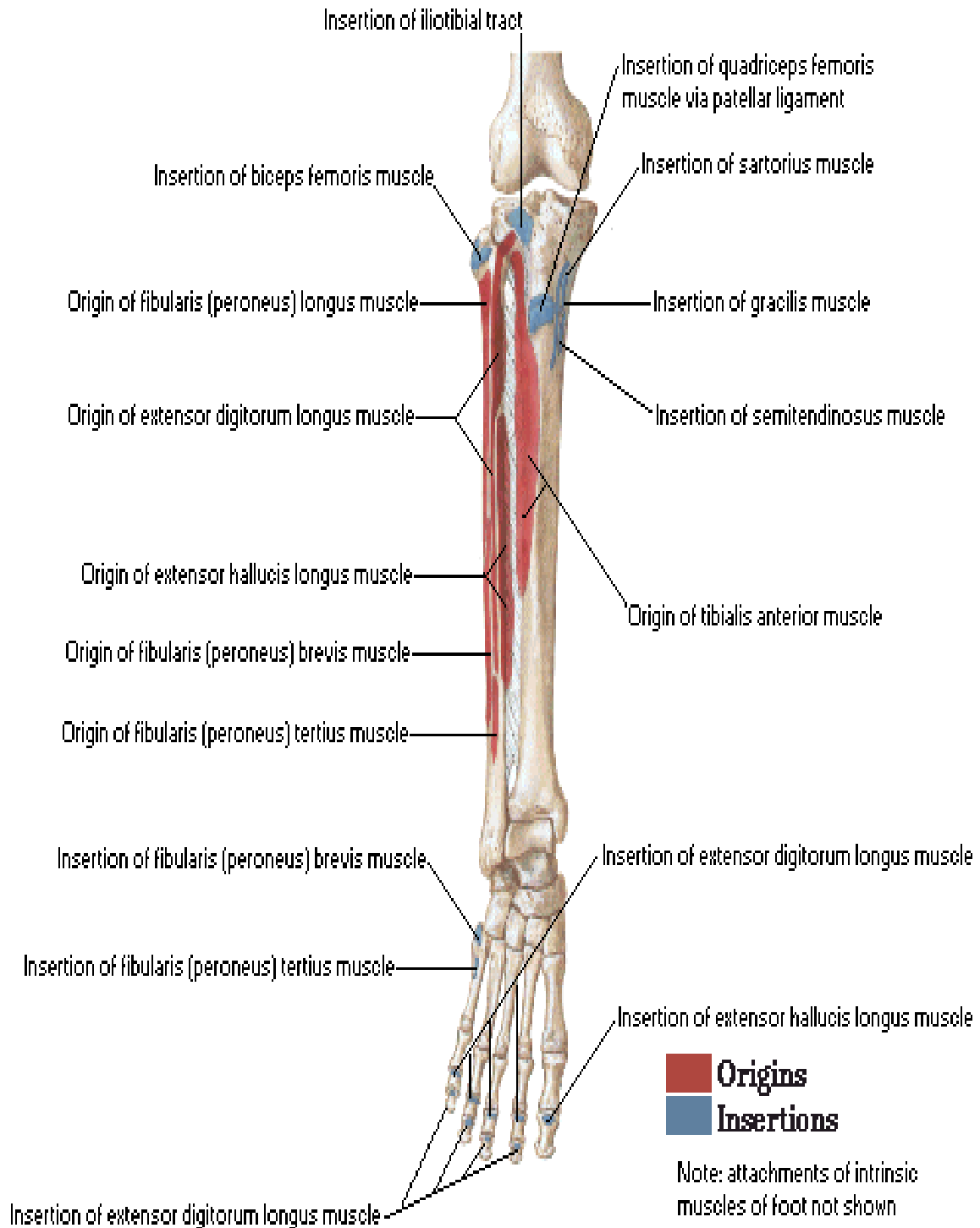
Remember

You should **distinguish** Between:

The right & left Tibia & Fibula .

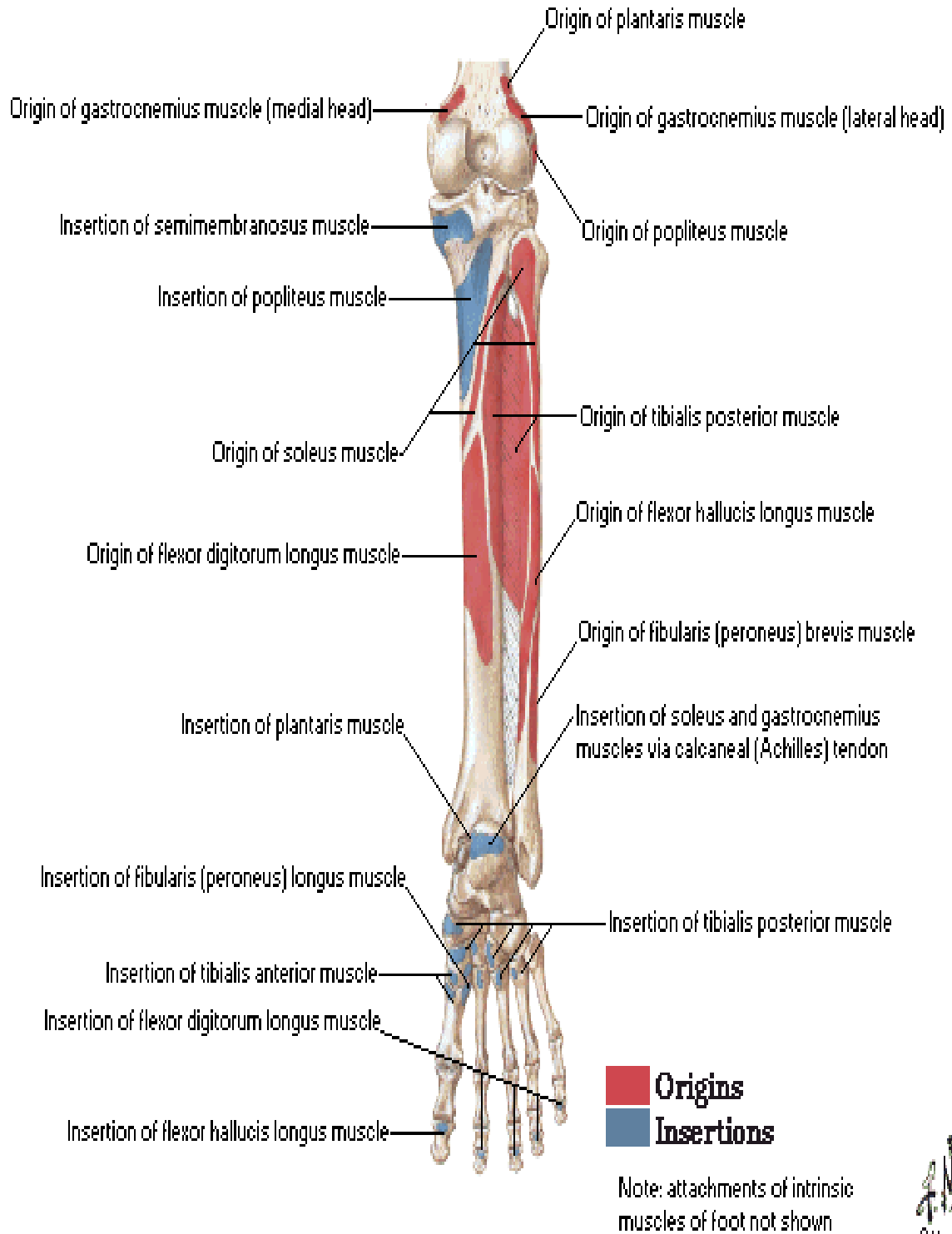
Bony Attachments of Muscles of Leg

Anterior View

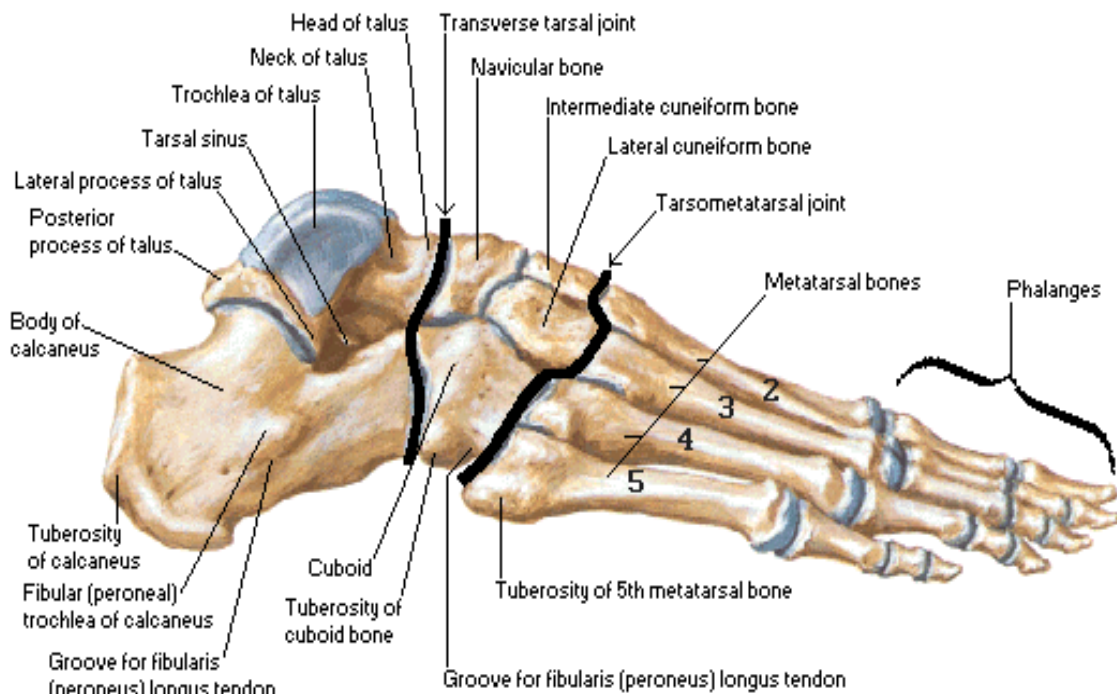


Bony Attachments of Muscles of Leg

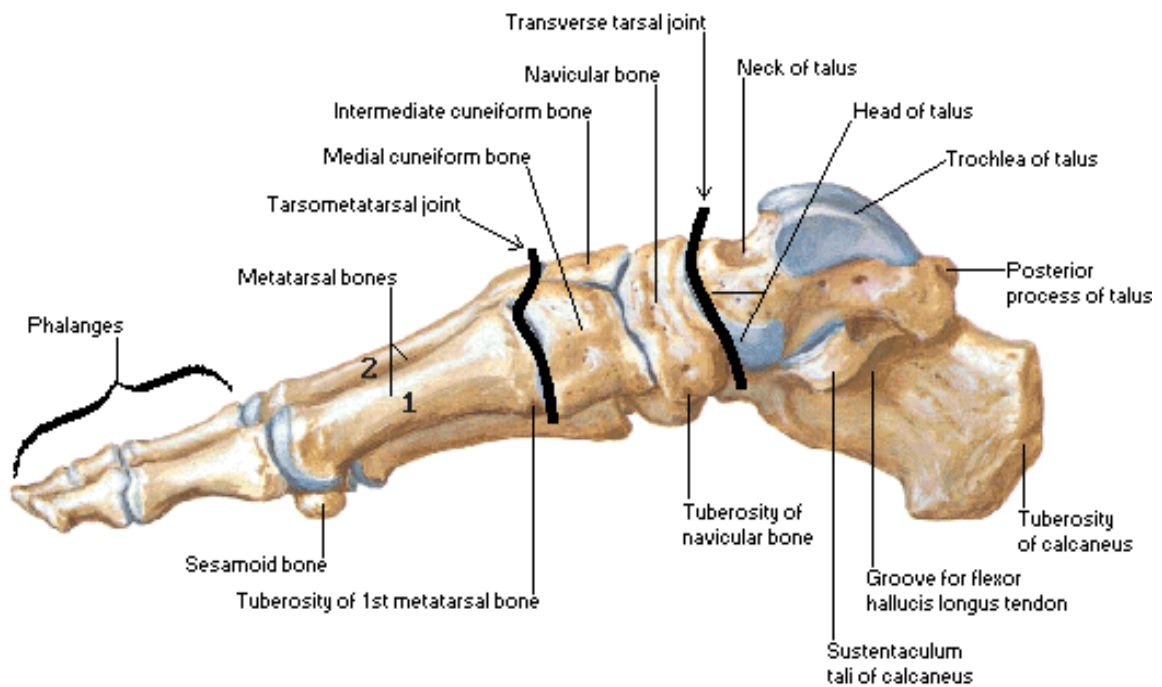
Posterior View

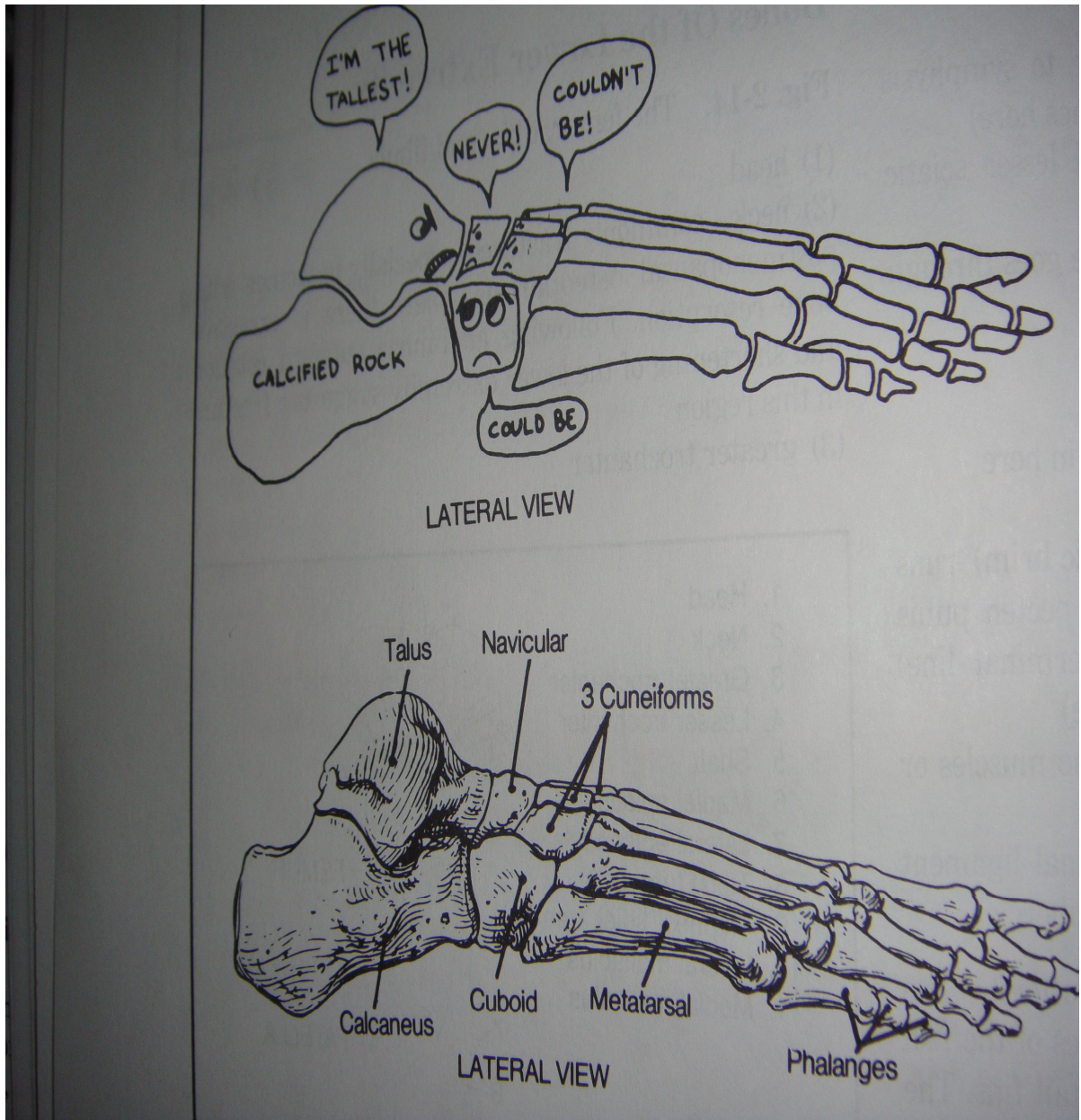


Bones of Foot Lateral View



Bones of Foot Medial View





Dr. optimistic ..

Patella

anterior aspect



posterior aspect



Remember

You should **distinguish**
Between:

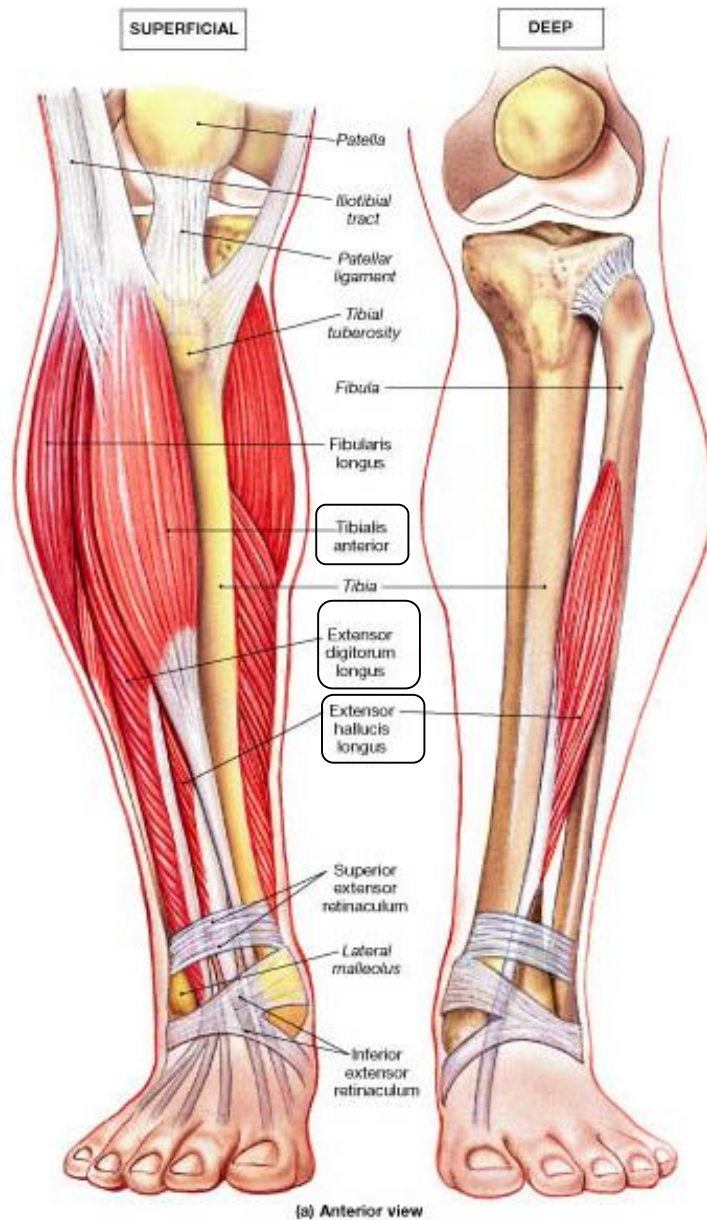
The right & left Patella

Practical 20

Anterior & Lateral compartment of Leg And Dorsum of Foot

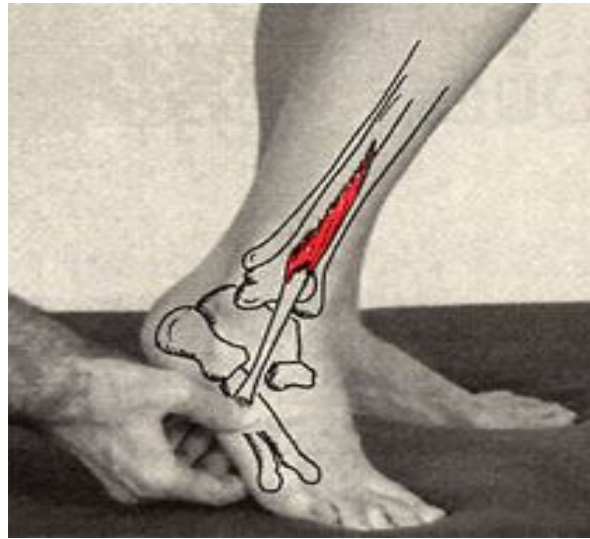
Anterior compartment of Leg

You should identify the :



- tibialis anterior .
- extensor digitorum longus .
- extensor hallucis longus .

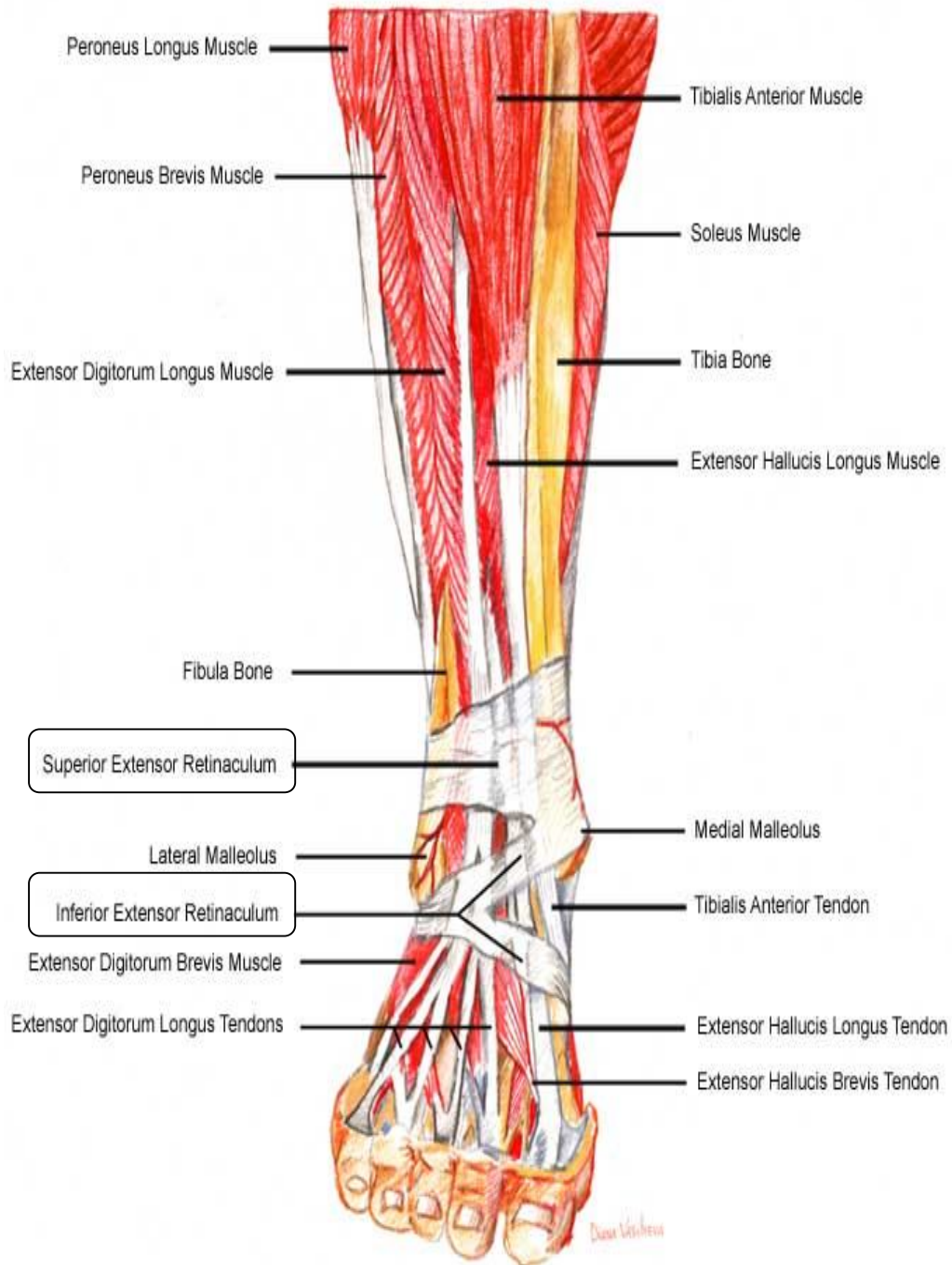
You should identify the :



~ Peroneus tertius M.

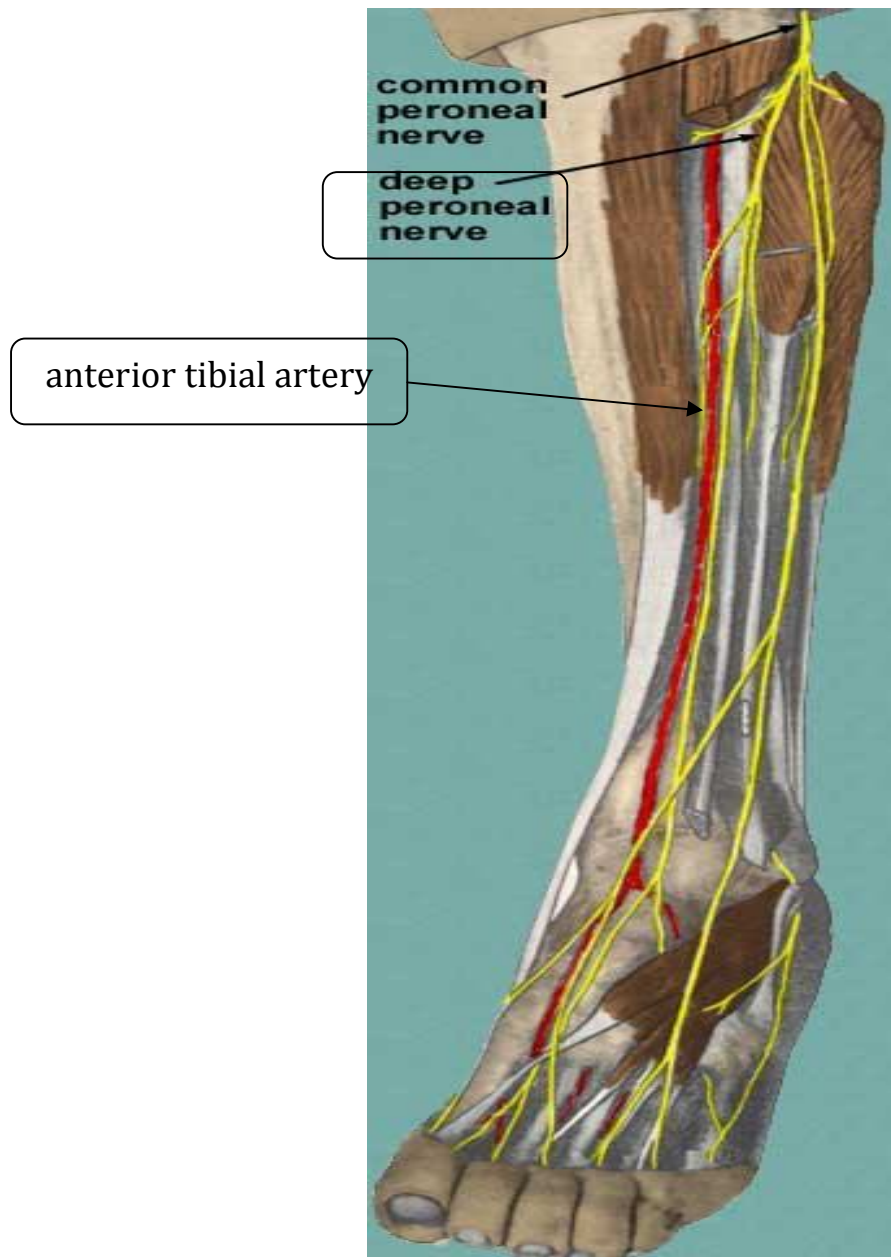
You should identify the :

Front View of Foot Muscles



- Superior extensor retinaculum.
- Inferior Extensor Retinaculum.

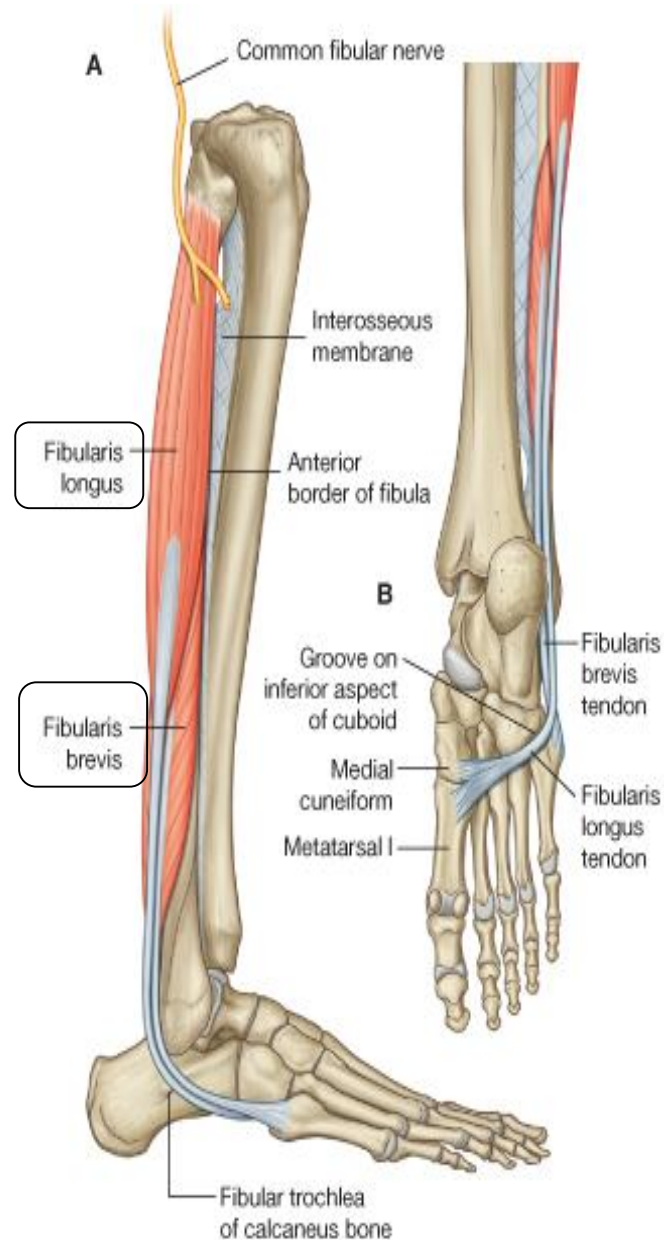
You should identify the :



- deep peroneal nerve .
- anterior tibial artery .

Lateral compartment of Leg

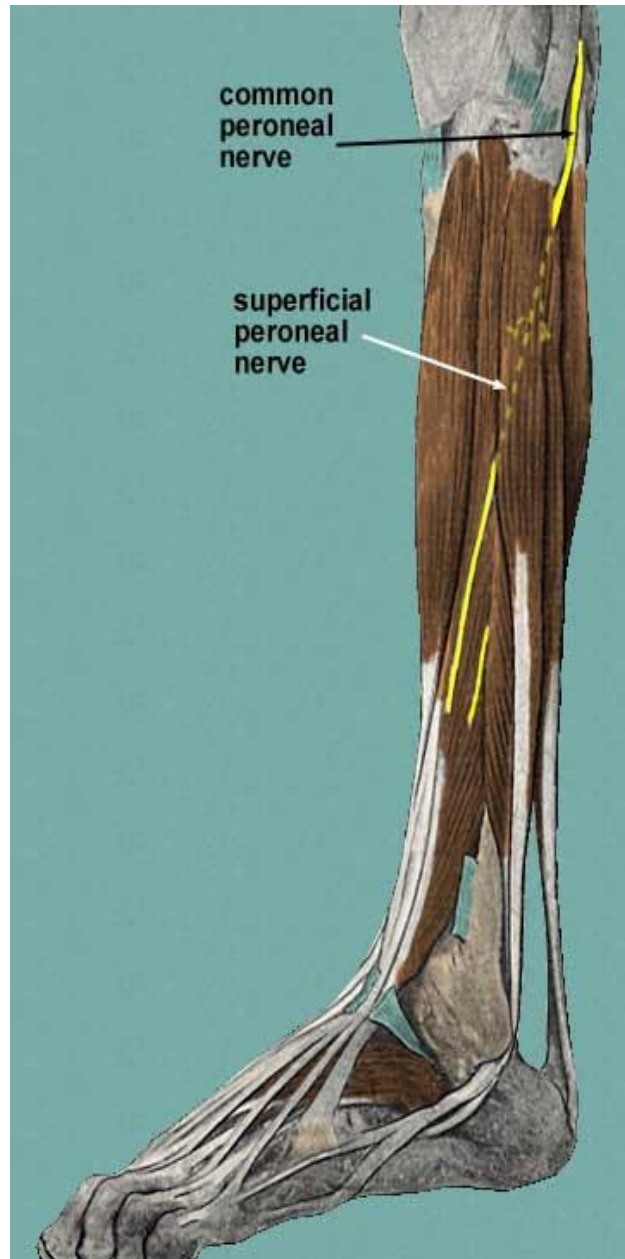
You should identify the :



© Elsevier. Drake et al: Gray's Anatomy for Students - www.studentconsult.com

- peroneus (fibularis) longus .
- peroneus (fibularis) brevis .

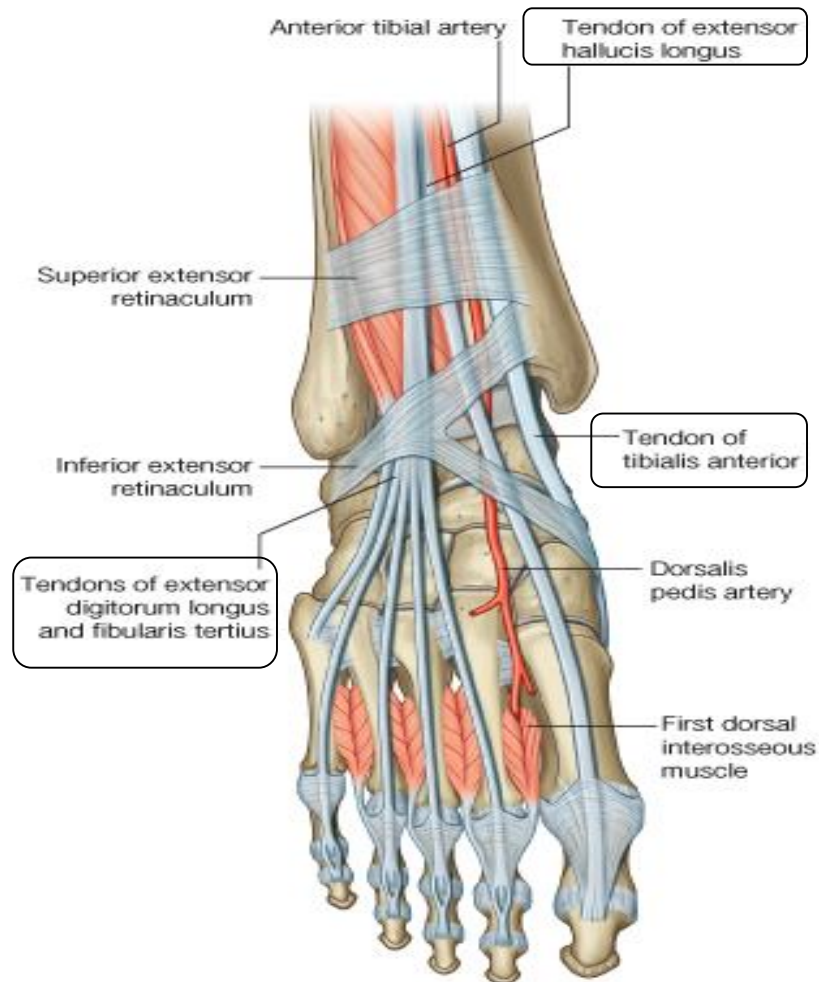
You should identify the :



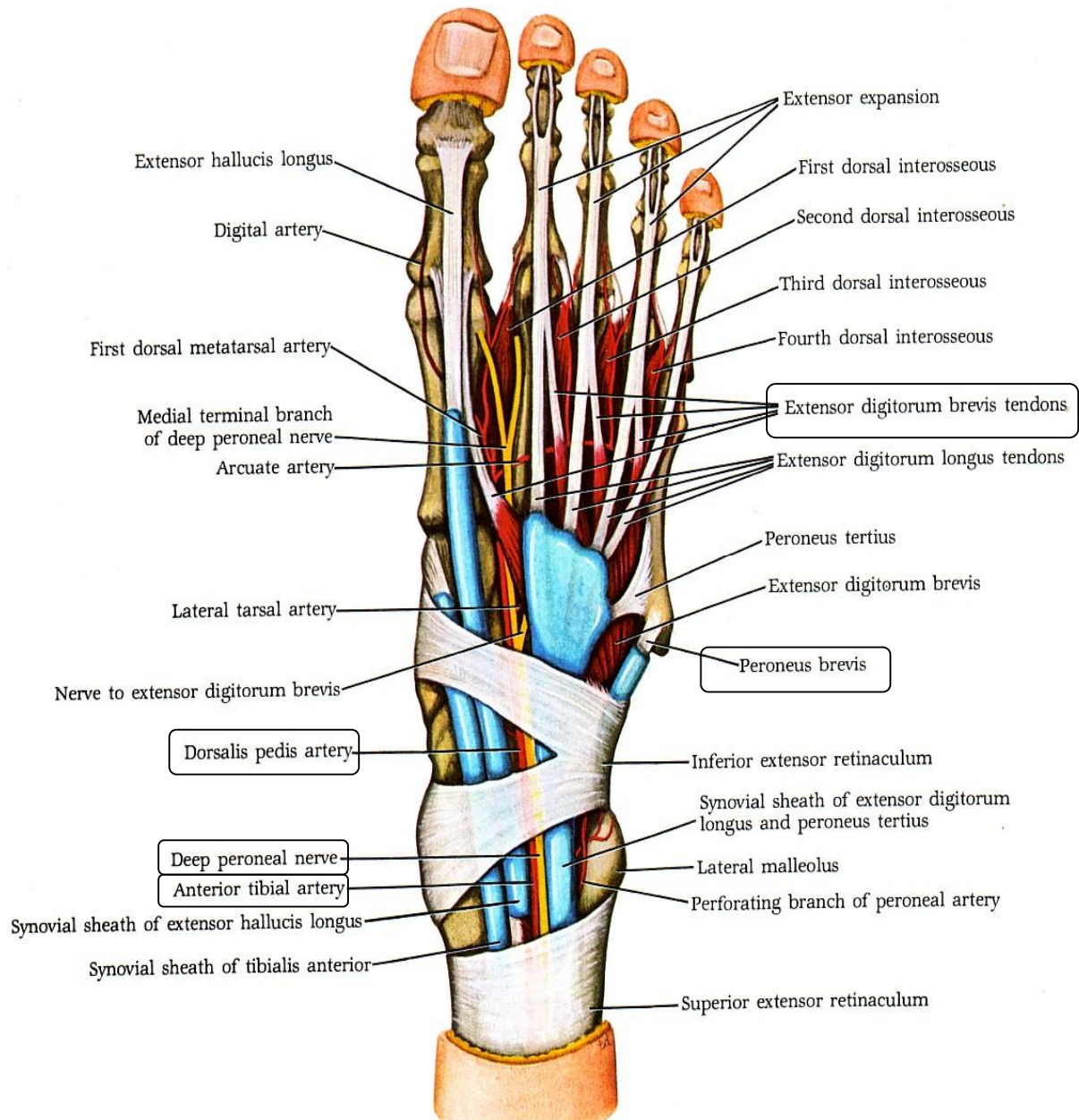
- superficial peroneal nerve .

Dorsum of Foot

You should identify the :

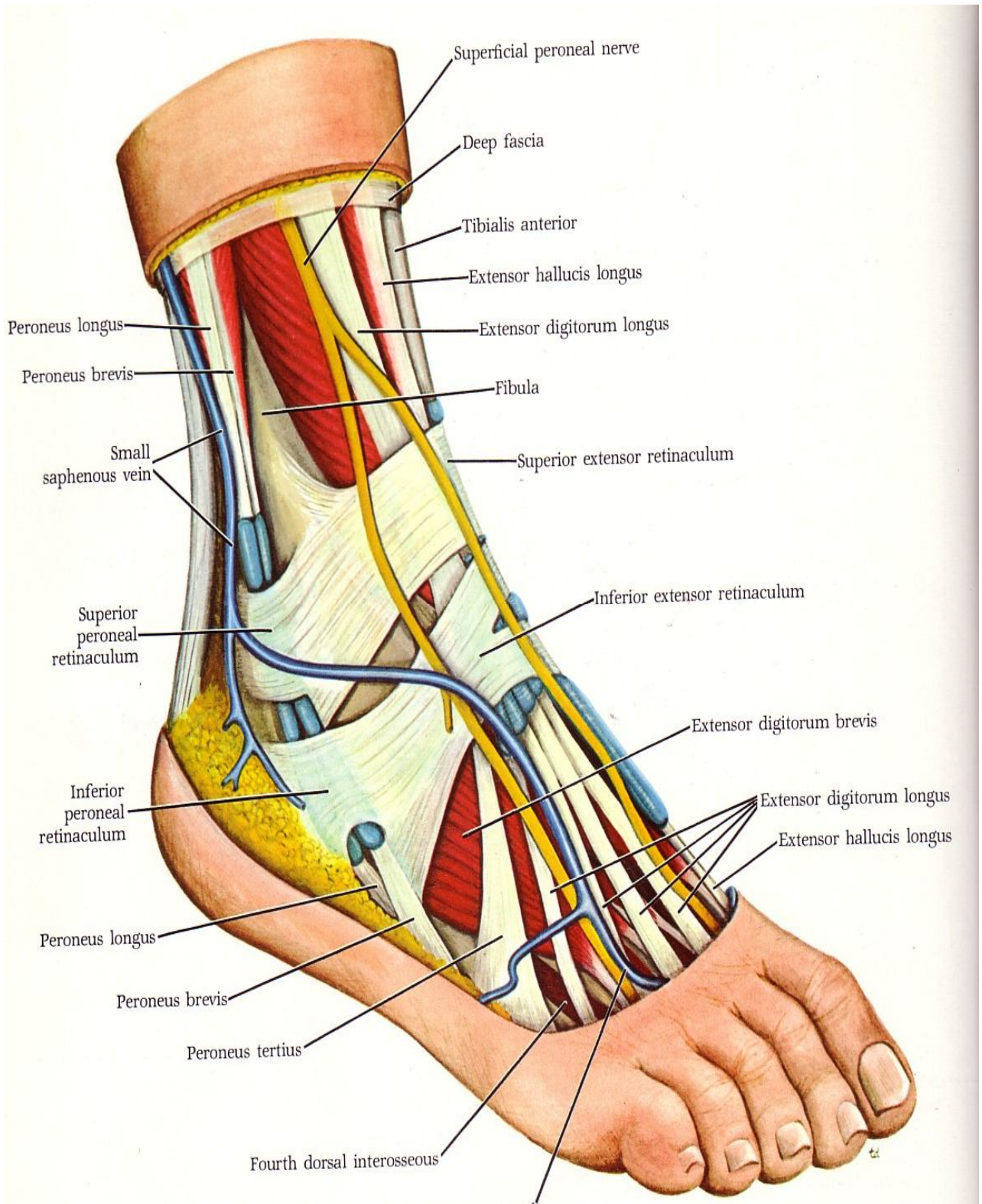


- Tendons of Extensor digitorum longus & Tendon of Peroneus tertius.
- Tendon Extensor hallucis longus.
- Tendon of tibialis anterior .



- Tendons of Extensor digitorum brevis (below longus) .
- Tendon of Peroneus longus .
- Tendon of Peroneus brevis.
- anterior tibial artery .
- dorsalis pedis artery .
- deep peroneal nerve .

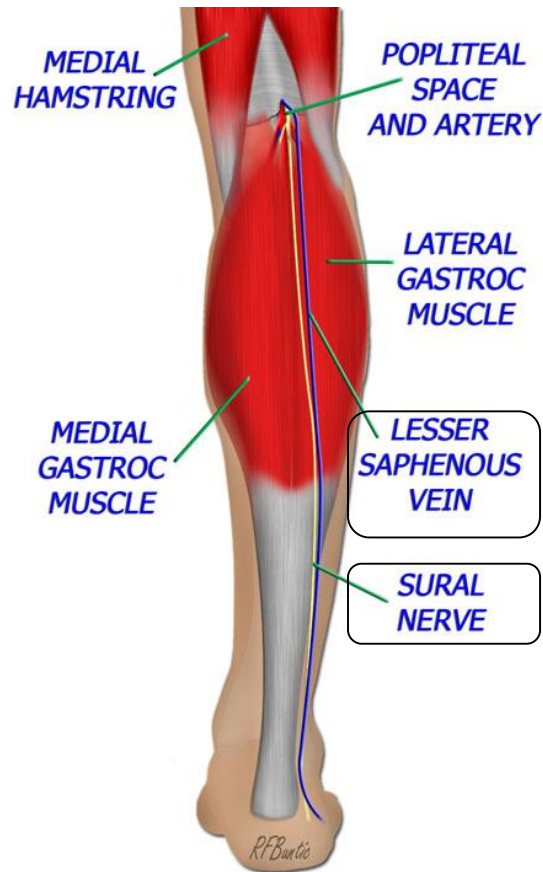
General View



Practical 21

Posterior compartment of Leg

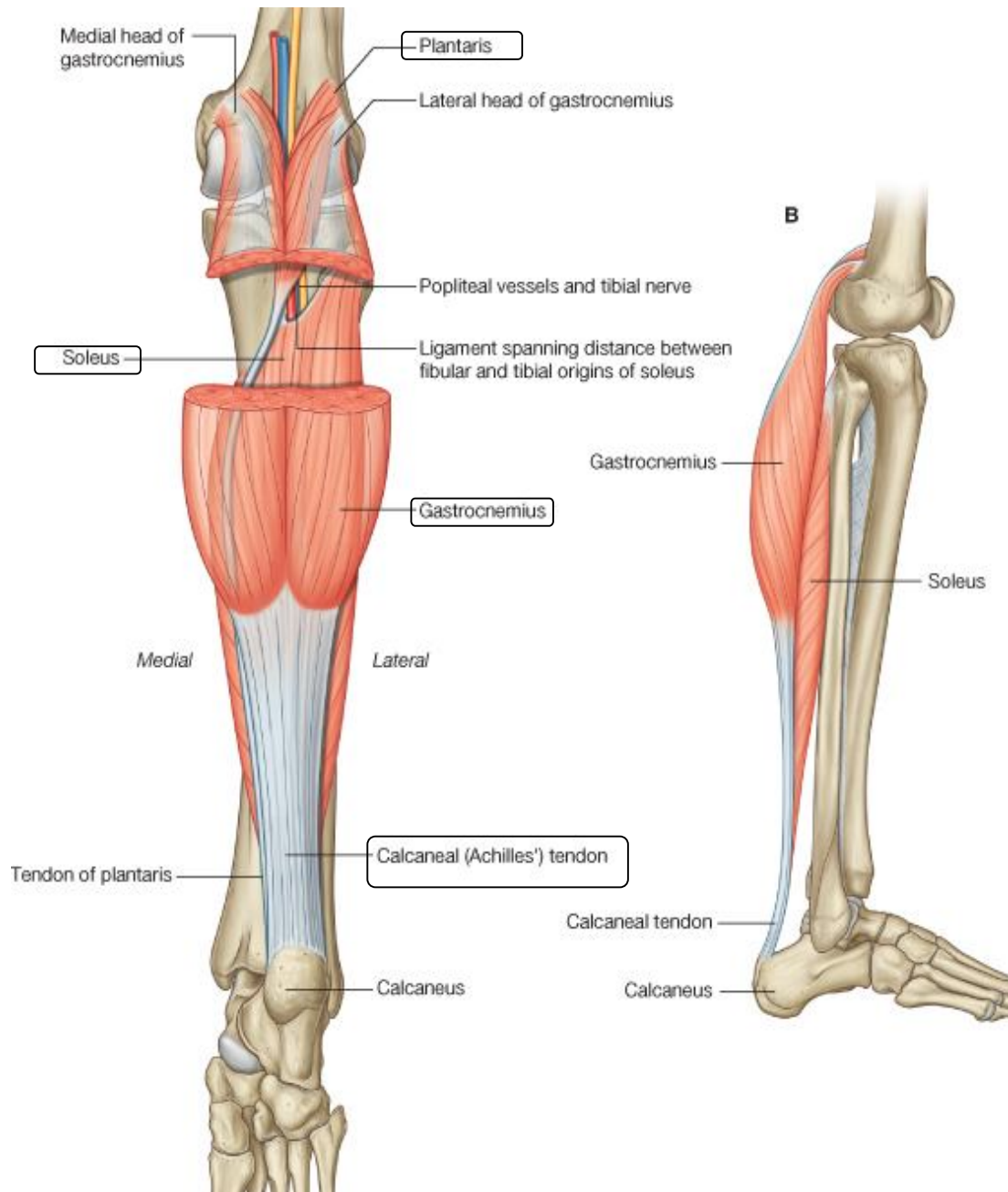
Superficially You should identify the :



-small saphenous vein .

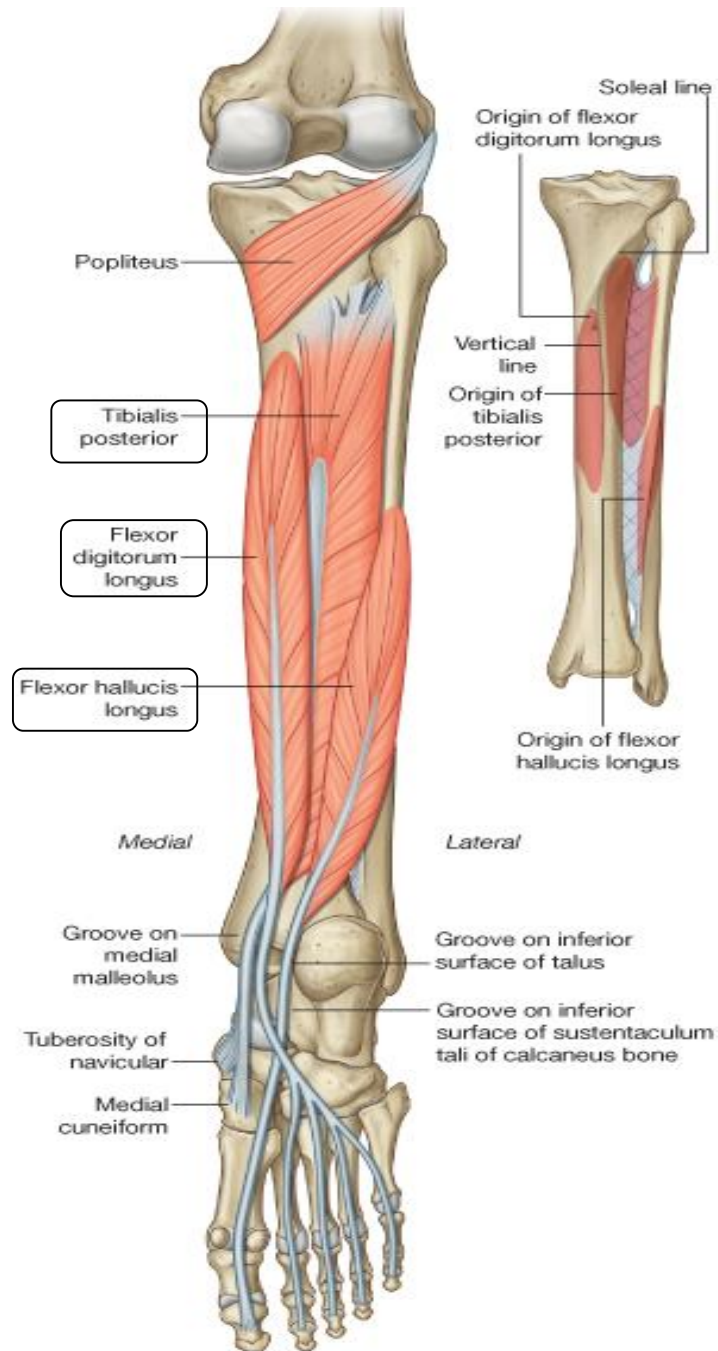
- sural nerve .

You should identify the superficial muscles which includes:



- gastrocnemius .
- plantaris (may be absent) .
- soleus .
- calcneal tendon .

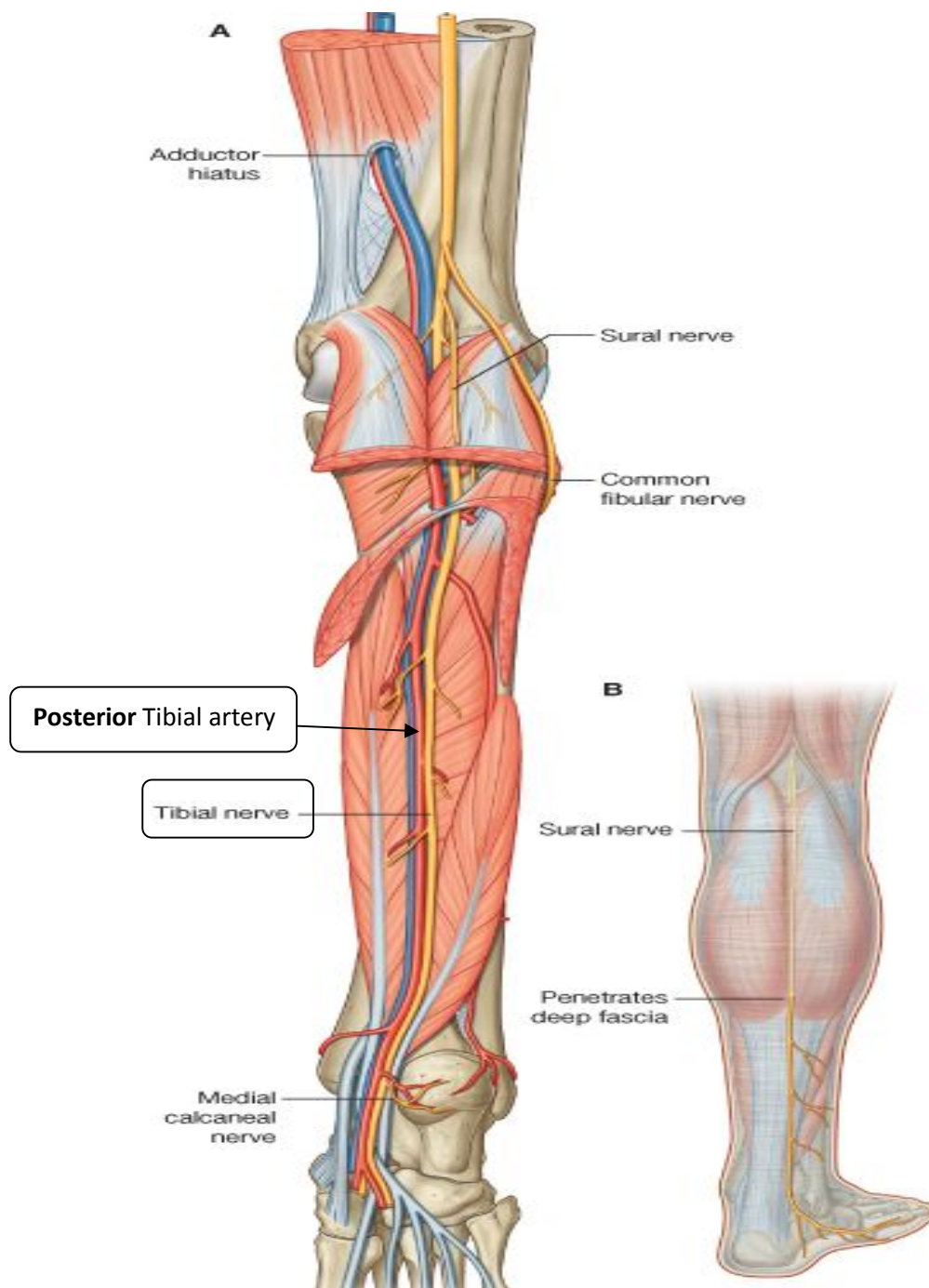
You should identify the deep muscles which includes:



© Elsevier. Drake et al: Gray's Anatomy for Students - www.studentconsult.com

- tibialis posterior .
- flexor digitorum longus .
- flexor hallucis longus.

You should identify the:



- Posterior tibial artery .
- tibial nerve .



Tome: Tibialis posterior .

Does: Flexor digitorum longus .

A: Posterior tibial artery .

V: Posterior tibial vein .

N: Posterior tibial nerve .

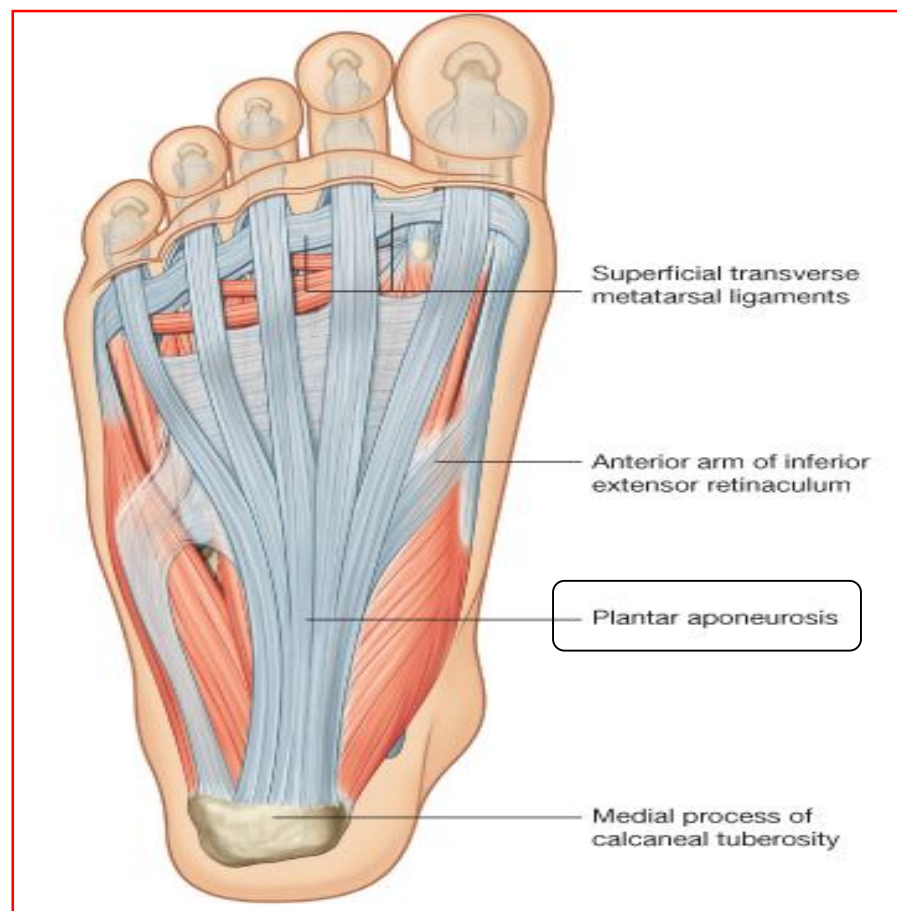
Hat: Flexor hallucis longus .

Practical 22

Sole of the Foot & Knee joint

Sole of the Foot

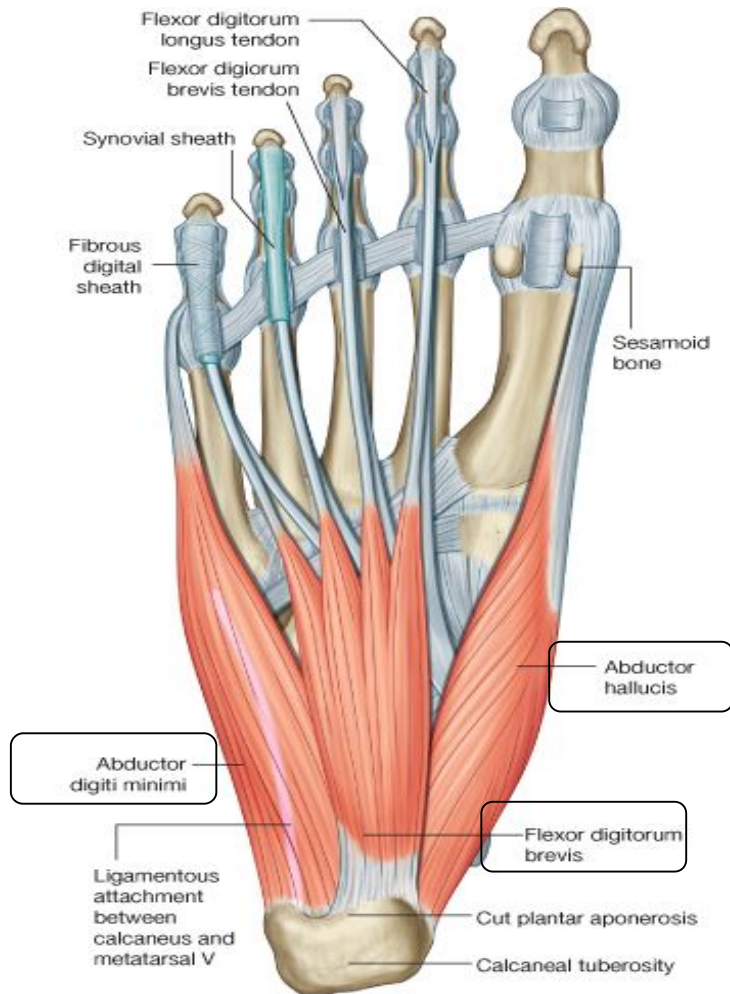
You should identify the:



- planter aponeurosis .

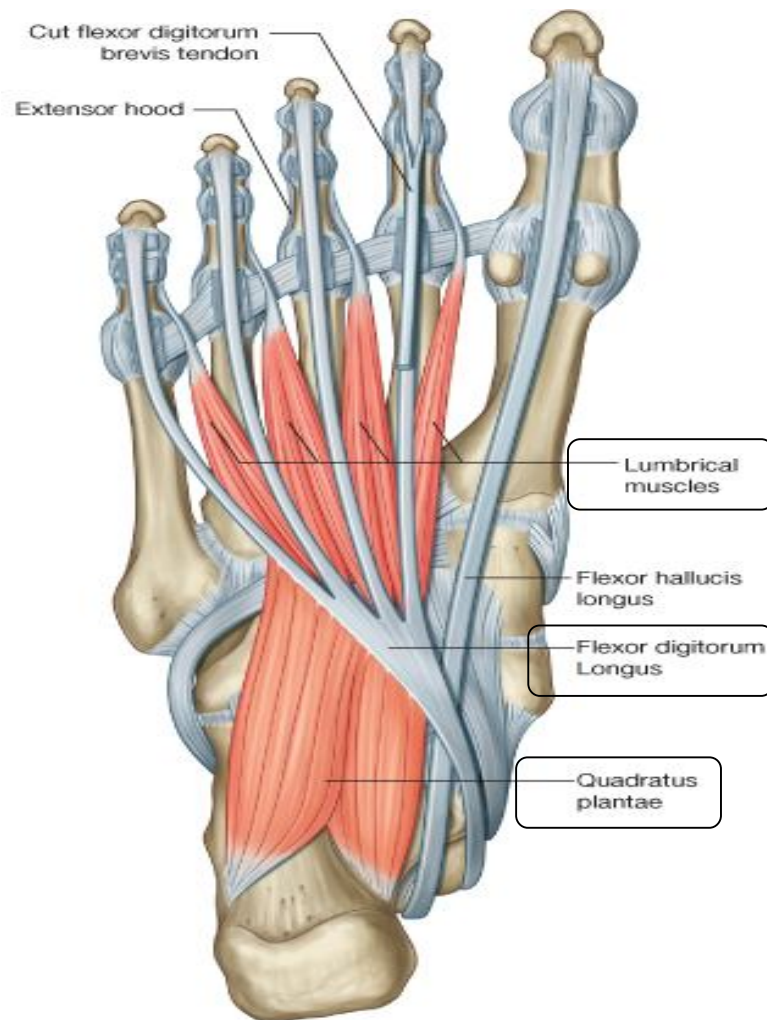
After the plantar aponeurosis has been removed you can see the muscles that make up the first layer of the sole of the foot and the arteries and nerves entering the foot .

The muscles of the first layer are:



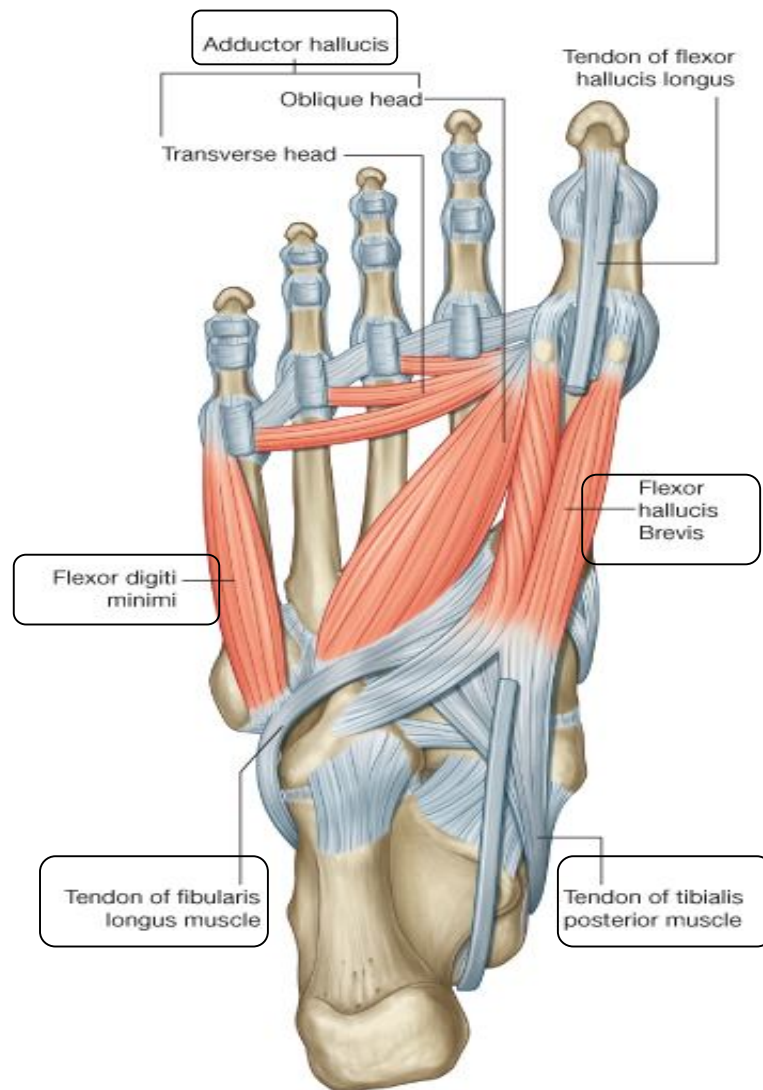
- abductor hallucis .
- flexor digitorum brevis .
- abductor digiti minimi .

The muscles of the second layer are:



- accessory flexor (quadratus plantae) .
- lumbricals .
- tendons of the flexor digitorum longus(below brevis) from which the lumbricals arise .

The muscles of the third layer are:

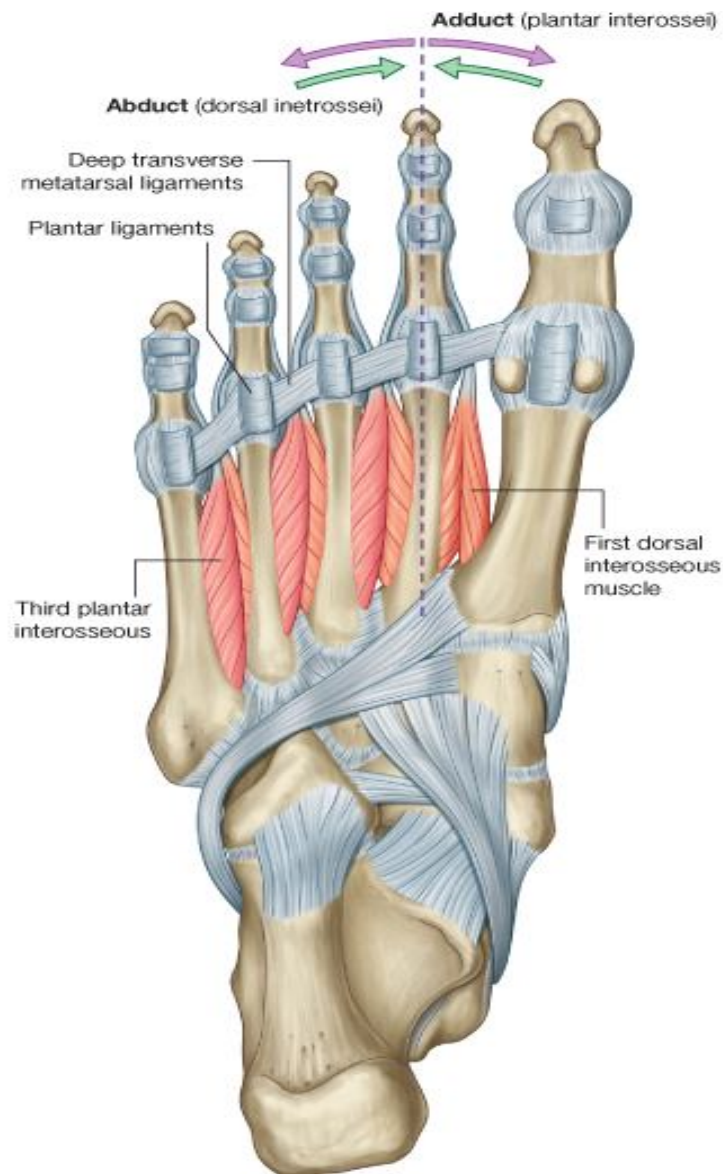


- flexor hallucis brevis .
- adductor hallucis .
- * oblique head .
- * transverse head .
- flexor digiti minimi brevis .

You can see also :

- tendons of Tibialis Posterior & Peroneus Longus .

The muscles of the fourth layer are:

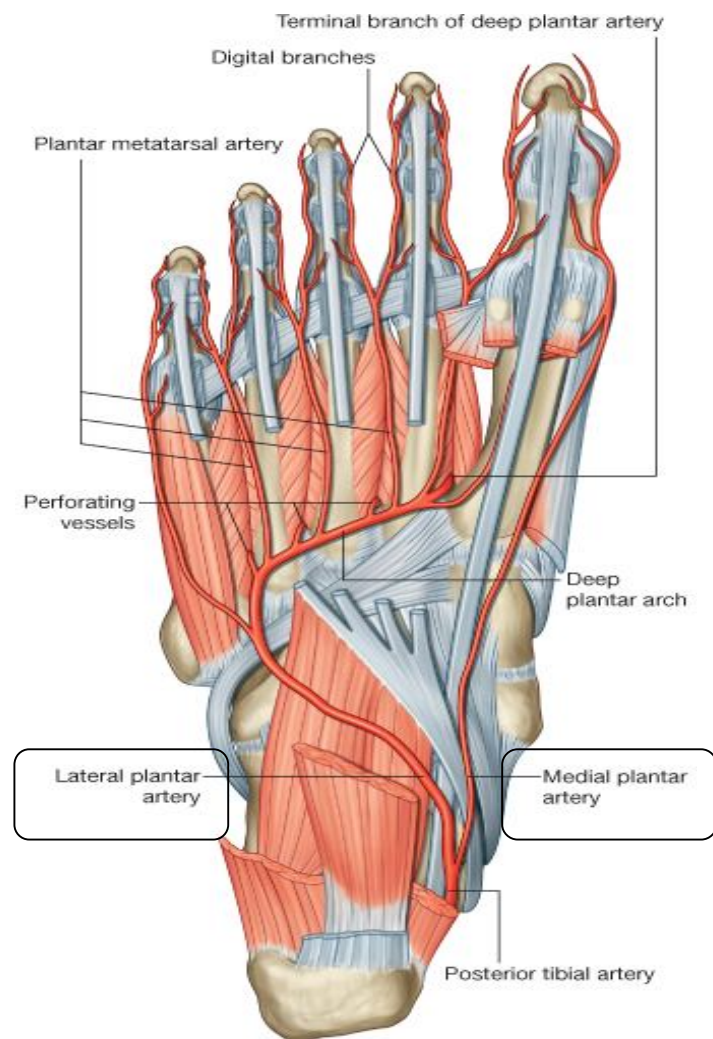


- dorsal interossei .
- plantar interossei .

Hint

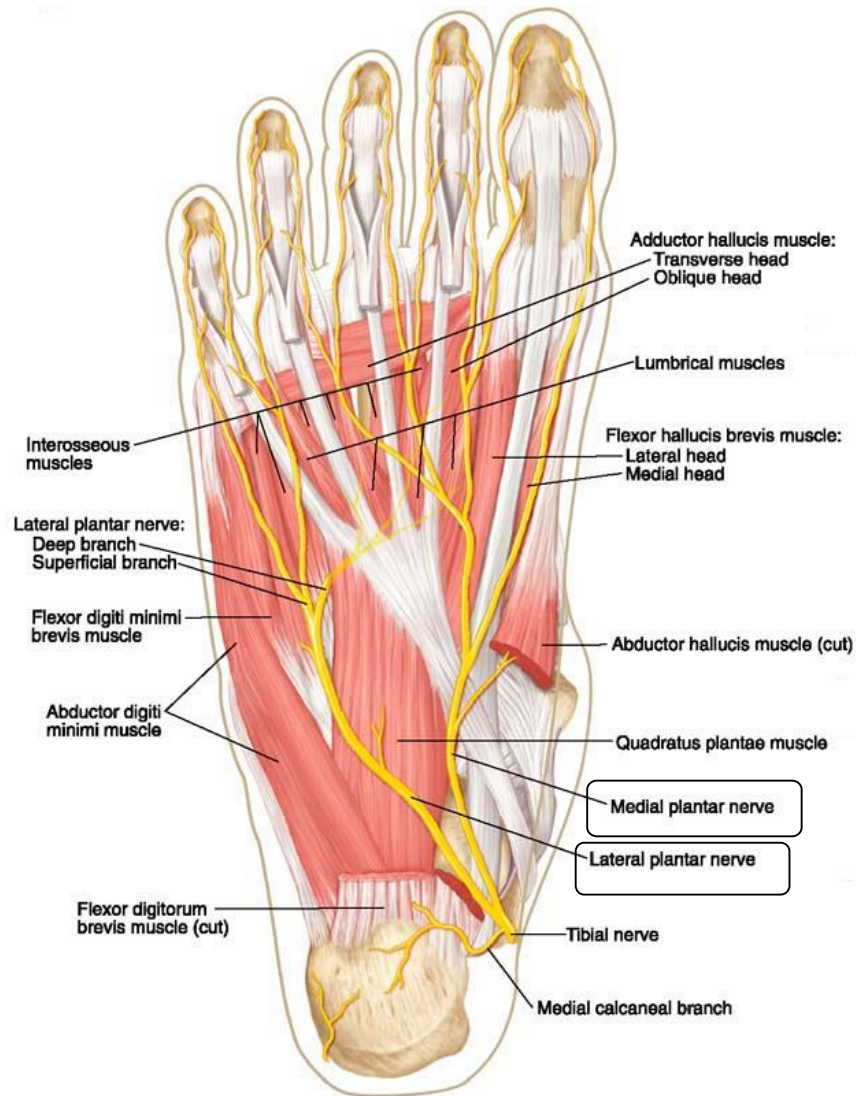
Usually you will be asked about the muscles of the 1st & 2nd layers .

You should identify the:



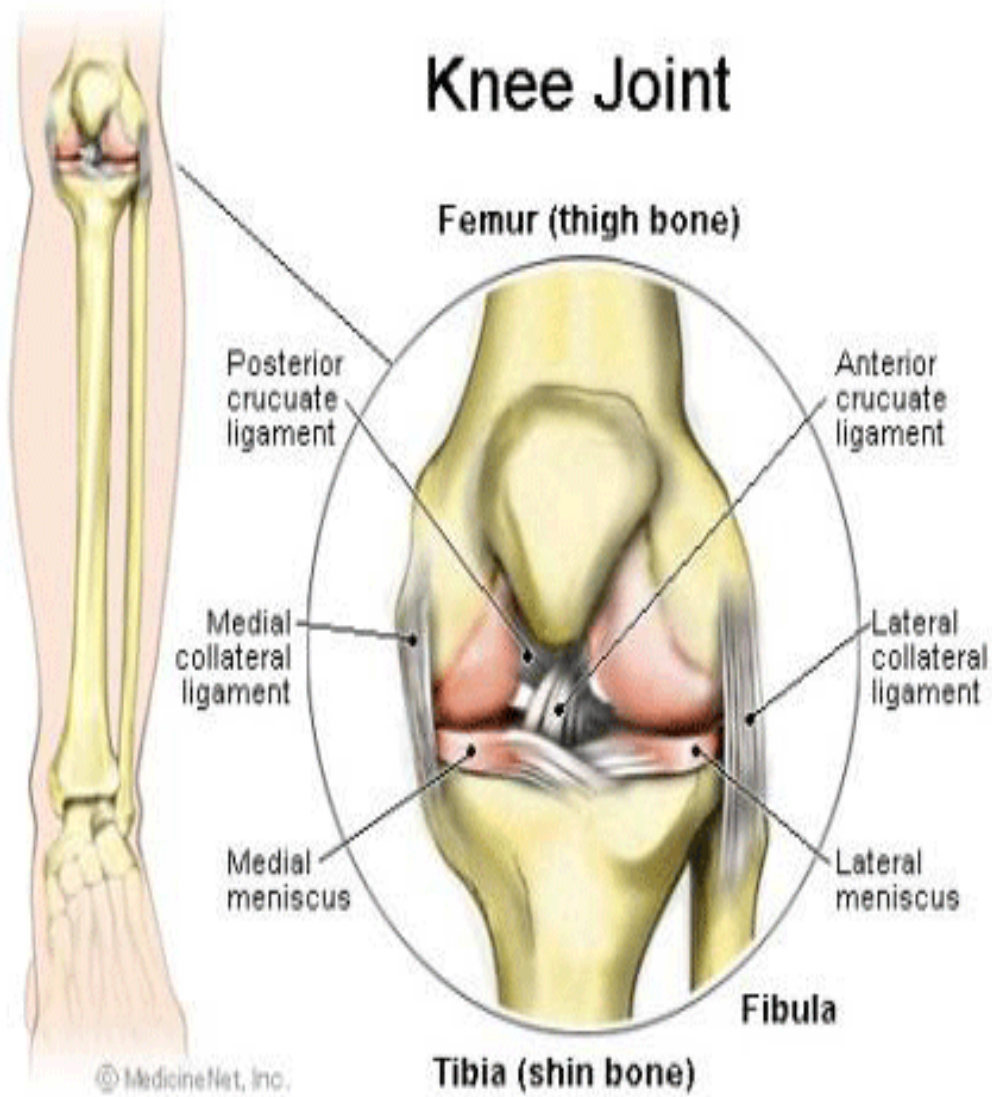
- Medial & Lateral Plantar Arteries .

You should identify the:



- Medial & Lateral Plantar Nerves .

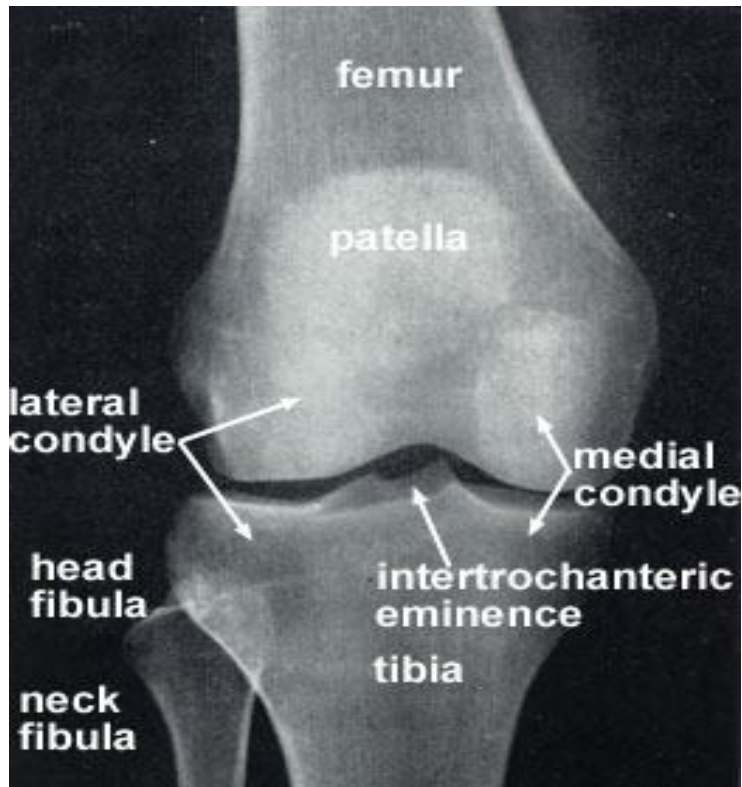
Knee Joint

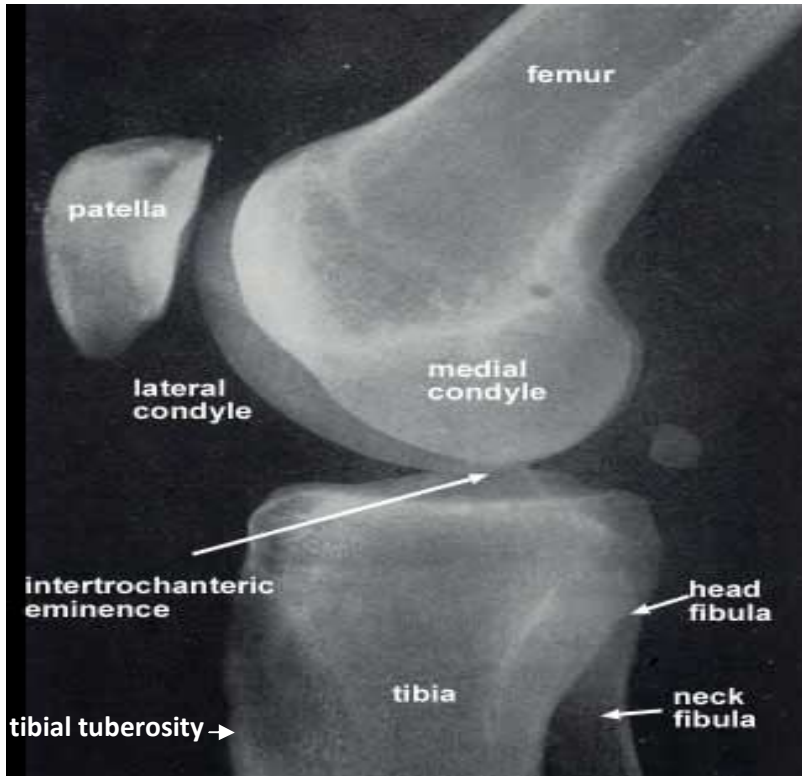


Nothing will Be asked here ^_^

Practical 23

X-Ray of the Lower Limb



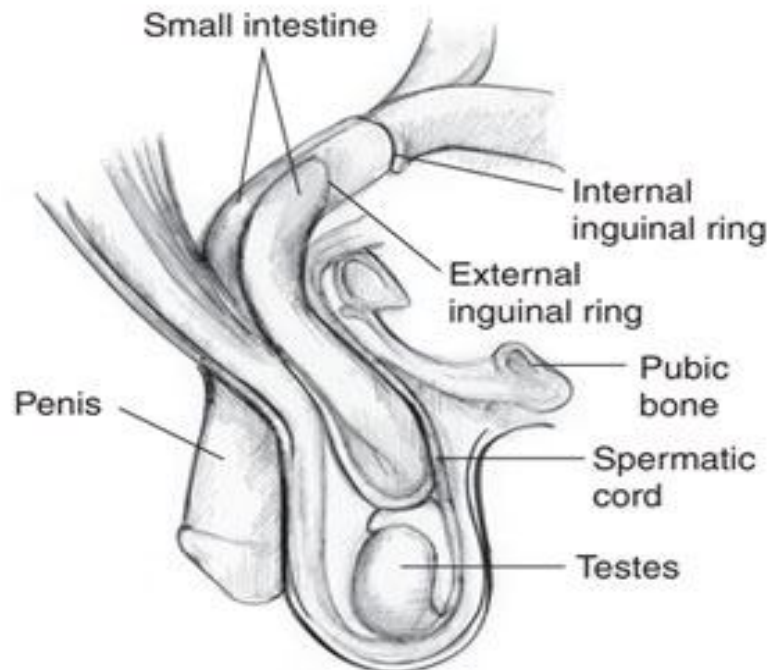
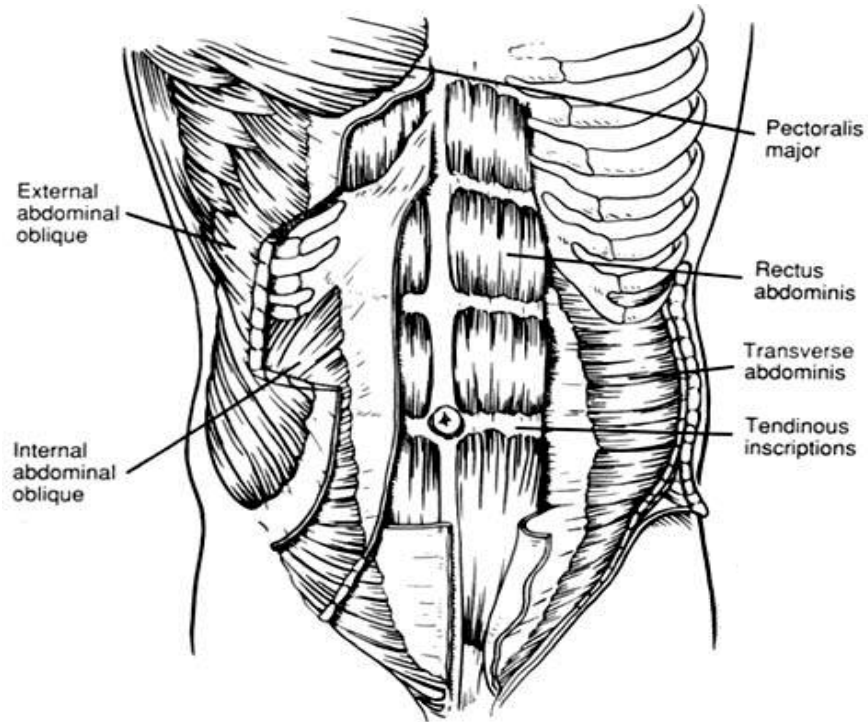


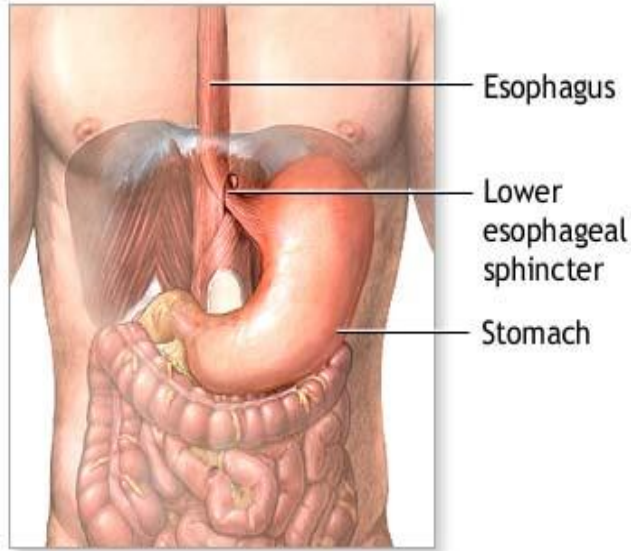


Side view

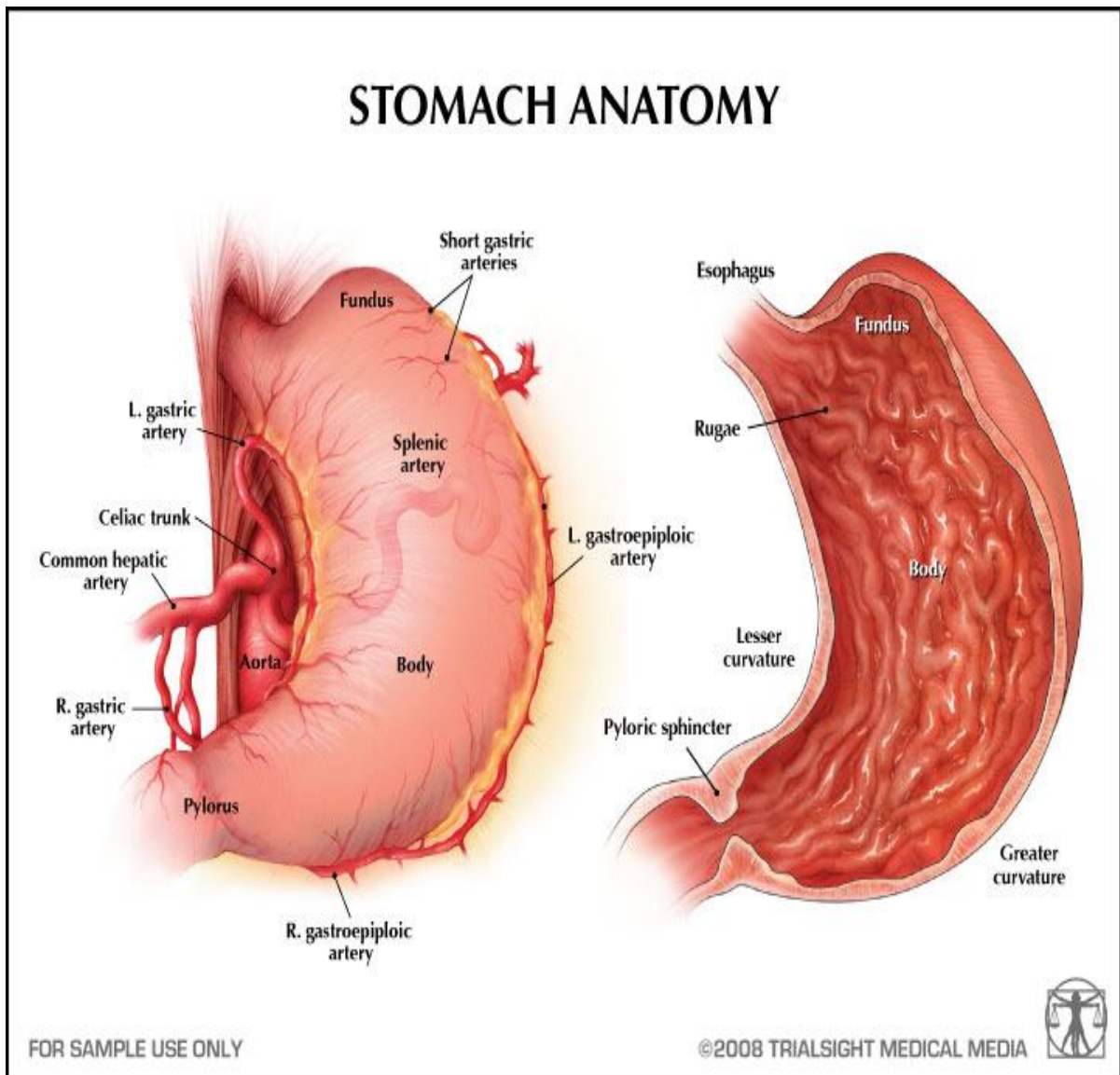


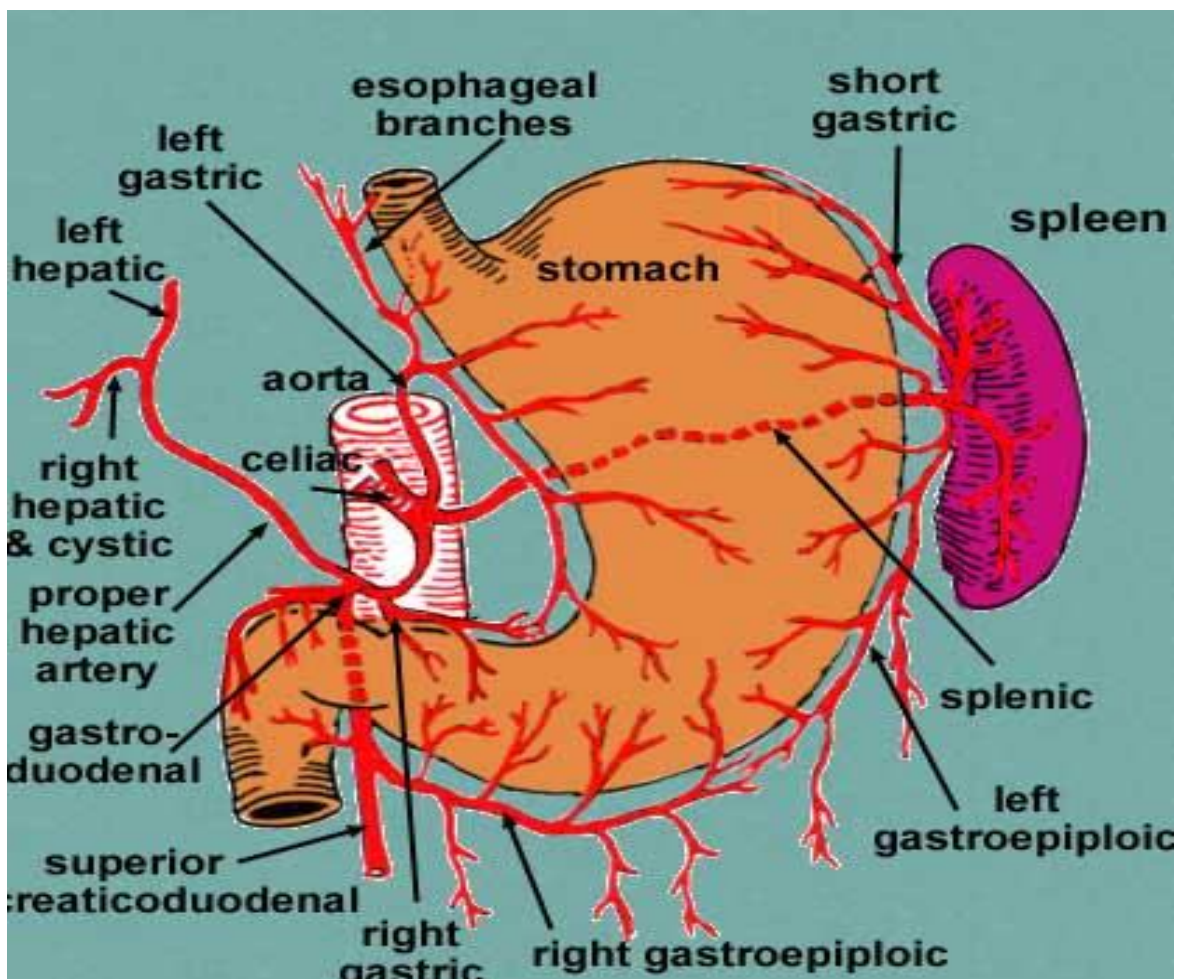
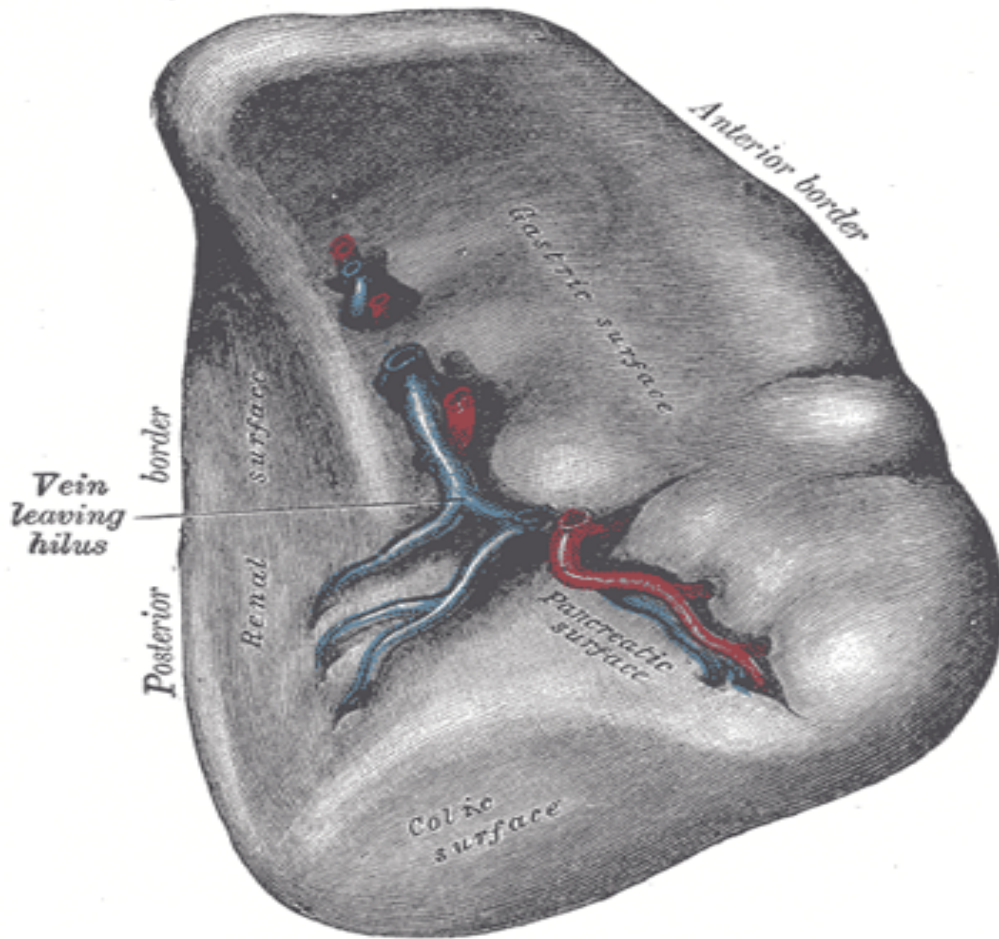
Things from the 1st semester

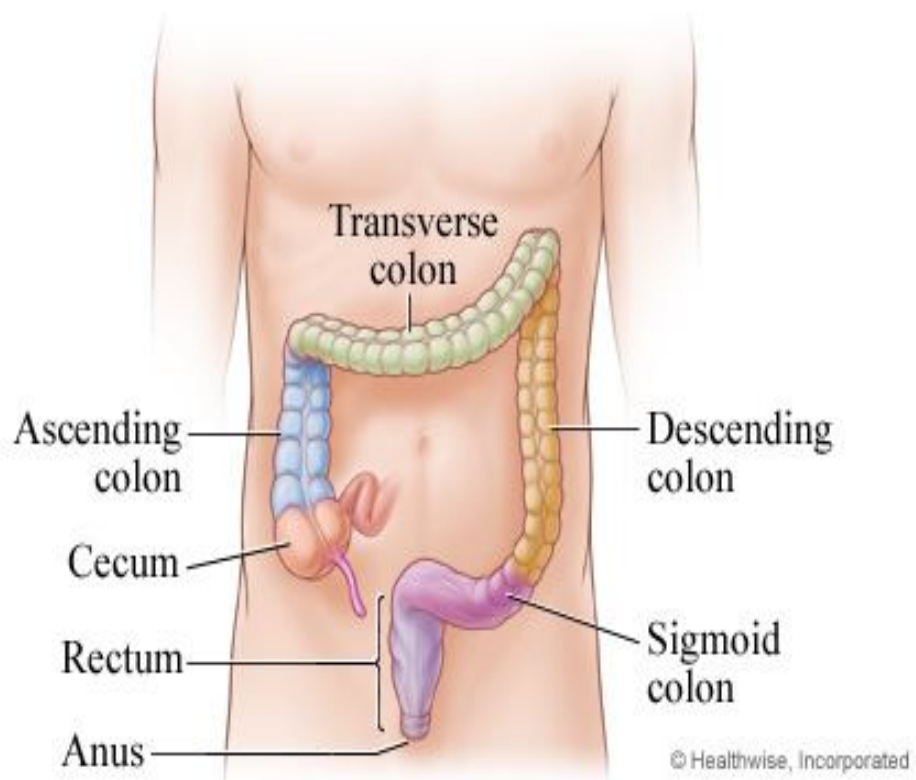
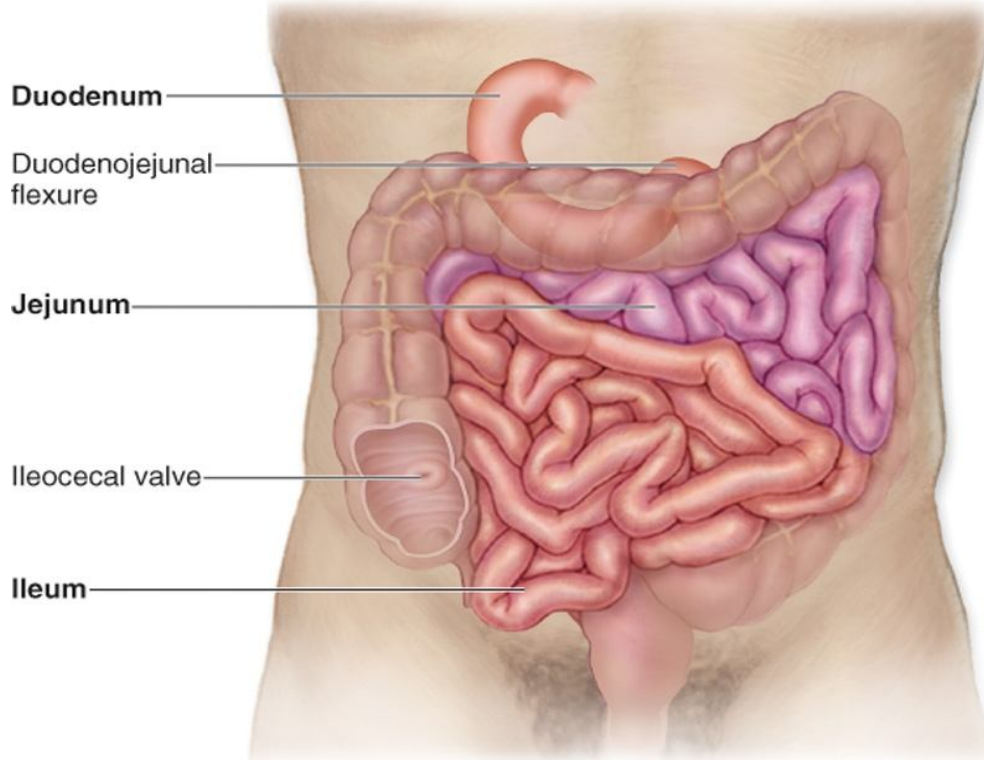


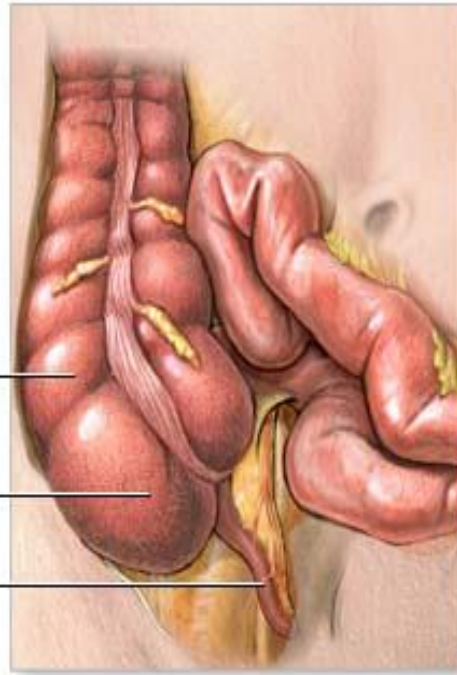


ADAM.









Large intestine

Cecum

Appendix

ADAM.