



# INFLAMMATION & REPAIR

هذه المذكرة عبارة عن هاند أوت الدكتور السحيباني بعد تنسيقها. شاملة لكل ما هو مطلوب في هذه الجزئية.

تيم باث ٤٢٩

رائد فرج  
رفيف مطر  
رهام الحناكي

الشكر موصول لـ  
أحمد العقيل

## INFLAMMATION AND REPAIR

### **Definition:**

Inflammation, the local response of tissue to injury, is fundamentally a vascular phenomenon. It is beneficial host response to foreign invaders and necrotic tissue. The suffix "itis" is added to the base word to state the condition as in appendix/appendicitis and spleen/splenitis. Inflammation can be harmful and cause tissue damage. The 4 ancient cardinal [main] signs of inflammation are:

- swelling - Tumor
- redness - Rubor
- warmth [heat] - Calor
- pain - Dolor
- loss of function - Functio Laesa

### **Causes of Inflammation:**

causes of tissue injury are those physical and chemical agents; they range from simple mechanical tissue disruption to the effects of irradiation. The inflammation can be caused by bacteria, viruses, parasites, fungi, thermal injuries, immunological injuries, foreign bodies and toxic substances.

### **Steps of inflammatory response can be reversed as (5 R's):**

- 1) Recognition of injuries agent.
- 2) Recruitment of leukocytes.
- 3) Removal of agent.
- 4) Regulation (control) of response.
- 5) Resolution (repair).

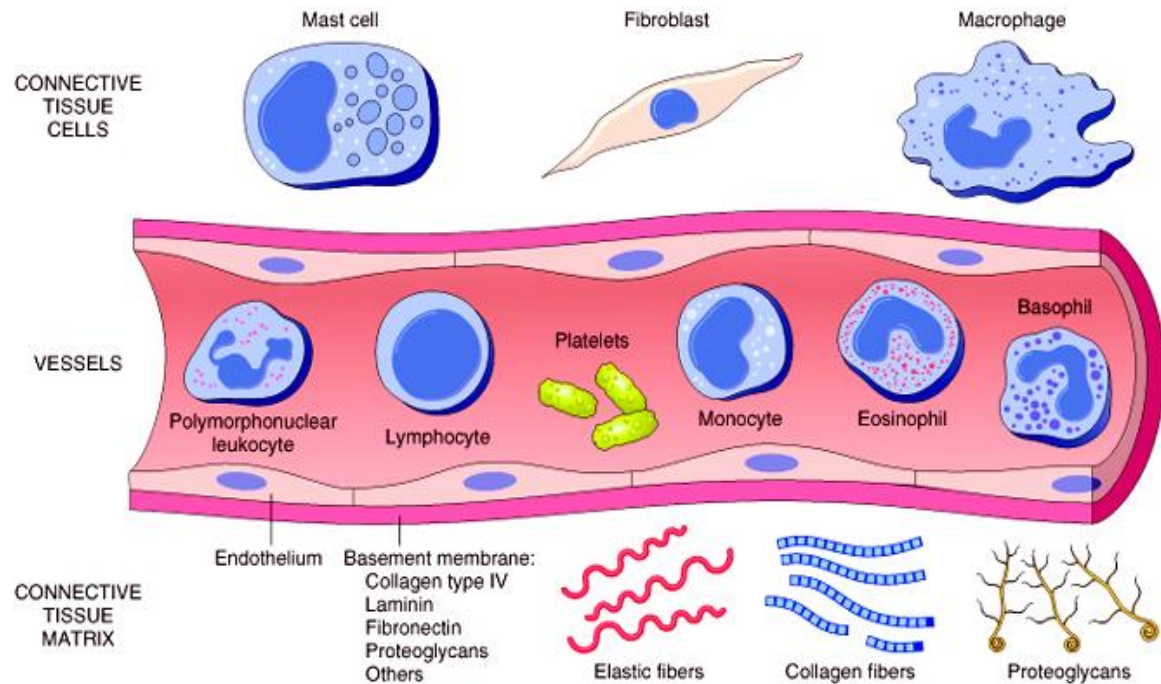
## Cells of the inflammatory process

Cell	Activity	Phagocytosis	Inflammation
<b>Neutrophil</b>	Proteases, oxidases	+	Acute
<b>Eosinophil</b>	Antihistamine	+	Acute, chronic
<b>Macrophage</b> (modified monocytes)	Antigen processing, digestion	+	Late acute, chronic
<b>Lymphocyte</b>	Lymphokines	-	Chronic
<b>Plasma cell</b>	Antibody production	-	Chronic

*N.B. positive (+) means that cell is phagocytic*

- **Neutrophils** [polymorphonuclear leukocytes] phagocytize a foreign material (e.g. bacteria) and then attempt to oxidize and digest it through **oxidase** and **proteases**. These are the first inflammatory cells on the scene after tissue injury.
- **Eosinophils** are also phagocytic and possess many of the enzymes of the neutrophil. In addition, they can dispense [give out] antihistamine in an area of histamine release. The eosinophil is also associated with **allergic responses**. It is seen in both acute and chronic inflammation and become increased in **parasitic infestations**.
- **Lymphocytes** are simple-appearing cells with varied and complex functions. Briefly, some lymphocytes are in the T-cell system and produce various type of lymphokines<sup>(1)</sup> which have local effects. Immunoglobulins or antibodies can also be produced by this cell as a B cell. The lymphocyte characterizes chronic inflammation. Antibody production is the function of the plasma cell, a specialized B cell, which is also found in chronic inflammation. It is especially prominent in chronic inflammation involving mucosal surfaces.

<sup>(1)</sup> Lymphokines: [a substance produced by lymphocytes, such as interferon, that acts upon other cells of the immune system, e.g., by activating macrophages. ]



## Types of Inflammation:

- ❖ **Acute inflammation.** (immediate, short duration) It represents rapid response to injury or microbes designed to deliver leukocytes and plasma protein to the site of injury. Systemically, acute inflammation may be accompanied by fever. There may be a peripheral blood leukocytosis [  $\uparrow$  WBC], especially of neutrophils, along with increased number of immature forms of neutrophils (left shift). <sup>(1)</sup> Locally, it is the vascular response to tissue injury that is fundamental.

- (1) The initial response to tissue injury is an episode lasting from seconds to 5 minutes of translucent, arteriolar **vasoconstriction**, probably as a direct effect on the vessels.
- (2) In several minutes, the precapillary **arterioles dilate**, resulting in greater blood flow to the area. This lasts as long as the acute inflammation persists. The injured area reddens [becomes red] from increased blood flow; this is accompanied by increased vascular permeability.
- (3) As a consequence, interstitial edema (swelling) occurs owing to the escape of intravascular fluid, called an **exudate**. Then, the lymphatic vessels admit the escaped fluid into the lymphatic system and after several days the swelling subsides [reduce].

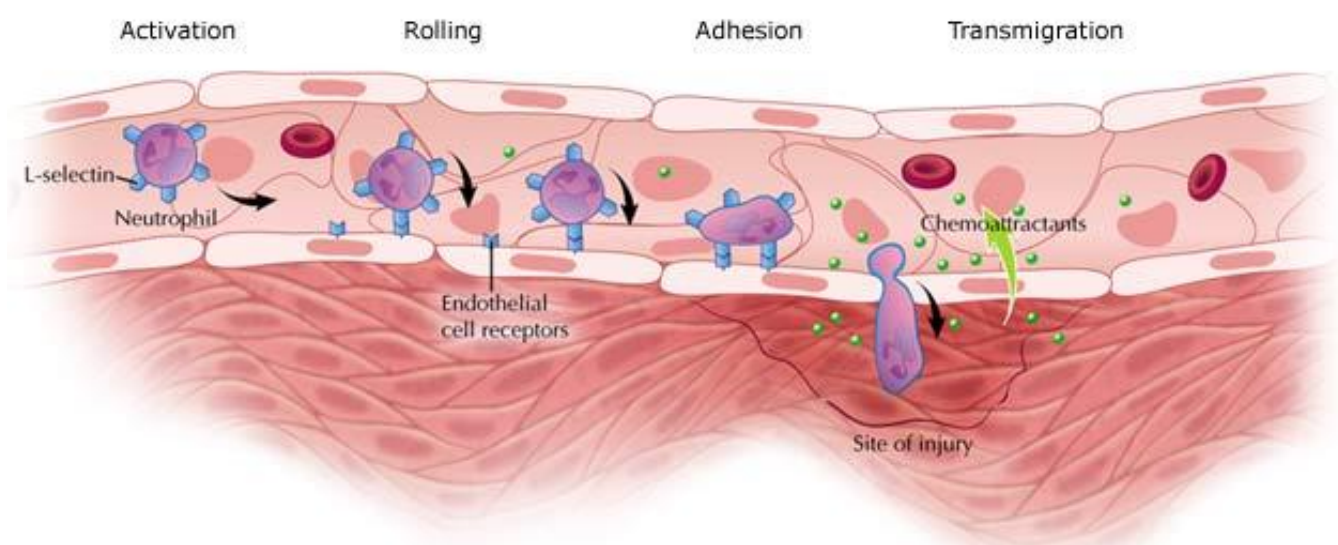
<sup>(1)</sup>Left shift: [is an increase in the number of immature leukocytes in the peripheral blood, particularly neutrophil]

## **Chemical mediators of the acute inflammatory response:**

Attraction of the interstitial leukocytes to the area of tissue injury occurs through chemotaxis or attraction by chemical agents. Numerous chemical mediators are responsible for the vascular events surrounding the acute inflammatory process.

## **Cellular events in acute inflammation:**

Cellular events begin soon after **vasodilatation**. Leukocytes (especially polymorphonuclear leukocytes) move from the center of the blood column in a vessel to the periphery (margination) and begin to adhere to the endothelium (pavementing). At the same time, the leukocytes move from the vessels into the interstitial tissues (emigration). Initially, it is the neutrophils that emigrate in the greatest number, whereas lymphocytes, macrophages and eosinophils also take part in this process, initially in fewer numbers. As the inflammation regresses, decreasing numbers of neutrophils emigrate, whereas more lymphocytes and macrophages make the trip and finally predominate when the process becomes **chronic** with the disappearance of the neutrophils.



- ❖ **Chronic inflammation.** (protracted) The preponderance of **lymphocytes, plasma cells** and **macrophages** in acute inflammation heralds [indicates] the transition from acute to chronic inflammation. Chronic inflammation may also arise **de novo** [from the beginning]. Whereas acute inflammation lasts days to weeks, chronic inflammation lasts months to years. Chronic inflammation is seen following acute inflammation when tissue injury persists. De novo chronic inflammation may be due to low-pathogenicity bacteria or chemical and physical agents that produce lower levels of tissue damage. Macrophages, lymphocytes, plasma cells, occasionally eosinophils, and even a few neutrophils are seen in chronic inflammation.

a) **Granulation tissue and chronic inflammation.**

Granulation tissue is often associated with chronic inflammation. It represents a **healing phase** following acute inflammation. Endothelial proliferation is **prominent**. At first, the interstitial tissue is edematous with an admixture of acute and chronic inflammatory cells; later, it is dominated by chronic inflammatory cells. Eventually, fibroblasts dominate in the interstitial tissues. Externally, granulation tissue has a red granular appearance due to endothelial proliferation.

- b) **Granulomatous inflammation:** a type of chronic inflammation: Substances present in the inflammatory response that are not digestible by neutrophils may evoke granulomatous inflammation. Characteristic of this type of chronic inflammation are granulomas, which form 0.5 to 2.0 mm aggregations of epithelioid macrophages surrounded by a rim of lymphocytes. Epithelioid macrophages have an appearance suggestive of squamous epithelial cells due to their abundant pink cytoplasm. Granulomatous inflammation may be caused by foreign bodies, mycobacterial infection (e.g. tuberculosis, leprosy, Schistosomiasis, the gumma of tertiary syphilis, cat-scratch disease, lymphogranuloma venereum, tularemia and others). At times, the granuloma contains caseous (cheese-like) necrosis as in tuberculosis. Multinucleated giant cells form from the cytoplasmic fusion of macrophages. A variation of the multinucleated or foreign body giant cell is the **Langhan's giant cell** which has nuclei arranged peripherally.



### **Gross configurations [Morphologic Patterns] of acute and chronic inflammation:**

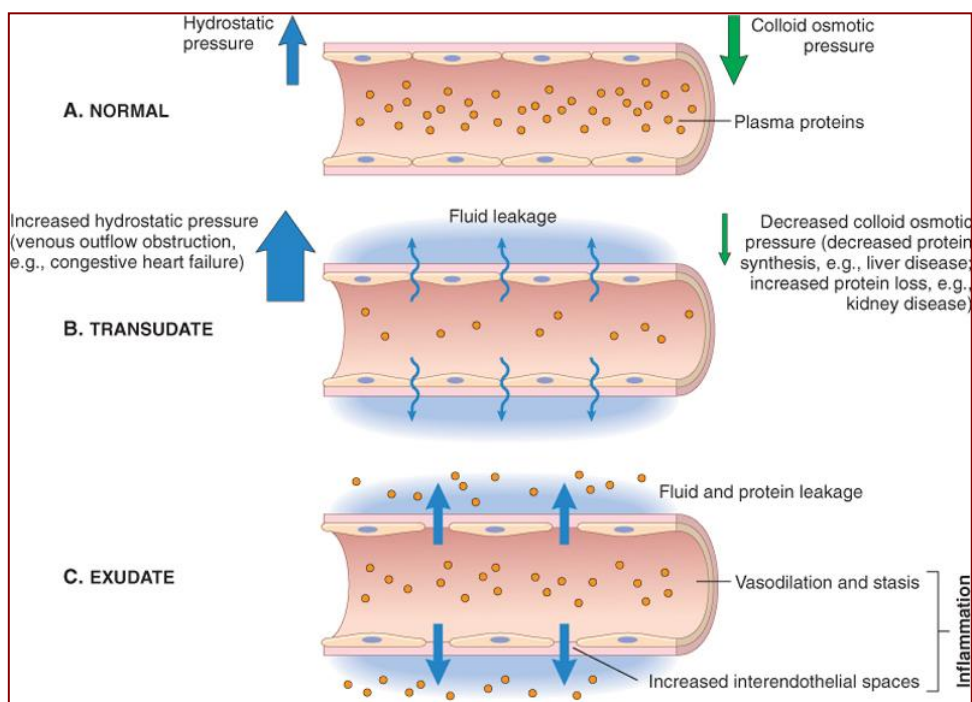
Acute and chronic inflammation conform themselves into several appearances.

- Fibrinous inflammation consists of neutrophils admixed with fibrin (e.g., fibrinous pericarditis).
- serous inflammation: An effusion of fluid under acute inflammatory conditions from a surface (often mesothelial).
- Suppurative inflammation exudes pus, a mixture of neutrophils and necrotic debris.  
An enclosed collection of pus is called an abscess. Mucosa-lined surfaces may exhibit catarrhal inflammation with the outpouring of watery mucus. Any ulcer is a focal defect usually on an epithelial surface where the epithelium is entirely lacking; the exposed tissue is covered by a fibrinopurulent exudate (mixture of fibrin and neutrophils)
- Cellulitis: denotes a spreading acute inflammation through interstitial tissues.

## Transudate, exudate and pus:

- (1) A transudate results when increased intravascular fluid escapes into the interstitial tissues related to increased hydrostatic pressure in the vessels. A good example is the pedal (ankle) edema seen in congestive heart failure. This fluid has low protein content and specific gravity ( $< 1.020$ ). However, in acute inflammation, the edema is caused by the escape of fluid into the interstitial tissues related to increased vascular permeability. This fluid is called an exudate. Because more protein escapes with the fluid compared with that which occurs with a transudate.
- (2) An exudate has a higher protein content and specific gravity ( $> 1.020$ ).
- (3) Pus [inflammatory exudate] consists mostly of neutrophils and necrotic debris, being high in protein content with a specific gravity greater than 1.020.

Fluid type	Condition	Content	Specific gravity <sup>(1)</sup>
<b>Transudate</b>	Increased hydrostatic pressure	Low protein	$< 1.020$
<b>Exudate</b>	Acute inflammation	High protein	$> 1.020$
<b>Pus</b>	Acute inflammation	High protein plus neutrophils	$> 1.020$



**Specific gravity:** [the ratio of the density of a substance to that of water]



## Mediators of acute inflammation:

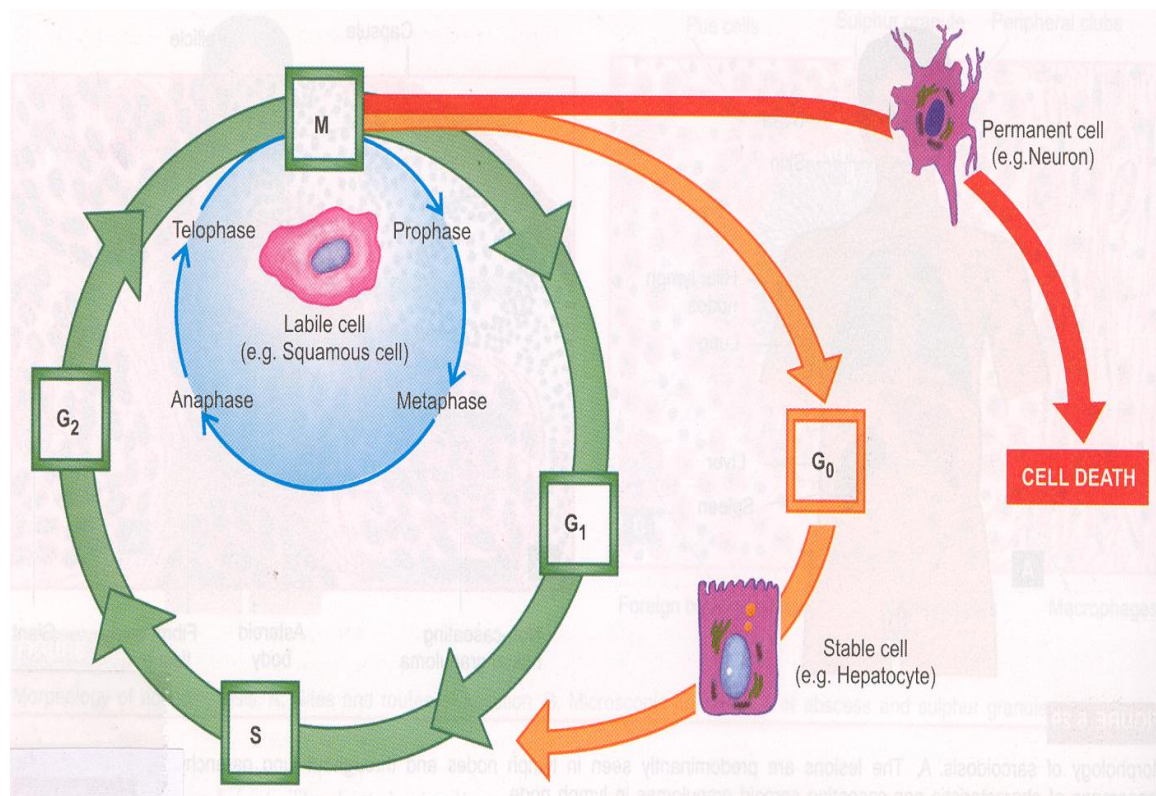
Mediator	Vasodilatation	Increased permeability		Chemotaxis	Opsonin	Pain
		Immediate	Sustained			
1-Istamine	+	+++	-			
Serotonin (5-HT)	+	+	-			
Bradykinin	+	+	-	-	-	+++
Complement 3a	-	+	-			
Complement 3b	-	-	-	-	+++	-
Complement 5a	-	++	-	+++	-	
Prostaglandins	+++	+++	+	+++	-	-
Leukotrienes	-	+++	+	+++	-	-
Lysosomal proteases	-	-	++*	-	-	-
Oxygen radicals	-	-	++*	-		

- **Proteases** and **oxygen-based** free radicals derived from neutrophils are believed to mediate a sustained increase in permeability by means of their damage to endothelial cells.
- **Histamine** and **serotonin** are produced by the degranulation of **basophils** and **mast cells** because of the action of some antigens.
- **Bradykin** is a metabolite of the Kinin system which is activated by the action of the **Hageman factor** (factor XII of coagulation).
- Complement is a **plasma protein**.
- **Prostaglandins** and **leukotrienes** are arachidonic acid metabolites.

## Regeneration and repair:

Regeneration and repair of a damage tissue occur through the reproduction of the normal, parent tissue or fibrosis [which leaves] scar. Whether regeneration or repair or both occurs depends on the regenerative capacity of the original damaged cells.

- **Labile cells** are rapidly regenerating cells (short life span), which can be readily regenerated. Epidermis is an example.
- **Stable cells** are longer-lived cells with a slower mitotic rate, but given proper conditions, these cells can regenerate to some extent. Liver and renal tubular cells are an example.
- **Permanent cells** have a long life span with no mitotic activity in post natal life. The neurons of the central nervous system are an example.
- **Supporting tissues.** The collagens, a series of complex polypeptides, bind epithelial and the various connective tissues to themselves and each other where appropriate, thus providing tensile strength. **Fibroblasts** secrete collagen. Basement membranes lie at the interface of cells and stroma. They support the overlying cells. Materials found in basement membranes include entactin, heparin sulfate, laminin, proteoglycan and type IV collagen.

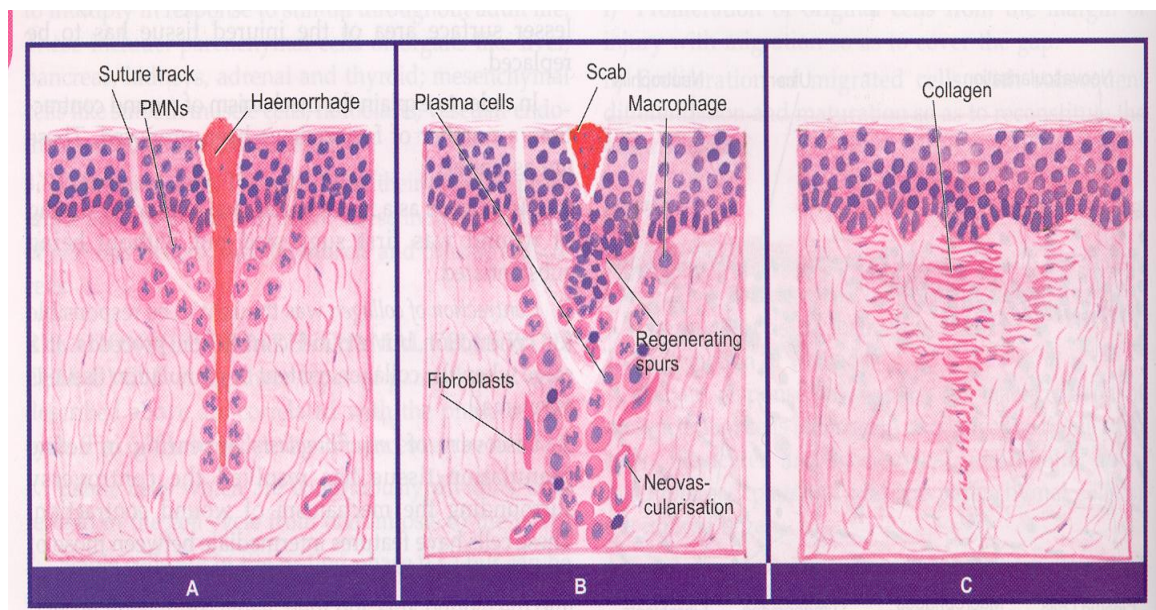


## Wound healing:

### Healing by first intention (primary union):

Healing by first intention occurs when wound edges are **approximated** and the wound is quickly covered with epithelium and bound together by collagen.

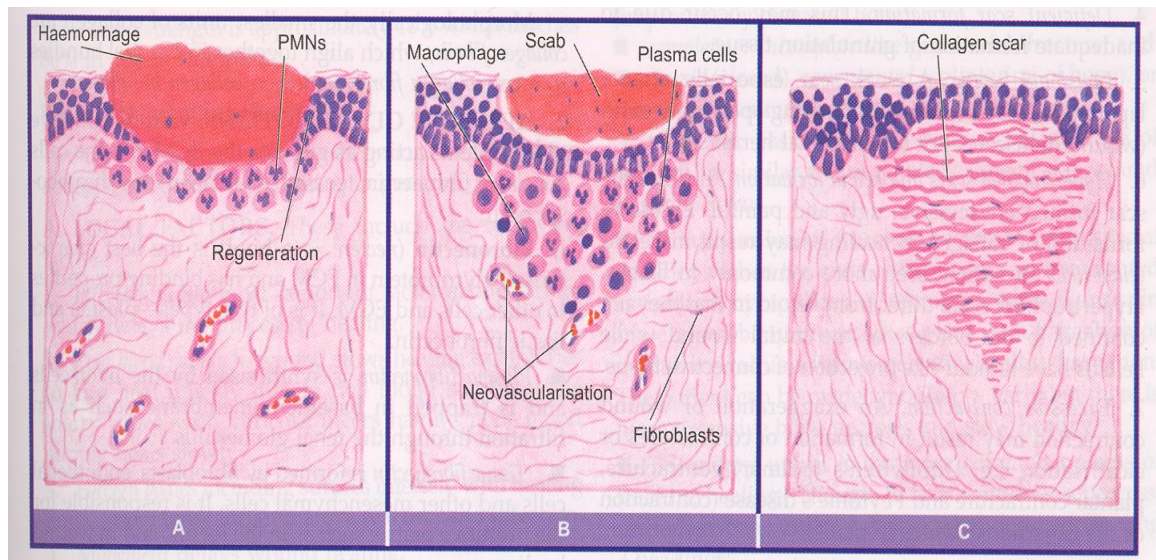
- At first, the surface epithelial gap and apposed edges of the connective tissue contain blood clot and debris.
- Epithelium is regenerated from the edges of the wound.
- Capillaries, neutrophils, macrophages and fibrocytes migrate into the clot.
- Within a few days, the scab (patch of dried, clotted blood) at the surface falls revealing re-epithelialization and the blood clot in the apposed tissues is removed by macrophages.
- Endothelial cells proliferate with the laying down of collagen by fibroblasts, producing granulation tissue.
- The phagocytic neutrophils progressively decrease in number as macrophages increase.
- As collagen in the gap increases, the blood vessels in the area decrease in number, and the scar begins to contract.
- Healing by first intention is best exemplified by the healing of an apposed surgical incision





### Healing by second intention (secondary union):

- Edges of the wound cannot be apposed in healing by second intention, leaving a defect containing blood clot and debris.
- The process of wound healing is similar to that of first intention, but it takes much longer. The same cells take part in this process. Granulation tissue is much more pronounced.
- In both types of healing, the wound contracts in the later stages due to the presence of the **myofibroblast**, a contractile cell that has properties of both fibroblasts and smooth muscle cells. Tensile strength of the wound in both kinds of healing gradually increases with more fibroblast activity and the laying down of collagen.



## **Abnormal repair:**

Wound repair does not always go well. The laying down of excessive collagen results in keloid <sup>(1)</sup> and fibrous adhesions formation.

- Bacterial infection of the wound,
- the presence of foreign bodies, poor blood supply, and
- lack of mobility may retard healing.
- Deficient scar formation may result from deficiencies of vitamin C or severe protein deficiencies.
- Retarded wound healing and deficient scar formation may cause wound separation at wound margin: a wound dehiscence. If a large wound cannot be totally covered by epithelium, the resulting ulcer may require a skin graft. Wound contractures is related to the action of myofibroblasts. This is seen especially following burns.

<sup>(1)</sup> Keloid: an area of irregular fibrous tissue formed at the site of a scar or injury.

