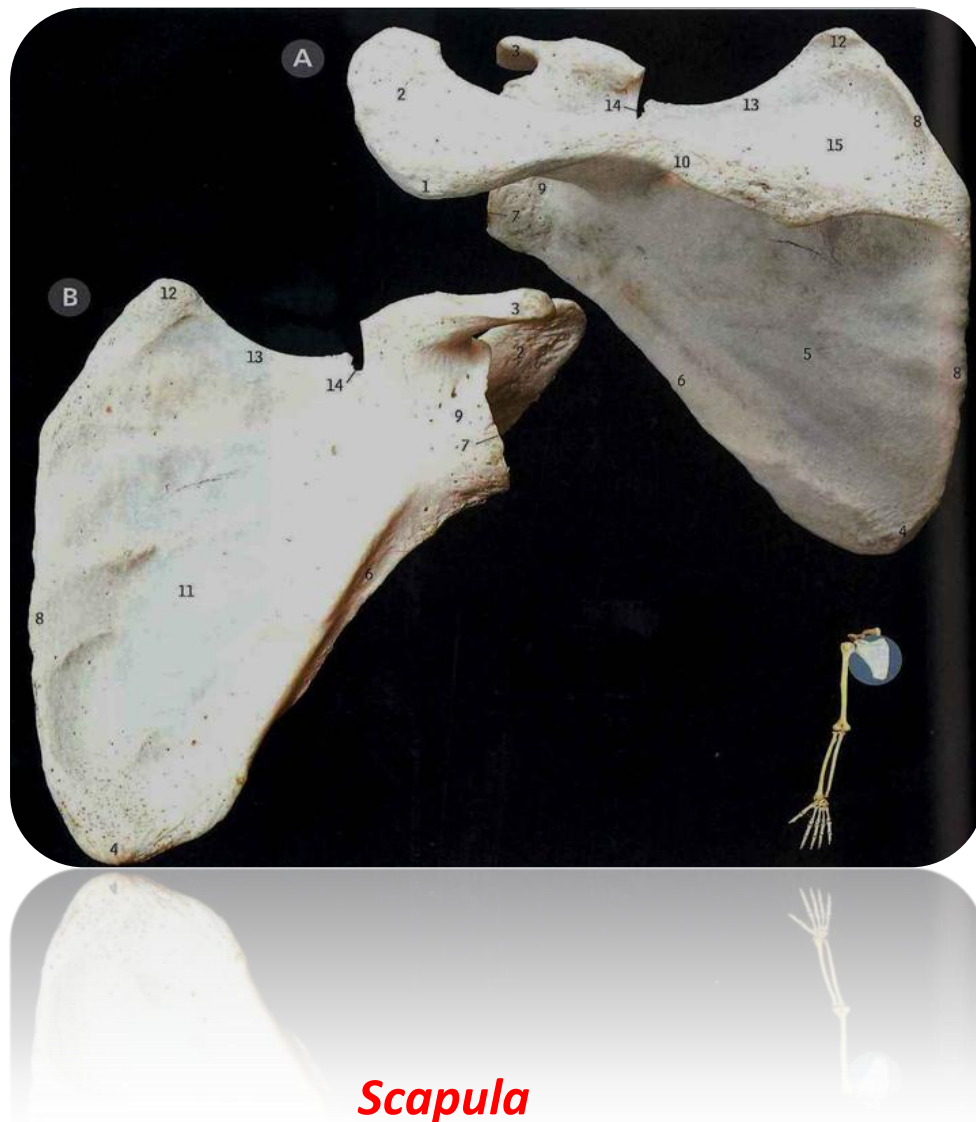


## Clavicle

<p><b>Features</b></p>	<ul style="list-style-type: none"> <li>▪ <i>Its medial 2/3 is convex forward.</i></li> <li>▪ <i>Its lateral 1/3 is concave forward.</i></li> <li>▪ <i>Its medial (sternal) end is rounded (5).</i></li> <li>▪ <i>Its lateral (acromial) end is flattened (1).</i></li> <li>▪ <i>2 Surfaces:</i> <ul style="list-style-type: none"> <li>• <i>Superior Surface</i></li> <li>• <i>Inferior Surface :</i> <ul style="list-style-type: none"> <li>- <i>Conoid tubercle (2)</i></li> <li>- <i>Trapezoid line(6)</i></li> </ul> </li> </ul> </li> </ul>
<p><b>Articulations and Joints</b></p>	<ul style="list-style-type: none"> <li>• <i>Sternoclavicular Joint with the Manubrium</i></li> <li>• <i>Costoclavicular Joint with the 1<sup>st</sup> rib</i></li> <li>• <i>Acromioclavicular Joint with the Acromial end of the scapula.</i></li> </ul>

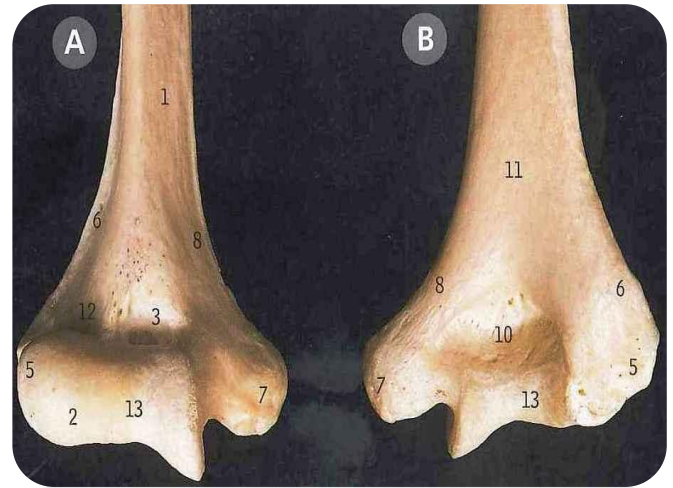


## Scapula

Posterior Surface	<ul style="list-style-type: none"> <li>▪ <b>Spine of the scapula</b>(10) lateral end of the spine → <b>Acromion</b>(2) superolateral angle → <b>Glenoid cavity</b>(7)</li> <li>▪ <b>The spine divides the posterior surface into:</b> <ul style="list-style-type: none"> <li>• <b>Supraspinous Fossa</b> (above).(15)</li> <li>• <b>Infraspinous Fossa</b> (below).(5)</li> </ul> </li> </ul>
Anterior surface	<ul style="list-style-type: none"> <li>• <b>Concave and forms the shallow Subscapular fossa</b>(11).</li> </ul>



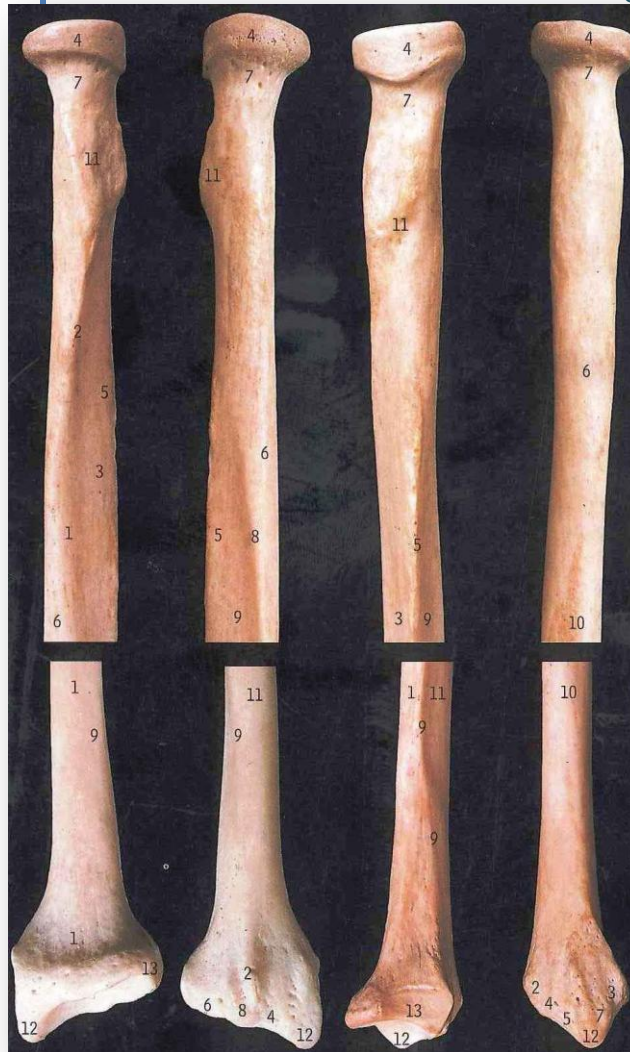
Upper End + Shaft



Lower End

## Humerus

<b>Upper End</b>	<ul style="list-style-type: none"> <li>• <b>Head</b>(5)</li> <li>• <b>Anatomical neck</b> (Immediately below the head)(1)</li> <li>• <b>Greater</b>(3)<b>&amp; Lesser</b> (8) <b>tubercles</b>(Separated by Intertubercular groove) (6)</li> <li>• <b>Surgical neck</b>(connects upper end with the shaft)(10)</li> </ul>
<b>Shaft</b>	<ul style="list-style-type: none"> <li>• <b>Deltoid tuberosity</b>(2)</li> <li>• <b>Spiral (Radial) groove</b>(Behind and below the tuberosity)</li> </ul>
<b>Lower End</b>	<ul style="list-style-type: none"> <li>• <b>Medial</b>(7)<b>&amp; Lateral</b>(5) <b>epicondyles</b></li> </ul>



**Radius** (LATERAL BONE)

<b>Proximal End</b>	<ul style="list-style-type: none"> <li>• <b>Head</b>(4)(small &amp; circular, Its upper surface is concave)</li> <li>• <b>Neck</b>(7)</li> <li>• <b>Radial (Bicipital) tuberosity</b>(11)</li> </ul>
<b>Shaft</b>	<ul style="list-style-type: none"> <li>▪ <b>3 Surfaces :</b> <ul style="list-style-type: none"> <li>• <b>Anterior Surface</b>(3)</li> <li>• <b>Lateral Surface</b>(6)</li> <li>• <b>Posterior Surface</b>(9)</li> </ul> </li> <li>▪ <b>Sharp medial interosseous border</b> (5)</li> <li>▪ <b>Pronator tubercle: halfway down the lateral side</b></li> </ul>
<b>Distal End</b>	<ul style="list-style-type: none"> <li>• <b>Styloid Process</b>(projects laterally)(12)</li> <li>• <b>Ulnar Notch</b>(on the medial surface)(13)</li> <li>• <b>Dorsal tubercle</b>(On the posterior surface)(2)</li> </ul>





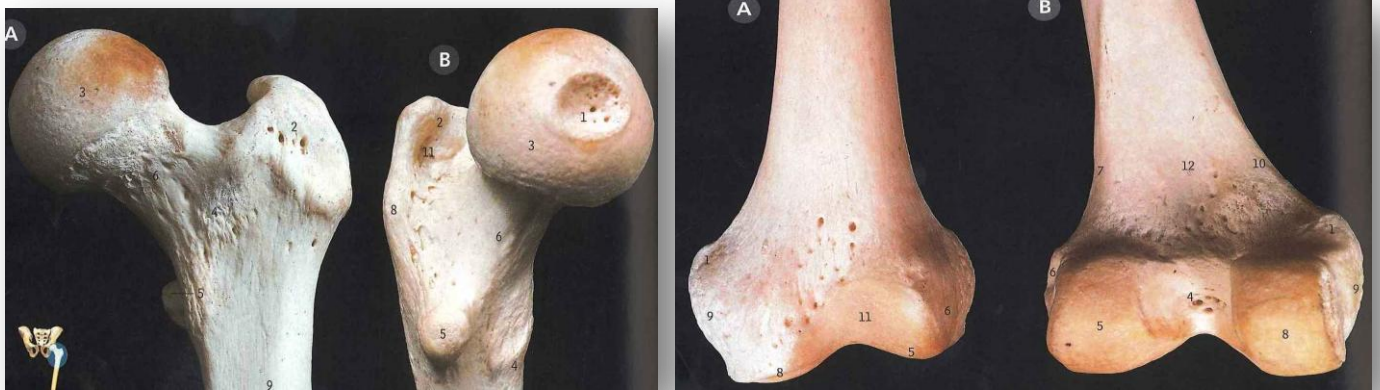
Proximal End



Distal End

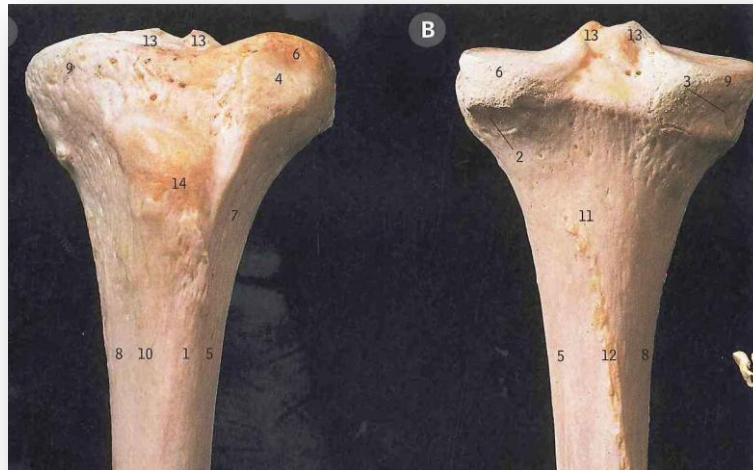
### **Ulna** (MEDIAL BONE)

<b>Proximal End</b> (Olecranon Process)	<ul style="list-style-type: none"> <li>• <i>Forms the prominence of the elbow.</i></li> <li>• <i>It has:</i> <ul style="list-style-type: none"> <li>▪ <i>Trochlear notch (anterior) (11).</i></li> <li>▪ <i>Triangular coronoid process (3).</i></li> <li>▪ <i>Radial notch (lateral) (9).</i></li> </ul> </li> </ul>
<b>Shaft</b>	<ul style="list-style-type: none"> <li>▪ <i>3 Surfaces :</i> <ul style="list-style-type: none"> <li>• <i>Anterior Surfaces</i></li> <li>• <i>Medial Surfaces</i></li> <li>• <i>Posterior Surfaces</i></li> </ul> </li> <li>▪ <i>2 Borders :</i> <ul style="list-style-type: none"> <li>• <i>Sharp lateral interosseous border(4).</i></li> <li>• <i>Rounded subcutaneous posterior border.</i></li> </ul> </li> </ul>
<b>Distal End</b>	<ul style="list-style-type: none"> <li>• <i>Small rounded head(3)</i></li> <li>• <i>Styloid process (medial)(7)</i></li> <li>• <i>Radial notch (lateral)</i></li> </ul>



## Femur

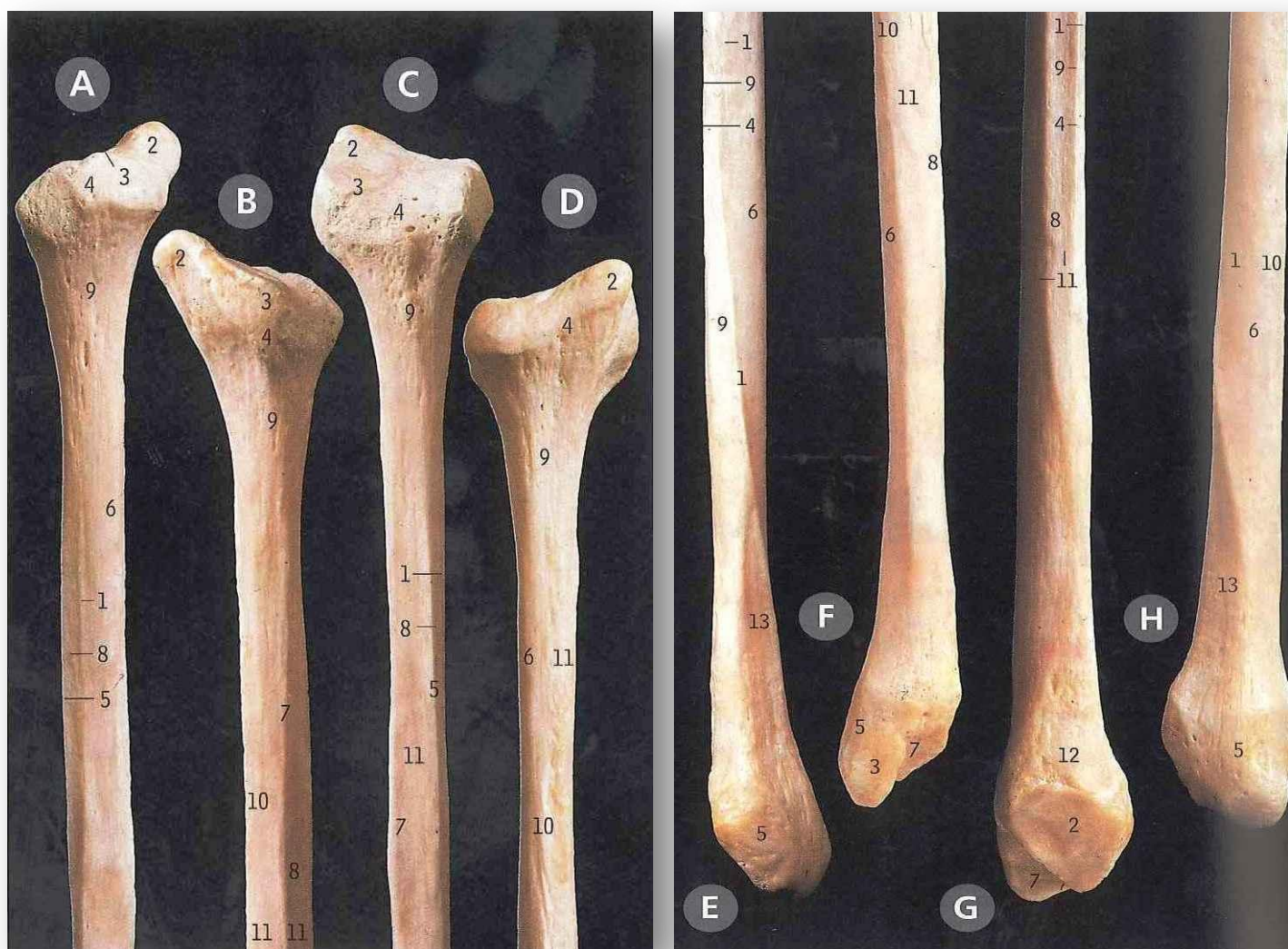
Upper end	<ul style="list-style-type: none"> <li>• <b>Head</b>(3) has a depression in the center (fovea capitis )(1).</li> <li>• <b>Neck</b>(connects the head to the shaft) (6)</li> <li>• <b>Greater (2) and lesser (5) trochanters</b> (Anteriorly: connecting the two trochanters the inter-trochanteric line. (4) Posteriorly: the inter-trochanteric crest (8)</li> </ul>
Shaft	<ul style="list-style-type: none"> <li>▪ <b>3 Borders :</b> <ul style="list-style-type: none"> <li>• <b>Medial border</b></li> <li>• <b>Lateral border</b></li> </ul> </li> <li><b>Thick posterior border"linea aspera" (4)</b> <ul style="list-style-type: none"> <li>- the gluteal tuberosity (1)</li> <li>- The medial margin of linea aspera continues below as medial supracondylar ridge (10) while the lateral margin becomes continues below with the lateral supracondylar ridge(7) .</li> <li>- a triangular area ,the popliteal surface(12) at the lower end of the shaft</li> </ul> </li> <li>•</li> <li>▪ <b>3 Surfaces :</b> <ul style="list-style-type: none"> <li>• <b>Medial Surface</b></li> <li>• <b>Lateral Surface</b></li> <li>• <b>Anterior Surface</b></li> </ul> </li> </ul>
Lower end	<ul style="list-style-type: none"> <li>• <b>Lateral (5) and Medial(8) condyles</b> (separated Anteriorly: by articular patellar surface (11) , and Posteriorly: by intercondylar notch) (4)</li> </ul>



## Tibia

Upper end	<ul style="list-style-type: none"> <li>• <b>Medial condyle</b> (large and slightly oval) (9)</li> <li>• <b>Lateral condyle</b> (small and circular) (6)</li> <li>• <b>Intercondylar area</b> (between the two condyle, rough &amp; has intercondylar tubercle) (13)</li> </ul>
Shaft	<ul style="list-style-type: none"> <li>▪ <b>3 Borders :</b> <ul style="list-style-type: none"> <li>• <b>Anterior border</b> (sharp and subcutaneous)</li> <li>• <b>Medial border</b></li> <li>• <b>Lateral 'interosseous' border</b></li> </ul> </li> <li>▪ <b>3 Surfaces :</b> <ul style="list-style-type: none"> <li>• <b>Medial Surface</b> (subcutaneous)</li> <li>• <b>Lateral Surface</b></li> <li>• <b>Posterior Surface</b></li> </ul> </li> <li>▪ <b>Tibial tuberosity</b> (14)</li> </ul>
Lower end	<ul style="list-style-type: none"> <li>• <b>Medial malleolus</b> (6)</li> <li>• <b>Fibular notch</b> (2)</li> </ul>





## Fibula

Upper end	<ul style="list-style-type: none"> <li>• <b>Head (4)</b></li> <li>• <b>Styloid process (2)</b></li> <li>• <b>Neck (9)</b></li> </ul>
Shaft	<ul style="list-style-type: none"> <li>• <b>4 borders</b></li> <li>• <b>4 surfaces</b></li> </ul>
Lower end	<ul style="list-style-type: none"> <li>• <b>Lateral malleolus</b>(lateral surface : subcutaneous , medial surface : smooth)(5)</li> </ul>



**Done By :**

Aos Aboabat  
Mohanned Al Essa  
Mayyadah Al-Abdely

Samar shetawe  
Ayan Hussain  
Haya Al-Otaibi