

Anatomy practical Team 430



*Thanks for all who cooperate with us 2 finish this awesome work
and wish u all the best 430 =)*

The anatomy team:

Samar Shetawe. Mohanned Al Essa.

Ayan Hussain. AOs Aboabat.

Mayyadah Al-Abdely. Haya Al-Otaibi.

Hanan Al.salman.

Muscles of the upper limb

**pectoral region:*

Pectoralis major

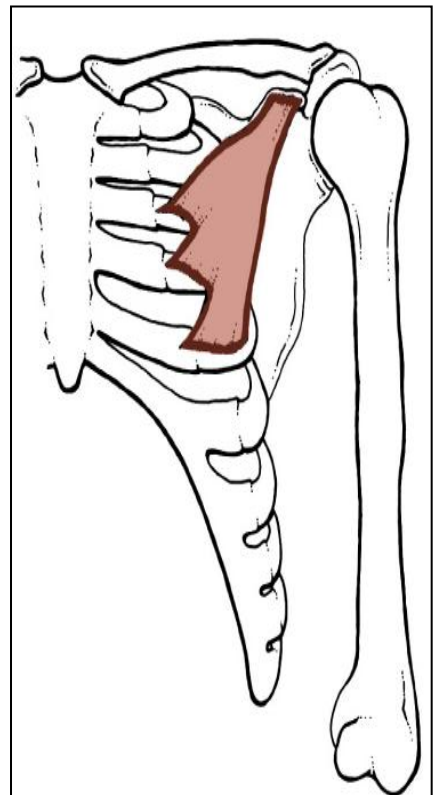
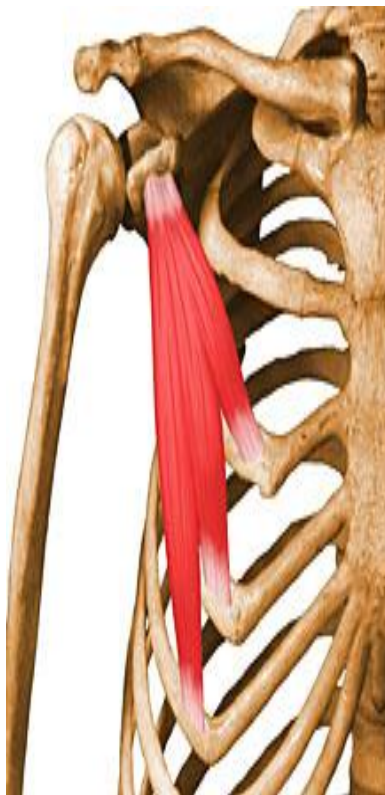
<u>Muscle</u>	<u>Origin</u>	<u>Insertion</u>	<u>Nerve Supply</u>
<i>Pectoralis major</i>	<u>Clavicular head:</u> From medial ½ of the front of the clavicle. <u>Sternocostal head:</u> From , Sternum. Upper 6 costal cartilages. Aponeurosis of external oblique.	Lateral lip of bicipital groove.	medial & lateral pectoral nerves



Anatomy practical Team 430

Pectoralis mainor

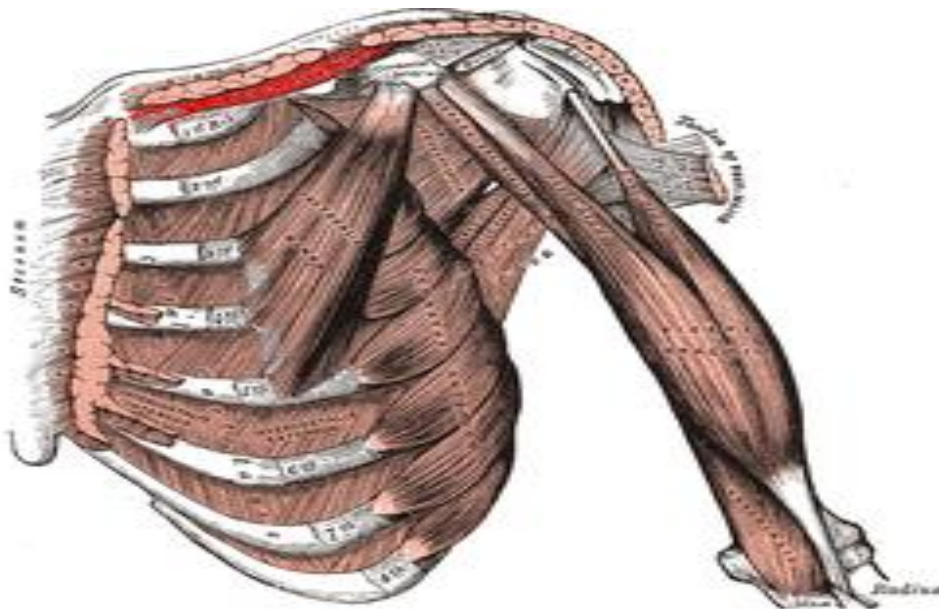
<u>Muscle</u>	<u>Origin</u>	<u>Insertio</u>	<u>Nerve Supply</u>
<i>Pectoralis minor</i>	<u>from 3rd, 4th, and 5th ribs close to their cartilages</u>	Coracoids process	medial pectoral nerves



Anatomy practical Team 430

Subclavius

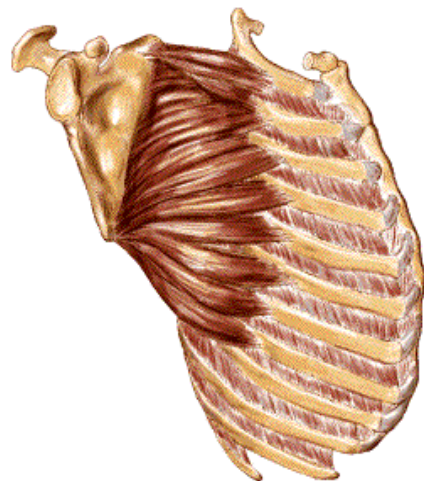
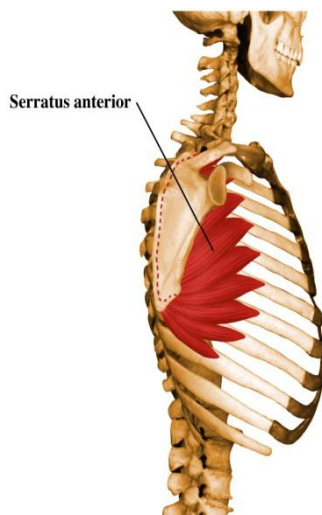
<u>Muscle</u>	<u>Origin</u>	<u>Insertion</u>	<u>Nerve Supply</u>
<i>Subclavius</i>	From 1 st rib at the junction with costal cartilage	Subclavian groove at the inferior surface of <u>middle 1/3 of clavicle.</u>	nerve to subclavius from <u>upper trunk of brachial plexus</u>



Anatomy practical Team 430

Serratus anterior

<u>Muscle</u>	<u>Origin</u>	<u>Insertion</u>	<u>Nerve Supply</u>
<i>Serratus anterior</i>	Upper eight ribs.	Medial border and inferior angle of <u>scapula</u> .	Long thoracic nerve

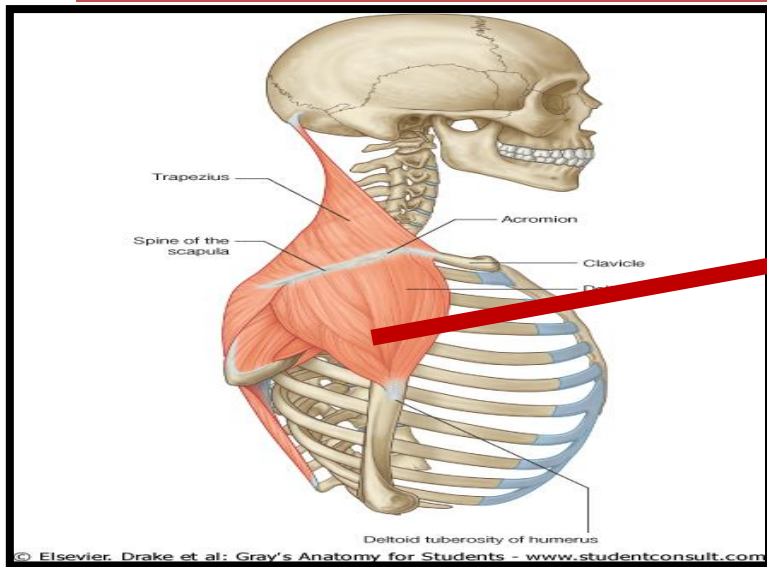


Anatomy practical Team 430

*shoulder muscles:

Deltoid

<u>Muscle</u>	<u>Origin</u>	<u>Insertion</u>	<u>Nerve Supply</u>
<i>Serratus anterior</i>	lateral 1/3 of clavicle + acromion & spine of scapula..	Deltoid teberosity of the humerus	Axillary nerve

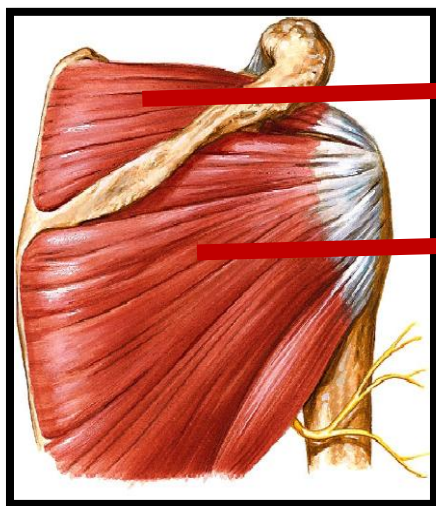


Deltoid

Anatomy practical Team 430

Suraspinatus and infraspinatus

<u>Muscle</u>	<u>Origin</u>	<u>Insertion</u>	<u>Nerve Supply</u>
<i>Suraspinatus</i>	<i>Suraspinous fossa</i>	Greater Tuberosity of the humerus	Supscapular nervr
<i>infraspinatus</i>	<i>infraspinous fossa</i>	Greater Tuberosity of the humerus	Supscapular nervr



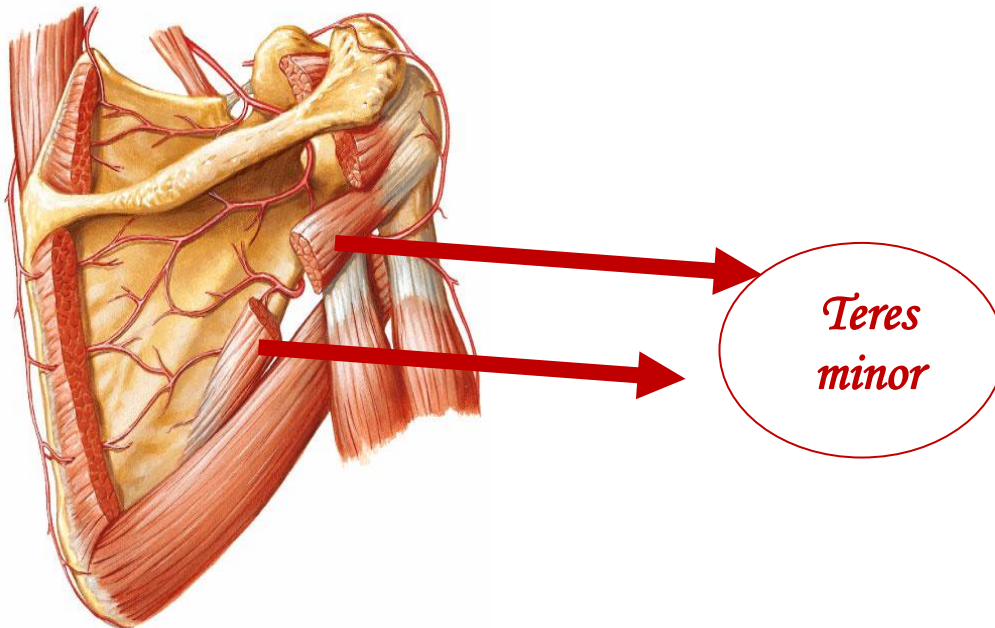
Suraspinatus

infraspinatus

Anatomy practical Team 430

Teres minor

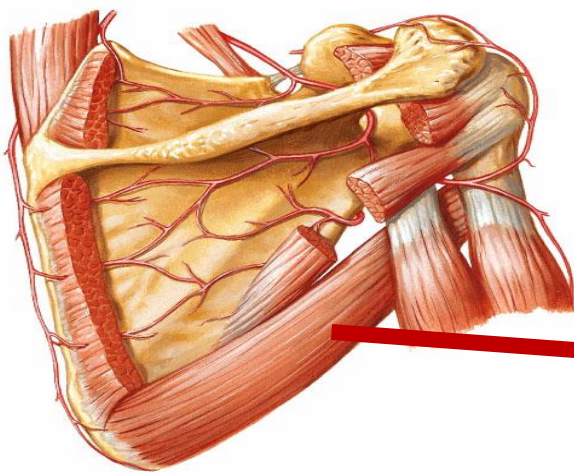
<u>Muscle</u>	<u>Origin</u>	<u>Insertion</u>	<u>Nerve Supply</u>
<i>Teres minor</i>	Lateral border of the scapula	Greater Tuberosity of the humerus	Axillary nerve



Anatomy practical Team 430

Teres major

<u>Muscle</u>	<u>Origin</u>	<u>Insertion</u>	<u>Nerve Supply</u>
<i>Teres major</i>	Lateral border of the scapula	Bicipital groove of the humerus	Lower subscapular nerve

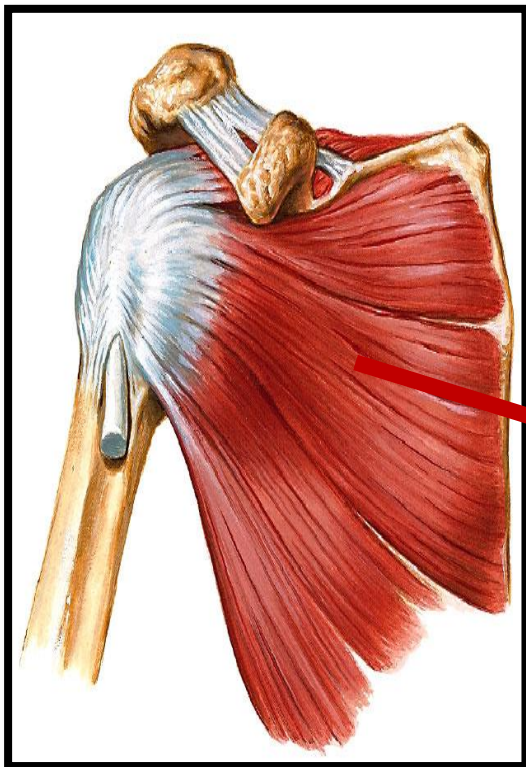


Teres major

Anatomy practical Team 430

supscapularis

<u>Muscle</u>	<u>Origin</u>	<u>Insertion</u>	<u>Nerve Supply</u>
<i>supscapularis</i>	<i>Supscapular fossa</i>	Lesser tuberosity of the humerus	Upper and Lower subscapular nerve



supscapularis

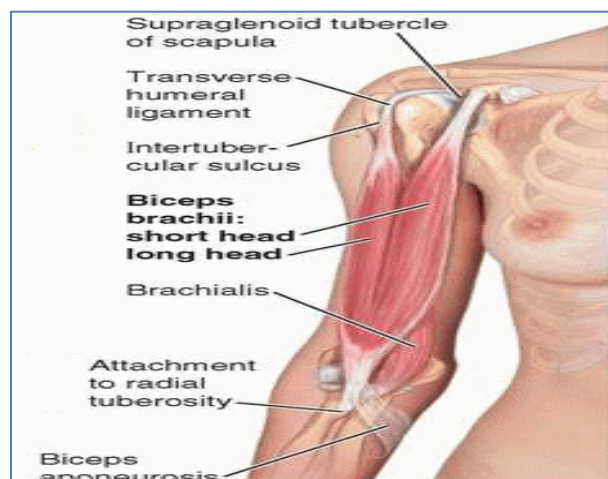
Anatomy practical Team 430

*Muscles of the Arm;

-Anterior compartment

biceps brachialis •

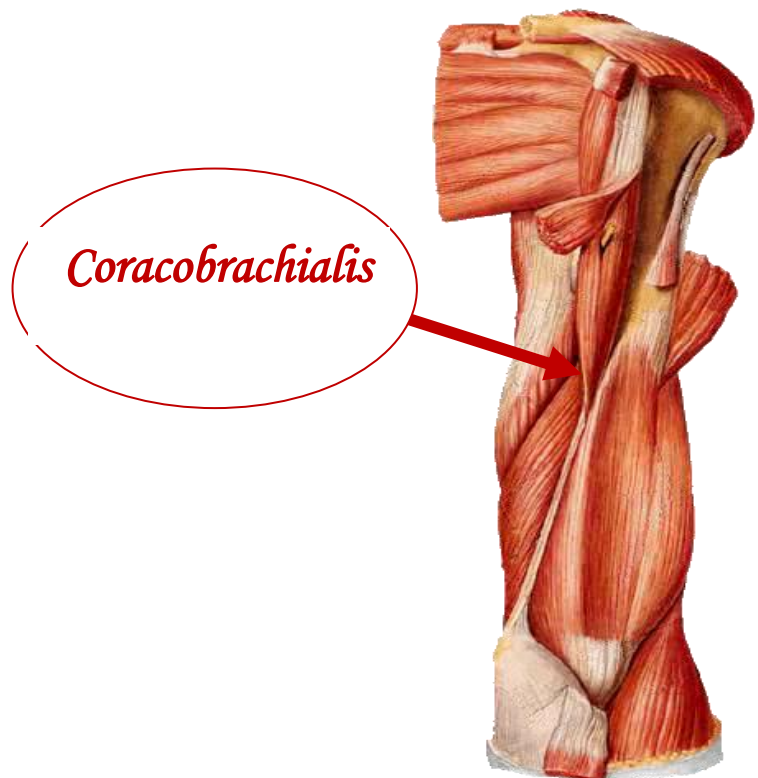
<u>Muscle</u>	<u>Origin</u>	<u>Insertion</u>	<u>Nerve Supply</u>
<i>biceps • brachialis</i>	Long head ;from the supraglenoid tubercle of scapula Short head ;from the tip of coronoid process of scapula	In the posterior part of the radial tuberosity.	Musculocutaneous



Anatomy practical Team 430

Coracobrachialis

<u>Muscle</u>	<u>Origin</u>	<u>Insertion</u>	<u>Nerve Supply</u>
<i>Coracobrachialis</i>	<i>Tip of the coracoid process</i>	Middle of the medial side of the shaft of the humerus	Musculocutaneous



Anatomy practical Team 430

brachialis •

<u>Muscle</u>	<u>Origin</u>	<u>Insertion</u>	<u>Nerve Supply</u>
<i>brachialis</i>	front of the lower half of humerus	anterior surface of coronoid process of ulna	Musculocutaneous And Radial nerve

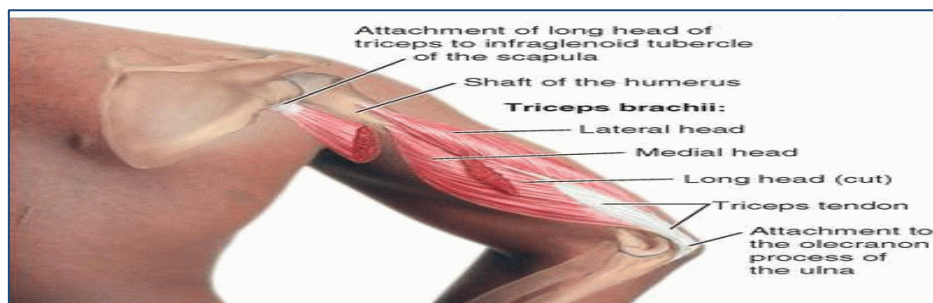


Anatomy practical Team 430

*deep group;

Triceps

<u>Muscle</u>	<u>Origin</u>	<u>Insertion</u>	<u>Nerve Supply</u>
<i>Triceps</i>	Long head; from infraglenoid tubercle of the scapula Lateral head; upper half of the posterior surface of the shaft of humerus above the spiral groove Medial head; lower half of the posterior surface of the shaft of humerus below the spiral groove	Common tendon inserted into the upper surface of the olecranon process of ulna	Radial nerve



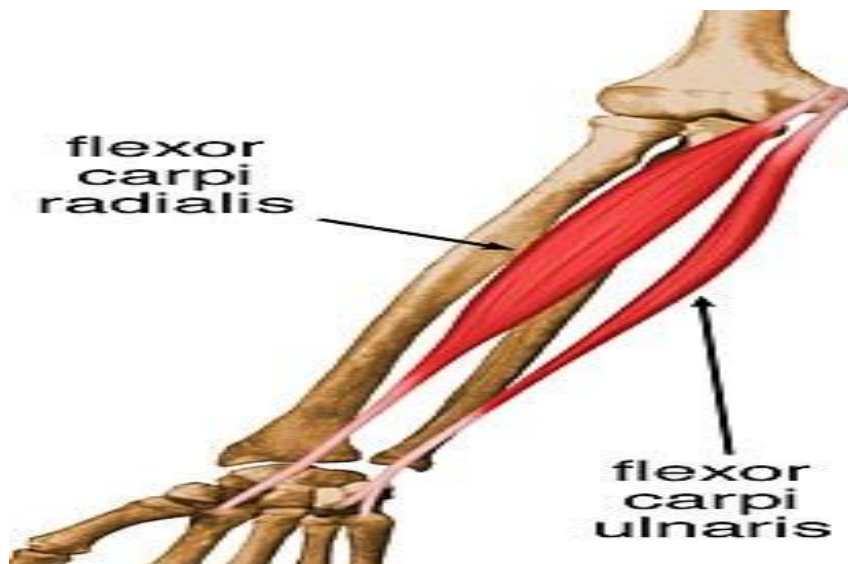
Anatomy practical Team 430

*muscles of the forearm;

-flexor group;

Flexor Carpi Radialis

<u>Muscle</u>	<u>Origin</u>	<u>Insertion</u>	<u>Nerve Supply</u>
<i>Flexor Carpi Radialis</i>	the common flexor origin (front of medial epicondyle)	Base of 2 nd metacarpal bone	median .N



Anatomy practical Team 430

Flexor Carpi Ulnaris

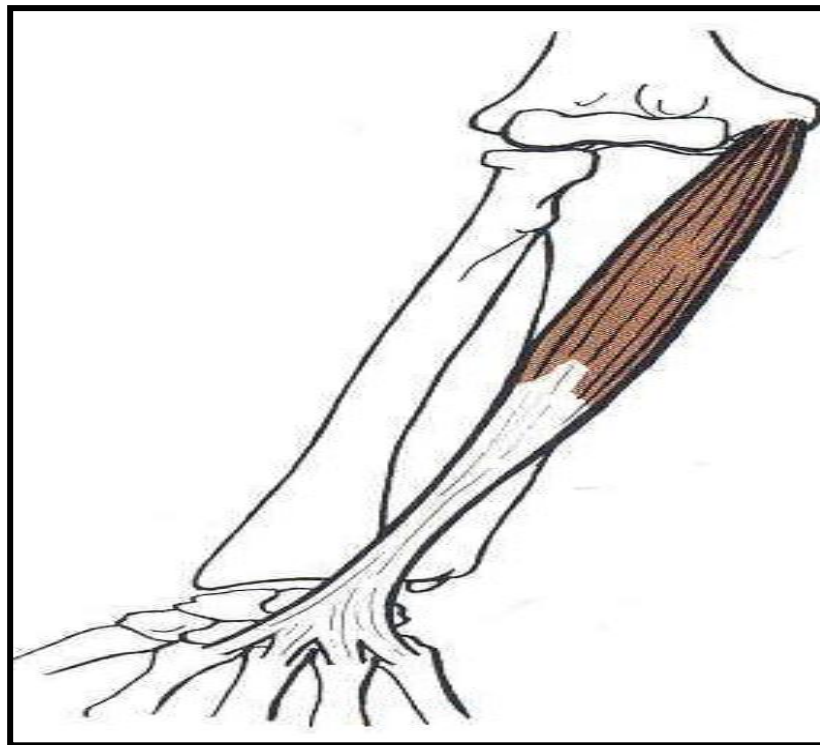
<u>Muscle</u>	<u>Origin</u>	<u>Insertion</u>	<u>Nerve Supply</u>
<i>Flexor Carpi Ulnaris</i>	the common flexor origin (front of medial epicondyle)	Pisiform, hook of hamate, 5 th metacarpal bone	Ulnar .N



Anatomy practical Team 430

Palmaris longus

<u>Muscle</u>	<u>Origin</u>	<u>Insertion</u>	<u>Nerve Supply</u>
<i>Palmaris longus</i>	the common flexor origin (front of medial epicondyle)	into the flexor retinaculum & palmar aponeurosis.	Median .N



Anatomy practical Team 430

Pronator teres

<u>Muscle</u>	<u>Origin</u>	<u>Insertion</u>	<u>Nerve Supply</u>
<i>Pronator teres</i>	the common flexor origin (front of medial epicondyle)	Middle of the lateral surface of the radius	Median .N



Anatomy practical Team 430

*intermediate group;

Flexor Digitorum Superficialis

<u>Muscle</u>	<u>Origin</u>	<u>Insertion</u>	<u>Nerve Supply</u>
<i>Flexor Digitorum Superficialis</i>	-the common flexor origin(front of medial epicondyle), Medial coronoid process -Radial tuberosity	Splits into 4 tendons which insert to the sides of the middle Phalange of the four fingers	Median .N



Anatomy practical Team 430

*Deep group;

Flexor Digitorum profundus

<u>Muscle</u>	<u>Origin</u>	<u>Insertion</u>	<u>Nerve Supply</u>
<i>Flexor Digitorum profundus</i>	Proximal 3/4 of the medial surface of the ulna. •	Bass of the distal phalanges of the medial four digits.	Median .N And the medial part part by ulnar N.



Anatomy practical Team 430

Flexor Pollicis Longus

<u>Muscle</u>	<u>Origin</u>	<u>Insertion</u>	<u>Nerve Supply</u>
<i>Flexor Pollicis Longus</i>	Middle anterior surface of the radius	Base of the distal phalanx of the thumb .	Median .N



Anatomy practical Team 430

Pronator quadratus

<u>Muscle</u>	<u>Origin</u>	<u>Insertion</u>	<u>Nerve Supply</u>
<i>Pronator quadratus</i>	Distal fourth of the anterior surface of the ulna.	Distal fourth of the anterior surface of the radius.	Median .N

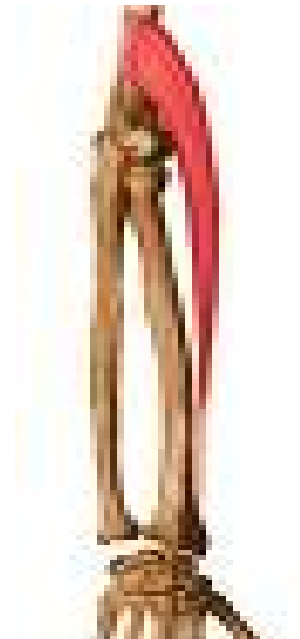


Anatomy practical Team 430

*extensor group;.

brachioradialis

<u>Muscle</u>	<u>Origin</u>	<u>Insertion</u>	<u>Nerve Supply</u>
<i>brachioradialis</i>	Lateral supracondylar ridge of the humerus.	Base of the styloid process of the radius.	radial .N

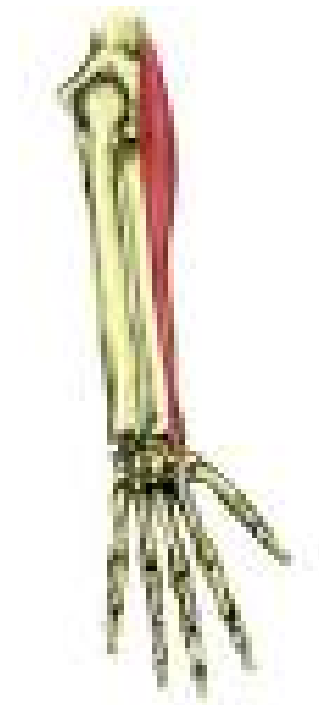


Abductor pollicis longus, Extensor pollicis brevis, Extensor pollicis longus, Extensor indicis, Supinator.

Anatomy practical Team 430

Extensor carpi radialis longus

<u>Muscle</u>	<u>Origin</u>	<u>Insertion</u>	<u>Nerve Supply</u>
<i>Extensor carpi radialis longus</i>	Lateral supracondylar ridge of the humerus.	Posterior surface of the base of the second metacarpal bone.	radial .N



★Muscles of the back★

TRAPEZIUS

<u>Muscle</u>	<u>Origion</u>	<u>Insertion</u>	<u>Nerve Supply</u>
TRAPEZIUS (1)	Spines of cervical & thoracic vertebrae	lateral 1/3 of clavicle + acromion & spine of scapula.	Spinal part of accessory (11th cranial) nerve



1

Anatomy practical Team 430

LEVATOR SCAPULAE

<u>Muscle</u>	<u>Origion</u>	<u>Insertion</u>	<u>Nerve Supply</u>
<i>LEVATOR SCAPULAE(2)</i>	cervical transverse processes	medial border of scapula	dorsal scapular nerve



2

Anatomy practical Team 430

RHOMBOID MINOR & MAJOR

<u>Muscle</u>	<u>Origion</u>	<u>Insertion</u>	<u>Nerve Supply</u>
<i>RHOMBOID MINOR (3) & MAJOR (4)</i>	thoracic spines	medial border of scapula	dorsal scapular nerve

3



4

Anatomy practical Team 430

LATISSIMUS DORSI

<u>Muscle</u>	<u>Origion</u>	<u>Insertion</u>	<u>Nerve Supply</u>
<i>LATISSIMUS DORSI</i>	spines of thoracic vertebrae	bicipital groove of humerus	thoracodorsal nerve