

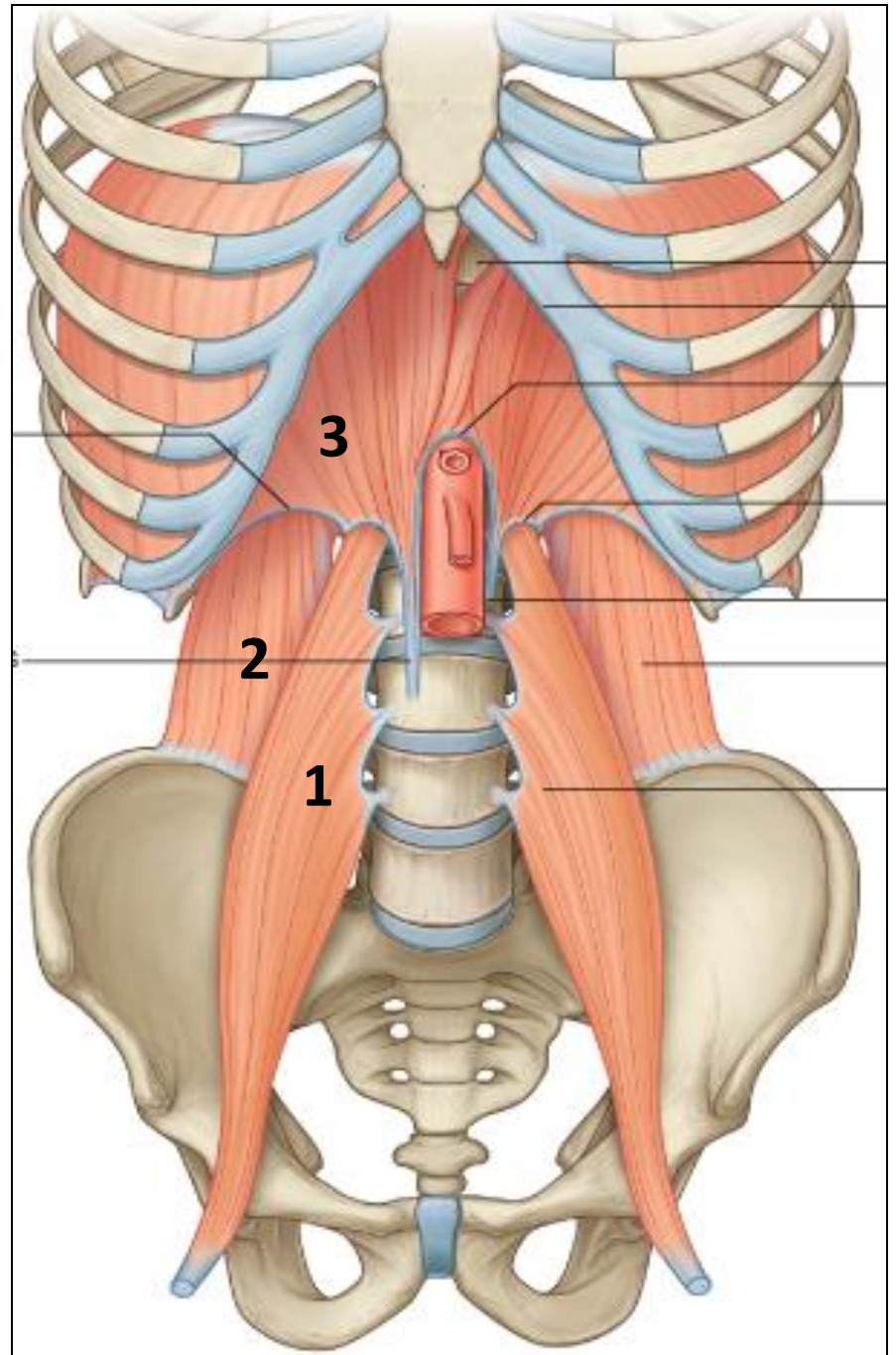
## *\*Renal Block:.*

### *\*Anatomy Team Students-430:.*

- Mohanned Al Essa.
- Samar Shetawe .
- Ayan Hussain.-
- Haya Al-Otabibi.-
- Mayyada Al Abdely.

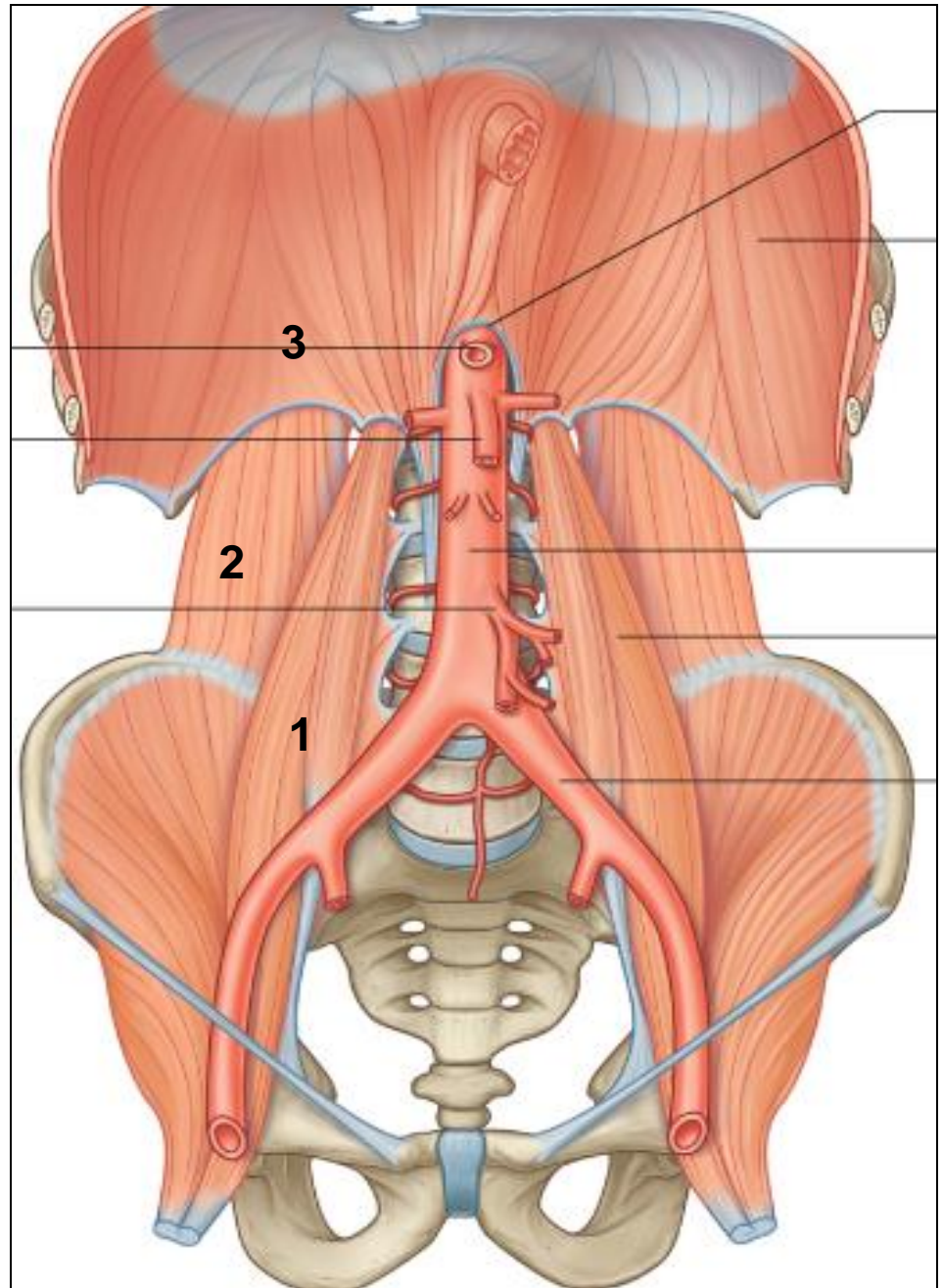
# Q 1

- Identify the muscles:
- **1-** Psaos Major
- **2-** Quadratus Lumborum
- **3-** Diaphragm



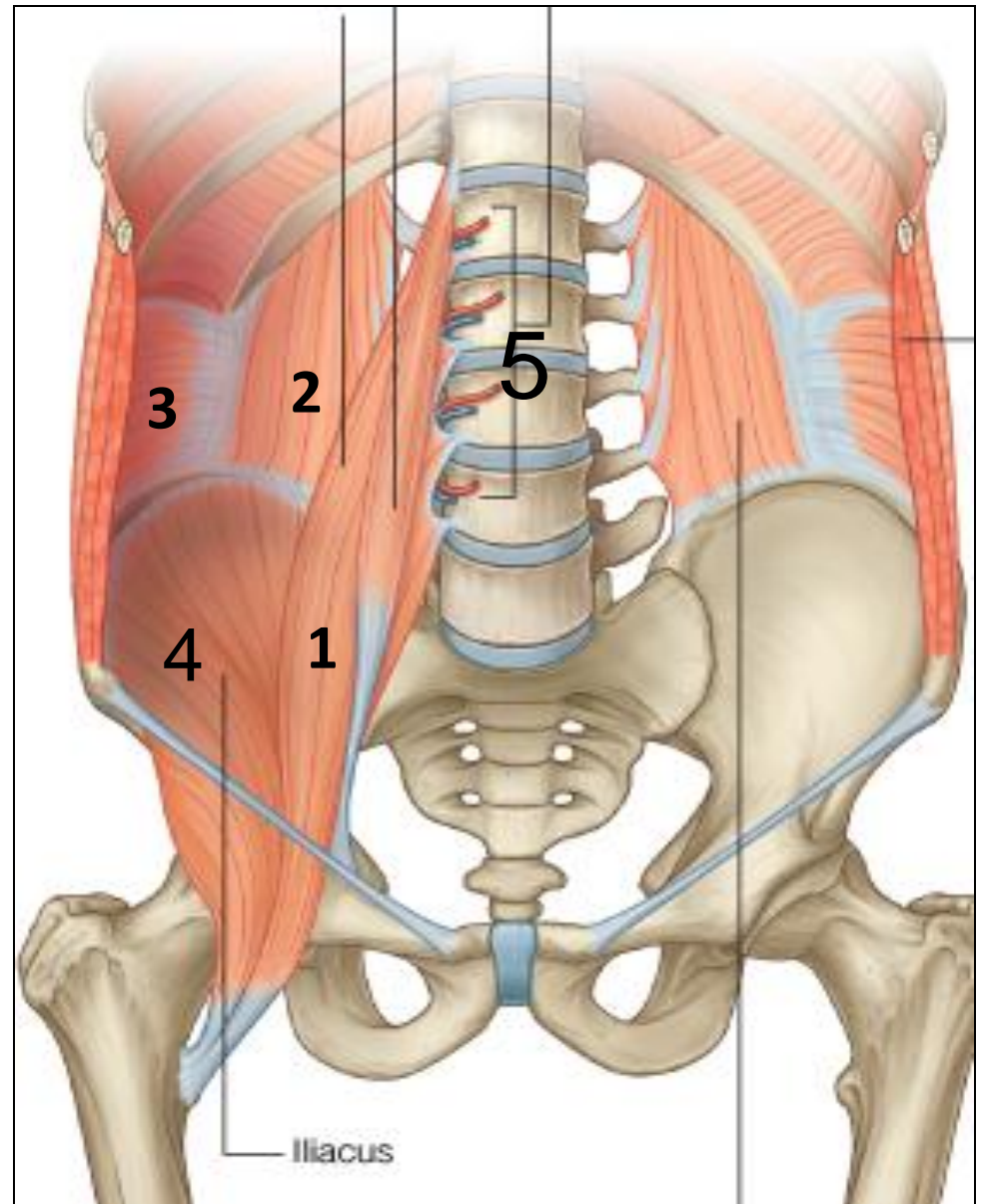
## Q 2

- Identify the muscles:
- 1- Psaos Major
- 2- Quadratus Lumborum
- 3- Diaphragm



# Q 3

- The 4 muscles lie behind the kidney are:
- 1- Psaos Major
- 2- Quadratus Lumborum
- 3-transversus abdominis.
- 4-iliacus
- 5-lumber vertebrae.



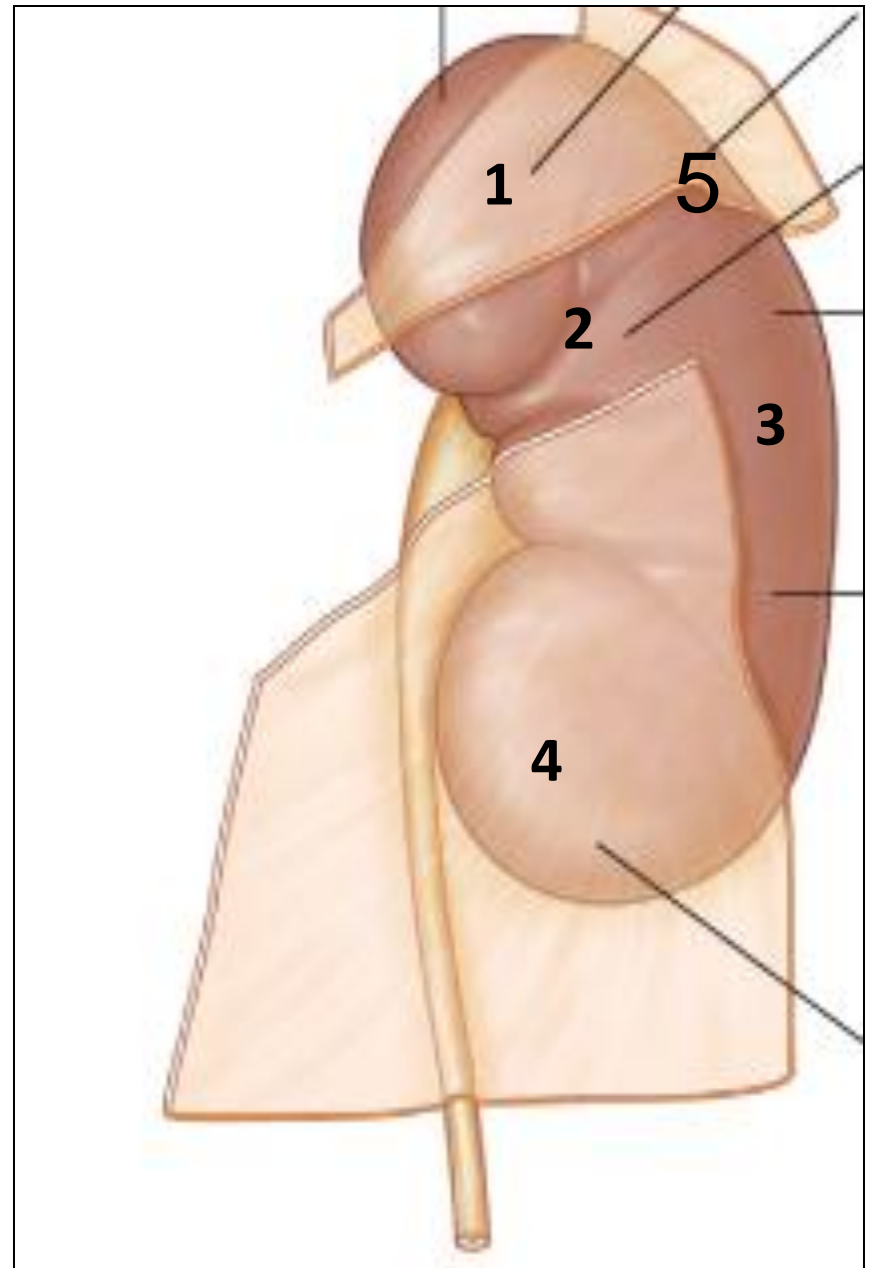


## Q 4

- **Identify the structures related to the marked areas:**

- 1- Stomach
- 2- Pancreas
- 3- Descending colon
- 4- coils of Jejunum
- 5- spleen.

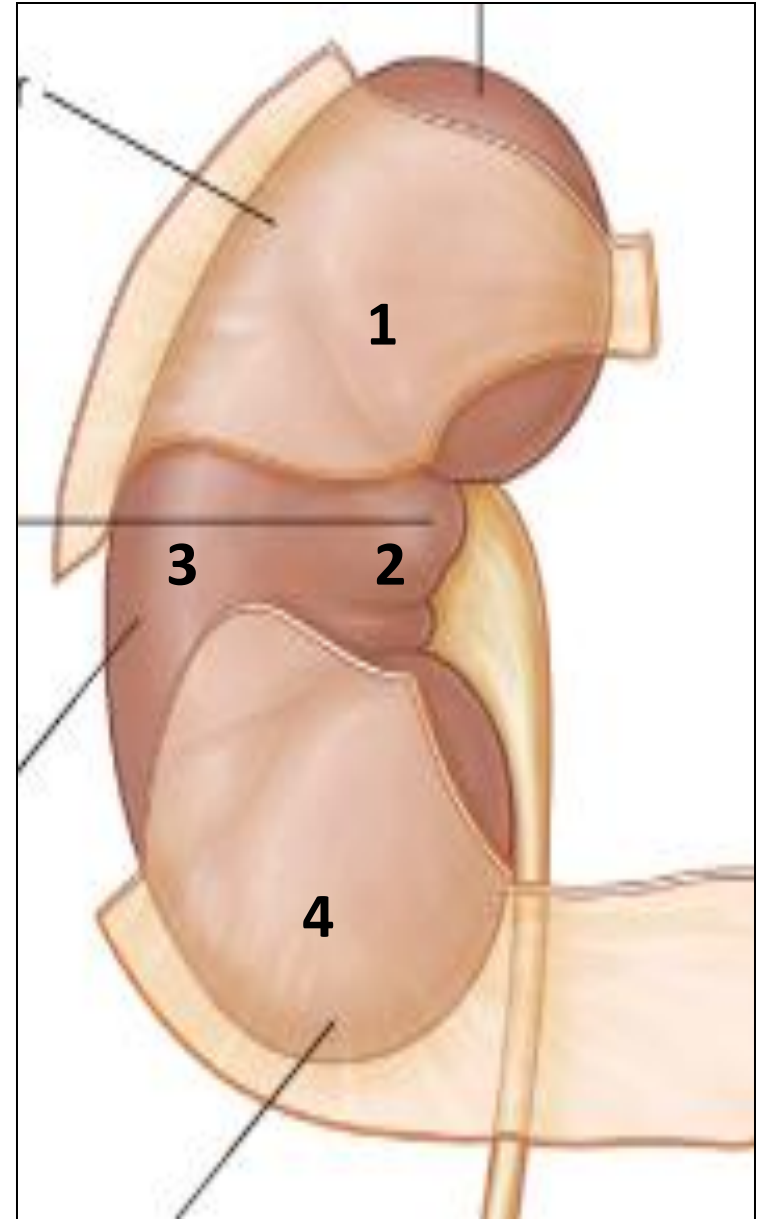
(Left kidney)



# Q 5

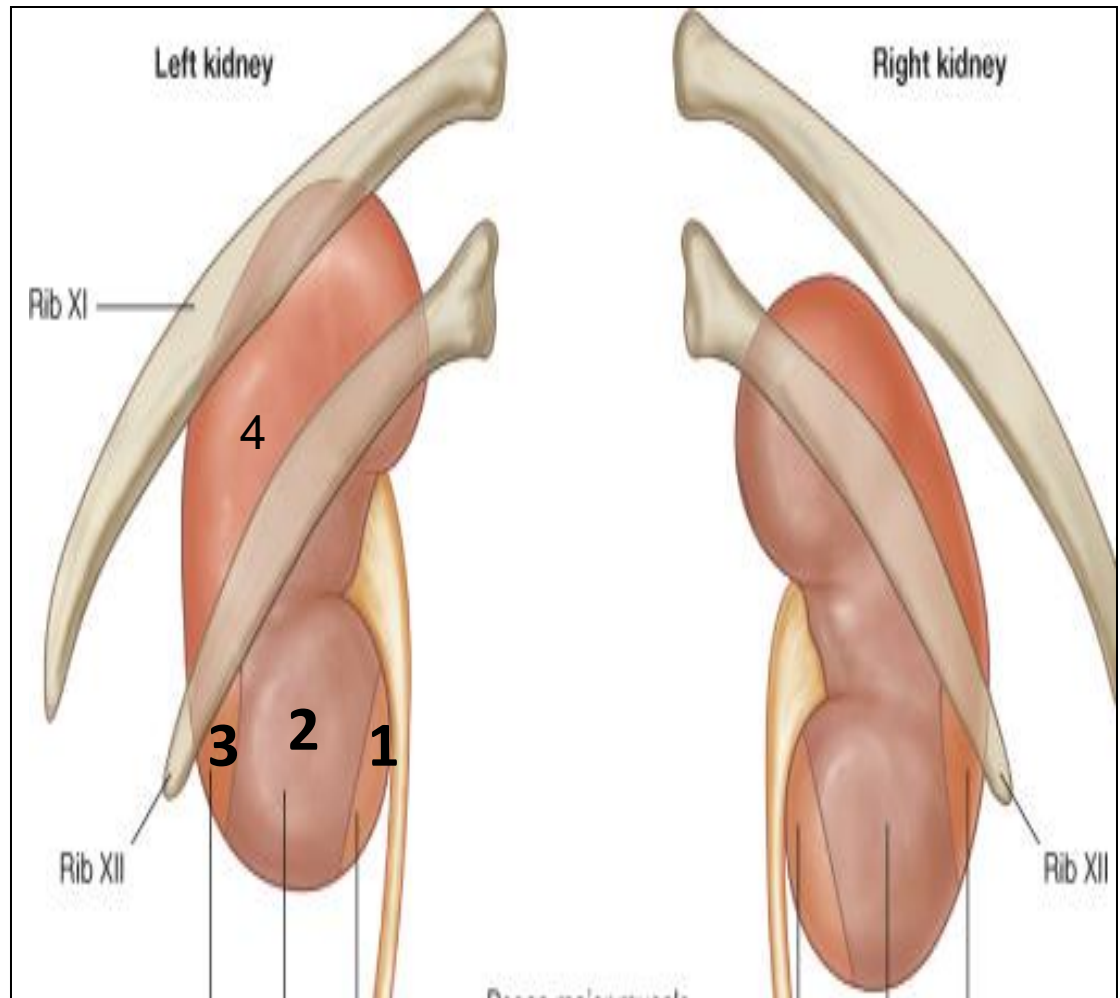
- Identify the structures related to the marked areas:
- 1- right loop Liver
- 2- 2<sup>nd</sup> part of Duodenum
- 3- Right Colic Flexure
- 4- coils of jejunum (small intestine).

(Right kidney)



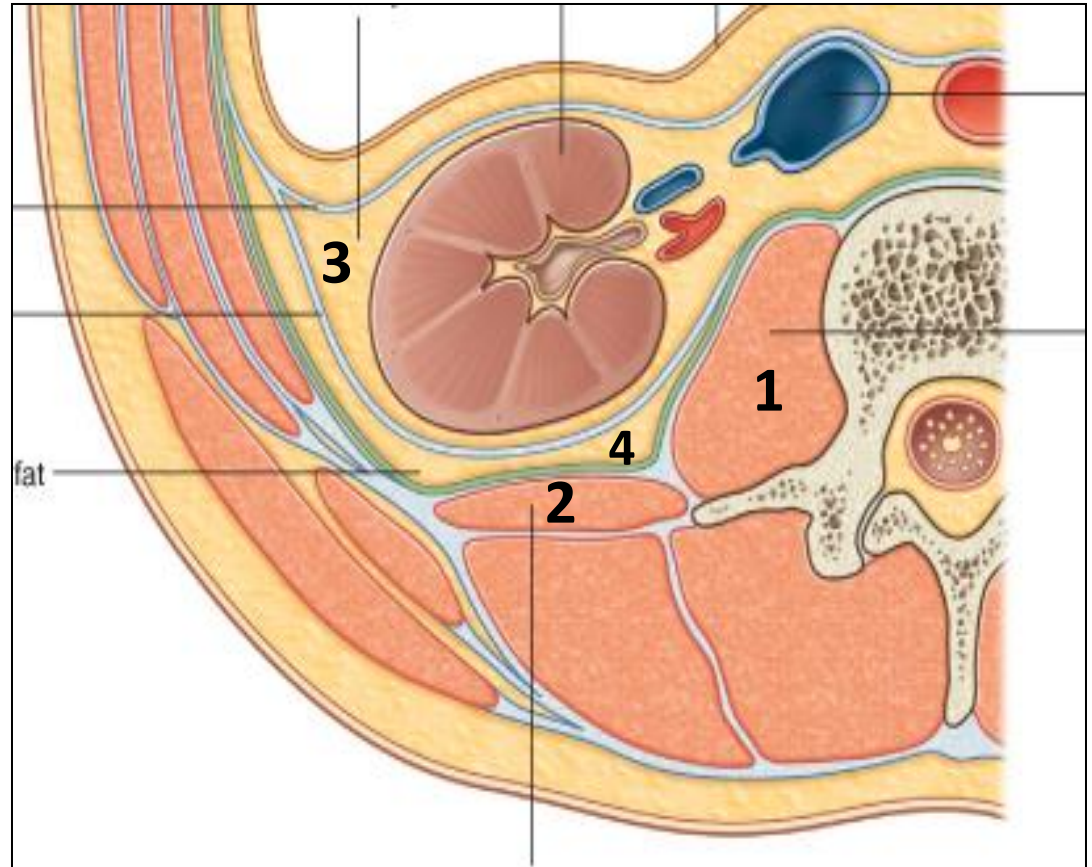
# Q 6

- Identify the structures related to the marked areas:
- (muscle of the back)
- 1- Psaos Major
- 2- Quadratus Lumborum
- 3- Transverse Abdomins
- 4-last intercostal space or diaphragm



# Q7

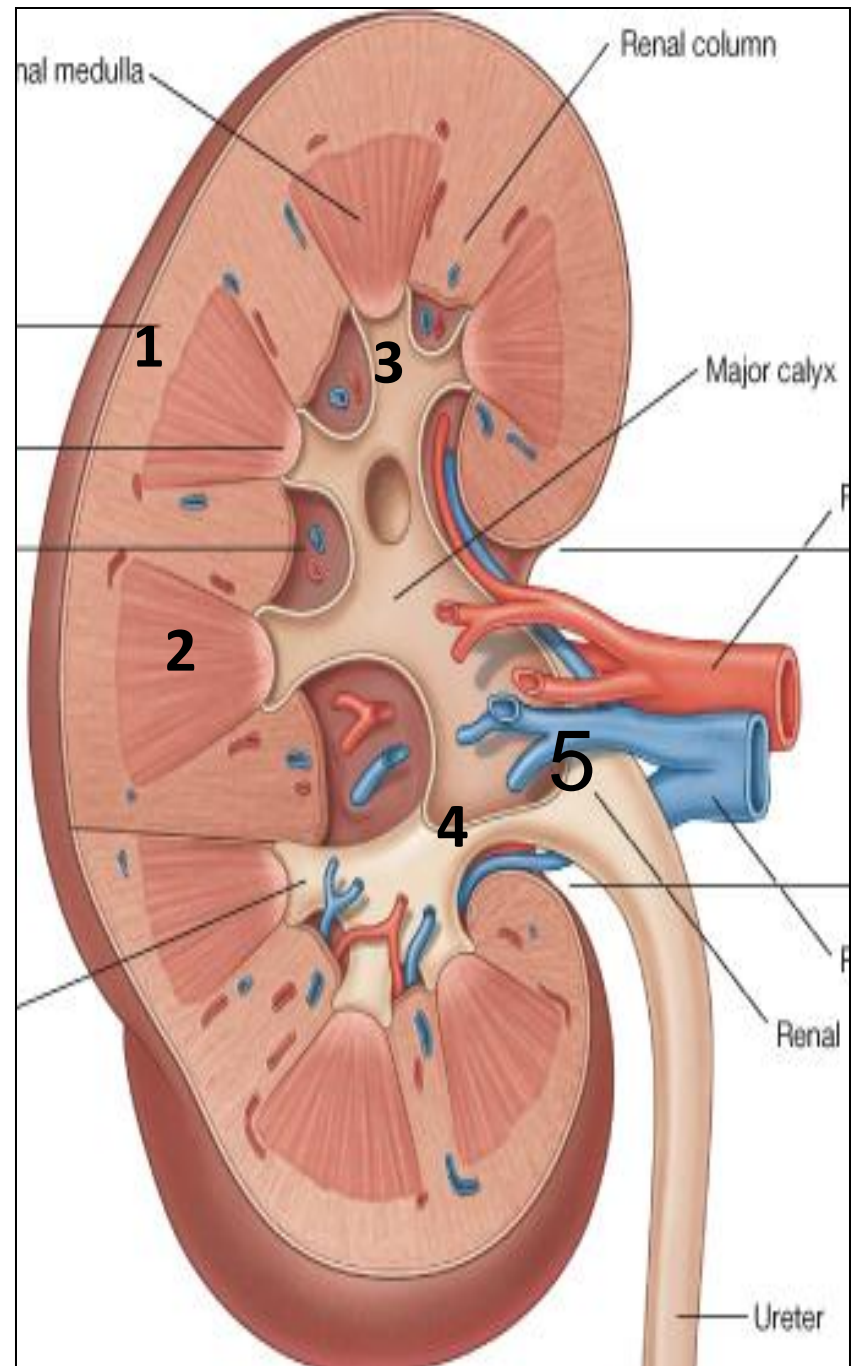
- Identify the structures:
- 1- Psoas Major.
- 2- Quadratus Lumborum.
- 3- Perirenal fat.
- 4- Pararenal Fat.





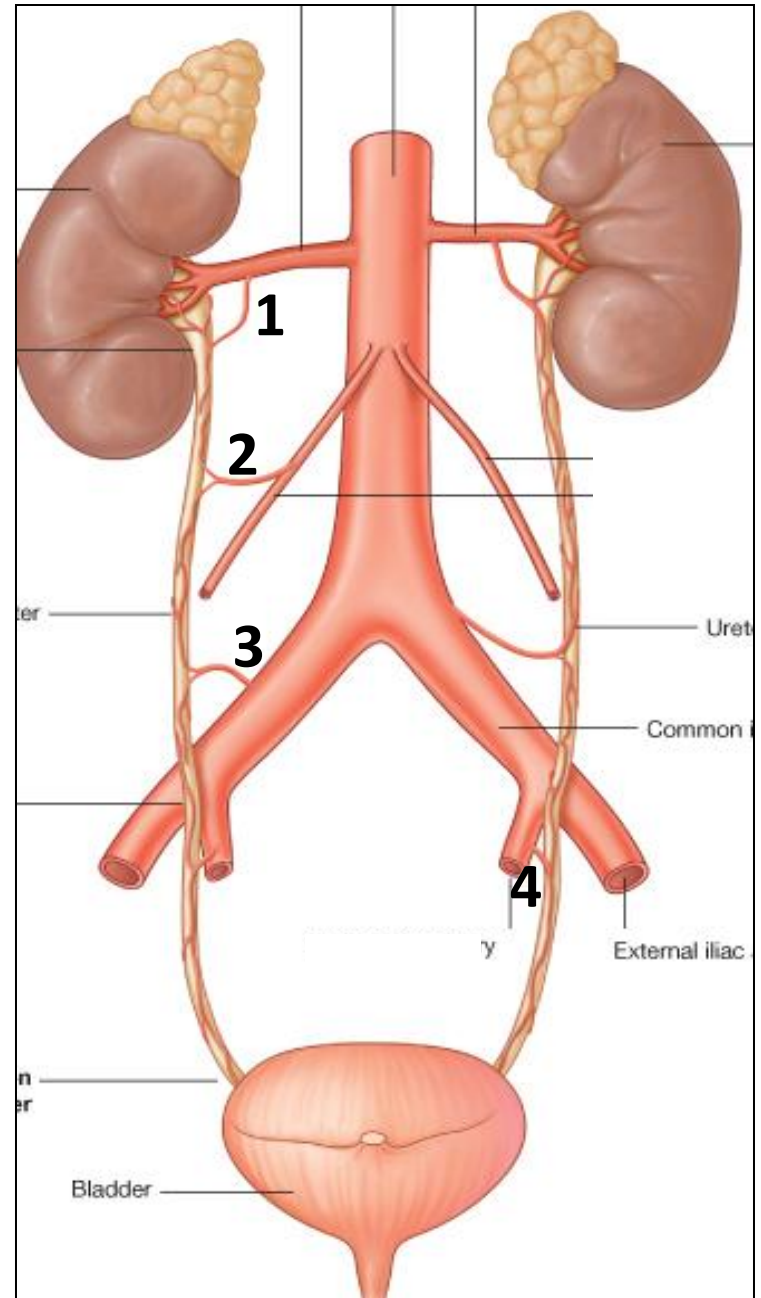
# Q 8

- Identify the marked areas:
- 1- Cortex
- 2- Renal Pyramid
- 3- Minor Calyx
- 4- Major Calyx
- 5- renal pelvis.



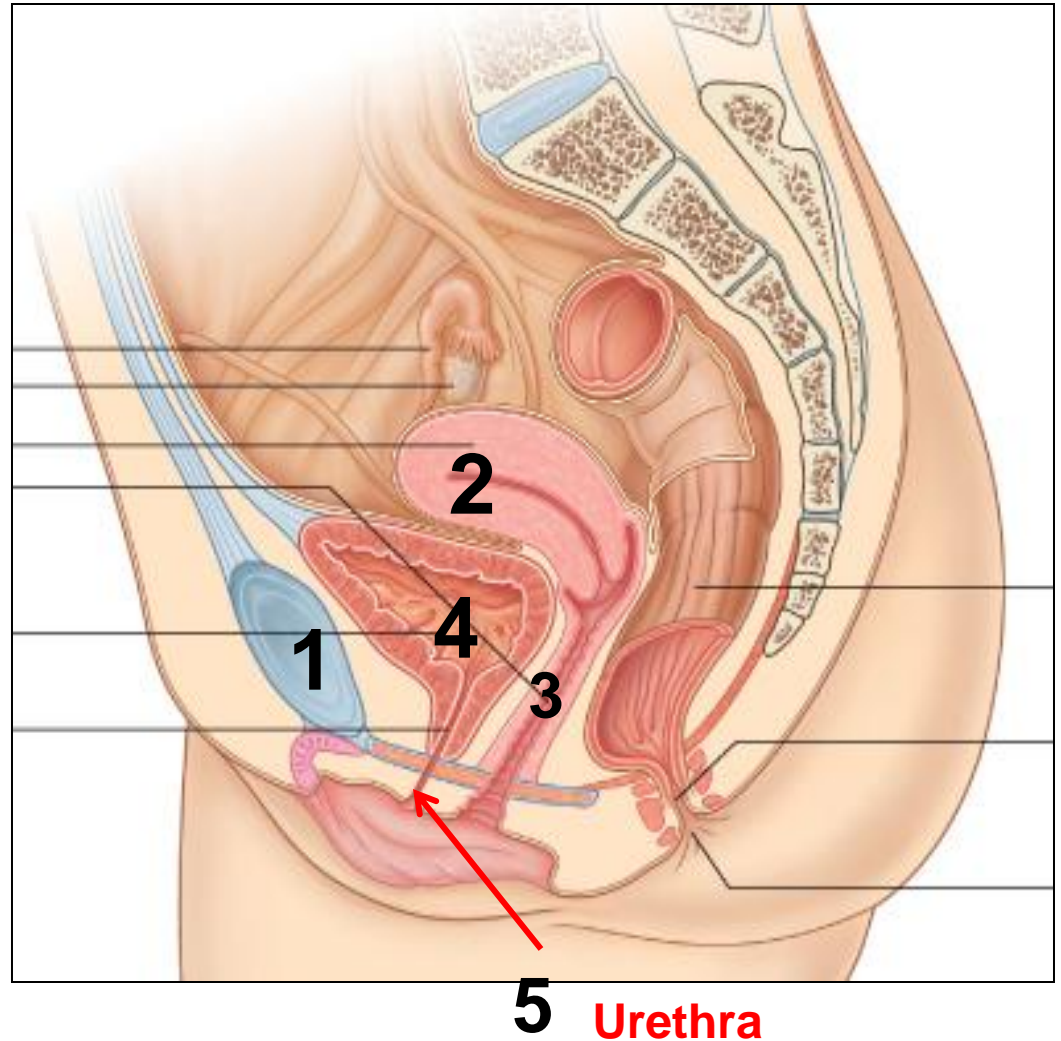
# Q 9

- The ureter is supplied by:
- 1- Renal Artery
- 2- Gonadal Artery
- 3- Common iliac Artery
- 4- Internal iliac Artery



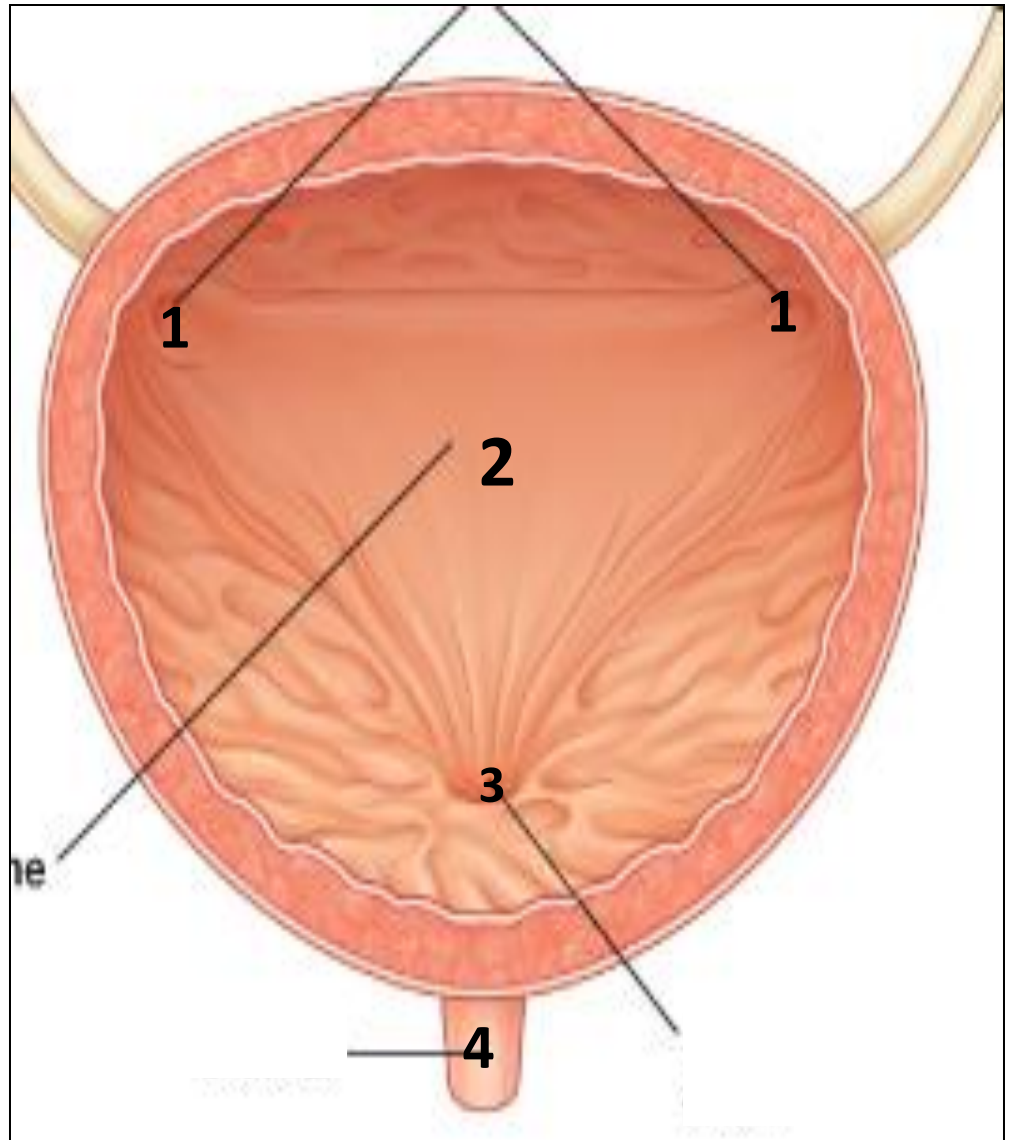
# Q 10

- Relation of the bladder (4) ;
- Anterior surface :-
- 1- Symphysis pubis.
- Superior surface :-
- 2-Uterus
- Posterior surface :-
- 3-Vagina



# Q 11

- **Identify the labeled areas:**
- **1-** Ureteric Orifices
- **2-** Trigone
- **3-** Internal Urethral Orifice
- **4-** Urethra





# Q 12

- Prostatic part of the male urethra and it's the most dilatable part .

