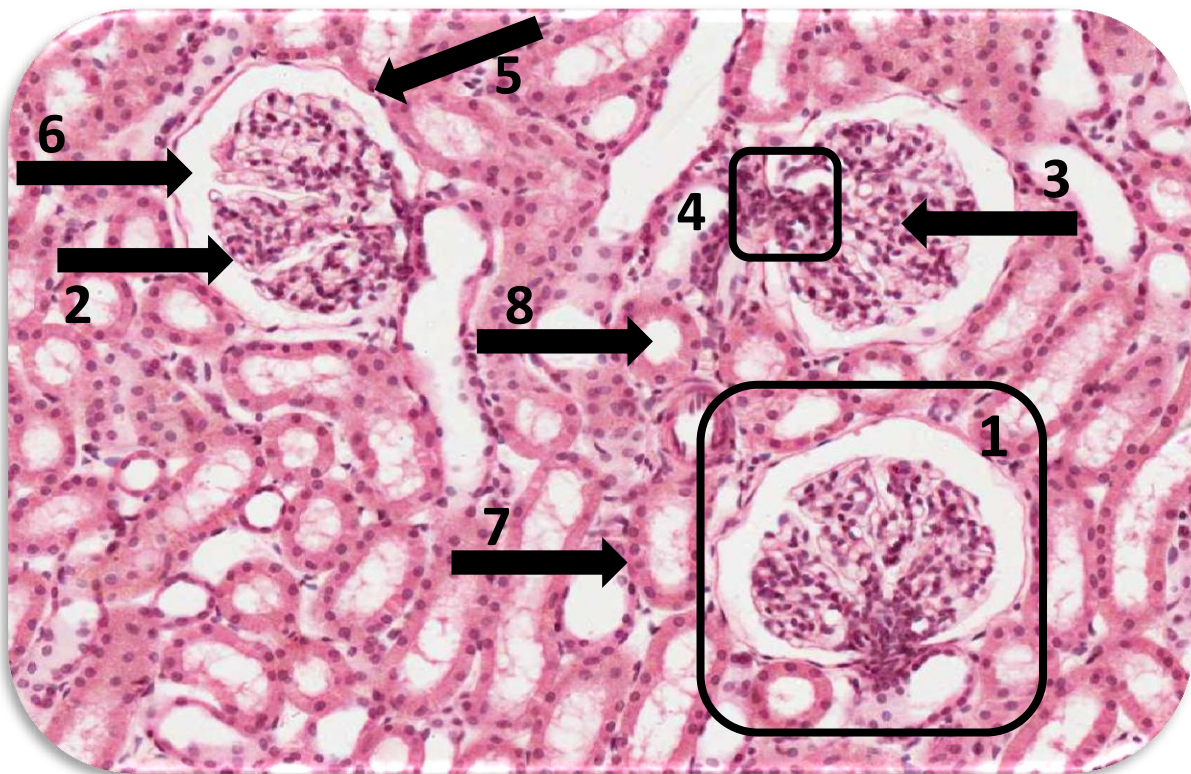


Histology of Renal Block



Done by 430 Histology team :

RAWAN AL-SULTAN WAAD AL-WGAIT



Identify: Renal cortex

1-Renal corpuscle (consists of two structures: a glomerulus and a Bowman's capsule)

2-visceral layer or podocytes

3-Glomerulus

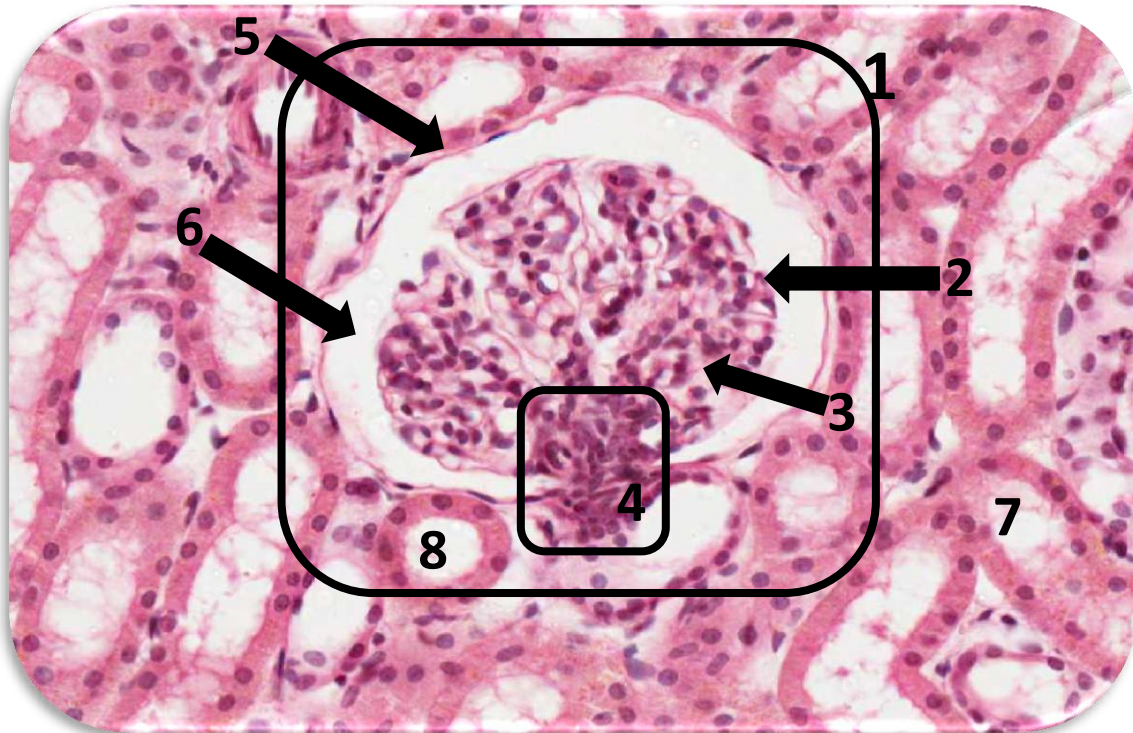
4-Juxtaglomerular apparatus

5- Parietal layer of Bowman's capsule

6-Renal space

7-Proximal convoluted tubule

8-Distal convoluted tubule



Identify: Renal cortex

1-Renal corpuscle (consists of two structures: a glomerulus and a Bowman's capsule)

2-visceral layer or podocytes

3-Glomerulus

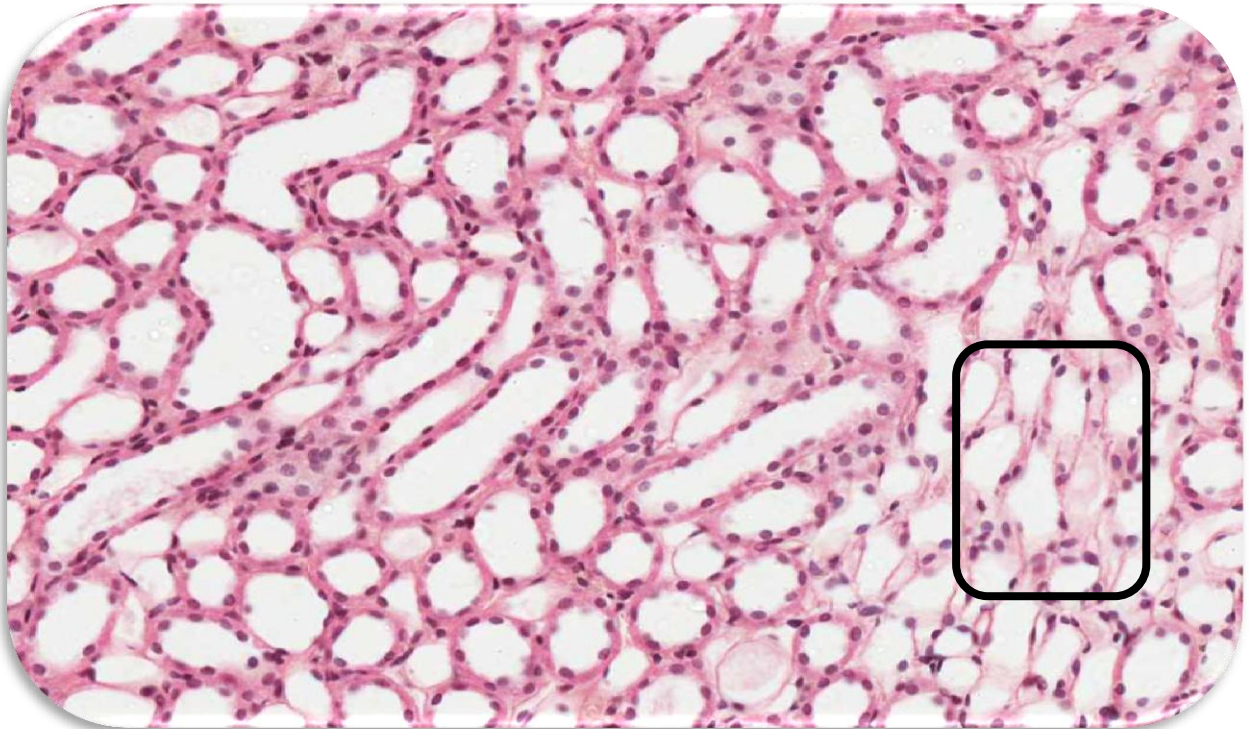
4-Juxtaglomerular apparatus

5- Parietal layer of Bowman's capsule

6-Renal space

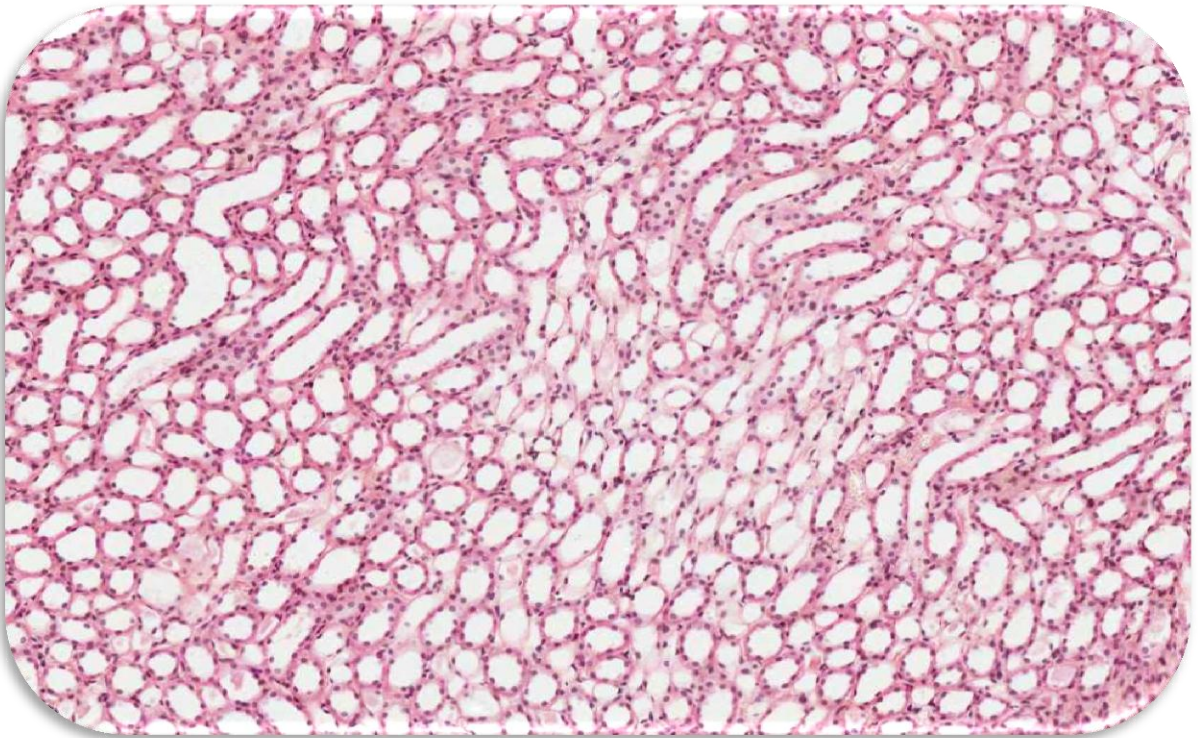
7-Proximal convoluted tubule

8-Distal convoluted tubule

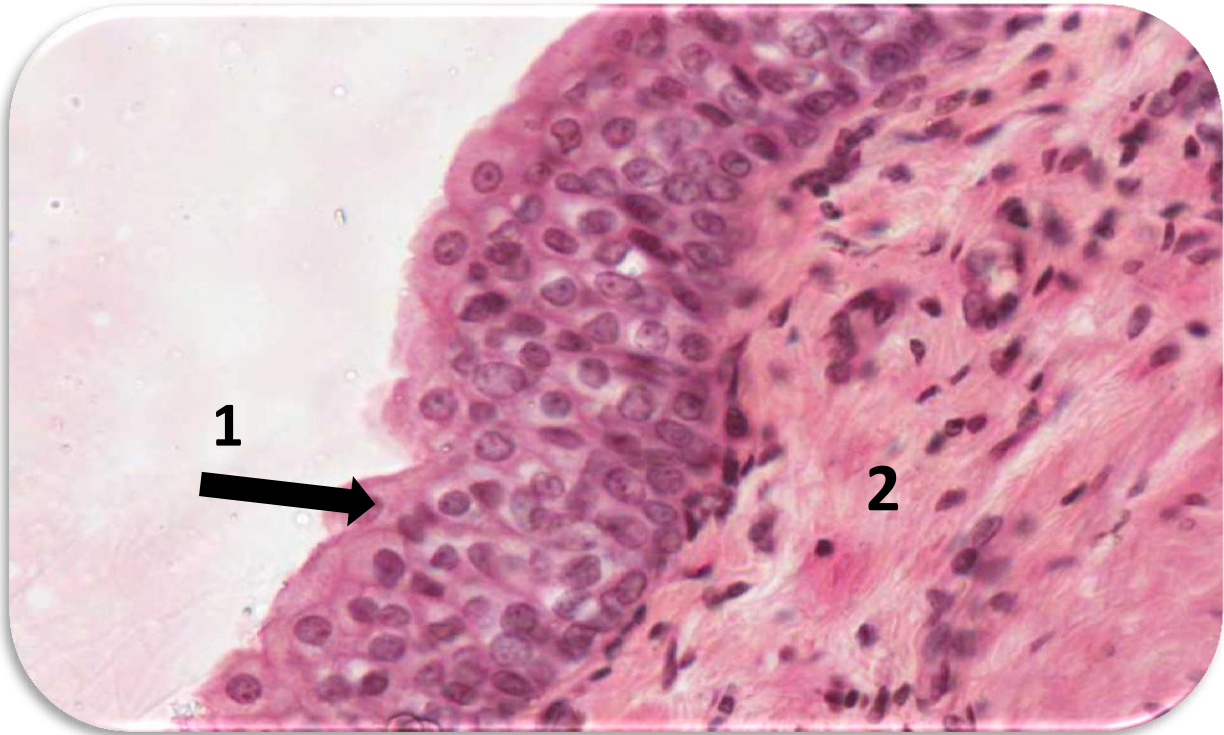


Identify: Renal medulla

1- limbs of Henle's loop



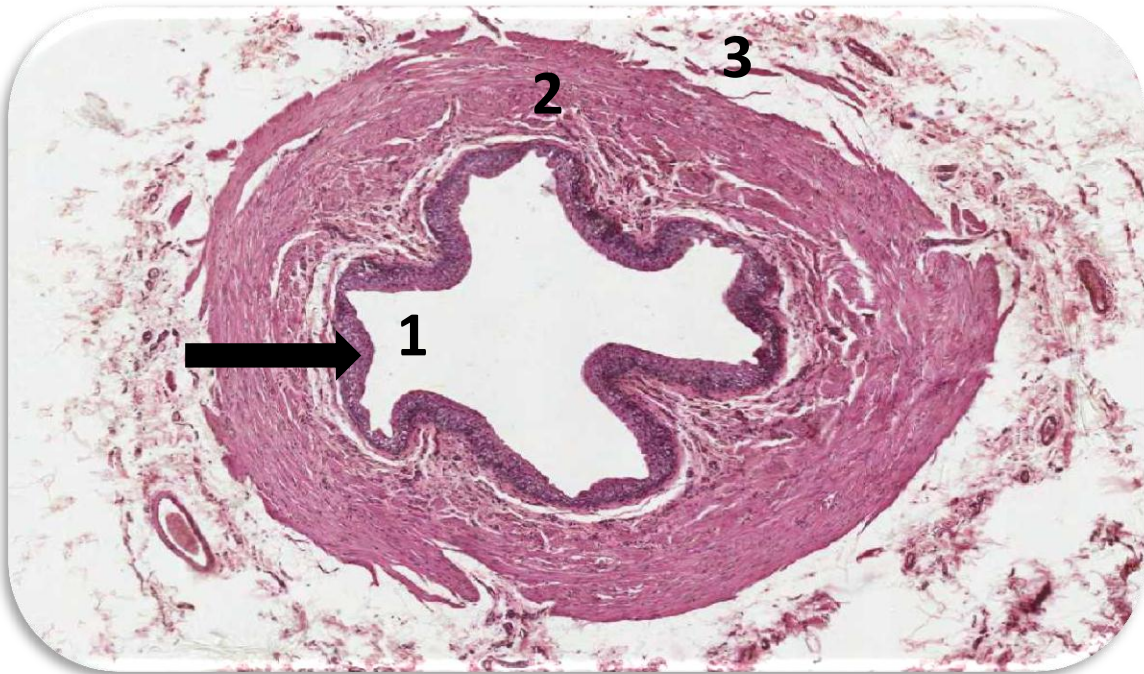
Identify: Renal medulla



Identify: Ureter

1-transitional epithelium

2-lamina propria

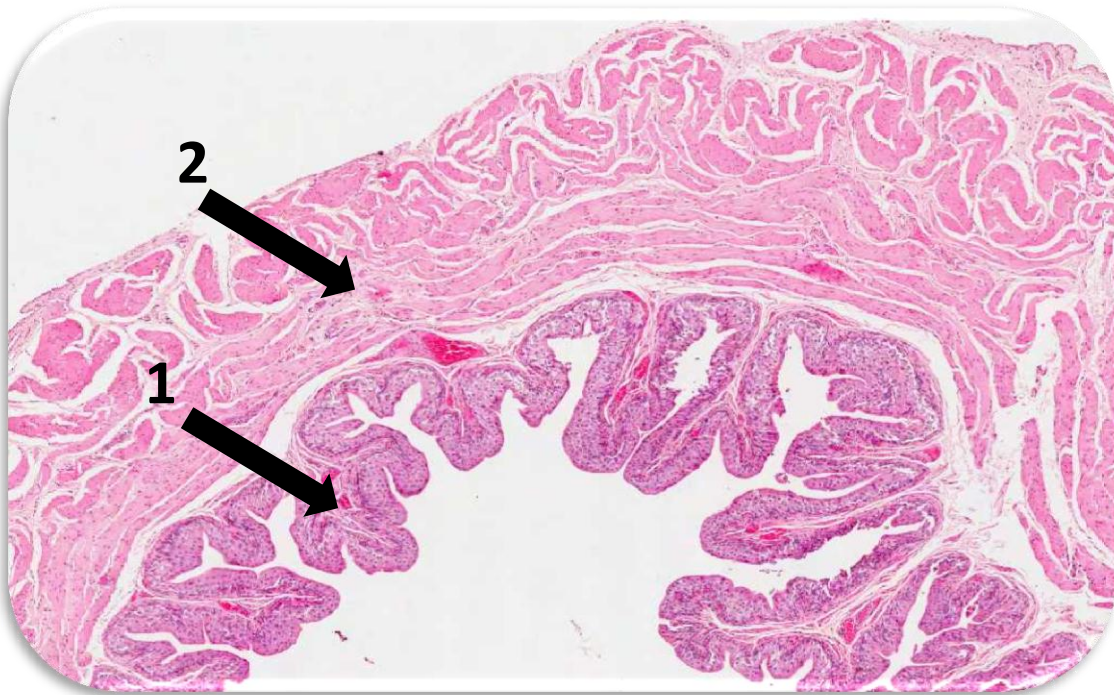


Identify: cross section of the Ureter

1-mucosa

2- Muscularis (muscular coat)

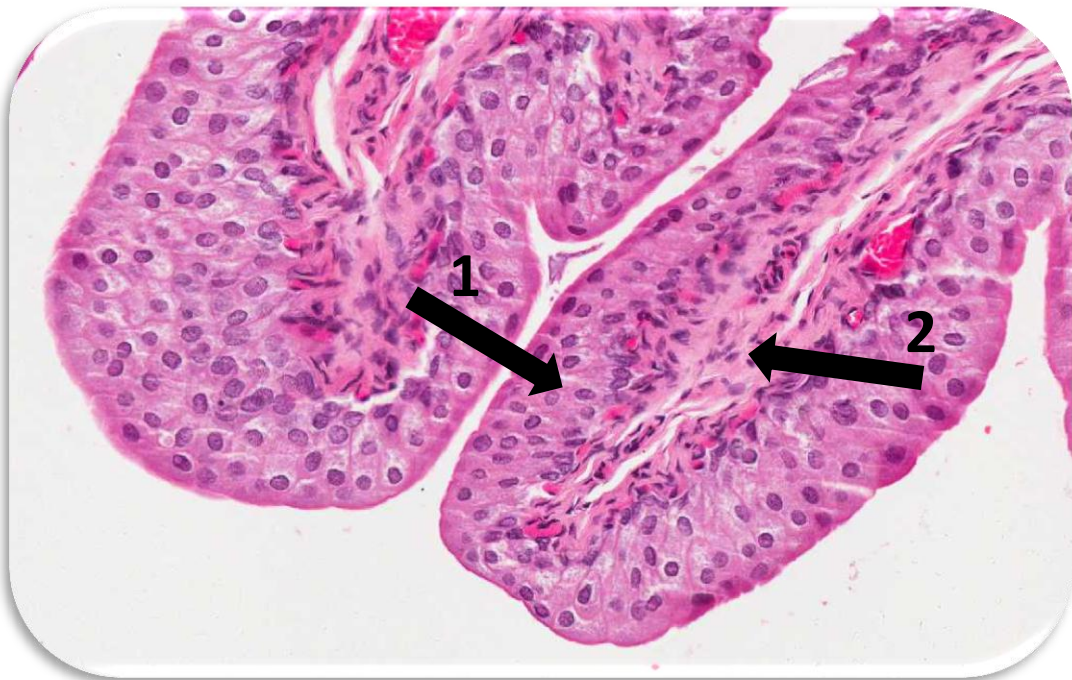
3- Adventitia



Identify: Urinary bladder

1-transitional epithelium

2-lamina propria



Identify: Urinary bladder

1-transitional epithelium

2-lamina propria

POINTS YOU SHOULD KNOW

* The lining of each structure:

Proximal convoluted tubule → simple cuboidal epithelium

Henle's loop → simple squamous epithelium

Distal convoluted tubule → low cuboidal epithelium

Collecting tubules → simple cuboidal epithelium

1-Cortical: simple Cuboidal Epithelium

2-Medullary: simple Cuboidal Epithelium

3-Papillary ducts (ducts of Bellini): Simple Columnar Epithelium

Urinary bladder → transitional epithelium

Ureter → transitional epithelium

Juxtaglomerular apparatus:

A-The macula densa

B-Juxtaglomerular cells → secrete renin → activate angiotensin

C-The extraglomerular mesangial cells

the layers of each structure :

ureter	Urinary bladder
1. Mucosa: (transitional epith. and lamina propria) 2. Muscularis (muscular coat): (2 layers of smooth muscle in the upper 2/3): A- Inner longitudinal. B- Outer circular. (3 layers of smooth muscle in the lower 1/3): A- Inner longitudinal . B- Middle circular. C- Outer longitudinal. 3. Adventitia: fibrous CT	1.Mucosa: (transitional epith. and lamina propria) 2.Muscularis (muscular coat): A- Inner longitudinal . B- Middle circular. C- Outer longitudinal. 3.Adventitia: or serosa

Approved

By DR. RAESA

Good luck