

Histology Team 431



Leaders

Tamader Aloofy

Mohammed Aldaheri

Members

Ibtihal Al-Amer

Abdullah Baqays

Raghda Al Amri

Nasser Alsaleh

Walaa Al Shehri

Mosaed Aldekhayel

Abeer Al-Suwailem

Kidney



1- Glomerulus.

2- Urinary space

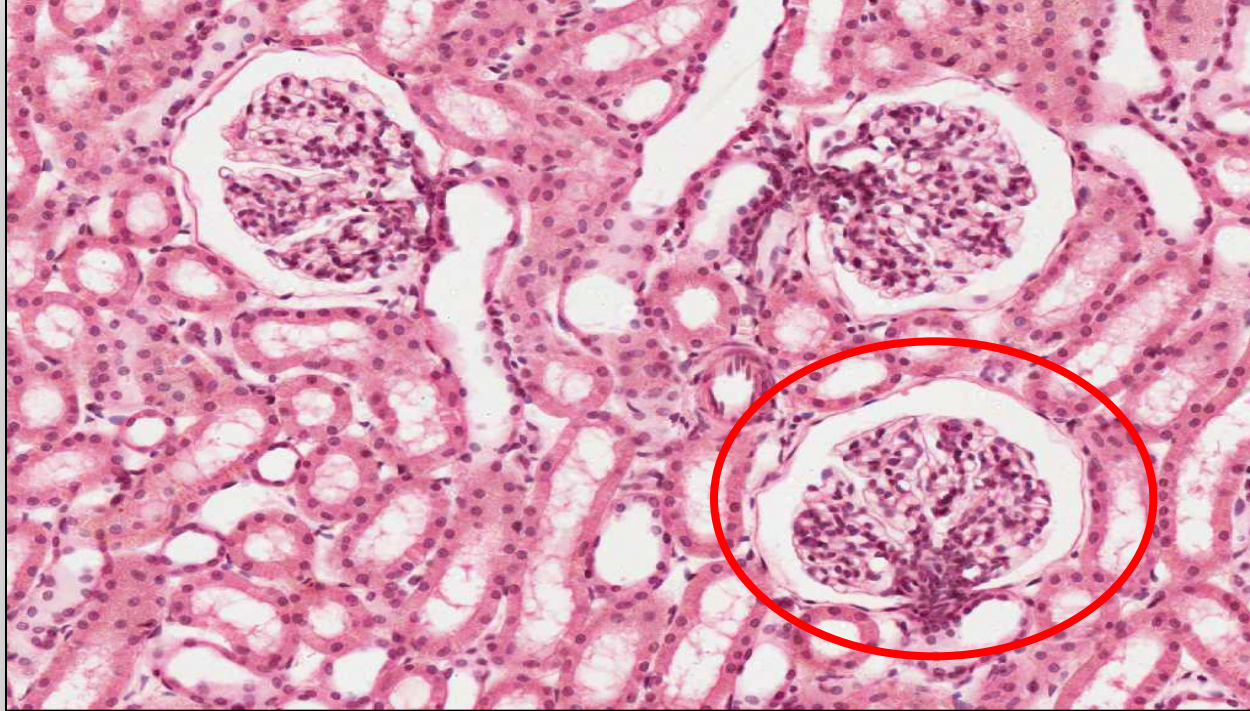
3- Parietal layer

4- Proximal convoluted tubule with brush border

5- Distal convoluted tubule

6- Juxta-medullary apparatus.

Kidney



- Renal corpuscle

-Components:

1- Glomerulus

2- Bowmans capsule

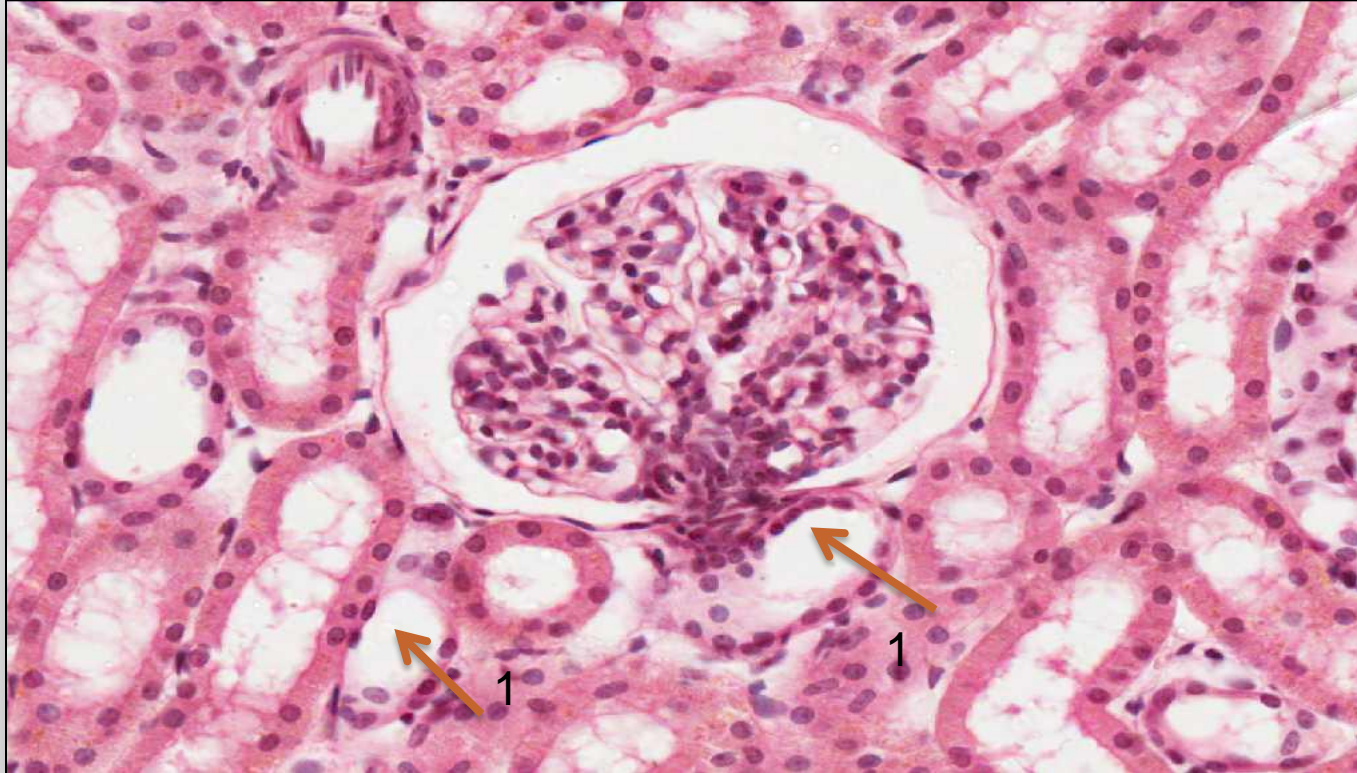
3- Mesengium

4- Podocyte.

Kidney

1-Distal convoluted tubules.

Any other structure other than that **labeled** and the renal corpuscle will be Proximal convoluted tubules (with brush boarder).





Ureter (lower 1/3)

* Lining epithelium :
Transitional epithelium

*Layer:

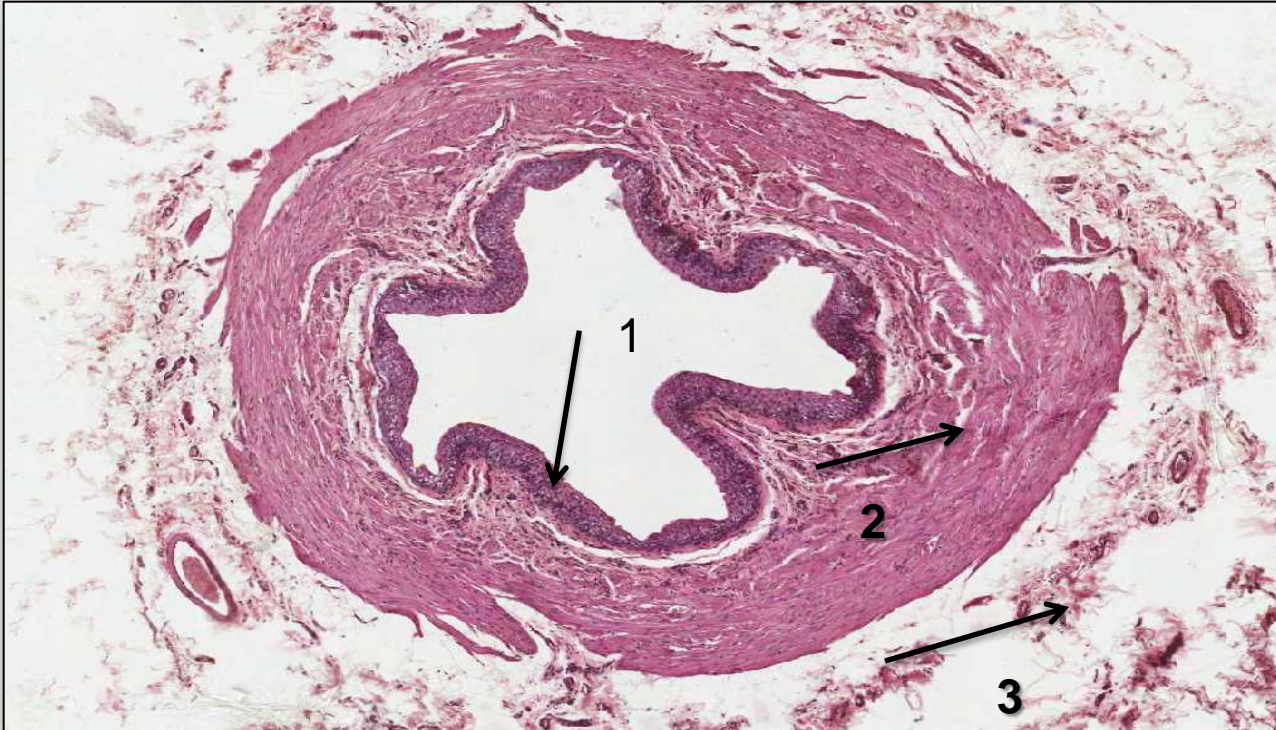
1- mucosa :

- epithelium
- lamina propria

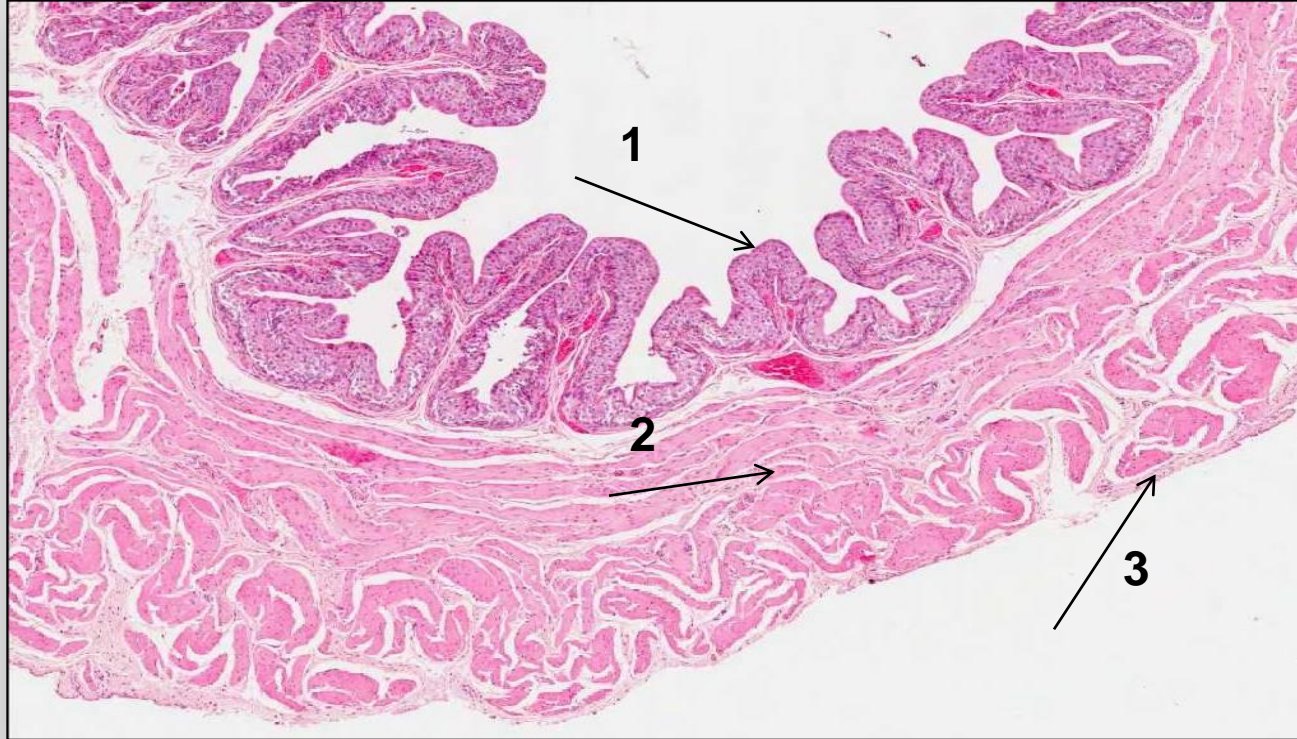
2- muscle coat :

- inner longitudinal
- middle circular
- outer longitudinal

3- Adventitia



Urinary Bladder



***Lining epithelium:**
Transitional epithelium

***Layers:**

1- mucosa :

- epithelium
- lamina propria

2- muscle coat :

- inner longitudinal
- middle circular
- outer longitudinal

3- Serosa

Lining of the structures:

Proximal convoluted tubule: simple cuboidal epithelium

Henle's loop: simple squamous epithelium

Distal convoluted tubule: simple cuboidal epithelium

Collecting tubules: simple cuboidal epithelium