



King Saud University
College of Medicine
Foundation Block



Histology Lecture (3)

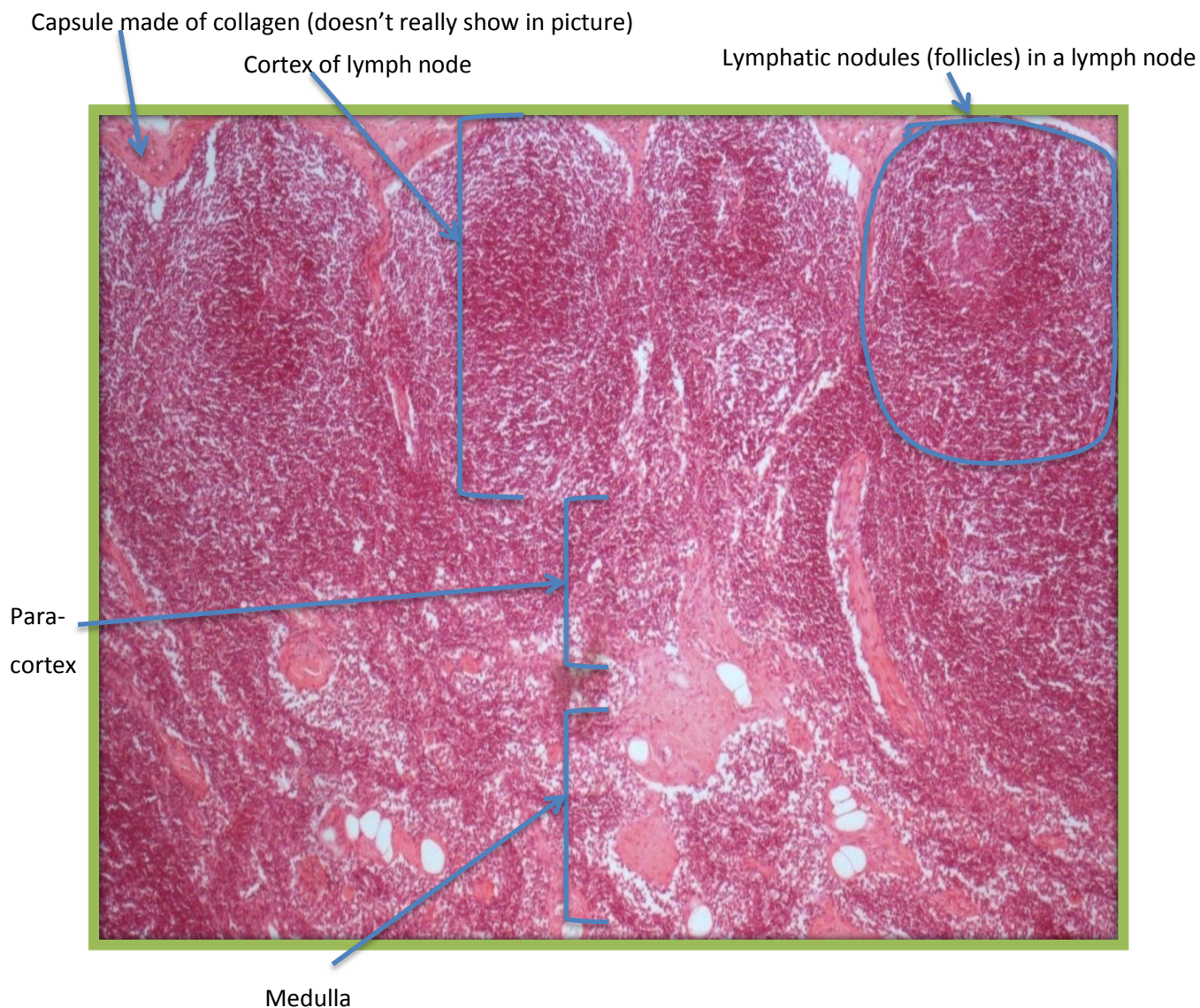
Lymphoid Tissue

Histology Team 432

Histology Practical



LYMPH NODE



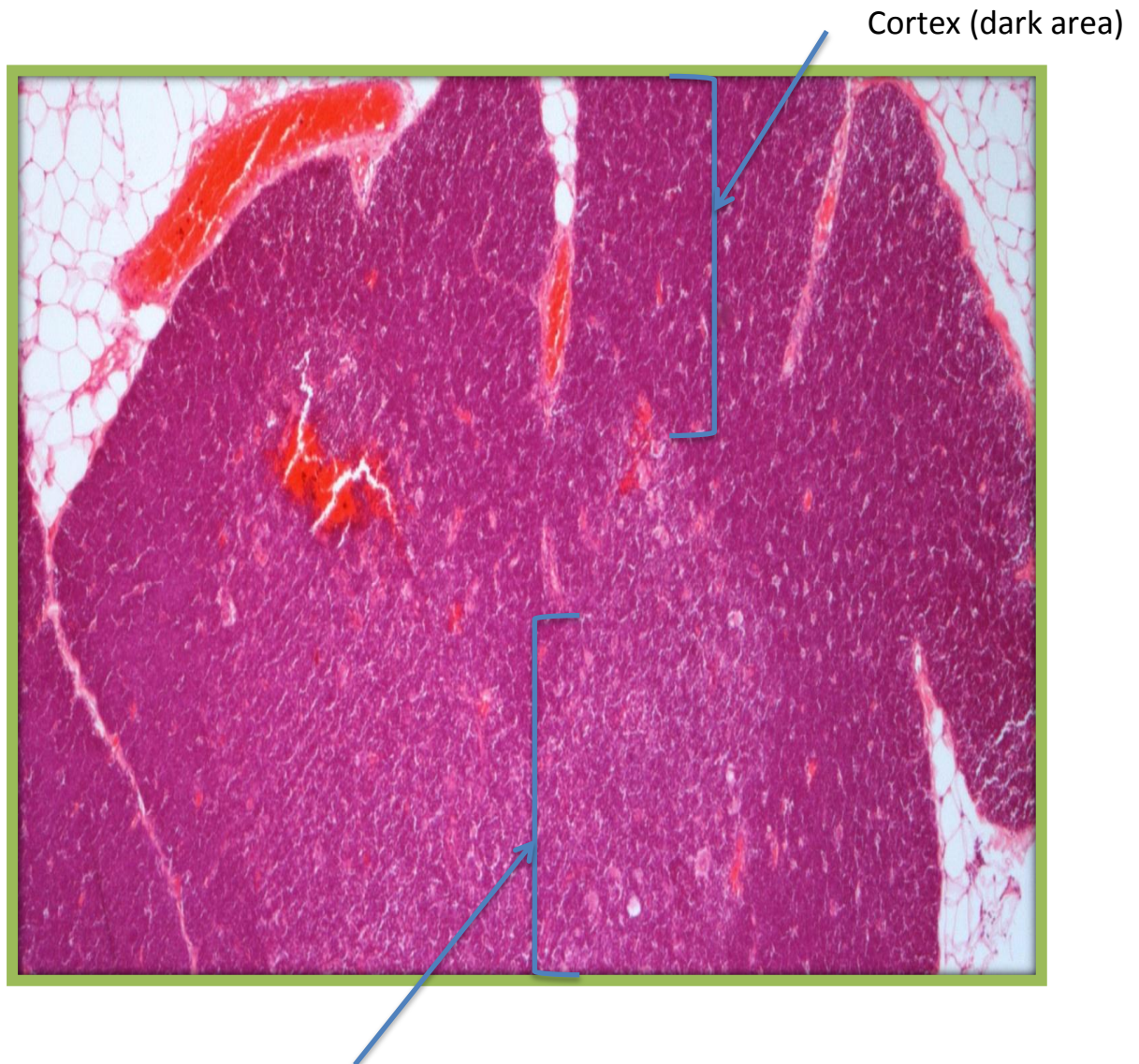
Lymph node parenchyma divided into:

- Cortex
- Para-cortex
- Medulla

Main Characteristics:

- Cortex: Lymphatic nodules (Lymph follicles)

THYMIC LOBULE



Medulla (light area)

Main Cells in Thymic Lobule:

- T-lymphocytes
- Epithelial reticular cells
- Macrophages

Main Feature:

- Hassall's Corpuscle in medulla
- Does not contain lymphatic nodules