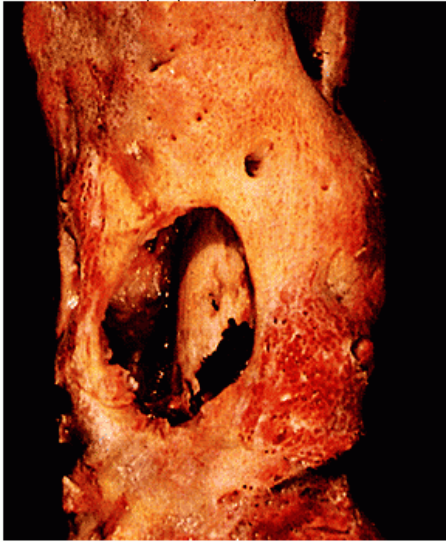


Osteomyelitis

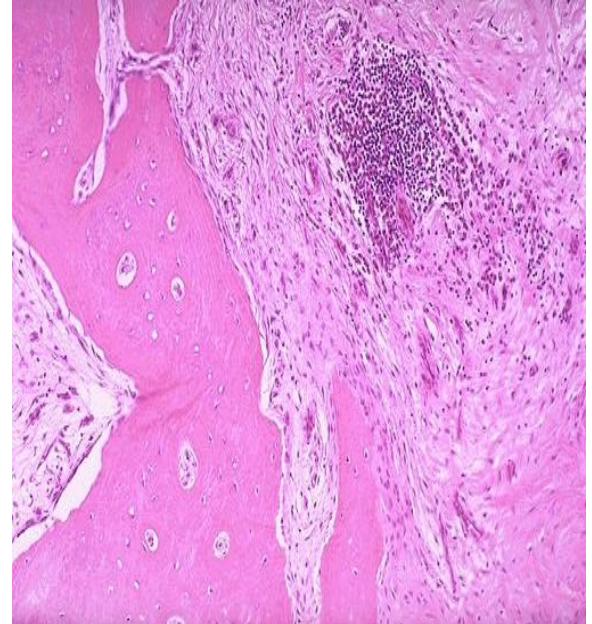
Figure 27.19

Resected femur in patient with draining osteomyelitis. The drainage tract in the subperiosteal shell of viable new bone (involucrum) reveals the inner native necrotic cortex (sequestrum).



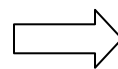
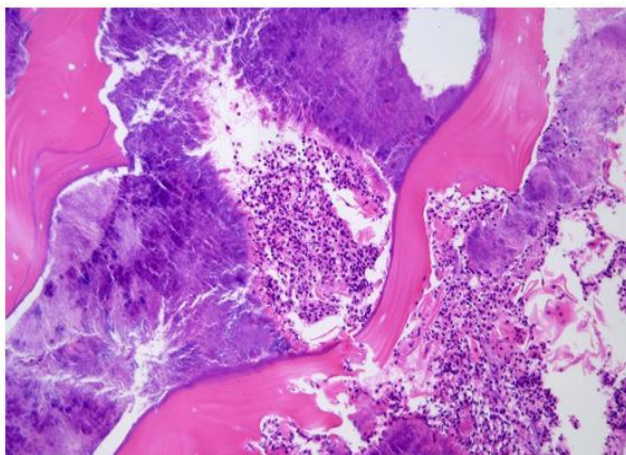
Gross section :

- A. Involucrum : formation of new bone .
- B. Sequestrum : necrotic died cortical bone .



Histological section :

- A. Inflammatory cells , plasma cells .
- B. Fibrosis .
- C. Died trabeculae bone .
- D. Some new bone formation .

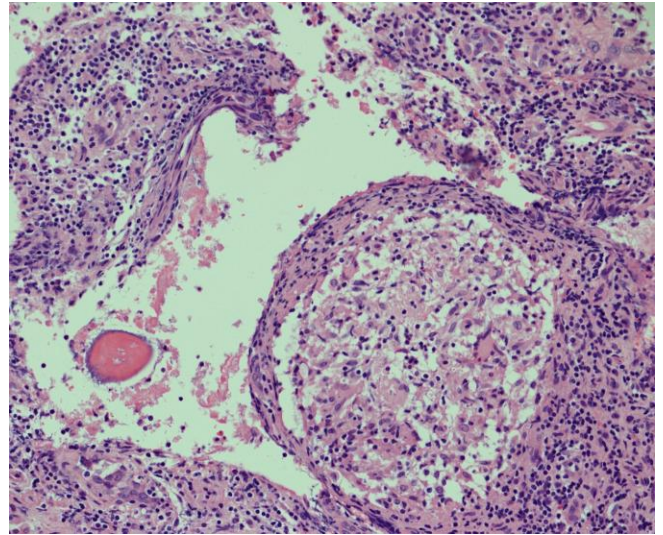


Bony sequestrae are surrounded by colonies of bacteria as well as purulent infiltrate.

Note : causes of Osteomyelitis

- Haematogenous spread
- Direct access via a penetrating injury.
- Direct spread from a neighbouring infected site

Spinal TB - Potts Disease (Tuberculous osteomyelitis)



Gross :

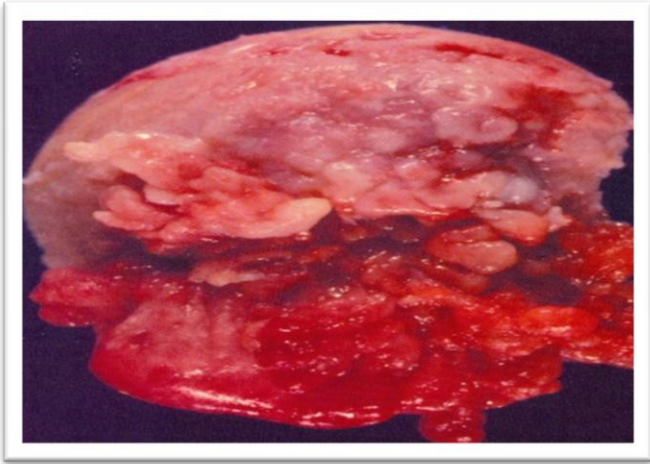
- A. Deformity of the (vertebra) bone
- B. White and necrotic area .

Histological section :

Granuloma formation :

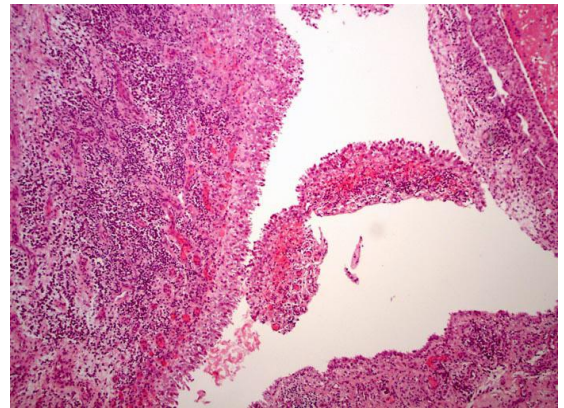
- A. epithelioid like cells .
- B. Langhans giant cell (horse show like) .
- C. Caseous necrosis .
- D. Rim of lymphocytes .

Rheumatoid arthritis non – infection auto-immune disease



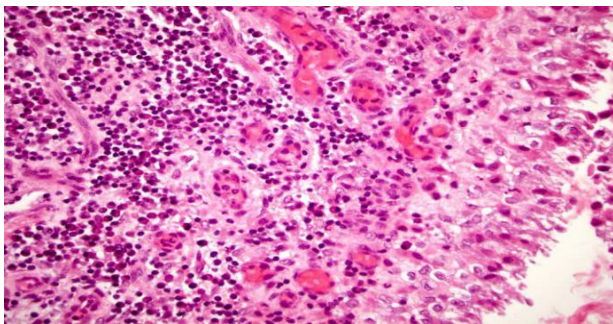
Gross section :

- A. The synovium becomes edematous .
- B. Thickened and hyperplastic and transforming its smooth contour to one covered by delicate and bulbous fronds .



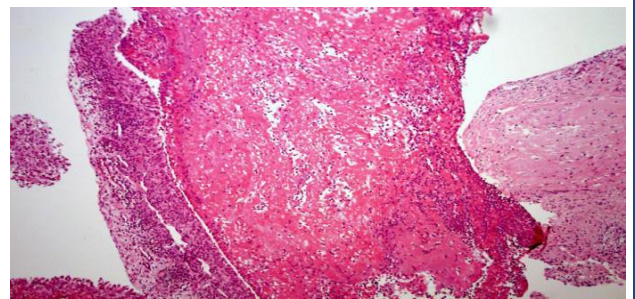
Histological section :

- A. hyperplastic synovial lining with villous like projections .
- B. underlying dense lymphocytic infiltration and vascular congestion .



Histological section :

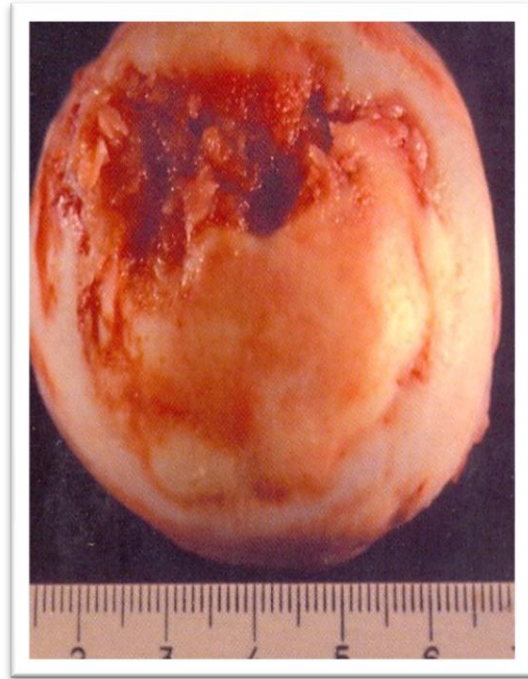
- A. hyperplastic synovium .
- B. underlying plasma cells and lymphocytes including many congested blood vessels .



Histological :

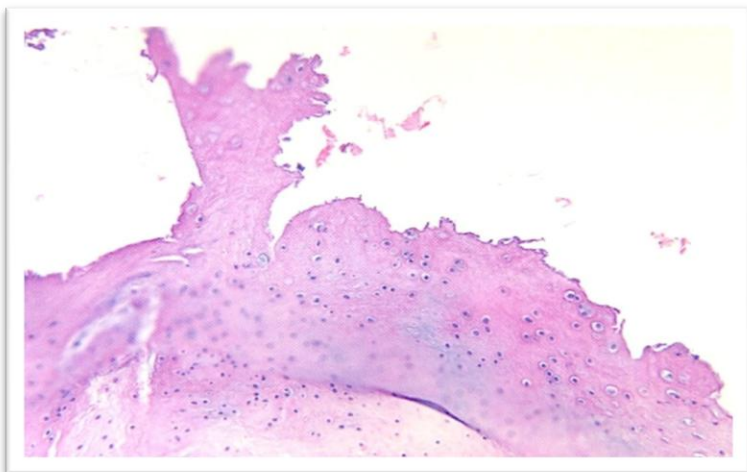
a pannus consisting of fibrinous inflammatory exudates with underlying markedly inflamed synovium , later on , calcification and causes permanent ankylosis

Osteoarthritis



Gross section :

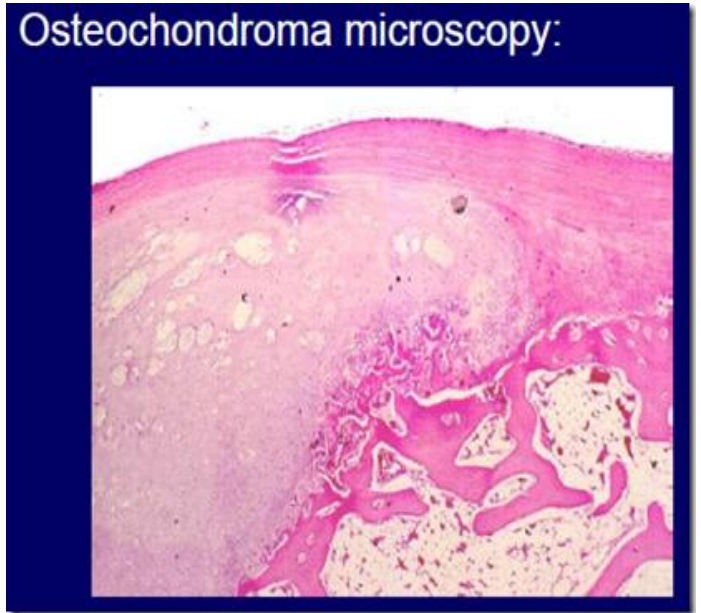
- A. Erosion of articular cartilage .
- B. Eburnated articular surface .
- C. Some time Formation of subchondral cyst .



Histological Section :

Mushroom-shaped osteophytes (bony outgrowths) develop at the margins of the articular surface and Note the absence of inflammation .

Osteochondroma (osteochondroma exostosis)



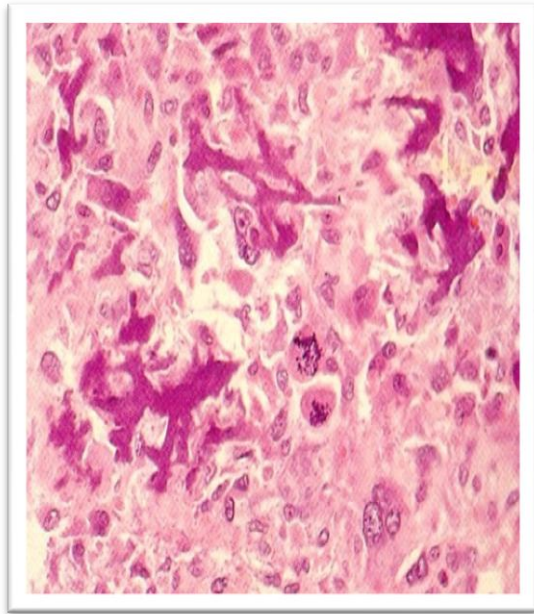
Gross Section :

two osteochondromatous exostosis which are arising from the upper third of fibula .

Histological section :

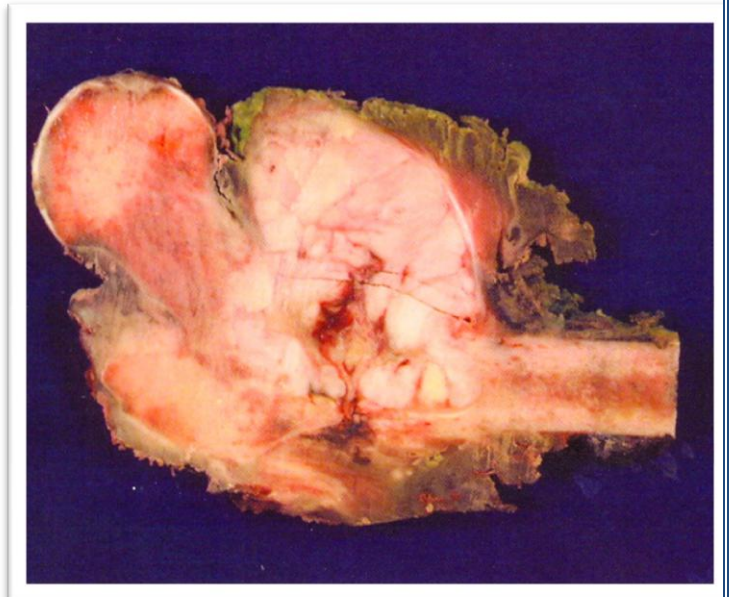
- A. Cartilage cap .
- B. Underlying bone trabeculae .

Osteosarcoma – Malignant tumor



Histological section :

- A. sheet of infiltrated malignance cell with large , polymorphic nuclei that produce osteoid .
- B. Malignance osteoblast
- C. new bone formation in abnormal way
- D. A lot of mitosis

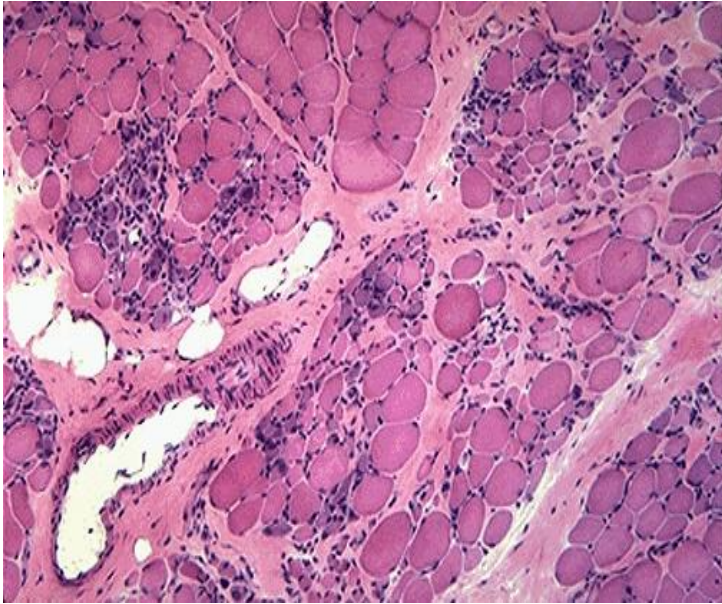


Gross section :

Conventional osteosarcoma

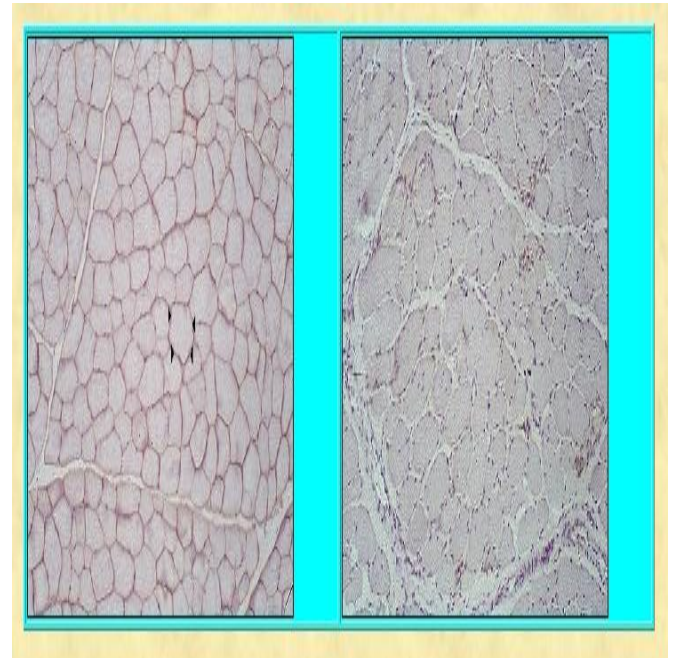
- A. Start from intra-medullar canal .
- B. irregular and infiltration .
- C. necrosis and hemorrhage in the middle .

Duchenne muscular dystrophy



Histological section :

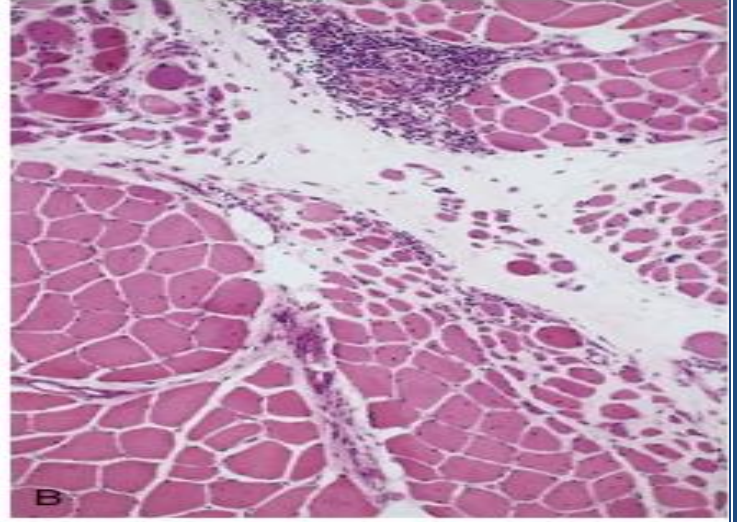
- A. Variation of muscle fiber size .
- B. Increase connective tissue .
- C. Regenerating fibers (blue hue) .



Note Pic in the left normal :

Dystrophin, an intracellular protein, forms an interface between the cytoskeletal proteins and a group of transmembrane proteins

Dermatomyositis



Copyright © 2002, Elsevier Science (USA). All rights reserved.

Histological Section :

The histological appearance of muscle shows perifascicular atrophy of muscle fibers and inflammation .

العمل هذا يعتبر ملخص للسلايدات سمعت التسجيل وكتبت النقاط الي ذكرها الدكتور .. لذلك
لا يعتبر مصدر رئيسي للمذاكرة 😊

ودعواتكم لي بالتوفيق