

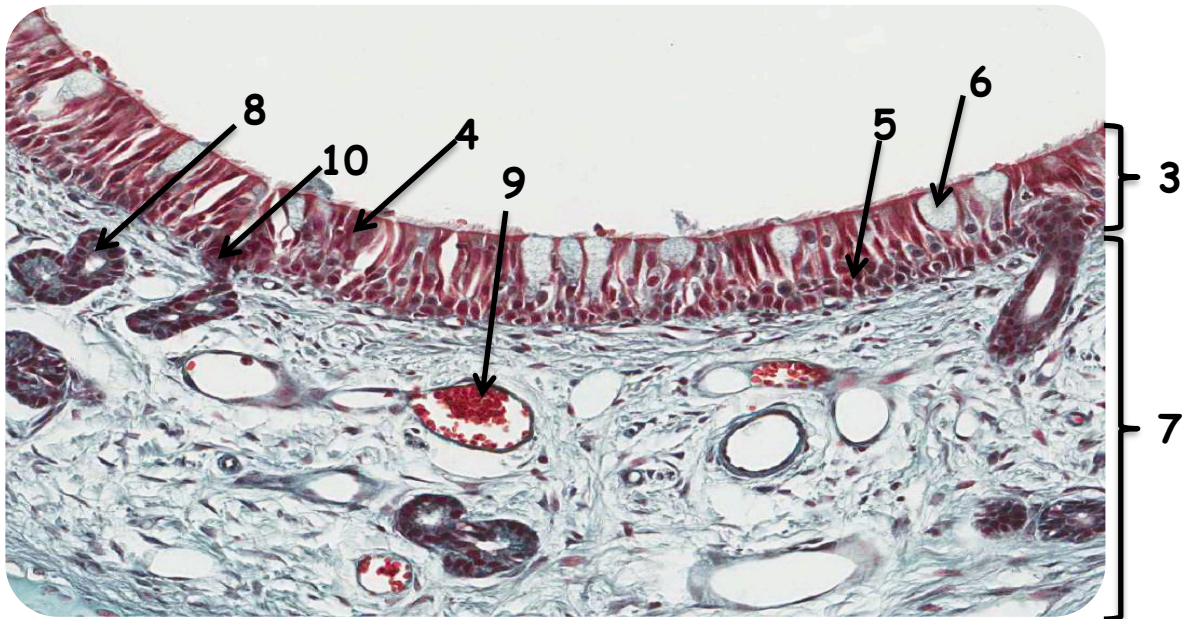
Contents:

- Nasal Cavity
- Respiratory Mucosa
- Trachea
- Lung
- Intrapulmonary Bronchus
- Bronchiole
- Questions

Nasal Cavity



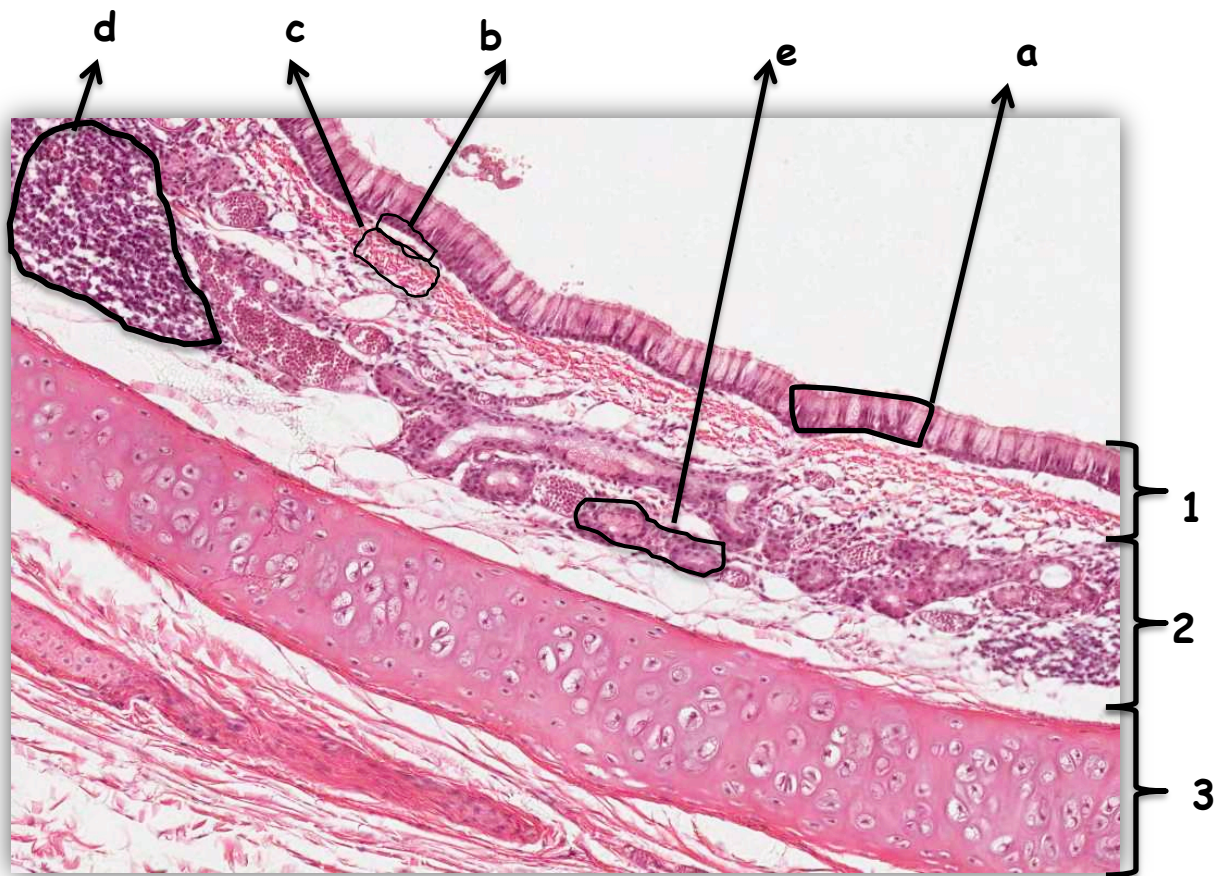
Respiratory Mucosa



Features:

- 1- **Nasal septum**
- 2- Hyaline cartilage
- 3- **Epithelium: Pseudo-stratified ciliated columnar epithelium with goblet cells (Respiratory Mucosa):**
- 4- Ciliated columnar cells
- 5- Basal cells
- 6- Goblet cells
- 7- **Lamina Propria:**
- 8- Seromucous gland
- 9- Blood plexus (the lamina propria is highly vascular)
- 10- Opening duct of seromucous gland

Trachea



Feature :

5- Mucosa :

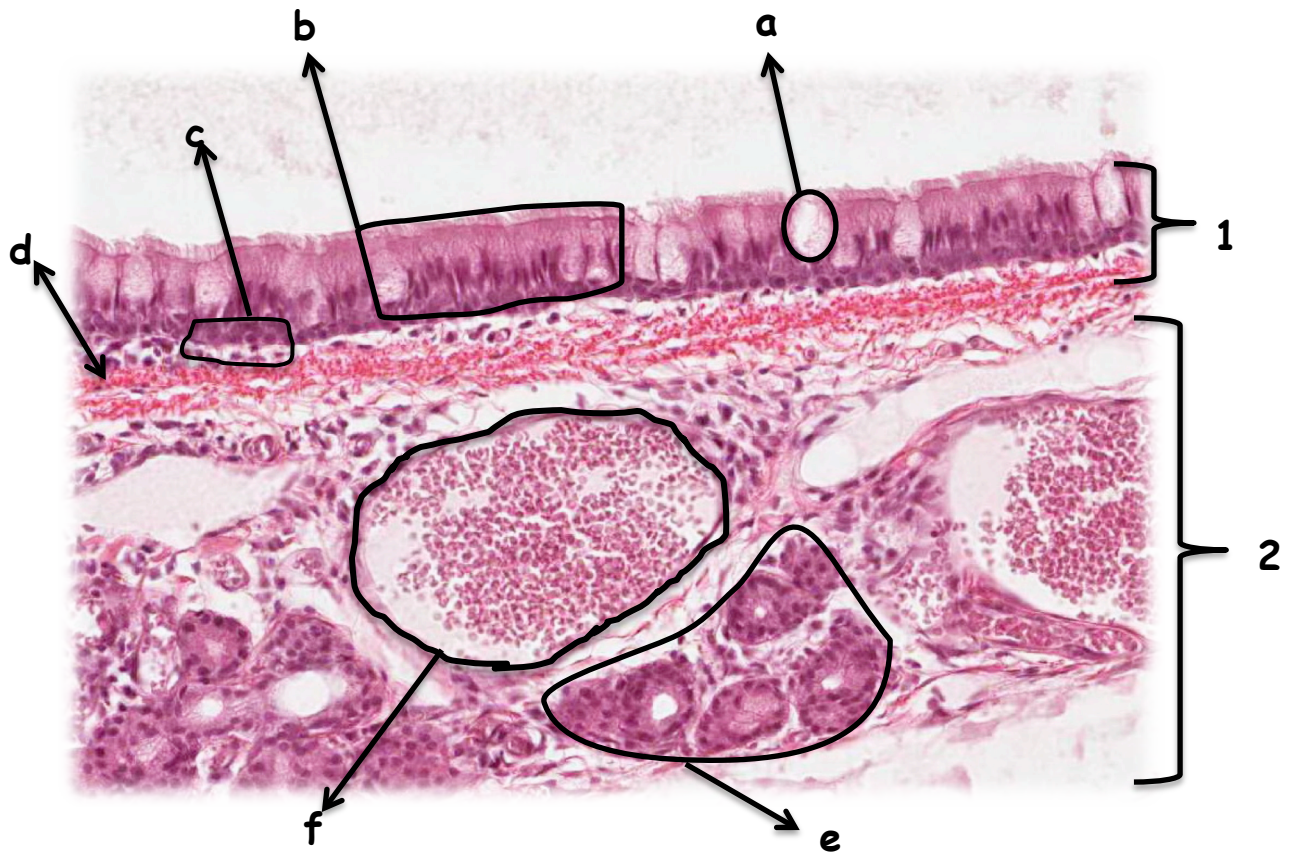
- a. **Respiratory epithelium** , (Pseudo-stratified ciliated columnar epithelium with goblet cells) .
- b. **Lamina propria** .
- c. **Elastic lamina** (it separates the lamina propria from the submucosa)

6- Submucosa : Connective tissue contains

- d. lymphoid elements
- e. Trachealis glands (seromucous glands)

7- Tracheal cartilage (Hyaline Cartilage)

Trachea



Feature :

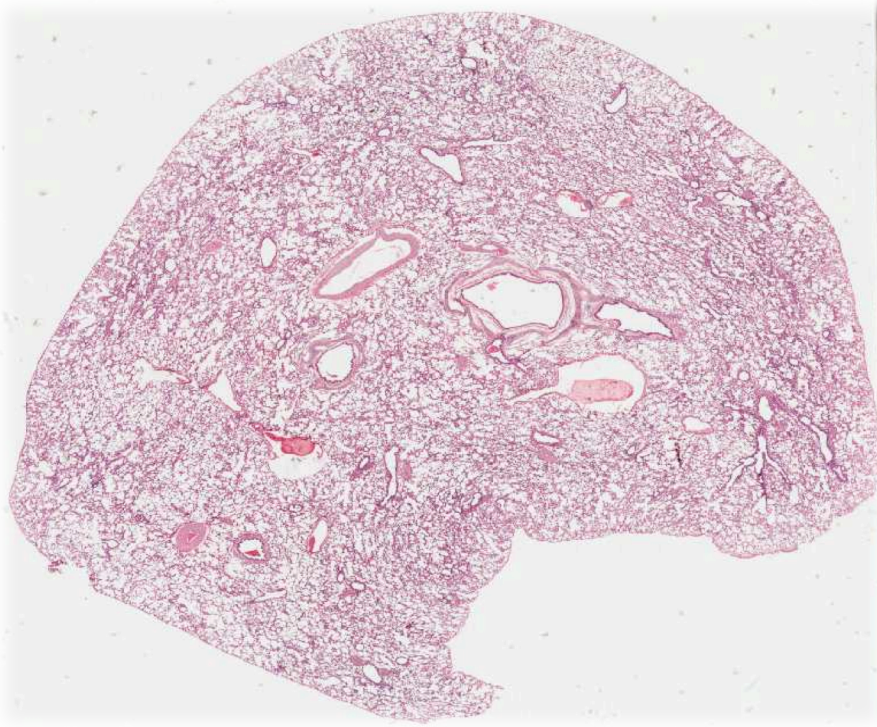
1- Mucosa :

- a. goblet cell .
- b. Respiratory mucosa, (Pseudo-stratified ciliated columnar epithelium with goblet cells) .
- c. Lamina propria
- d. Elastic lamina

2- Submucosa :

- e. Seromucous glands
- f. Lymphoid elements

Lung



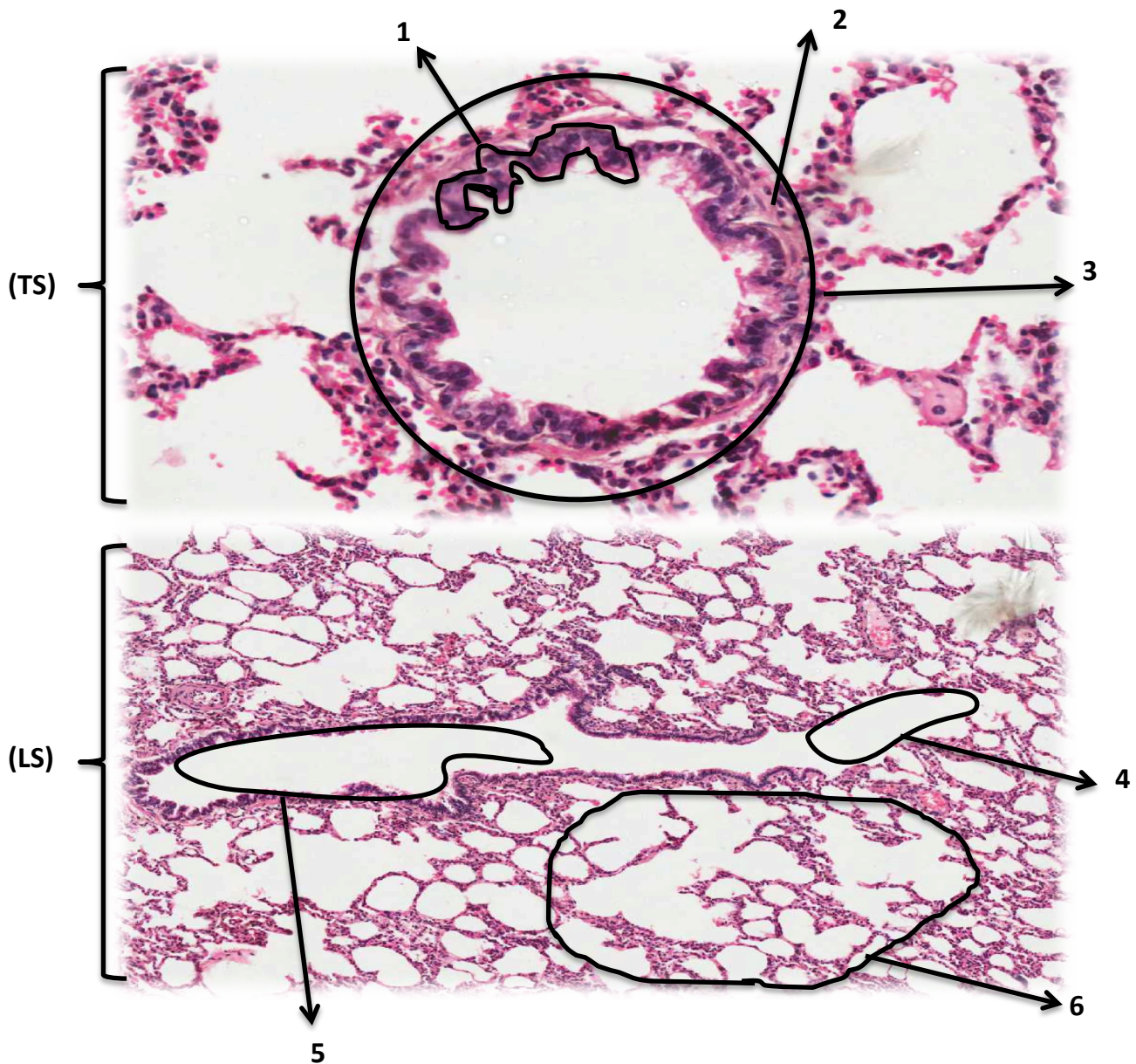
Intrapulmonary Bronchus



Feature :

- 1- Intrapulmonary bronchus
- 2- Complete layer of irregular plates of hyaline cartilage
- 3- Mucosa (mucous membrane) .
- 4- Smooth muscle
- 5- Bronchiole (it doesn't contain cartilage)

LUNG – Bronchiole



Feature :

- 1- Simple cuboidal or columnar partially ciliated epithelium with Clara cells .
- 2- Smooth muscle .
- 3- Bronchiole (TS)
- 4- Alveolar duct .
- 5- Bronchioles (LS)
- 6- Alveoli

Questions:

What is the type of cartilage forming the nasal septum?

What is the lining epithelium of the nasal cavity?

What are the layers and what kind of epithelium covers each of the following:

Trachea?

Bronchus?

Bronchiole?

What are the cells that form the Alveoli?