



Renal Block

Histology Team

Histology Practical: Histology of the Kidney

By: Wael Al Saleh
Mohammad Adel
Rana Al Ohaly
Moudi AlDegether

Contents:

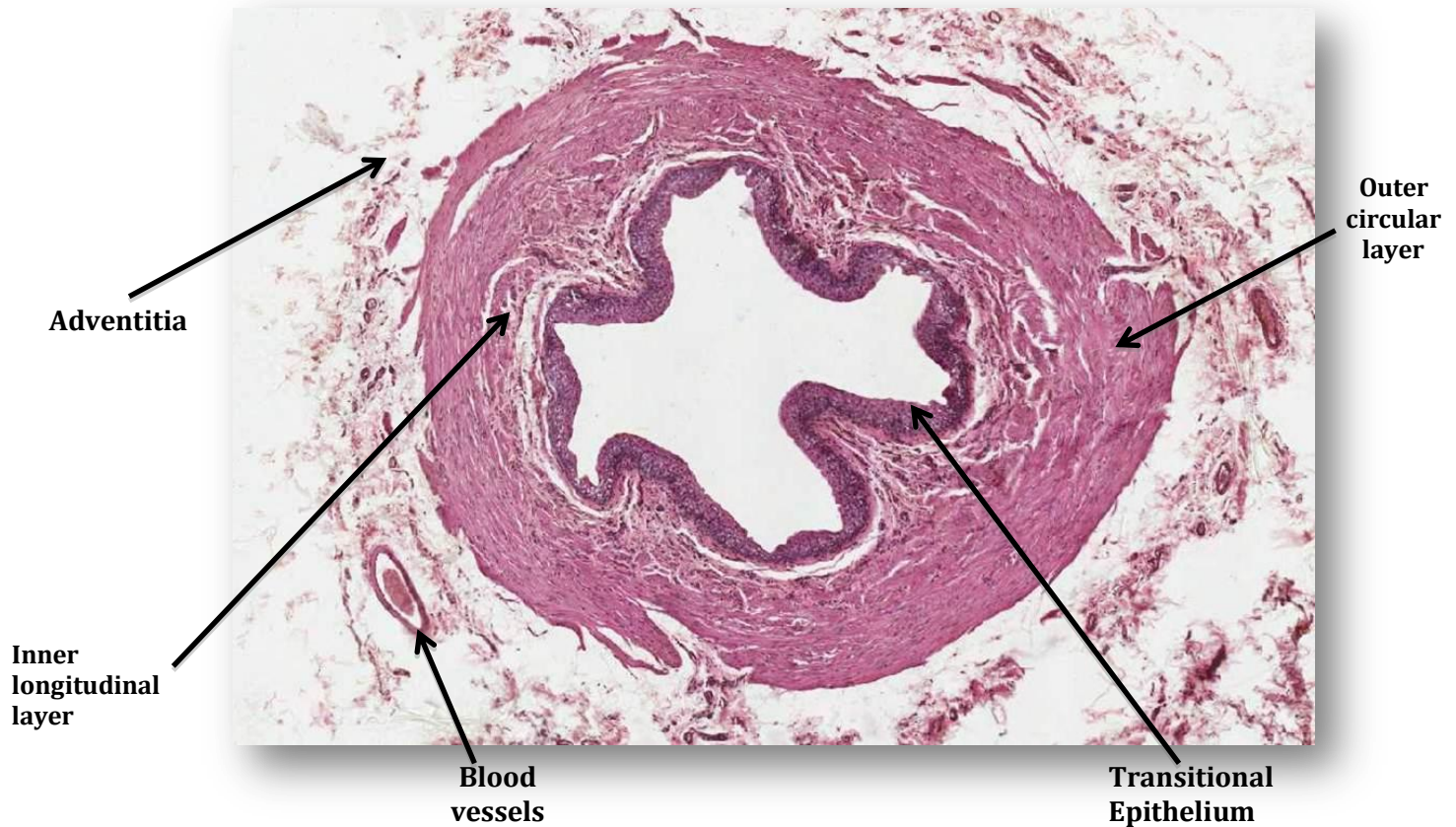
- Ureter
- Ureter / Urinary Mucosa
- Urinary Bladder-1
- Urinary Bladder-2



Means not likely to come in exam

432histologyteam@gmail.com

Ureter



1. Mucosa: Is formed of:

- transitional epithelium
- lamina propria.

2. Muscularis Propria (muscular coat):

Smooth muscle layers (not likely to come in exam):

Is formed of 2 layers of smooth muscle in the upper 2/3:

- Inner longitudinal.
- Outer circular.

Is formed of 3 layers of smooth muscle in the lower 1/3:

- Inner longitudinal .
- Middle circular.
- Outer longitudinal

3. Adventitia

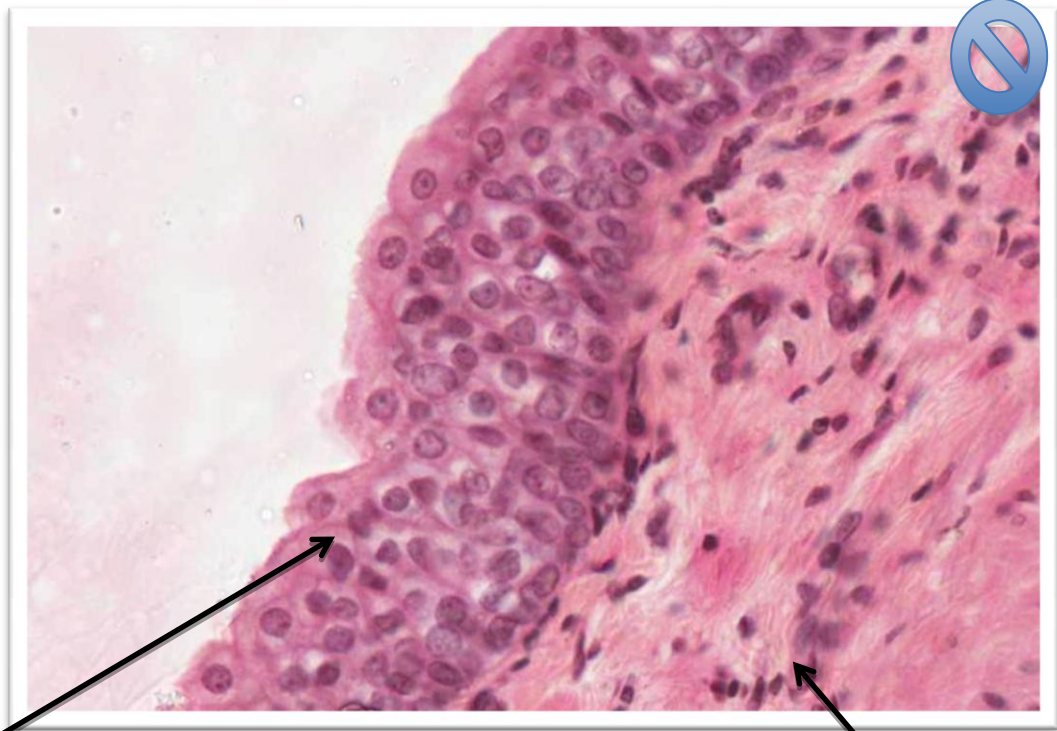
fibrous C.T. covering.

Q1: Identify? Ureter

Q2: the lining epithelium? Transitional epithelium

Q3: Enumerate the layers? 1-Mucosa 2-Muscularis propria 3-Adventitia

Urinary Mucosa / Ureter



Transitional
Epithelium

Lamina
propria

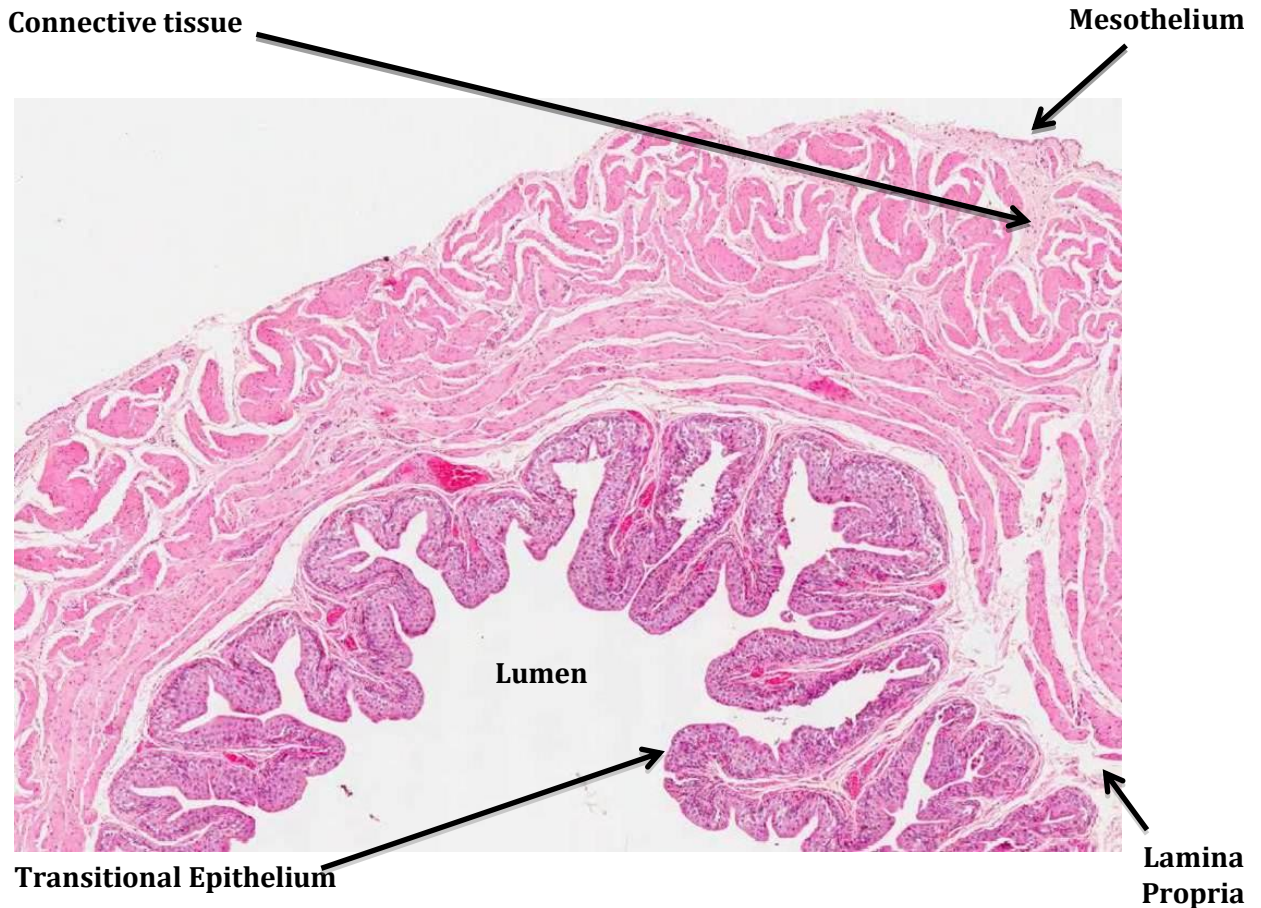
Mucosa:

Is formed:

- 1- transitional epithelium
- 2- lamina propria

We say urinary mucosa because we can only see the transitional epithelium and the lamina propria and as we know the transitional epithelium is found from the minor calyces until the bladder

Urinary Bladder



- **Mucosa:** (highly folded)
 - Transitional epithelium
 - Lamina propria
- **Muscularis Propria (muscle coat):**
 - Inner longitudinal (thin)
 - Middle circular (thick)
 - Outer longitudinal (thin)
- **Outer layer of connective tissue which is either:**
 - **Serosa** (if covered by mesothelium like in picture)
 - **Adventitia** (if it is NOT covered by mesothelium)

Q1: Identify ?

Urinary bladder

Q2: the lining epithelium?

Transitional epithelium

Q3: Enumerate the layers?

- 1- Mucosa
- 2- Muscle coat
- 3- Serosa or adventitia

Urinary Bladder



**Transitional
Epithelium
(Dome shaped cells)**

Lamina Propria