



HISTOLOGY PRACTICAL REVISION

FOUNDATION BLOCK



@HISTO433

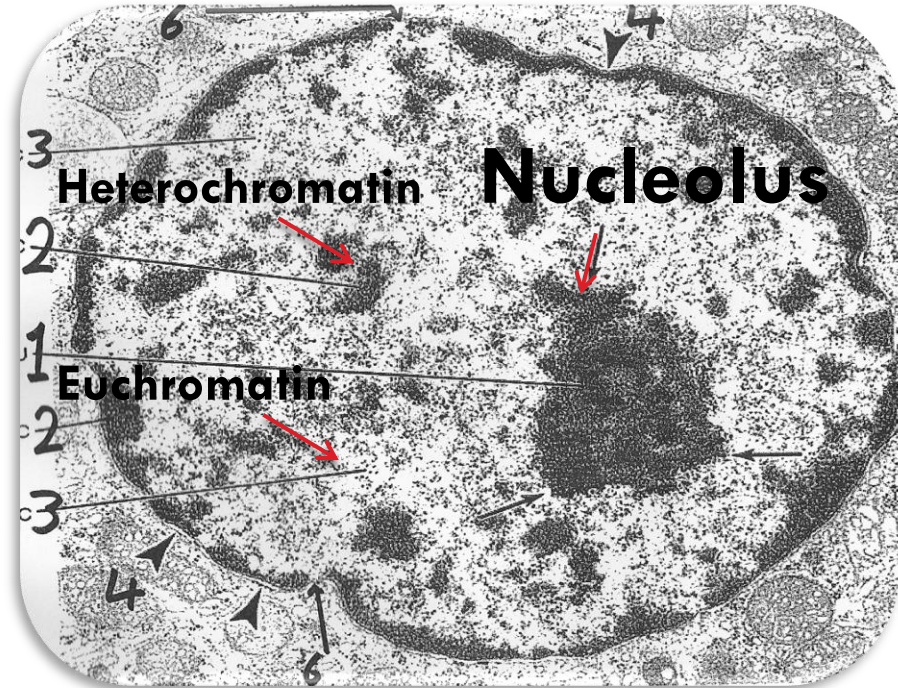
Histology.team@gmail.com

Nucleus

Identify ?

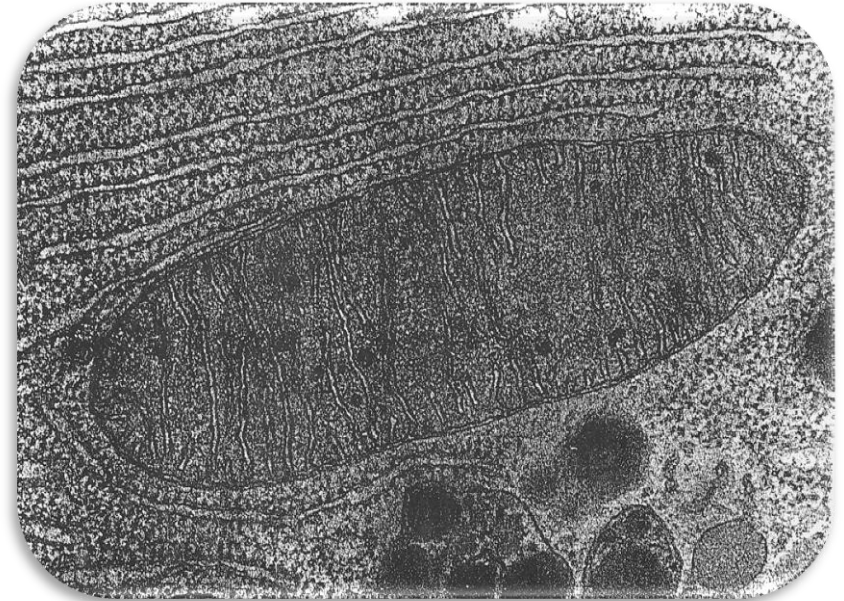
- Nucleolus
- Heterochromatin
- Euchromatin

	Function
Nucleolus	Synthesis of rRNA (Ribosomal RNA)
Heterochromatin	-
Euchromatin	Control protein synthesis



Mitochondria

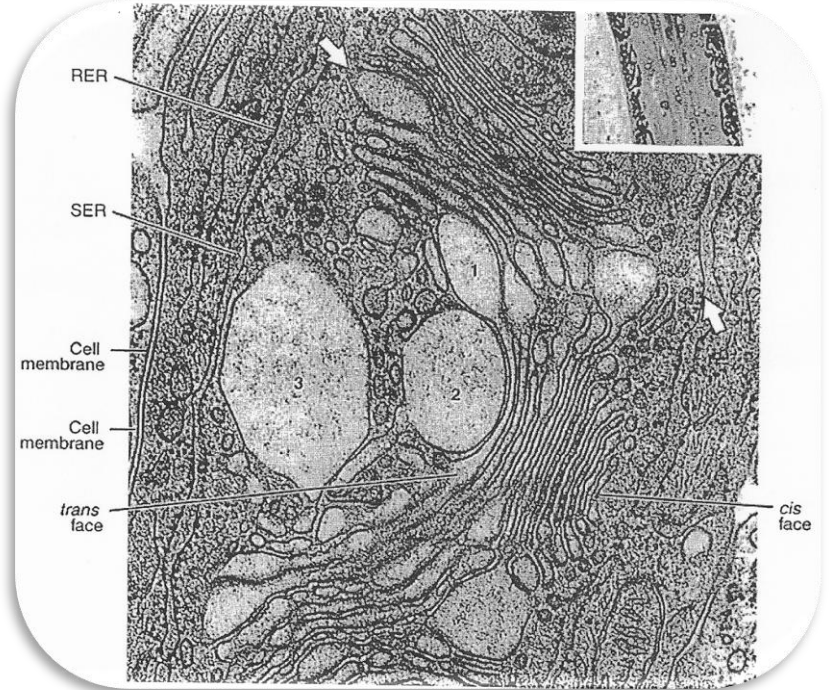
Function: Production of ATP



Golgi Apparatus

Function:

- 1) **Packaging** of proteins.
- 2) Production of **Secretory vesicles**.
- 3) **Modification** of proteins.
- 4) Formation of **lysosomes**.



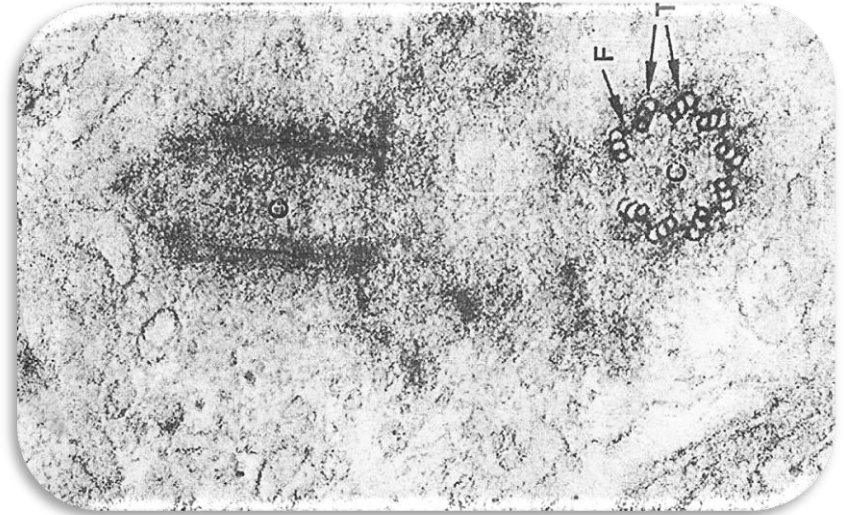
Rough Endoplasmic Reticulum

Function: Synthesis of protein



Centrioles

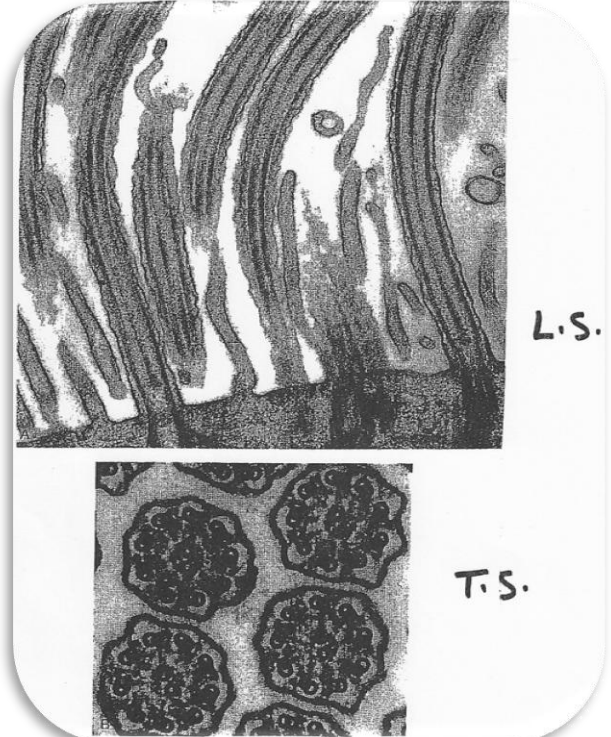
Function: Formation of **Mitotic Spindles** during Cell division.



Cilia

Distribution:

- Respiratory passage.
- Fallopian tube



Microvilli

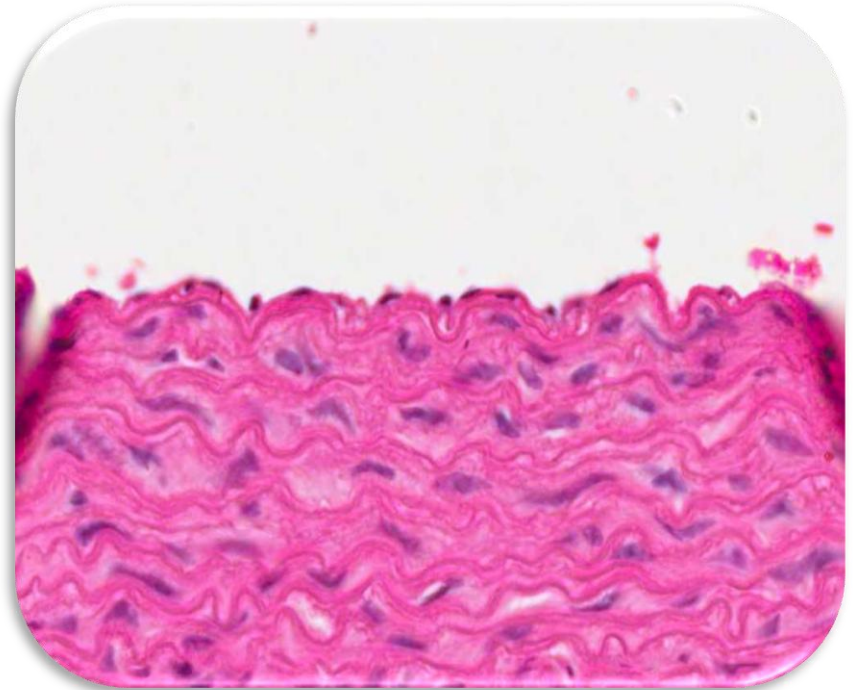
- Finger light projection (Cell Membrane)
- No **Microtubules**



Simple Squamous Epithelium

Distribution:

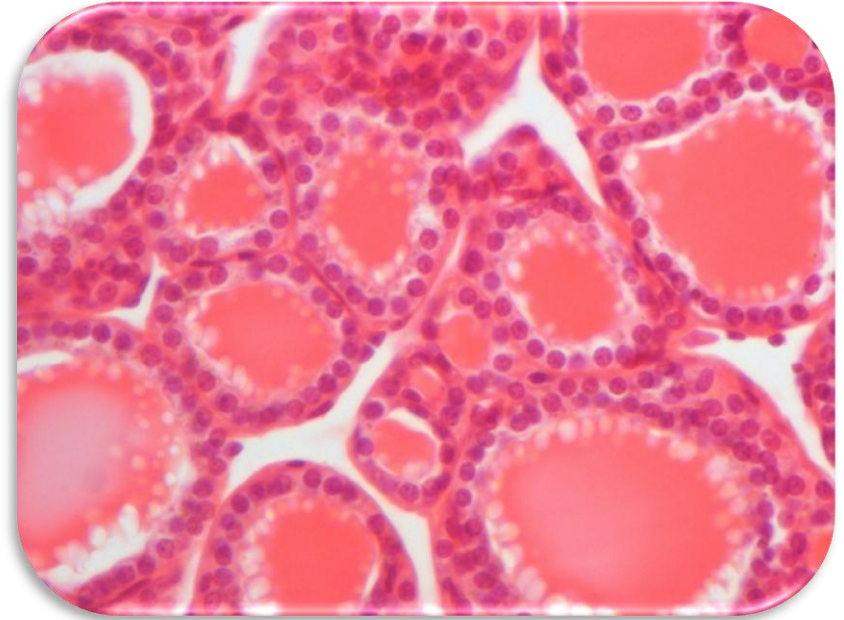
Blood vessels



Simple Cuboidal Epithelium

Distribution:

Thyroid gland

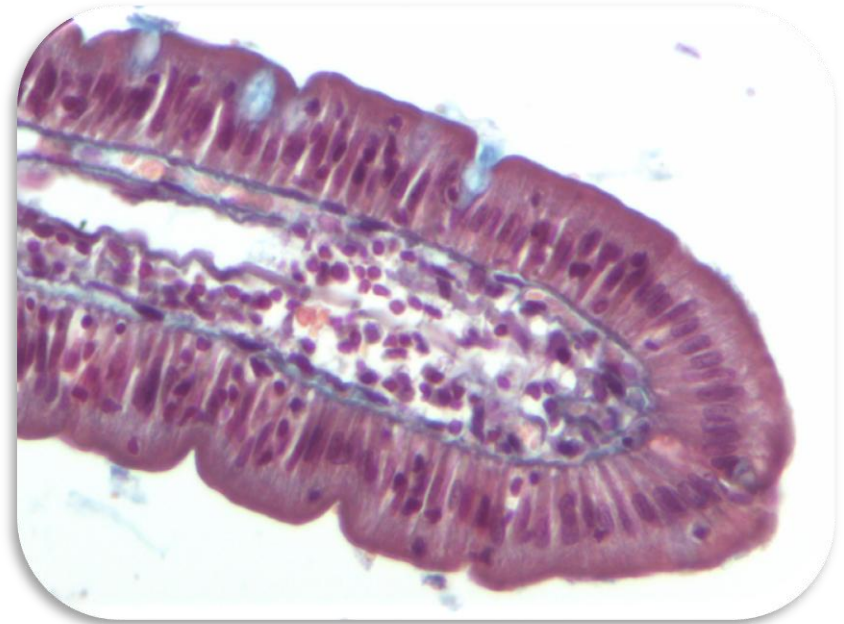


Simple Columnar Epithelium

* With **Goblet cells**

Distribution:

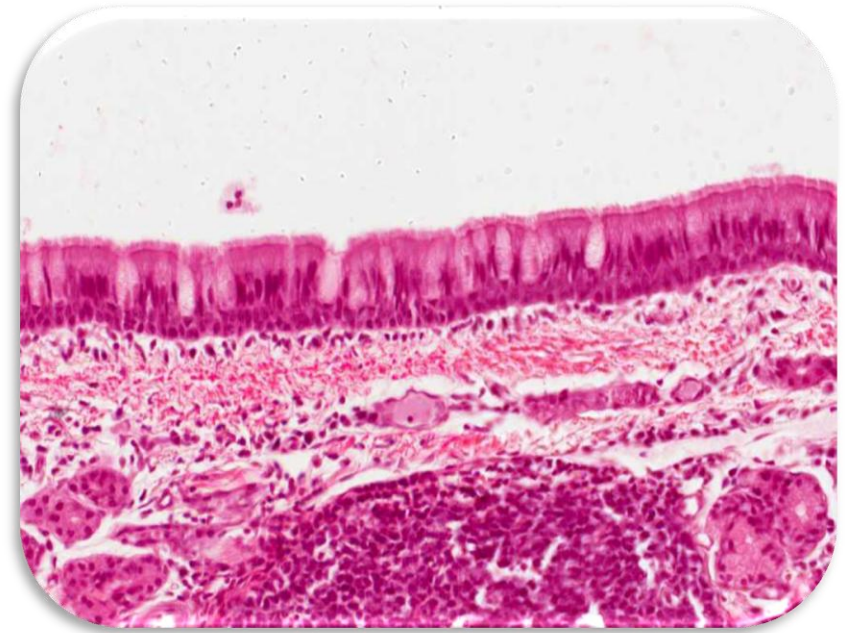
Intestinal epithelium



Pseudostratified Columnar Ciliated Epithelium **with Goblet Cells**

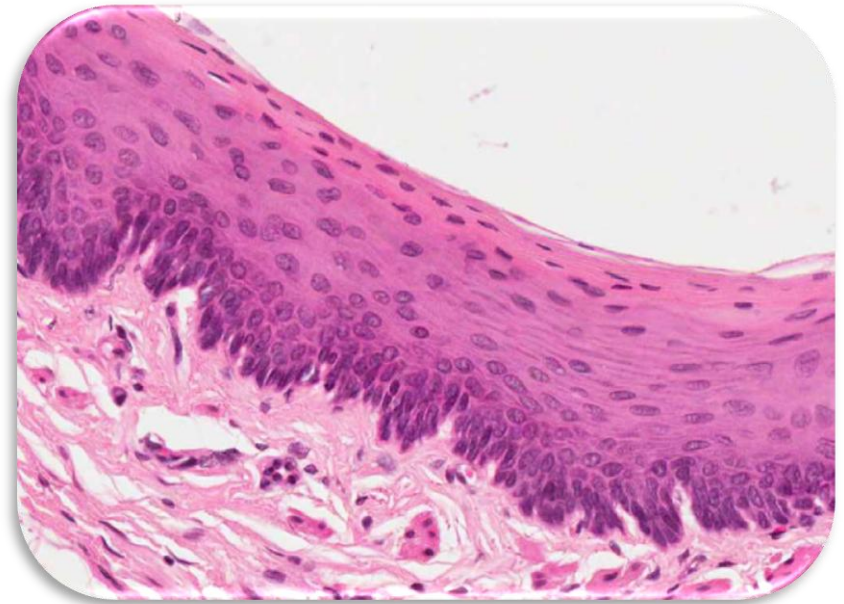
Distribution:

Trachea & bronchi



Stratified Squamous **Non-Keratinized** Epithelium

Distribution:
Esophagus



Stratified Squamous **Keratinized** Epithelium

Distribution:

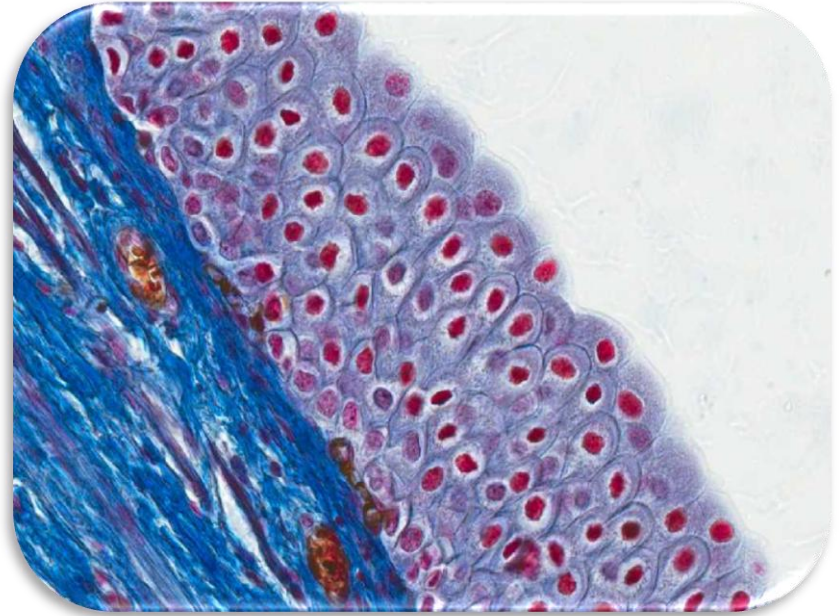
Epidermis of skin



Transitional Epithelium

Distribution:

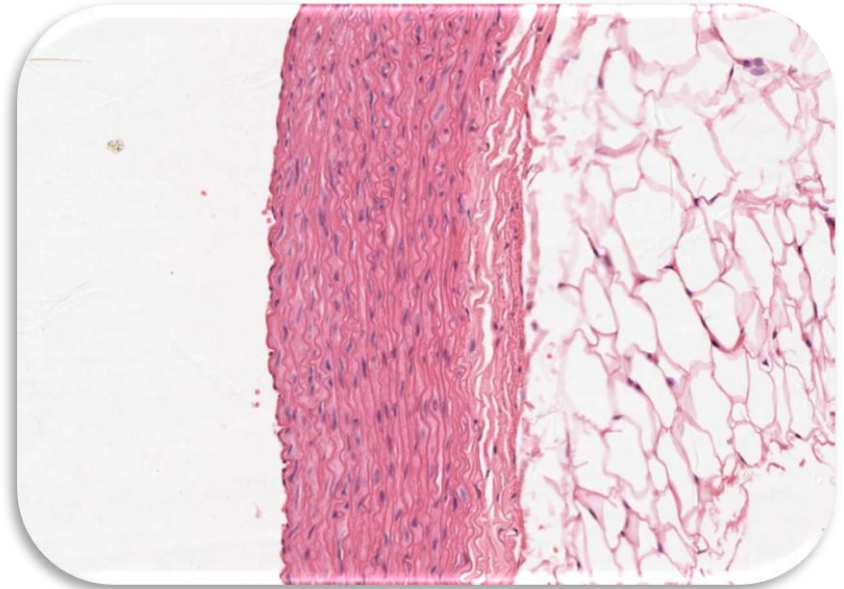
Urinary bladder



Elastic Connective Tissue

Distribution:

Aorta

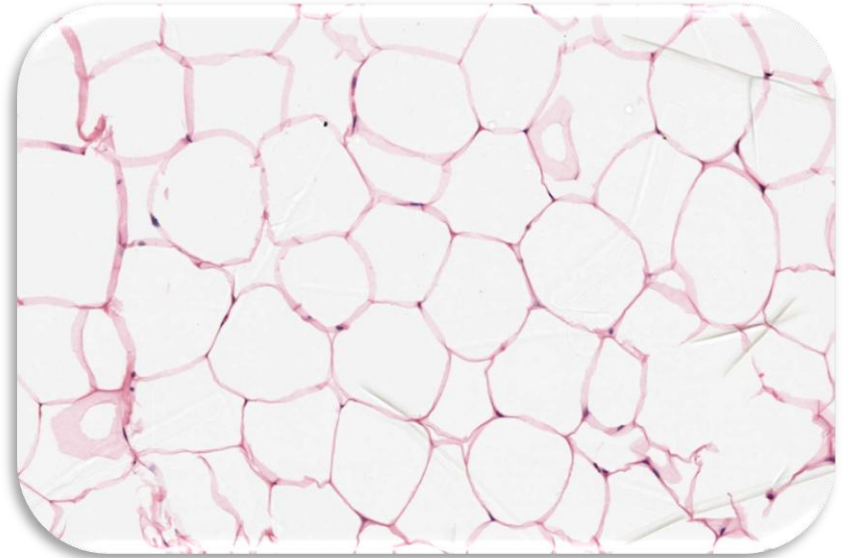


Adipose Connective Tissue

Or: - Fatty C.T
- Adipose Tissue

Main Component:

Fat cells (Adipocyte)



Dense Fibrous Connective Tissue

Dense **Collagenous** C.T

- Regular

Distribution:

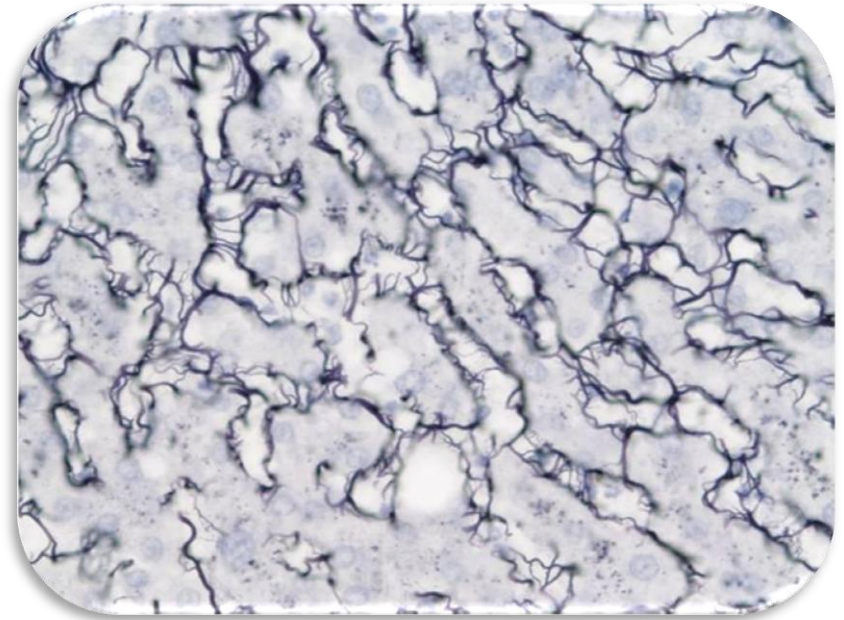
Tendons



Reticular Connective Tissue

Distribution:

- Lymph node
- Spleen



Plasma Cell

Function:

Secretion of Antibodies
(immunoglobulins).

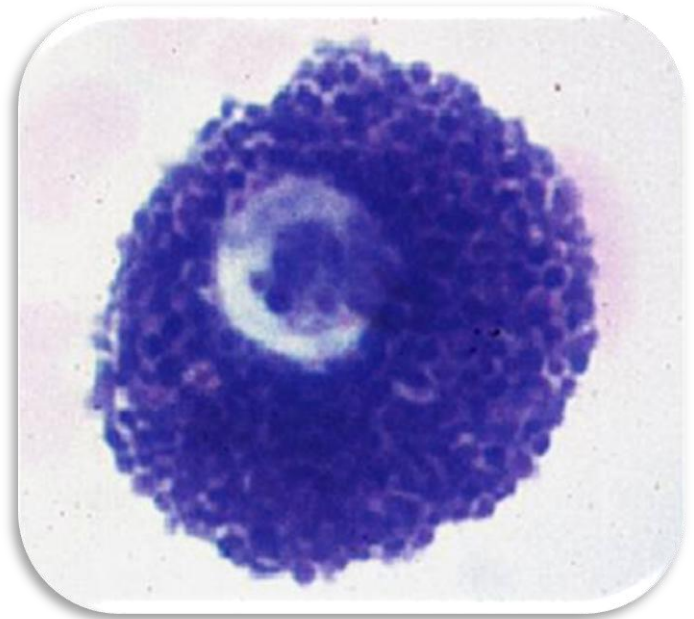


Mast Cell

Function:

Secrete Histamine & Heparin.

- Histamine (Allergic reaction)
- Heparin (Anticoagulant)



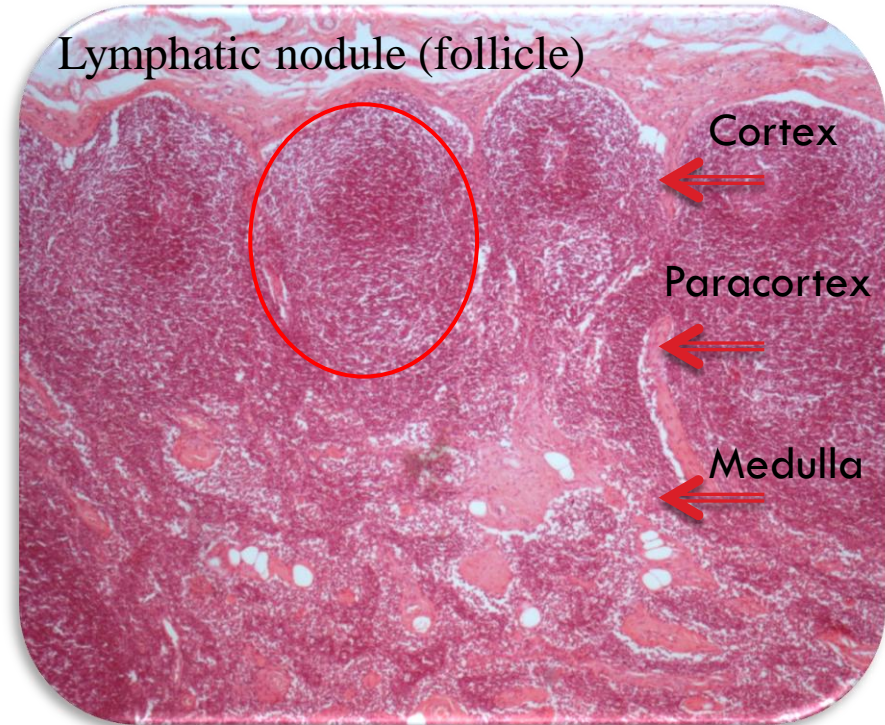
Lymph Node

Location:

- 1- Cortex
- 2- Paracortex
- 3- Medulla

Main type of cells:

B and T lymphocytes,
plasma cell , macrophages



Thymus

Location:

1 - Cortex

2 - Medulla (Hassall's corpuscles)

Main type of cells:

T lymphocytes



Work Done By:

Faris Al-Harbi

AlAnoud AlBegami

Abdulmalek AlNujidi

[Practical Revision](#)



Histology.team@gmail.com



[@Histo433](#)

