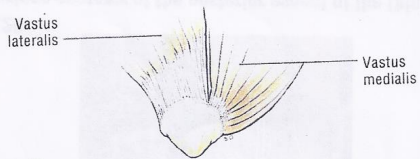


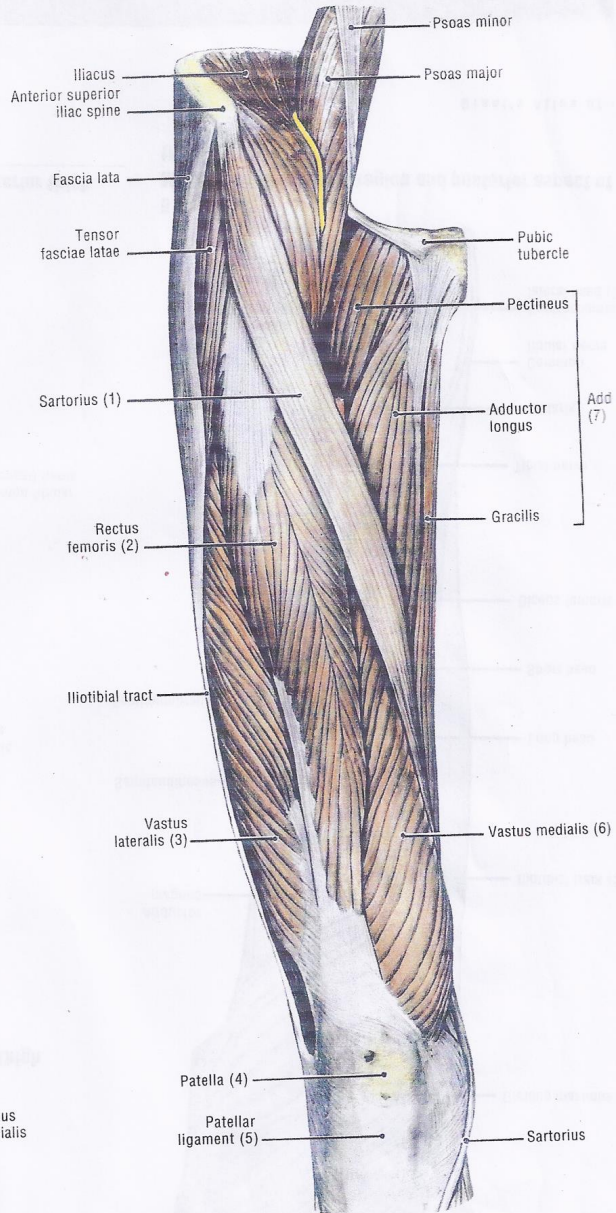
Anterior view

5.18
Surface anatomy of the thigh

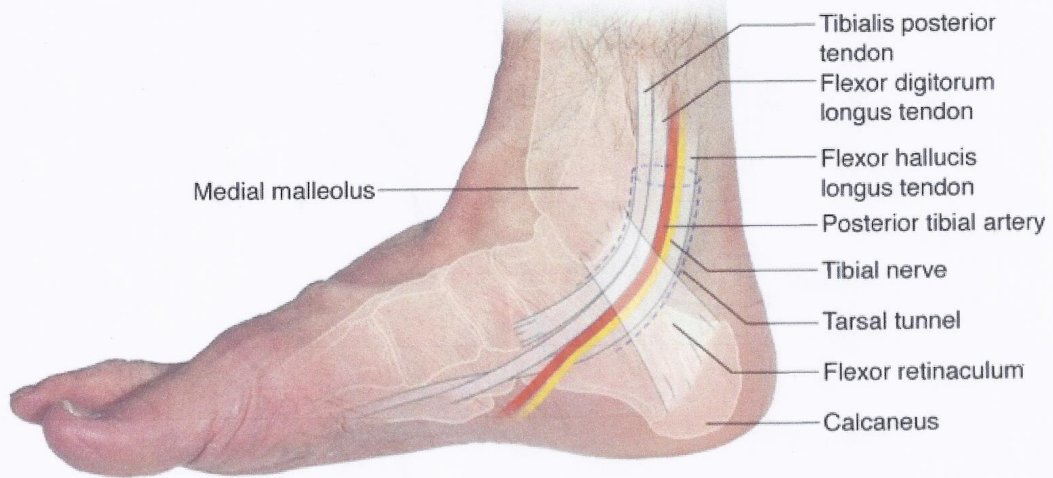
Observe:
The quadriceps inserting on the patella and then via the patellar ligament to the tibial tuberosity; the vastus medialis muscle attaching to the base and proximal two-thirds of the medial surface of the patella and the vastus lateralis attaching mainly to the base of the patella and slightly on to the lateral surface.
Numbers refer to structures in Figure 5.20.

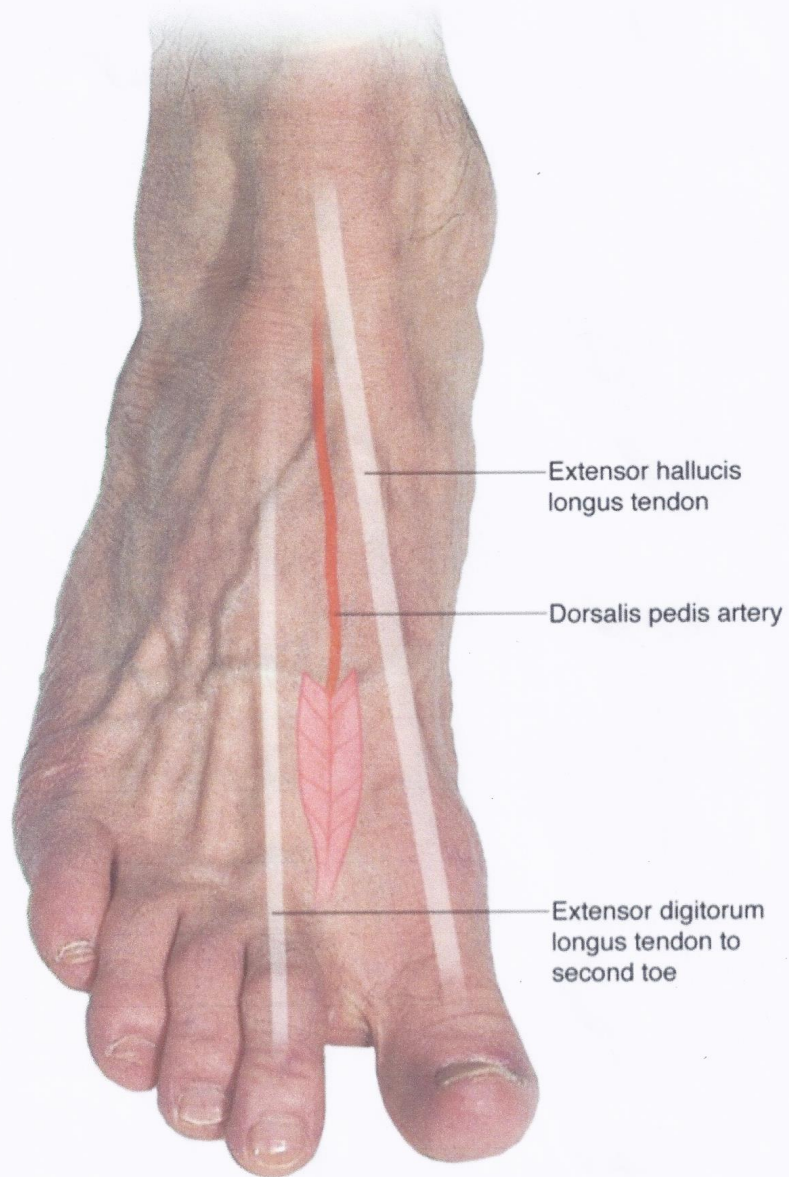


5.19
Patellar attachment of vastus medialis and lateralis muscles

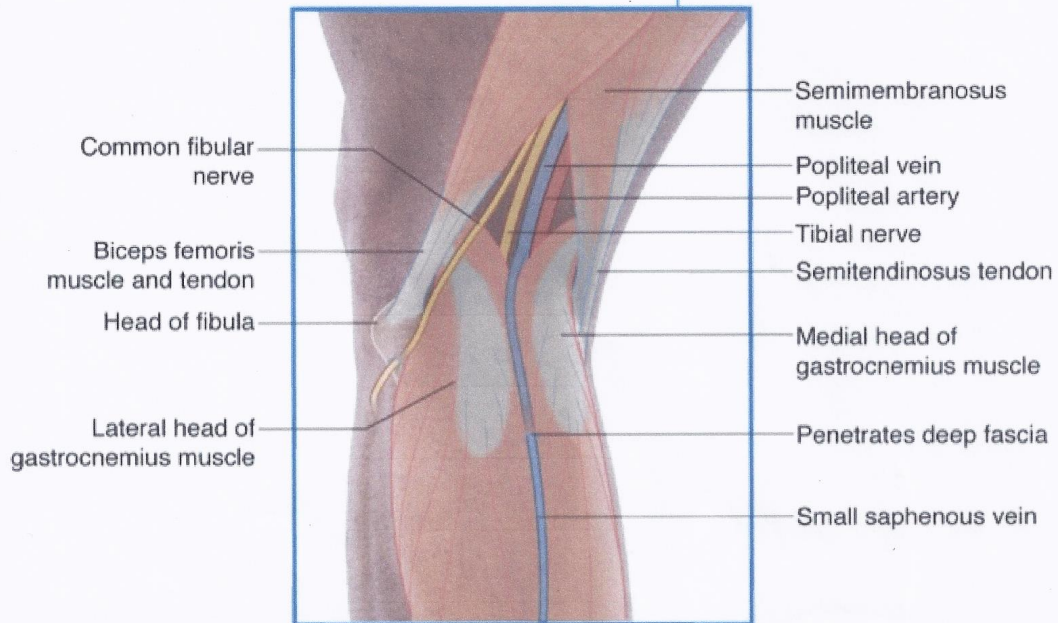
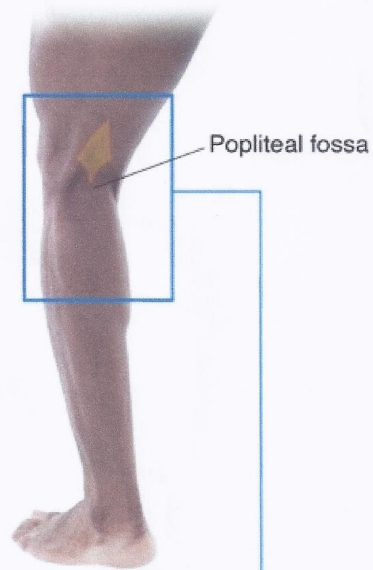


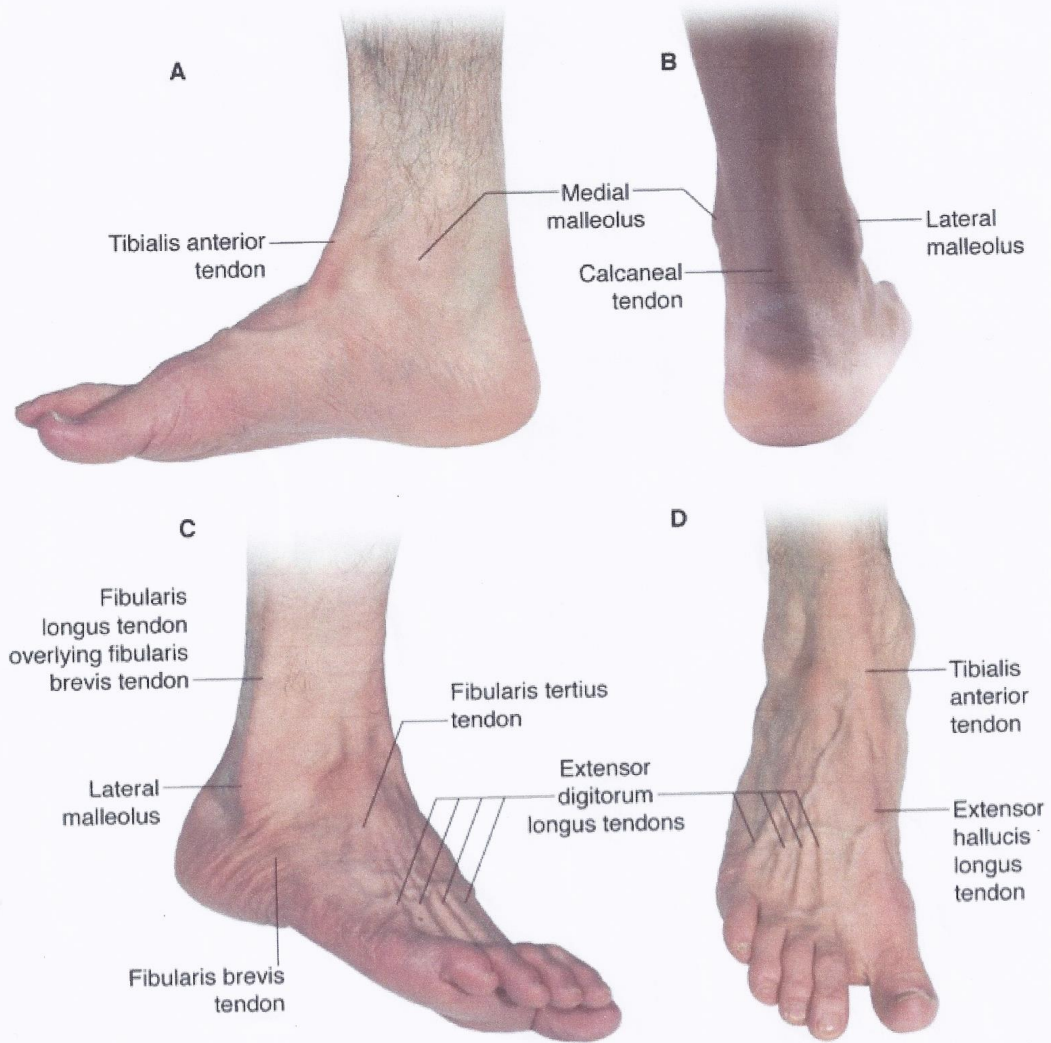
5.20
Muscles, anterior aspect of the thigh-I

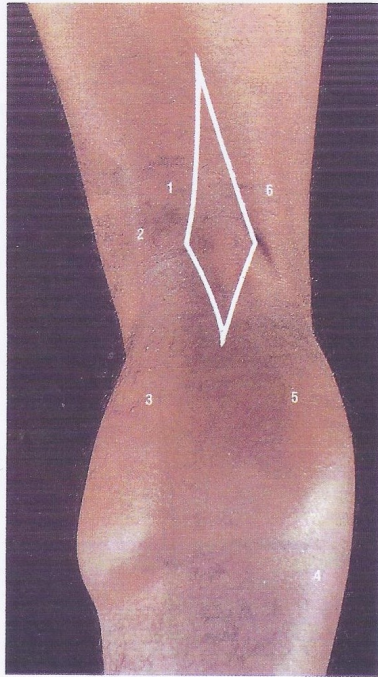




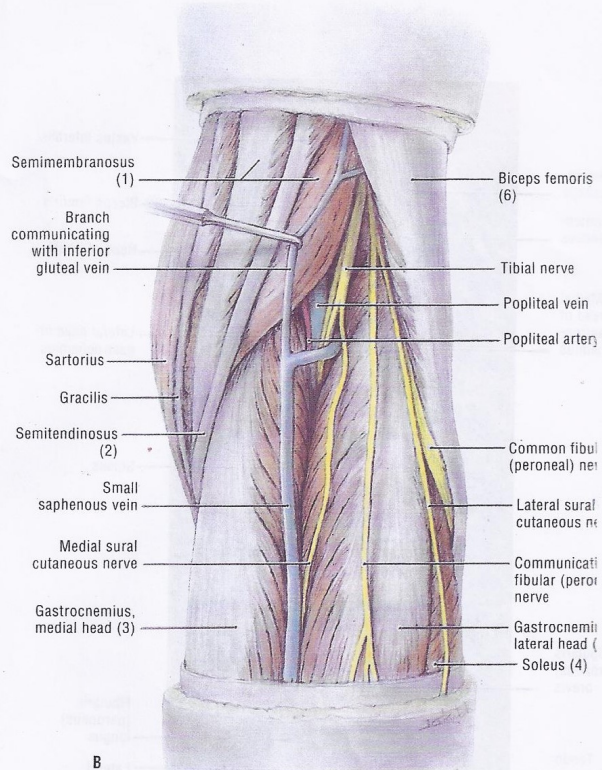
Y'S Anatomy for Students







A



B

5.53 Popliteal fossa

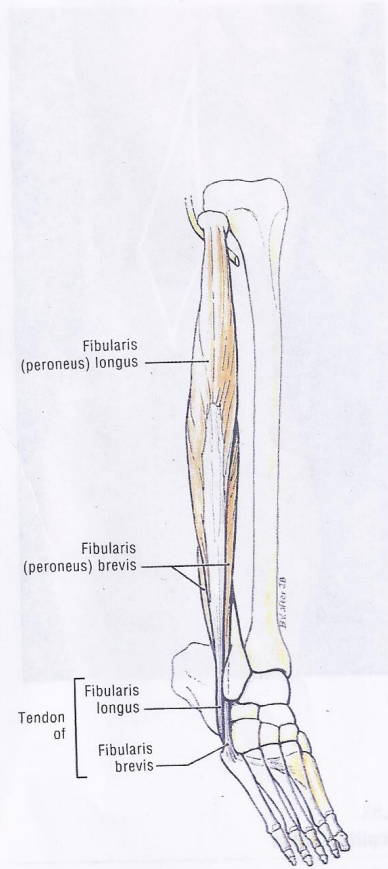
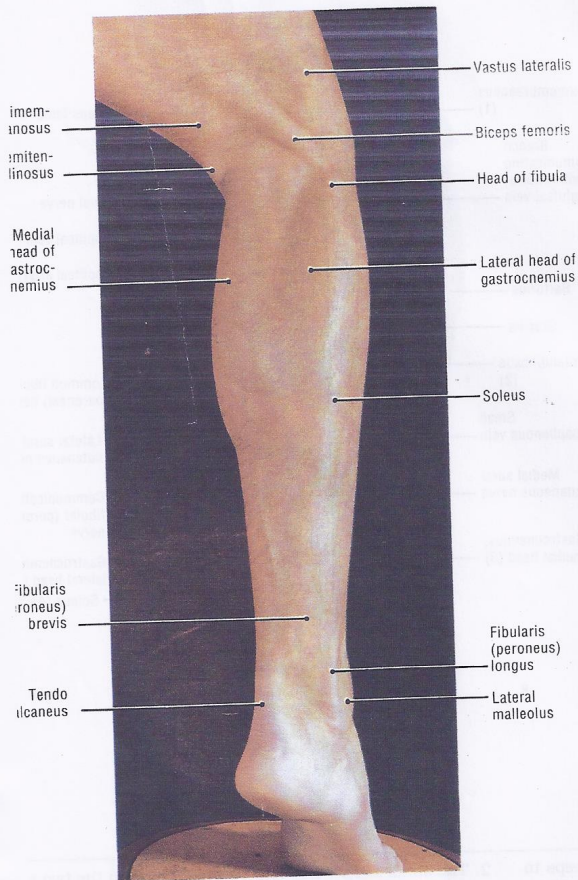
A. Surface anatomy. The hamstring muscles, diverge, biceps to the fibula and the two semi-muscles to the tibia; the origins of the medial and lateral heads of gastrocnemius are deep to the hamstrings. The diamond-shaped popliteal fossa is outlined. Numbers refer to structures in **B**. **B. Superficial dissection.**

Observe:

1. The two heads of the gastrocnemius muscle, embraced on the medial side by the semimembranosus muscle, which is overlaid by the semitendinosus muscle, and on the lateral side by the biceps femoris muscle;

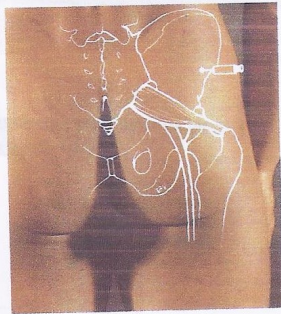
2. The small saphenous vein running between the two heads of the gastrocnemius muscle; deep to this vein is the medial sural cutaneous nerve which, followed proximally, leads to the tibial nerve; the tibial nerve is superficial to the popliteal vein, which, in turn, is superficial to the popliteal artery;

3. The common fibular (peroneal) nerve following the posterior border of the biceps femoris muscle, and here giving off cutaneous branches.

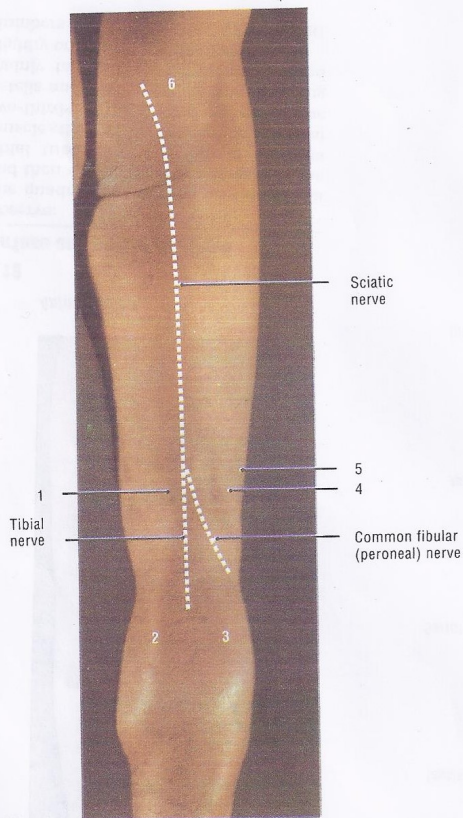


75
 Surface anatomy of the lateral aspect of the leg and foot

5.76
 Diagram of the fibular (peroneal) muscles

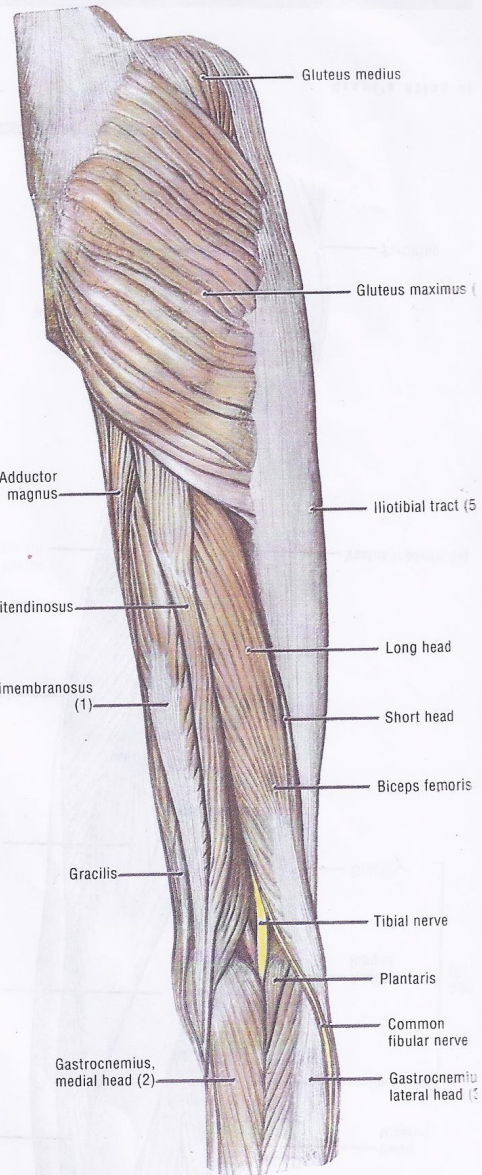


5.29
Surface anatomy of the posterior aspect of the thigh



5.30
Surface anatomy of the gluteal region and posterior thigh

Numbers refer to structures in Figure 5.30.



5.31
Muscles of the gluteal region and posterior aspect of thigh-I