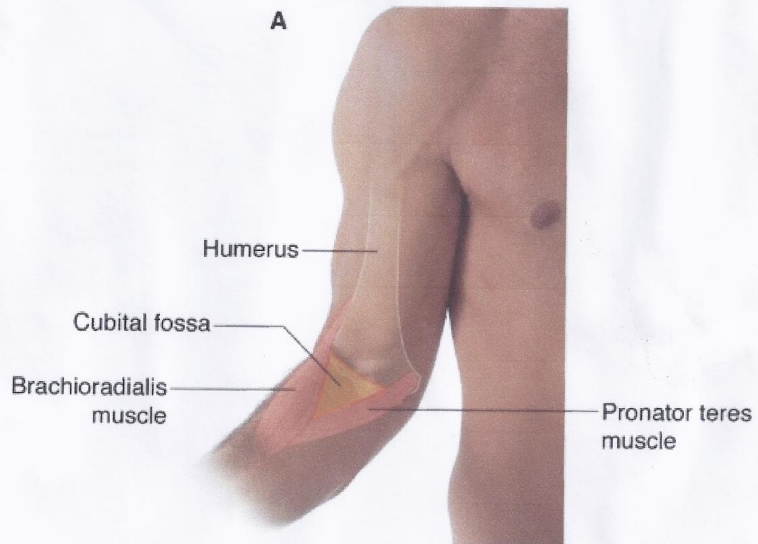
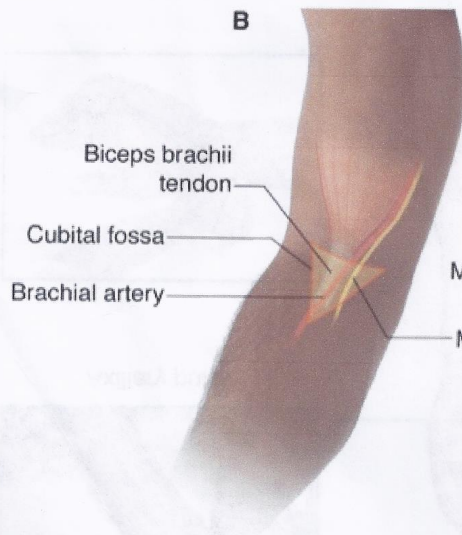


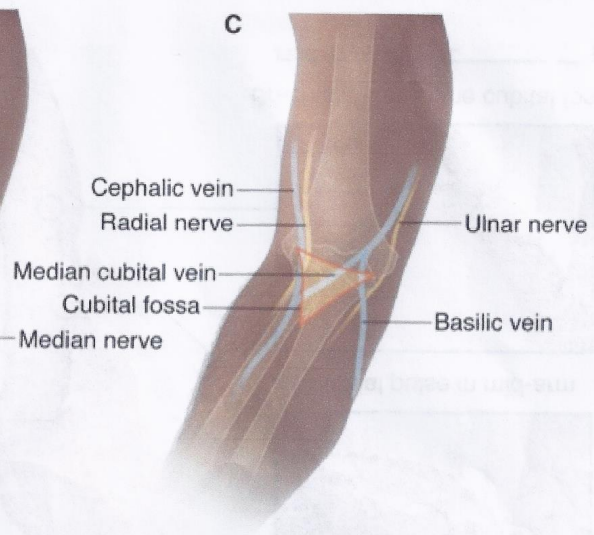
A



B



C

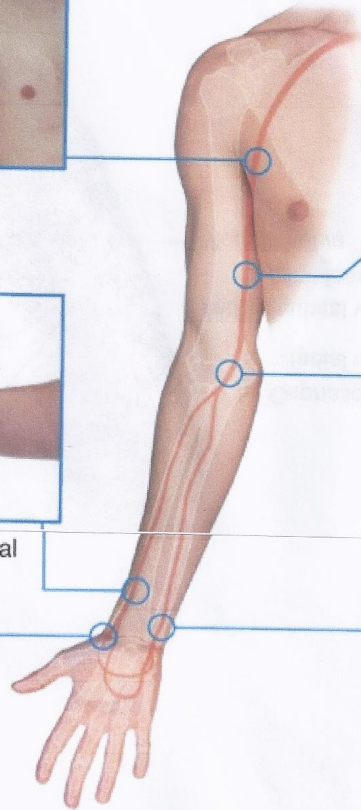


"S Anatomy for Students



Axillary pulse

A



Brachial pulse in mid-arm



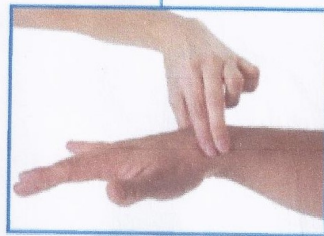
Brachial pulse in the cubital fossa



Radial pulse in distal forearm



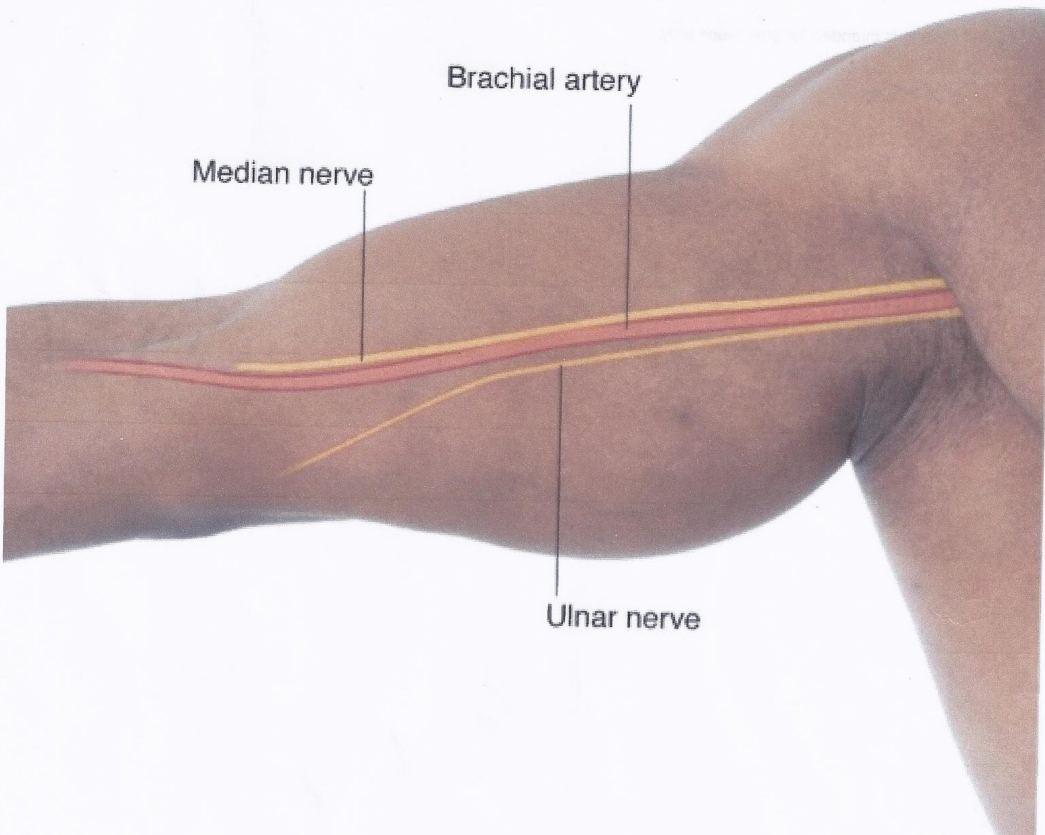
Ulnar pulse in distal forearm



Radial pulse in the anatomical snuffbox

B



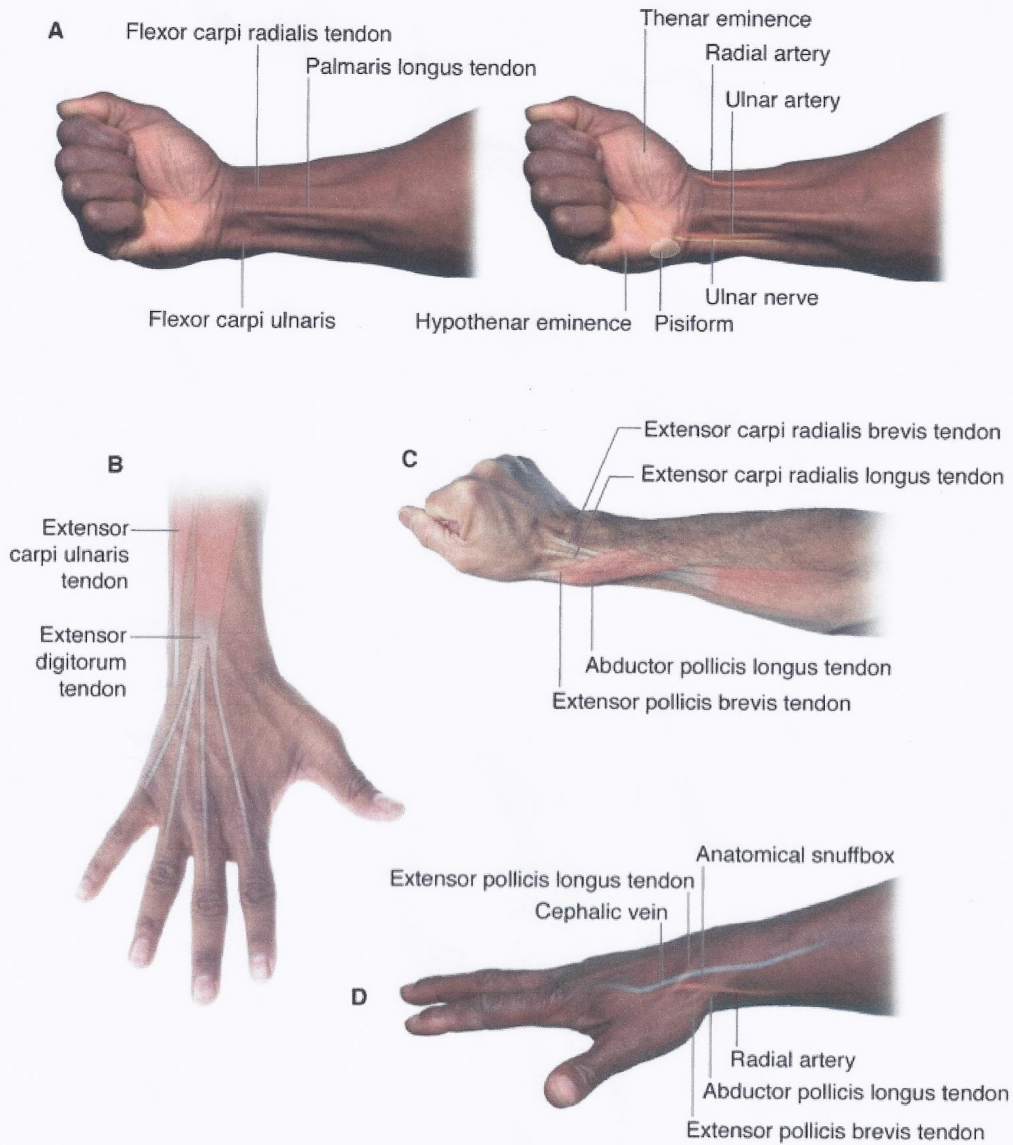


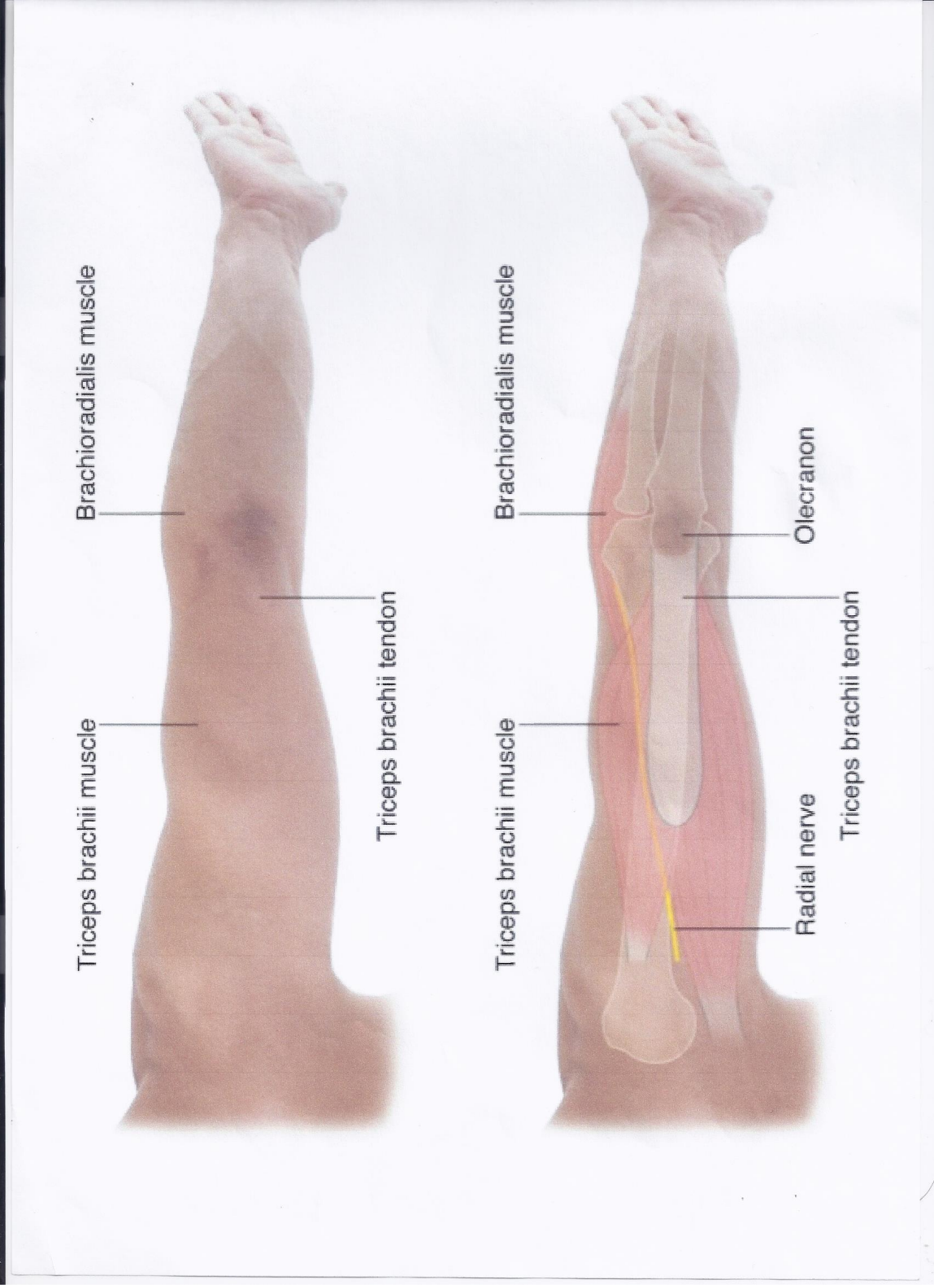
Brachial artery

Median nerve

Ulnar nerve

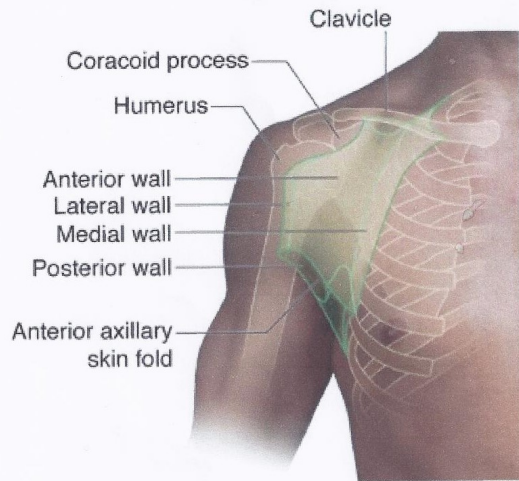
GRAY'S Anatomy for Students



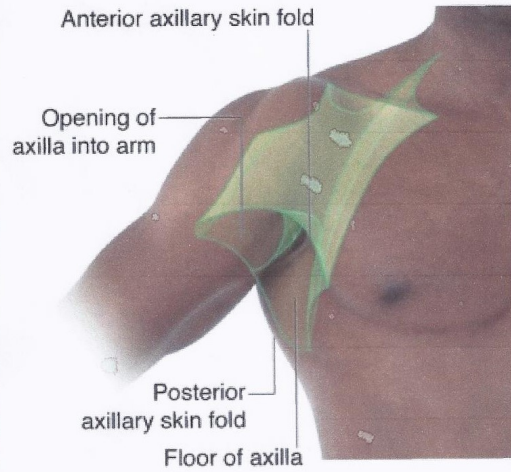


RAY'S Anatomy for Students

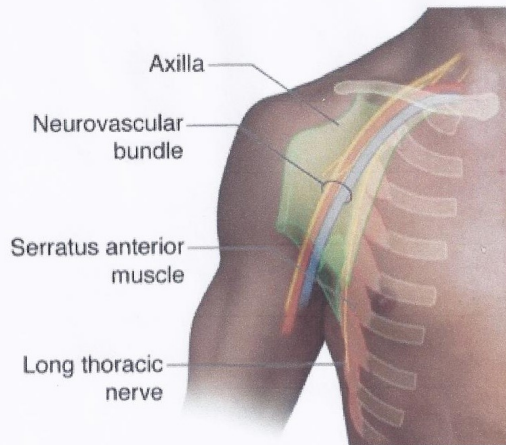
A



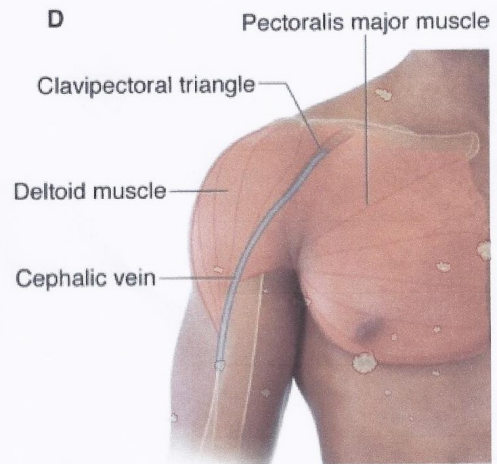
B

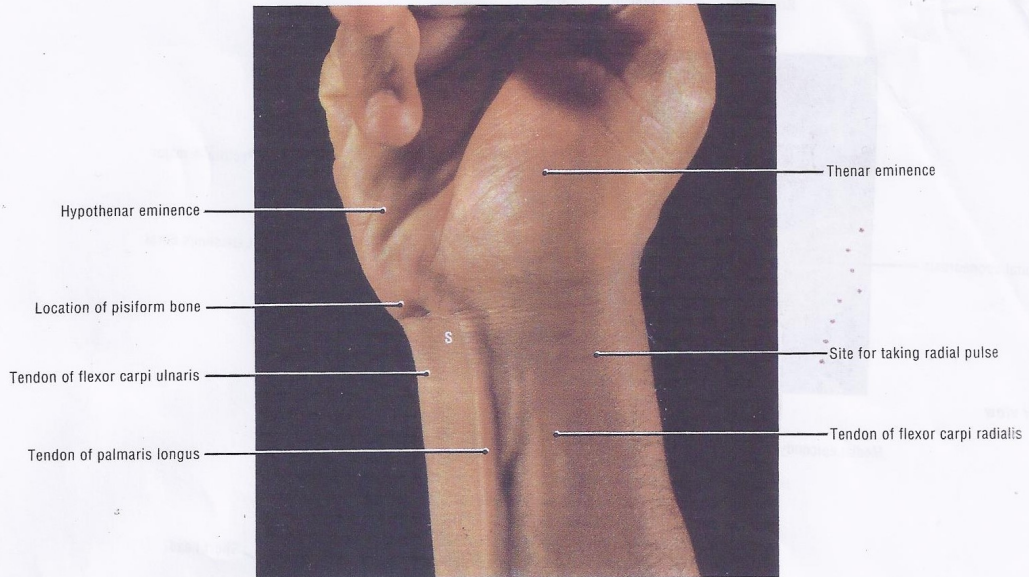


C



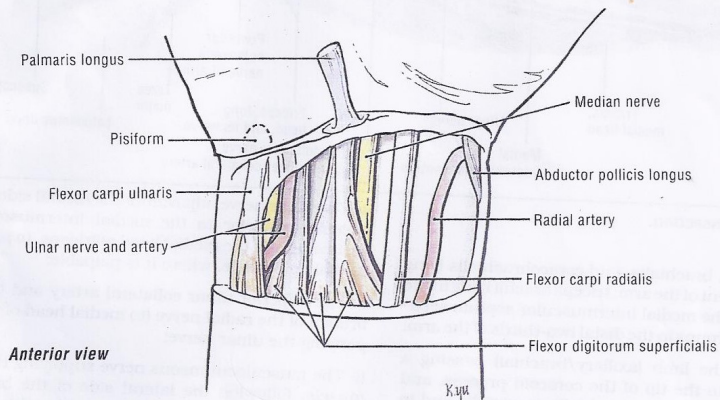
D



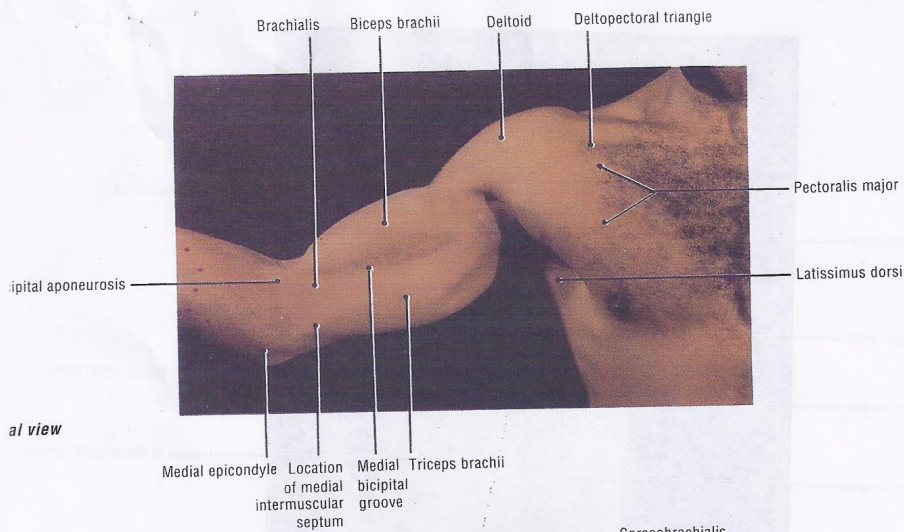


6.85
Surface anatomy of the distal forearm and wrist

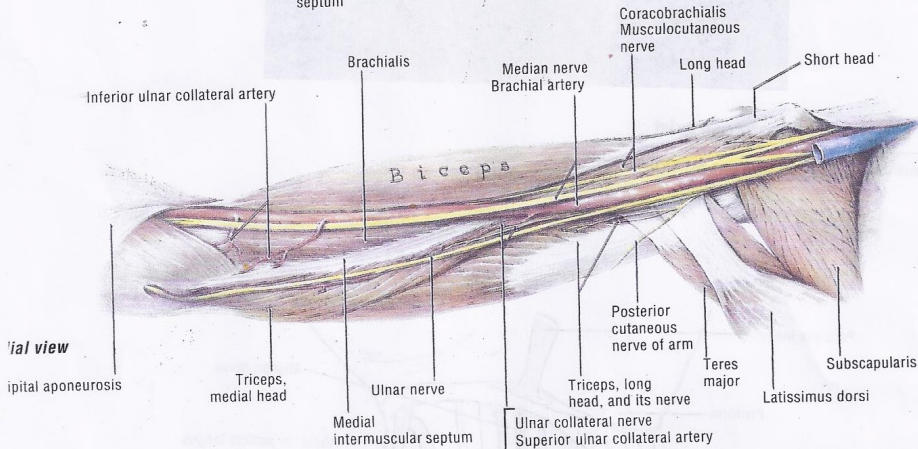
S - Location of tendons of flexor digitorum superficialis.



6.86
Diagram of the superficial structures at the wrist



Medial view



Medial view

ce anatomy. **B.** Dissection.

in **B:**

muscles: biceps, brachialis, and coracobrachialis lying anterior compartment of the arm; triceps brachii lying in the posterior compartment; the medial intermuscular septum separates these two muscle groups in the distal two-thirds of the arm;

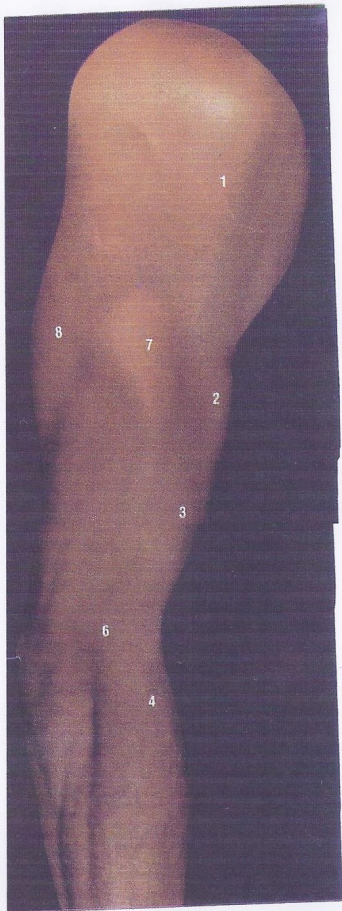
great artery of the limb (axillary/brachial) passing a breadth medial to the tip of the coracoid process, and to the medial side of coracobrachialis proximally and to the anterior aspect of brachialis distally;

median nerve adjacent to the artery throughout and the artery from lateral to medial;

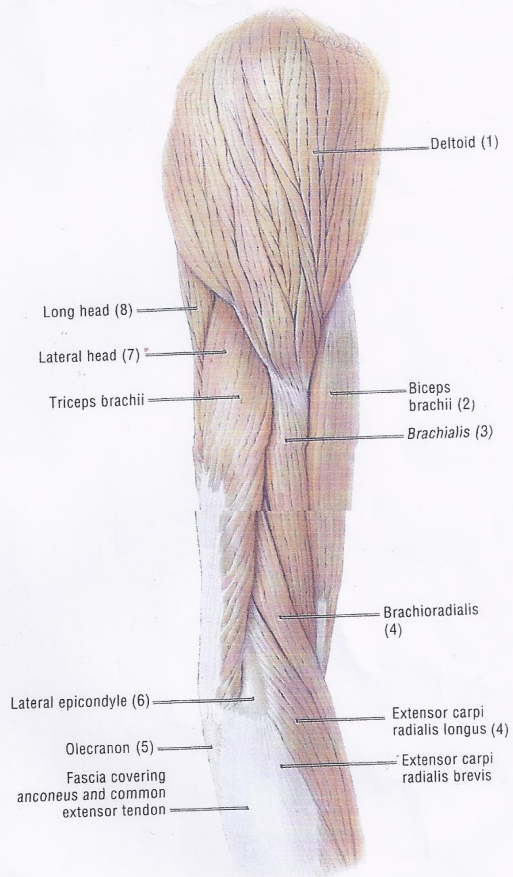
4. The ulnar nerve adjacent to the medial side of the artery, then passing posterior to the medial intermuscular septum, and descending on the medial head of triceps, to pass posterior to the medial epicondyle, where it is palpable;

5. The superior ulnar collateral artery and the ulnar collateral branch of the radial nerve (to medial head of the triceps) accompanying the ulnar nerve;

6. The musculocutaneous nerve supplying the coracobrachialis muscle, following the lateral side of the brachial artery, and disappearing between the biceps and brachialis, accompanied by an arterial branch to these two muscles; more commonly, it pierces the coracobrachialis muscle.



Lateral view



Lateral view

6.39
Muscles of the arm

Numbers in parentheses refer to structures in Figure 6.38.

atomy of the arm

er Limb