



HISTOLOGY PRACTICAL REVISION

RESPIRATORY BLOCK



@HISTO433

Histology.team@gmail.com

OSPE

- There will be 2 stations.
- Q: Identify ?
- Q: Lining epithelium ?
- Q: Type of cartilage ?
- You should write the 8 words instead of Respiratory Epithelium.

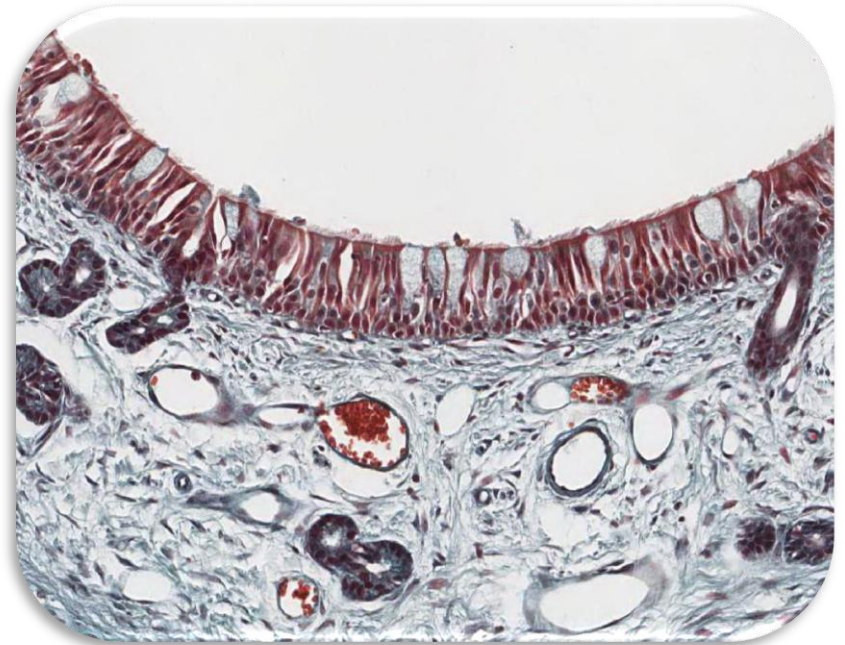
NASAL SEPTUM

- Pseudo-stratified ciliated columnar epithelium with goblet cells (Respiratory epithelium).
- Hyaline cartilage.



NASAL MUCOSA

- Pseudo-stratified ciliated columnar epithelium with goblet cells.
- Lamina propria.



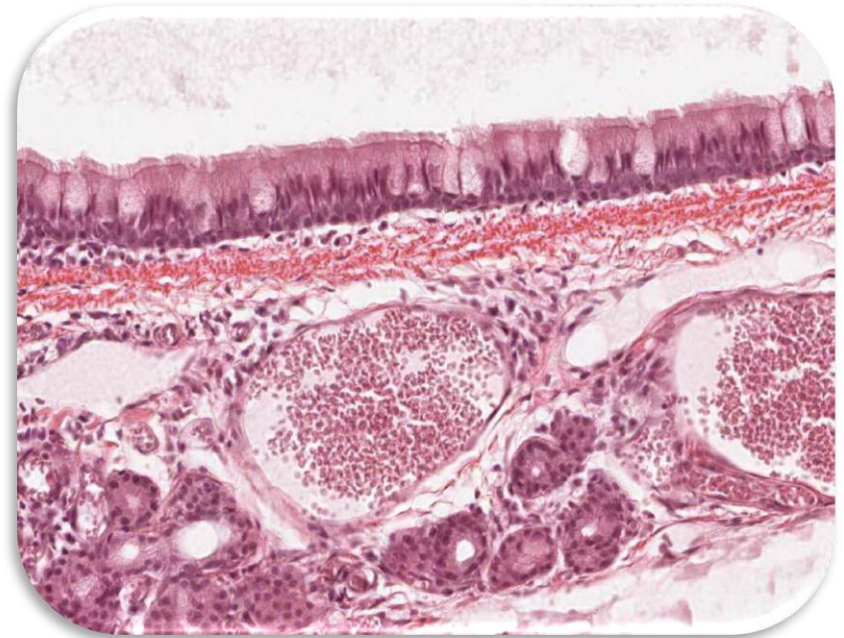
TRACHEA

- Pseudo-stratified ciliated columnar epithelium with goblet cells
- Hyaline cartilage.



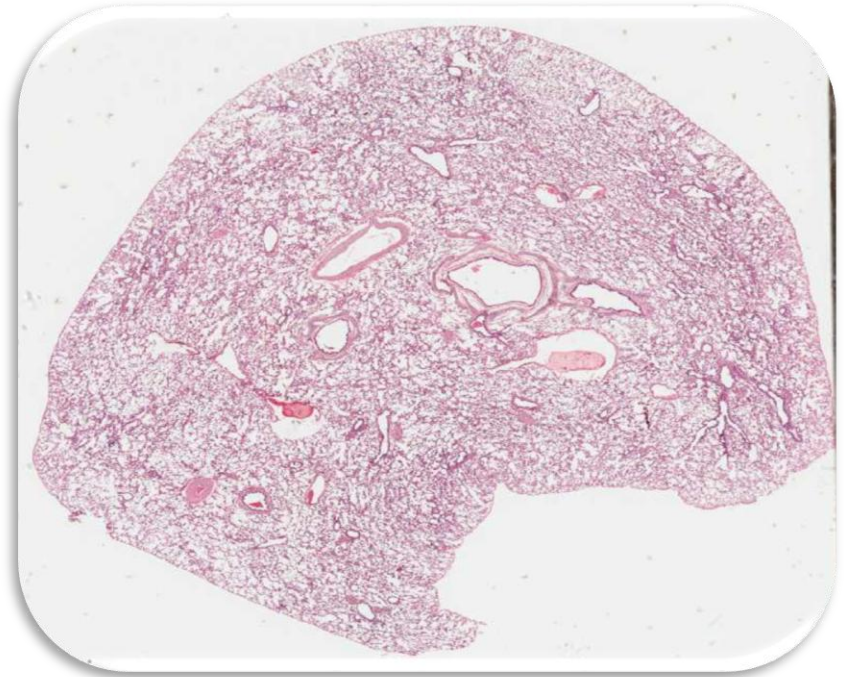
TRACHEAL MUCOSA

- Pseudo-stratified ciliated columnar epithelium with goblet cells
- Submucosa.



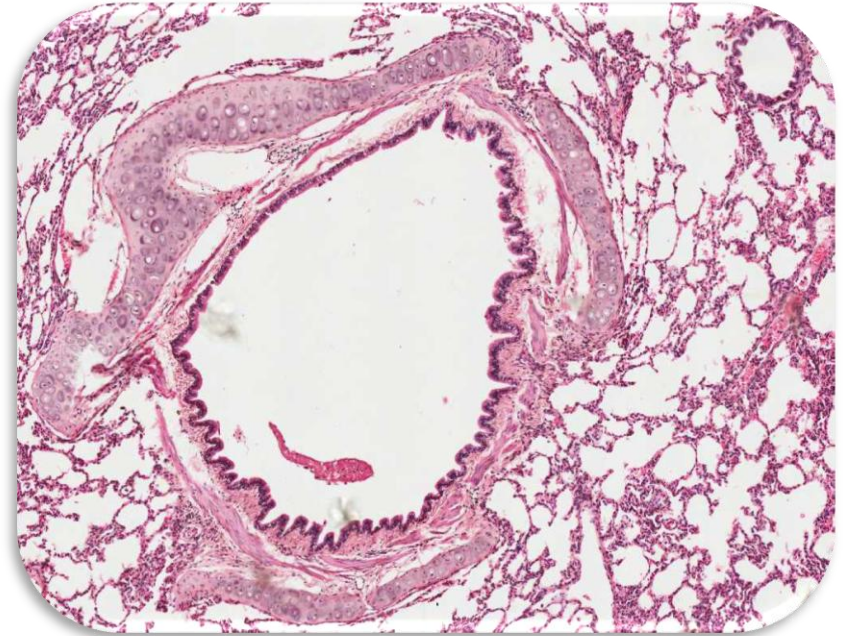
LUNG

- Intrapulmonary bronchus
- Bronchioles
- Pulmonary alveoli



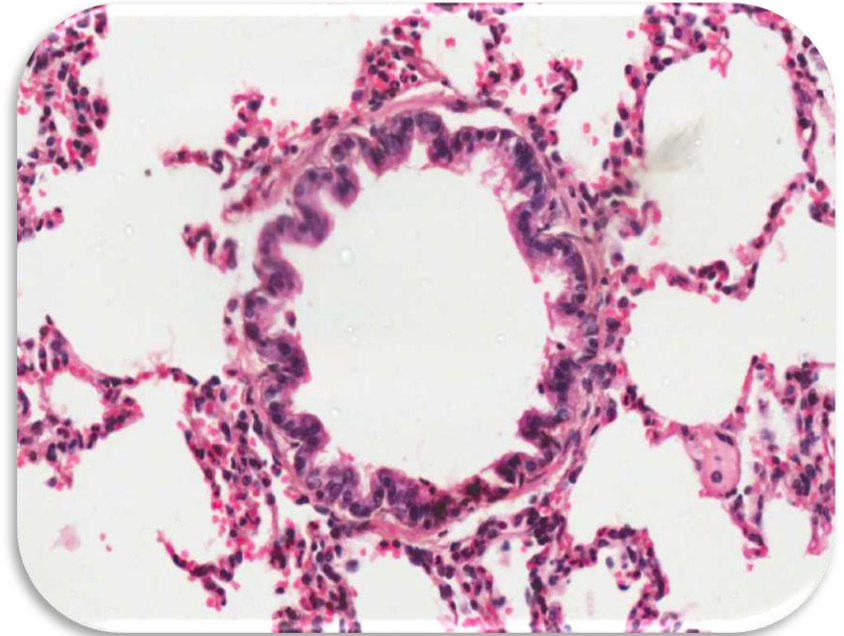
INTRAPULMONARY BRONCHUS

- Pseudo-stratified ciliated columnar epithelium with goblet cells
- Hyaline cartilage.

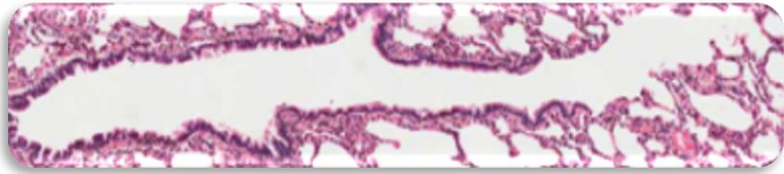


TERMINAL BRONCHIOLE (TS)

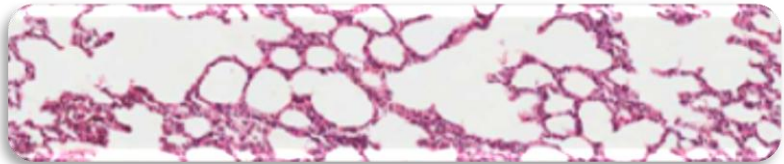
- Simple cuboidal partially ciliated epithelium
With Clara cells.



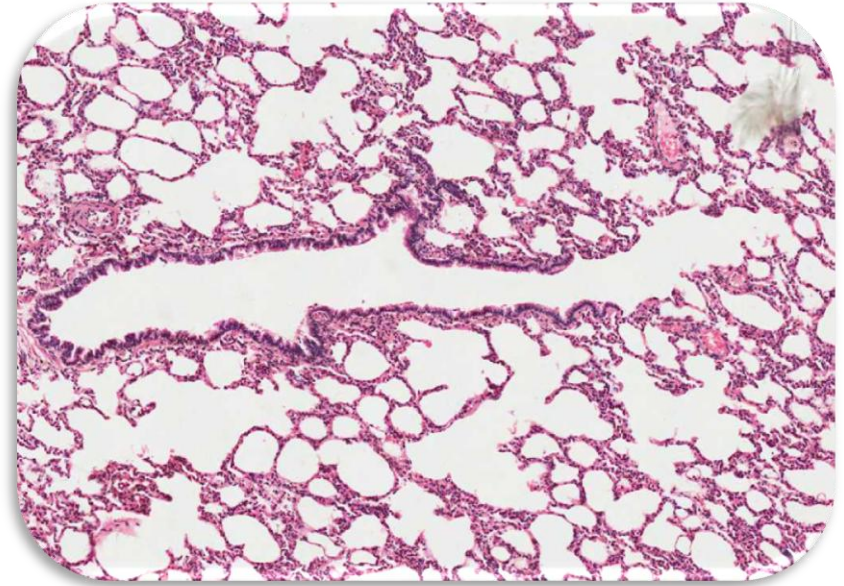
LUNG – BRONCHIOLE (LS)



BRONCHIOLE (LS)



PULMONARY ALVEOLI

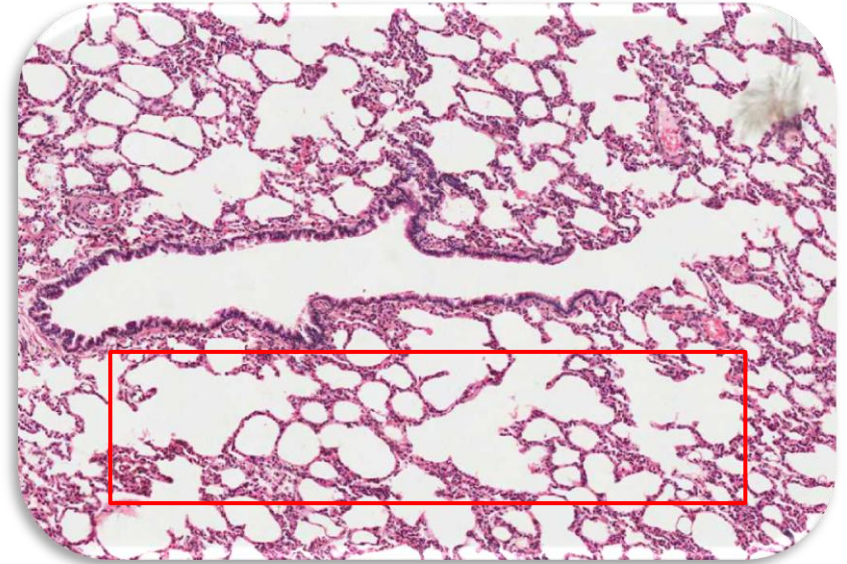


LUNG

PULMONARY ALVEOLI

- Type of epithelium:
 - Simple squamous epithelium

- Type of cells:
 - Type I Pneumocytes
 - Type II Pneumocytes



Work Done By:

Faris Alharbi

