



HISTOLOGY PRACTICAL REVISION

CARDIOVASCULAR BLOCK



@HISTO433

Histology.team@gmail.com

Wall of the Heart

Features:

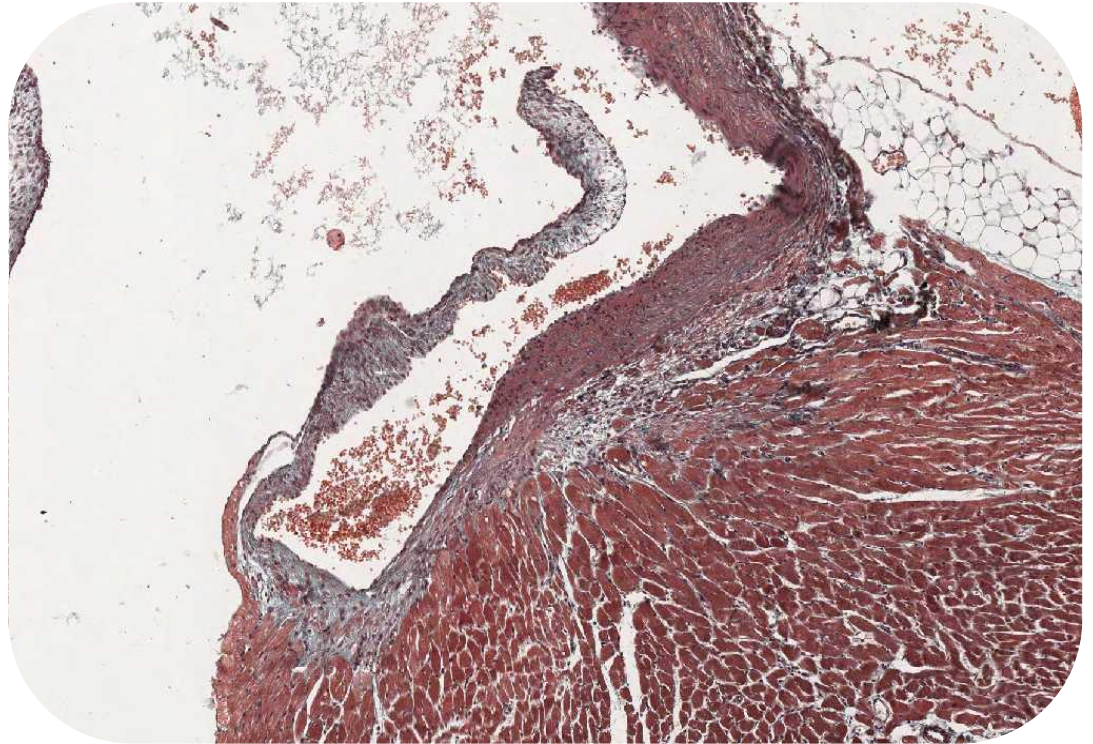
- Cusp of Valve
- Endocardium



Cardiac Valve

Features:

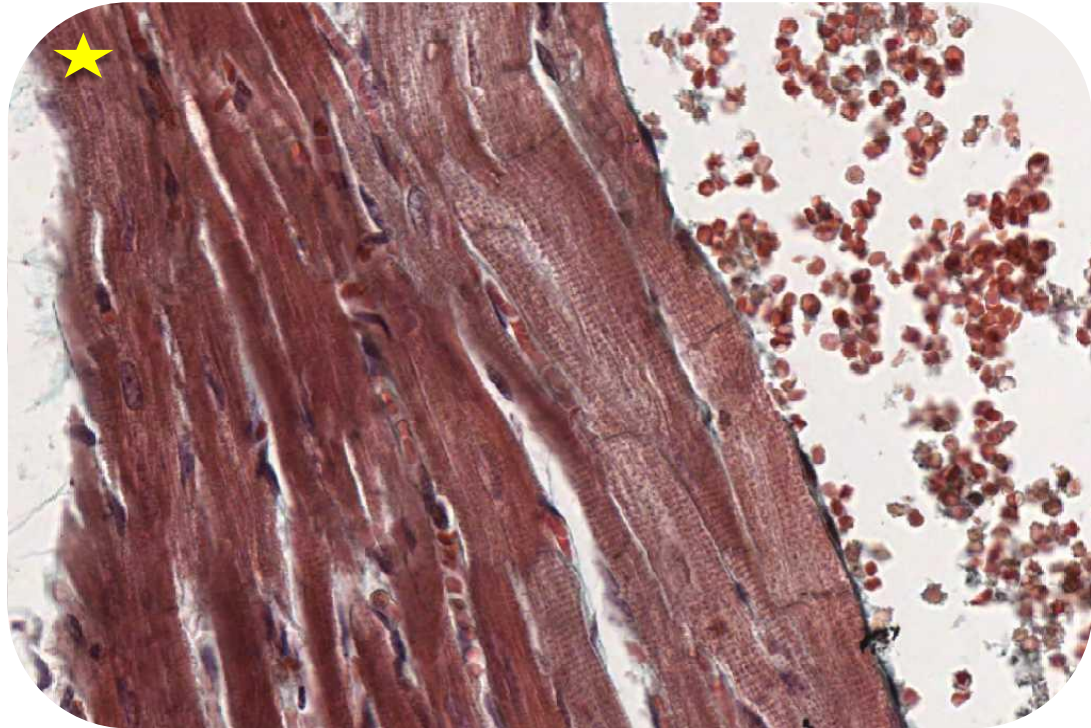
- Wall of heart
- Myocardium
- Cusp of [Valve](#)



Endocardium and Myocardium

Features:

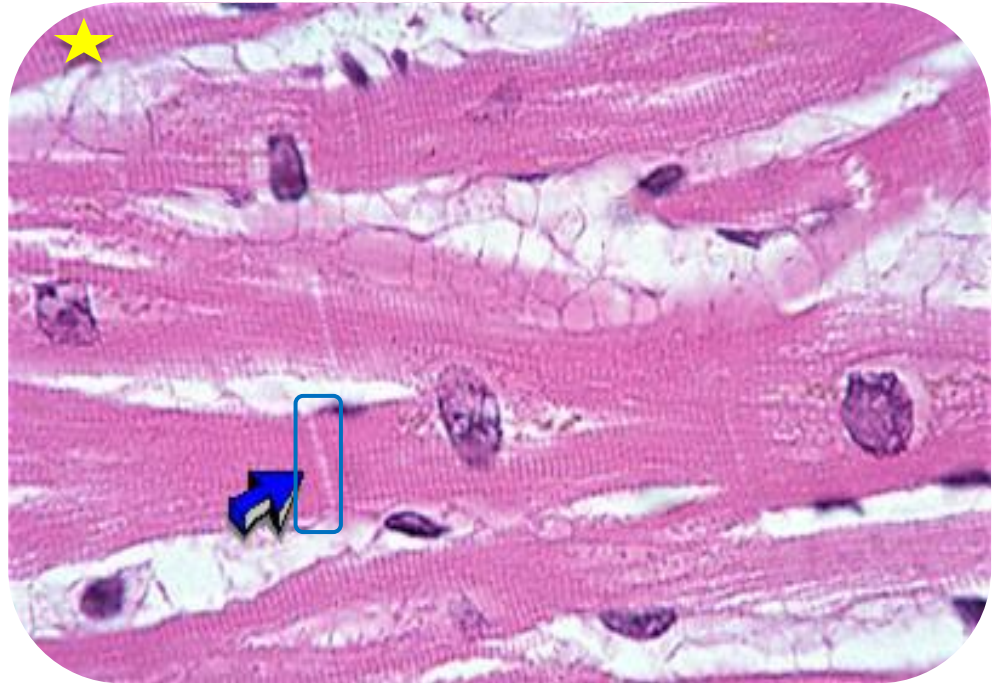
- Endocardium (inner layer)
- Myocardium (middle layer)



Myocardium

Features:

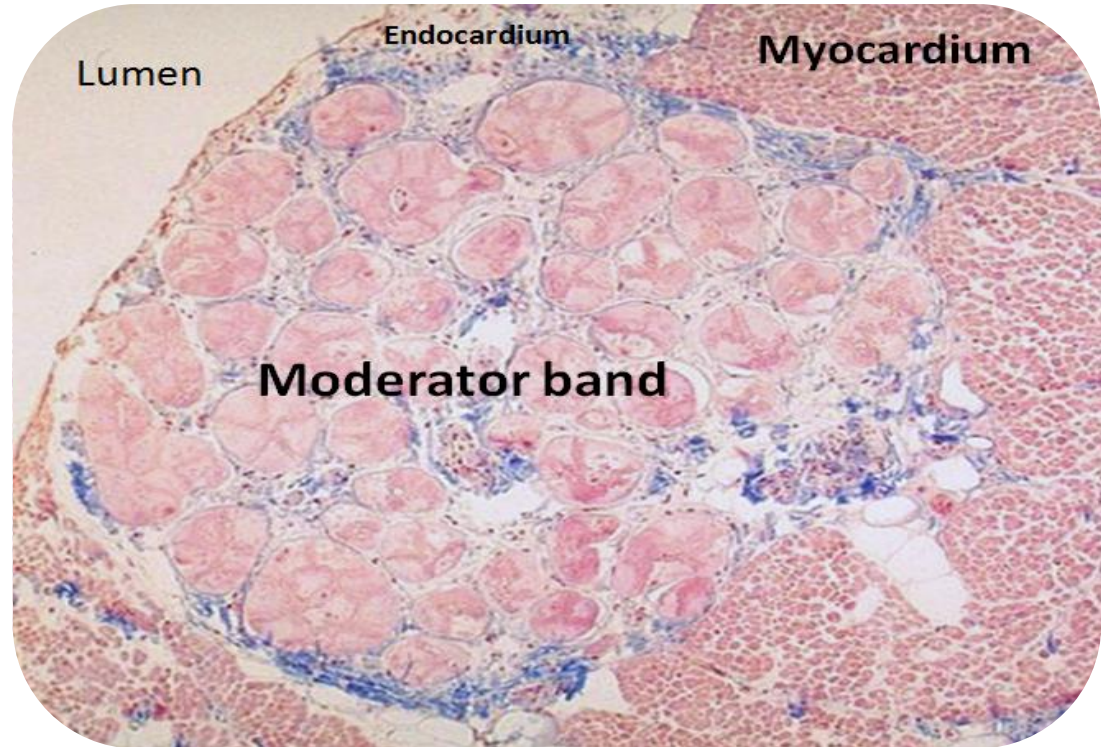
- Intercalated discs
- Transverse and Branched



Moderator Band

Features:

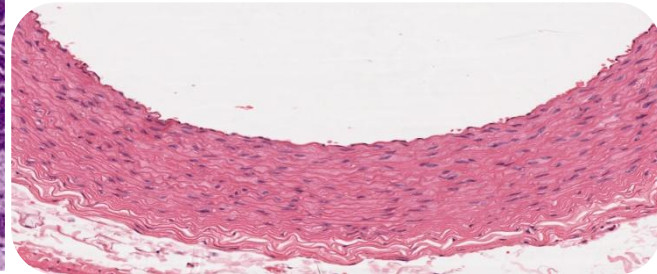
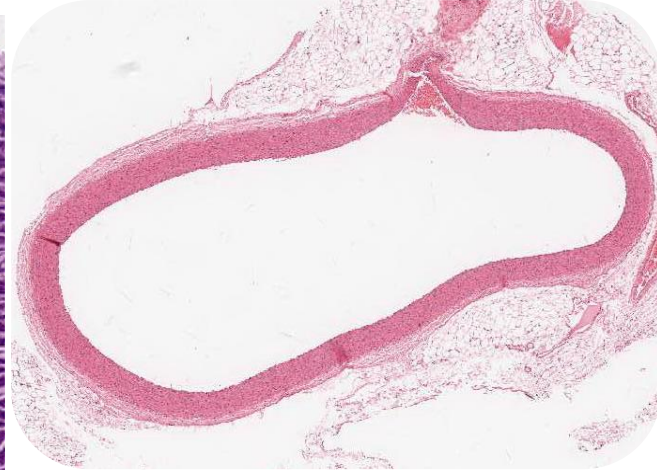
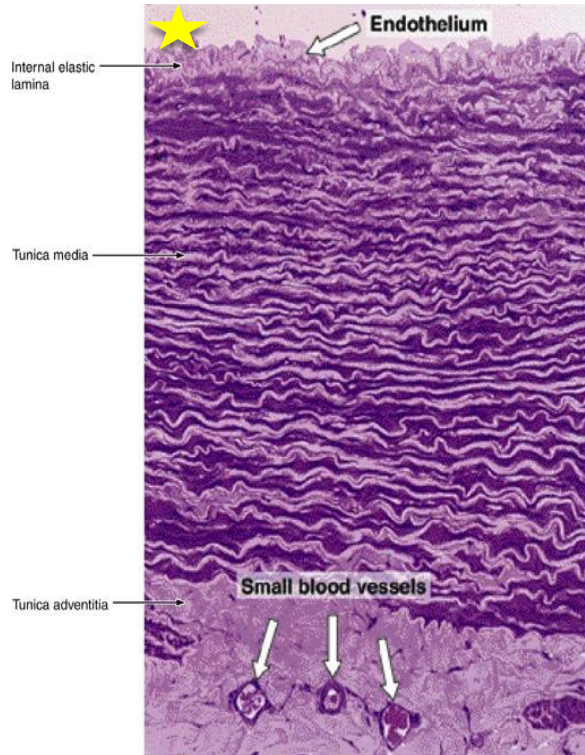
- Purkinje Fibers



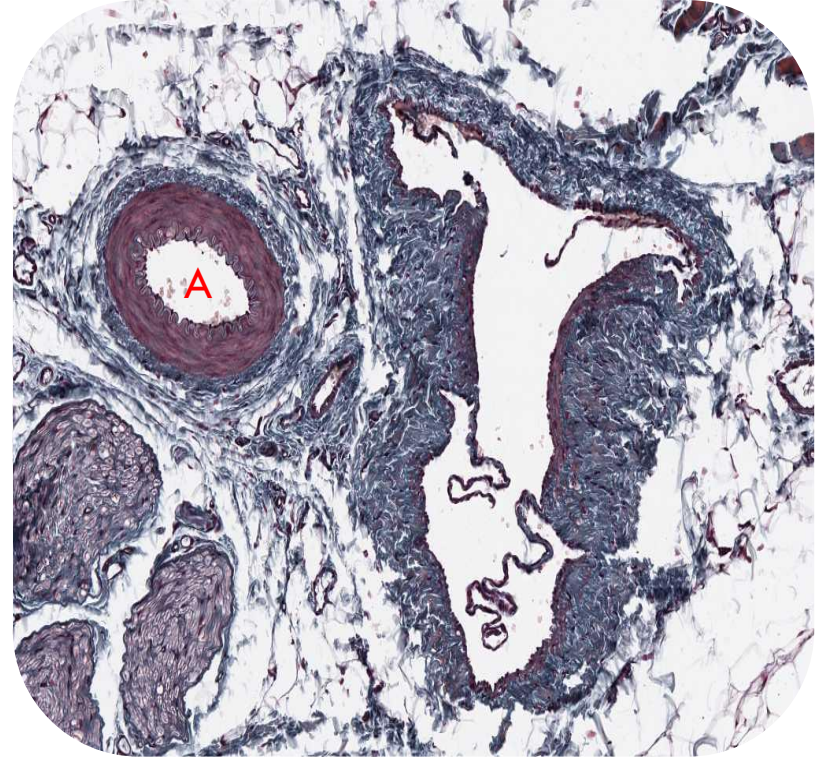
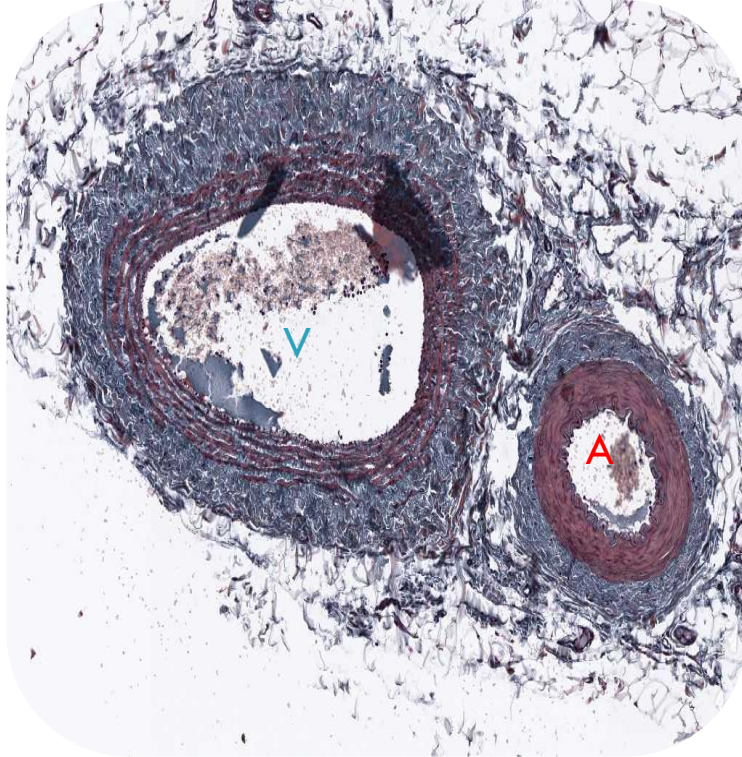
Aorta (ELASTIC ARTERIES)

Features:

- Endothelium
- Fenestrated elastic lamellae (membrane)
- Vasa vasorum



Medium-Sized Artery and Vein

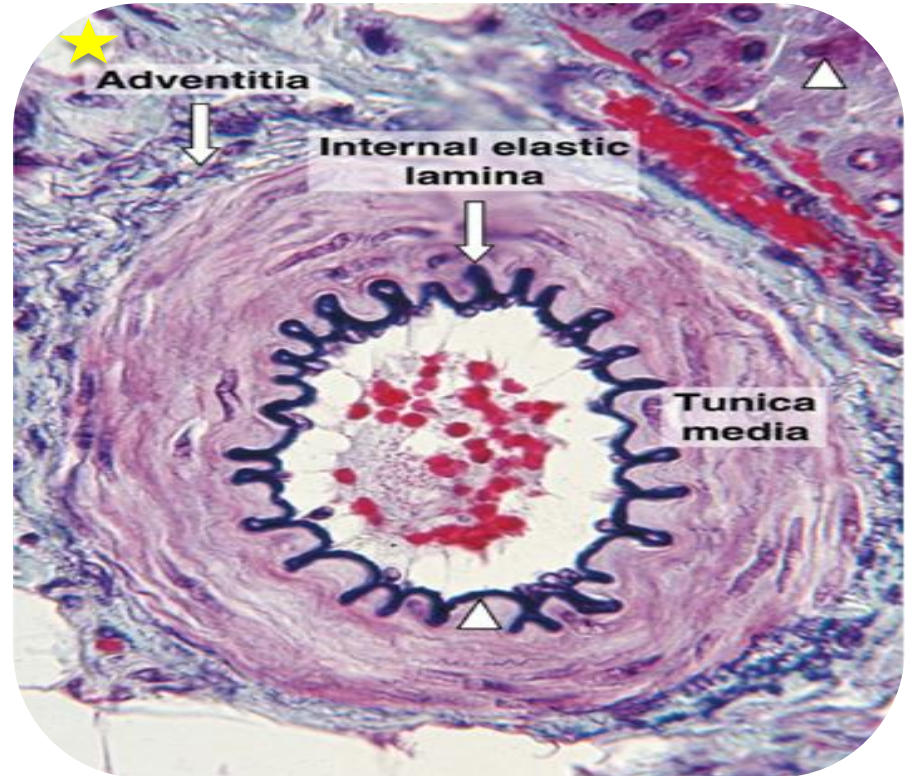


A: Artery
V: Vein

Medium-Sized Artery

Features:

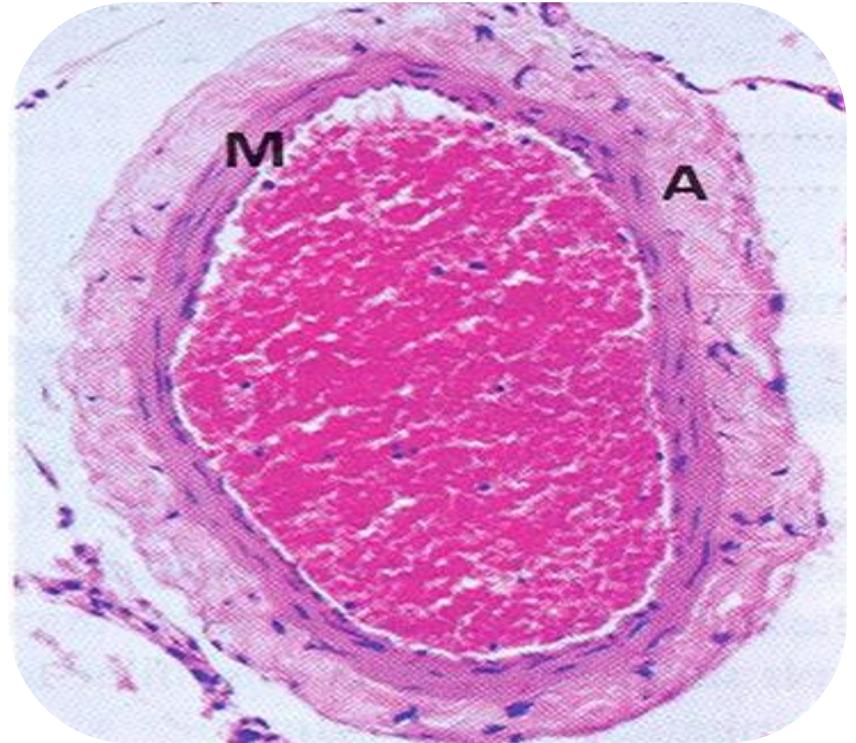
- **Internal elastic lamina**
- T.Media **thicker or similar** to T.Adventitia



Medium-Sized Vein

Features:

- T.Media **smaller** than T.Adventitia



Fenestrated Blood Capillary

Features:

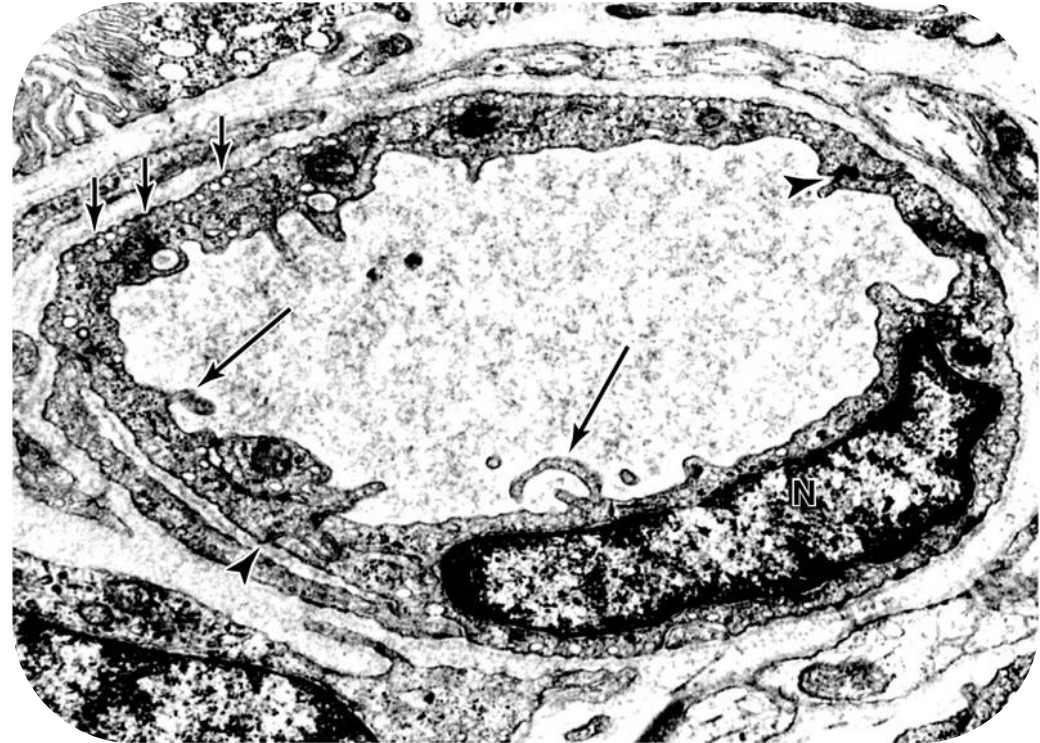
- EM of Fenestrated Blood Capillary **with diaphragm**
- Eg: - intestine
 - pancreas
 - endocrine glands



Continuous Blood Capillary

Features:

- EM of **Continuous** Blood Capillary
- Eg: - Muscle
- interalveolar septum



Work Done By:

Faris Alharbi

