



HISTOLOGY PRACTICAL REVISION

RENAL BLOCK



@HISTO433

Histology.team@gmail.com

CORTEX OF KIDNEY

Structures:

- 1- Proximal convoluted tubule (4-6)
- 2- Distal convoluted tubule (6-8)
- 3- Renal corpuscle
- 4- Collecting tubules (sometimes)



• Glomerulus

• Parietal layer of Bowman's capsule

• Number of cells

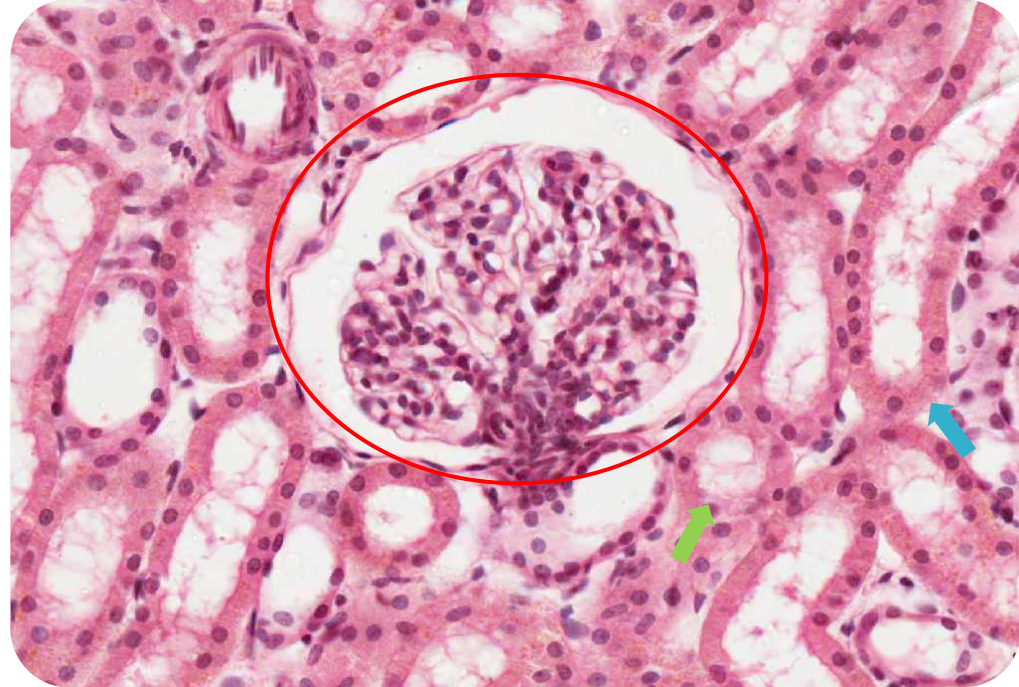
RENAL CORPUSCLE

Structures:

- 1-Glomerulus (fenestrated capillaries "without diaphragm")
- 2-Bowman's capsule (Parietal layer, visceral layer)
- 3-Mesangial cells

Cells:

- Mesangial cells
- Glomeruli
- Podocytes



- Renal corpuscle
- PCT DCT

URETER

Structure (3 layers):

1-Mucosa:

transitional epithelium, lamina propria

2-Muscularis (muscular coat):

two layers of smooth muscle in upper 2/3:

A- Inner longitudinal.

B- Outer circular.

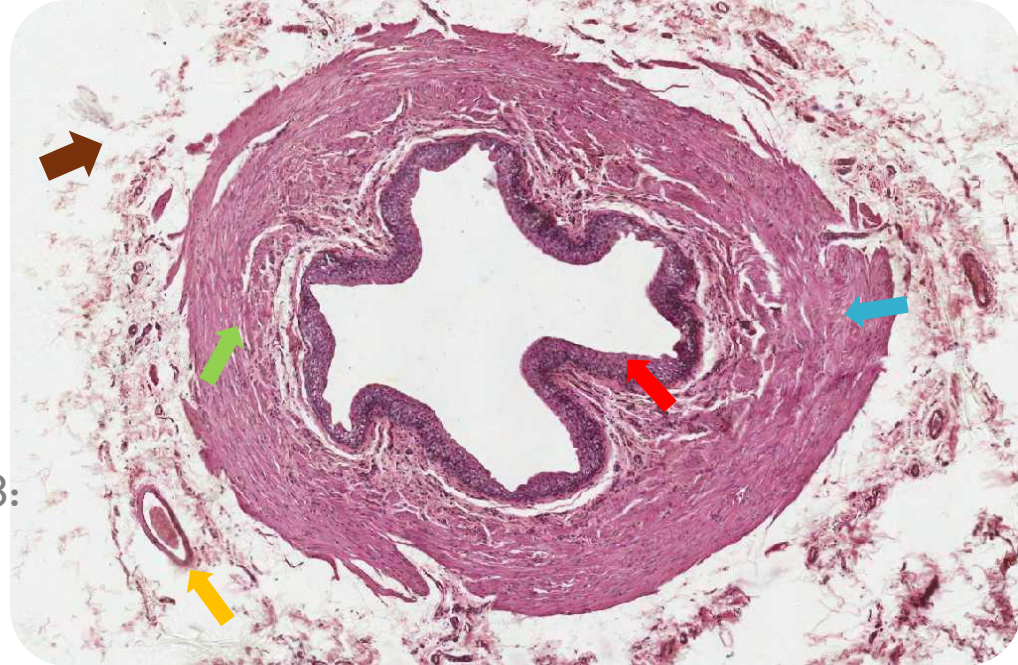
three layers of smooth muscle in lower 1/3:

A- Inner longitudinal.

B- Middle circular.

C- Outer longitudinal.

3-Adventitia (No serosa.)



• Transitional Epithelium

• Inner longitudinal layer

• Outer circular layer

• Blood vessels

• Adventitia

URINARY BLADDER (upper section)

Structure (3 layers):

1-Mucosa:

transitional epithelium, lamina propria

2-Muscularis (muscular coat):

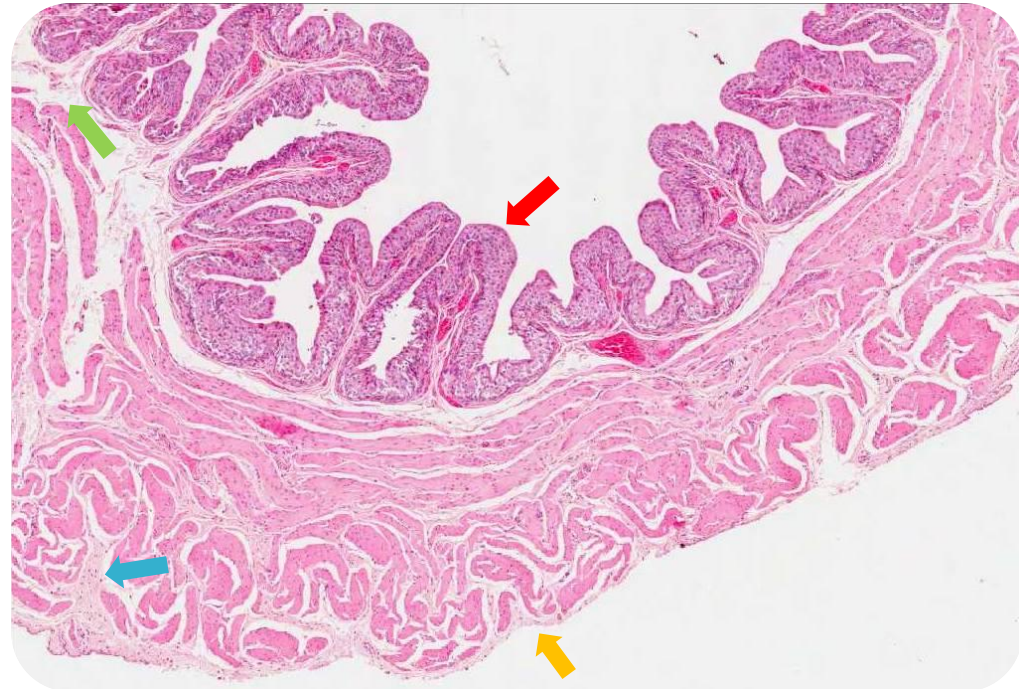
three layers of smooth muscle

A- Inner longitudinal .

B- Middle circular.

C- Outer longitudinal.

3-Adventitia (serosa)



• Transitional Epithelium

• lamina propria

• Connective tissue

• Mesothelium

Work Done By:

Faris Alharbi

Abdulaziz Alsudairi

