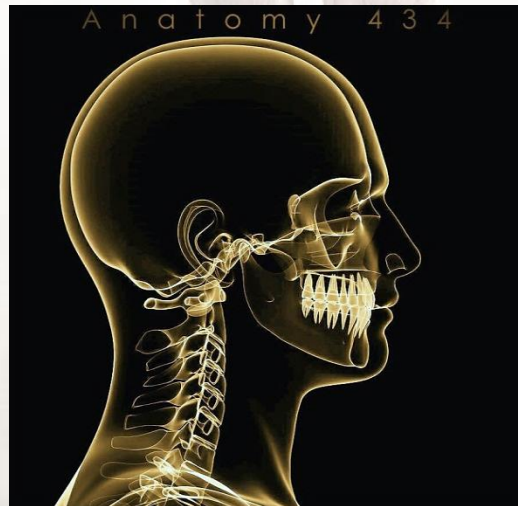


Anatomy OSPE Revision

by: Prof. Saeed Abu Elmakarem



Before you begin

The background features a semi-transparent anatomical illustration of a human figure from the back, showing the spine and muscles. To the right, there is a faint image of a human brain with neural pathways.

- Make sure you understand the difference between the terms **NAME** & **TYPE** which have completely different answers.
- Make sure your **SPELLING** is correct or relatively similar to ensure your grade on each question.
- **Note: Answers are in RED**
- **In GREEN you might find some helpful notes**

Case 1

Identify the following:

- Joint name:

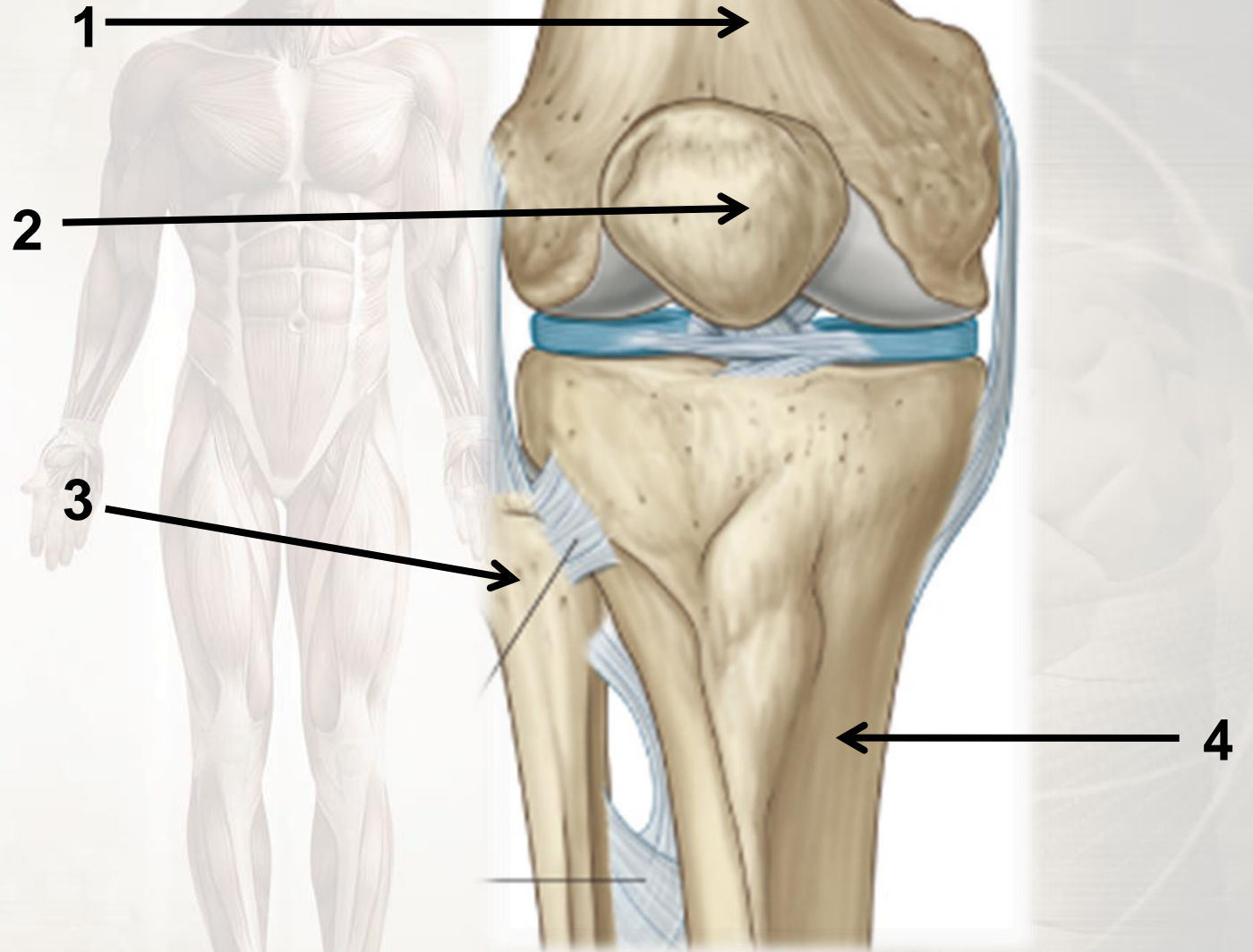
- The labeled bones:

1-

2-

3-

4-

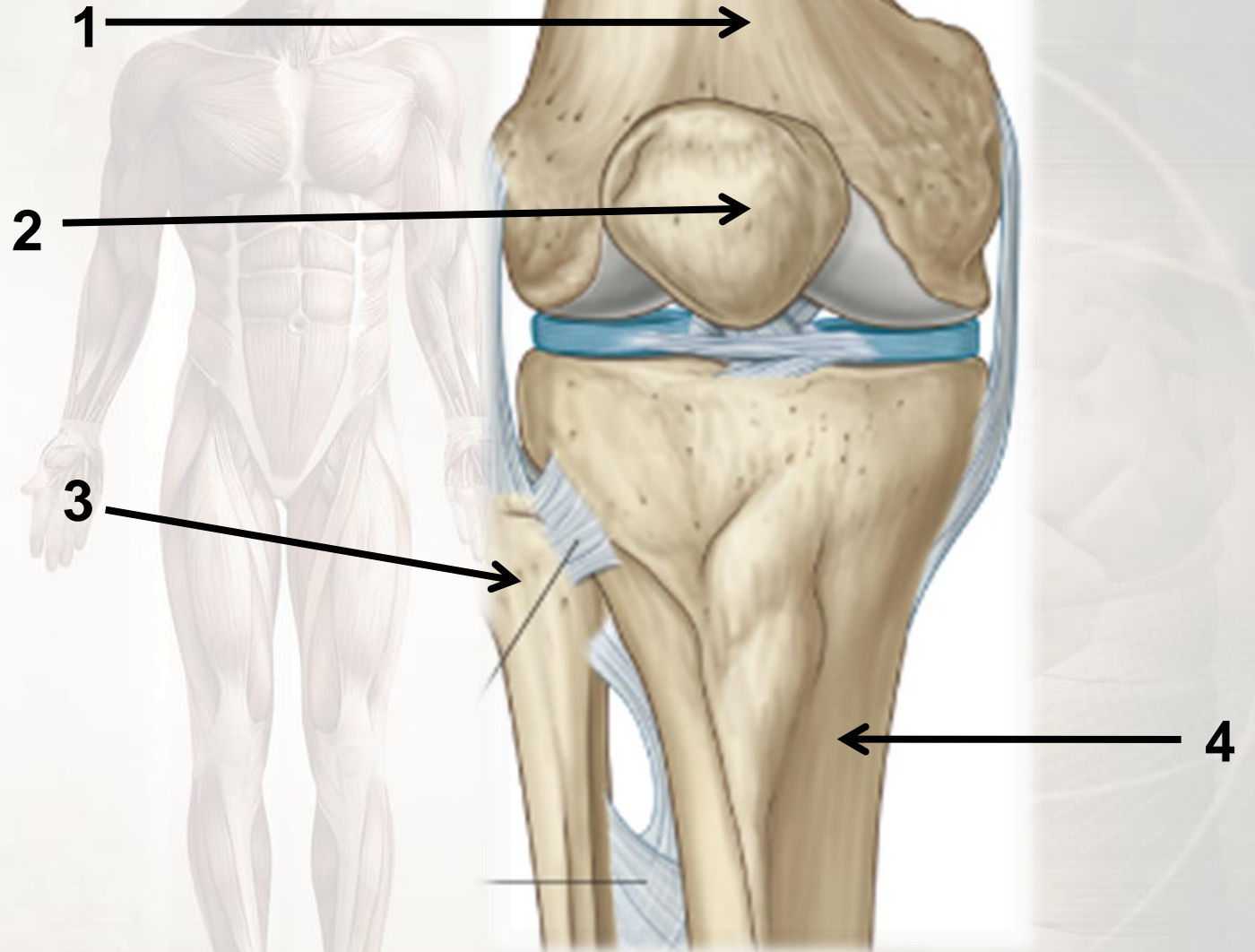


Case 1

Identify the following:

- Joint name: **Knee joint** (**Right leg**)
- The labeled bones:
 - 1- **Femur**
 - 2- **Patella**
 - 3- **Fibula** (lateral)
 - 4- **Tibia** (medial)

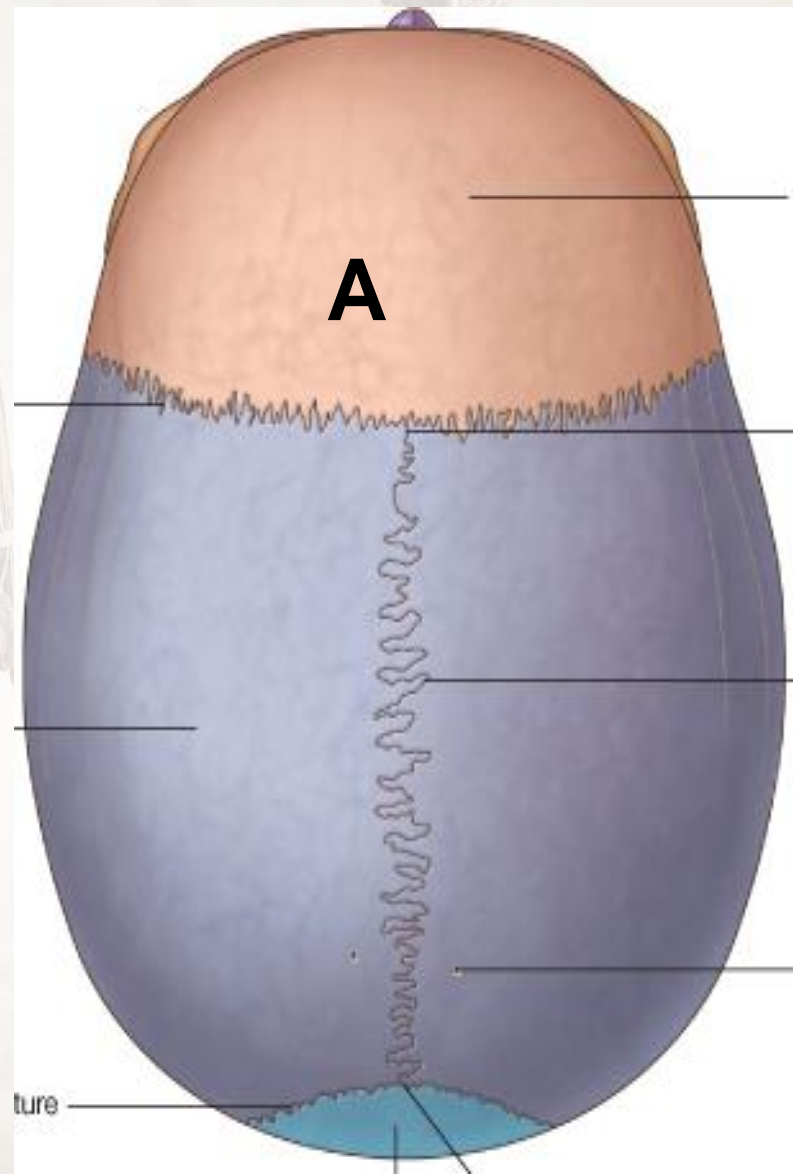
* **Tibia** is bigger than fibula



Case 2

Identify:

The type of the bone marked A :



Case 2

Identify:

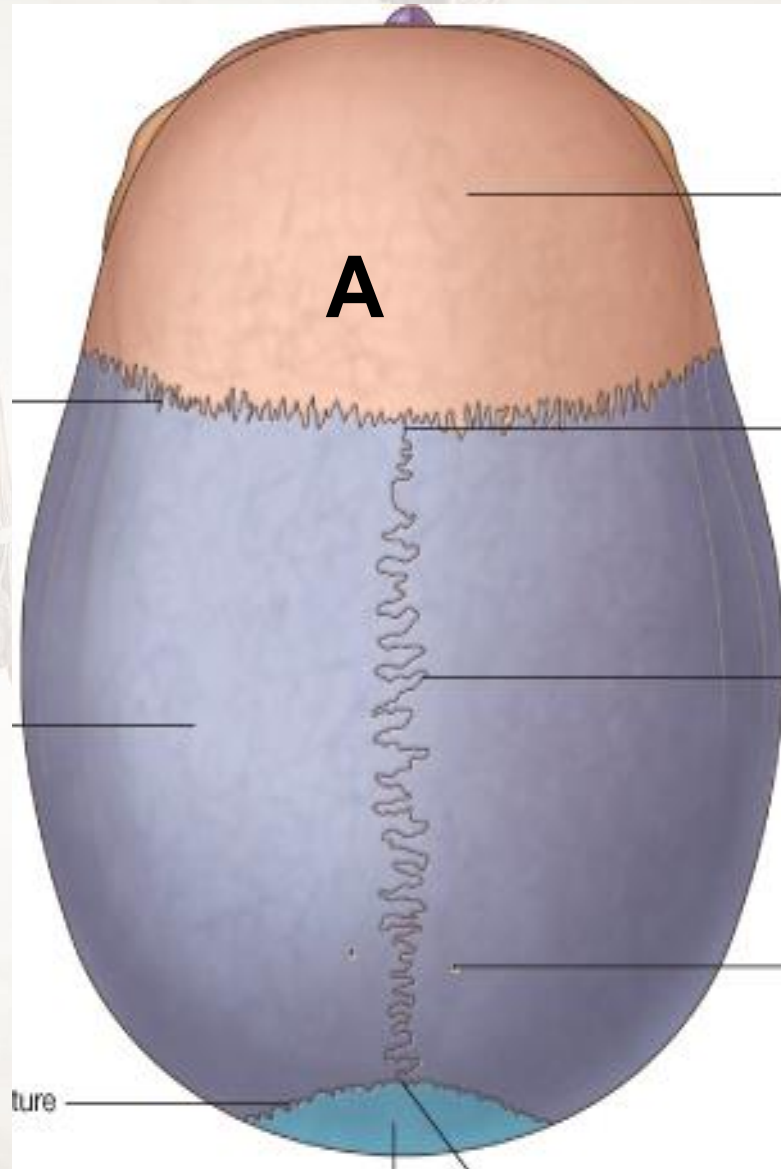
The type of the bone marked A :

Flat bone

Remember:

Types of bones:

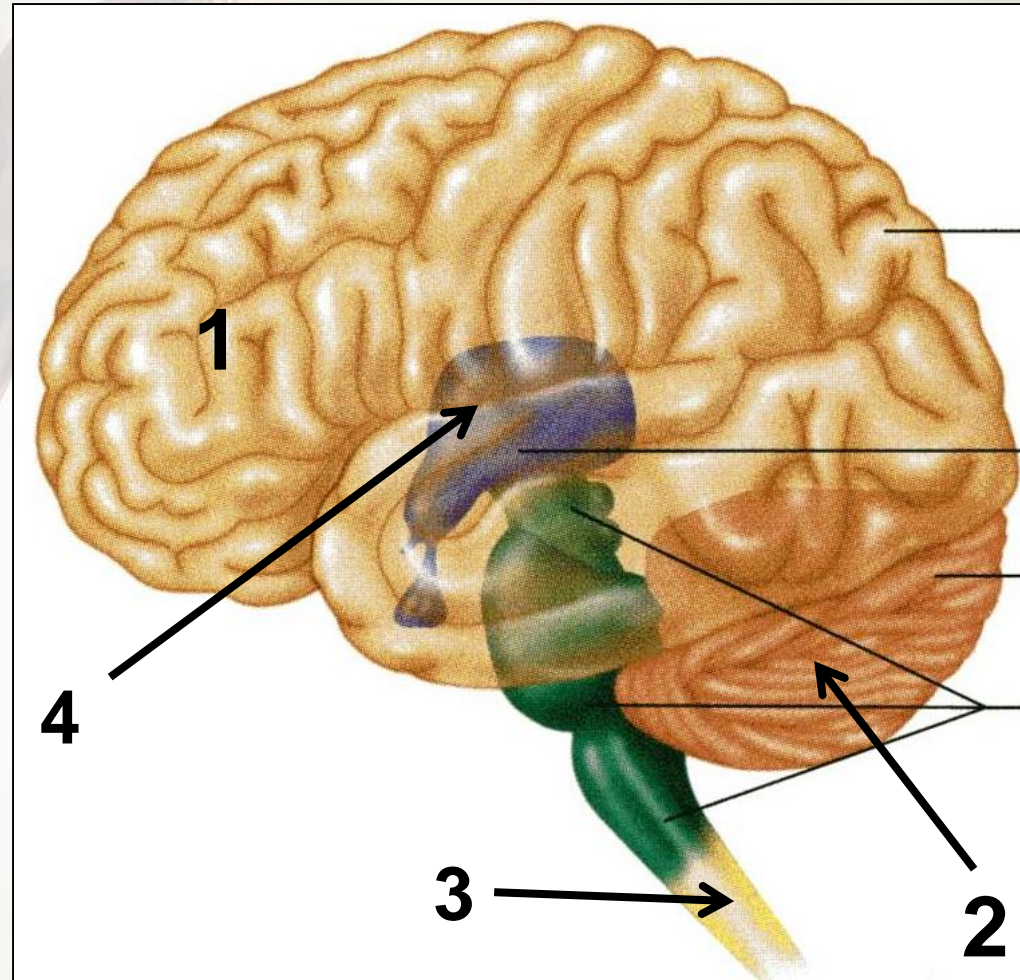
- Flat
- Irregular
- Long
- Short



Case 3

Identify the labeled structures:

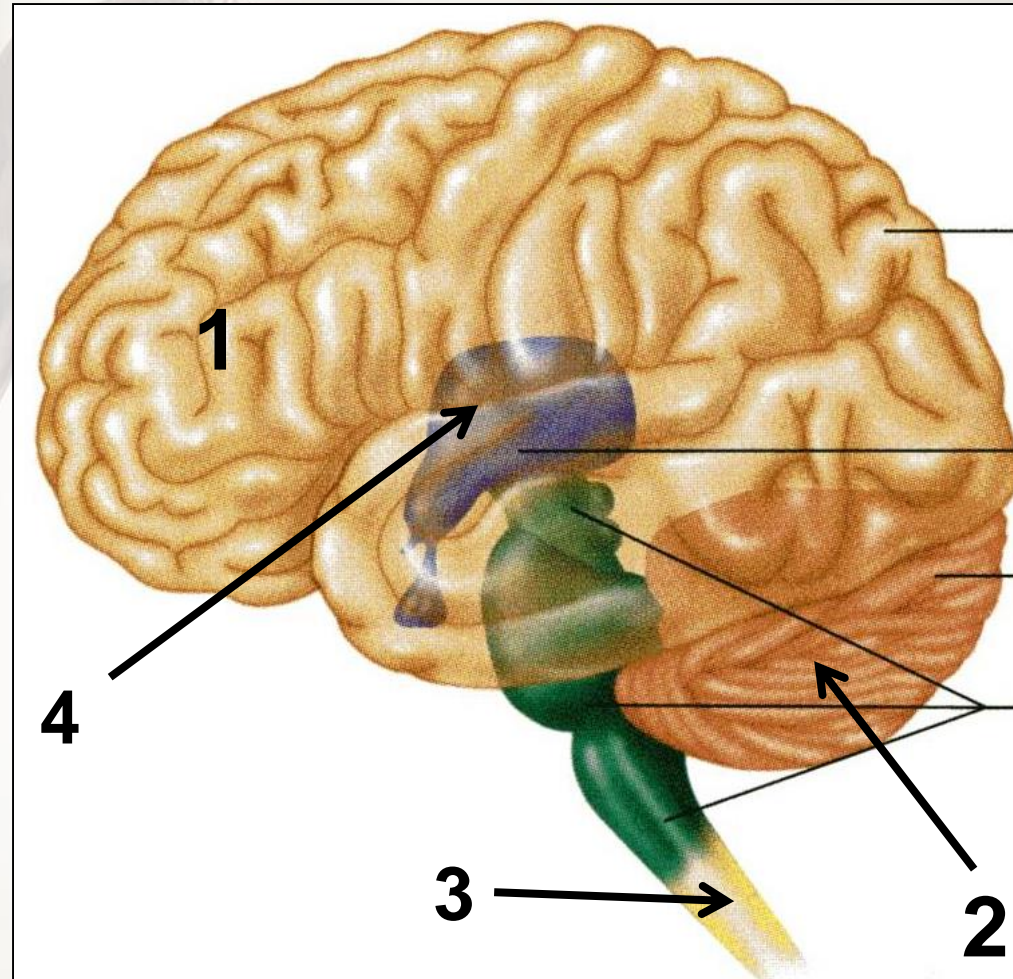
- 1.
- 2.
- 3.
- 4.



Case 3

Identify the labeled structures:

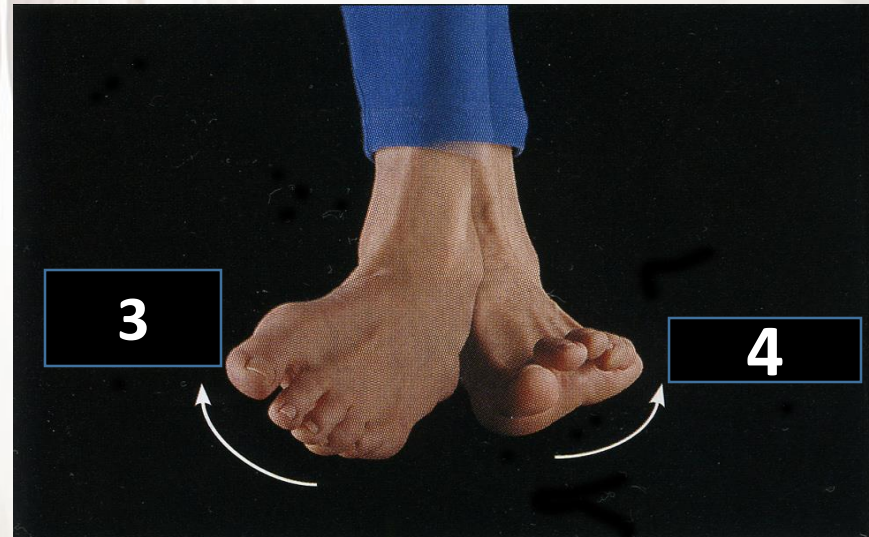
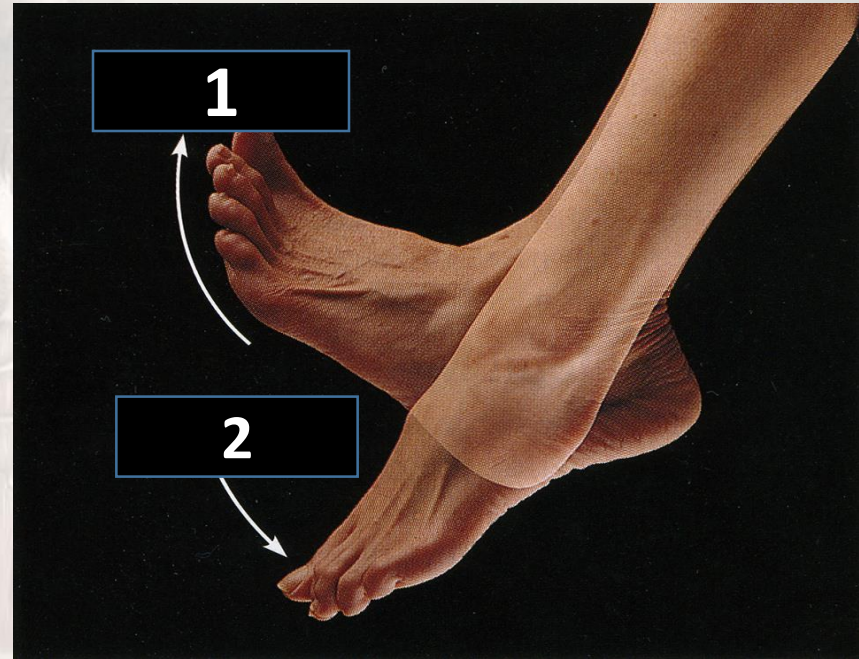
1. **Cerebrum**
2. **Cerebellum**
3. **Spinal cord**
4. **Diencephalon**



Case 4

Identify these movements:

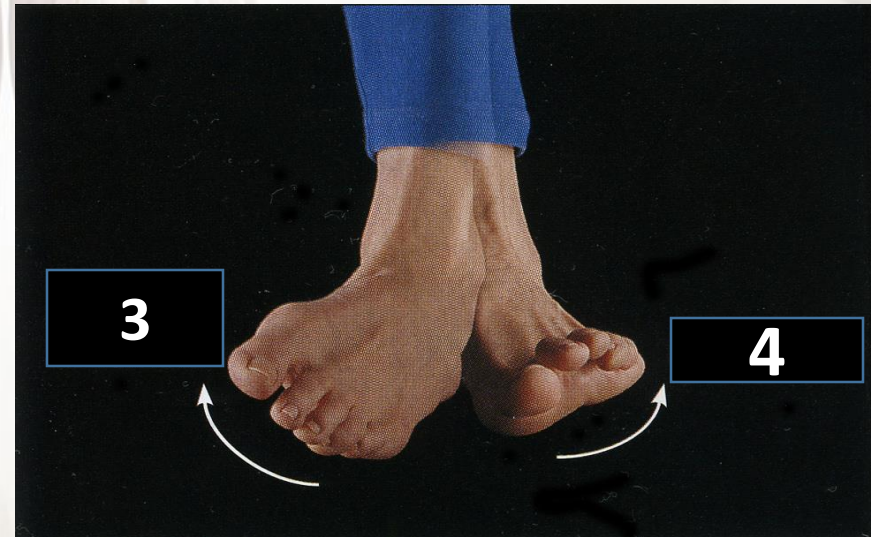
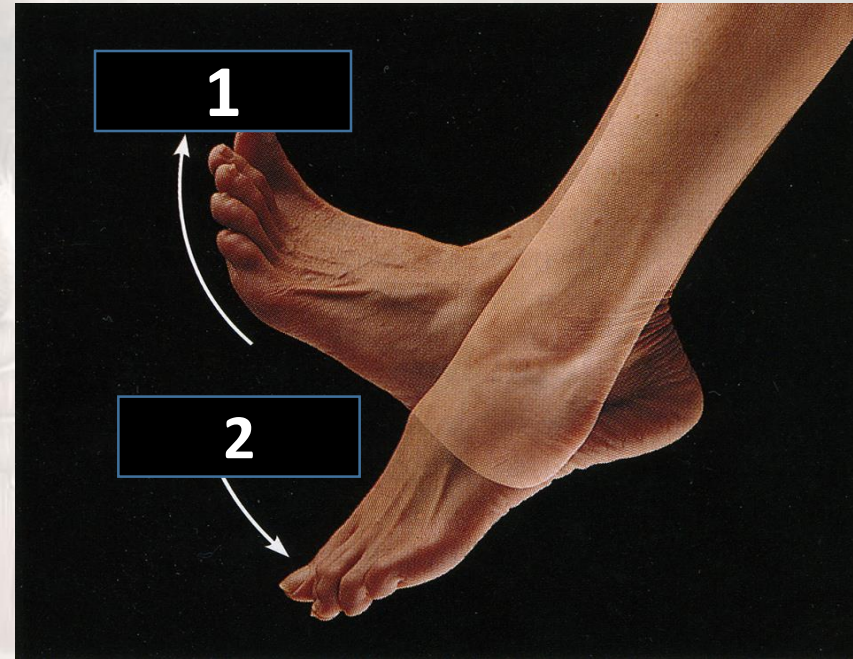
- 1.
- 2.
- 3.
- 4.



Case 4

Identify these movements:

1. **Dorsiflexion** (ترفع رجلك عن البنزين)
2. **Plantarflexion** (فرامل)
3. **Inversion** (Inversion ; inwards)
4. **Eversion** (Outwards)

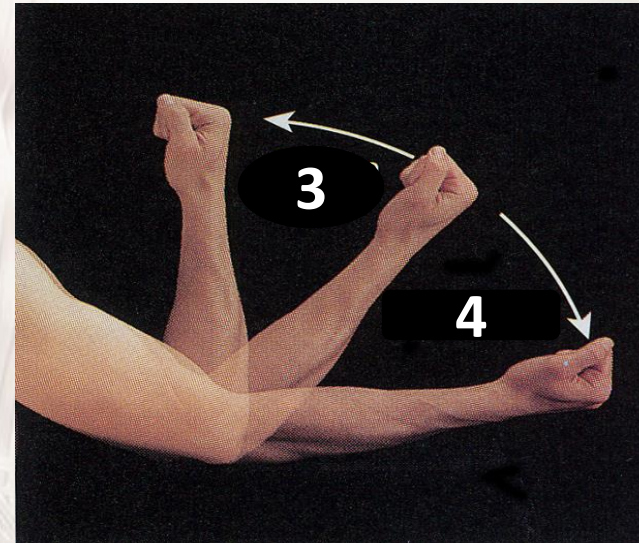
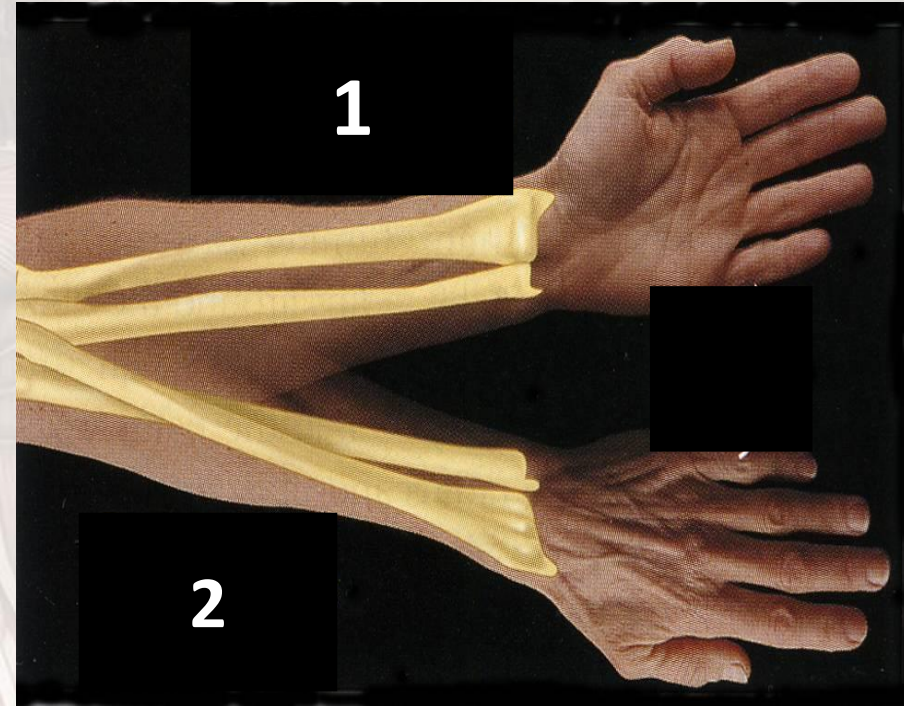


Case 5

Identify these movements:

- 1.
- 2.
- 3.
- 4.

Identify the lateral bone in figure 1



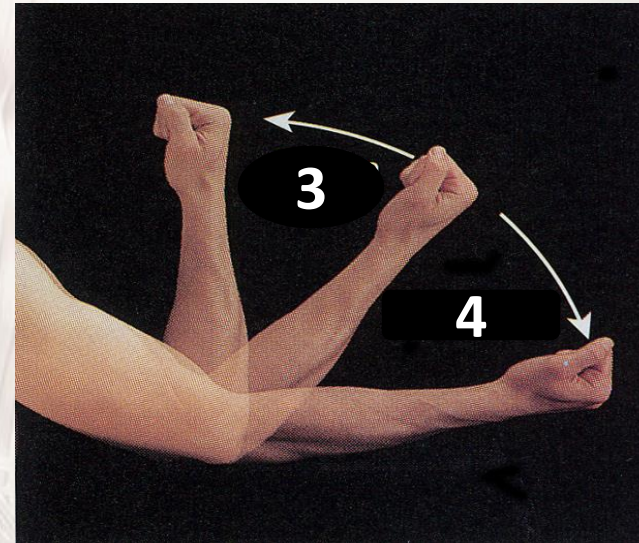
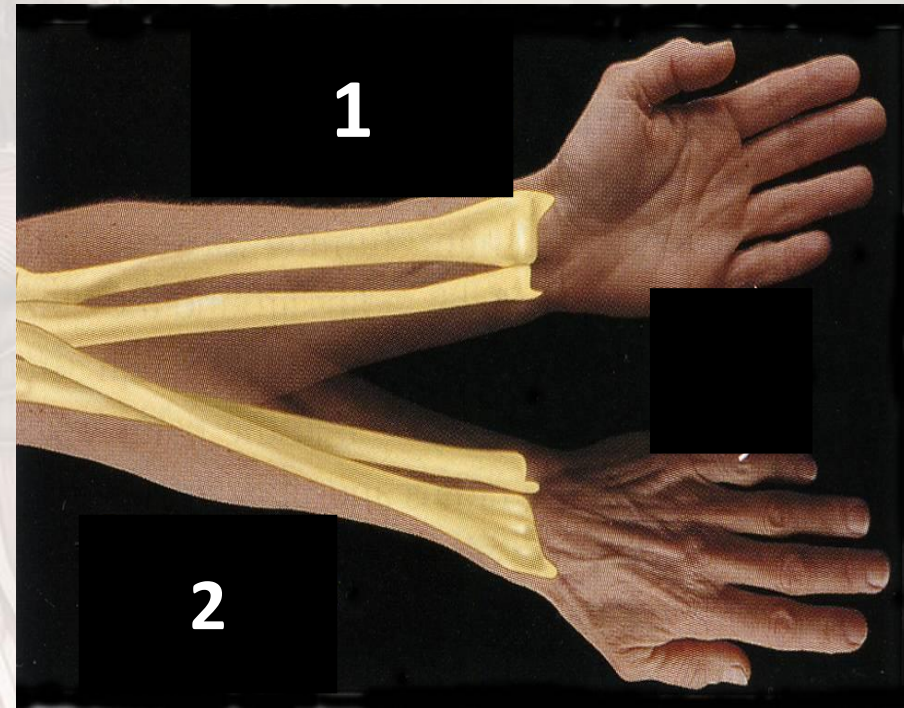
Case 5

Identify these movements:

1. **Supination** « سبحان الله »
2. **Pronation**
3. **Flexion**
4. **Extension**

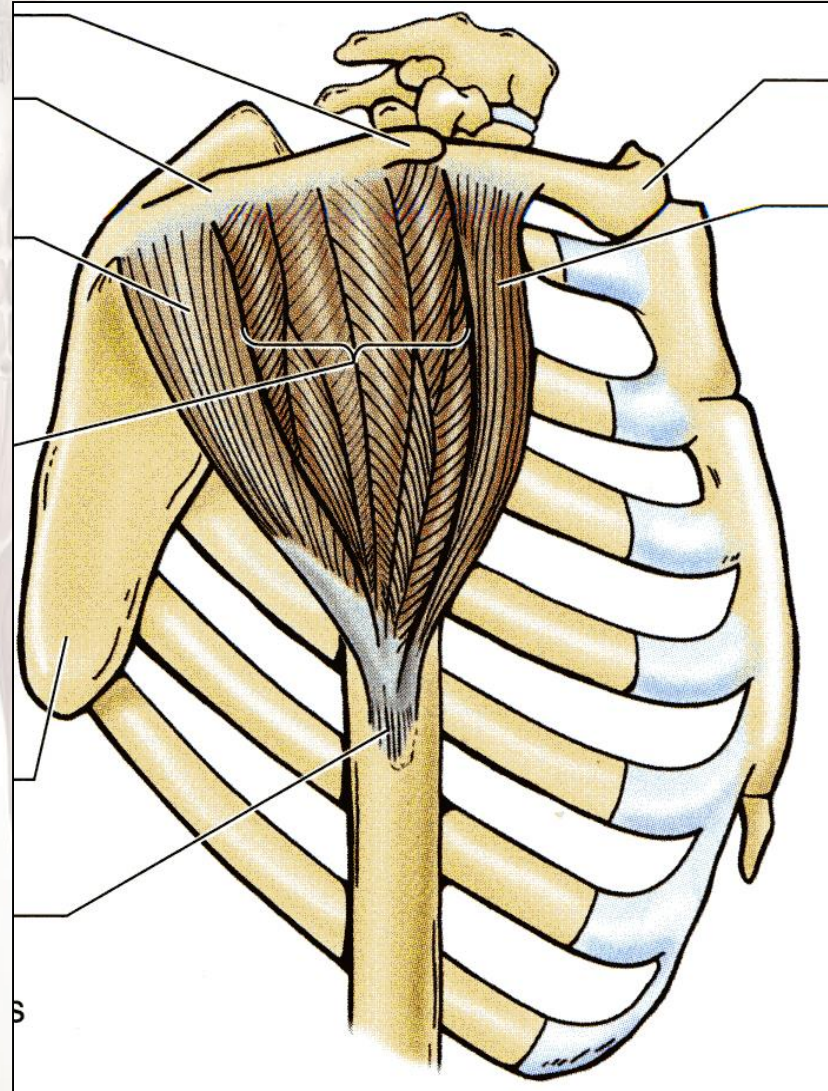
Identify the lateral bone in figure 1:

Radius



Case 6

Identify the type of this skeletal muscle:



Case 6

Identify the type of this skeletal muscle:

Multipennate

Remember:

Types of skeletal muscles :

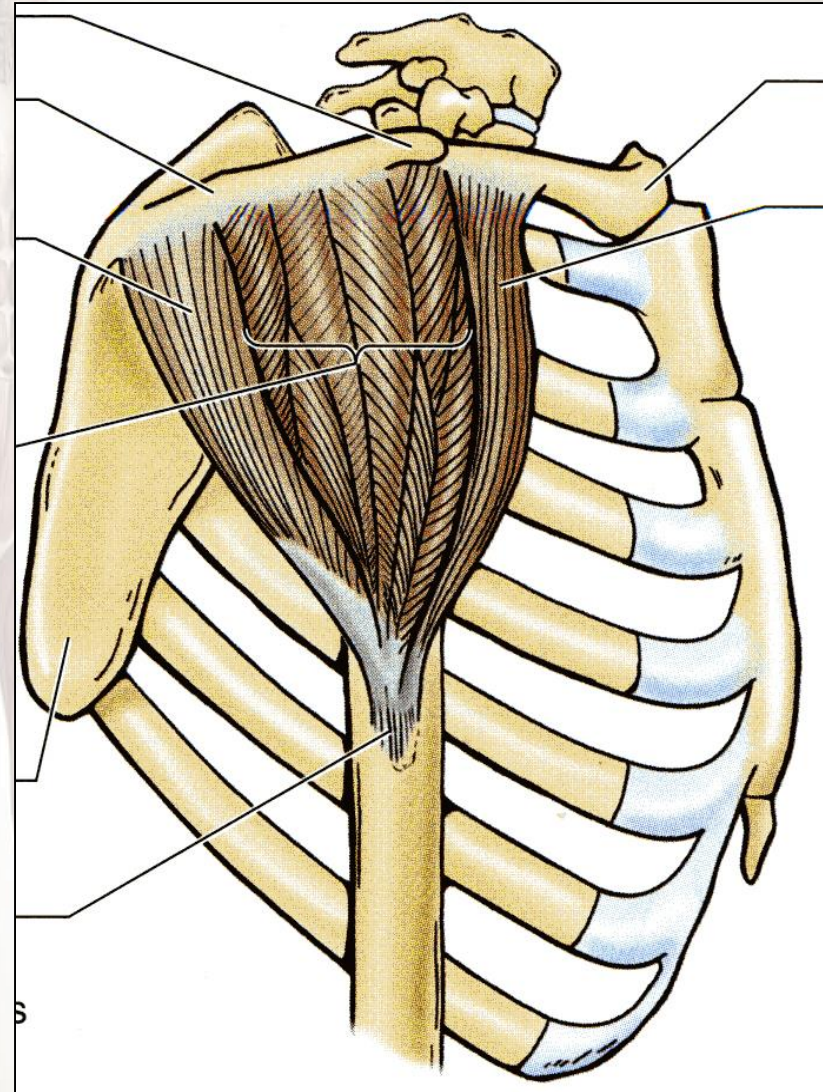
1- Parallel

2- pennate

- **Unipennate**

- **Bipennate**

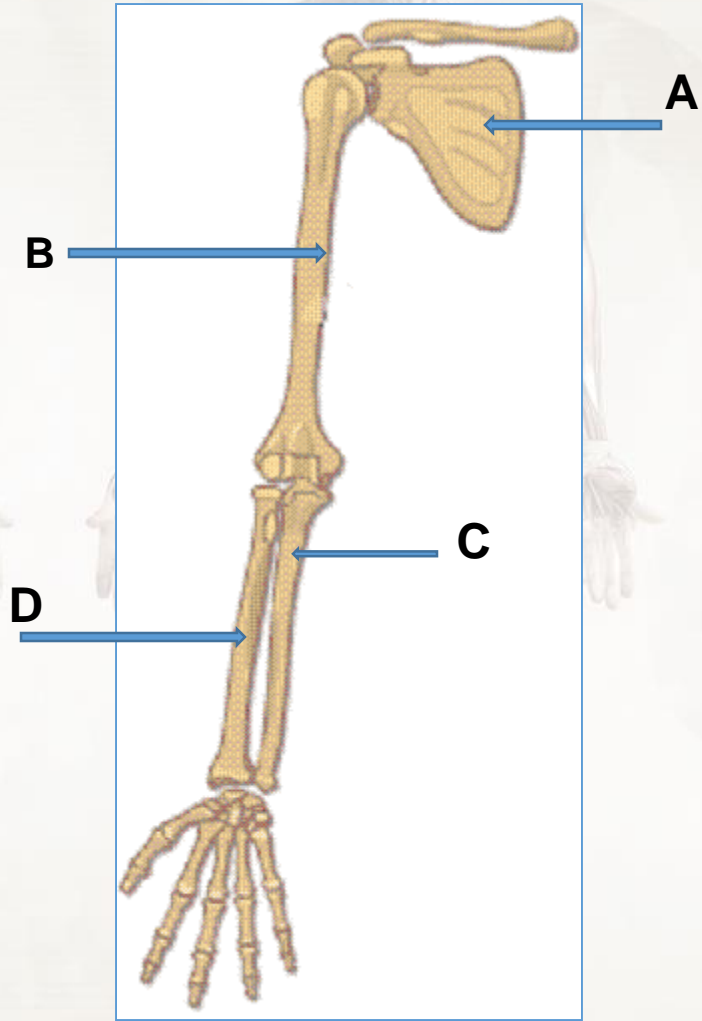
- **Multipennate**



Case 7

Identify:

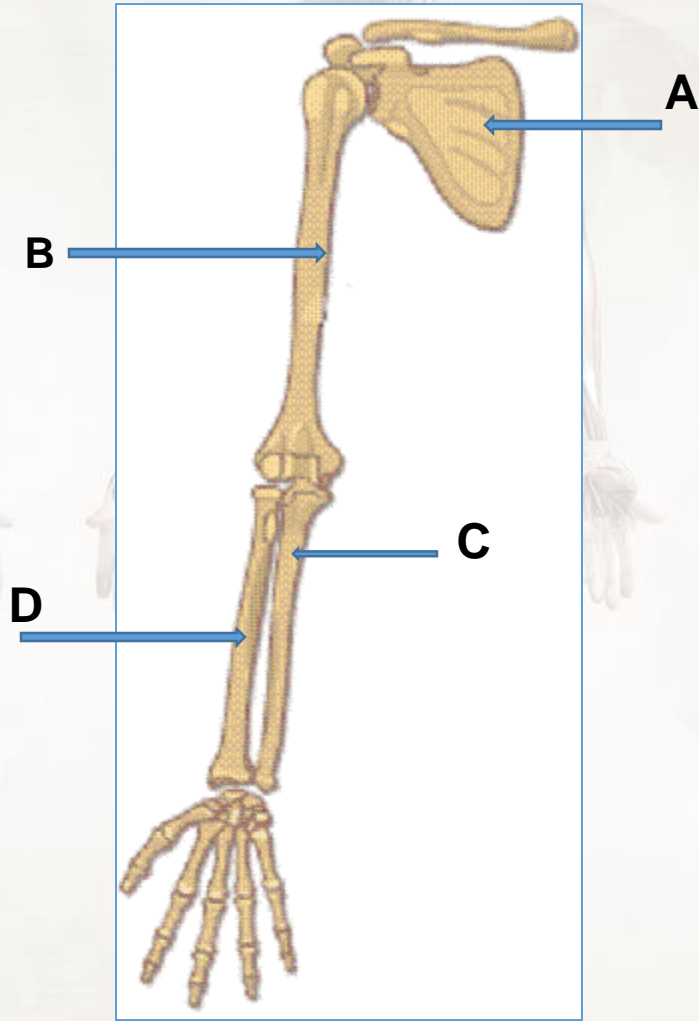
- A.
- B.
- C.
- D.



Case 7

Identify:

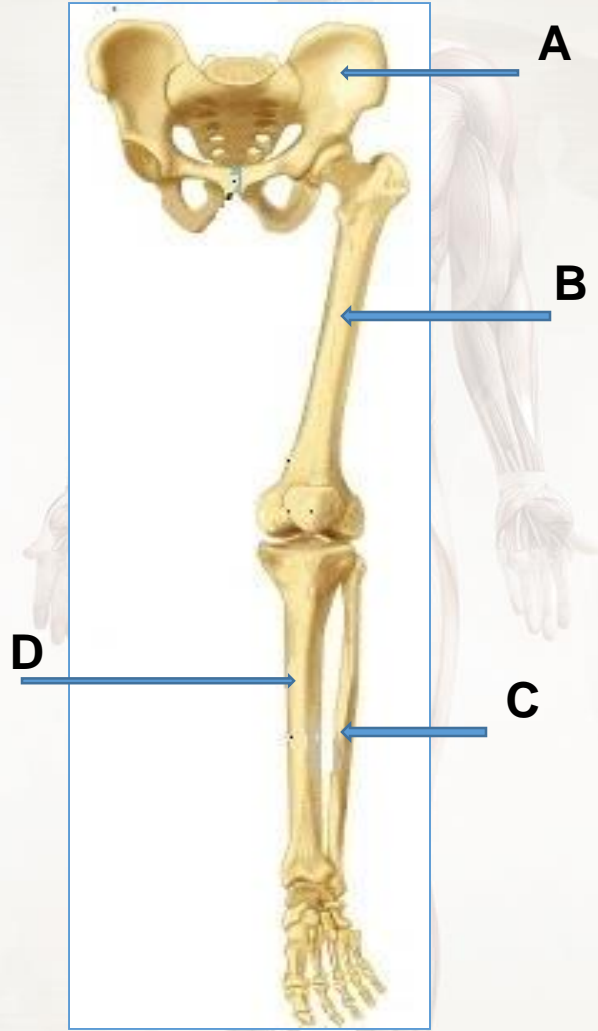
- A. **Scapula**
- B. **Humerus**
- C. **Ulna (Medial)**
- D. **Radius (Lateral)**



Case 8

Identify

- A.
- B.
- C.
- D.



Case 8

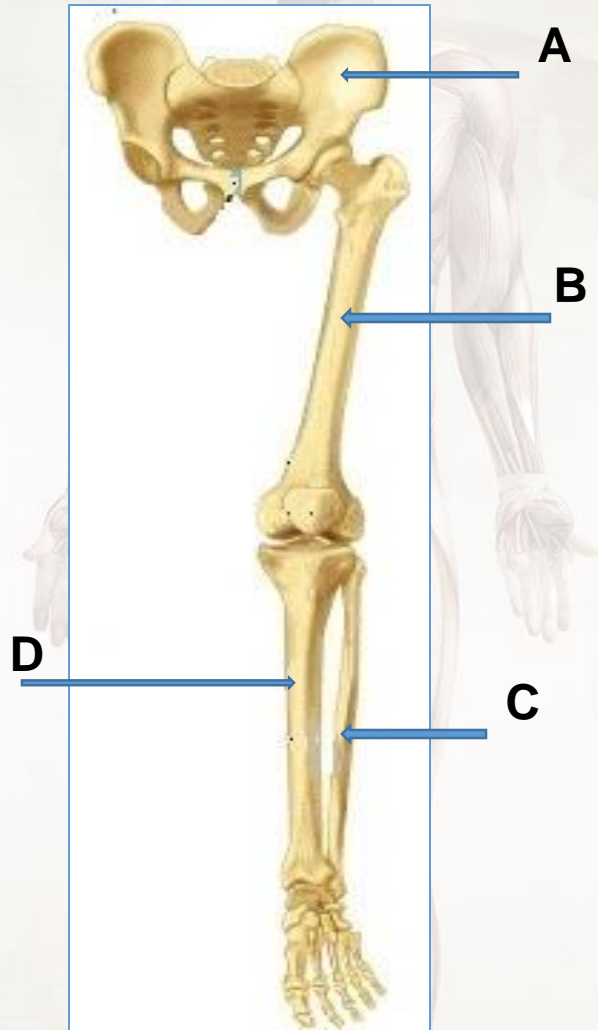
Identify:

A. **Hip Bone**

B. **Femur**

C. **Fibula** (smaller & lateral)

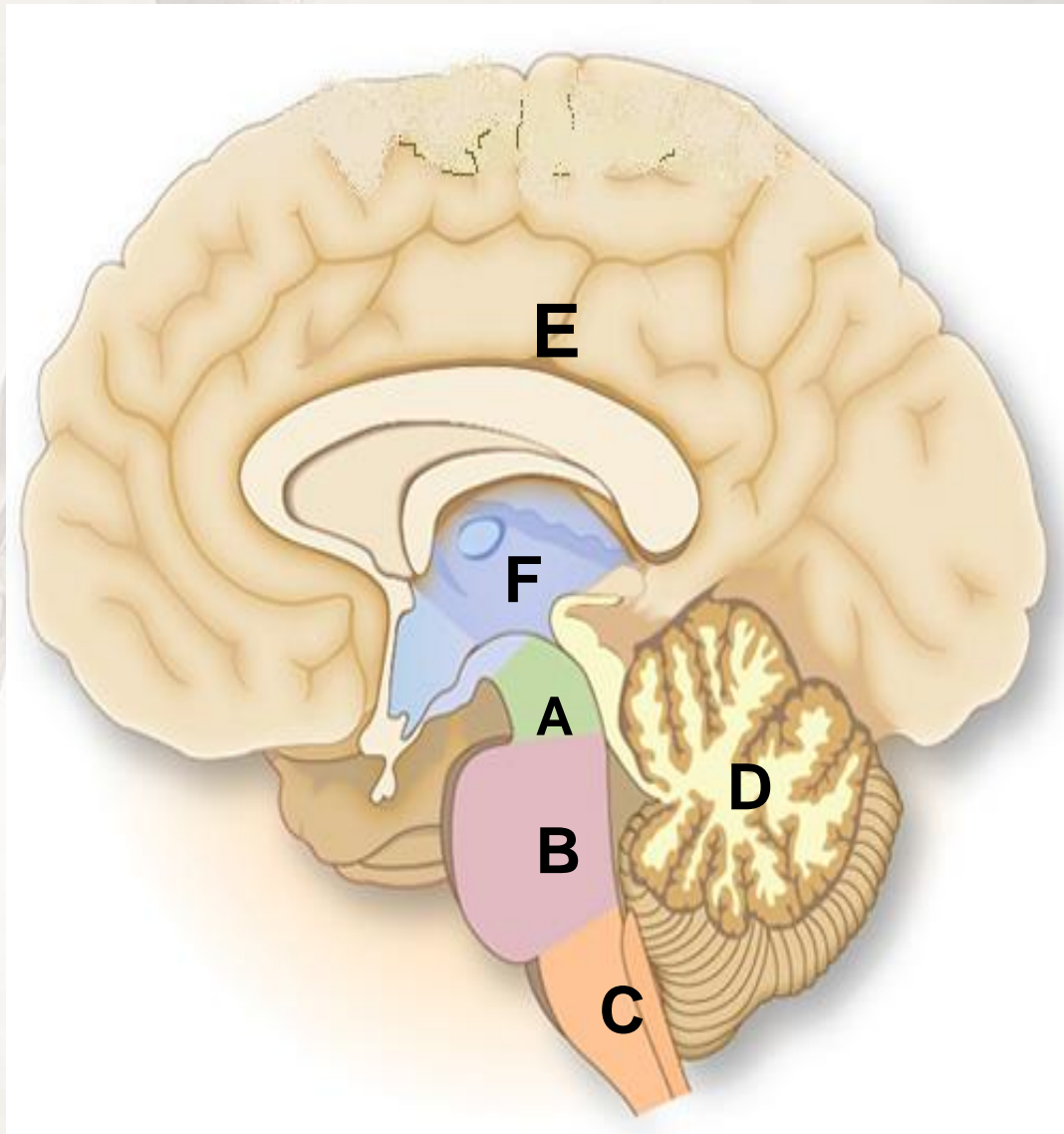
D. **Tibia** (bigger & medial)



Case 9

Identify parts of the brain marked A, B, C, D, & E:

- A.
- B.
- C.
- D.
- E.
- F.

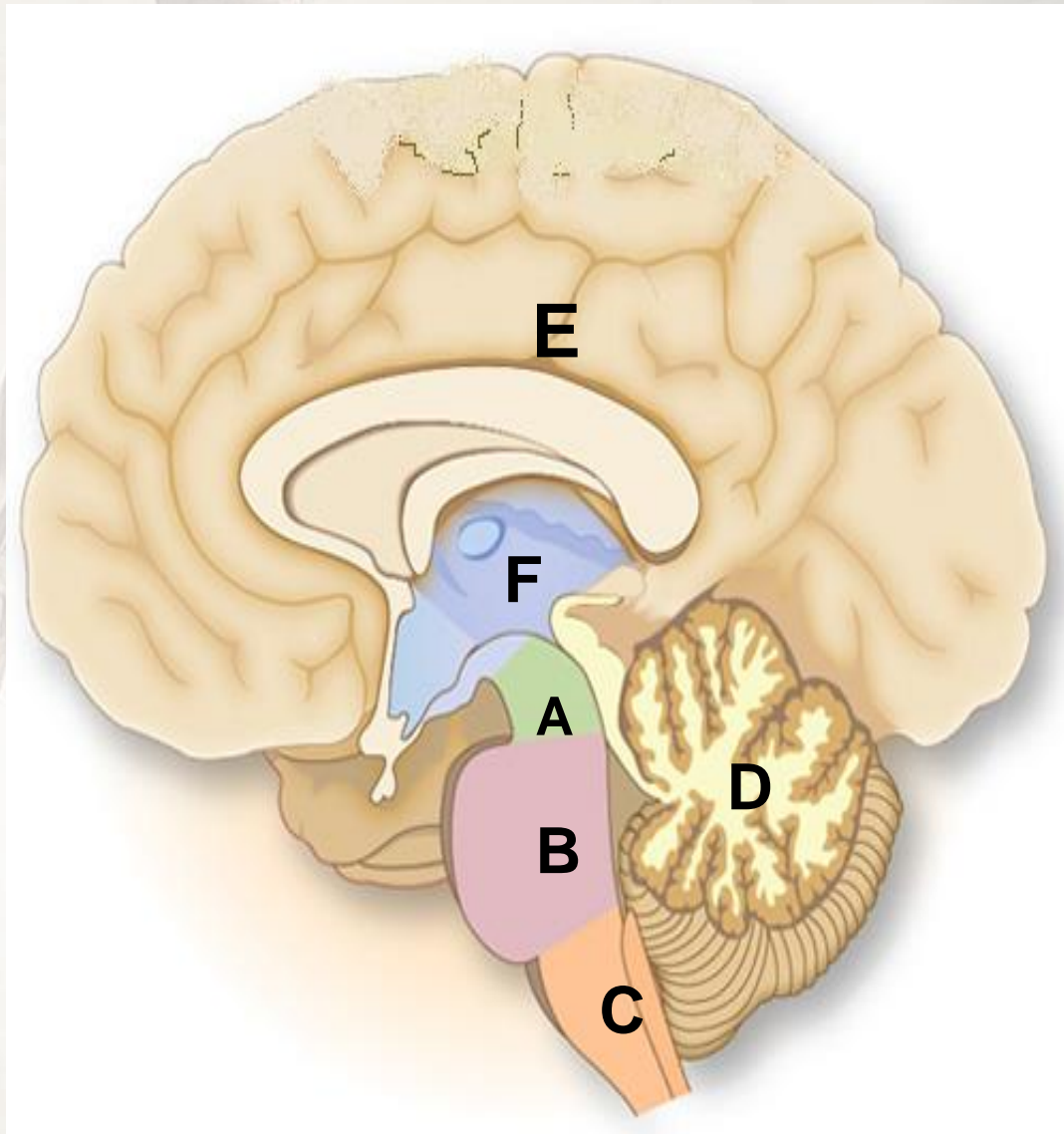


Case 9

Identify parts of the brain marked A, B, C, D, & E:

- A. **Midbrain**
- B. **Pons**
- C. **Medulla oblongata**
- D. **Cerebellum**
- E. **Cerebrum**
- F. **Diencephalon**

A + B + C = Brain Stem



Case 10

Identify the bones :

- A.
- B.
- C.



Case 10

Identify the bones :

- A. **Ulna**
- B. **Radius**
- C. **2nd Metacarpal bone**

Note :

- The radius lower end is bigger than the ulna lower end.
- To count the metacarpal bones; we start from the thumb.



Anatomy Team Members

رہام العبيدان
محمد الرويتع
نہی الحمیضی
مشاعل الحسین
نہی القویز

عبدالرحمن الکاف
عبدالعزیز النویب
عبدالله العمیر
إہام الغامدی
أمل أفراح

لمیاء الذوادی
معاذ البطاح
حنان خشیم

Contact us on our E-mail : Anatomy434@yahoo.com

An anatomical illustration of a human male figure, shown from both the back and front views. The figure is rendered in a light, semi-transparent style, revealing the underlying musculature and skeletal structure. The background is a soft, light gray. On the right side, there is a large, faint graphic of a human brain, suggesting a connection between physical fitness and cognitive health. The text "Good Luck" is overlaid in the center of the image.

Good Luck