

Histology practical revision



For any correction, suggestion or any useful information do not hesitate to contact us: Histology434@gmail.com

دعاء ما قبل المذاكرة

للهم افتح لي أبواب حكمتك وانشر علي رحمتك
وامن علي بالحفظ و الفهم سبحانه لا علم لنا إلا
ما علمتنا انك أنت العليم الحكيم، ربي اشرح لي
صدري و يسر لي أمري و احلل عقدة من لساني
يفقهوا قولني .

Color Index:

Blue = Question

Purple = Additional Notes

Things you should know before studying these slides

- ✓ The pictures show in these slide will be the same pictures you will see in the exam however, it may not be colored.
- ✓ Mention the full name always and don't use shortcuts
- ✓ Arrows in the pictures are very important.
- ✓ Don't worry it`s easy 😊.

Nucleus

Q1- Identify :

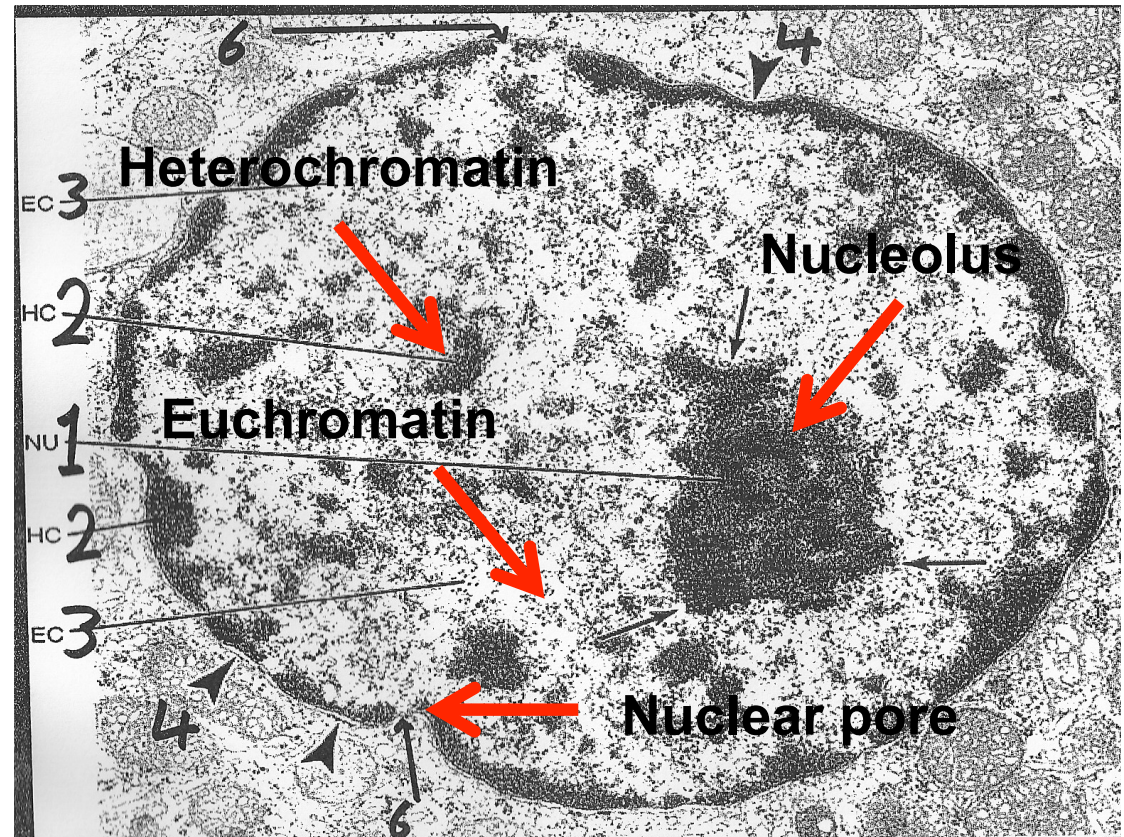
✓ Nucleus

Q2- Location of :

- Heterochromatin
- Euchromatin
- Nuclear pore
- Nucleolus

Q3- What is the function of **Nucleolus** ?

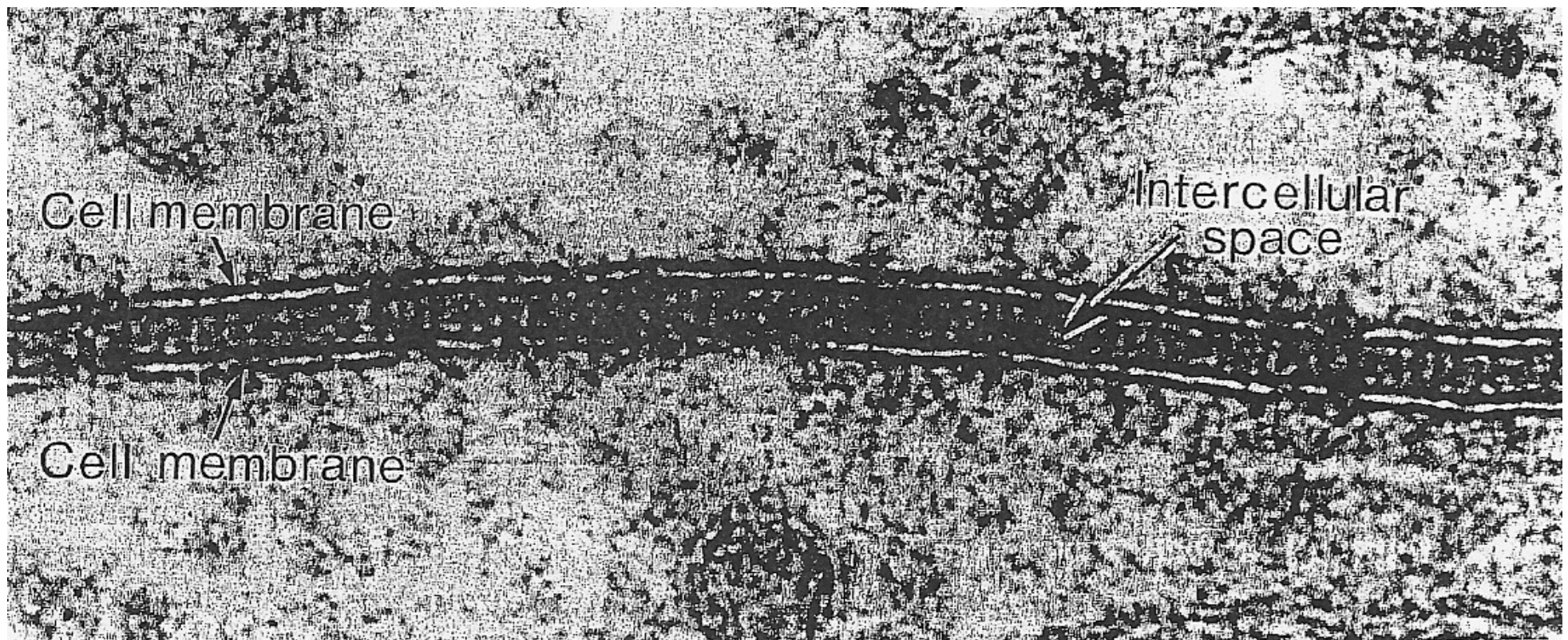
✓ Formation of ribosomal RNA (rRNA)



Cell membrane

Q1- Identify :

✓ Cell membrane (trilaminar appearance)



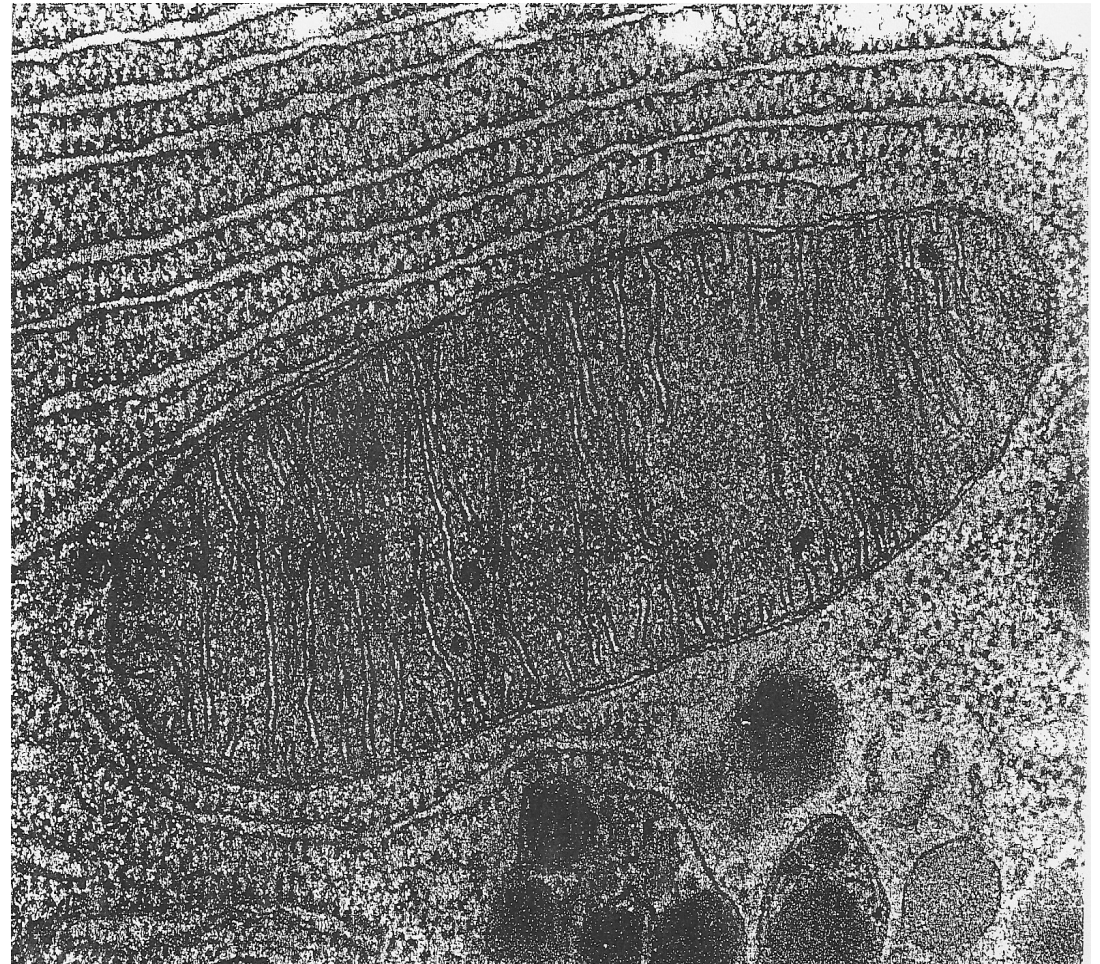
Mitochondria

Q1- Identify :

✓ Mitochondria

Q2- What is the function ?

✓ Production of ATP



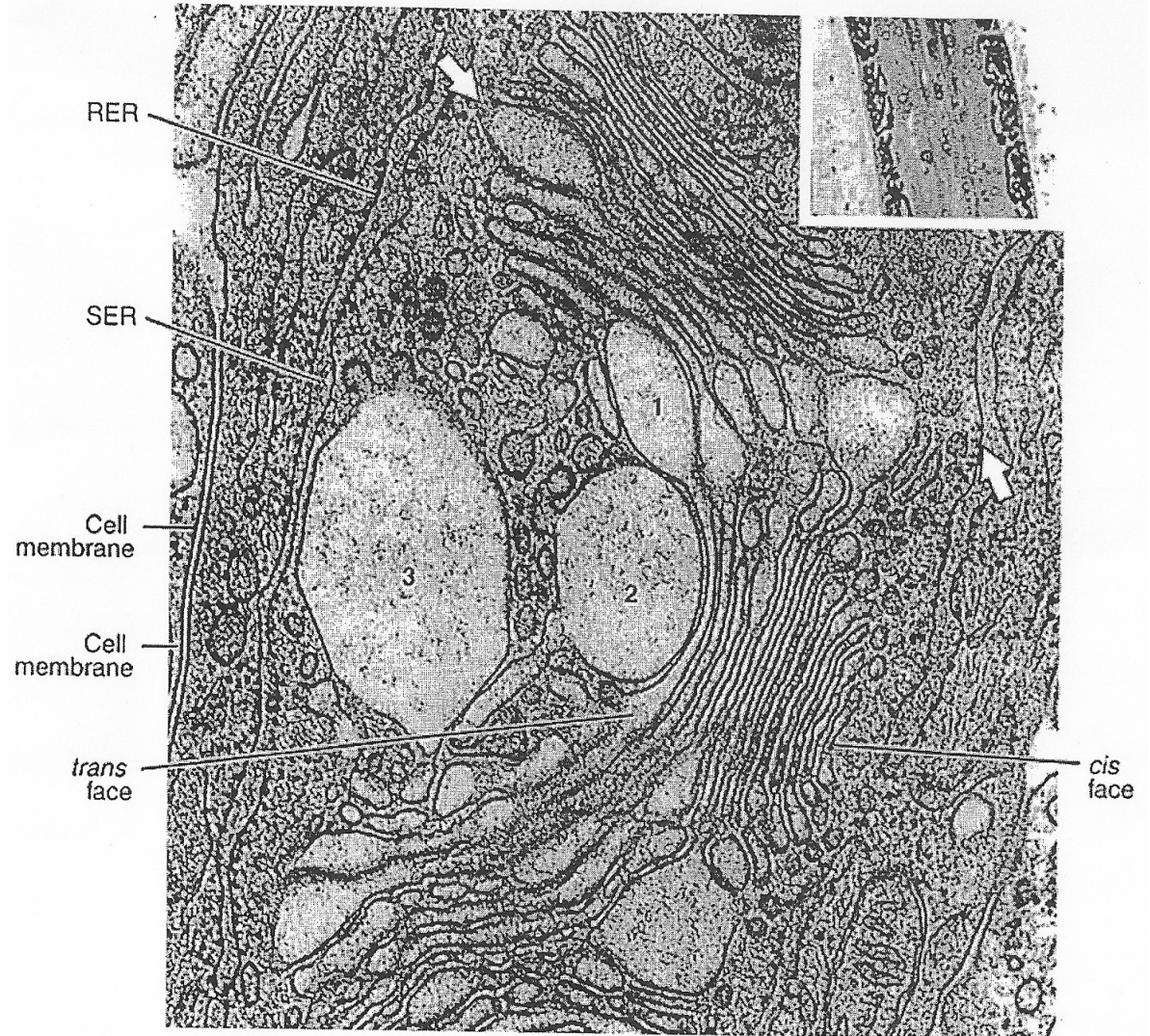
Golgi apparatus

Q1- Identify :

✓ Golgi apparatus

Q2- What is the function ?

- ✓ Packaging of proteins
- ✓ Modification of proteins



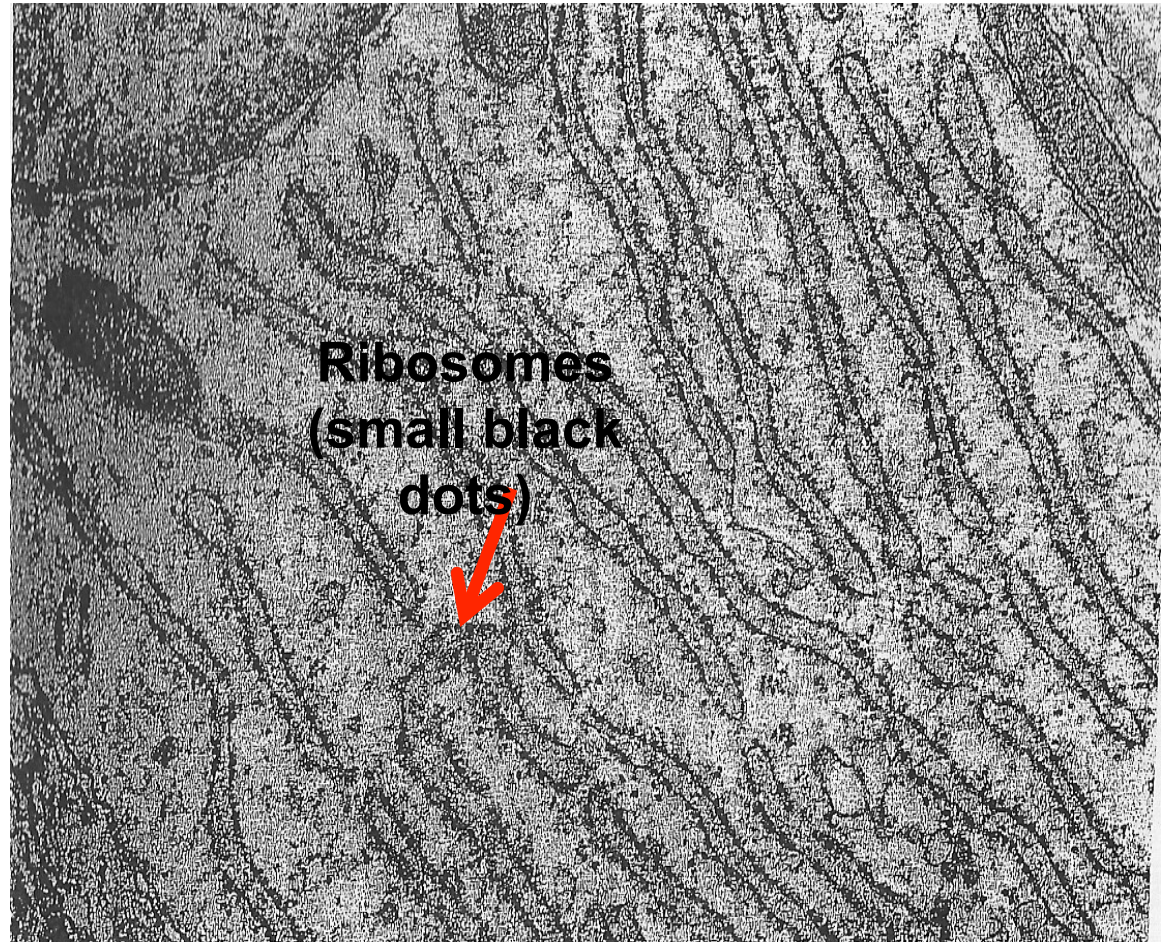
Rough Endoplasmic Reticulum

Q1- Identify :

✓ Rough Endoplasmic Reticulum

Q2- What is the function ?

✓ Synthesis of protein



Smooth Endoplasmic Reticulum

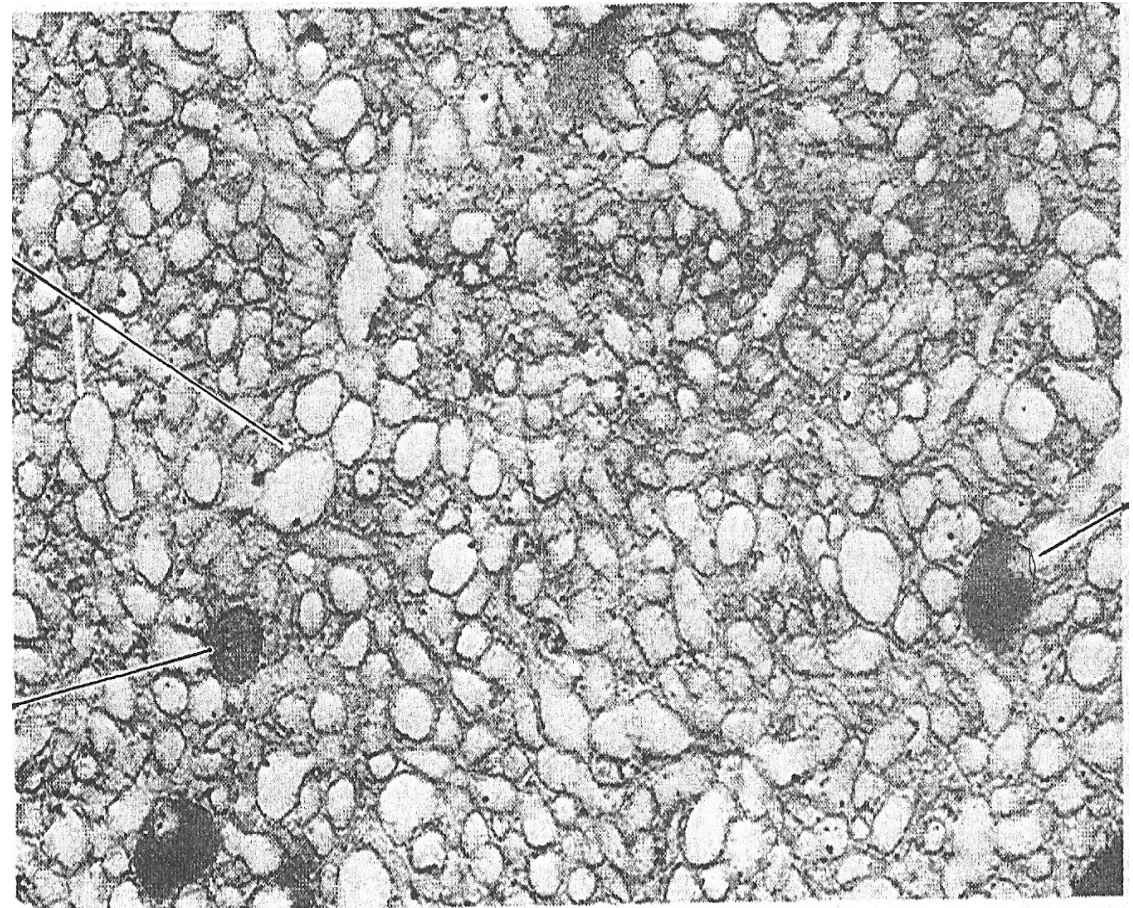
Q1- Identify :

✓ Smooth Endoplasmic Reticulum

Q2- What is the function ?

✓ Synthesis of lipid

✓ Detoxification



Centrioles

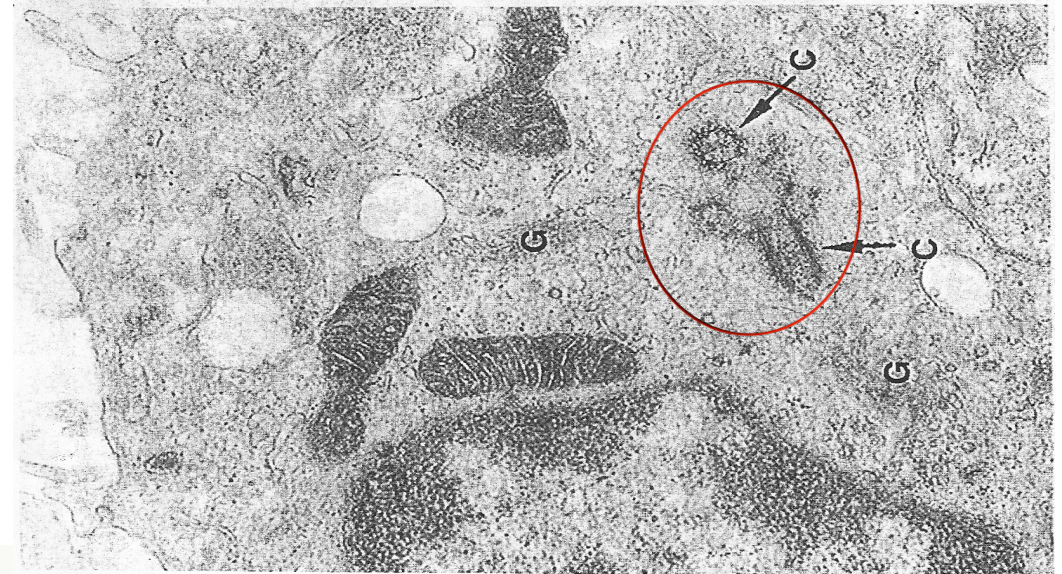
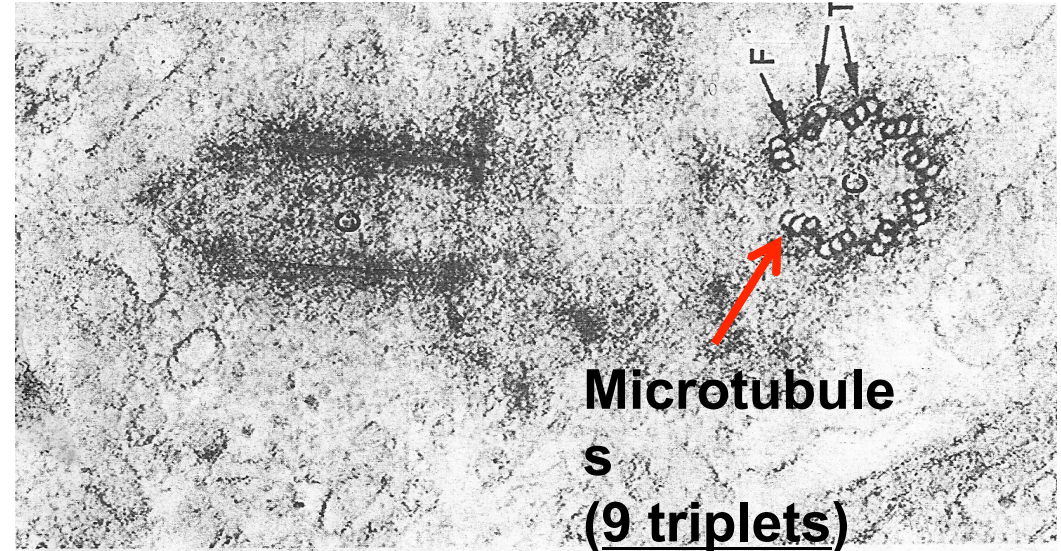
Q1- Identify :

✓ Centrioles

Q2- What is the function ?

✓ Cell division

✓ Formation of Cilia and Flagella



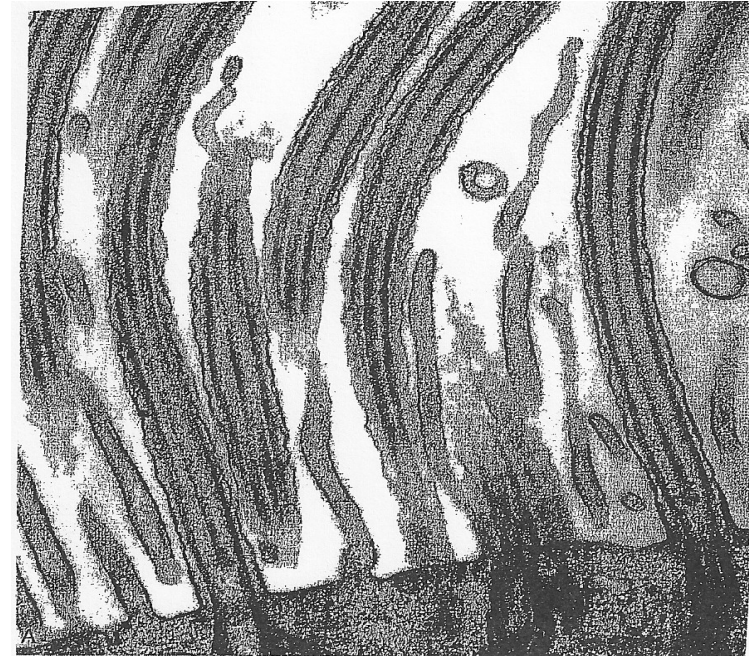
Cilia

Q1- Identify :

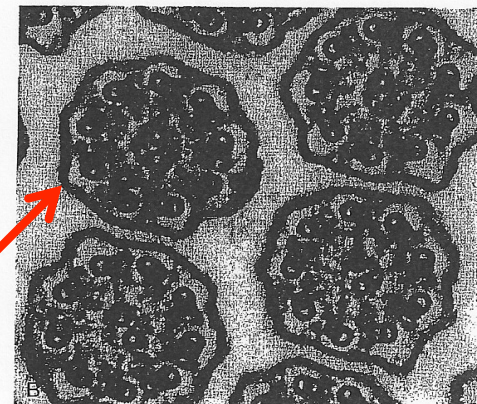
✓ Cilia

Q2- What is the function ?

✓ movement of particles or fluids in one direction



L.S.



T.S.

Microtubules
(9 doublets and 2 central)

Microvilli

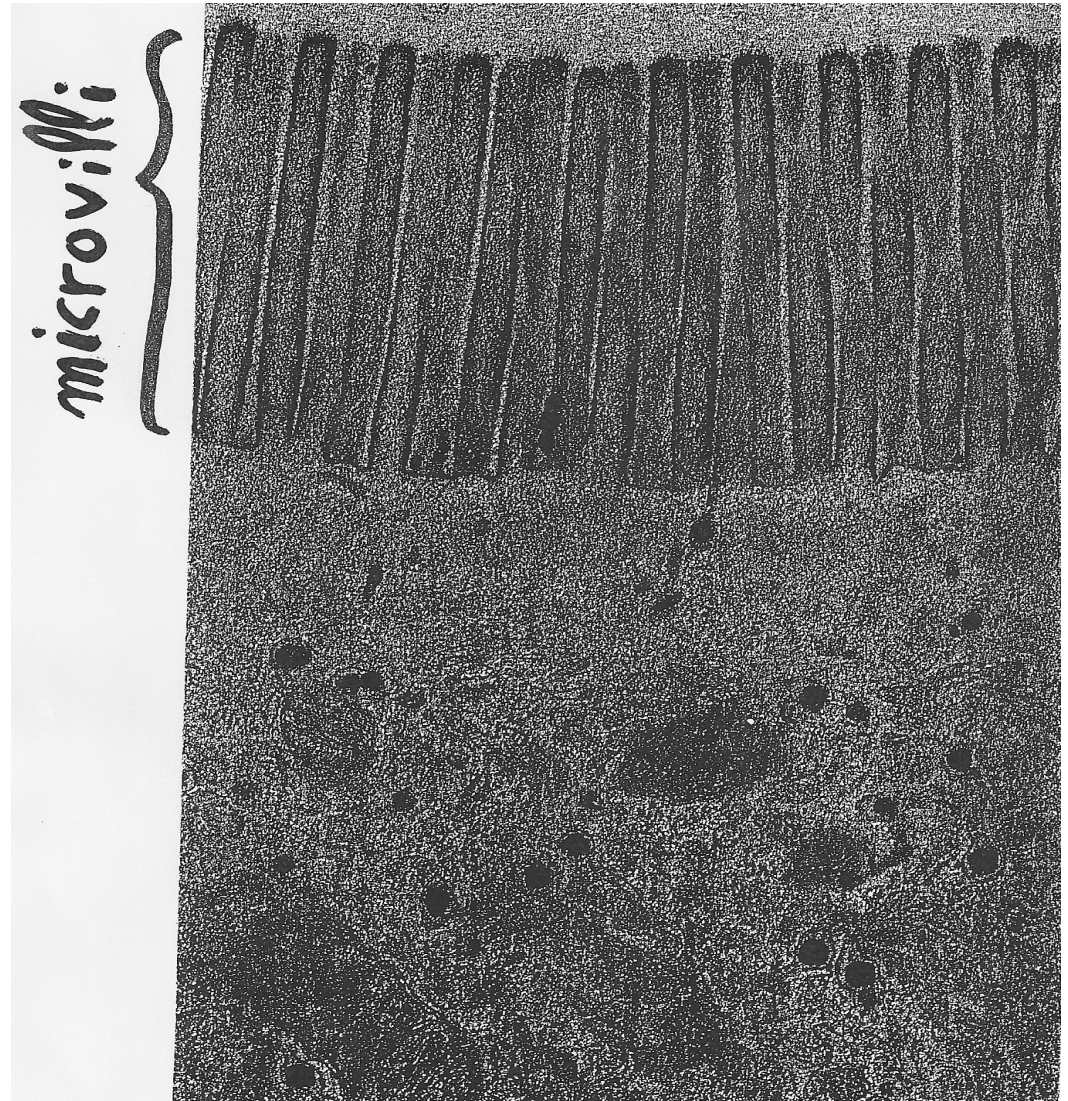
Q1- Identify :

✓ Microvilli

Q2- What is the function ?

✓ Increase surface area

➤ Has Microfilaments



Simple Squamous Epithelium

Q1- Identify the type of epithelium:

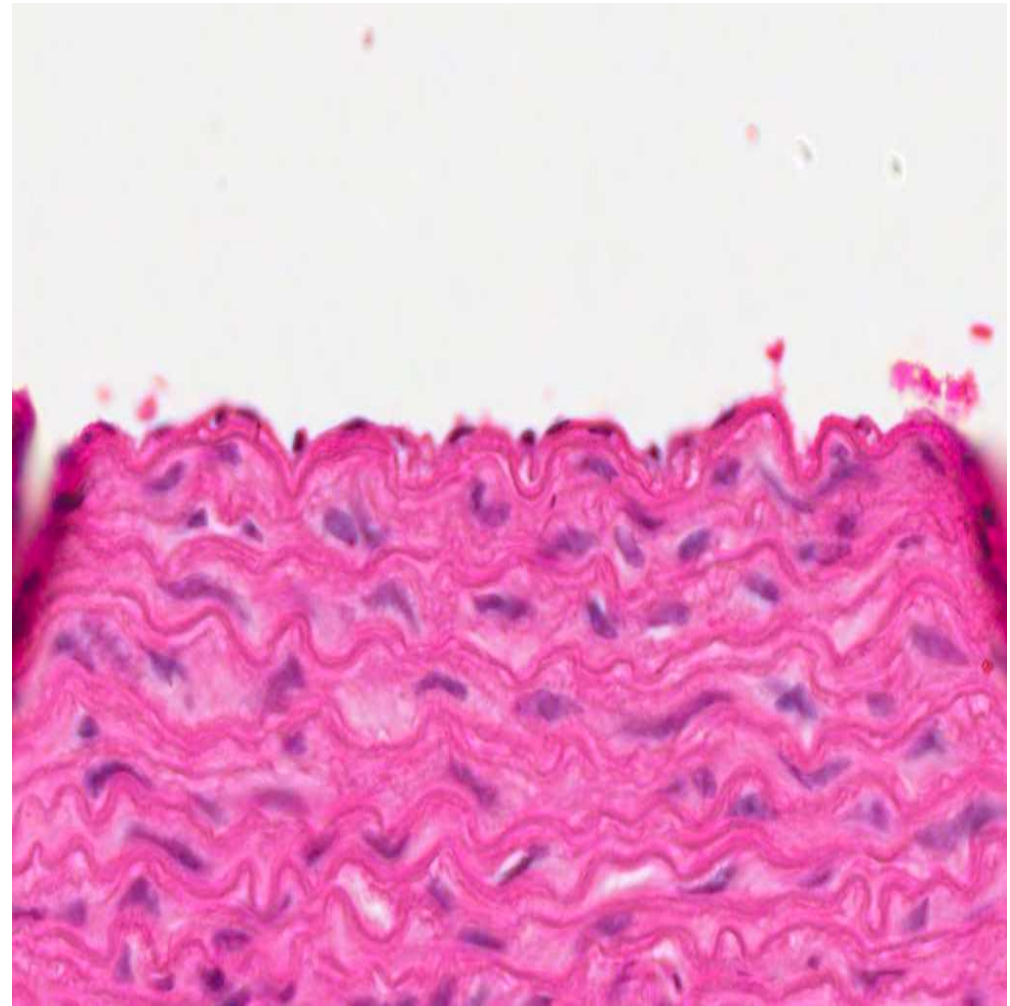
✓ Simple Squamous Epithelium

Q2- What is the type of Connective tissue ?

✓ Elastic connective tissue

Q3- Mention the organ:

✓ Aorta



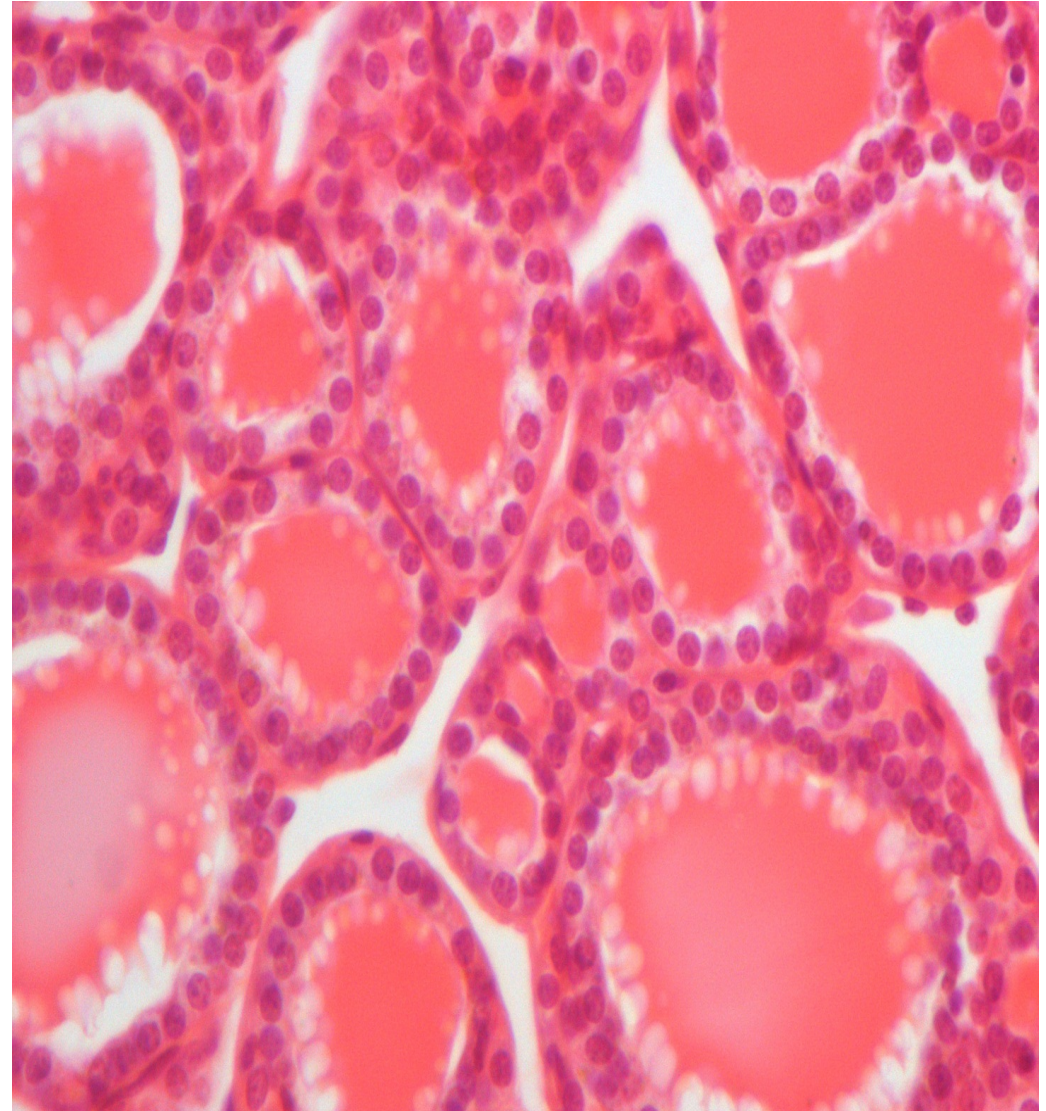
Simple Cuboidal Epithelium

Q1- Identify the type of Epithelium:

✓ Simple Cuboidal Epithelium

Q2- Mention the organ:

✓ Thyroid gland



Simple Columnar Epithelium

Q1- Identify the type of epithelium:

✓ Simple Columnar Epithelium

Q2- Mention the organ:

✓ GIT small intestines



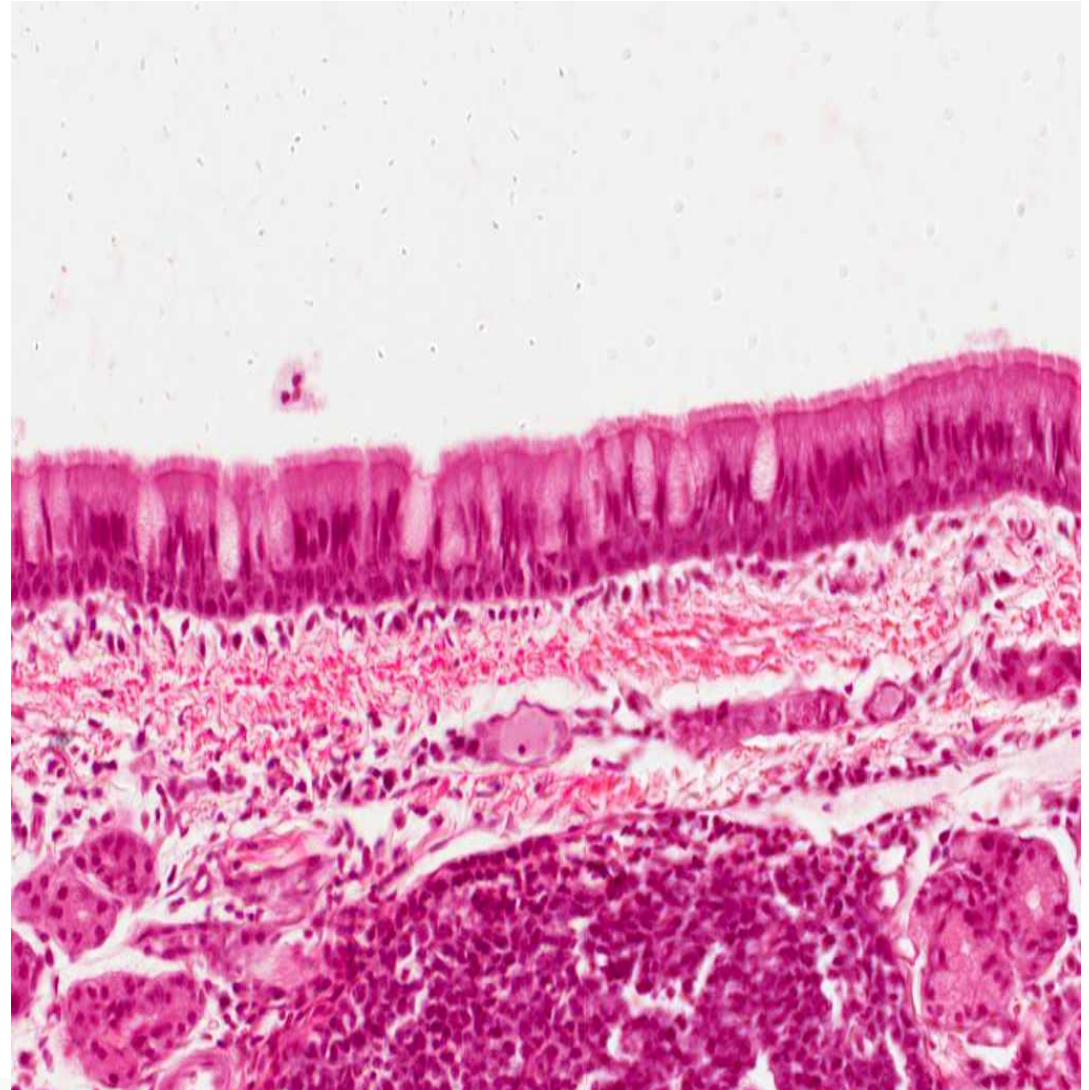
Pseudostratified Columnar Ciliated Epithelium with Goblet Cells

Q1- Identify the type of epithelium:

- ✓ Pseudostratified Columnar Ciliated Epithelium with Goblet Cells

Q2- Mention the organ:

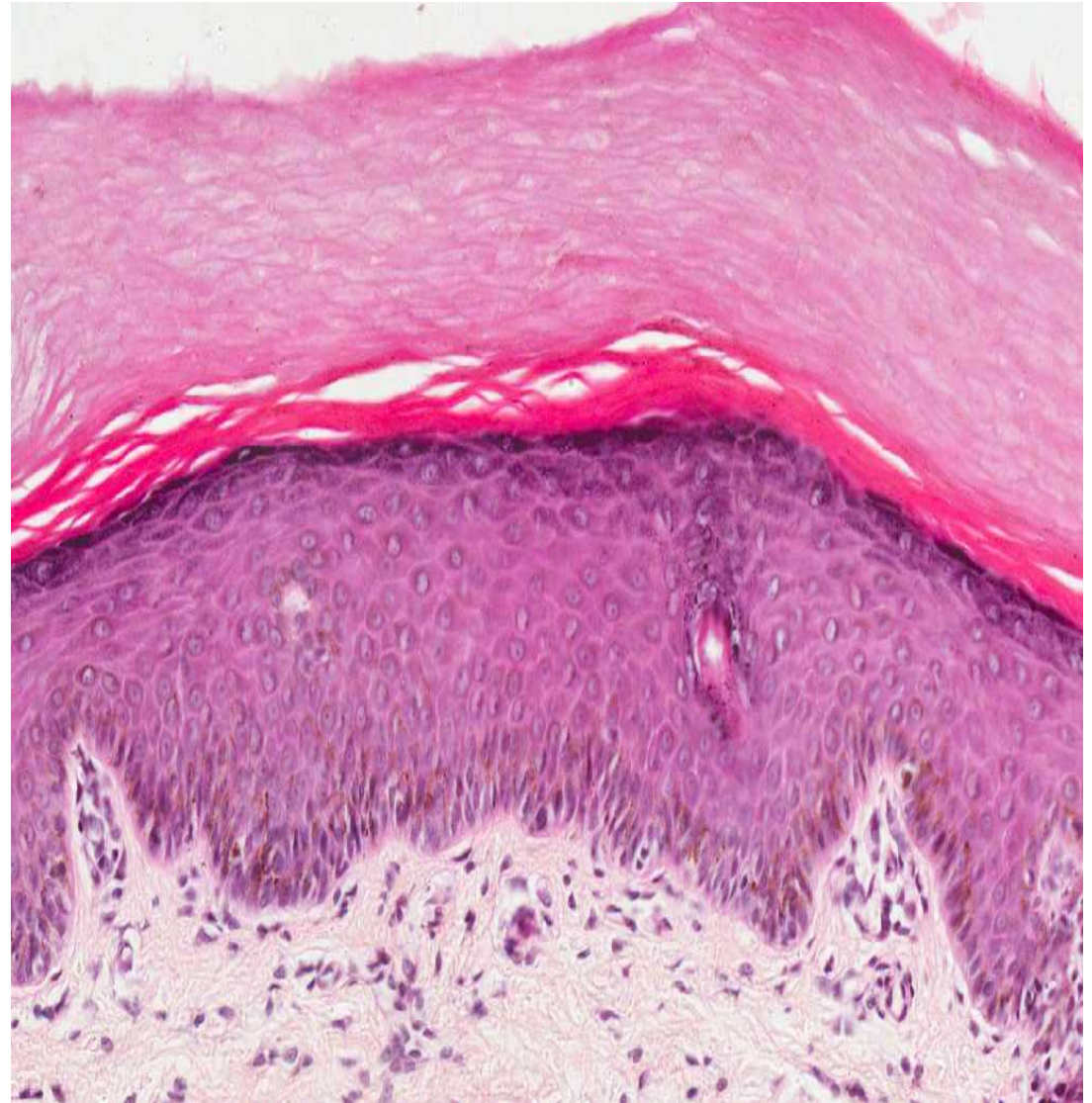
- ✓ Trachea and Bronchi



Stratified Squamous Keratinized Epithelium

Q1- Mention the organ :

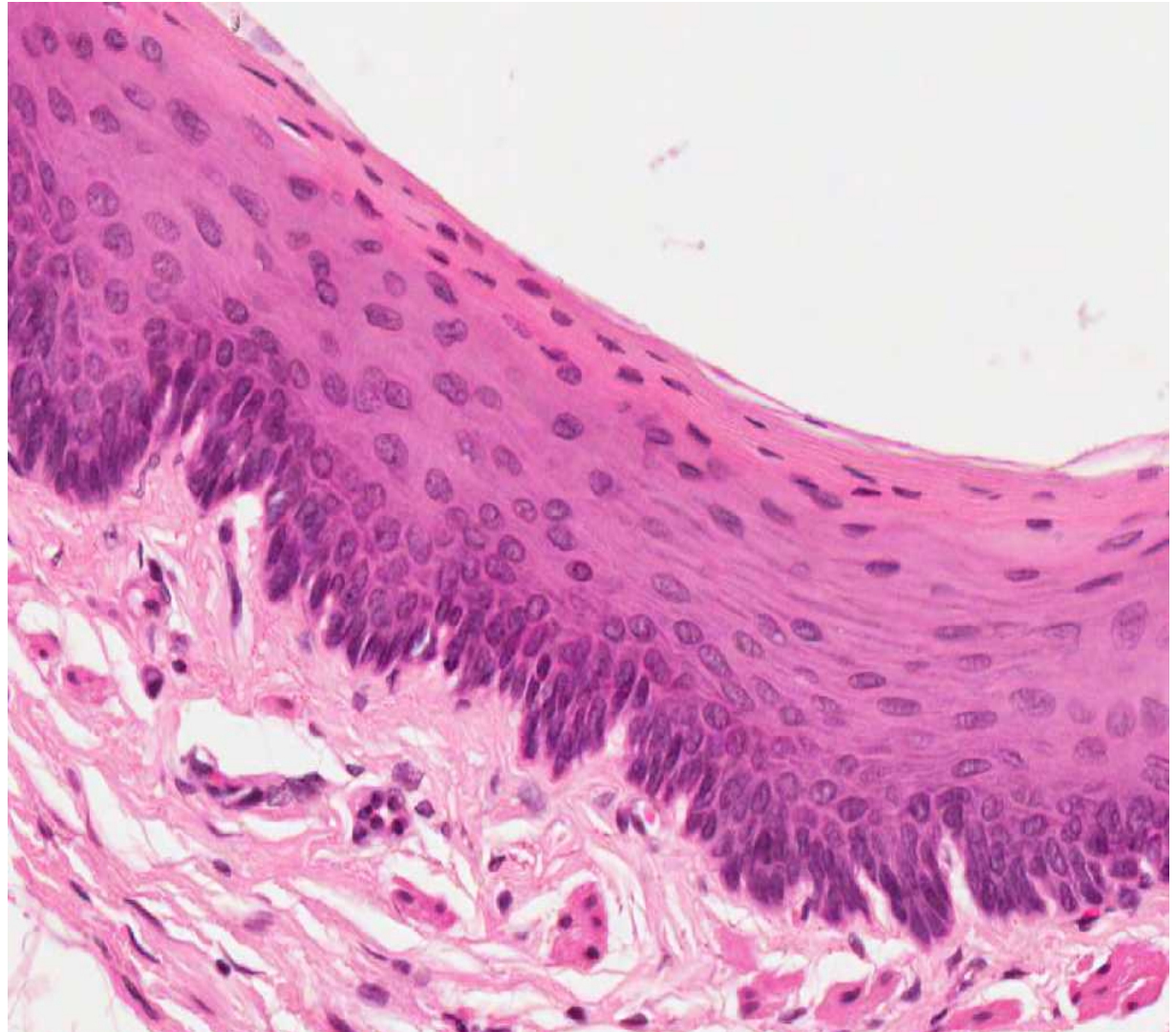
✓ Epidermis of skin



Stratified Squamous Non-Keratinized Epithelium

Q1- Mention the organ :

✓ Esophagus



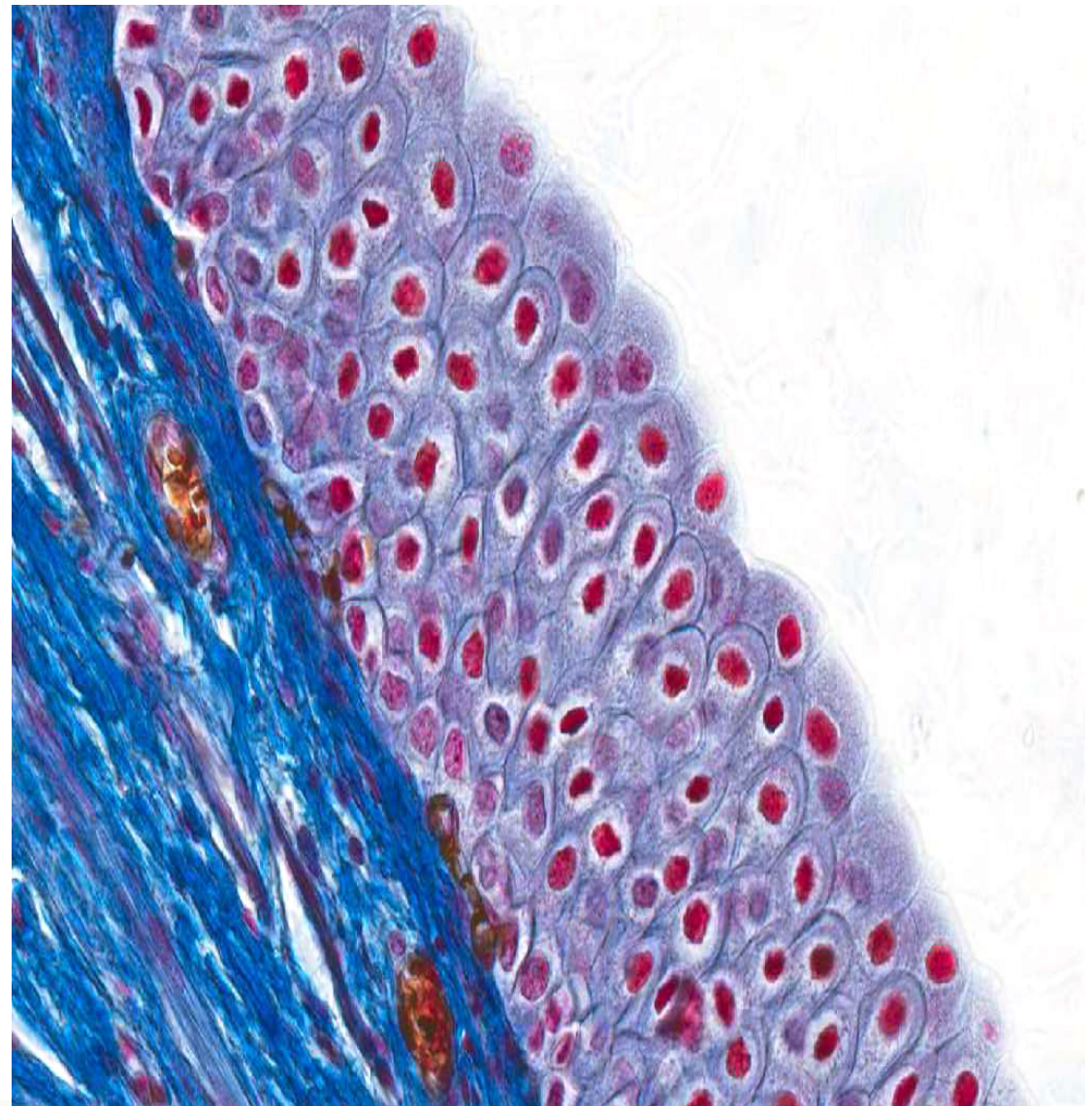
Transitional Epithelium

Q1- Identify the type of epithelium:

✓ Transitional epithelium

Q2- Mention the organ :

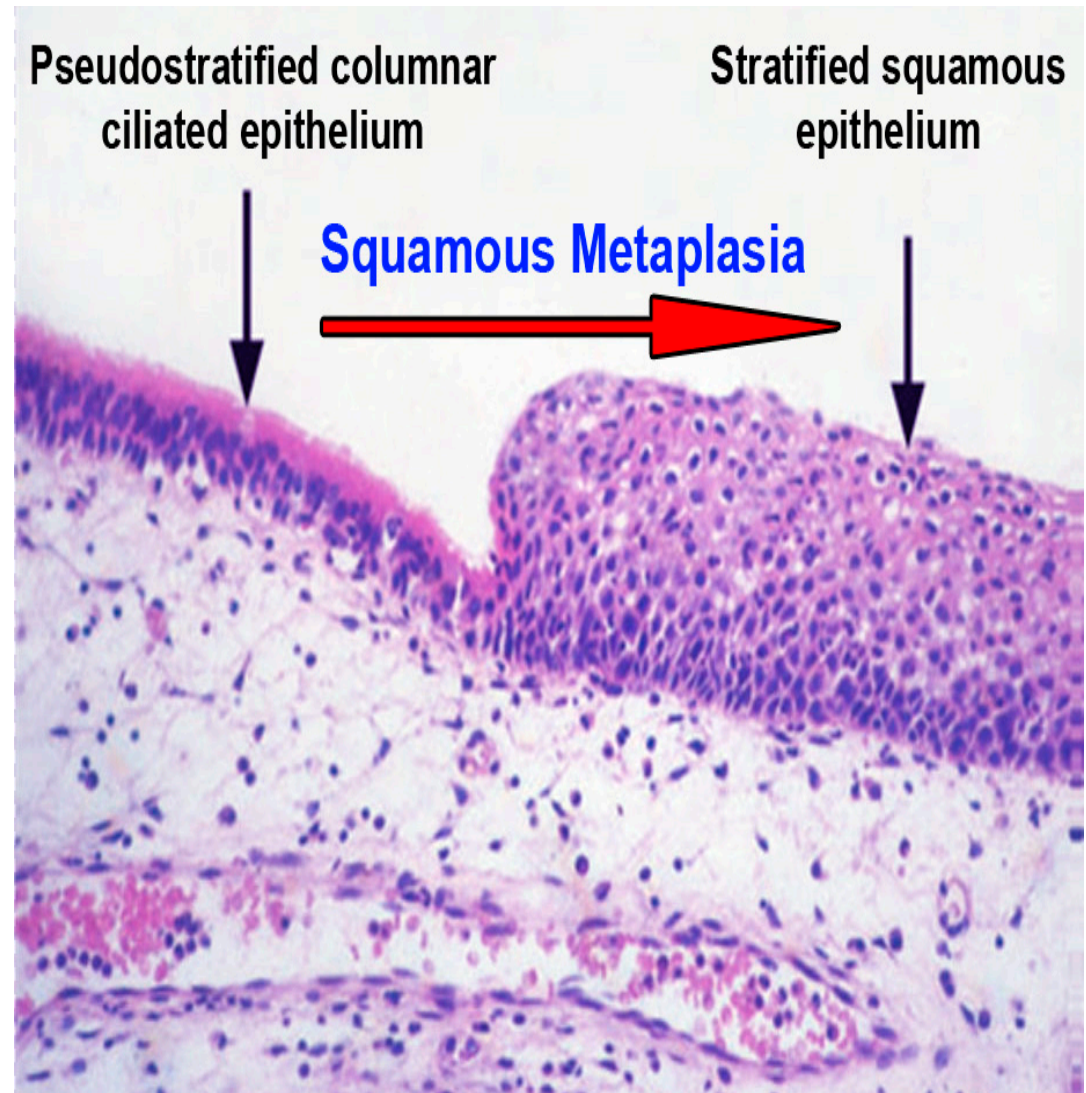
✓ Urinary bladder



Squamous Metaplasia

Q1- Identify :

- ✓ Squamous Metaplasia
- **From** pseudostratified columnar ciliated epithelium **to** stratified squamous epithelium



Dense collagenous regular connective tissue

Q1- What is the type of fibers ?

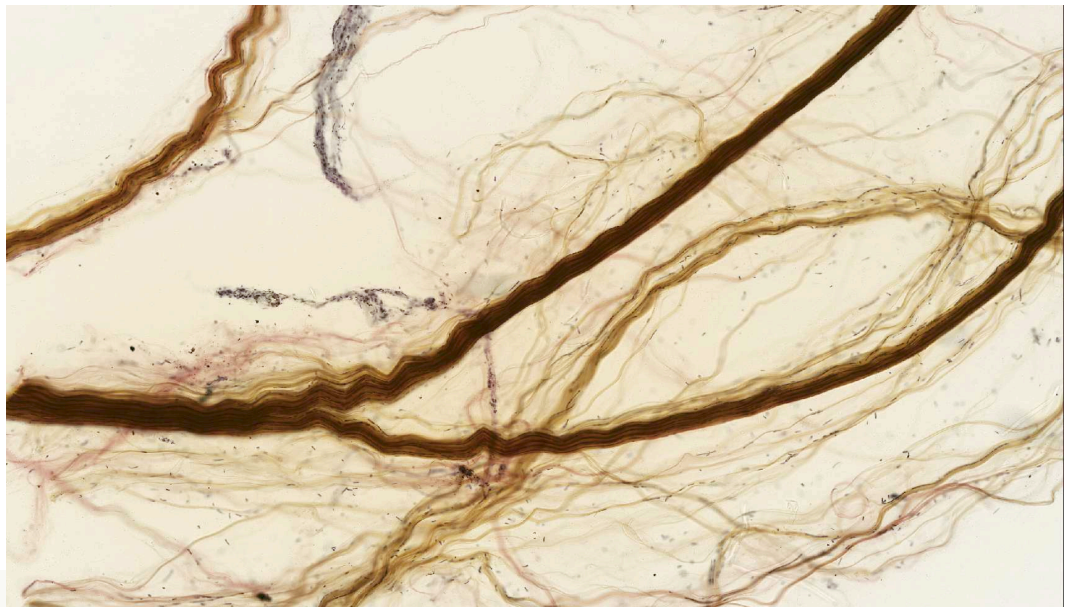
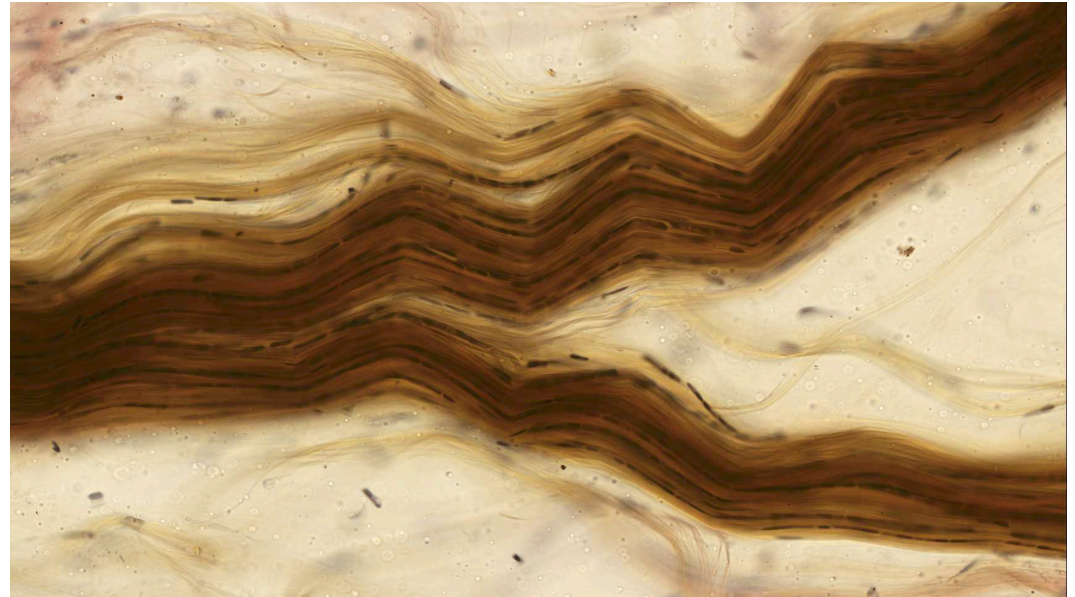
✓ Collagen Fibers

Q2- What is the type of cells ?

✓ Fibroblasts cells

Q3- Mention the organ:

✓ Tendons and ligaments



Elastic connective tissue

Q1- Identify:

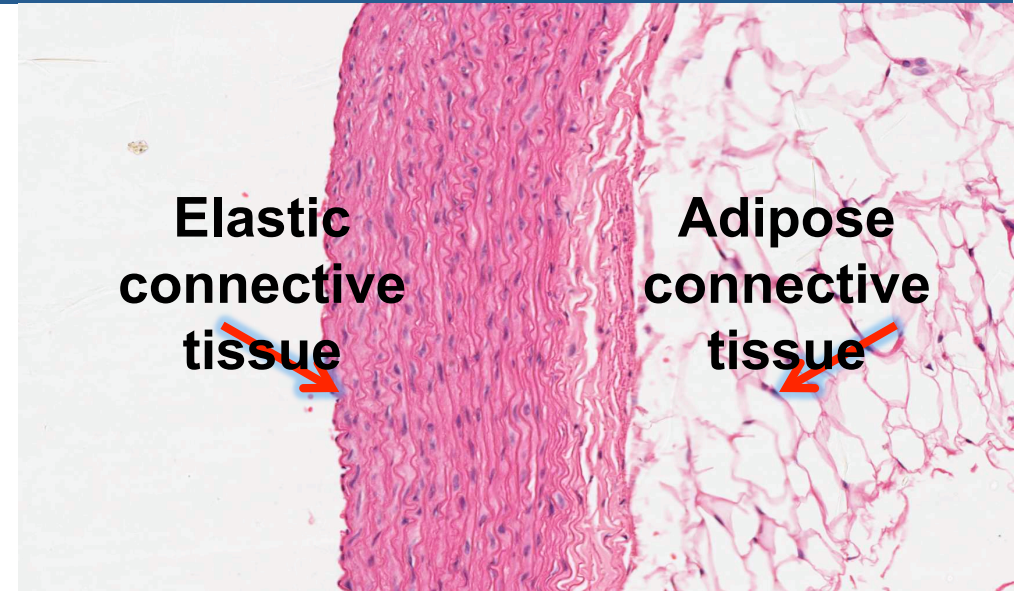
✓ Elastic connective tissue

Q2- Type of epithelium:

✓ Simple squamous

Q3- Mention the organ :

✓ Aorta



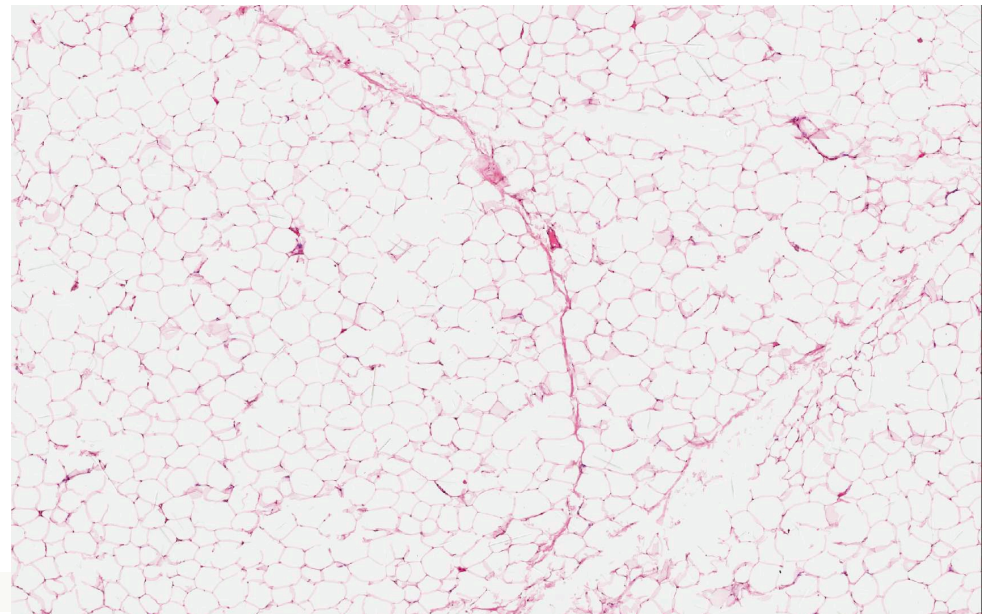
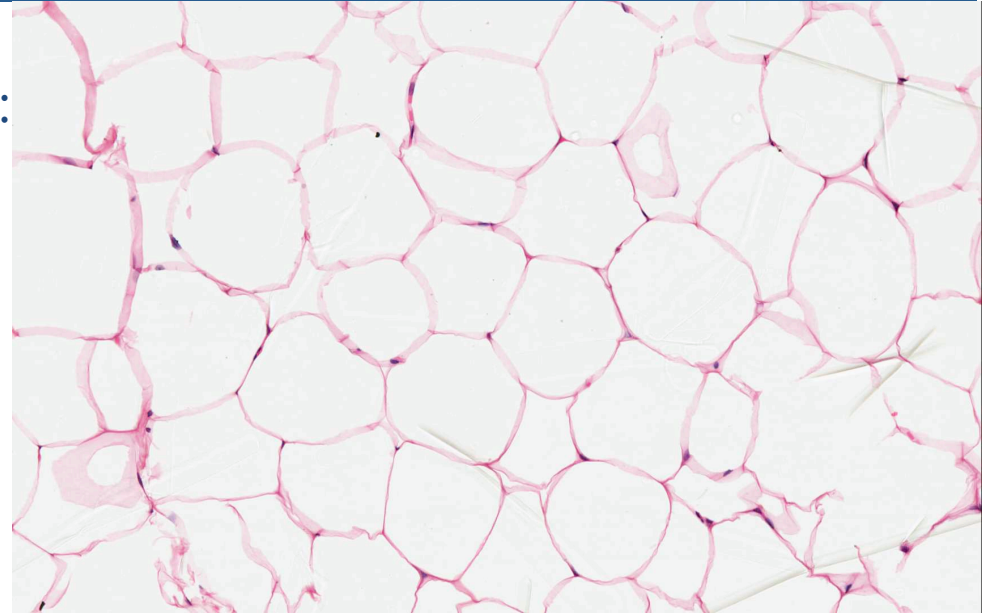
Adipose Connective Tissue

Q1- Identify the type of connective tissue:

✓ Adipose connective tissue

Q2- What is the type of cells ?

✓ Adipocyte



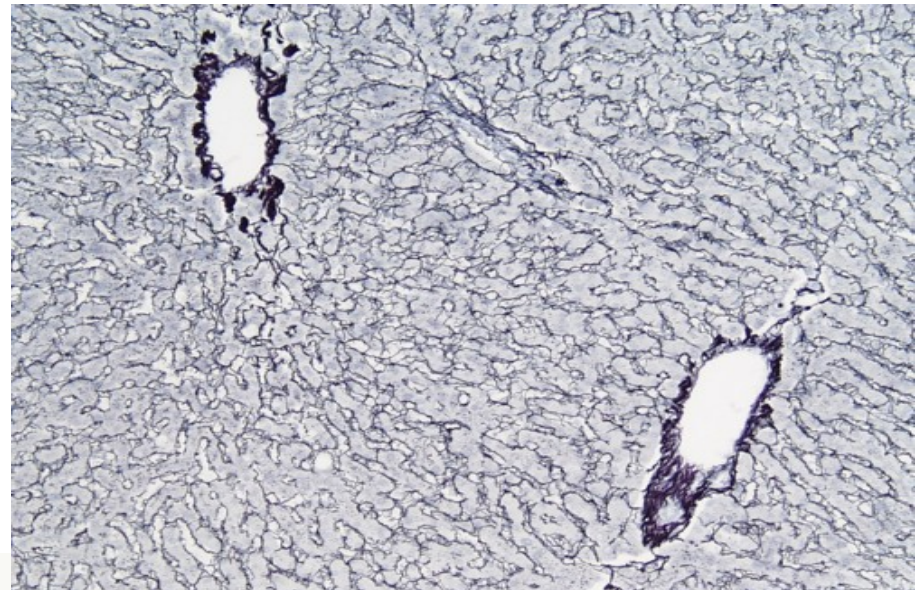
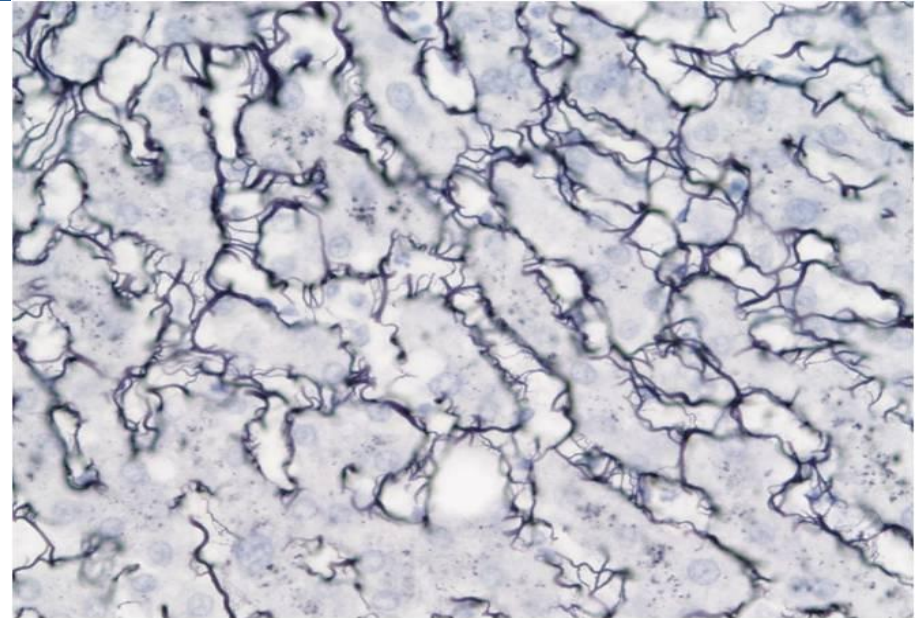
Reticular connective tissue

Q1- Identify the type of connective tissue:

✓ Reticular connective tissue

Q2- Mention the organ:

✓ Lymph node and Spleen



Plasma cell

Q1- Identify the type of the cell :

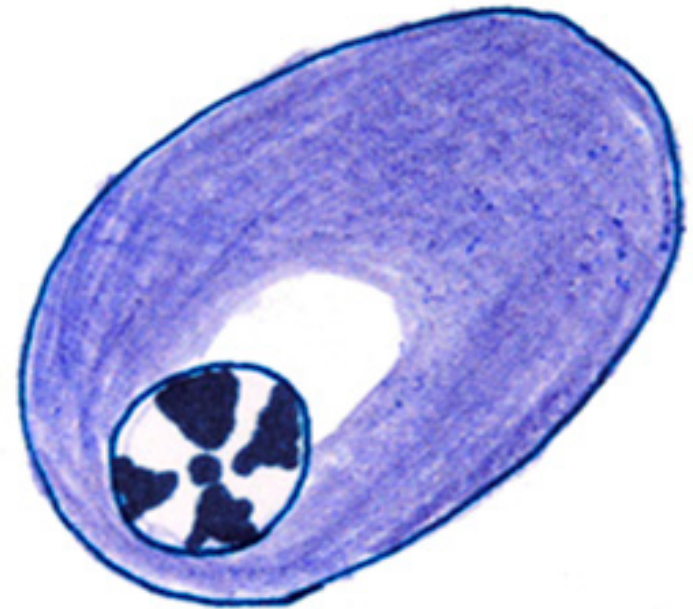
✓ Plasma cell (Clock-face)

Q2- What is the function ?

✓ Secretion of Antibodies

Q3- What is the type of cytoplasm ?

✓ Basophilic cytoplasm



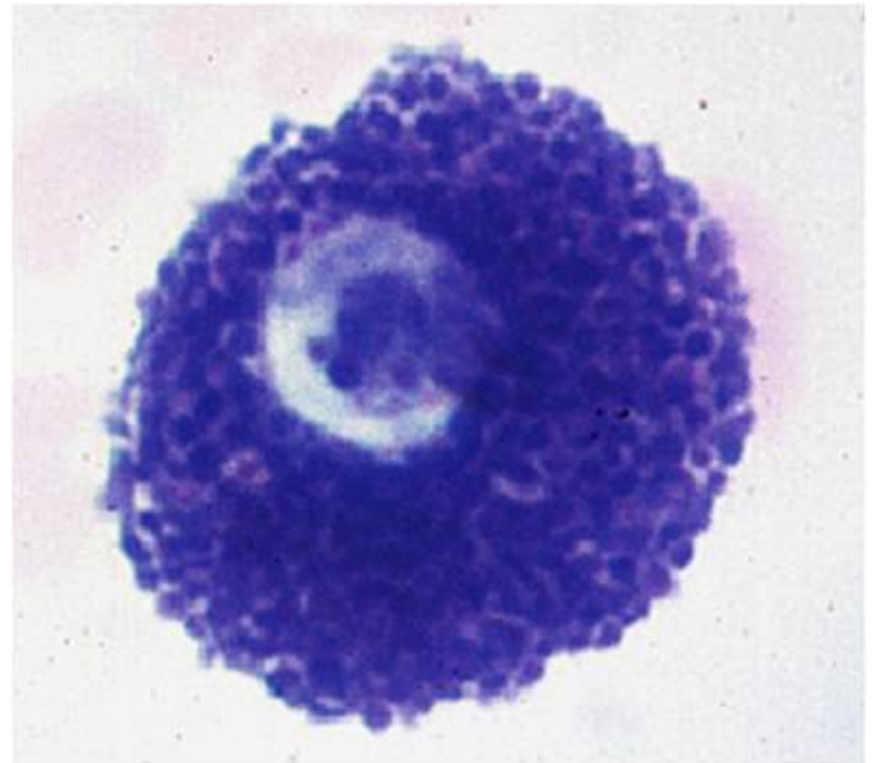
Mast cell

Q1- Identify the type of the cell:

✓ Mast cell

Q2- what is the function ?

✓ Secretion of Histamine and Heparin



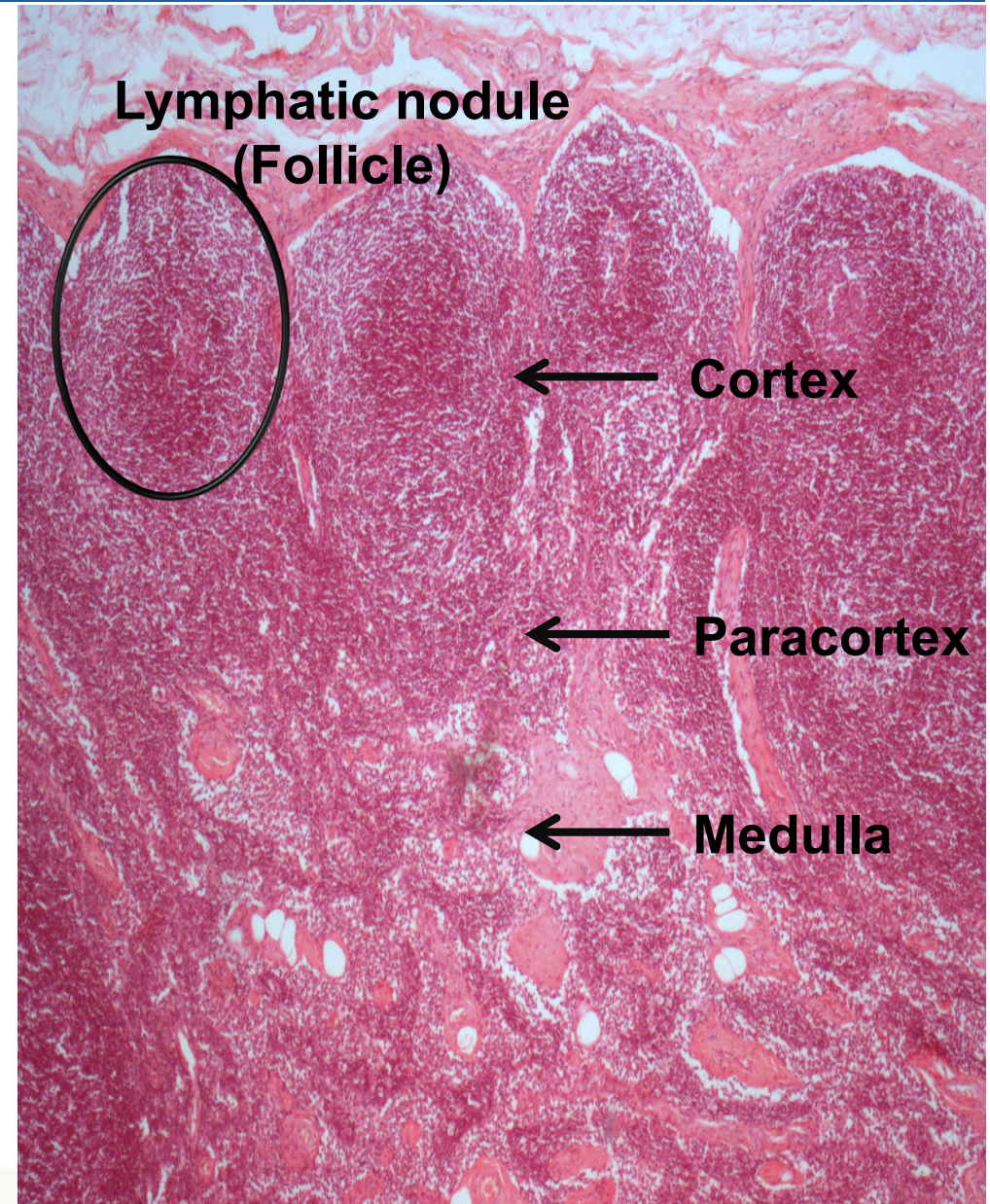
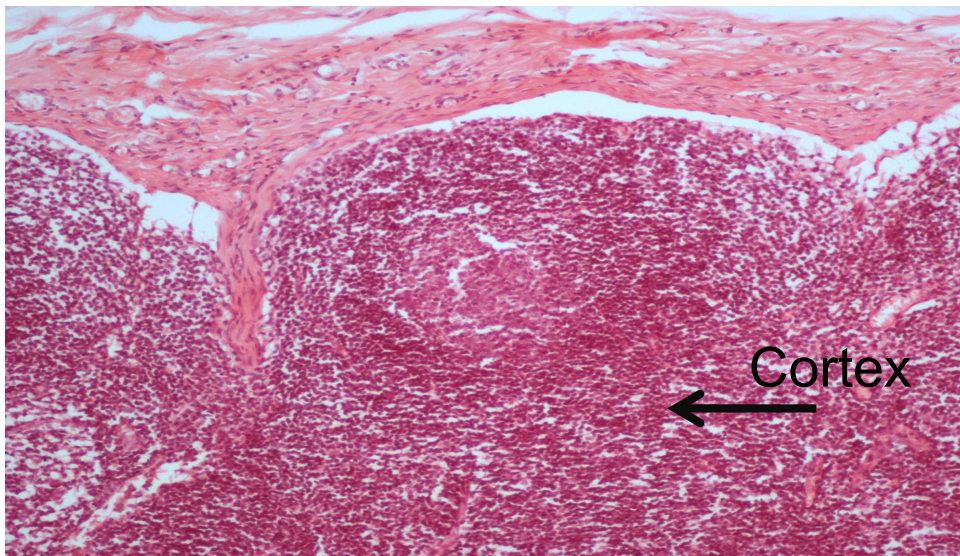
Lymph Node

Q1- Identify :

✓ Lymph Node

Q2- Location of :

- Lymphatic nodule (Follicle)
- Cortex
- Paracortex
- Medulla



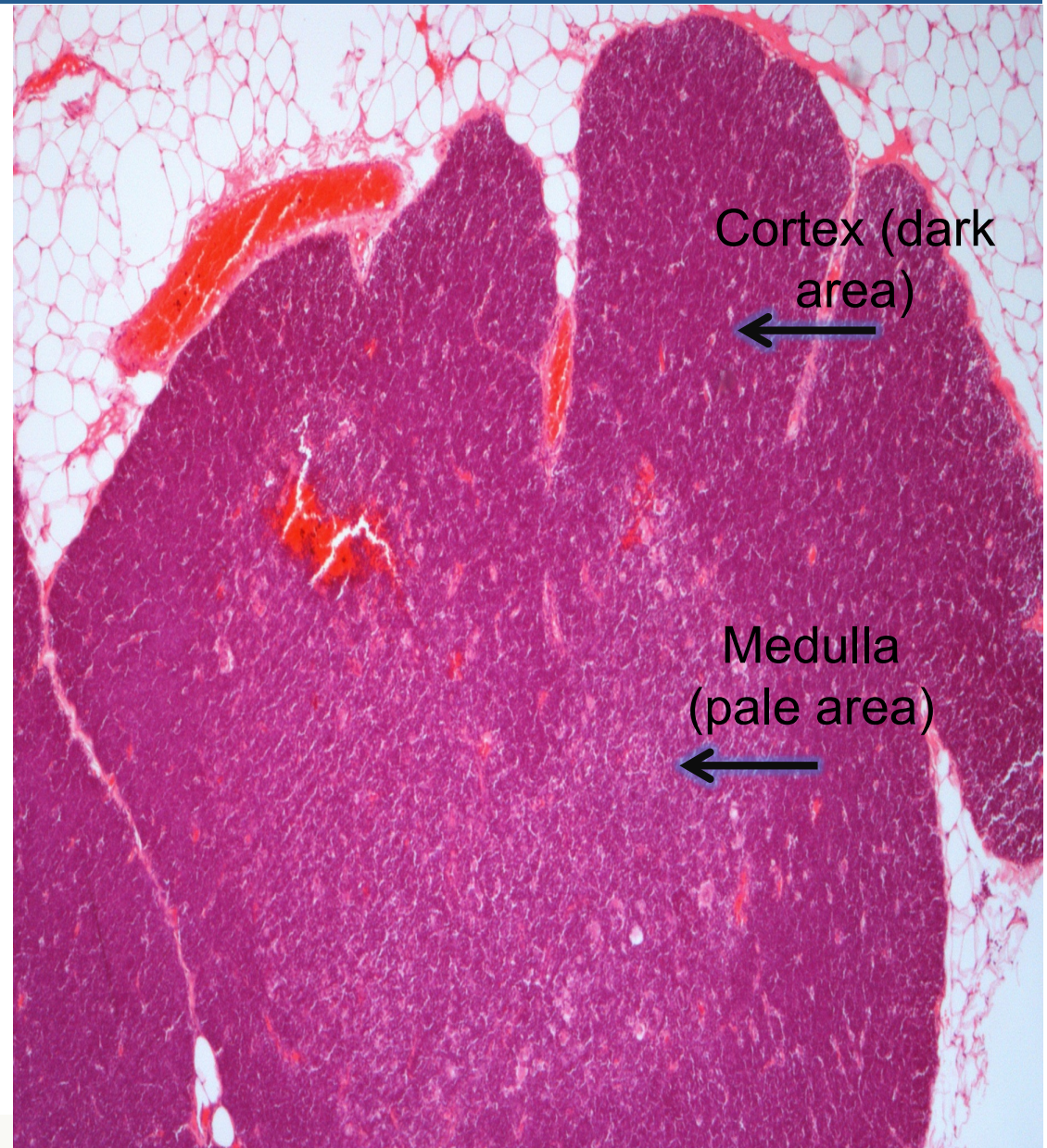
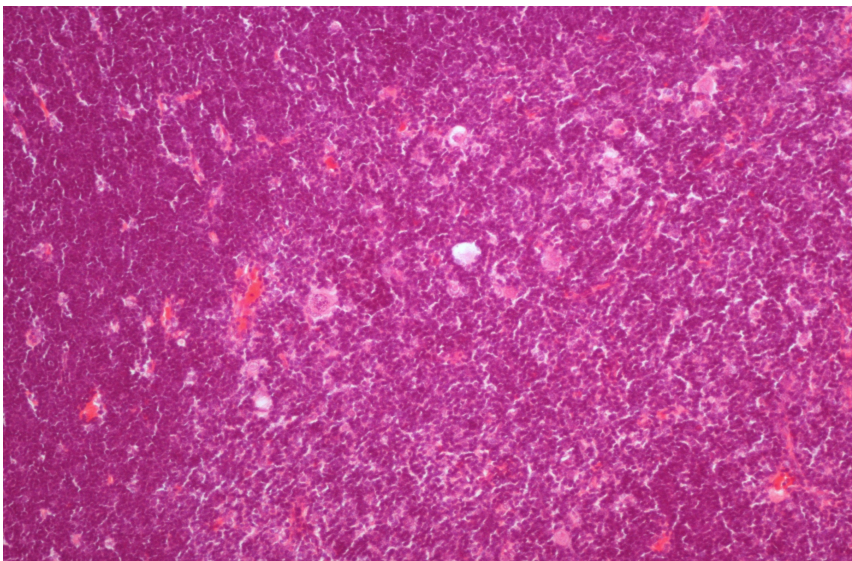
Thymus

Q1- Identify:

✓ Thymus “ Incomplete septum”

Q2- Location of :

- Cortex
- Medulla (**Hassall's corpuscles**)



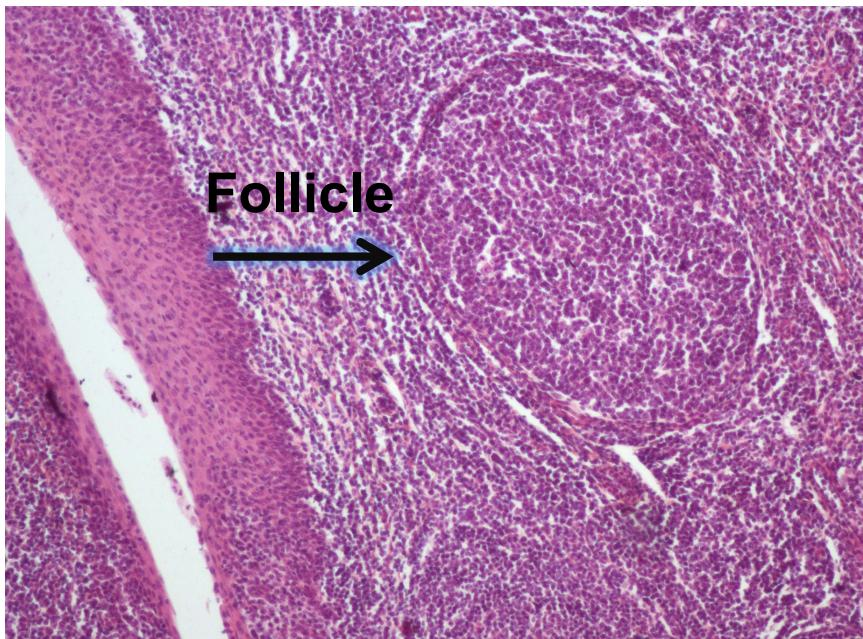
Palatine Tonsil

Q1- Identify:

✓ Palatine Tonsil

Q2- What is the type of epithelium ?

✓ Stratified squamous epithelium



Thank you for checking our work...

❖ Done By :

Ouf Al Oufy

❖ Edited By:

Amal Afrah

دعاد ما بعد المذاكرة
اللهم إني استودعك ما تعلمت و
فهمت و حفظت فرده إلي ساعة
حاجتي إليه ولا تنسني و افتح علي
اللهم فتحا مبينا يا نور السماوات و
الأرض.

For any correction, suggestion or any useful information do
not hesitate to contact us: Histology434@gmail.com