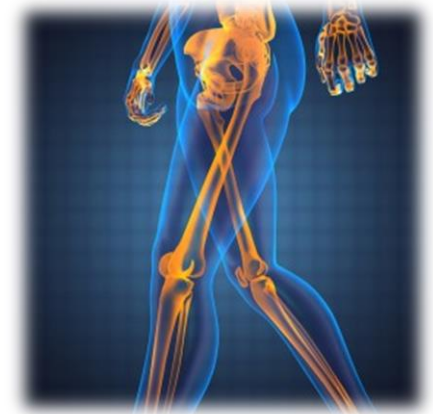


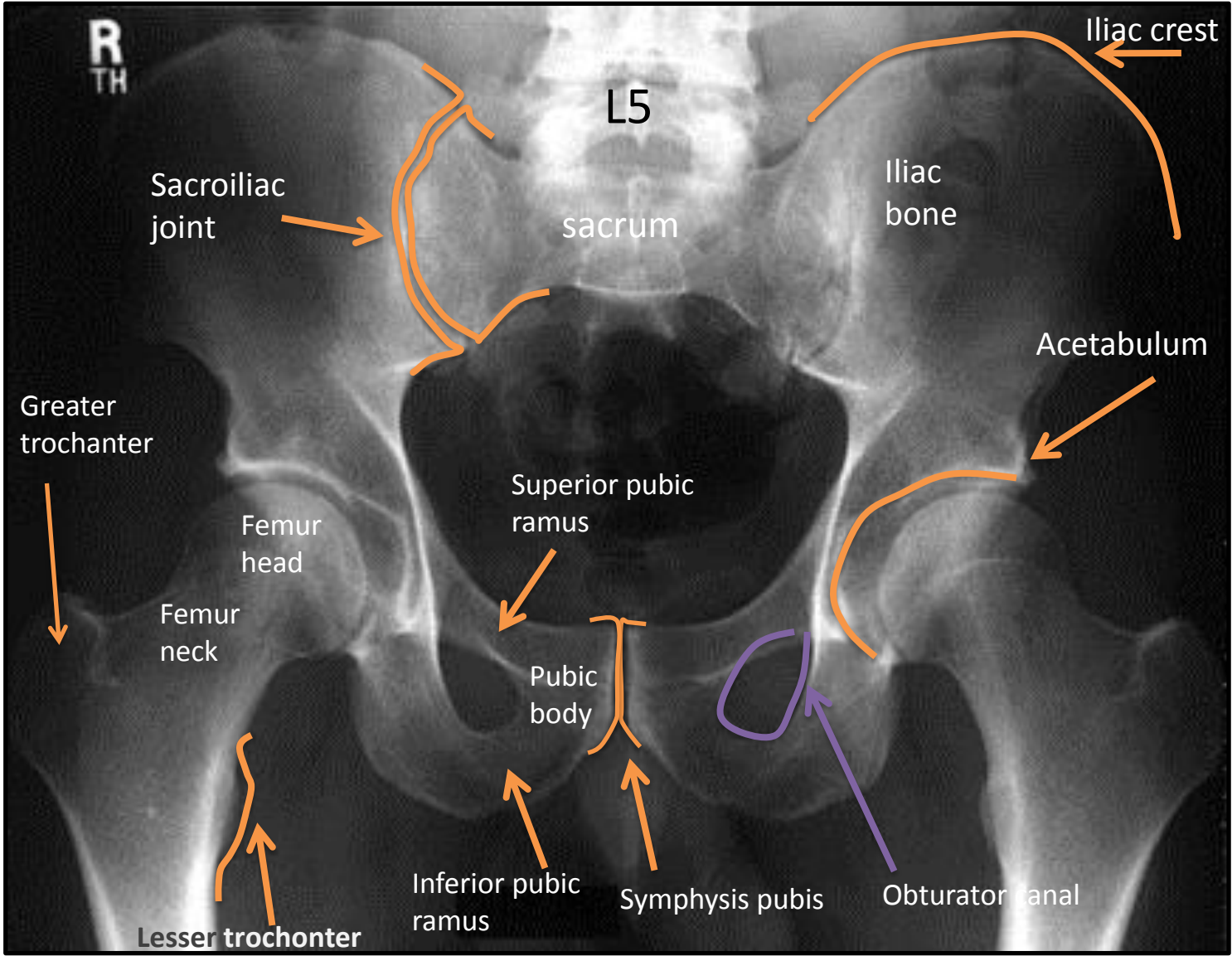
# RADIOLOGY



## LOWER LIMB

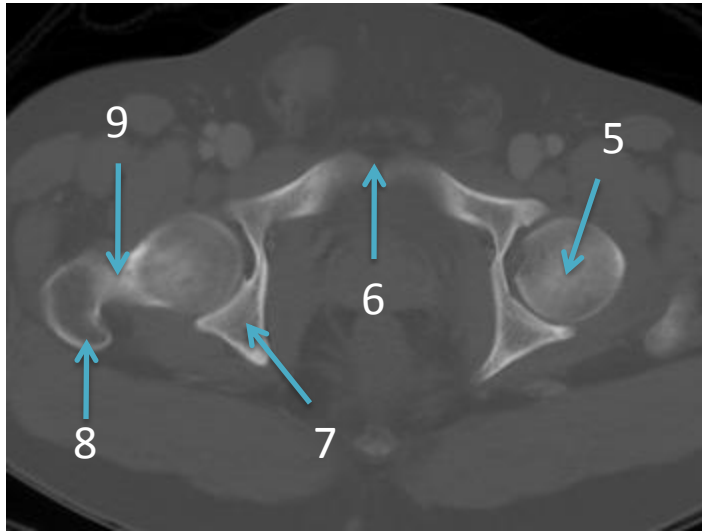
\* *Notes*

# PELVIS

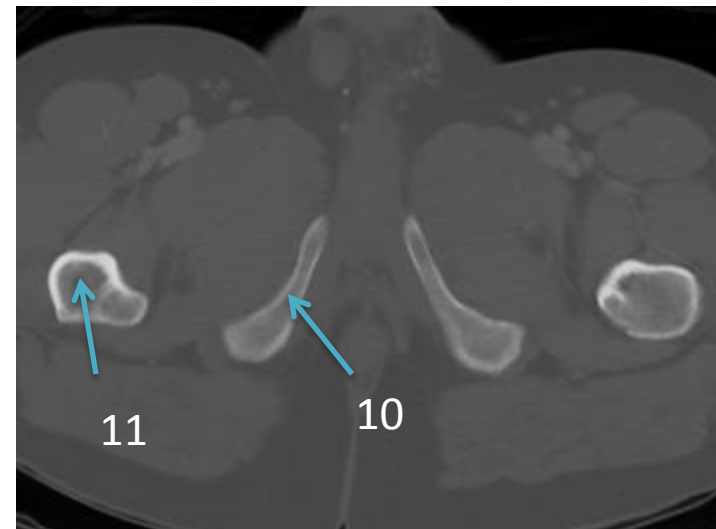


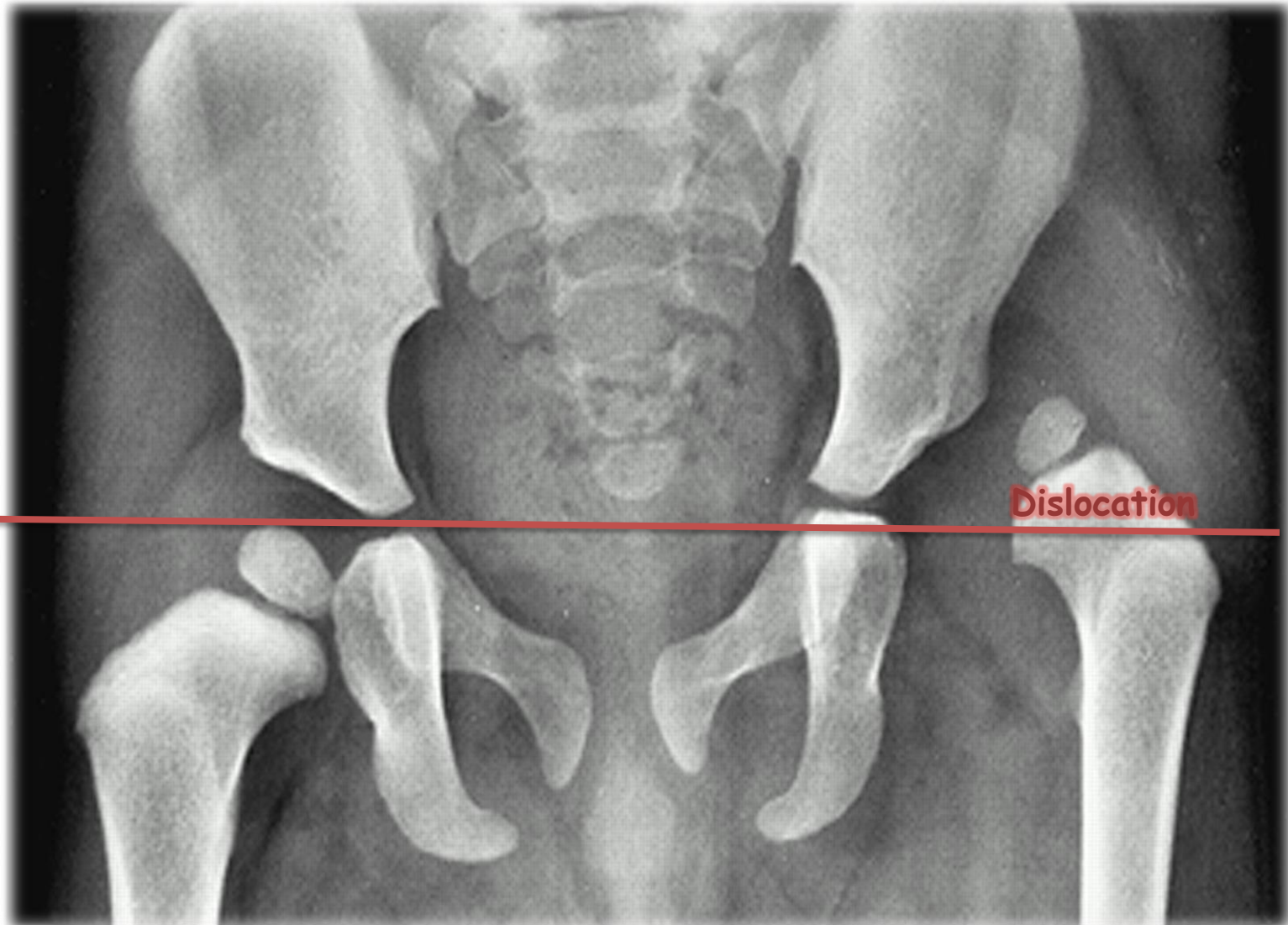
\* Leaser trochanter and greater trochanter with the head of femur looks like a gun.

# PELVIS



- 1- Sacroiliac joint
- 2- Sacrum
- 3- Sacral neural foramen
- 4- Iliac bone
- 5- Femur head
- 6- Symphysis pubis
- 7- Ischium
- 8- Greater trochanter
- 9- Femur neck
- 10- Pubic bone (inferior ramus)
- 11- Femur shaft



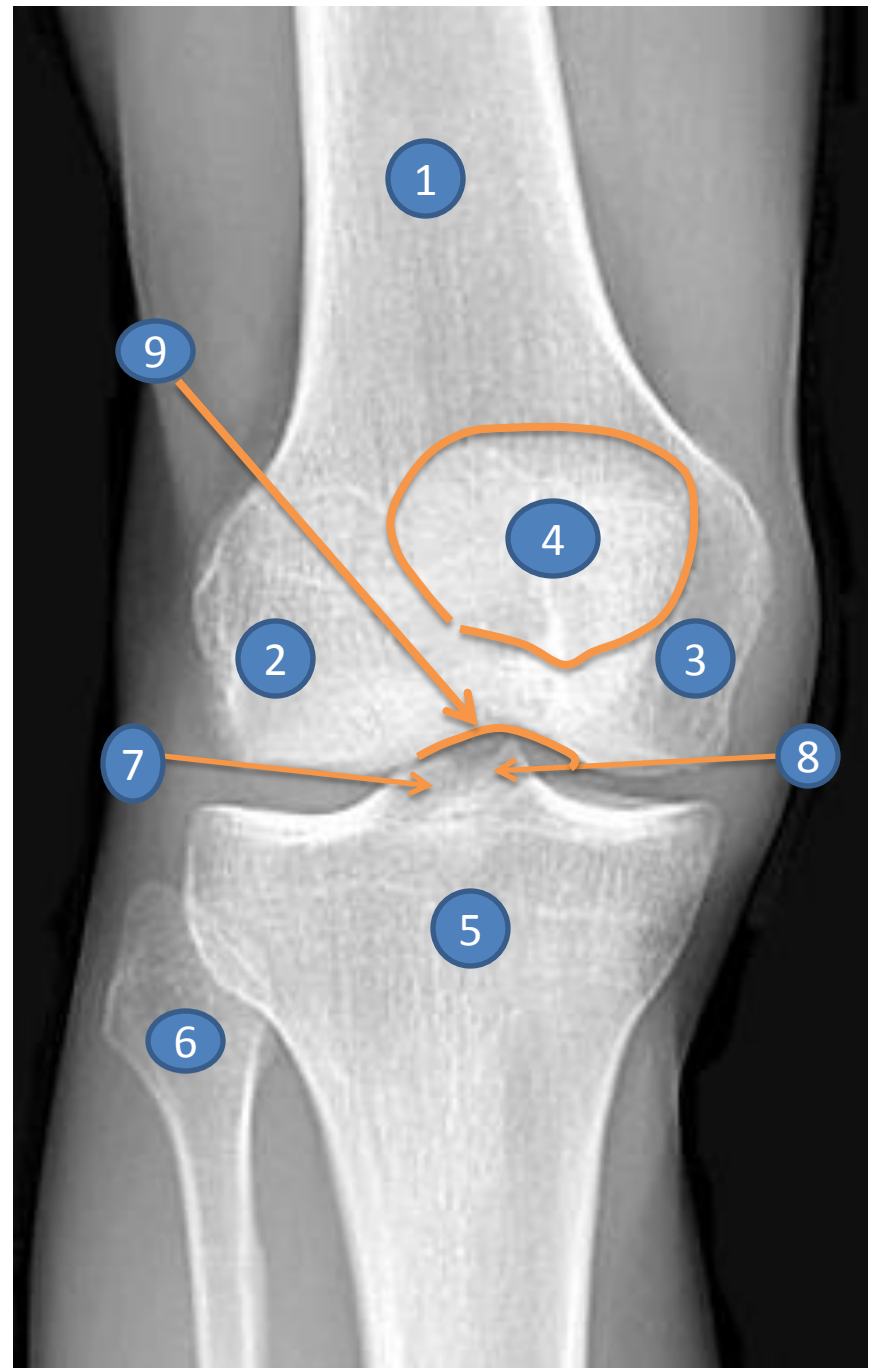


## CONGENITAL HIP DISLOCATION

\* Tip: in reading a MRI and XRAY images your right is left in picture and your left is write in right in the picture think of it as shaking someone's hand

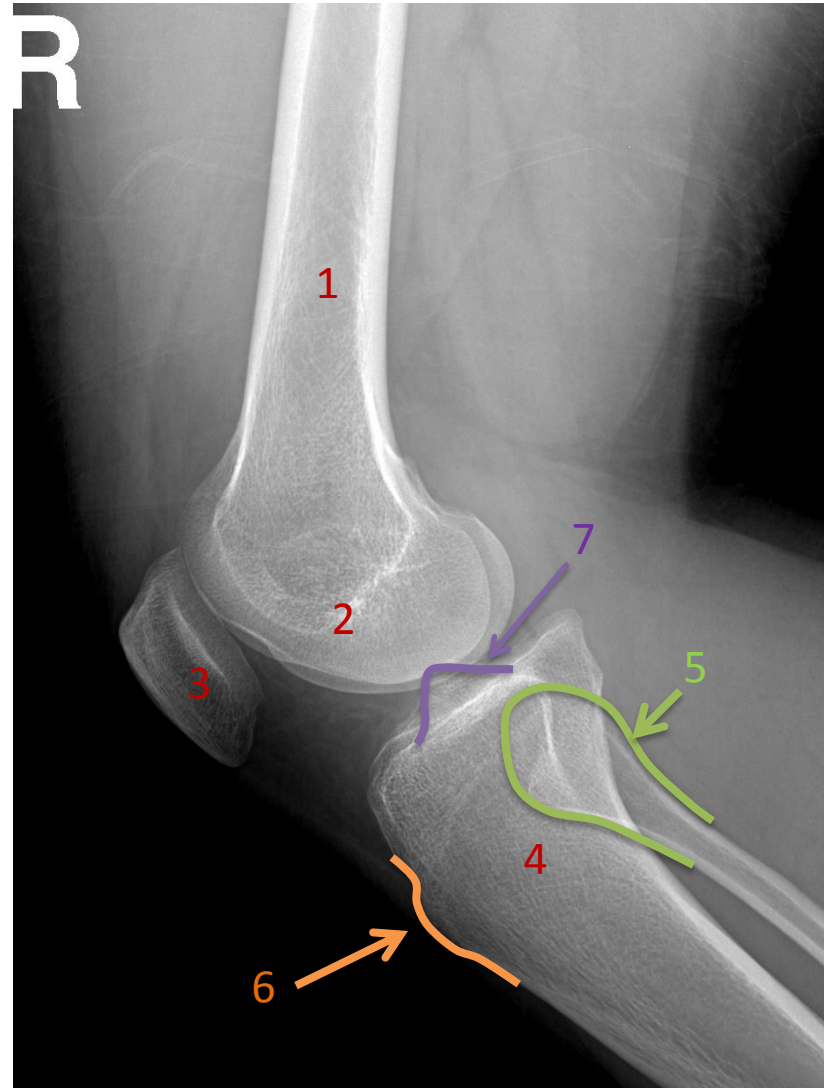
# KNEE

- 1- Femur
- 2- Lateral condyle
- 3- Medial condyle
- 4- Patella
- 5- Tibia
- 6- Fibula
- 7- Lateral tibial spine
- 8- Medial tibial spine
- 9- Intercondyle notch

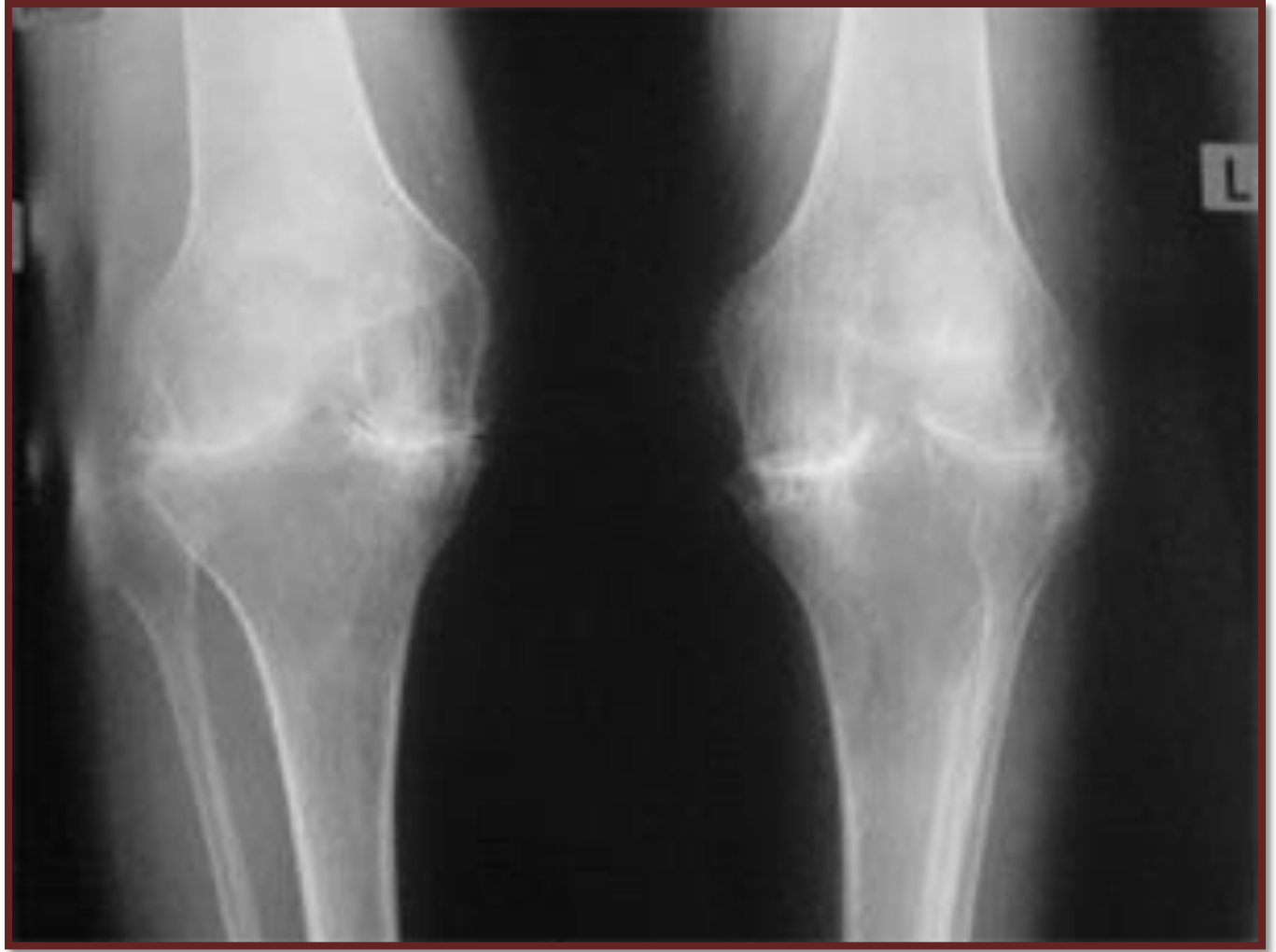


# KNEE

- 1- Femur
- 2- Femur condoyle
- 3- Patella
- 4- Tibia
- 5- Fibula
- 6- Tibial teberosity
- 7- Tibial spine



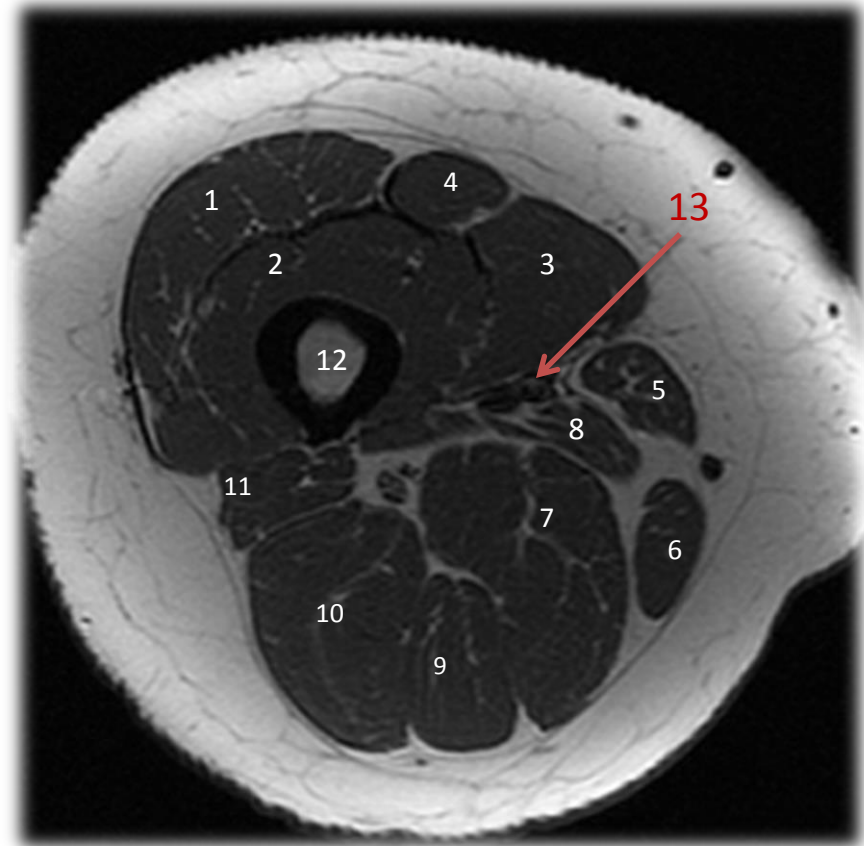
# KNEE



**SEVERE  
OSTEOARTHRITIS**

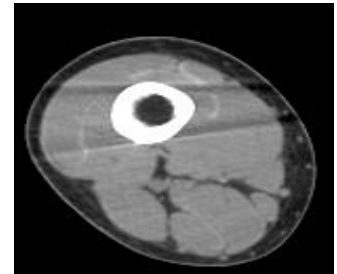
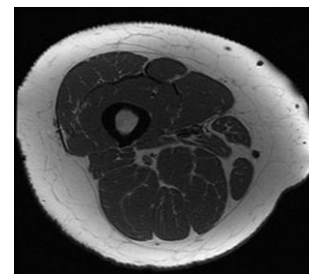
# THIGH

- 1- Vastus lateralis muscle
- 2- Vastus intermedius muscle
- 3- Vastus medialis muscle
- 4- Rectus femoris muscle
- 5- Sartorius muscle
- 6- Gracilis muscle
- 7- Adductor magnus muscle
- 8- Adductor longus muscle
- 9- Semimembranosus muscle
- 10- Semitendinosus Muscle
- 11- Biceps femoris muscle
- 12- Femur
- 13- Femoral artery



MRI

CT scan

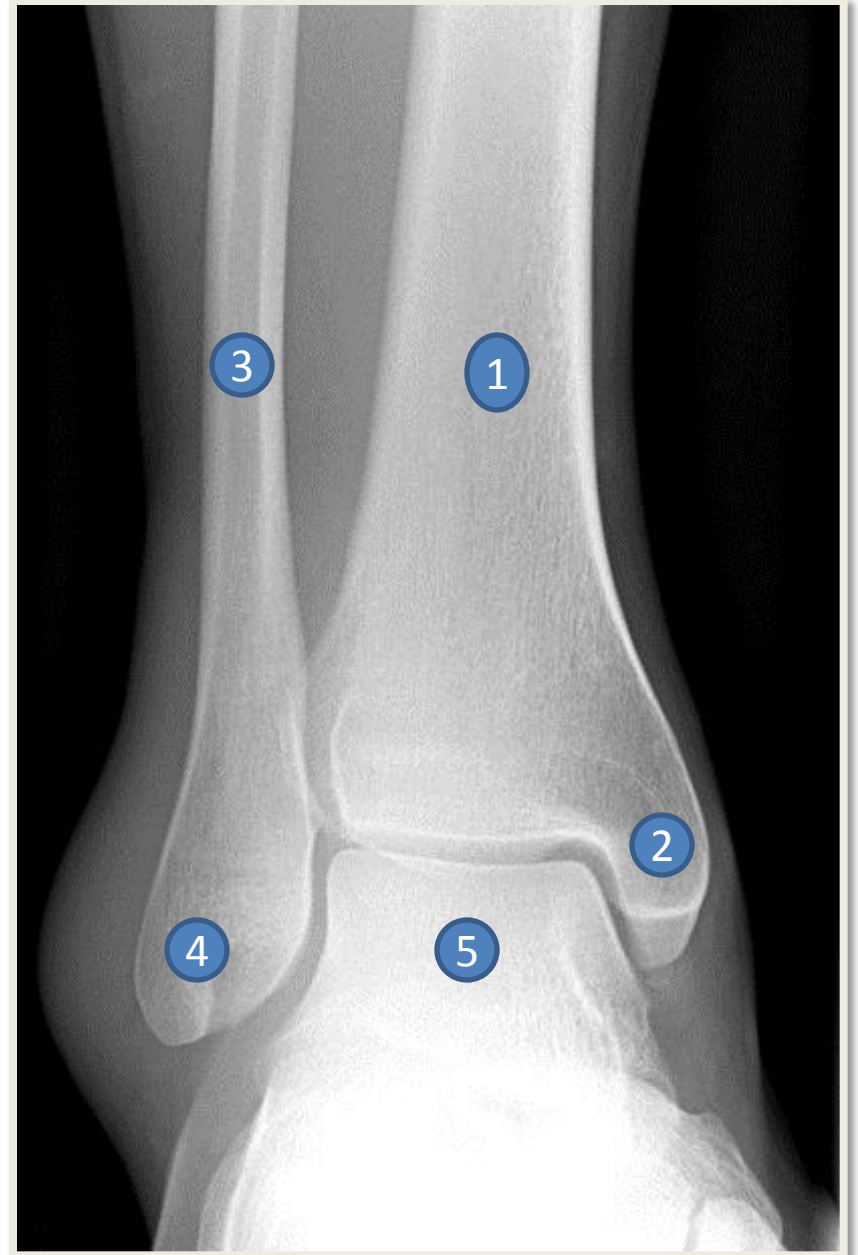


\*\*\*In radiology only : you need to memorize how the following muscles look like in MRI image



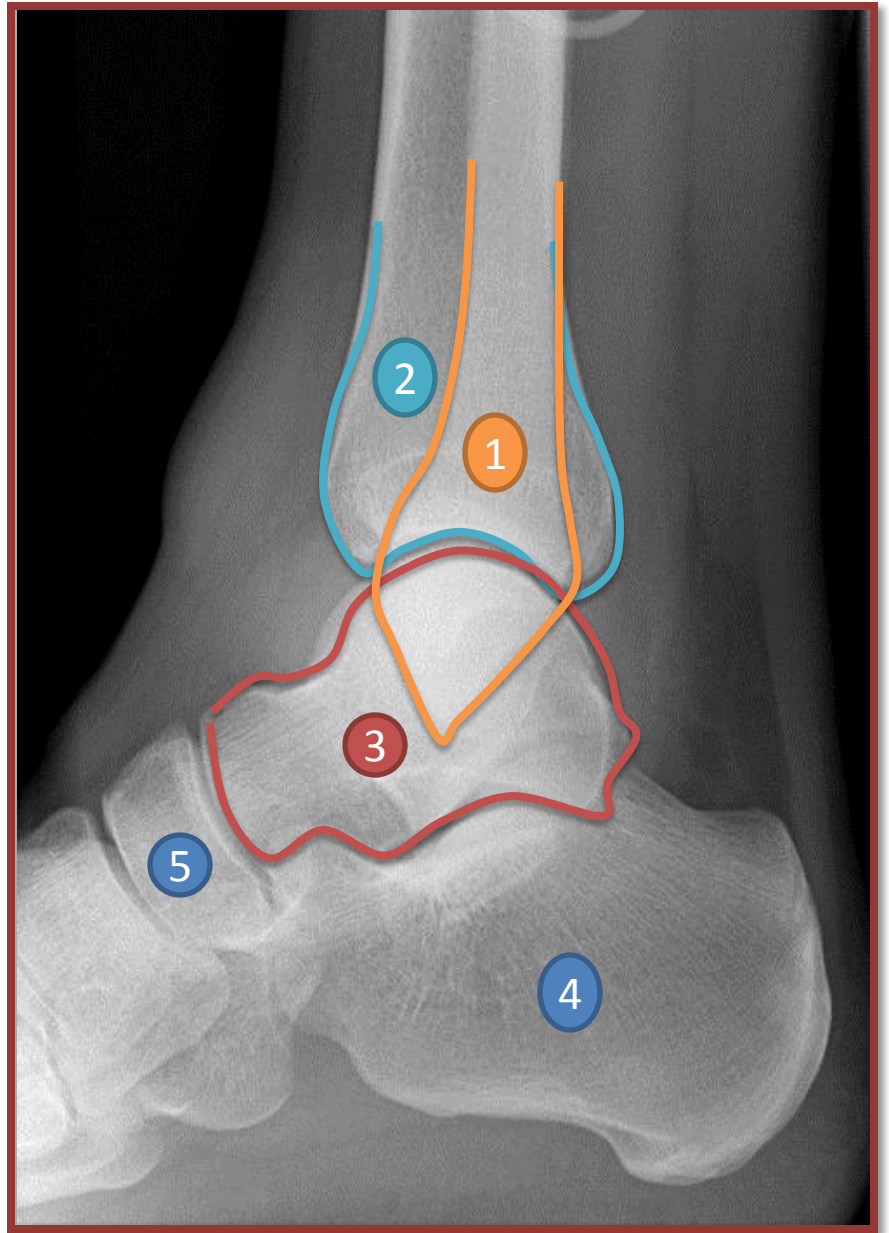
# ANKLE

- 1- Tibia
- 2- Medial malleolus
- 3- Fibula
- 4- Lateral malleolus
- 5- Dome of talus



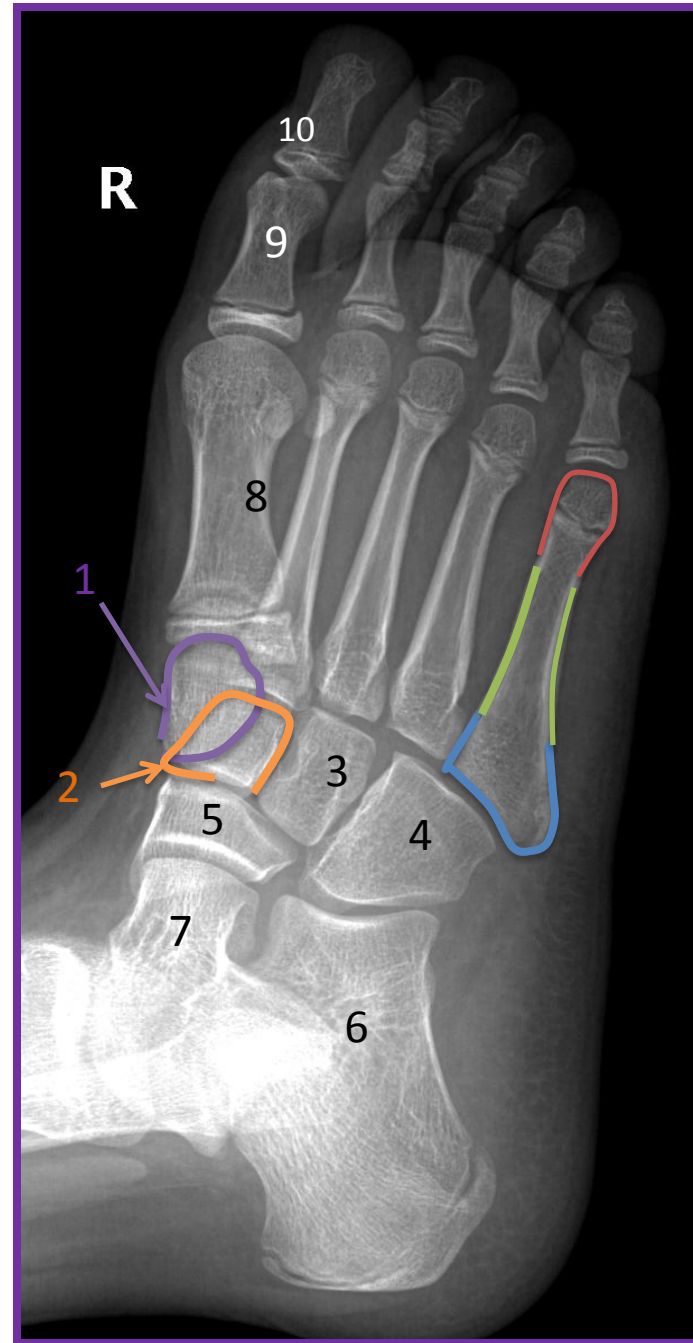
# ANKLE

- 1- Fibula
- 2- Tibia
- 3- Talus
- 4- Calcaneus
- 5- Navicular

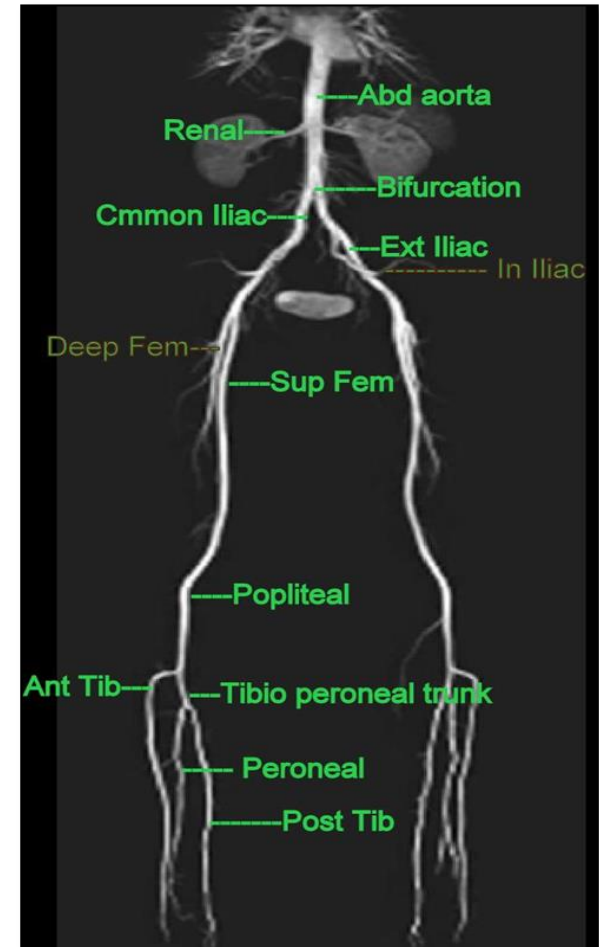
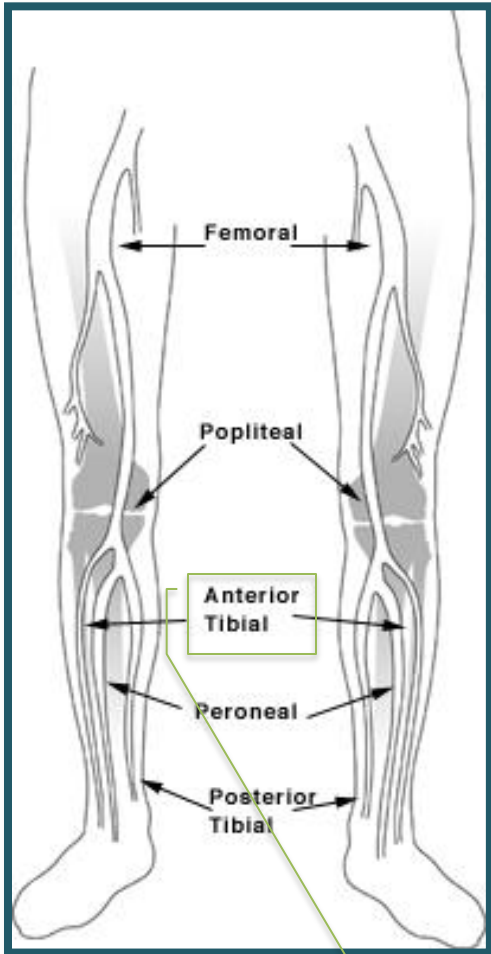


# FOOT

- 1- Medial cuneiform bone
- 2- Intermediate cuneiform bone
- 3- Lateral cuneiform bone
- 4- Cuboid bone
- 5- Navicular bone
- 6- Calcaneal bone
- 7- Talus
- 8- Metatarsal bone (1<sup>st</sup> toe)
- 9- Proximal phalanx (1<sup>st</sup> toe)
- 10- Distal phalanx (1<sup>st</sup> toe)



# LOWER LIMB ARTERIES



\* Anterior tibial artery looks like hooky stick.

# *LOWER LIMB ARTERIES*

- 1- Popliteal artery
- 2- Anterior tibial artery
- 3- Peroneal artery
- 4- Posterior tibial artery



Good Luck!

Done by radiology team 434 ..



ابتهاى آل مشاوى  
الهام الغامدى  
لينة الجرف  
سارة السلمان  
هدىل السلمى

عبدالرحمن الكاف  
سلمان القزلان  
عبدالله السهللى  
عبدالله الهوىدى