

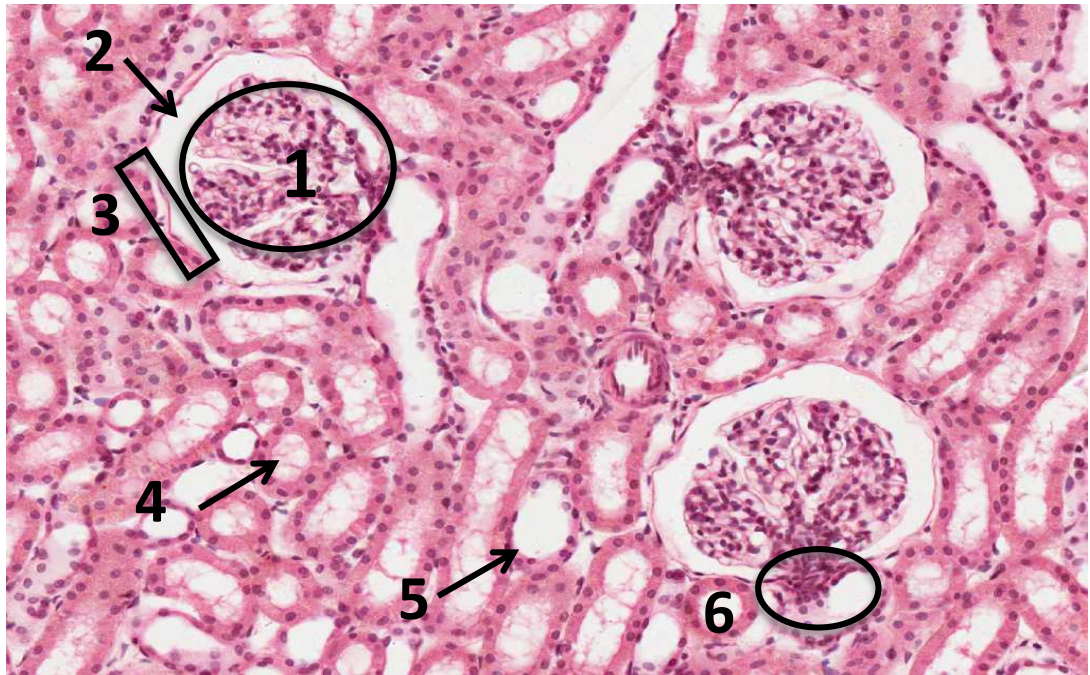


Renal Histology

OSPE



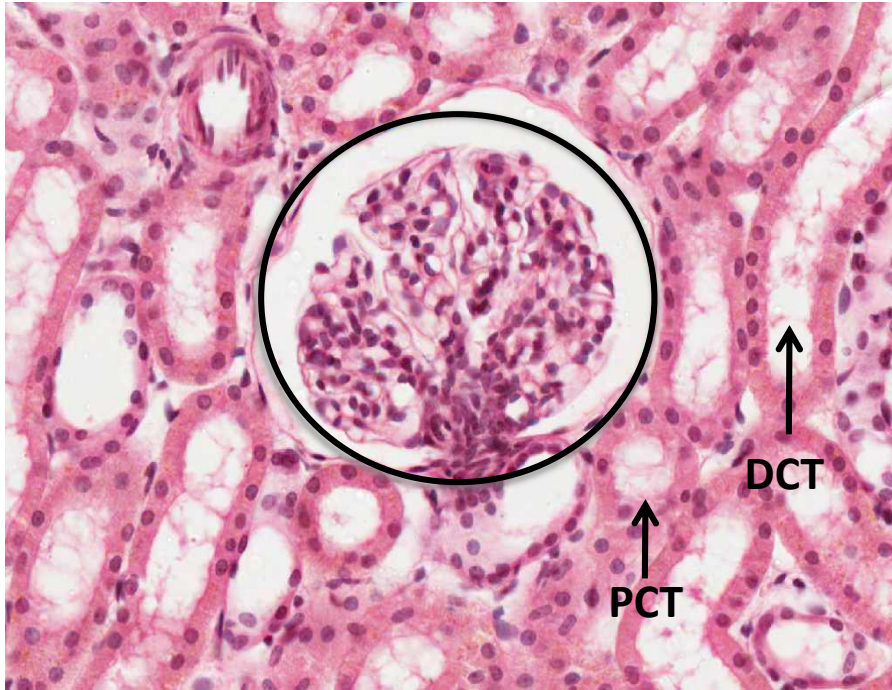
Cortex of the Kidney



➤ Structures:

1. Glomerulus.
2. Urinary space.
3. Parietal layer.
4. Proximal convoluted tubules with brush border.
5. Distal convoluted tubules.
6. Juxta- glomerular apparatus.

Renal Corpuscle



➤ Structures:

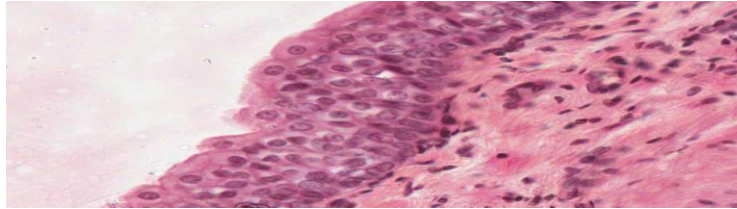
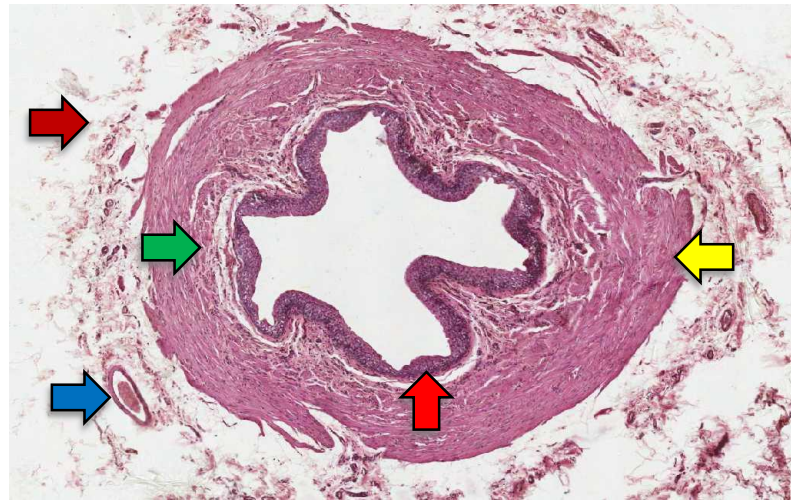
1. Glomerulus (fenestrated capillaries "without diaphragm")
2. Bowman's capsule (Parietal layer) and Podocytes
3. Mesangial cells: Intra-glomerular cells

➤ Cells:

- Mesangial cells
- **Glomerular endothelial cells**
- Podocytes

Ureter

- Transitional epithelium
- Inner longitudinal layer
- Outer circular
- Blood vessels
- Adventitia



Layers

Mucosa

Transitional Epithelium

Lamina Propria

Muscularis

"Muscle coat"

Upper 2/3:

- Inner Longitudinal
- Outer Circular

Lower 1/3:

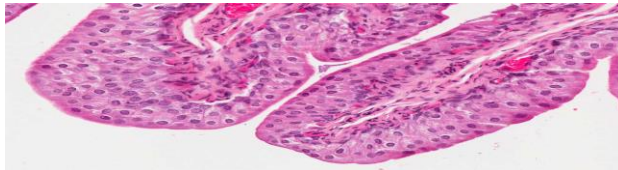
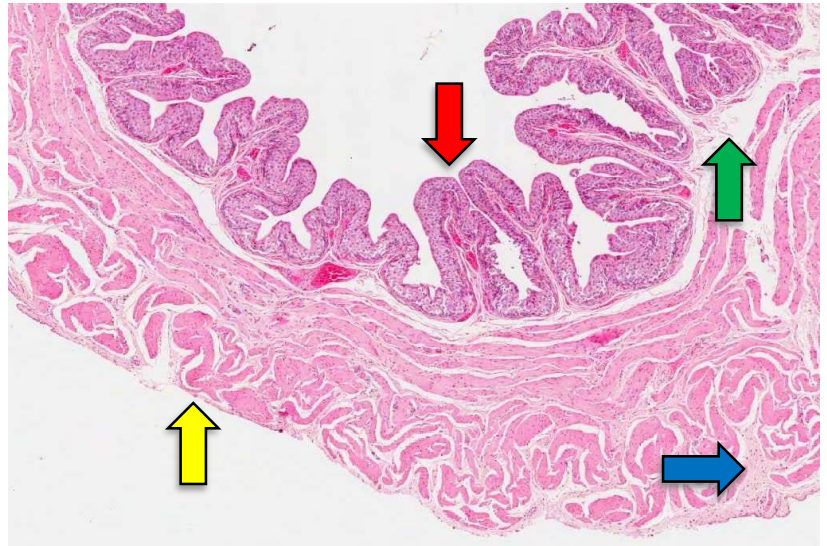
- Inner Longitudinal
- Middle Circular
- Outer Longitudinal

Adventitia

NO Serosa

Urinary Bladder

- Transitional epithelium
- Lamina propria
- Connective tissue
- Mesothelium



Layers

Mucosa

Transitional Epithelium

Lamina Propria

Muscularis

"3 layers of smooth muscle coat"

Inner Longitudinal

Middle Circular

Outer Longitudinal

Adventitia

Serosa

Done By:

Ouf Al Oufy

Edited By:

Amal Afrah

Motivation Corner



Thank you for checking our work