



# \*Anatomy

## OSPE revision

Based on 434 teams' work

# \* Before you begin

قبل لا تبدؤون بالسلايدات:

1- فرقو بين ال

(Name و Type)

2- انتبهوا للسبيلنق, على الأقل لازم يكون قريب من الكلمة الصح فحاولوا تكتبون مو بس حفظ وتسميع

Colour

Code:

■ Extra notes

■ Answers

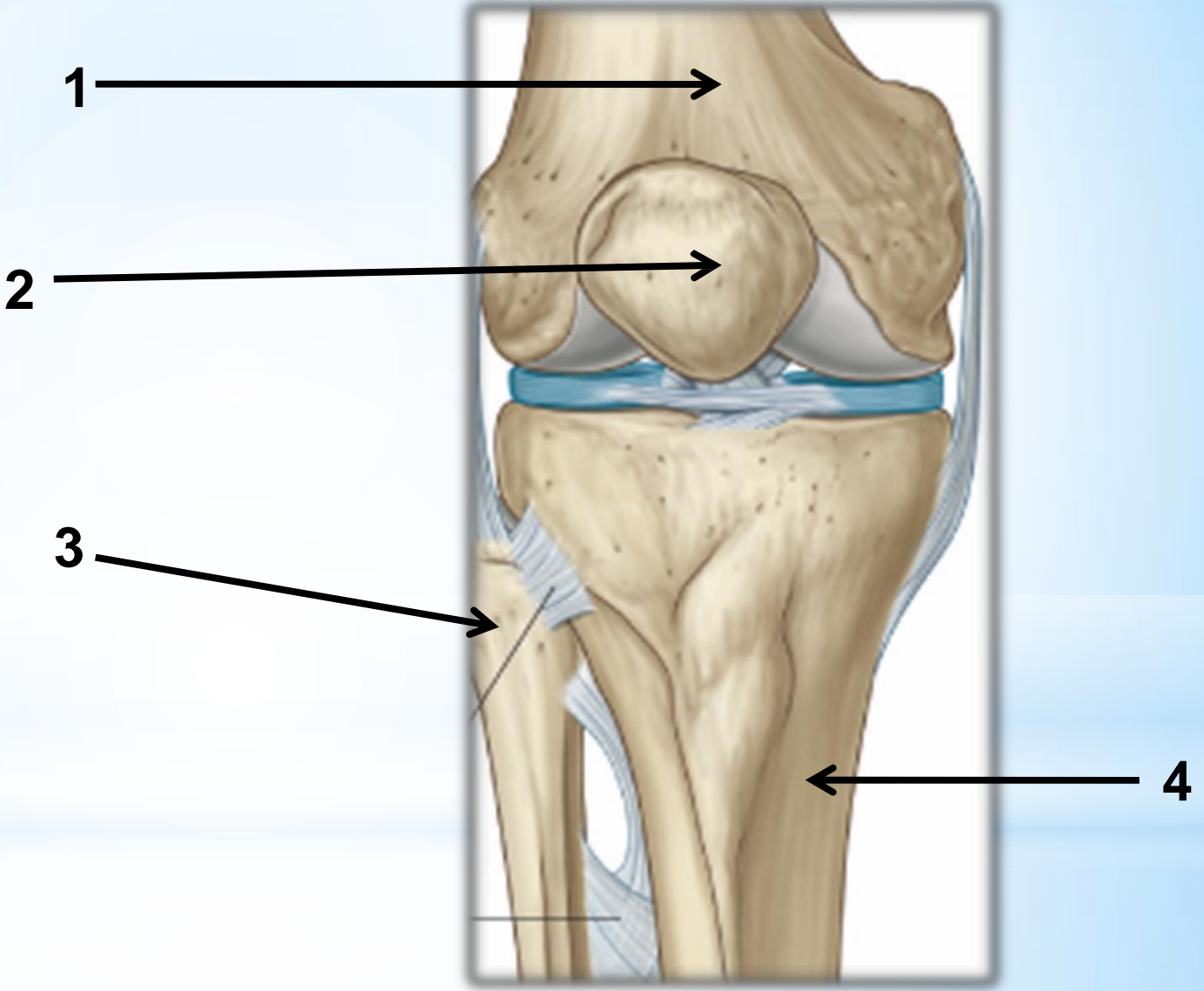
الاحمر = نبه عليه الدكتور

# Case No.1

Identify the following:

- The labeled bones:

- 1-
- 2-
- 3-
- 4-



# Case No.1

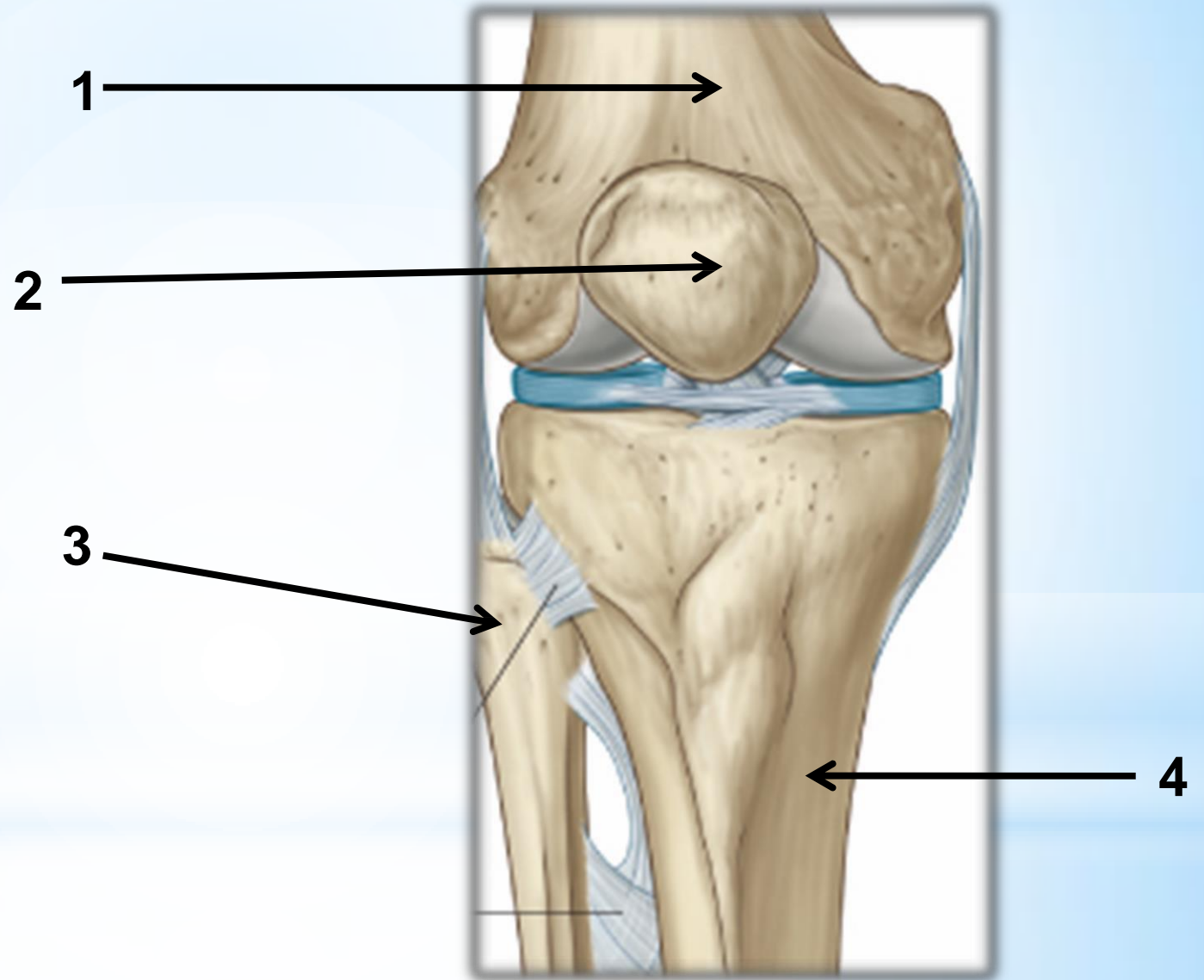
## Answer

Identify the following:

•The labeled bones:

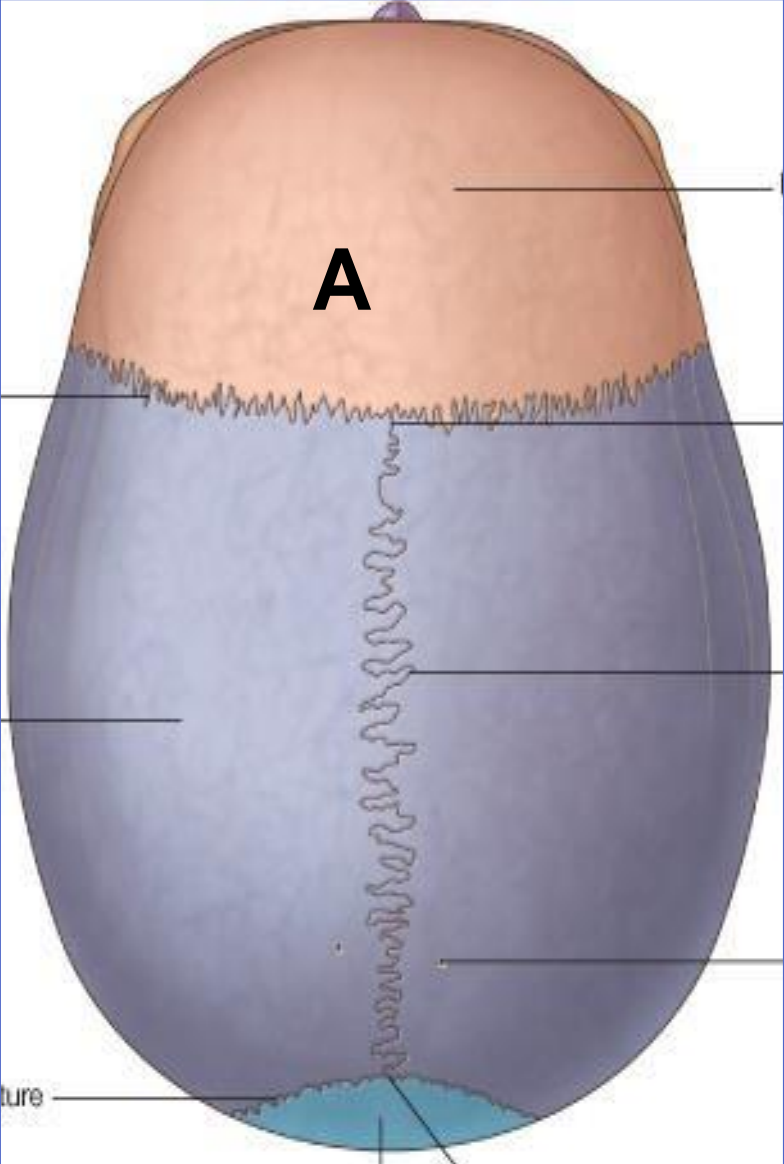
- 1 **Femur**
- 2 **Patella**
- 3 **Fibula** (lateral)
- 4 **Tibia** (medial)

\* Tibia is bigger than fibula



# Case No.2

Identify:  
The type of the bone marked **A**:



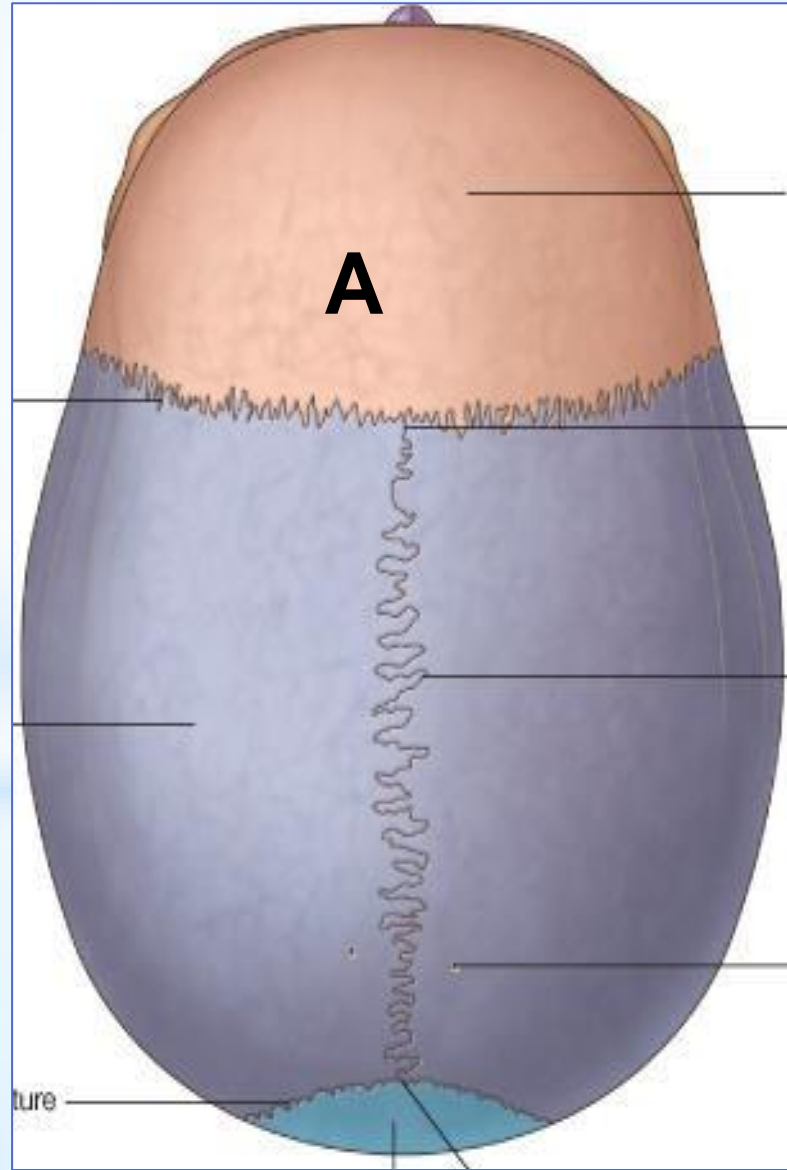
# Case No.2

## Answer

Identify:

The type of the bone marked A:

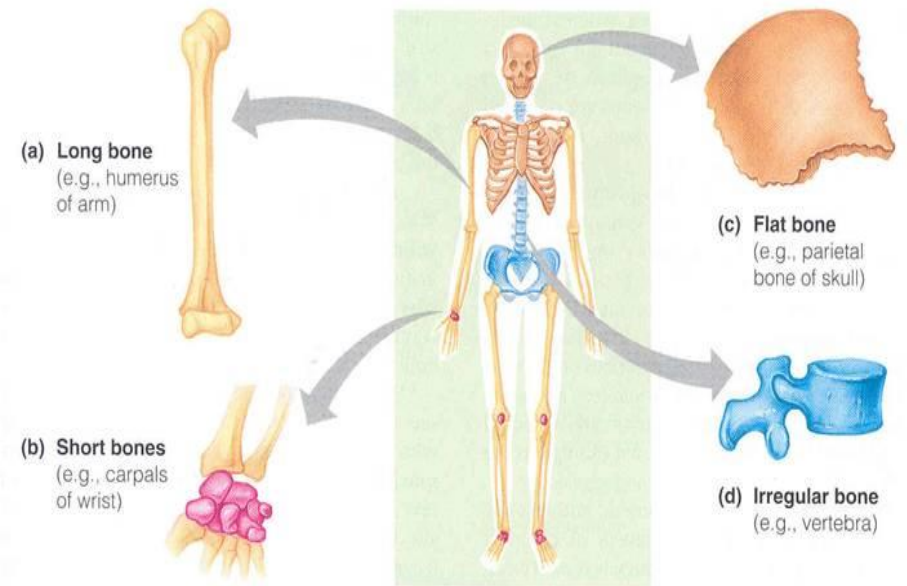
**Flat bone**



Remember:

Types of bones:

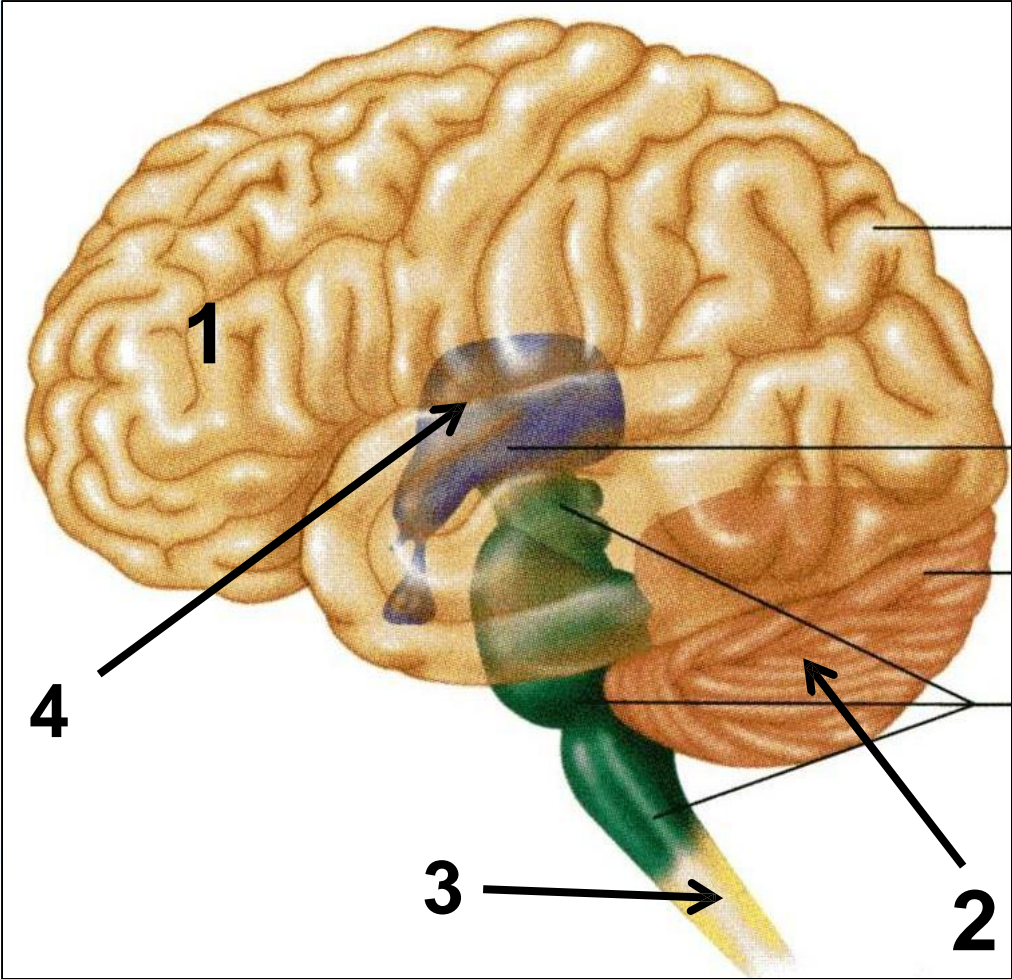
- Flat bone (like this example)
- Irregular bone (vertebra)
- Long (humerus of arm)
- Short (carpals of wrist)
- **Sesamoid (patella)**
- **Pneumatic** (العظام الهوائية مثل الموجود بقلب الجمجمه)



# Case No.3

Identify the labeled structures:

- 1.
- 2.
- 3.
- 4.

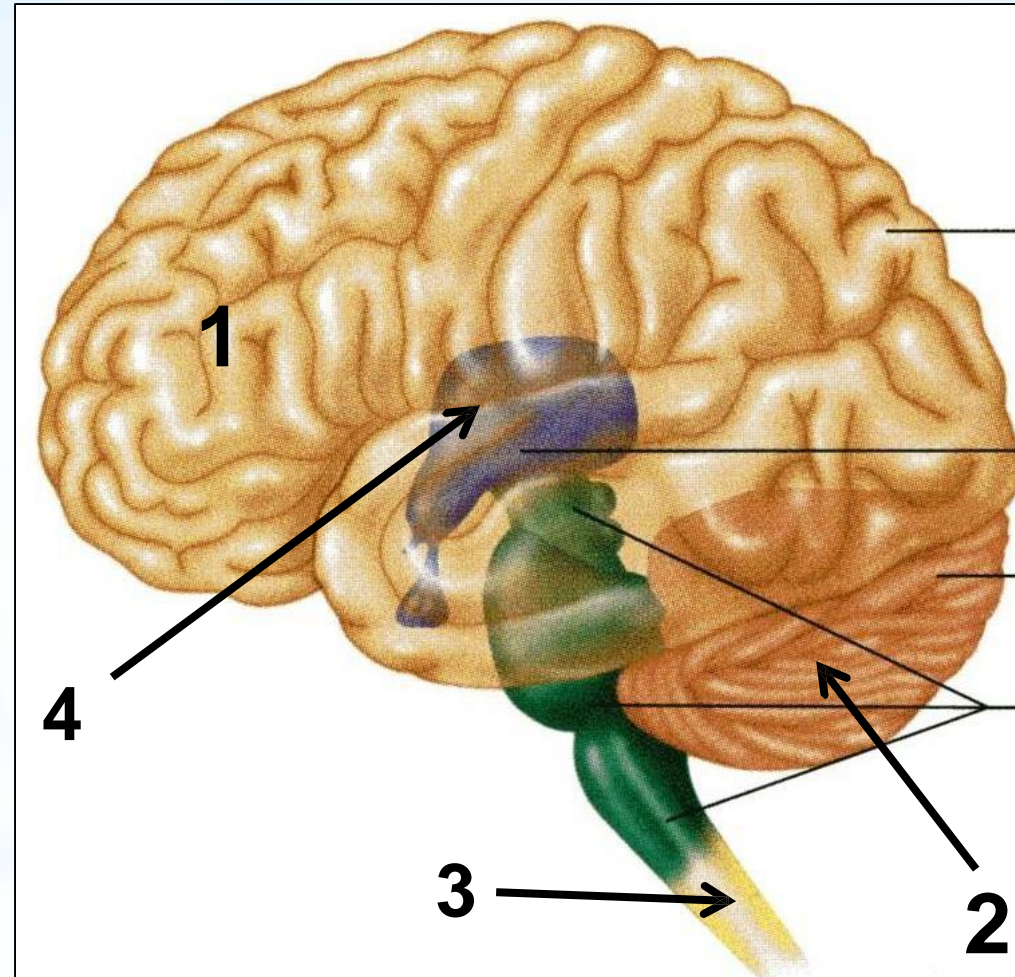


# Case No.3

## Answer

Identify the labeled structures:

1. Cerebrum
2. Cerebellum
3. Spinal cord
4. Diencephalon

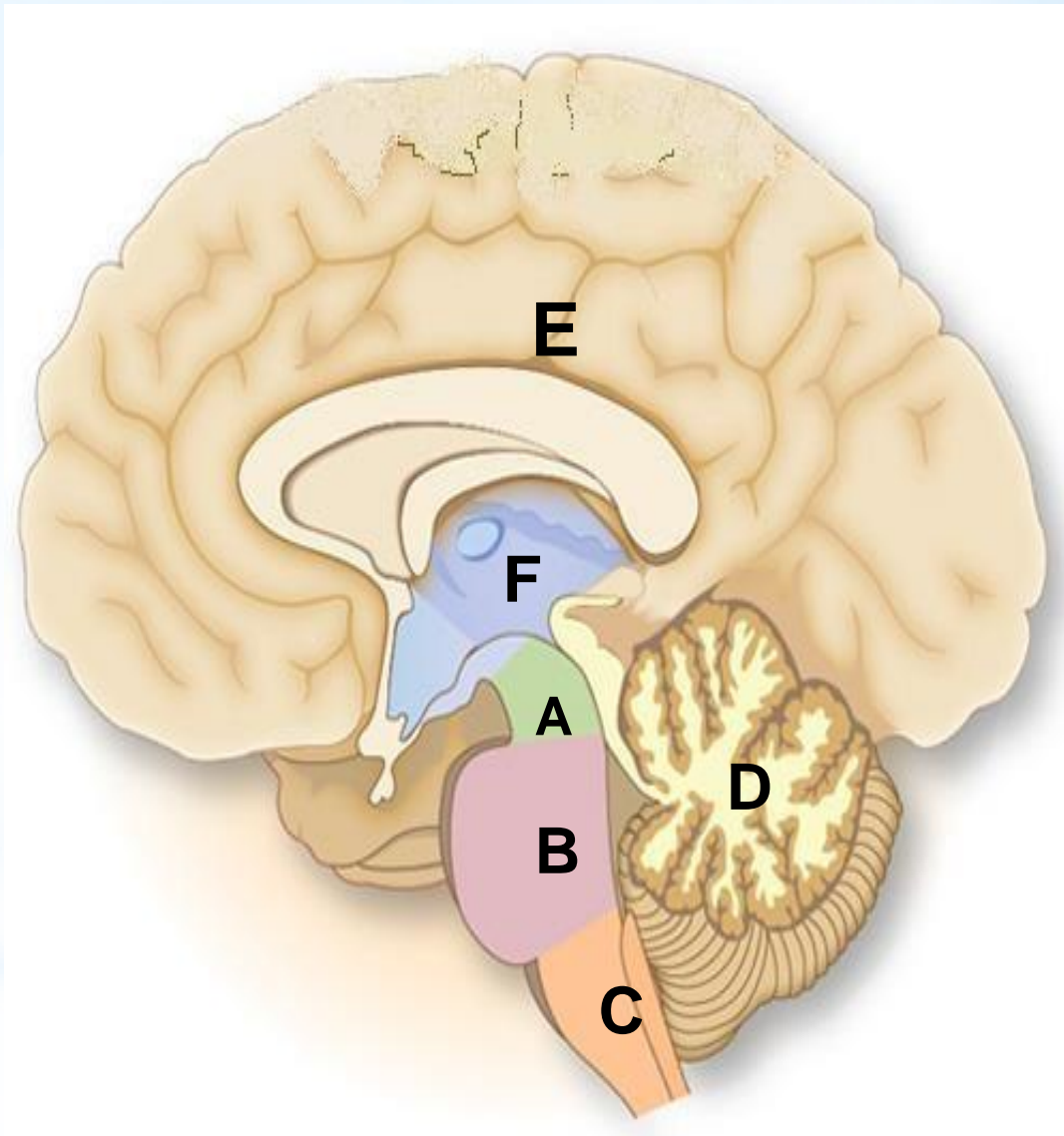




# Case No.4

Identify parts of the brain marked A, B, C, D, & E:

- A.
- B.
- C.
- D.
- E.
- F.



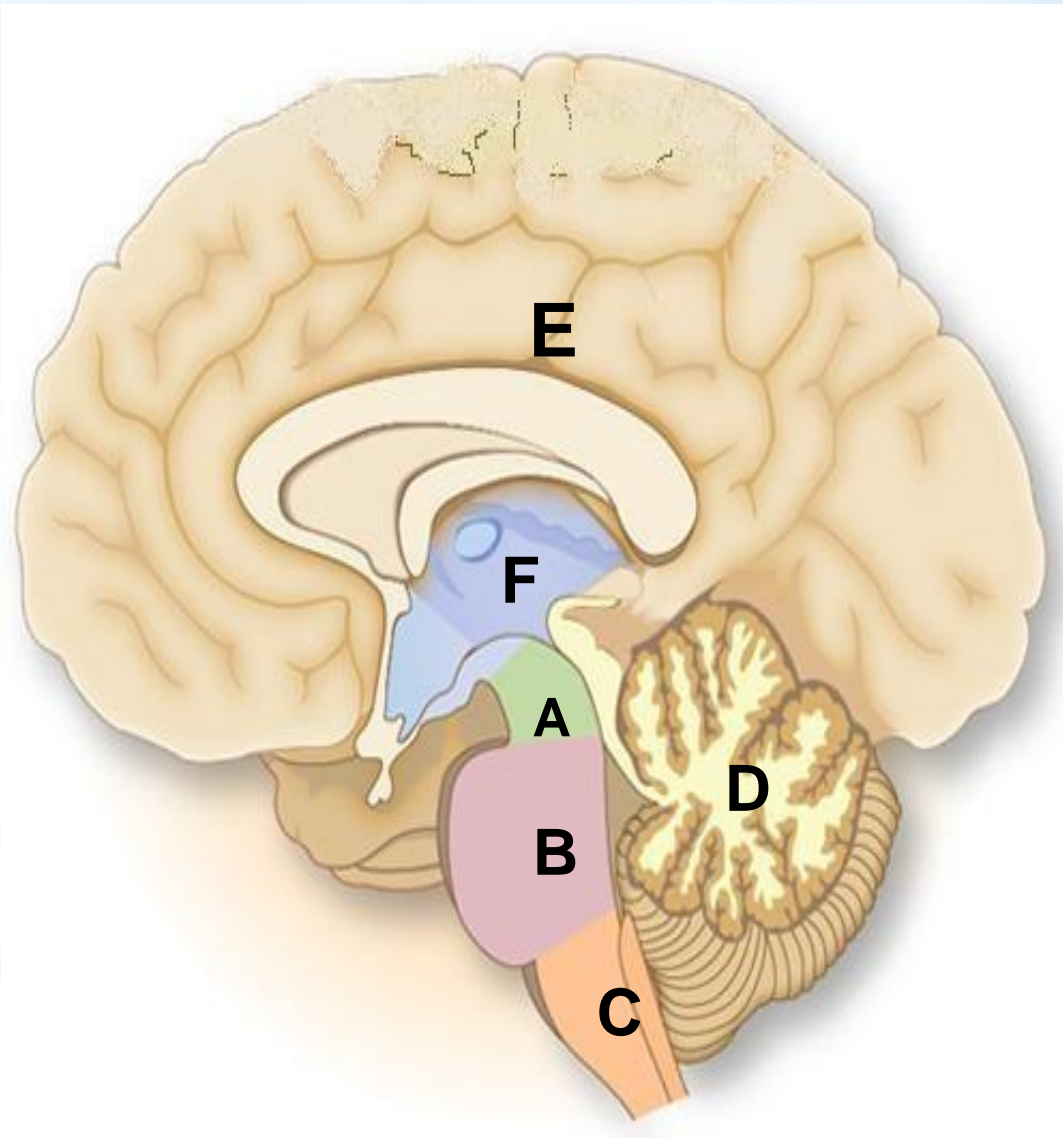
# Case No.4

## Answer

Identify parts of the brain marked A, B, C, D, & E:

- A. Midbrain
- B. Pons
- C. Medulla oblongata
- D. Cerebellum
- E. Cerebrum
- F. Diencephalon

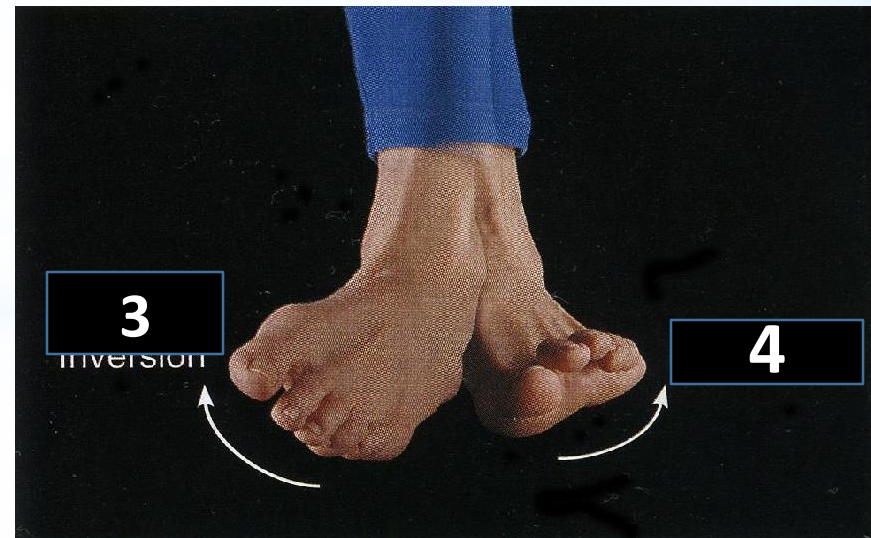
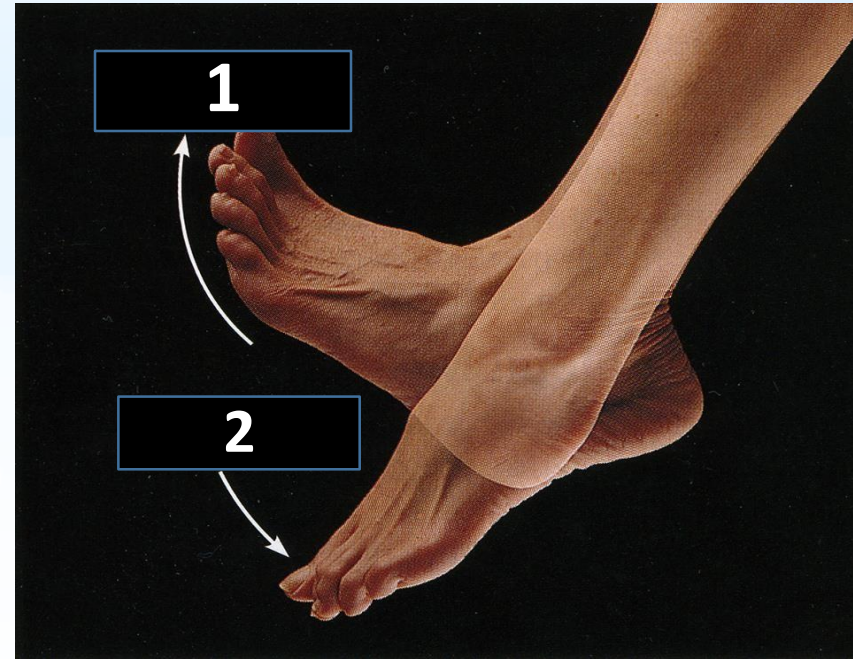
A + B + C = Brain Stem



# Case No.5

Identify these movements:

- 1.
- 2.
- 3.
- 4.

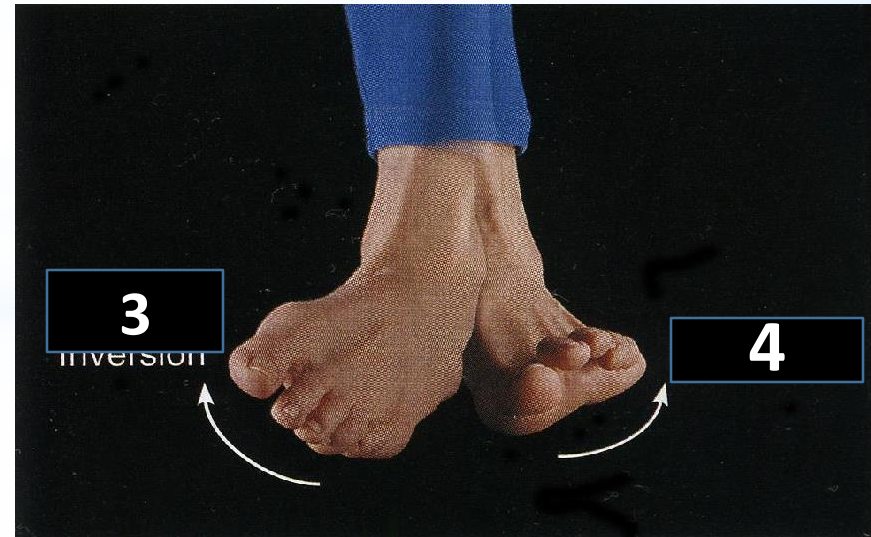
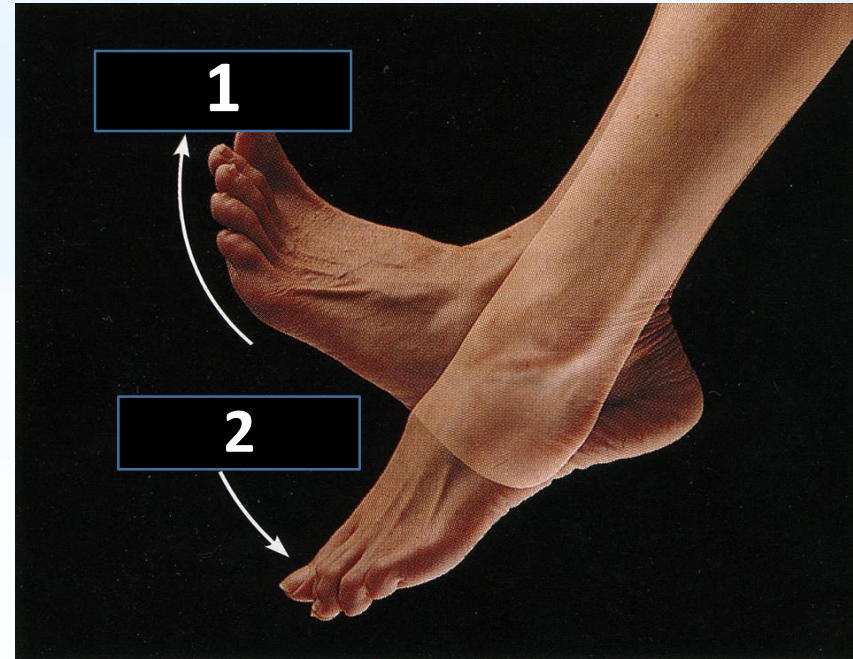


# Case No.5

## Answer

Identify these movements:

1. **Dorsiflexion** (ترفع رجلك عن)
2. **Plantarflexion** (تدعس على البنزين / الفرامل)
3. **Inversion** (Inversion ; inwards)
4. **Eversion** (Outwards)

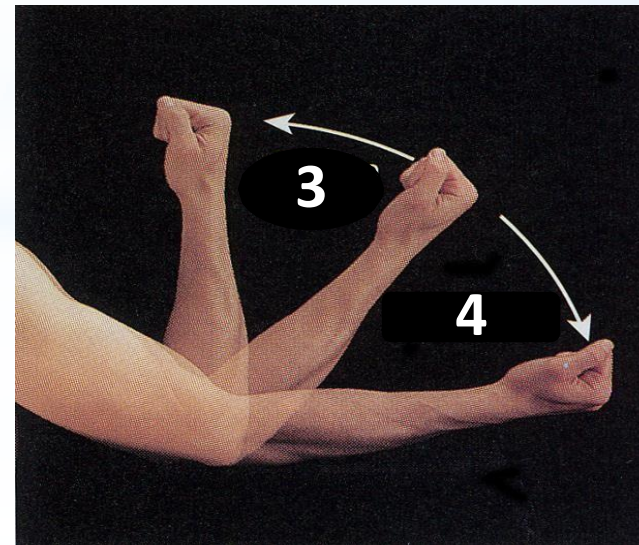
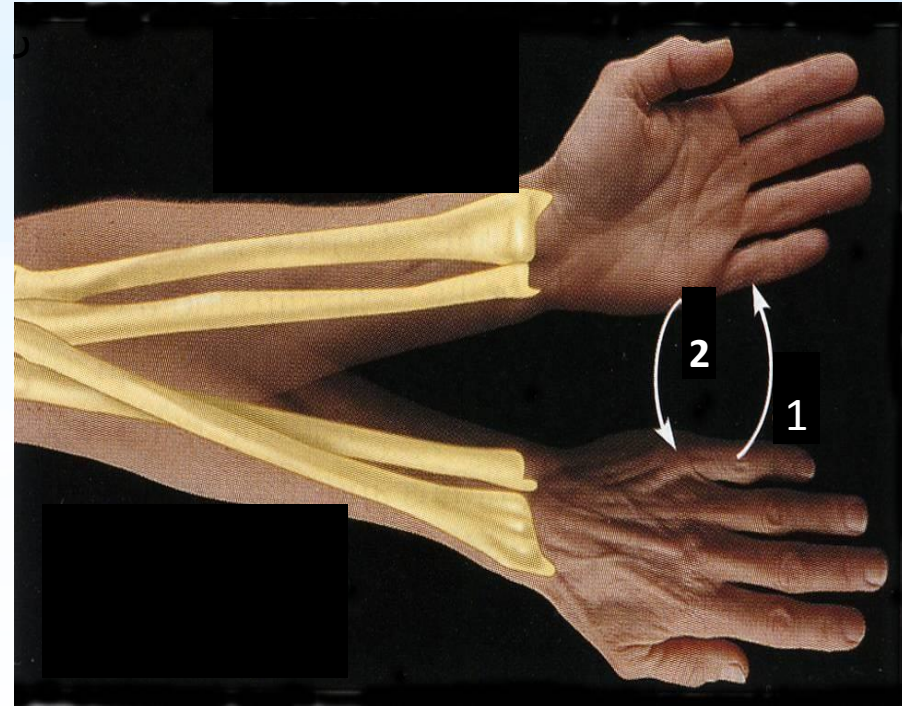


# Case No.6

Identify these movements:

- 1.
- 2.
- 3.
- 4.

Identify the lateral bone in figure 1



# Case No.6

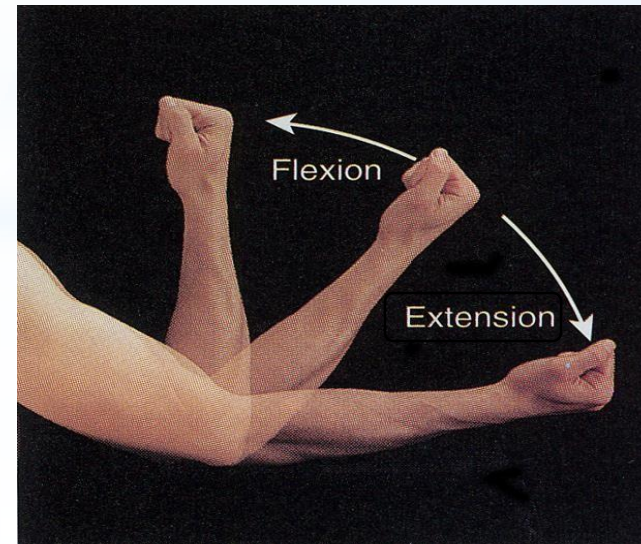
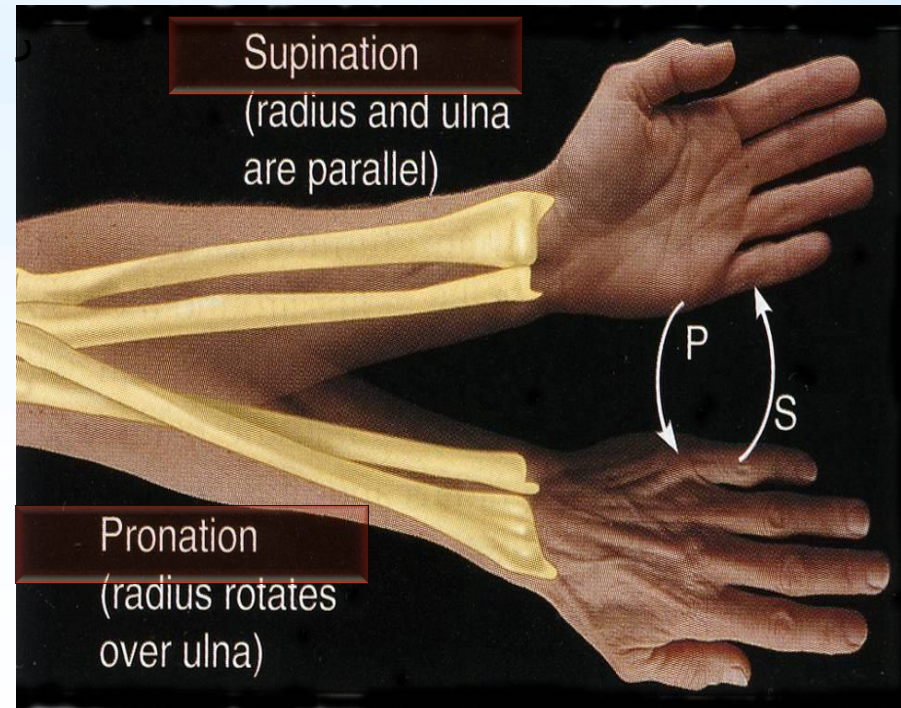
## Answer

Identify these movements:

1. **Supination** (الابهام يطلع لبرا)
2. **Pronation** (الابهام يدخل لجوا)
3. **Flexion**
4. **Extension**

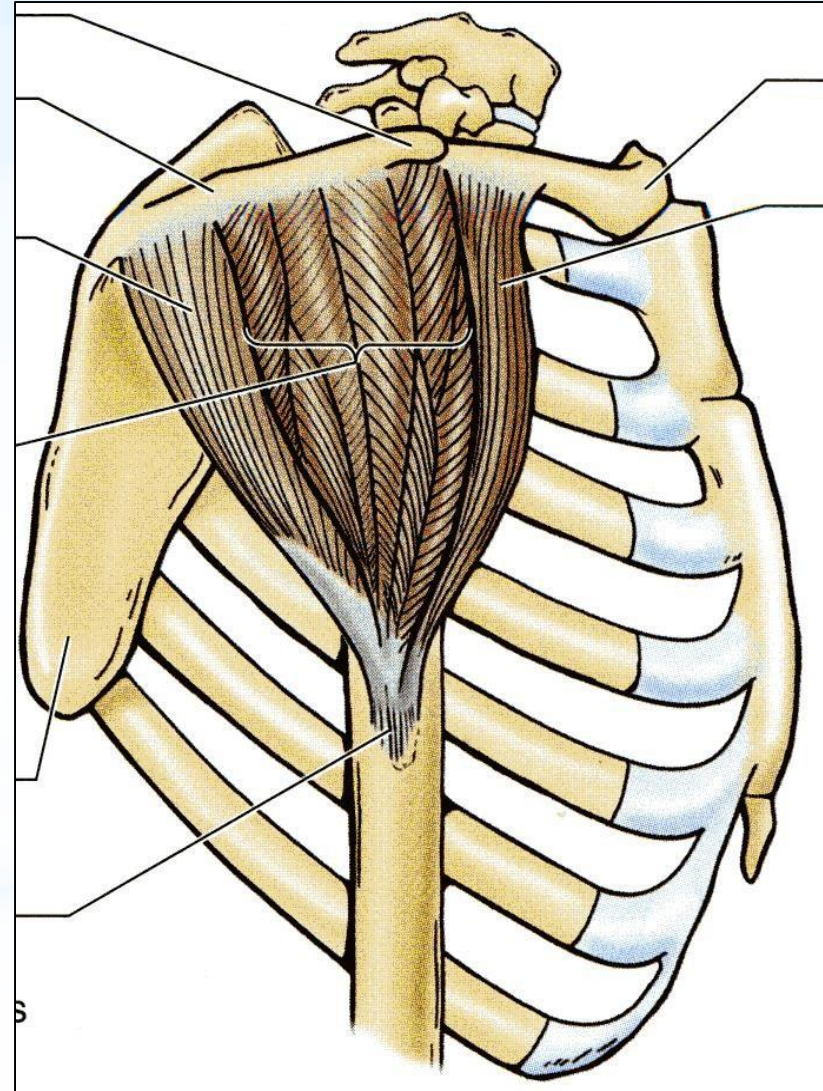
Identify the lateral bone in figure 1:

**Radius**



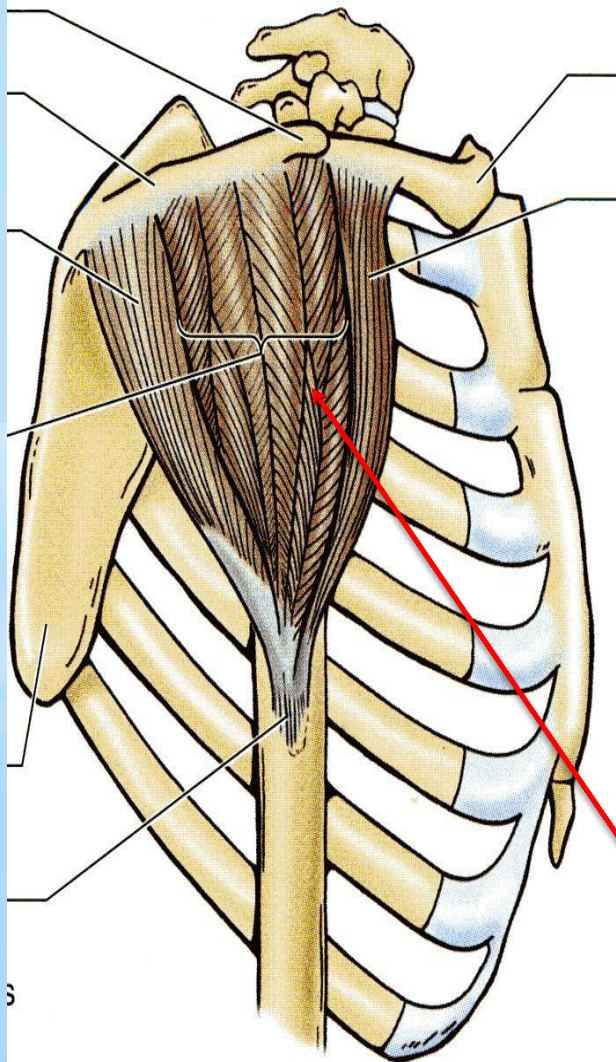
# Case No.7

Identify the type of this skeletal muscle:



# Case No.7

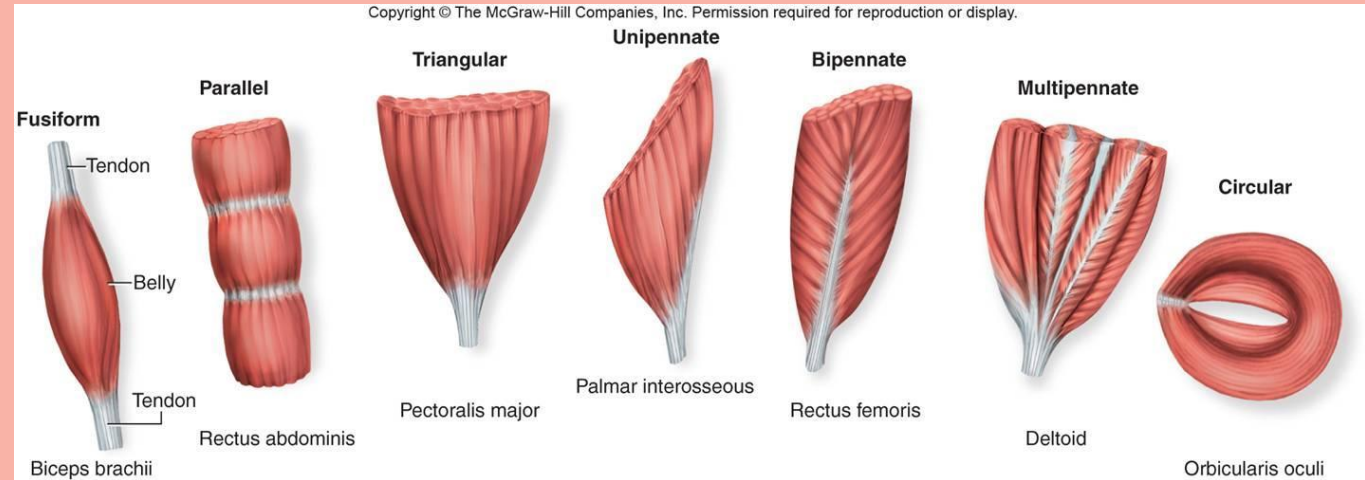
## Answer



Remember:

Types of skeletal muscles :

- 1- Parallel
- 2- pennate
  - Unipennate
  - Bipennate
  - Multipennate
- 3- Fusiform
- 4-Triangular
- 5-Circular



\*مهم نحفظ انواع العضلات مع الامثلة

Identify the type of this skeletal muscle:

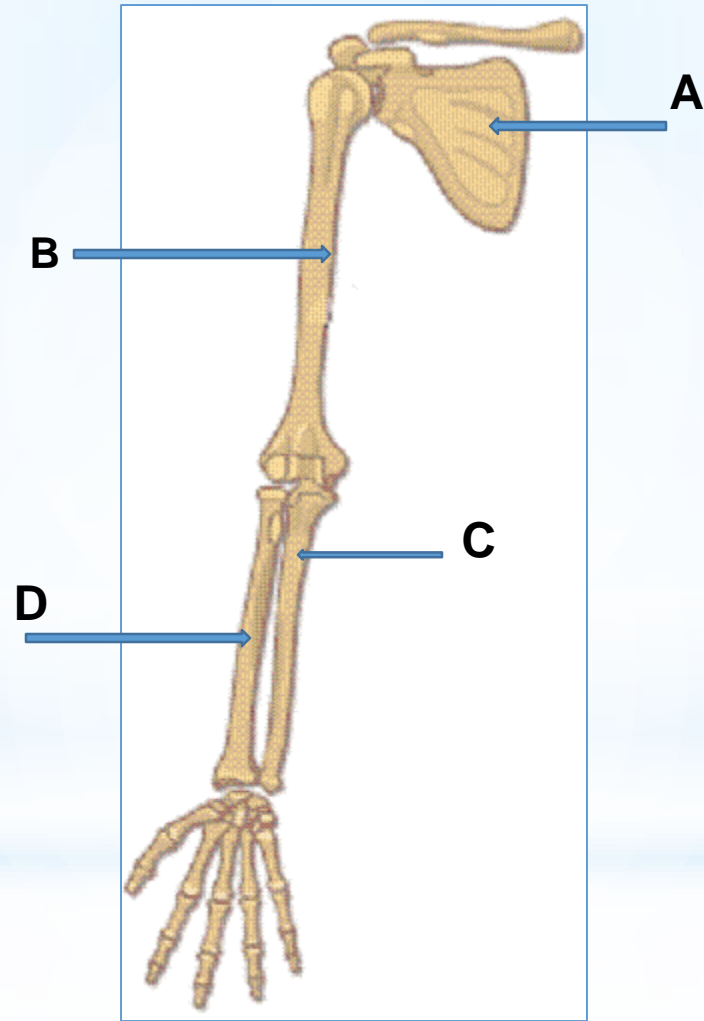
**Multipennate (Deltoid)**



# Case No.8

Identify:

- A.
- B.
- C.
- D.



# Case No.8

## Answer

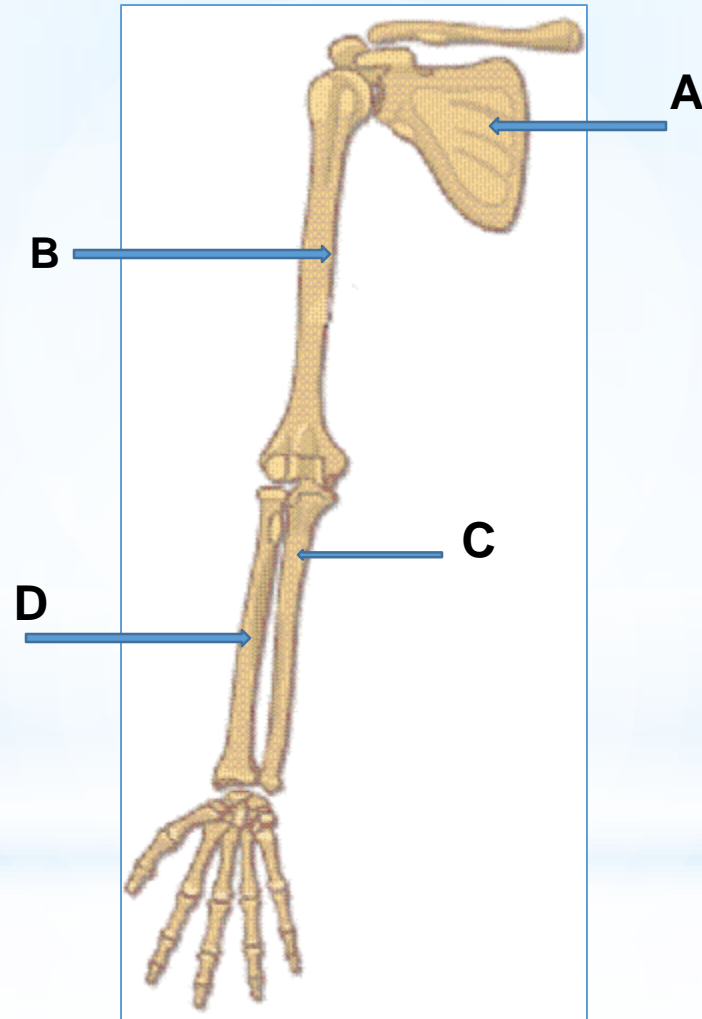
Identify:

A. **Scapula**

B. **Humerus**

C. **Ulna ( Medial )**

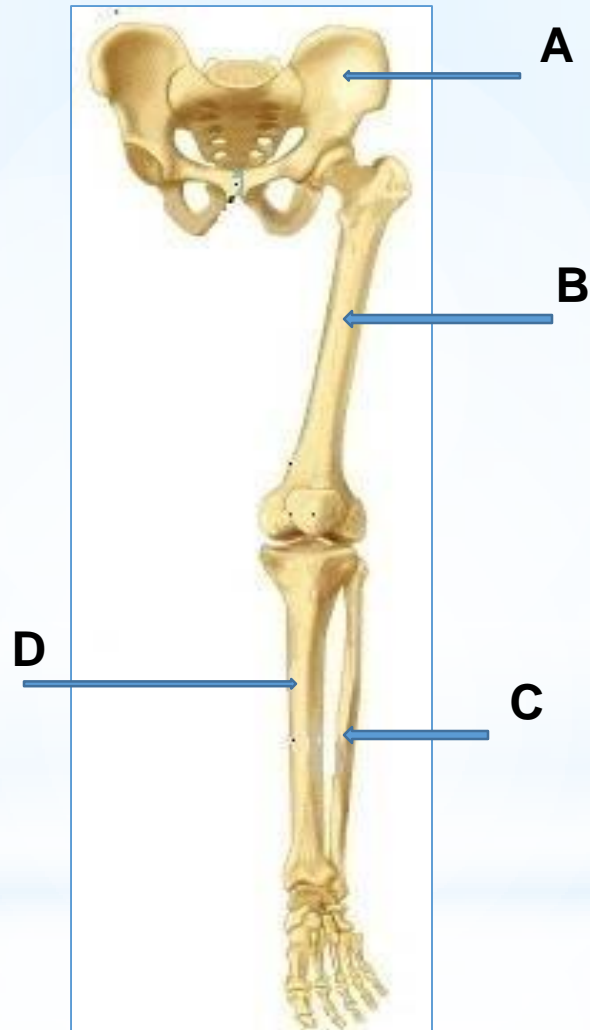
D. **Radius ( Lateral )**



# Case No.9

Identify

- A.
- B.
- C.
- D.



# Case No.9

## Answer

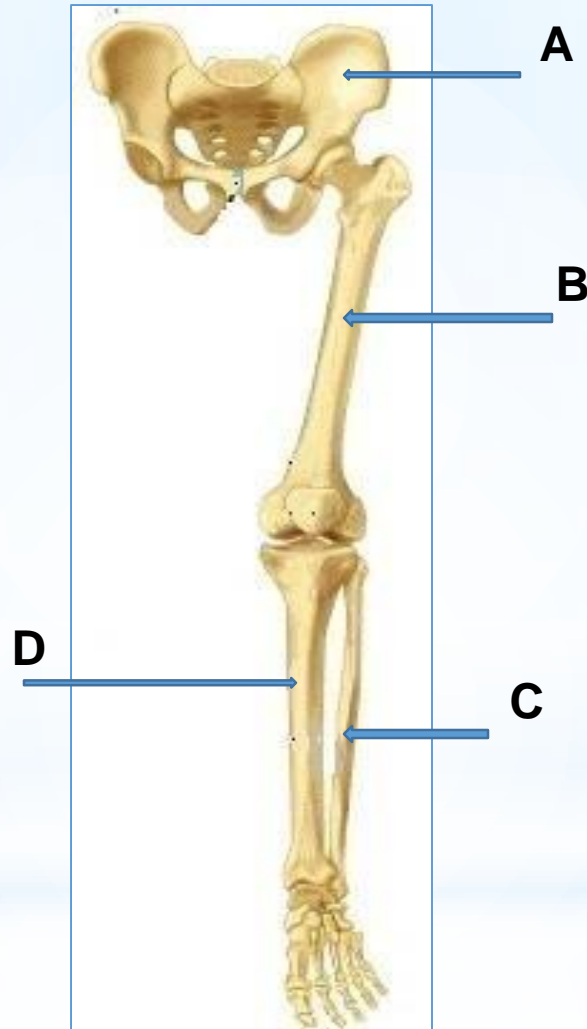
Identify:

A. Hip Bone

B. Femur

C. Fibula ( smaller & lateral )

D. Tibia ( bigger & medial )



# Case No.10

Identify the bones :

- A.
- B.
- C.



# Case No.10

## Answer



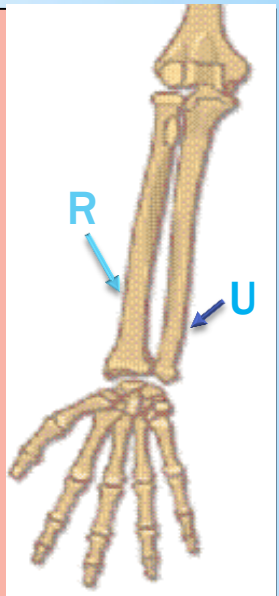
Identify the bones :

- A. Ulna
- B. Radius
- C. 2<sup>nd</sup> Metacarpal bone

باليد نبدأ العد من اللاترل الى  
الميديل.  
عكس القدم نبدأ العد من  
الميدال الى اللاترل.

Hand:	Foot:
8 carpals	7 tarsals
5 metacarpals	5 metatarsals
14 phalanges	14 phalanges

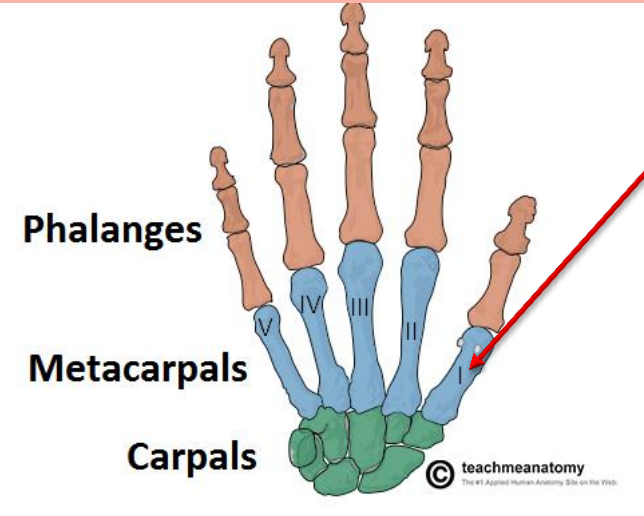
The radius lower end is bigger than the ulna lower and thinner end.



To count the metacarpal bones; we start from the thumb.

في الميتاكاربال  
نبدأ في العد من الابهام  
1- ابهام  
2- سبابة  
3- وسطى

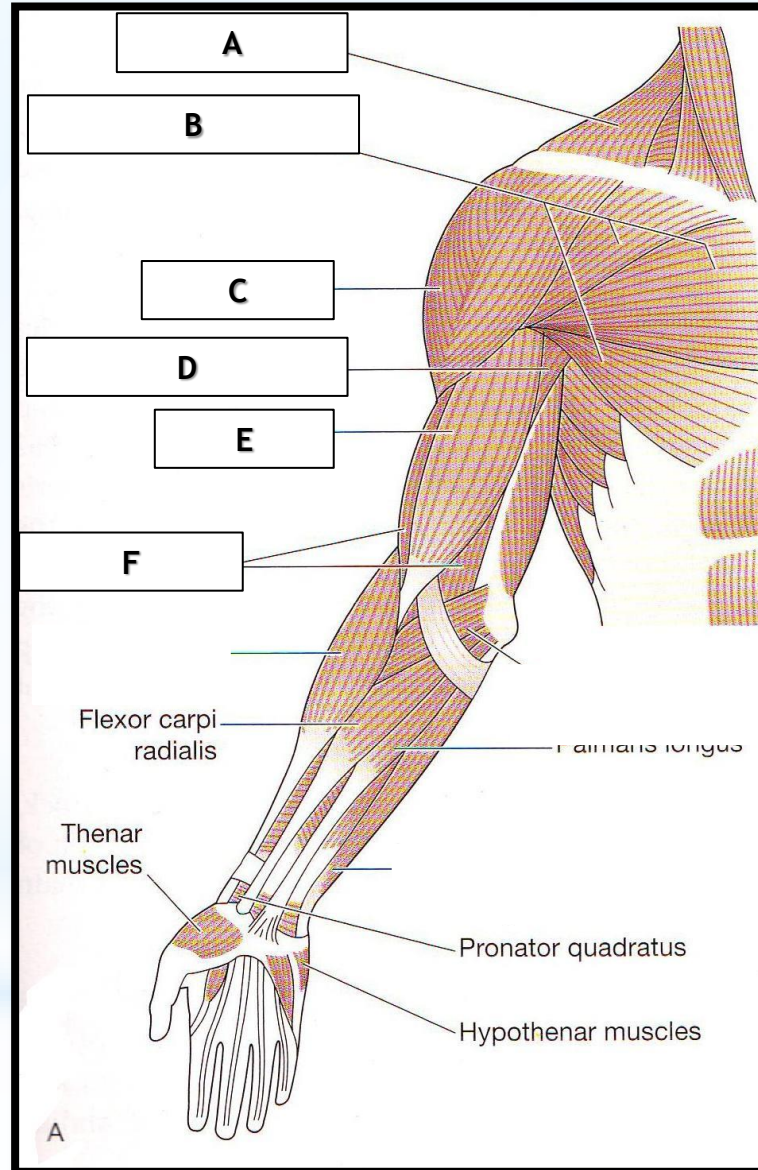
....



# Case No.11 (upper limb)

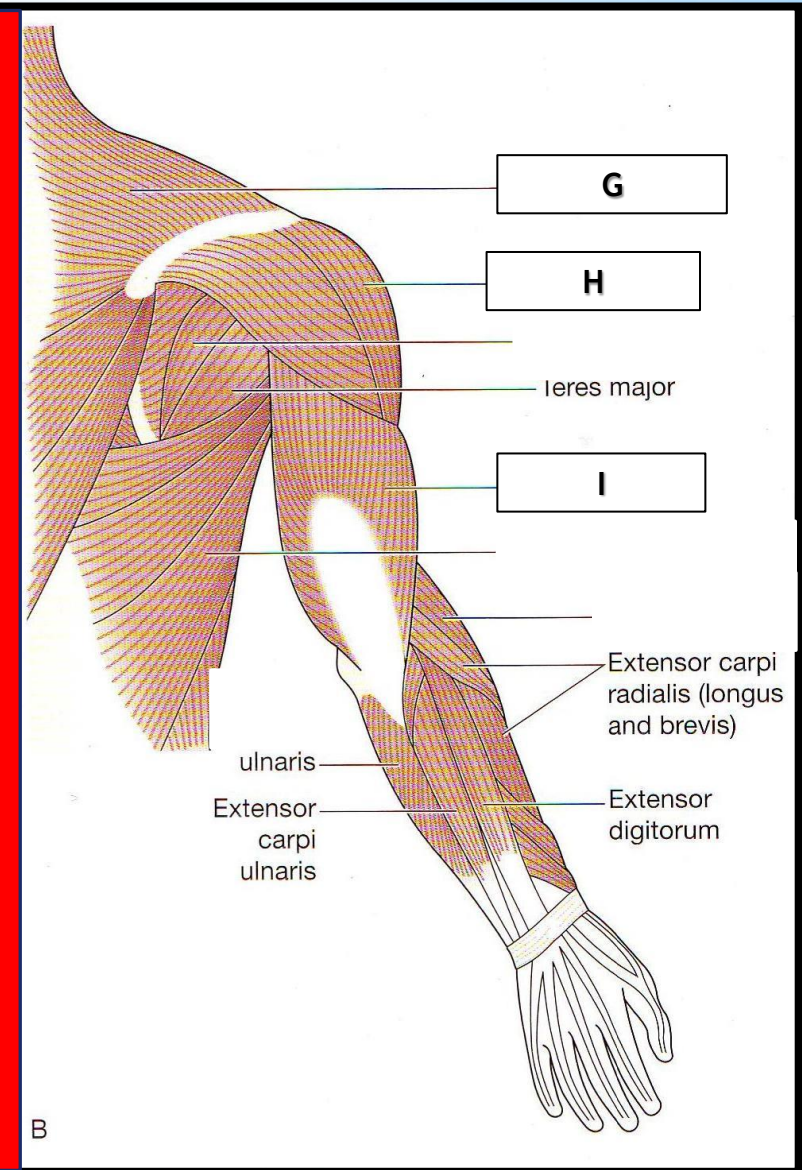
Identify the muscles (names):

- A.
- B.
- C.
- D.
- E.
- F.
- G.
- H.
- I.



A

Anterior (امام)



B

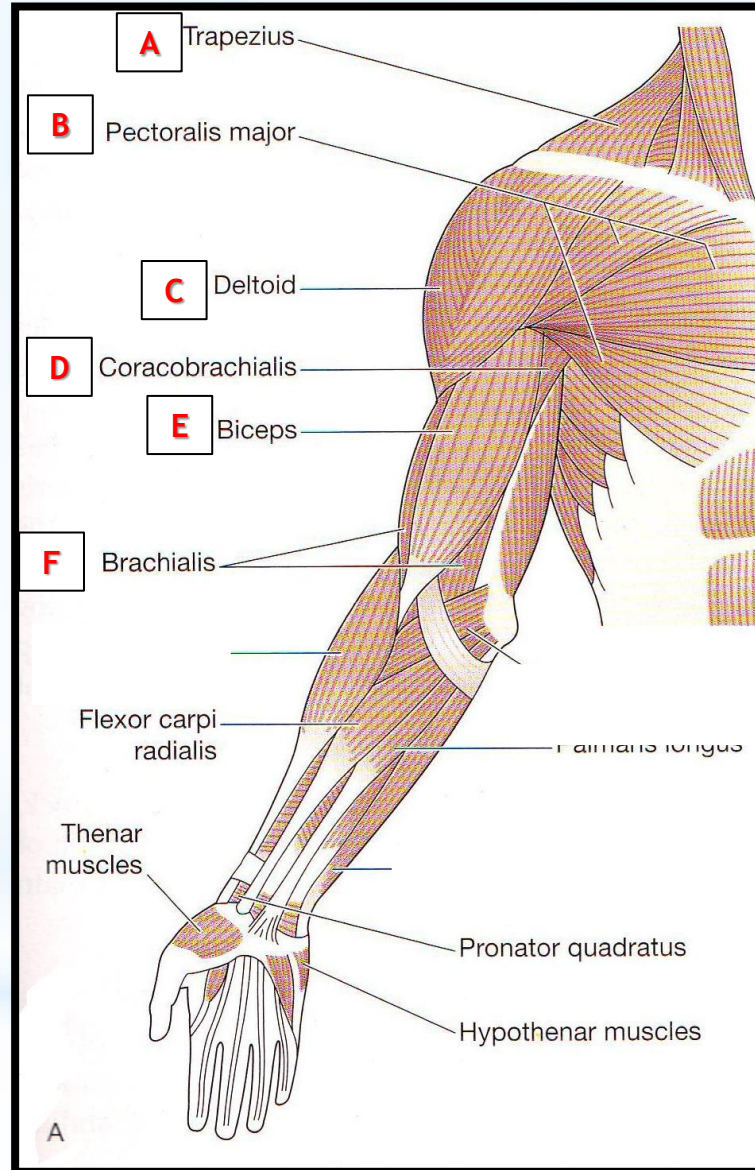
Posterior (خلف)

# Case No.11 (upper limb)

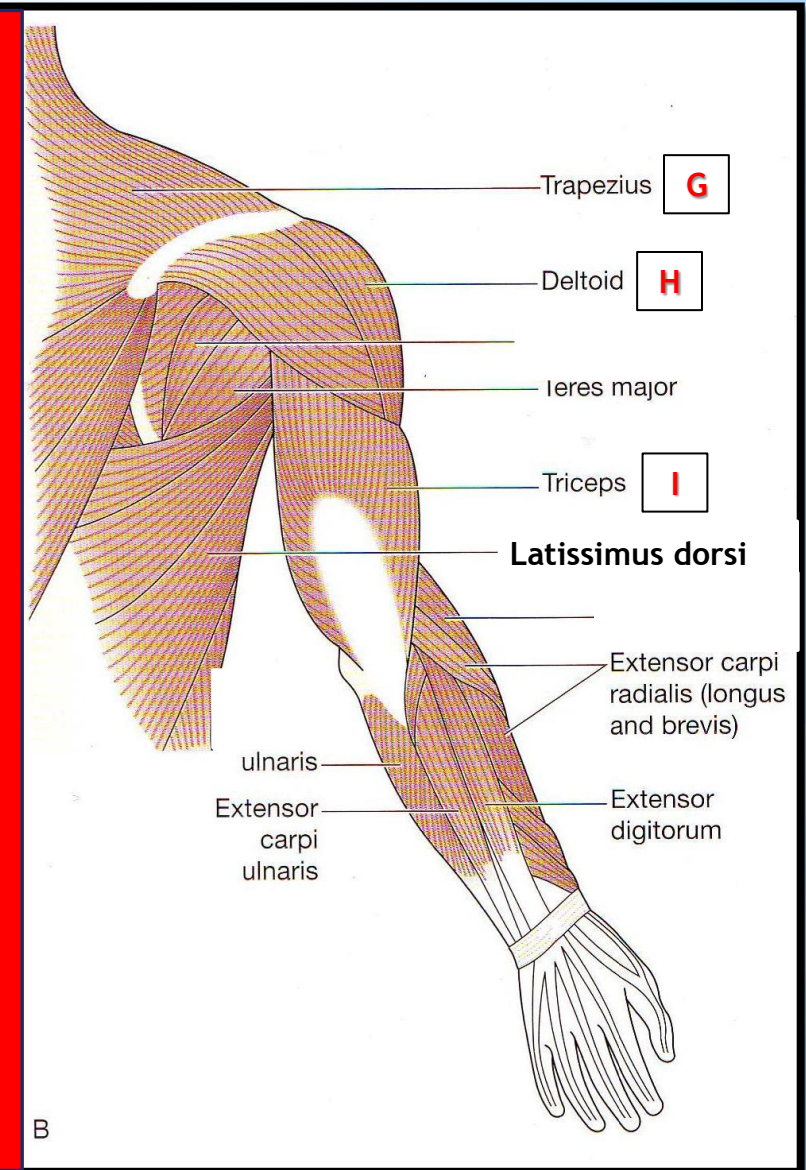
## Answer

الدكتور نبهه على هذي العضلات  
المهمه :

- Trapezius (عضلة الرقبة)
- Pectoralis major
- Deltoid
- Biceps (بالامام)
- Triceps (بالخلف)
- Latissimus dorsi (العريضة الظهرية)



Anterior ( امام )



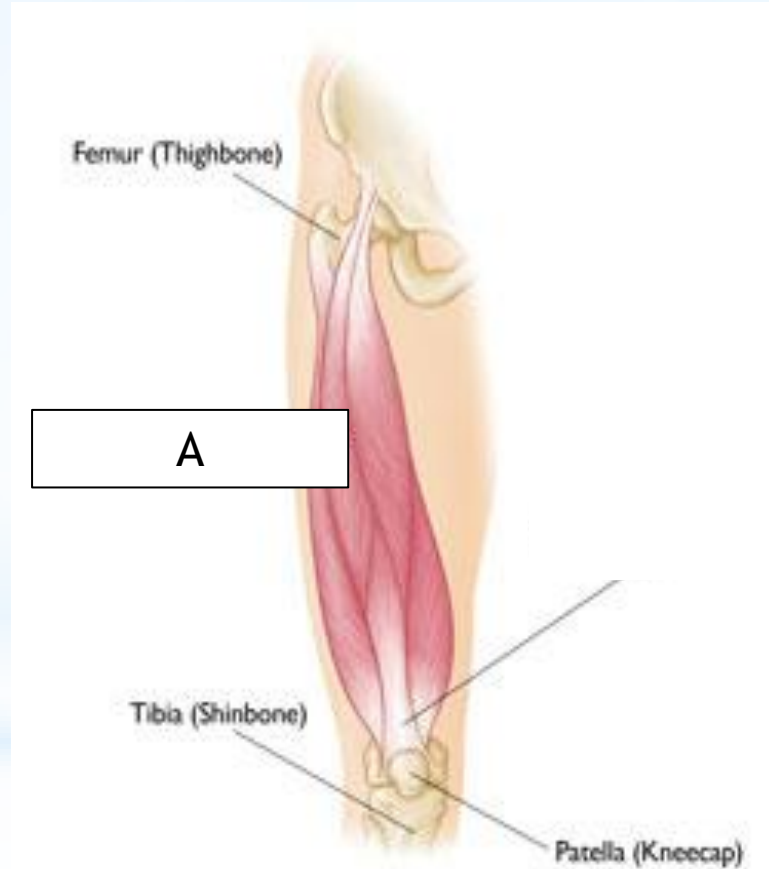
Posterior ( خلف )



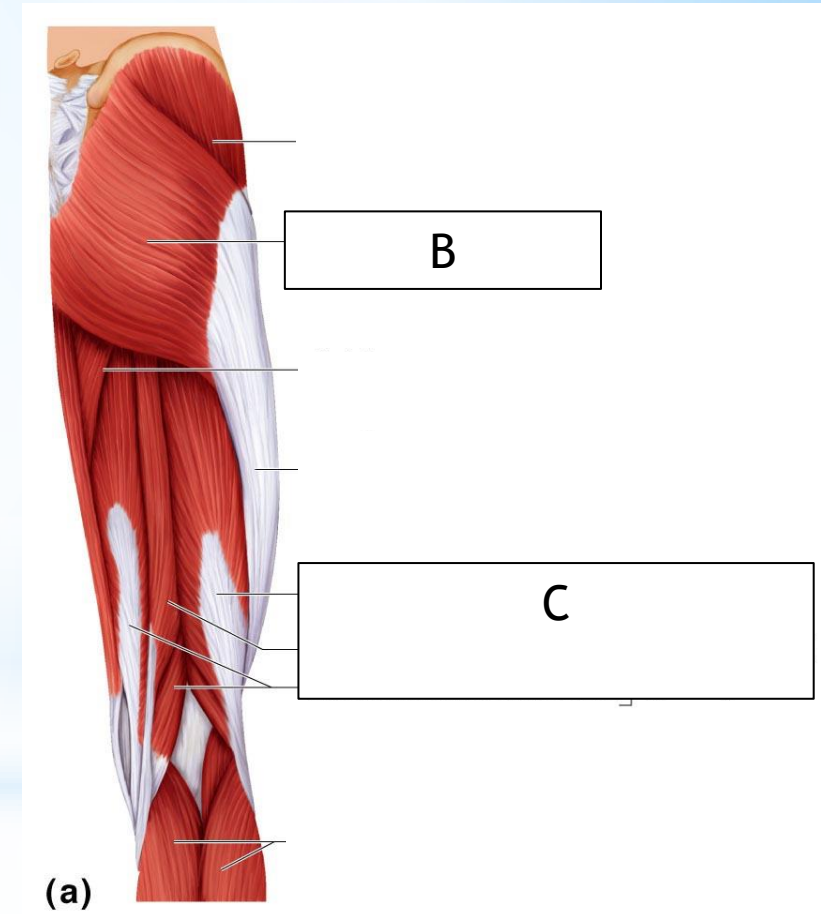
# Case No.12 (lower limb)

Identify the muscles  
(names):

- A.
- B.
- C.



Anterior (امام)



Copyright © 2009 Pearson Education, Inc., publishing as Pearson Benjamin Cummings.

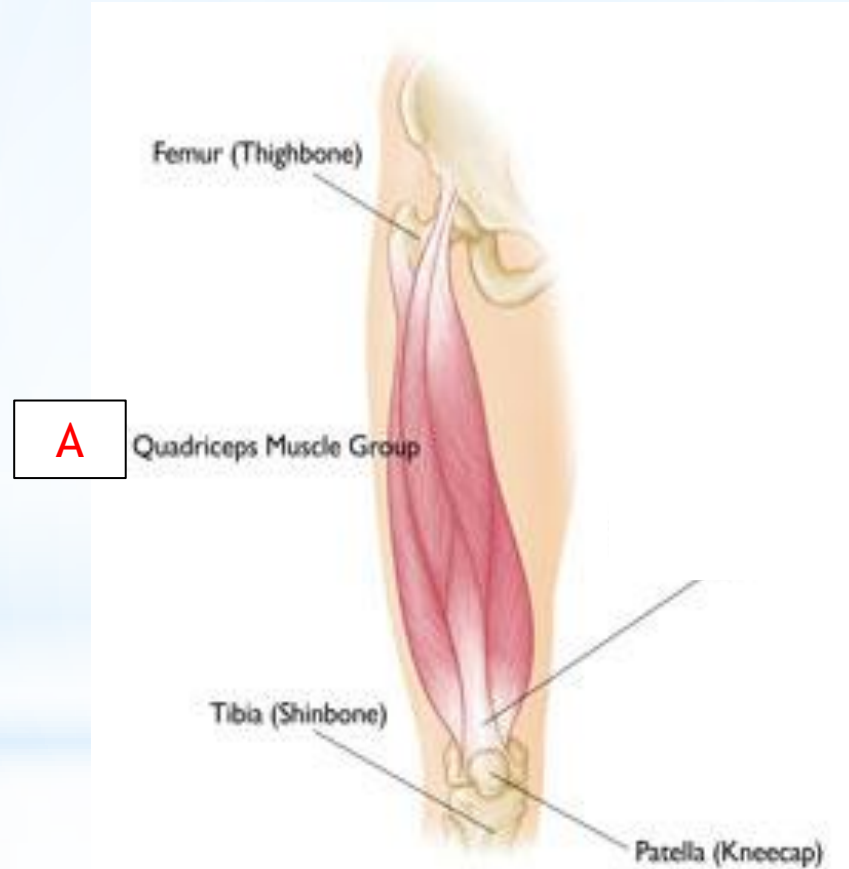
Posterior (خلف)

# Case No.12 (lower limb)

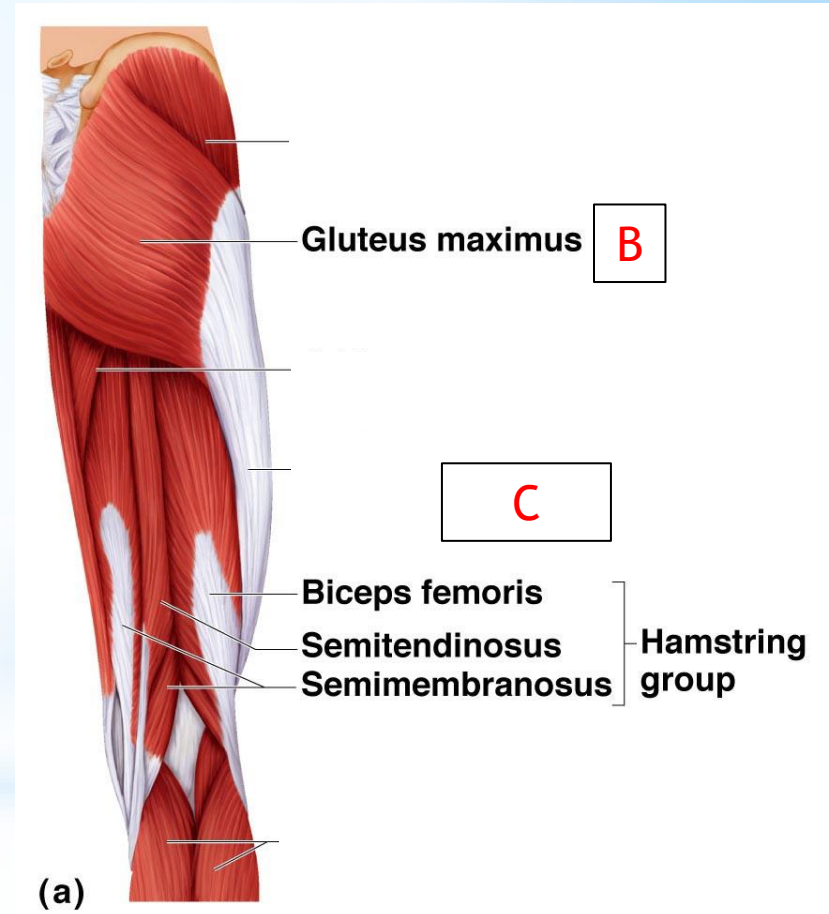
## Answer

Identify the muscles  
(names):

- A. **Quadriceps femoris**
- B. **Gluteus maximus**
- C. **Hamstrings**



Anterior (امام)



(a)

Copyright © 2009 Pearson Education, Inc., publishing as Pearson Benjamin Cummings.

Posterior (خلف)

Foundation Block OSPE team:

عبدالله الفريح  
غيداء الجميلي  
عبدالوهاب سناري  
منيرة السلولي

Thanks for 434  
anatomy team.