

Microtechniques

Paraffin technique

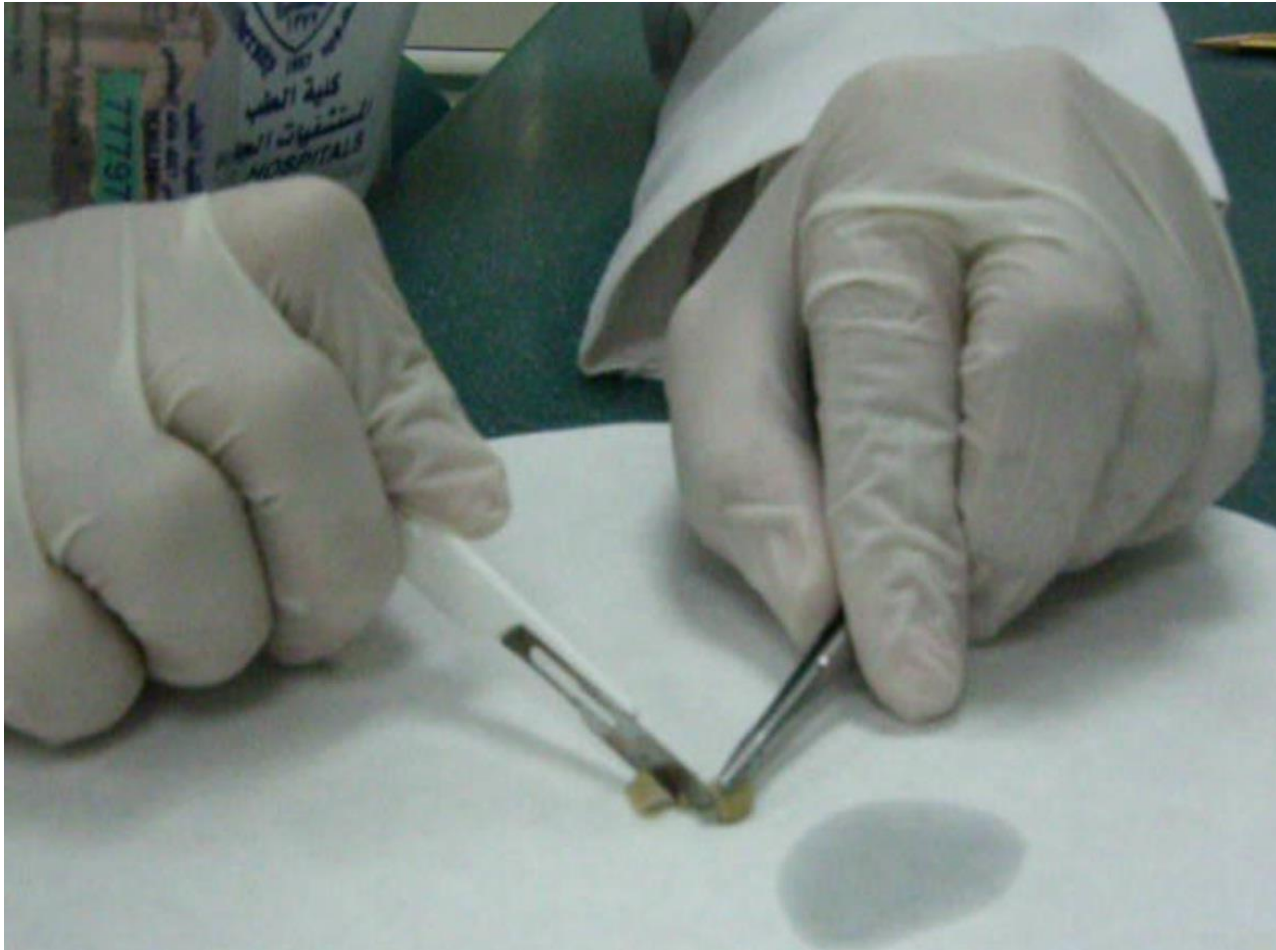
Obtaining the sample



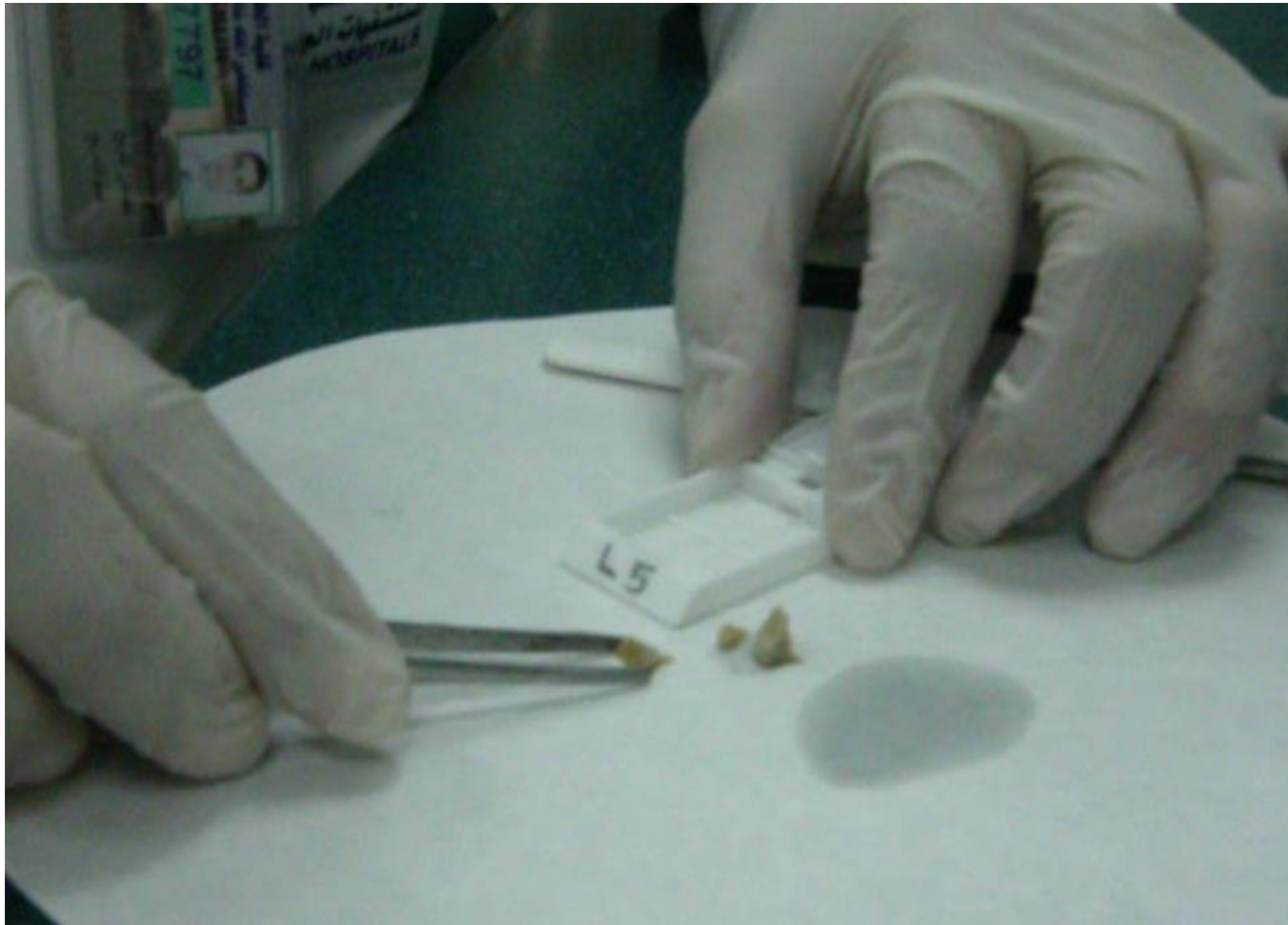
Fixation



Slicing of the sample



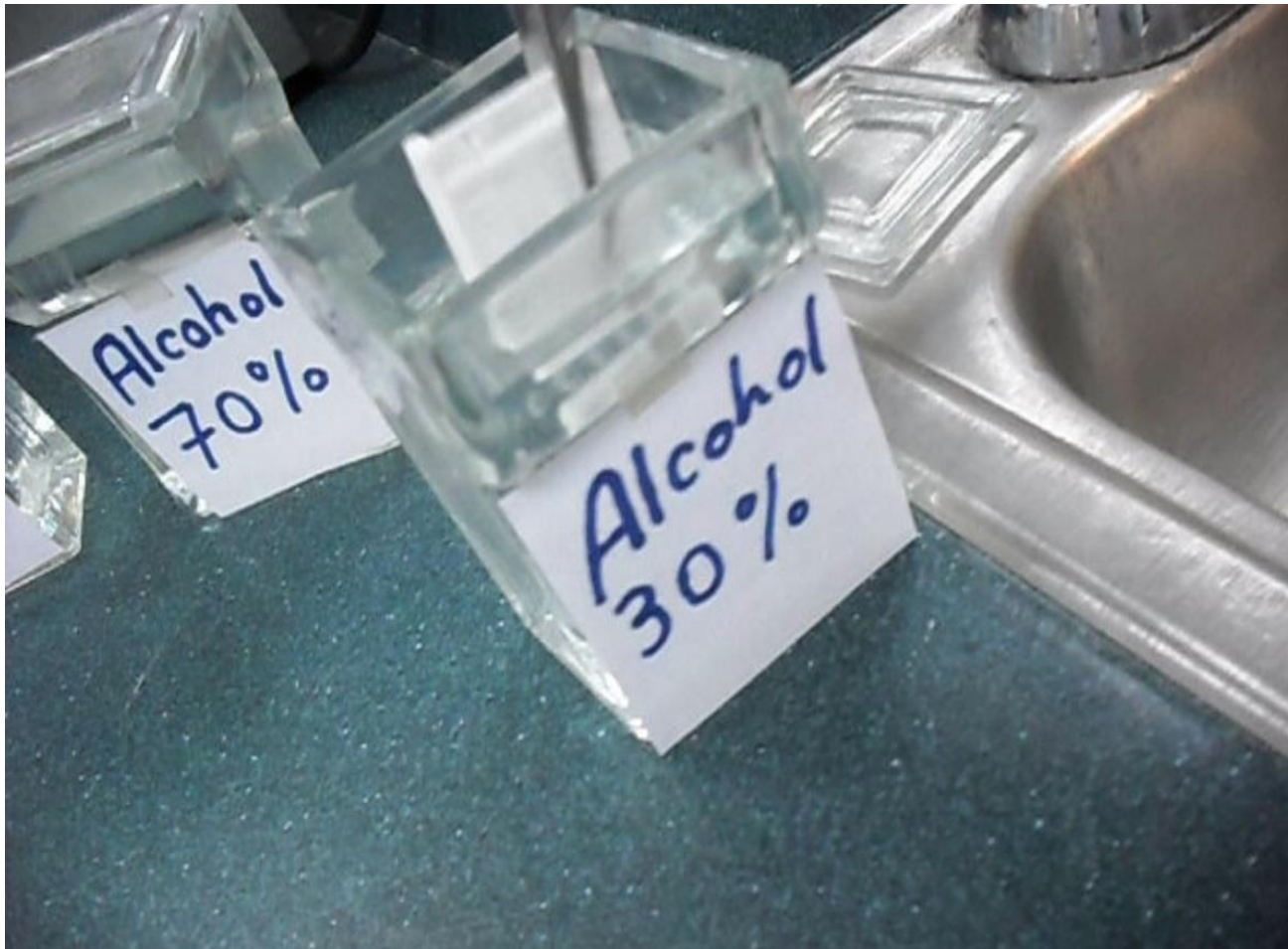
Tissue Cassette



Washing



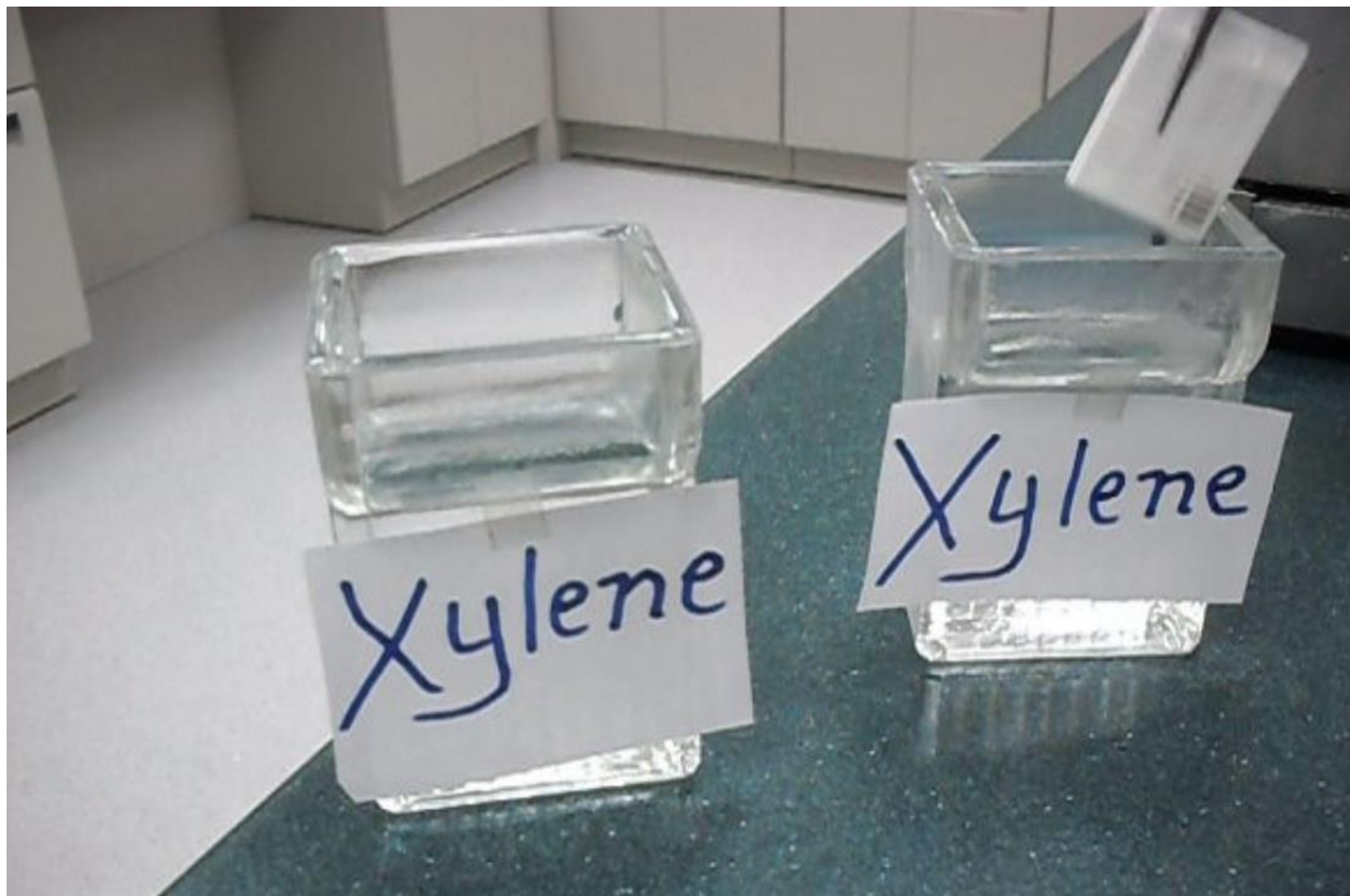
Removal of the Water



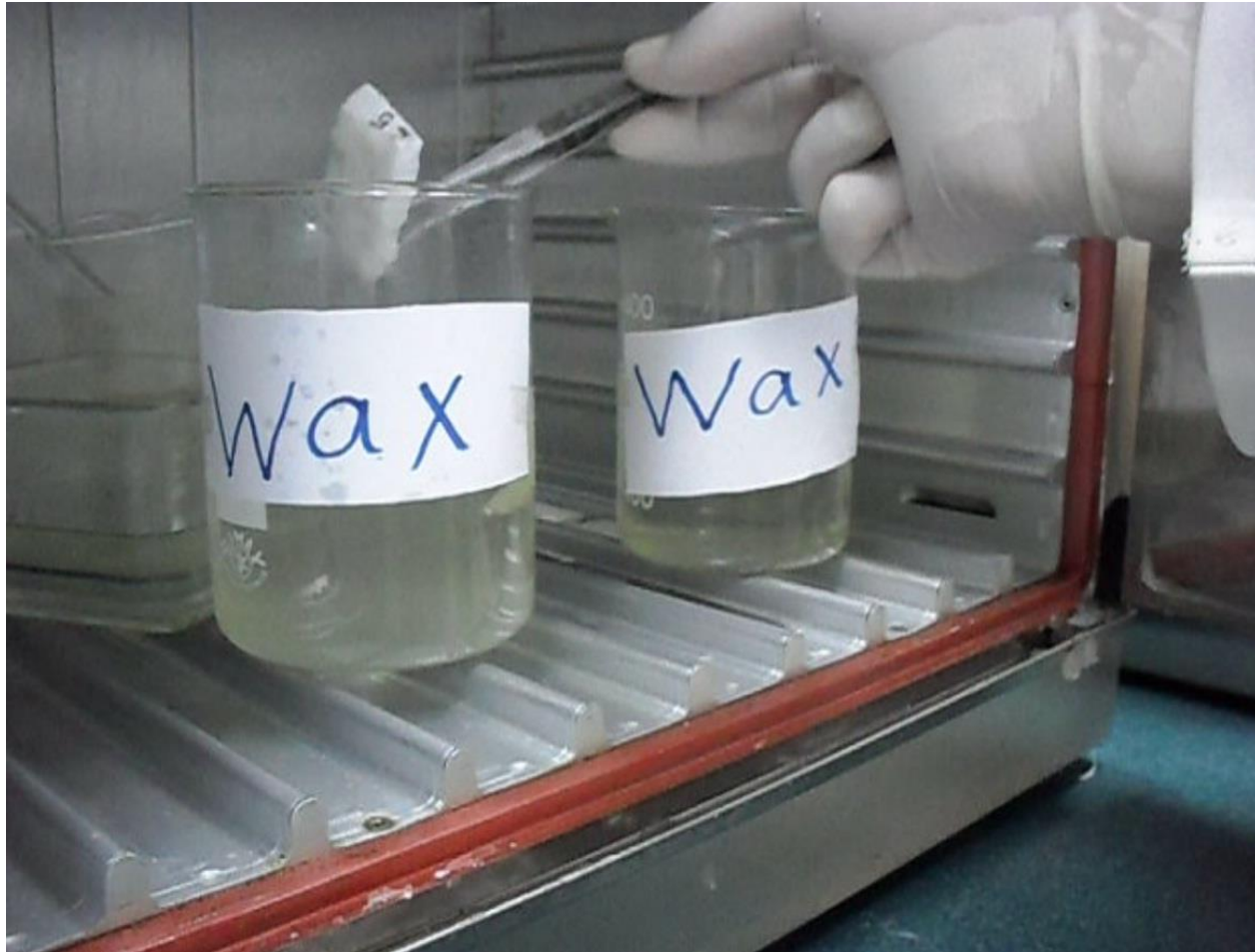
Removal of the Water



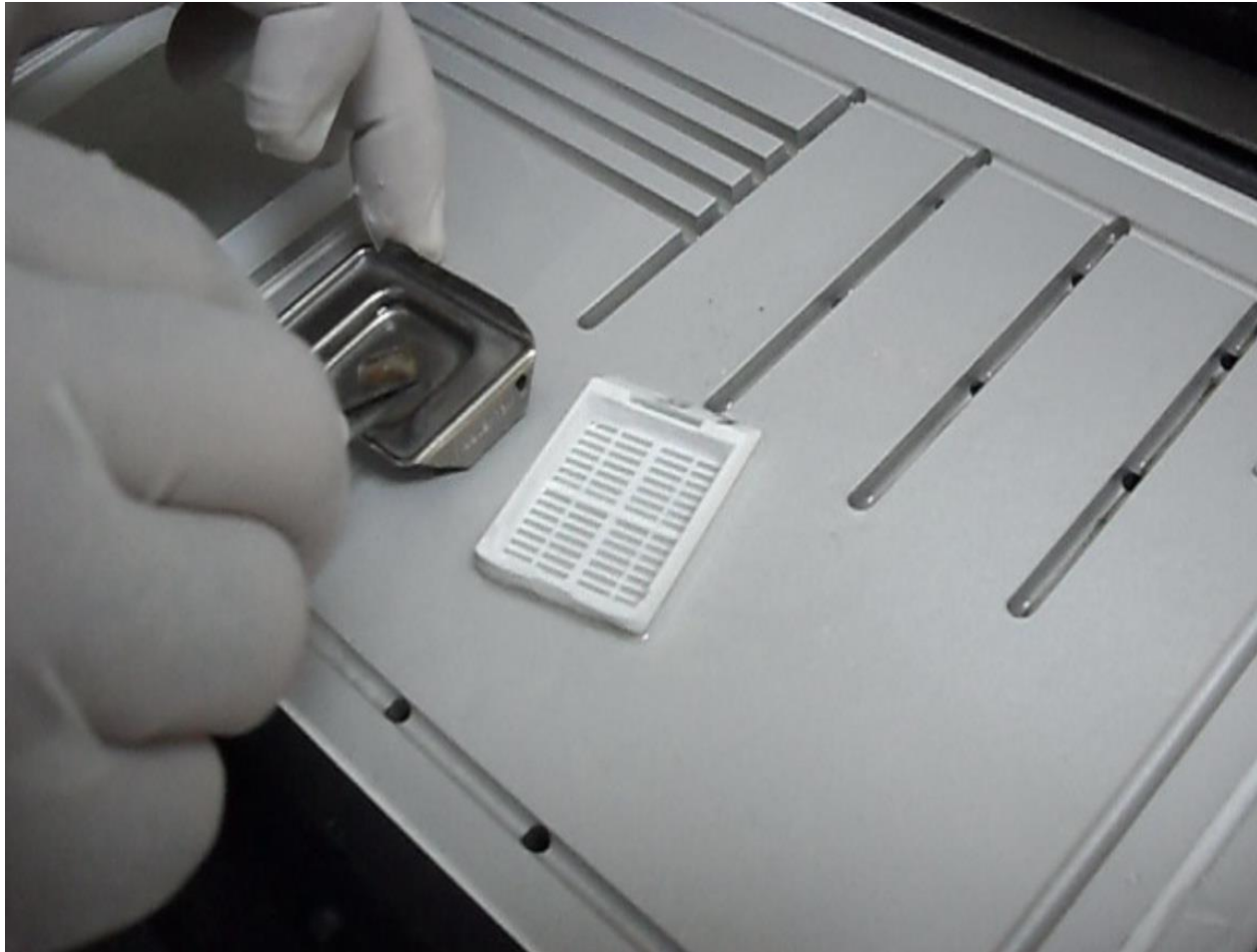
Removal of the Alcohol



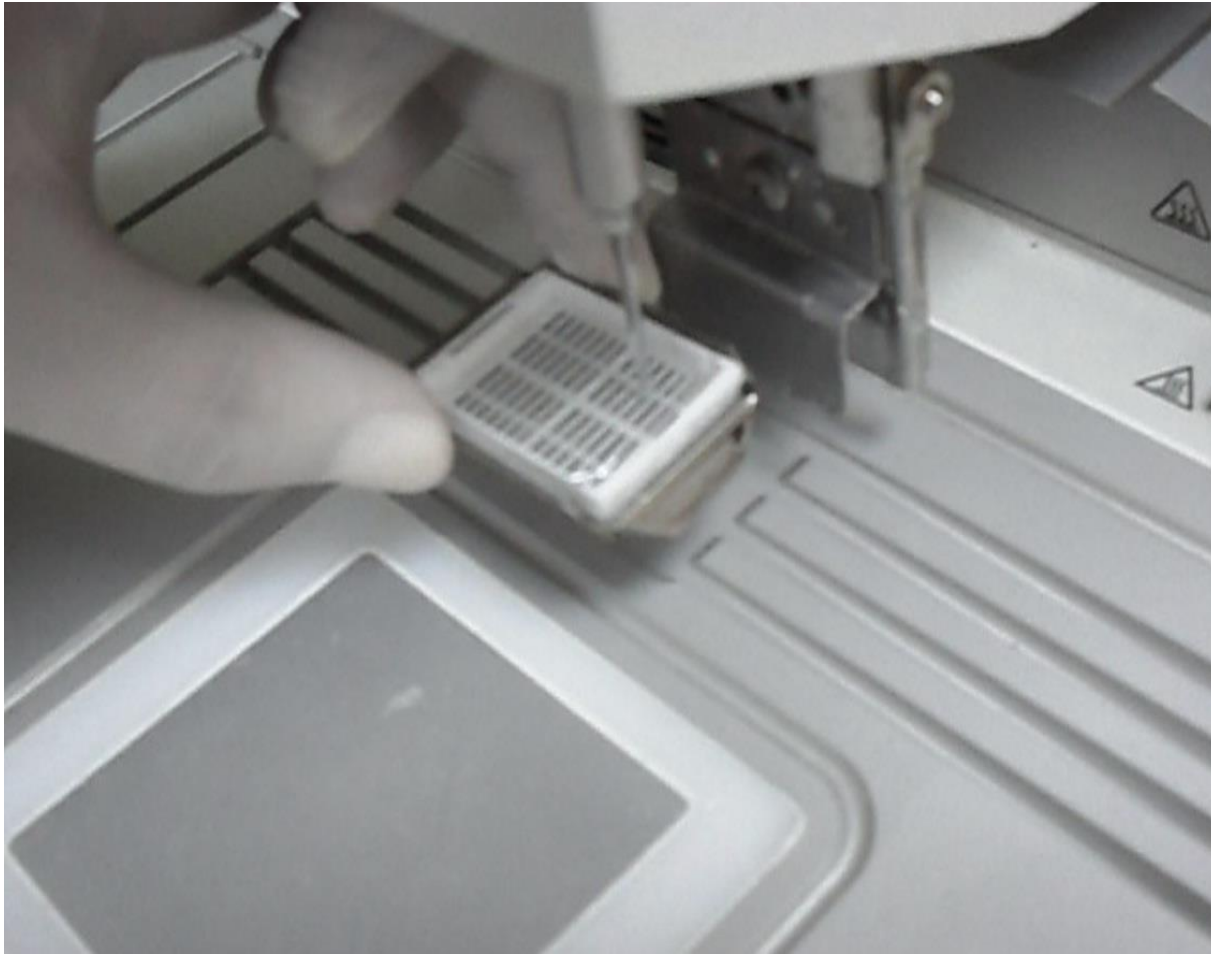
Melted Wax



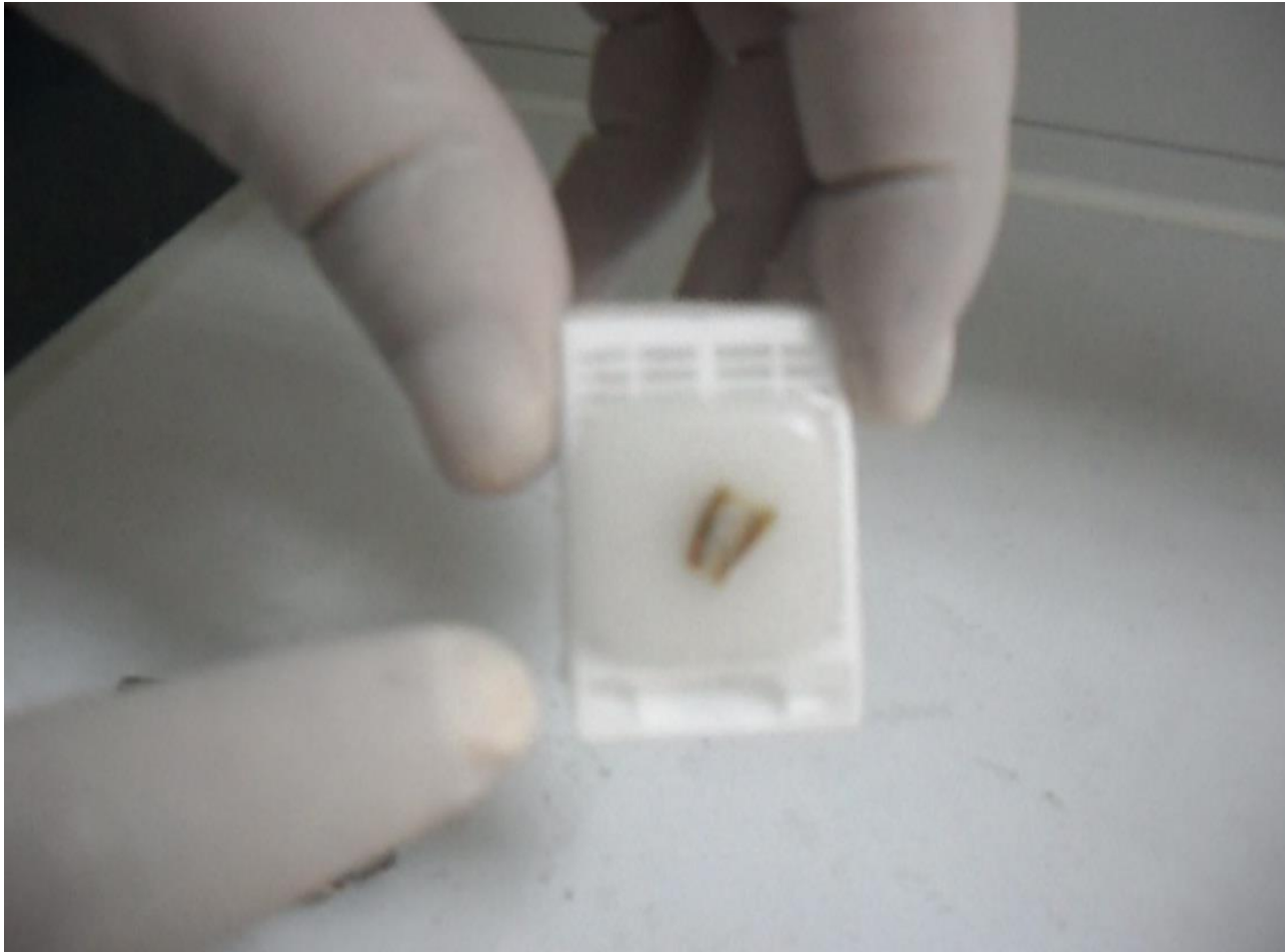
Embedding



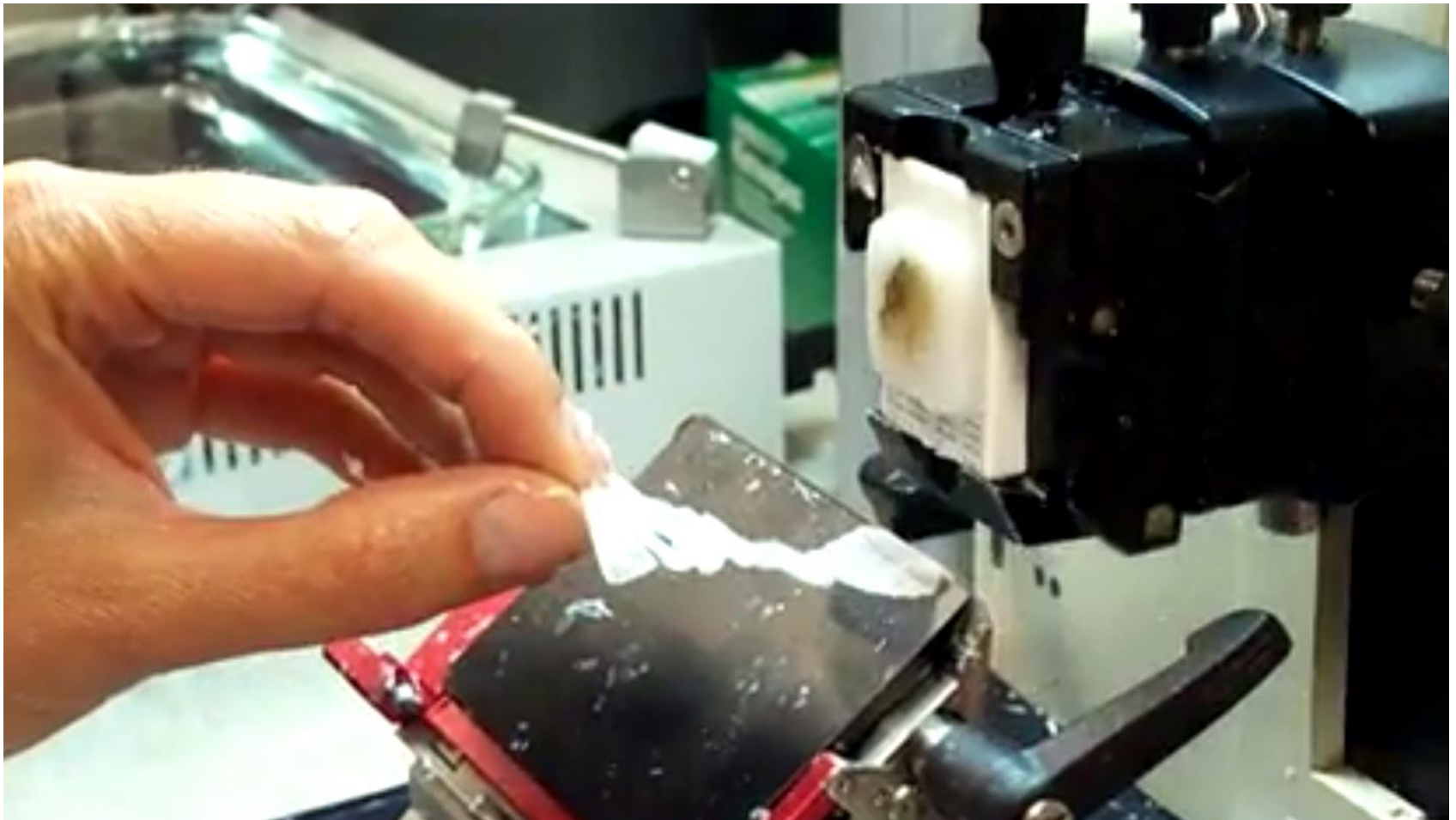
Embedding



Tissue Block



Cutting



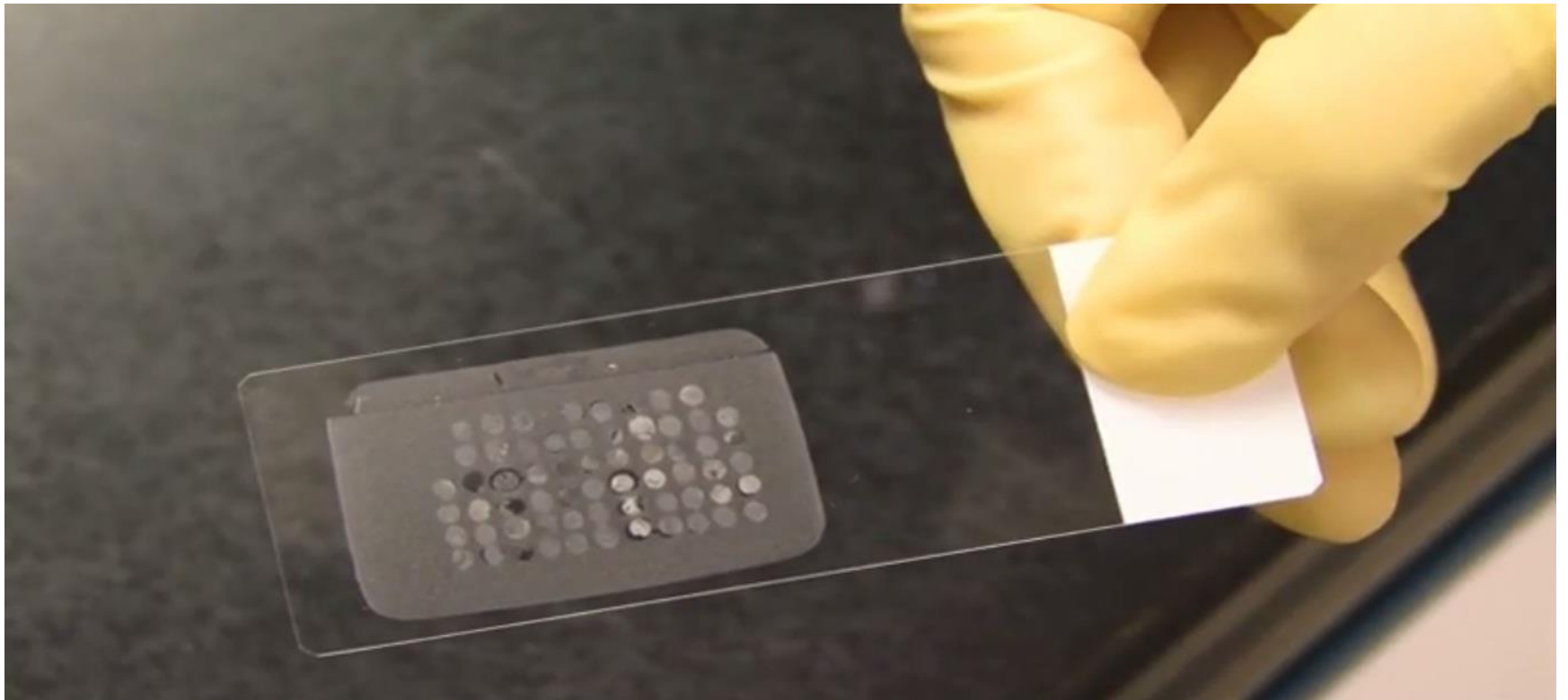
Floating Bath



Floating Bath



Unstained Slide ready for Staining



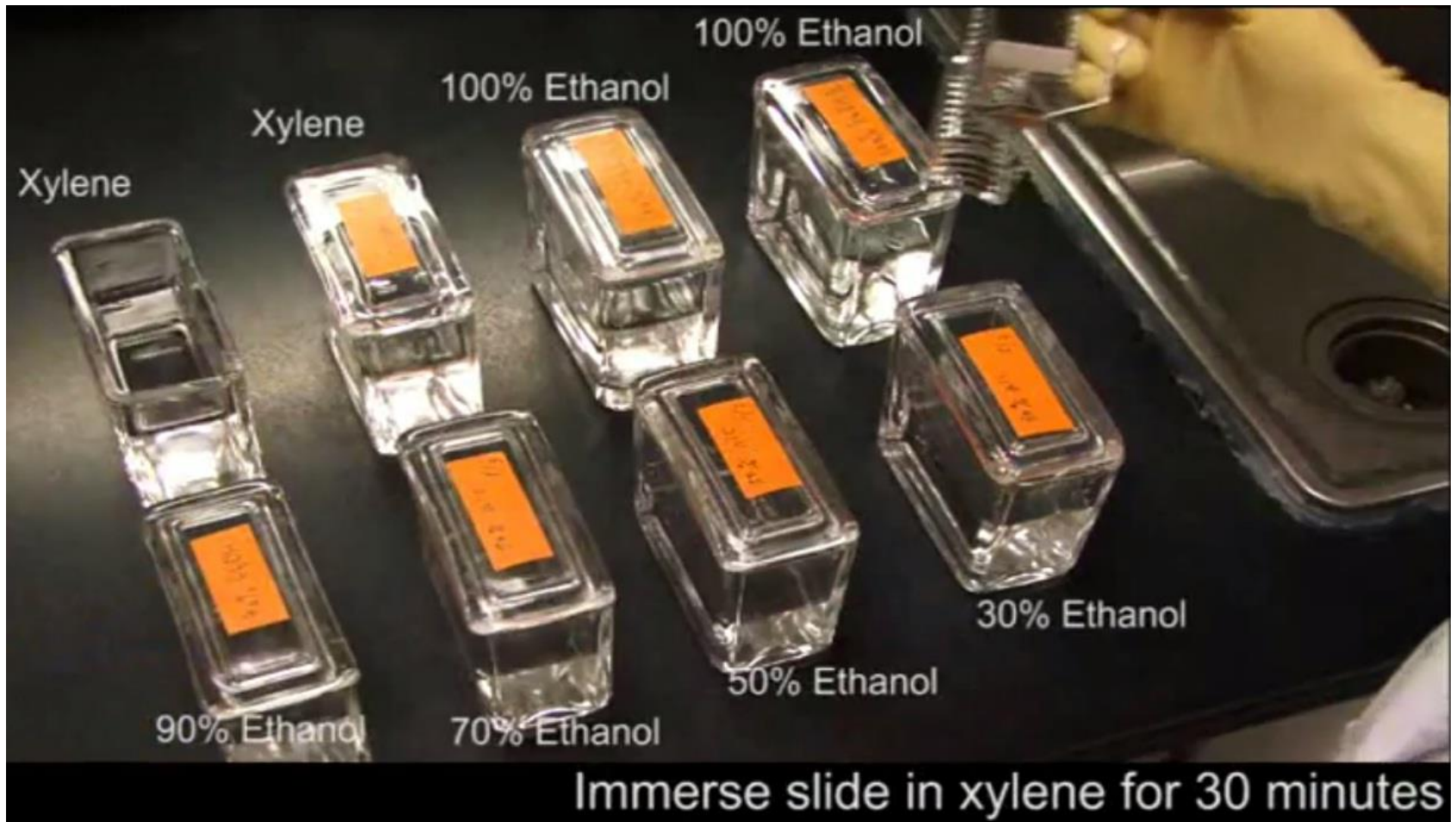
H&E Staining

Heating

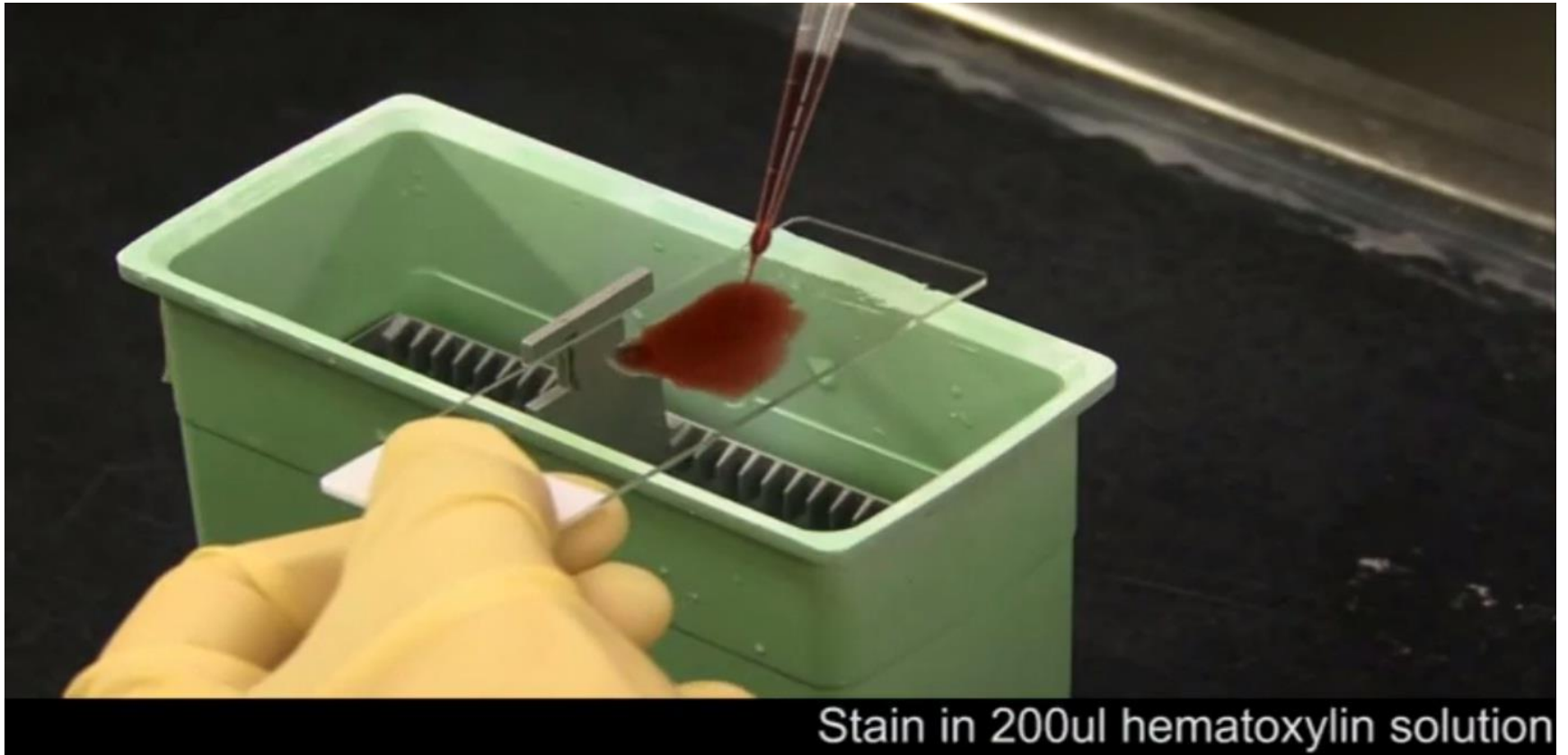


Incubate at 65°C for 30 minutes

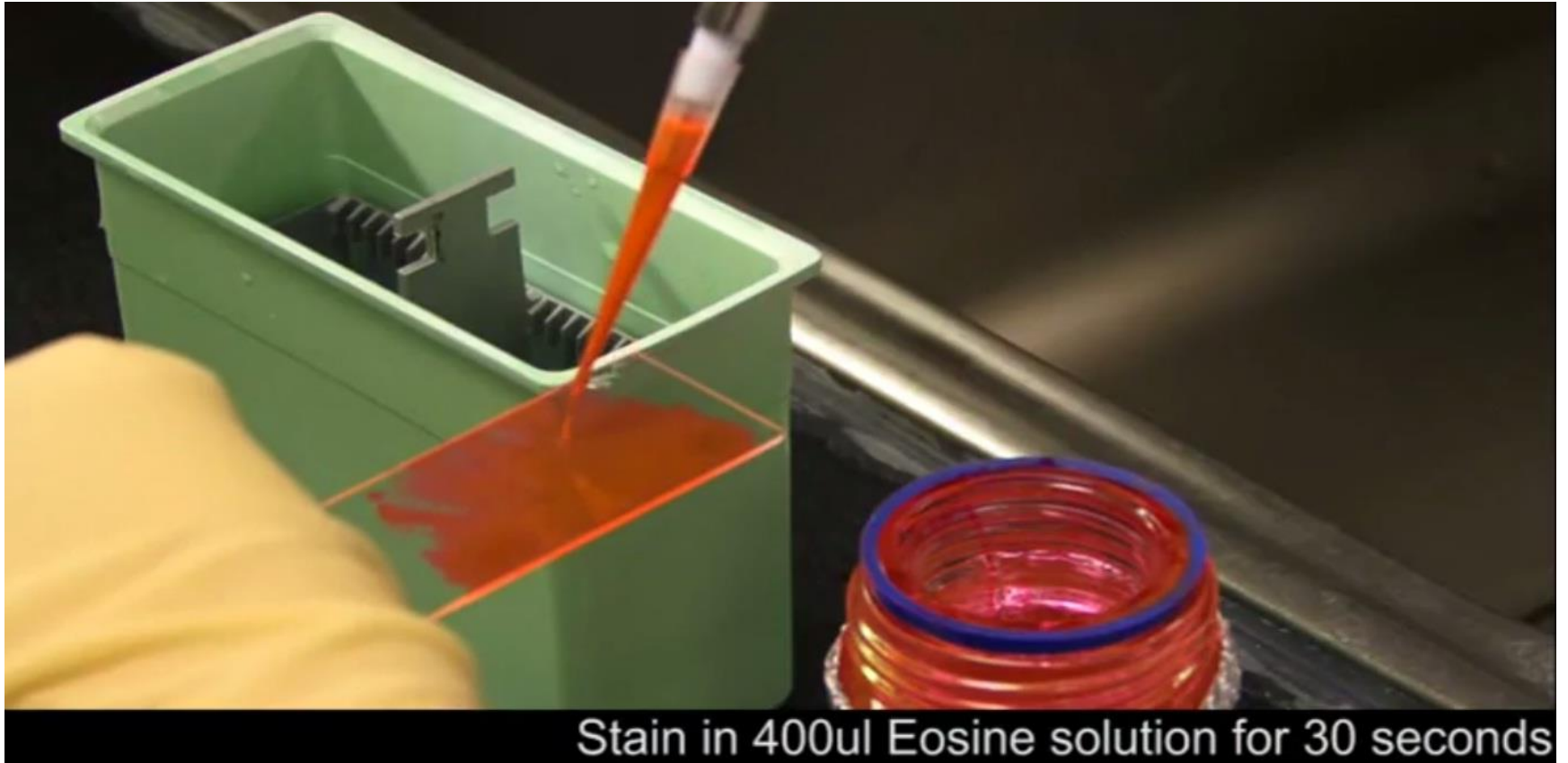
De-Wax & Rehydration



Hematoxylin Stain



Eosin Stain

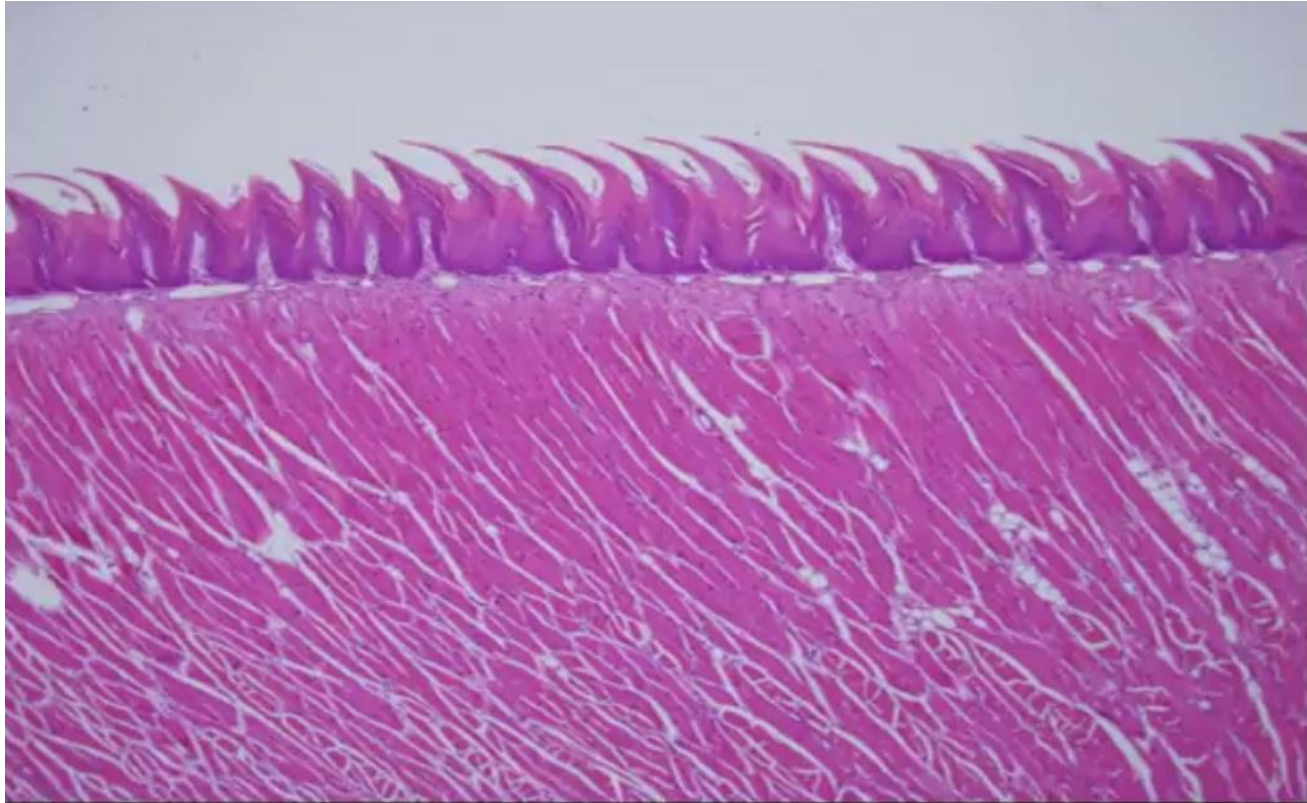


Stain in 400ul Eosine solution for 30 seconds

Mounting



Mount the slide



Blue : nuclei
Pink : cytoplasm

Mouse tongue tissue

THANK YOU