

RADIOLOGICAL ANATOMY OF THE VERTEBRAE

Dr. Sajjad Hussain

Consultant Radiologist KKUH

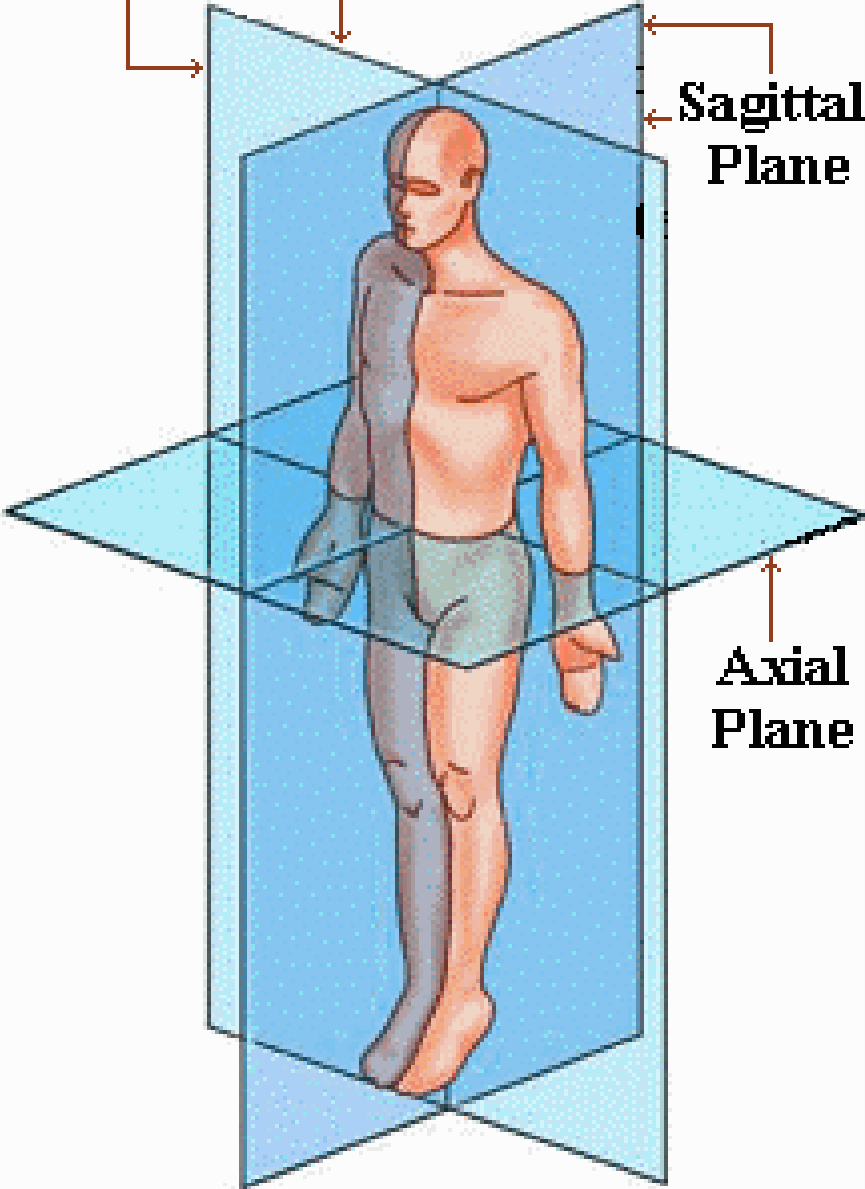
Assistant Professor of Radiology KSU

Which of following radiological modalities can be used in imaging the vertebra?

- A. X ray
- B. CT scan
- C. Nuclear scan
- D. MRI
- E. US

ALL can be used

Coronal Plane



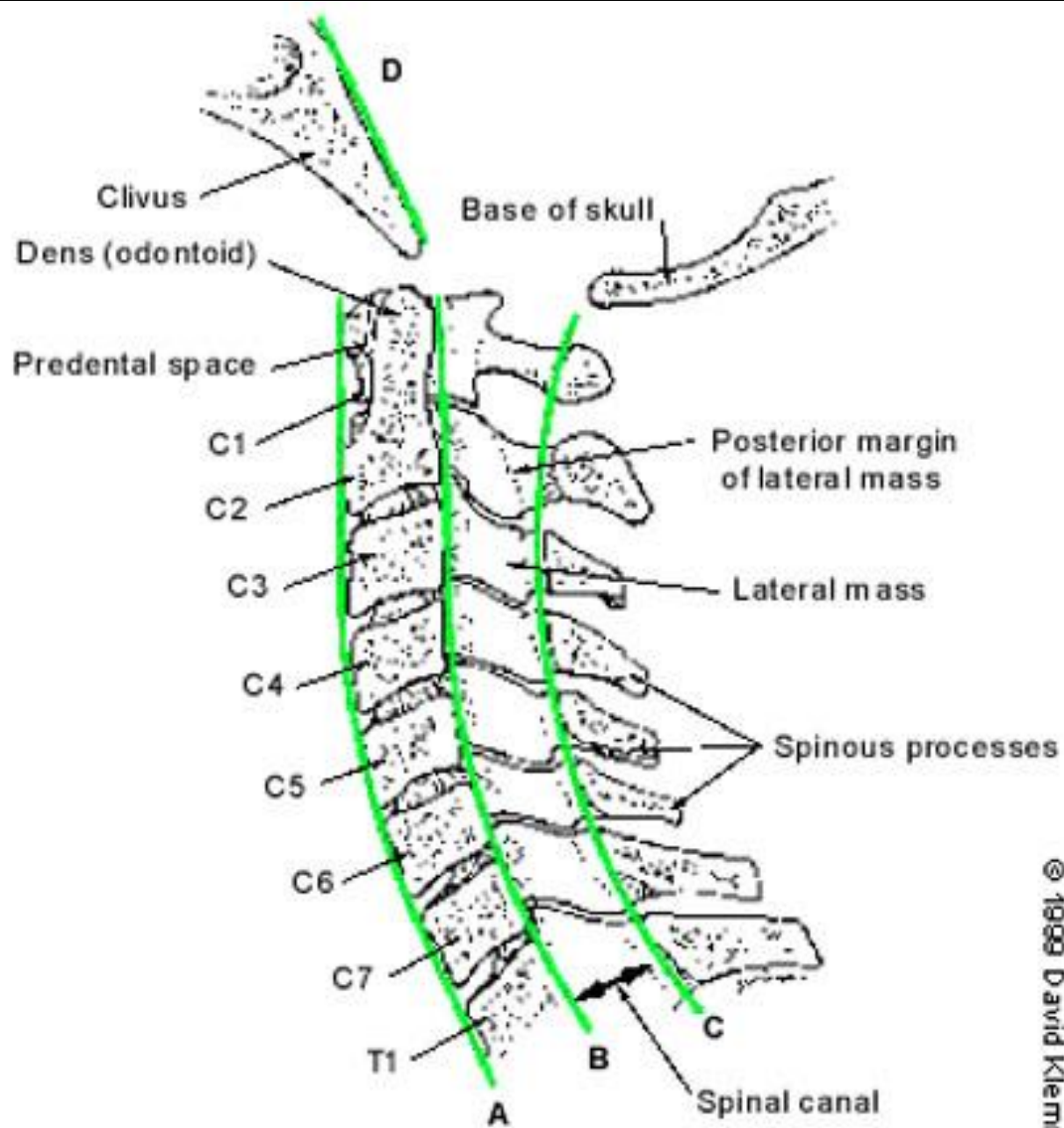
Sagittal Plane

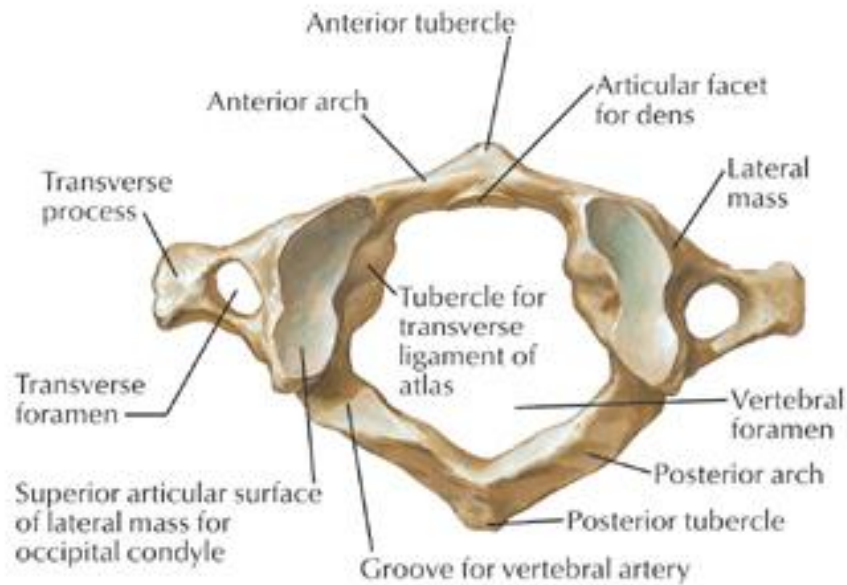
Axial Plane

X ray

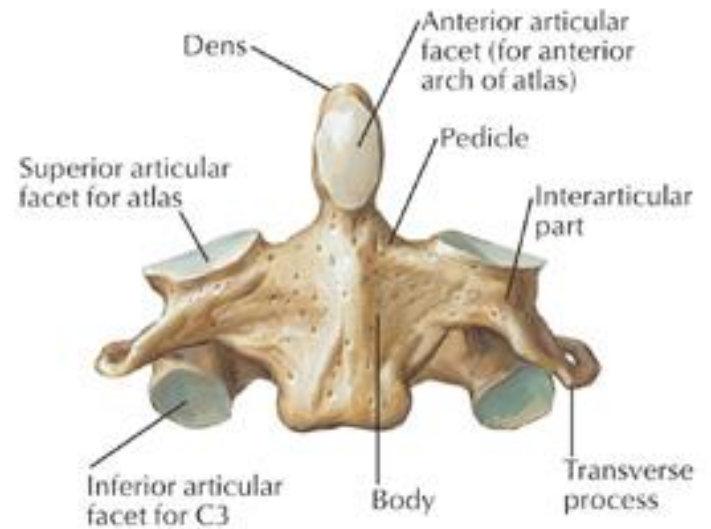
Cervical spine



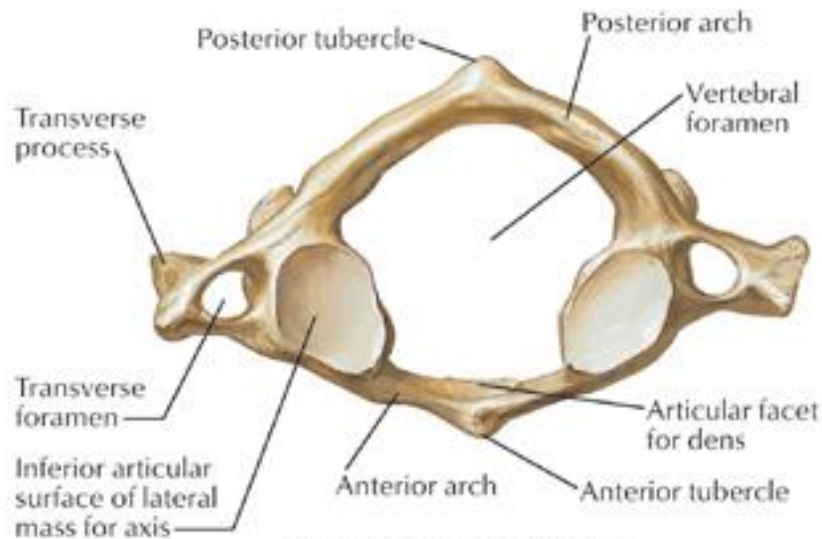




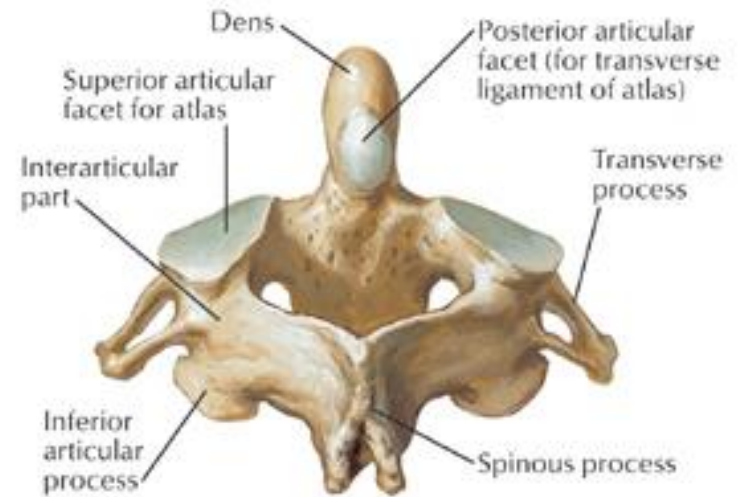
Atlas (C1): superior view



Axis (C2): anterior view



Atlas (C1): inferior view

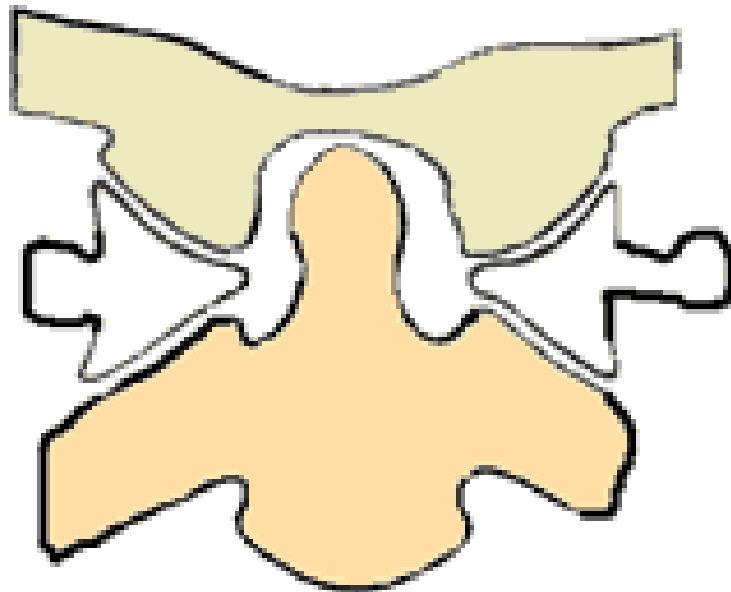


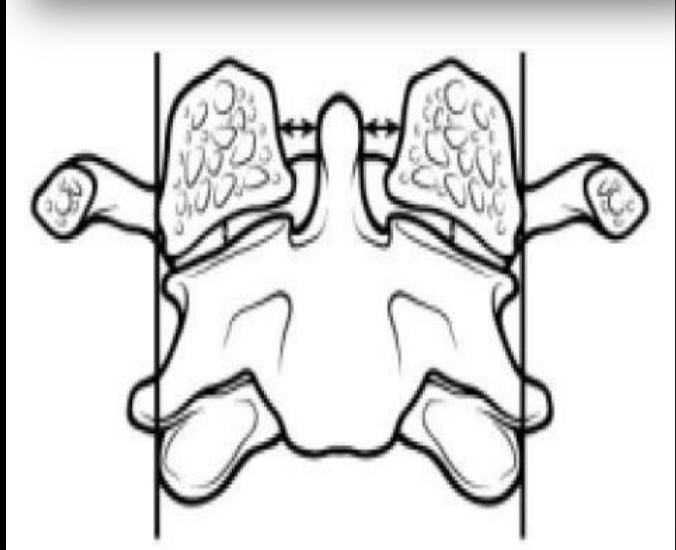
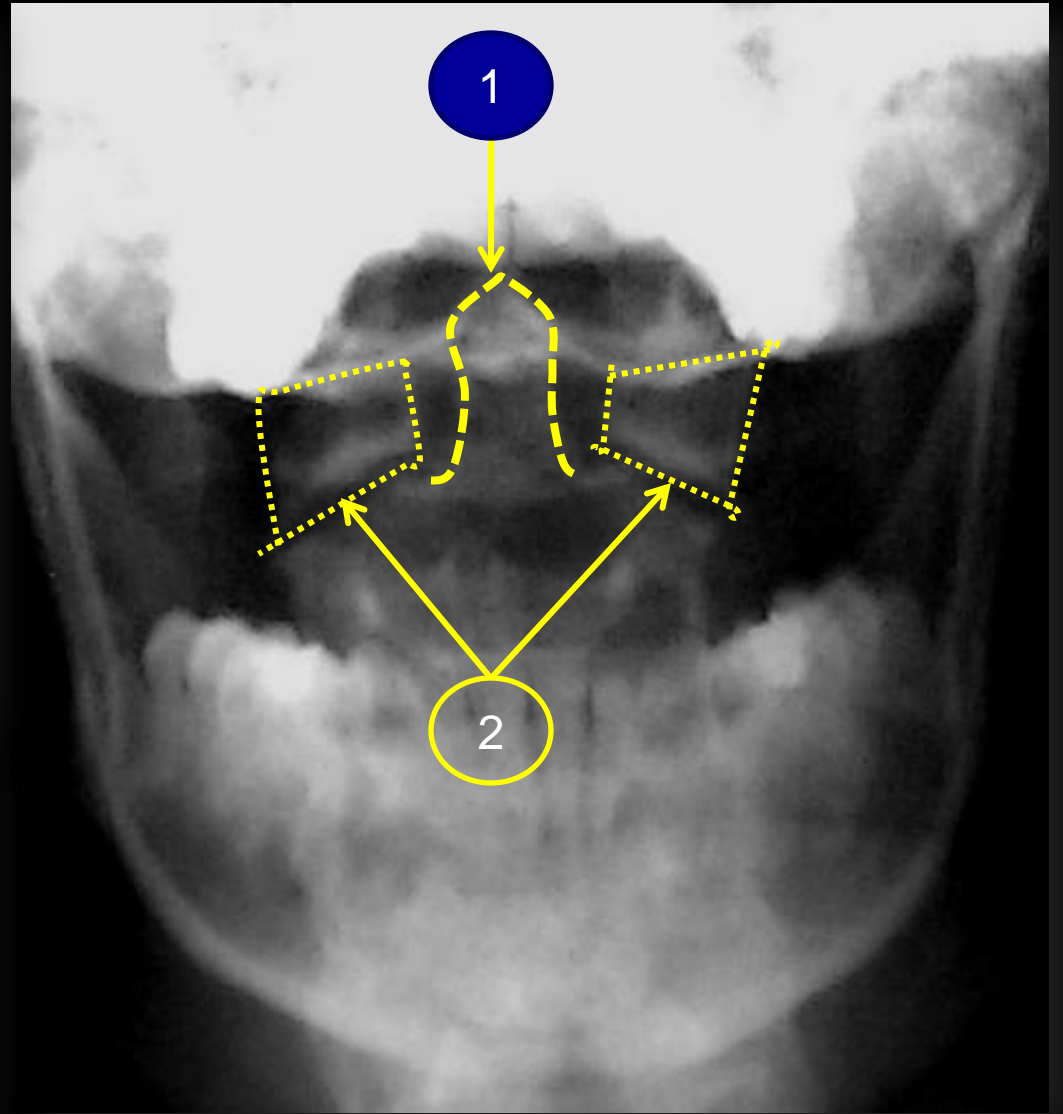
Axis (C2): posterosuperior view

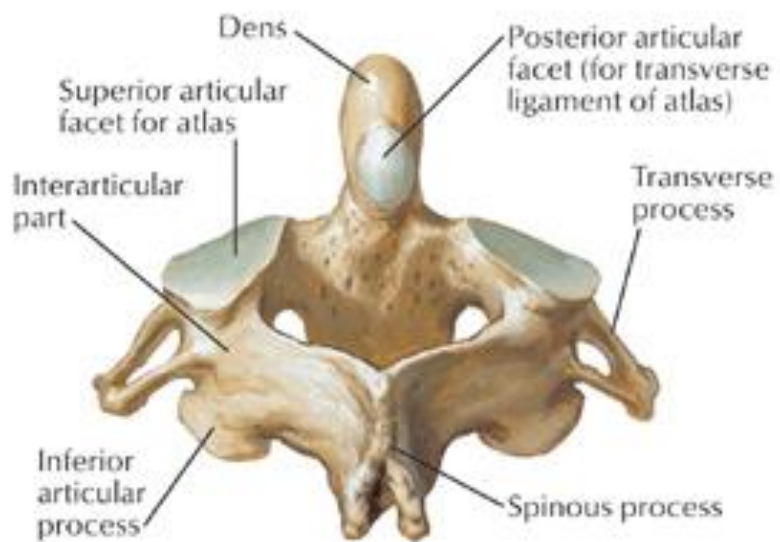
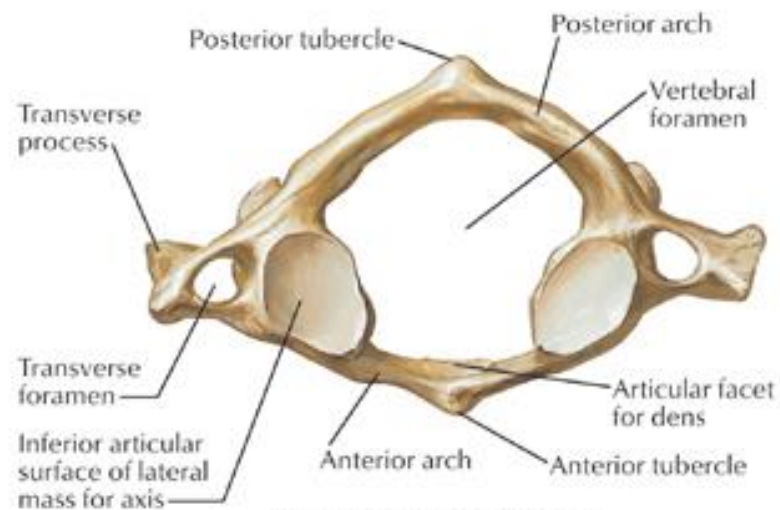
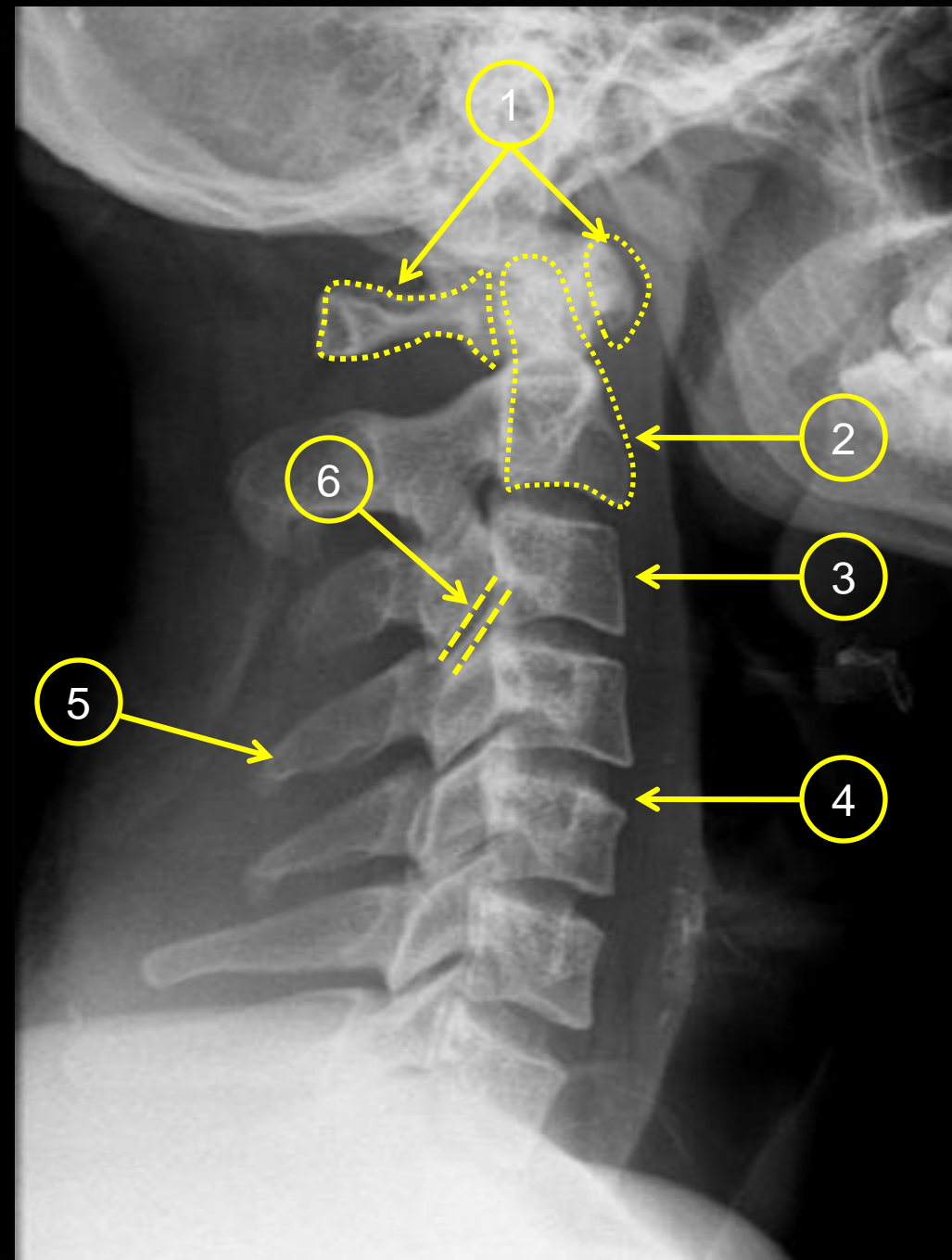
Occiput

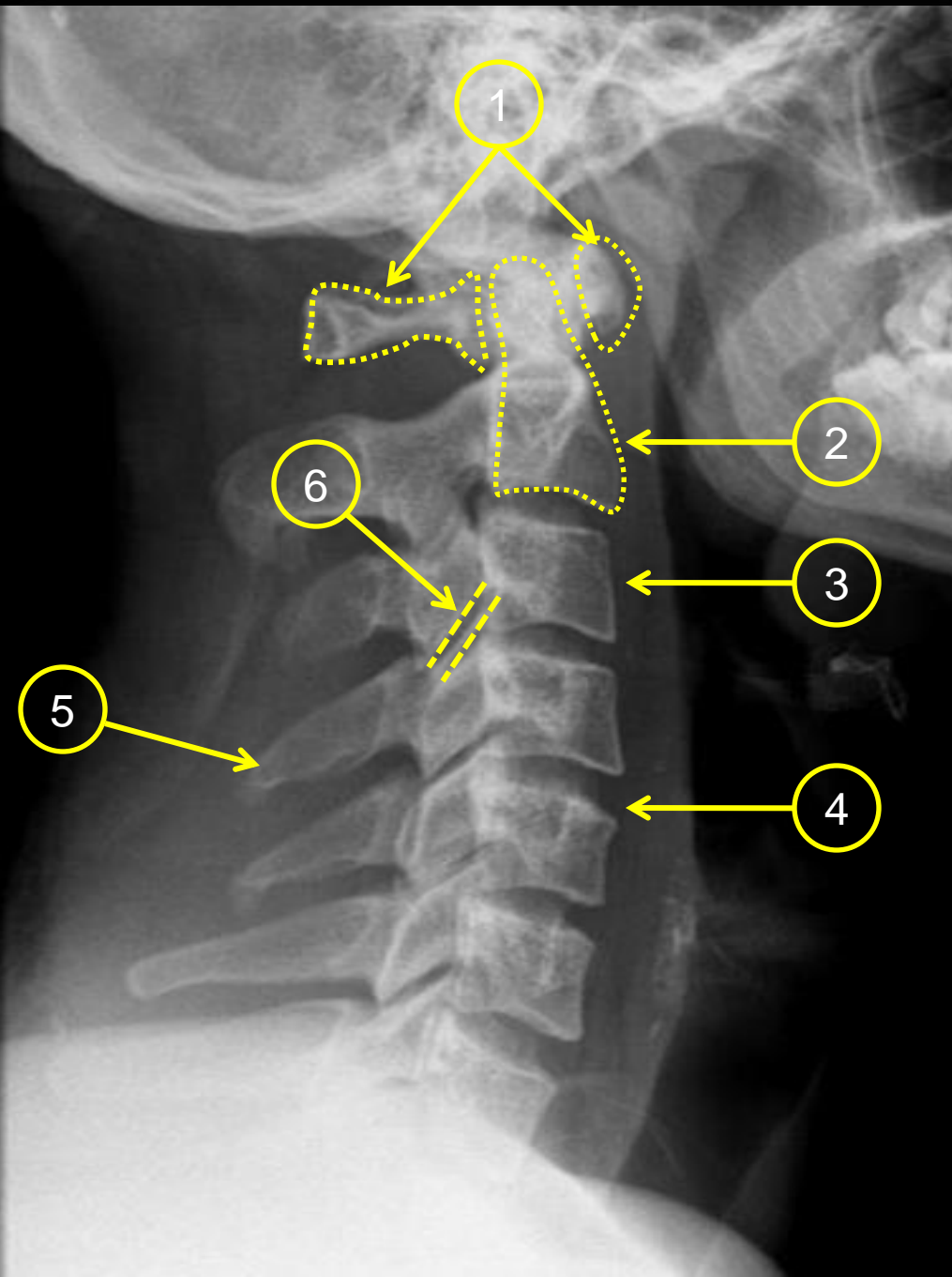
Atlas-C1

Axis-C2

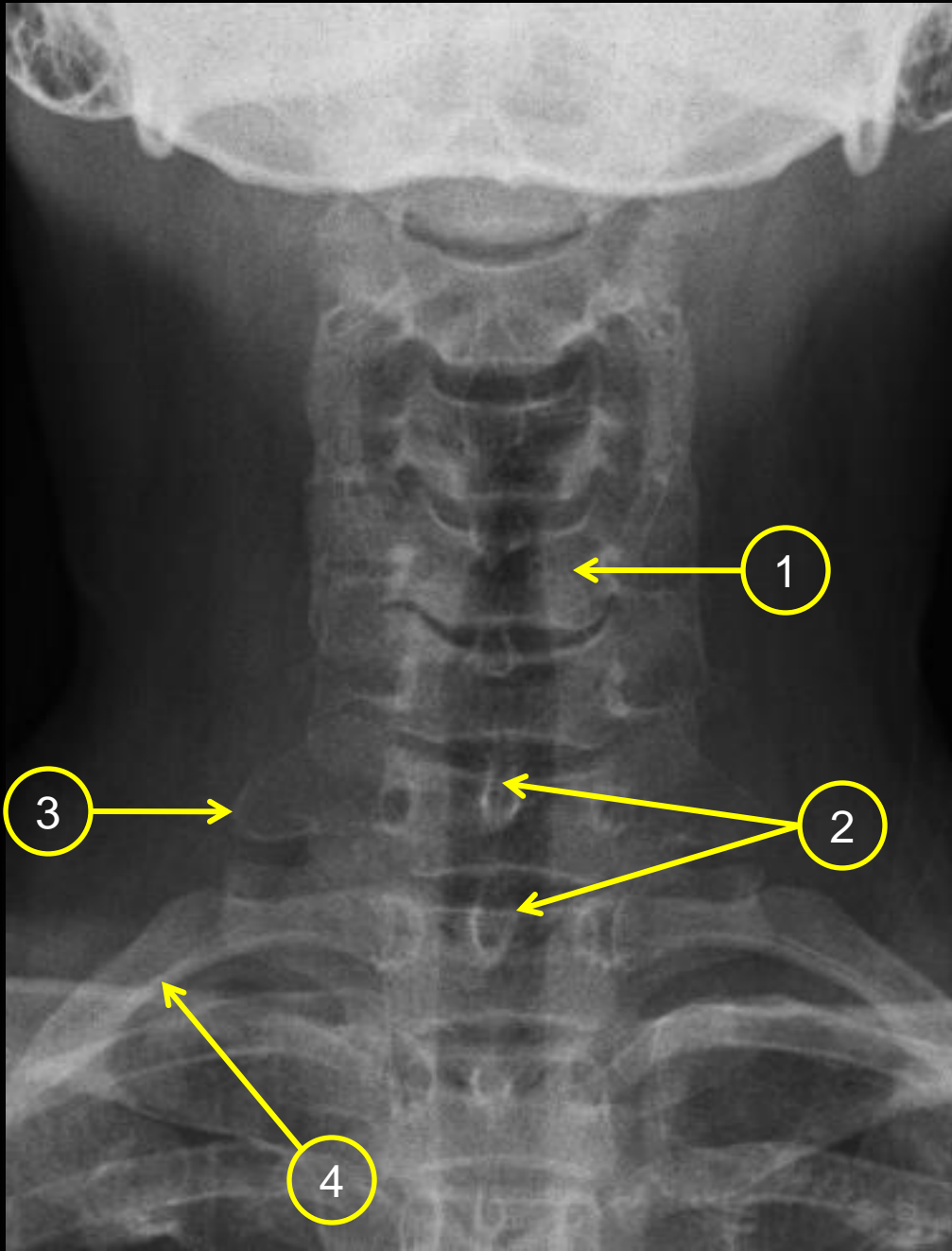


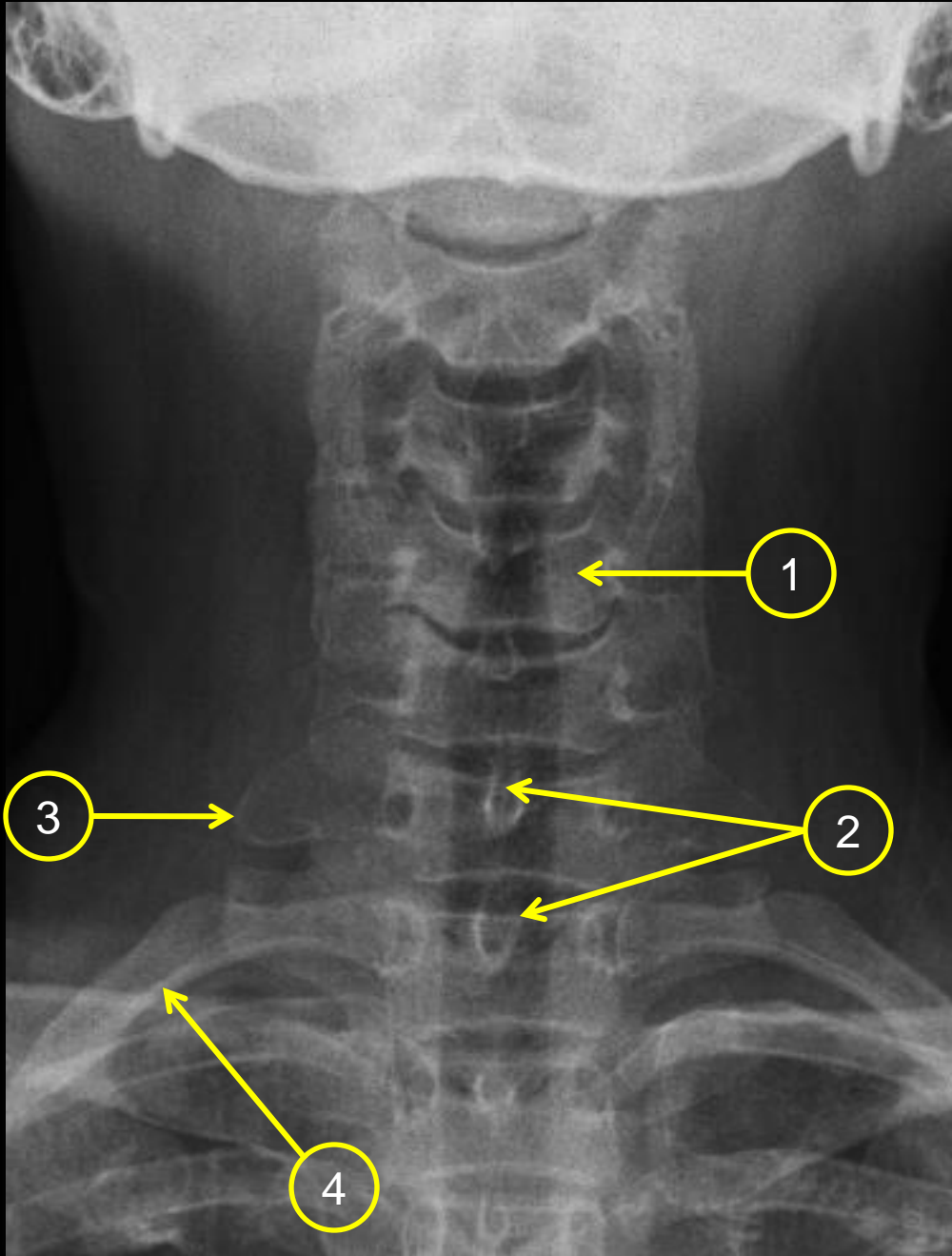






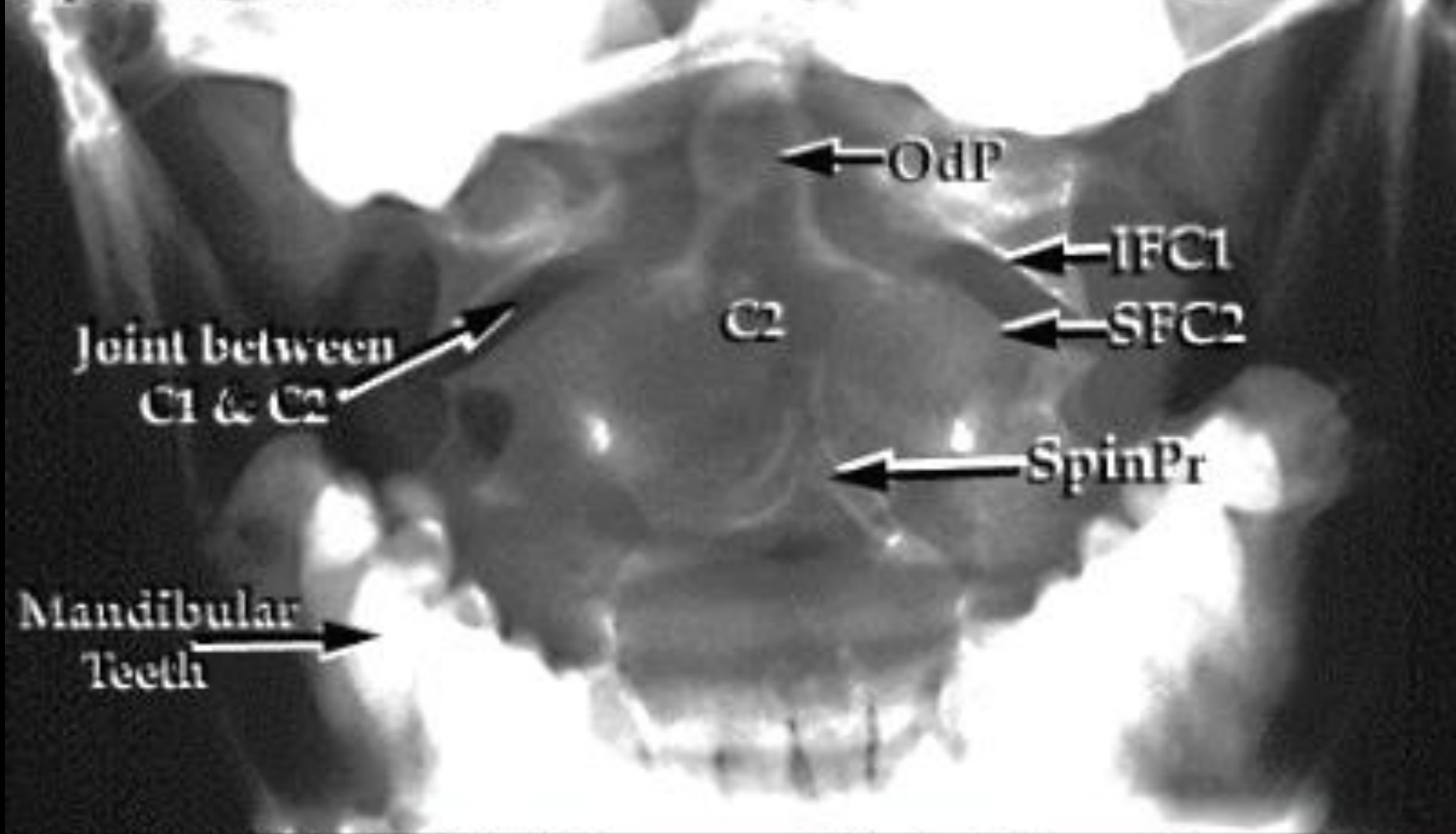
- 1. C1**
- 2. C2**
- 3. C3**
- 4. Intervertebral disc**
- 5. Spinous process of C4**
- 6. Facet joint**





1. Vertebral body
C5
2. Spinous process
3. Transverse
process
4. First rib

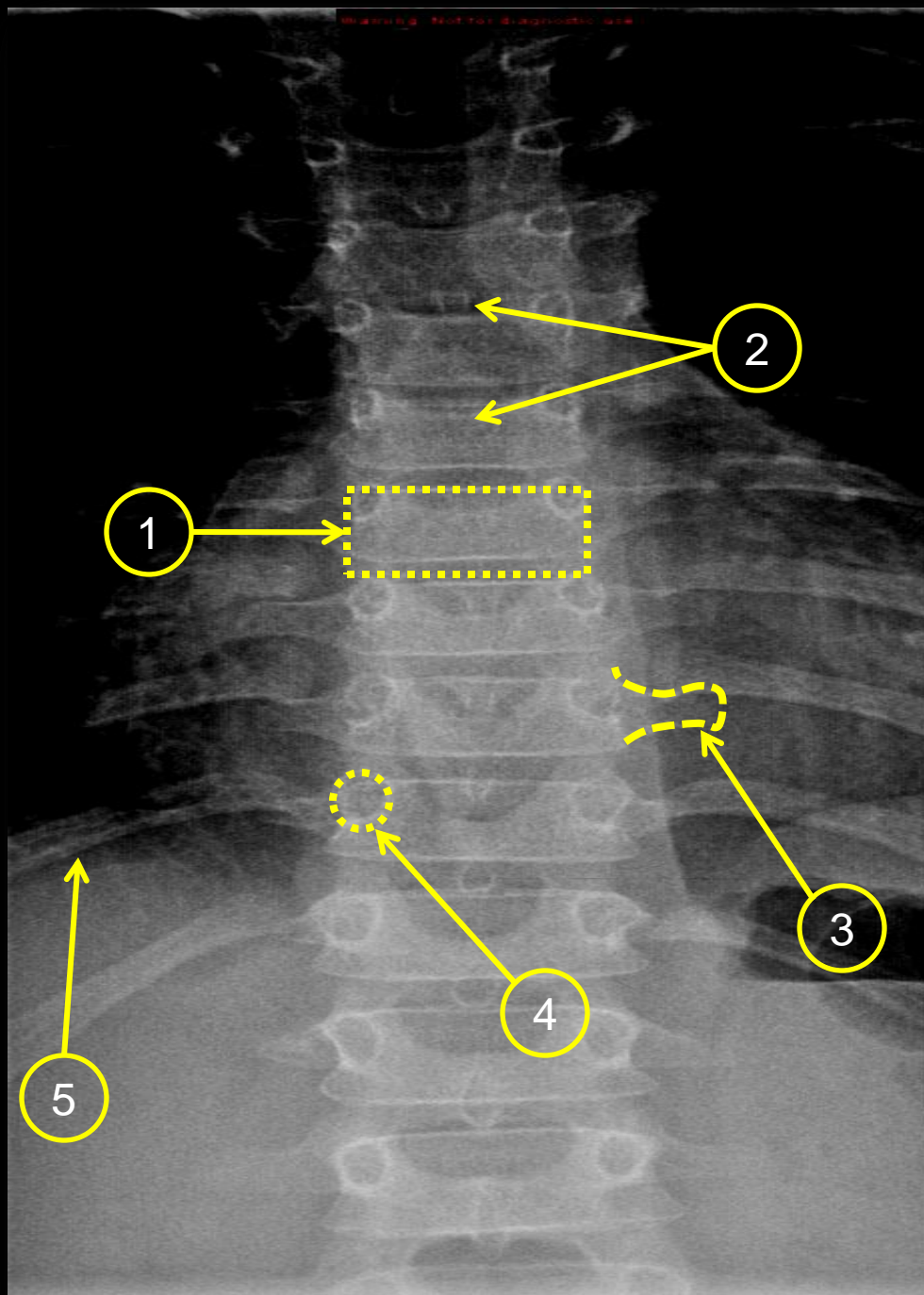
AP
Open Mouth View

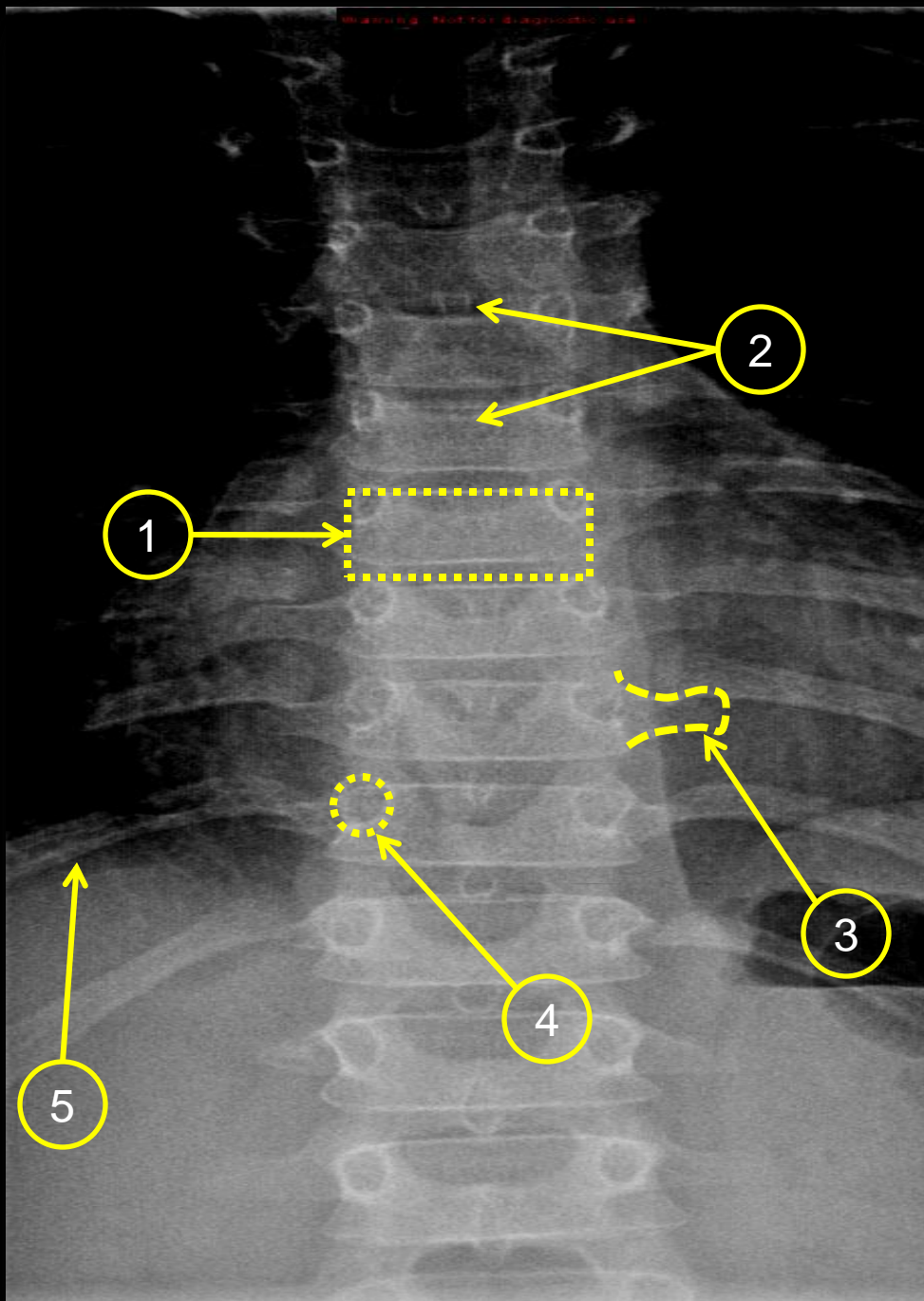


OdP=Odontoid Process (dens)
IFC1=Inferior Facet of C1
SFC2=Superior Facet of C2

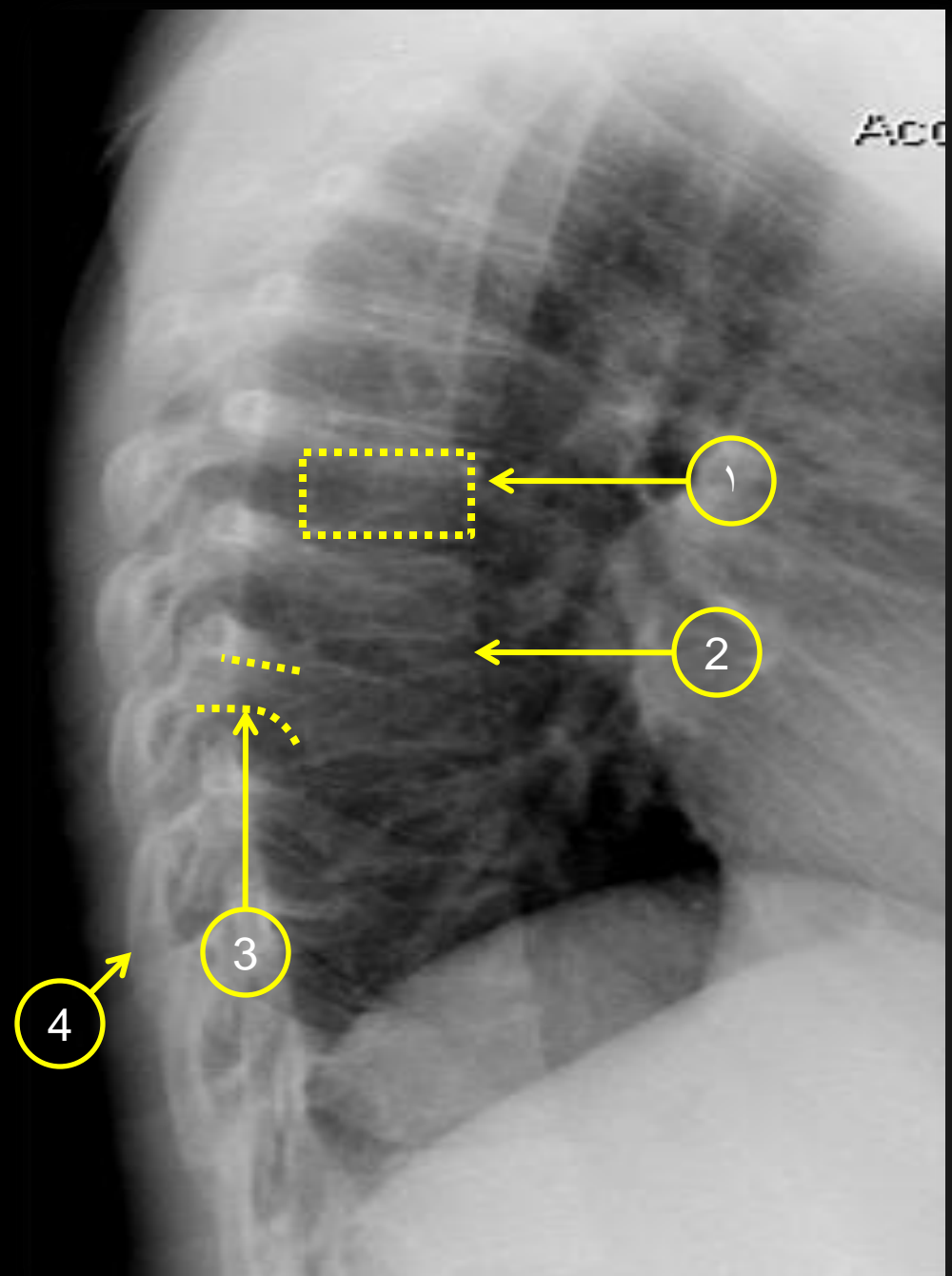
SpinPr=Spinous Process of C2
C2=Cervical Vertebra 2 (Axis)

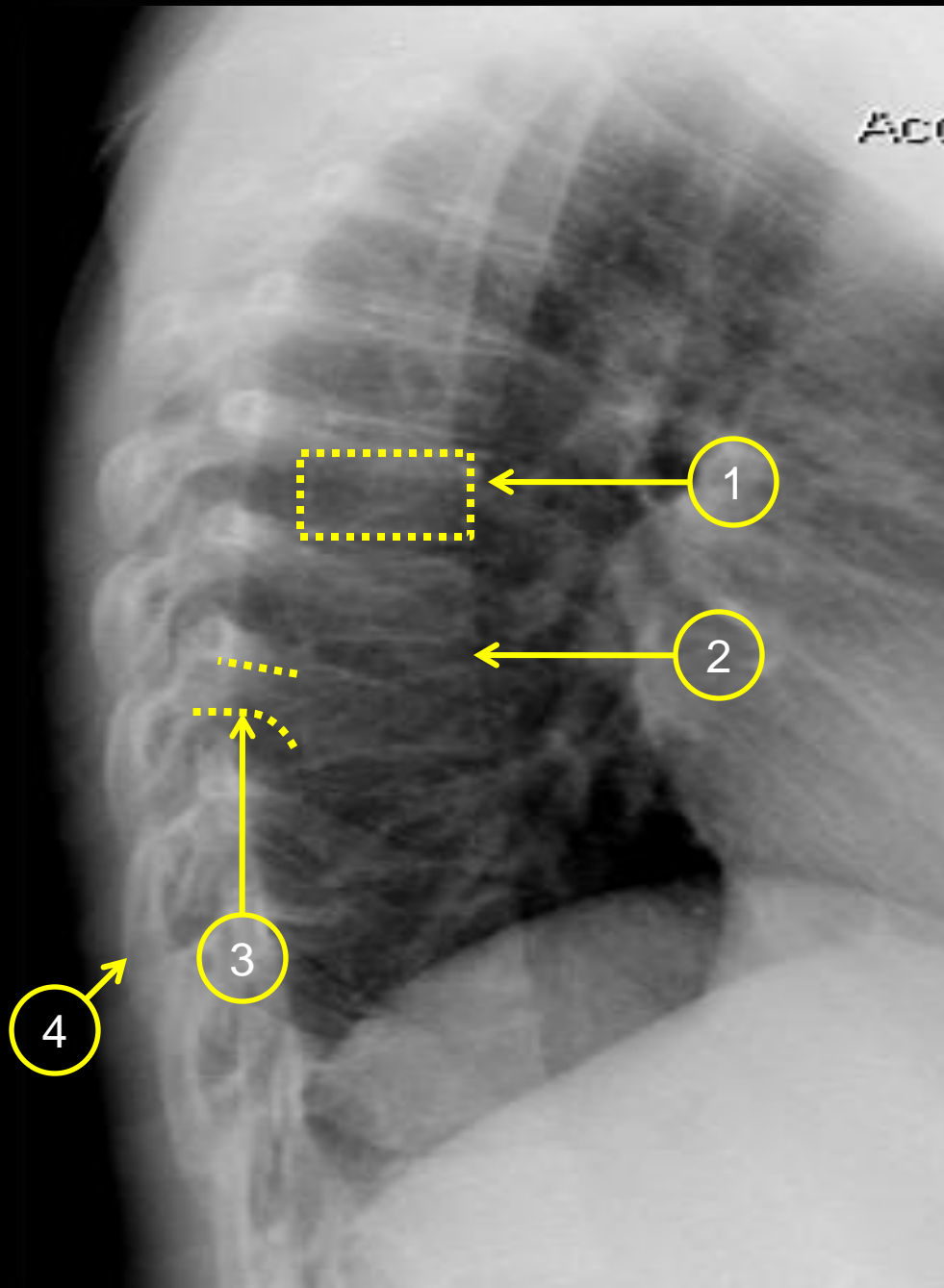
Thoracic spine





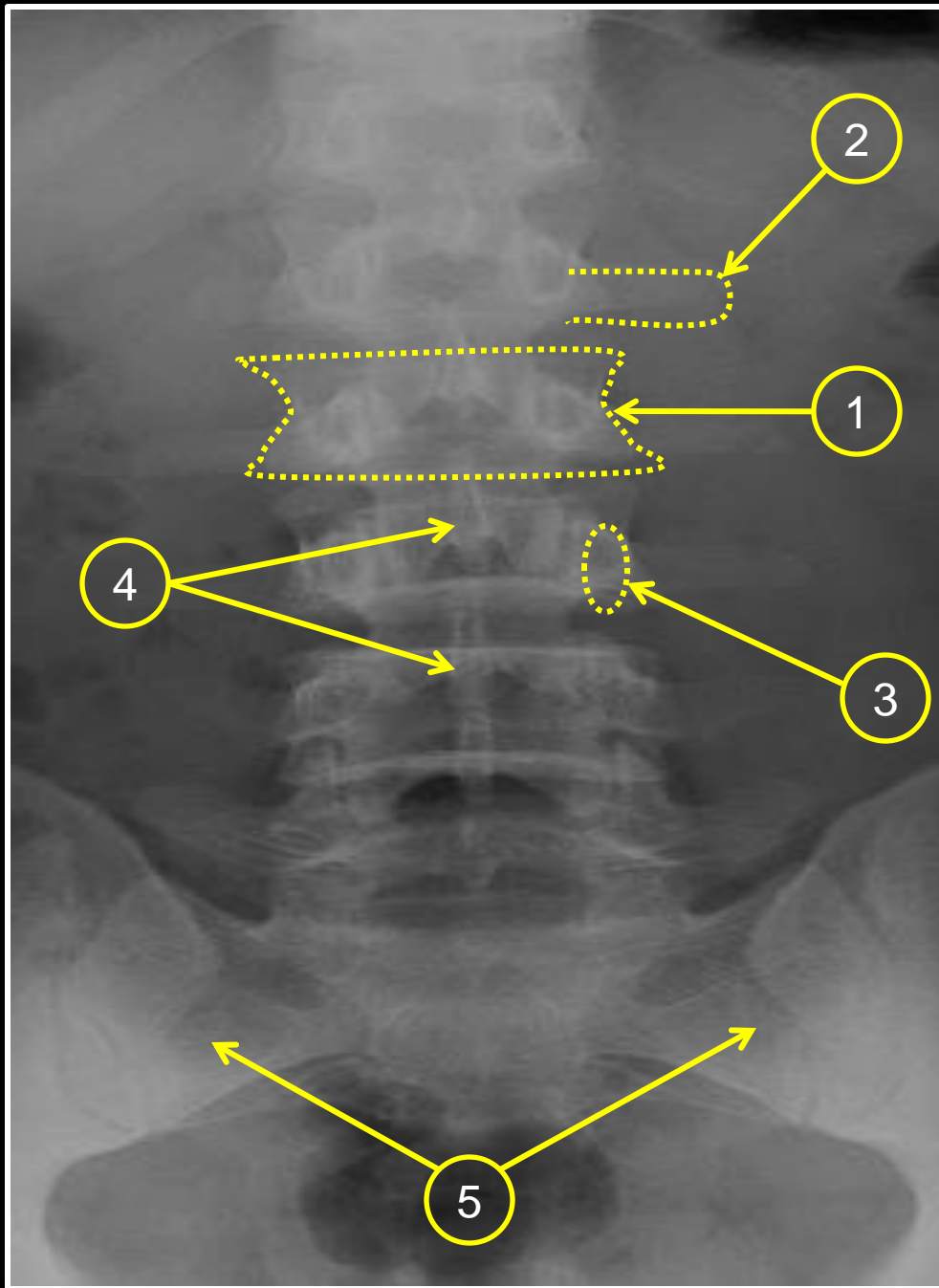
1. Vertebral body
2. Spinous process
3. Transverse process
4. Pedicle
5. Rib



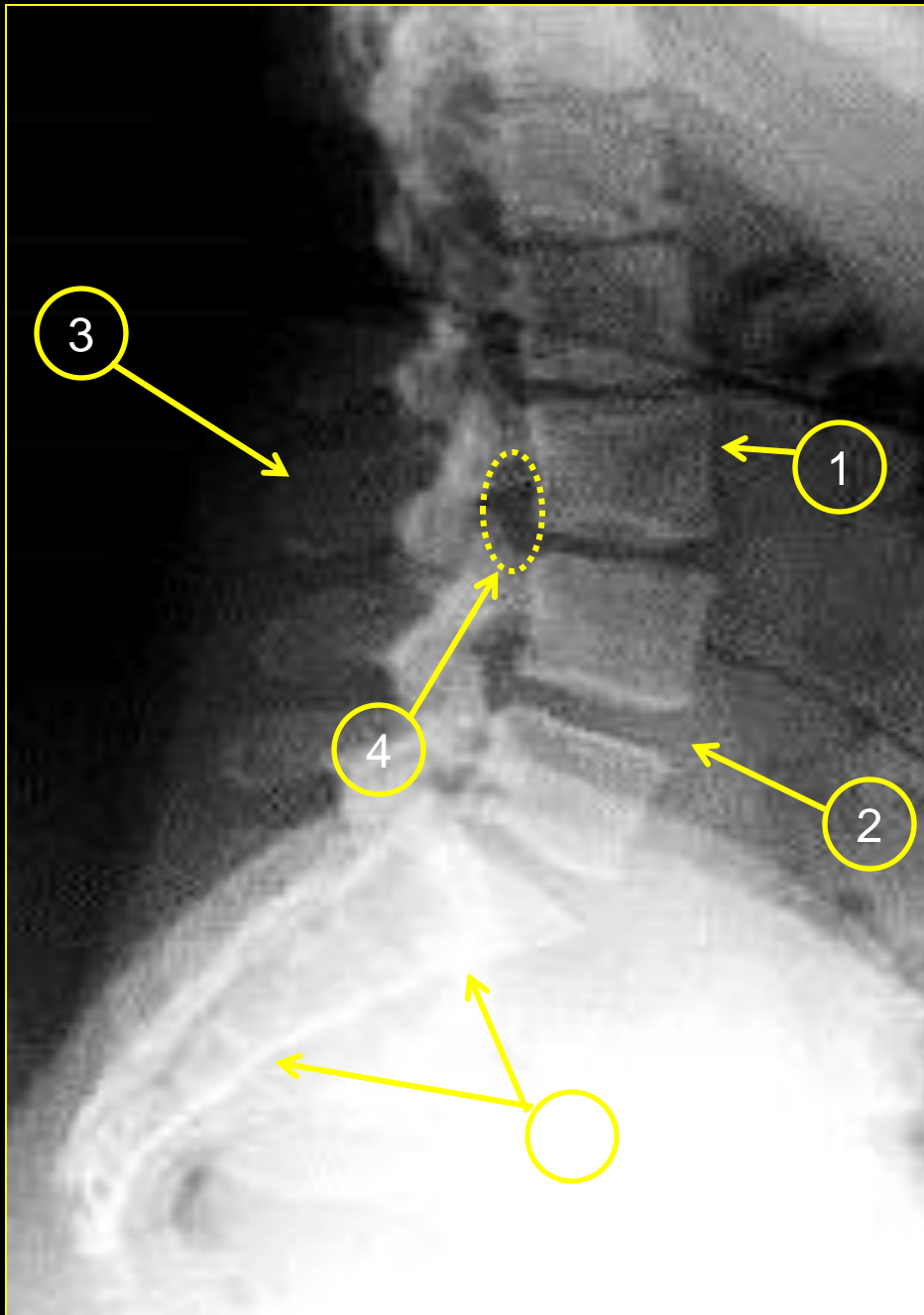


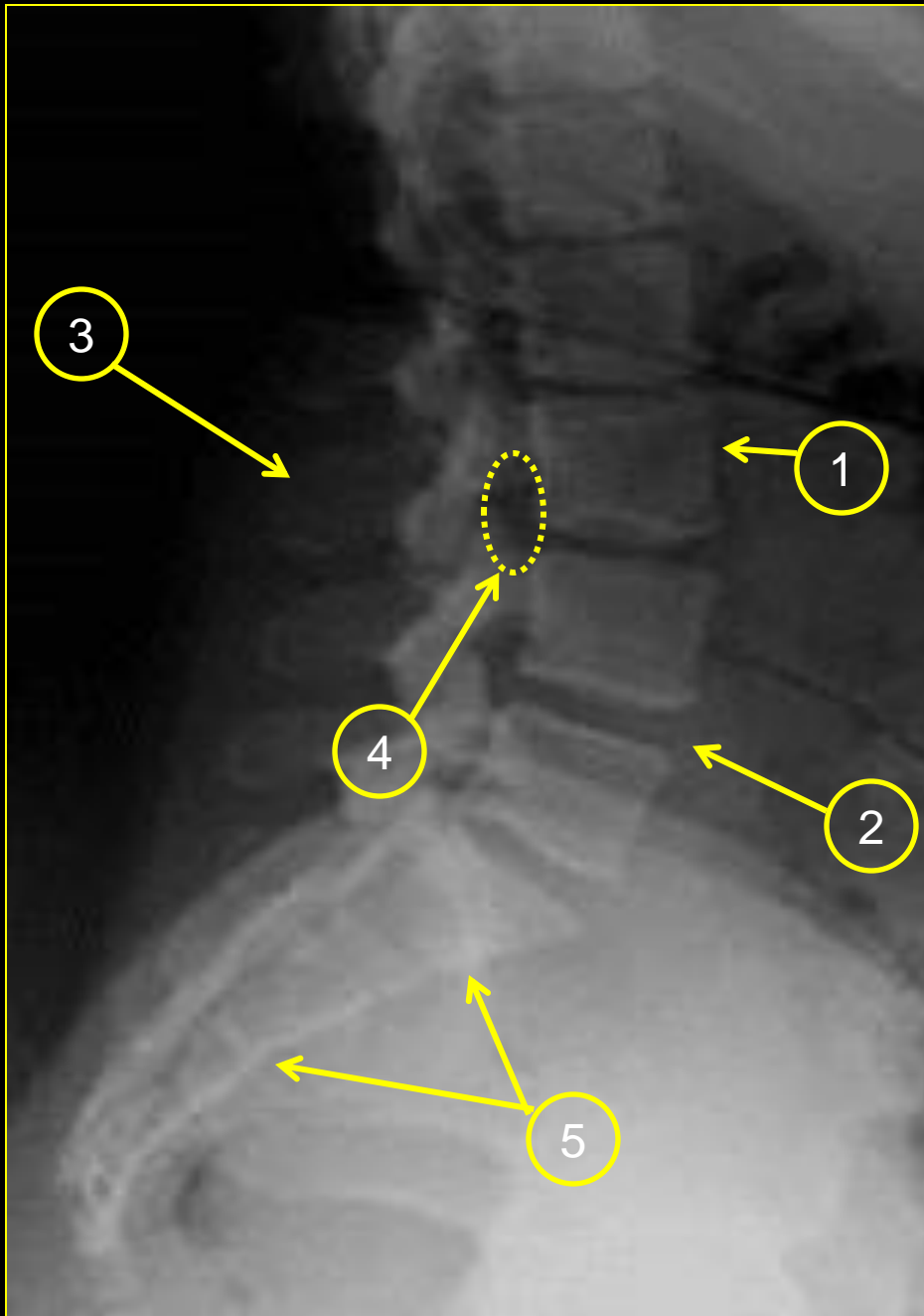
1. Vertebral body
2. Intrvertebral disc
3. Pedicle
4. Rib

Lumbar spine



1. Vertebral body
2. Transverse process
3. Pedicle
4. Spinous process
5. Sacrum





- 1. Vertebral body L3**
- 2. Intrvertebral disc**
- 3. Spinous process**
- 4. Neural foramen**
- 5. Sacrum**





CT scan



I 544



















I-544































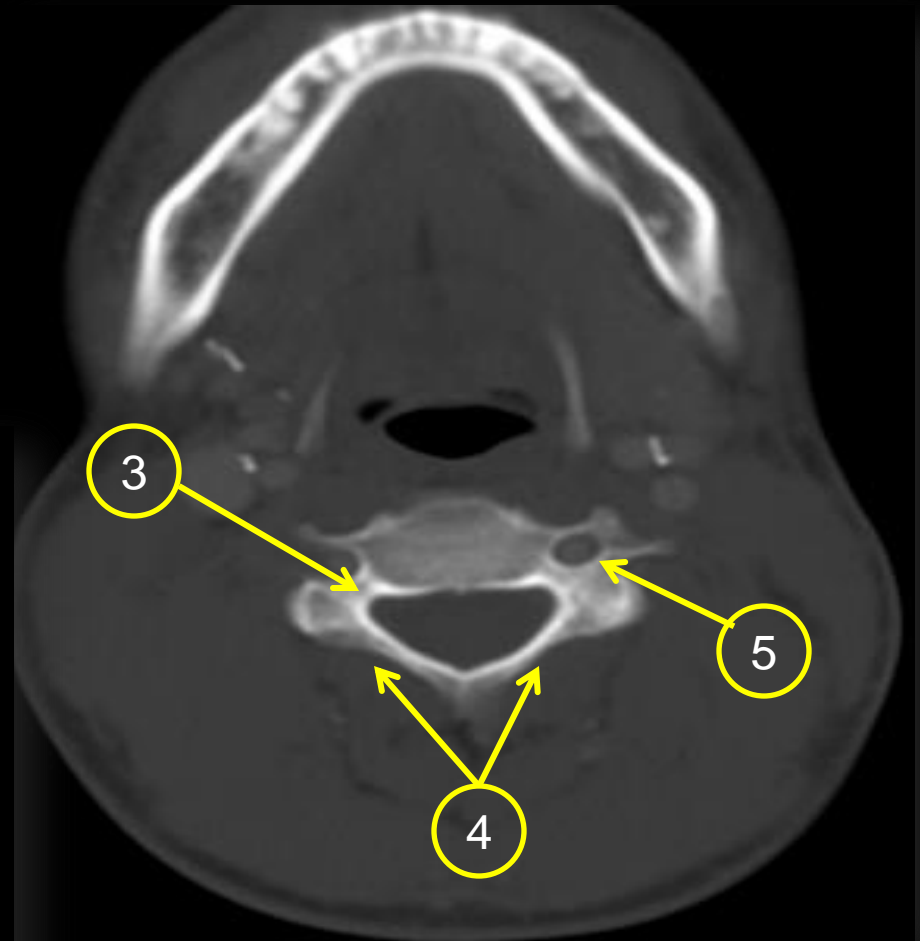
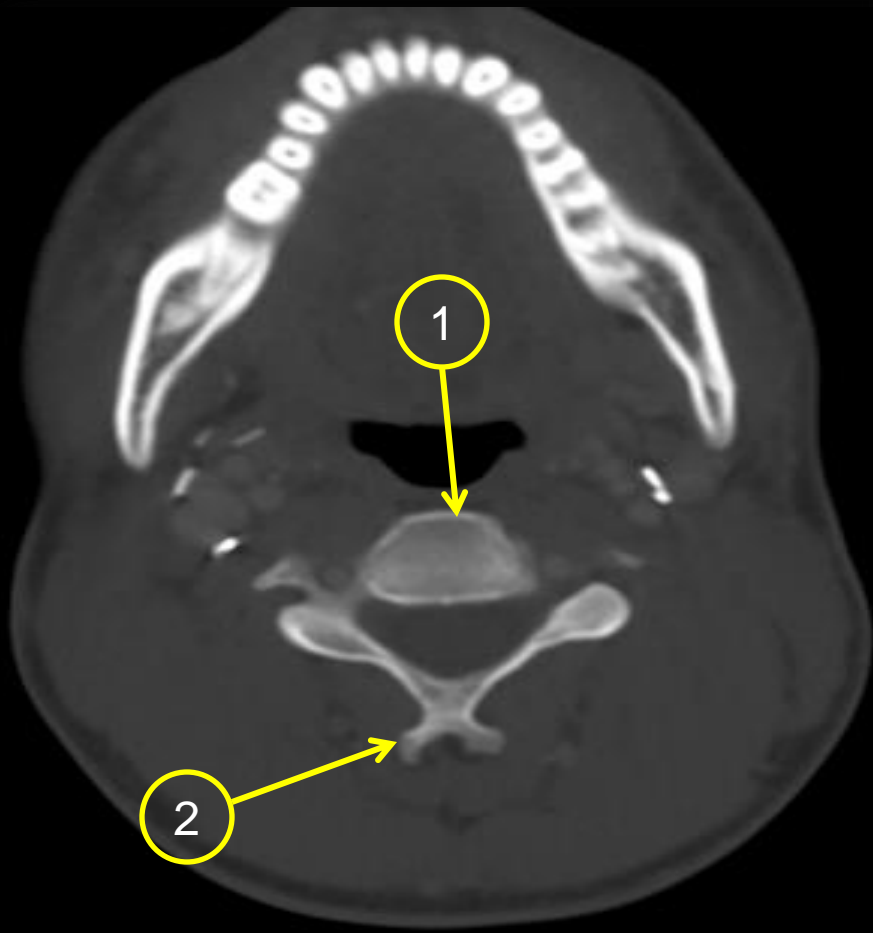




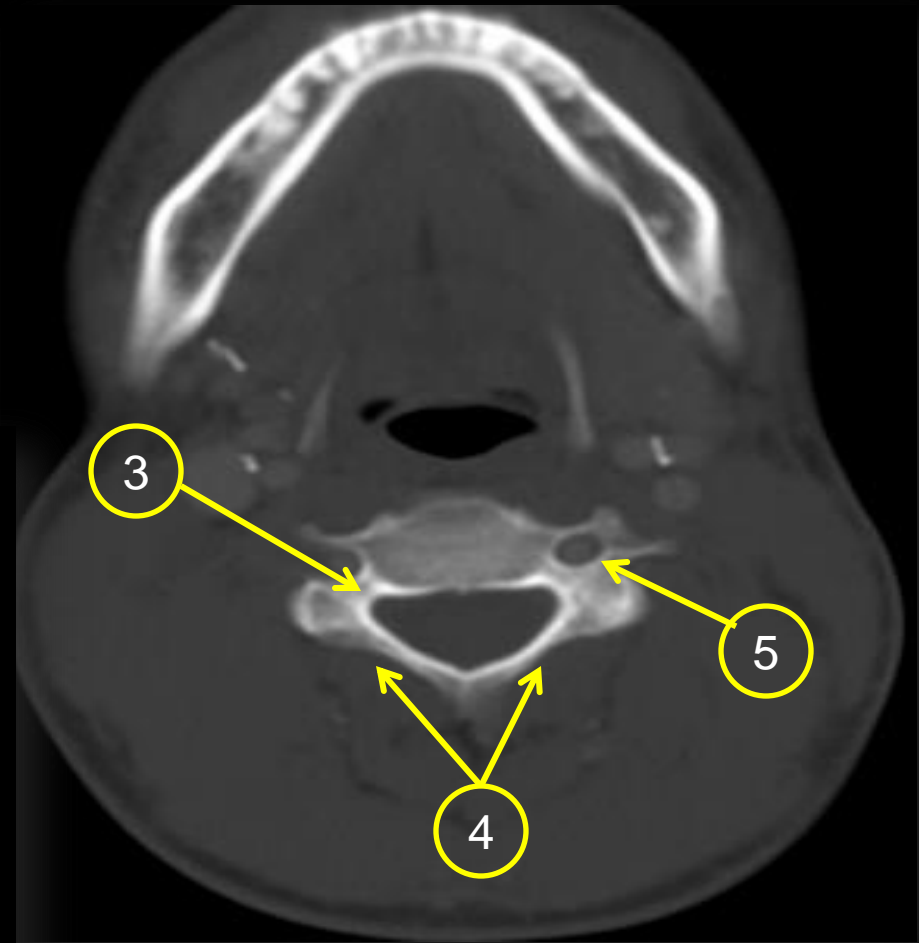
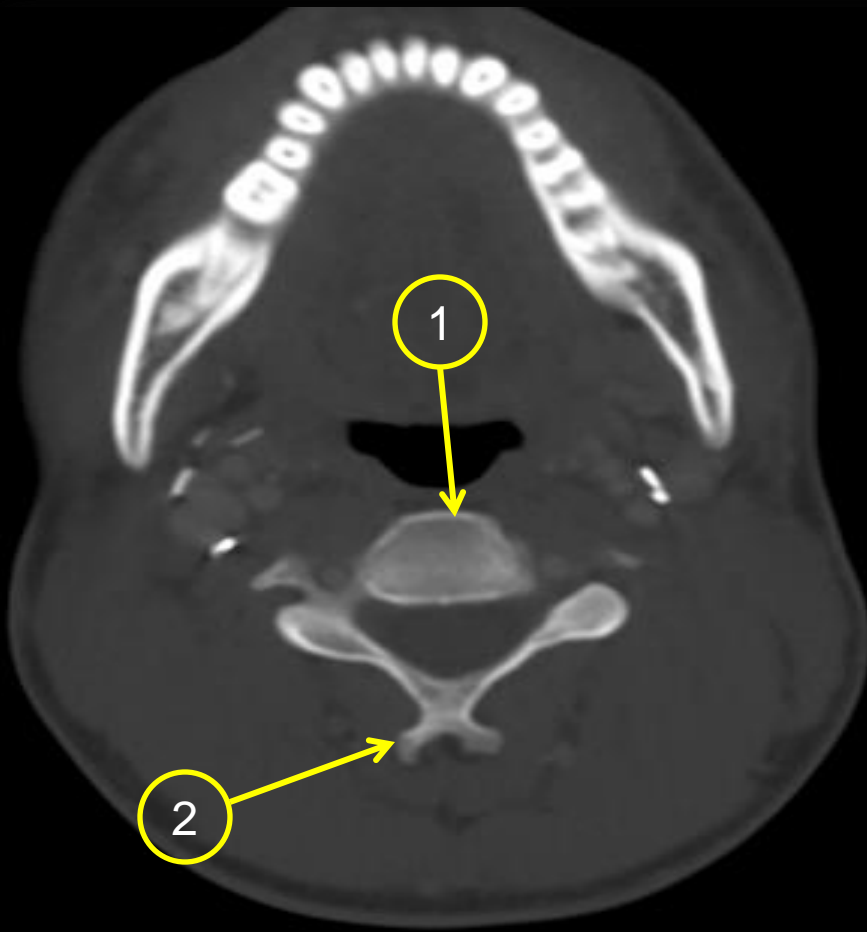


Cervical spine

Cervical spine



Cervical spine

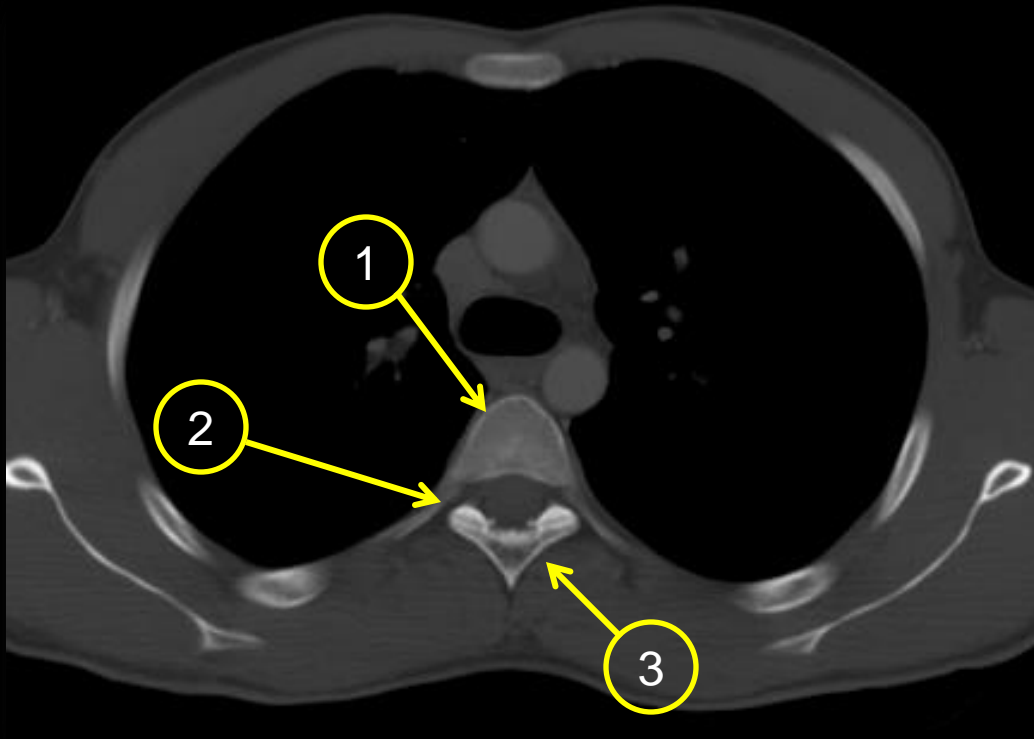
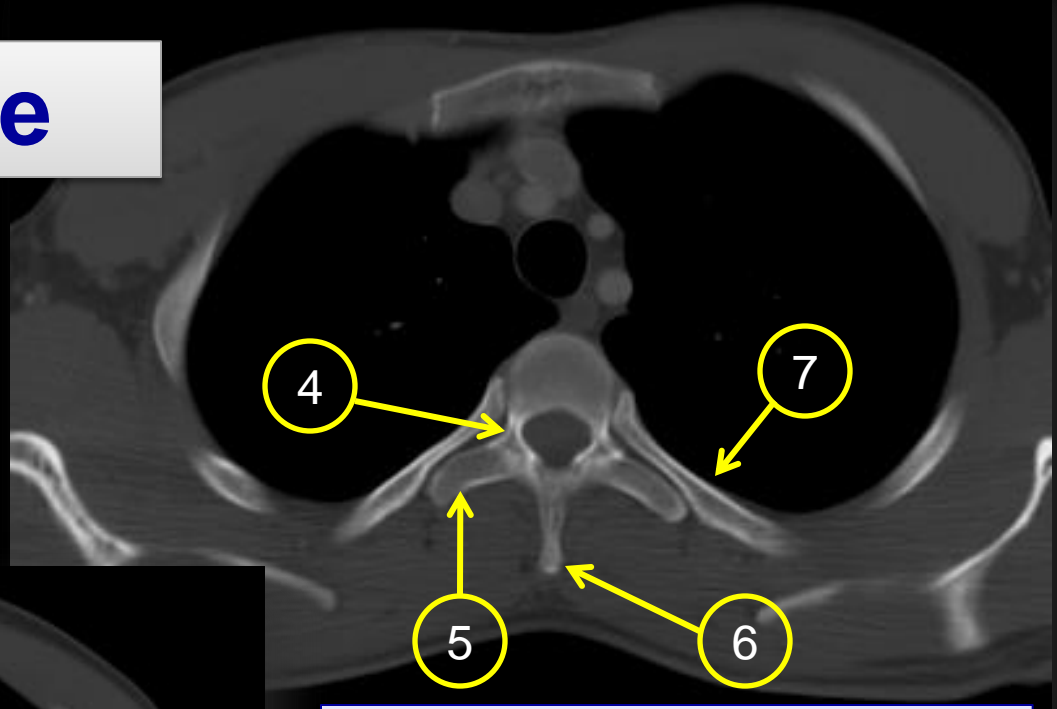


1. Vertebral body
2. Spinous process
3. Pedicle
4. Lamina
5. Transverse foramen

Dorsal spine

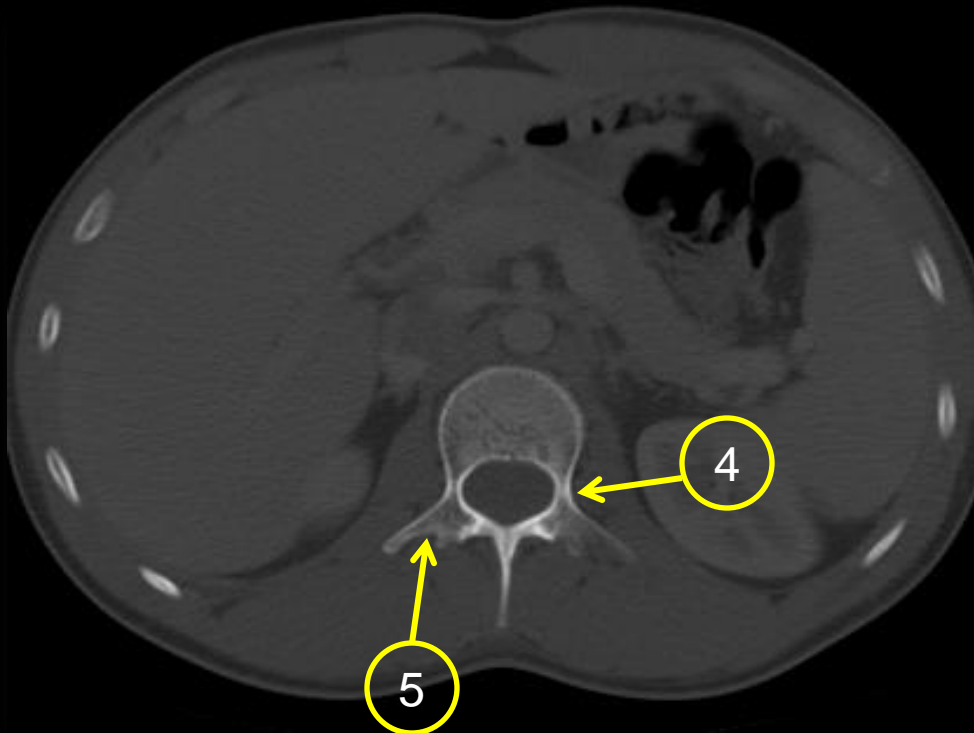
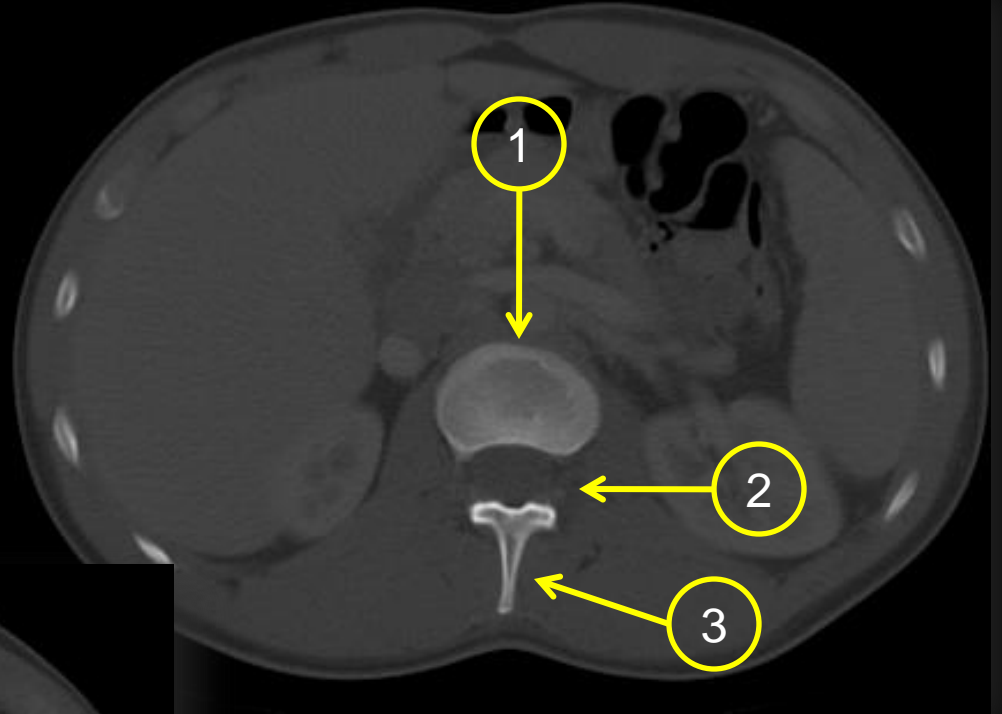


Thoracic spine

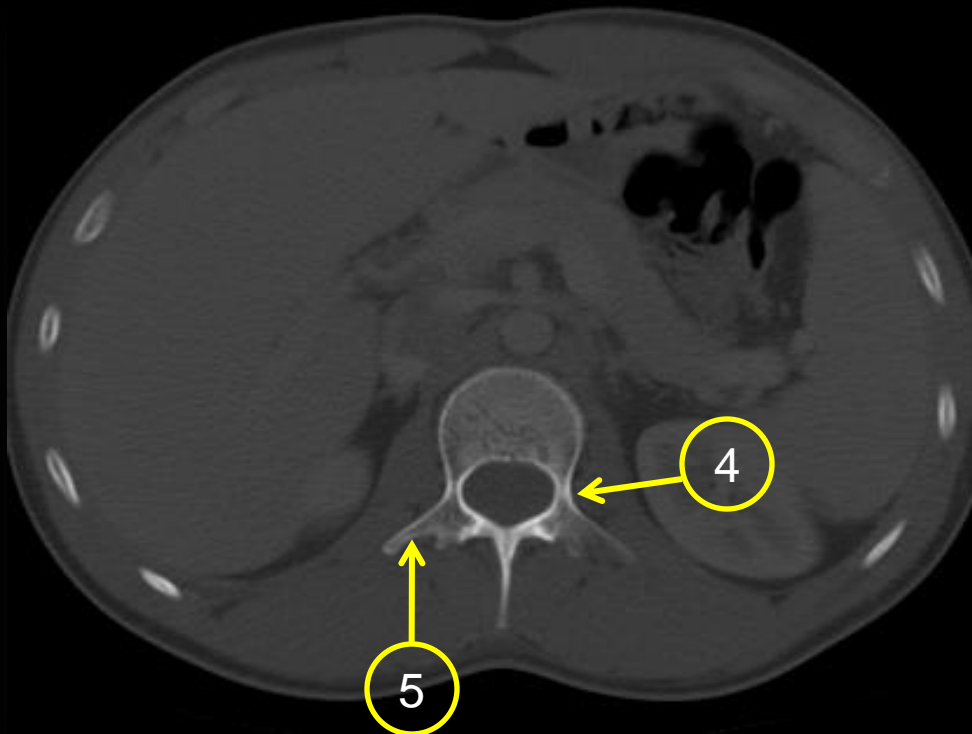
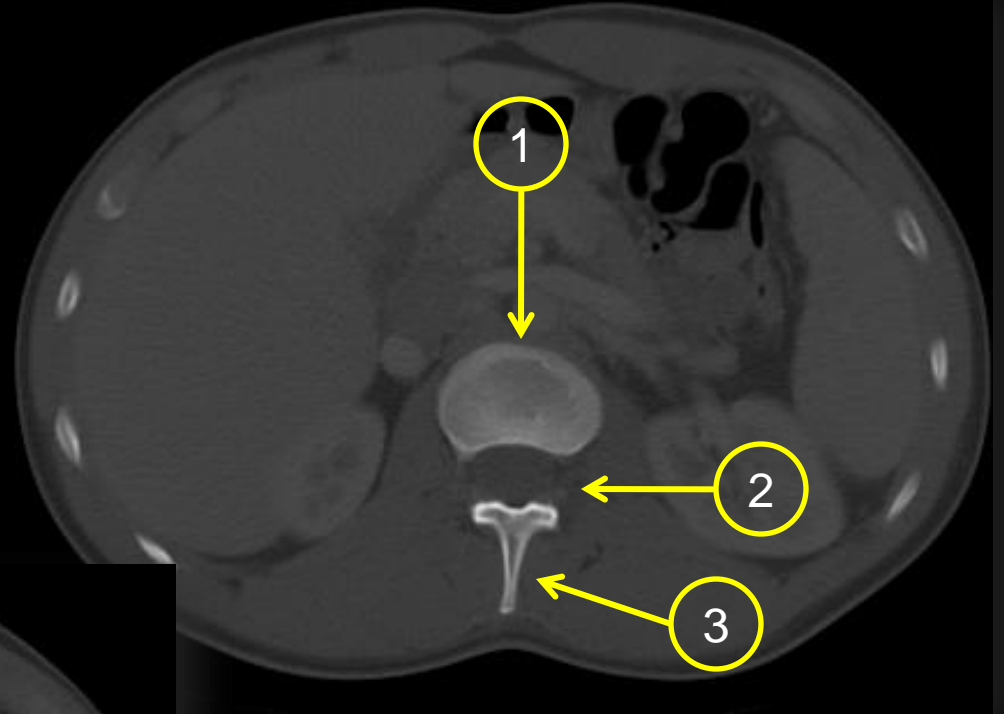


1. Vertebral body
2. Neural foramen
3. Lamina
4. Pedicle
5. Transverse process
6. Spinous process
7. Rib

Lumbar spine

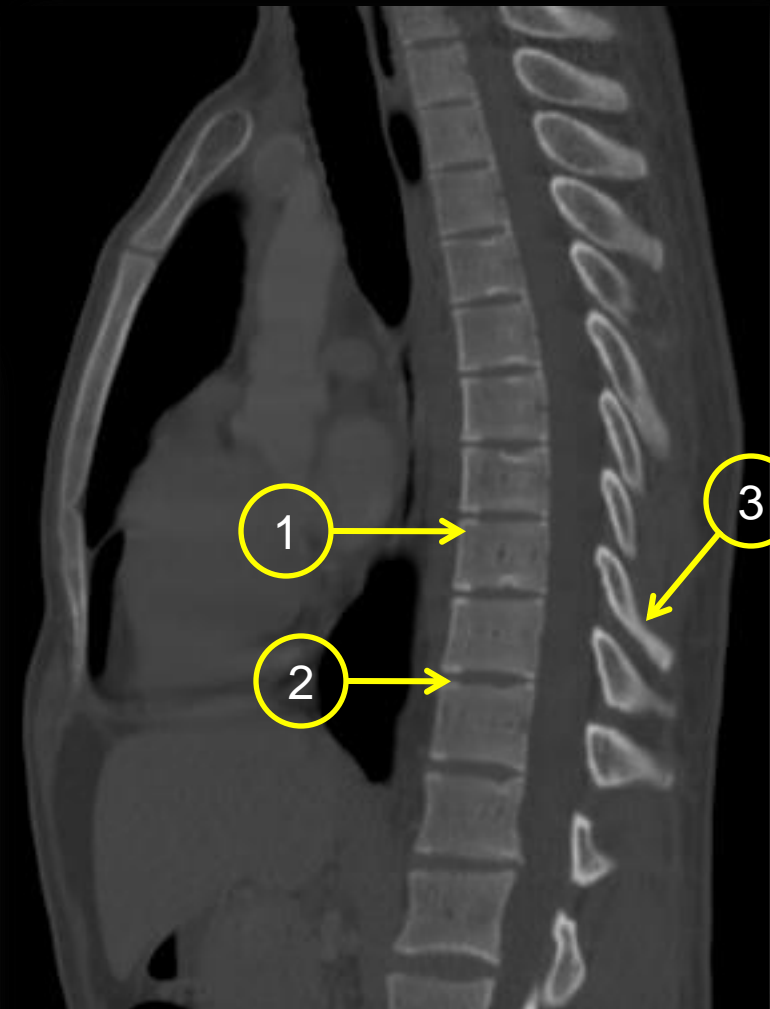
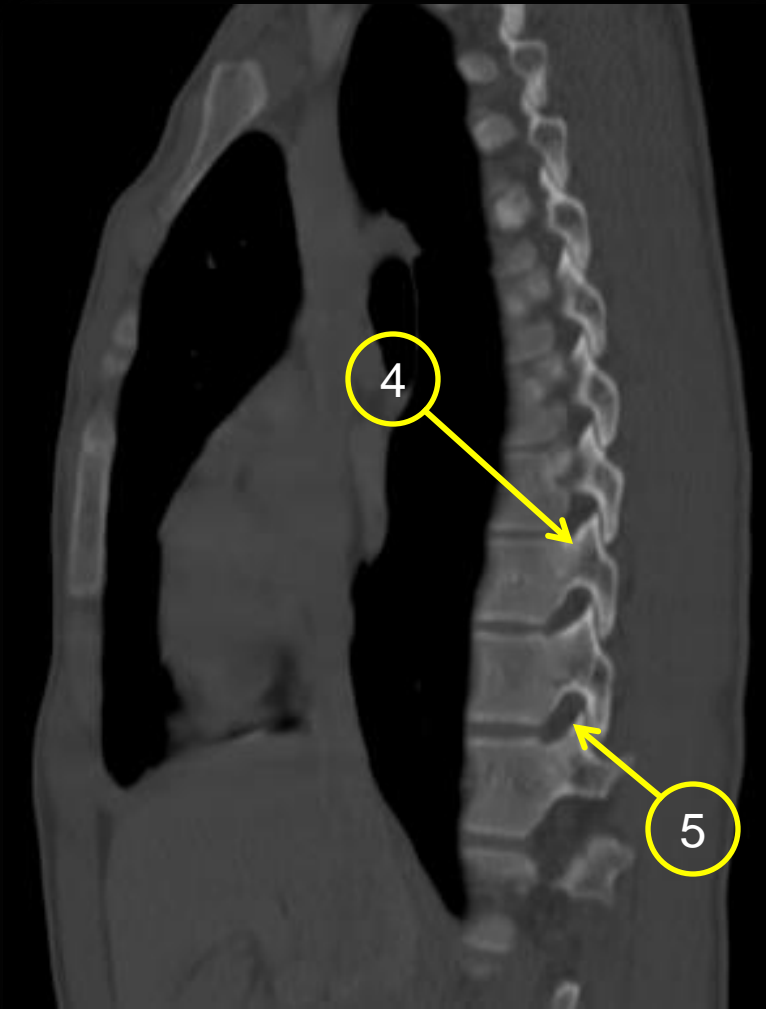


Lumbar spine

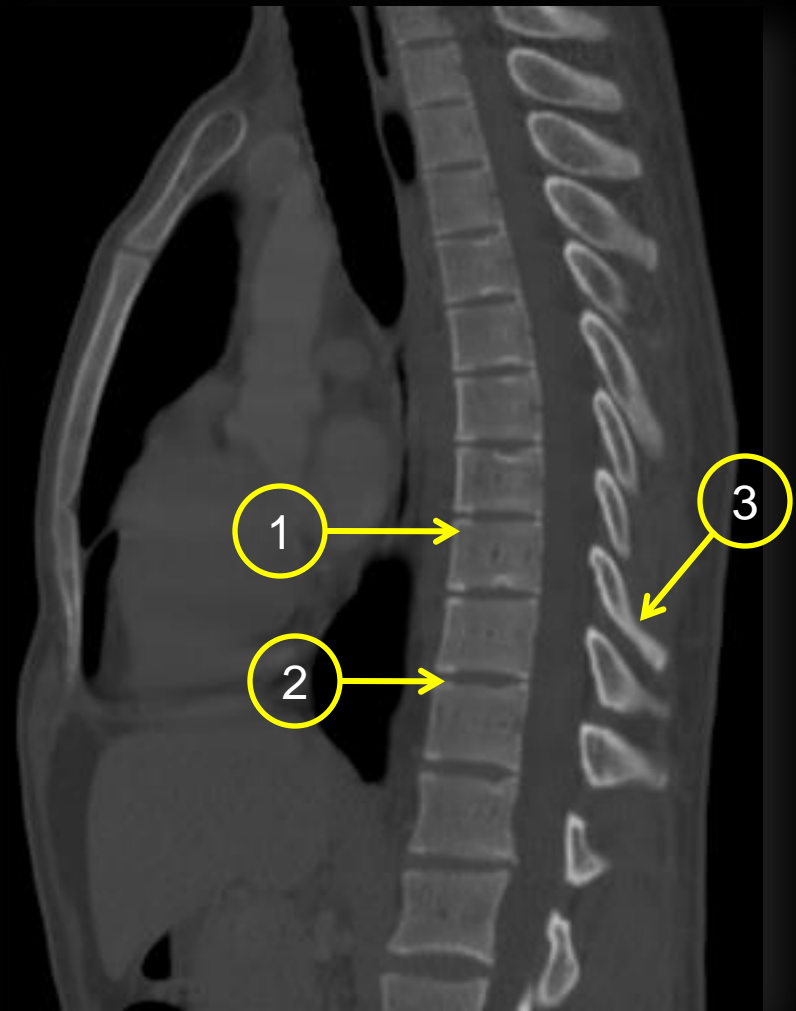
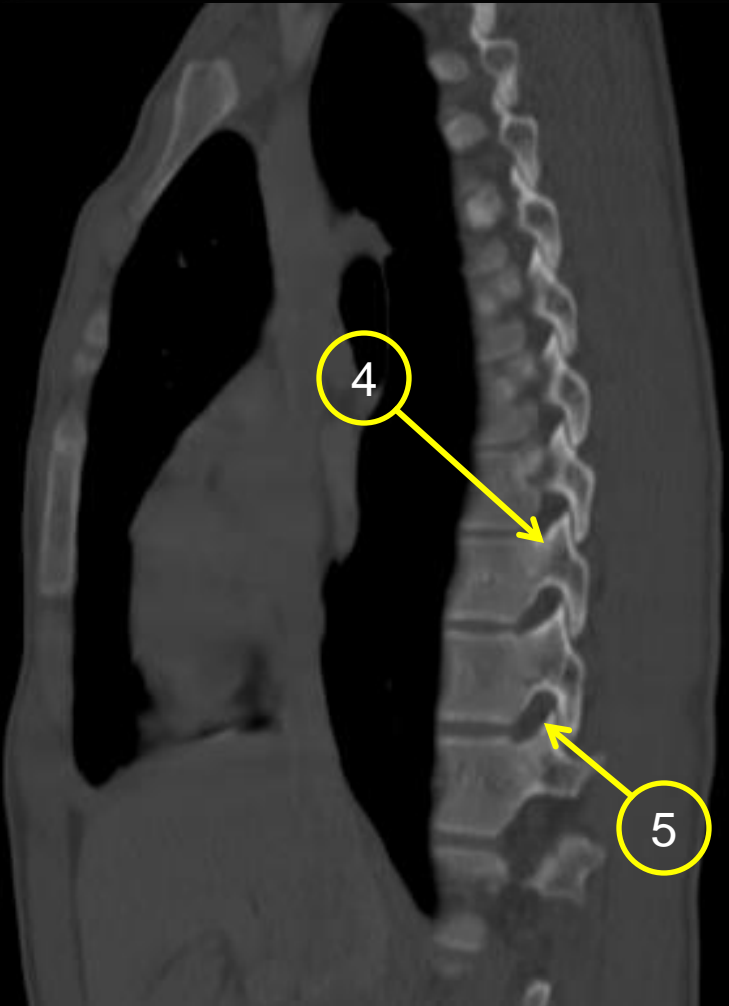


1. Vertebral body
2. Neural foramen
3. Spinous process
4. Pedicle
5. Transverse process

Dorsal spine

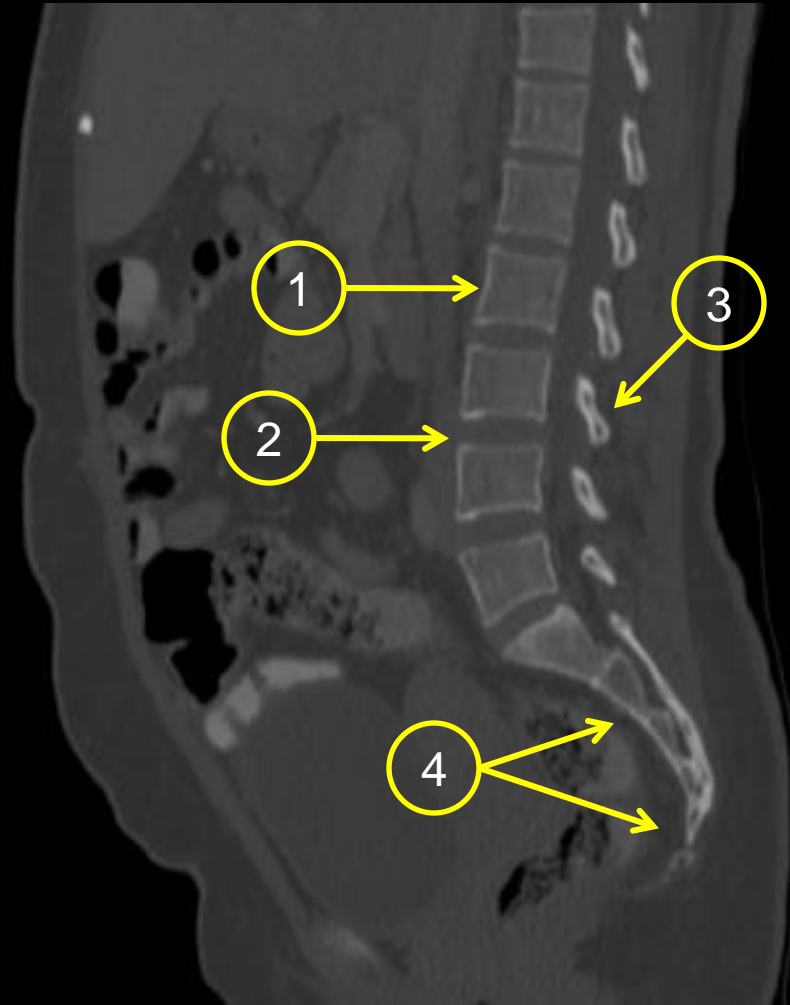
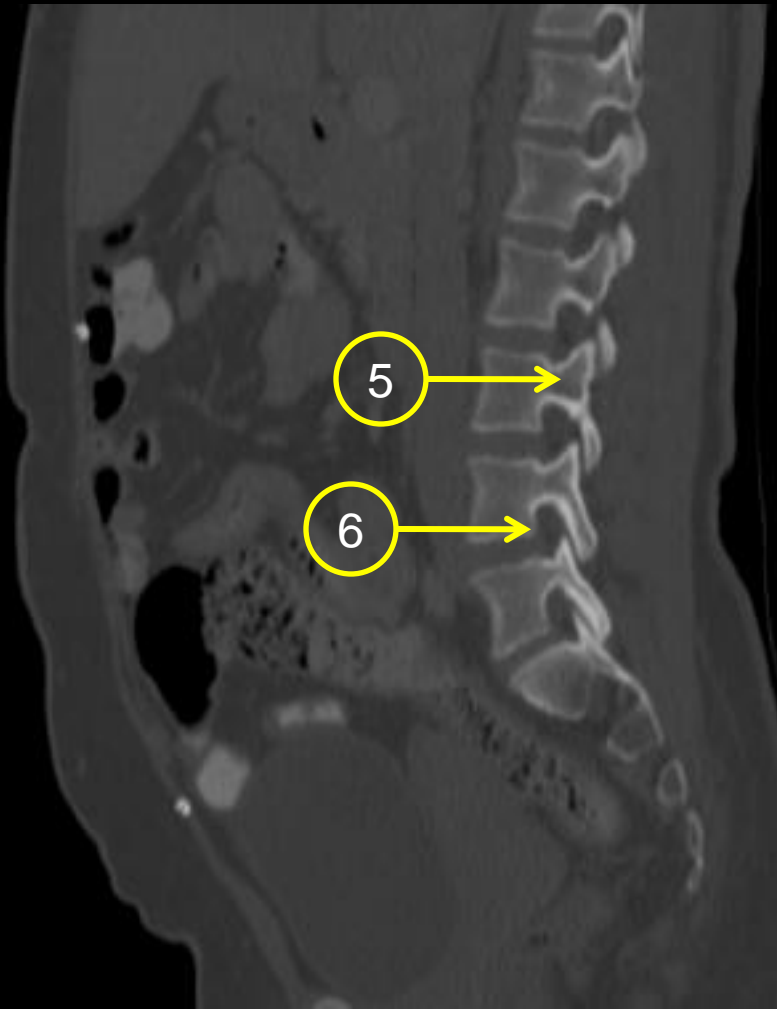


Dorsal spine

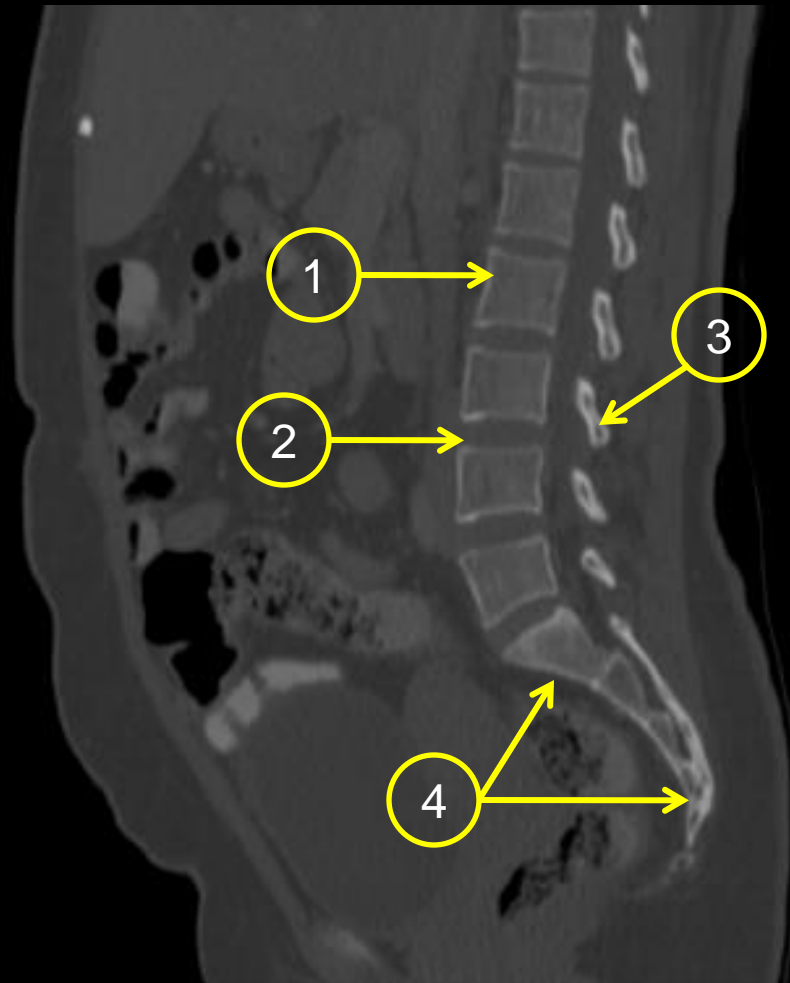
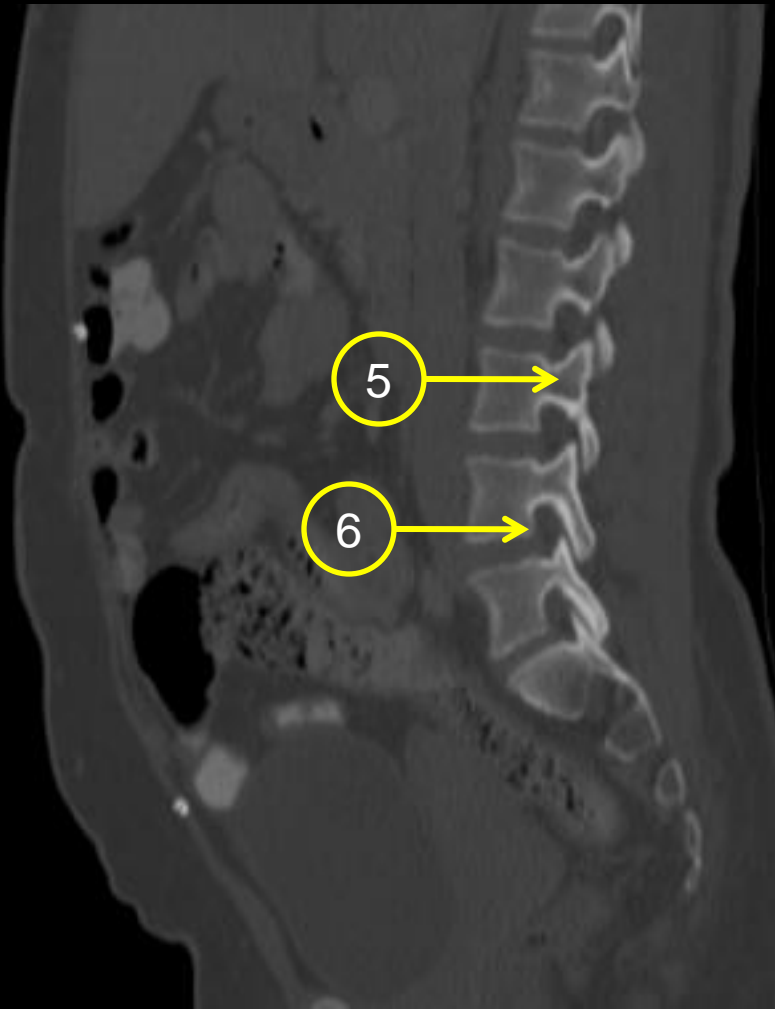


1. Vertebral body
2. Intravertebral disc
3. Spinous process
4. Pedicle
5. Neural foramen

Lumbosacral spine



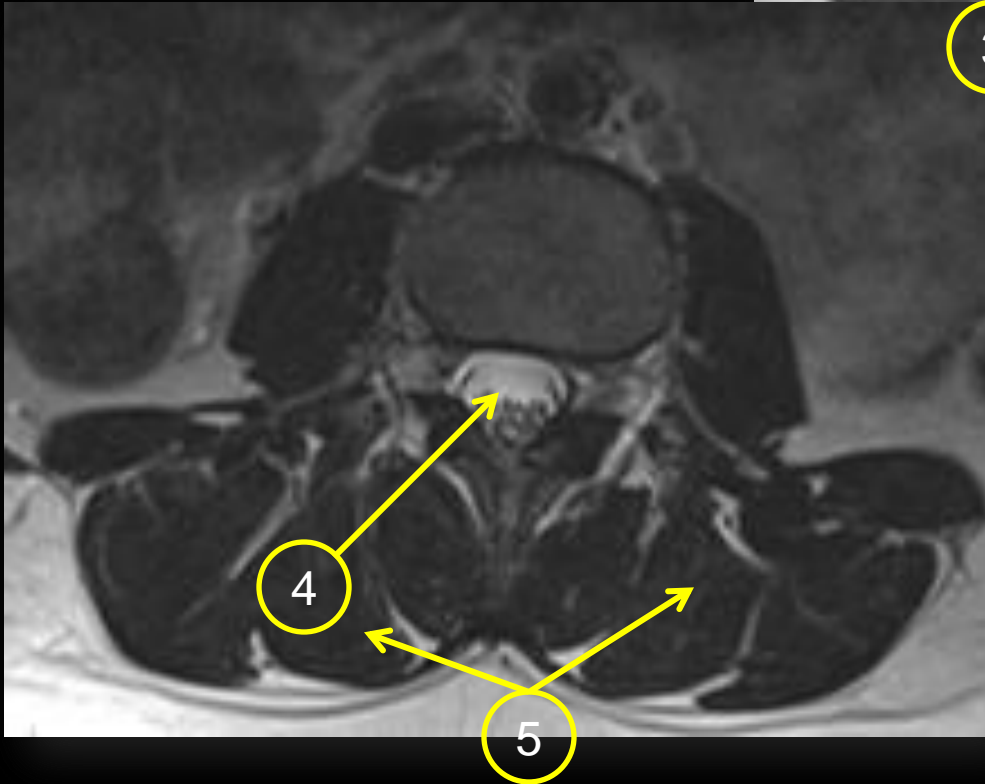
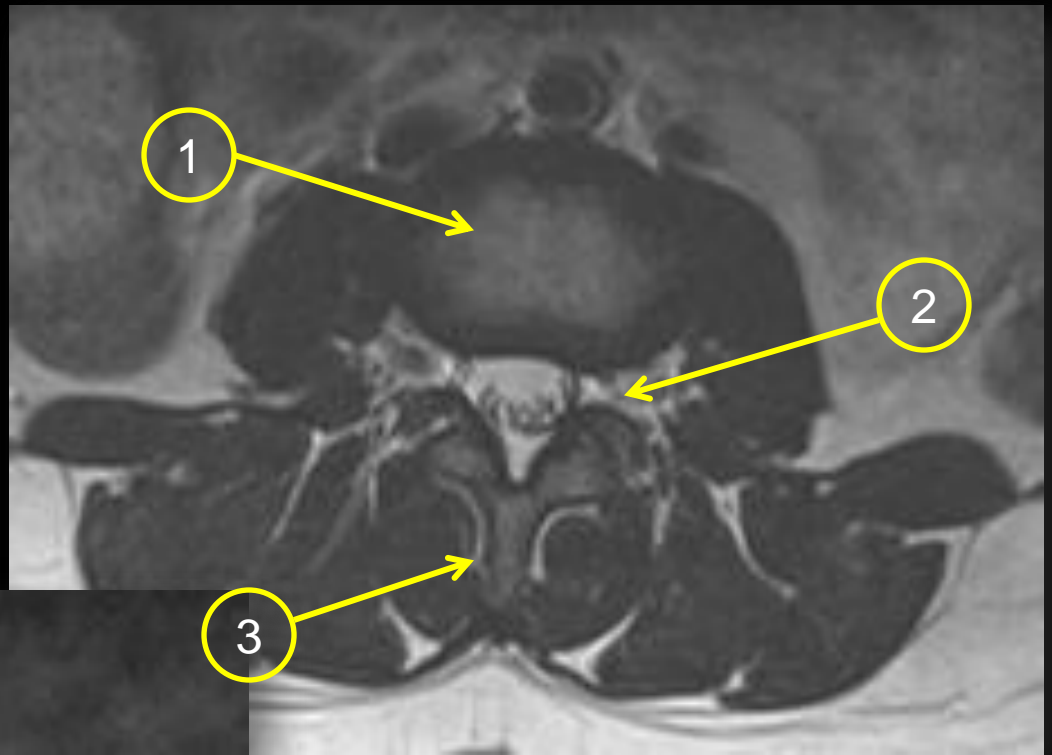
Lumbosacral spine



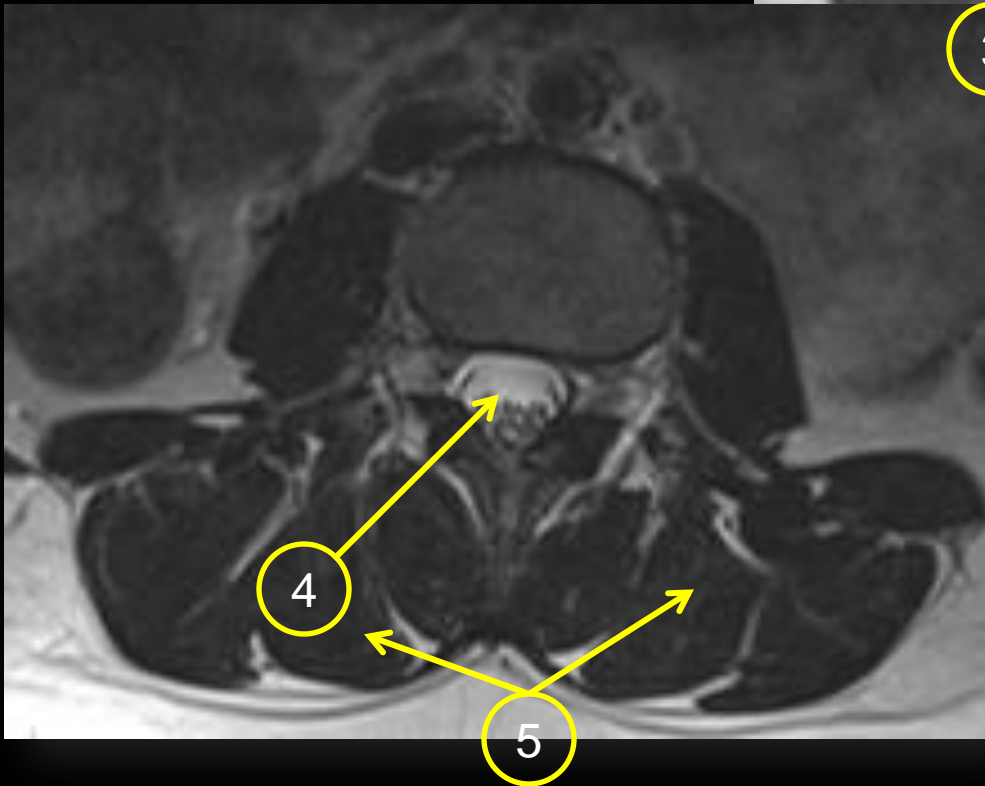
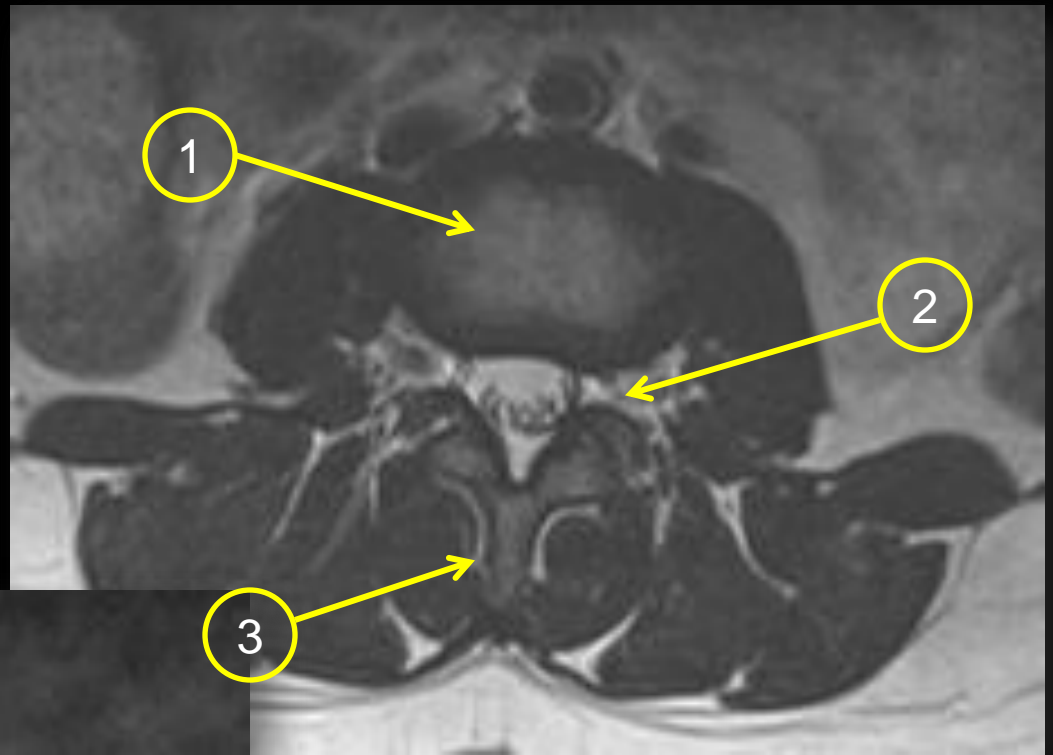
1. Vertebral body
2. Intrvertebral disc
3. Spinous process
4. Sacrum
5. Pedicle
6. Neural foramen

MRI

Lumbar spine

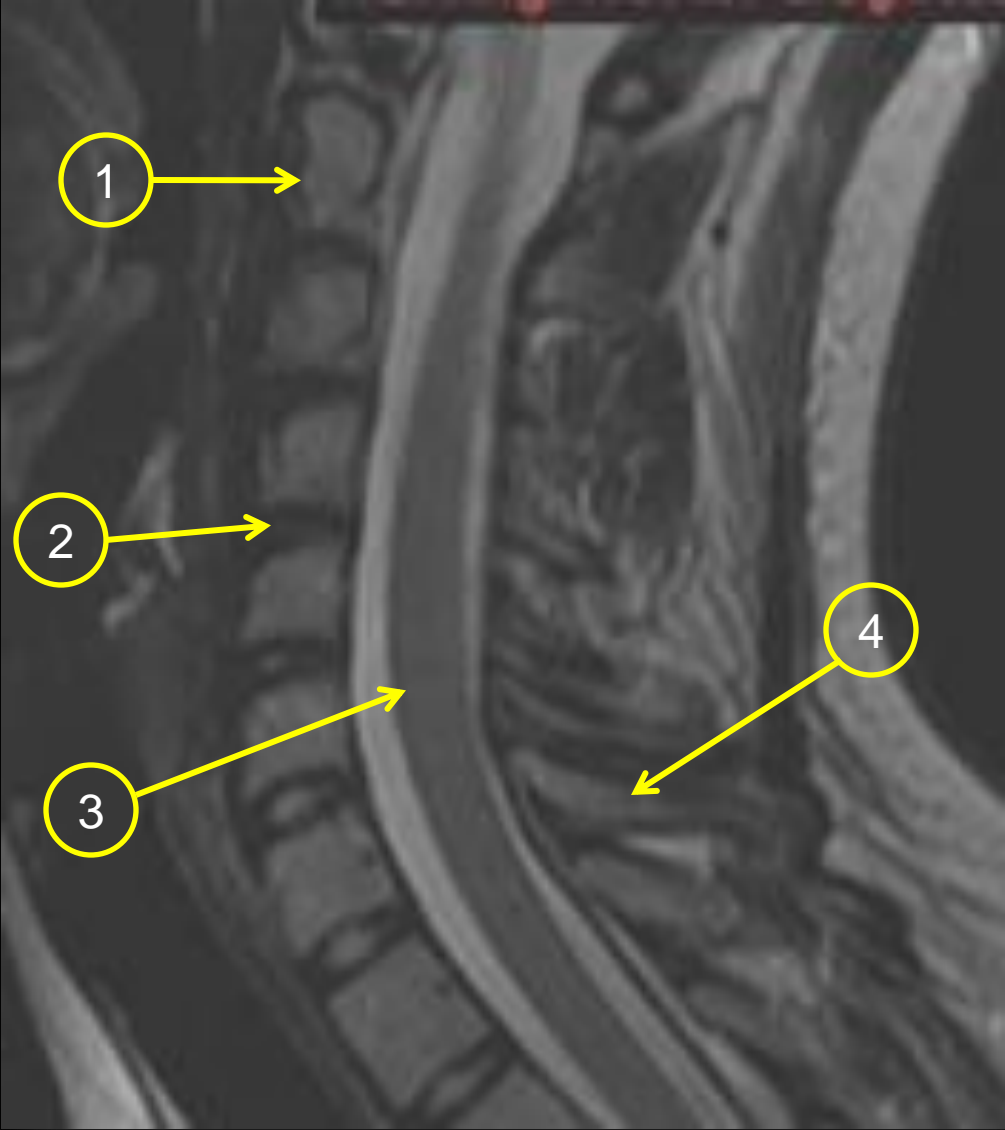


Lumbar spine



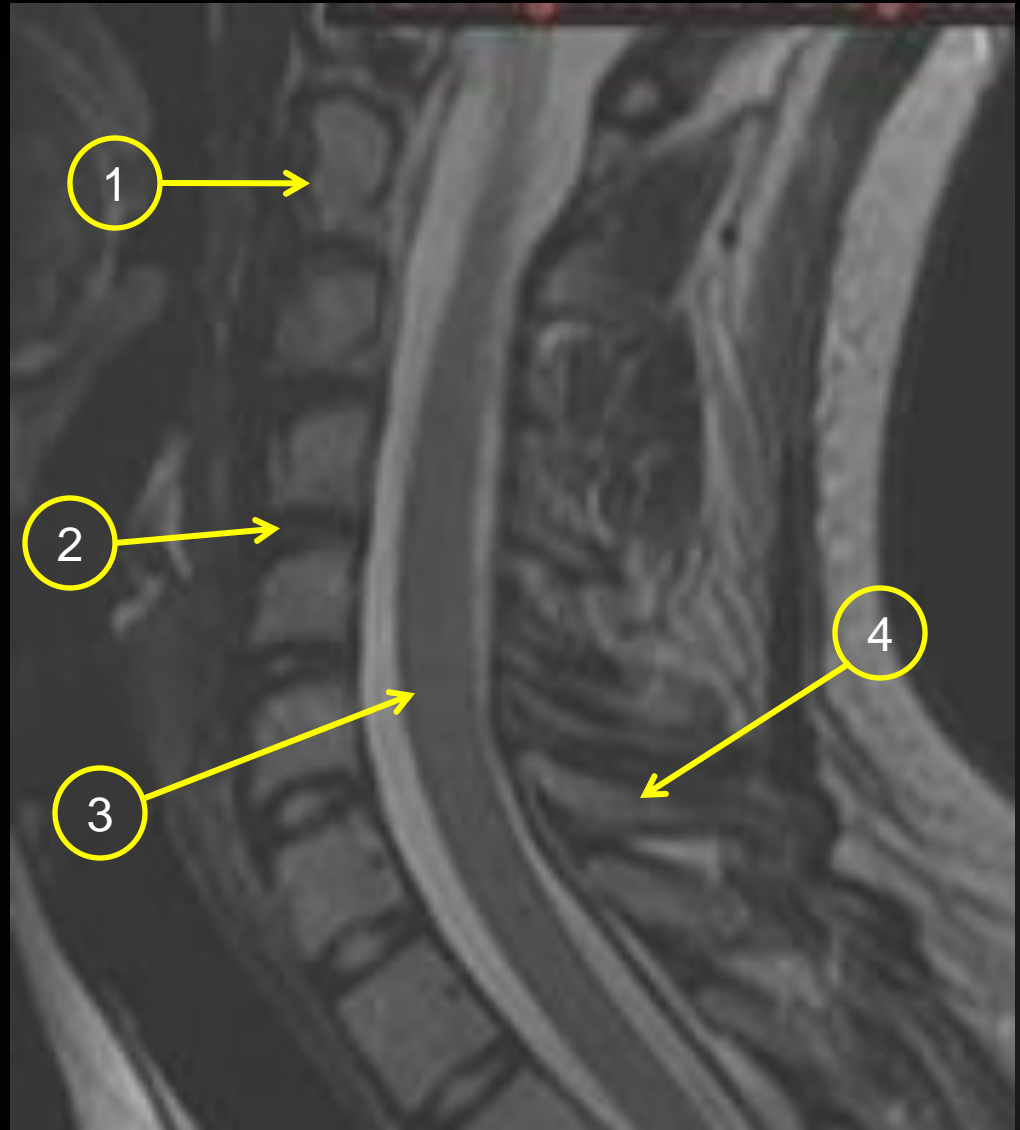
1. Vertebral body
2. Neural foramen
3. Spinous process
4. Thecal sac
5. Para-spinal muscles

Cervical spine

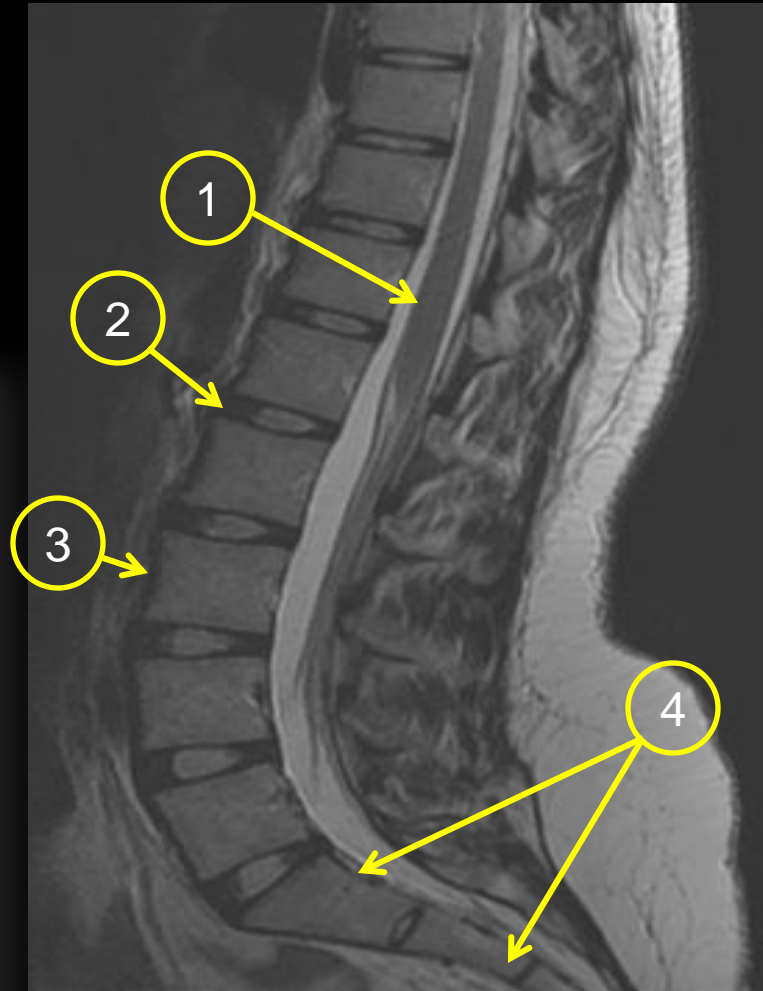
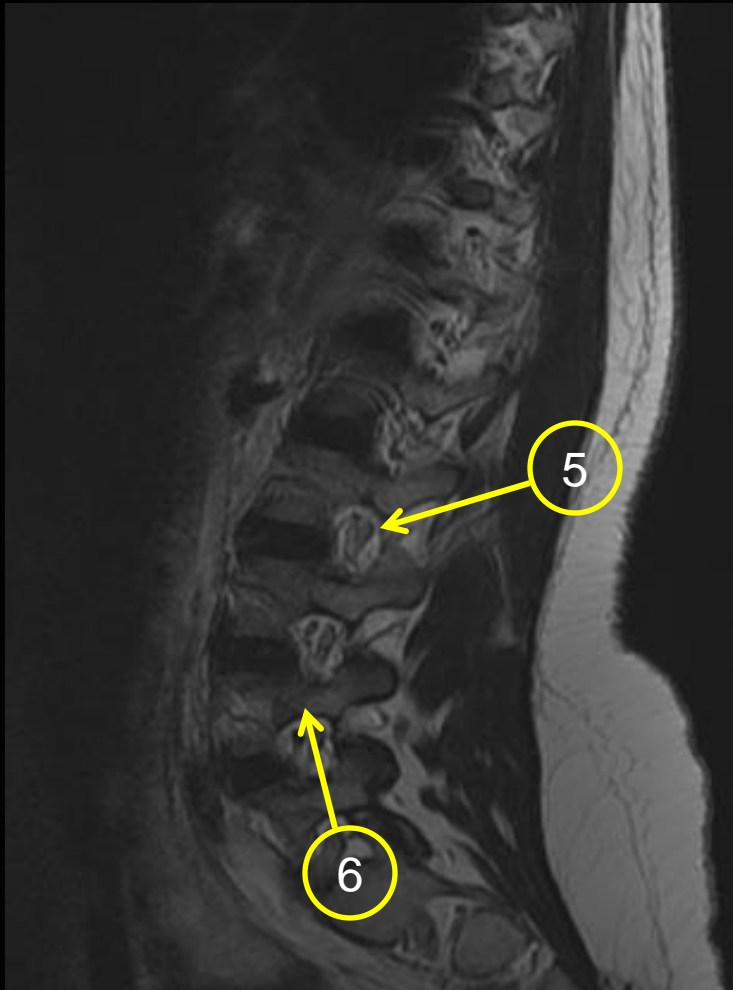


Cervical spine

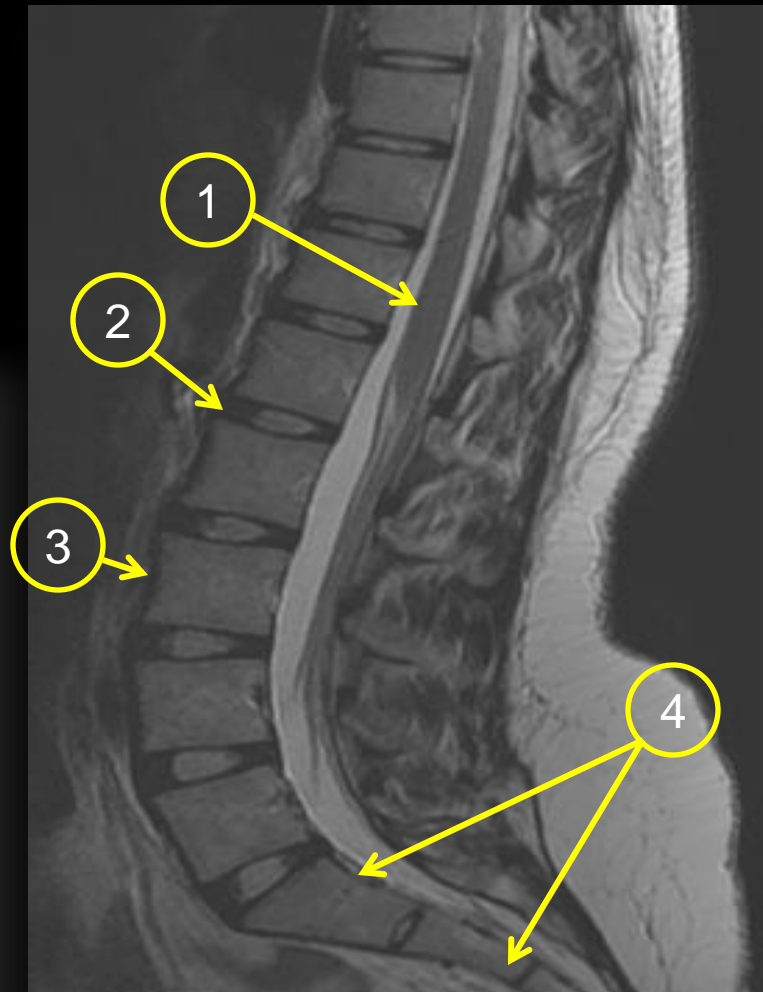
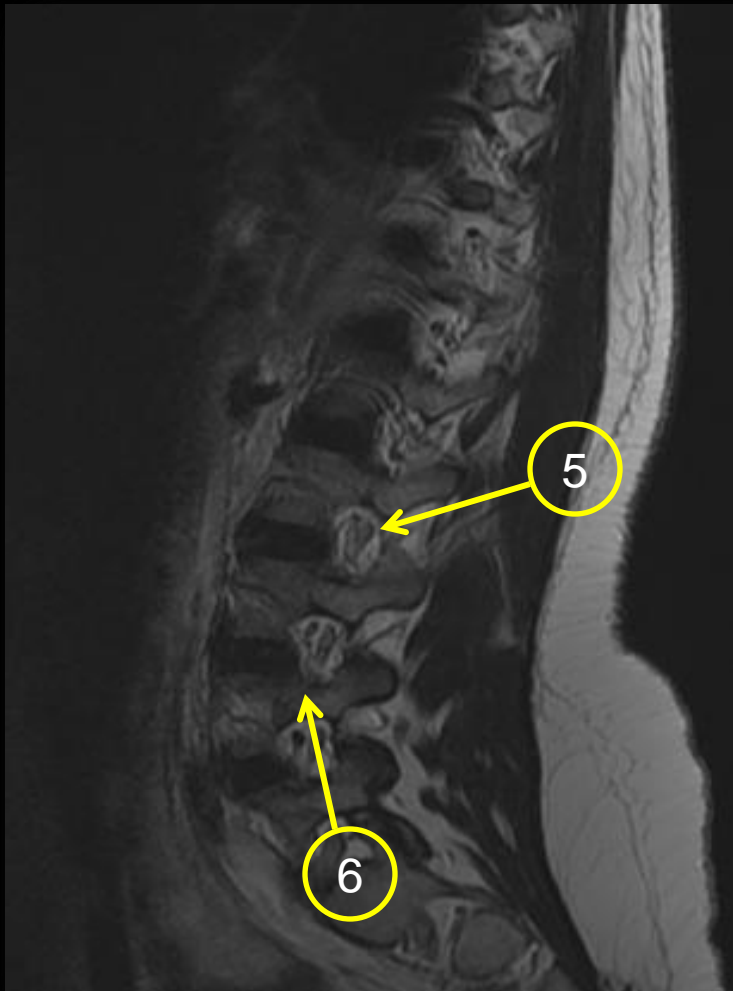
1. C2
2. Disc
3. Spinal cord
4. Spinous process



Lumbosacral spine

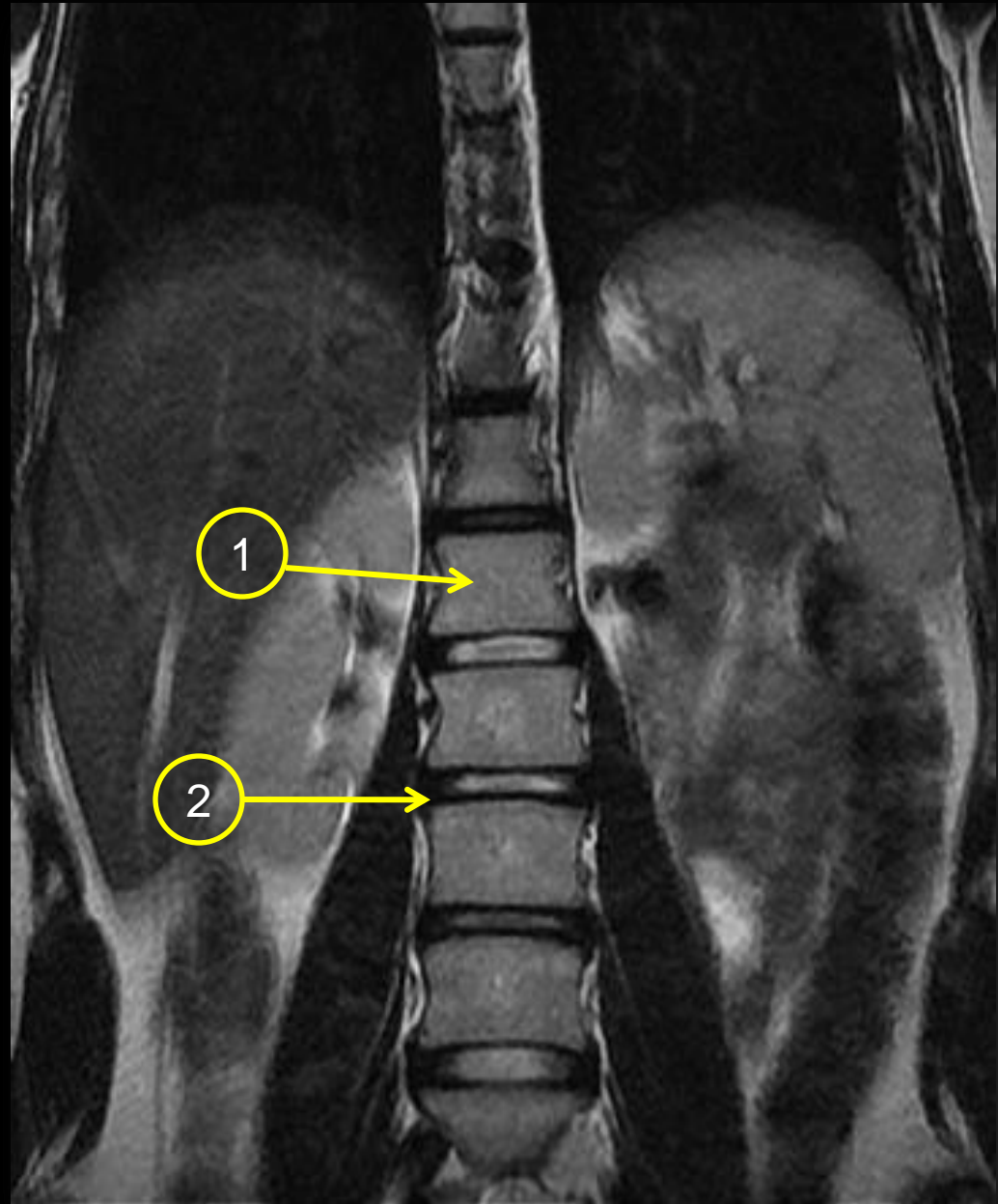


Lumbosacral spine



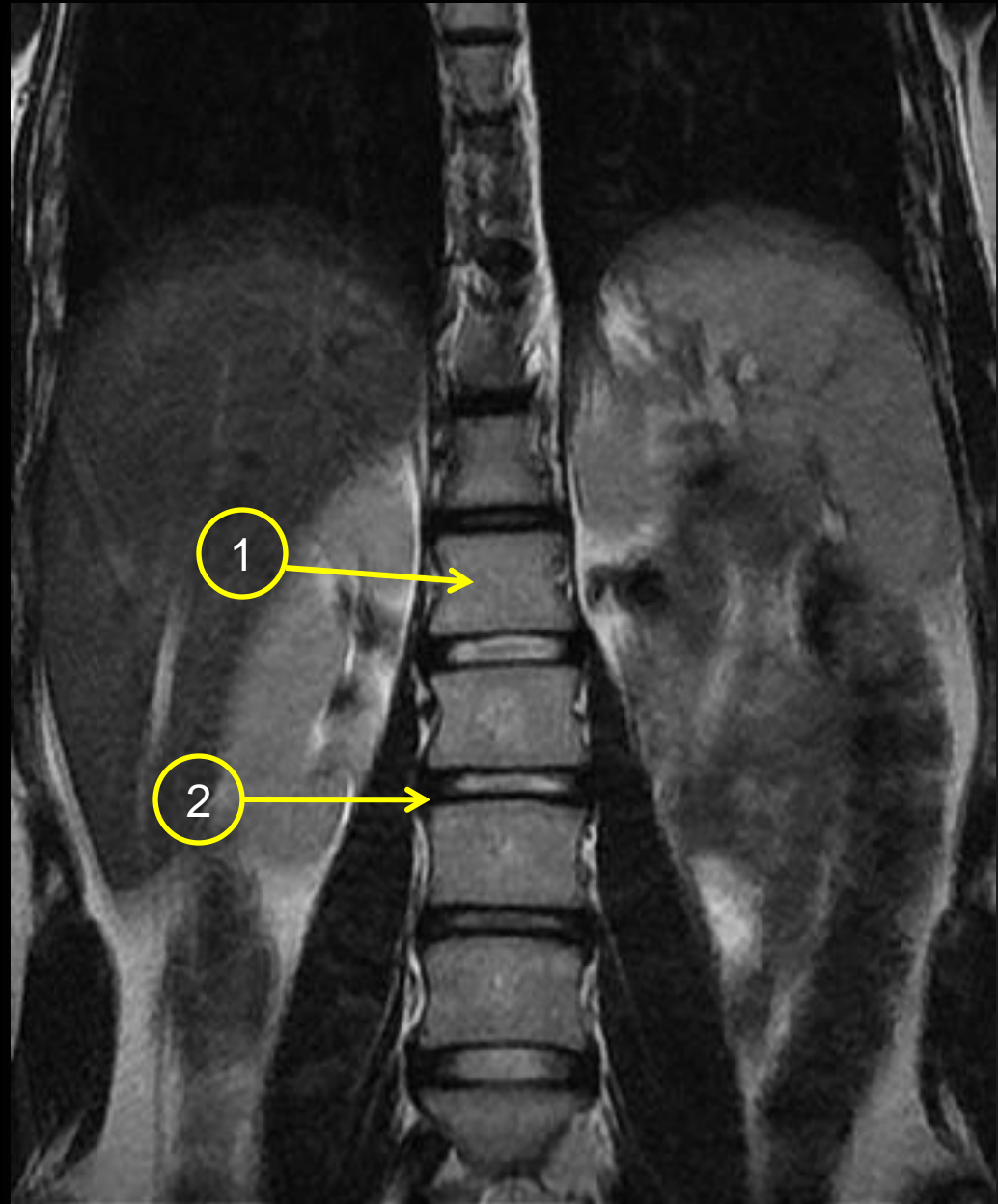
1. Spinal cord
2. Disc
3. Vertebral body
4. Sacrum
5. Neural foramen
6. Pedicle

Lumbar spine

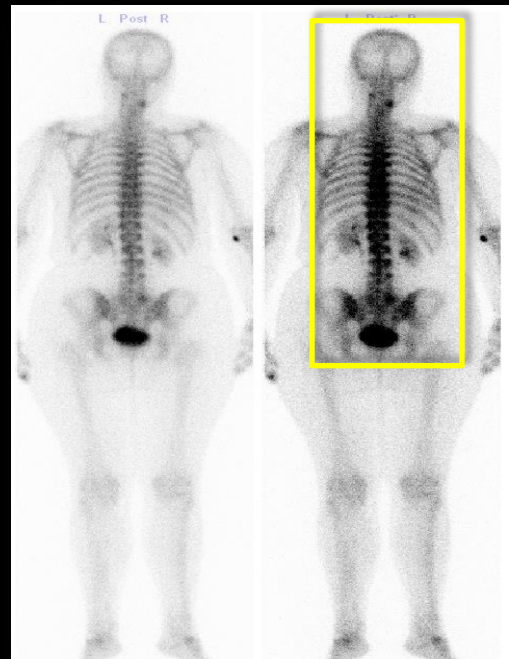
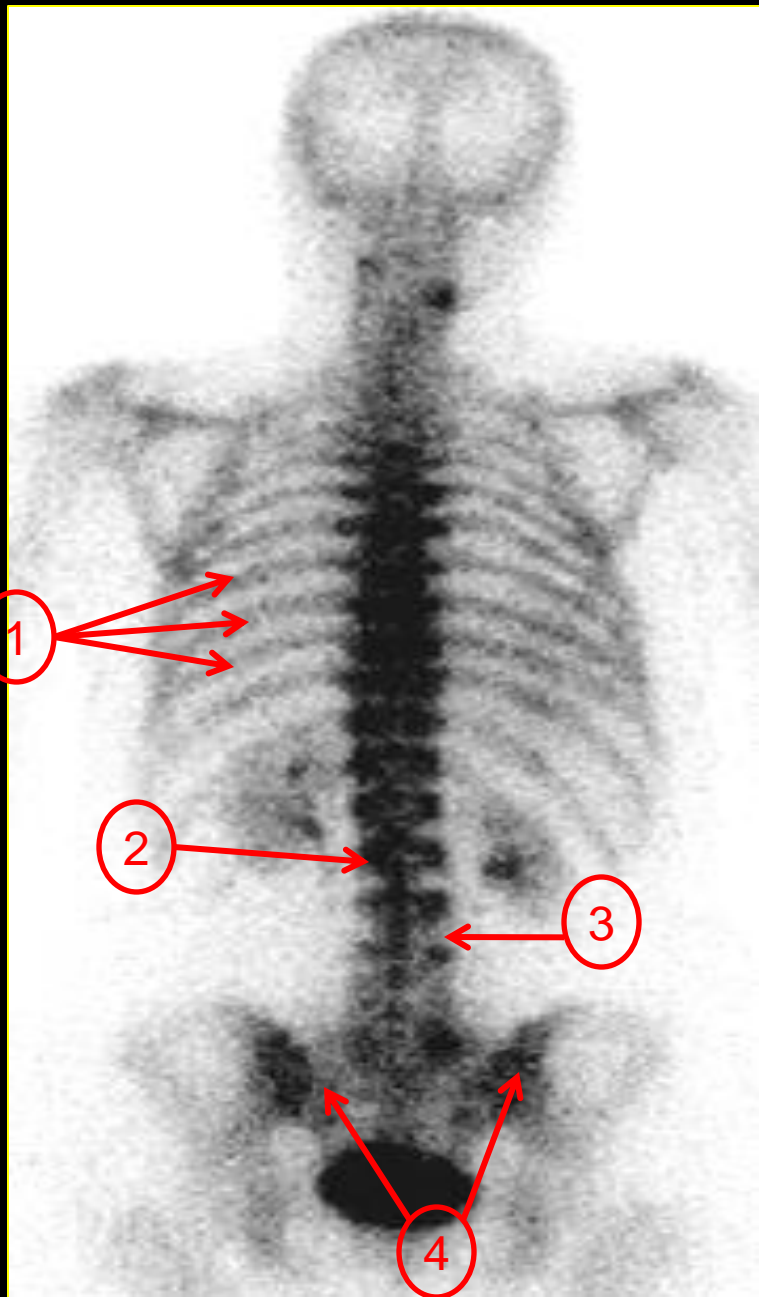


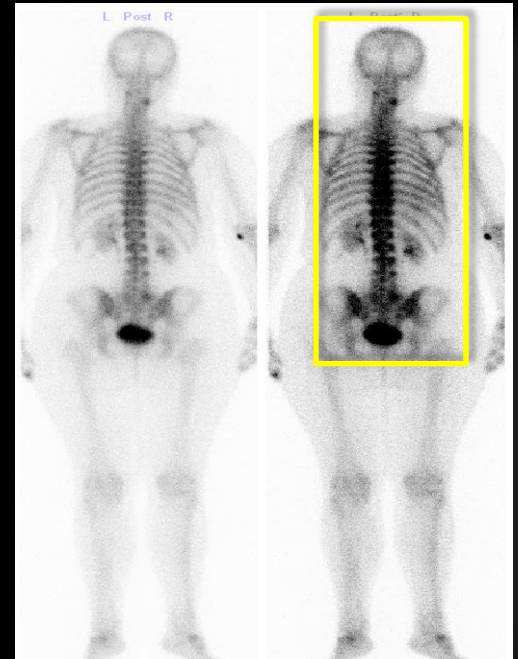
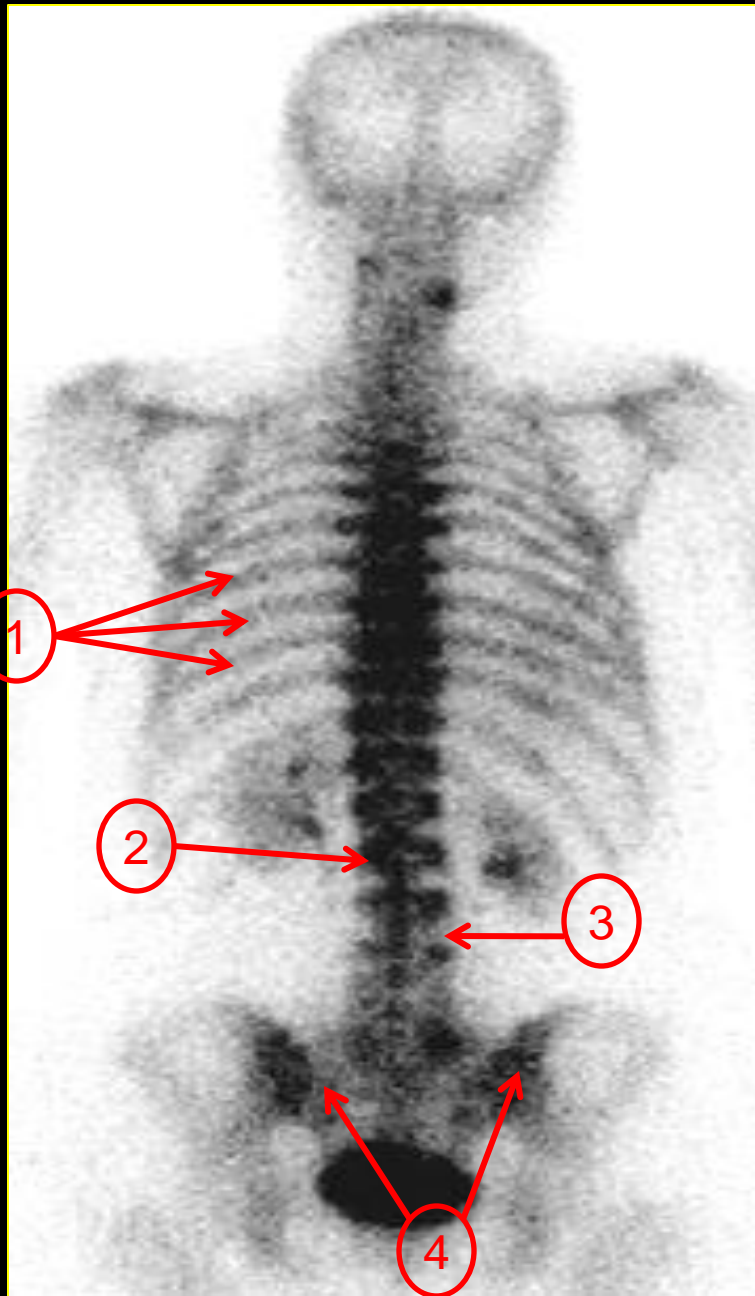
Lumbar spine

1. Vertebral body
2. disc



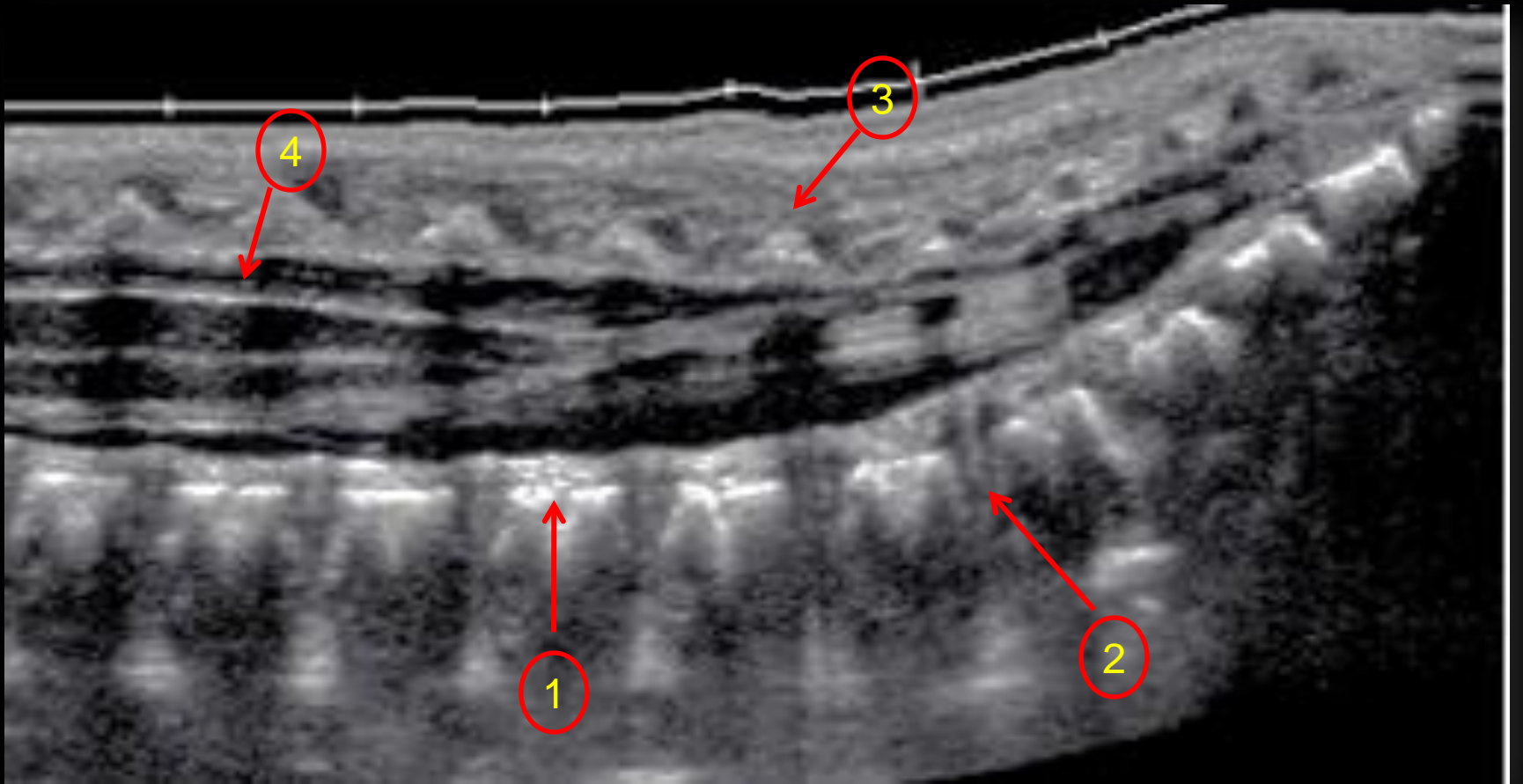
Nuclear scan

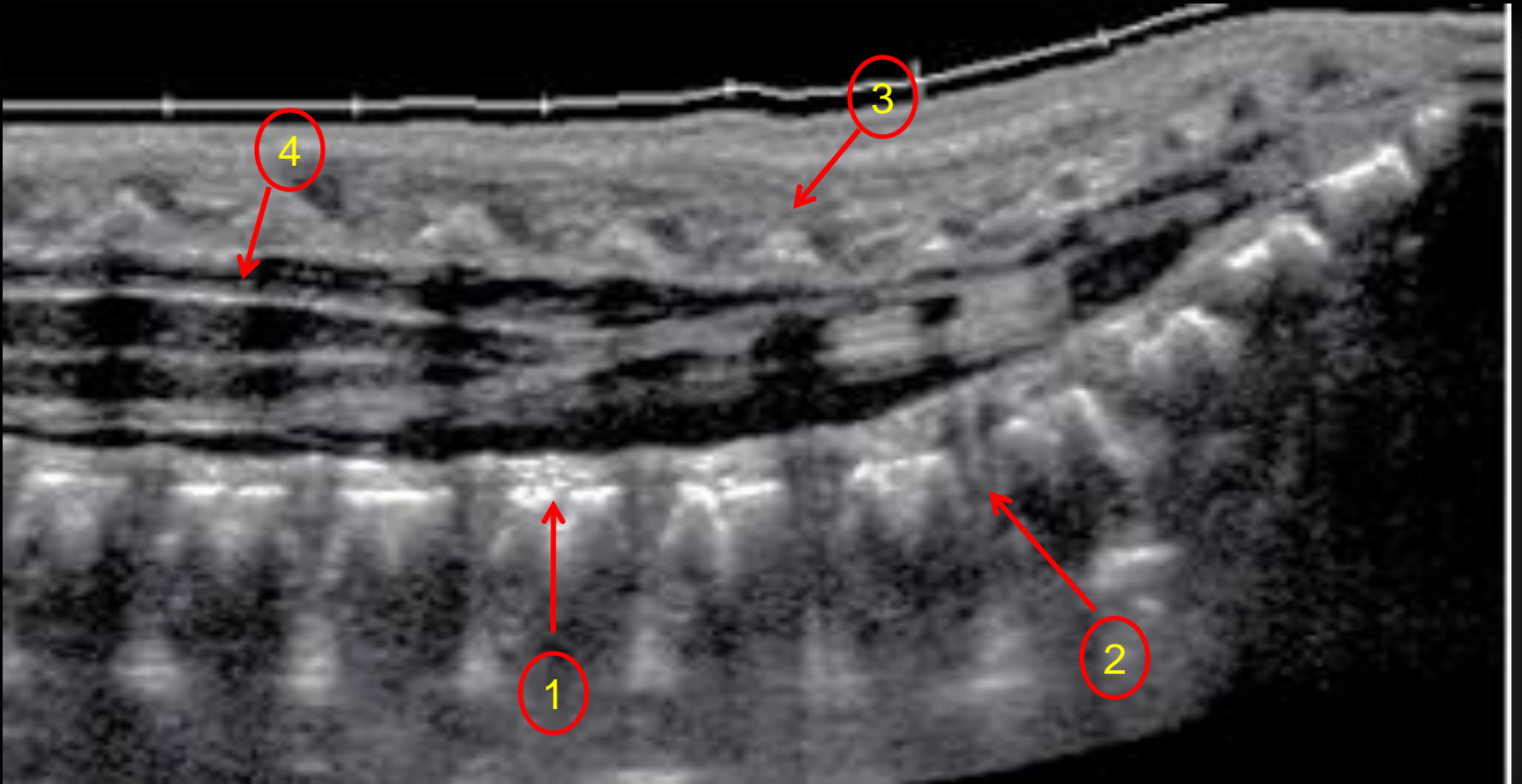




1. Ribs
2. Vertebral body
3. Disc
4. sacrum

ULTRASOUND





1. Vertebral body
2. Disc
3. Spinous process
4. Spinal cord

THE END

