

Arterial Supply of The Heart

Right Coronary Artery



They are distributed over the cardiac surface, within the subepicardium connective tissue.

They arise from the initial part of the Ascending Aorta (Aortic Sinuses), immediately above the aortic valve.

Variations of the Coronary Arteries

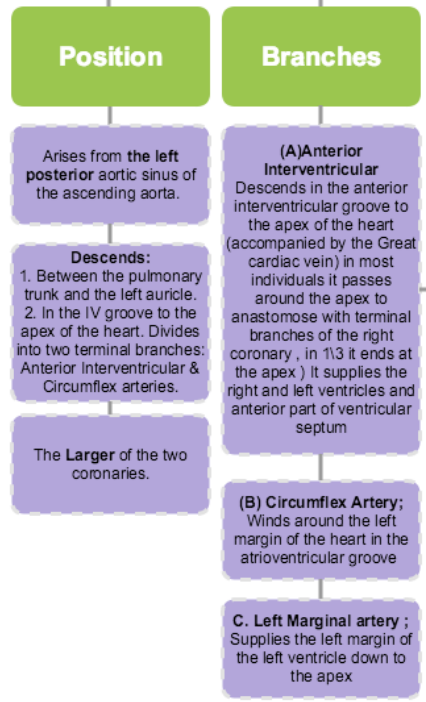
Right Dominance:
In (90%) of population, the Posterior Interventricular artery is a branch of the Right Coronary.

Left Dominance:
In the rest (10%), the Posterior Interventricular artery arises from the Circumflex branch of the Left Coronary A

Coronary Anastomosis

In MOST of people, the terminal branches of the right and left coronaries anastomose in the posterior part of the IV groove. However this anastomoses is **not large enough** to provide adequate blood supply in case of coronary occlusion, (**Functional End arteries**)

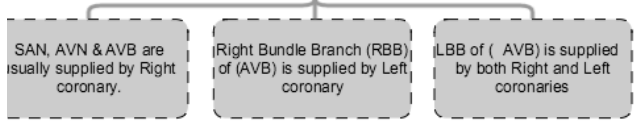
Left Coronary artery



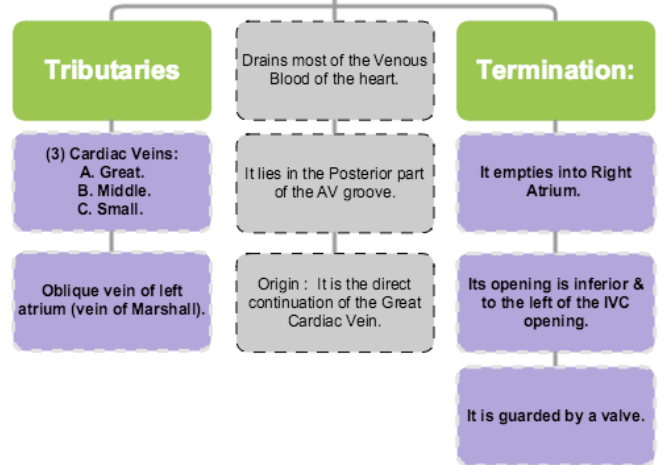
It gives:

1. Left conus artery for pulmonary conus.
2. Anterior ventricular and Posterior ventricular ; Supply left ventricle
3. Atrial branches ; Supply greater part of left atrium
4. Left diagonal artery; one of the ventricular branches or may arise from left coronary.

Arterial Supply of Conducting System



Coronary Sinus



Veins Draining outside Coronary Sinus

