

## + Motivational Corner:

Winners are not  
people who never  
fail, but people who  
never quit.



HISTOLOGY  
— 435 —



# Practical exam revision

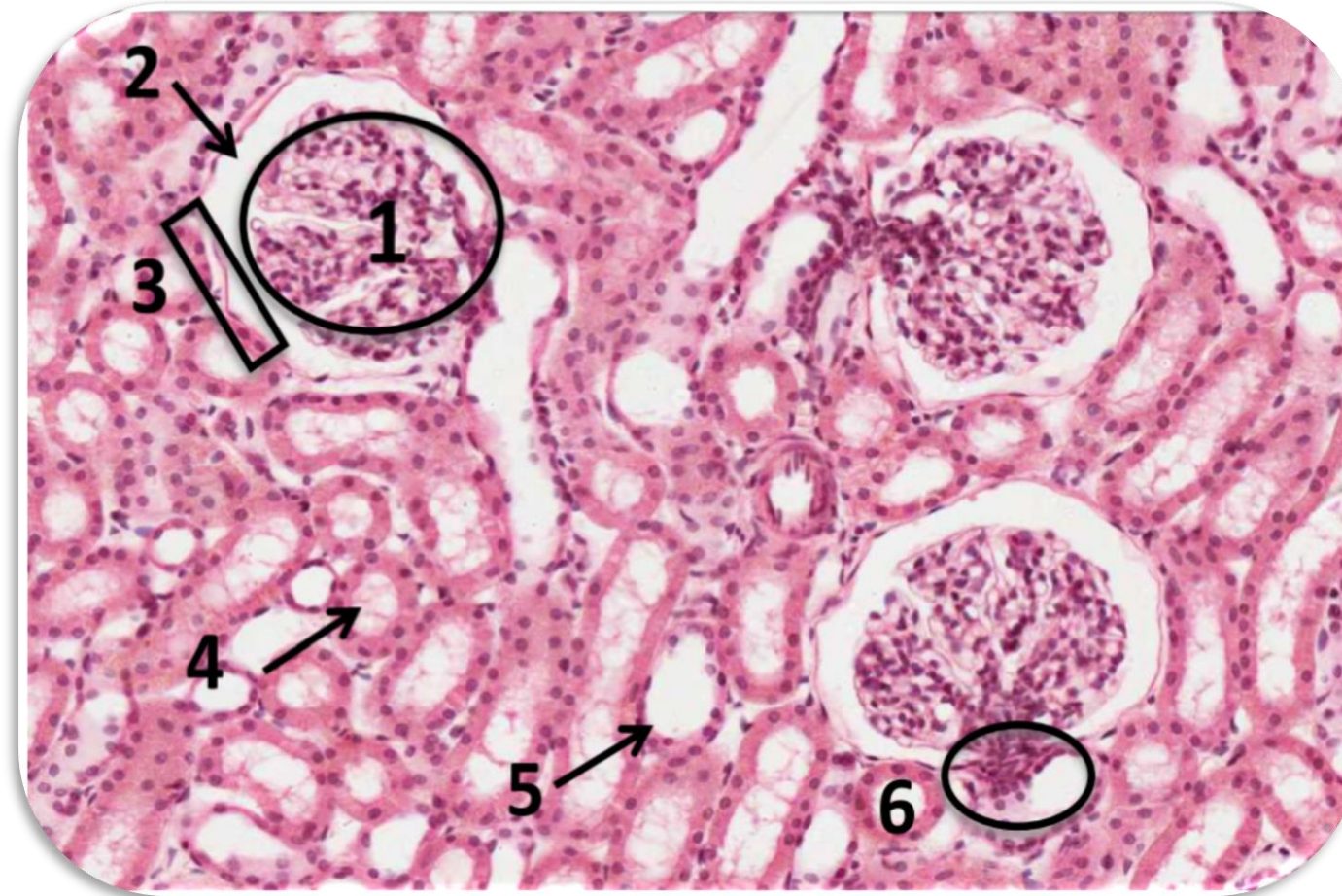
# + Cortex of the Kidney

Important Slide



## ■ Structures :

1. Glomerulus of renal corpuscle.
2. Urinary space.
3. Parietal layer of Bowman's capsule.
4. Proximal convoluted tubules with brush border.
5. Distal convoluted tubules.
6. Juxta- glomerular apparatus.



# + Renal Corpuscle

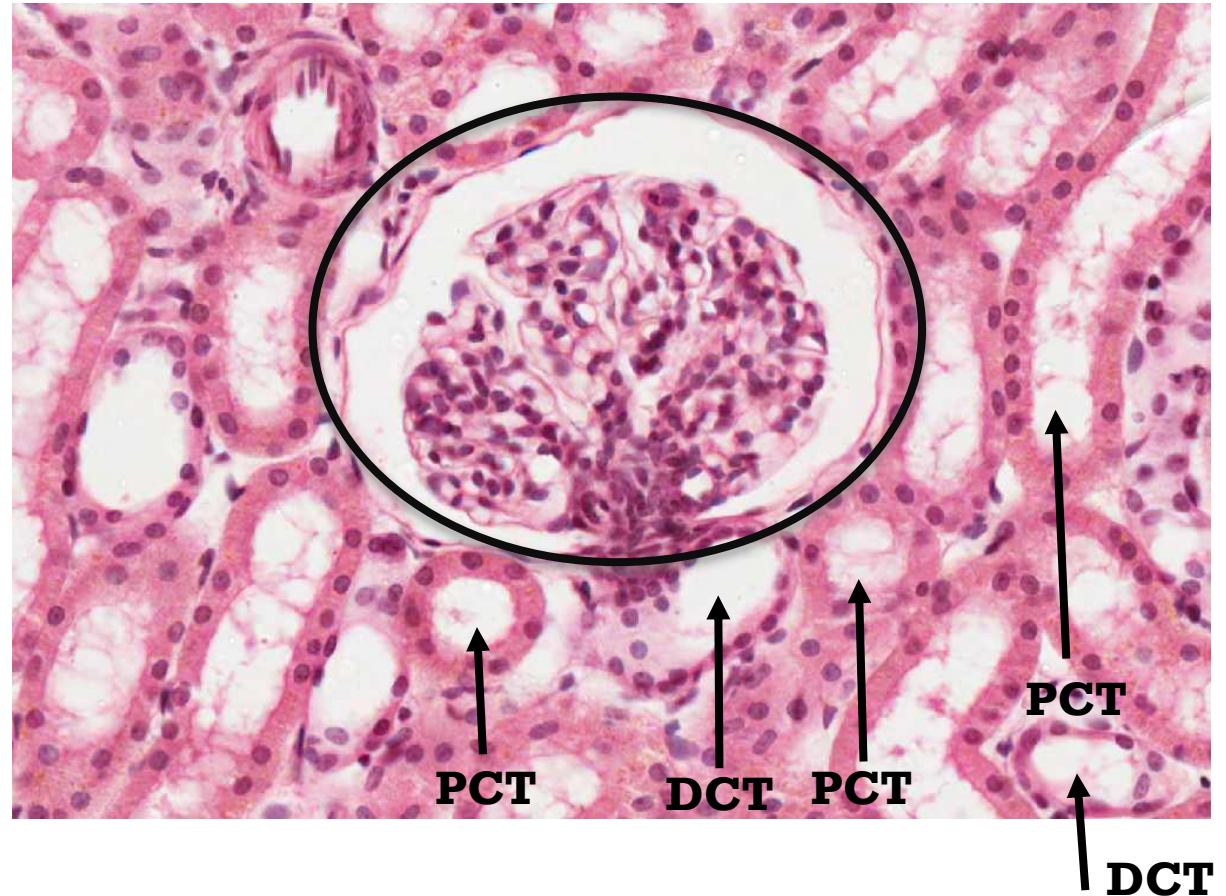
## ■ Structures :

1. Glomerulus (fenestrated capillaries "without diaphragm")
2. Bowman's capsule (Parietal layer) and Podocytes
3. Mesangial cells: Intra-glomerular cells

## ■ Cells :

- Mesangial cells
- Glomerular endothelial cells
- Podocytes

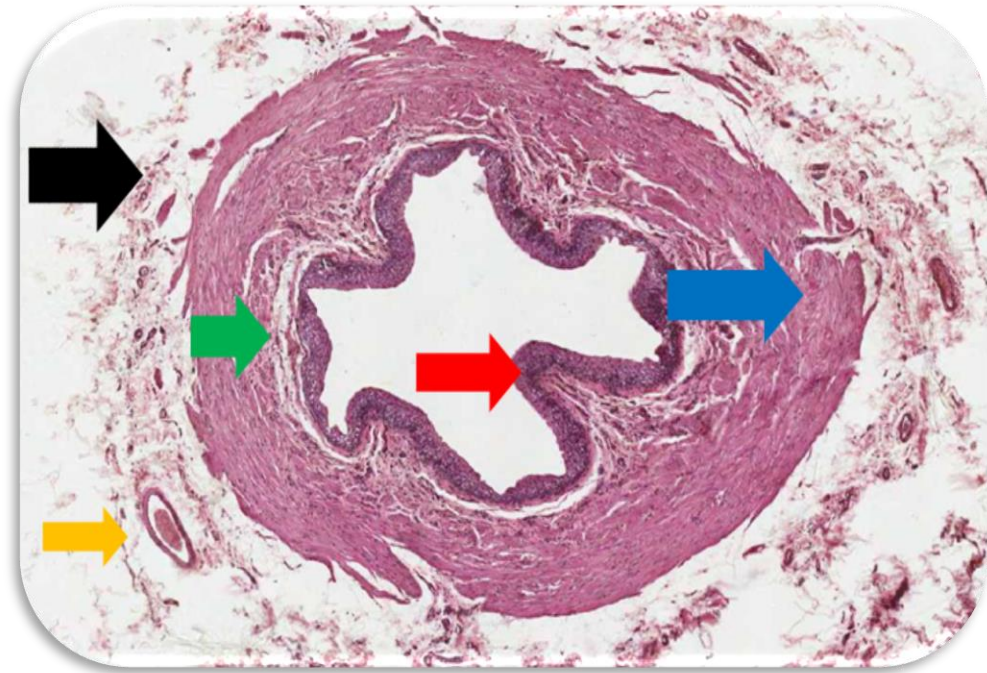
The cells are the most important thing in this slide



# + Ureter

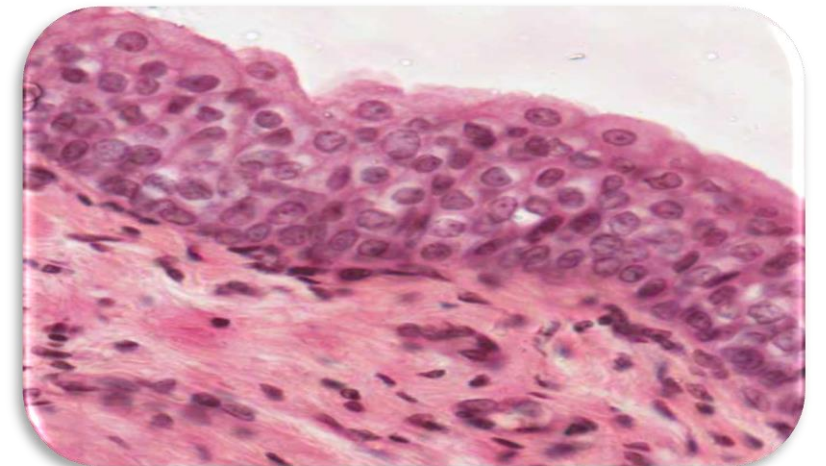
Important Slide  
Specially the table

- Transitional epithelium
- Inner longitudinal layer
- Outer circular
- Blood vessels
- Adventitia



It contains 3 layers  
And it is organized as the following:

Mucosa	Muscularis	Adventitia
<ul style="list-style-type: none"><li>• Transitional Epithelium</li><li>• Lamina Propria</li></ul>	<p>Muscularis "Muscle coat"</p> <ul style="list-style-type: none"><li>• Upper 2/3:<ul style="list-style-type: none"><li>- Inner Longitudinal</li><li>- Outer Circular</li></ul></li><li>• Lower 1/3:<ul style="list-style-type: none"><li>- Inner Longitudinal</li><li>- Middle Circular</li><li>- Outer Longitudinal</li></ul></li></ul>	No Serosa



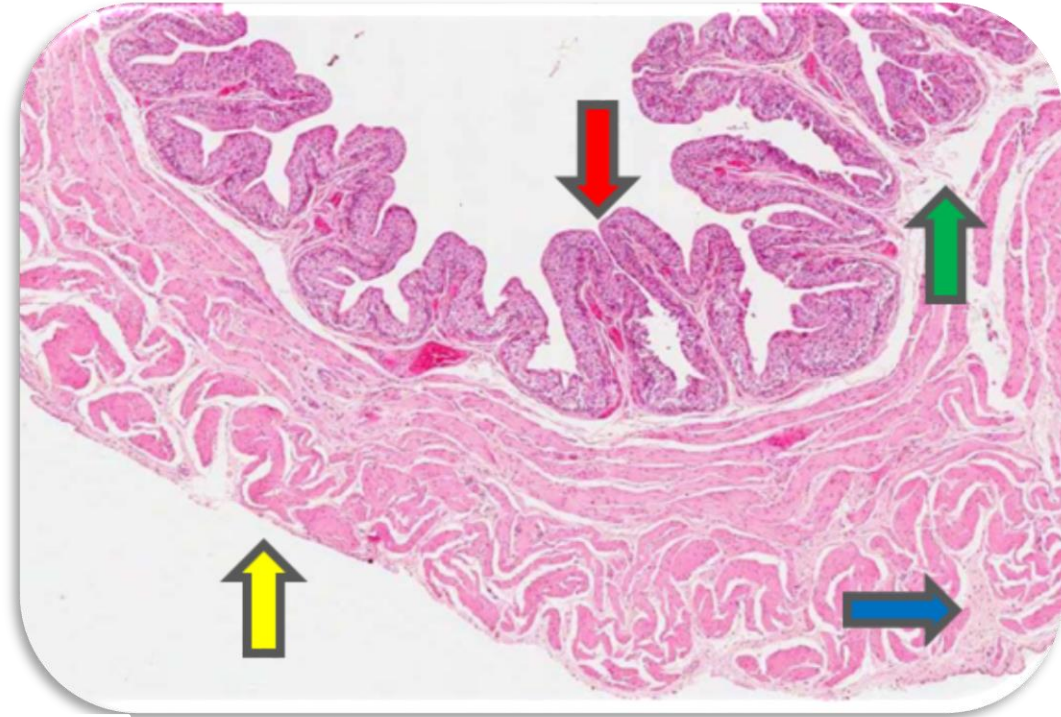
# + Urinary Bladder

Transitional epithelium

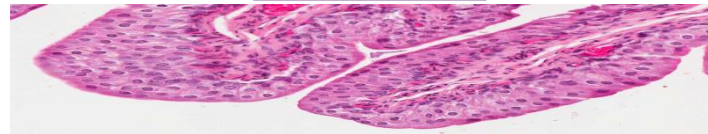
Lamina propria

Connective tissue

Mesothelium



Layers

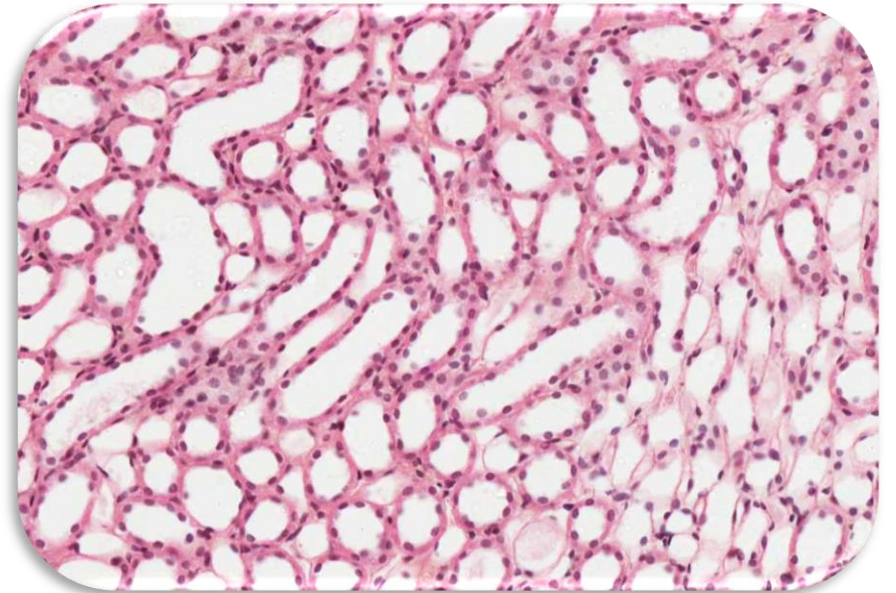
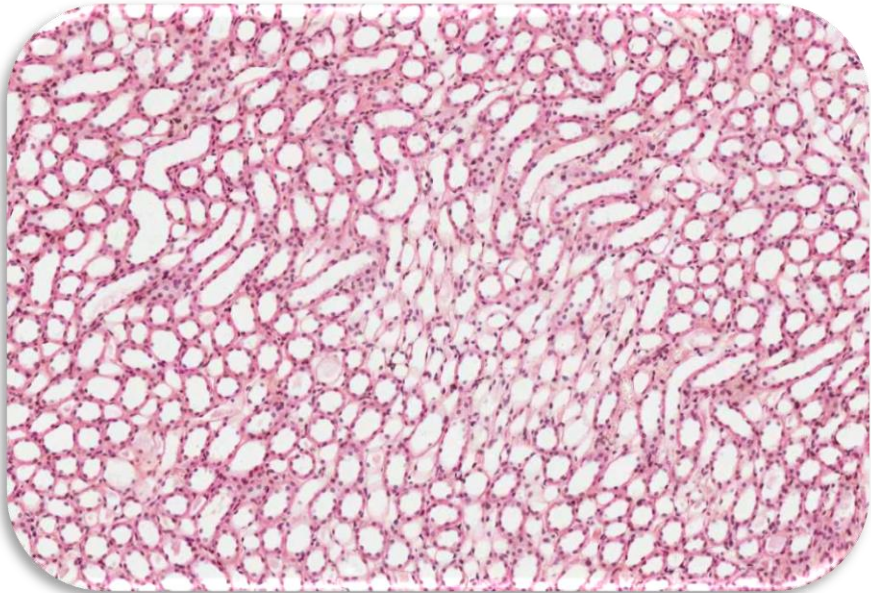


Mucosa	Muscularis	Adventitia
<ul style="list-style-type: none"><li>• Transitional Epithelium</li><li>• Lamina Propria</li></ul>	<p>3 layers of smooth muscle coat"</p> <ul style="list-style-type: none"><li>• Inner Longitudinal</li><li>• Middle Circular</li><li>• Outer Longitudinal</li></ul>	<p><b>Serosa</b></p>

# + Kidney (Medulla)

## ■ Features:

- Tubular structure
- Contain: loop of Henle and collecting tubules and ducts.



# + Credit

## DONE BY :

- Adnan Alkhalidi
- Mohammed Amarshoud
- Khalid Alghsoon
- Anas AliAbdullah Alshathry

## EDITED BY :

- Abdulkarim Alharbi
- Areeb ALOgaiel

For any Questions don't hesitate to contact  
us at:

[histology435@gmail.com](mailto:histology435@gmail.com)

## TEAM LEADERS:

- Hazim Bajri
- Areeb ALOgaiel

Thanks for checking our work,  
Good luck.

-Team histology.

-Big thanks to  
Histology434



HISTOLOGY  
— 435 —

