

ABDOMEN

GENERAL ARRANGEMENT

Prof. Ahmed Fathalla Ibrahim El Fouhil

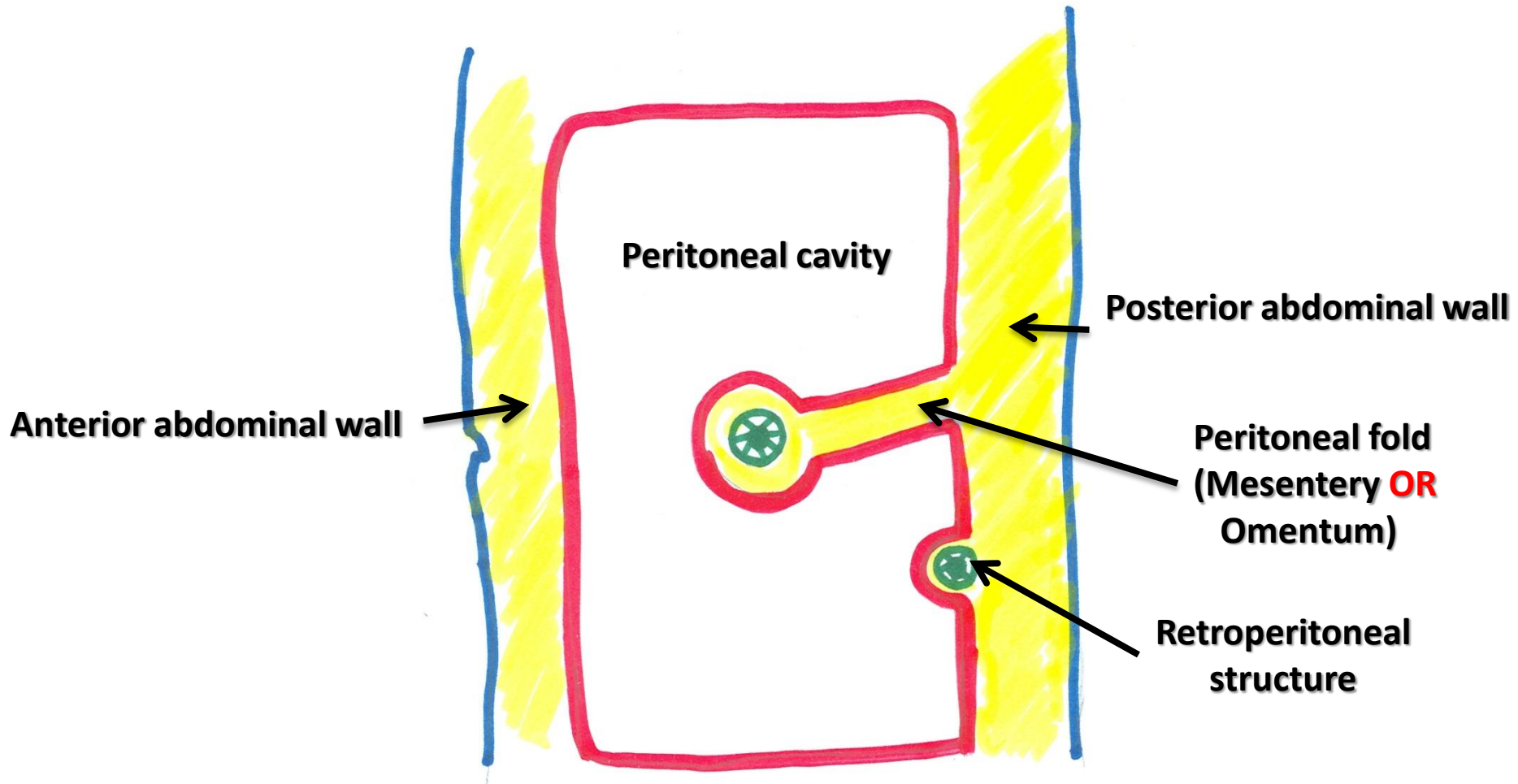
Professor of Anatomy

College of Medicine

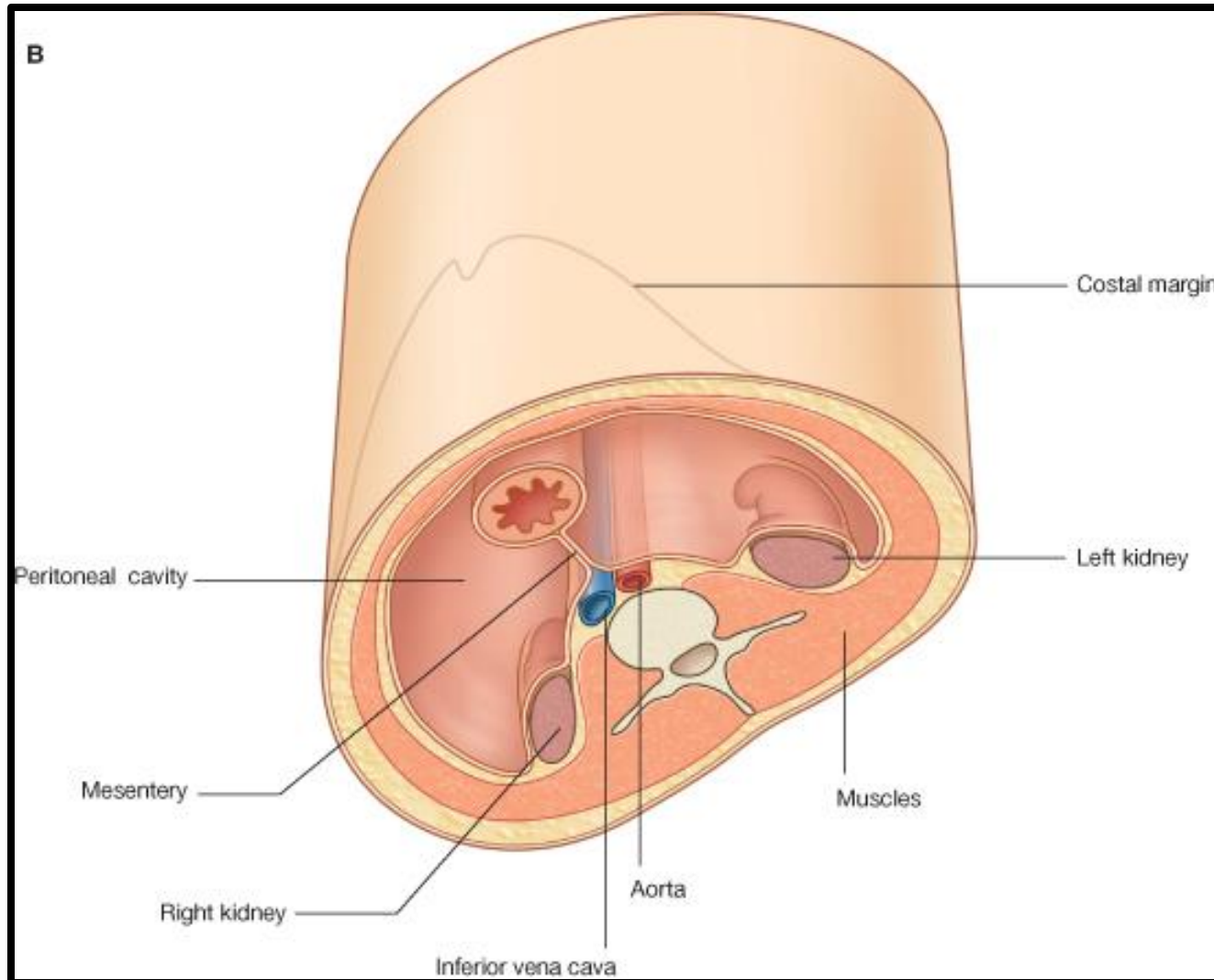
King Saud University

E-mail: ahmedfathala@gmail.com

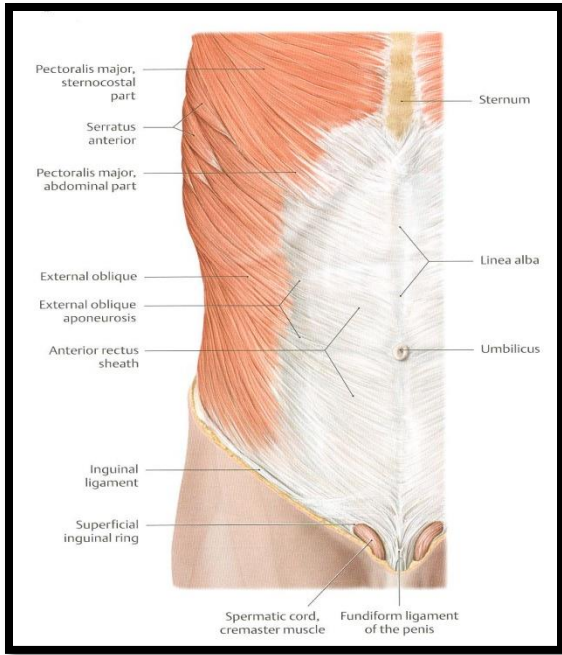
ABDOMEN



ABDOMEN

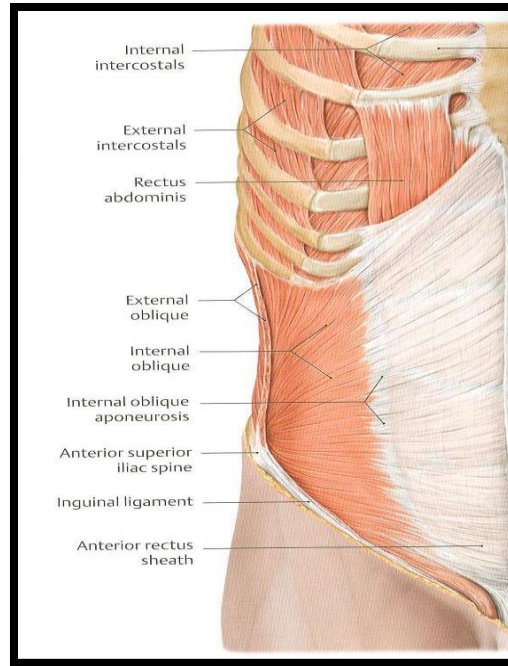


EXTERNAL OBLIQUE



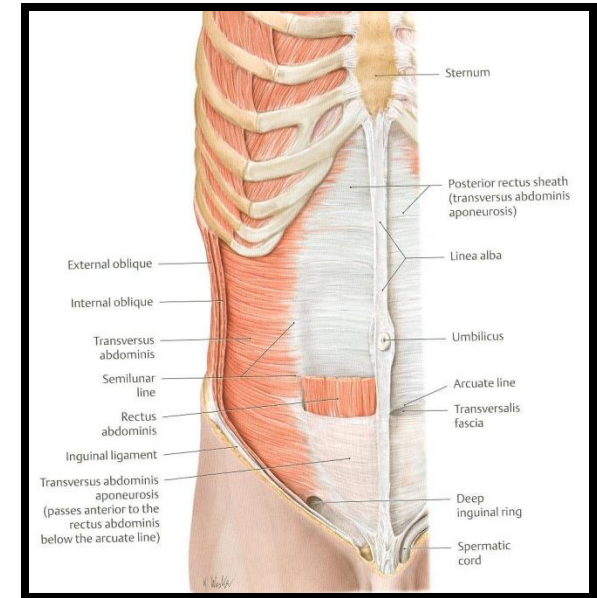
OUTER LAYER

INTERNAL OBLIQUE



MIDDLE LAYER

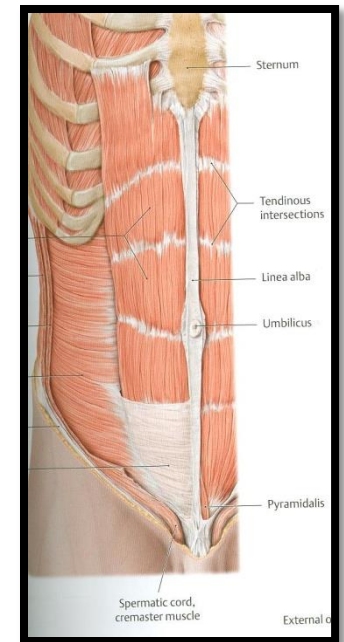
TRANSVERSUS ABDOMINIS



INNER LAYER

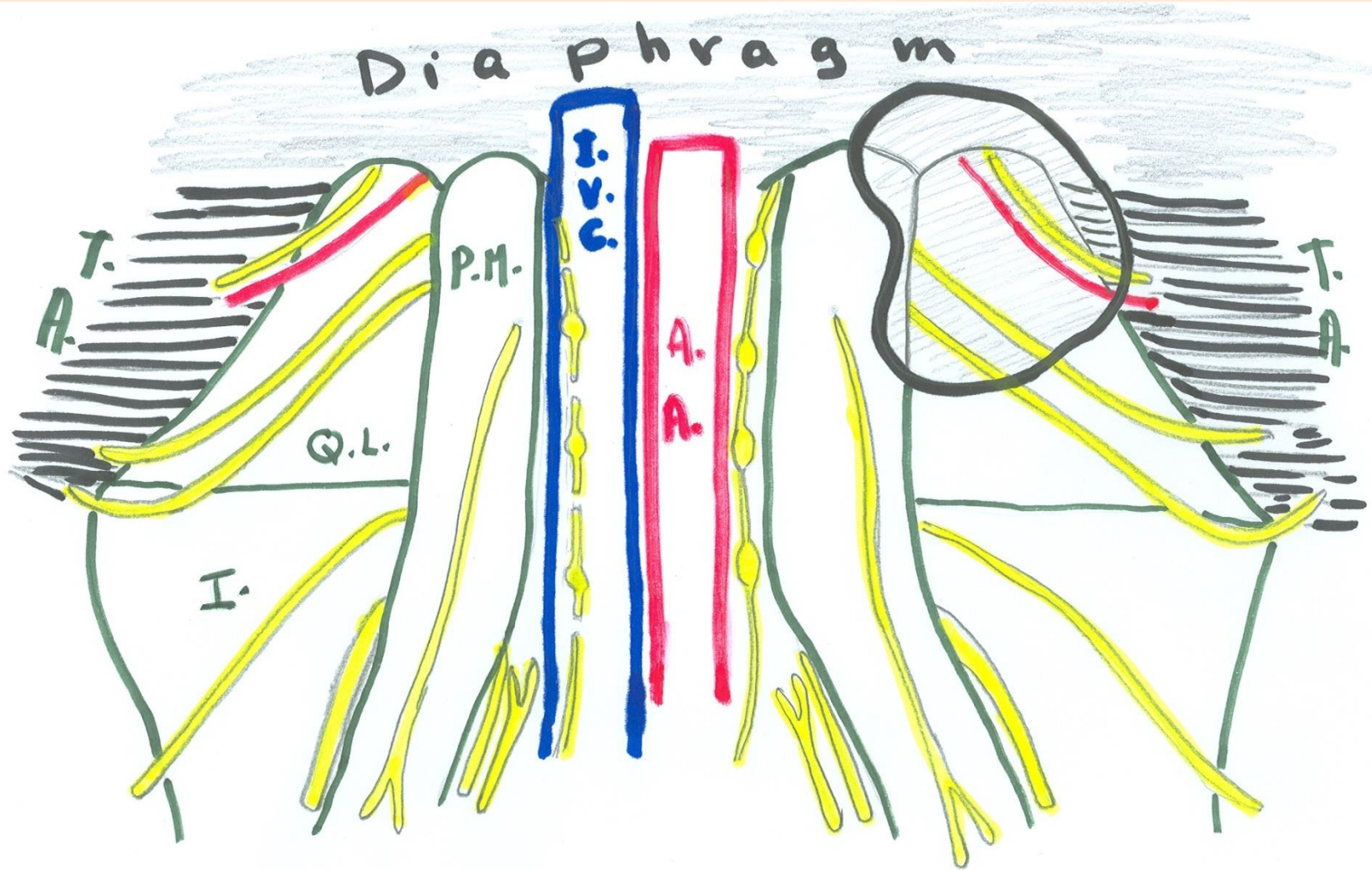
MUSCLES OF ANTERIOR ABDOMINAL WALL

RECTUS ABDOMINIS



MUSCLE ENCLOSED IN A SHEATH FORMED BY APONEUROSES OF THE 3 MUSCLES

POSTERIOR ABDOMINAL WALL



P.M.=Psoas major; Q.L.= Quadratus lumborum; I.=Iliacus; T.A.=Transversus abdominis

IMPORTANT CONTENTS OF ABDOMEN

□GIT:

- A part of esophagus
- Stomach
- Small intestine: duodenum, jejunum, ileum
- A part of large intestine: caecum, appendix, ascending colon, transverse colon, descending colon
- Liver, gall bladder & biliary ducts
- Pancreas

IMPORTANT CONTENTS OF ABDOMEN

☐ OTHER ORGANS:

- Spleen
- Kidneys, ureters & suprarenal glands

☐ VESSELS:

- Vessels of GIT: celiac trunk, superior mesenteric vessels, inferior mesenteric vessels & portal vein
- Large vessels: abdominal aorta & inferior vena cava

☐ NERVES:

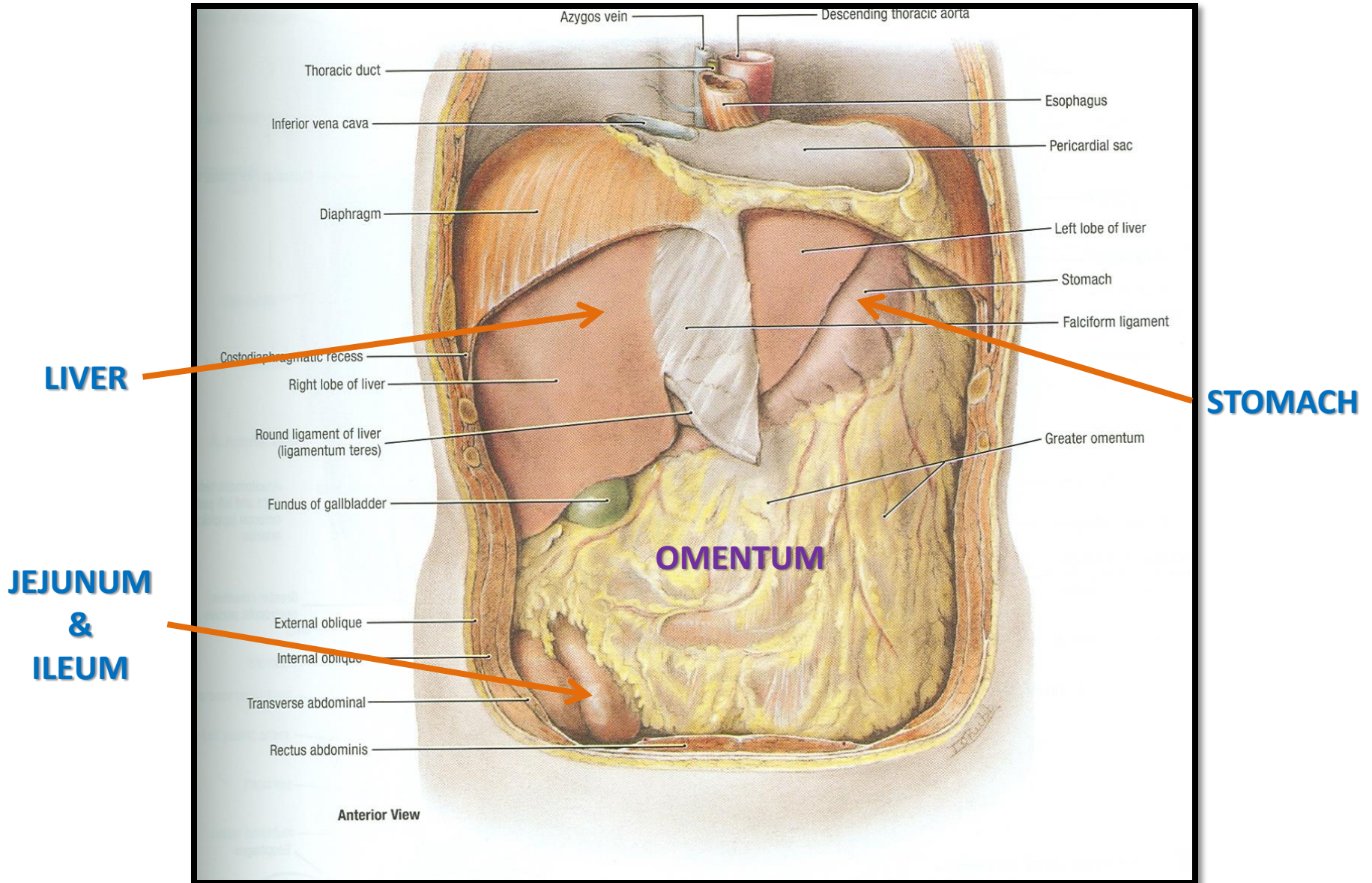
- Somatic nerves: branches of lumbar plexus
- Autonomic nerves: sympathetic trunks, parasympathetic (from vagus & pelvic splanchnic nerves).

☐ LYMPHATICS

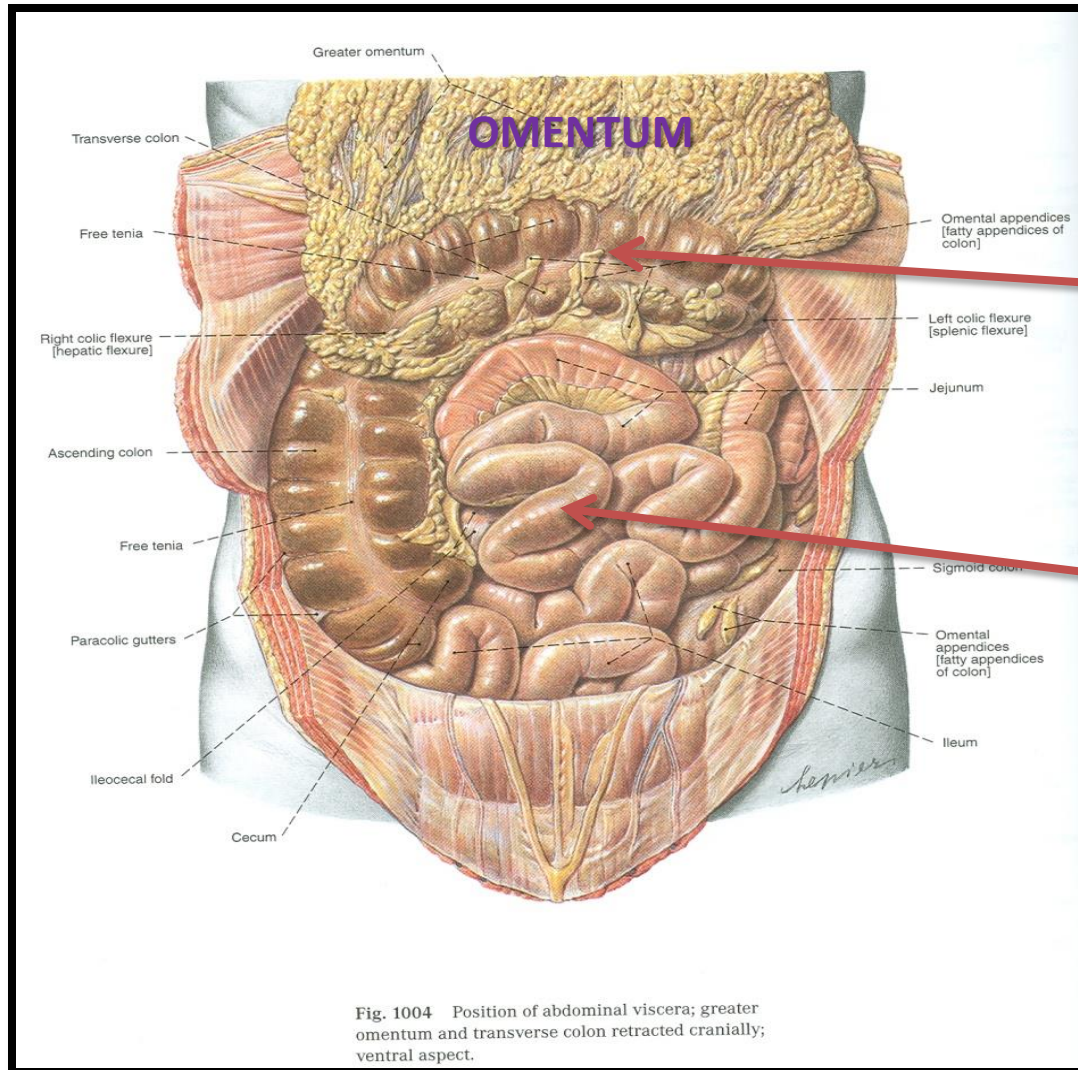
ARRANGEMENT OF ABDOMINAL CONTENTS

- ❑ **LAYER ONE:** PART OF GIT INVAGINATING THE PERITONEAL CAVITY (COMPLETELY SURROUNDED BY PERITONEAL CAVITY): *LIVER, STOMACH, TRANSVERSE COLON, JEJUNUM & ILEUM*
- ❑ **LAYER TWO:** *REST OF GIT* (PARTIALLY SURROUNDED BY PERITONEUM: FRONT & SIDES) + *SPLEEN*
- ❑ **LAYER THREE:** *REST OF CONTENTS OF ABDOMEN* (RETROPERITONEAL STRUCTURES)

ABDOMEN - LAYER 1



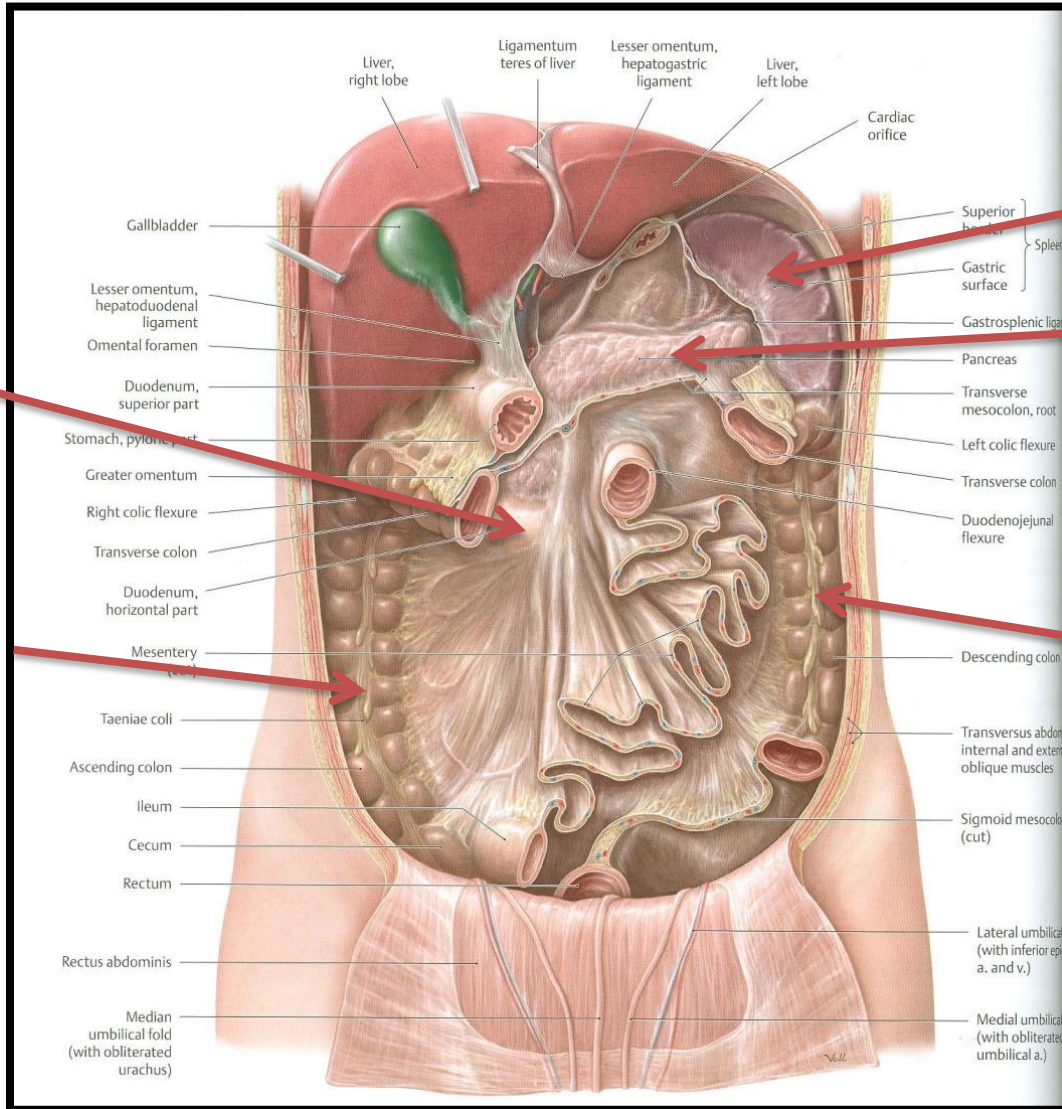
ABDOMEN – LAYER 1



**TRANSVERSE
COLON**

**JEJUNUM
&
ILEUM**

ABDOMEN – LAYER 2



DUODENUM

SPLEEN

PANCREAS

DESCENDING COLON

ASCENDING COLON

ABDOMEN – LAYER 3 (IN BLACK) + PART OF LAYER 2 (IN BLUE)

Right suprarenal gland

Duodenum

Right kidney

Inferior vena cava

Right psoas major

Left suprarenal gland

Pancreas

Left kidney

Abdominal aorta

Left psoas major

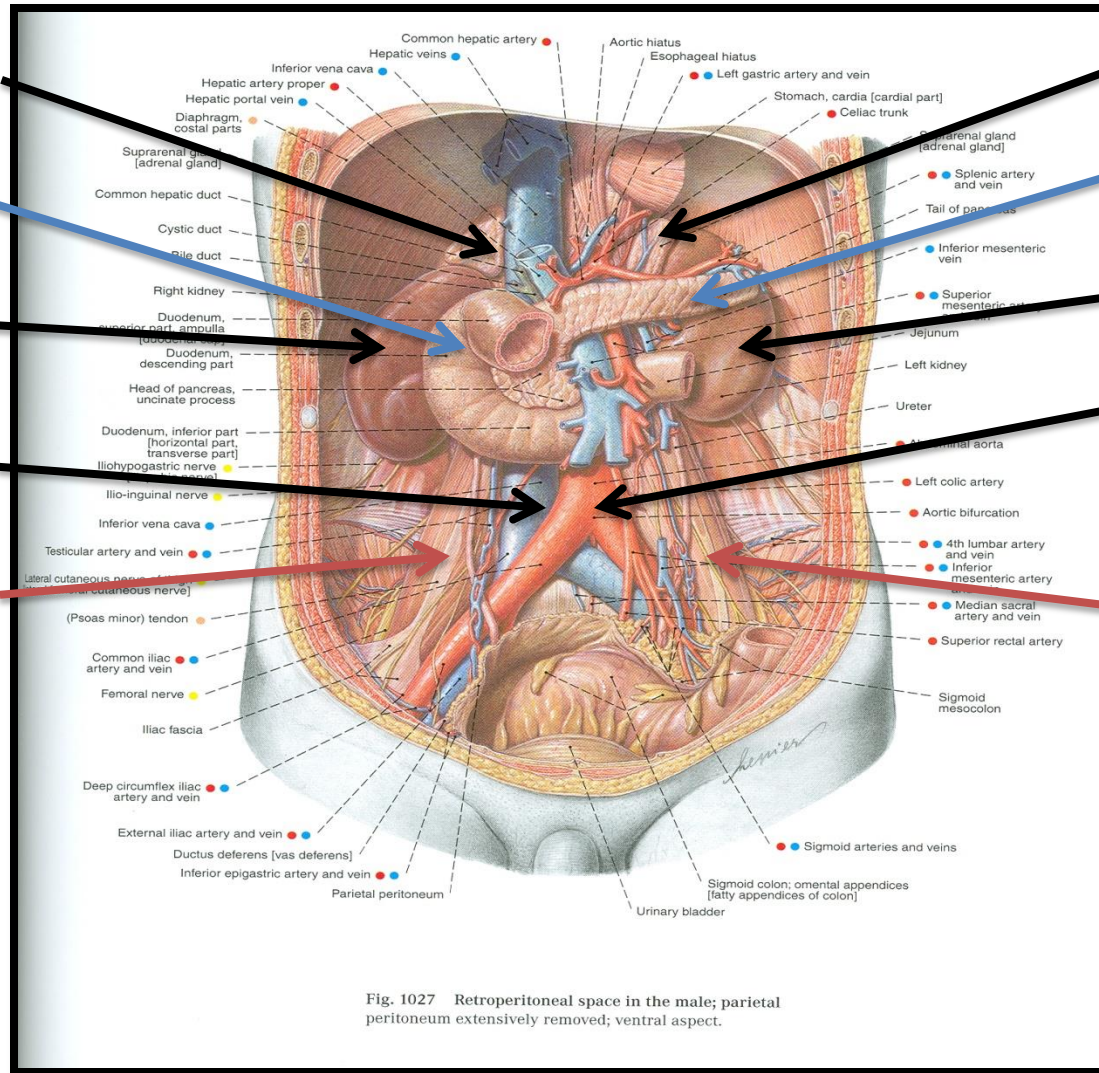


Fig. 1027 Retroperitoneal space in the male; parietal peritoneum extensively removed; ventral aspect.

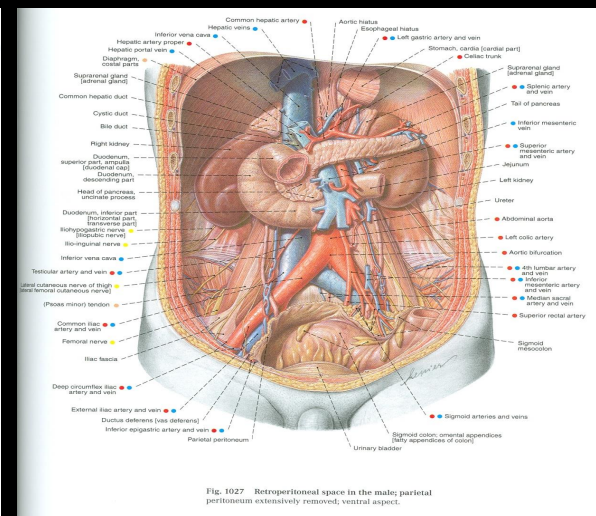
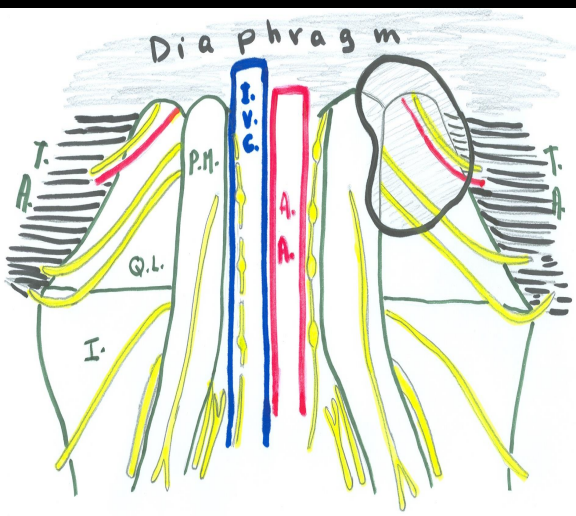


Fig. 1027 Retroperitoneal space in the male; parietal peritoneum extensively removed; ventral aspect.

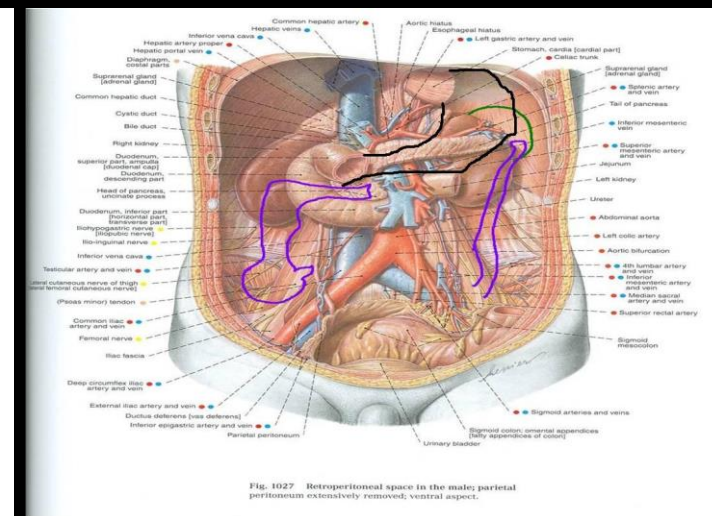


Fig. 1027 Retroperitoneal space in the male; parietal peritoneum extensively removed; ventral aspect.

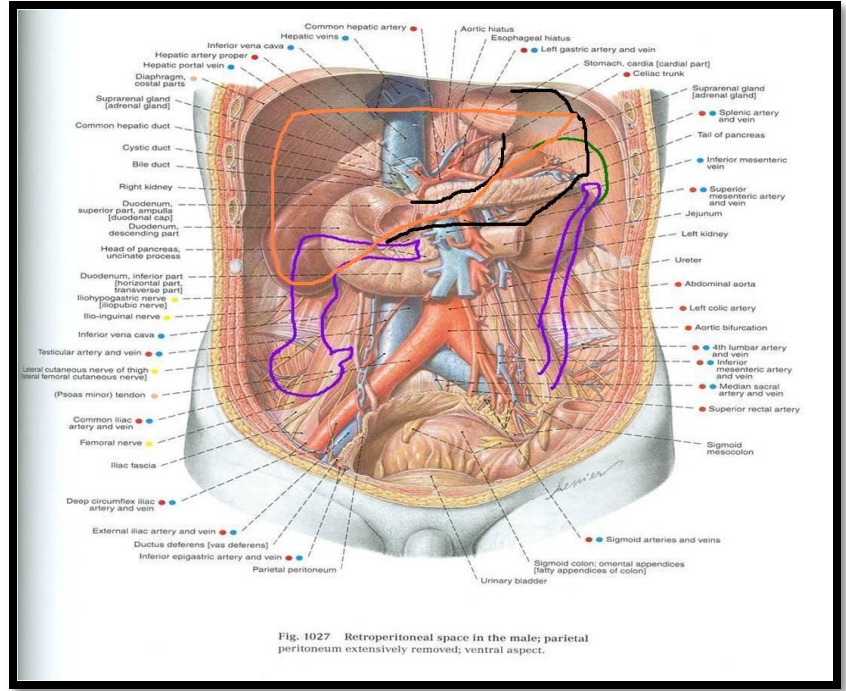


Fig. 1027 Retroperitoneal space in the male; parietal peritoneum extensively removed; ventral aspect.

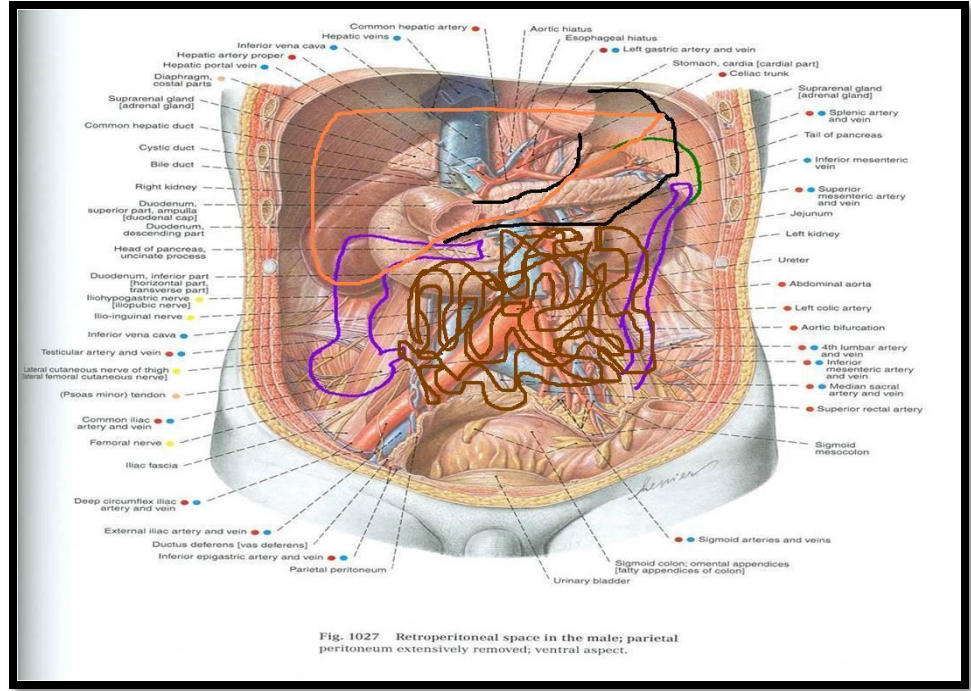


Fig. 1027 Retroperitoneal space in the male; parietal peritoneum extensively removed; ventral aspect.

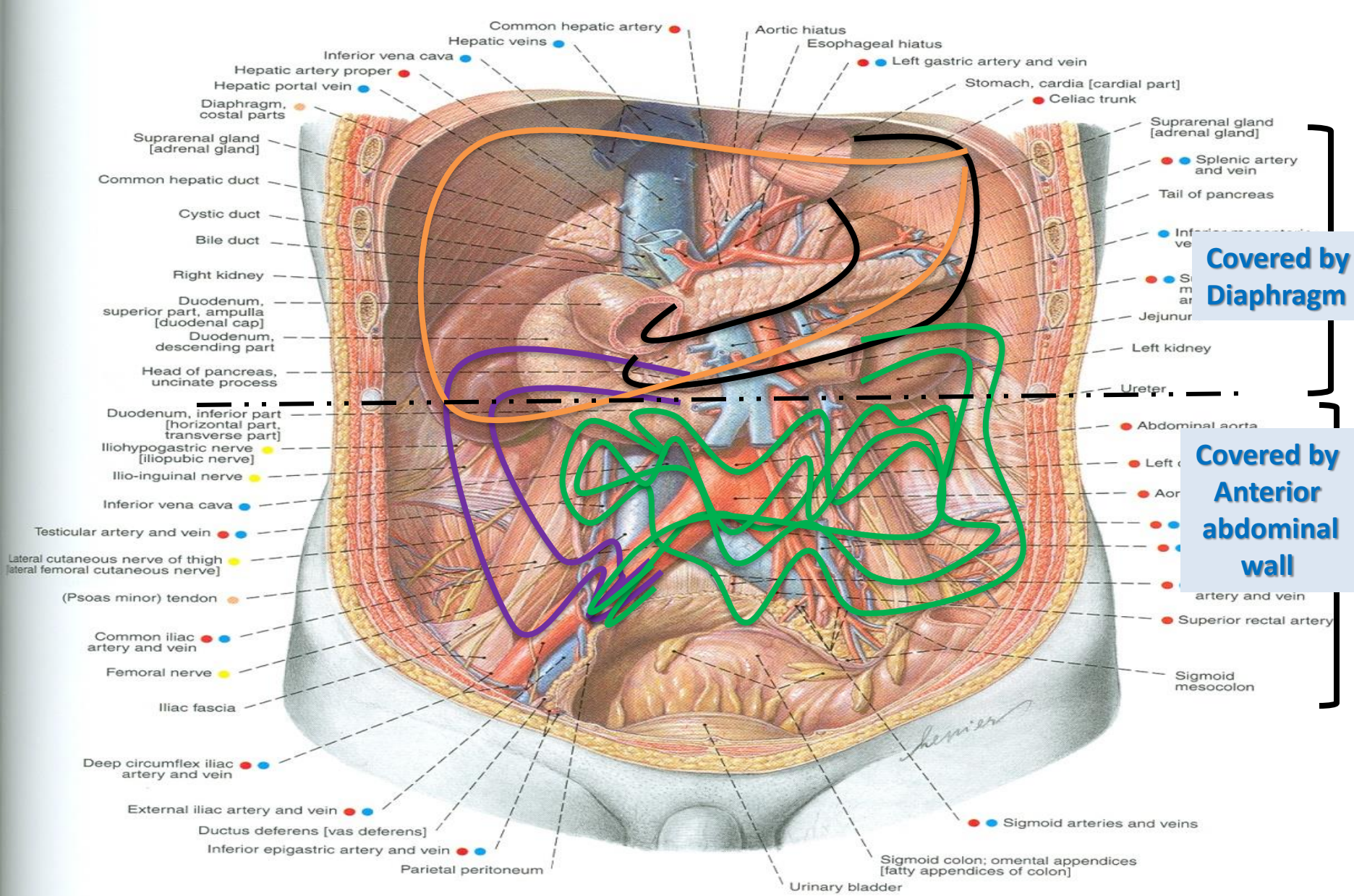
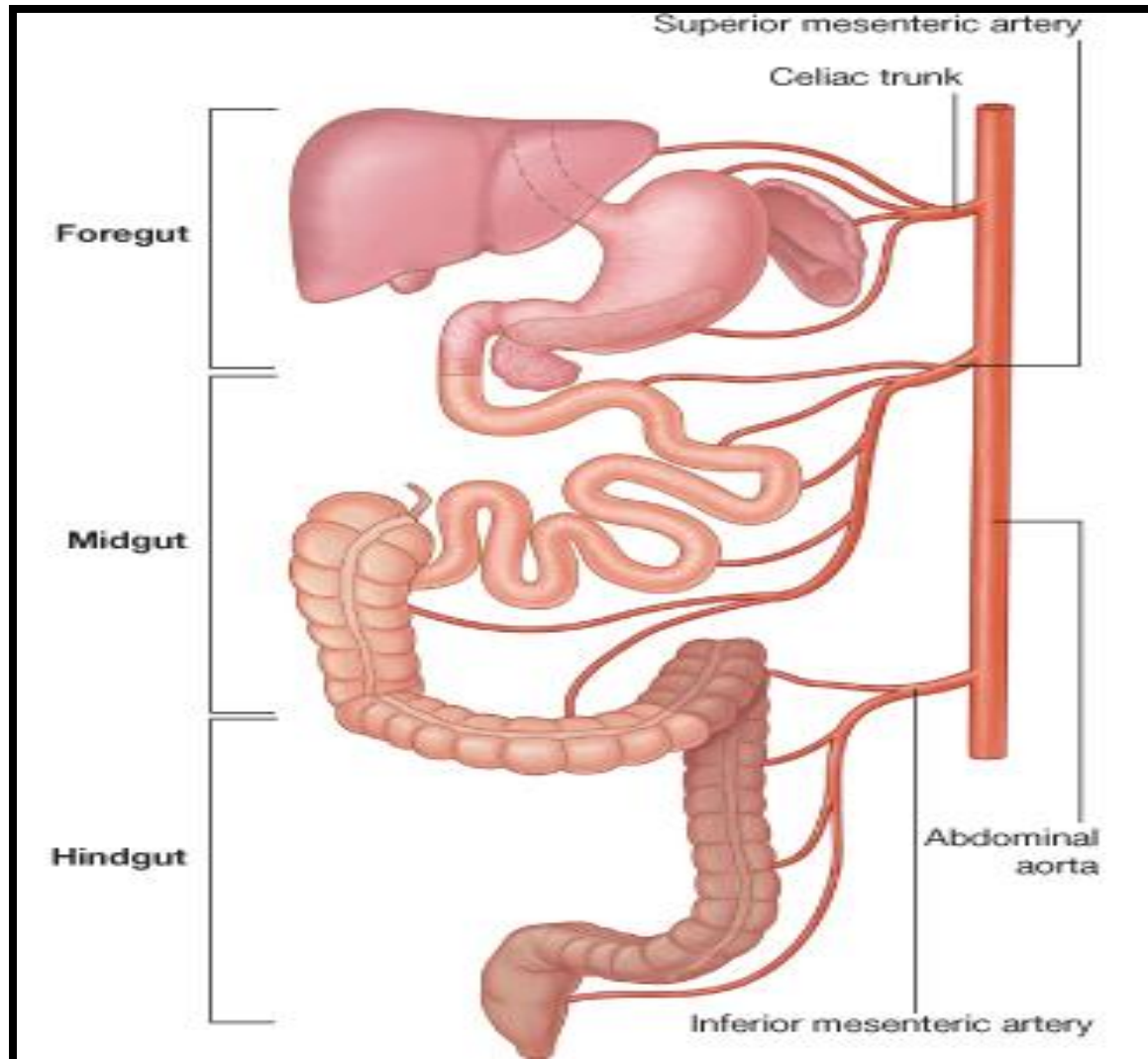


Fig. 1027 Retroperitoneal space in the male; parietal peritoneum extensively removed; ventral aspect.

RELATION BETWEEN EMBRYOLOGICAL ORIGIN OF GUT & ITS ARTERIAL SUPPLY





THANK YOU