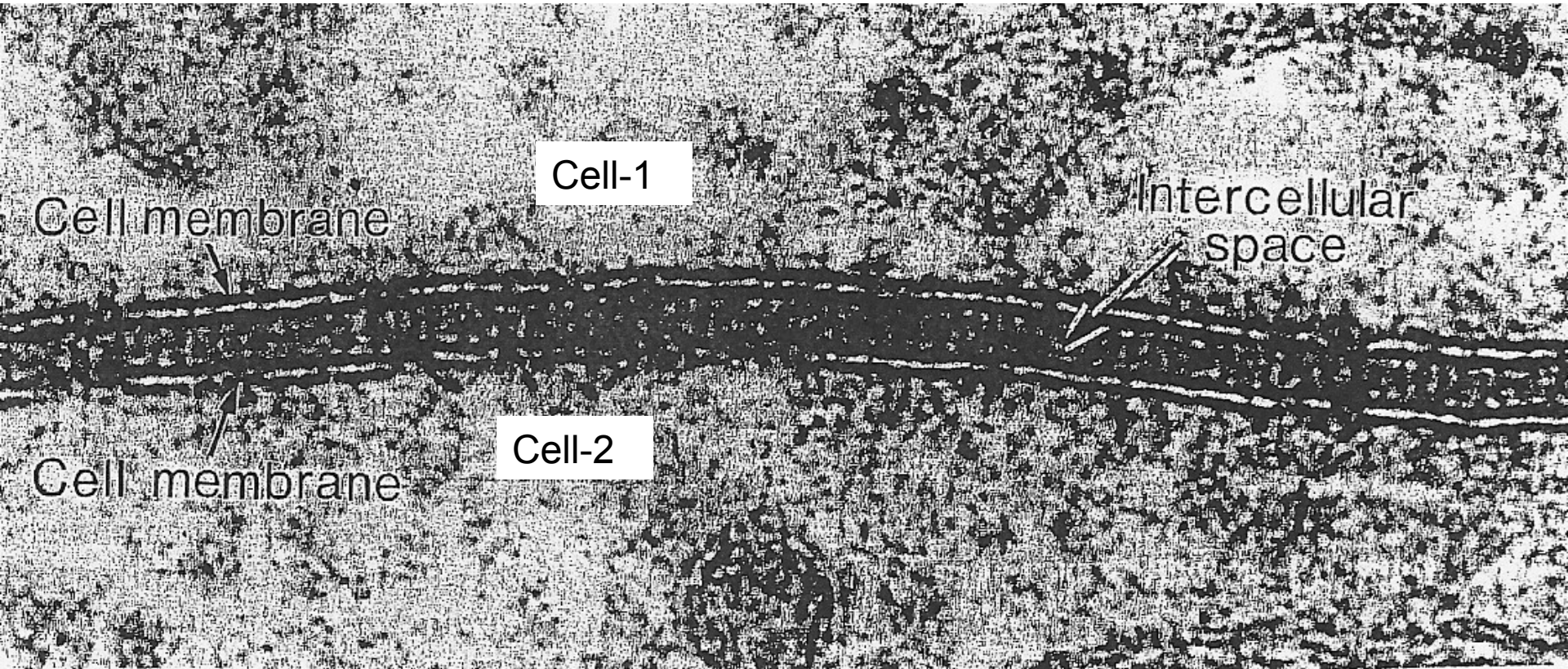
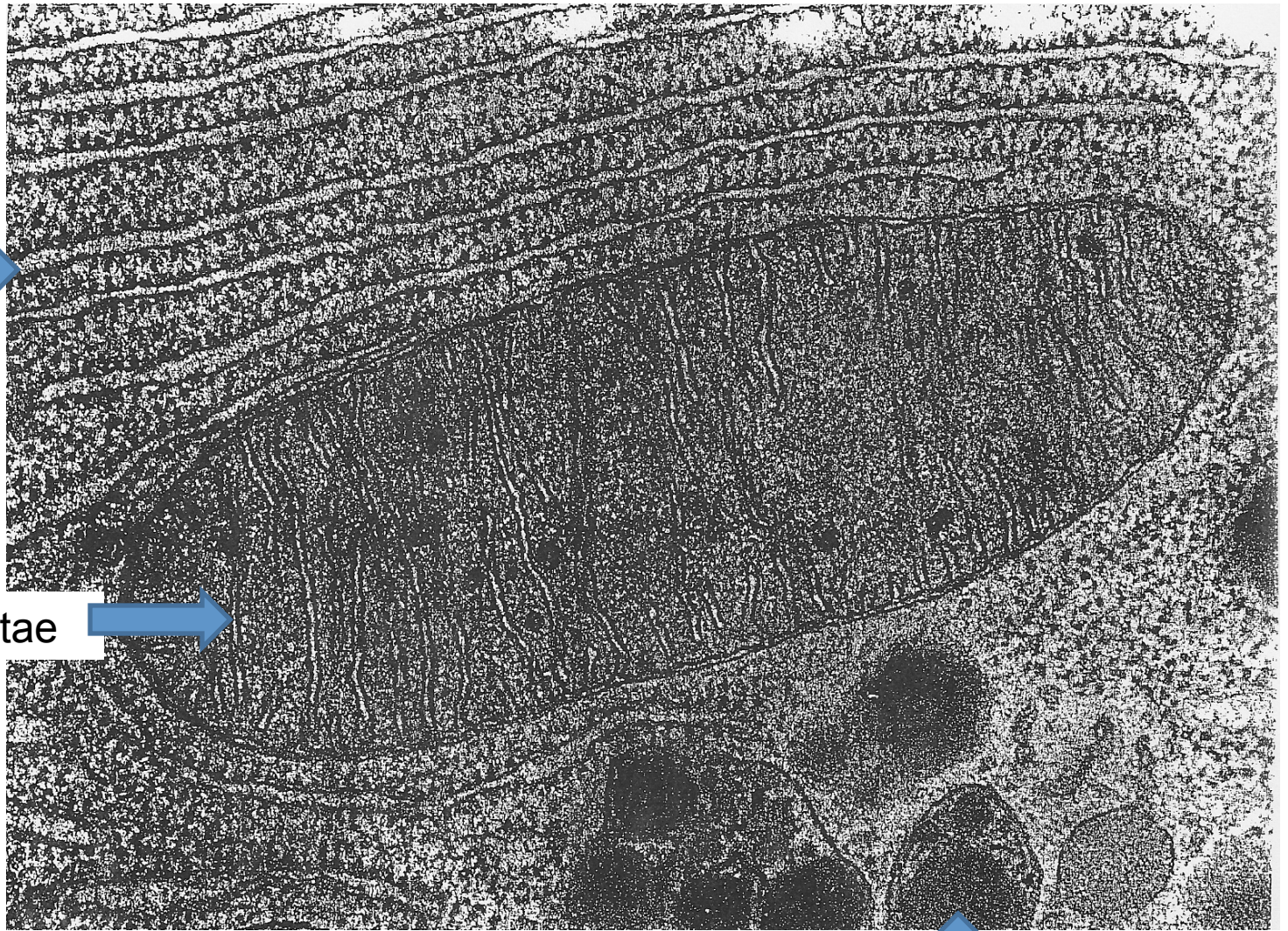


# Nucleus

- 1- Nucleolus
- 2- Heterochromatin
- 3- Euchromatin
- 4- nuclear envelop
- 5- Nucleolus associated heterochromatin
- 6- Nuclear pores



# Cell Membranes

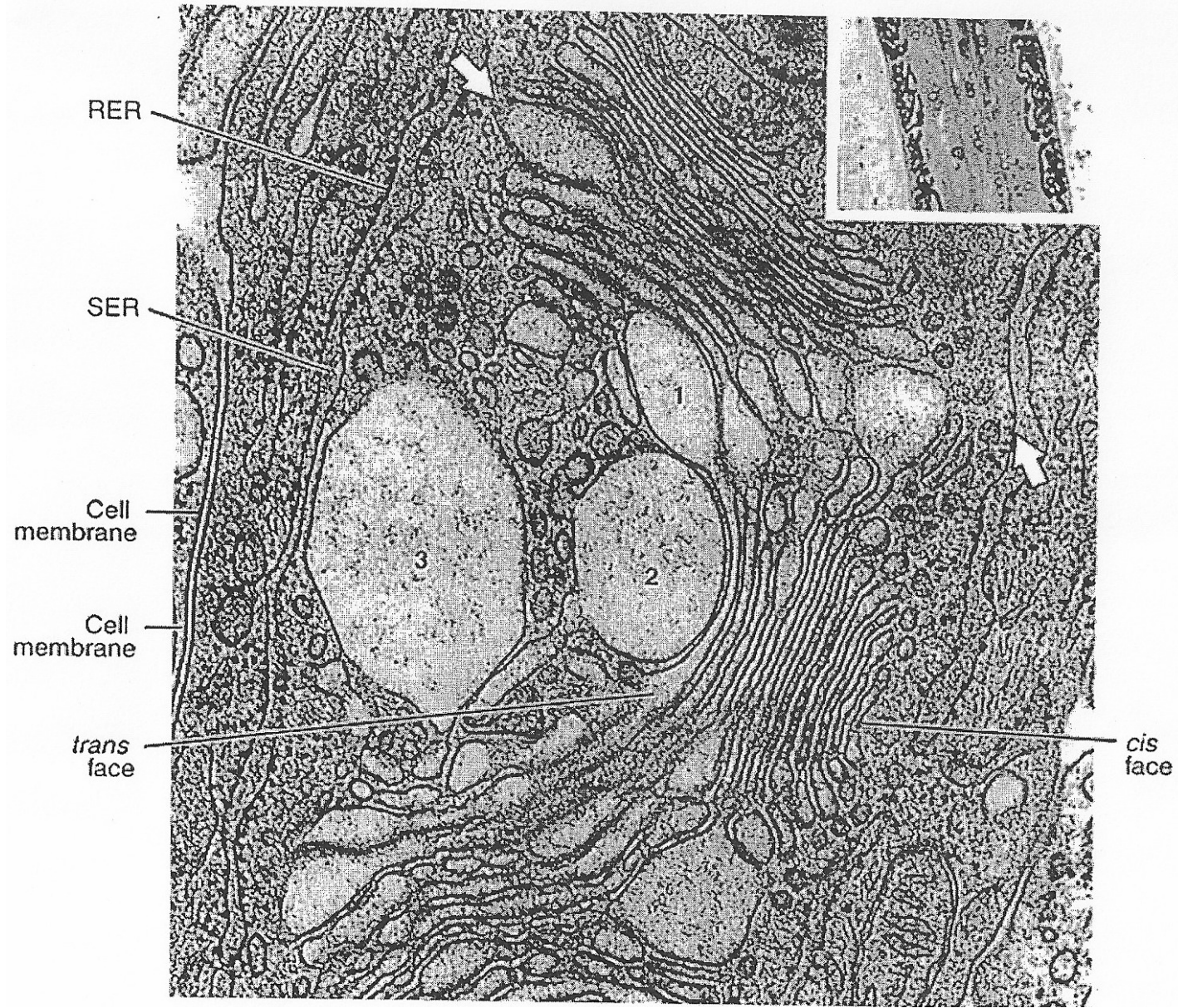


RER

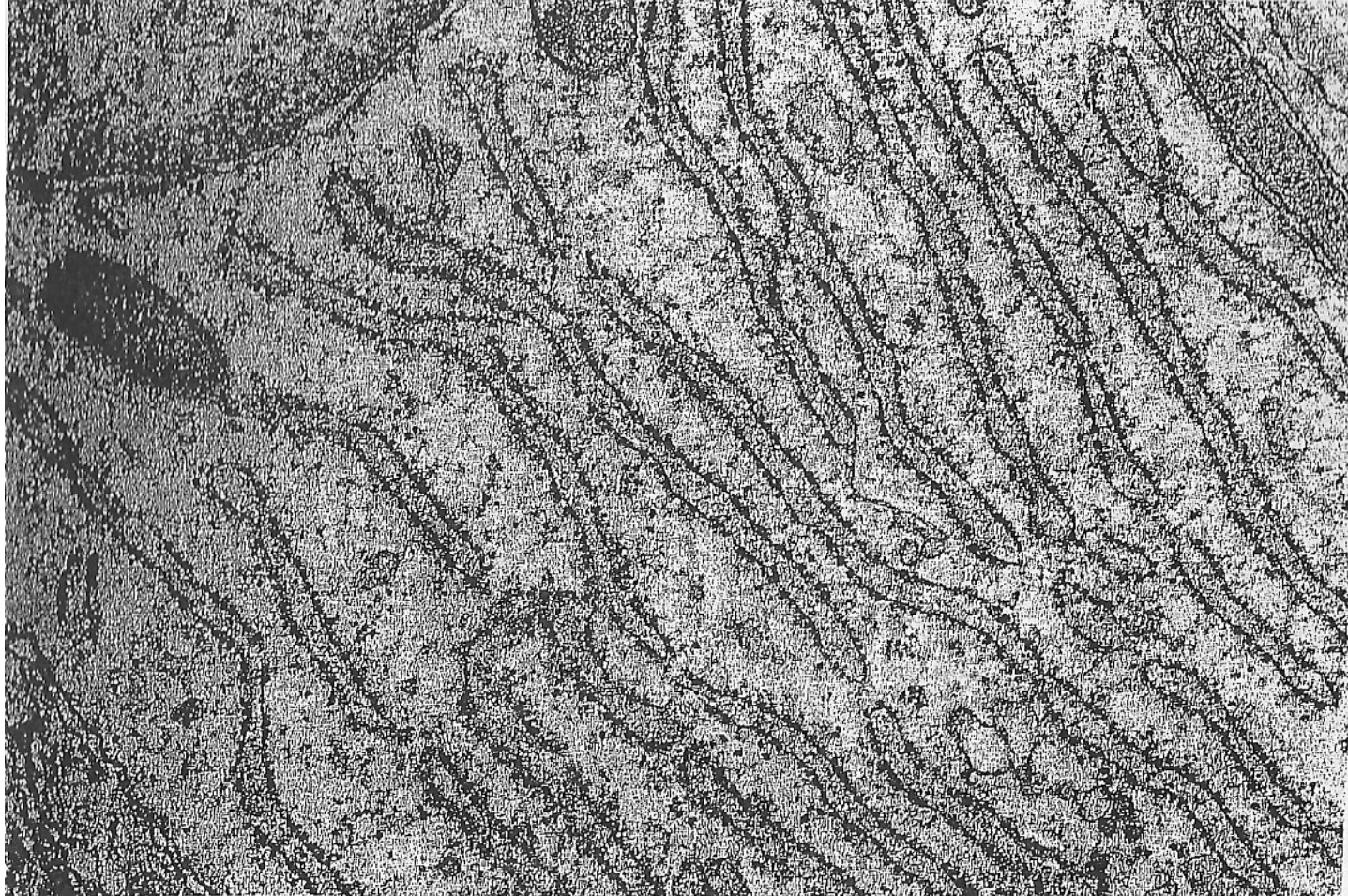
Cristae

**Mitochondria**

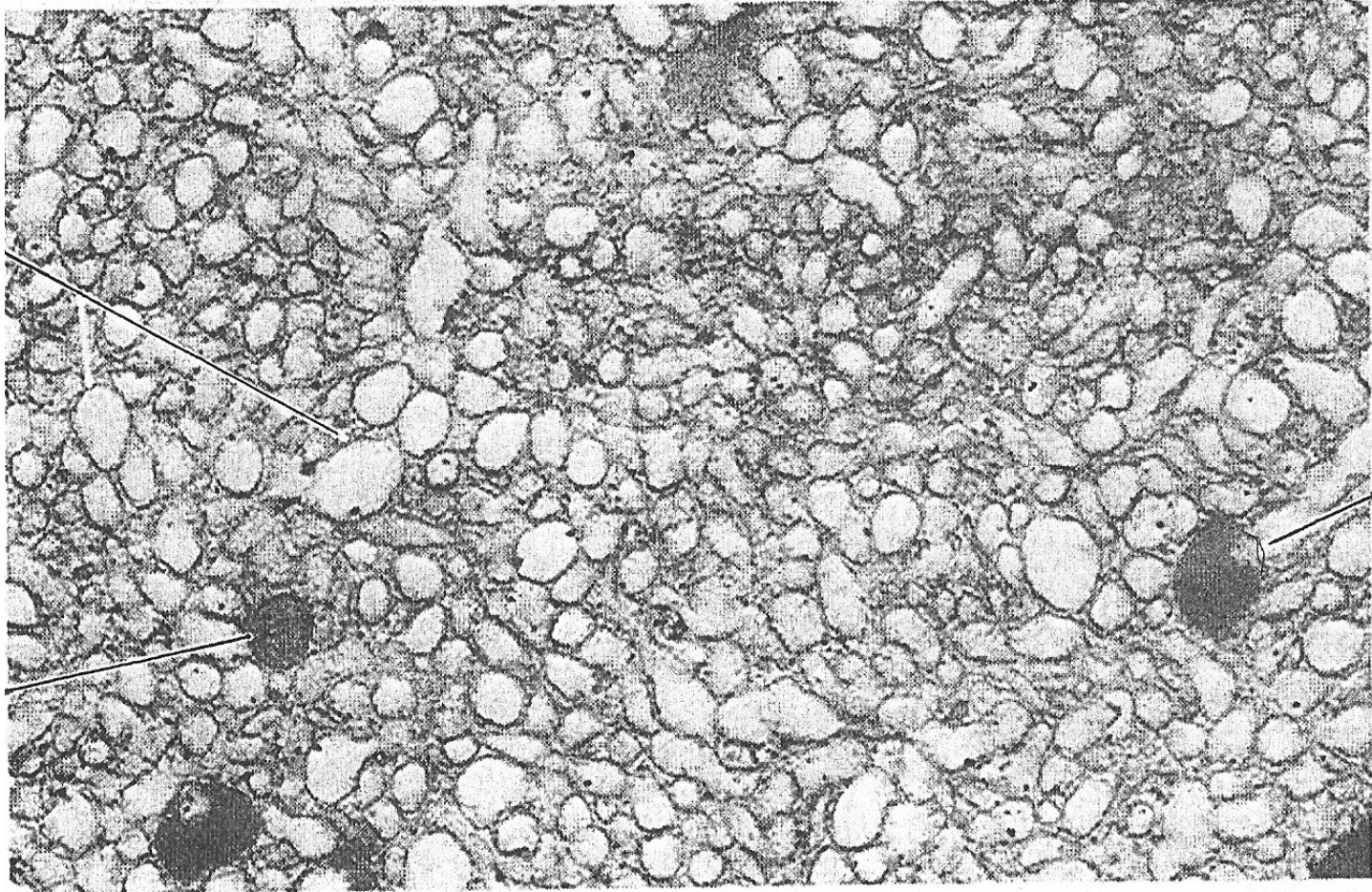
Lysosomes



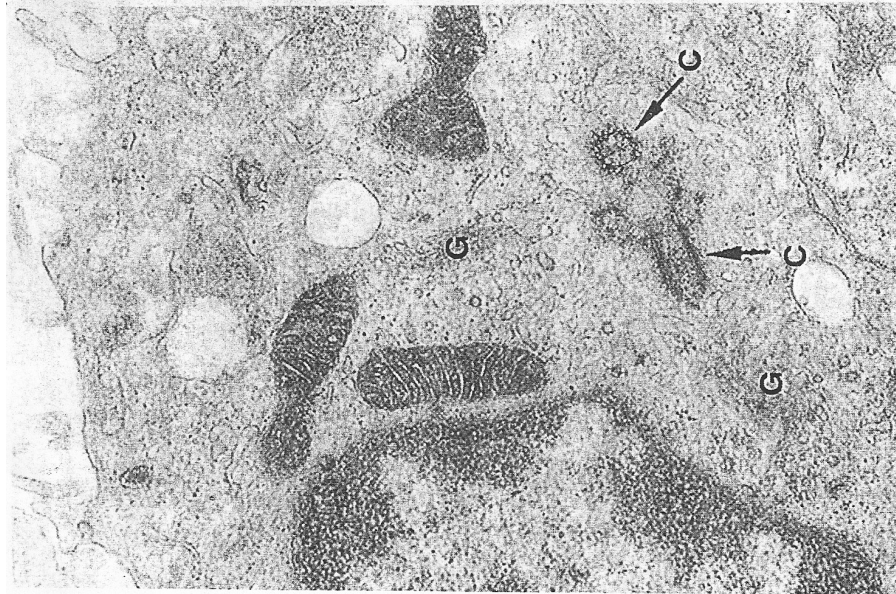
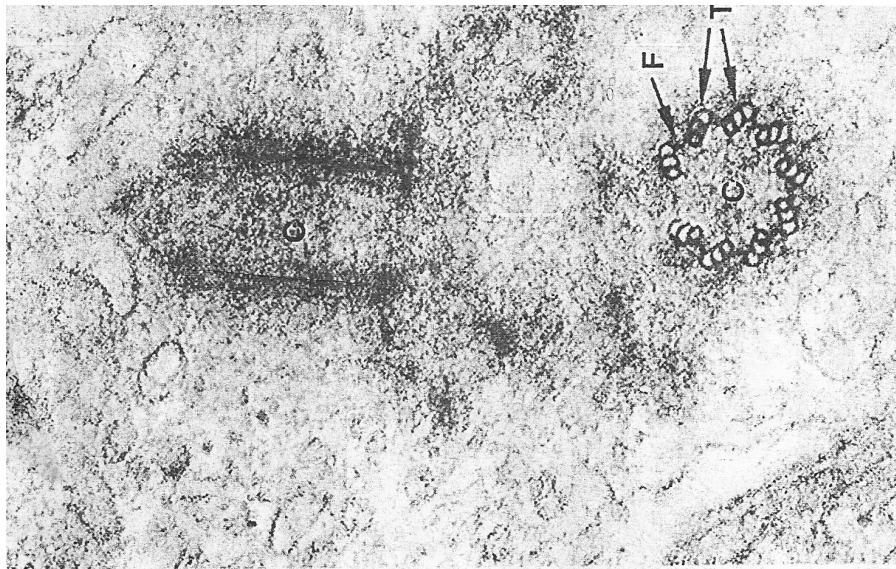
# Golgi Apparatus



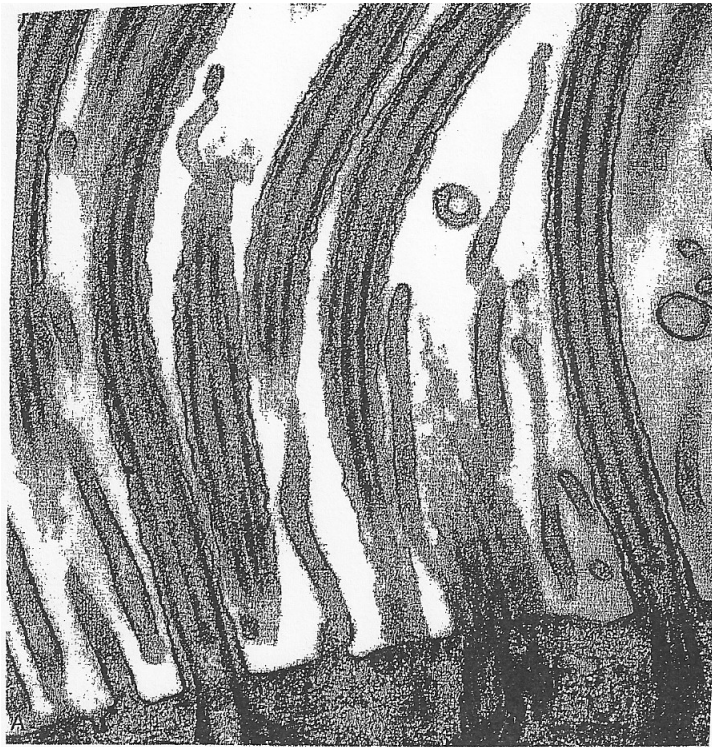
**Rough Endoplasmic Reticulum (RER)**



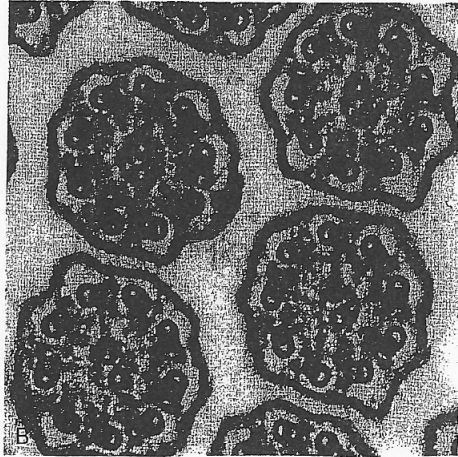
**Smooth Endoplasmic Reticulum (SER)**



**Centrioles**



L.S.

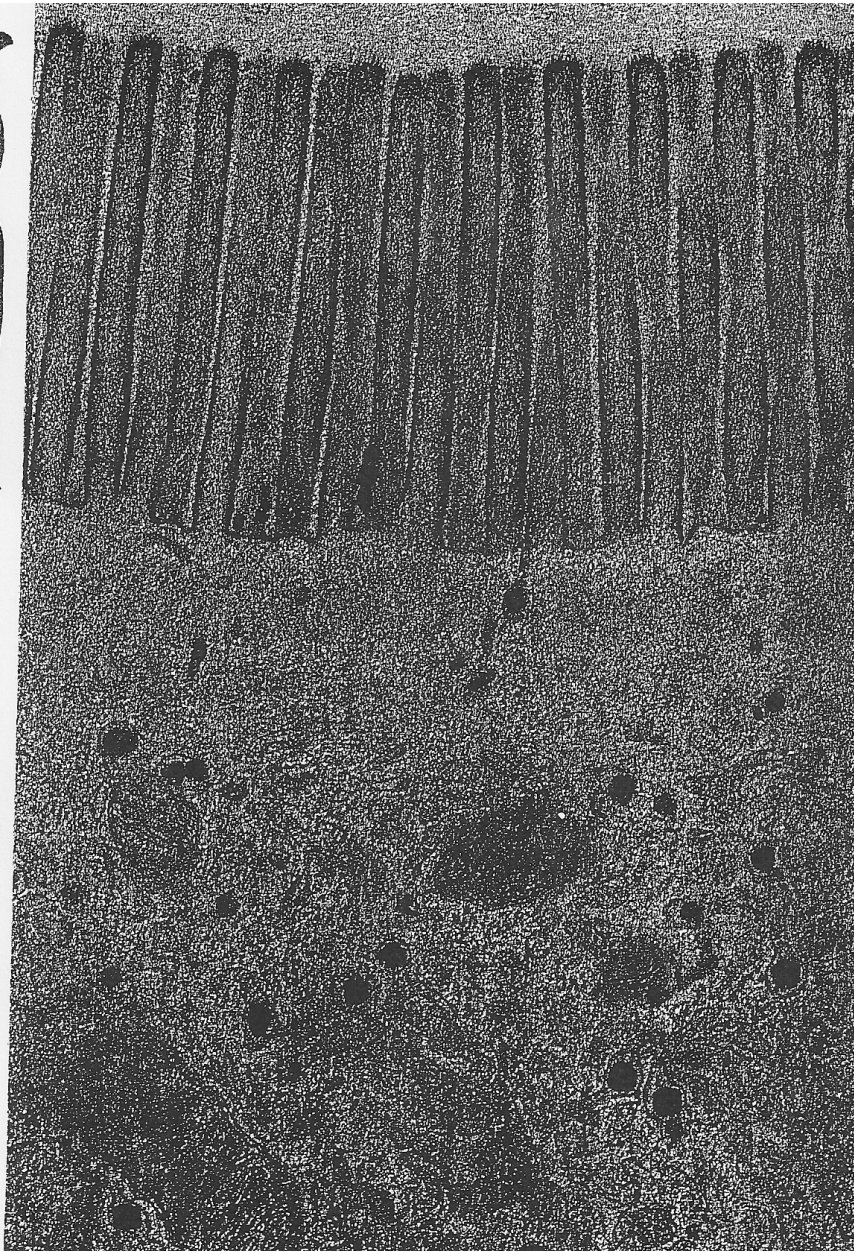


T.S.

**Cilia**



microvilli



**Microvilli**