

Physiology of Bone

Dr. Salah Elmalik

Physiology Department, KSU

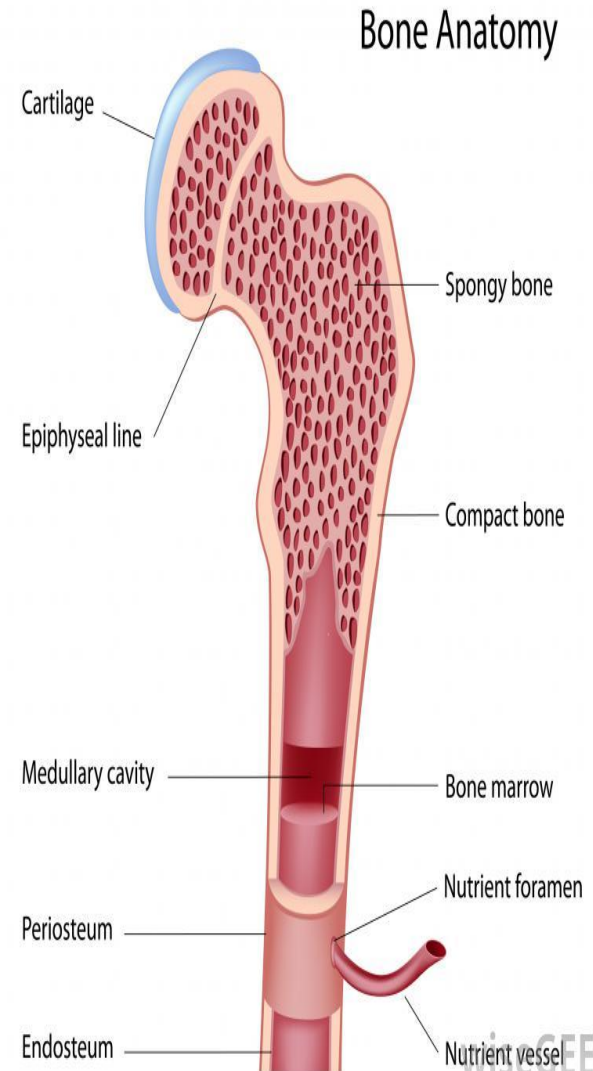
Objectives

By the end of the lecture you will be able to:

- 1- Define bone and differentiate cortical & trabecular bone (sites and function of each).
- 2- State the normal levels and forms of Ca^{++} in the ECF and its relation to PO_4 .
- 3- Identify the bone cells and the function of each.
- 4- Define bone remodelling and explain the mechanism of bone formation.
- 5- Define osteoporosis.
- 6- Discuss the effect of different hormones on bone physiology.

Physiology of Bone

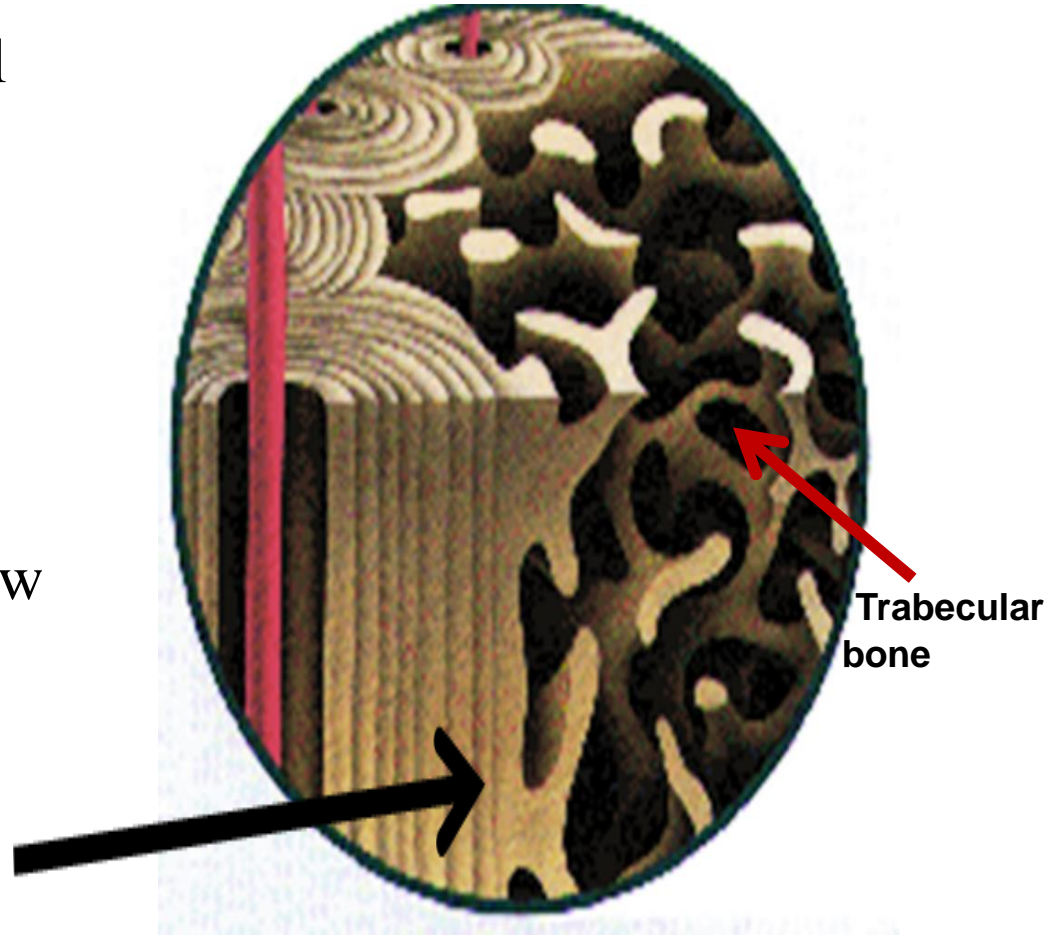
- Bone is a special form of connective tissue.
- It is well vascularized with total blood flow of 200–400 mL/min in adult humans.
- The ends of each long bone (**epiphyses**) are separated from the shaft of the bone by a plate of actively proliferating cartilage, the **epiphysial plate**.
- Linear bone growth can occur as long as the epiphyses are separated from the shaft of the bone, but such growth ceases after the epiphyses unite with the shaft (**epiphysial closure**).



Functions of bone

- ❑ Is involved in the overall Ca^{++} and PO_4^- homeostasis.
- ❑ Protects the vital organs,
- ❑ Permits locomotion and support against gravity.
- ❑ Contains the bone marrow (blood cells formation)
- ❑ Reservoir for calcium & phosphate

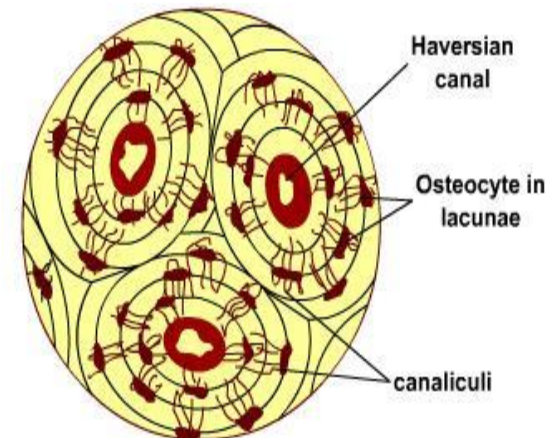
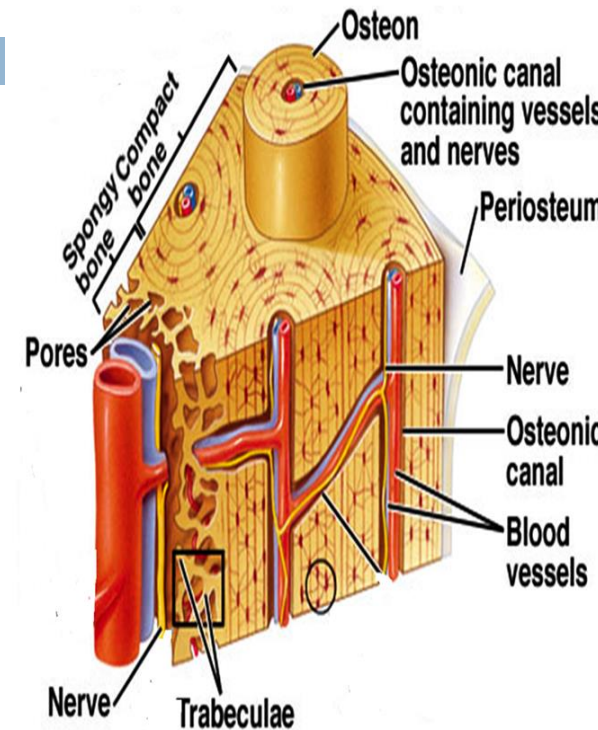
Compact
bone



Types and structure of bone

Compact or cortical bone: in the outer layer of most bones is (80%) of the bones in the body.

- It has more bone tissue and less bone space
- Has high resistance to bending and torsion
- It is composed of overlapping circular structures (formations) called Haversian Systems or Osteons . Each osteon has a central canal called Osteonic Canal or Haversian Canal
- The Osteonic Canal contain blood vessels (capillaries, arterioles, venules), nerves and lymphatic's.
- Between Haversian systems are concentric layers of mineralized bone called interstitial



- **Trabecular or spongy** bone inside the cortical bone, is 20% of the body bones
- Though it represents only 20% of the skeletal mass, it has 5 times greater surface area than cortical bone
- Because of its large surface, it has faster turnover rate than cortical bone ; hence it is more important than cortical bone in terms of calcium turnover
- Compared to cortical bone , it is:
 - (1) less dense,
 - (2) more elastic and
 - (3) has a higher turnover rate than compact bone .
- The center of the bone contains red, yellow marrow, bone cells and other tissues.

Composition of Compact Bone

A- Matrix

(30%) is organic Matrix : composed of

a- Collagen fibers 90-95%: extend primarily along the lines of tensional force and give bone its powerful tensile strength.

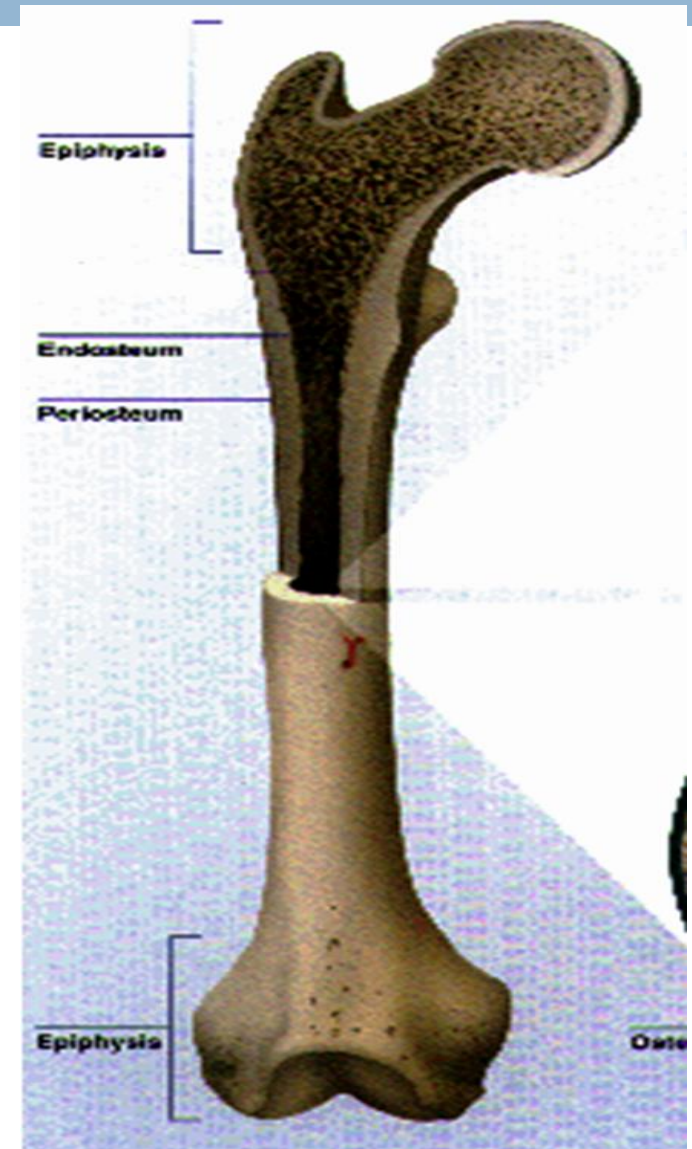
b- Ground substance 5-10% of

ECF and Proteoglycans (chondroitin sulphate and hyaluronic acid)

(70%) is bone Salts :

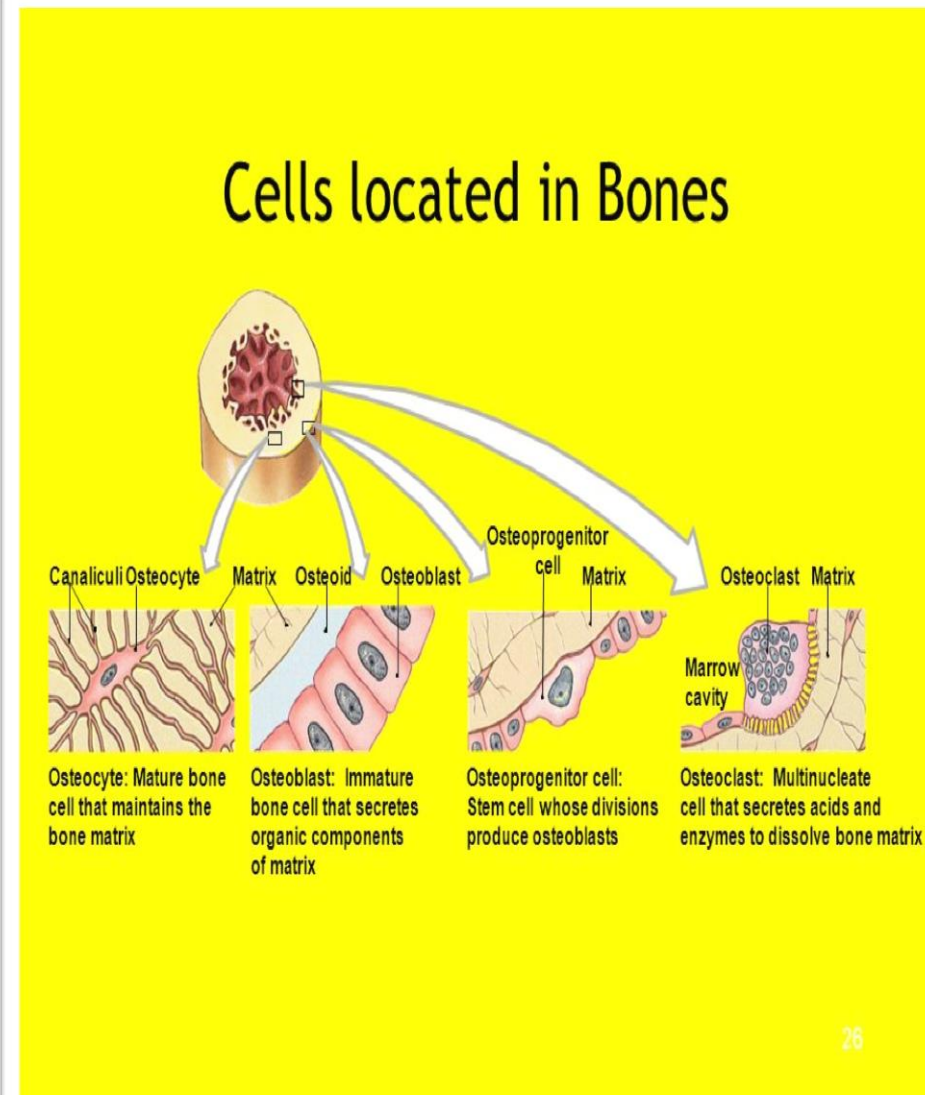
- ❑ Crystalline salts of Ca^{++} & PO_4 (Hydroxyapatite) the ratio of Ca/P ratio is 1.3-2).
- ❑ Mg^+ , Na^+ , K^+ , Carbonate ions are also present.

NB: newly formed bone have a considerably higher percentage of matrix in relation to salts



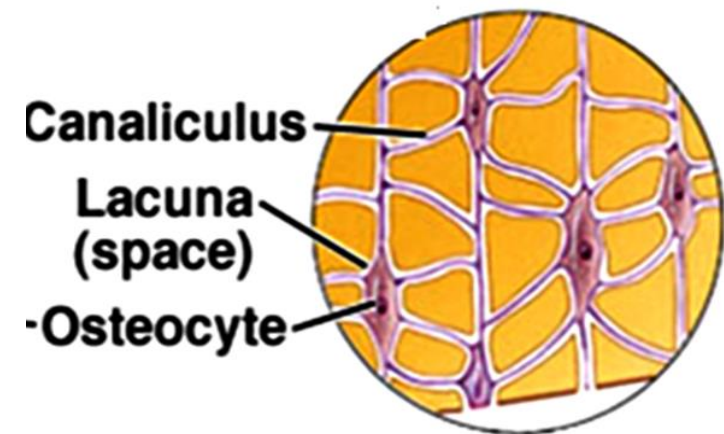
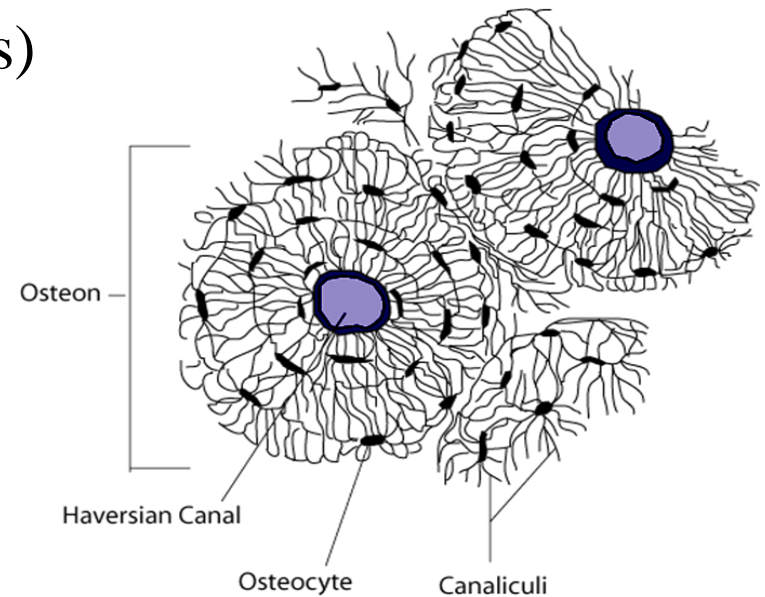
B- Bone cells

- **Osteoblasts** are the bone forming cells that secrete collagen forming a matrix around themselves which then calcifies and when surrounded by calcified matrix, they are called **Osteocytes** and send processes into the canaliculi that ramify throughout the bone.
- Osteoblasts regulate Ca and Phosphate concentration in bone fluid.
- **Osteoclasts** are multinuclear cells that erode and resorb previously formed bone. They phagocytose bone, digesting it in their cytoplasm.



Mechanism of Bone Calcification.

- ❑ **Osteoblasts** secrete *collagen* (monomers) and *ground substance* (proteoglycans).
- ❑ The collagen monomers polymerize to collagen fibers.
- ❑ The resultant tissue becomes **osteoid**, a cartilage-like material differing from cartilage in that calcium salts readily precipitate in it.
- ❑ Osteoblasts become entrapped in the osteoid and are now called **osteocytes**.
- ❑ After the osteoid is formed, calcium salts begin to precipitate on the collagen fibers forming the **hydroxyapatite crystals**.



Tensile and Compressional Strength of Bone

- The collagen fibers of bone, like those of tendons, have great tensile strength, whereas the calcium salts have great compressional strength.
- These combined properties plus the degree of bondage between the collagen fibers and the crystals provide a bony structure that has both extreme tensile strength and extreme compressional strength.
- **N.B:** hydroxyapatite crystals fail to be formed in normal tissues except in bone despite the high levels of Ca & P ions due to the presence of an inhibitor of precipitation called *pyrophosphate*.

Body Calcium levels

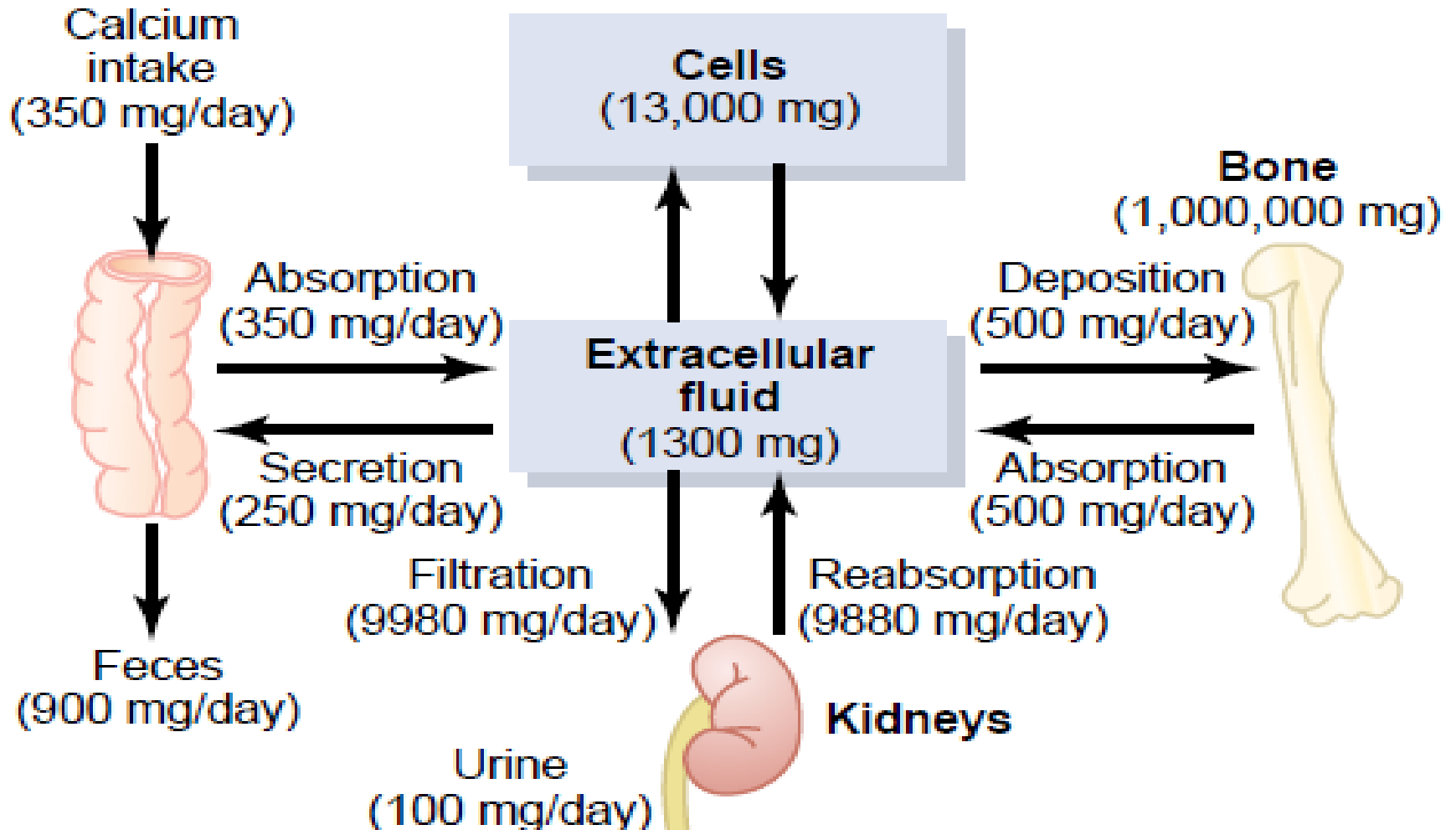
- 1.5% of body weight is Calcium,
- about 1100 - 1300 gm.
- 99% is in the skeleton.

TABLE 36.1

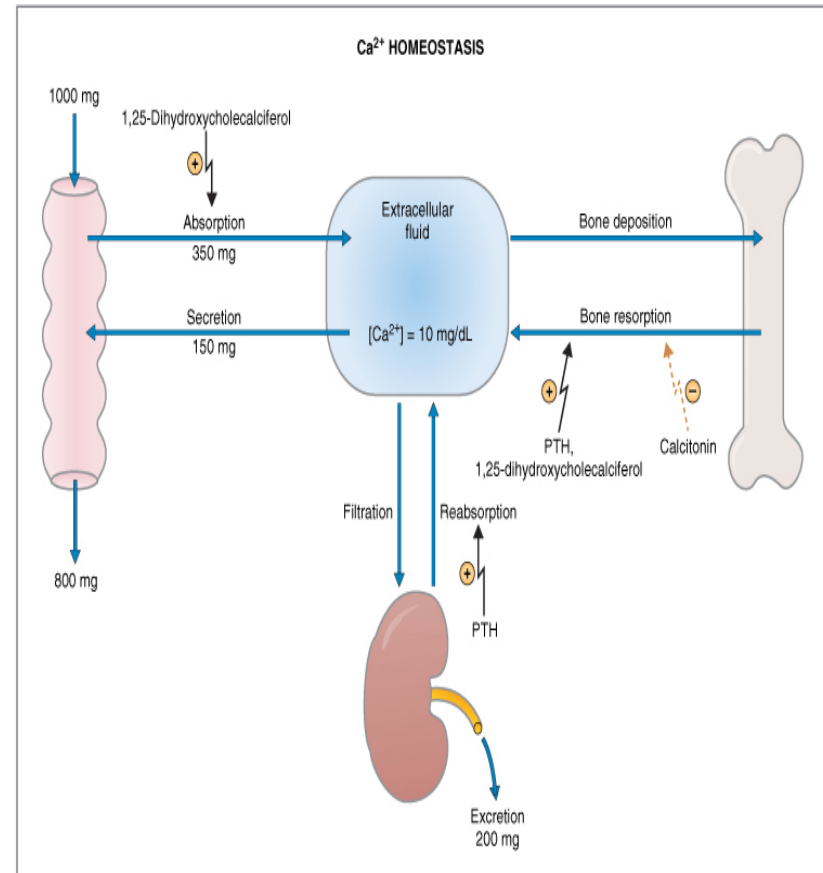
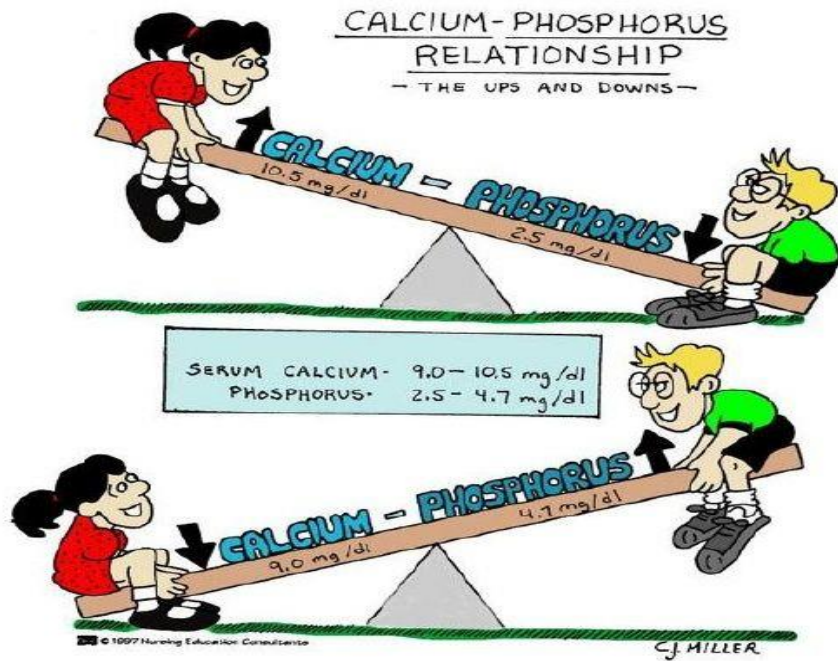
Body Content and Tissue Distribution of Calcium and Phosphorus in a Healthy Adult

	Calcium	Phosphorus
Total Body Content	1,300 g	600 g
Relative Tissue Distribution (% of total body content)		
Bones and teeth	99%	86%
Extracellular fluid	0.1%	0.08%
Intracellular fluid	1.0%	14%

Calcium homeostasis in human body



Serum calcium and Phosphate



© Elsevier. Costanzo: Physiology 3E www.studentconsult.com

[Add to My Slides](#) [Go to My Slides](#)

Figure 9-34 Ca²⁺ homeostasis in an adult eating 1000 mg/day of elemental Ca²⁺. Hormonal effects on Ca²⁺ absorption from the gastrointestinal tract, bone remodeling, and Ca²⁺ reabsorption in the kidney are shown. PTH, Parathyroid hormone.

Calcium Exchange Between Bone and ECF

- The bone contains a type of *exchangeable* calcium that is always in equilibrium with the Ca^{++} ions in the ECF
- It normally amounts to about (0.4-1%) of the total bone calcium.
- This calcium is a form of readily mobilizable salt such as CaHPO_4 and other amorphous calcium salts.
- The importance of exchangeable calcium is that it provides a rapid *buffering* mechanism to keep the Ca^{++} ions concentration in ECF from rising to excessive levels or falling to very low levels under transient conditions of excess or decreased availability of calcium.

Deposition and Absorption of Bone

Remodeling of Bone

- Bone remodeling is a process that refers to the continuous processes of bone absorption (by osteoclasts) & then its deposition (by osteoblasts).
- Osteoblasts are found on the outer surfaces of the bones and in the bone cavities.
- A small amount of osteoblastic activity occurs on about 4% of all bone surfaces at any given time in an adult, so that at least some new bone is being formed constantly.
- The renewal rate is about 4% per year for compact bone and 20% per year for trabecular bone.

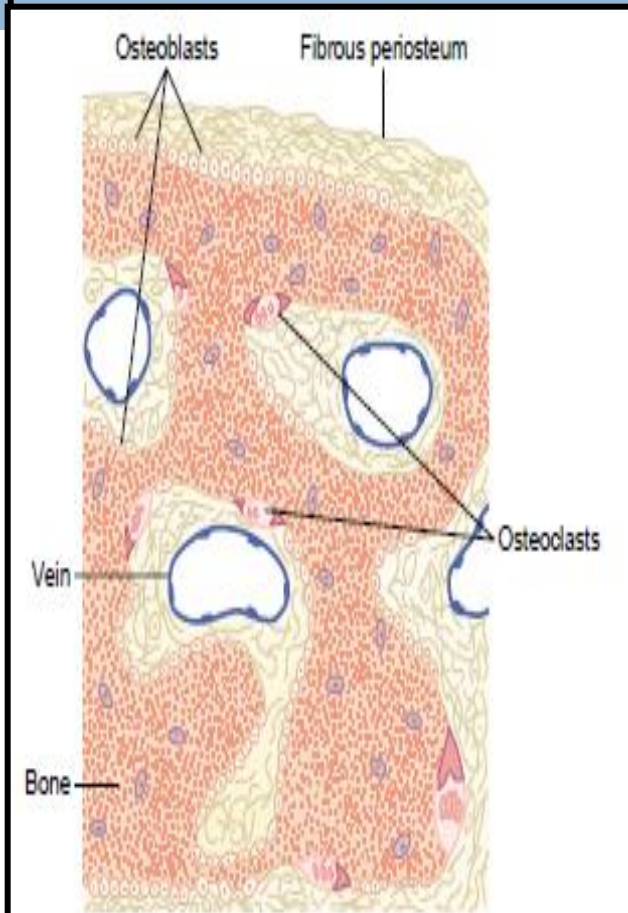


Figure 79-4

Osteoblastic and osteoclastic activity in the same bone.

Cont.....Bone resorption

- **Osteoclasts** are large phagocytic multinucleated cells
- They are normally active on less than 1% of the bone surfaces of an adult.
- The osteoclasts secrete two types of substances:
 - (1) proteolytic enzymes from the lysosomes
 - (2) several acids from the mitochondria and secretory vesicles.
- The enzymes dissolve the organic matrix, and the acids cause solution of the bone salts.

The osteoclastic cells also phagocytose minute particles of bone matrix and crystals, dissolving them and releasing the products into the blood.

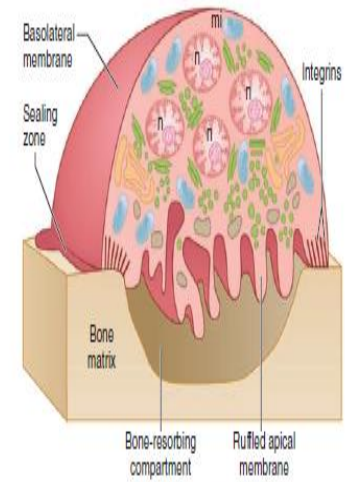
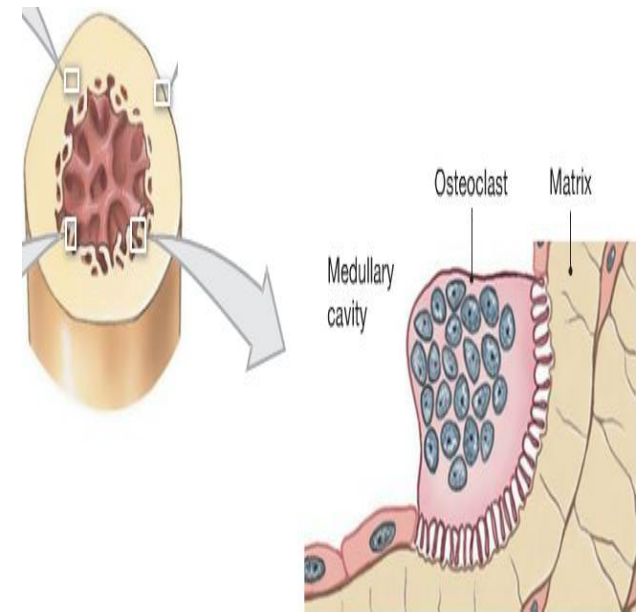


FIGURE 21-10 Osteoclast resorbing bone. The edges of the cell are tightly sealed to bone, permitting secretion of acid from the ruffled apical membrane and consequent erosion of the bone underneath the cell. Note the multiple nuclei (n) and mitochondria (mi), (used with permission of R. Baron.)



Osteoclast: Multinucleate cell that secretes acids and enzymes to dissolve bone matrix

Value of Continual Bone Remodeling

- 1- Bone adjusts its strength in proportion to the degree of bone stress and it thickens when subjected to heavy loads.
- 2- The shape of the bone can be rearranged for proper support of mechanical forces by deposition and absorption of bone in accordance with stress patterns.
- 3- Because old bone becomes relatively brittle and weak, new organic matrix is needed as the old organic matrix degenerates. In this manner, the normal toughness of bone is maintained.

Therefore, the bones of children are less brittle in comparison with the bones of the elderly, due to more remodeling in the children.

Control of the Rate of Bone Deposition by Bone “Stress”

- Bone is deposited in proportion to the load that it must carry.
- Continual physical stress stimulates osteoblastic deposition and calcification of bone.
- The bones of athletes become considerably heavier than those of no athletes. Also, the bone of the leg in the cast becomes thin and up to 30 % decalcified within a few weeks.
- Bone stress also determines the shape of bones under certain circumstances. (e.g. Healing of fractures may start angulated in children then become straight).

Repair of a Fracture Activates Osteoblasts

- Fracture of a bone activates all the periosteal and intraosseous osteoblasts involved in the break.
- Large numbers of new osteoblasts are formed from *osteoprogenitor cells*, which are bone stem cells in the surface tissue lining bone, called the "bone membrane.
- Shortly a large bulge of osteoblastic tissue and new organic bone matrix, develops between the two broken ends of the bone followed shortly by the deposition of calcium salts. This is called a *callus*.

Hormonal Control of Calcium Metabolism & Physiology of Bone

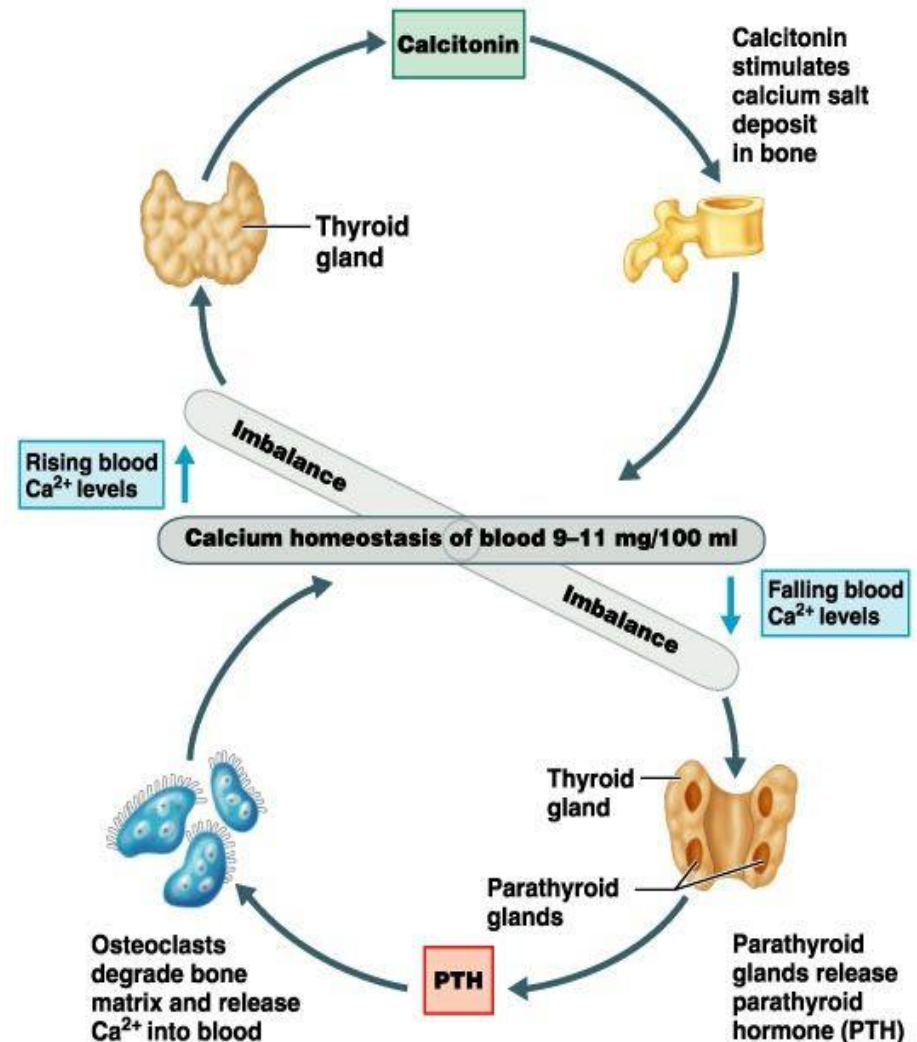
Three major hormones are concerned :

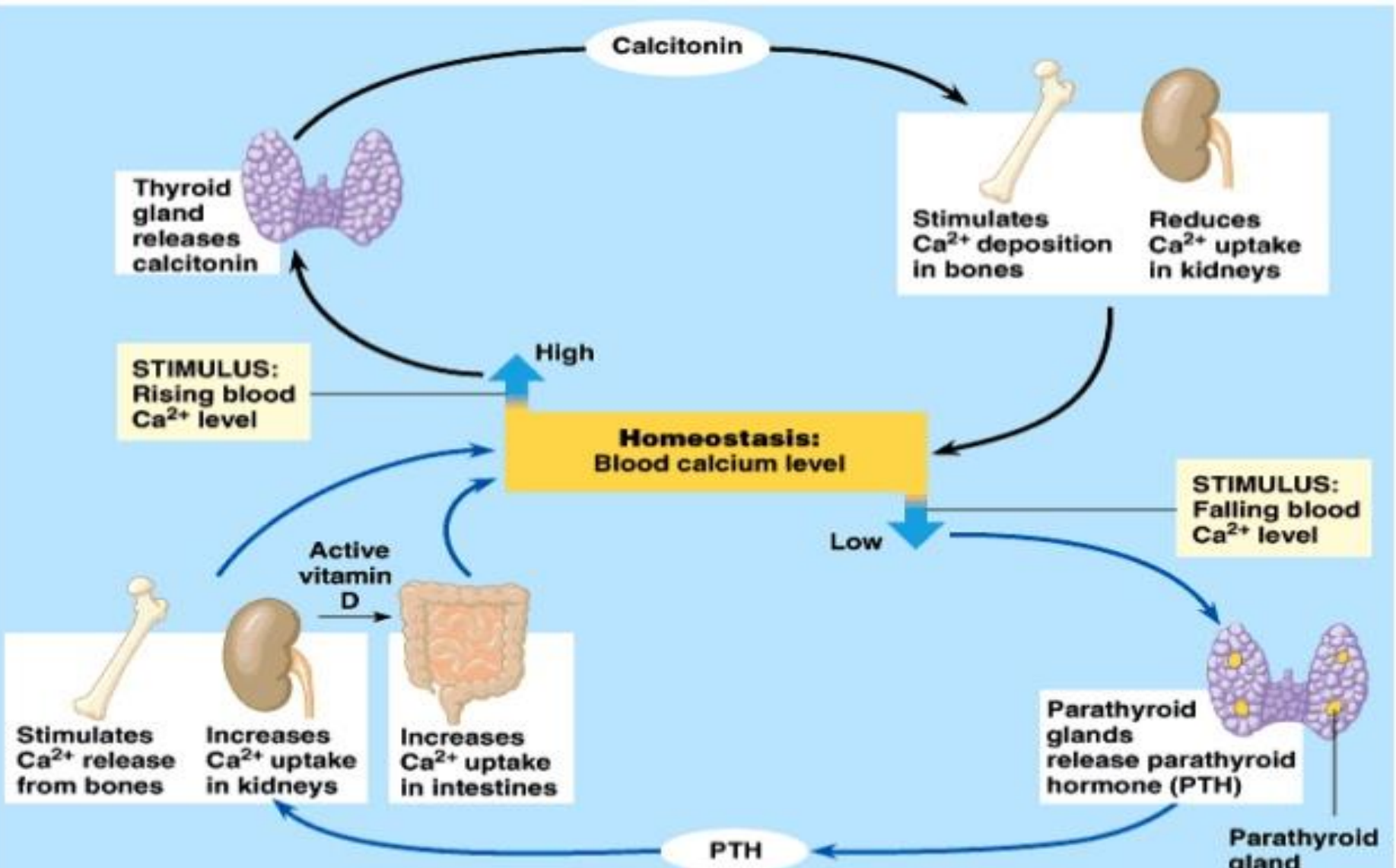
□ *1, 25 dihydroxycholecalciferol*: a steroid hormone formed from Vitamin D.

□ *Parathyroid hormone (PTH)*: secreted by parathyroid gland

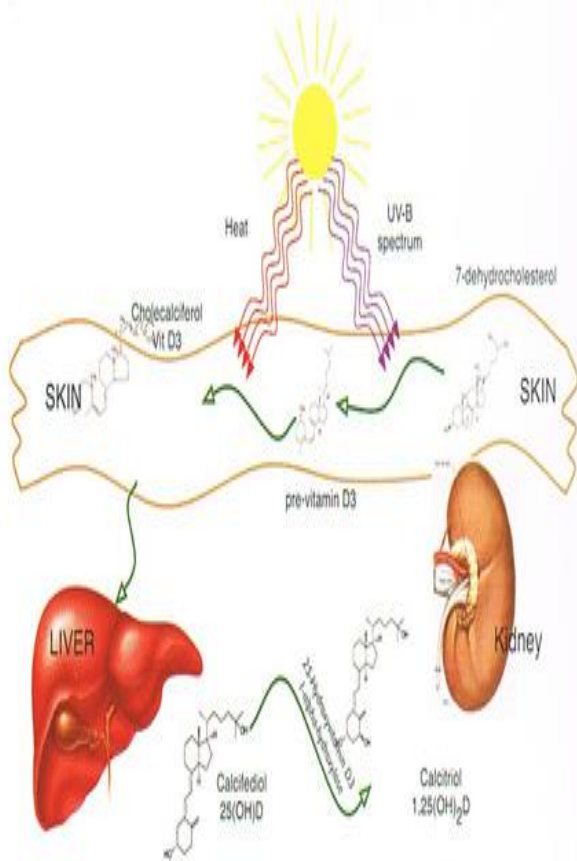
□ *Calcitonin*: secreted by c-cells in the thyroid gland.

□ To a lesser extent ; Glucocorticoids, GH, estrogens & various growth factors also affect Calcium Metabolism.





Vitamin D



Liver converts D3 to Calcifediol & stores it for 3-6 weeks

Kidney converts Calcifediol to Calcitriol

Calcitriol hormonal actions

*increases calcium absorption from gut
increases calcium reabsorption from kidney
increases bone mineralisation
vitamin D receptor (VDR) binding
apoptosis*

VITAMIN D – ACTION OF CALCITRIOL

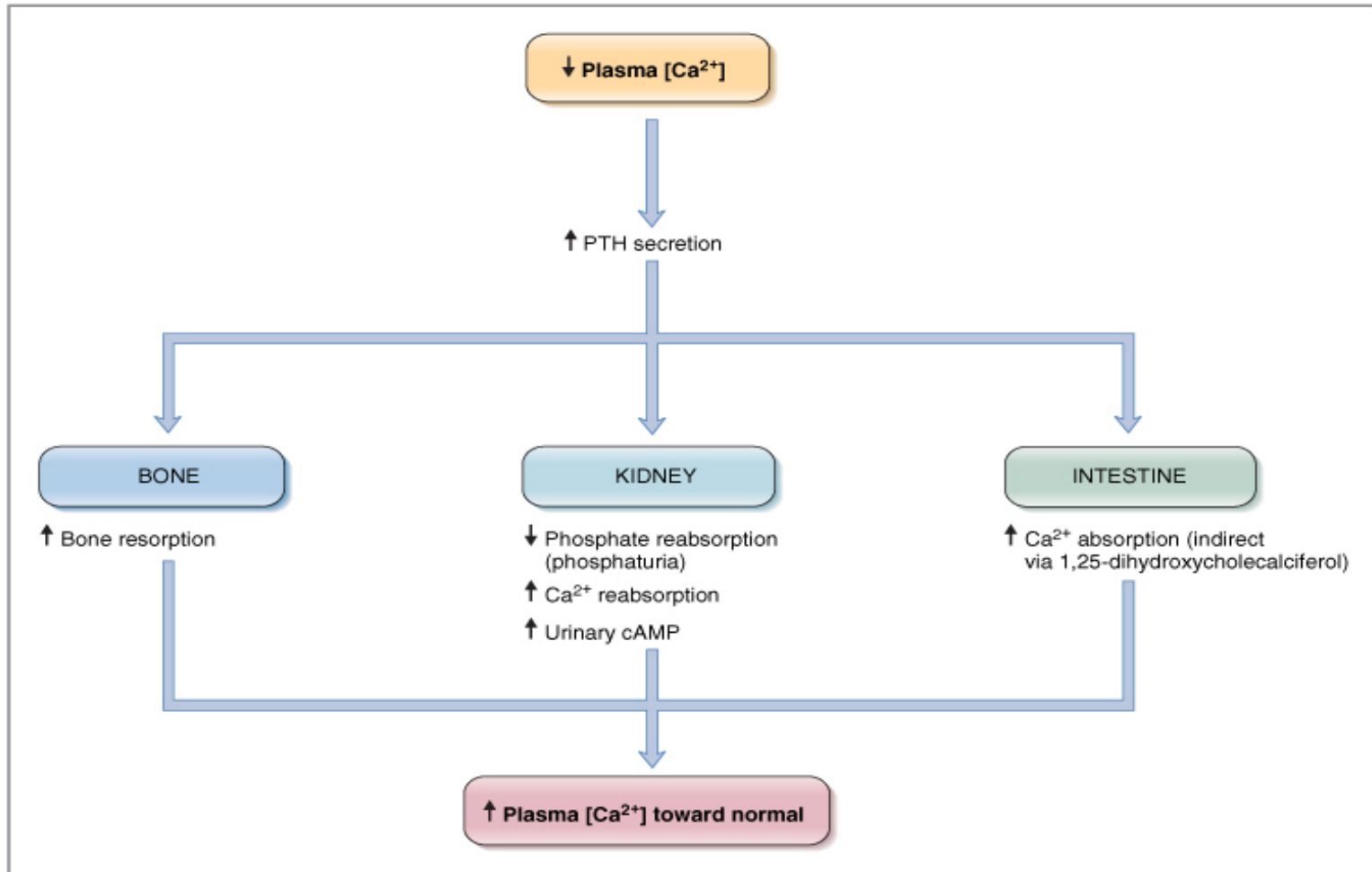


- Increases the intestinal absorption of calcium and phosphate by increased synthesis of calcium binding protein (calbinding D28k)

- Mineralization of bone at low doses
- Mobilization of calcium from bone at high doses

- Increased reabsorption of calcium and phosphorus
- Decreased excretion of calcium and phosphorus

Parathyroid Hormone (PTH)



© Elsevier. Costanzo: Physiology 3E www.studentconsult.com

Add to My Slides Go to My Slides

Figure 9-37 Regulation of PTH secretion and PTH actions on bone, kidney, and intestine. cAMP, Cyclic adenosine^R monophosphate; PTH, parathyroid hormone.

Calcitonin Hormone

b Factors That Decrease Blood Calcium Levels

These responses are triggered when plasma calcium ion concentrations rise above 11 mg/dL.

High Calcium Ion Levels in Plasma
(above 11 mg/dL)

Thyroid Gland Response

Parafollicular cells (C cells) in the thyroid gland secrete calcitonin.

Calcitonin

Bone Response

Osteoclasts inhibited while osteoblasts continue to lock calcium ions in bone matrix



Intestinal Response

Rate of intestinal absorption decreases



less
calcitriol

Kidney Response

Kidneys allow calcium loss



Calcium absorbed slowly

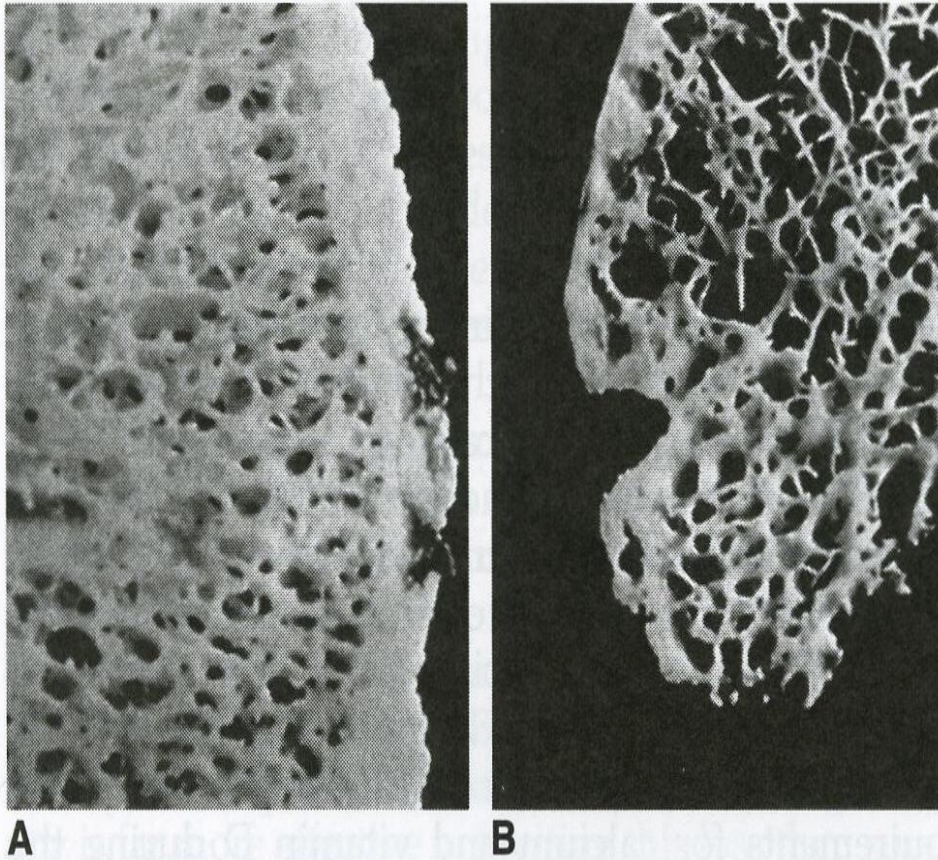
Calcium excreted

Calcium stored

↓ Ca²⁺
levels in
bloodstream

Increased calcium
loss in urine

Osteoporosis



- Difference between normal bone (**A**) and osteoporotic bone (**B**).

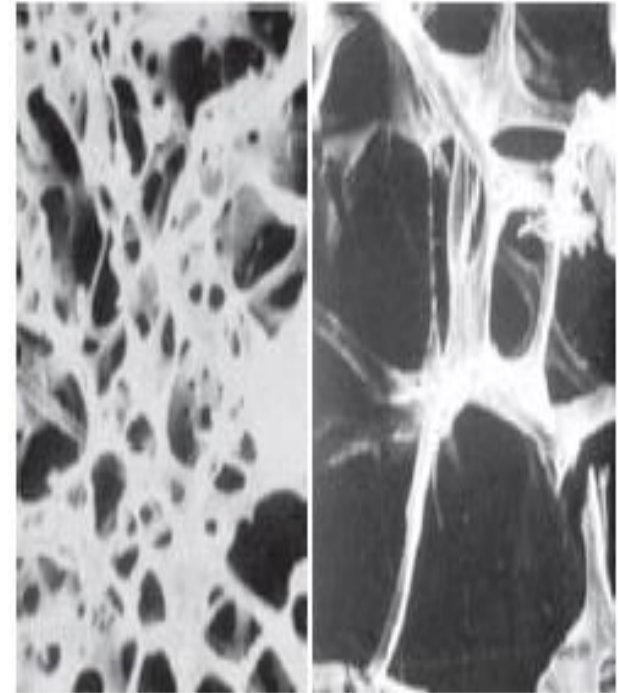


FIGURE 21-11 Normal trabecular bone (left) compared with trabecular bone from a patient with osteoporosis (right). The loss of mass in osteoporosis leaves bones more susceptible to breakage.

Osteoporosis

- ❑ **Osteoporosis:** means reduced bone density and mass
- ❑ Is caused by a relative excess of osteoclastic function. Loss of bone matrix is marked. Matrix and mineral are both lost and there is a loss of bone mass. Due to :
 - ❑ Lack of physical stress
 - ❑ Malnutrition, lack of vitamin C
 - ❑ Old age, Postmenopausal lack of estrogen
 - ❑ Cushing's syndrome.

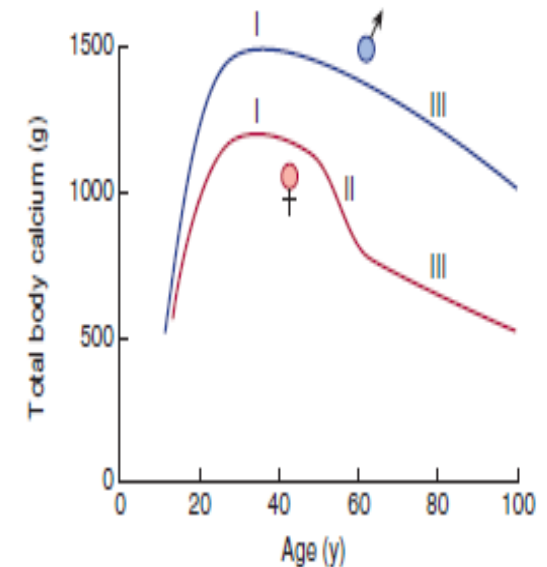


FIGURE 21-12 Total body calcium, an index of bone mass, at various ages in men and women. Note the rapid increase to young adult levels (phase I) followed by the steady loss of bone with advancing age in both sexes (phase III) and the superimposed rapid loss in women after menopause (phase II). (Reproduced with permission from Evans TG, Williams TF (eds): *Oxford Textbook of Geriatric Medicine*. Oxford University Press; 1992.)

Complications of Osteoporosis

- ❑ The incidence of fractures is increased particularly in the distal forearm (Colles fracture), vertebral body, and hip. These areas have a high content of trabecular bone, which is more active metabolically, it is lost more rapidly.
- ❑ Fractures of the vertebrae with kyphosis produces “widow’s hump” in elderly women with osteoporosis.
- ❑ Fractures of the hip in elderly are associated with a mortality rate of 12–20%, and half of those who survive require prolonged expensive care.
- ❑ Increased intake of calcium and moderate exercise may help prevent or slow the progress of osteoporosis,

Thank You