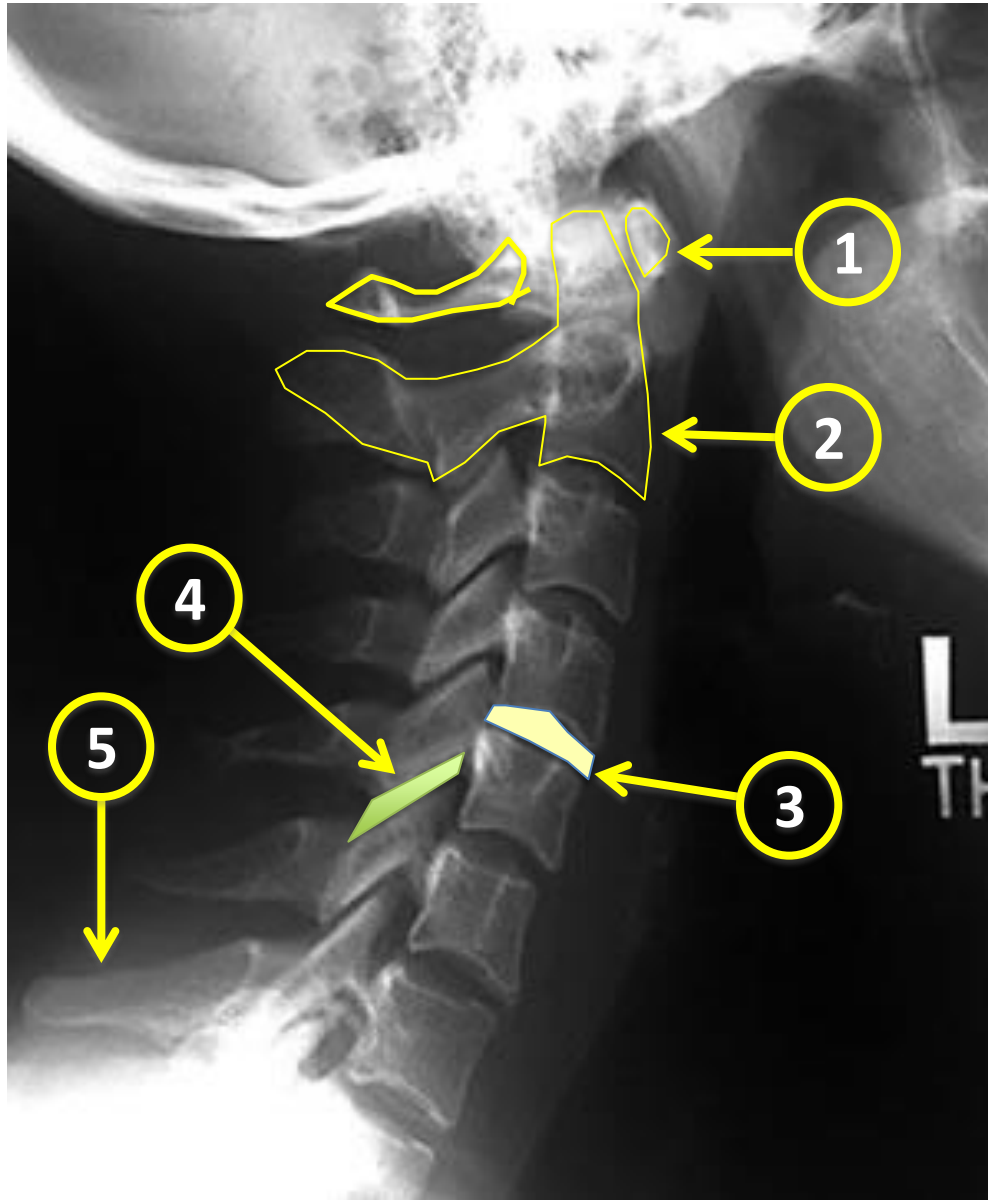
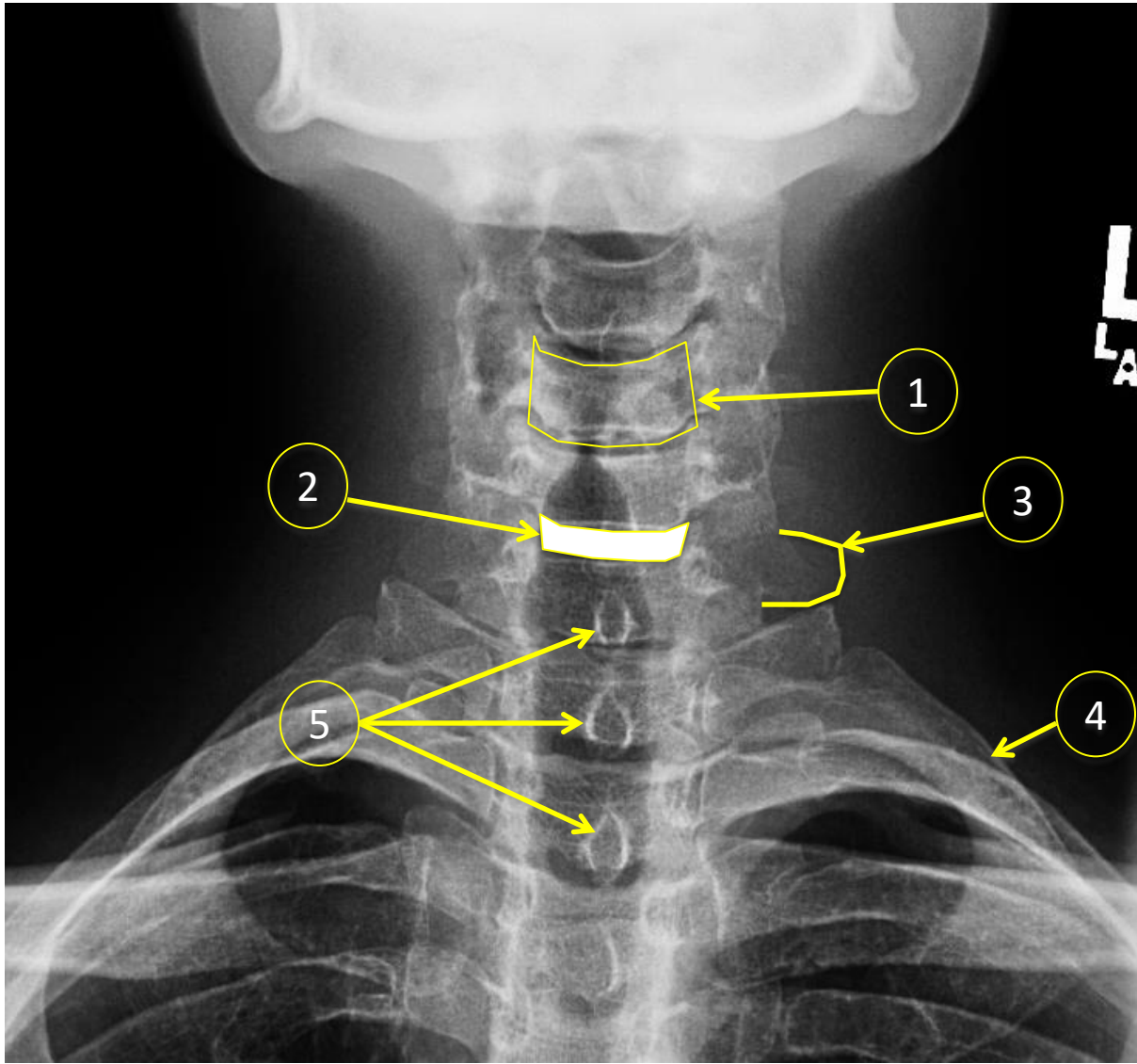


RADIOLOGICAL ANATOMY OF THE SPINE

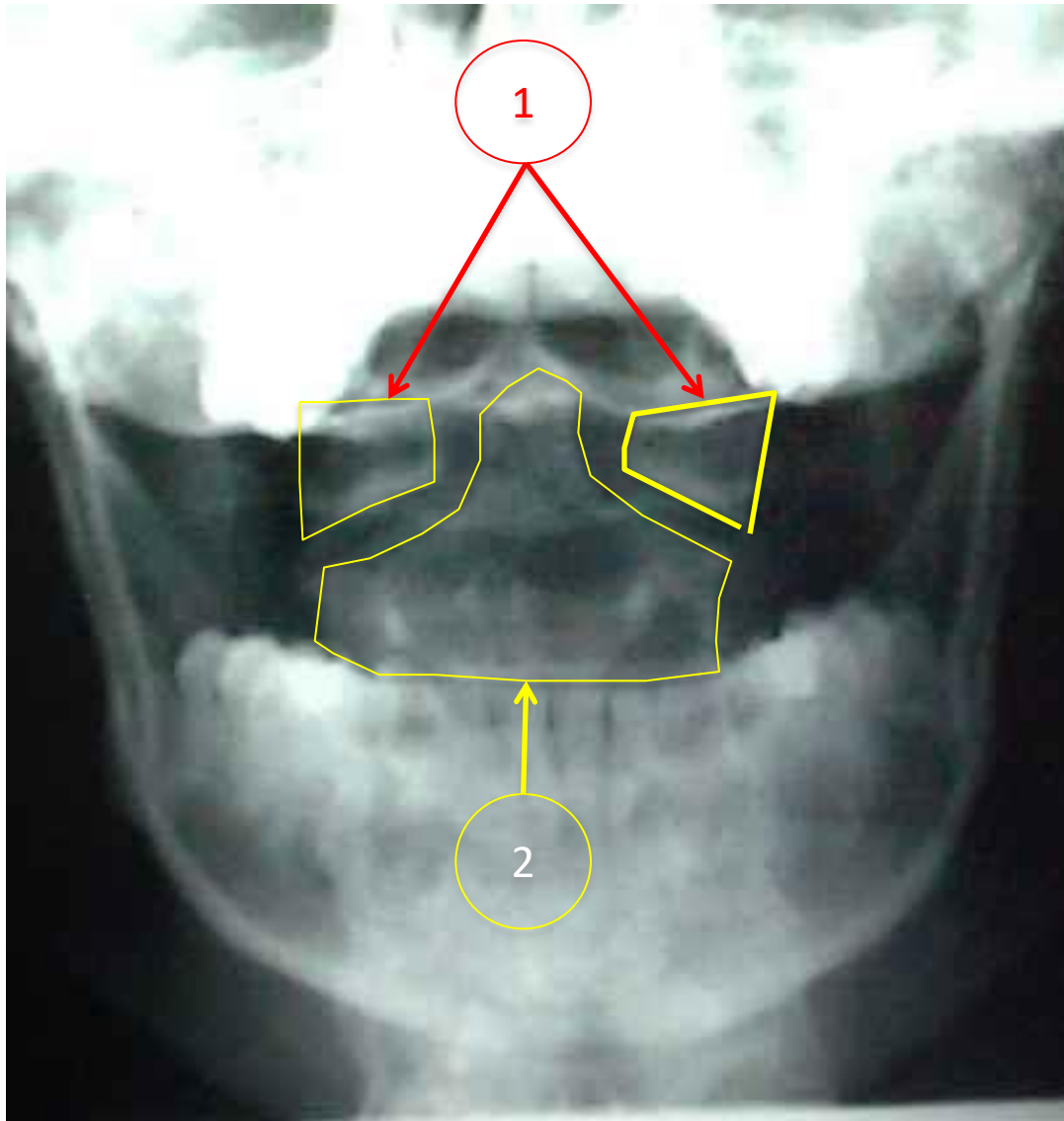
Cervical spine



1. C1- atlas
2. C2-axis
3. Intervertebral disc
4. Facet joint
5. Spinous process



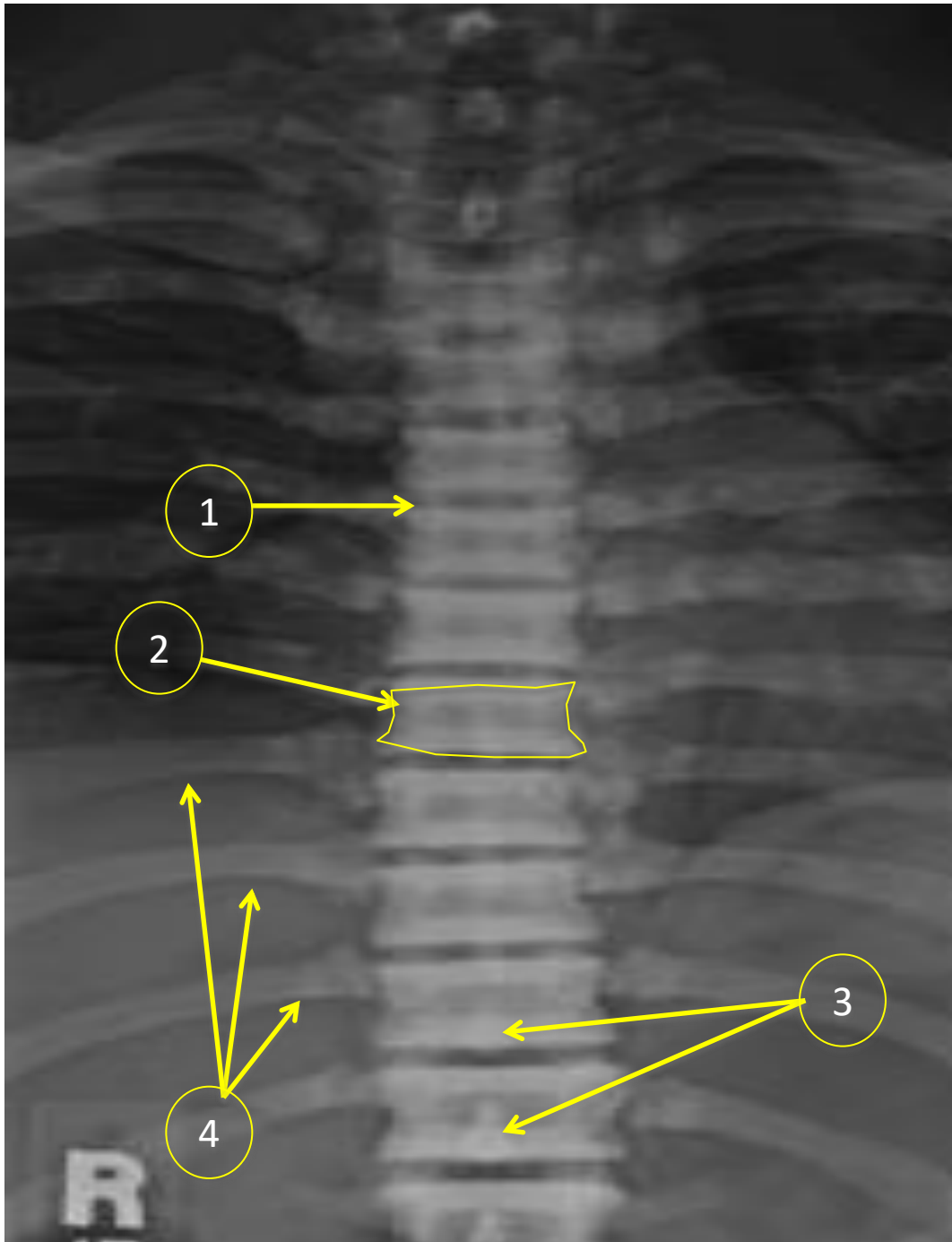
1. Vertebral body
2. Intervertebral disc
3. Transverse process
4. 1st rib
5. Spinous process



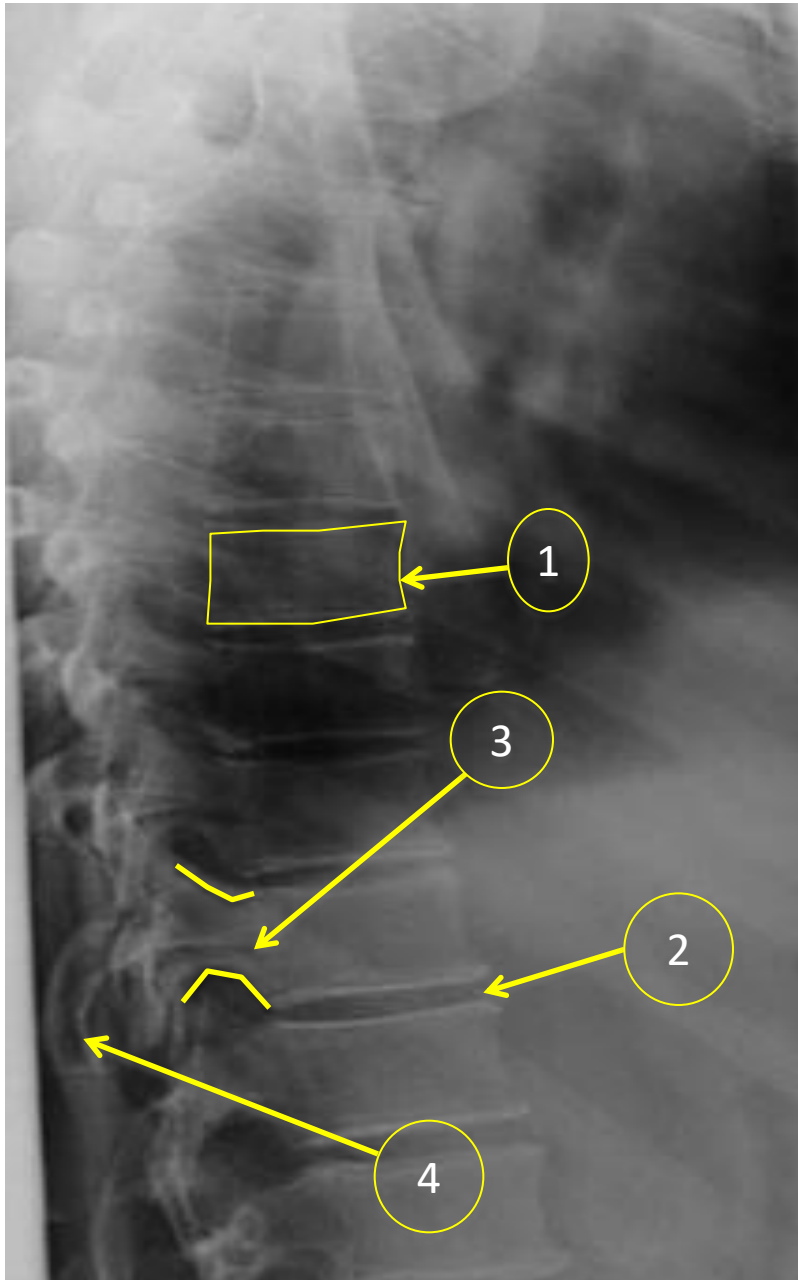
Open mouth
view:

1. C1
2. C2

Thoracic spine

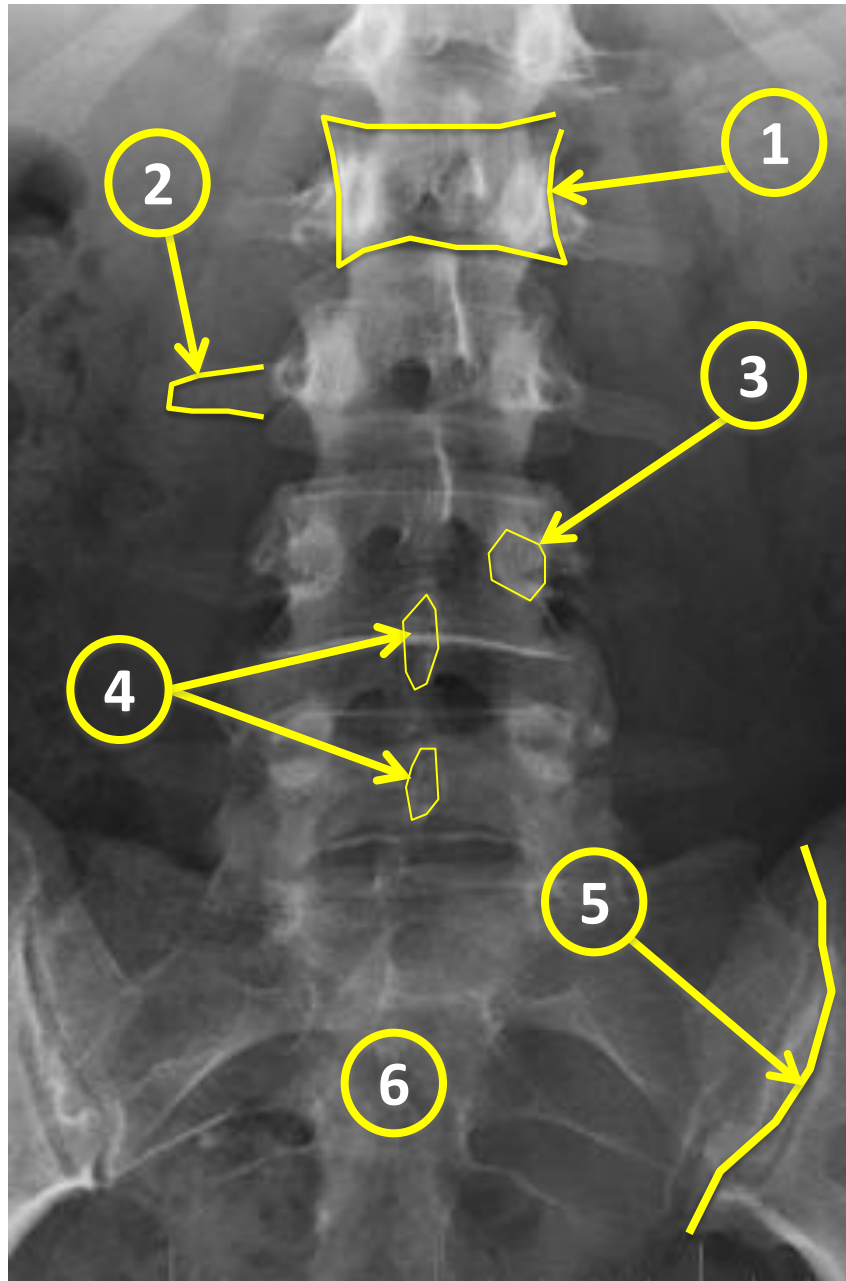


1. Vertebral body
2. intervertebral disc
3. Spinous process
4. ribs

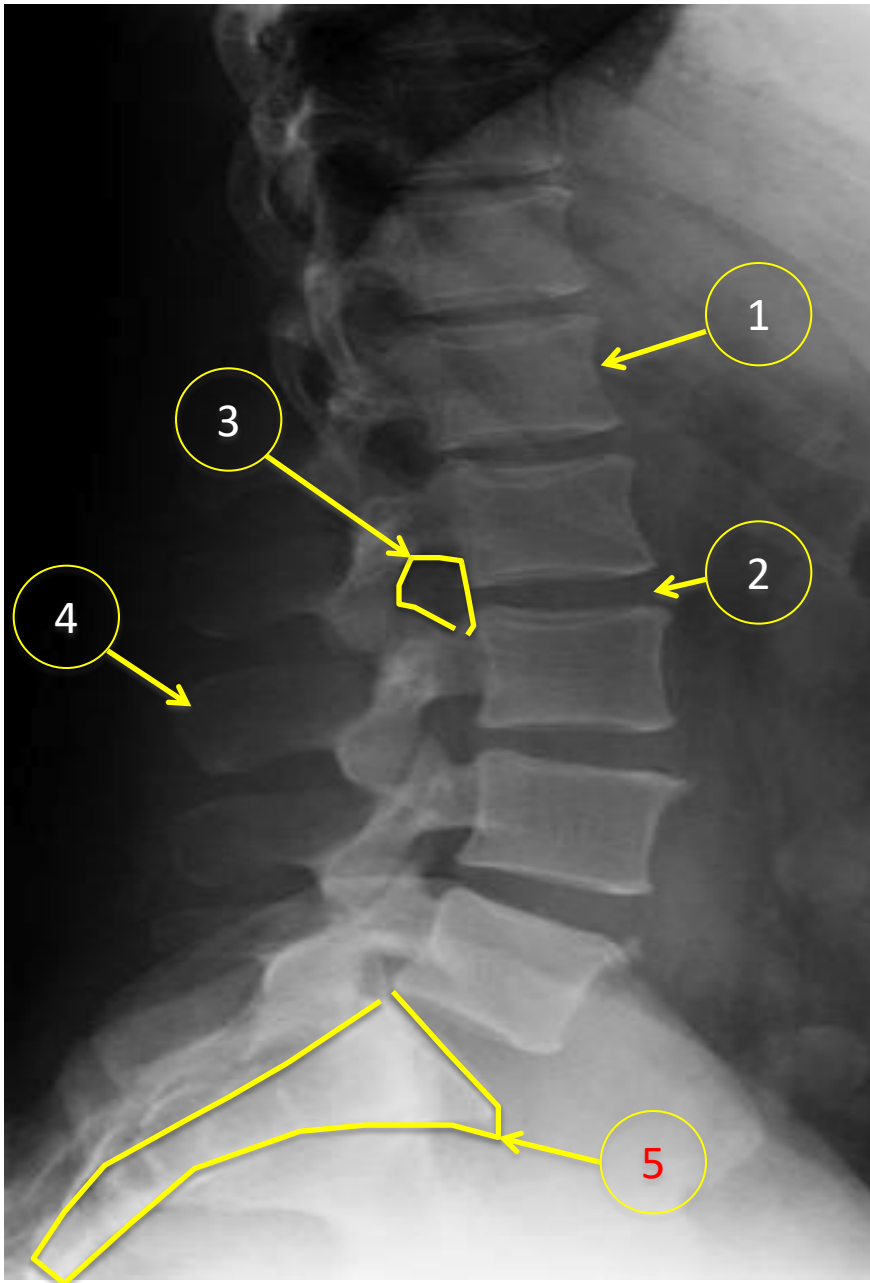


1. Vertebral body
2. Intervertebral disc
3. Pedicle
4. rib

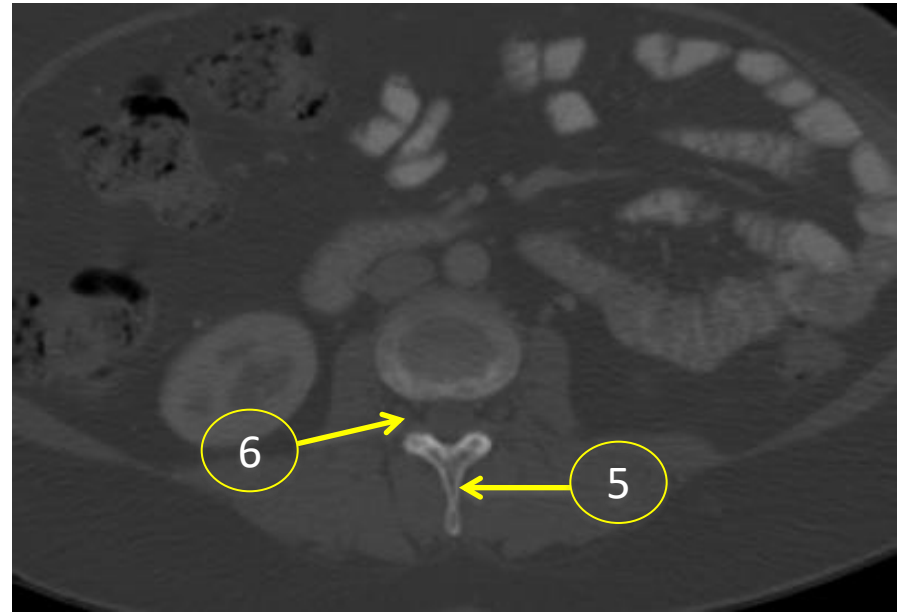
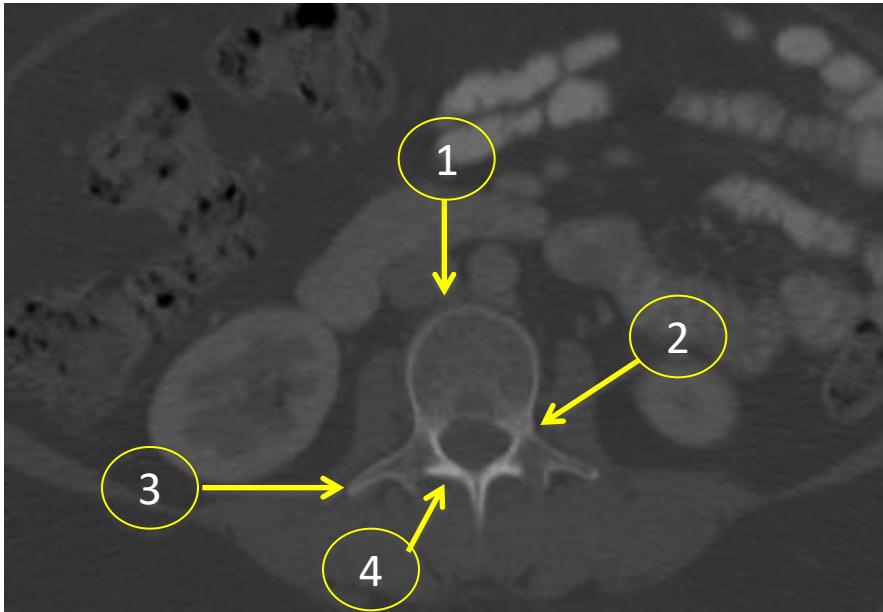
Lumbar spine



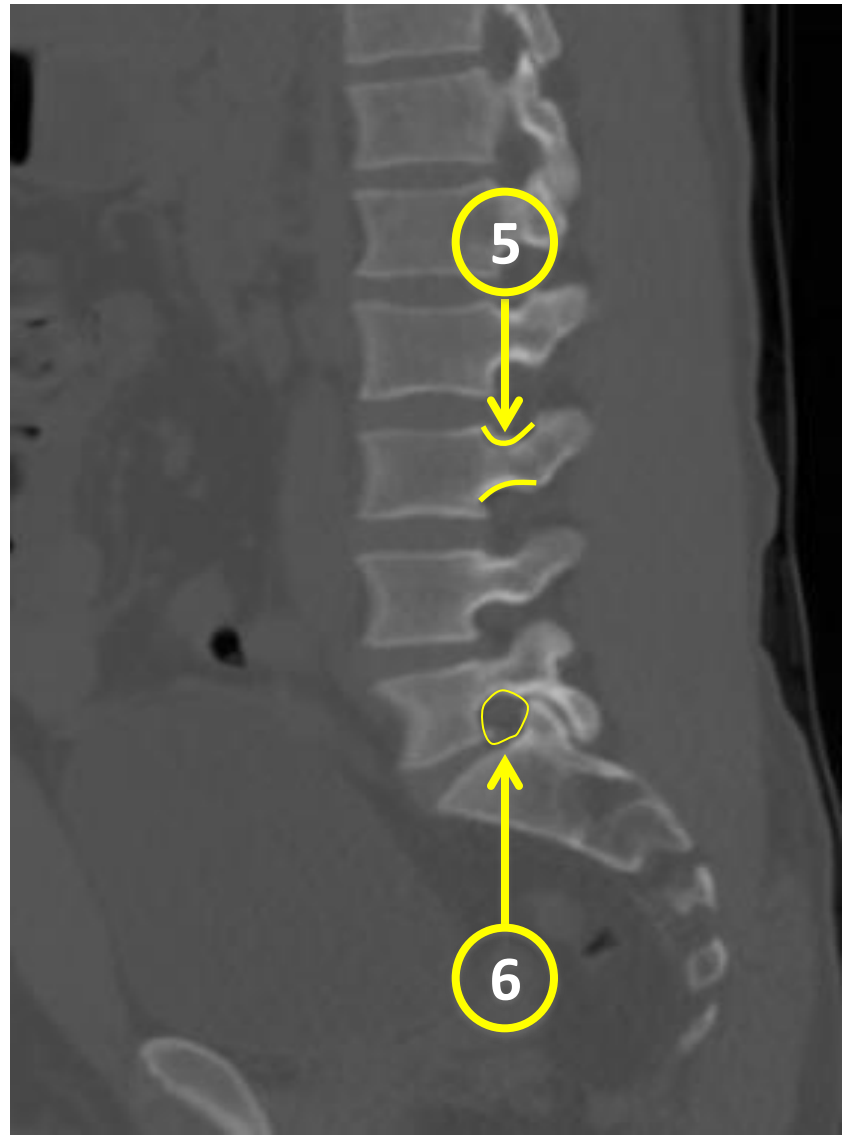
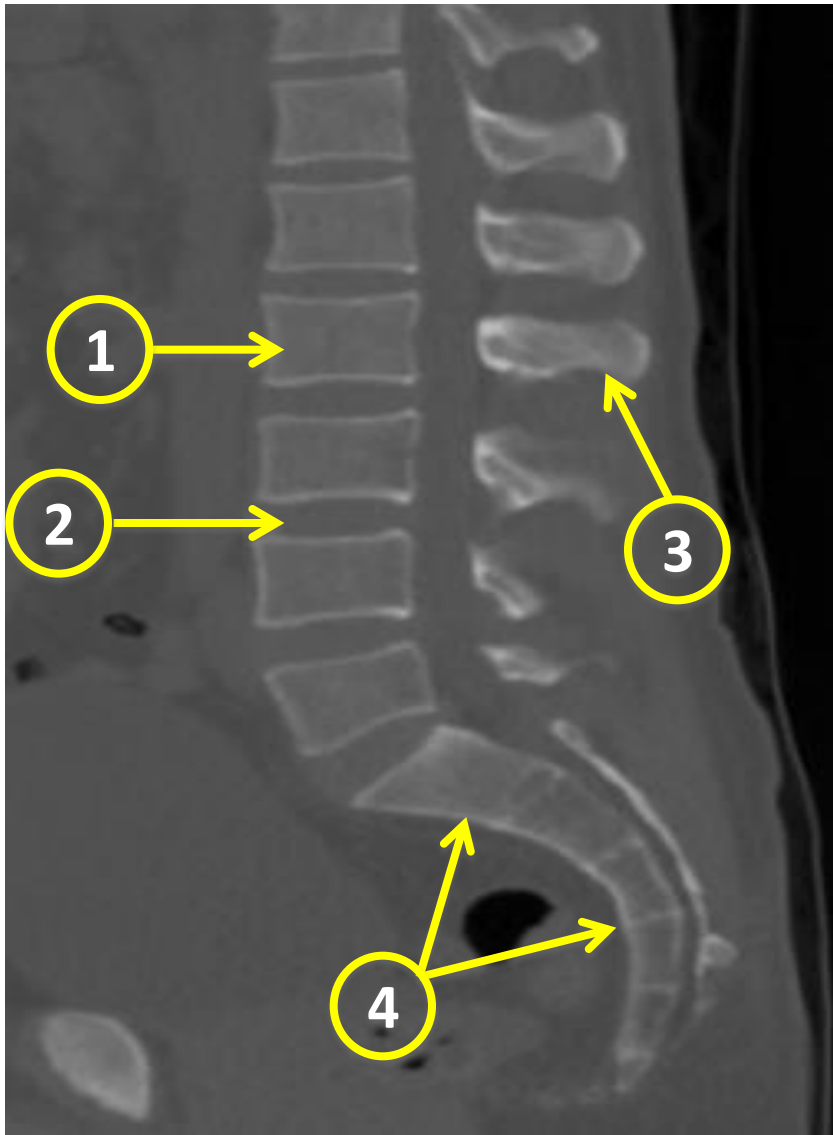
1. Vertebral body
2. Transverse process
3. Pedicle
4. Spinous process
5. Sacroiliac joint
6. sacrum



1. Vertebral body
2. Intervertebral disc
3. Neural foramen
4. Spinous process
5. sacrum



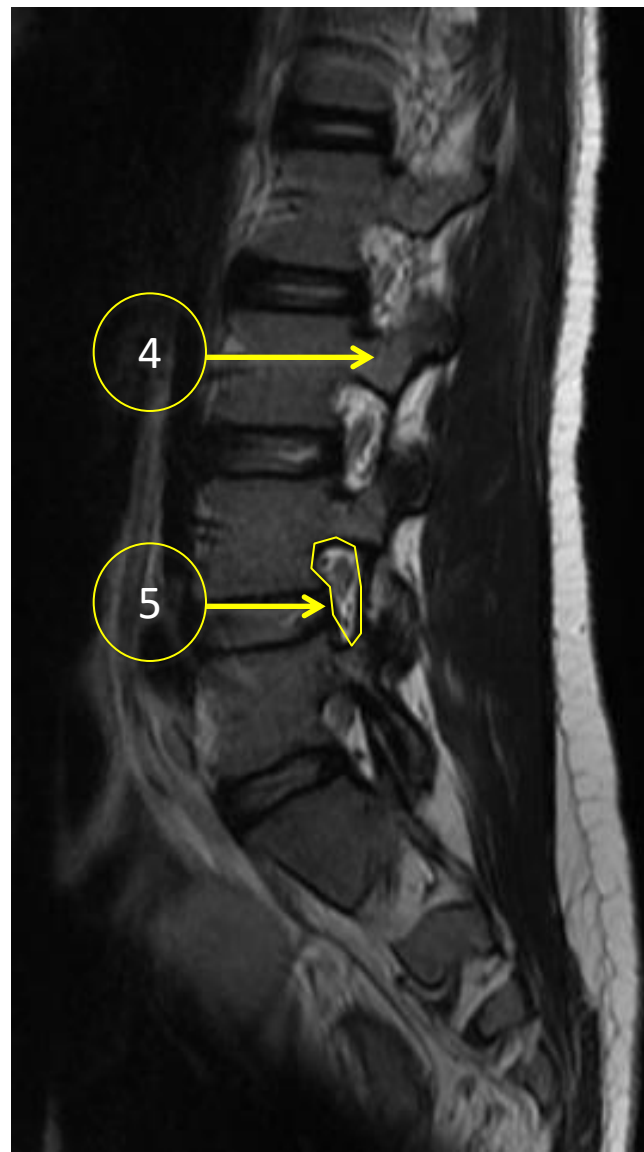
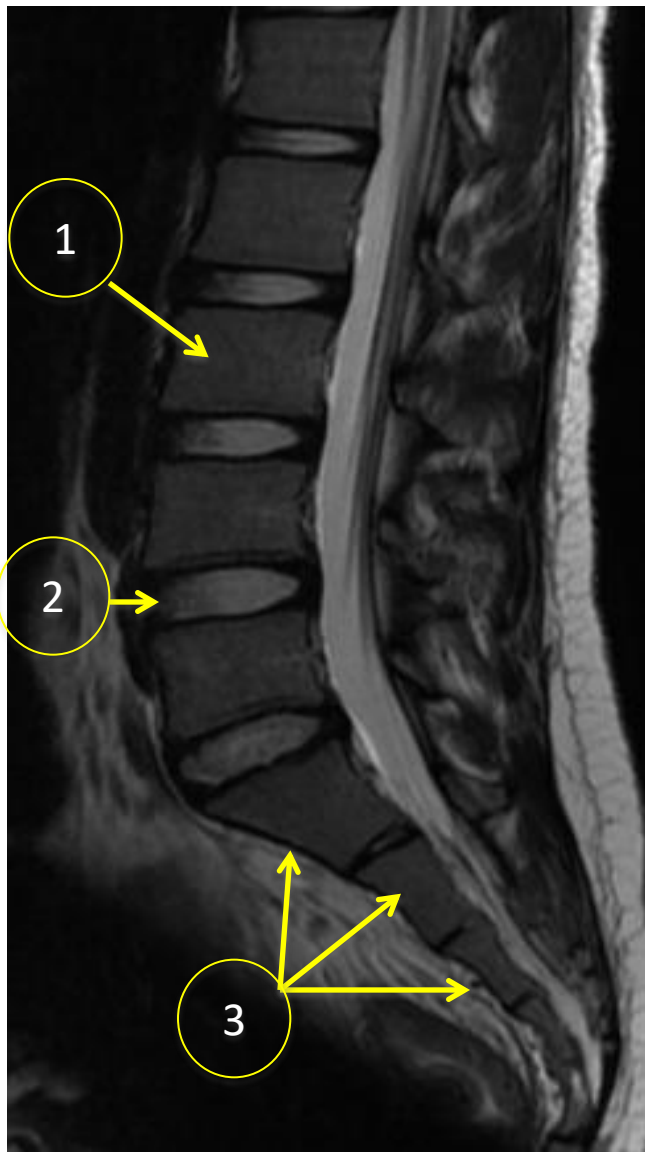
1. Vertebral body
2. Pedicle
3. Transversers process
4. Lamina
5. Spinous process
6. Neural foramen



1- Vertebral body
2- Intervertebral disc

3- Spinous process
4- sacrum

5- Pedicle
6- Neural foramen/canal



- 1. Vertebral body
- 2. Intervertebral disc
- 3. Sacrum
- 4. Pedicle
- 5. Neural foramina