

RADIOLOGY ANATOMY OF UPPER LIMB



DR. RESHAID ALJURAYYAN MD

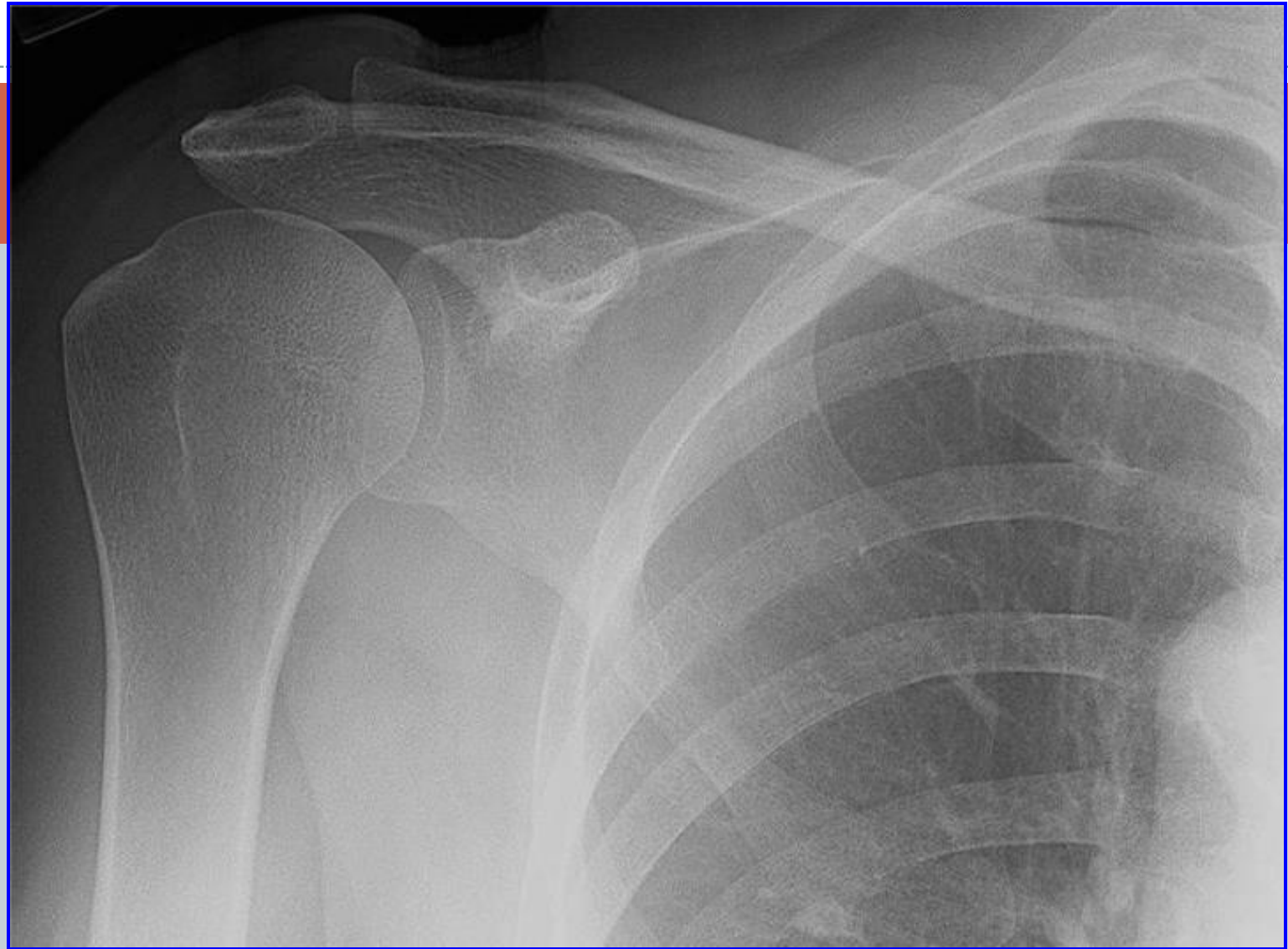
| Modality | BONE | SOFT TISSUE |
|----------|-------|-------------|
| X-RAY | ++++ | -- |
| CT scan | +++++ | ++ |
| MRI | ++ | +++++ |

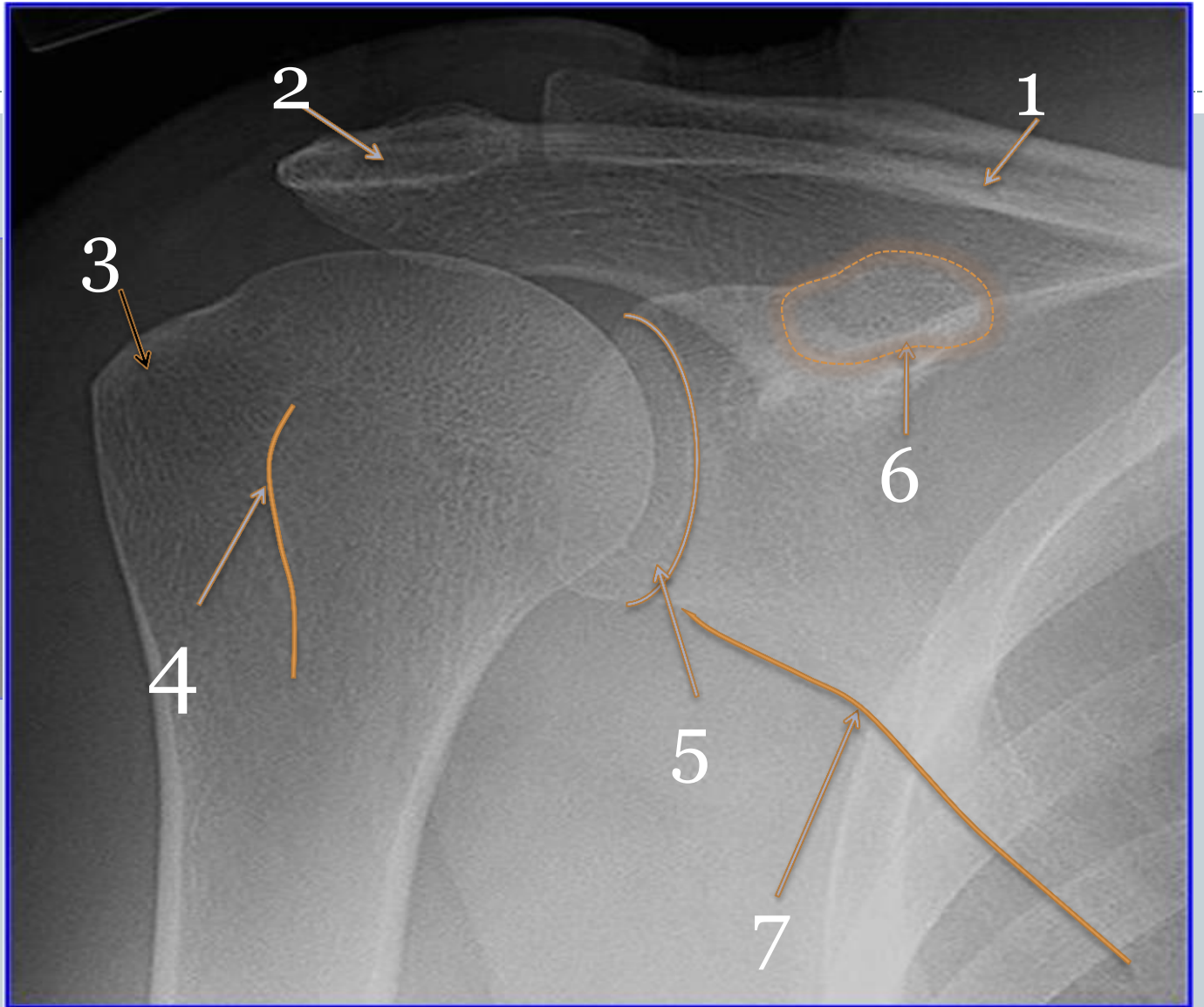


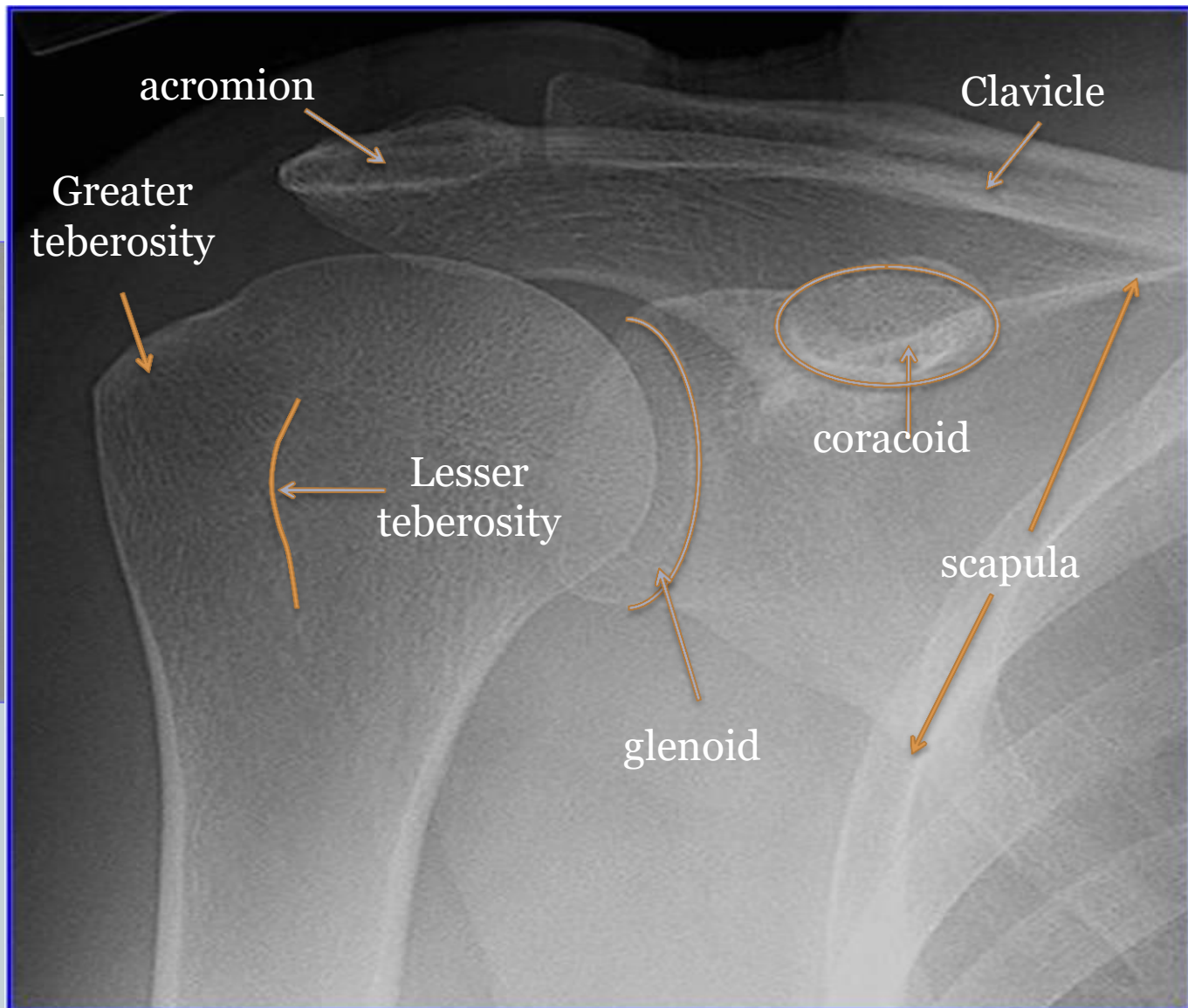
SHOULDER



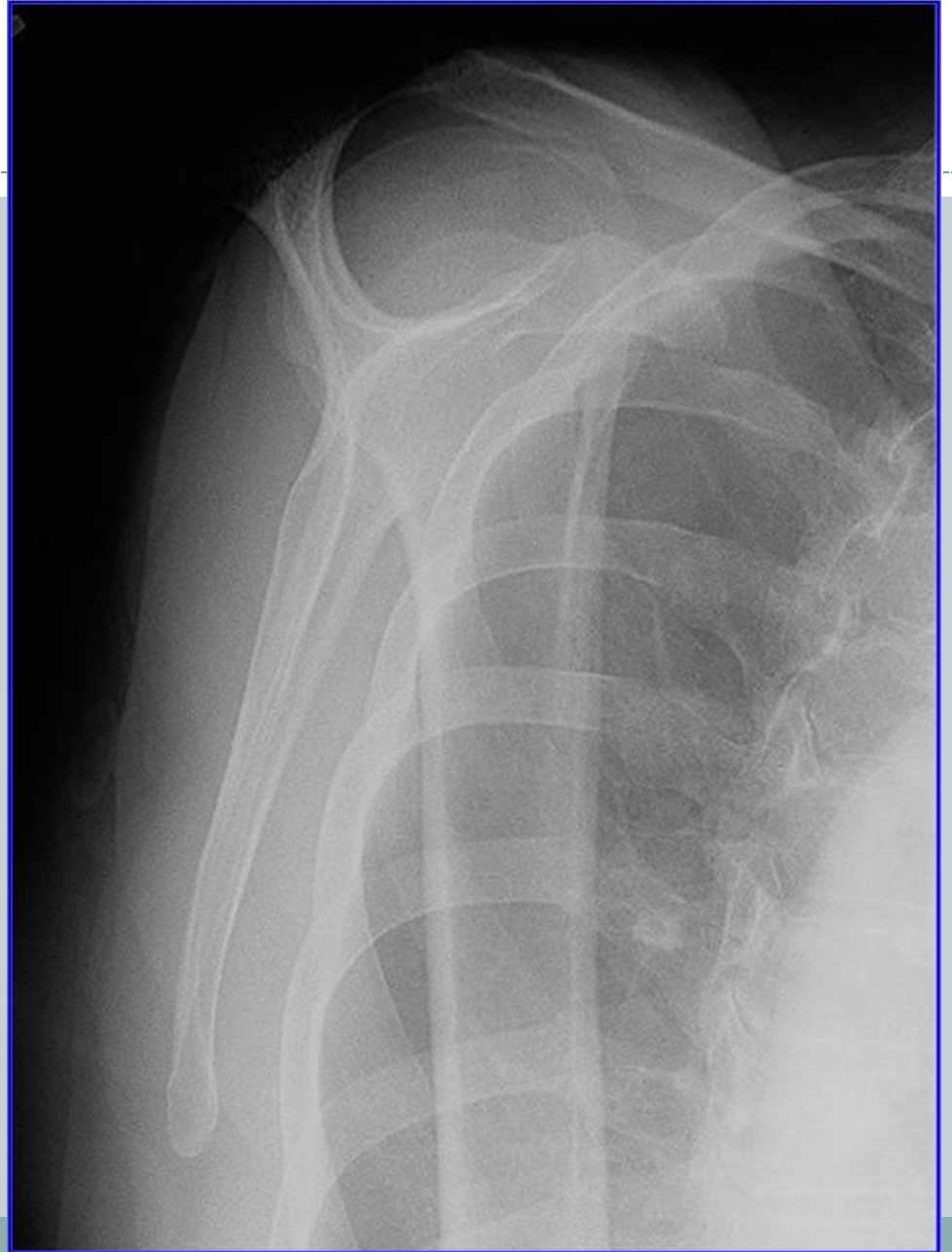
X-RAY



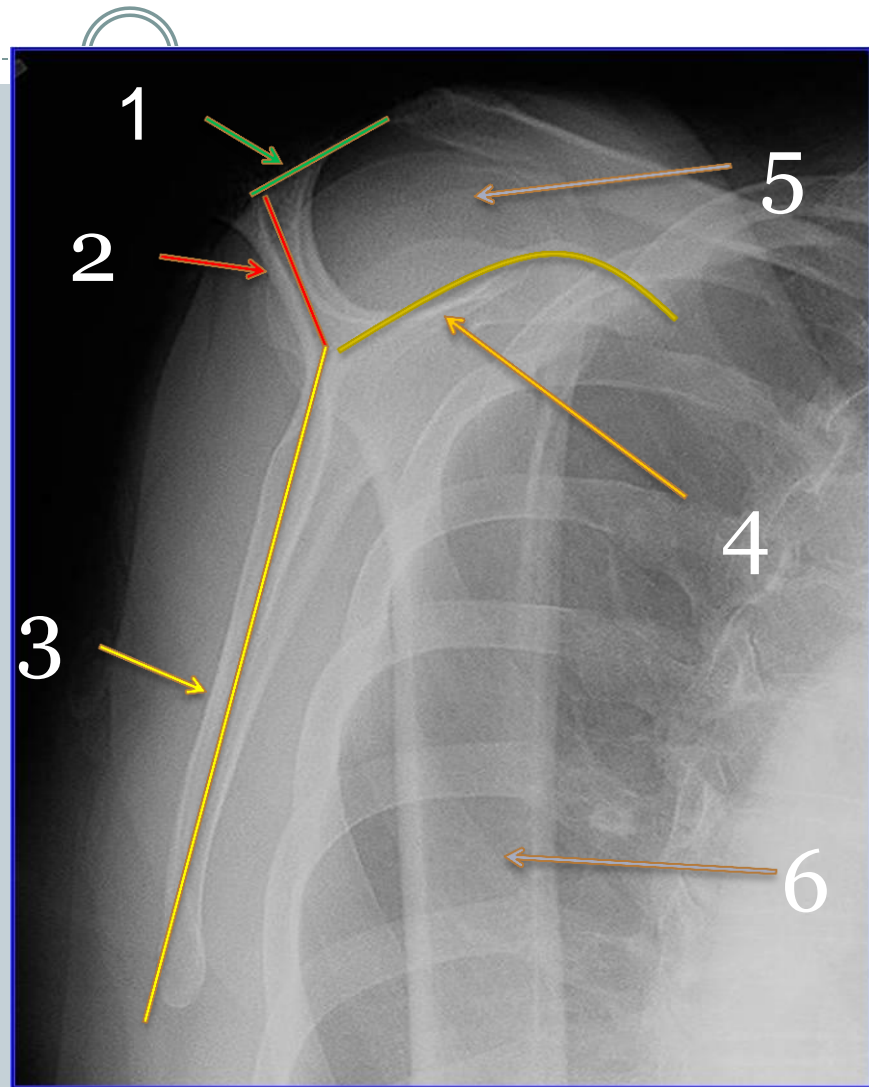




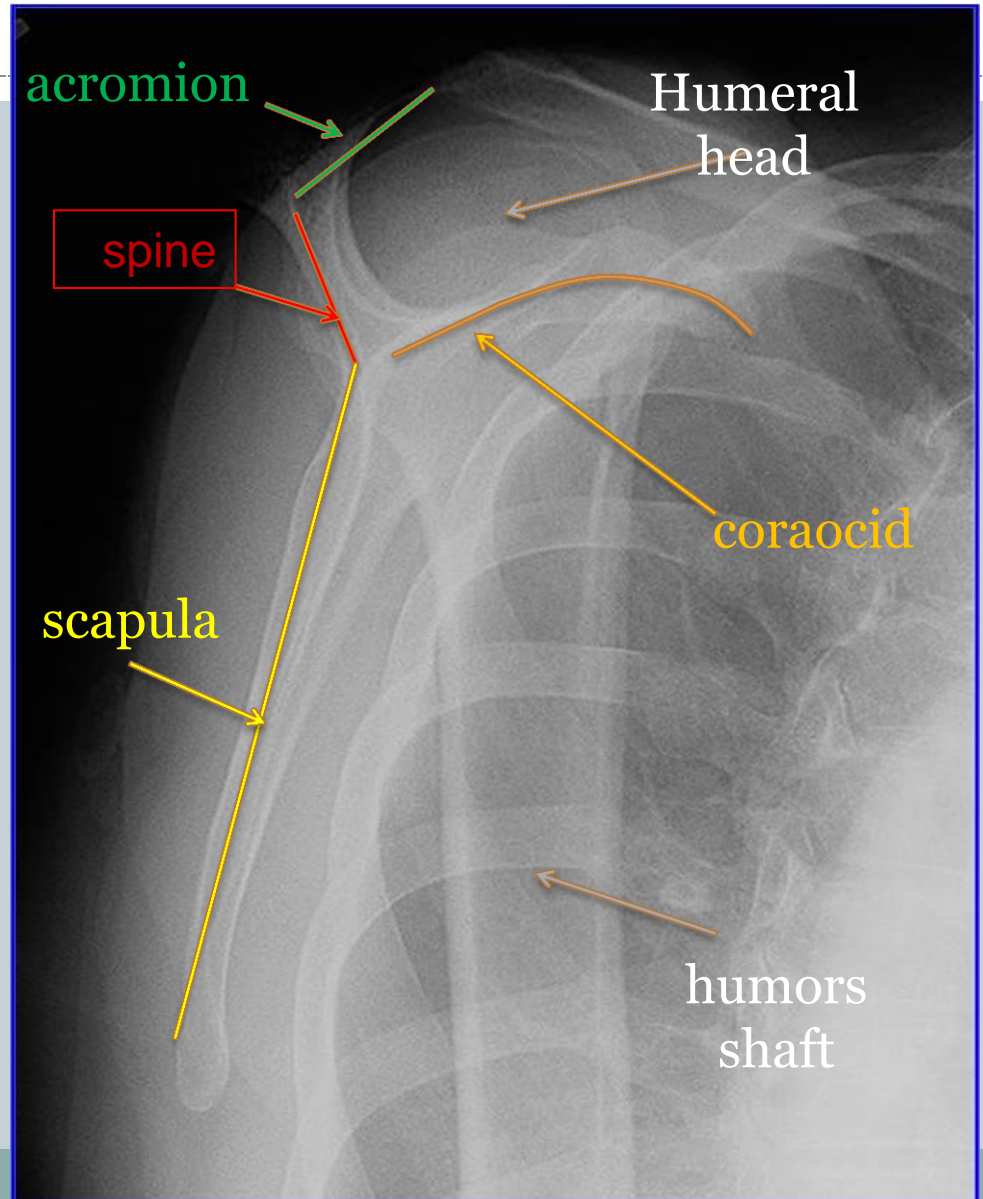
Y view



Y view



Y view

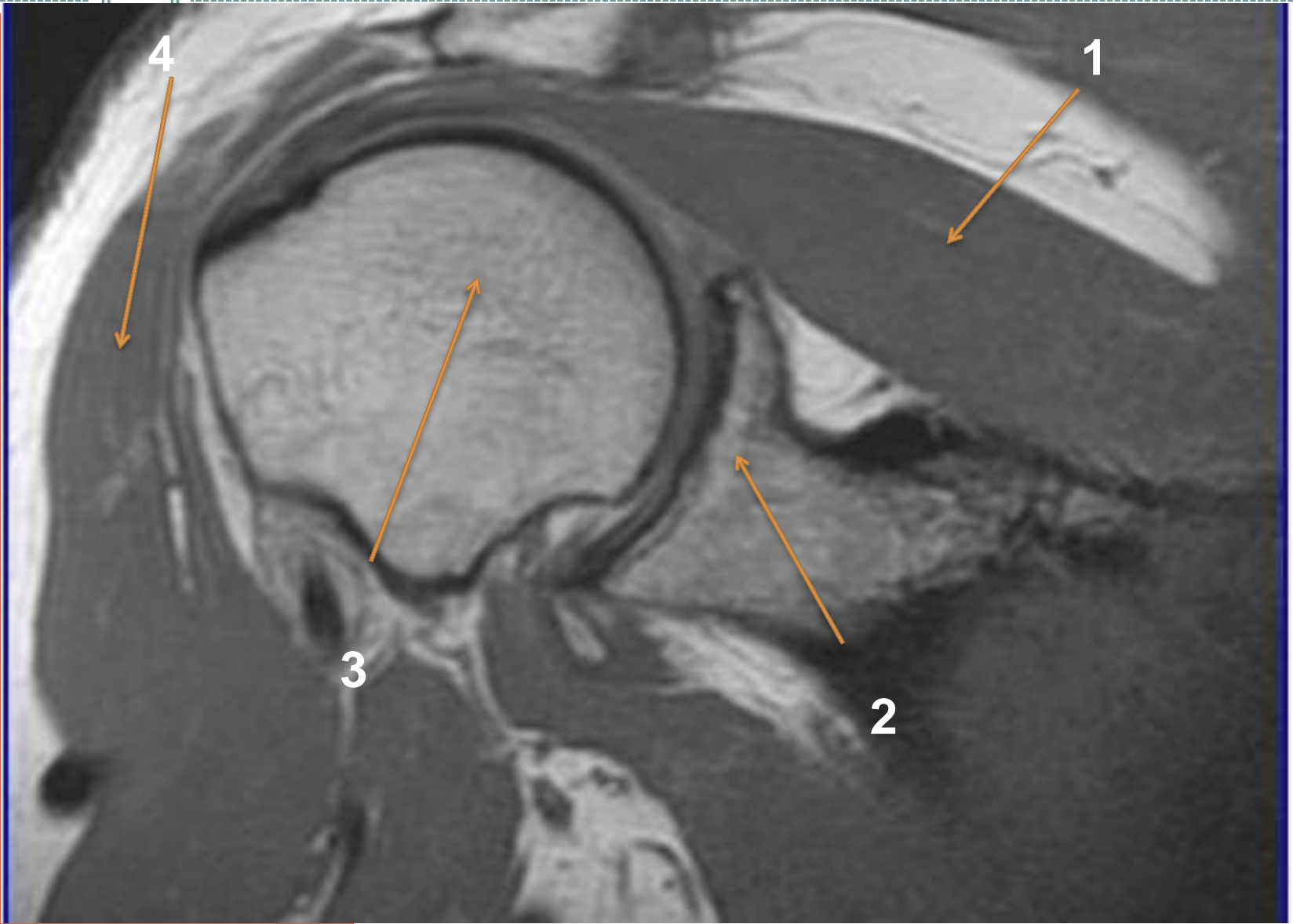


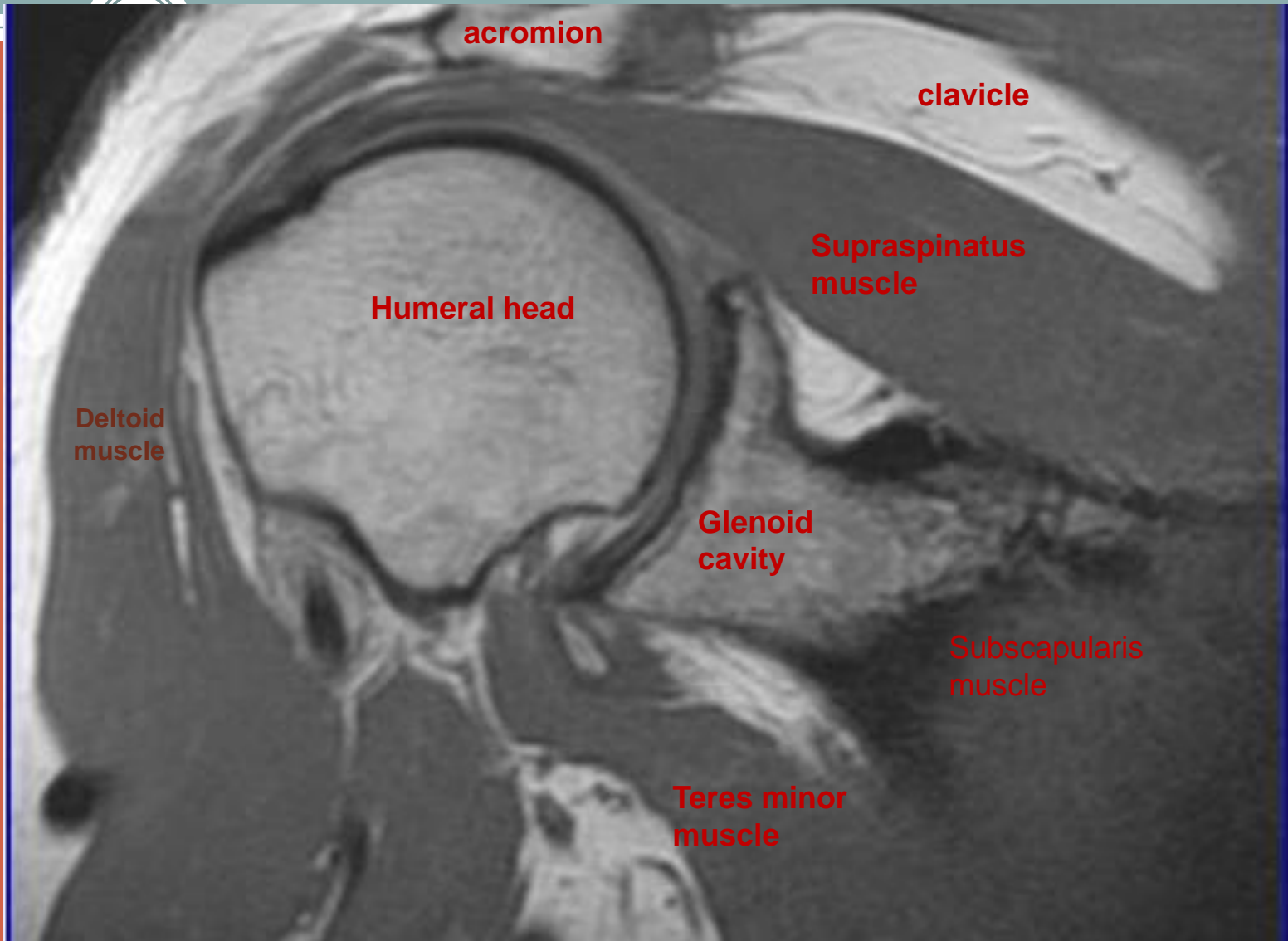


**Humerus
fracture**



MIRI





acromion

clavicle

**Supraspinatus
muscle**

Humeral head

**Deltoid
muscle**

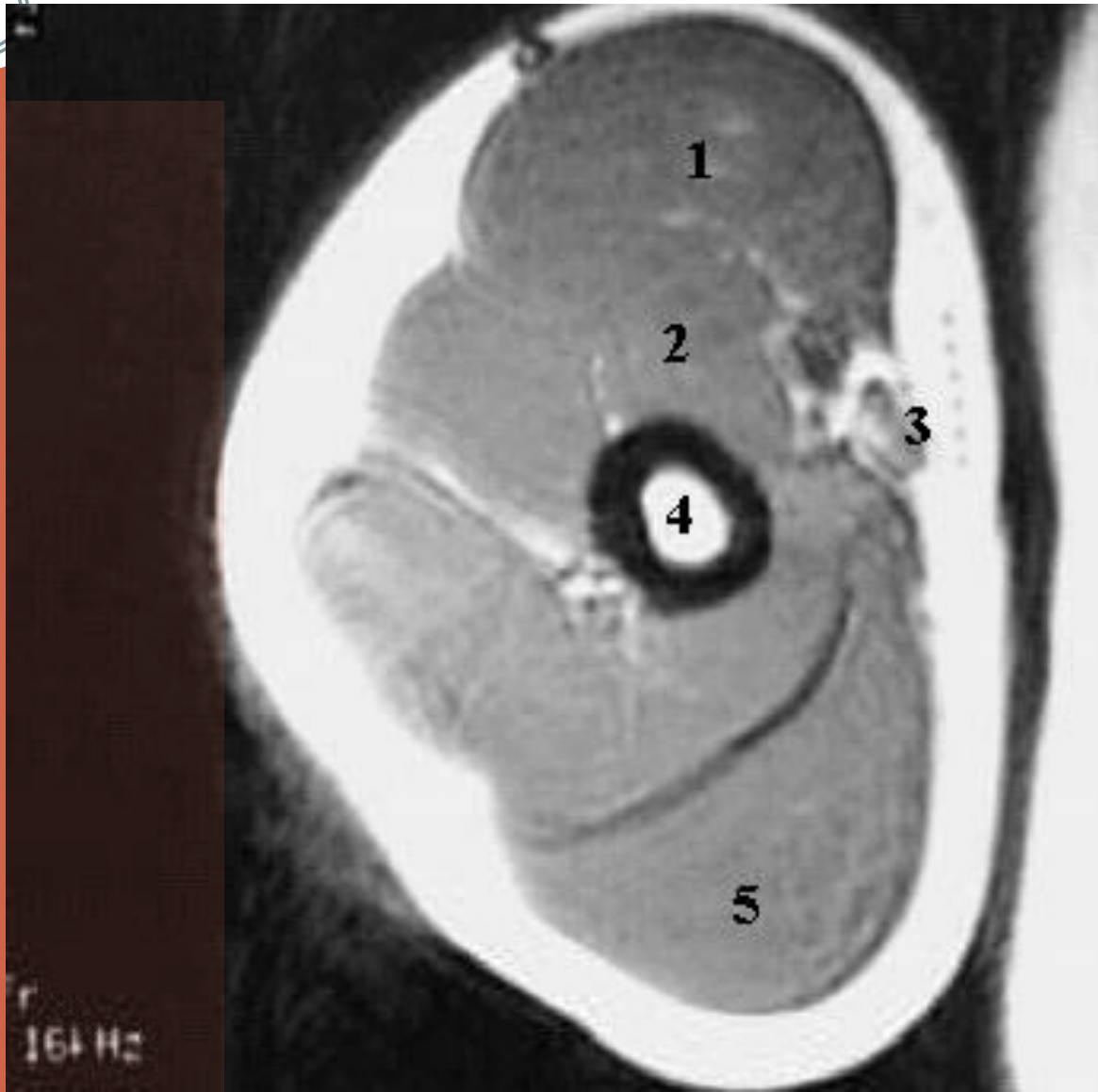
**Glenoid
cavity**

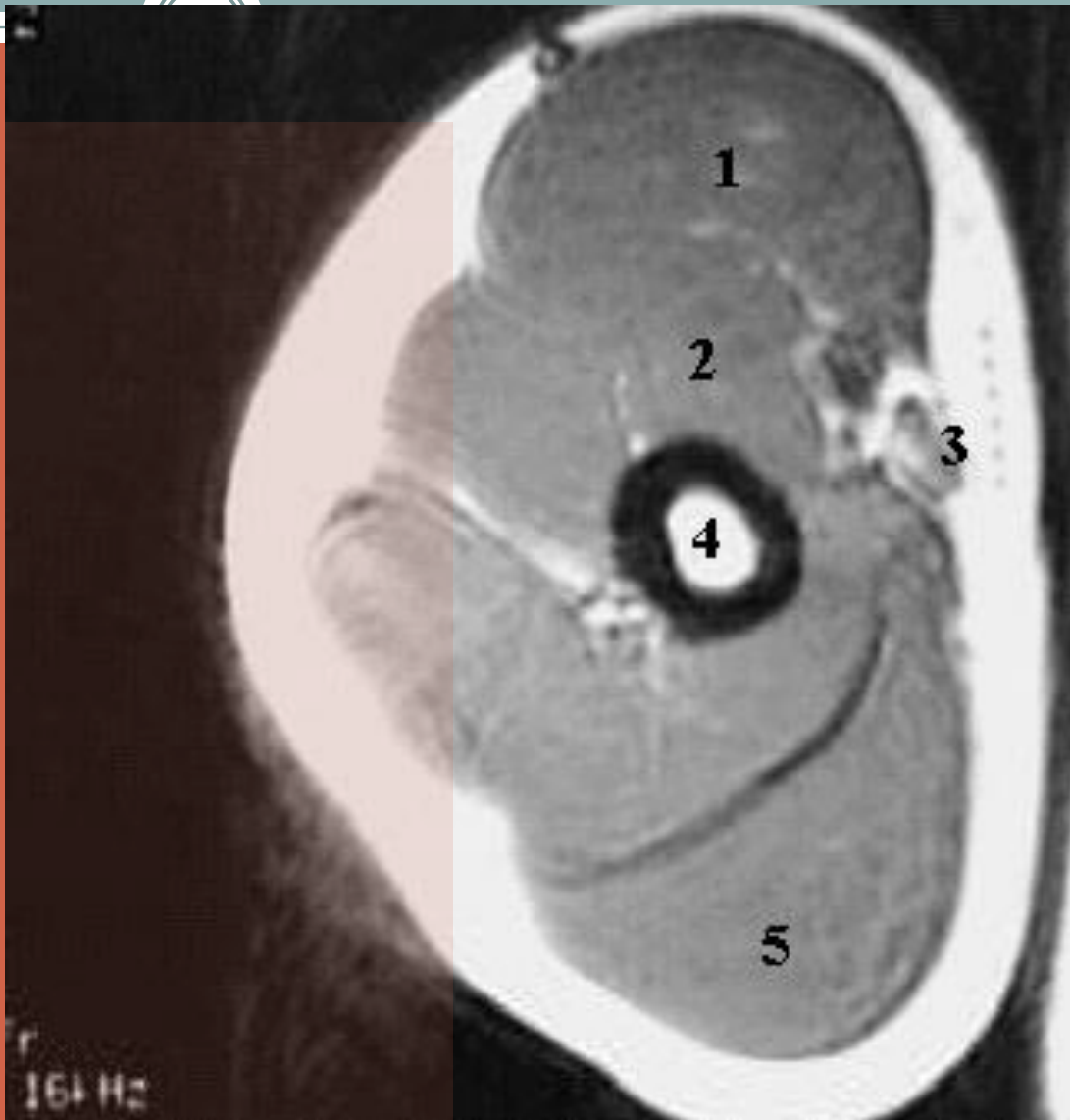
**Subscapularis
muscle**

**Teres minor
muscle**

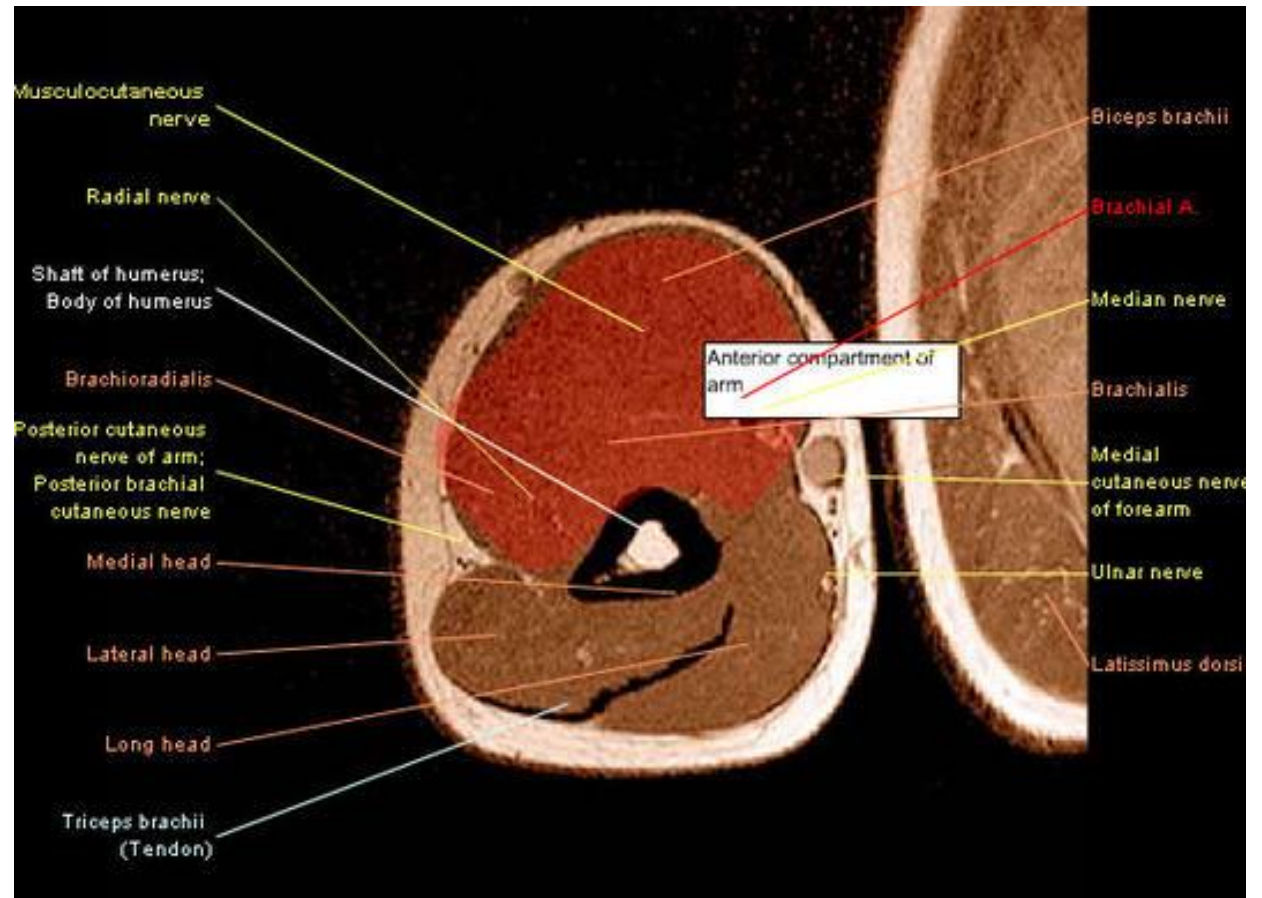


ARM MRI





- 1-Biceps Muscle.
- 2-Brachialis Muscle. ○
- 3-Brachial Artery.
- 4-Humerus. ○
- 5-Triceps Muscle



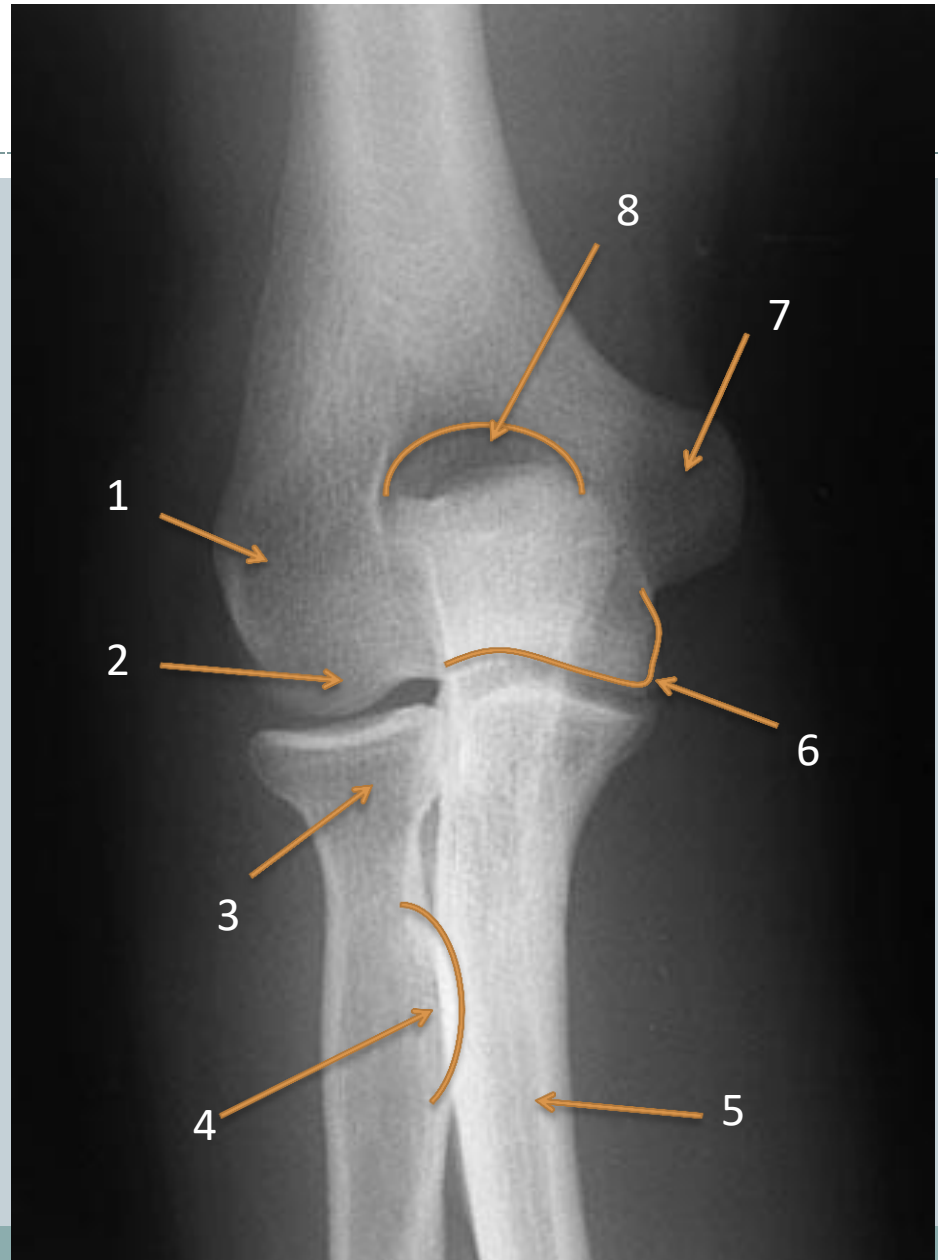


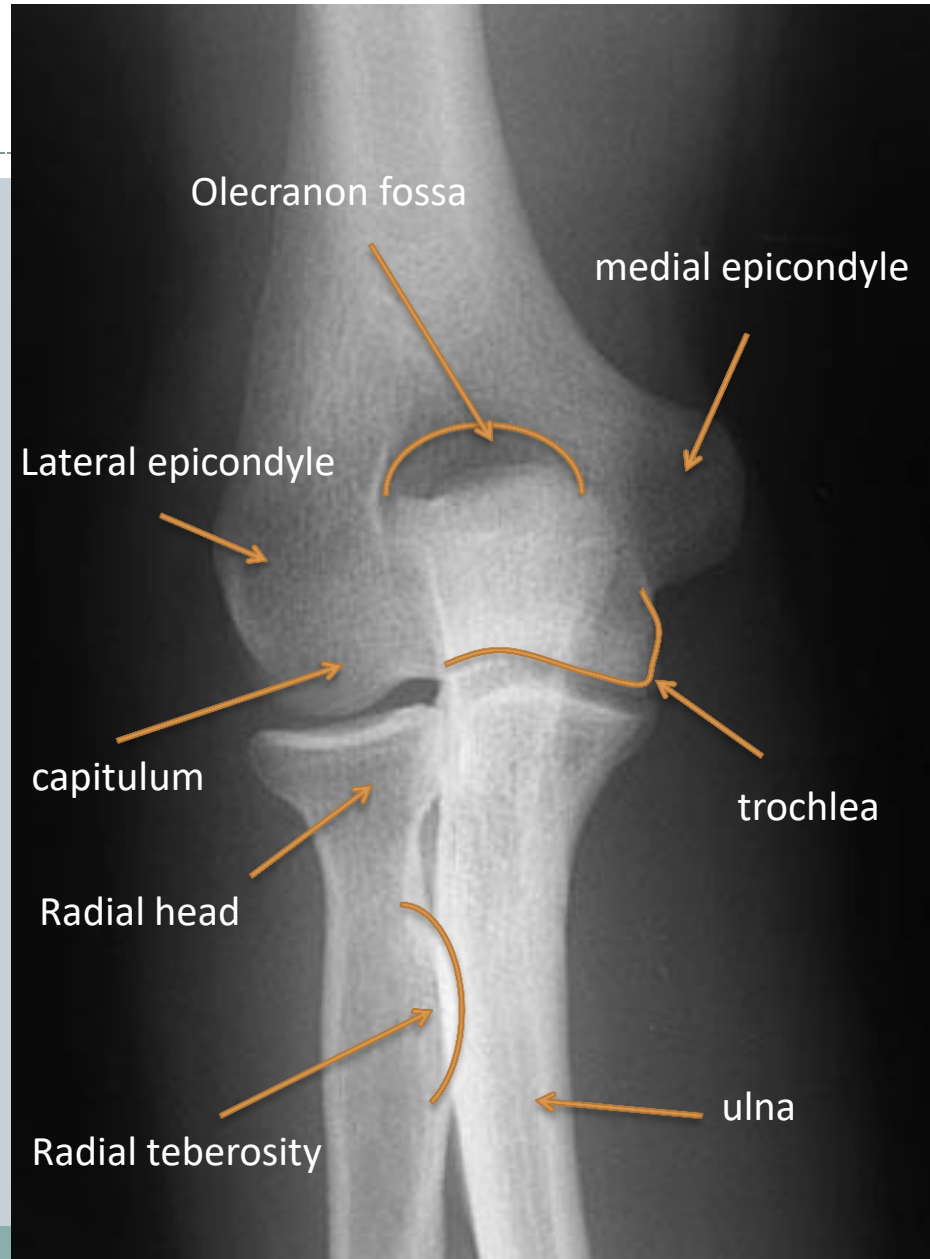
ELBOW



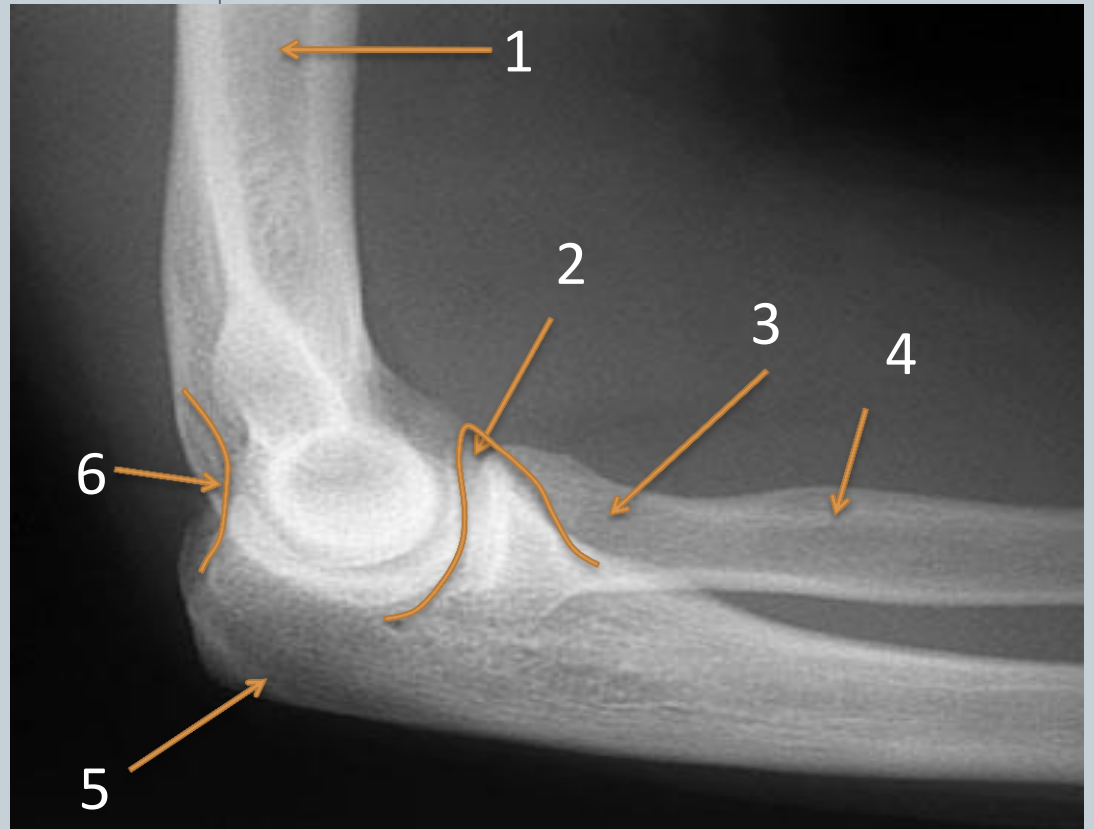
X RAY

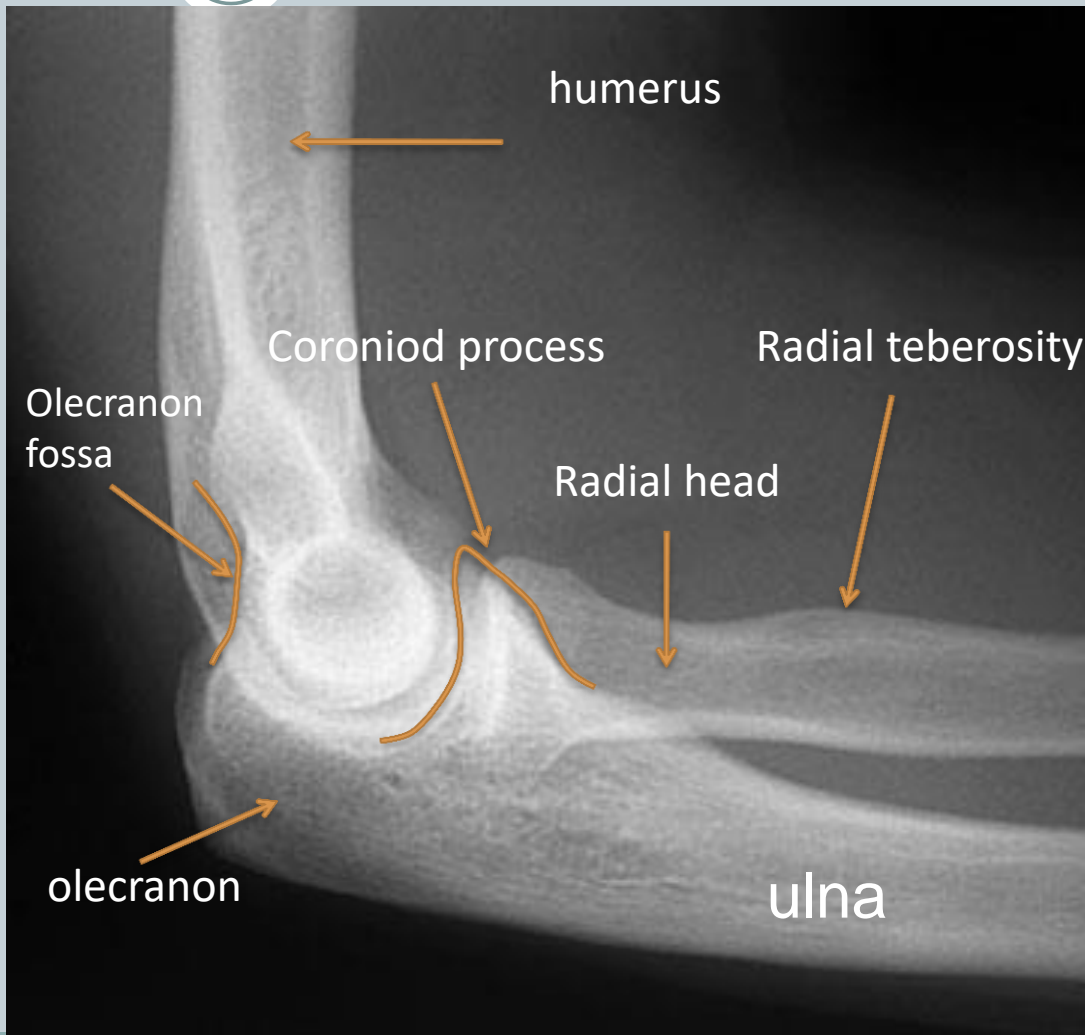












CHILD



ADULT





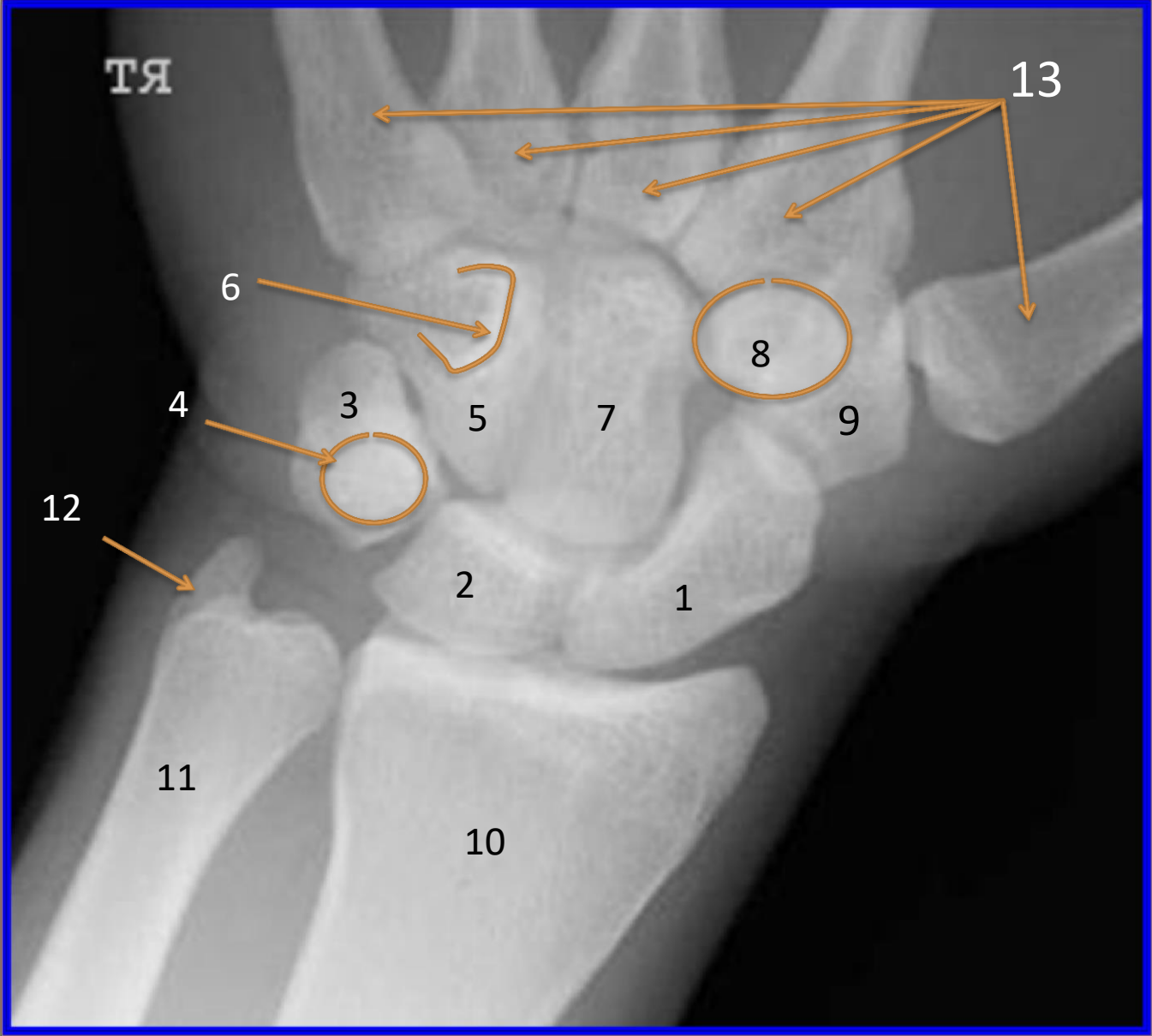
HAND



X RAY

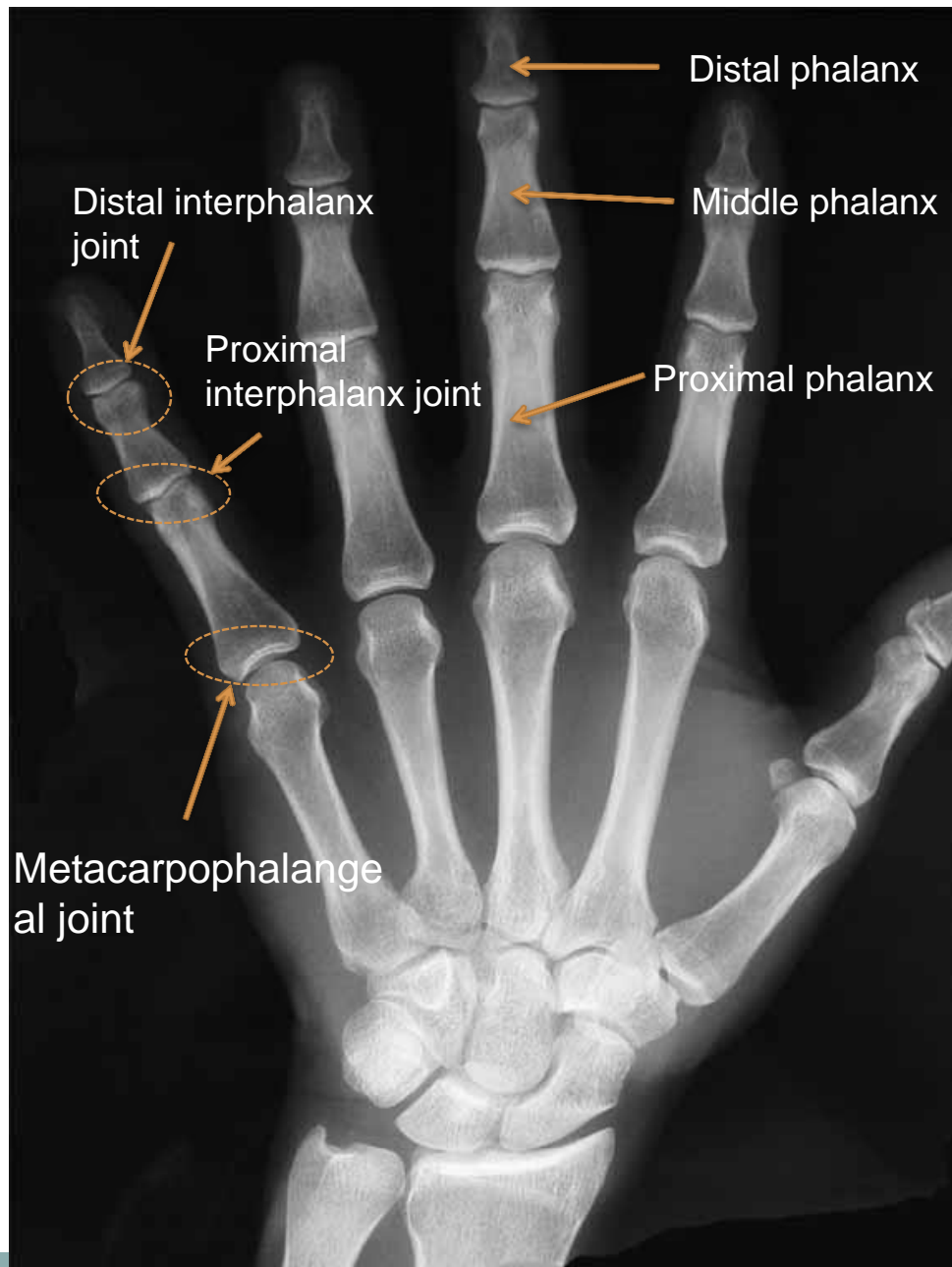
RT











CHILD

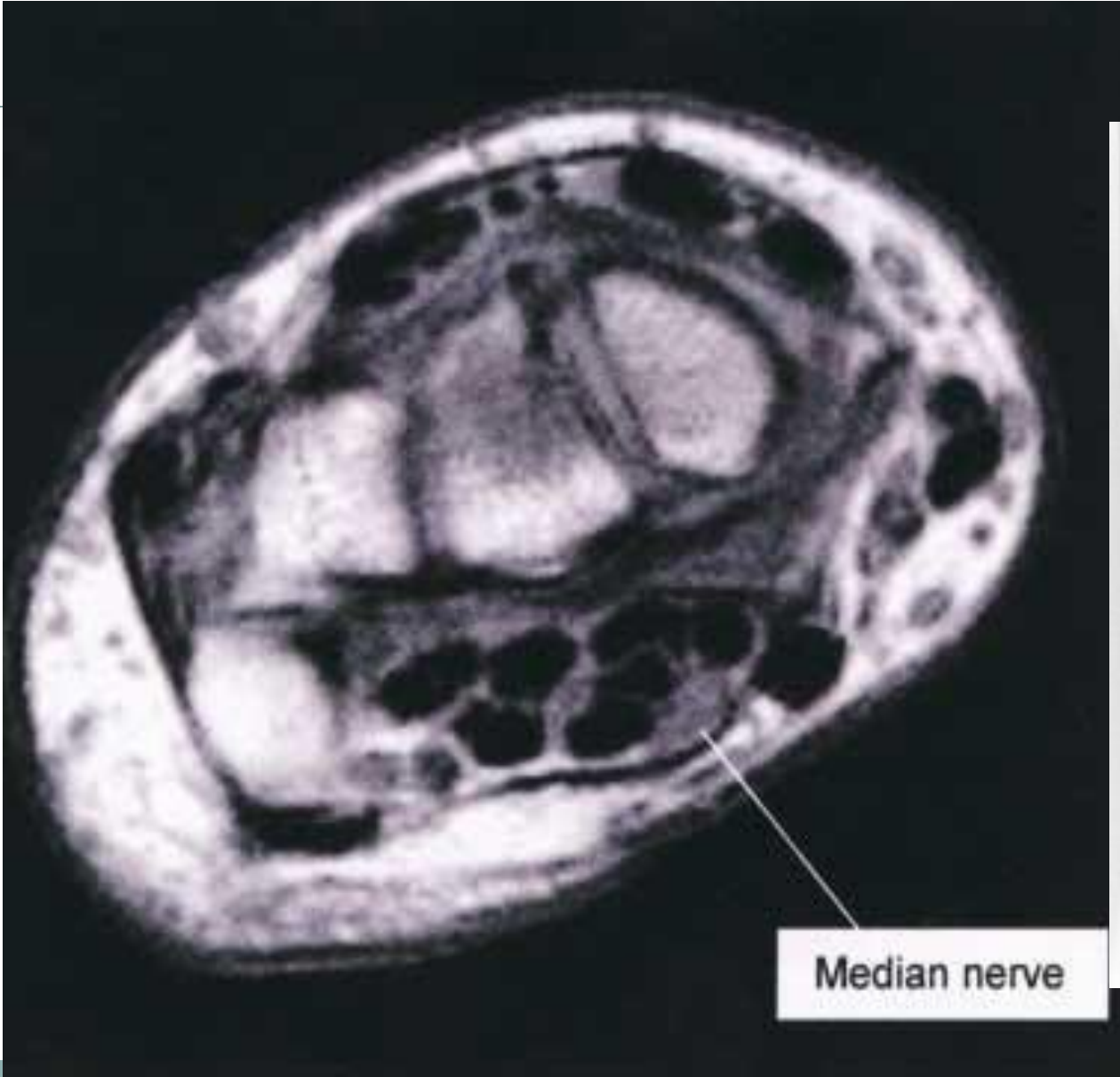


ADULT





MRI





THE END