

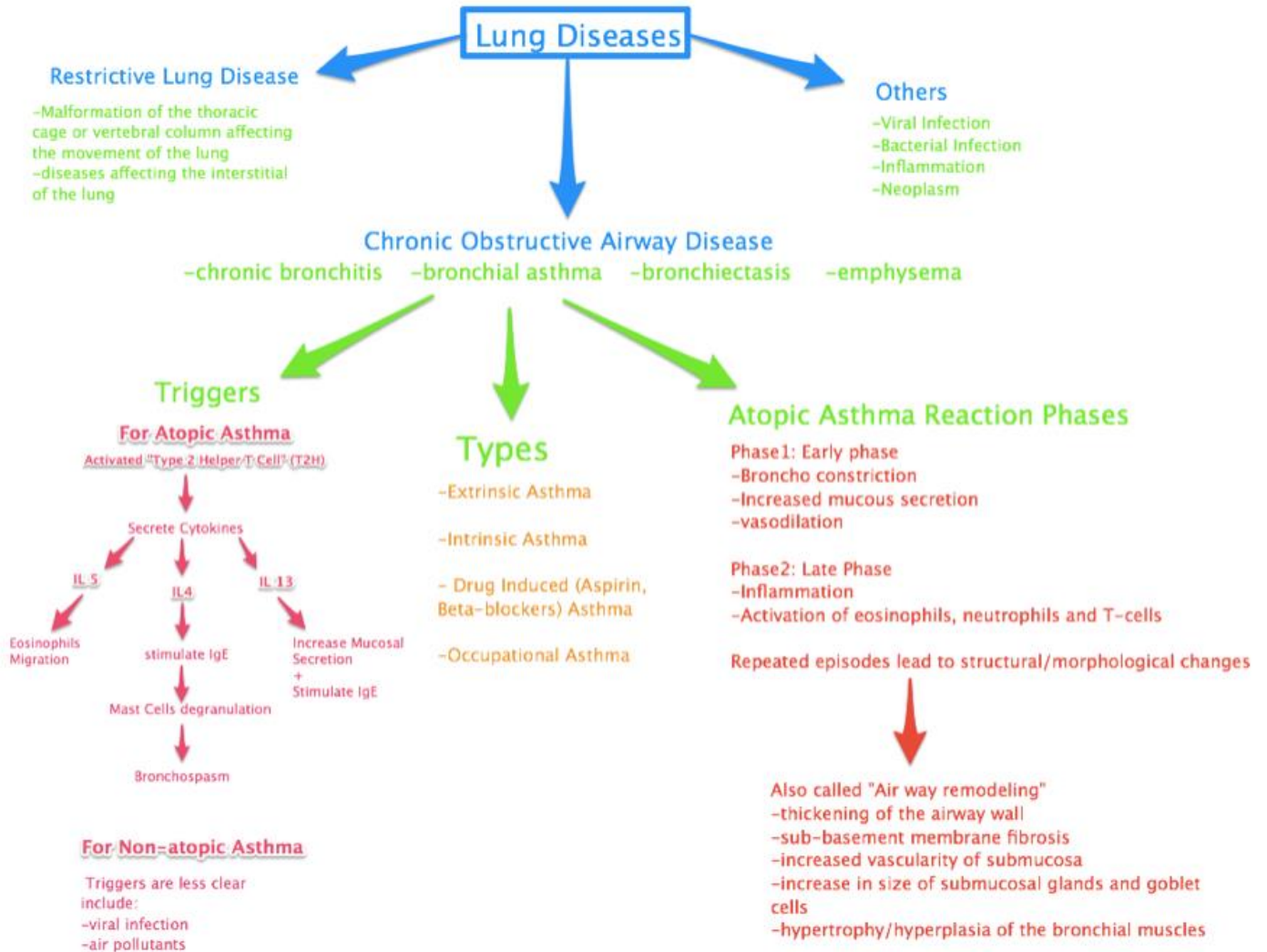
اللهم لا سهلأ إلا ما جعلته سهلاً وأنت تجعل الحزن إن شئت سهلاً



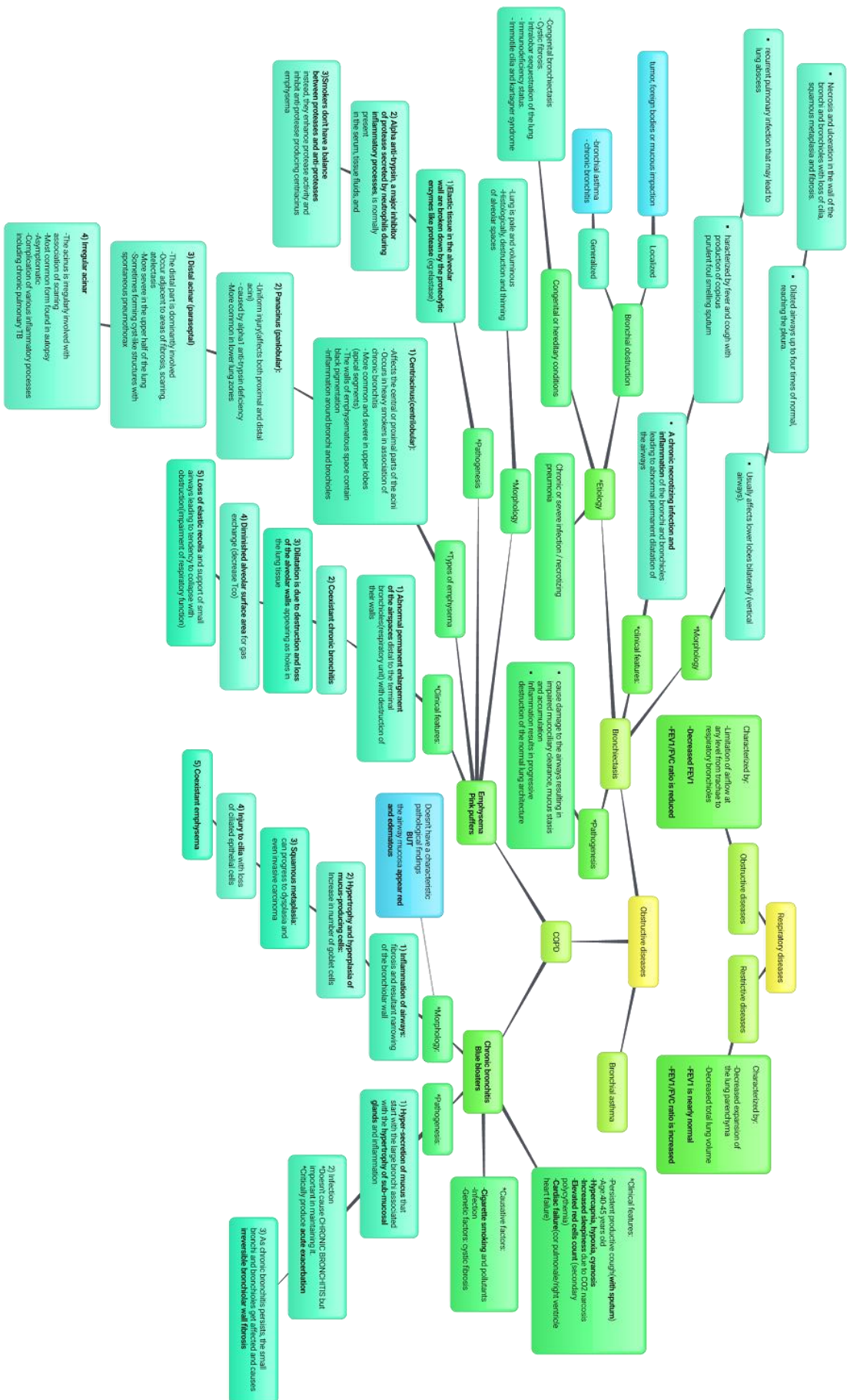
Pathology, respiratory block
Mind-maps



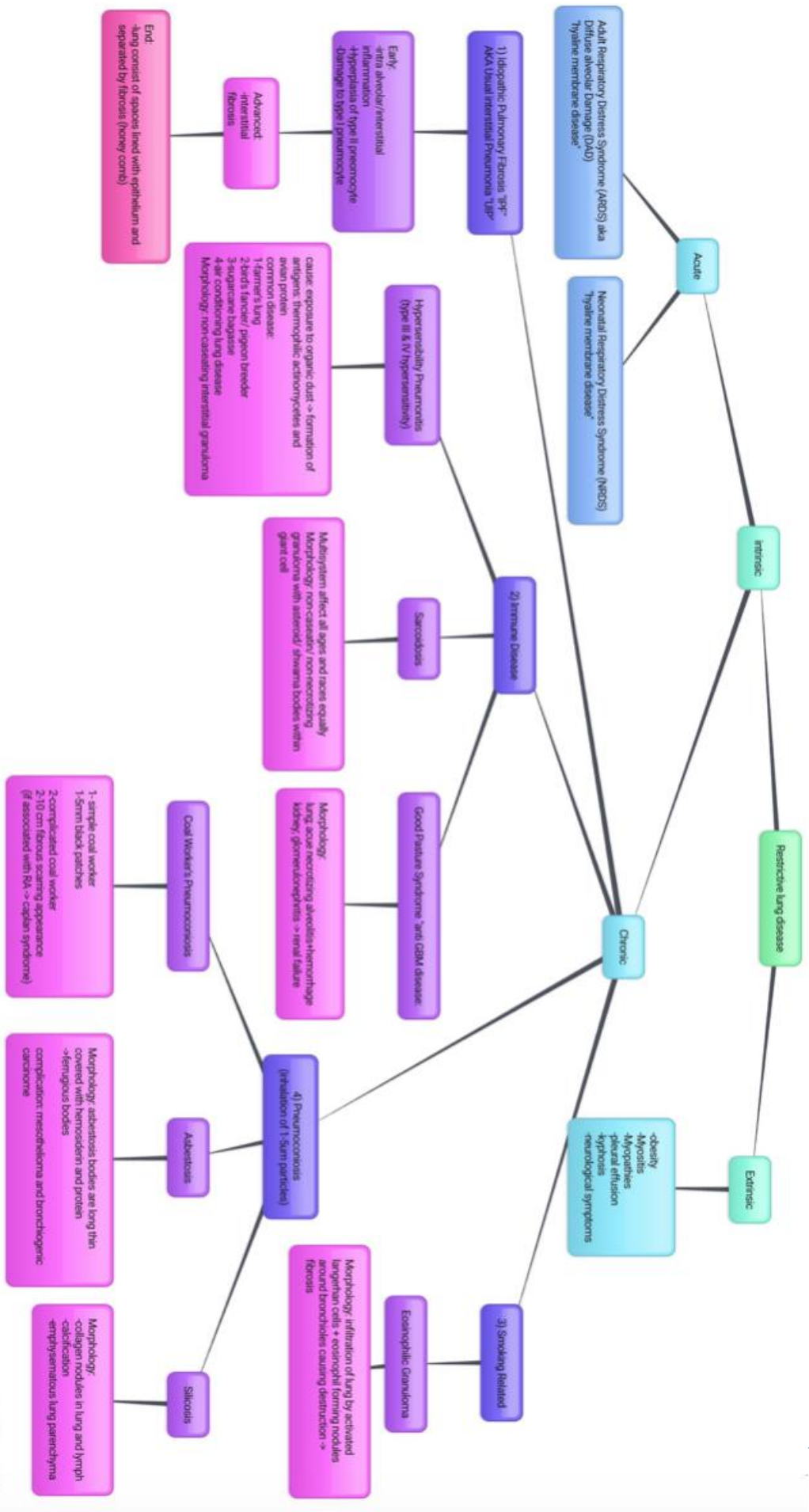
1-Bronchial Asthma



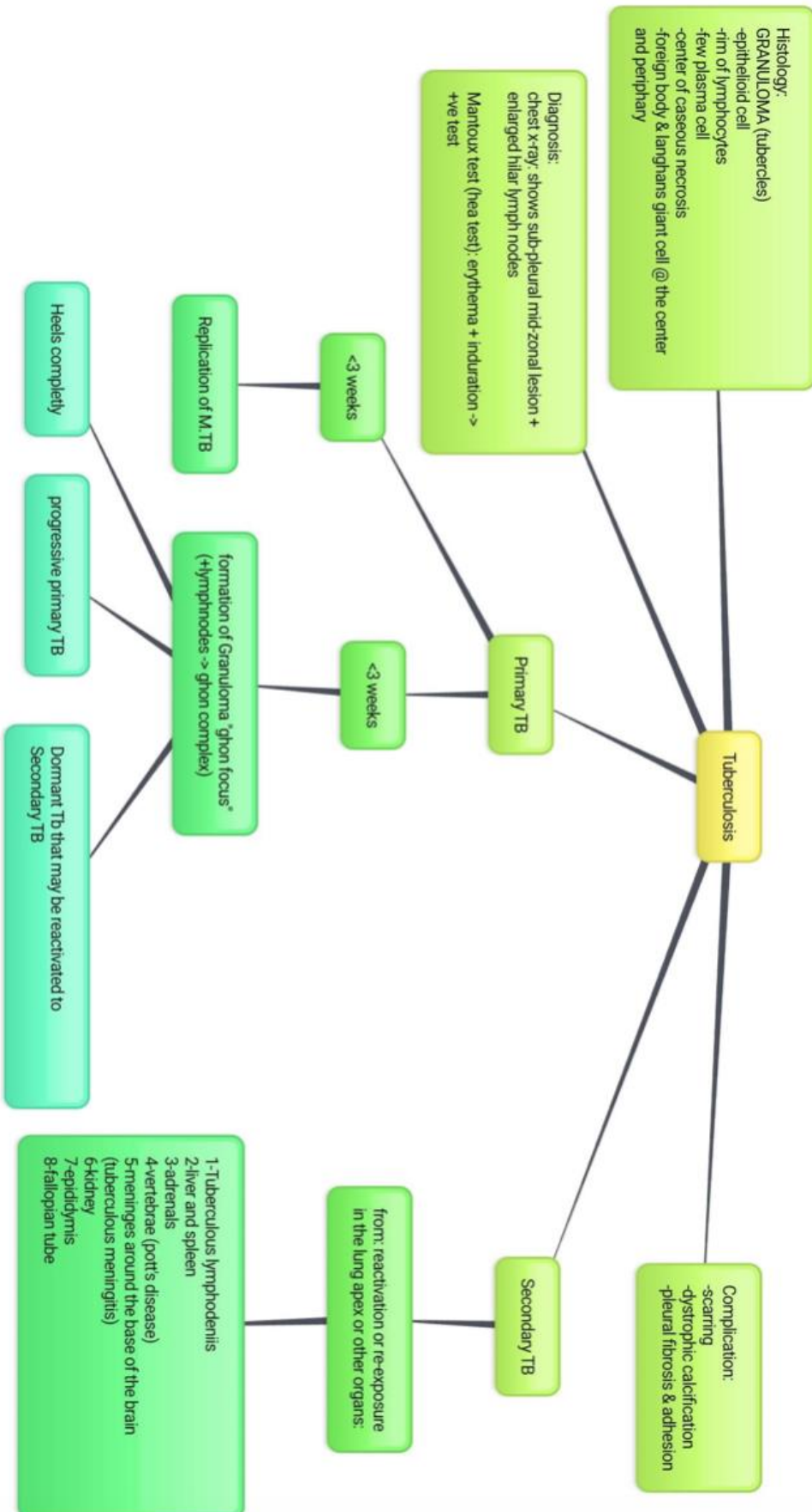
2-COPD



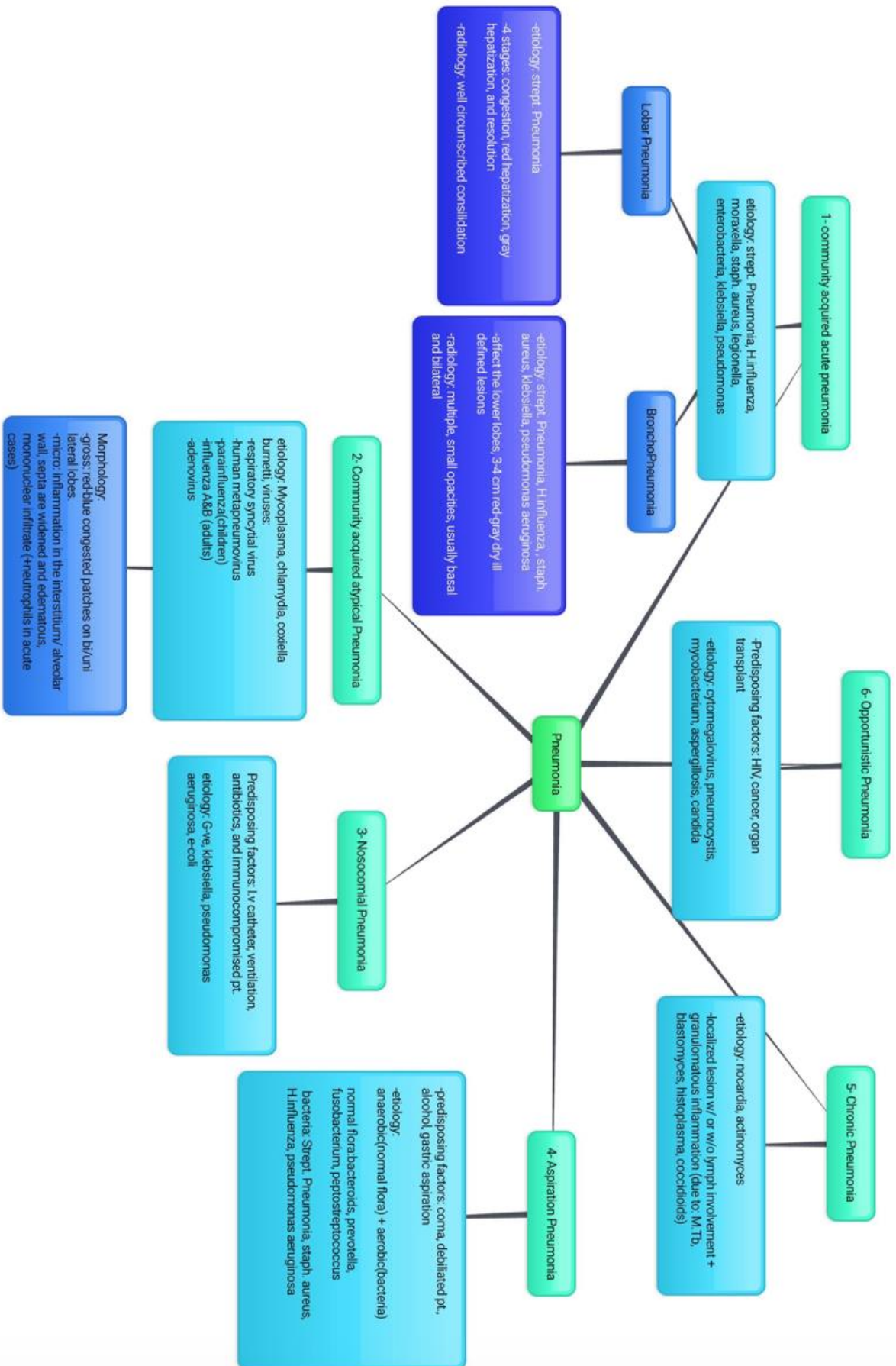
3-Restrictive diseases



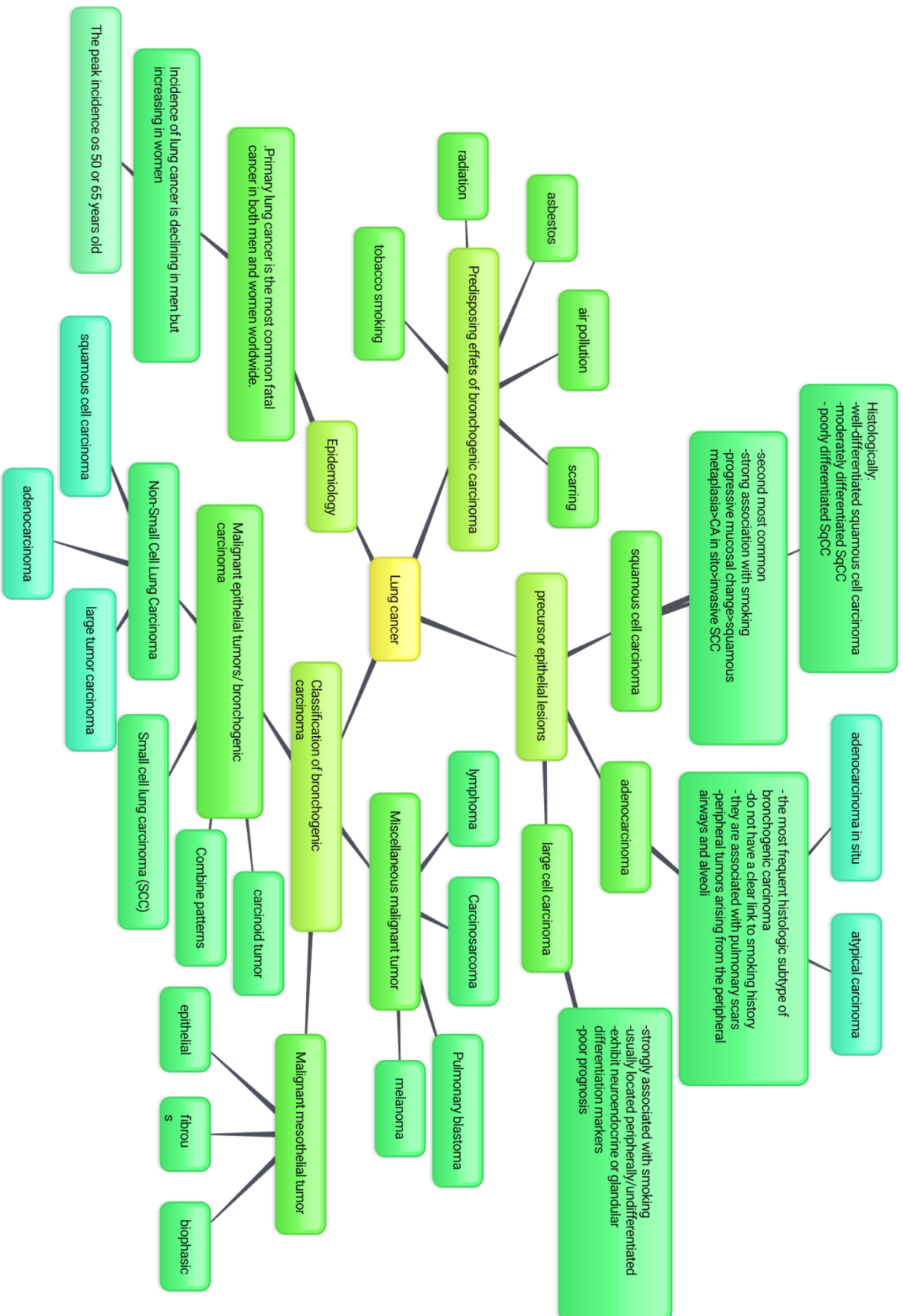
4-Tuberculosis



5-Pneumonia



6-lung cancer



Questions:

239. A 19-year-old female presents with urticaria that developed after she took aspirin for a headache. She has a history of chronic rhinitis, and physical examination reveals the presence of nasal polyps. This patient is at an increased risk of developing which one of the following pulmonary diseases following the ingestion of aspirin?

- a. Asthma
- b. Chronic bronchitis
- c. Emphysema
- d. Interstitial fibrosis
- e. Pulmonary hypertension

ANS: A

240. Which one of the following is a correct association concerning the pathogenesis of smoking-induced emphysema?

- a. Destruction of distal acinus = centrilobular emphysema
- b. Destruction of distal acinus = paraseptal emphysema
- c. Destruction of entire acinus = panlobular emphysema
- d. Destruction of proximal acinus = centrilobular emphysema
- e. Destruction of proximal acinus = paraseptal emphysema

ANS: D

236. Histologic sections of lung tissue from an individual with adult respiratory distress syndrome (ARDS) are most likely to reveal

- a. Angioinvasive infiltrates of pleomorphic lymphoid cells
- b. Deposits of needle-like crystals from the membranes of eosinophils
- c. Infiltrating groups of malignant cells having intercellular bridges
- d. Irregular membranes composed of edema, fibrin, and dead cells lining alveoli
- e. Plexiform lesions within pulmonary arterioles

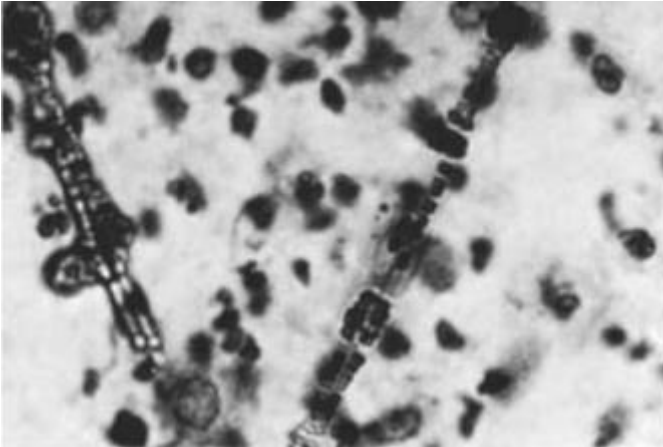
ANS; D

241- An abnormality that inhibits the normal functioning of ATPase-containing dynein arms of cilia is most likely to produce:

- a) Asthma
- b) Bronchiectasis
- c) Cirrhosis
- d) Emphysema
- e) Steatosis

ANS: B

247. The photomicrograph of the bronchial washing specimen shown below depicts



- a. Schaumann bodies
- b. Ferruginous bodies
- c. Cholesterol crystals
- d. species *Candida*
- e. Silica particles

Ans : B

Thank you

اللهم انى استودعتك ما قرأت وما حفظت فرده الى وقت حاجتى

Girls

Leader:

Munirah aldofyan

Members :

1-Lama ALTamimi

2-Reema ALSHayie