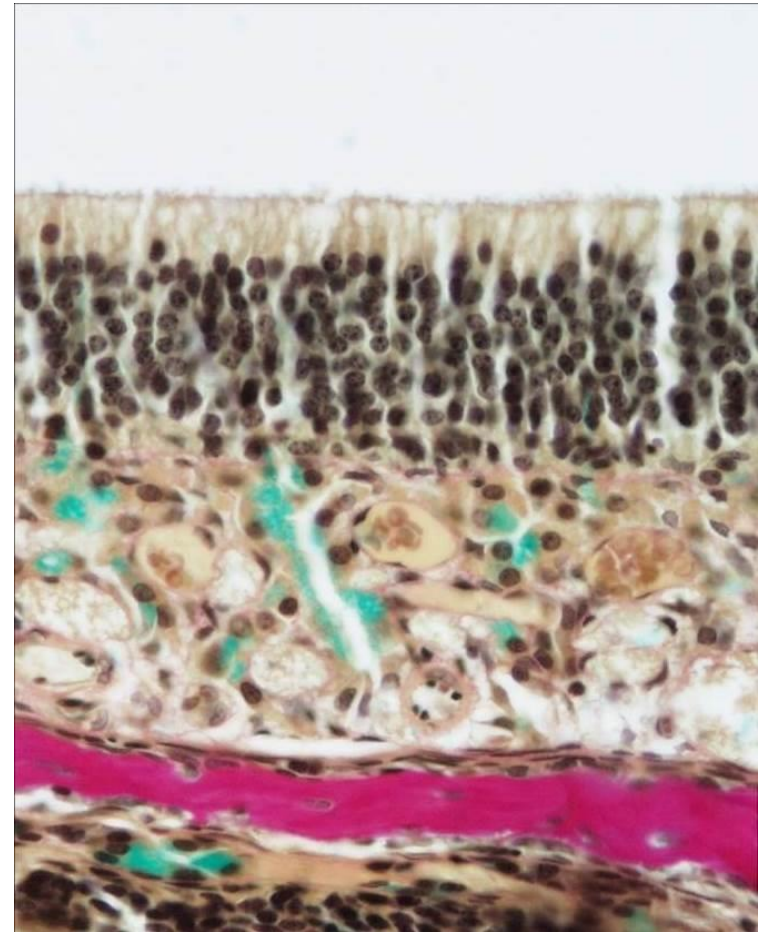
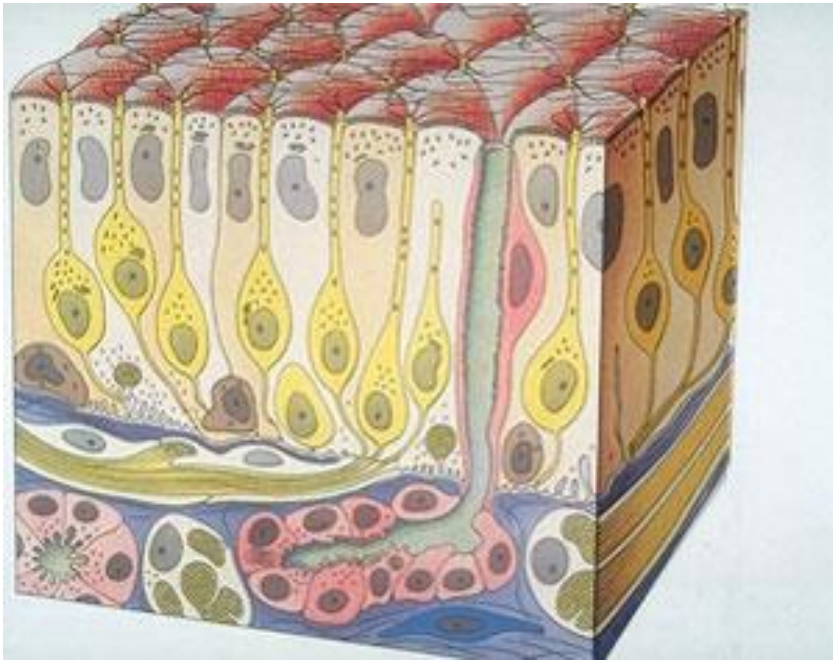


Respiratory System

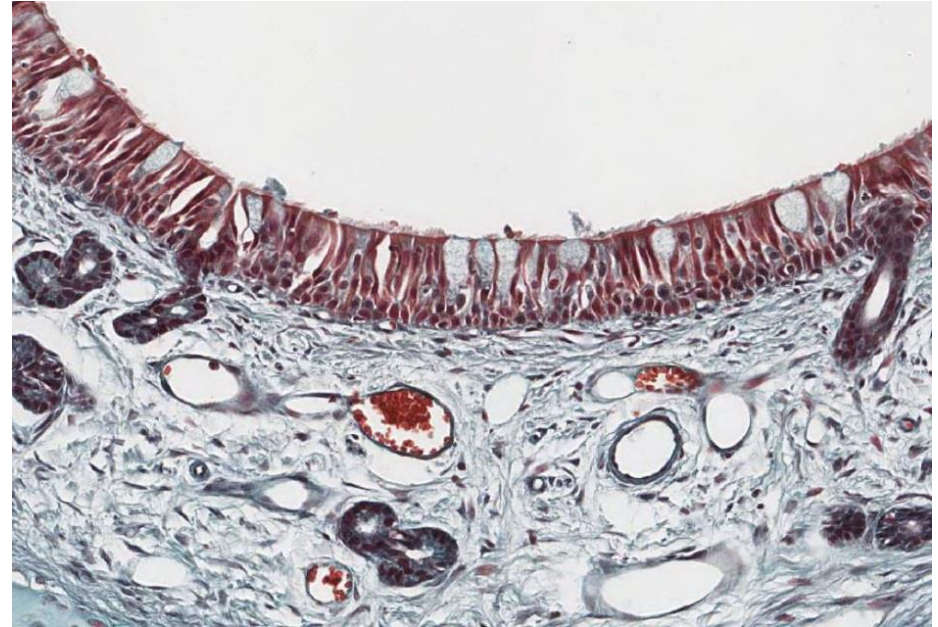
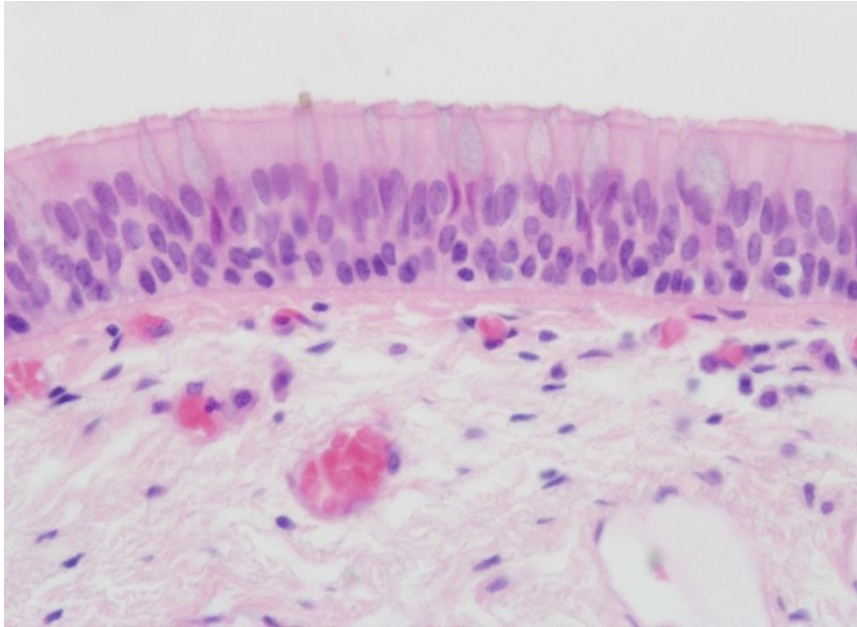
Practical Pictures



NASAL CAVITY AND SEPTUM



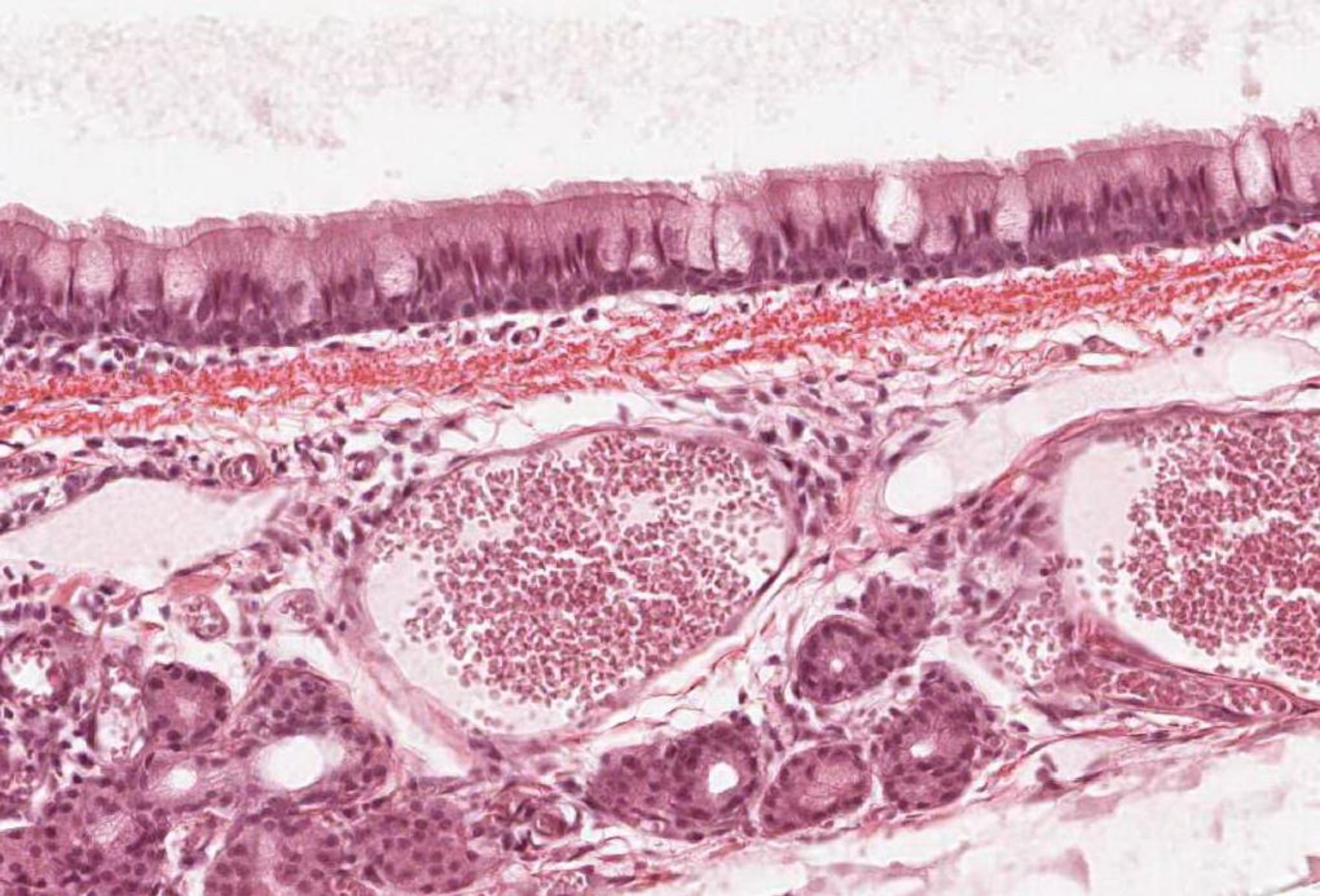
OLFACTORY
MUCOSA



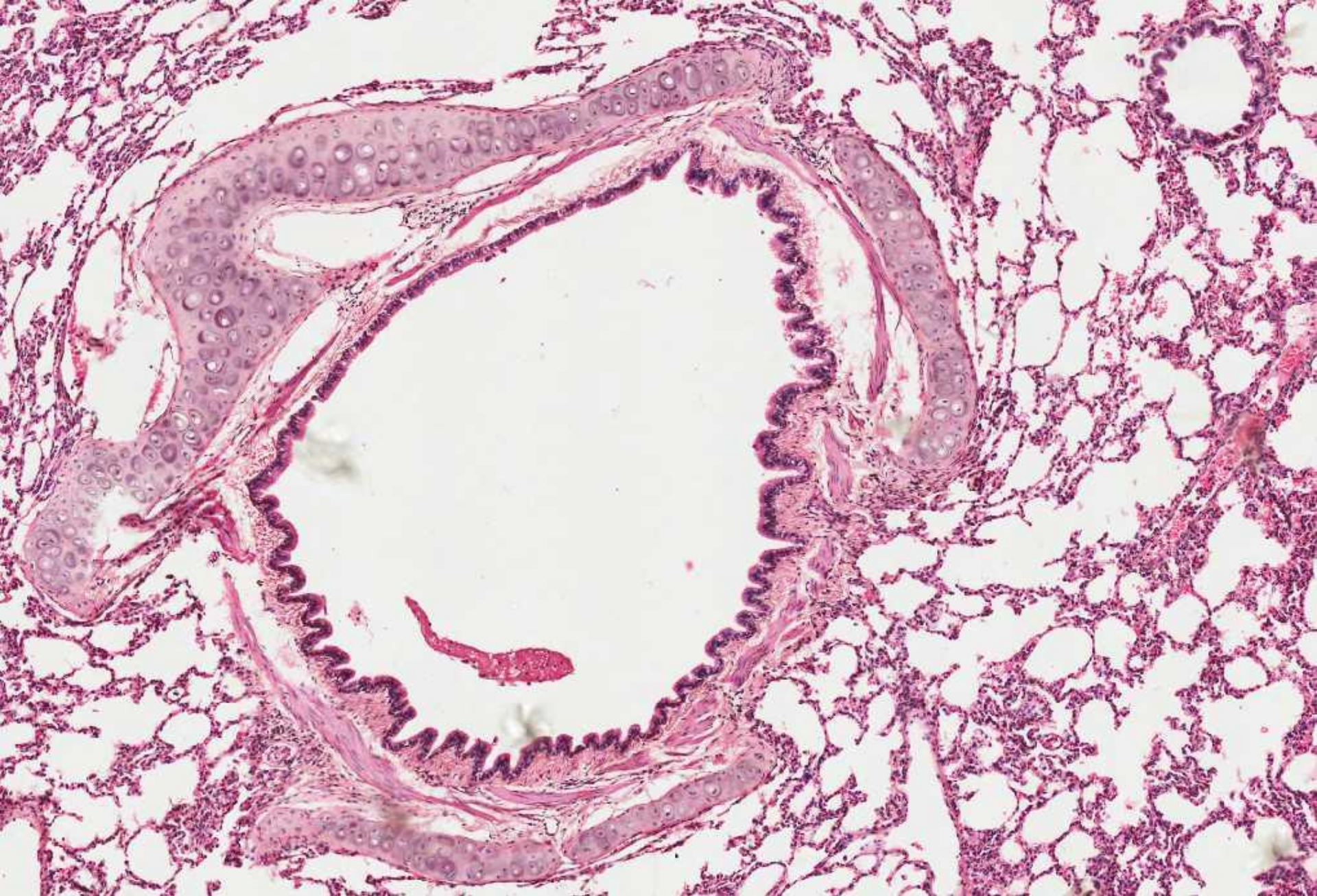
NASAL MUCOSA – respiratory epithelium and lamina propria



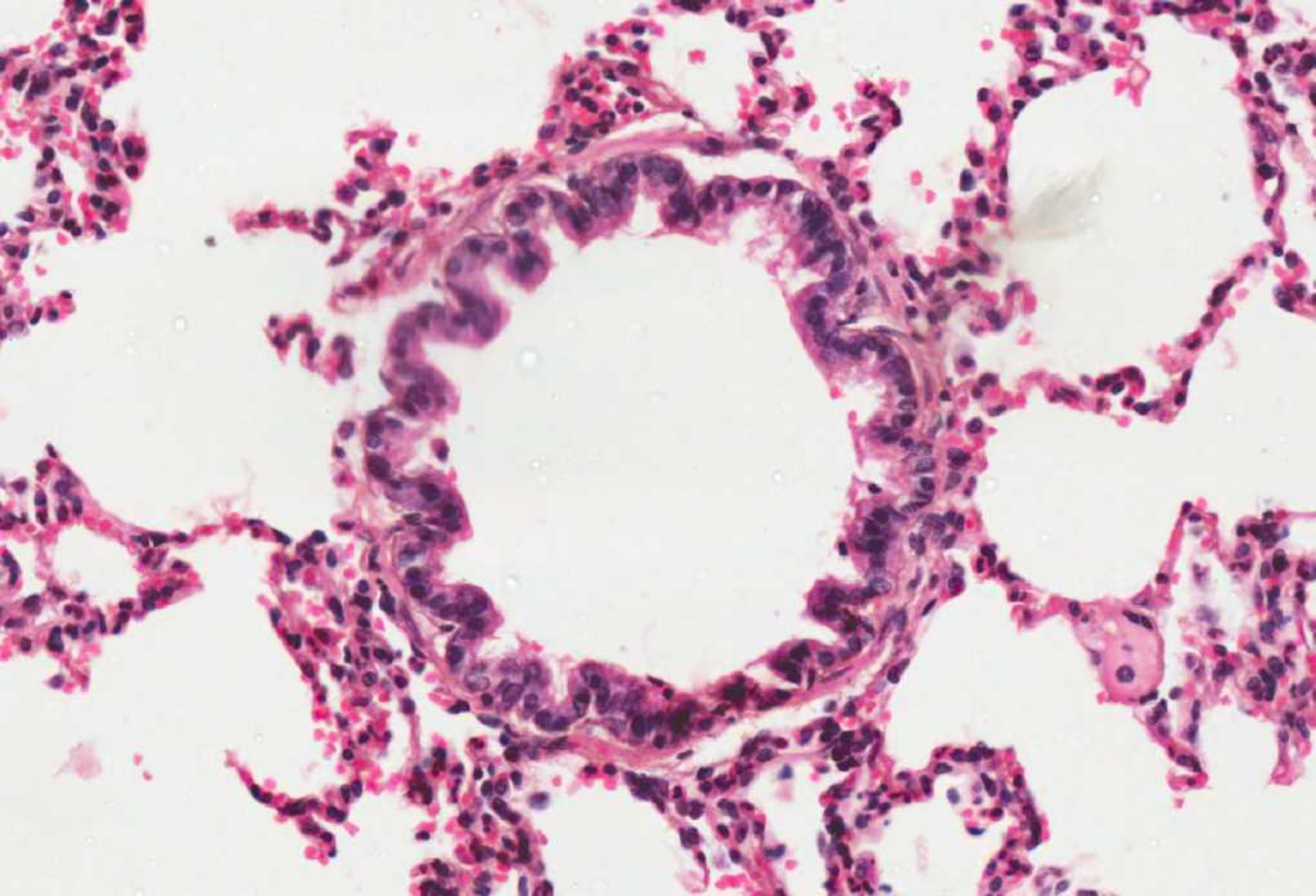
TRACHEA



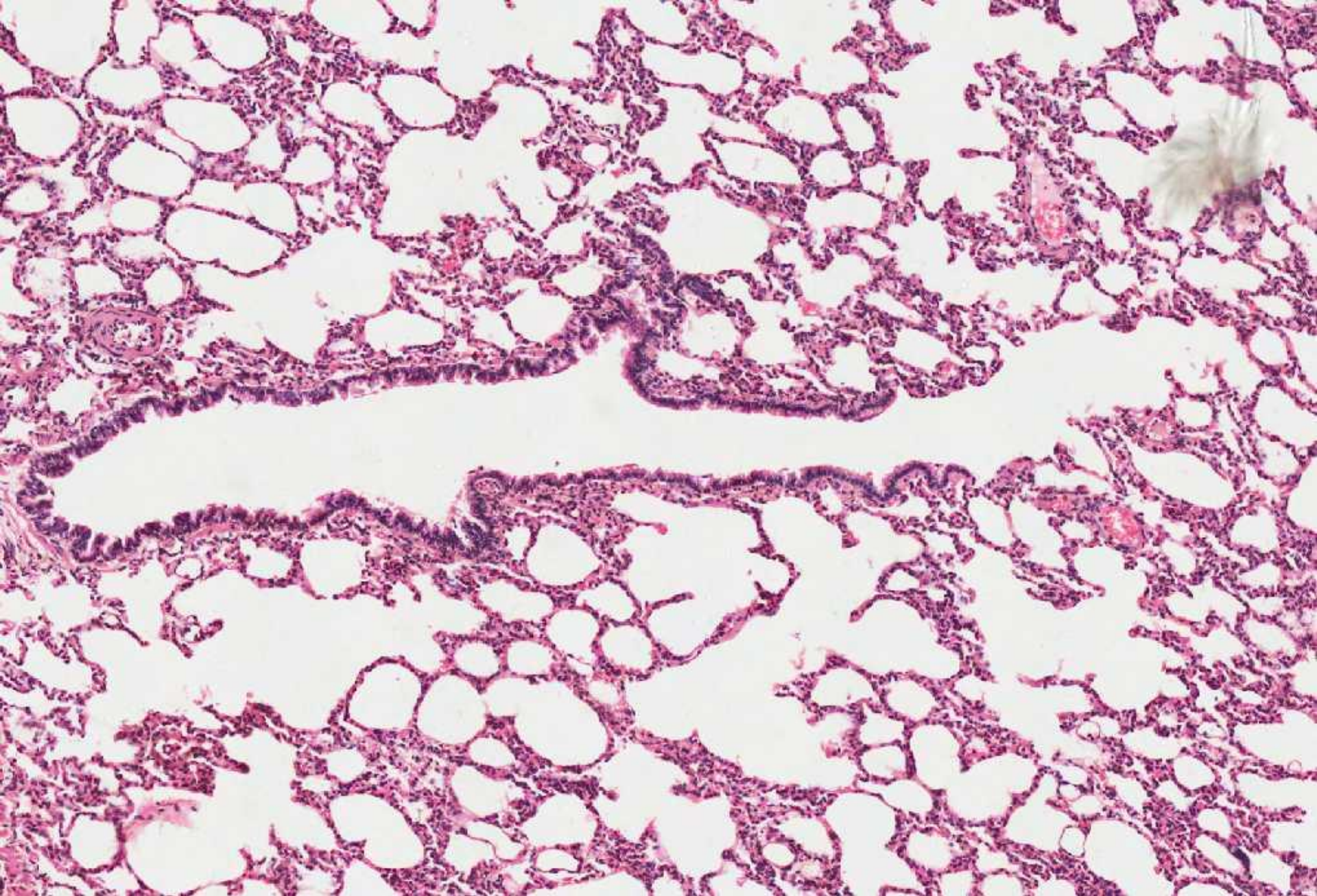
TRACHEA – mucosa (respiratory epithelium) and submucosa



LUNG – intrapulmonary bronchus and bronchiole



LUNG – Bronchiole (TS)



LUNG – Bronchiole (LS)