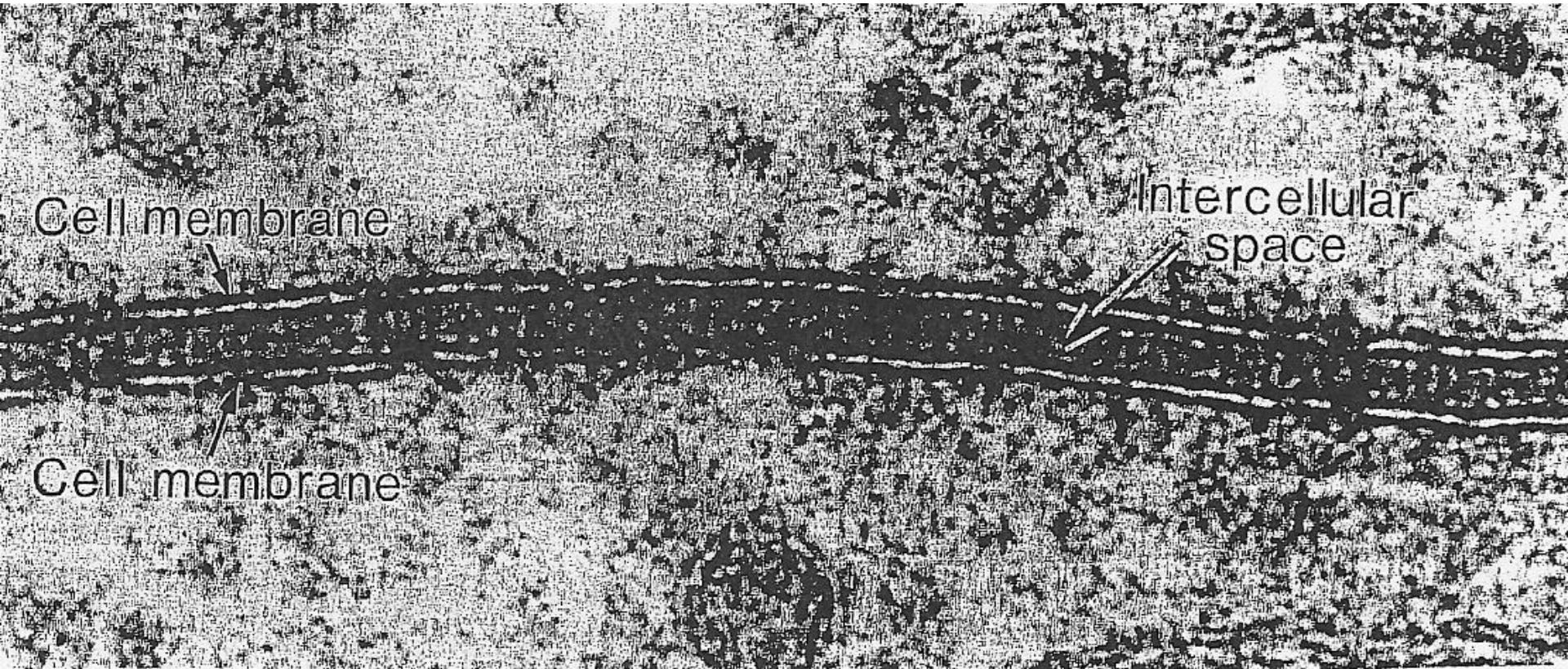


**Nucleus**





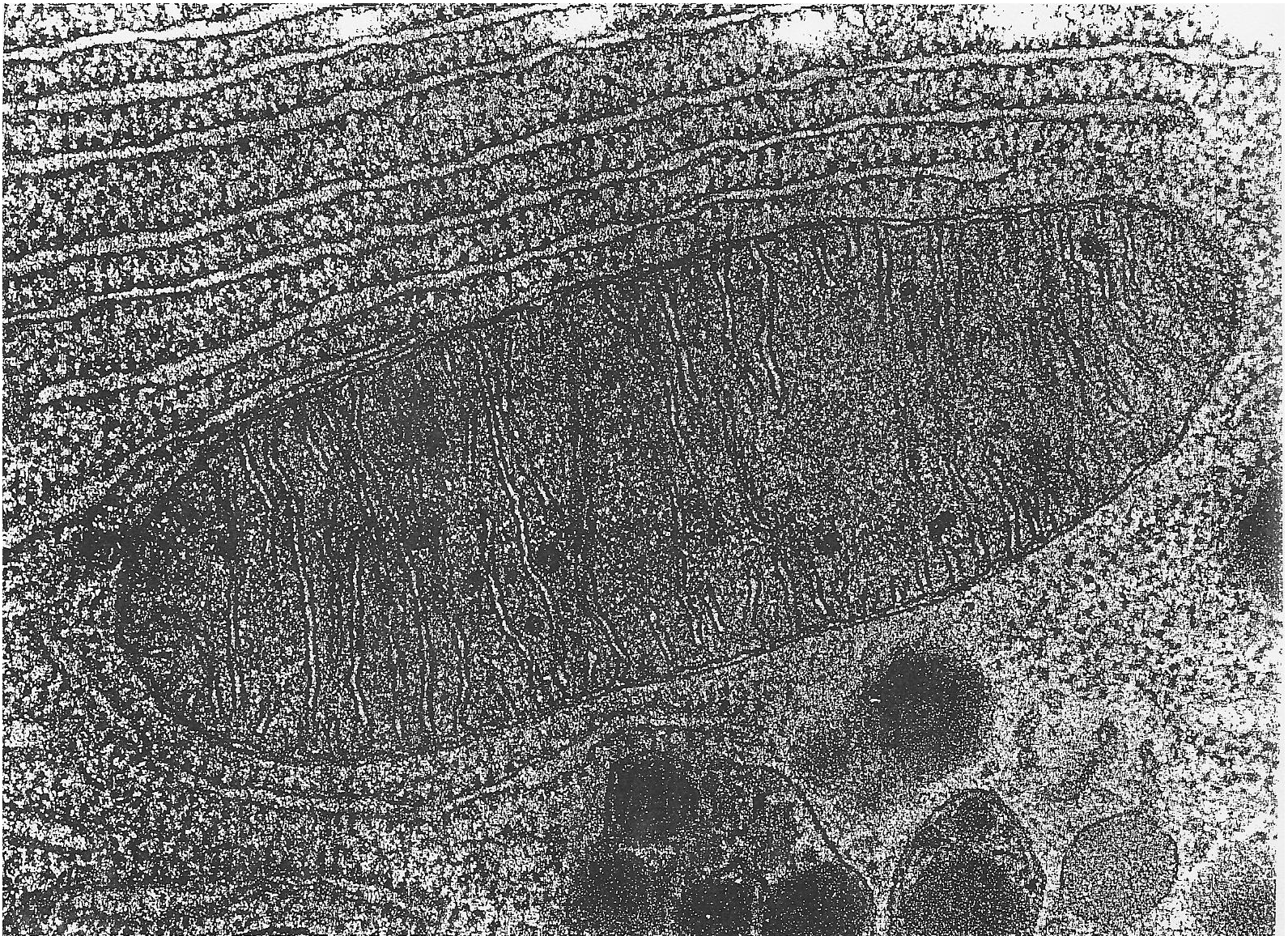
Cell membrane

Intercellular space

Cell membrane

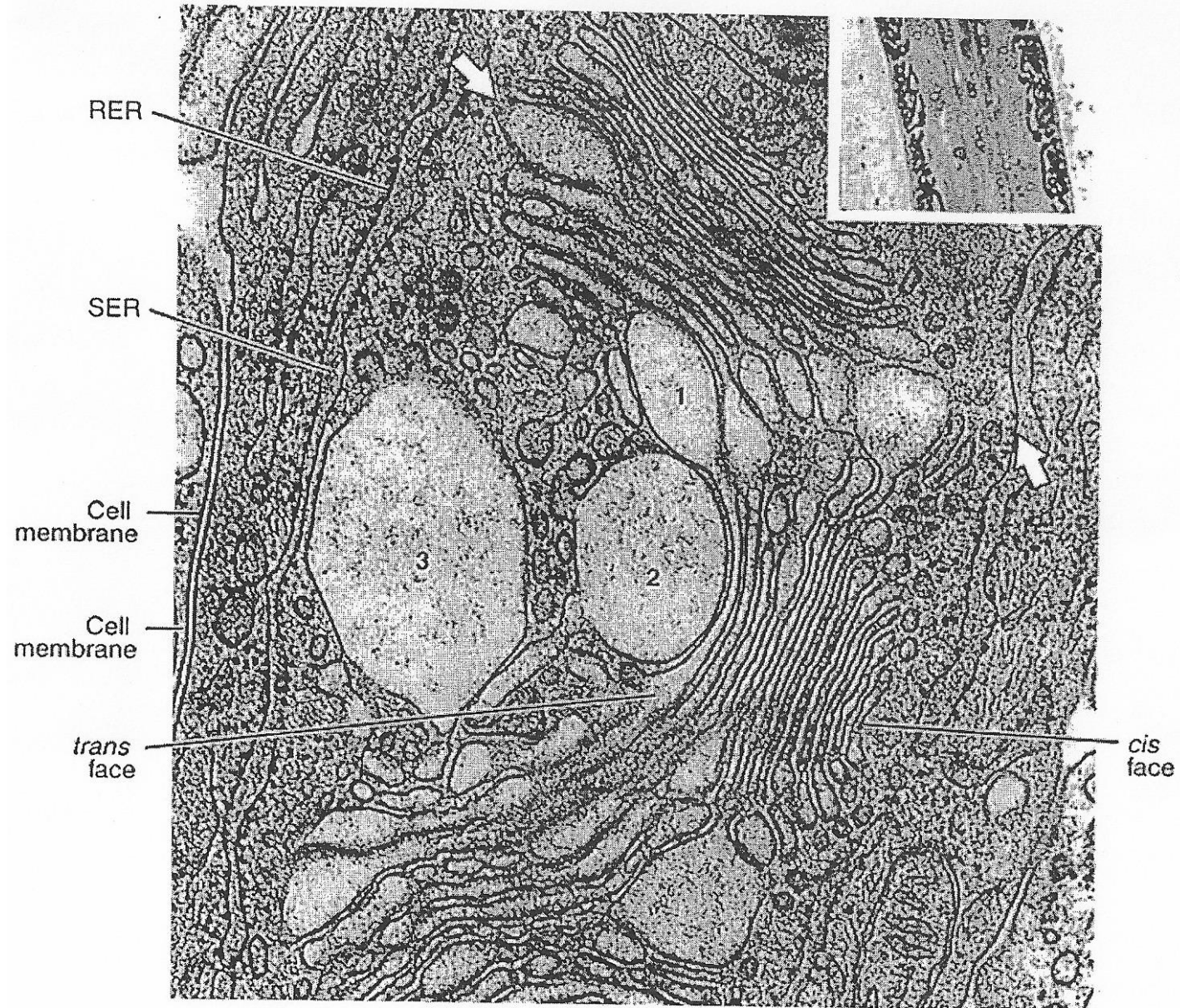
# Cell Membranes





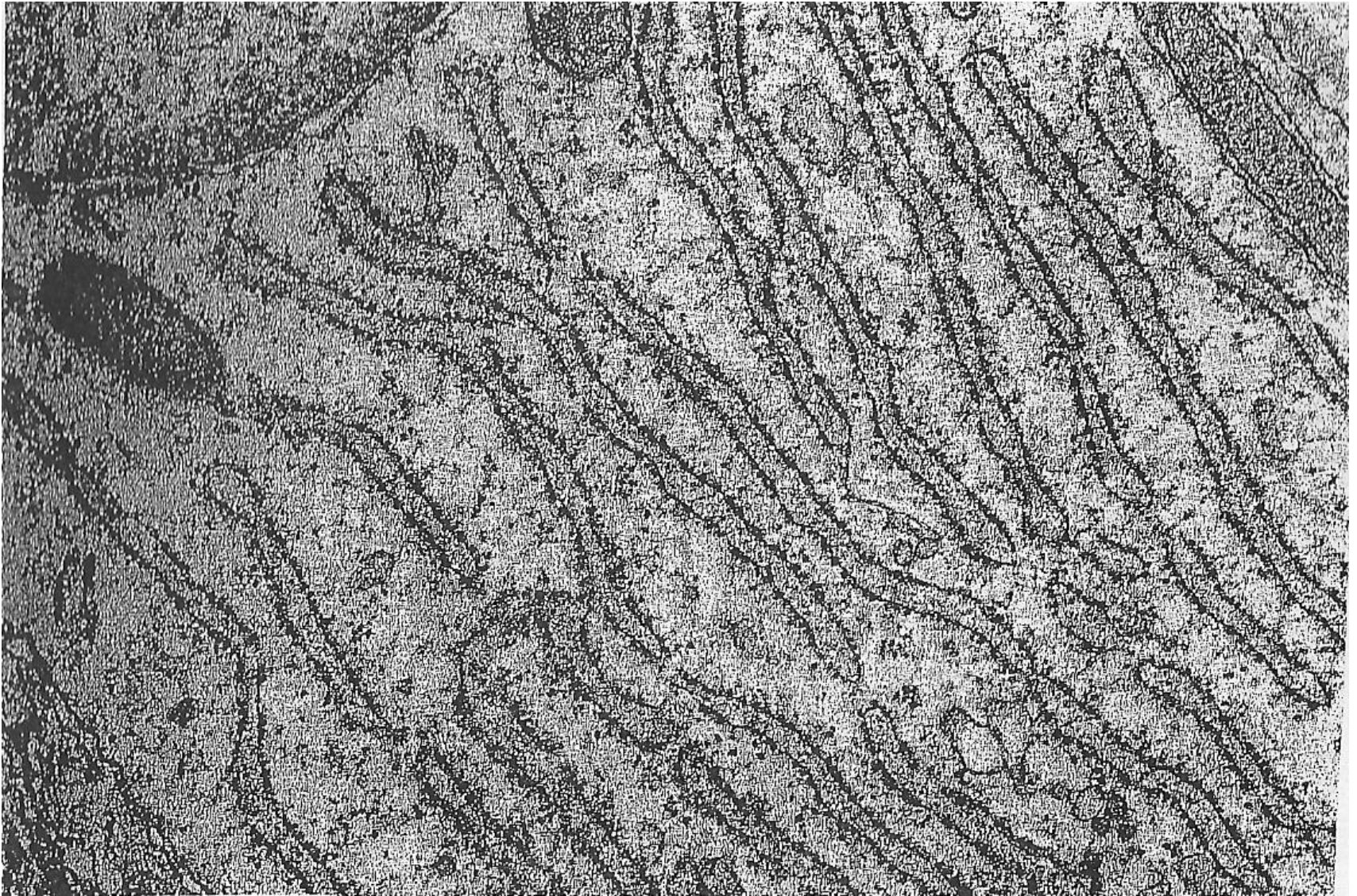
**Mitochondria**





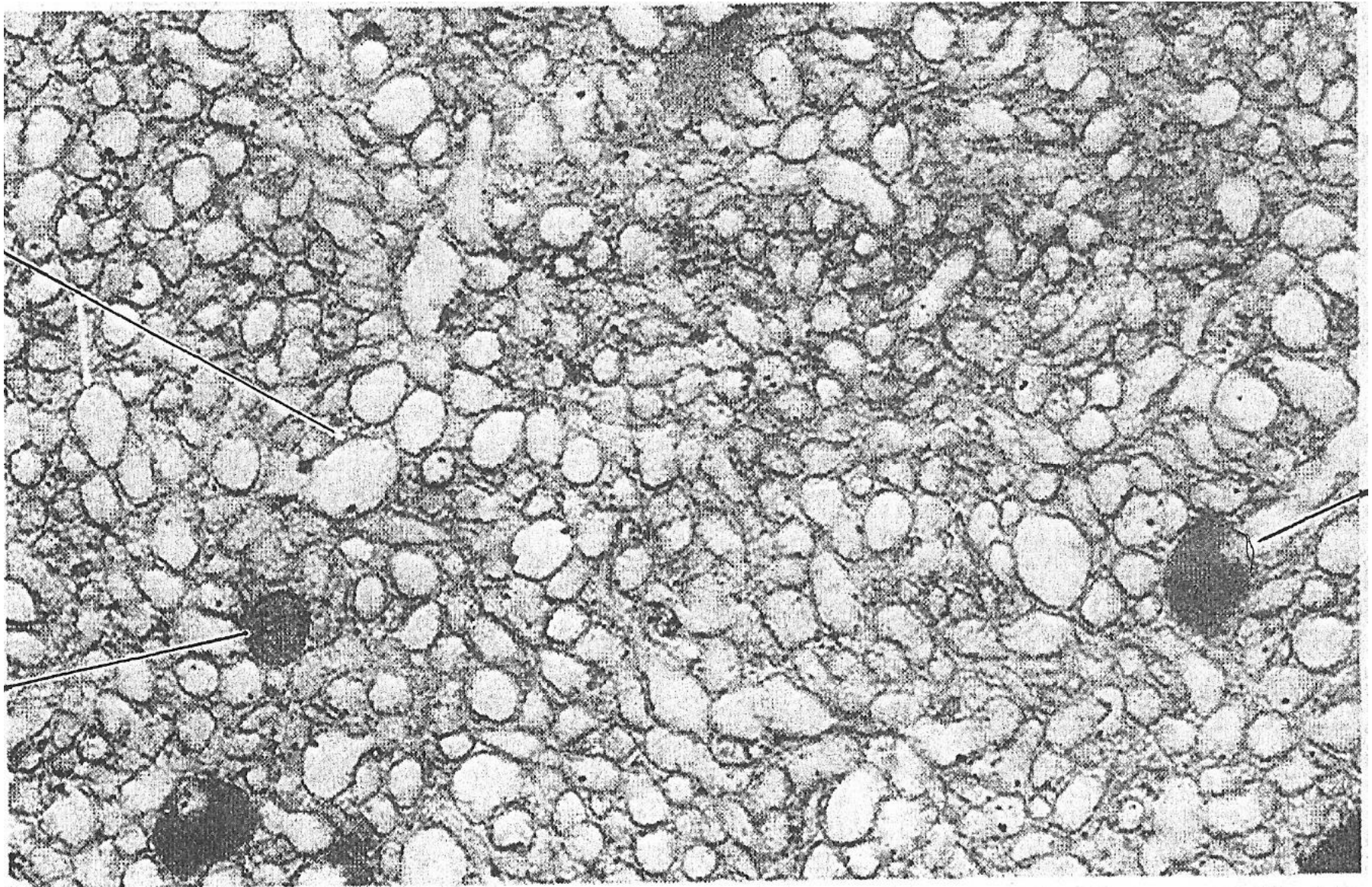
# Golgi Apparatus





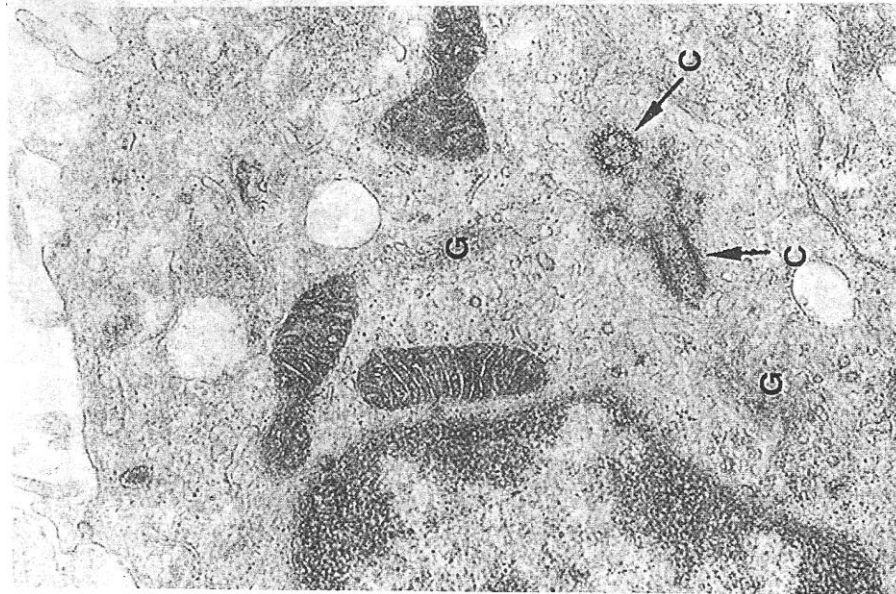
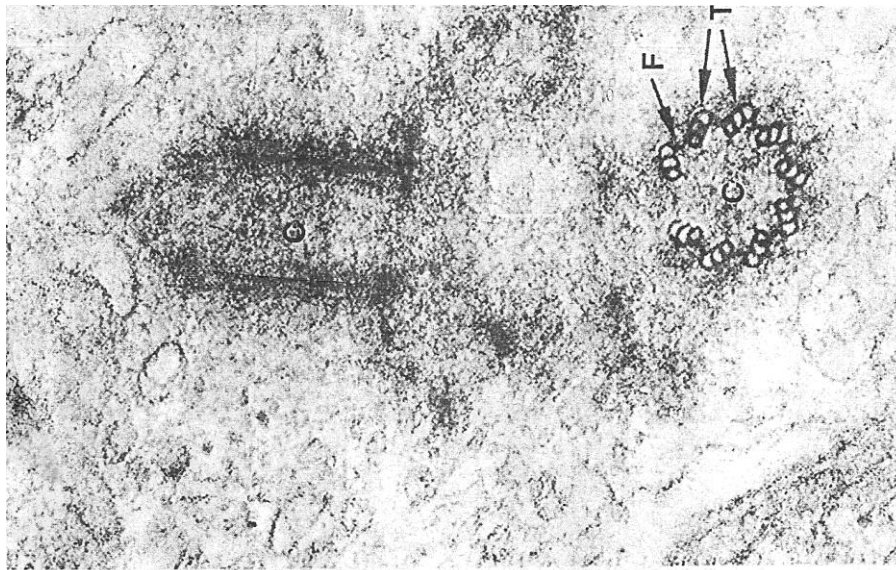
**Rough Endoplasmic Reticulum**





**Smooth Endoplasmic Reticulum**



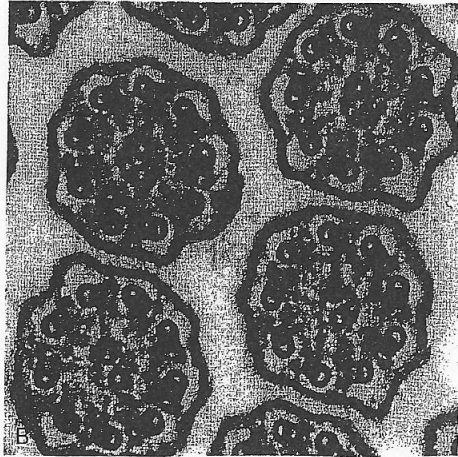


# Centrioles





L.S.

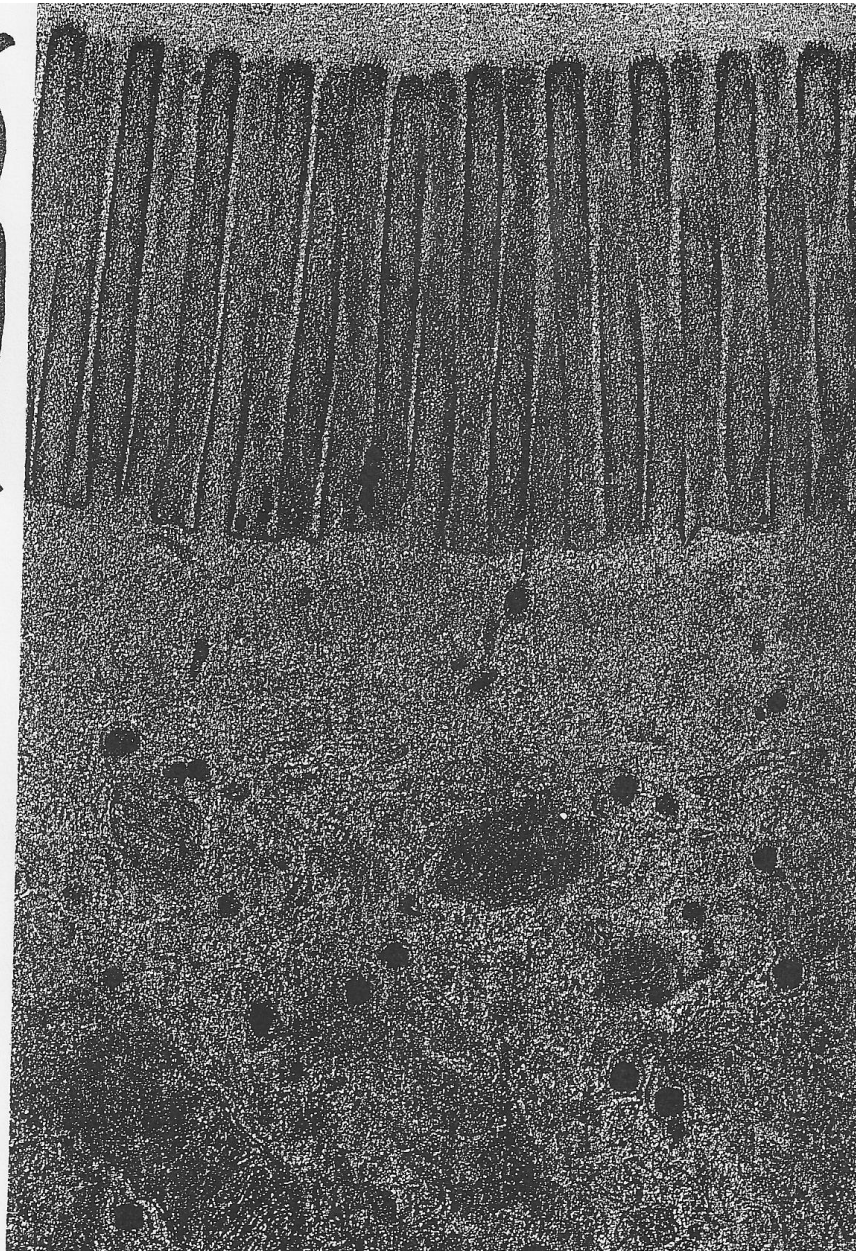


T.S.

**Cilia**



microvilli



**Microvilli**