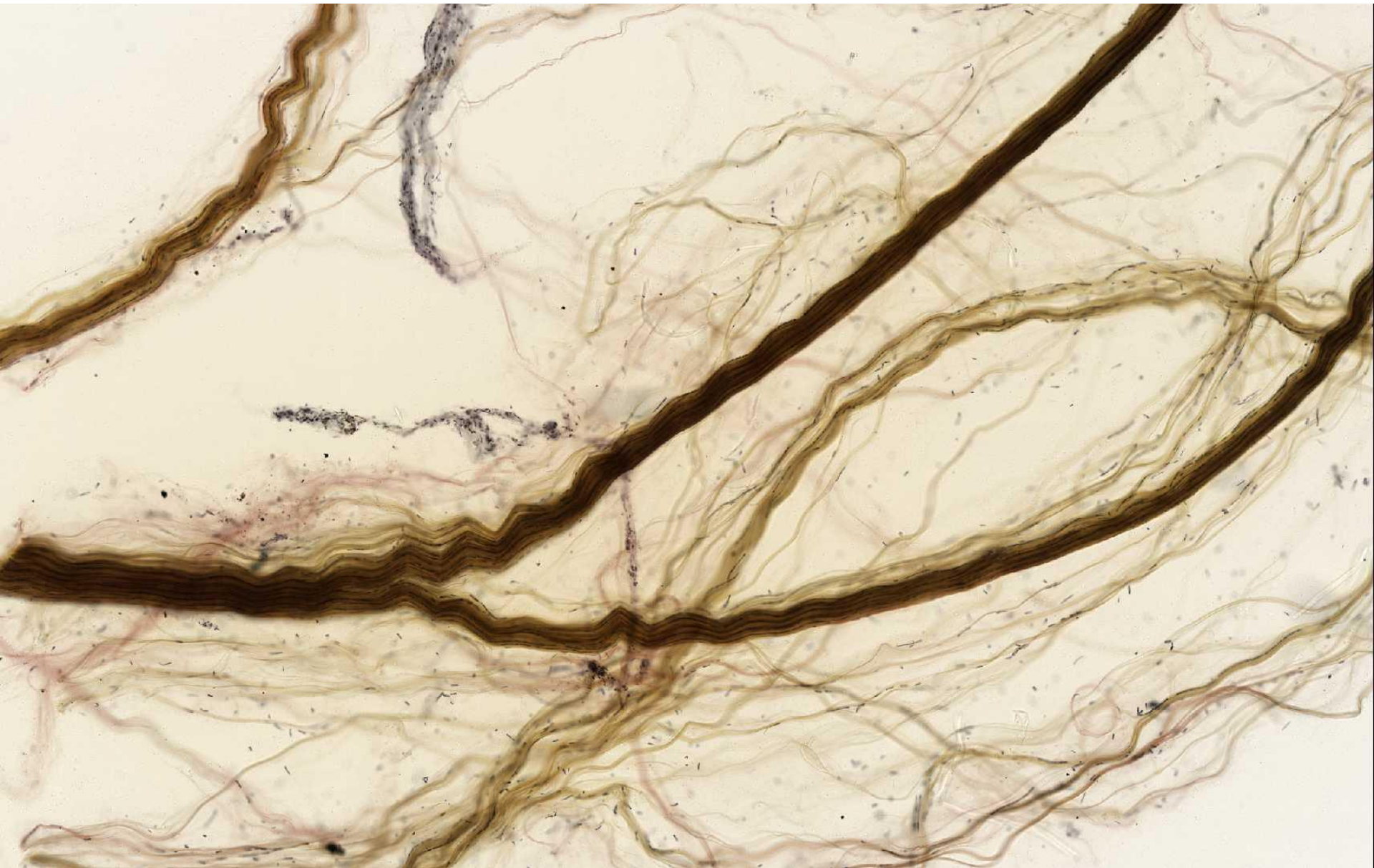


Connective Tissue

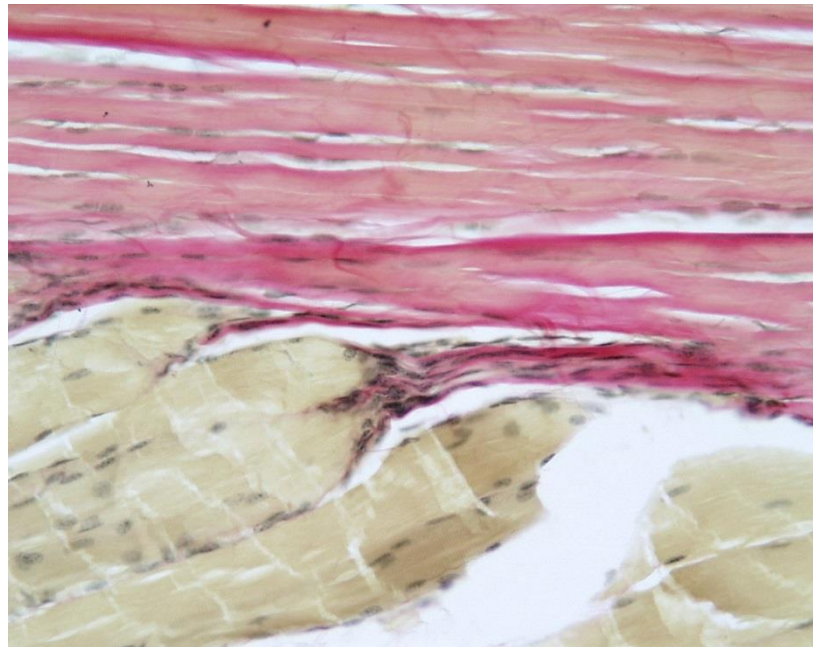
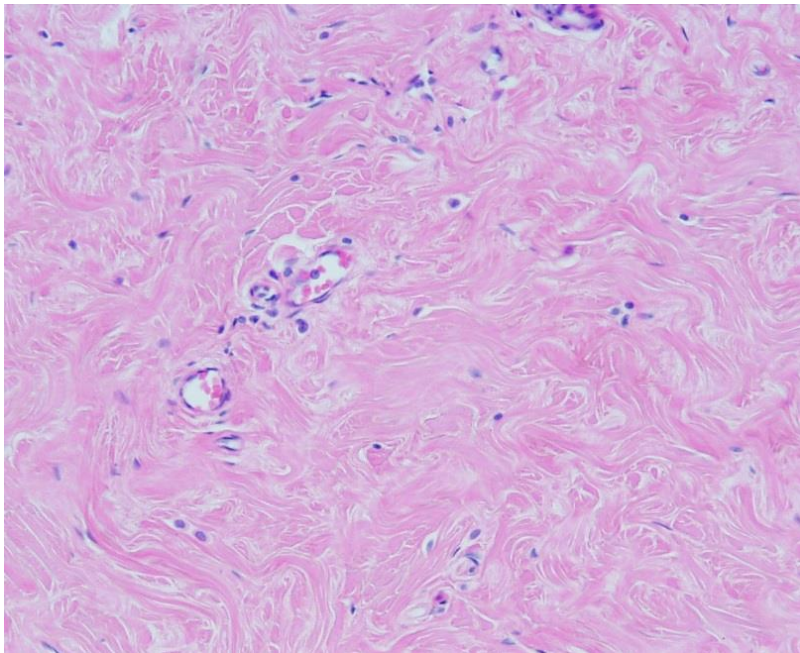
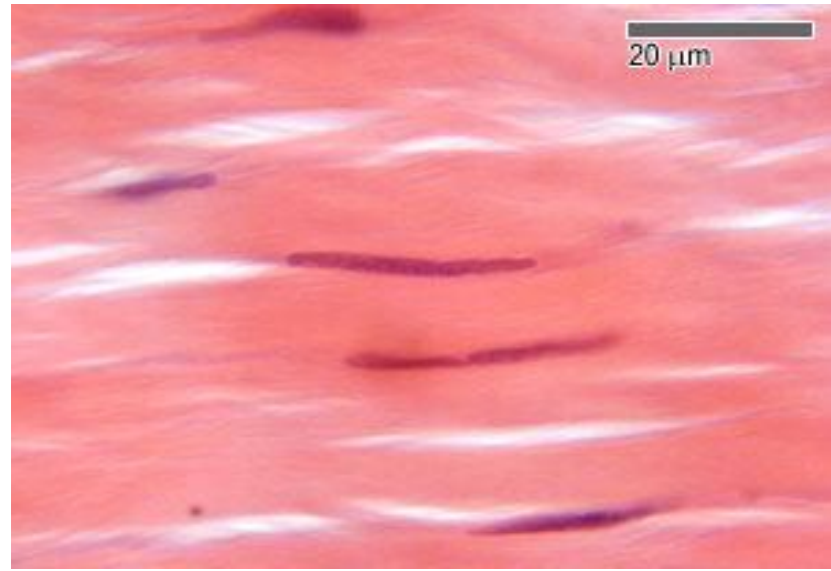
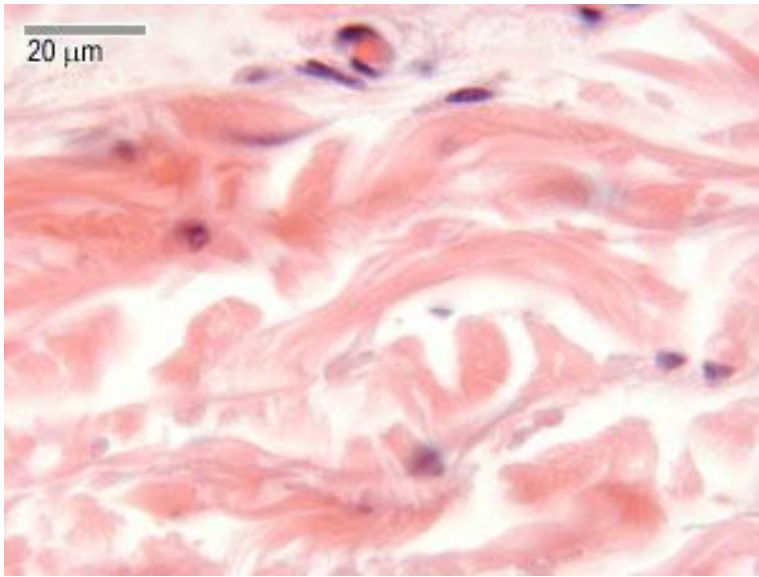
Practical Pictures



Dense collagenous connective tissue (e.g. in tendon)



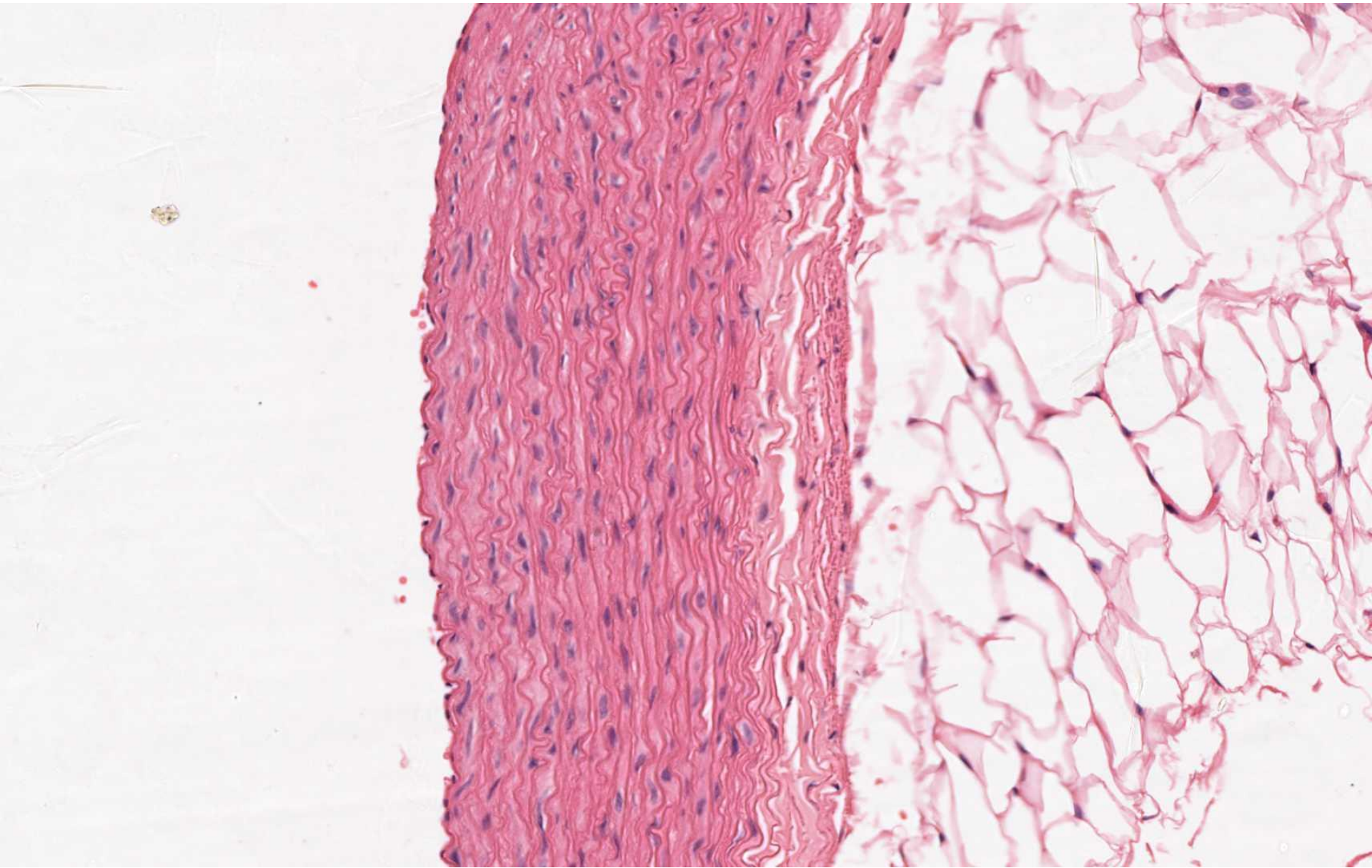
Dense collagenous connective tissue (e.g. in tendon)



Dense connective tissue

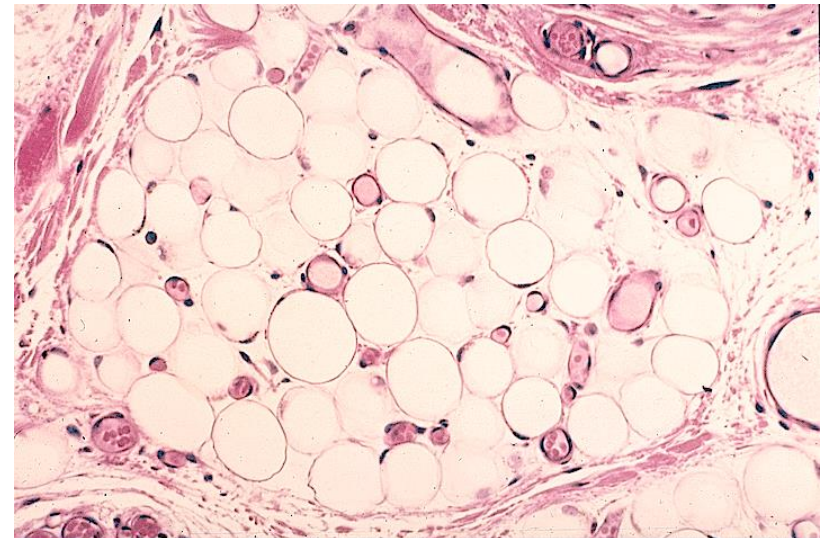
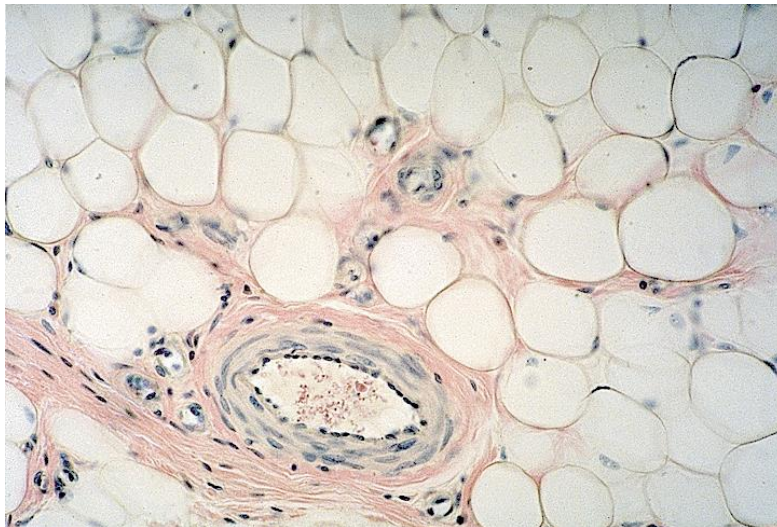
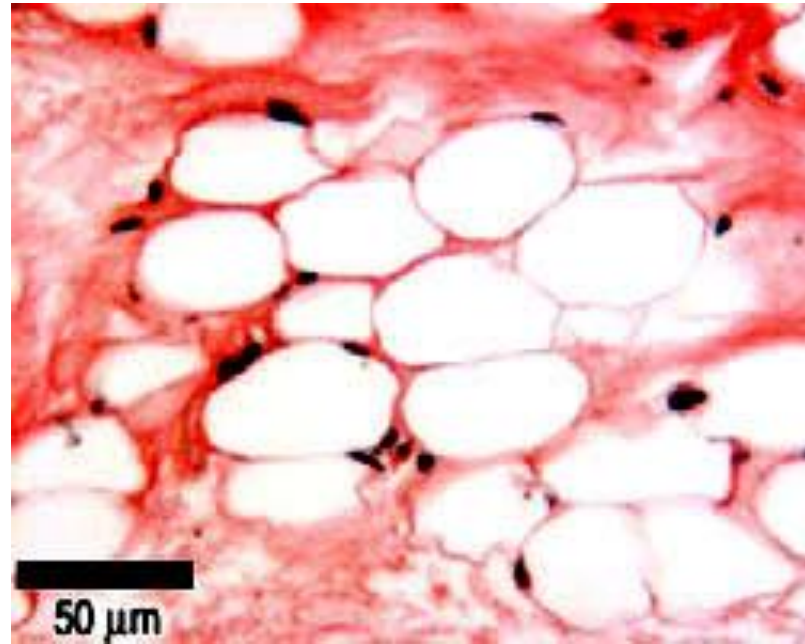
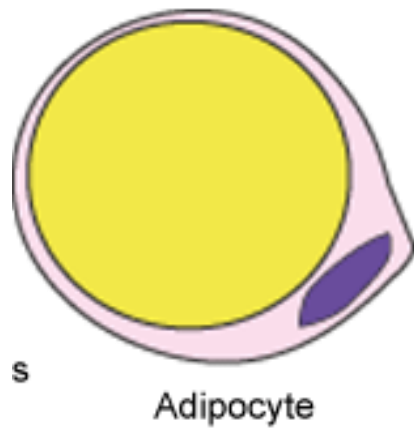


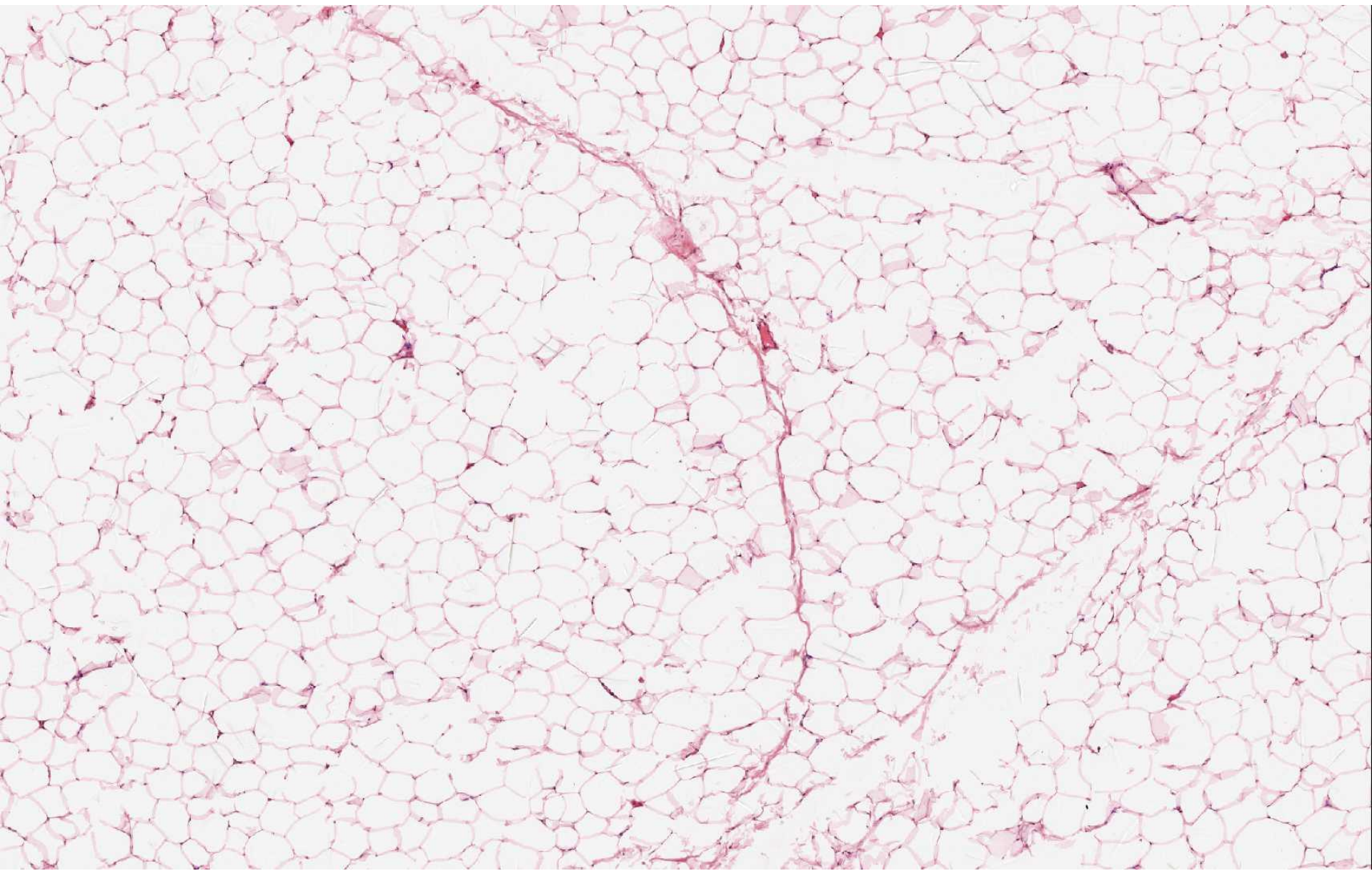
Elastic connective tissue (e.g. in wall of aorta)



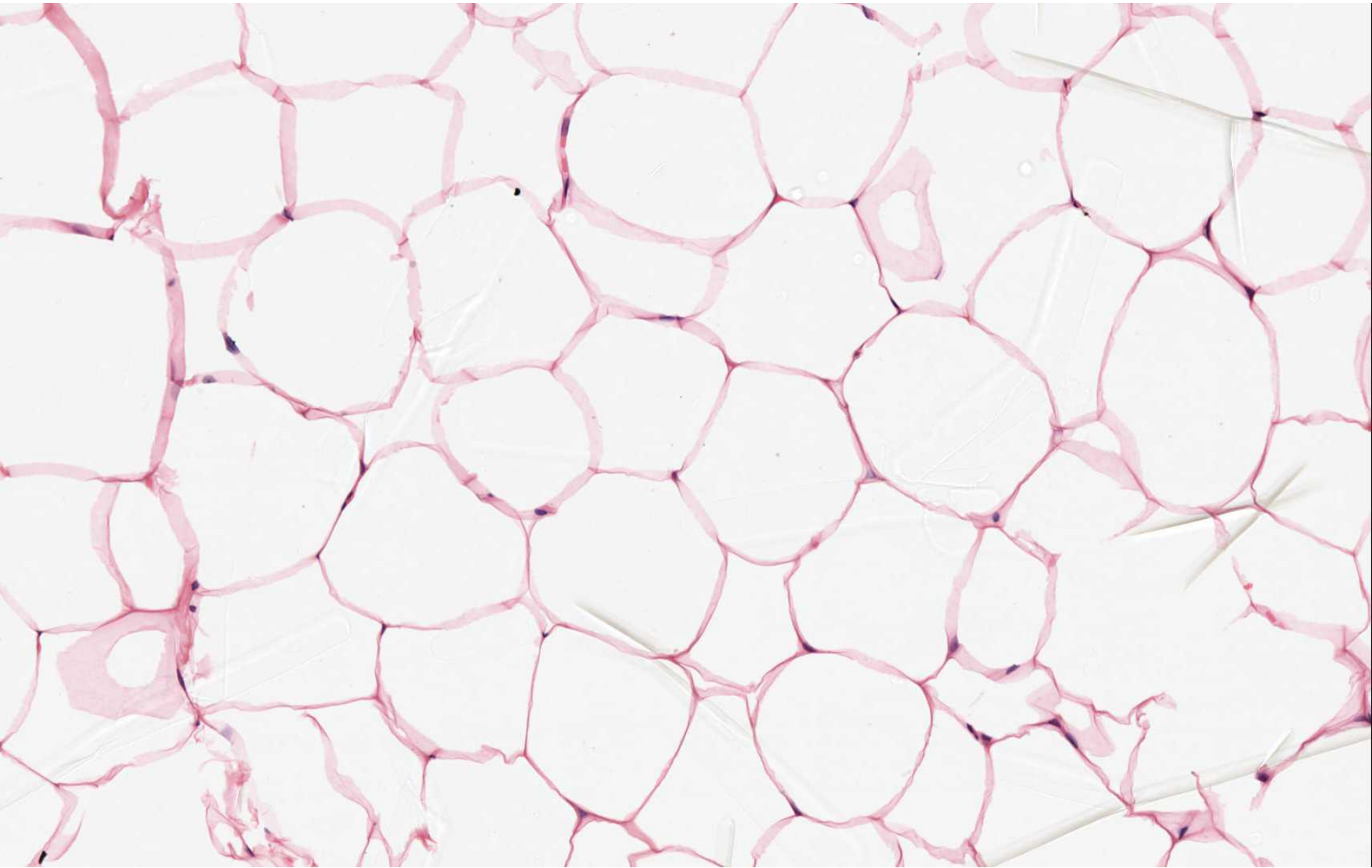
Elastic connective tissue (e.g. in wall of aorta)

Adipose tissue

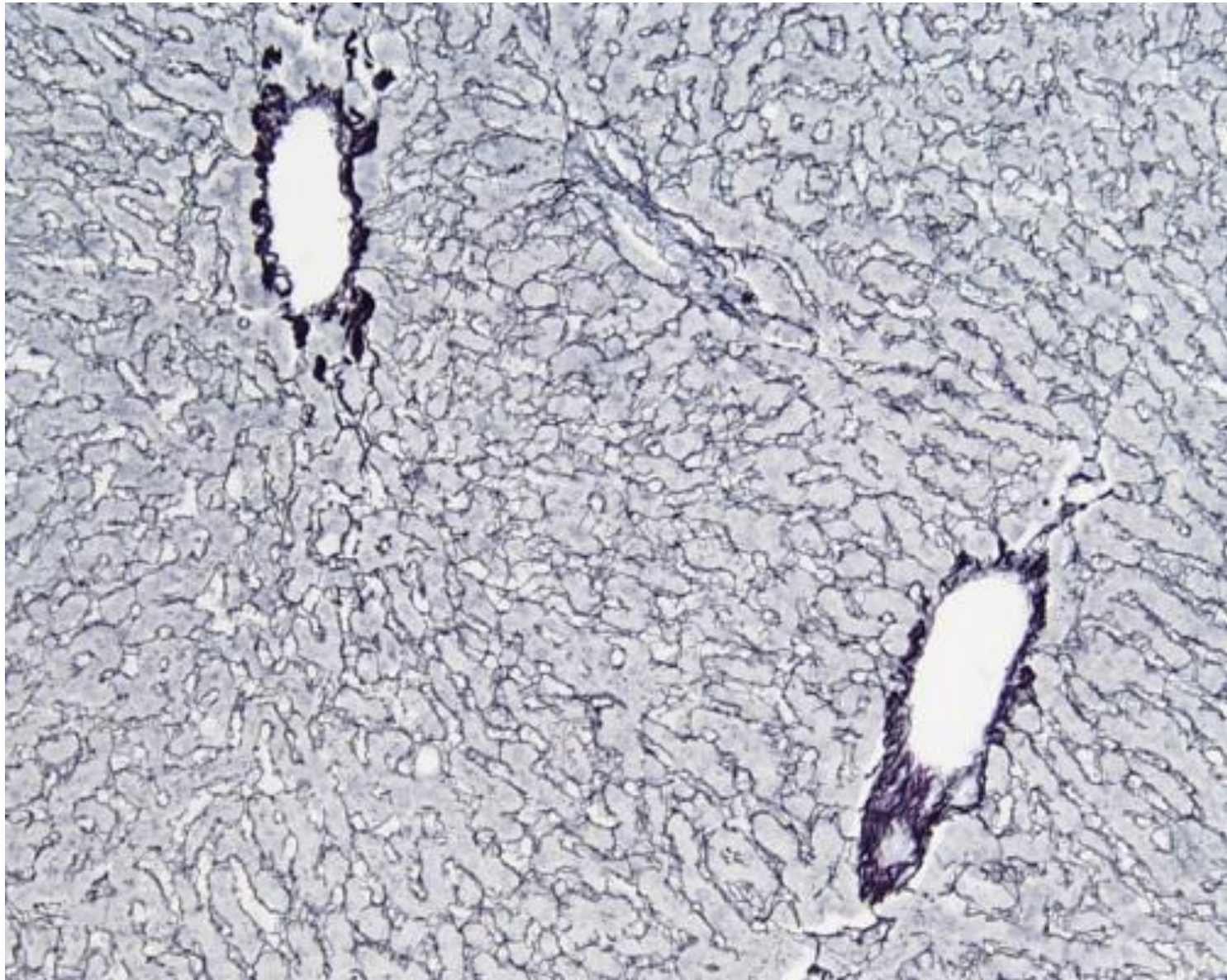




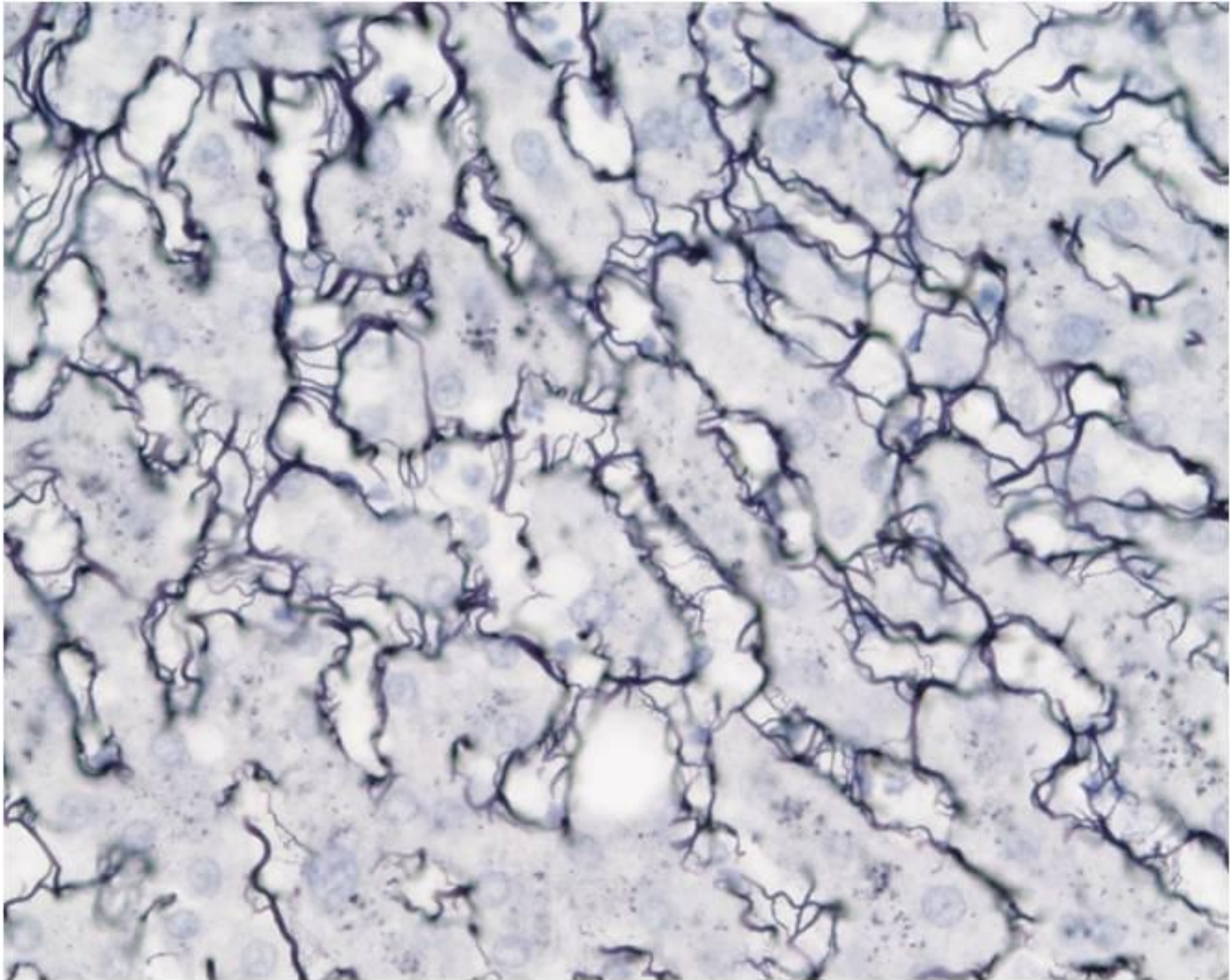
Adipose connective tissue



Adipose connective tissue

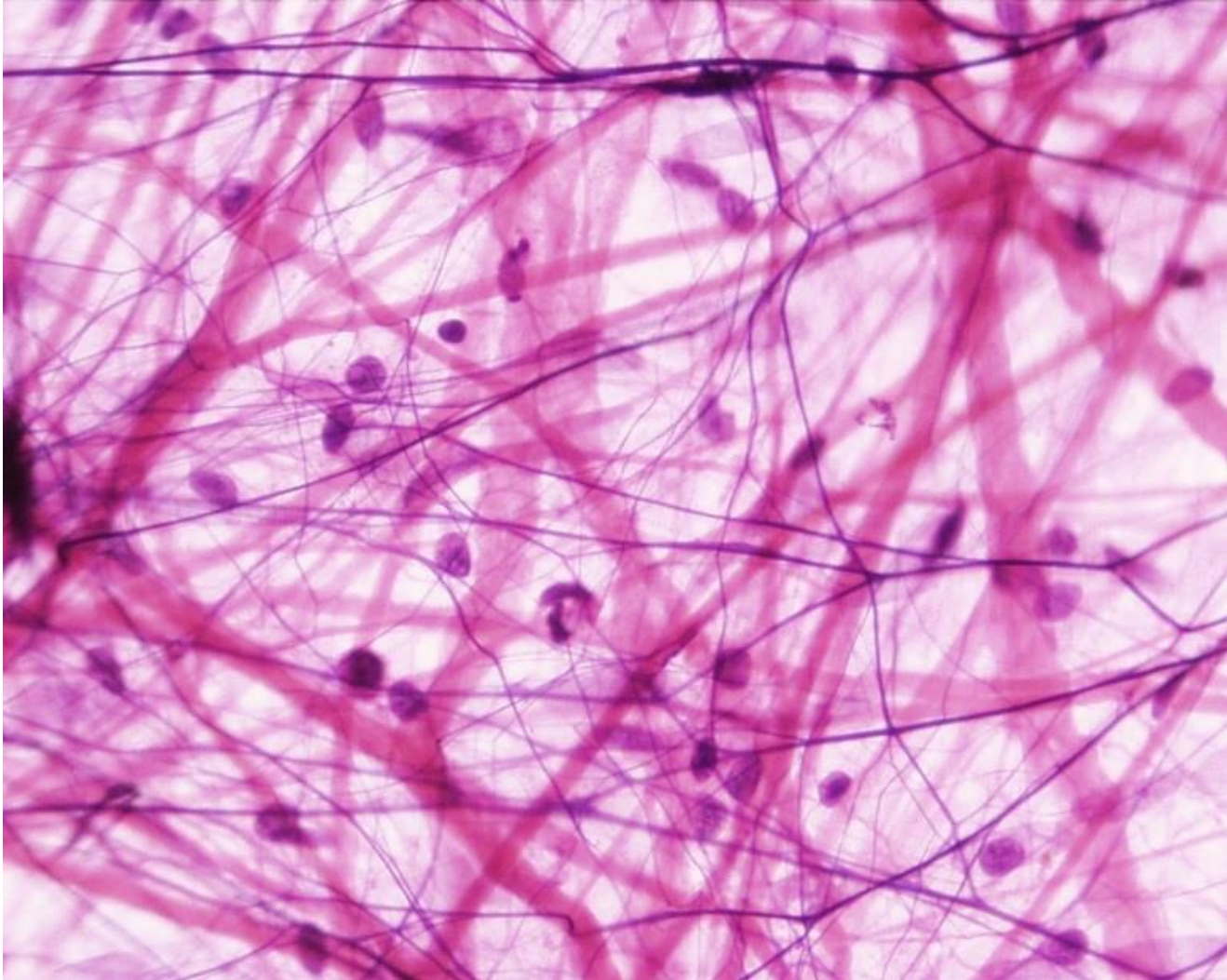


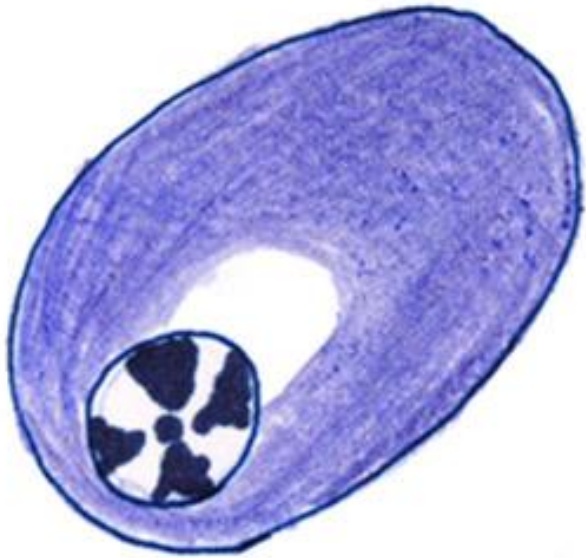
Reticular connective tissue (e.g in liver)



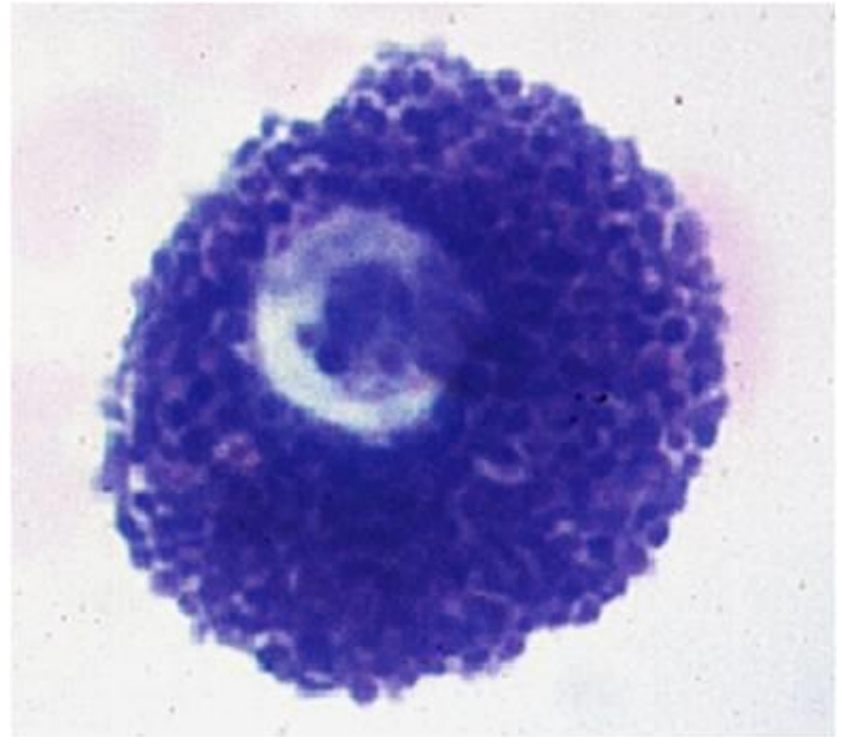
Reticular connective tissue (e.g in liver)

Loose C.T





Plasma cell



Mast cell