



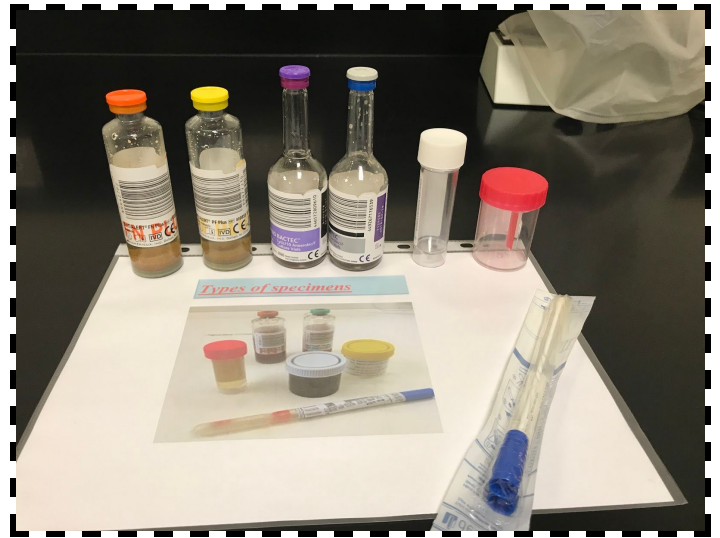
Microbiology lab Foundation block 2018

هذا العمل لا يغني عن المصدر الأساسي

ملاحظات مهمة:

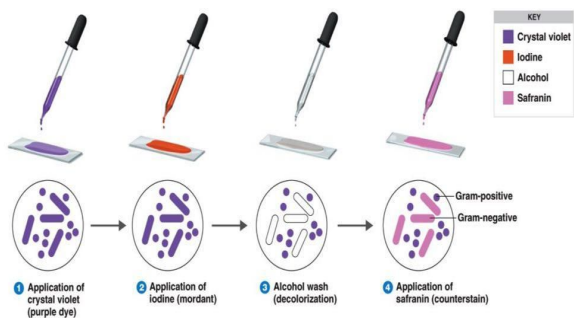
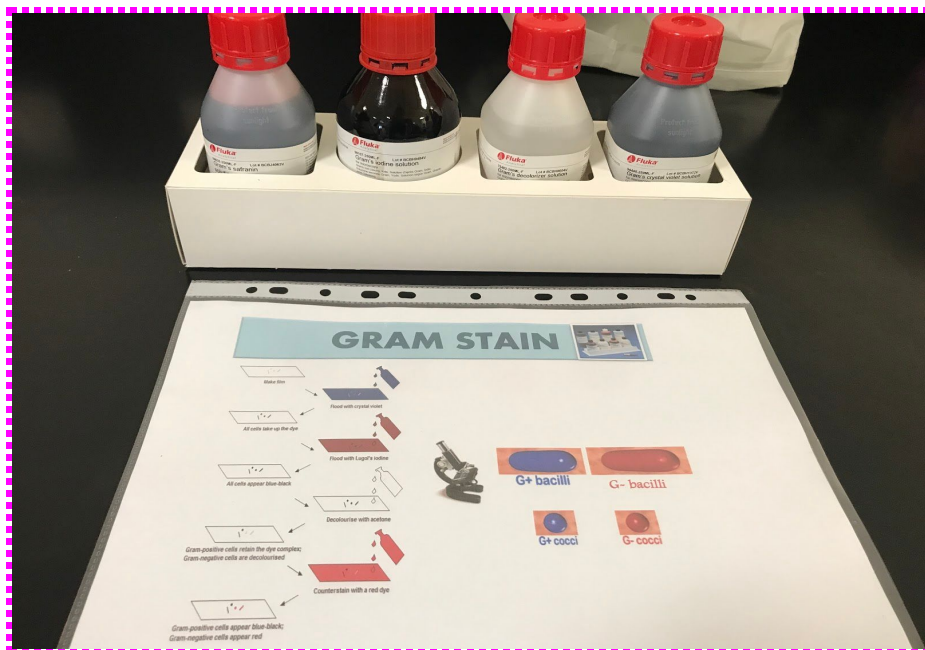
- 1- المرجع الأساسي هو السلايدات.
- 2- المايكرو فقط 1 ستيشن بالإختبار.
- 3- الملف هذا يفضل أن يكون للمراجعة فقط.
- 4- الصور بالإطار الأزرق هي من لآب قروب A,B أما باللون الأرجواني هو من لآب قروب F.
- 5- في الإختبار ركز بالسلايد الي بييجيك لأن بعضها تخدع.
- 6- شكر خاص ل جهاد العربي على المقاطع التوضيحية. ضيف شرف (:
- 7- بالتوفيق للجميع.

Types of specimens:

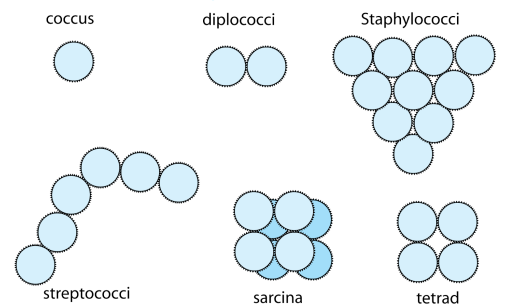


(Bacteriology)

Gram stain



Arrangements of Cocci



Bacterial culture media



E.g. for blood agar

- Q1/ Name the medium : Blood agar
Q2/ Name its imp ingredient (constituent) : blood
Q3/ Name its main use: Culture and isolate bacteria.

Read the table in slide 21.

Macconkey's agar



Lactose fermenting colonies
E.coli






Non-lactose fermenting colonies
salmonella

توضيح أكثر بالنسبة لهالصفحة:

https://drive.google.com/open?id=11iBhIRacRQd7vhPVxXUKms8rO-_Mgul

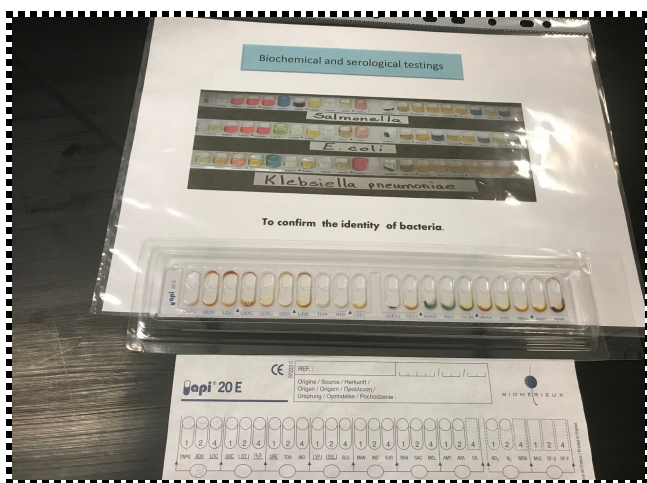
Hemolytic reaction

		
Beta hemolytic Streptococcus colonies <i>st.pyogenes</i>	Alpha hemolytic Streptococcus colonies <i>st.pneumoniae</i>	Gamma hemolytic Streptococcus colonies <i>Enterococcus faecalis</i>

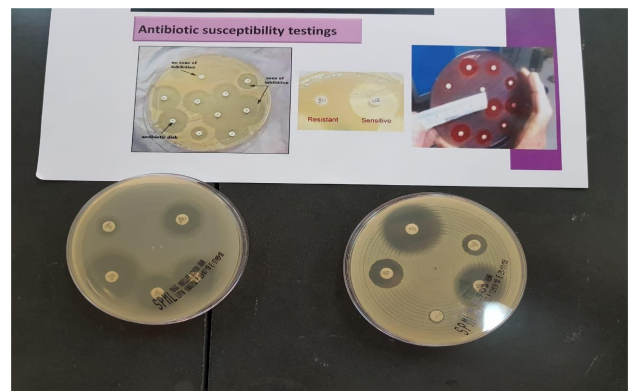
*التفريق بين جاما و بيتا نرفع الطبق للنور اذا كان في أجزاء شفافة فهو بيتا, الألفا يكون باين لونه الأخضر أو بيكون غامق.
- فيديو للفهم:

<https://drive.google.com/open?id=1-7qOrFEIvn5gx100cebj-fhfU7MUsmX3>

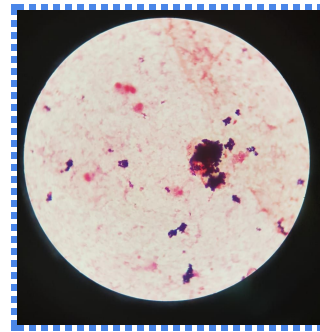
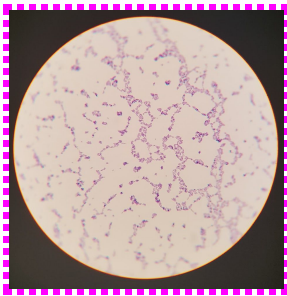
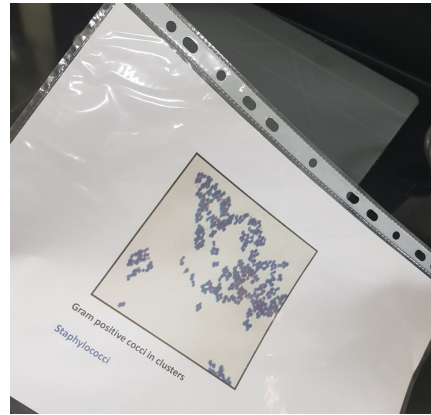
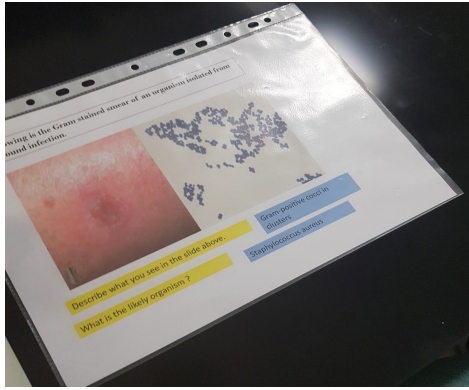
-Biochemical testing:



-Antibiotic susceptibility testing:



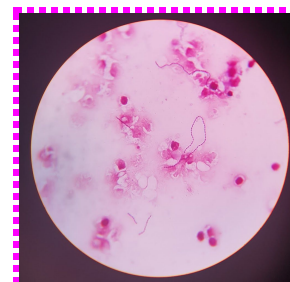
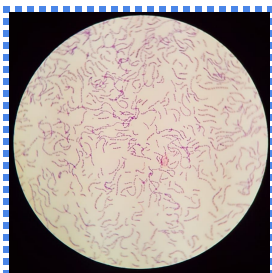
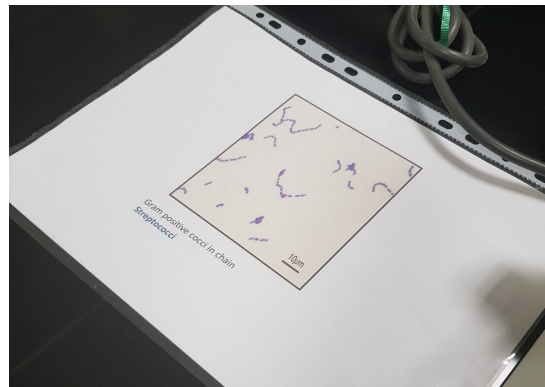
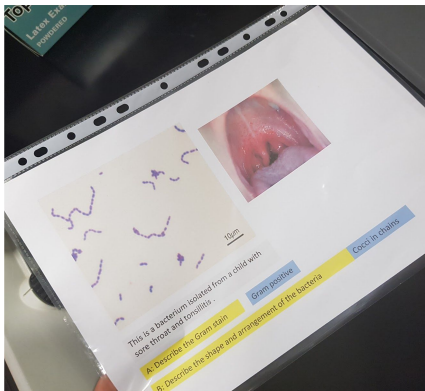
Gram +ve cocci in clusters



Q1/ Describe what you see in slide? Gram +ve in clusters

Q2/ what is the likely organism? *Staphylococcus aureus* → ممكن يعطيك كيس ويذكر ان فيه ان فيكشن غالبا هالبيكتيريا بيكون الجوايز

Gram +ve cocci in chains

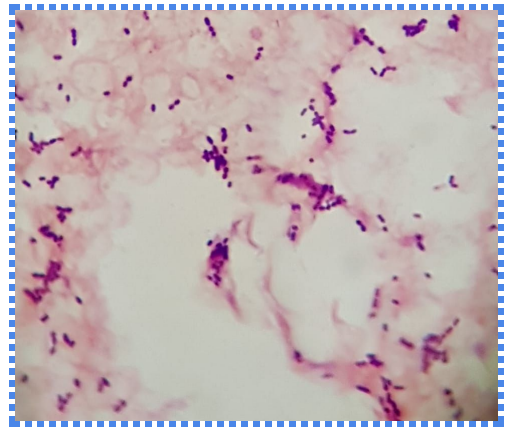
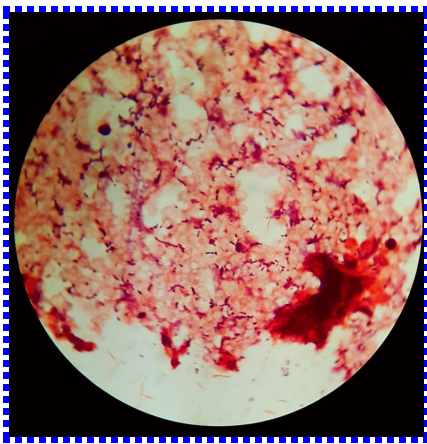
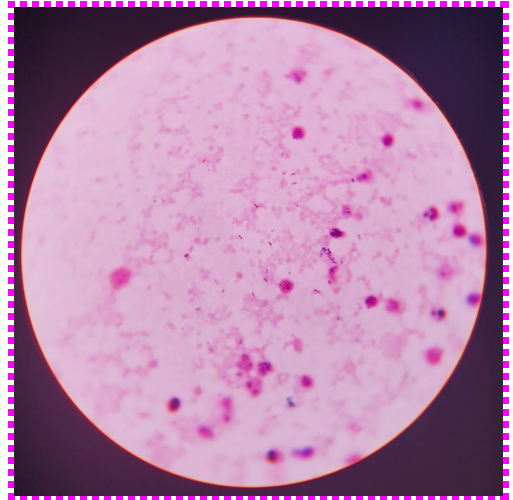
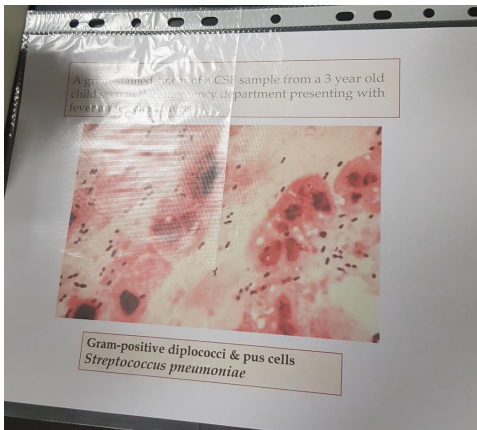


Q1/ Describe the Gram stain? Gram positive

Q2/ Describe the shape and arrangement of the bacteria? Cocci in chains

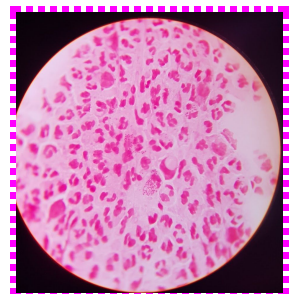
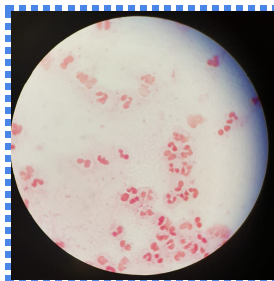
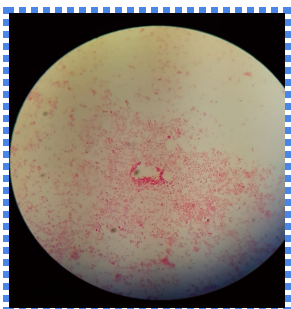
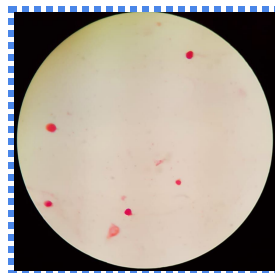
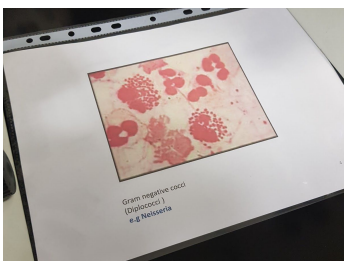
Q3? Most likely? *Streptococci* التمشين فريد للبيزيتف كوككاي ف ما يهم اذا كان اللون مايل للبنك مثل سلايد البنات ركزواع الشكل كانه سبحة

Gram +ve in chains (pairs, Diplococci) cont.



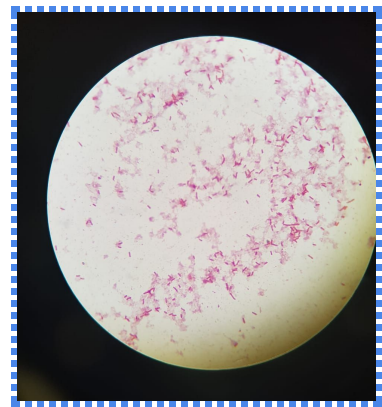
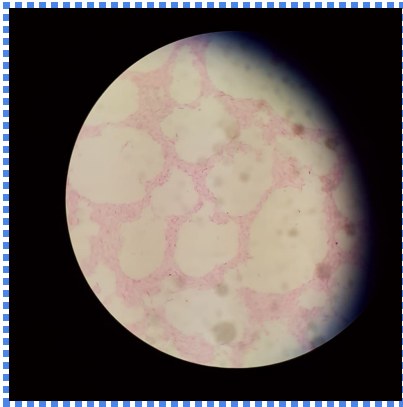
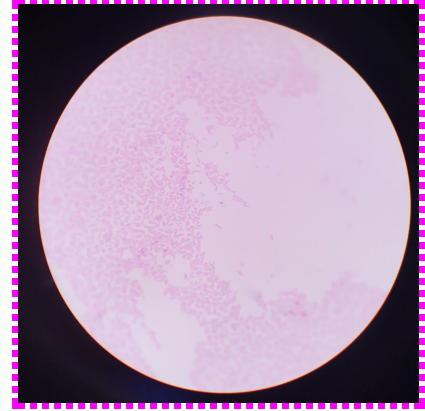
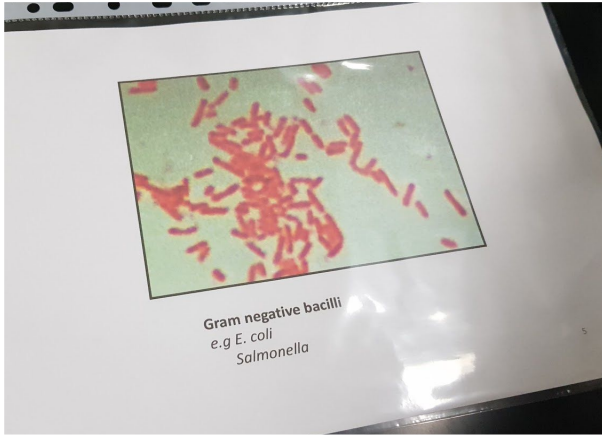
Gram positive diplococci & pus cells, most likely streptococcus pneumonia ... على الأغلب بيكون فيه كيس معه طبعاً
البكتيريا تغطيه التيشيو ف ركزوا ودققوا عليها وأنها بوزيتف من اللون لأن في نيكاتف

Gram -ve cocci (diplococci, in pairs)

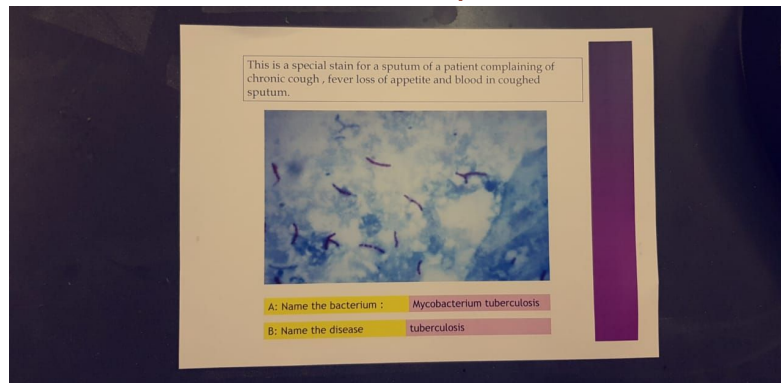


Gram negative cocci (diplococci),

Gram -ve Bacilli



Unusual Gram positive



** Gram positive bacilli ما ذكرت بالاسلايدات ولا جت باللاب لجميع القروبات ولكن هي تشبه النيكتف بالشكل بس اللون يختلف. لكن بالآوسبي خلوا النيكتف أولوية دائما.

Foundation - CNS - Streptococci			
S/N	MATERIAL	IMAGE	QTY
1	Specimen collecting bottle and container		1 unit
2	Inoculated culture media: Blood Agar, Chocolate Agar, MacConkey Agar, TCBS Agar		Four each
3	MacConkey culture plate showing LFC colonies		1
4	MacConkey culture plate showing RFC colonies		1
5	Sensitivity testing		1
6	SDA culture plate (Aspergillus sp.)		1
7	SDA culture plate showing yeast		1
8	Inoculated agar with 1 unit of bacteria showing growth of Streptococcus faecalis		1
9	Blood culture plate showing Streptococcus pneumoniae		1
10	Normal CSF tube		1
11	Turbid CSF tube		1

Virology

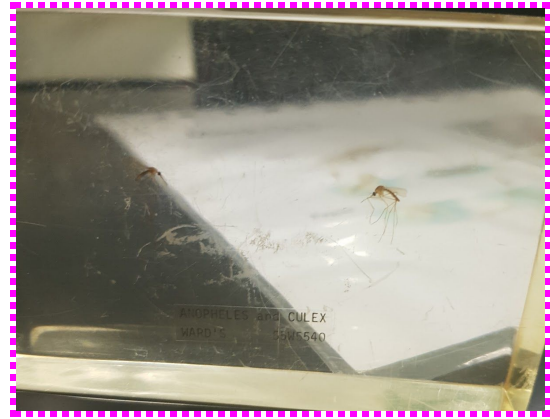
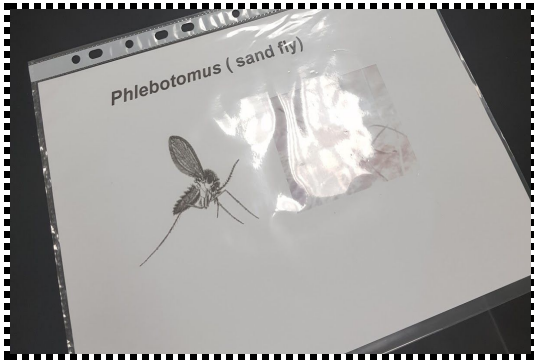
سلايدات الدكتور كافية.

Parasitology

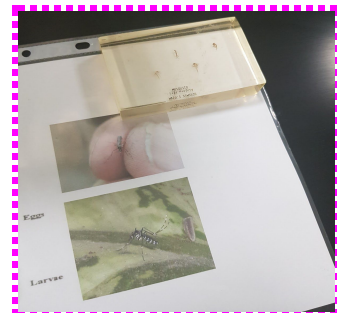
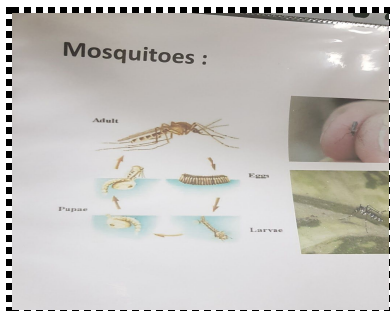
Ascaris lumbricoides

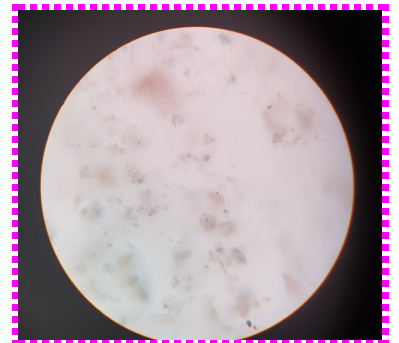
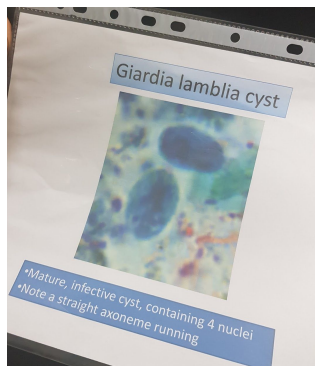
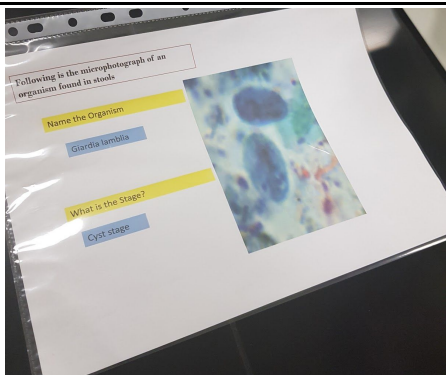
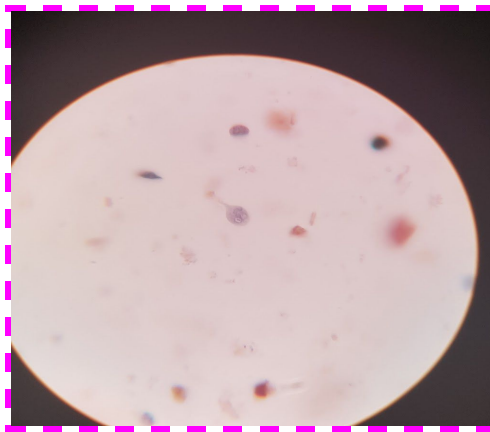
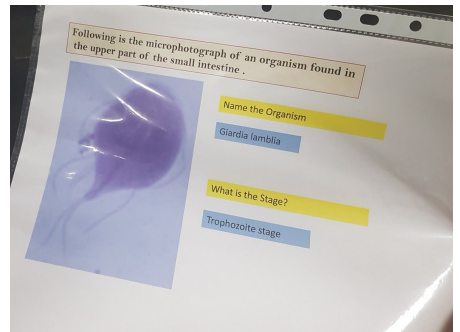
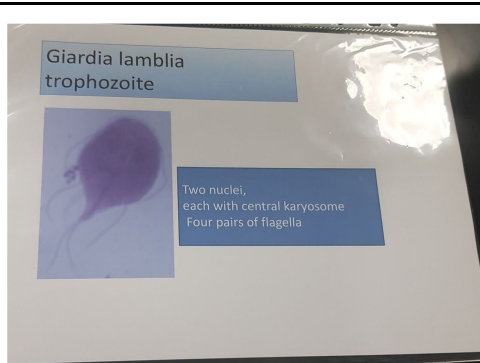
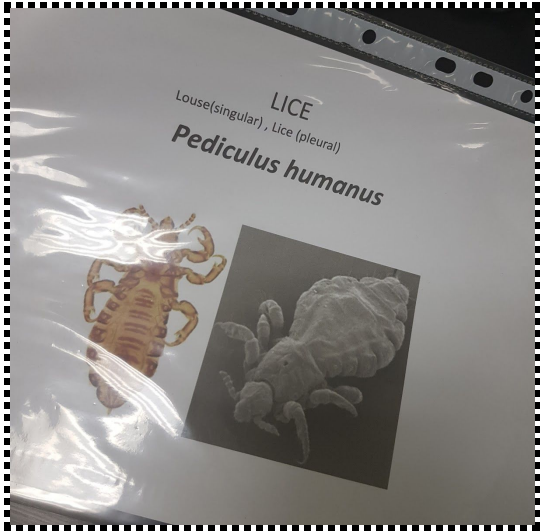


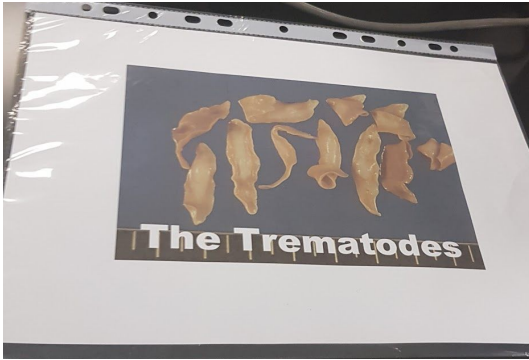
Phlebotomus



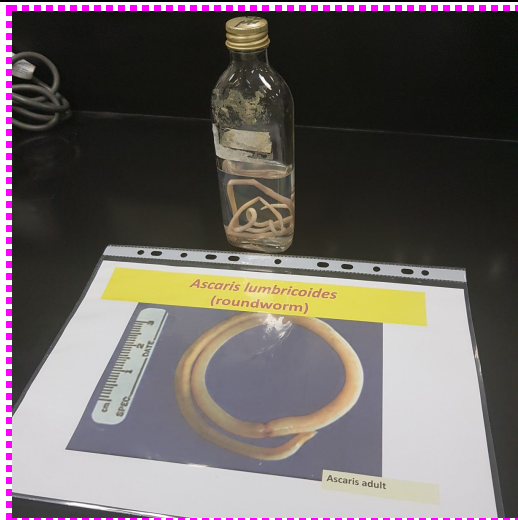
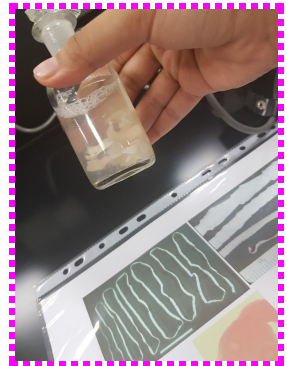
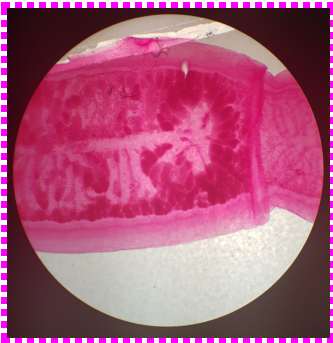
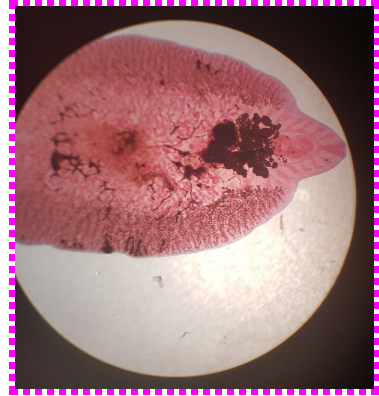
Mosquitoes:







->



Mycology

