

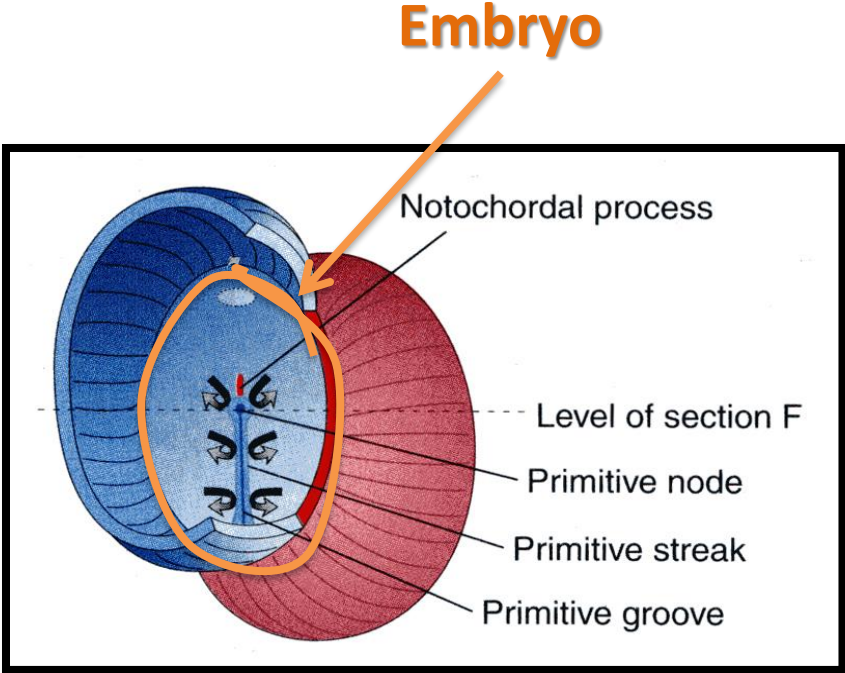
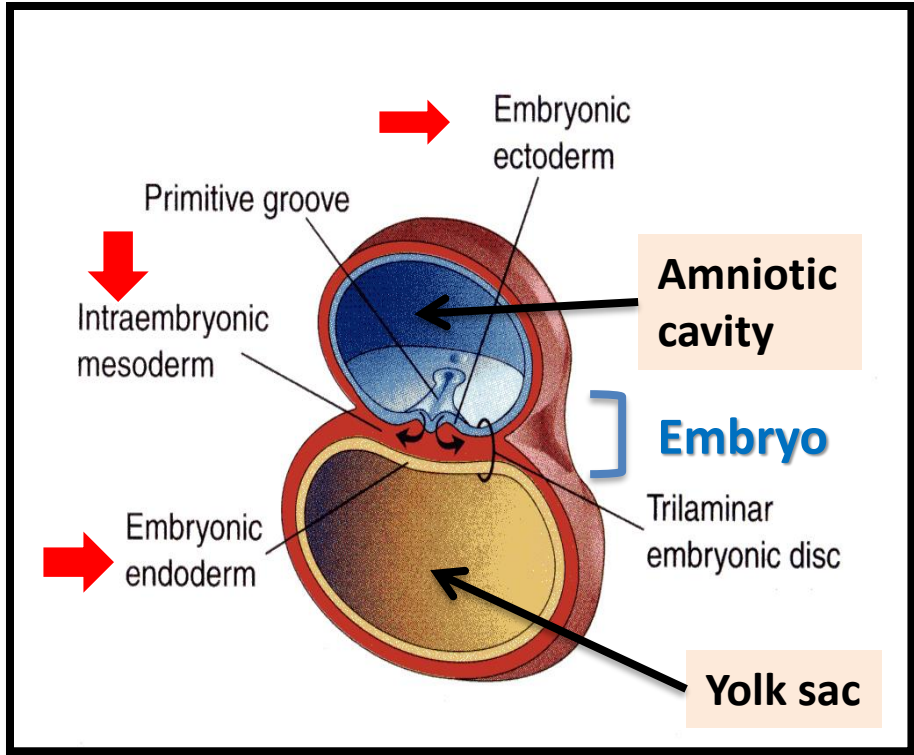
# **• DEVELOPMENT OF SKELETAL & MUSCULAR SYSTEM**

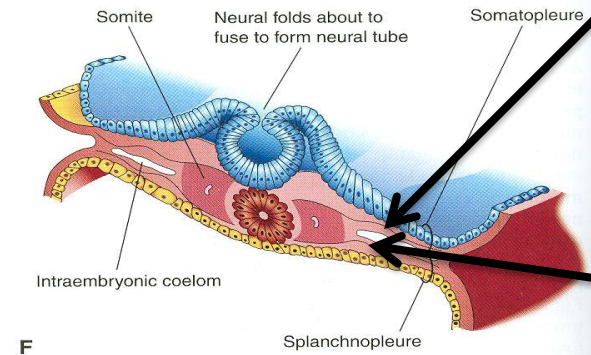
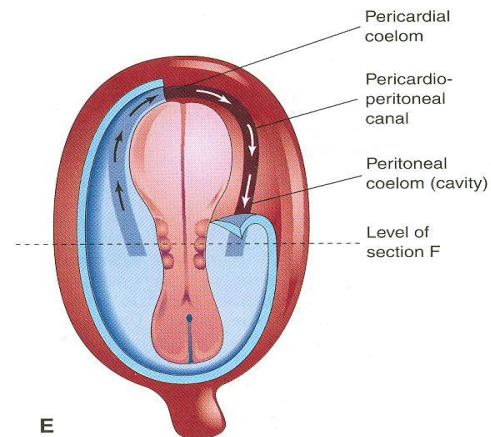
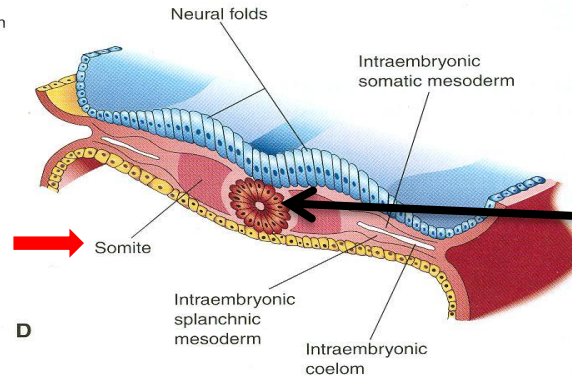
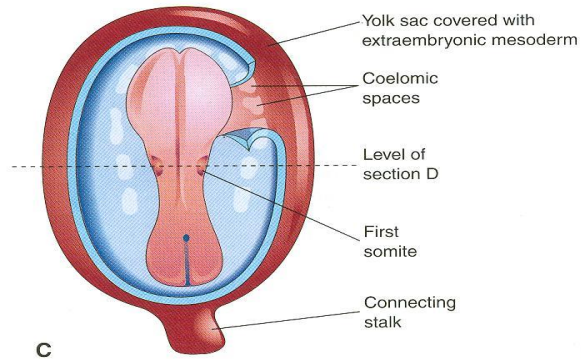
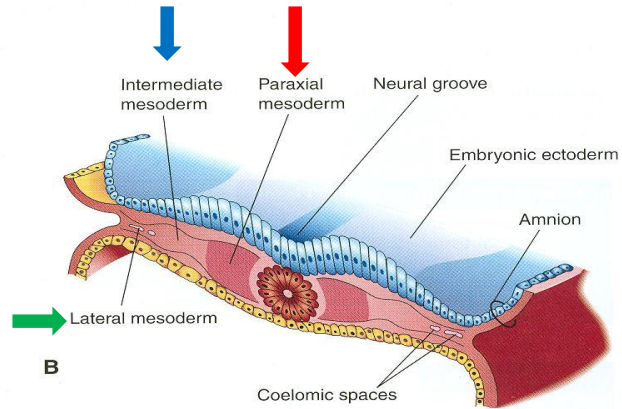
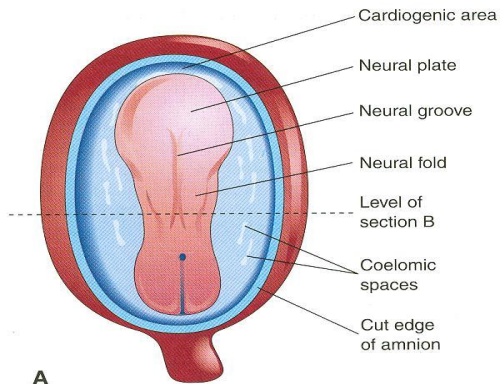
**Prof. Ahmed Fathalla Ibrahim**  
**Professor of Anatomy**  
**College of Medicine**  
**King Saud University**  
**E-mail: [ahmedfathala@hotmail.com](mailto:ahmedfathala@hotmail.com)**

# OBJECTIVES

*At the end of the lecture, students should be able to:*

- List the different parts of mesoderm and the different divisions of somites.
- Differentiate bones according to their embryological origin and mode of ossification.
- Describe the ossification of long bones.
- Describe the main steps for development of limbs.
- Differentiate muscles according to their embryological origin.





**Notochord:**  
stimulates neural tube formation

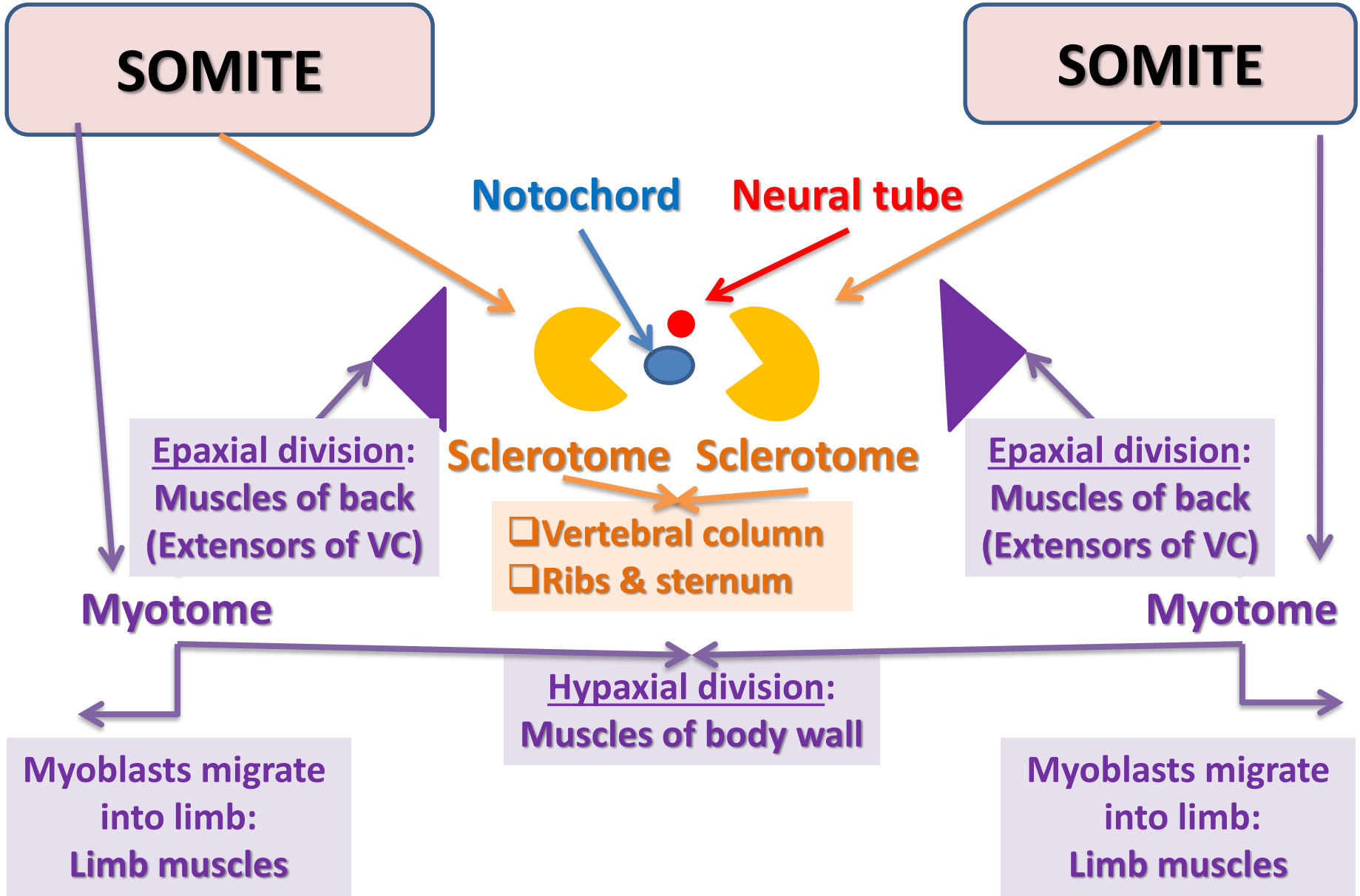
**Somatic mesoderm**

**Splanchnic mesoderm**

# INTRAEMBRYONIC MESODERM

- ❑ Proliferates between Ectoderm & Endoderm **EXCEPT** in the central axis of embryo where **NOTOCHORD** is found.
- ❑ Differentiates into 3 parts:
  1. **Paraxial mesoderm:** on each side of notochord.
  2. **Intermediate mesoderm**
  3. **Lateral mesoderm**
- ❑ Paraxial mesoderm divides into units (somites).
- ❑ Lateral mesoderm divides by intraembryonic coelom into:
  1. **Somatic mesoderm (between ectoderm & coelom).**
  2. **Splanchnic mesoderm (between endoderm & coelom).**





**SOMITE**

**SOMITE**

**Notochord**

**Neural tube**

Epaxial division:  
Muscles of back  
(Extensors of VC)

**Sclerotome Sclerotome**

- Vertebral column
- Ribs & sternum

Epaxial division:  
Muscles of back  
(Extensors of VC)

**Myotome**

**Myotome**

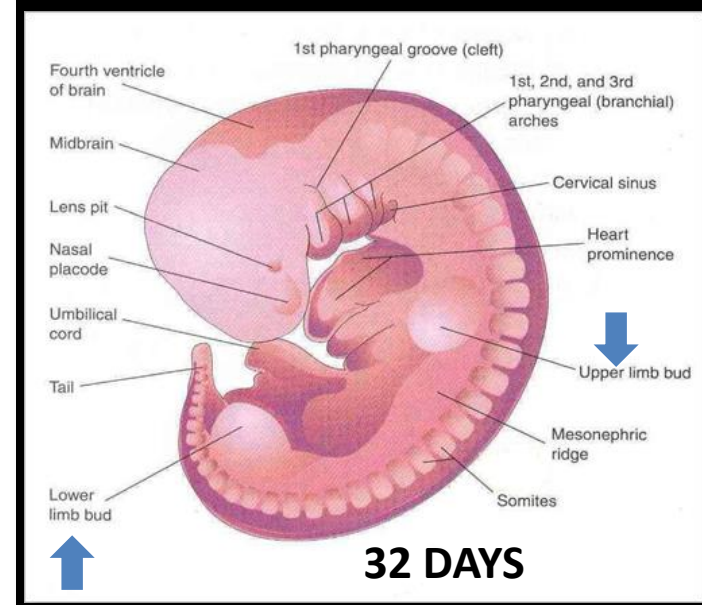
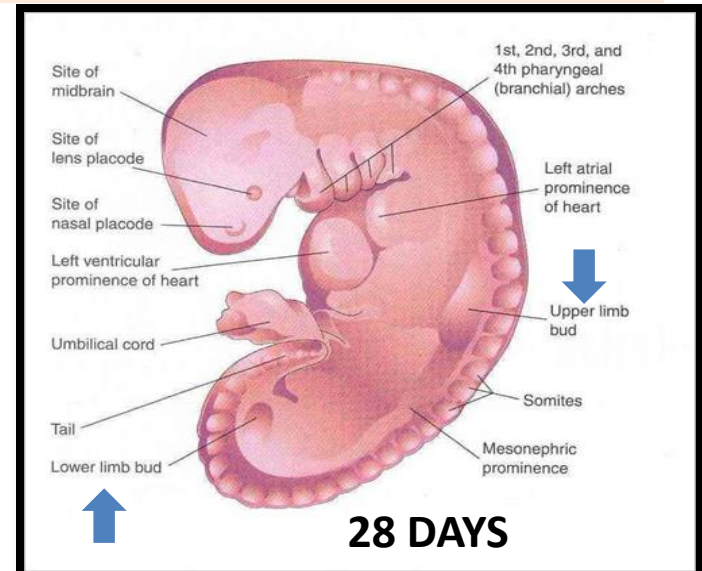
Hypaxial division:  
Muscles of body wall

Myoblasts migrate  
into limb:  
Limb muscles

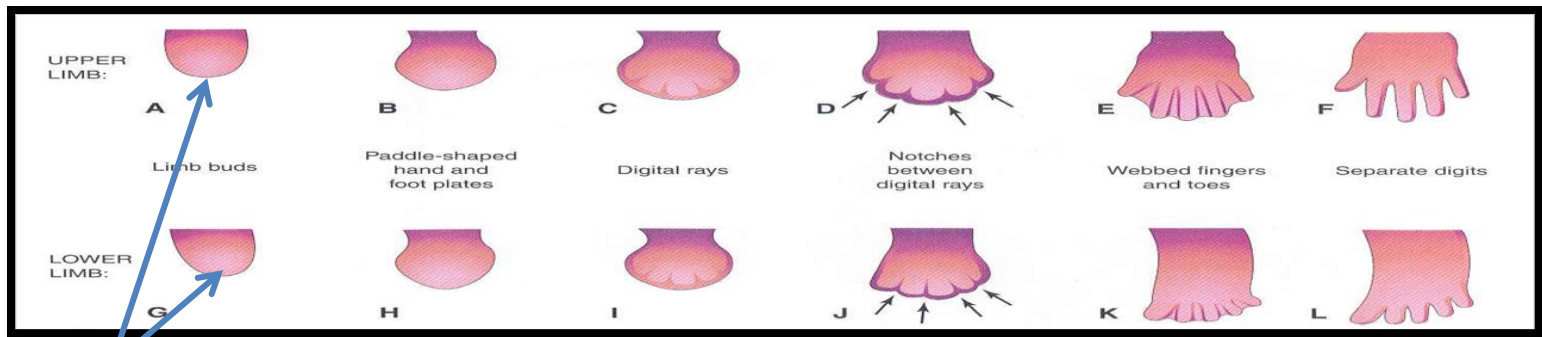
Myoblasts migrate  
into limb:  
Limb muscles

# DEVELOPMENT OF LIMBS - 1

- ❑ The limb bud appears as an elevation on the *ventrolateral body wall* resulting from proliferation of mesenchyme of the somatic layer of lateral mesoderm.
- ❑ Each limb bud is surrounded by an area of ectoderm.
- ❑ Upper limb buds appear at **day 26** opposite the lower cervical segments.
- ❑ Lower limb buds appear at **day 28** opposite the lumbar & sacral segments.



# DEVELOPMENT OF LIMBS - 2

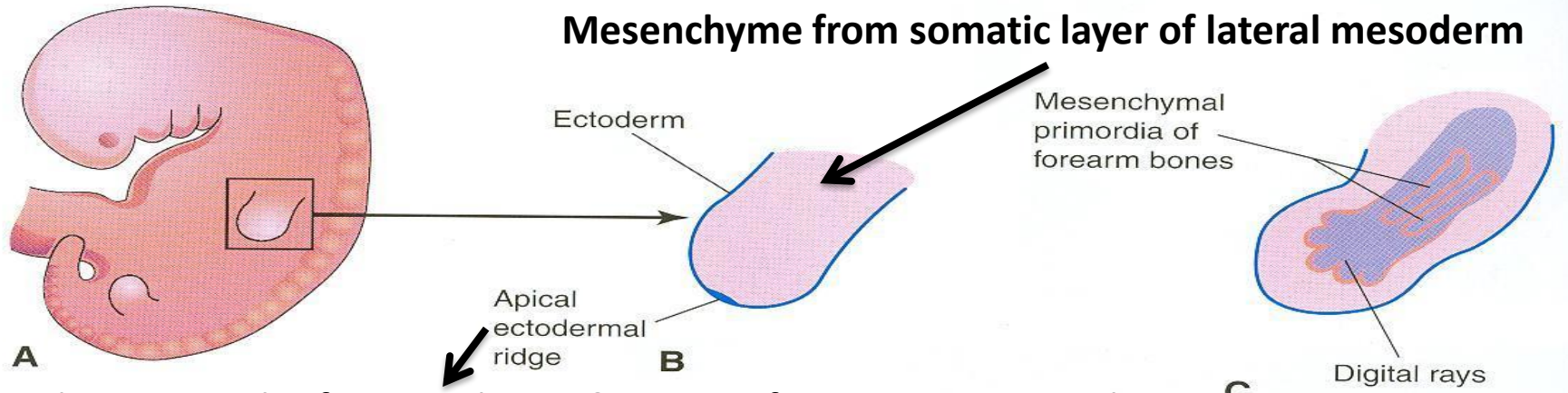


- ❑ **A & G:** Apical ectodermal ridge: appears at the apex of limb bud and stimulates proliferation of mesenchyme and elongation of limb bud.
- ❑ **B & H:** Distal ends of buds flatten into paddle-like hand & foot plates.
- ❑ **C & I:** Digital rays: appear as mesenchymal condensations that outline the patterns of digits.
- ❑ **D & J:** Mesenchyme between rays disappears to form notches.
- ❑ **E & K:** Digits form inside rays, elongate & appear webbed.
- ❑ **F & L:** Mesenchyme between digits disappear to separate them.

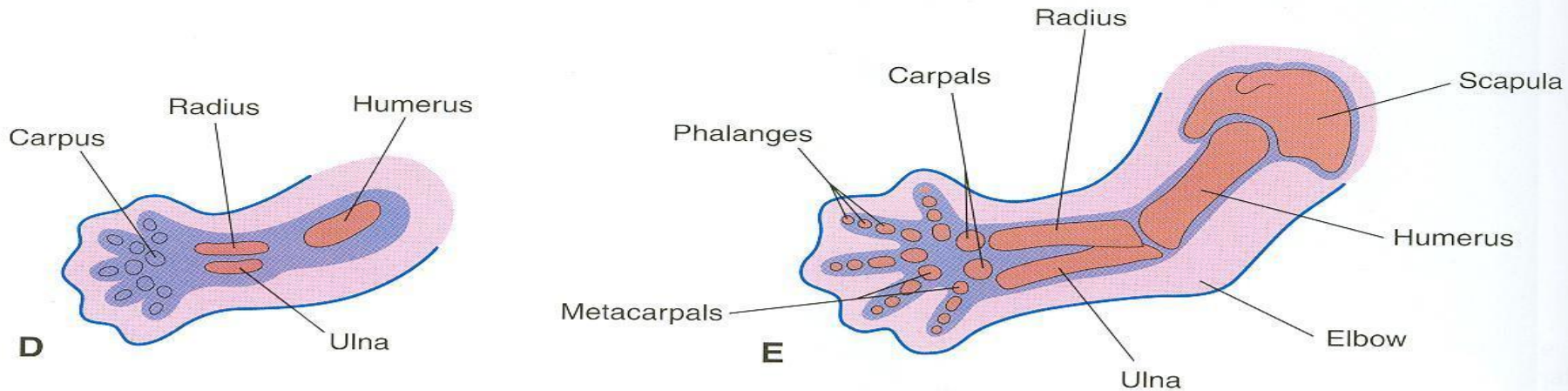


Loose mesenchyme
  Condensed mesenchyme
  Cartilage

### Mesenchyme from somatic layer of lateral mesoderm



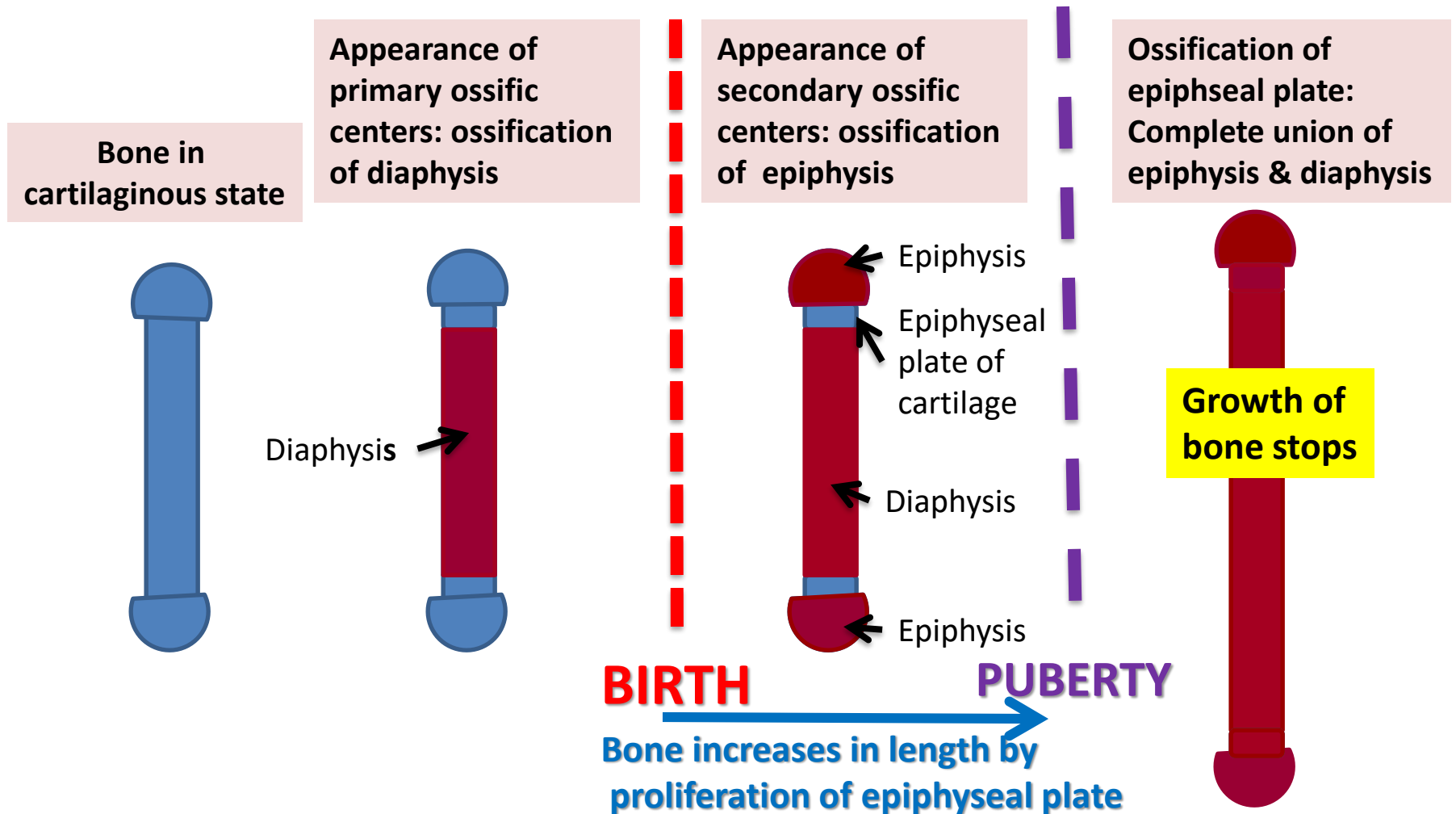
Induces growth of mesenchyme & its transformation into cartilage



**Cartilage ossifies by:  
Endochondral ossification**

**Myoblasts migrate from myotomes to form:  
Muscles of limbs**

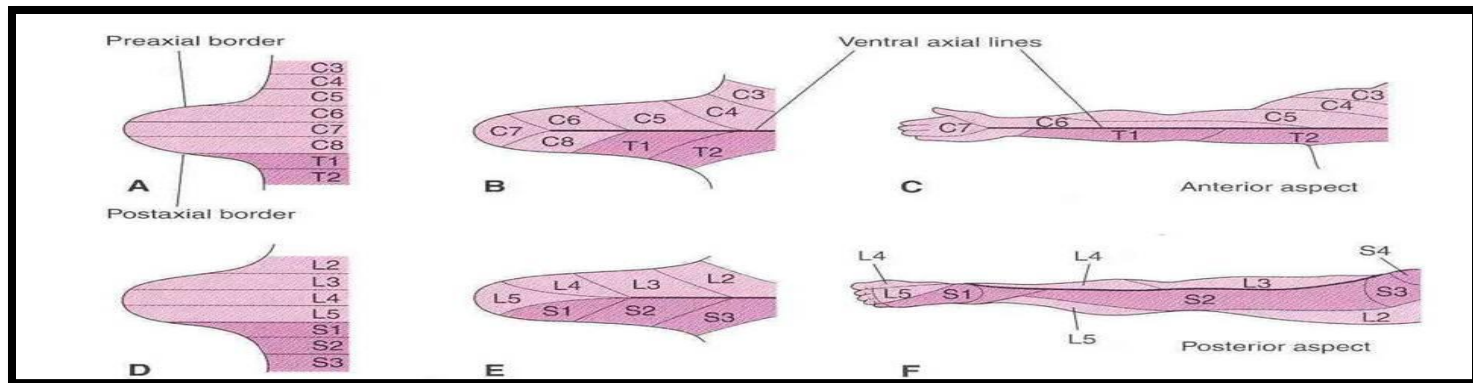
# OSSIFICATION OF LONG BONES



Bone age is a good index of general maturation. Bone age is determined by:

1. Appearance of ossific centers in diaphysis & epiphysis (specific for each bone & sex)
2. Disappearance of epiphyseal plate (specific for each bone & sex)

# DEVELOPMENT OF LIMBS - 3



- Originally, limb buds were at right angle of the trunk with:
  - Cranial (preaxial) & caudal (postaxial) borders: radius and tibia are preaxial bones.
  - Ventral & dorsal surfaces: flexor muscles are ventral.
- During **7<sup>th</sup> week**, adduction of limb buds occurs with 90° rotation:
  - In upper limb, rotation occurs laterally: radius is lateral & flexor muscles are anterior.
  - In lower limb, rotation occurs medially: tibia is medial & flexor muscles are posterior.

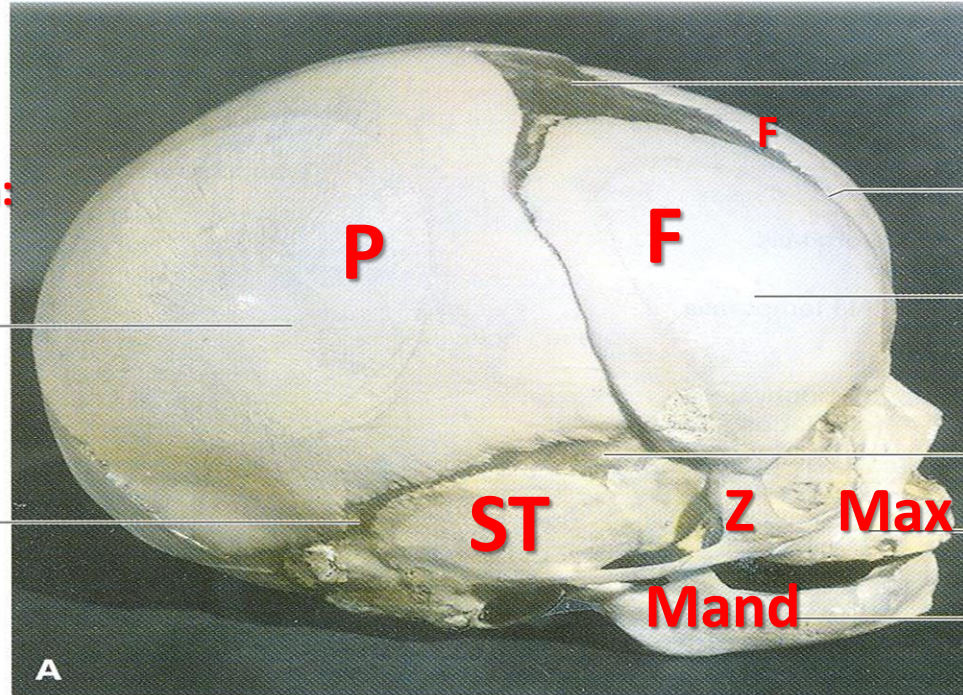




**Bones of skull that ossify by intramembranous ossification:**

1. **F = Frontal**
2. **P = Parietal**
3. **Z = Zygomatic**
4. **ST = Squamous temporal**
5. **Mand = Mandible**
6. **Max = Maxilla**

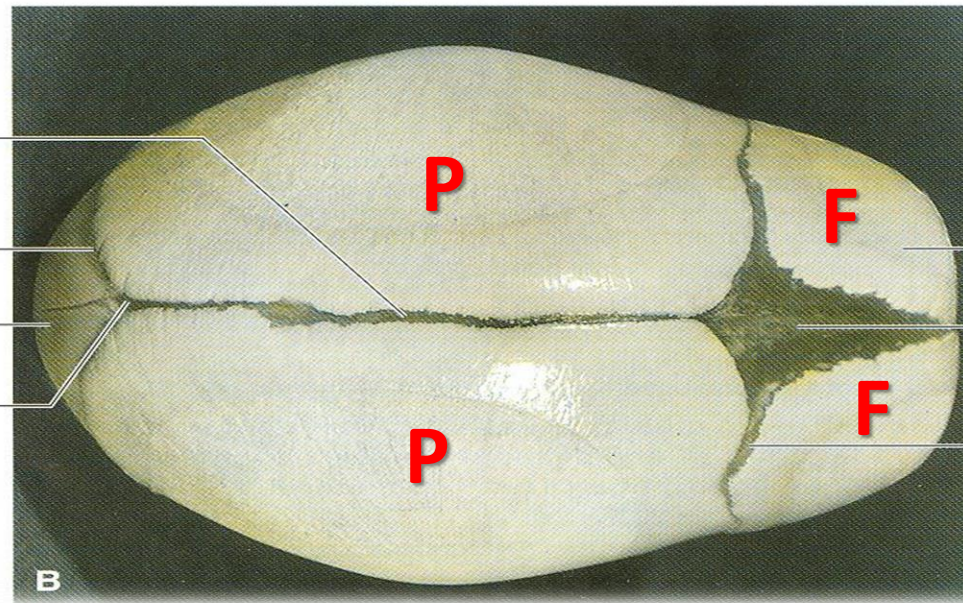
Parietal eminence  
 Posterolateral (mastoid) fontanelle



Anterior fontanelle  
 Frontal (metopic) suture  
 Frontal eminence  
 Anterolateral (sphenoid) fontanelle  
 Maxilla  
 Mandible

A

Sagittal suture  
 Lambdoid suture  
 Occipital bone  
 Posterior fontanelle

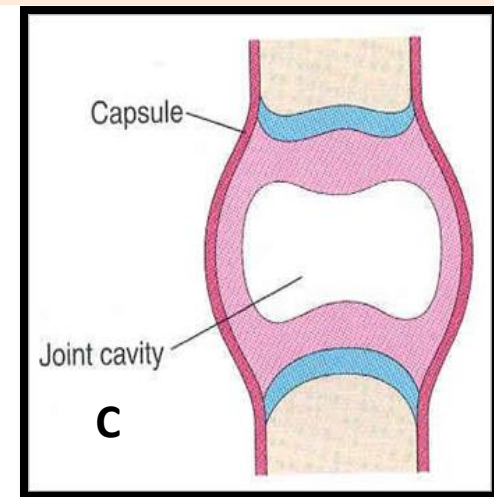
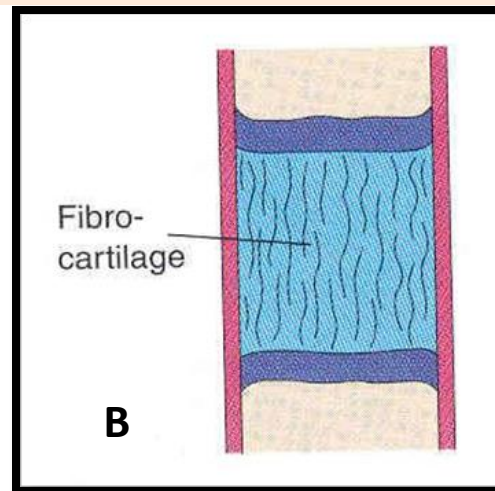
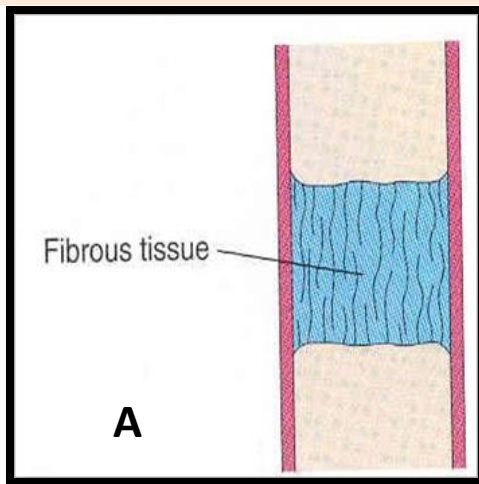


Frontal bone  
 Anterior fontanelle  
 Coronal suture

B



# JOINTS



They develop from mesoderm between bones:

- ❑ **A- In fibrous joints:** mesoderm differentiates into dense fibrous connective tissue.
- ❑ **B- In cartilaginous joints:** mesoderm differentiates into cartilage.
- ❑ **C- In synovial joints:** a synovial cavity is formed inside mesoderm; mesoderm differentiates into synovial membrane, capsule & ligaments.

# SUMMARY OF DEVELOPMENT OF BONE

All bones develop from **MESODERM**.

## □ AXIAL SKELETON:

\*Vertebrae, ribs & sternum: from sclerotomes of somites (paraxial mesoderm)

\*Skull: from mesoderm surrounding the brain

## □ APPENDICULAR SKELETON: from somatic part of lateral mesoderm

All bones ossify by endochondral ossification **EXCEPT:**

1. Some bones of skull
2. Clavicle

# SUMMARY OF DEVELOPMENT OF MUSCLES

□ All muscles develop from **MESODERM EXCEPT:**

1. Muscles of iris (eyeball)

2. Myoepithelial cells of mammary & sweat glands



□ All skeletal muscles develop from **myotomes of paraxial mesoderm EXCEPT: some head & neck muscles from mesoderm of pharyngeal arches**

# SUMMARY OF DEVELOPMENT OF MUSCLES

□ **Cardiac & smooth muscles develop from lateral mesoderm:**

**1. Cardiac muscles from: splanchnic part of lateral mesoderm**

**2. Smooth muscles:**

**\* In the wall of viscera from: splanchnic part of lateral mesoderm**

**\* In the wall of blood & lymphatic vessels from: somatic part of lateral mesoderm**

# SUMMARY OF DEVELOPMENT OF LIMBS

- ❑ Mesenchyme from somatic layer of lateral mesoderm proliferates to form limb buds.
- ❑ Apical ectodermal ridge stimulates proliferation & elongation of buds then cartilage formation.
- ❑ All bones of limbs ossify by endochondral ossification EXCEPT: clavicle.
- ❑ Muscles of limbs develop from myotomes.
- ❑ Rotation of limbs occur in opposite direction.
- ❑ Development of upper limb precedes that of lower limb.



# QUESTION 1

❑ Which one of the following group of muscles are derivatives from epaxial division of myotomes?

1. Muscles of back ←
2. Muscles of limbs
3. Muscles of viscera
4. Cardiac muscles

## QUESTION 2

Which one of the following bones ossifies by intramembranous ossification?


1. Vertebra

2. Humerus

3. Ribs


4. Mandible 

## QUESTION 3

- Regarding the ossification of long bones, which one of the following statements is correct?
1. Primary ossific centre appears after birth.
  2. Secondary ossific centre leads into ossification of diaphysis.
  3. Long bones ossify by intramembranous ossification.
  4. When epiphysis unites with diaphysis, growth of bone stops. 

## QUESTION 4

Which one of the following is the result of rotation of upper limb?

1. The tibia becomes lateral.
2. The flexor muscles become posterior.
3. The ulna becomes medial. 
4. The preaxial digit becomes medial.

The image features two large, stylized yellow roses with white and yellow petals, set against a teal background. The roses are positioned on the left and right sides of the frame. The text "THANK YOU" is written in a bold, blue, sans-serif font across the center of the image, overlapping the petals of both roses. The entire scene is enclosed within a thin orange border.

**THANK YOU**