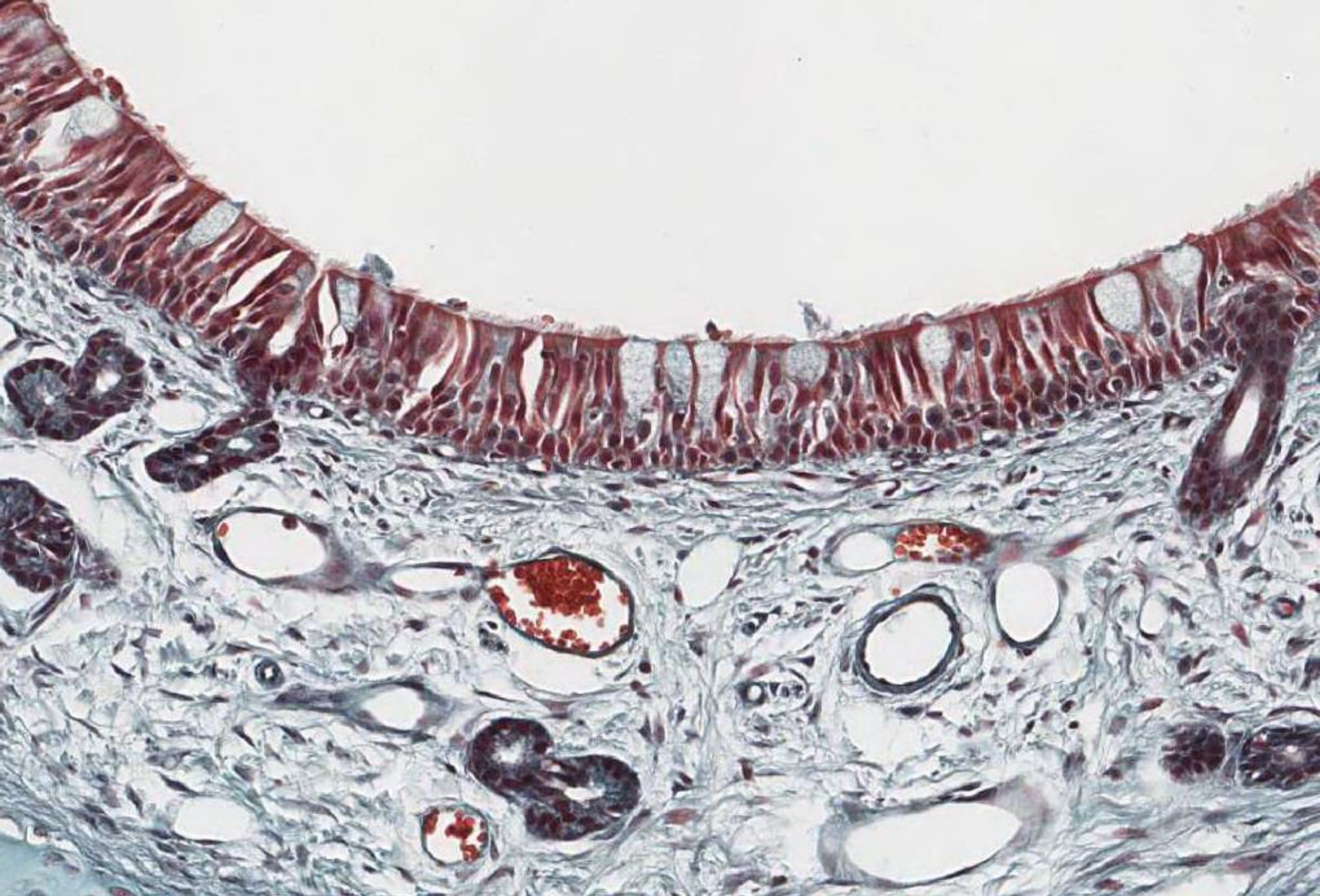


# Respiratory System

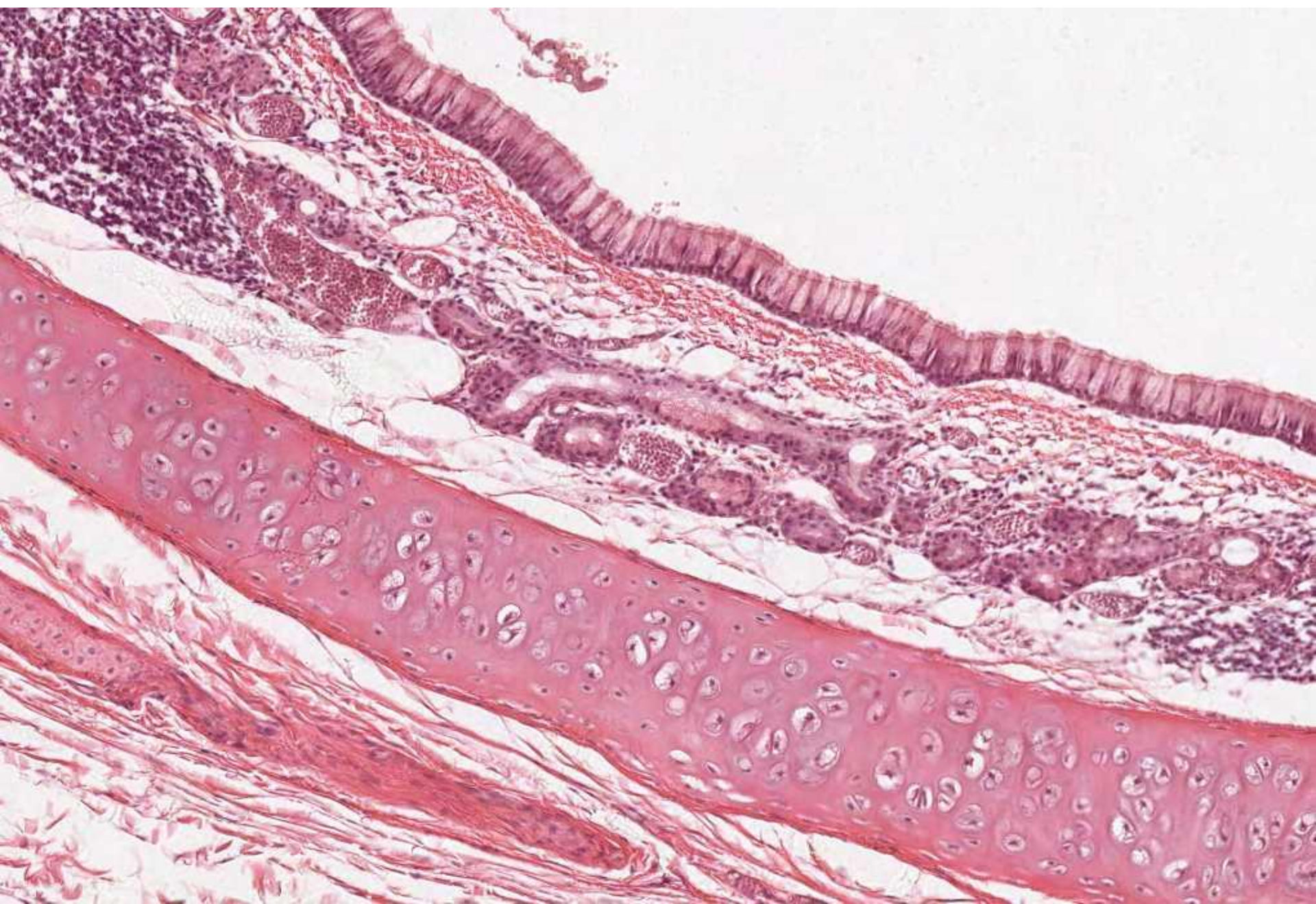
Practical Pictures



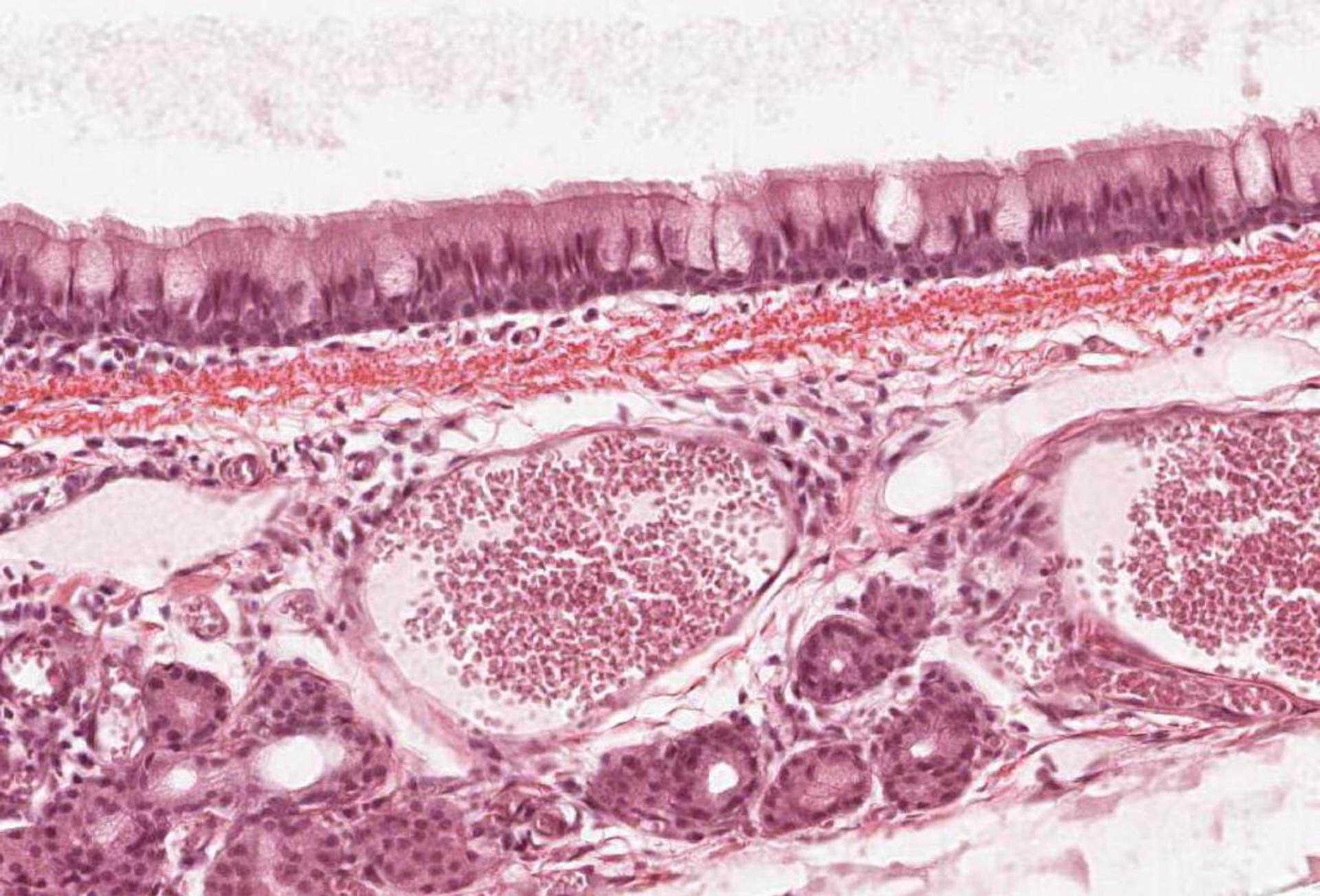
NASAL CAVITY AND SEPTUM



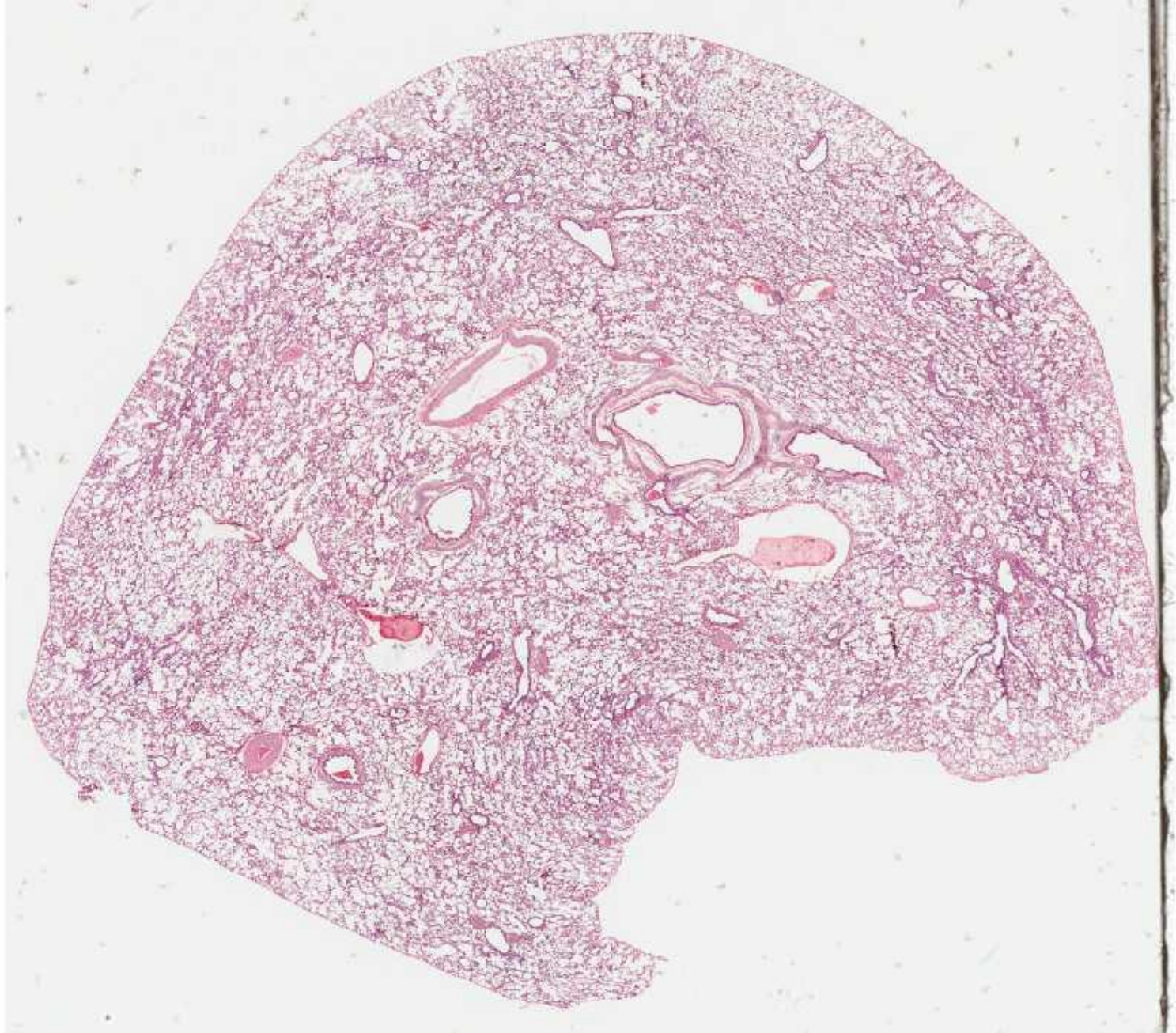
NASAL MUCOSA – respiratory epithelium and lamina propria



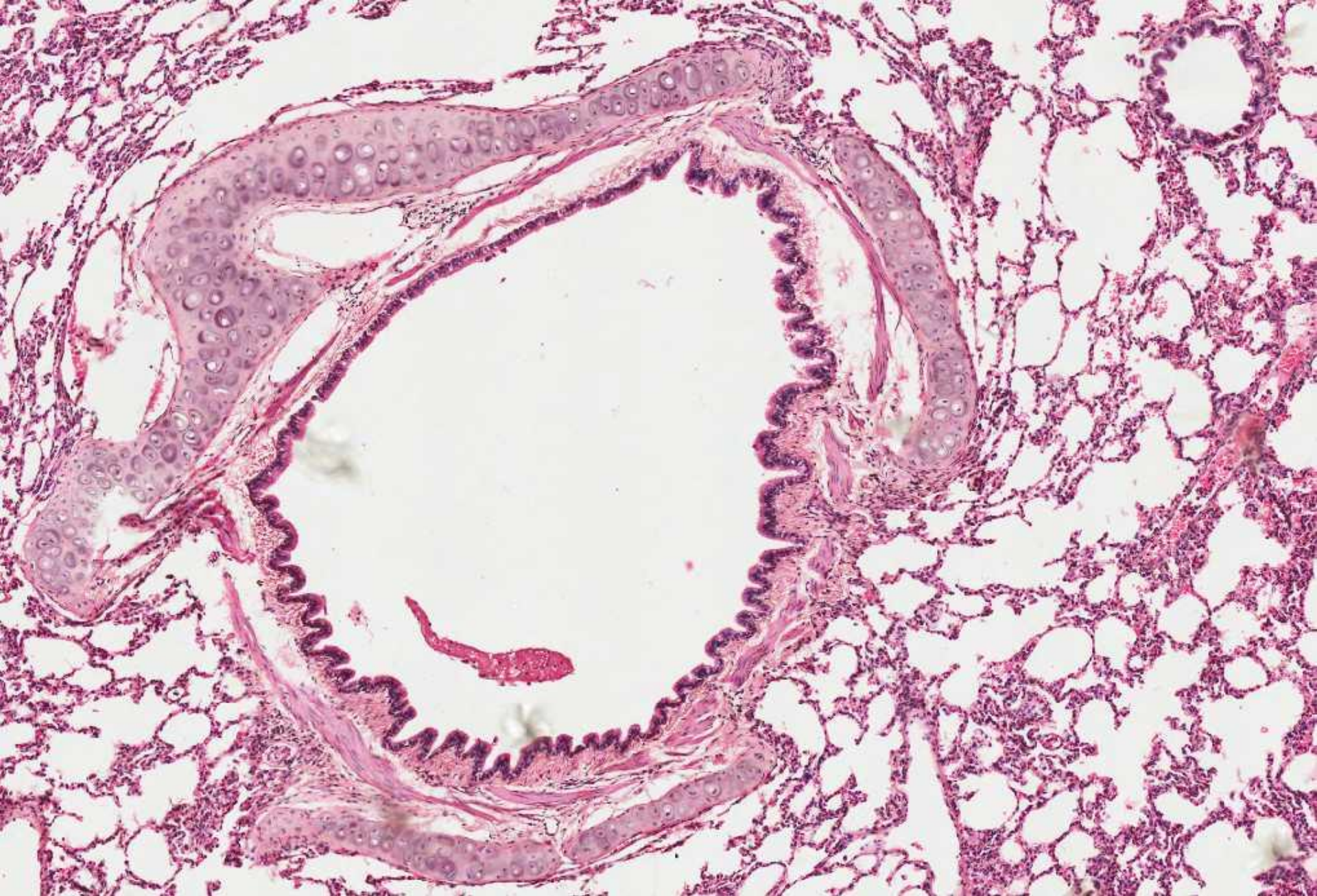
TRACHEA



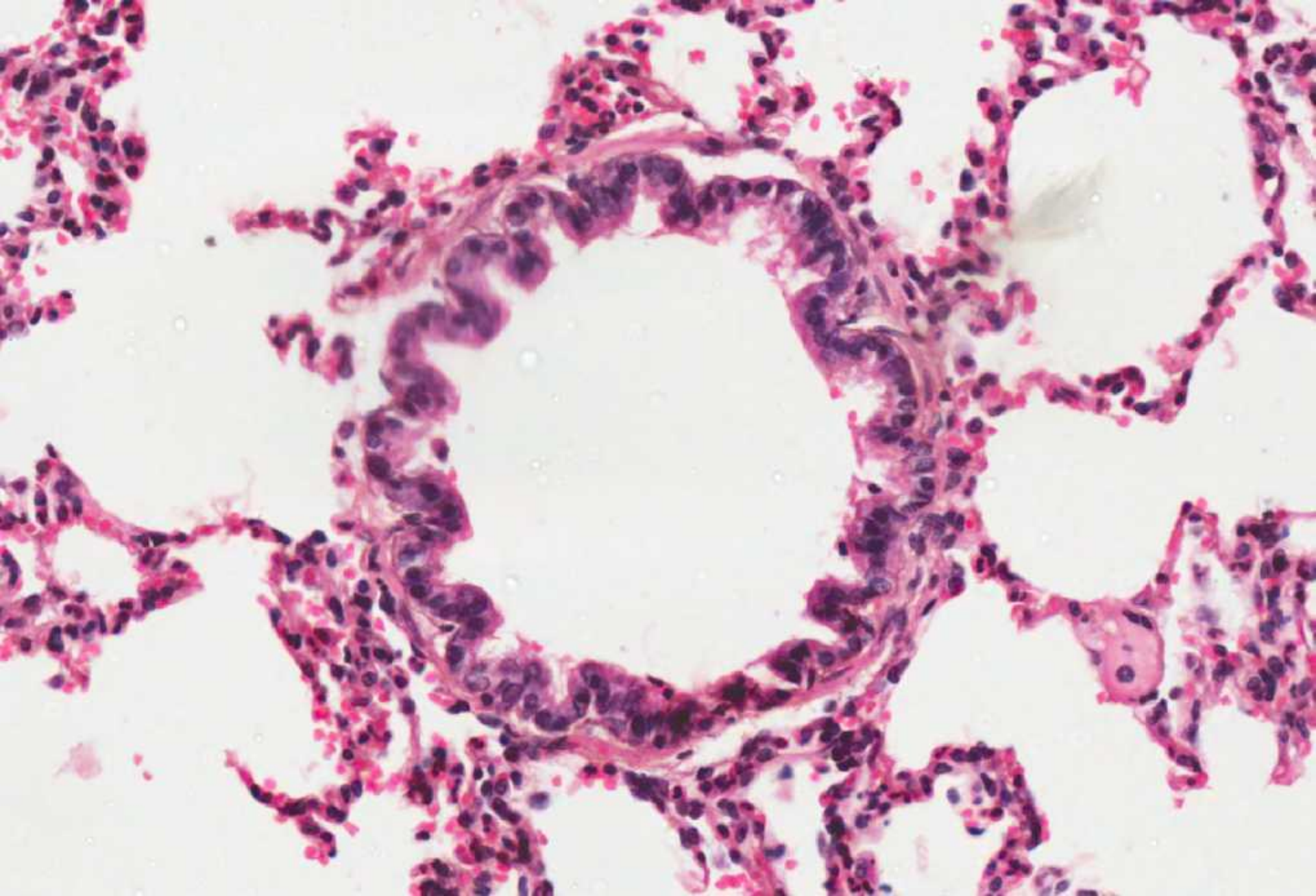
TRACHEA – mucosa (respiratory epithelium) and submucosa



LUNG

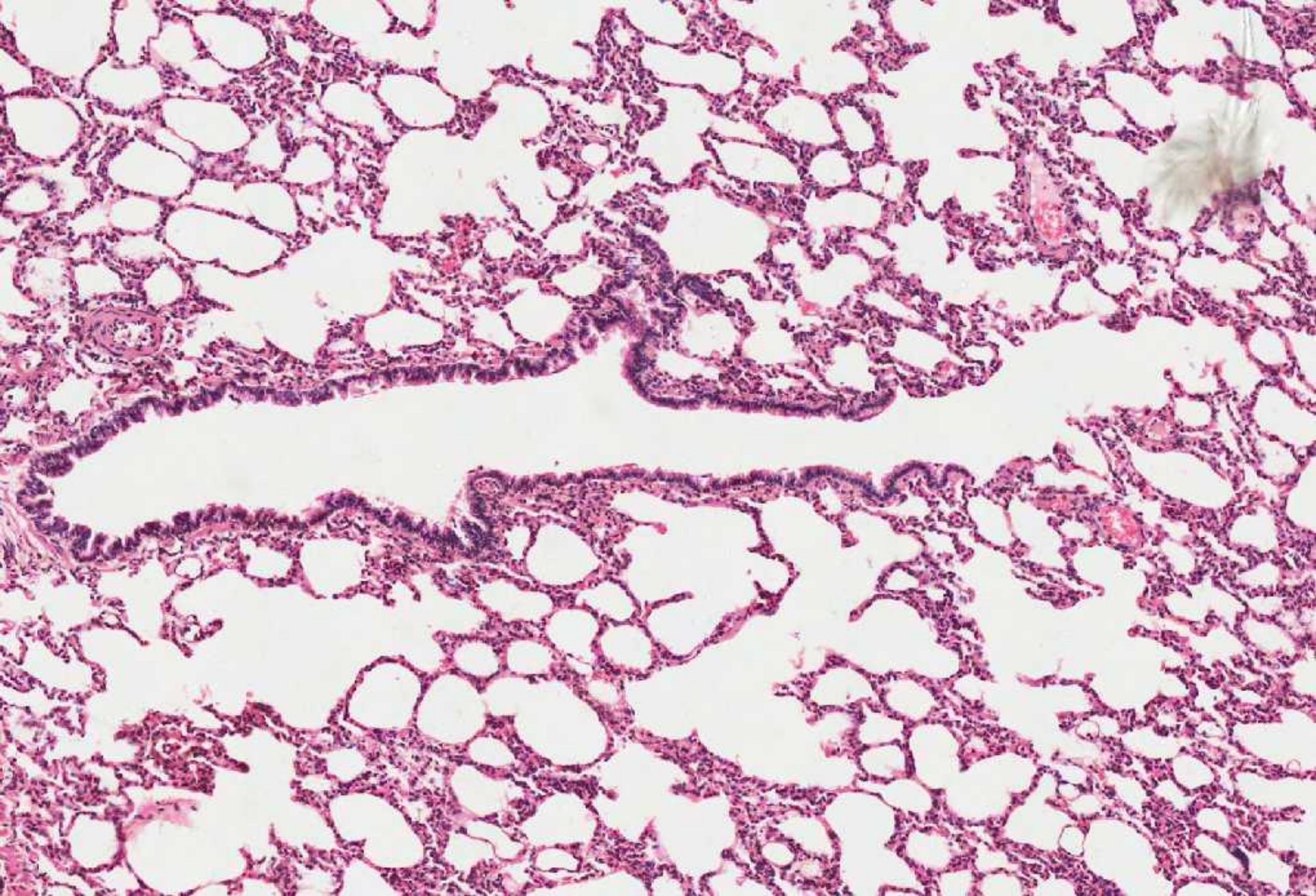


LUNG – intrapulmonary bronchus and bronchiole



LUNG – Bronchiole (TS)





LUNG – Bronchiole (LS)