

OSPE file

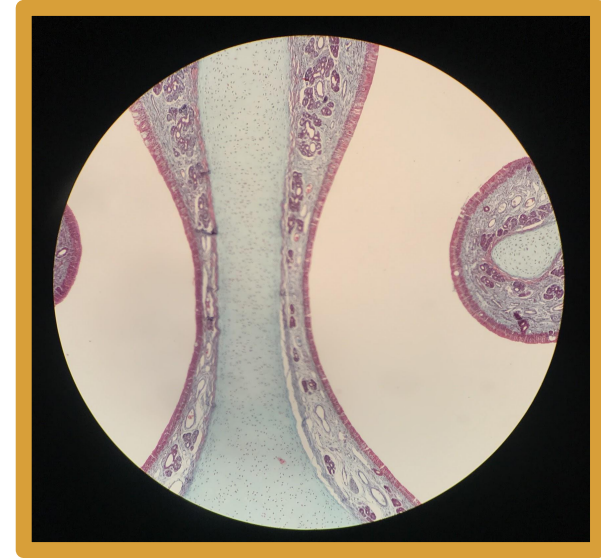
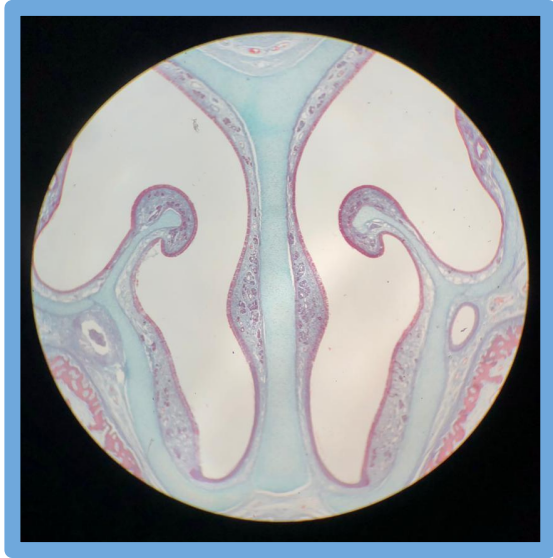
Respiratory block

Color code: Males microscopes Females microscopes doctor slides

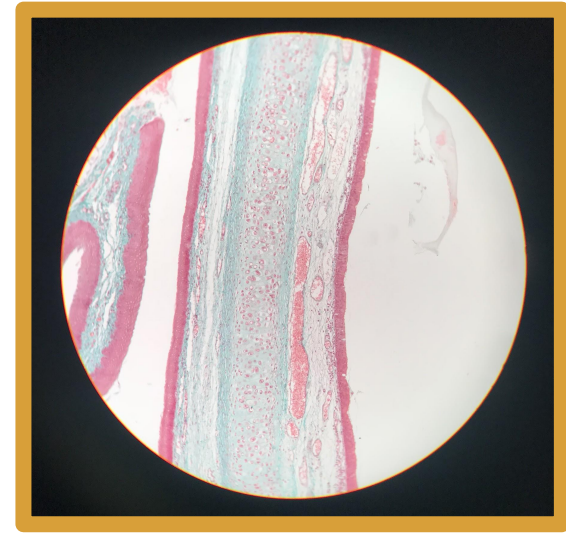
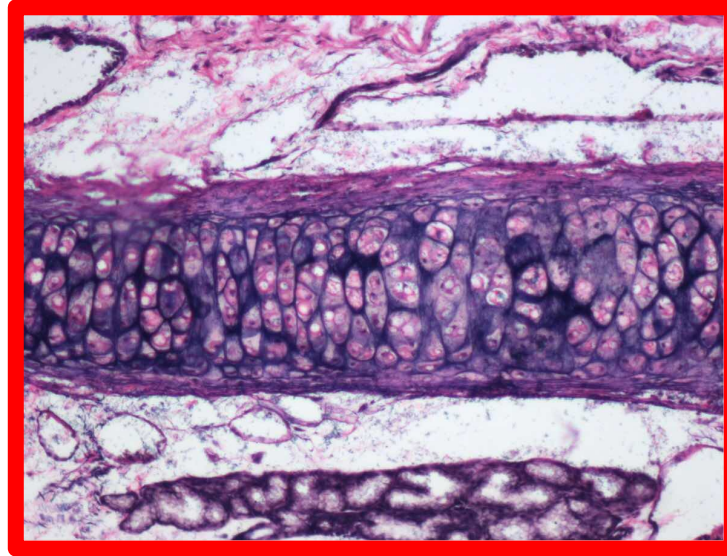
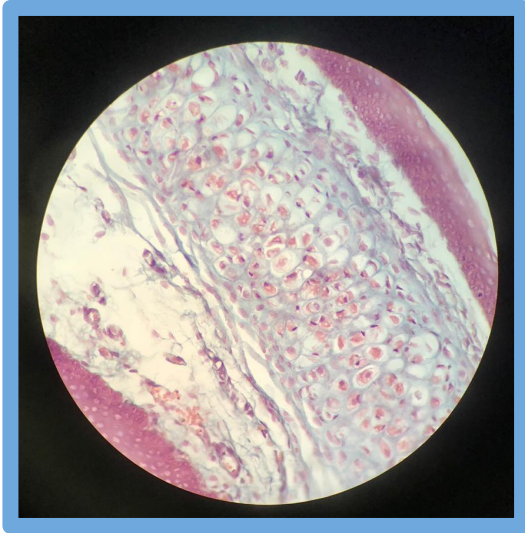
Important notes

- Only one station for histology in this block
- There will be two microscopes in the station
- The questions will be **ONLY identifying the section.** (No questions about features)
- Make sure you write the full name with correct spelling for each section.

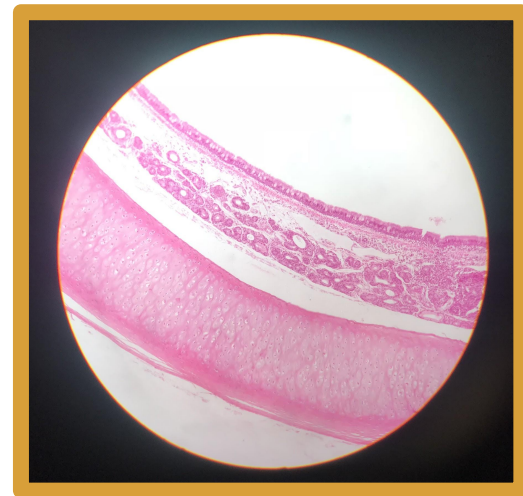
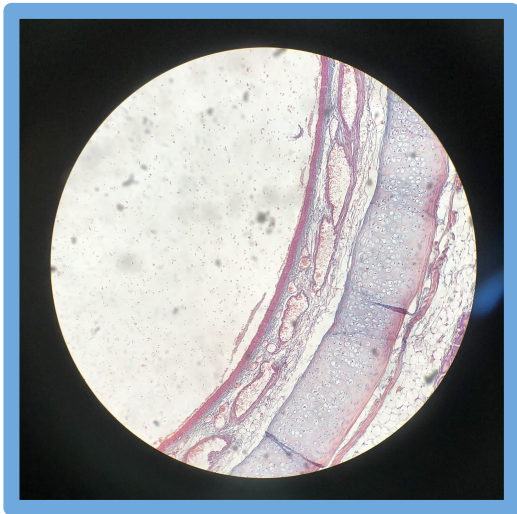
Nasal cavity and septum



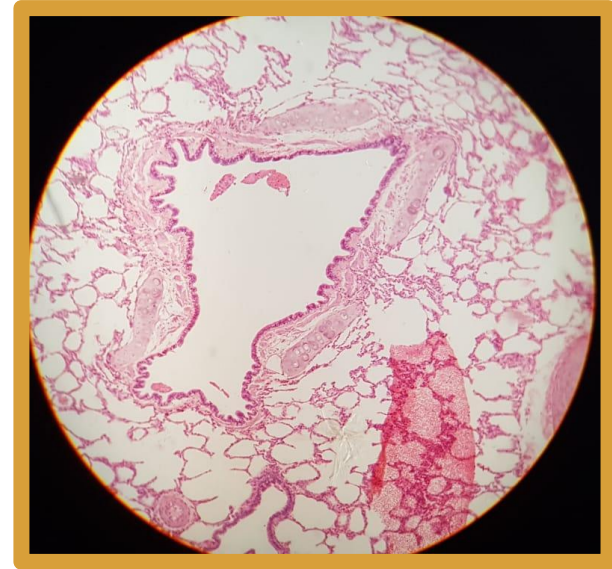
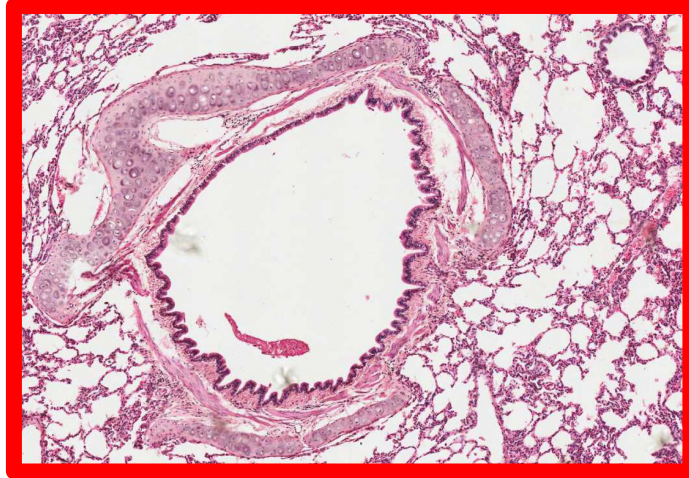
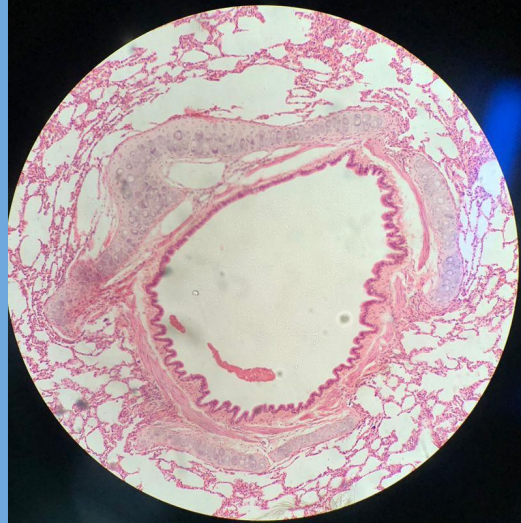
Epiglottis



Trachea

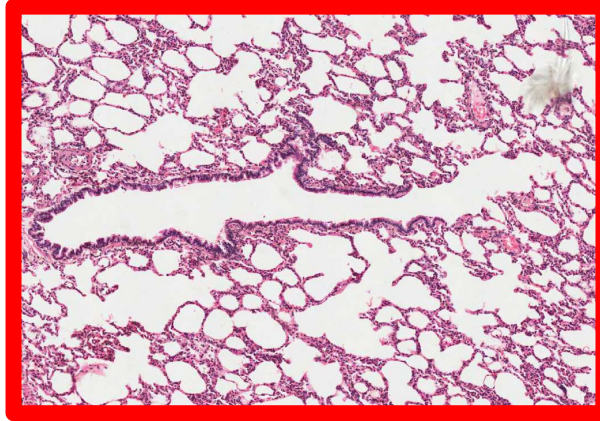


Lung-Intrapulmonary bronchus

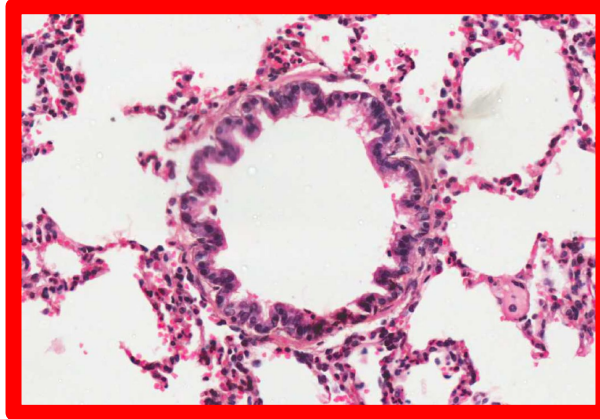
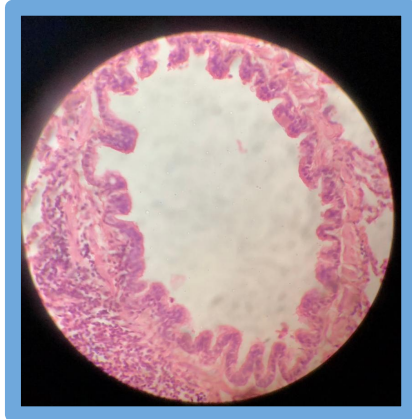


Lung-Bronchiole

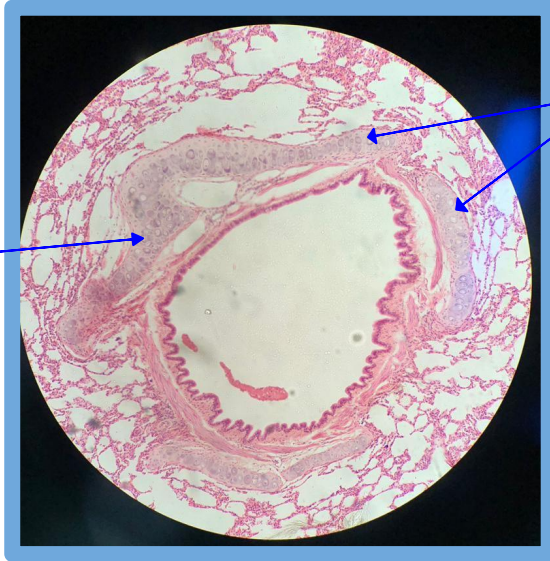
L.S



T.S



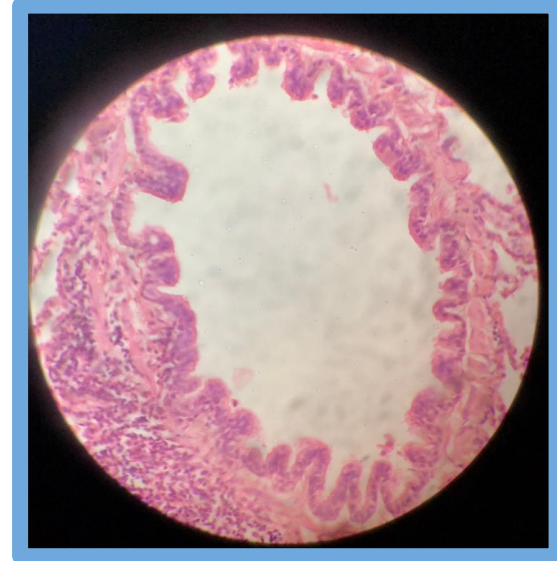
It is important to differentiate between **Intrapulmonary bronchus** and **bronchiole**



Cartilage

Cartilage

Intrapulmonary bronchus



No Cartilage

bronchiole

Test yourself

[Click here for Females' Quiz](#)

[Click here for Males' Quiz](#)

Team Members

Alhanouf Alhaloli
Roaa Aljohani
Renad Alkanaaan
Rawan Alzayed
Faisal alqifari

Team Leaders

Sarah AlFlaij
Abdullah shadid

Please send your suggestions & questions:

 Histology438@gmail.com