




# **RADIOLOGICAL ANATOMY OF THE VERTEBRAE**

Practical (1)  
Radiology

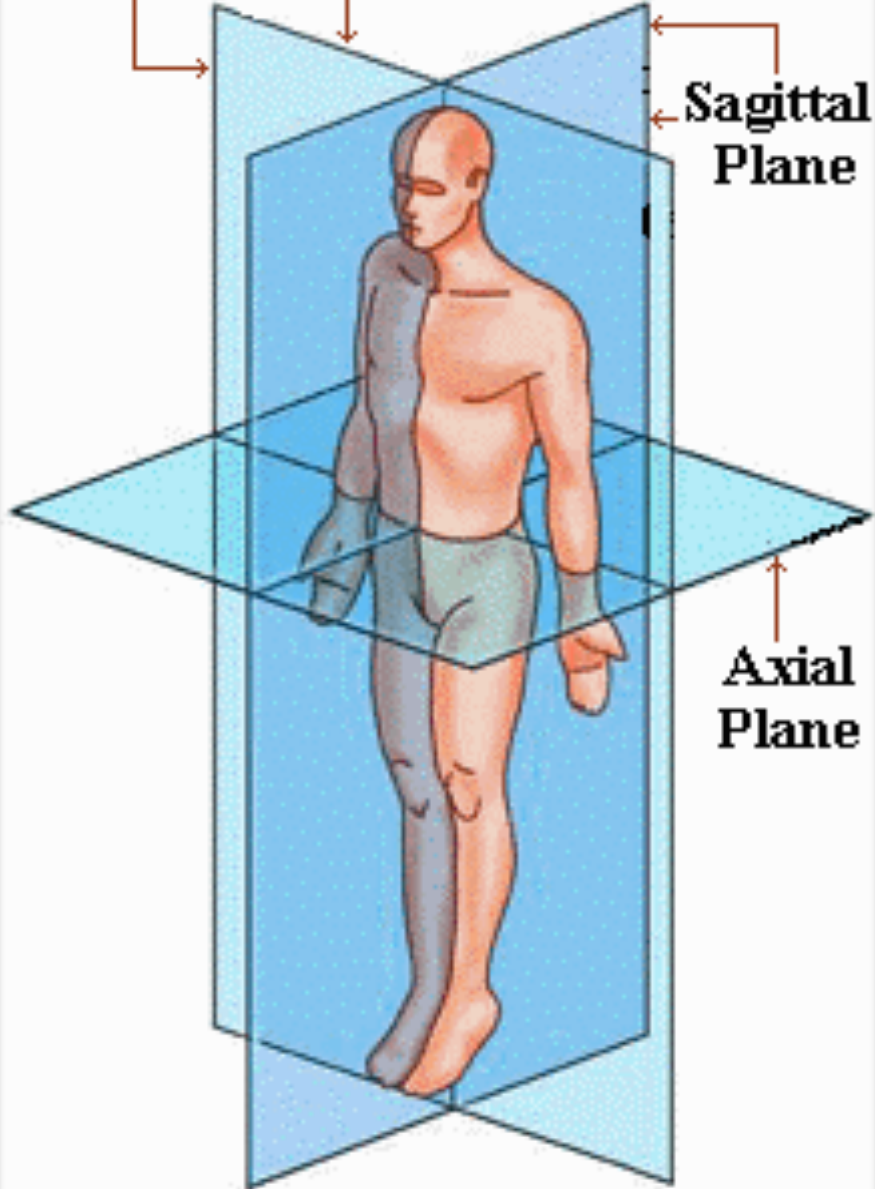


**Which of following radiological modalities can be used in imaging the vertebra?**

- A. X ray
- B. CT scan
- C. Nuclear scan
- D. MRI
- E. US

**ALL** can be used

**Coronal Plane**

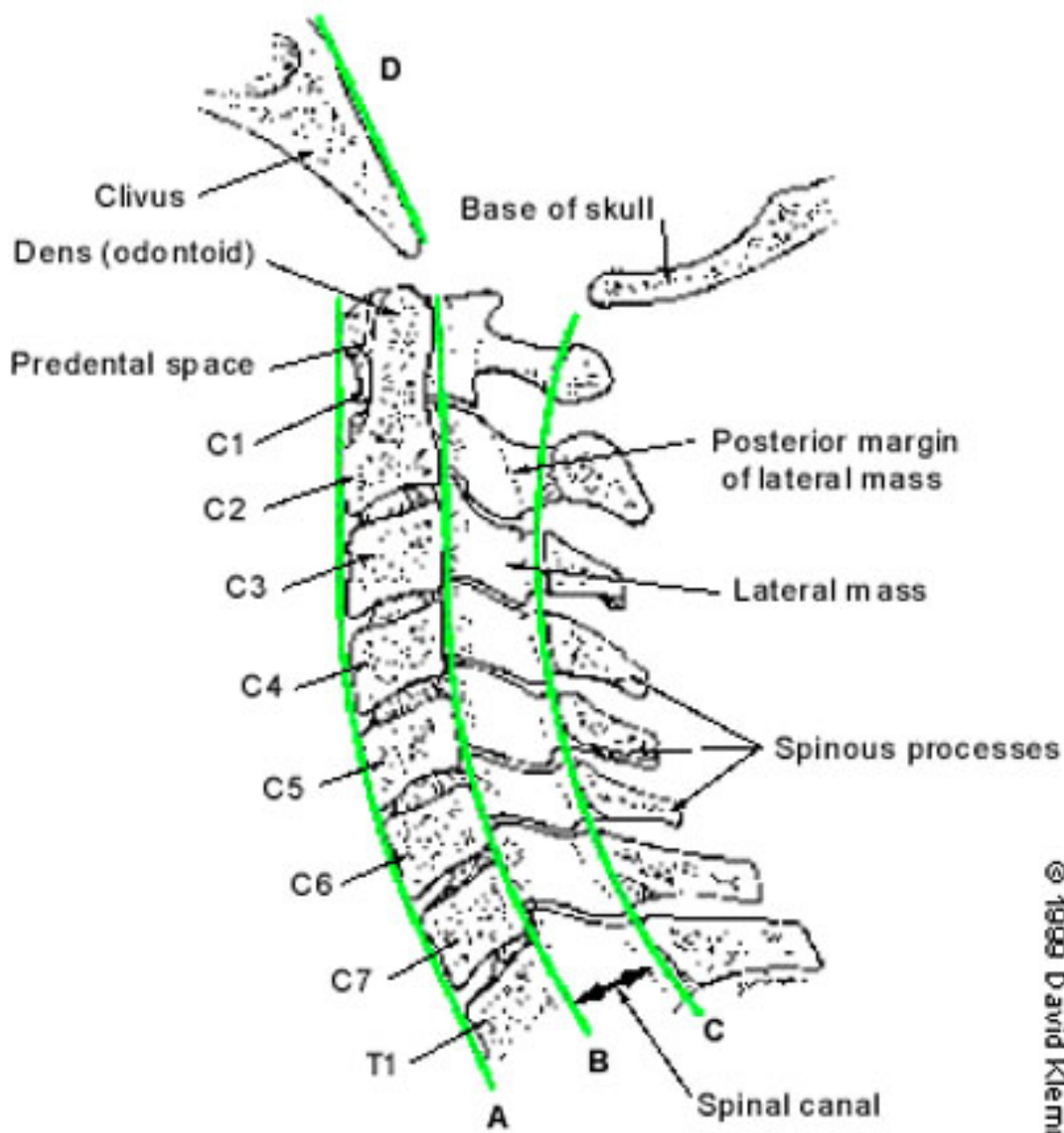


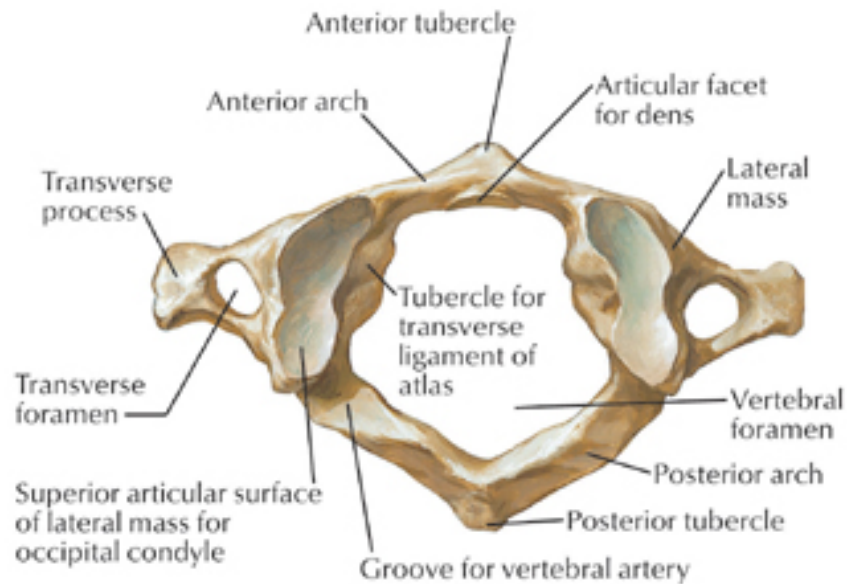
**Sagittal Plane**

**Axial Plane**

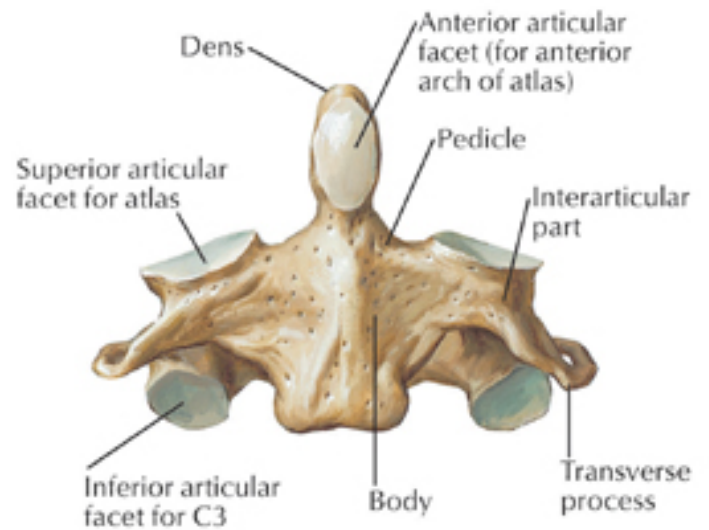
**X-ray**

# Cervical spine

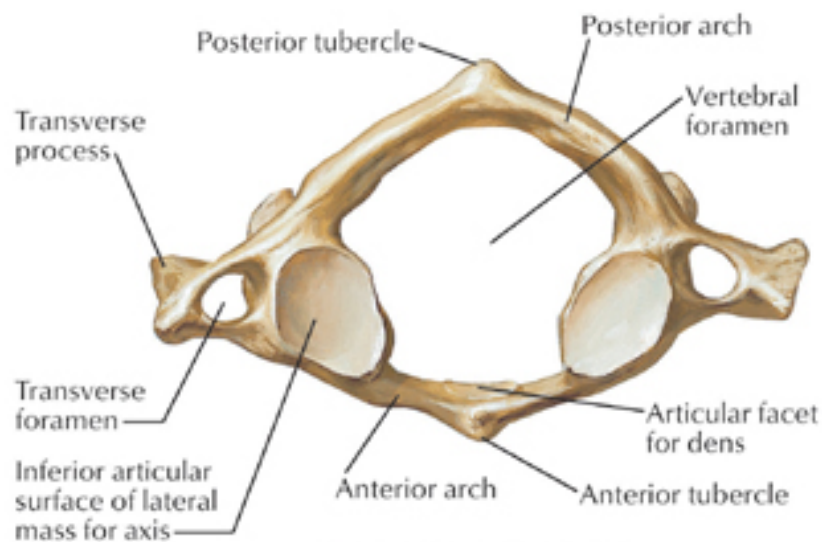




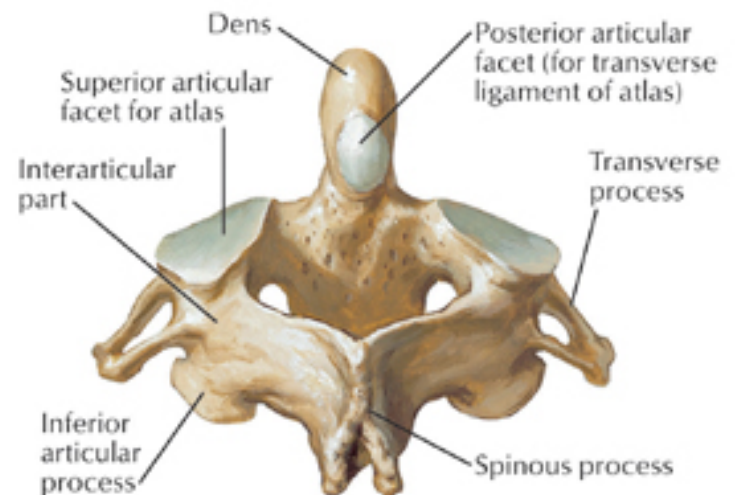
**Atlas (C1): superior view**



**Axis (C2): anterior view**

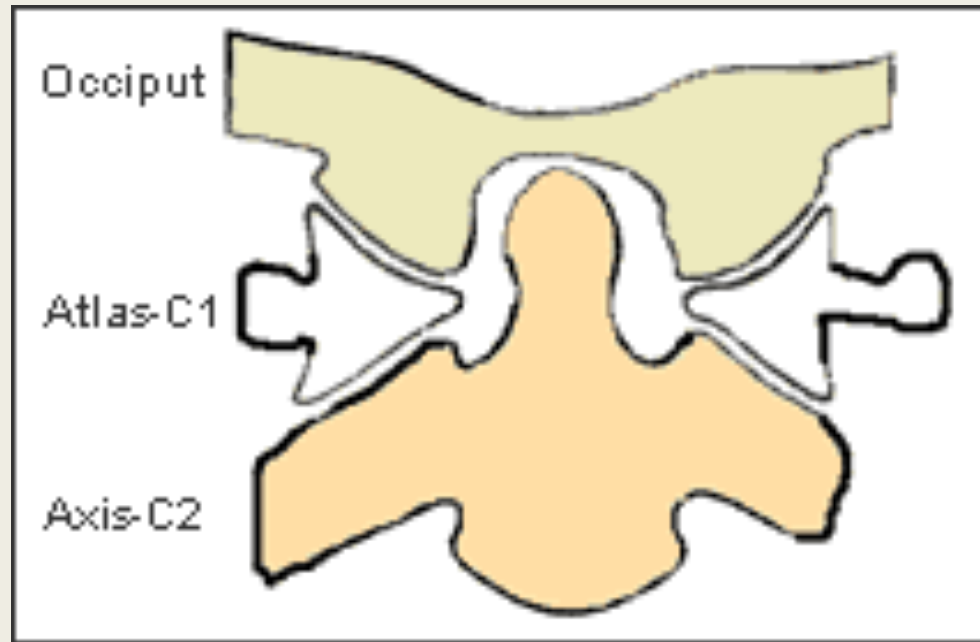


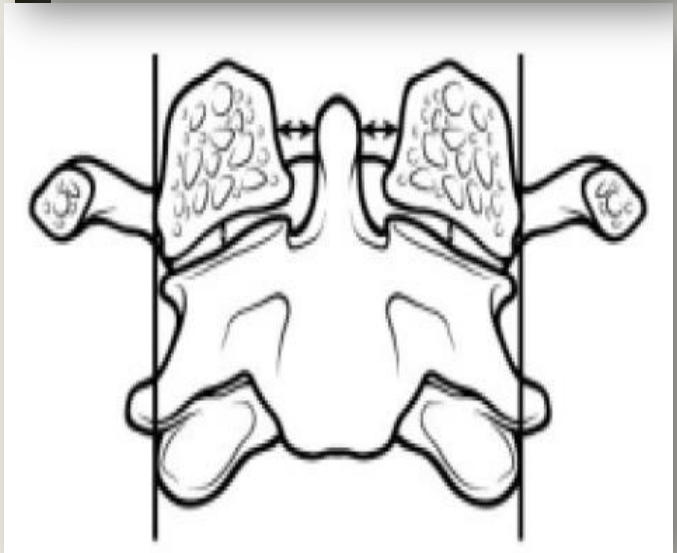
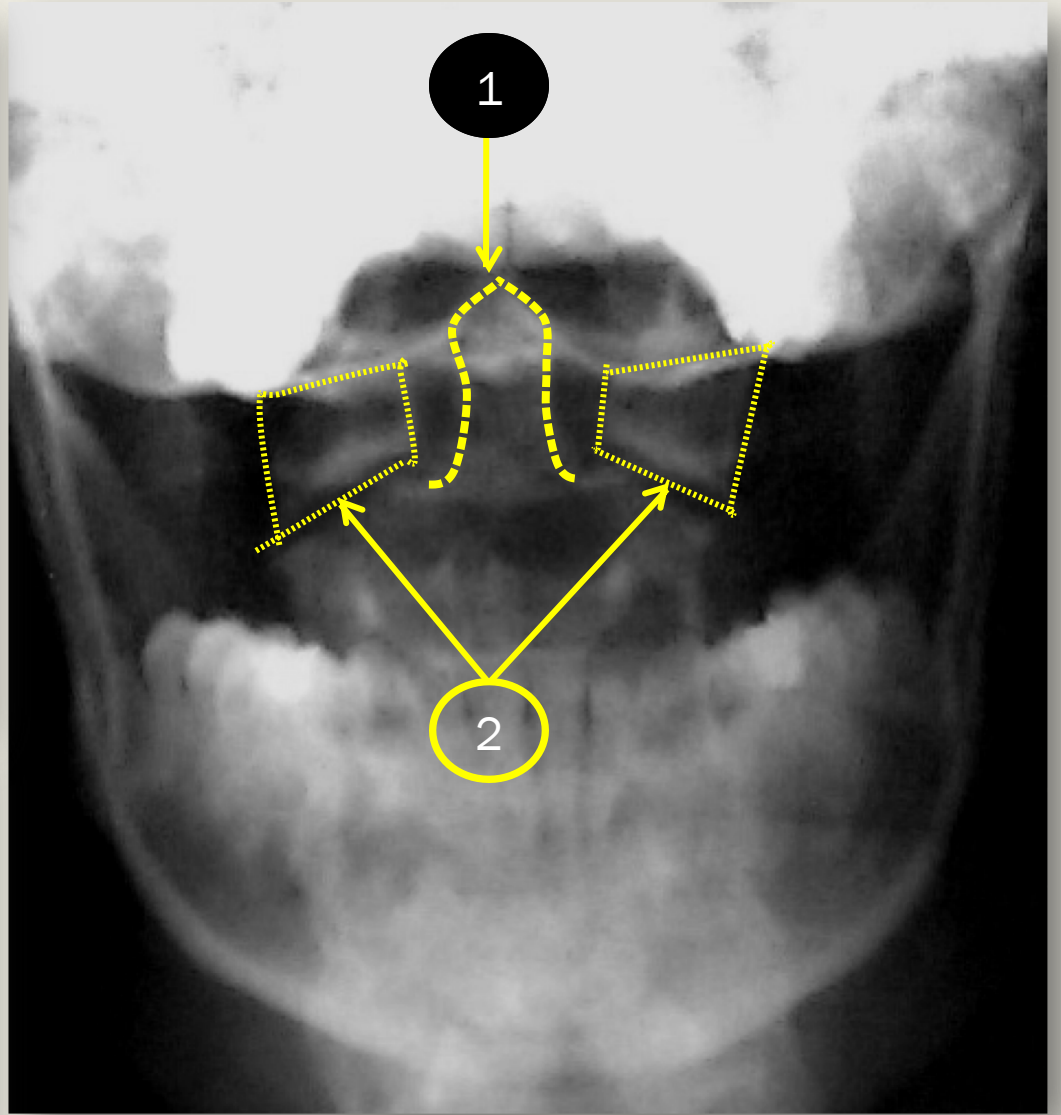
**Atlas (C1): inferior view**

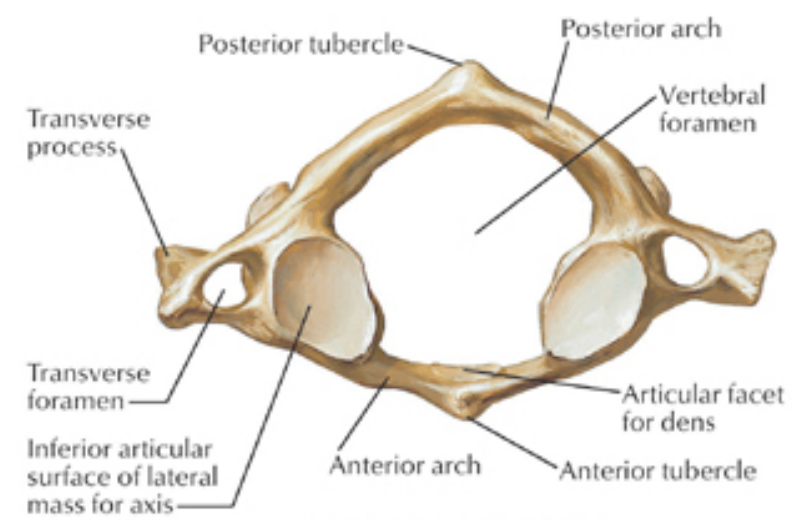
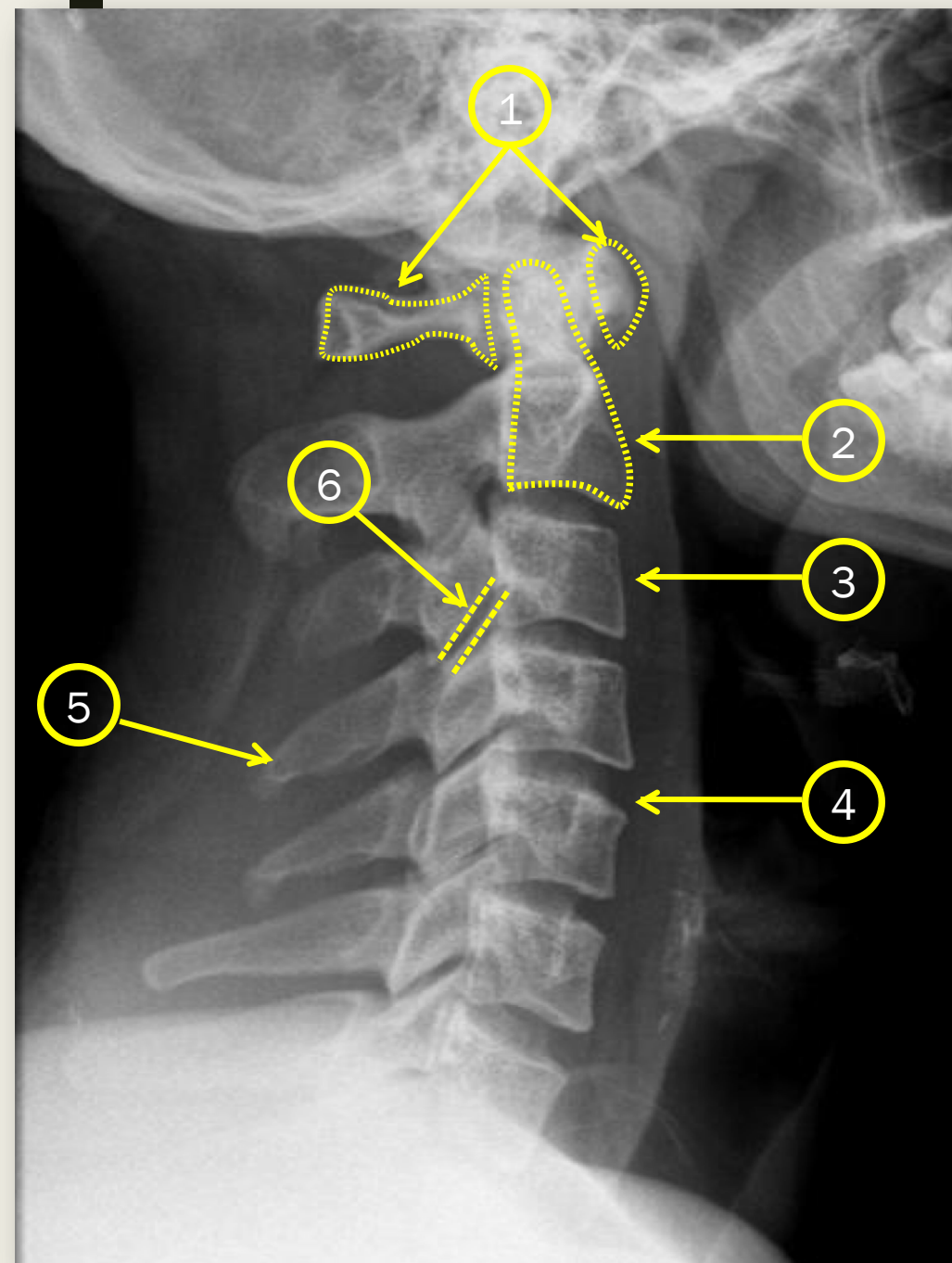


**Axis (C2): posterosuperior view**

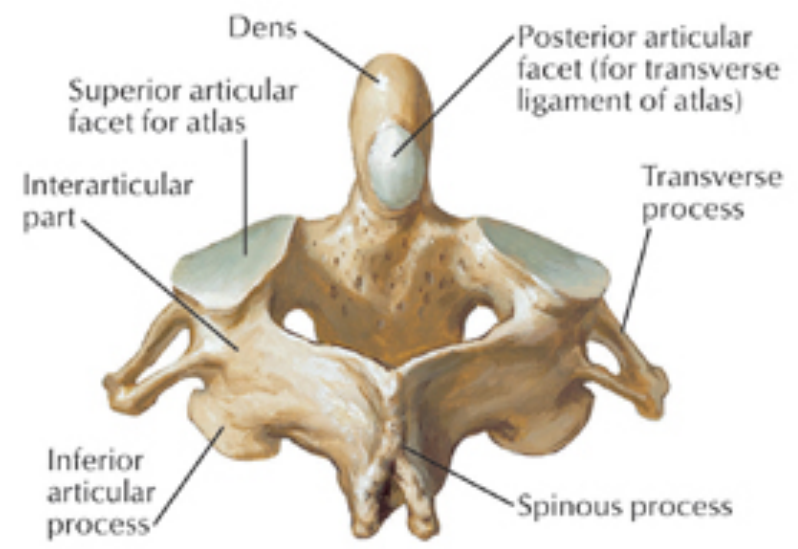




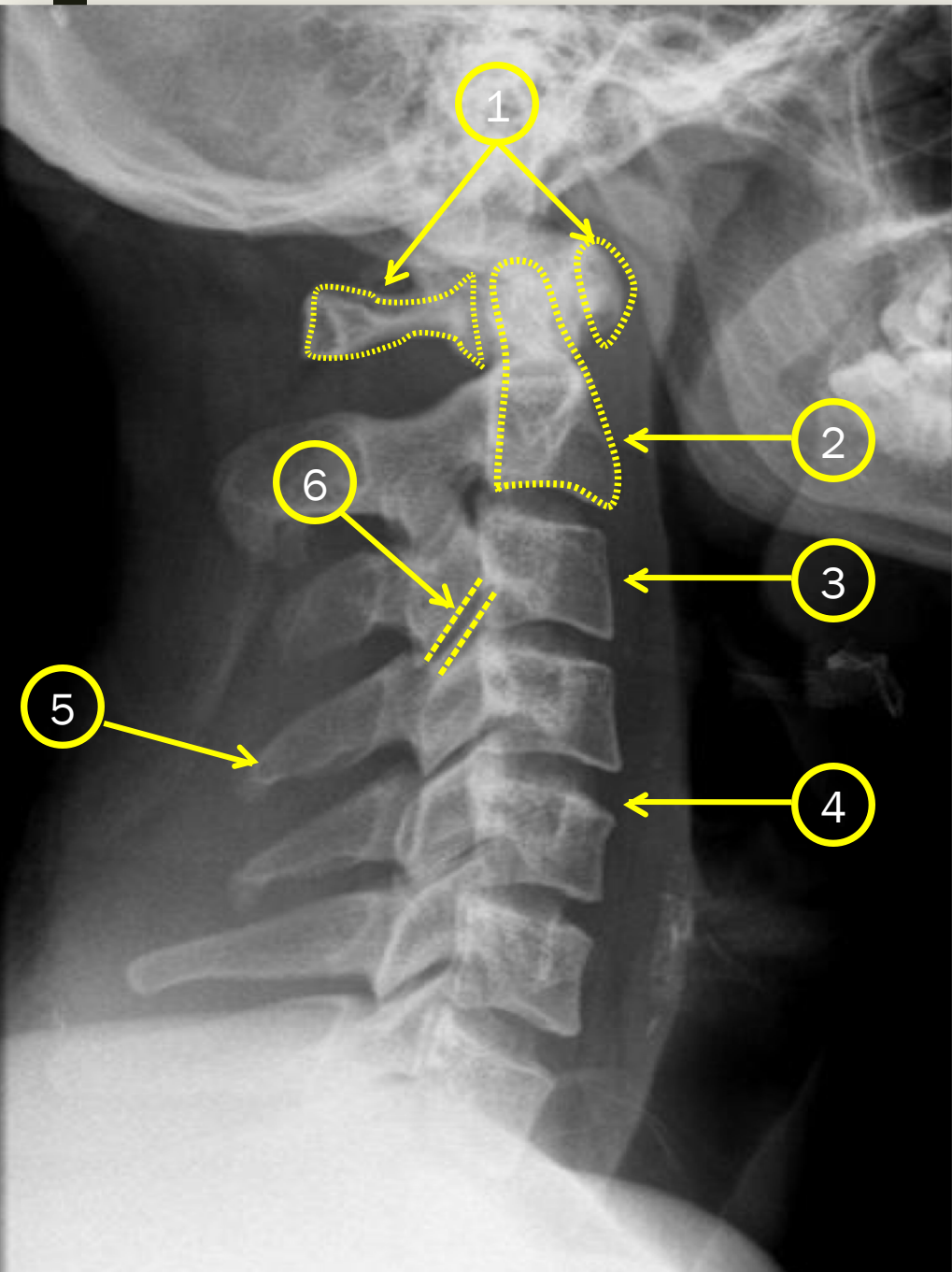




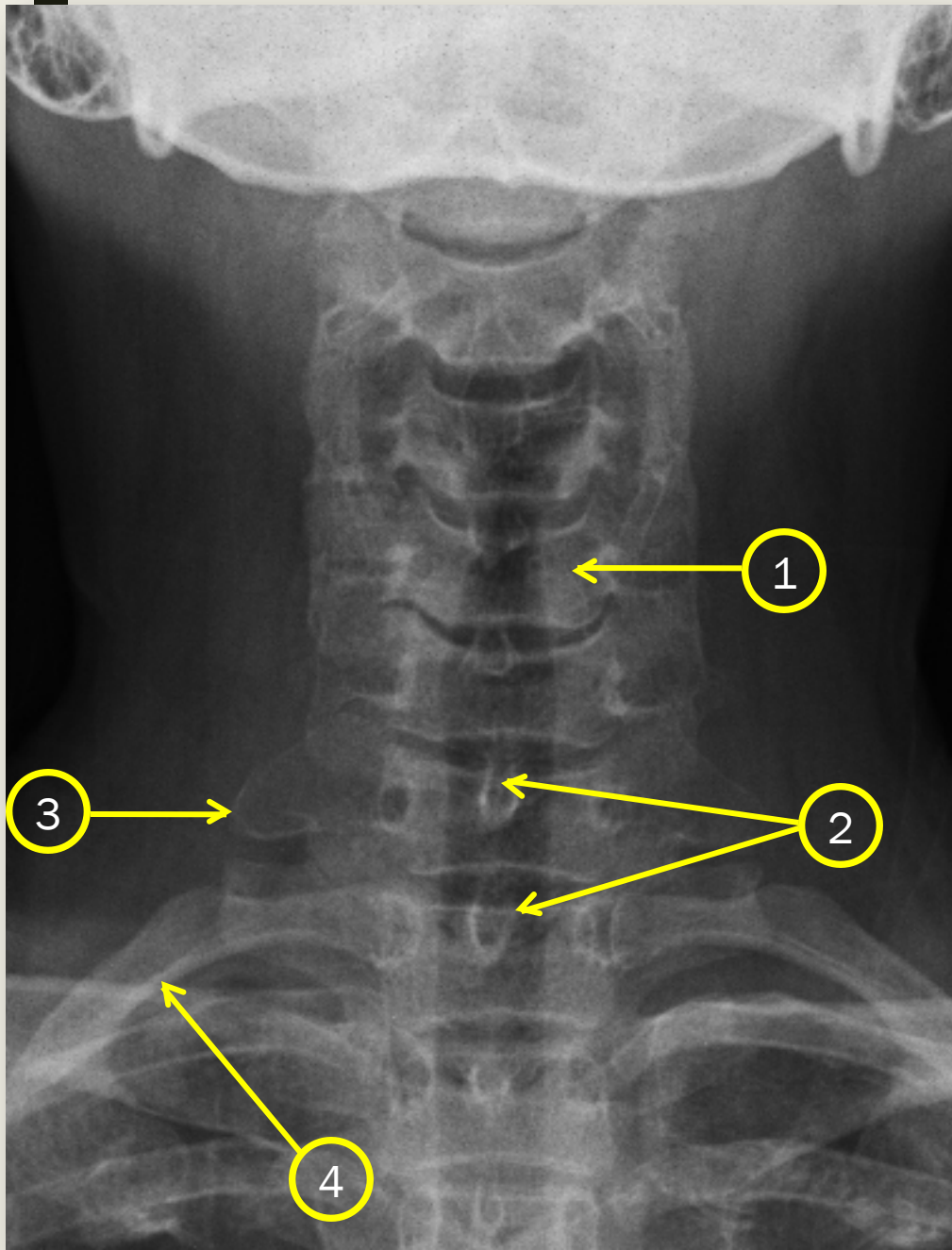
**Atlas (C1): inferior view**

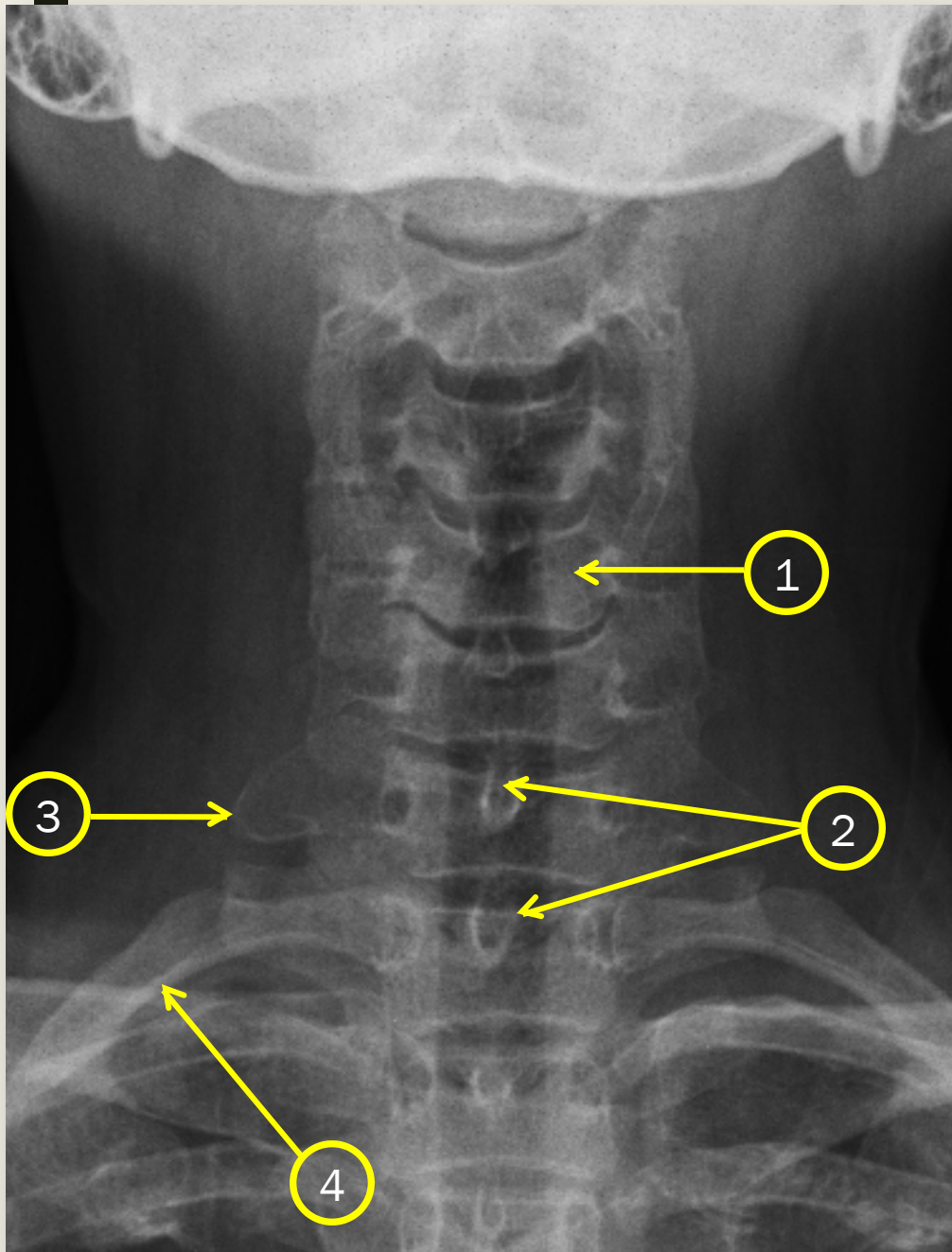


**Axis (C2): posterosuperior view**



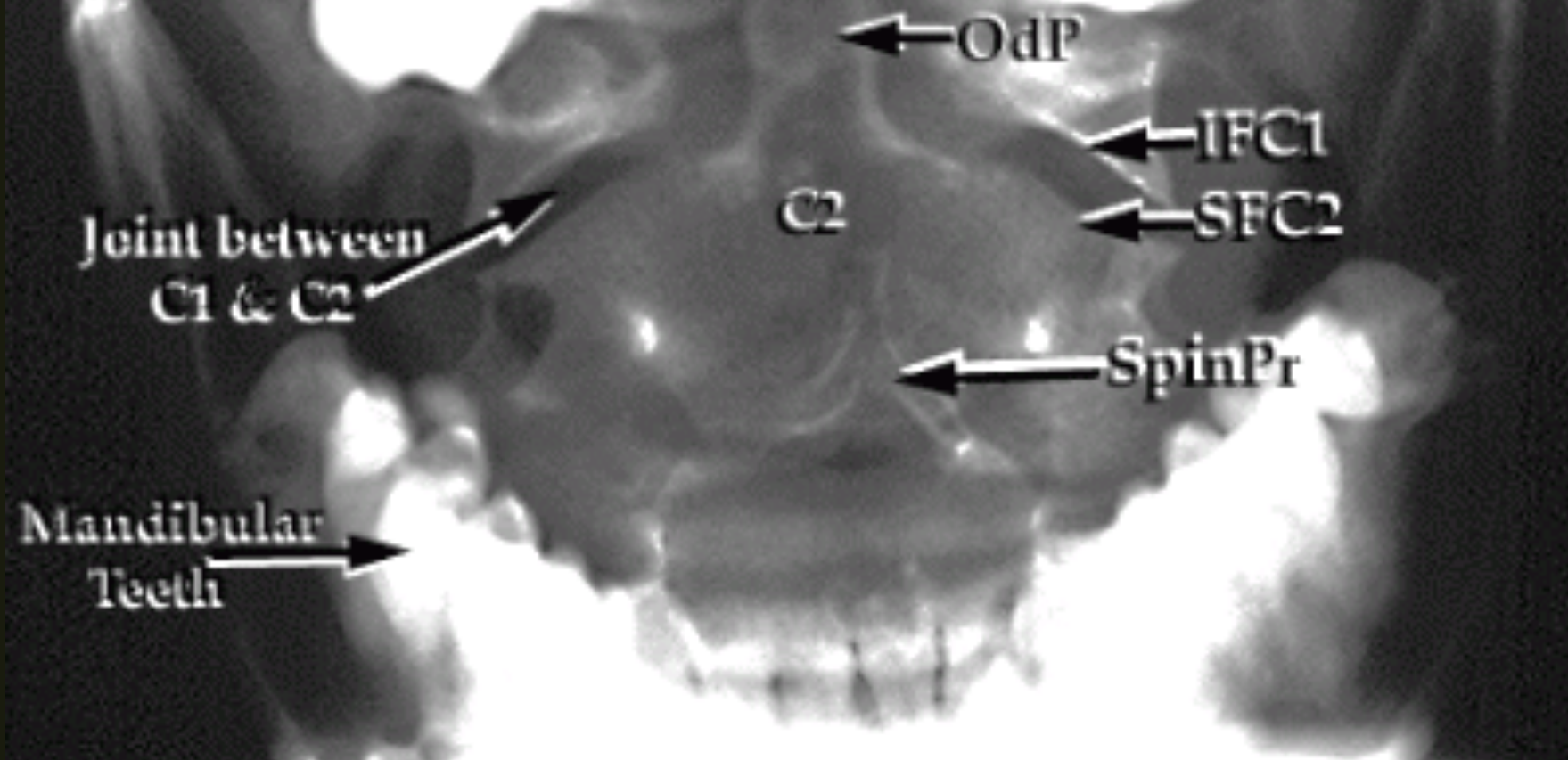
- 1. C1
- 2. C2
- 3. C3
- 4. Intervertebral disc
- 5. Spinous process of C4
- 6. Facet joint





1. Vertebral body C5
2. Spinous process
3. Transverse process
4. First rib

**AP**  
**Open Mouth View**

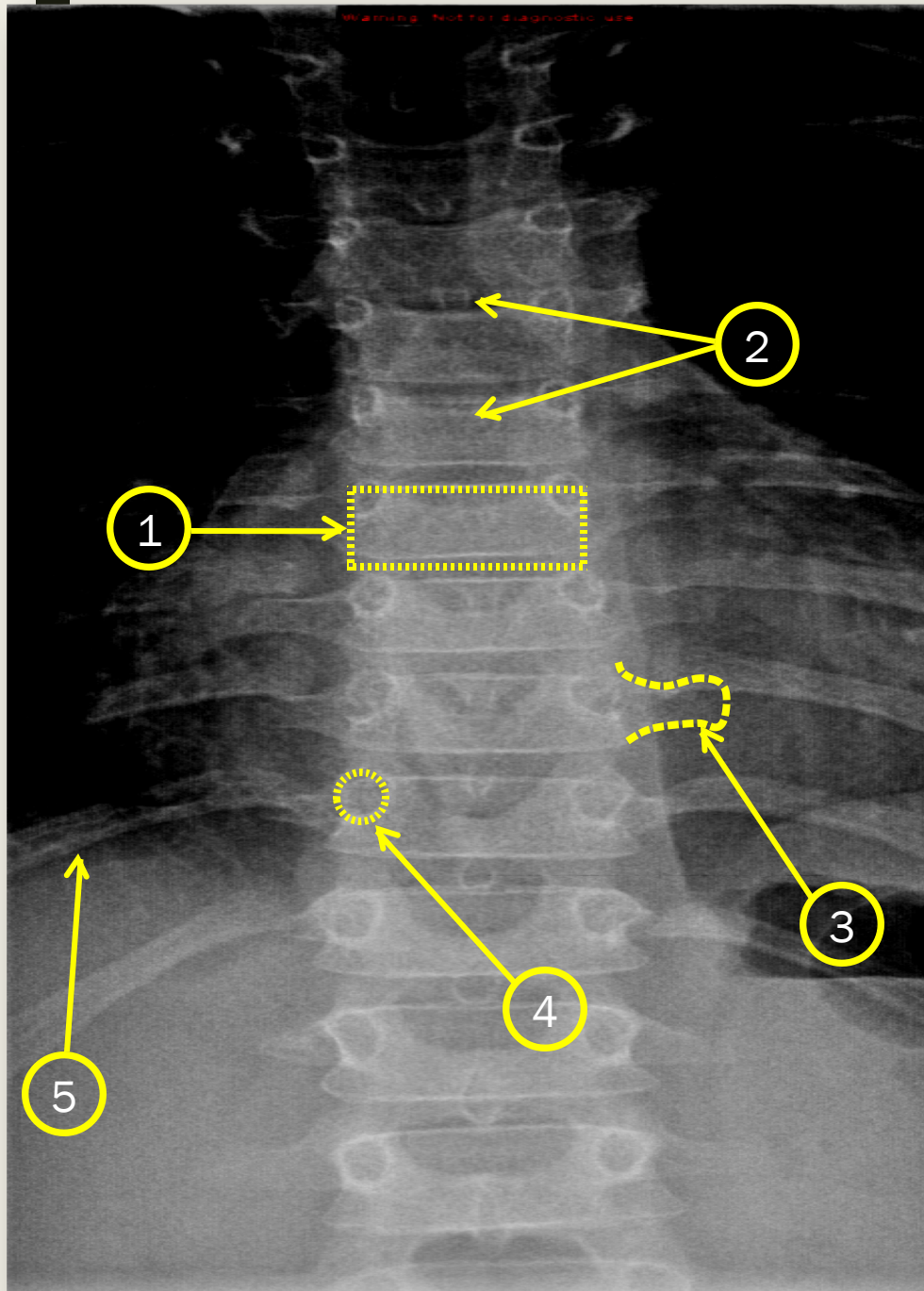


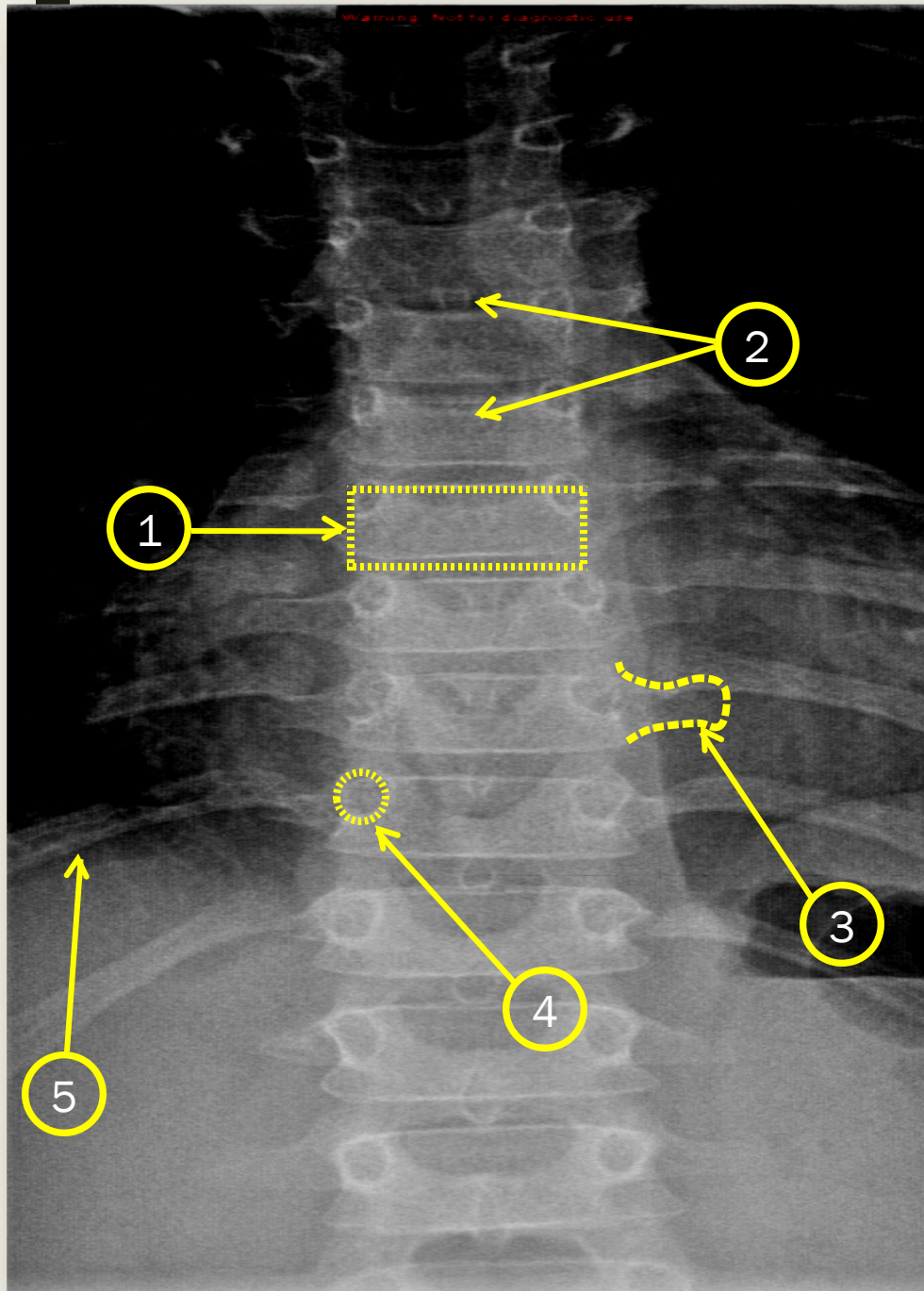
OdP=Odontoid Process (dens)  
IFC1=Inferior Facet of C1  
SFC2=Superior Facet of C2

SpinPr=Spinous Process of C2  
C2=Cervical Vertebra 2 (Axis)

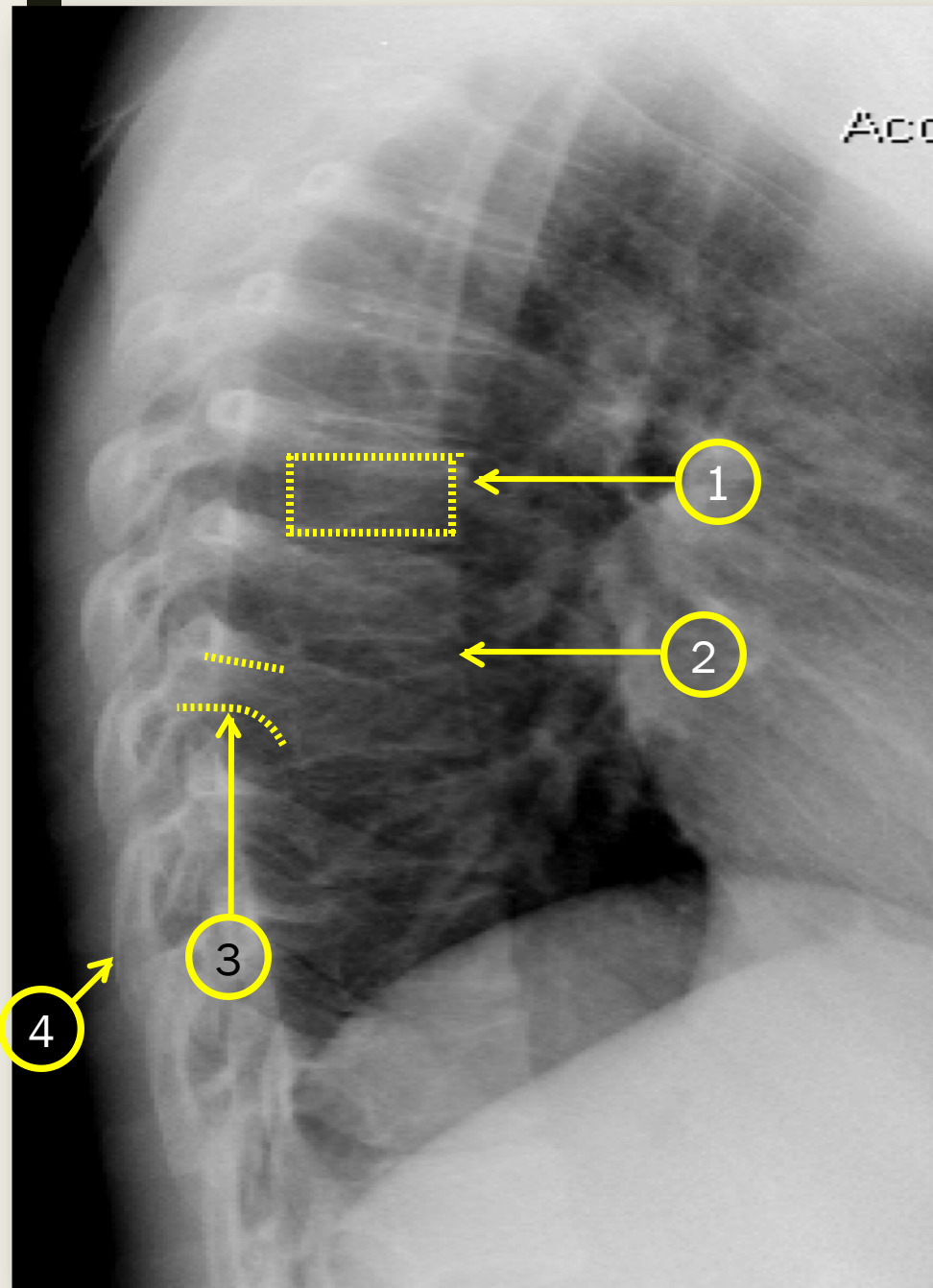
# Thoracic spine

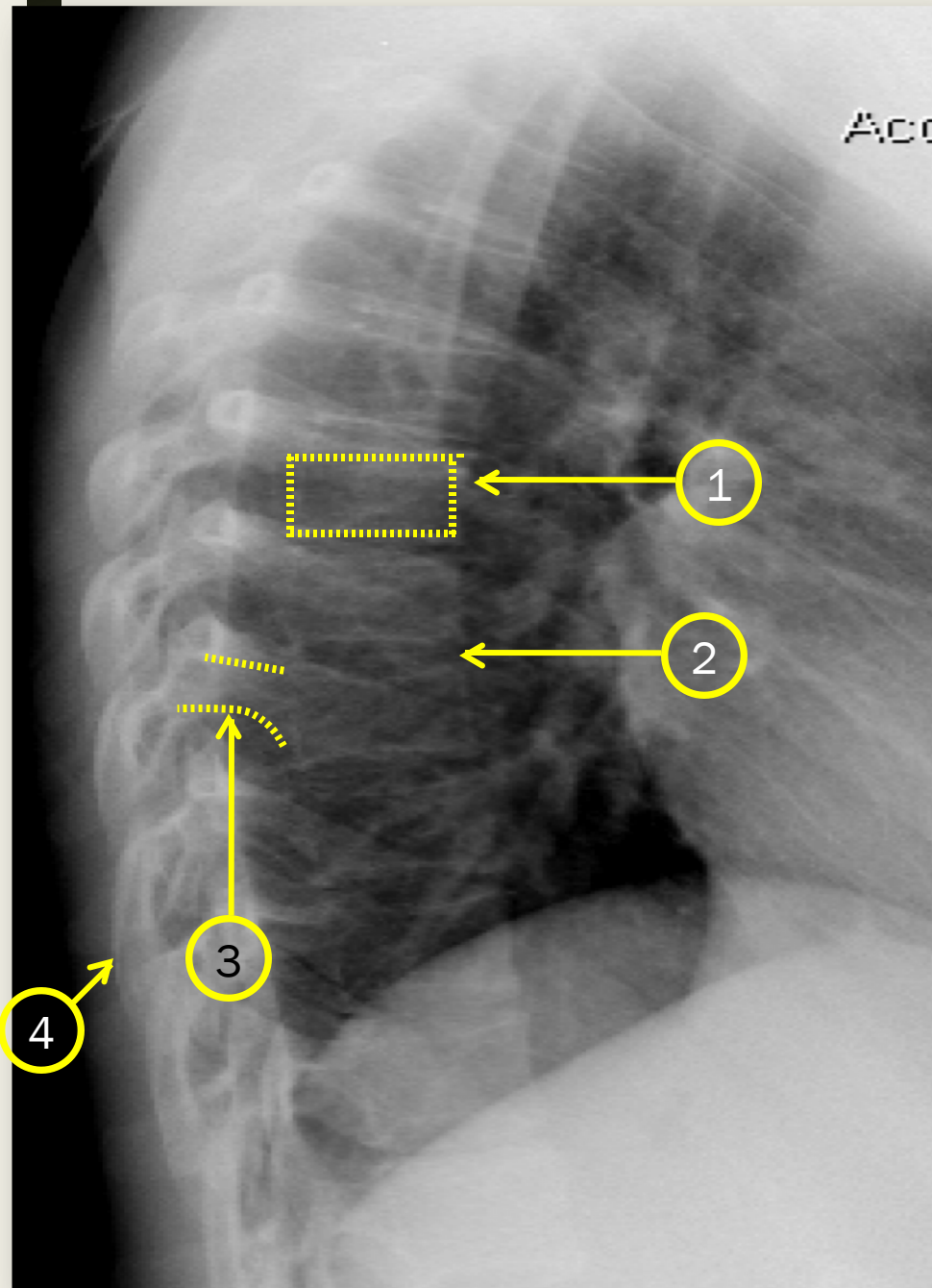






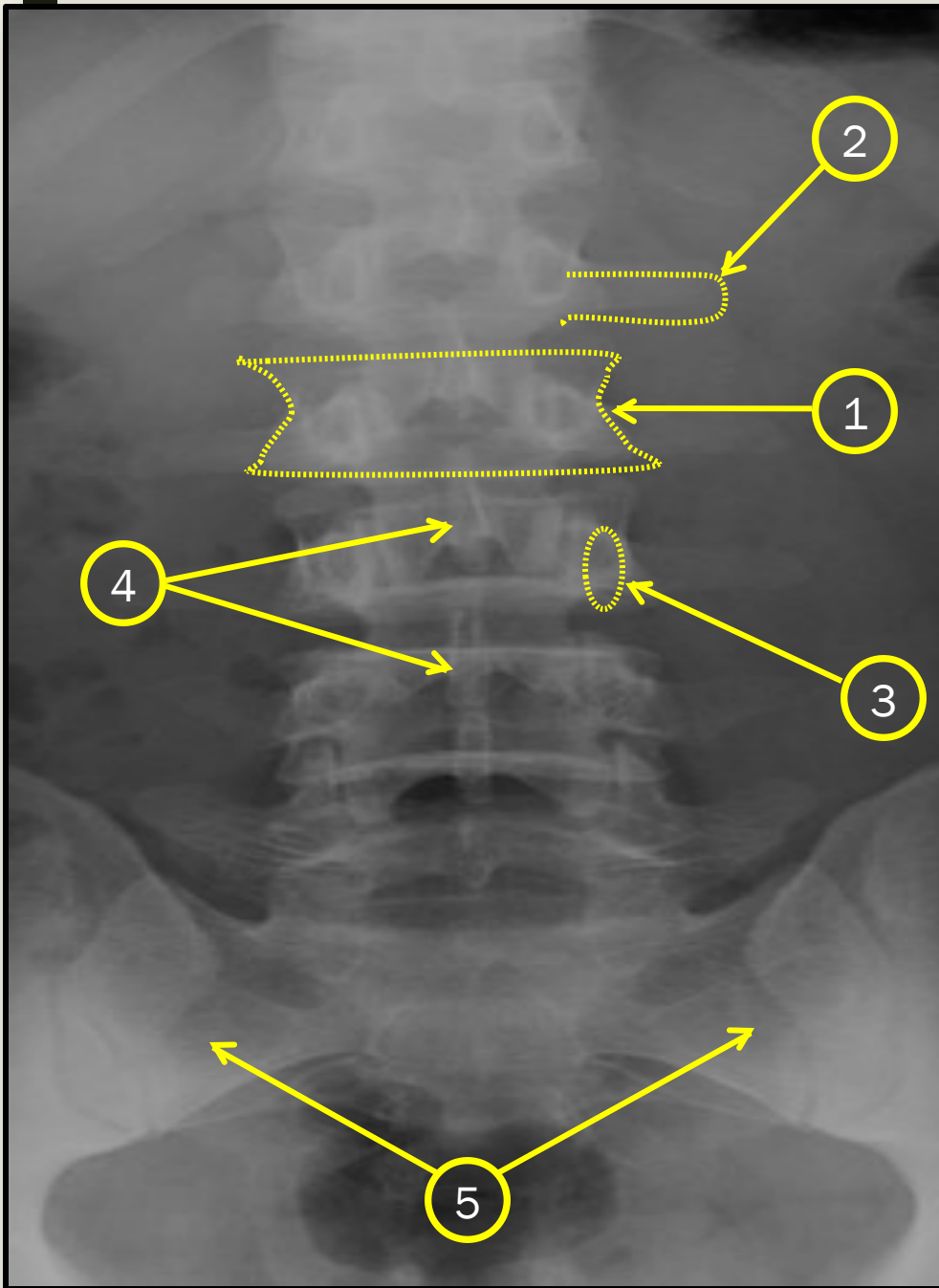
1. Vertebral body
2. Spinous process
3. Transverse process
4. Pedicle
5. Rib



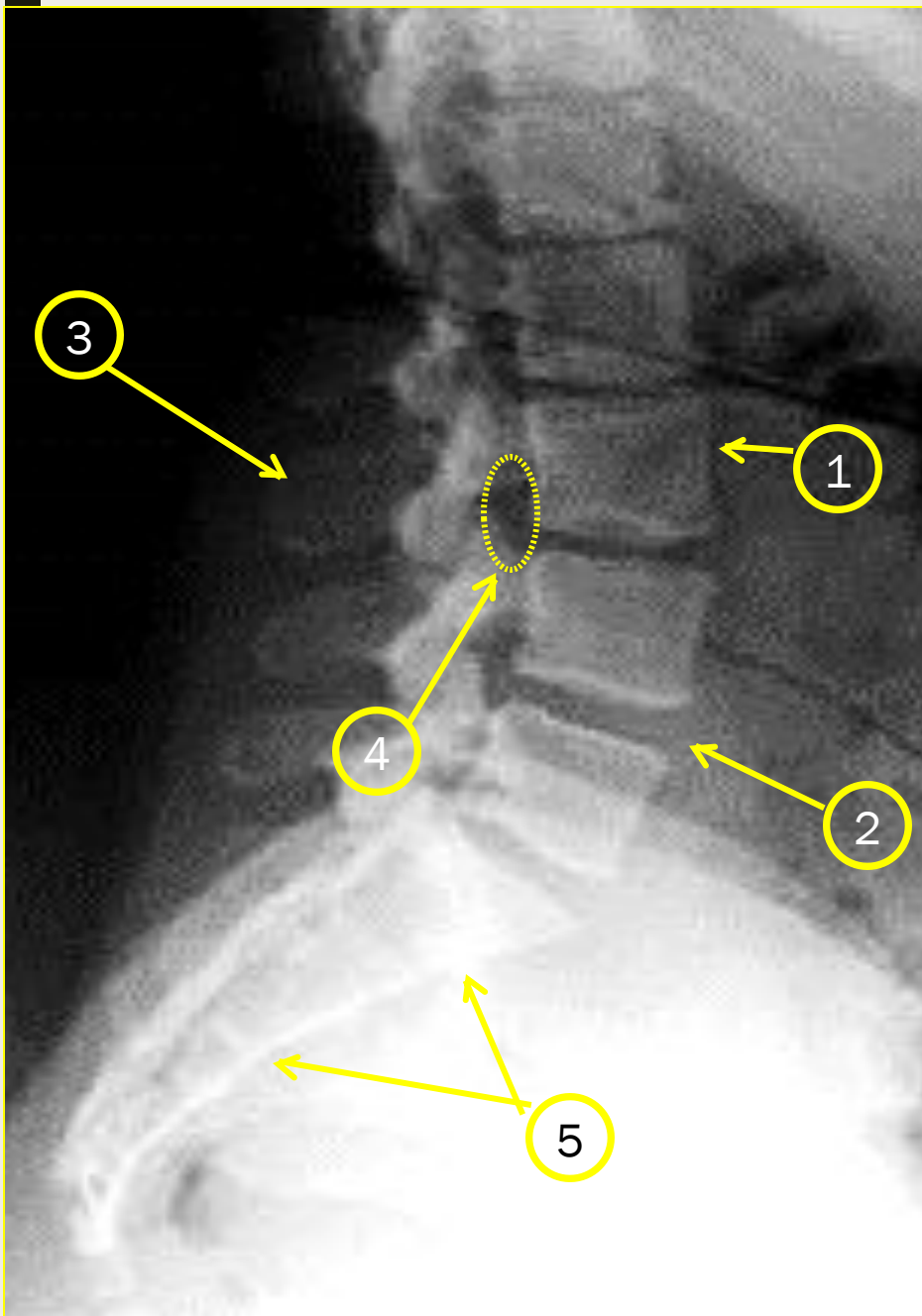


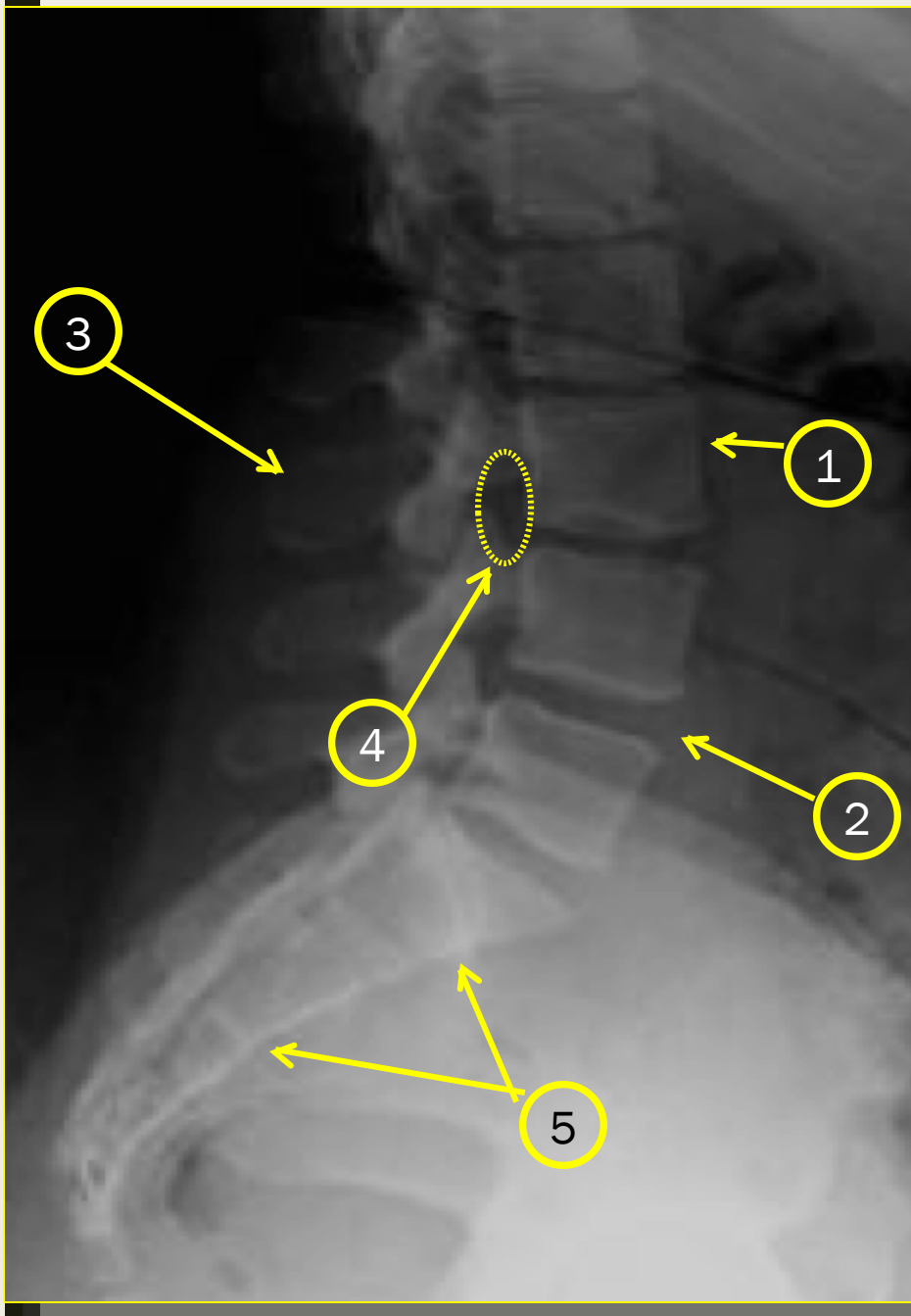
1. Vertebral body
2. Intrvertebral disc
3. Pedicle
4. Rib

# Lumbar spine



1. Vertebral body
2. Transverse process
3. Pedicle
4. Spinous process
5. Sacrum





1. Vertebral body L3
2. Intrvertebral disc
3. Spinous process
4. Neural foramen
5. Sacrum



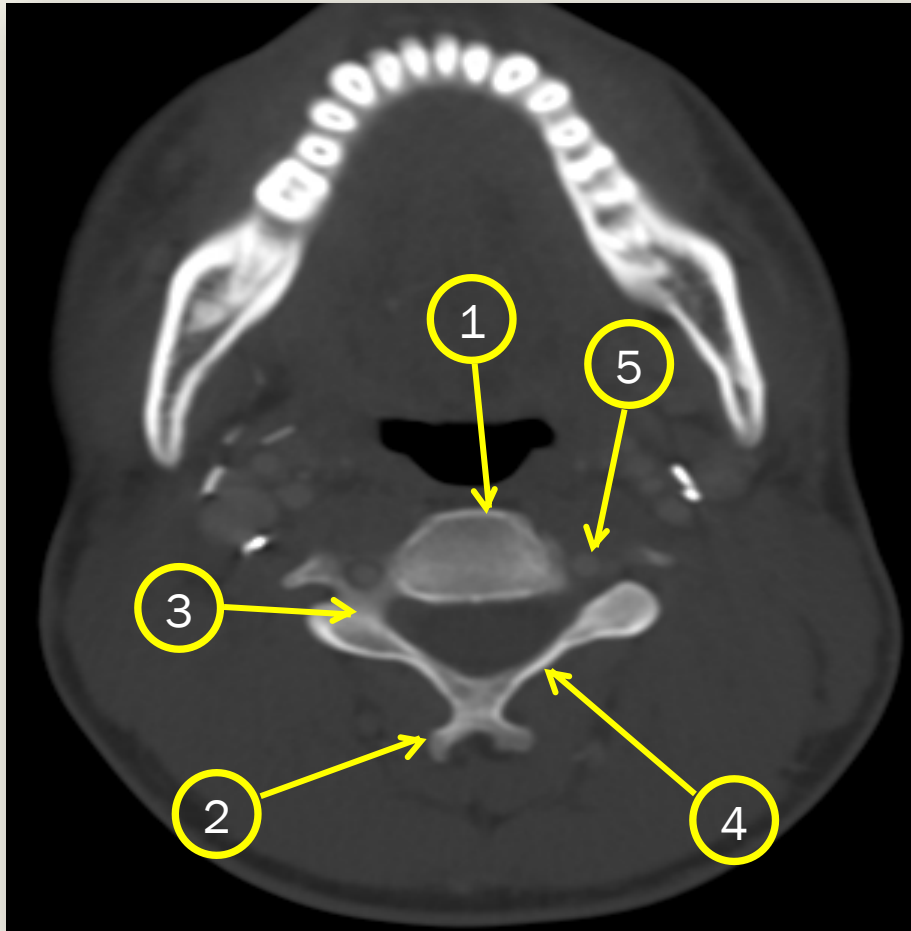




**CT scan**

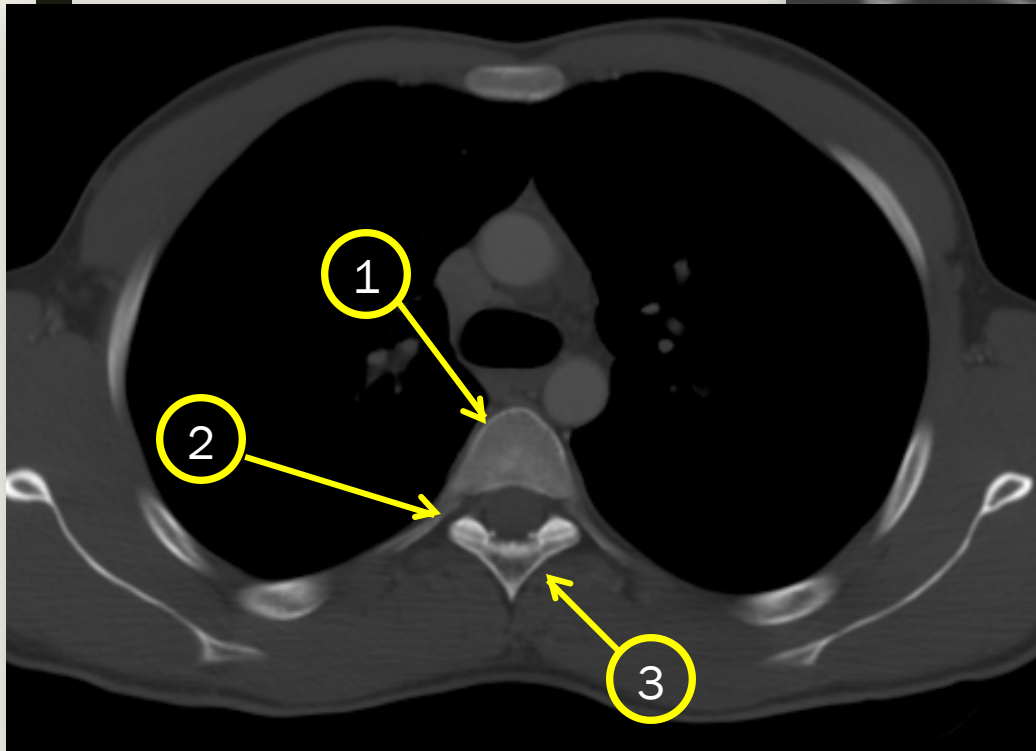
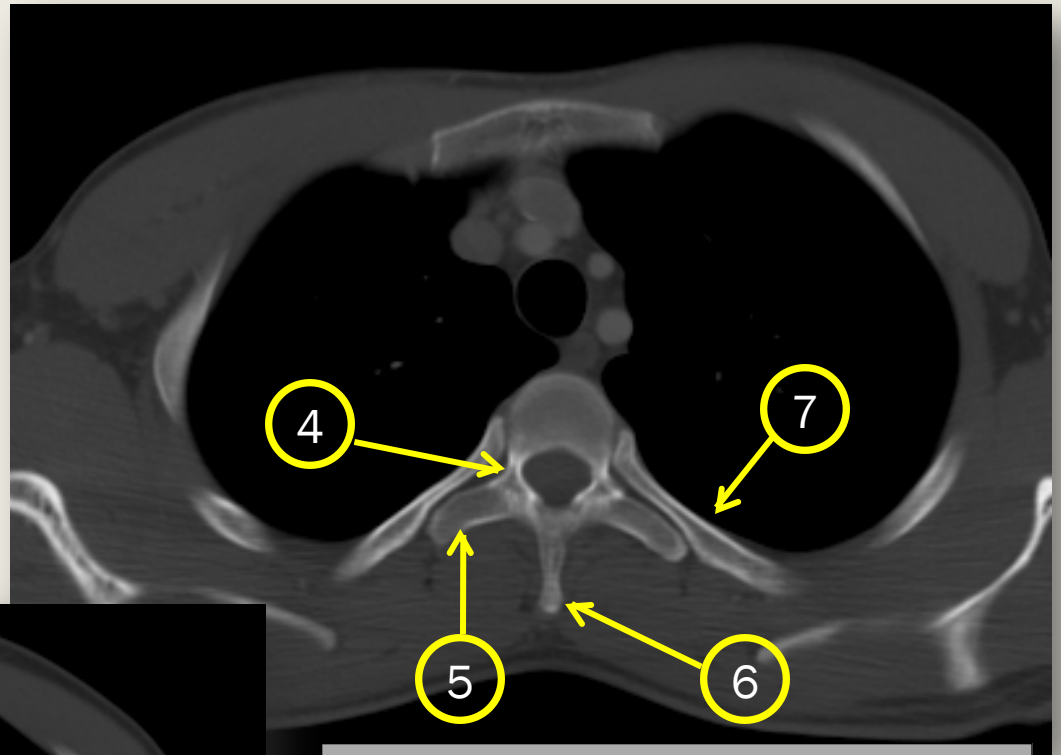
# Cervical spine

# Cervical spine



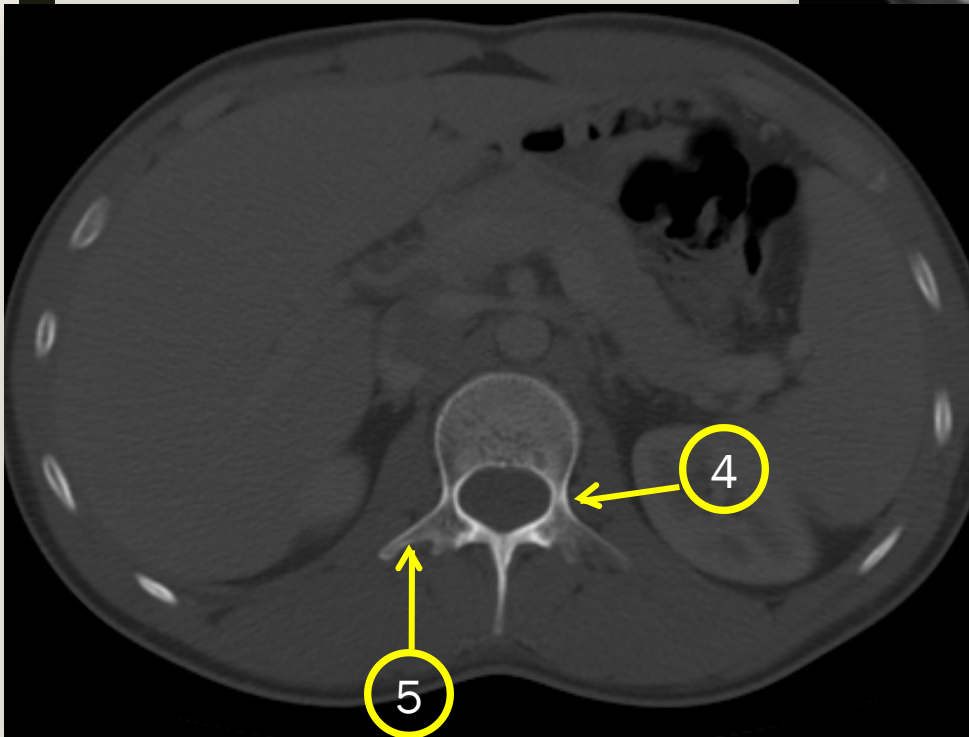
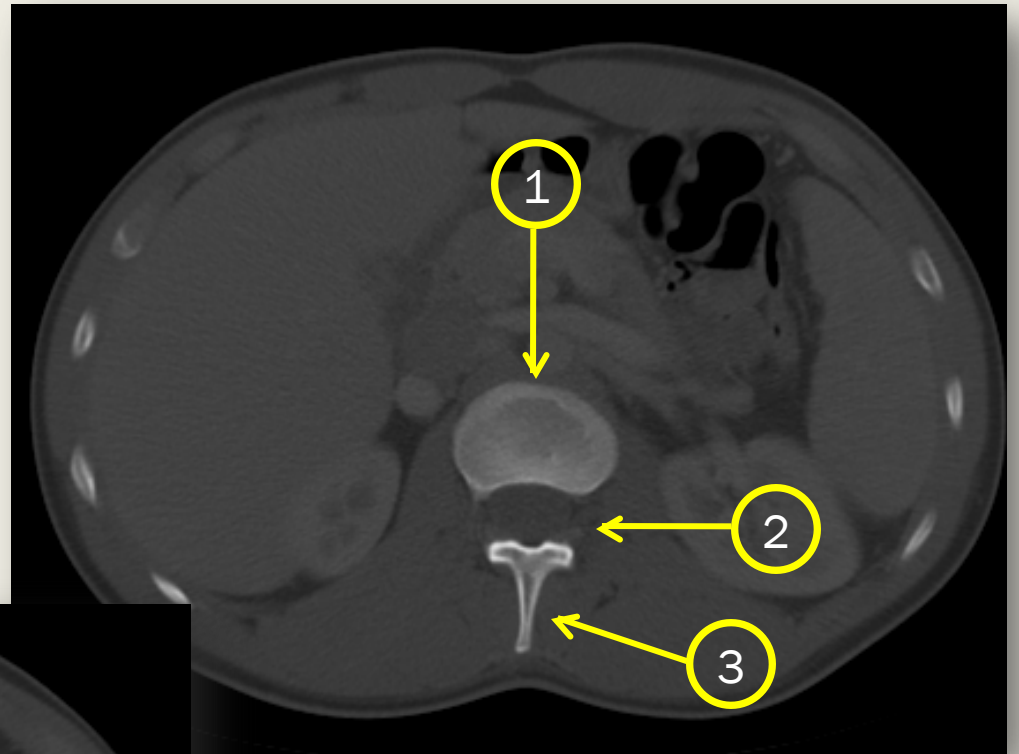
1. Vertebral body
2. Spinous process
3. Pedicle
4. Lamina
5. Transverse foramen

# Thoracic spine



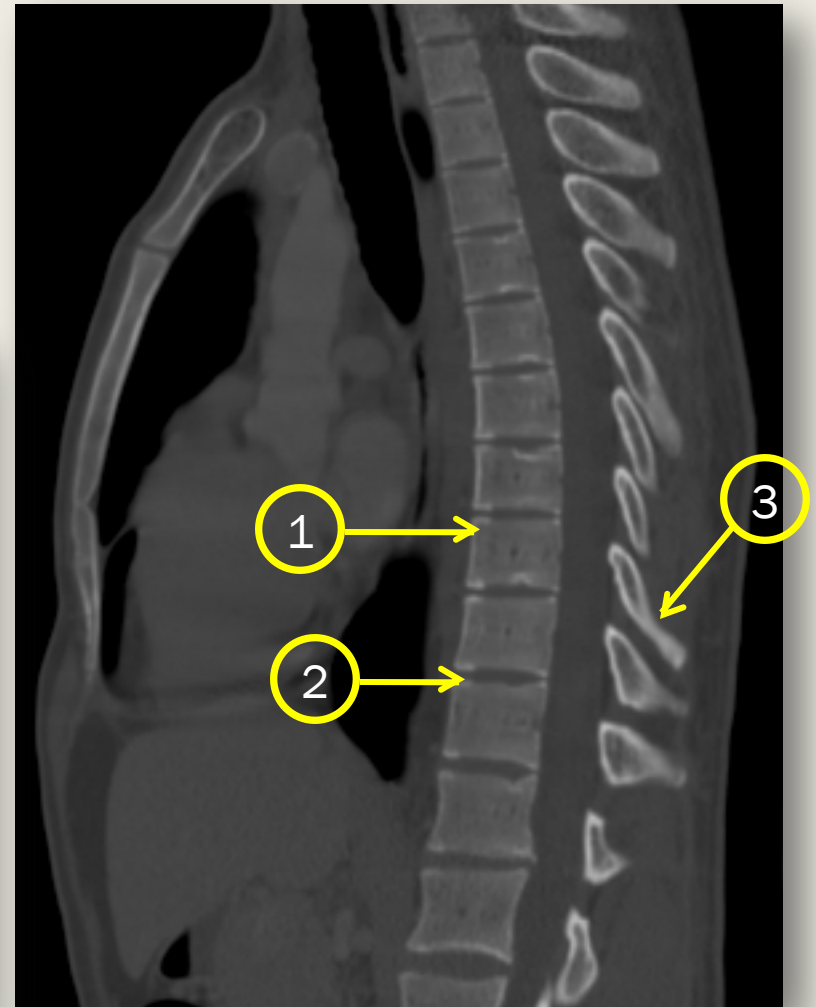
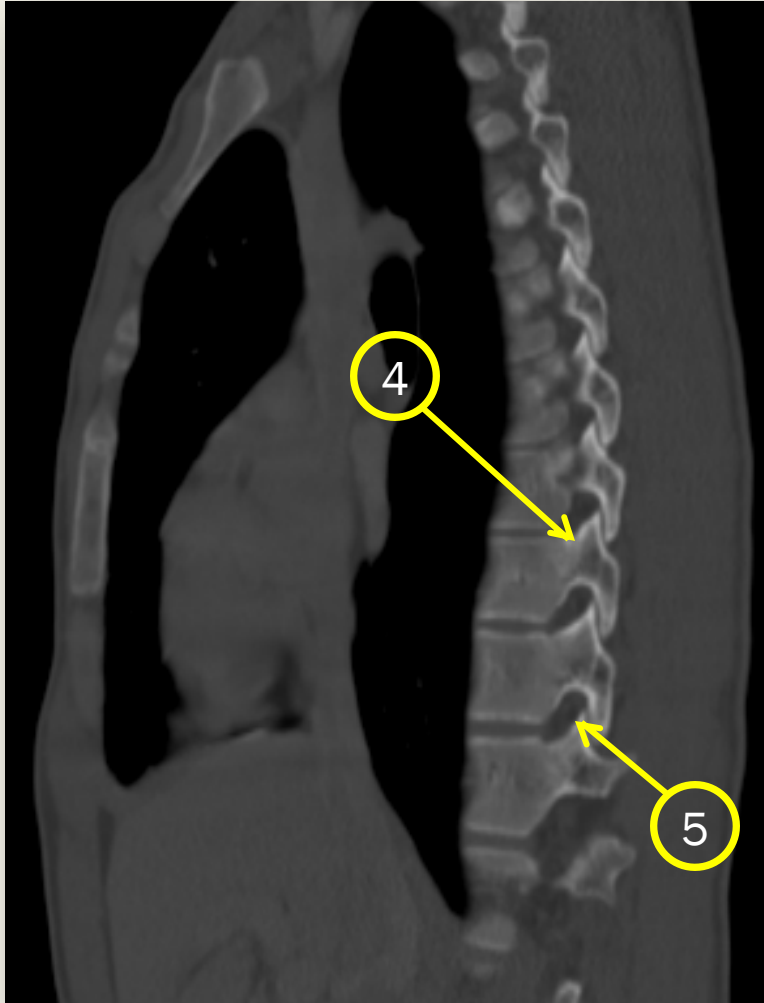
1. Vertebral body
2. Neural foramen
3. Lamina
4. Pedicle
5. Transverse process
6. Spinous process
7. Rib

# Lumbar spine



1. Vertebral body
2. Neural foramen
3. Spinous process
4. Pedicle
5. Transverse process

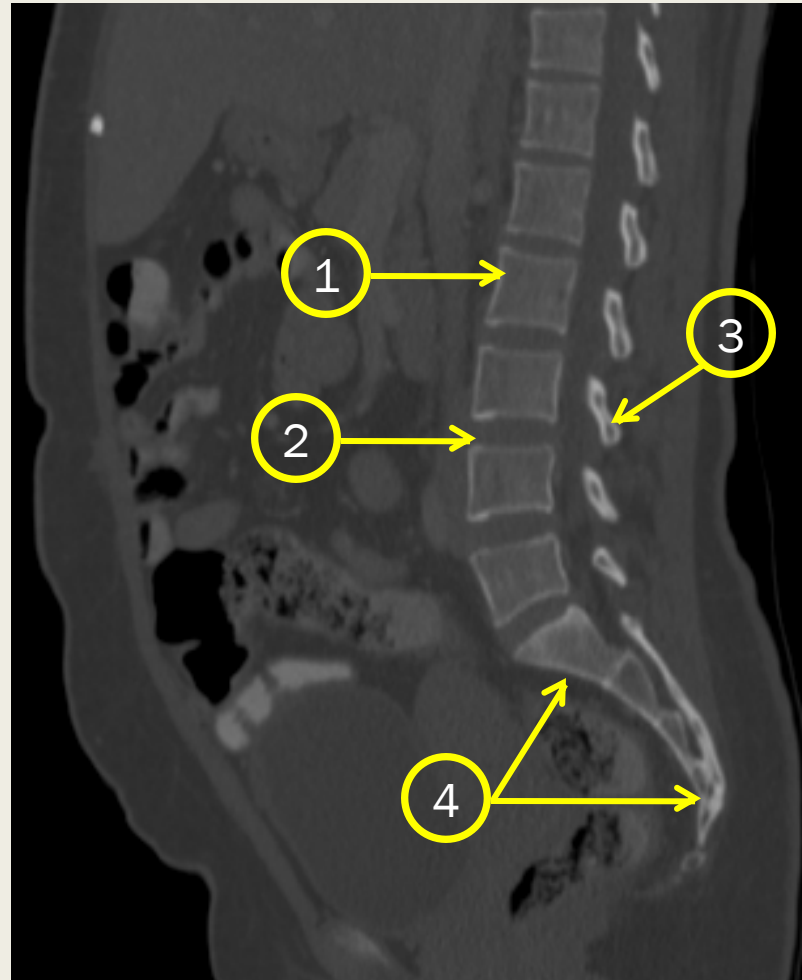
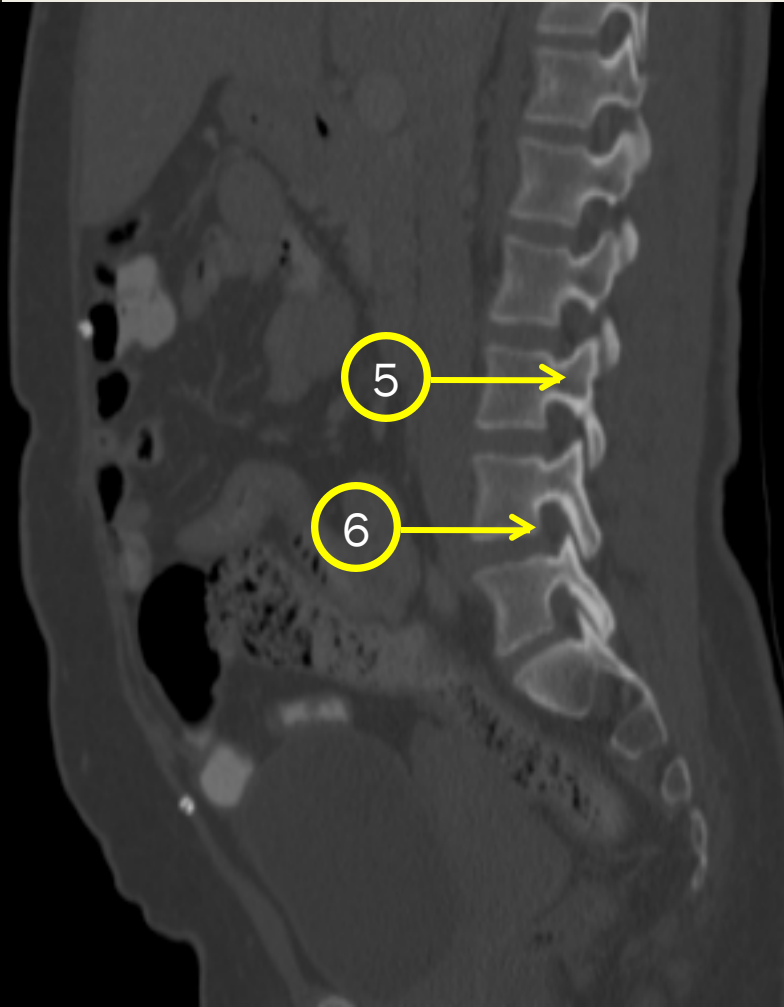
## Dorsal spine



1. Vertebral body
2. Intervertebral disc
3. Spinous process
4. Pedicle
5. Neural foramen



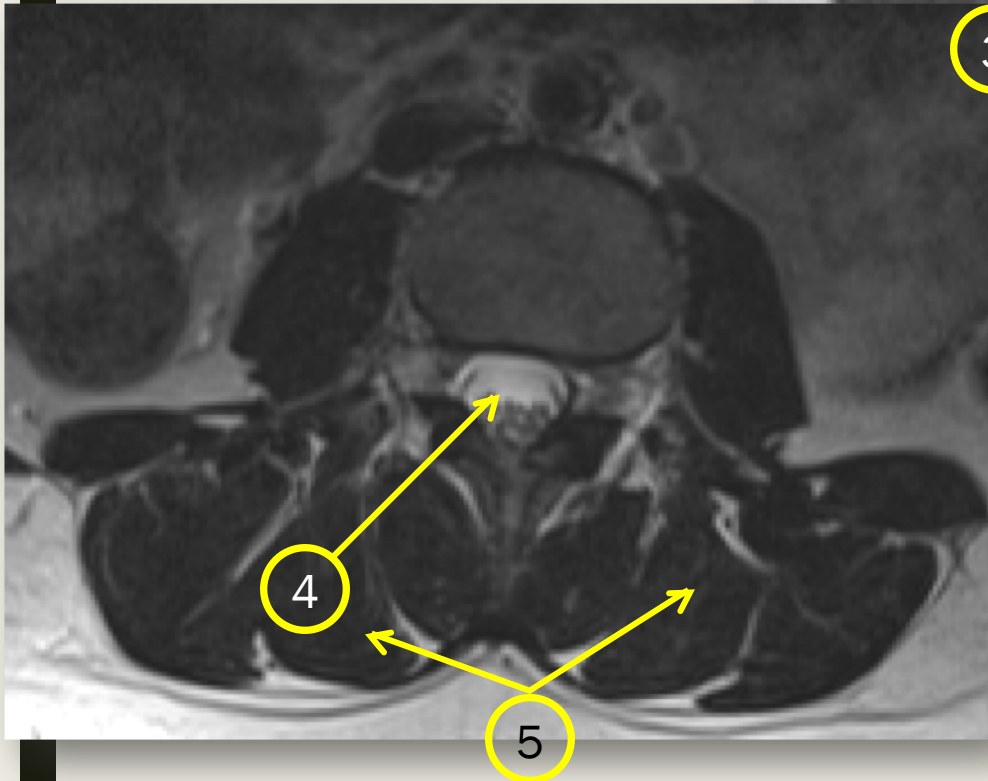
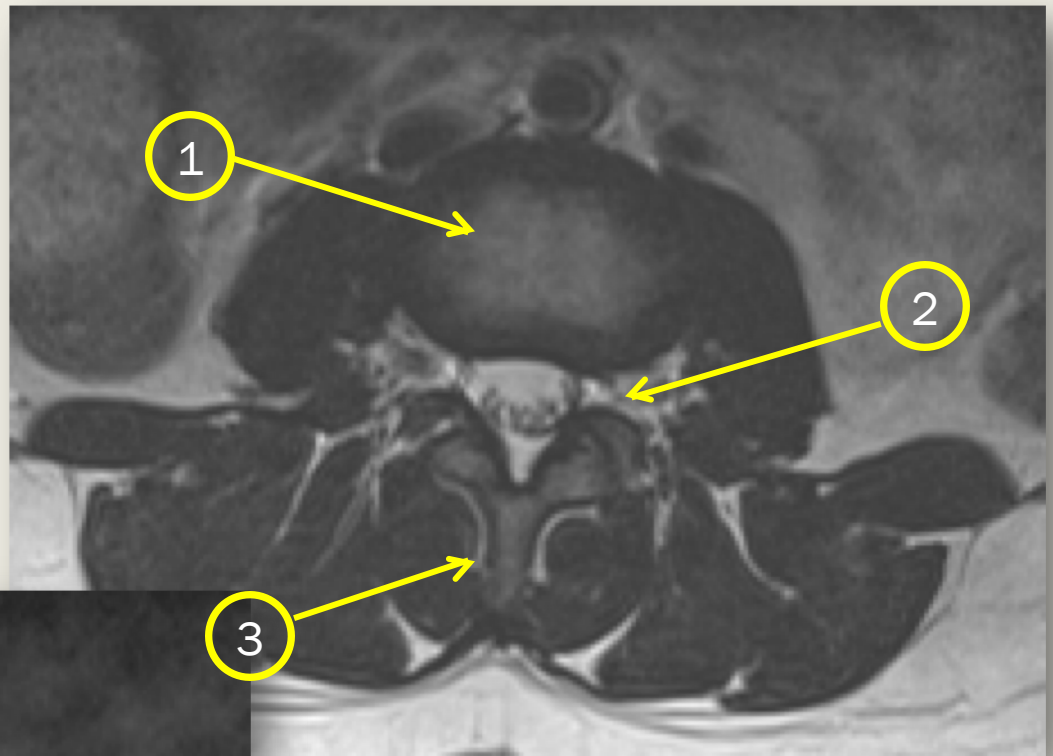
# Lumbosacral spine



1. Vertebral body
2. Intervertebral disc
3. Spinous process
4. Sacrum
5. Pedicle
6. Neural foramen

**MRI**

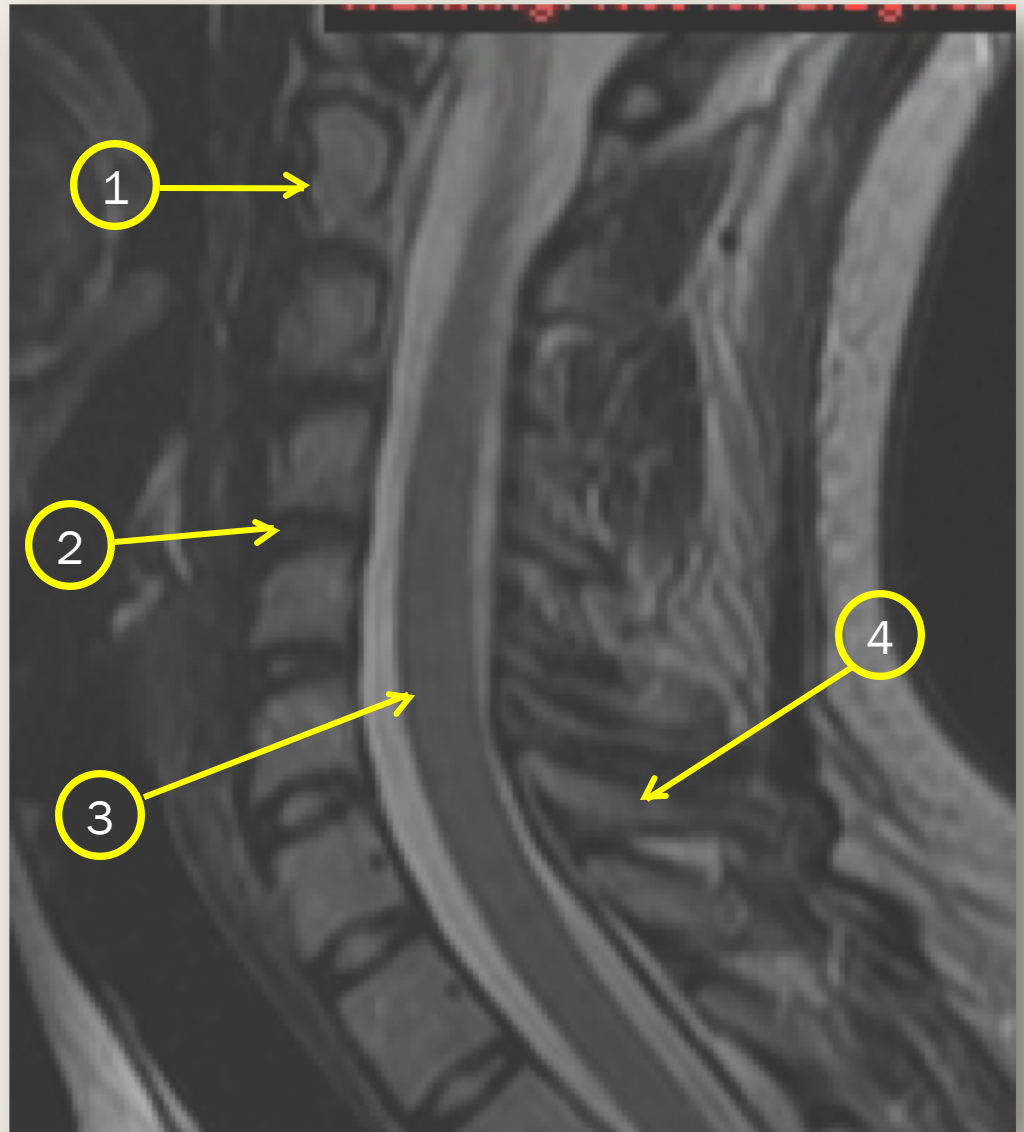
# Lumbar spine



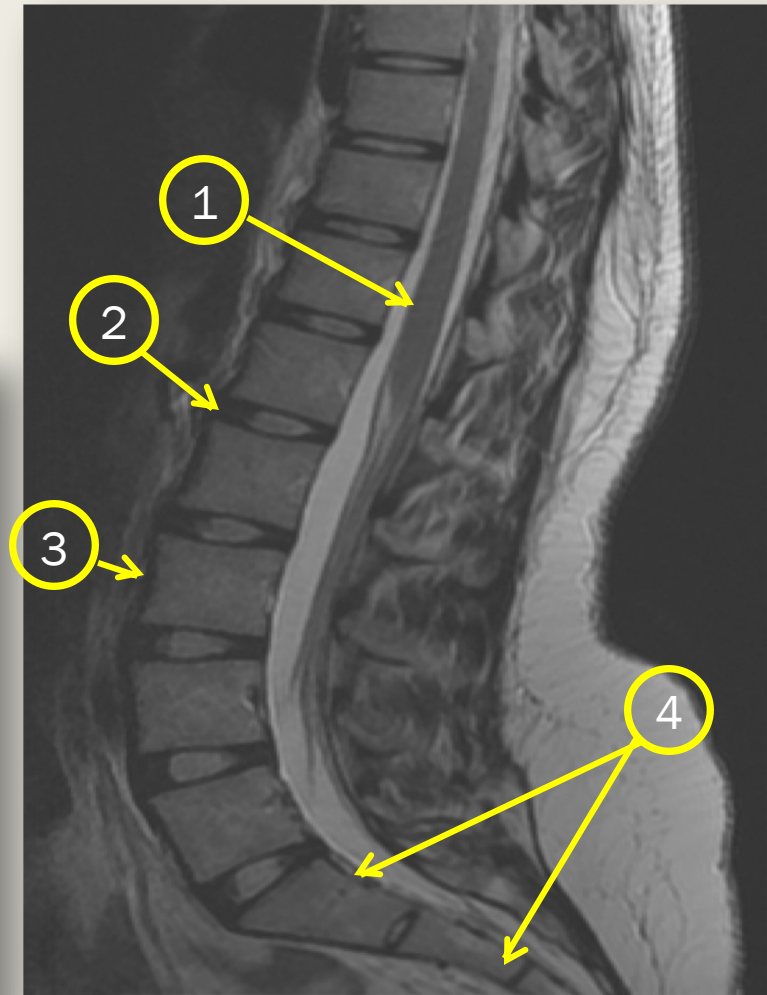
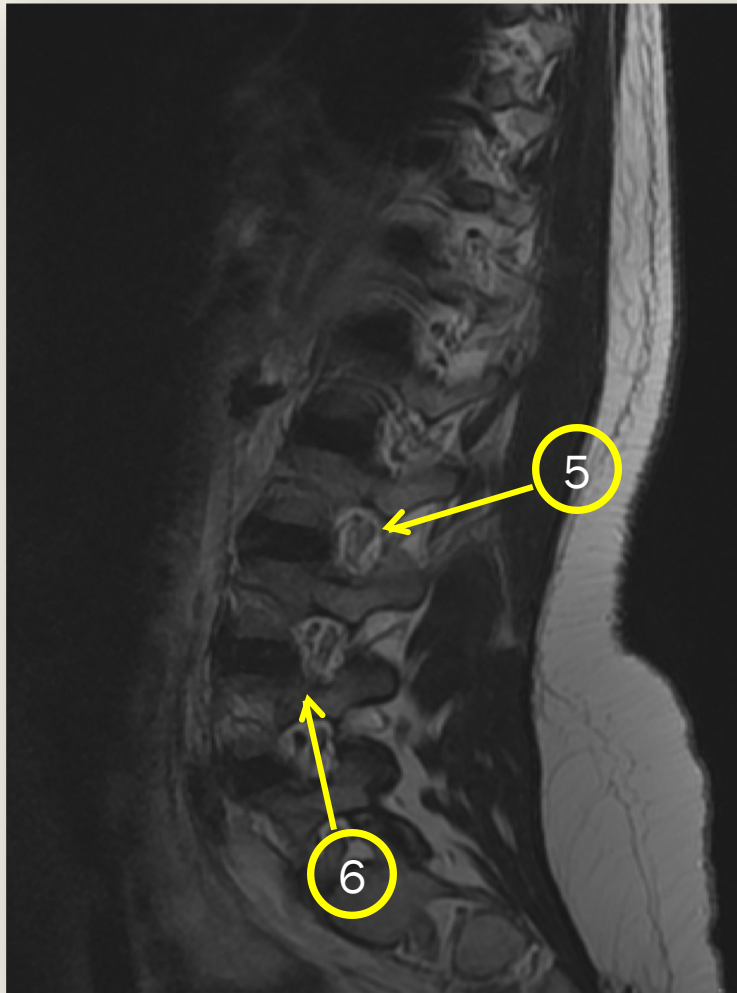
1. Vertebral body
2. Neural foramen
3. Spinous process
4. Thecal sac
5. Para-spinal muscles

# Cervical spine

1. C2
2. Disc
3. Spinal cord
4. Spinous process



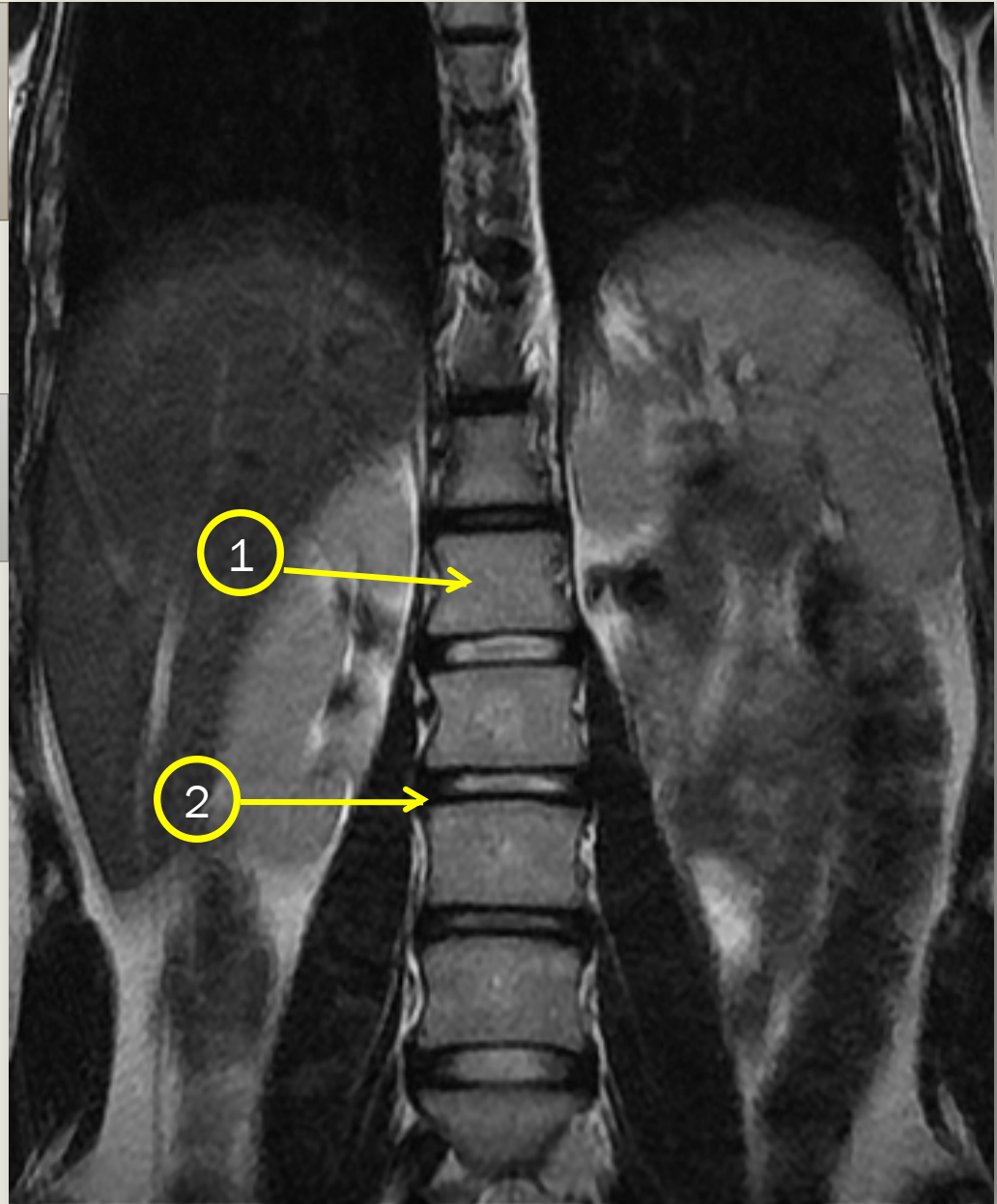
# Lumbosacral spine



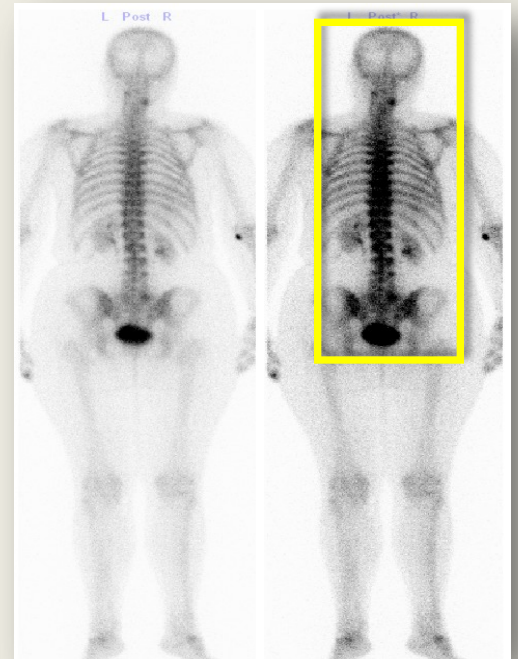
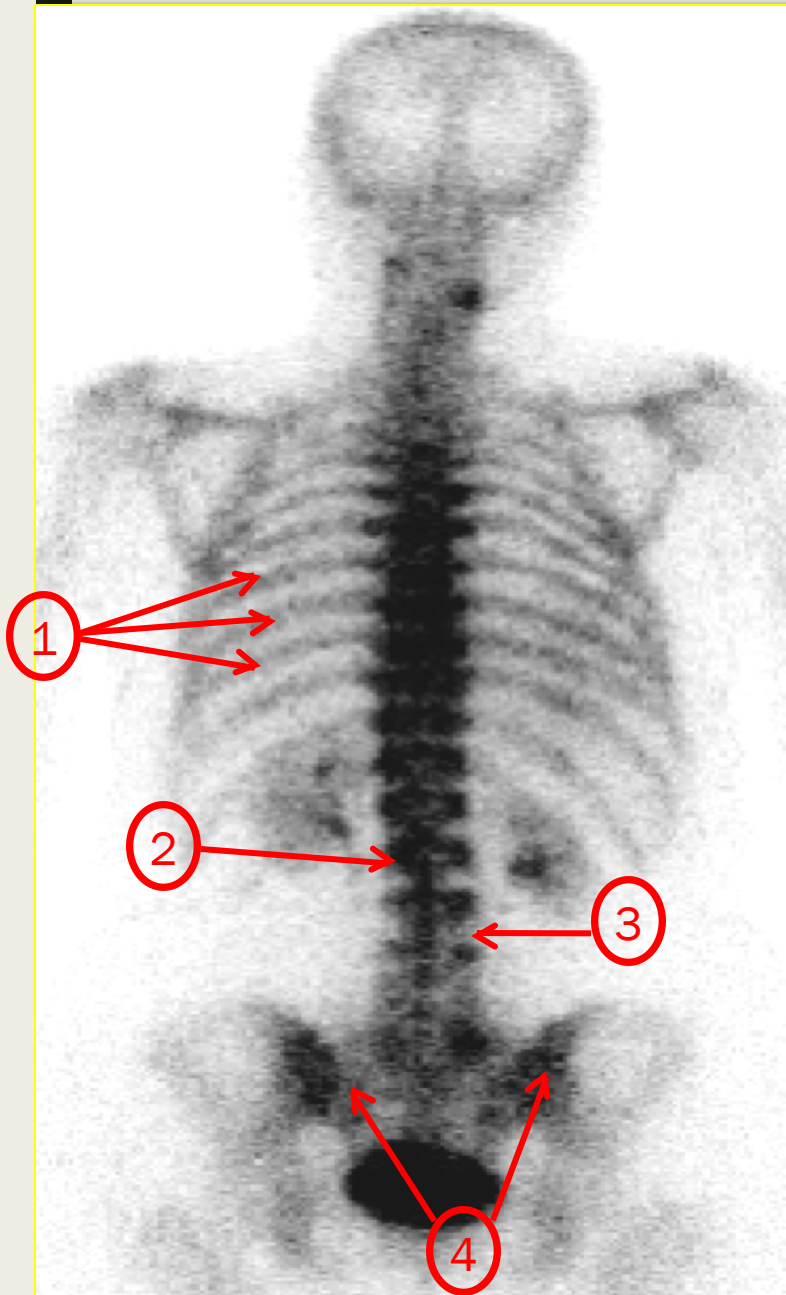
1. Spinal cord
2. Disc
3. Vertebral body
4. Sacrum
5. Neural foramen
6. Pedicle

# Lumbar spine

1. Vertebral body
2. disc



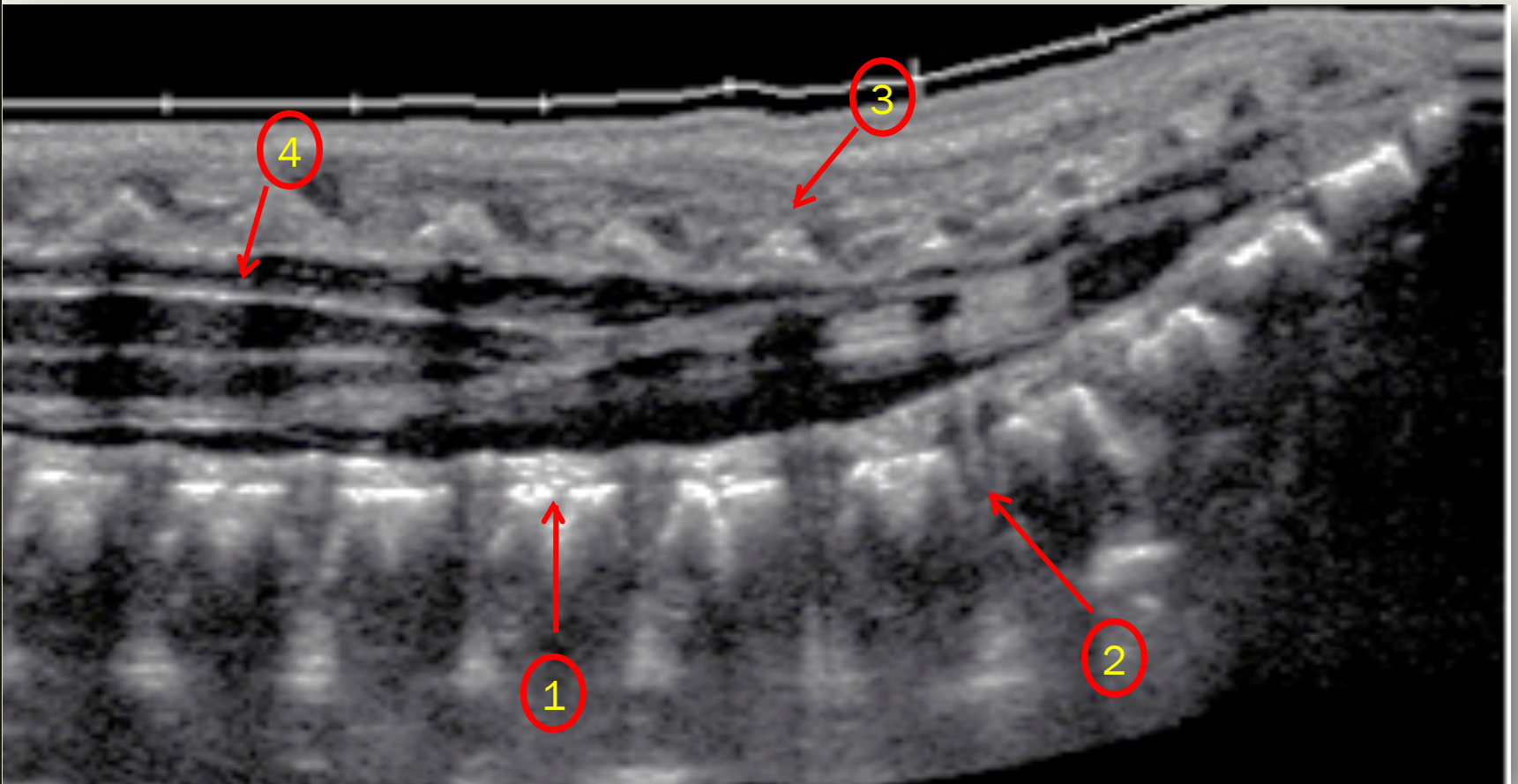
# Nuclear scan



1. Ribs
2. Vertebral body
3. Disc
4. sacrum



# ULTRASOUND



1. Vertebral body
2. Disc
3. Spinous process
4. Spinal cord

THE END