




RADIOLOGICAL ANATOMY OF THE VERTEBRAE

Practical (1)
Radiology

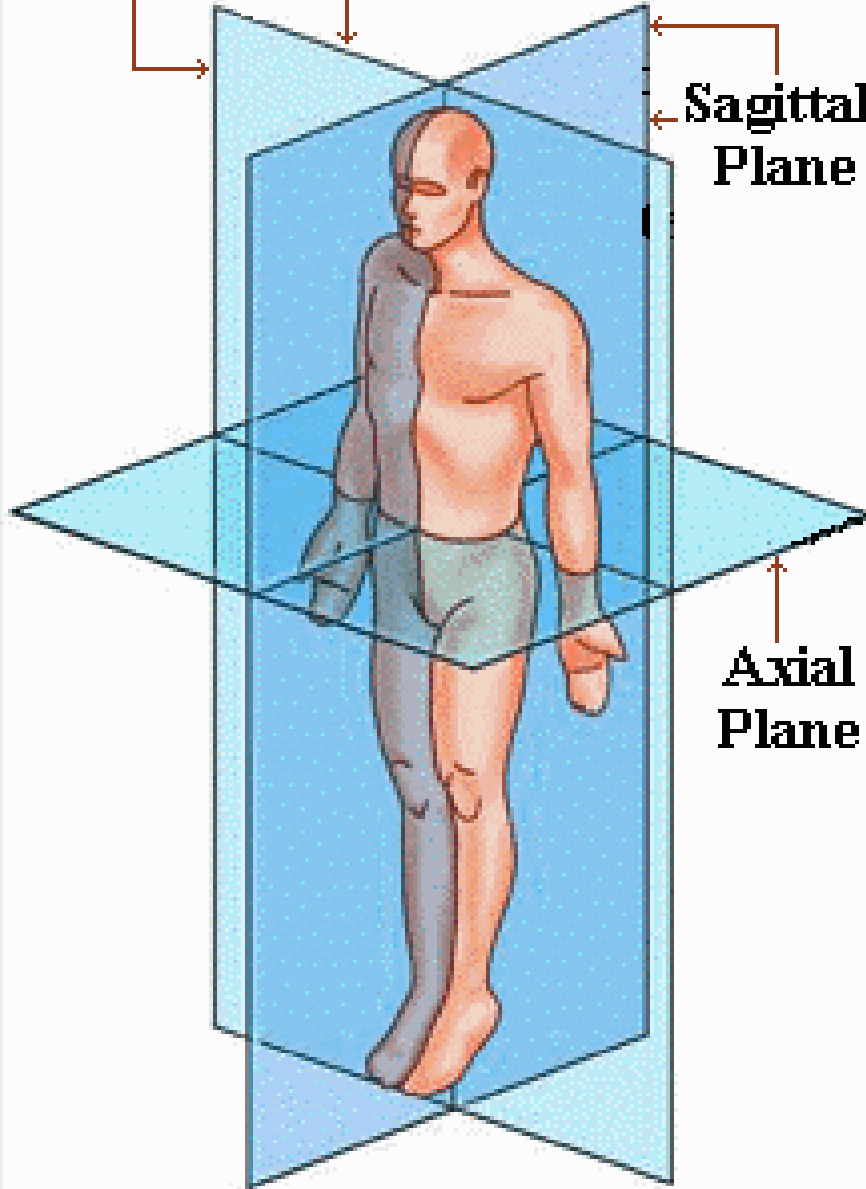


Which of following radiological modalities can be used in imaging the vertebra?

- A. X ray
- B. CT scan
- C. Nuclear scan
- D. MRI
- E. US

ALL can be used

Coronal Plane

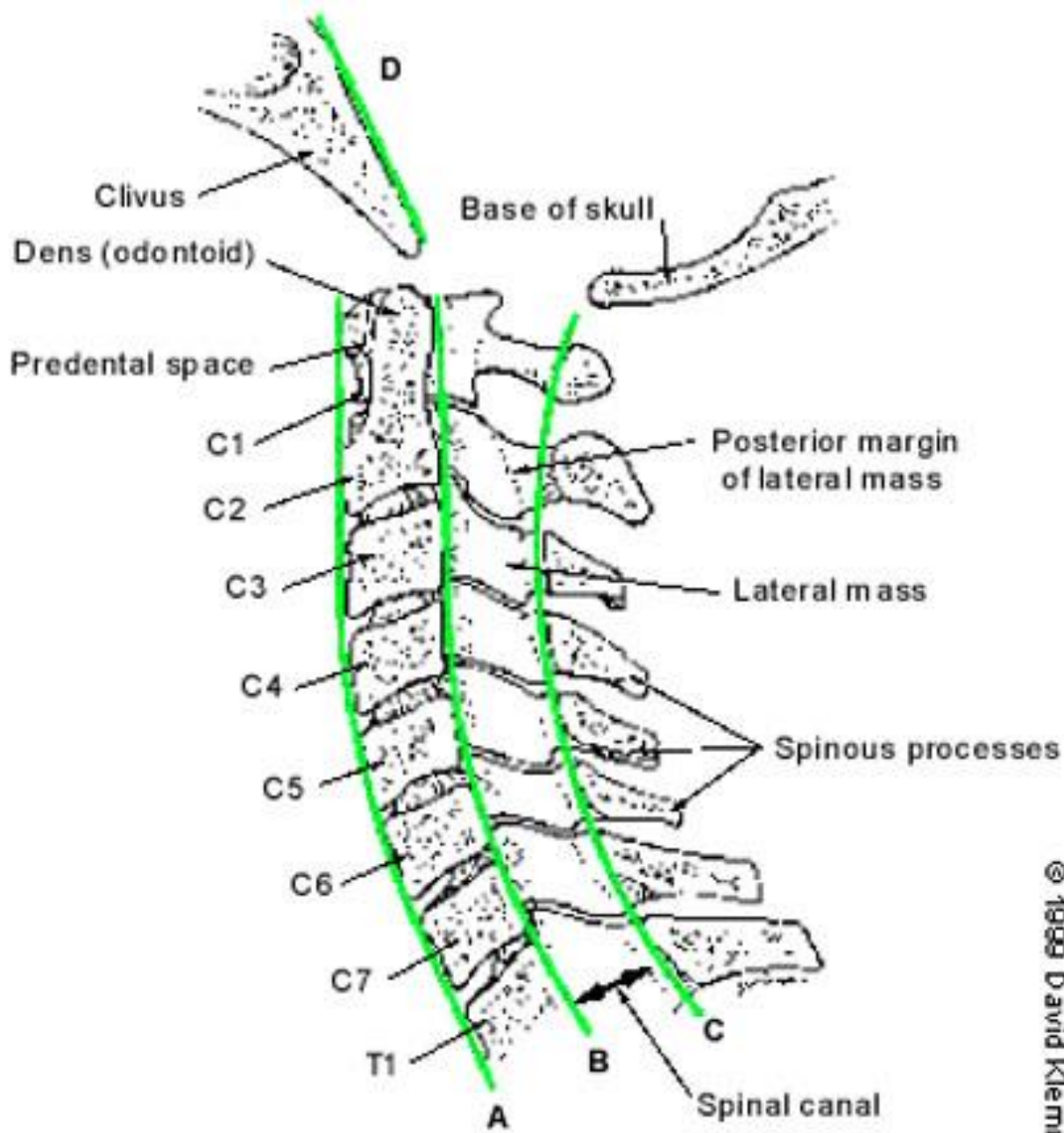


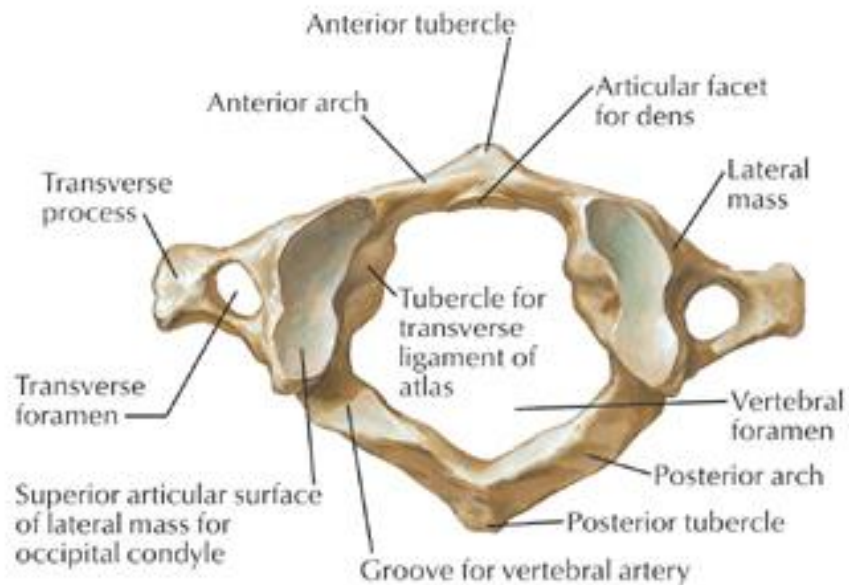
Sagittal Plane

Axial Plane

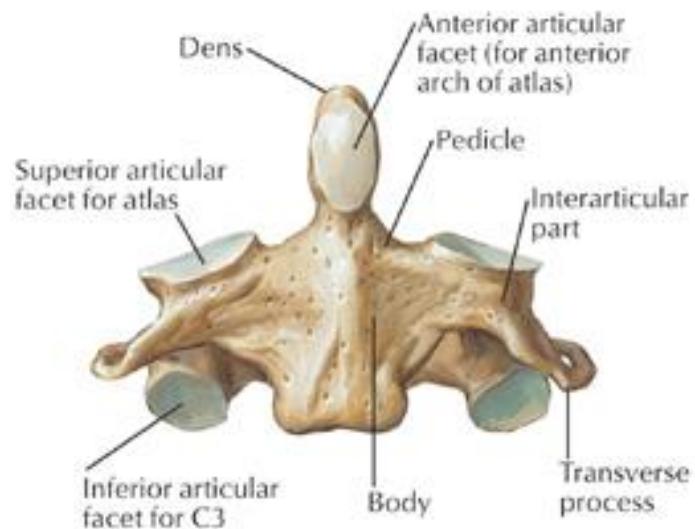
X-ray

Cervical spine

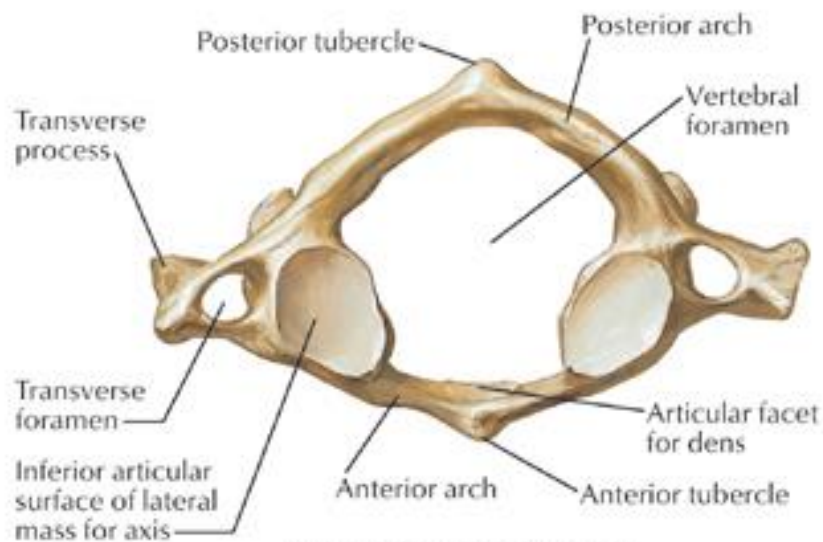




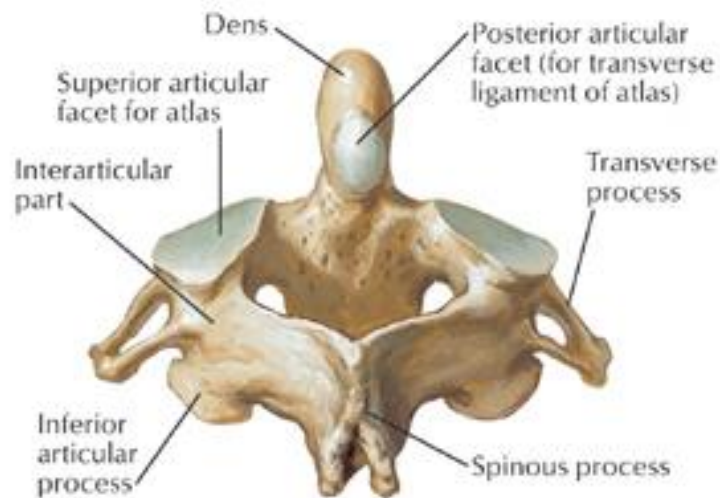
Atlas (C1): superior view



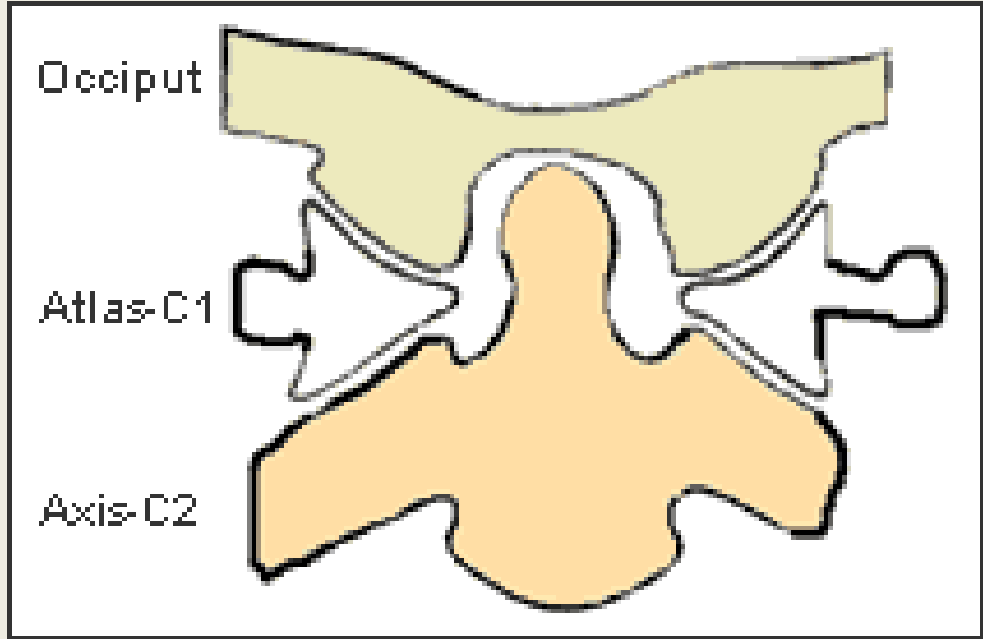
Axis (C2): anterior view

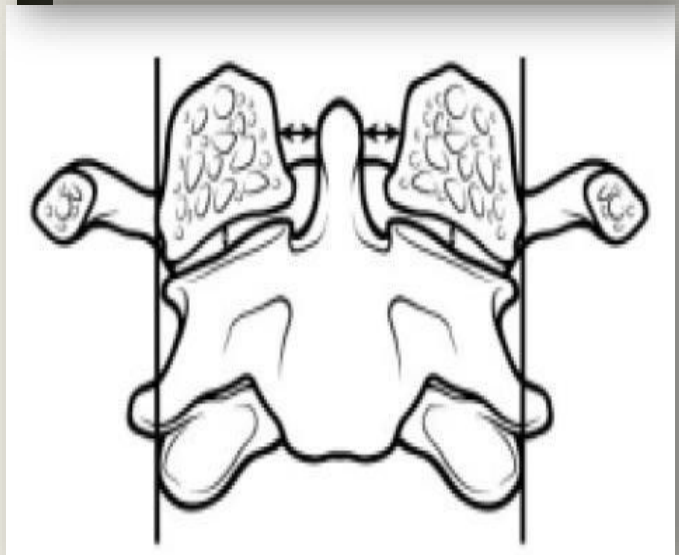
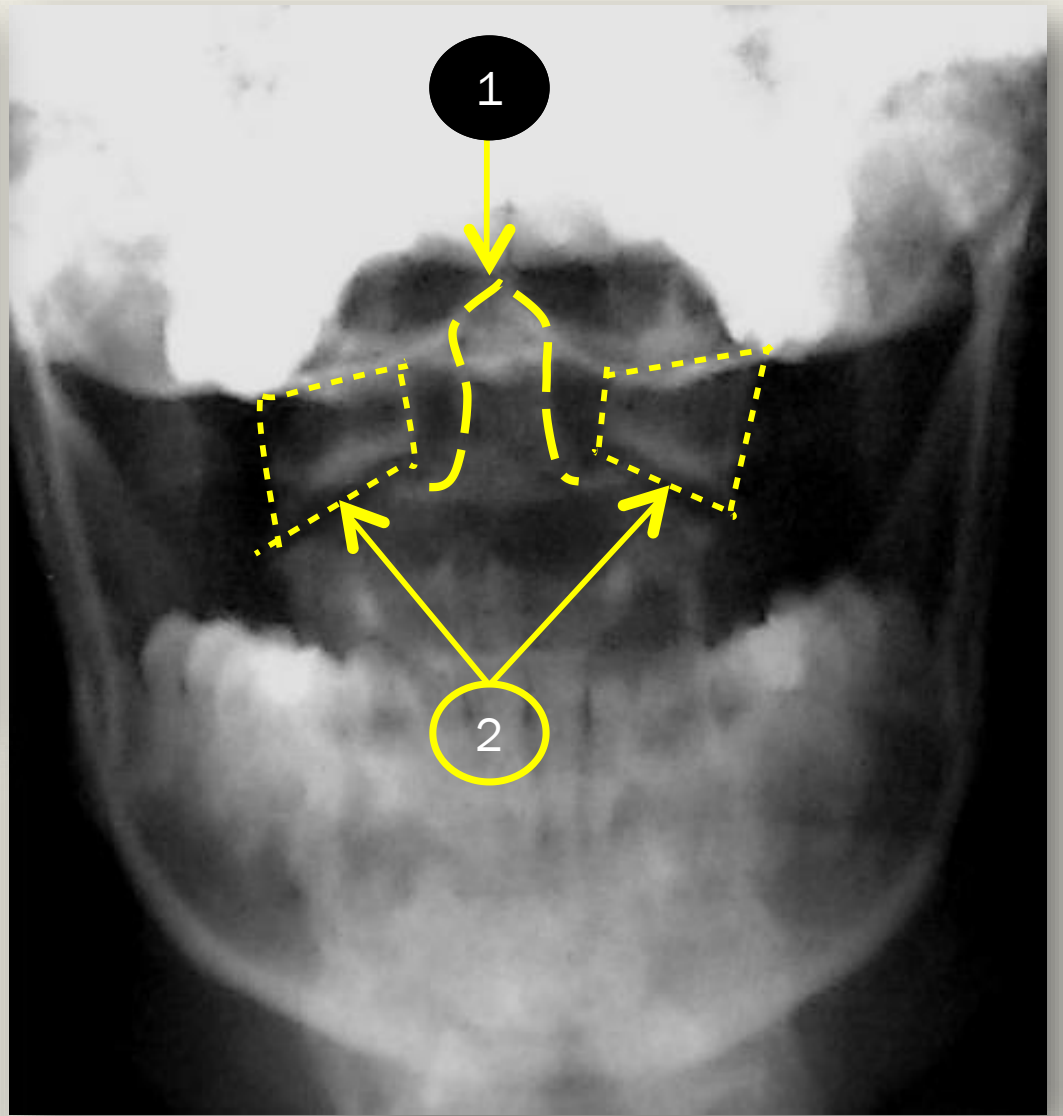


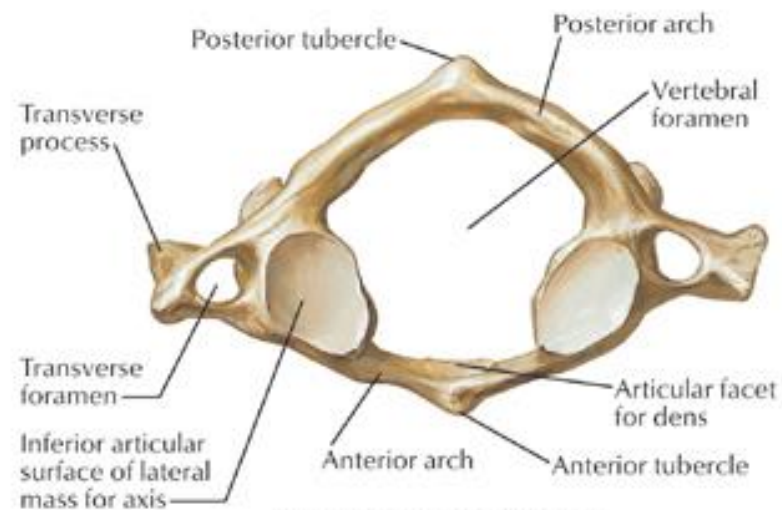
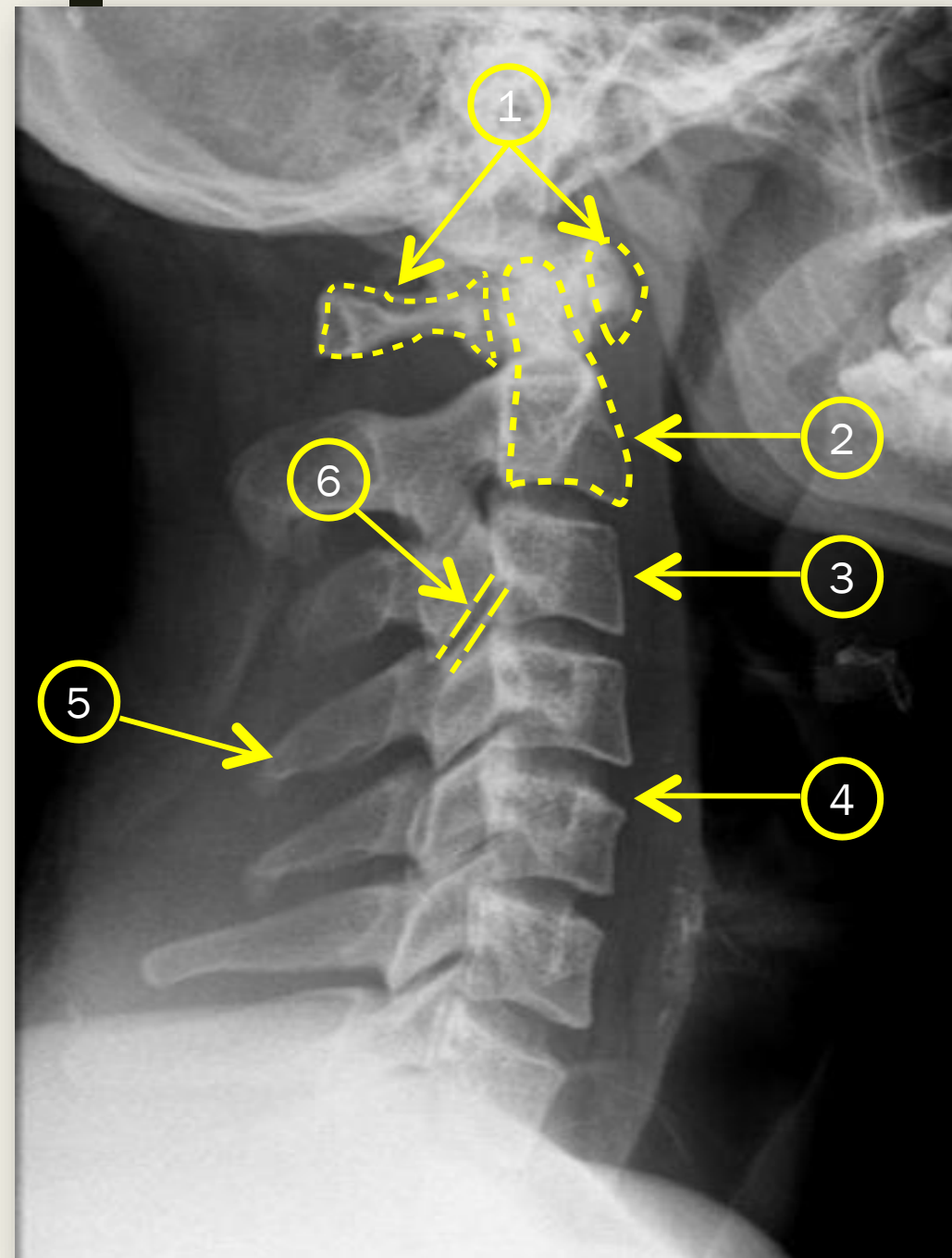
Atlas (C1): inferior view



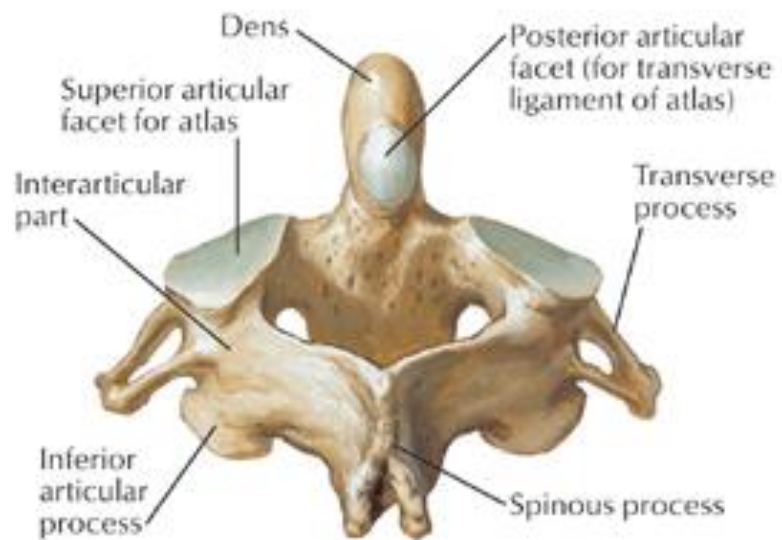
Axis (C2): posterosuperior view



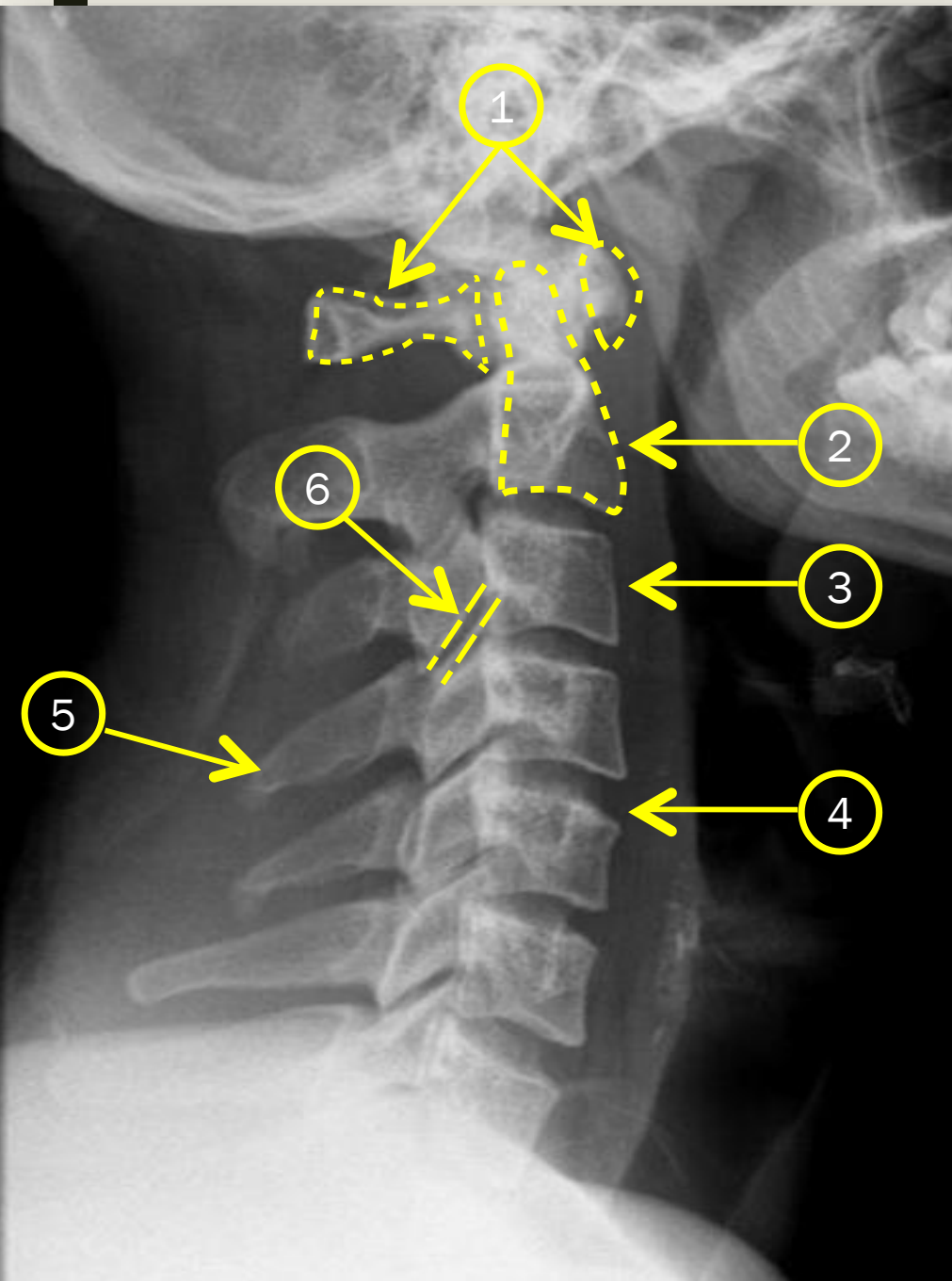




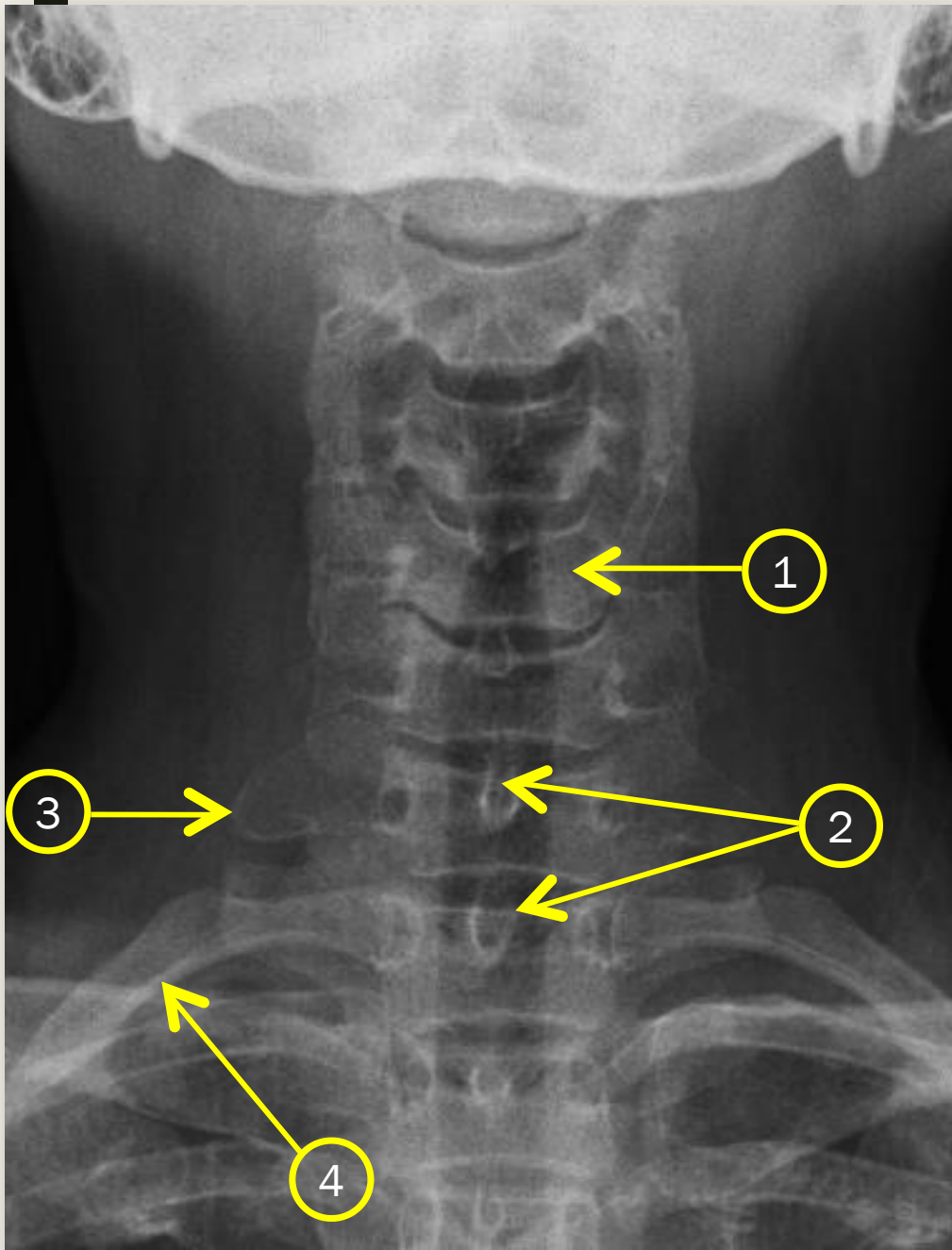
Atlas (C1): inferior view

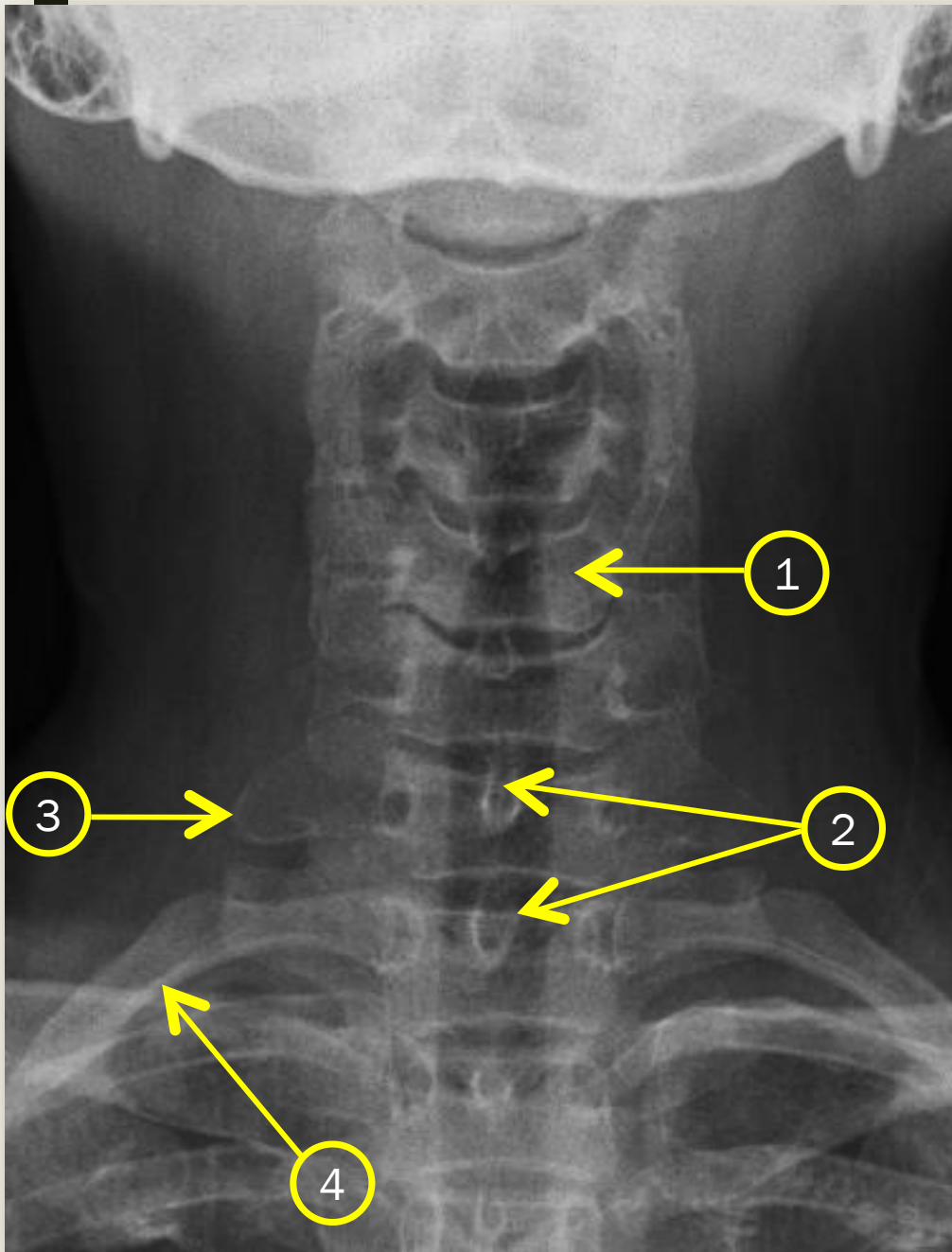


Axis (C2): posterosuperior view



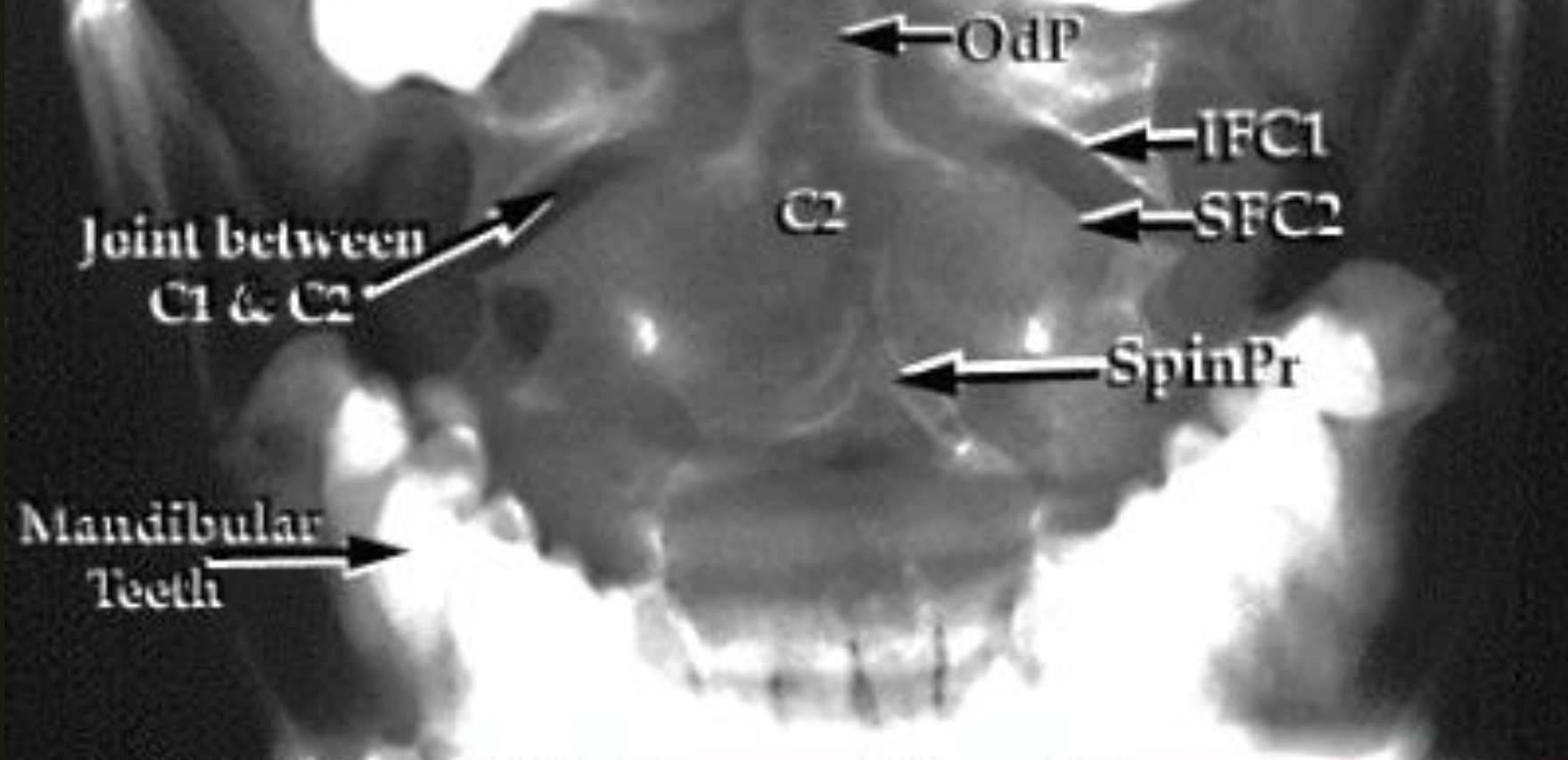
- 1. C1
- 2. C2
- 3. C3
- 4. Intervertebral disc
- 5. Spinous process of C4
- 6. Facet joint





1. Vertebral body C5
2. Spinous process
3. Transverse process
4. First rib

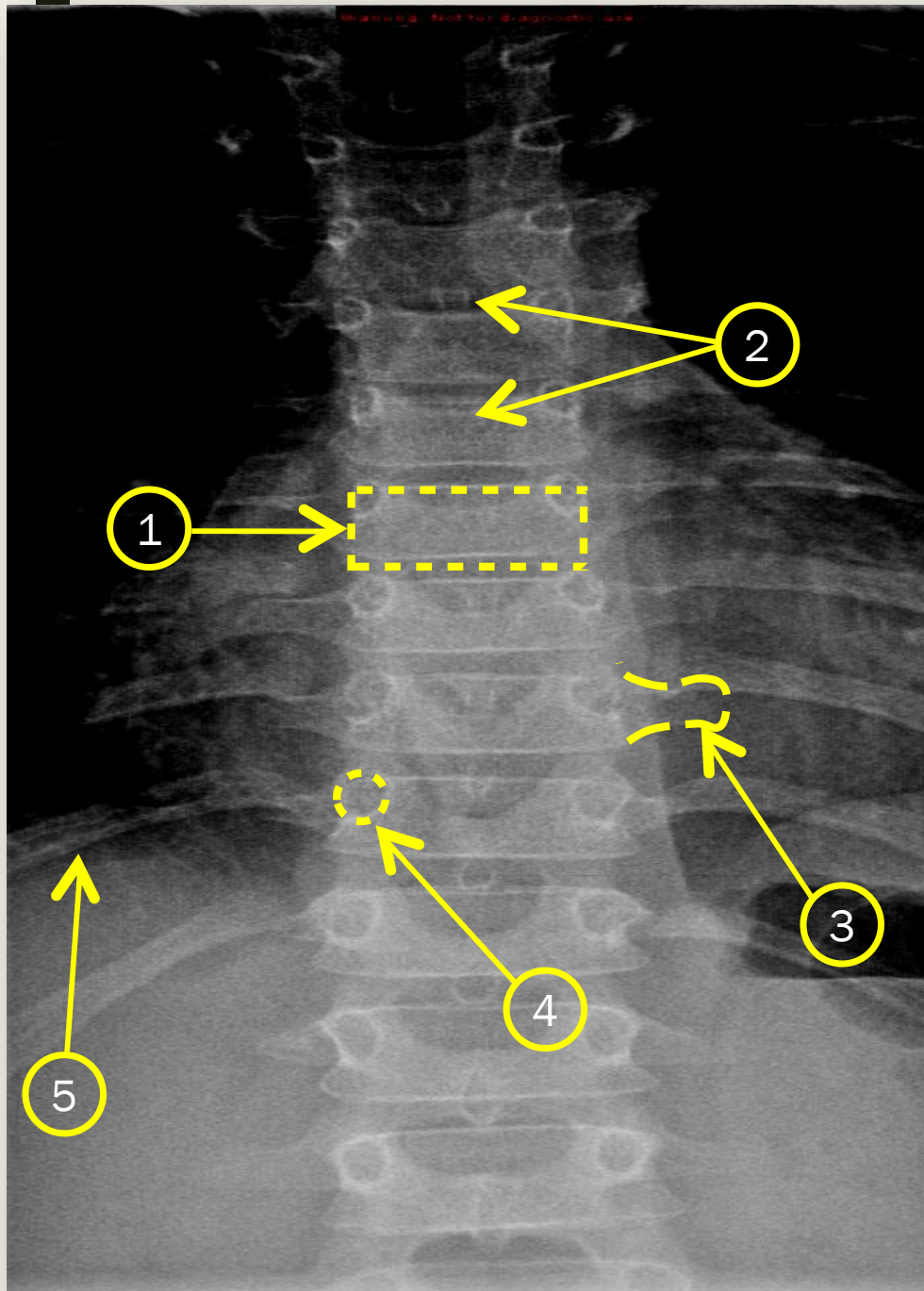
AP
Open Mouth View

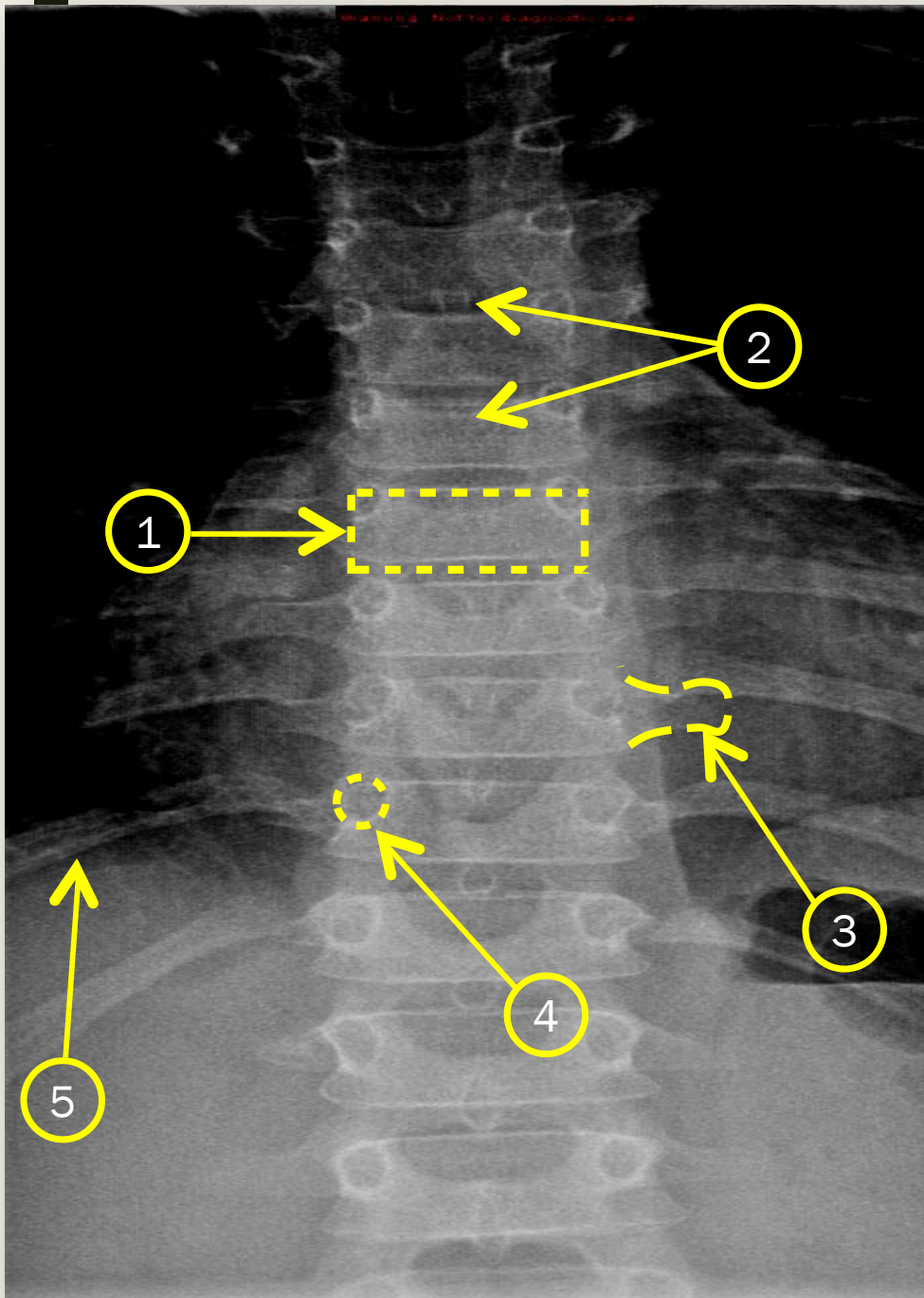


OdP=Odontoid Process (dens)
IFC1=Inferior Facet of C1
SFC2=Superior Facet of C2

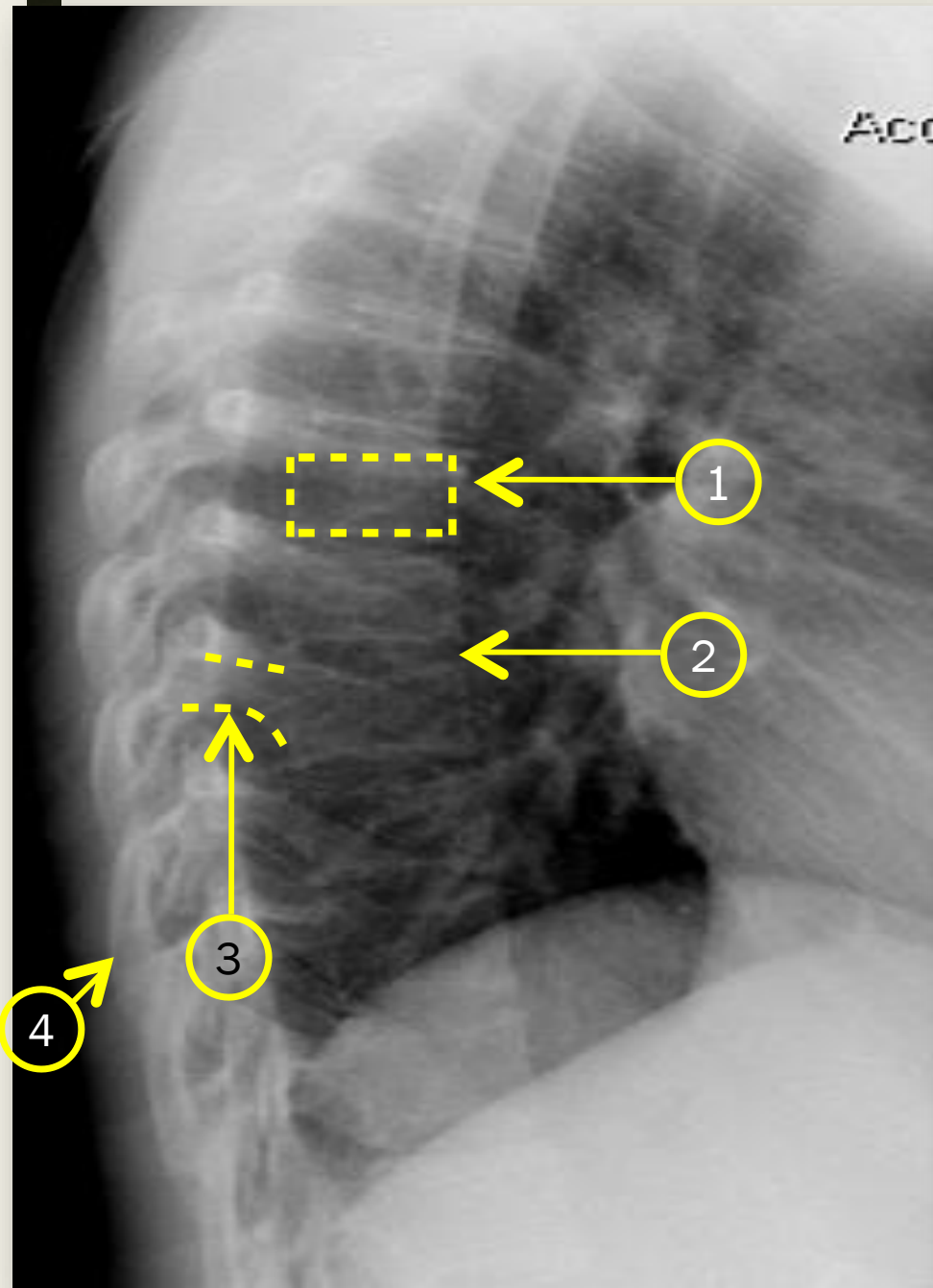
SpinPr=Spinous Process of C2
C2=Cervical Vertebra 2 (Axis)

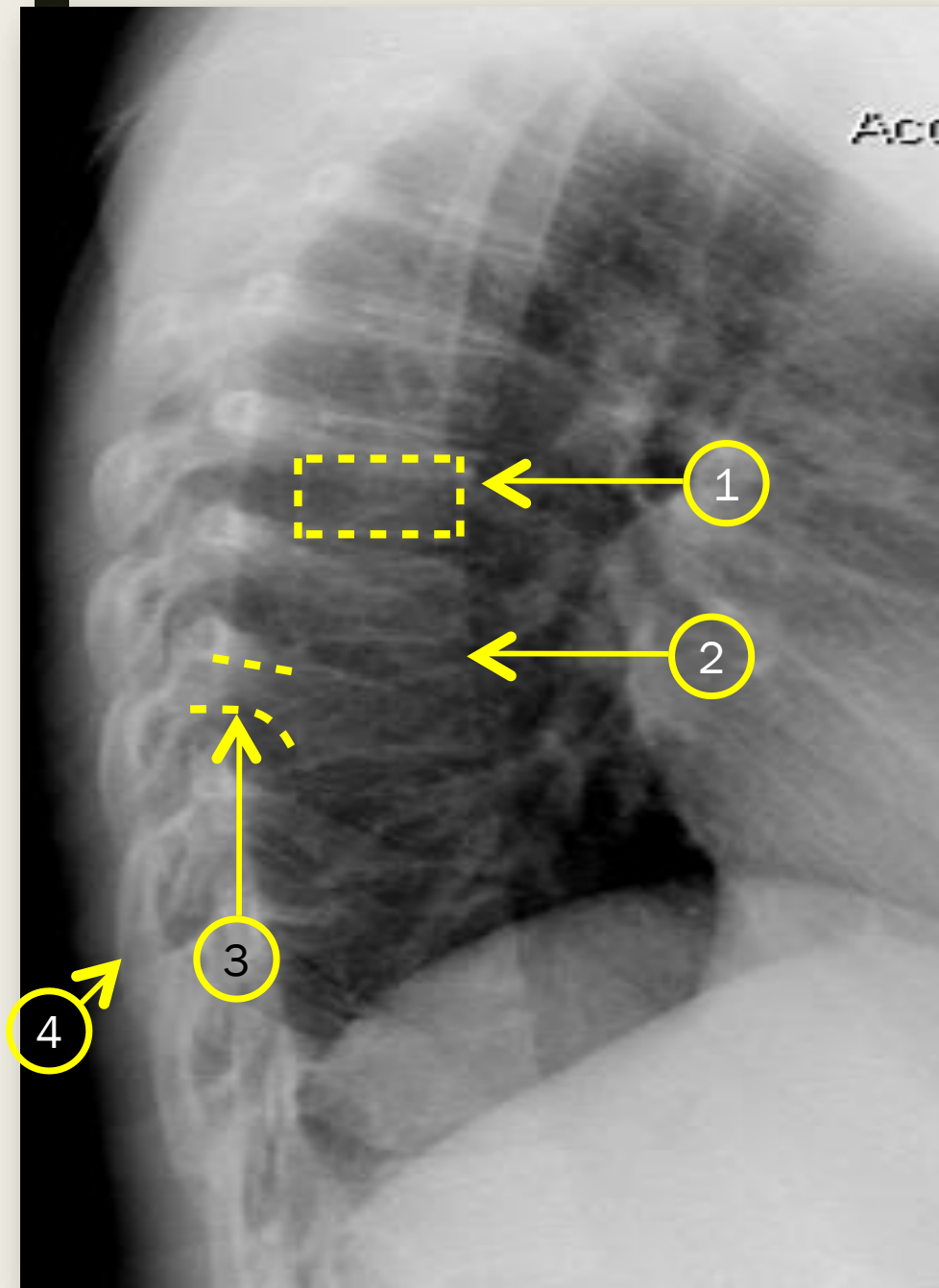
Thoracic spine





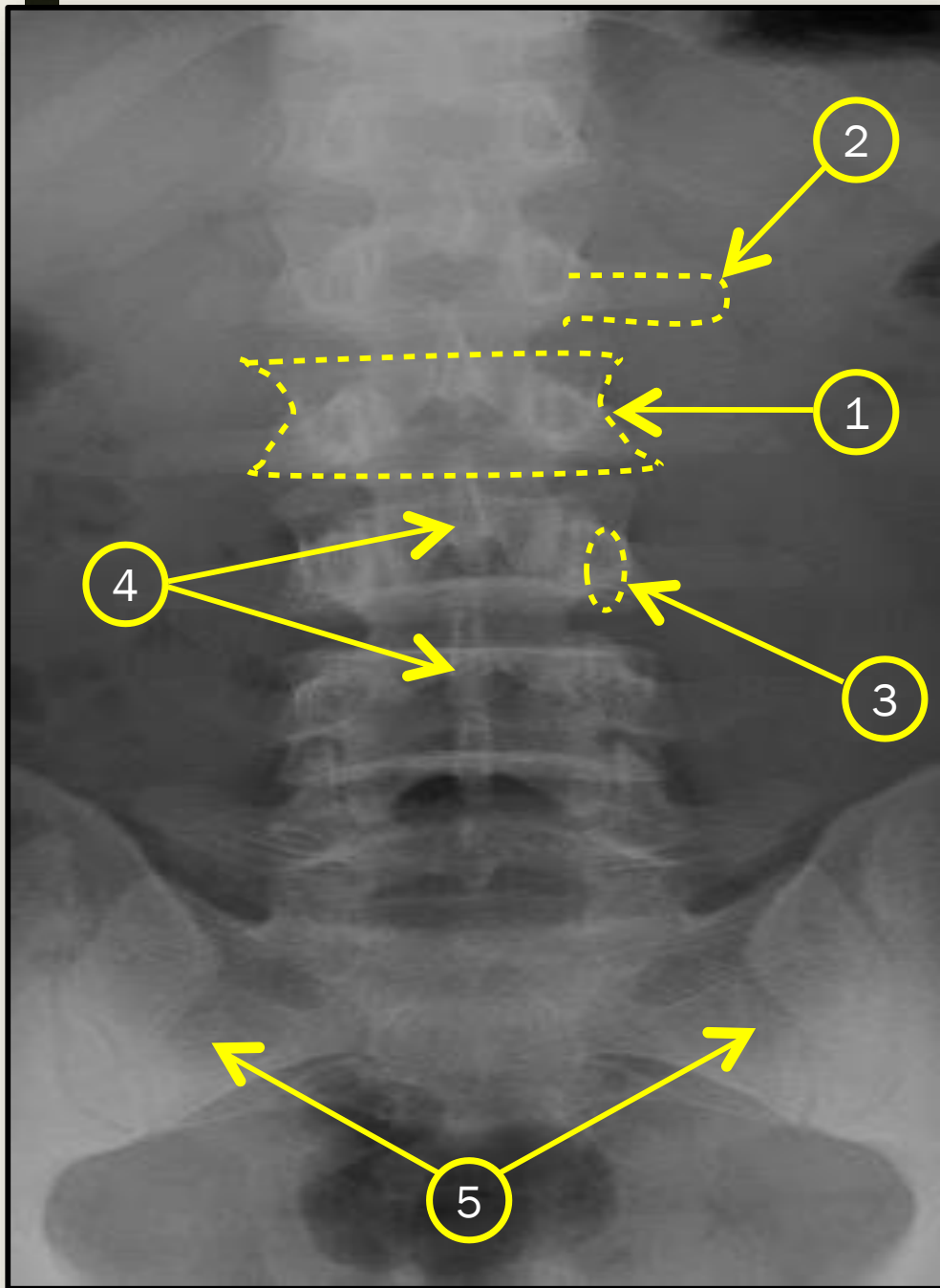
1. Vertebral body
2. Spinous process
3. Transverse process
4. Pedicle
5. Rib



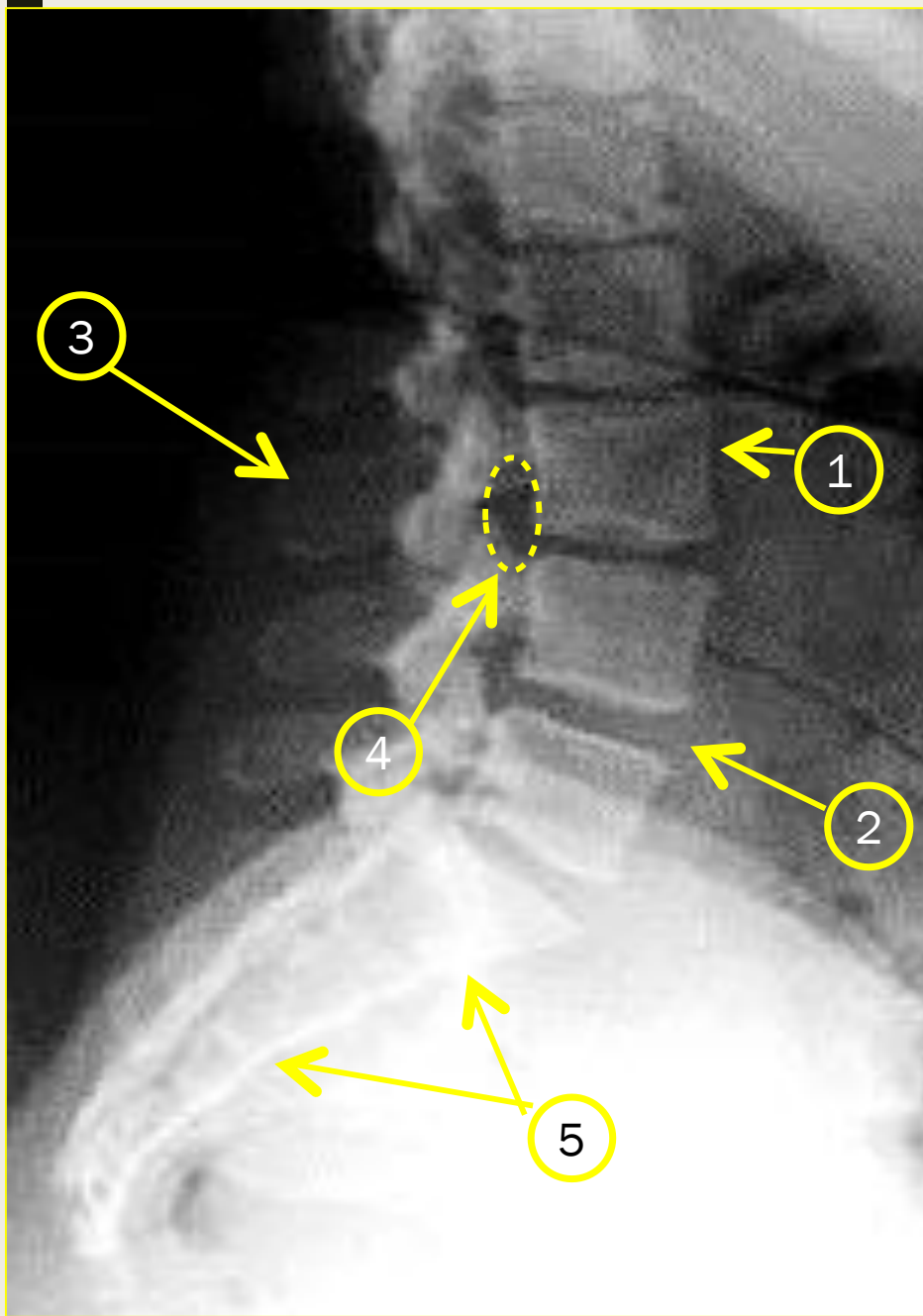


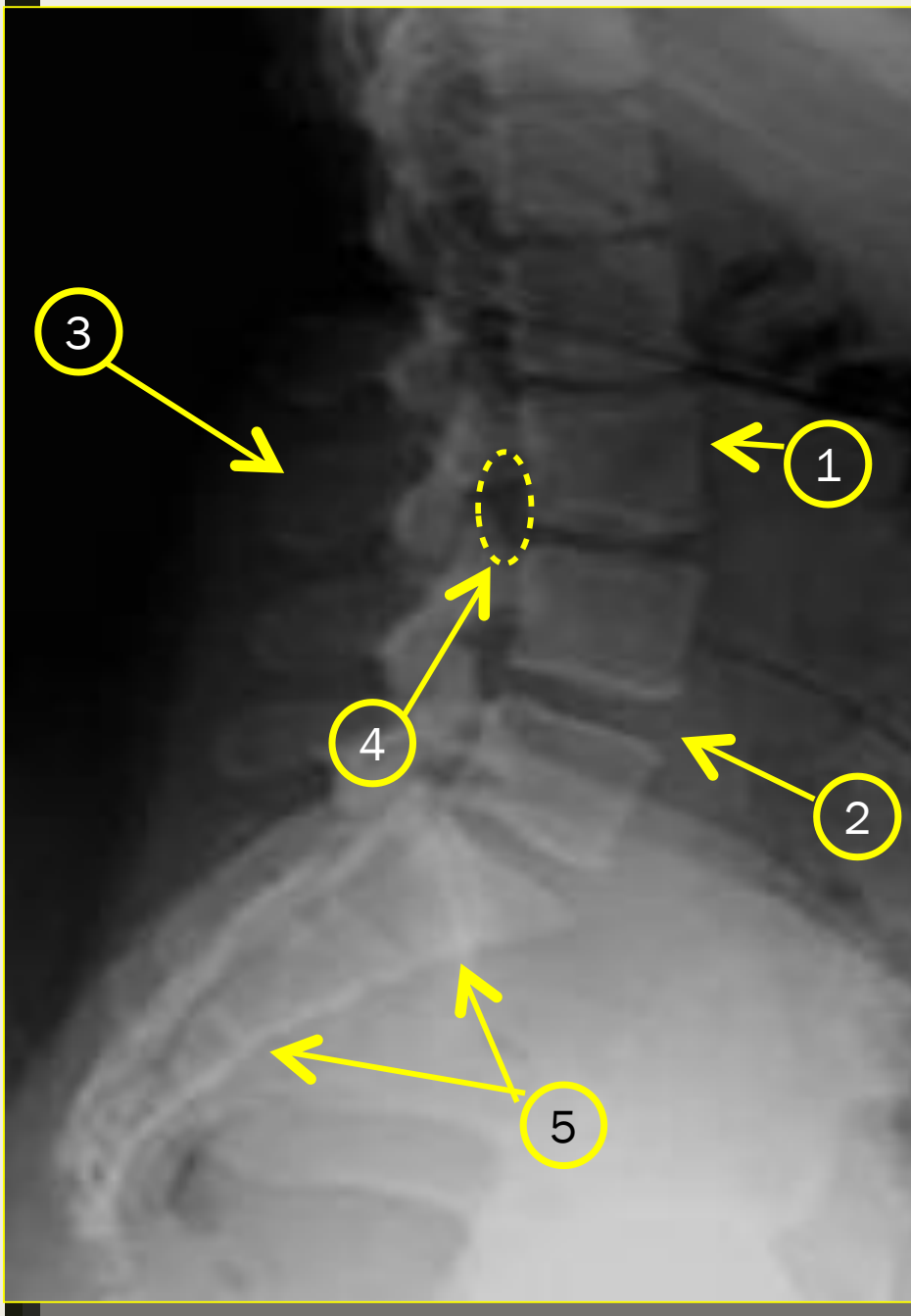
1. Vertebral body
2. Intervertebral disc
3. Pedicle
4. Rib

Lumbar spine



1. Vertebral body
2. Transverse process
3. Pedicle
4. Spinous process
5. Sacrum





1. Vertebral body L3
2. Intrvertebral disc
3. Spinous process
4. Neural foramen
5. Sacrum

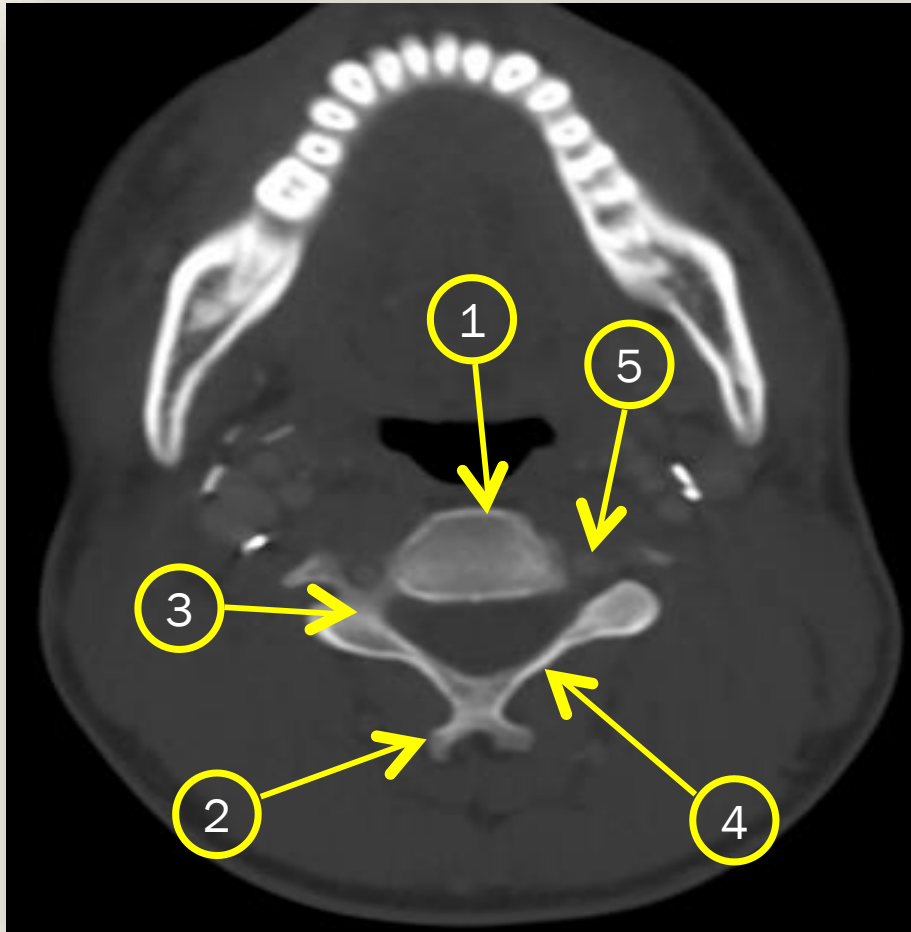




CT scan

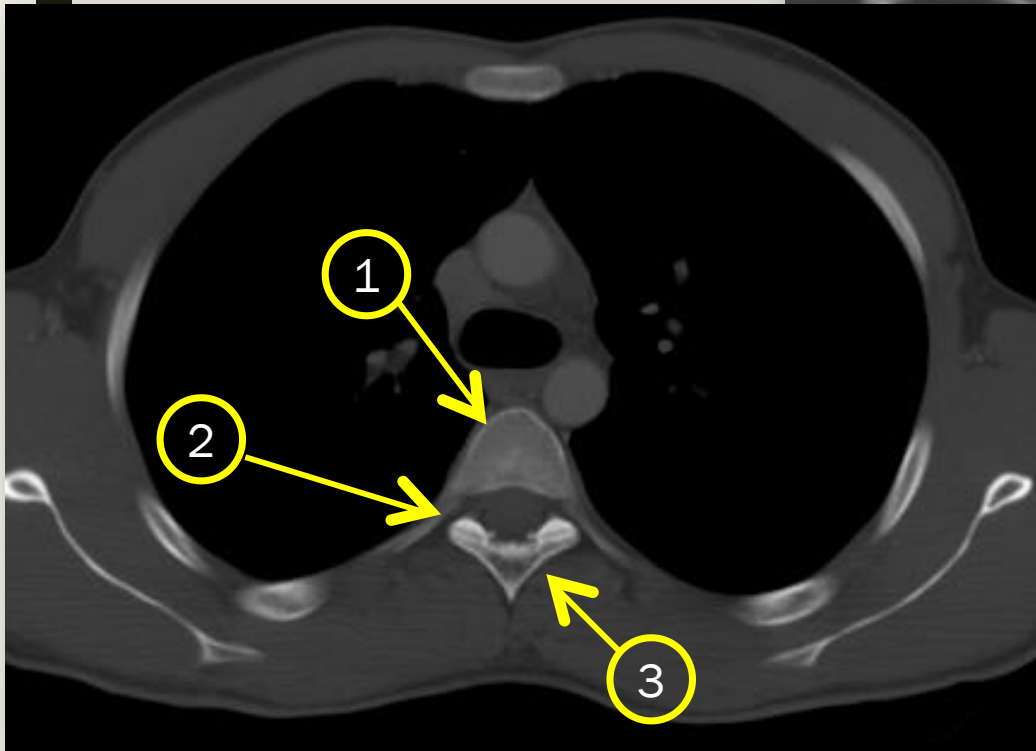
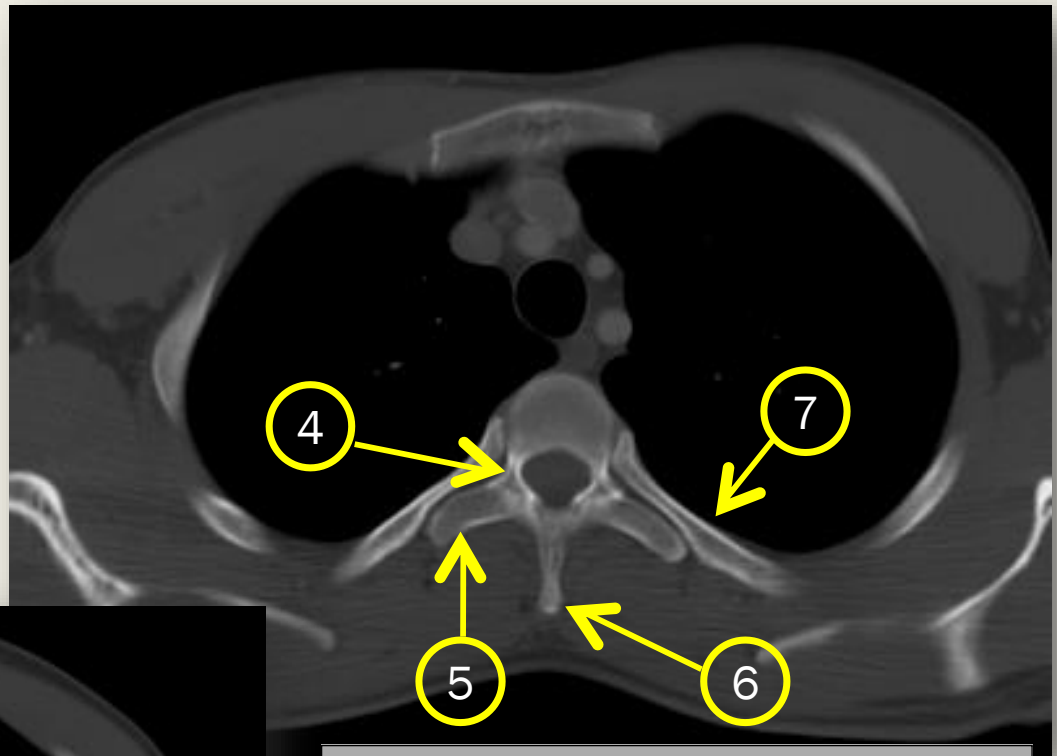
Cervical spine

Cervical spine



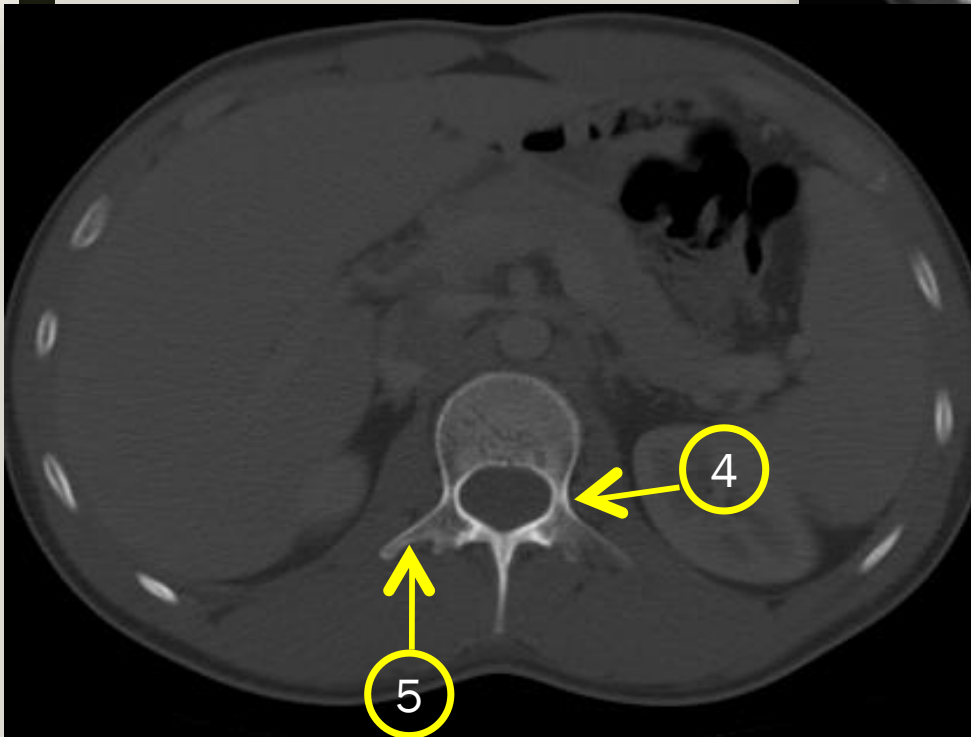
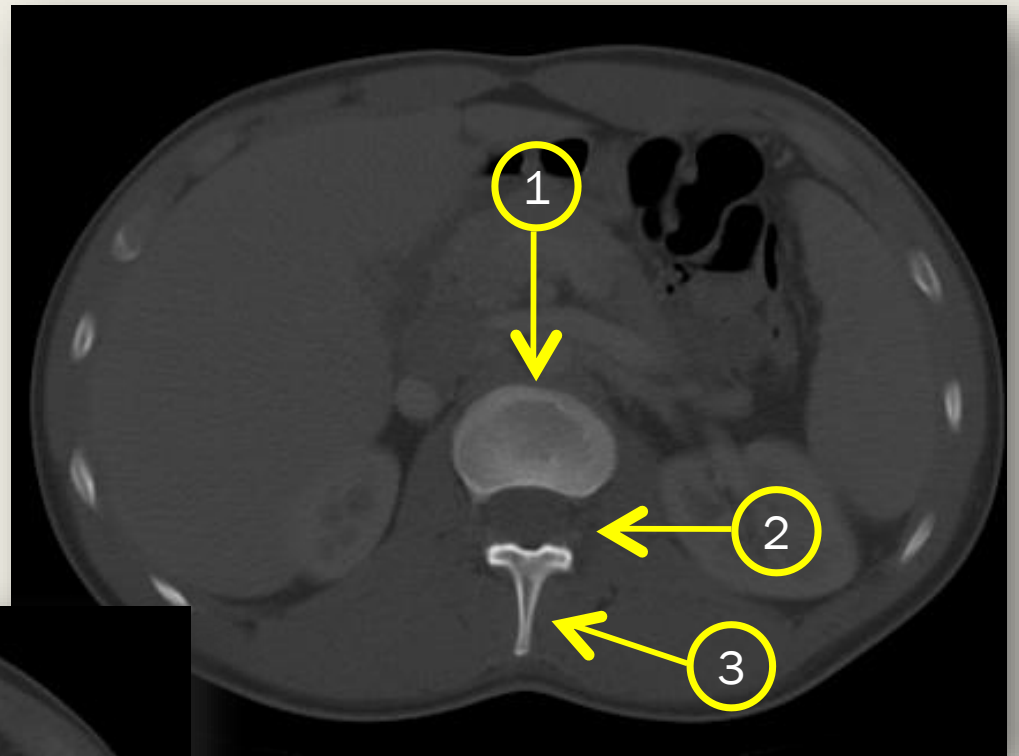
1. Vertebral body
2. Spinous process
3. Pedicle
4. Lamina
5. Transverse foramen

Thoracic spine



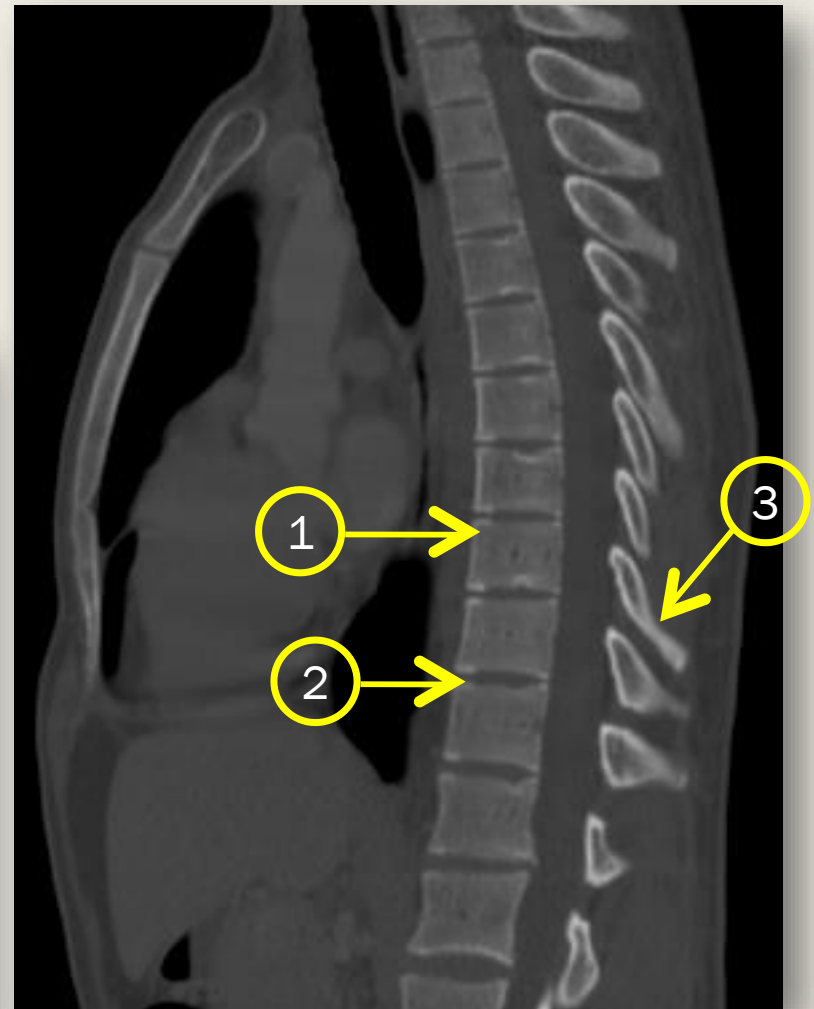
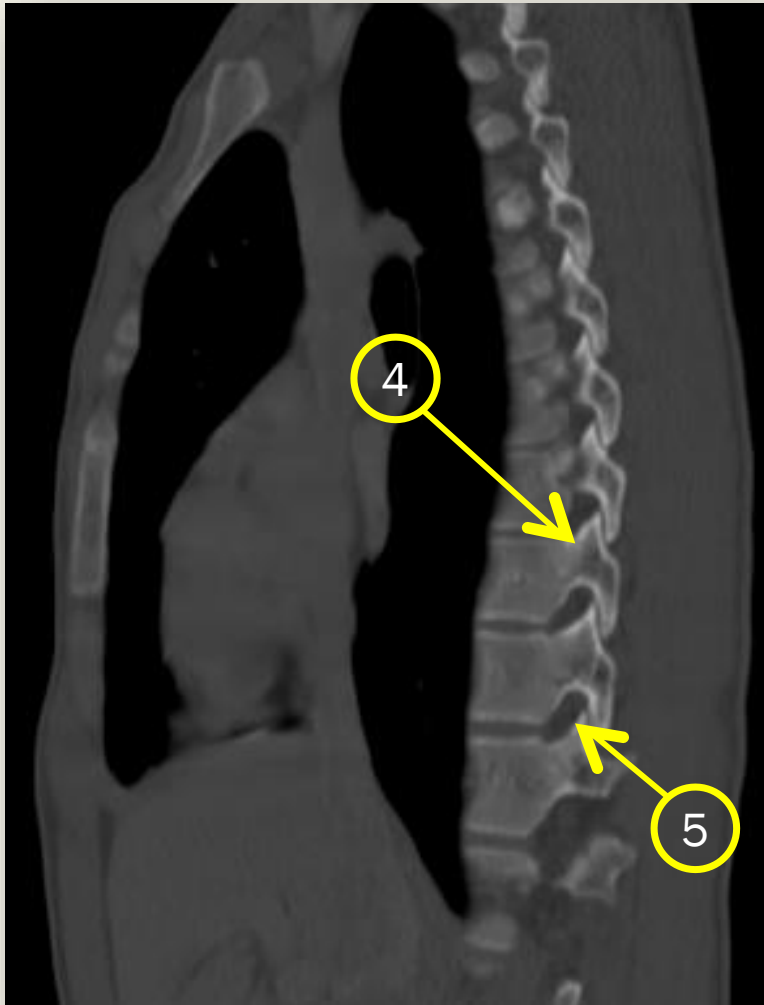
1. Vertebral body
2. Neural foramen
3. Lamina
4. Pedicle
5. Transverse process
6. Spinous process
7. Rib

Lumbar spine



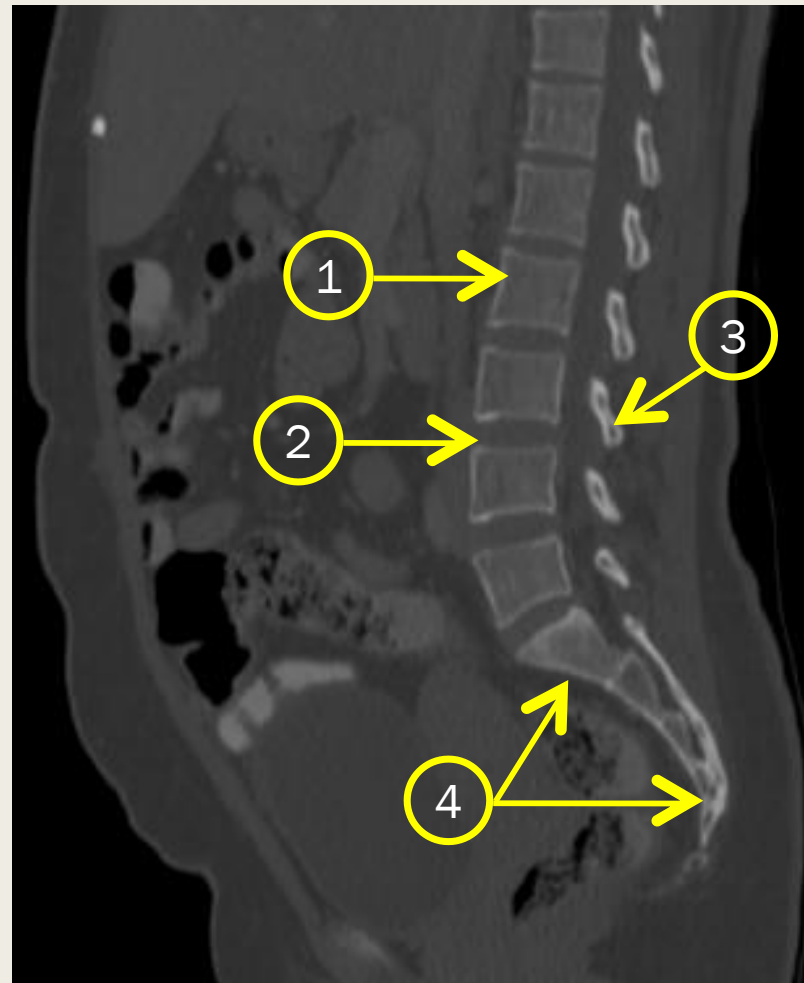
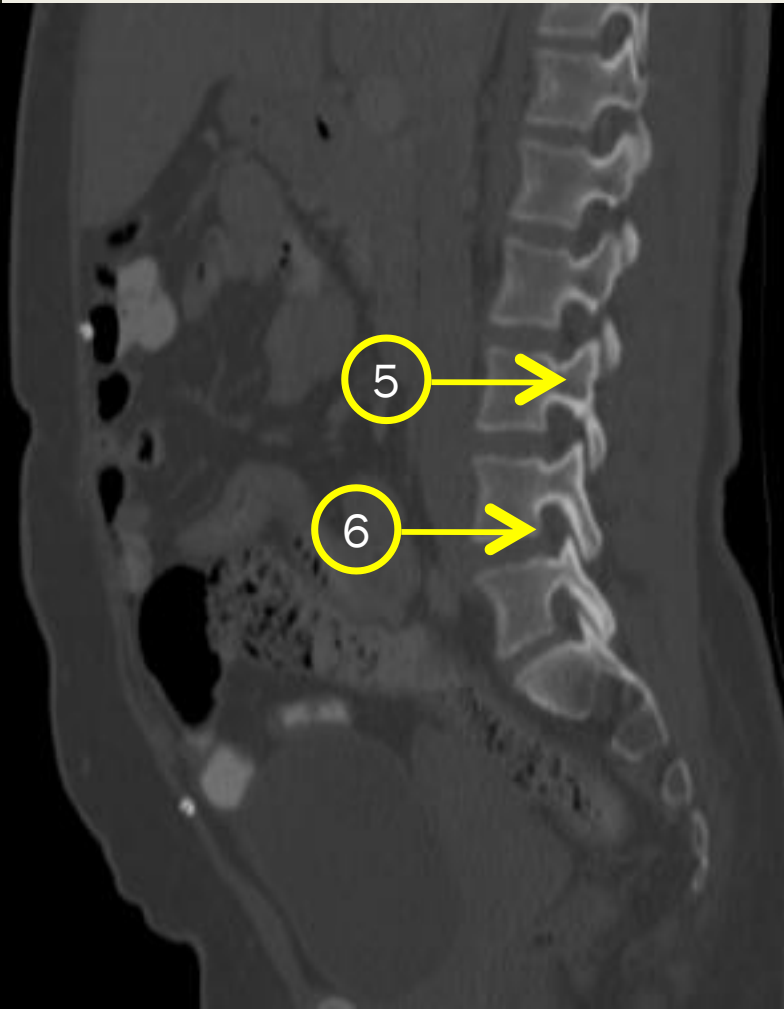
1. Vertebral body
2. Neural foramen
3. Spinous process
4. Pedicle
5. Transverse process

Dorsal spine



1. Vertebral body
2. Intervertebral disc
3. Spinous process
4. Pedicle
5. Neural foramen

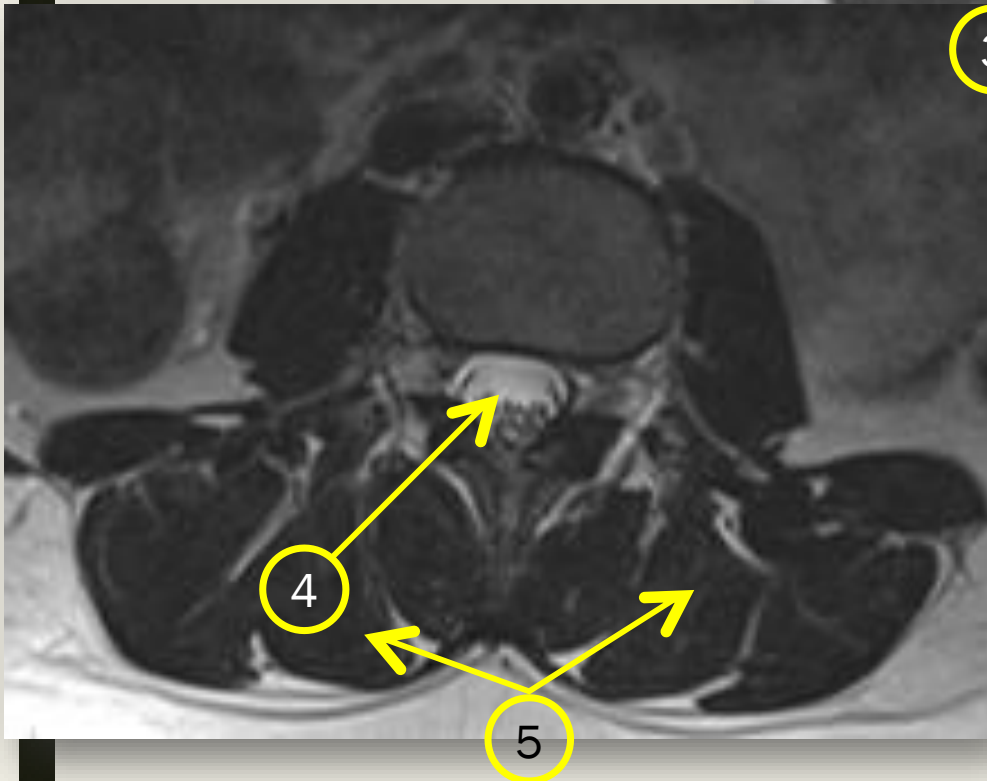
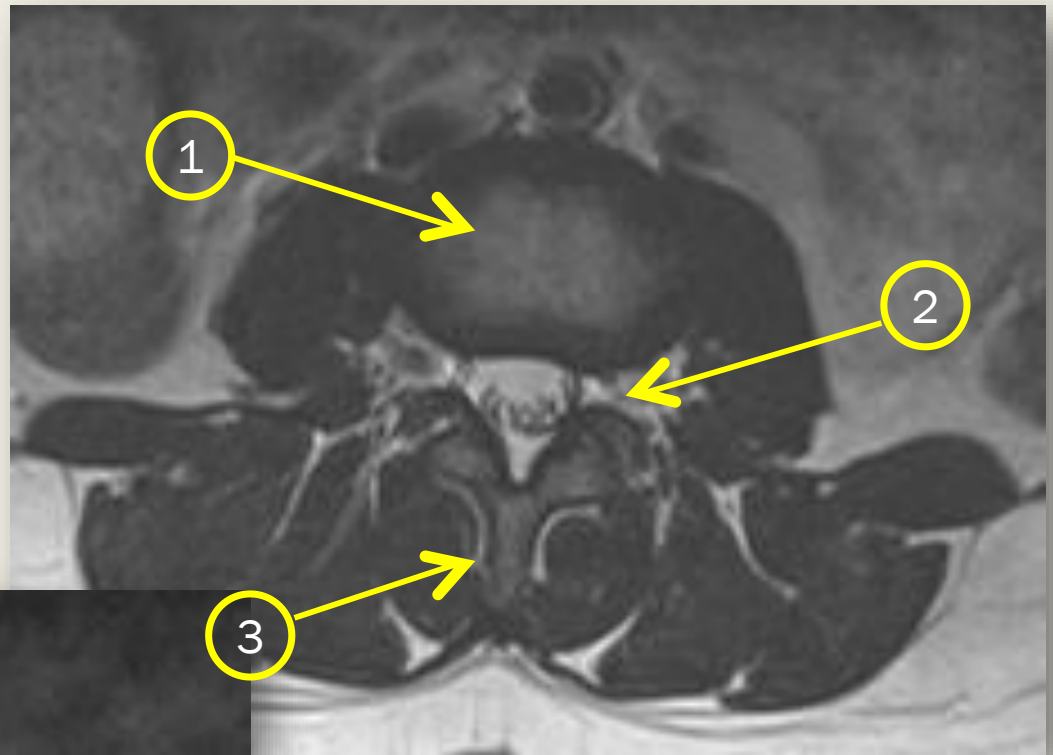
Lumbosacral spine



1. Vertebral body
2. Intervertebral disc
3. Spinous process
4. Sacrum
5. Pedicle
6. Neural foramen

MRI

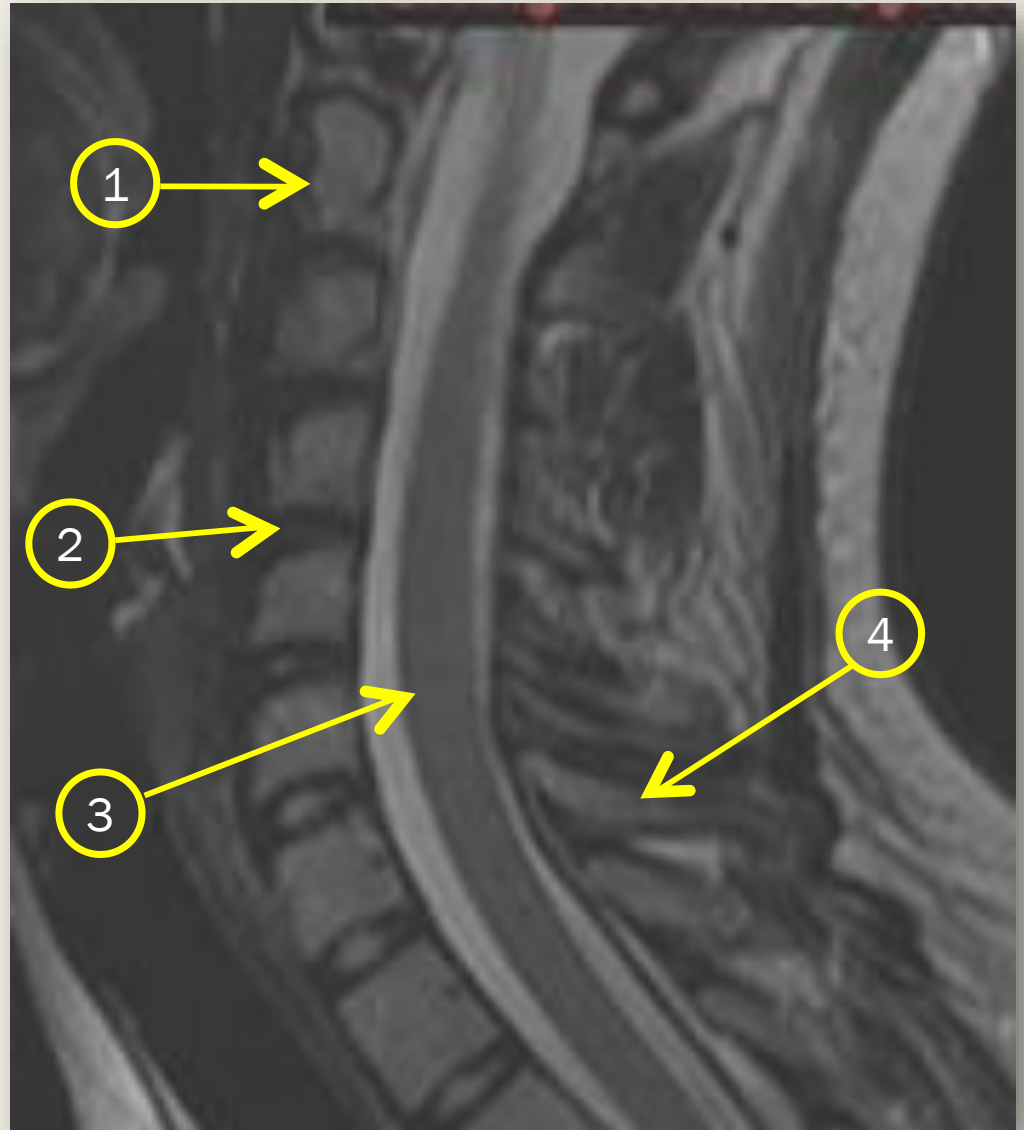
Lumbar spine



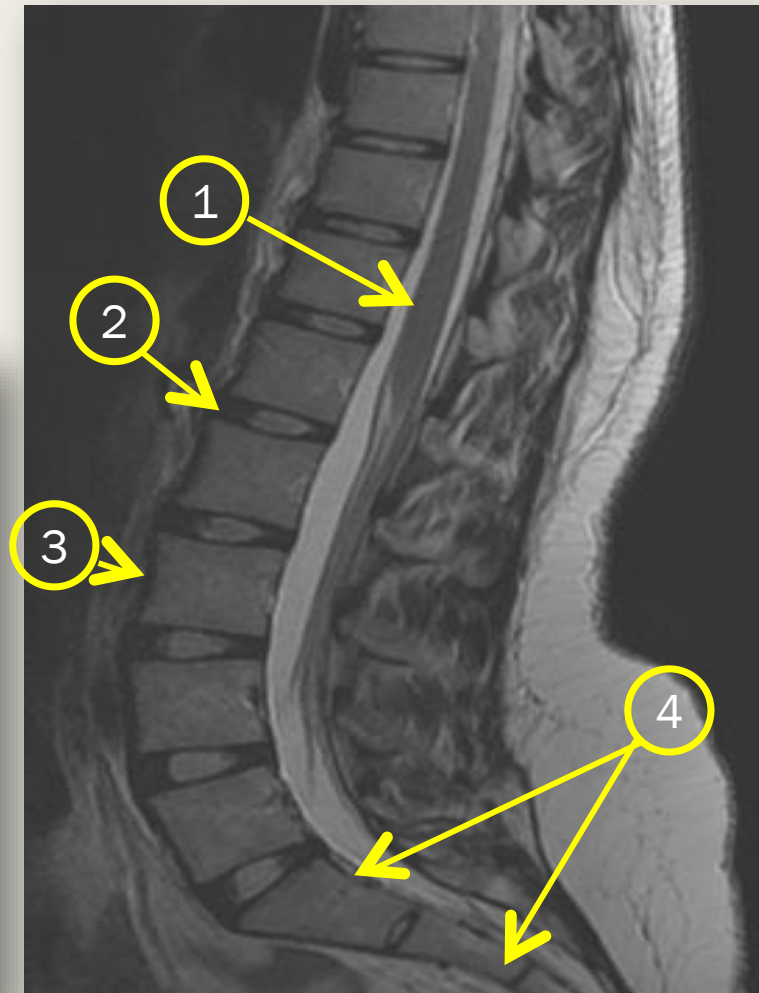
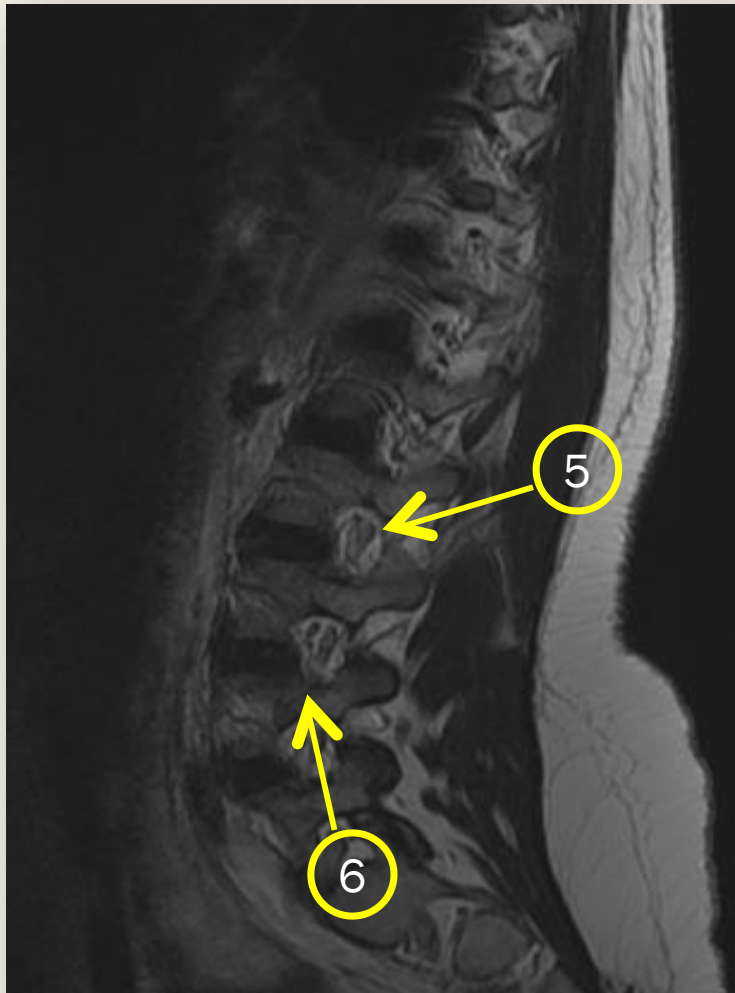
1. Vertebral body
2. Neural foramen
3. Spinous process
4. Thecal sac
5. Para-spinal muscles

Cervical spine

1. C2
2. Disc
3. Spinal cord
4. Spinous process



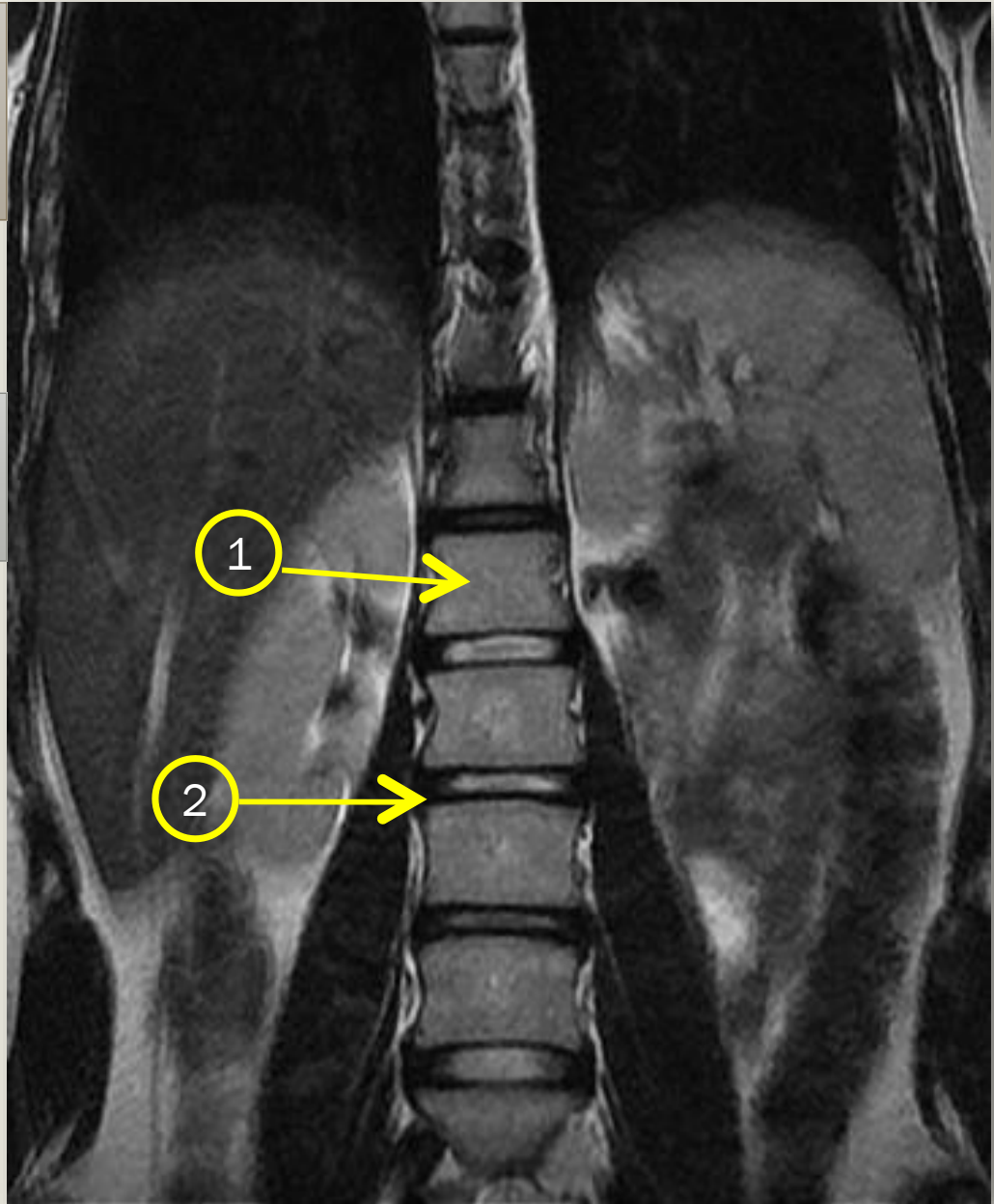
Lumbosacral spine



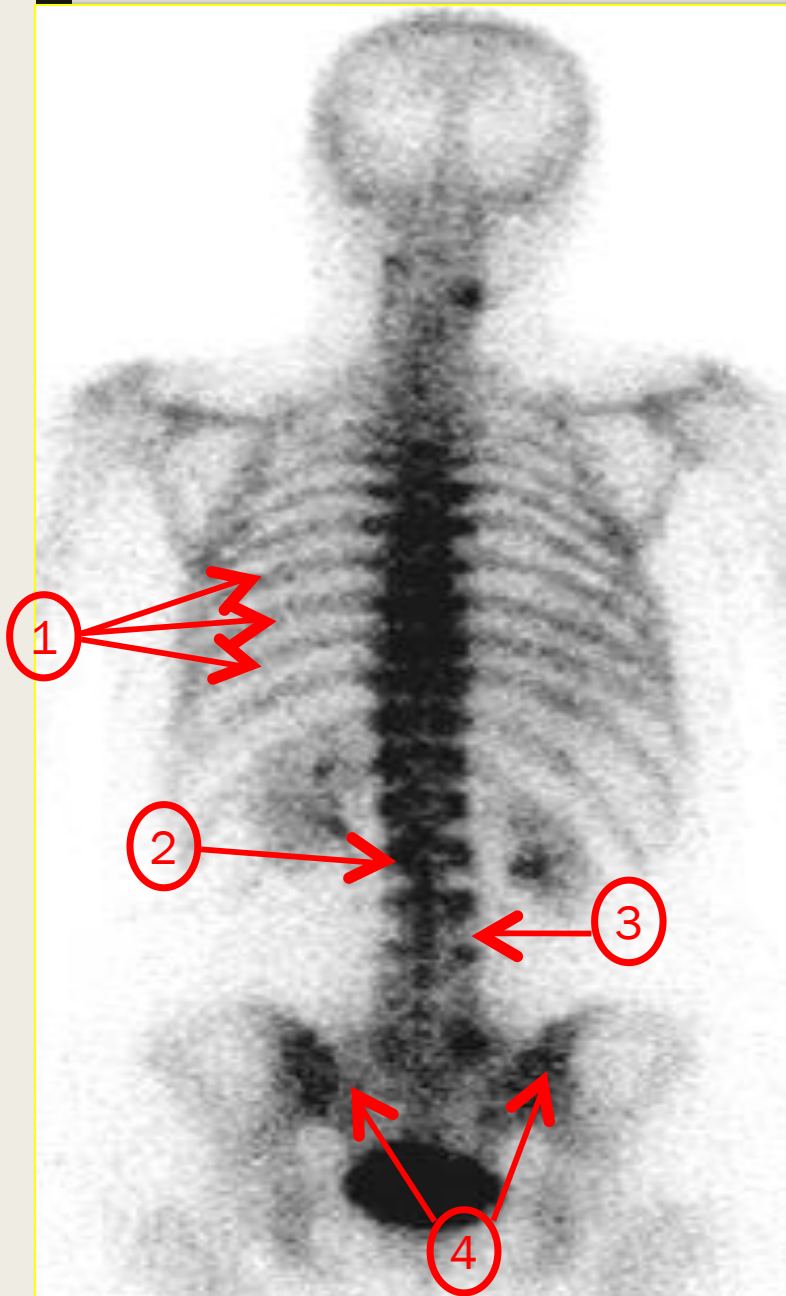
1. Spinal cord
2. Disc
3. Vertebral body
4. Sacrum
5. Neural foramen
6. Pedicle

Lumbar spine

1. Vertebral body
2. disc

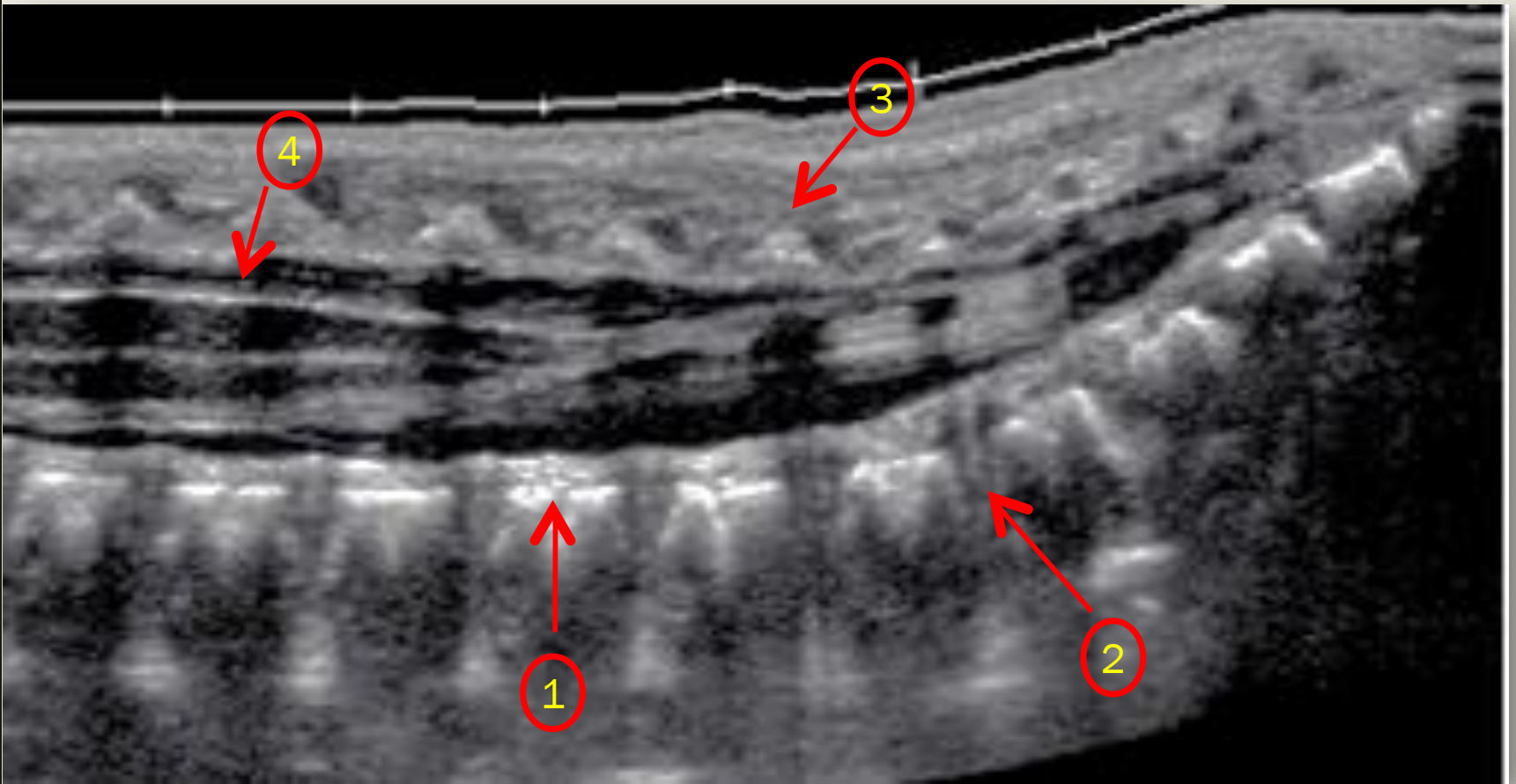


Nuclear scan



1. Ribs
2. Vertebral body
3. Disc
4. sacrum

ULTRASOUND



1. Vertebral body
2. Disc
3. Spinous process
4. Spinal cord

THE END