



Vessels and Nerves of the lower limb

Musculoskeletal Block



Anatomy Practical team - Med 439

Notes

the information in this file is based on the things that was given during practical sessions along with doctors' notes

To ensure your grade on each question :

- 1-Make sure your SPELLING is correct
- 2-Make sure you write the FULL name or location of the object precisely



Nerves

Nerves of the lower limbs



```
graph TD; A[Nerves of the lower limbs] --> B[Femoral Nerve]; A --> C[Sciatic Nerve]; A --> D[Obturator Nerve]; B --> E[Saphenous]; B --> F["N. To V. Medialis"]; C --> G[Tibial]; C --> H[Common peroneal];
```

The diagram is a hierarchical flowchart. At the top is a dark yellow rounded rectangle containing the text 'Nerves of the lower limbs'. A vertical arrow points down from this box to a horizontal line. From this horizontal line, three vertical lines descend to three separate white rounded rectangles: 'Femoral Nerve' on the left, 'Sciatic Nerve' in the center, and 'Obturator Nerve' on the right. From the bottom of the 'Femoral Nerve' box, two diagonal lines lead to two smaller white rounded rectangles: 'Saphenous' on the left and 'N. To V. Medialis' on the right. From the bottom of the 'Sciatic Nerve' box, two diagonal lines lead to two smaller white rounded rectangles: 'Tibial' on the left and 'Common peroneal' on the right. The 'Obturator Nerve' box has no further sub-nodes. The background features yellow brushstroke-like textures on the left and right sides.

Femoral Nerve

Saphenous

N. To V.
Medialis

Sciatic Nerve

Tibial

Common
peroneal

Obturator
Nerve

Sciatic Nerve

Roots

L4, L5, S1, S2, S3

Innervation

- 1-Posterior Compartment:
 - Hamstring part of Adductor Magnus
 - Biceps Femoris
 - Semitendinosus
 - Semimembranosus
- 2-All muscle below the knee (leg,foot)

It will pass below piriformis



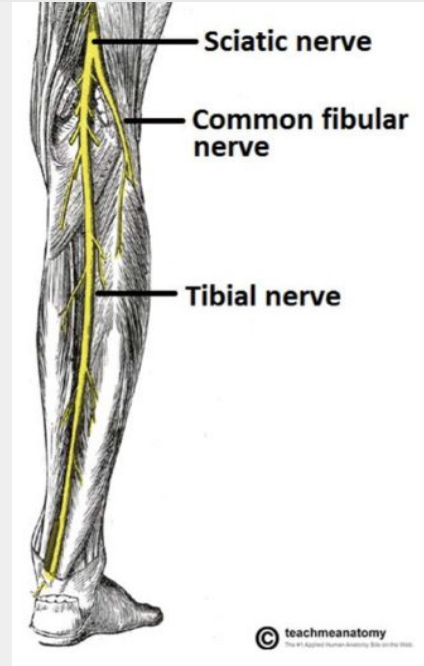
*In general we can say that the posterior compartment and the muscles below the knee are supplied by the sciatic nerve; but they are actually supplied by the tibial, fibular, and sural branches of the sciatic nerve

Tibial Nerve

Origin

Is a portion of the sciatic

- Innervation
- muscles of posterior compartment of leg
 - Intrinsic muscles of sole
 - ONE inverter of the foot (tibialis posterior)



Common peroneal nerve



Not that important

Femoral Nerve

From medial to lateral: VAN
(Femoral Vein, Artery, and Nerve)

Roots

L2, L3, L4

Anterior Compartment:

- Quadriceps femoris
(Rectus femoris, Vastus intermedius, Vastus medialis, Vastus lateralis)
- Sartorius, -Pectineus ,
- Iliacus not psoas major

Saphenous Nerve (Longest Cutaneous nerve of the Body)

Nerve to Vastus Medialis (Short branch of femoral nerve)

Enters vastus medialis muscle and finishes there through the adductor canal and leaves it from the upper third



Innervation

Branches

The word "Arteries" is written in a white, sans-serif font, centered within a white rectangular border. This border is superimposed on a background of three horizontal, overlapping brushstrokes in shades of orange and yellow, set against a light gray background.

Arteries

Arteris

Femoral Artery

Anteriorly of the thigh

Popliteal Artery

posteriorly of the thigh

Dorsalis pedis Artery

Common iliac artery

Posterior tibial Artery

Anterior tibial Artery

External iliac Artery

Internal iliac Artery

Femoral Artery

It is the continuation of the **External Iliac** artery

Is the main arterial supply to the lower limb

Between **femoral nerve laterally** and **femoral vein medially**

supplies : lower abdominal, thigh, External genitalia



From medial to lateral:
VAN
(Femoral Vein, Artery, and Nerve)

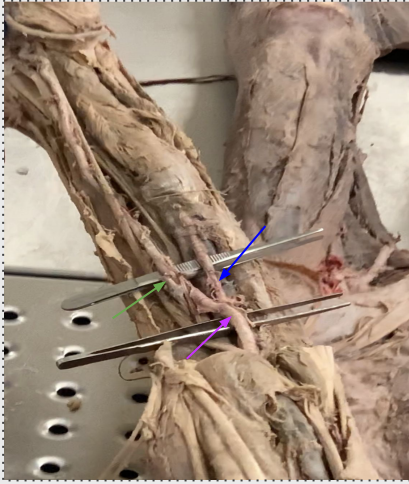
Popliteal Artery

The continuation of the femoral artery.

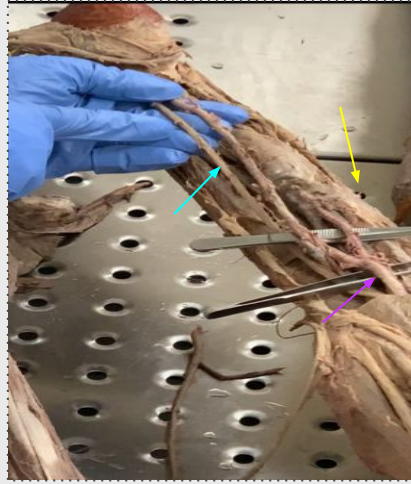
The lower border of popliteal muscle

When you see any artery in the posterior compartment of the thigh that is **POPLITEAL ARTERY**





* Popliteal Artery
* Posterior tibial Artery
* Anterior tibial Artery



* Popliteal Artery
* Posterior tibial Artery
* Posterior tibial Nerve



Dorsalis pedis
Artery



Common iliac
Artery



External iliac
Artery

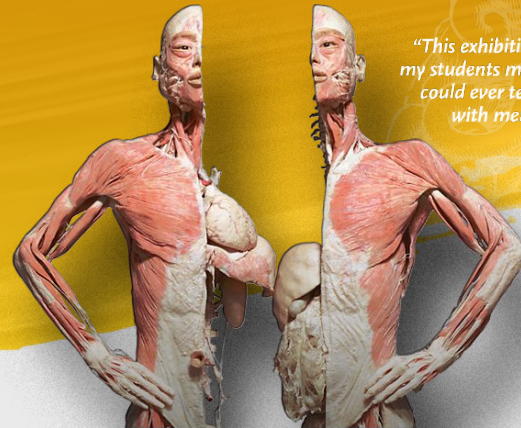
Don't stop until you are proud.

Team Members:

- Duaa Alhumoudi
- Mona Alomiriny
- Rania Almutiri
- Taif Almotiri
- Nourah Alklaib
- Arwa Alqahtani
- Norah Alasheikh
- Sara Alharbi
- Najd Alzahrani
- Mishal Althunayan
- Omar alhalabi
- Khalid Alosaimii
- Hadi Alhemi
- Nasser Alohal

Team Leaders:

- Renad Alhomaidi
- Bassam Alasmari



"This exhibition taught my students more than I could ever teach them with mere words."