



MED439

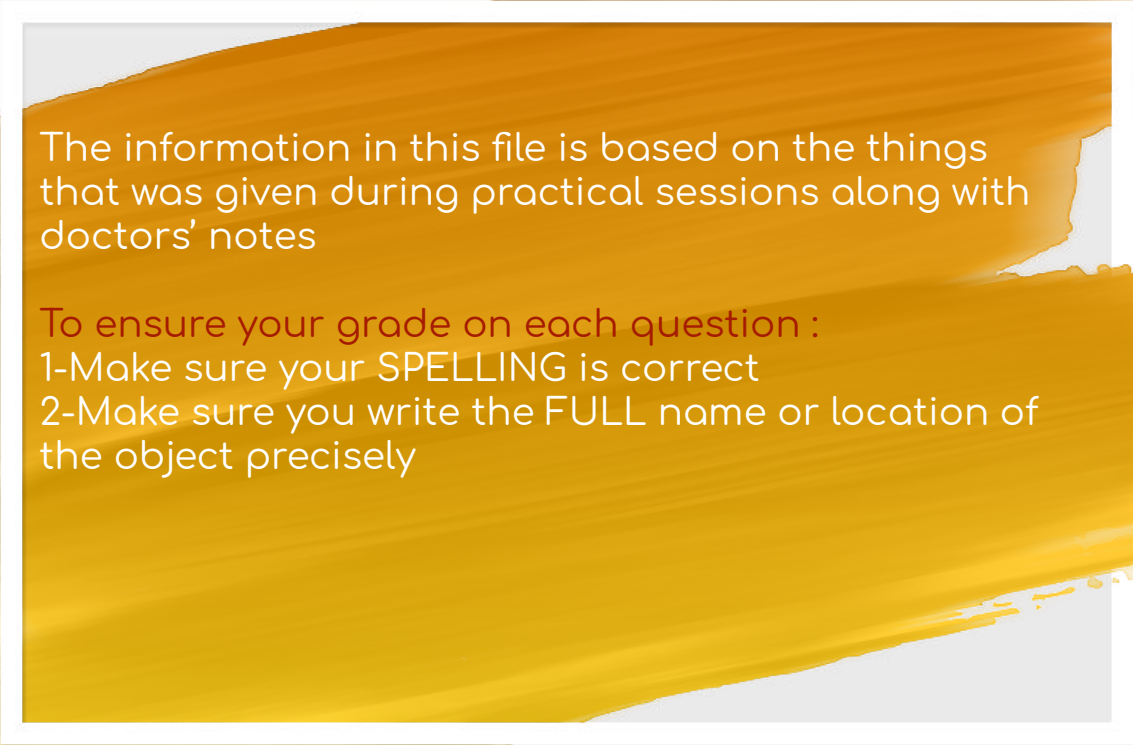


lung & Pleura

Respiratory Block



Anatomy Practical Team - Med 439



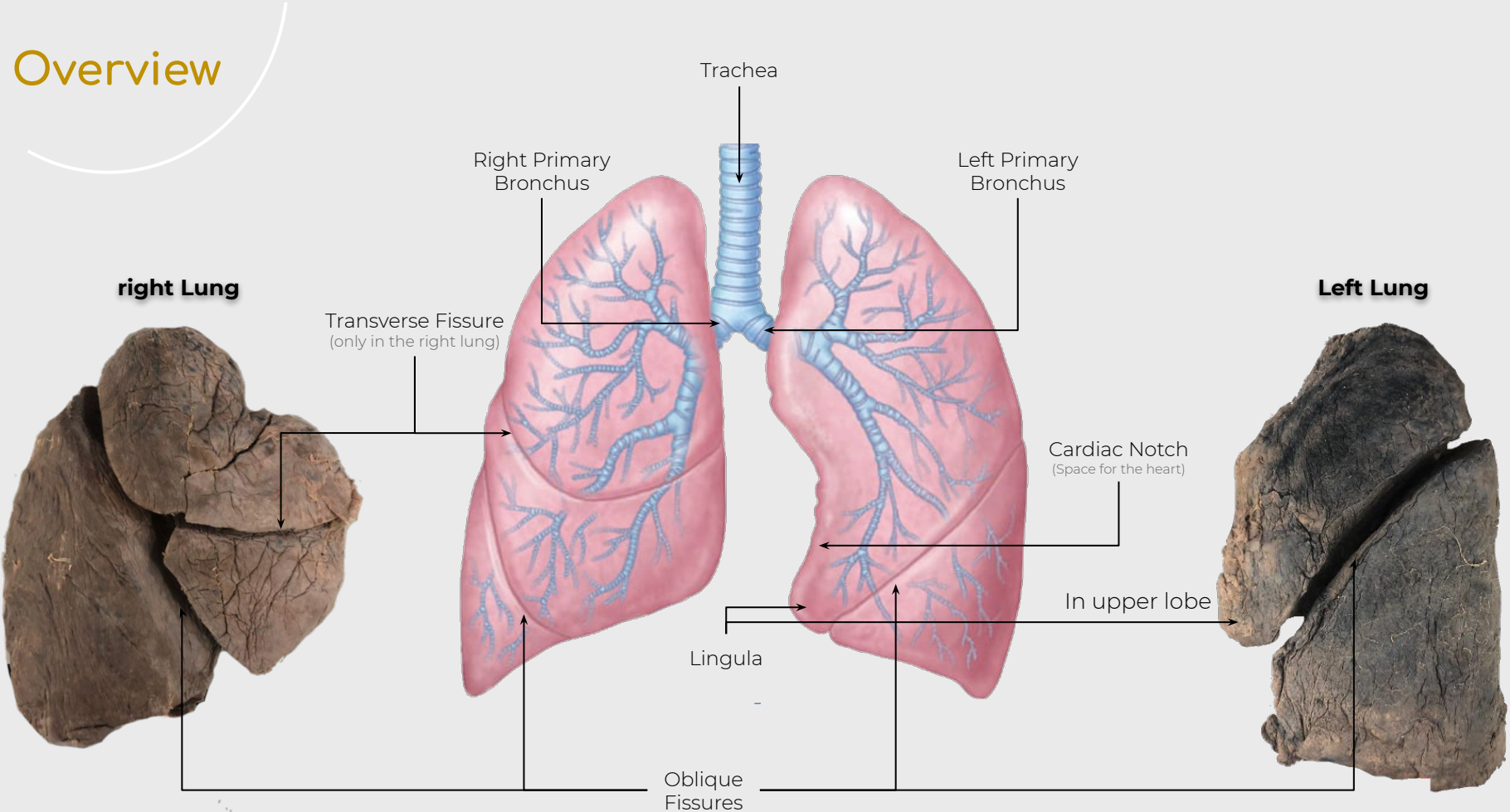
The information in this file is based on the things that was given during practical sessions along with doctors' notes

To ensure your grade on each question :

1-Make sure your SPELLING is correct

2-Make sure you write the FULL name or location of the object precisely

Overview



How to Answer Properly

1- Start with identifying the side.

- Check the number of lobes.

If it has 3 lobes then it is the right lung, however if it has 2 lobes only then it is the left lung.

- Observe for cardiac notch and lingula.

Cardiac notch allows some space for the heart and it's only seen in the left lung. As is lingula

- Observe for transverse / horizontal fissure.

Transverse is only found in the right lung, while oblique fissure is found in both

- Check the direction of the anterior and posterior borders and hilum.

Anterior border is sharp, posterior border is broad and smooth, hilum should be medial.

2- After you've identified the side, bear in mind that:

- If it's the **Right** lung, you will find openings of: **2 bronchus, 1 artery, 2 veins.**
- If it's the **Left** lung, you will find openings of: **1 bronchus, 1 artery, 2 veins.**

3- Now you need to differentiate each opening.

- Openings for bronchus is cartilaginous (لمسها قاسي وناشف).
- Opening for the pulmonary artery is soft.

نفترض طلعت لكم الـ lung اليمين، اول شي المسوا وطلعوا الفتحات القاسية الـ bronchus وعددهم بيكون ٢، وبين فتحتين البرونكس هذي بتحصلون فتحة الـ artery محشور بينهم، اذا يا دفعة يا بظلة نستنتج أن الفتحتين الباقيات اللي تحت مرره ومن قدام مرره بتكون للـ vein.

الحين نفترض طلعت لكم الـ lung اليسار، نفس الشئ المسوا وطلعوا فتحة الـ bronchus القاسية، فوقها على طول بتحصلون فتحة الـ artery. والـ veins عادي بنفس مكانهم ماتغيروا.

borders

Anterior border



Inferior border



Posterior border



Anterior border is sharp, posterior border is broad and smooth

Surfaces

Costal surface



Right lung

Left lung

Medial surface



Right lung

Left lung

Posterior / vertebral part
Anterior / mediastinal part

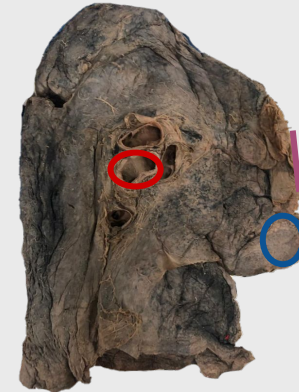
Differences between lungs

	Right lung	Left lung
lobes	Three lobes: superior, middle, inferior	Two lobes: superior, inferior
fissures	Oblique and horizontal	Oblique
Hilum difference	Two bronchus entering	One bronchus entering
other features	-	Lingula and cardiac notch

Right lung

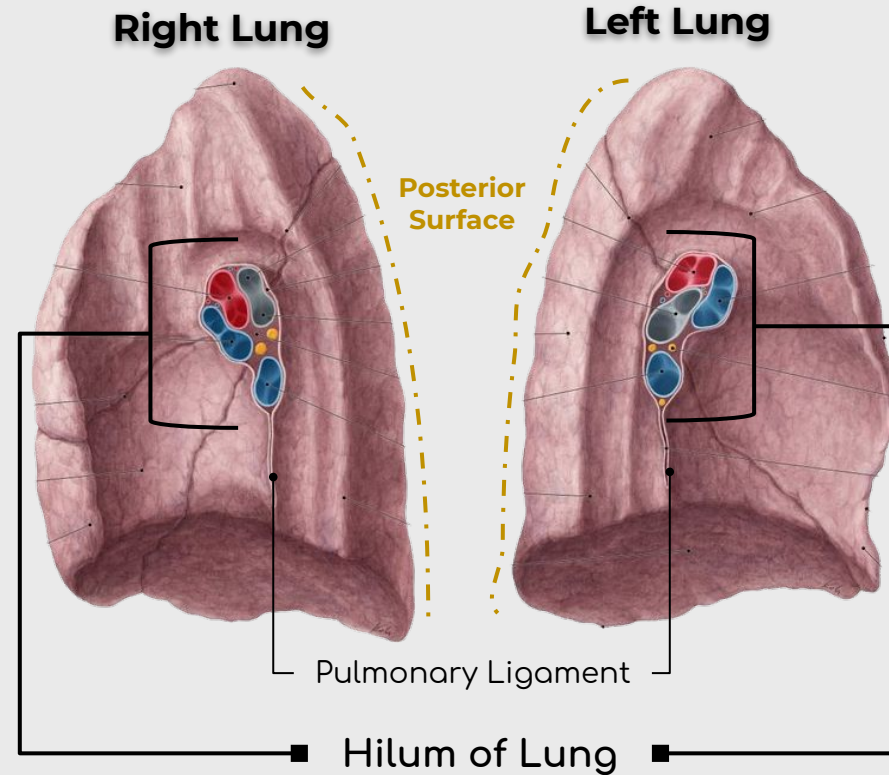


Left lung



Hilum of Lung

	Right Lung	Left Lung
Bronchus	2 openings <small>(it divides before entering the lung)</small> (Most Posterior)	1 opening <small>(it divides after entering the lung)</small> (Most Posterior)
Pulmonary Artery	1 opening Lies between the two bronchus openings	1 opening Lies superior to the bronchus opening
Pulmonary Vein	2 openings 1- Superior pulmonary vein (Most Anterior) 2- Inferior pulmonary vein (Most Inferior)	



- ★ Grey: Lobar Bronchus
- ★ Red: Pulmonary Artery
- ★ Blue: Pulmonary Vein

Bronchus

It is best to feel for the cartilage
on the borders of each hole to
find the bronchus

Right Lung



Left Lung



Superior & Inferior Pulmonary Vein

After distinguishing the bronchus,
the veins are found most anterior
and inferior to the bronchus

Right Lung



Left Lung



Pulmonary Artery

What is left is the
artery

Right Lung



Left Lung



Impressions

Right Lung



Cardiac impression of the right lung (Right atrium)

Left Lung



Cardiac impression of the left lung (Left ventricle)

Impressions

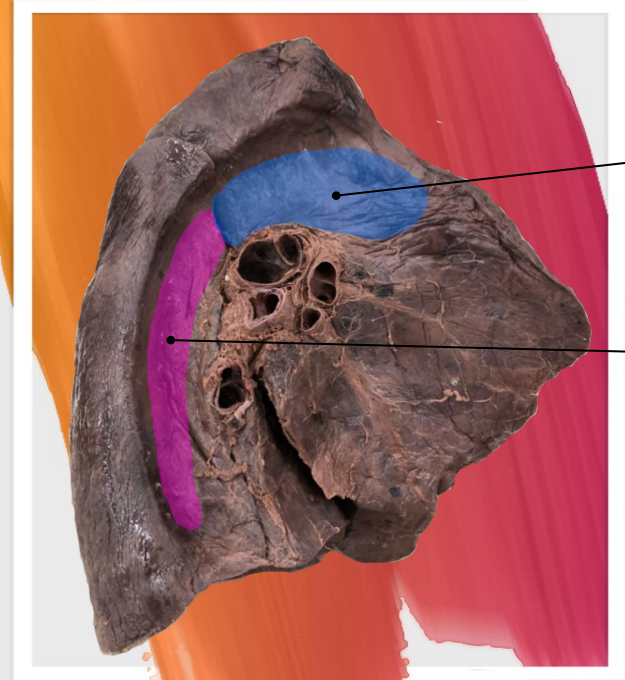
Right Lung



Arch of
Azygos

Azygos Vein

Left Lung



Arch of
Aorta

Descending
Thoracic
Aorta

Impressions

Right Lung



Trachea

Superior vena cava

Esophagus

Left subclavian artery

Inferior vena aorta cava

Left Lung



Left common carotid

Impressions

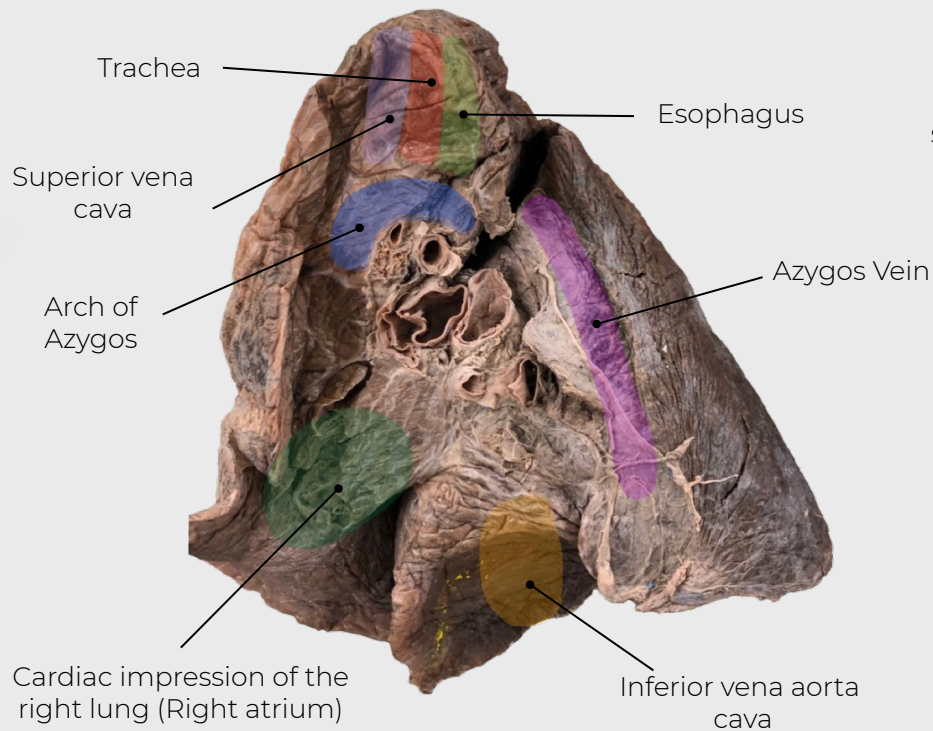


both
Lungs

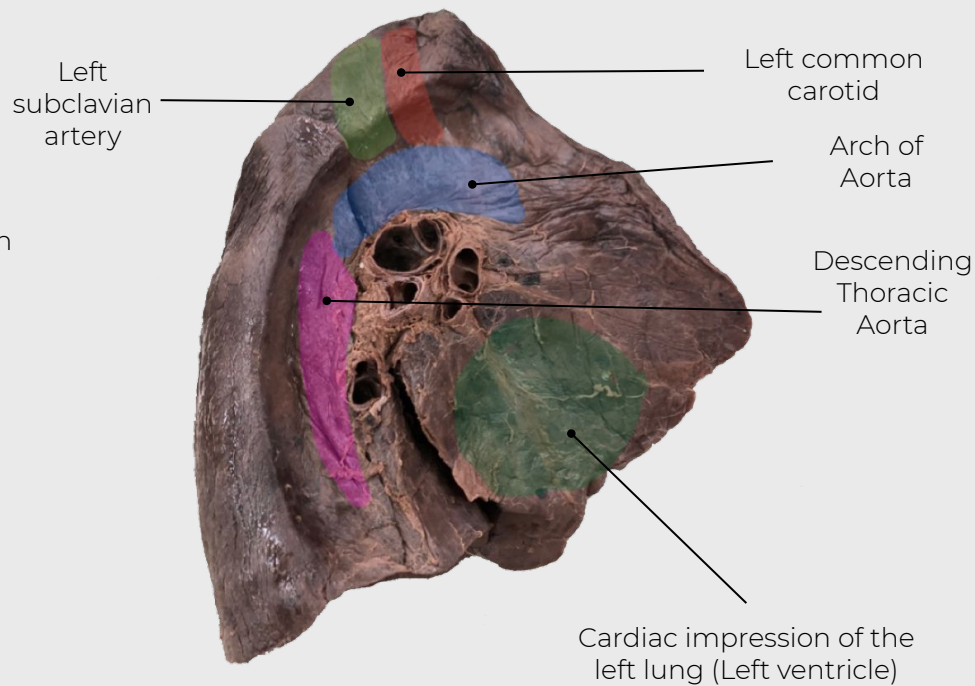
Diaphragm

I M P R E S S I O N S

Right Lung

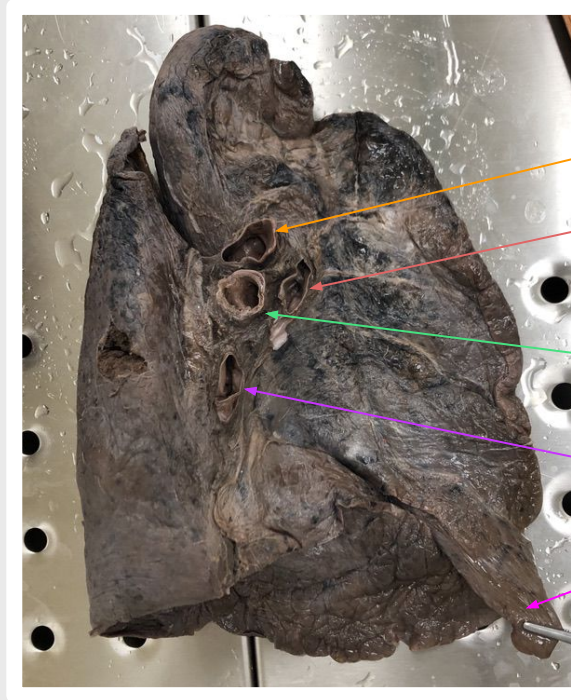


Left Lung



Quiz

- 1- Identify the side?
- 2- Identify A, B, C, D, E?



A: Pulmonary Artery
B: Superior Pulmonary Vein
C: Bronchus
D: Inferior Pulmonary Vein
E: Lingula

Left lung.

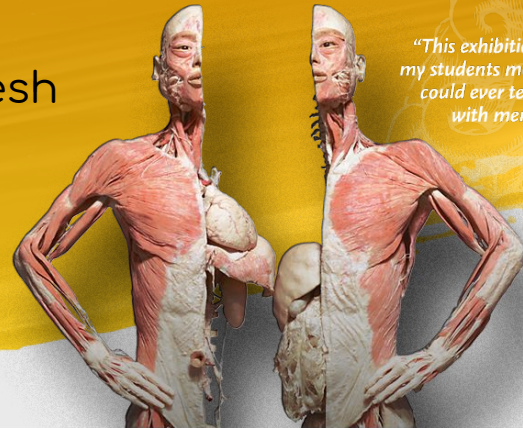
Don't stop until you are proud.

Team Members:

- Rania Almutiri
- Duaa Alhumoudi
- Nourah Alklaib
- Arwa Alqahtani
- Norah Alasheikh
- Najd Alzahrani
- Fatimah alhelal
- Samar almohammedi
- Khalid Alosaimii
- Hadi Alhemsii
- Abdulrahman addweesh
- Abdulmalik Mokhtar

Team Leaders:

- Renad Alhomaidi
- Bassam Alasmari



"This exhibition taught my students more than I could ever teach them with mere words."