

Muscle adaptation to exercise



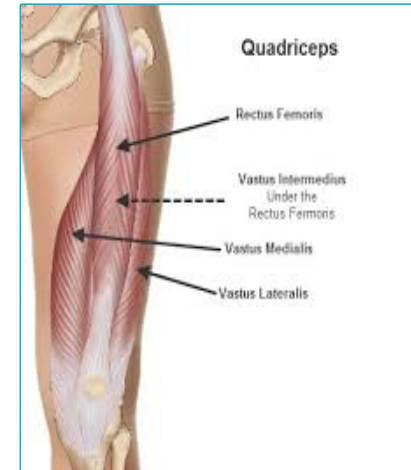
Dr. Aida Korish
Assoc.Prof.Physiology
KSU

Objective

- ▶ Define strength, power, and endurance of muscles.
- ▶ Analyze the effect of athletic training on muscle structure and muscle performance.
- ▶ Discuss the mechanism of muscle hypertrophy.
- ▶ Contrast Fast-twitch and Slow-twitch muscle fibers.
- ▶ Explain the respiratory changes in exercise (Oxygen consumption, pulmonary ventilation and VO_2 max).
- ▶ Identify the cardiovascular changes in exercise (Work output, cardiac output, heart hypertrophy).
- ▶ Interpret the role of stroke volume and heart rate in increasing the cardiac output.
- ▶ Explain the body heat changes in exercise and the heatstroke.

Strength, Power, and Endurance of Muscles

- ▶ **Muscles strength**: Refers to the amount of force (push or pull) a muscle can produce against resistance in a single maximal effort.
- ▶ Size of the muscle influences the maximal contractile force. Normally 3-4 kg/cm² of the cross section of the muscle e.g . The cross-sectional area of quadriceps in a world class weight lifter is 150 cm² causes maximal contractile strength of 525 kilograms. e.g weight lifting, digging,
- ▶ **Mechanical work of muscle (W)**:
= The force applied by the muscle (L) x The distance over which the force is applied (D).
it is expressed in (kg-m). $W = L \times D$



Cont... Strength, Power, and Endurance of Muscles

- ▶ **Muscles Power:** The amount of work the muscle performs in a period of time.
- ▶ It is expressed in (kg-m/min).

The maximal power achievable by all muscles in the body of a highly trained athlete working together is approximately the following:

	kg-m/min
First 8 to 10 seconds	7000
Next 1 minute	4000
Next 30 minutes	1700



Cont... Strength, Power, and Endurance of Muscles

- ▶ **Muscle's Endurance:** The ability of the muscle to sustain repeated contractions against a resistance for a period of time.
- ▶ It depends on the glycogen stored in the muscle before the exercise. Therefore, endurance is enhanced by a high-carbohydrate diet.
- ▶ **Static endurance:** is the muscle's ability to remain contracted for a long period.
- ▶ **Dynamic endurance:** is defined as the muscle's ability to contract and relax repeatedly.



Effect of Training on Muscle structure and Muscle Performance

Maximal Resistance Training:

Muscles that function under no load, even if they are exercised for hours on end, increase little in strength.

At the other extreme, muscles that contract at more than 50 % maximal force of contraction will develop strength rapidly even if the contractions are performed only a few times each day

e.g 6 maximal muscle contractions /3 times daily/3 days/ a week give approximately optimal increase in muscle strength, without producing chronic muscle fatigue.

However Multiple weeks of increased muscles function under no load will cause little increase in strength.



Approximate effect of optimal resistive exercise training on increase in muscle strength over a training period of 10 weeks.

Muscle Hypertrophy

- ▶ Is the increase of the total mass of a muscle . Hypertrophy occurs to a much greater extent when the muscle is loaded during the contractile process.
- ▶ With training muscles hypertrophied 30-60 % due to increased diameter of the muscle fibers with some increase in number of fibers.
- ▶ **Changes in the hypertrophied muscle fiber:**
- ▶ **↑** the actin and myosin filaments numbers.
- ▶ **↑**120 % in mitochondrial enzymes.
- ▶ **↑** ATP **↑** and phosphocreatine,50% in stored glycogen.
- ▶ **↑**15 -100 % in stored triglycerides.
- ▶ Increased **↑** both the aerobic & anaerobic metabolisms
- ▶ **↑**The efficiency of the oxidative metabolic system increases by 45 %.



Fast-Twitch and Slow-Twitch Muscle Fibers

Fast-twitch fibers: Achieves maximal power in very short periods of time. Adapted for forceful and rapid contraction. e.g. gastrocnemius muscle used for jumping. (anaerobic metabolism)

Slow-twitch fibers: Provide endurance, prolonged strength of contraction minutes to hours. Is organized for generation of aerobic energy. e.g. of Slow-twitch muscle adapted for prolonged muscle activity is soleus muscle in the lower leg used for standing. (aerobic metabolism)

In summary, fast-twitch fibers can deliver extreme amounts of power for a few seconds to a minute or so. Conversely, slow-twitch fibers provide endurance, delivering prolonged strength of contraction over many minutes to hours.

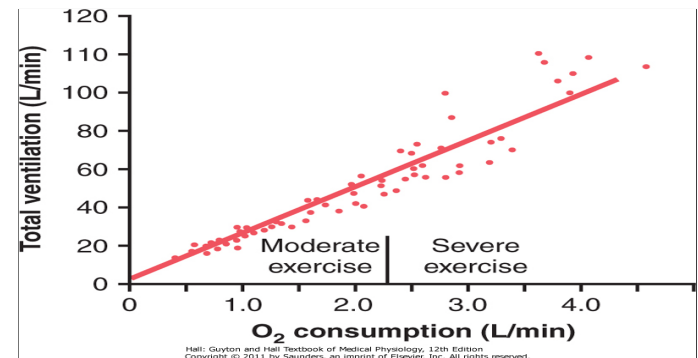
* differences between the fast-twitch and the slow-twitch fibers Read [Guyton & Hall: Textbook of Medical Physiology 13E Unit XV chapter 85 page 1090](#)

Respiration In Exercise

- ▶ Oxygen Consumption (VO_2) and Pulmonary Ventilation (VE) in Exercise
- ▶ VO_2 at rest is about 250 ml/min. **However** at Maximal efforts can be as follows:

	ml/min
Untrained average male	3600
Athletically trained average male	4000
Male marathon runner	5100

VO_2 and VE increase about 20-fold between the resting state and maximal intensity

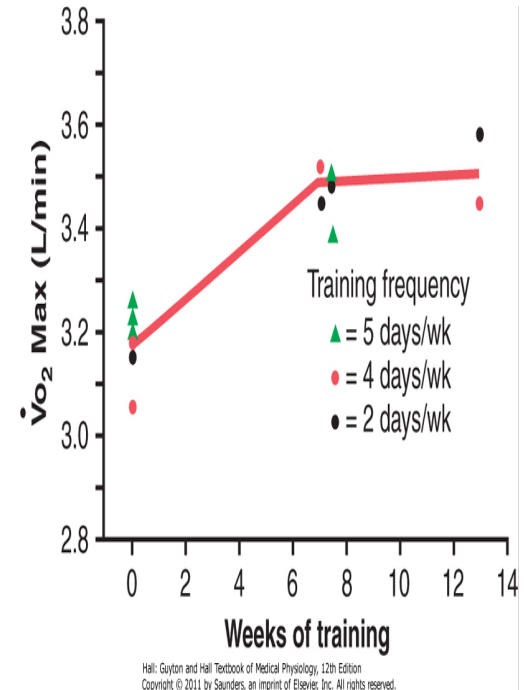


Effect of exercise on oxygen consumption and ventilatory rate.)

Effect of Training on VO2 Max

- ▶ **VO2 Max:** The rate of oxygen usage under maximal aerobic metabolism is VO2 Max.
 - ▶ In the below study VO2 Max increased only about 10% by training.
- other factors that increase the VO2 Max
- ❓ chest sizes in relation to body size
 - ❓ the power of respiratory muscles contraction

Guyton & Hall12E Unit XV chapter 85 page 1090-91



Increase in Vo2 Max over a period of 7 to 13 weeks of athletic training.

Cardiovascular System in Exercise

- ▶ Work Output, Oxygen Consumption, and Cardiac Output (C.O.P) during exercise are directly related to one another.
- ▶ Increased Muscle work will ↑ oxygen consumption → dilates the muscle blood vessels, thus ↑ venous return and C.O.P .
- ▶ **Effect of Training on Heart Hypertrophy and C.O.P:**
- ▶ Training increases C.O.P about 40 % than in untrained persons.
- ▶ Heart chambers of marathoners enlarge (dilate) about 40% in contrast to non trained.
- ▶ Heart size of the marathoner is larger than normal person.
- ▶ [Guyton & Hall: Textbook of Medical Physiology 13E: 1092-94](#)

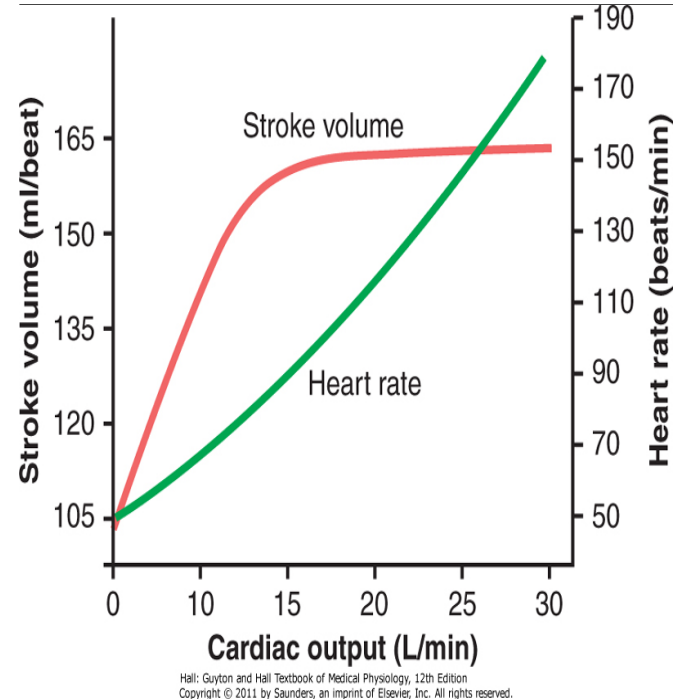


Comparison of Cardiac Function
Between Marathoner and Nonathlete

	Stroke Volume (ml)	Heart Rate (beats/min)
Resting		
Nonathlete	75	75
Marathoner	105	50
Maximum		
Nonathlete	110	195
Marathoner	162	185

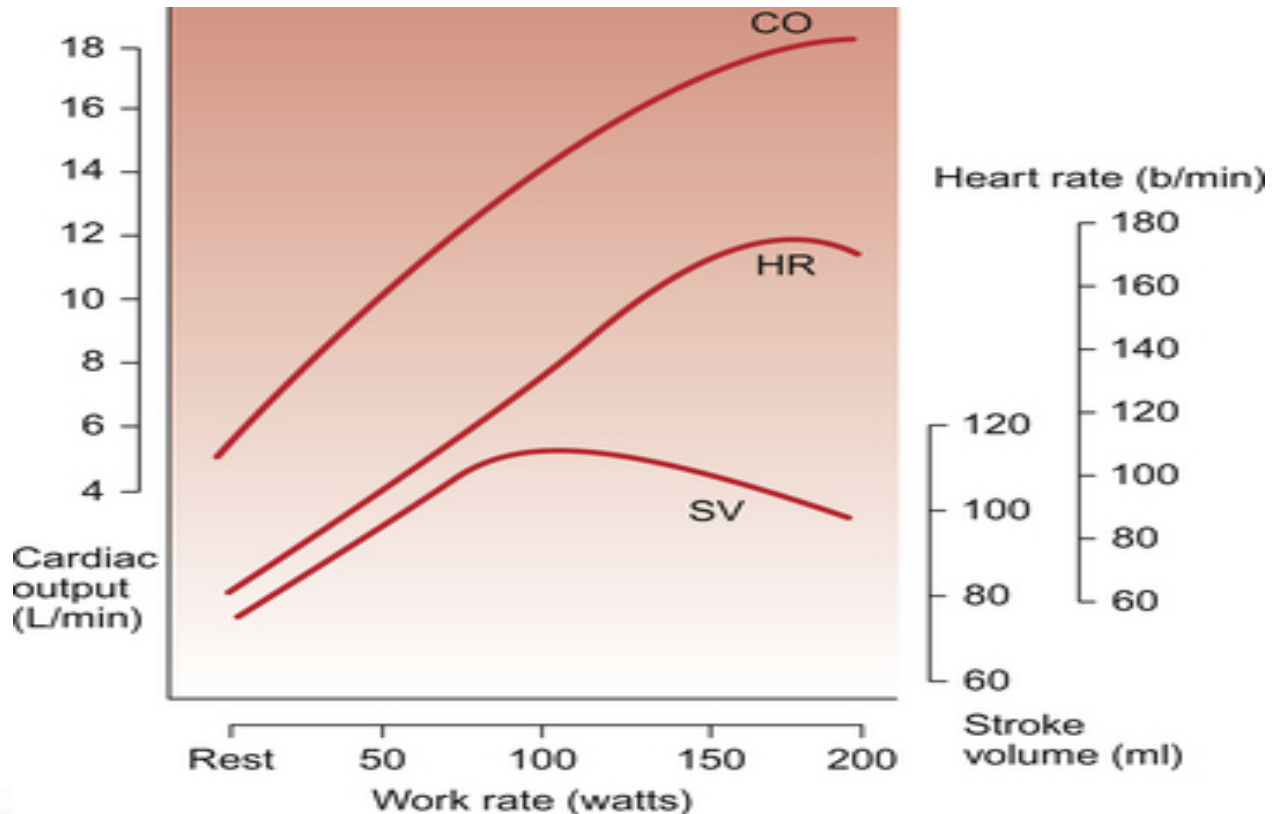
Cardiovascular System in Exercise cont...

- ? In Marathon runner the **C.O.P** increases from its resting level of about 5.5 L/min to 30 L/min.
- ? The **stroke volume** increases from 105 to 162 milliliters, an increase of about 50%.
- ? Whereas the **heart rate** increases from 50 to 185 beats/min, an increase of 270 %.
- ? The heart rate increase a greater proportion of the increase in cardiac output than does the increase in the stroke volume.



Approximate stroke volume output and heart rate at different levels of cardiac output in a marathon athlete.

Role of Stroke Volume and Heart Rate in Increasing the Cardiac Output



Body Heat In Exercise

Almost all the energy released by the body's metabolism of nutrients is converted into body heat.

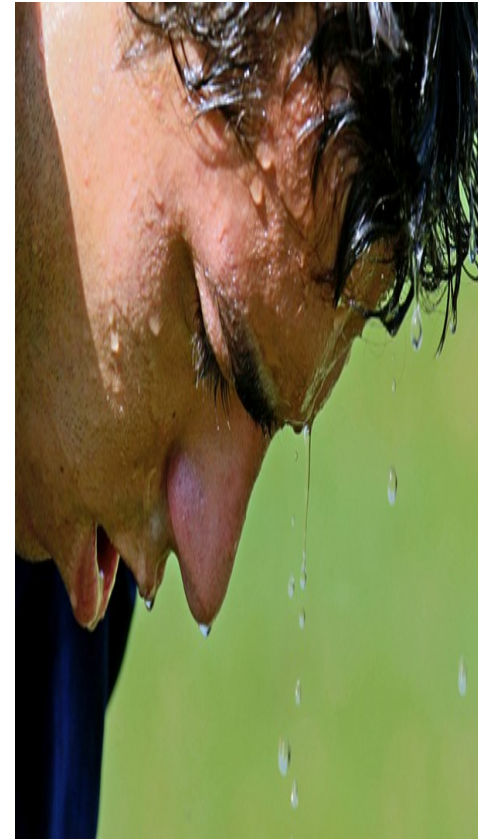
Working muscle use only 20-25 % of the energy in work production, minimal part of this is used for :

- (1) overcoming viscous resistance to the movement of the muscles and joints,
- (2) overcoming the friction of the blood flowing through the blood vessels,
- (3) other similar effects—all of which convert the muscle contractile energy into heat.

almost all the energy that does go into creating muscle work still becomes body heat

What will happen if sweating mechanism cannot eliminate the heat? see

Guyton & Hall 13E Unit XV chapter 85
page 1094



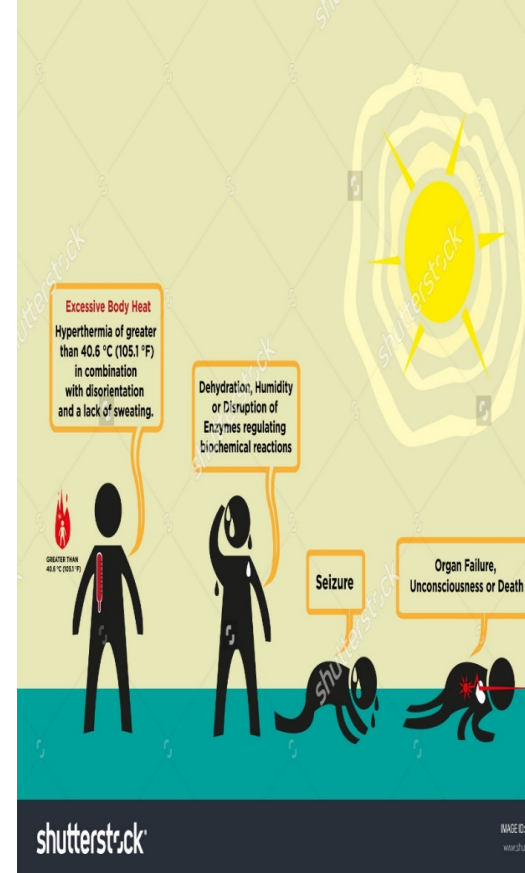
Heatstroke

During endurance training body temperature rises **from 37° to 40°C**)

In hot and humid conditions body temperature rise up to **41° to 42°C**)

High temperature is destructive to tissue cells mainly (brain cells) .

Symptoms: Body weakness, exhaustion, headache, dizziness, nausea (disgust), sweating, confusion, uncontrolled gait, collapse, and unconsciousness and may lead to death.



Treatment of heatstroke

The most practical way :

- ▶ Remove all clothing
- ▶ Maintain a spray of cool water on all surfaces of the body or continually sponge the body.
- ▶ Blow air over the body with a fan.
- ▶ Physicians prefer total immersion of the body in water containing a mush of crushed ice if available.





Thank you !