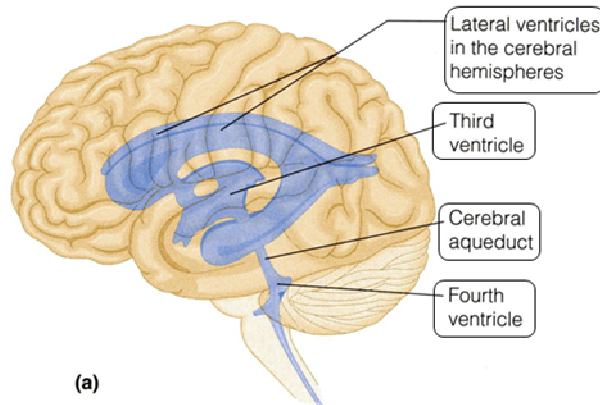


LATERAL VENTRICLE

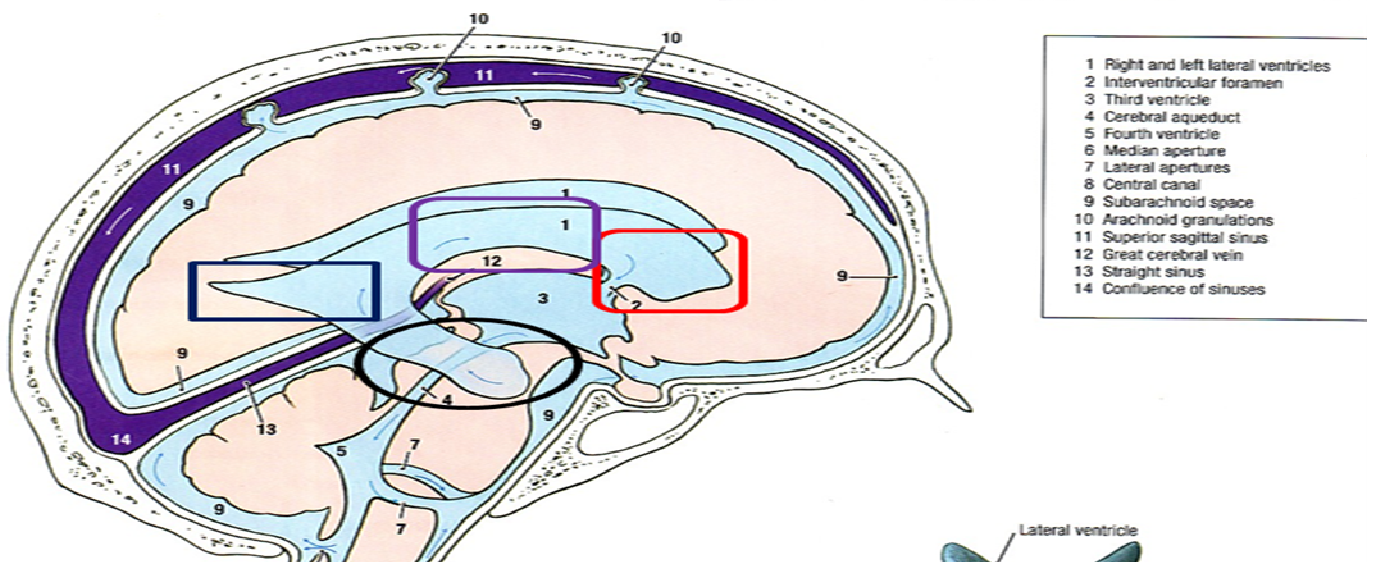
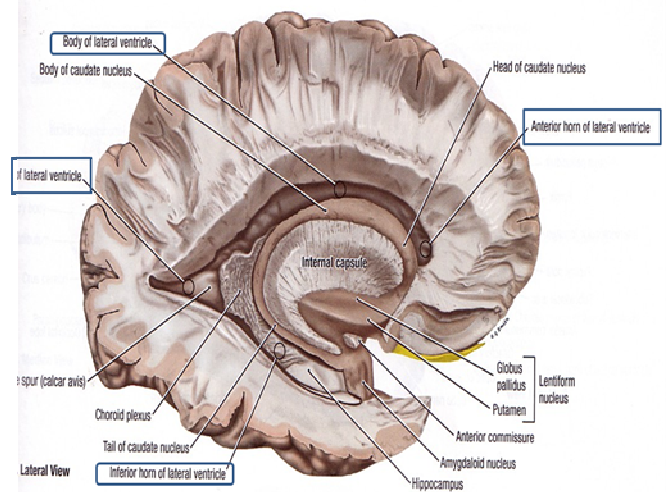
BRAIN VENTRICLES :

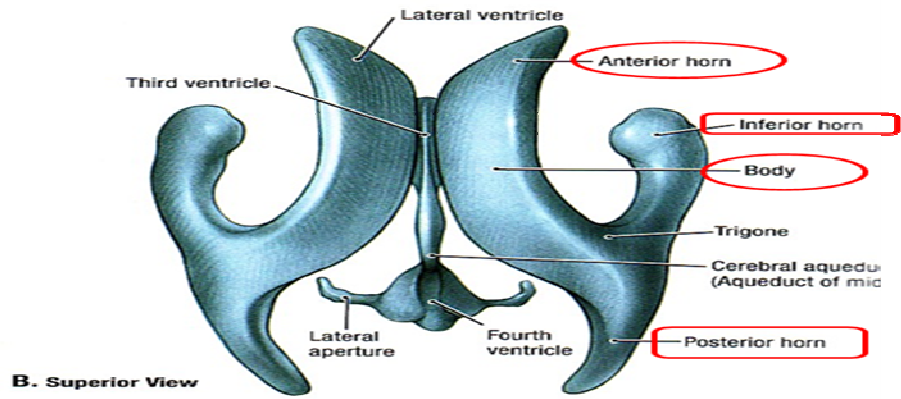
- The brain is bathed by the cerebrospinal fluid (CSF).
- Inside the brain, there are spaces (**ventricles**) filled with CSF.
- There are 4 ventricles :
 - The 2 **lateral ventricles** are in the brain hemispheres.
 - The **3rd ventricle** is in the diencephalon.
 - The **4th ventricle** is between the pons, open medulla and the cerebellum.
 - The **cerebral aqueduct** connects the 3rd to the 4th ventricle.



LATERAL VENTRICLE :

- It is the cavity of the cerebral hemisphere.
- It is C-shaped.
- It has 3 horns & central part :
 - **Anterior Horn** : in the frontal lobe.
 - **Posterior horn** : in the occipital lobe.
 - **Inferior horn** : in temporal lobe.
 - **Central part or body** : in the parietal lobe.

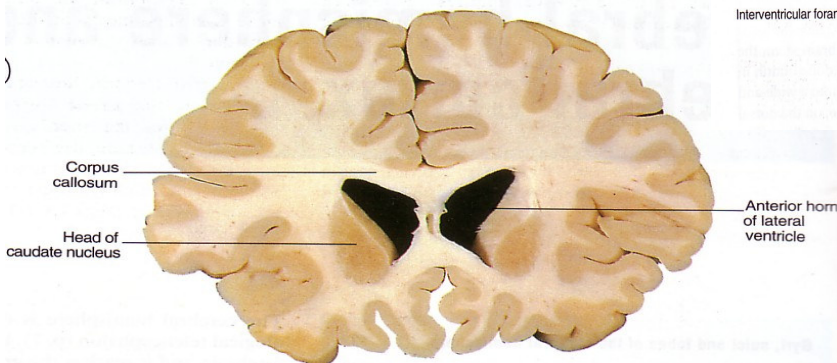
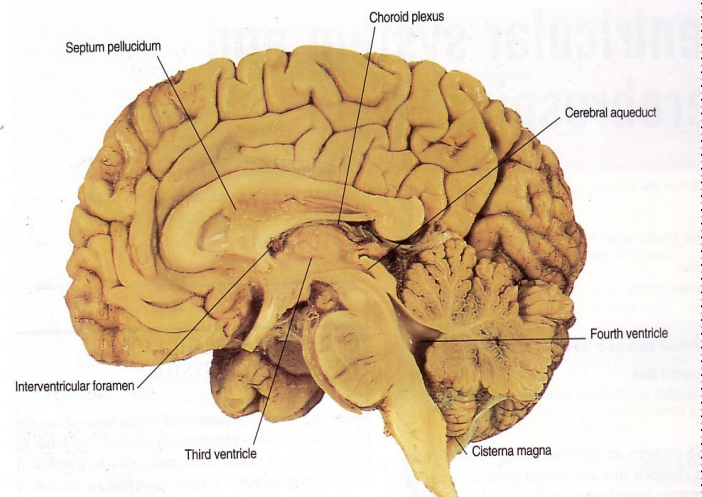




Superior view of the ventricular system

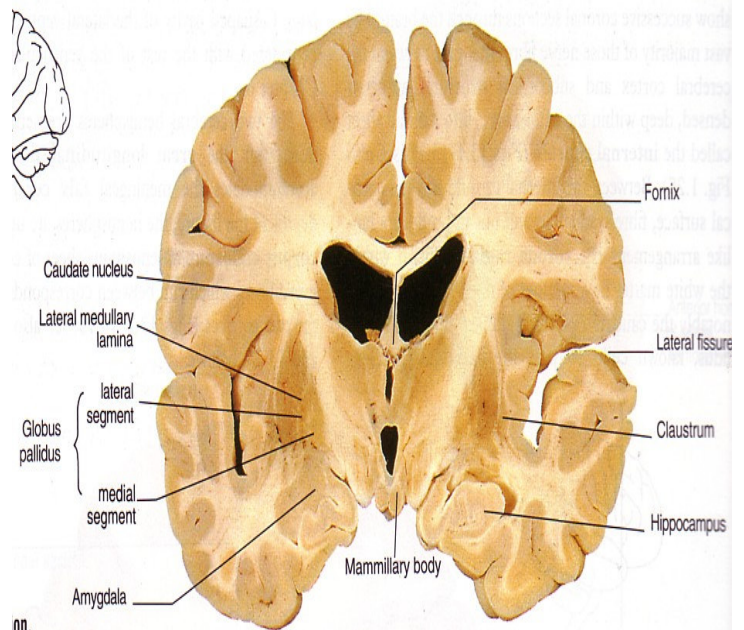
ANTERIOR HORN :

- Lies in the frontal lobe.
- Roof : Corpus callosum (trunk).
- Floor : Corpus callosum (Rostrum).
- Anterior : Corpus callosum (Genu).
- Medially : Septum pellucidum.
- Laterally : Caudate nucleus.



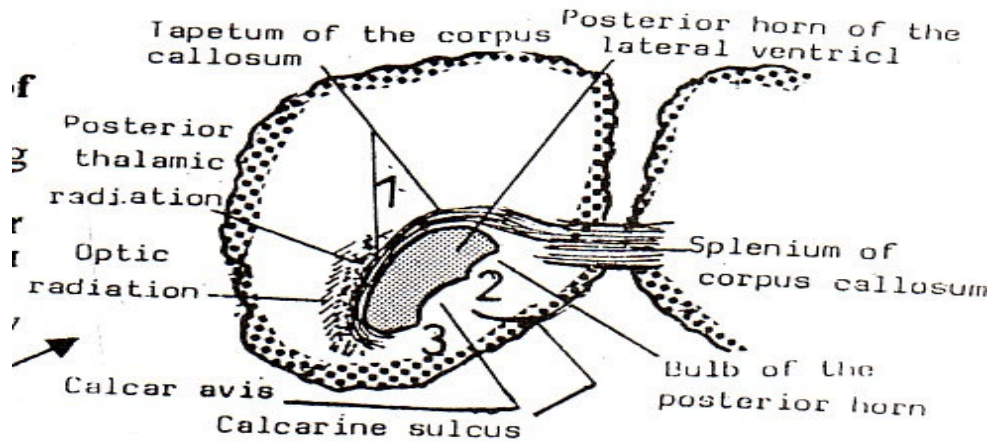
BODY OR CENTRAL PART :

- Lies in the parietal lobe.
- Roof : Corpus callosum (Trunk).
- Floor : Sloping.
- *From lateral to medial it is formed by :*
body of the caudate nucleus,
superior surface of thalamus choroid plexus,
body of fornix.
- Medial wall : septum pellucidum.
- Lateral wall : Meeting of roof & floor.



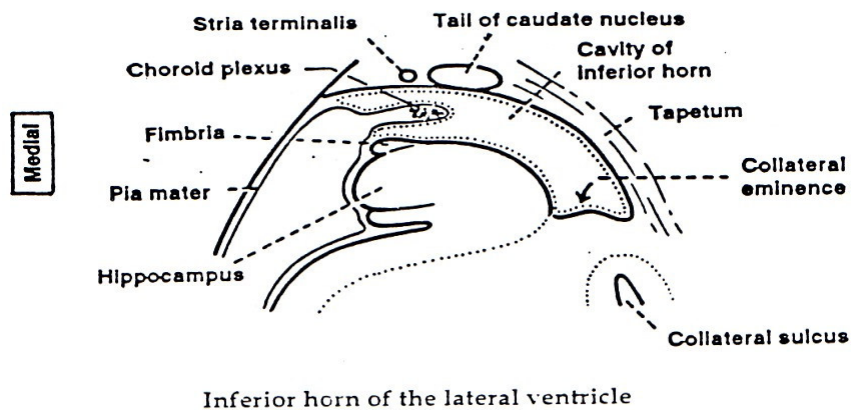
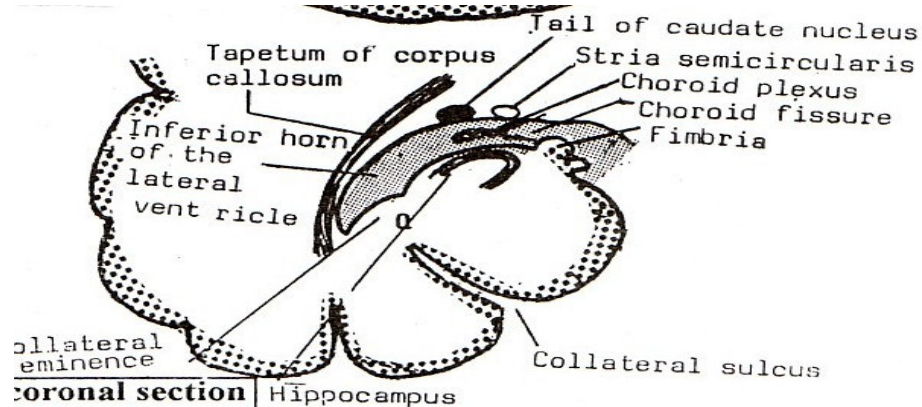
POSTERIOR HORN :

- Lies in the occipital lobe.
- Roof, lateral wall, and floor : are formed by the Tapetum of the corpus callosum.
- Medially : there are 2 elevations :
 1. **Bulb of posterior horn** (formed by forceps major).
 2. **Calcar avis** : produced by calcarine sulcus.



INFERIOR HORN :

- It lies in the temporal lobe.
- Roof : Tapetum, Tail of caudate nucleus, amygdaloid nucleus and stria terminalis.
- Floor : Hippocampus, fimbria of hippocampus & collateral eminence.
- Lateral wall : Tapetum of corpus callosum.



SELF QUIZ

1- Regarding the brain ventricles all of the following are true EXCEPT :

- a. There are 4 ventricles present inside the brain and filled-up by CSF.
- b. The 3rd ventricle lies in the diencephalon.
- c. All horns of lateral ventricles have relation with Corpus callosum.
- d. The body & anterior horn of lateral ventricles have same relation medially.
- e. The 4th ventricle lies between the pons, closed medulla and the cerebellum.

2- Regarding the anterior horn of lateral ventricle all of the following are true EXCEPT :

- a. It lies in the frontal lobe.
- b. It is related to Corpus callosum by 3 sides.
- c. It is related to Genu, Rostrum, and Splenium of Corpus callosum.
- d. It is related medially to Septum pellucidum.
- e. It is related laterally to Caudate nucleus.

3- Regarding the central part of lateral ventricle all of the following are true EXCEPT :

- a. Lies in the parietal lobe.
- b. Its medial wall is formed by septum pellucidum.
- c. Its lateral wall is formed by meeting of Sloping and Corpus callosum.
- d. Its roof is formed by Genu of Corpus callosum.
- e. Its floor is formed by Sloping.

4- Regarding the posterior horn of lateral ventricle :

- a. It is related laterally to Bulb of posterior horn and Calcar avis.
- b. It is related to Tapetum of Corpus callosum by 3 sides.
- c. Calcar avis is a groove which produced by calcarine sulcus.
- d. Bulb of posterior horn is formed by forceps minor.
- e. It has relation with stria terminalis and amygdaloid nucleus.

5- Regarding the inferior horn of lateral ventricle :

- a. It is related to Corpus callosum by 3 sides.
- b. Its medial wall is formed by Tapetum of corpus callosum.
- c. Its roof is formed by head of caudate nucleus.
- d. Its floor is formed by hippocampus, fimbria of parahippocampus & collateral eminence.
- e. None of the above.

1. e	2. c	3. d	4. b	5. e
------	------	------	------	------

THE END

LoveTomy Team 426

Team leader : Dr. hams

Dr. S Dr. noop Omar H

ابتنسم !! همي بروحي

M.A.M Abo Slo7 Cute Killer

