

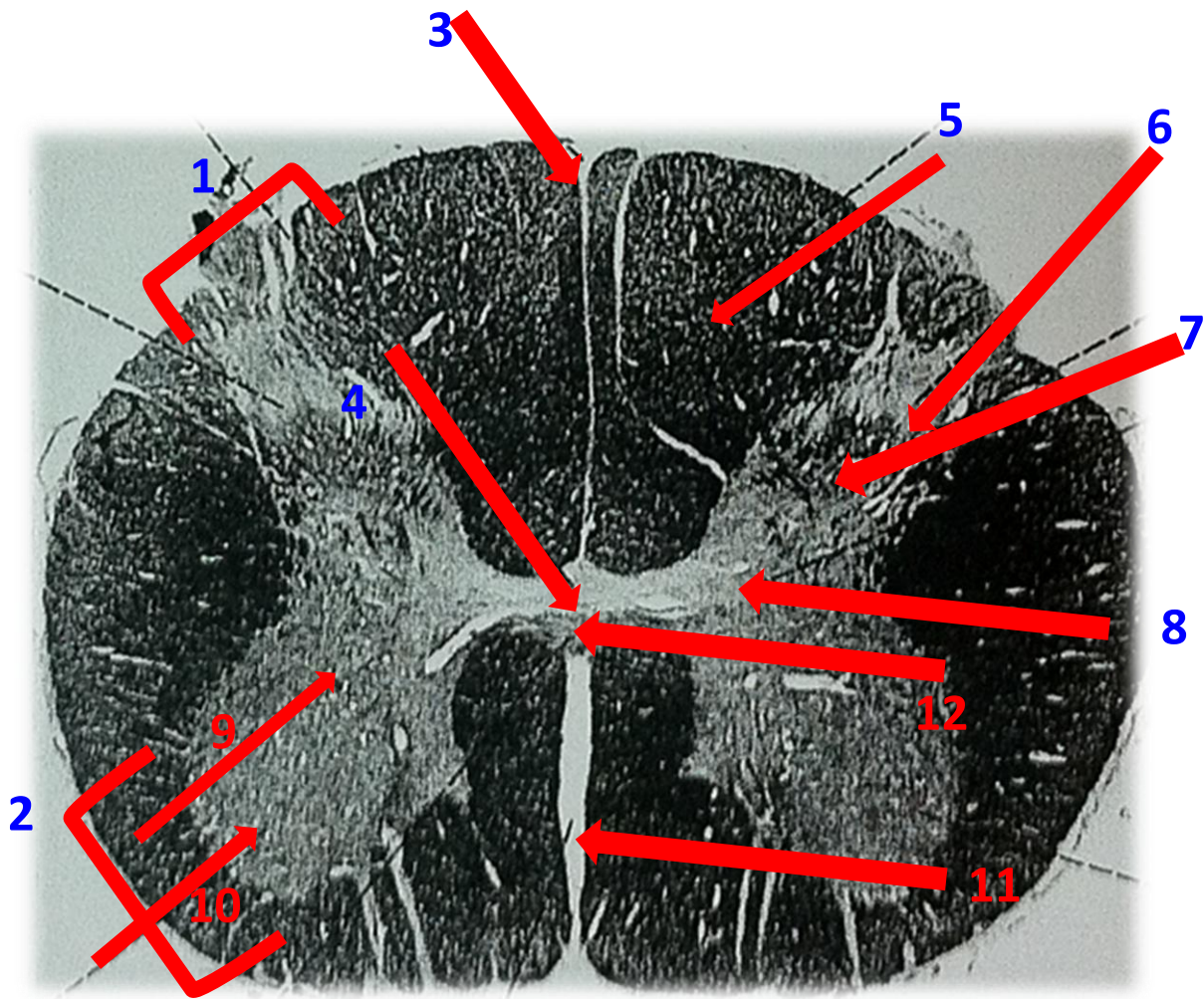
PRACTICAL HISTOLOGY

CNS BLOCK

430 HISTOLOGY TEAM

RAWAN ALSULTAN WAAD ALWGAIT

Lumbar Segment Of The Spinal Cord



1-Dorsal Horn

2-Ventral Horn

3-posterior median septum

4-central canal

5-fasciculus gracilis

11-anterior median fissure

6-Substantia Gelatinosa

7-Nucleus Proprius

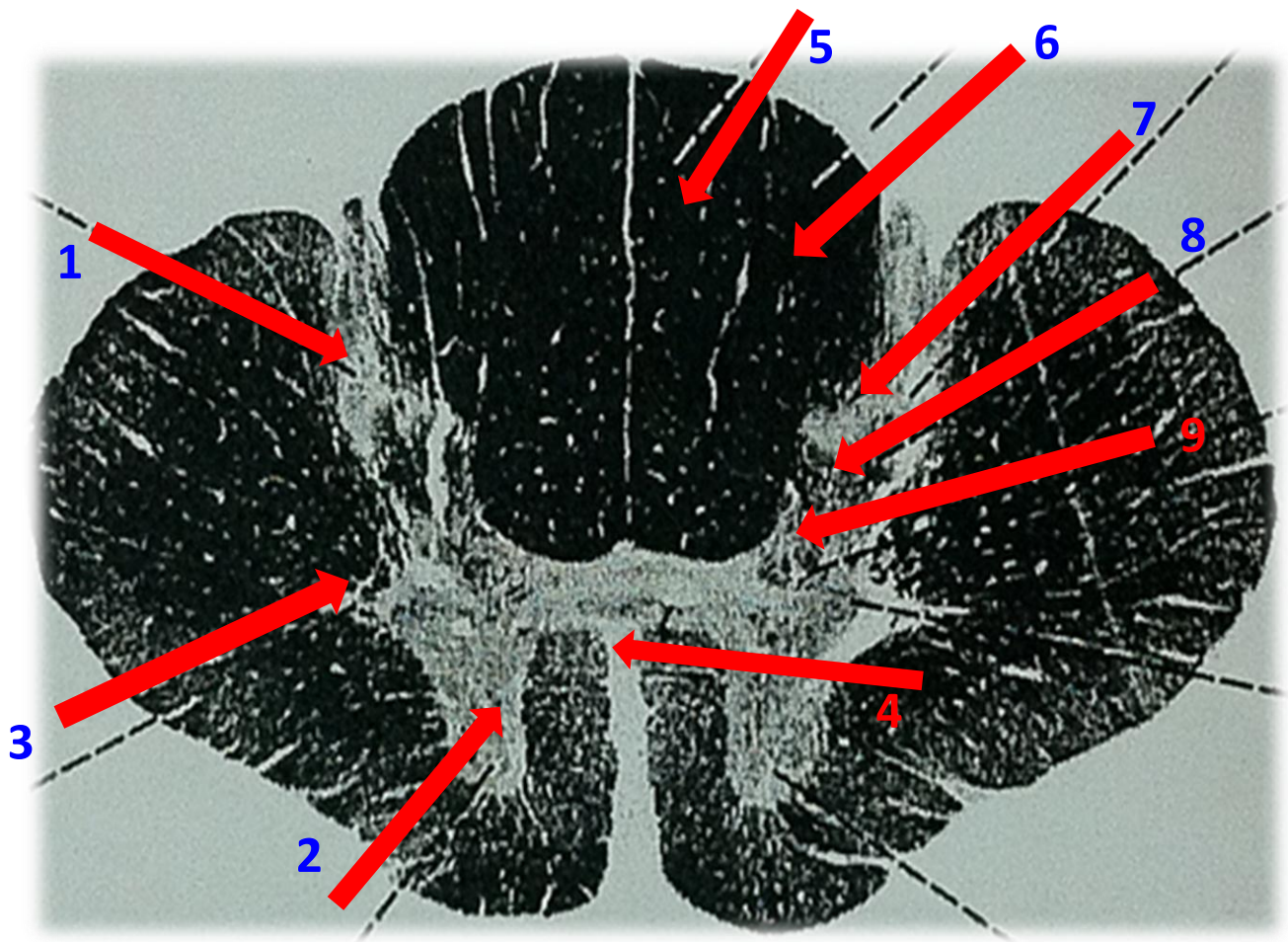
8-Nucleus Dorsalis (Clark's column)

9- motor neurons for lower limbs muscles

10-motor neurons for trunk muscles

12-White Commissure

Thoracic Segment Of The Spinal Cord



1-Dorsal Horn

2-Ventral Horn

3-lateral Horn

4- anterior median fissure

5- fasciculus gracilis

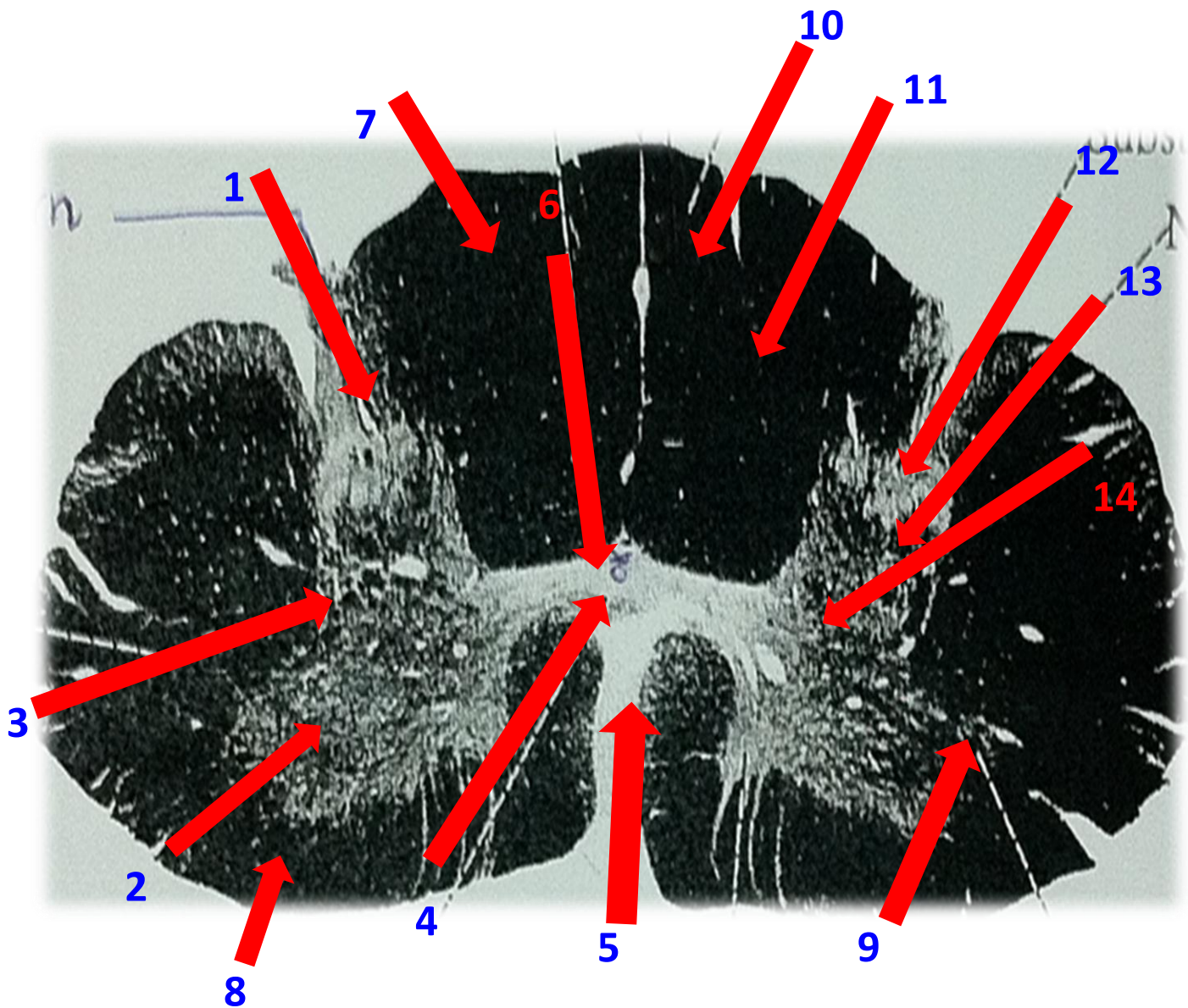
6-fasciculus cuneatus

7- Substantia Gelatinosa

8- Nucleus Proprius

9- Nucleus Dorsalis (Clark's column)

Cervical Segment of the spinal cord



1-Dorsal Horn

6- gray commissure

11- fasciculus cuneatus

2-Ventral Horn

7-posterior white column

12-Substantia Gelatinosa

3-lateral Horn

8-anterior white column

13- Nucleus Proprius

4- White Commissure

9-accessory nucleus

14- Nucleus Dorsalis

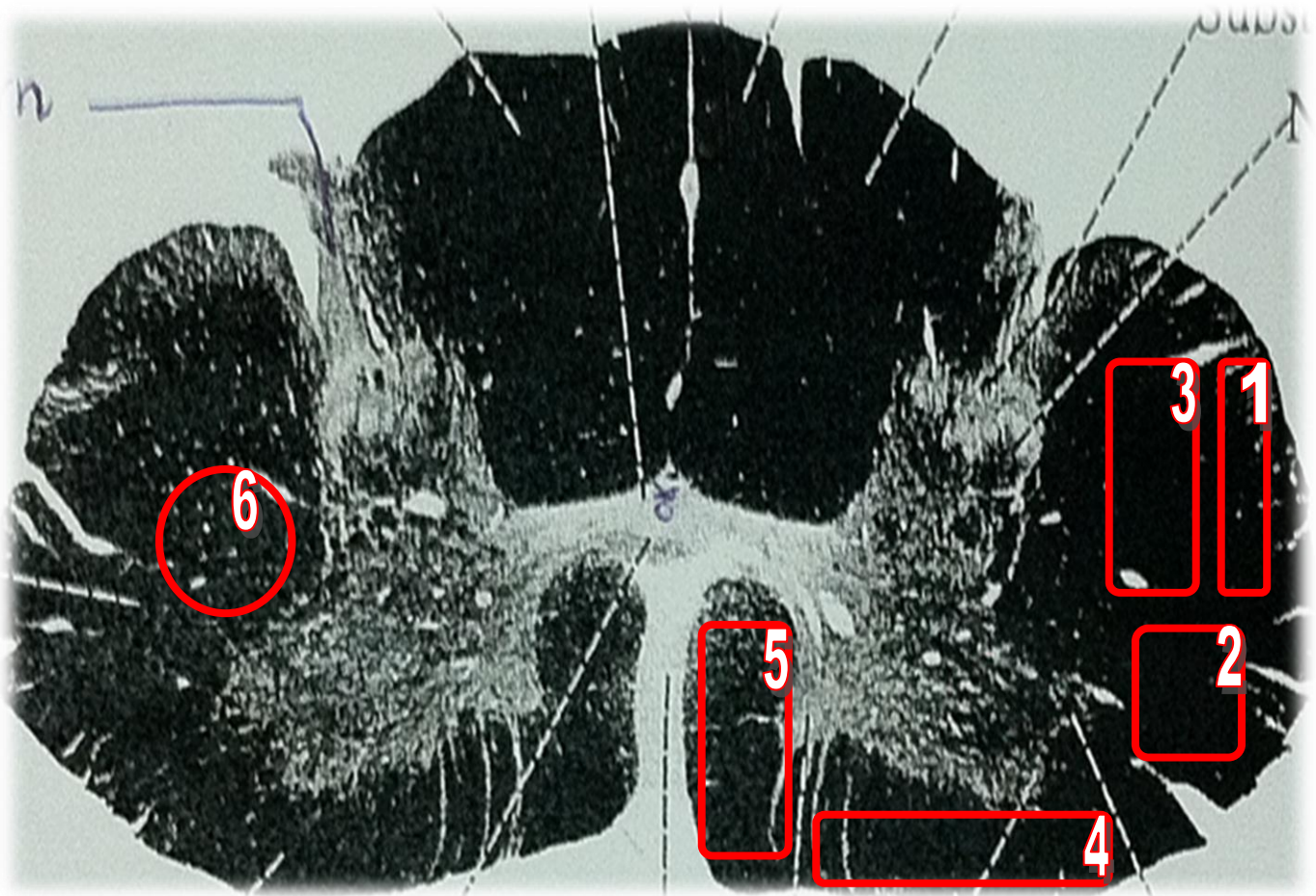
5- anterior median fissure

10- fasciculus gracilis

Cervical Segment of the spinal cord

(it is the same picture above)

****important****



1- posterior spinocerebellar tract

2- anterior spinocerebellar tract

3- lateral spinothalamic tract

4- anterior spinothalamic tract

5- anterior corticospinal tract

6- lateral corticospinal tract

ascending tracts

descending tracts

IMPORTANT POINTS

Cervicle segment:

(No lateral horn-gracilis and cuneatus are very clear-**anterior horn is thicker than posterior horn**)

Thoracic segment:

(**lateral horn**- gracilis and cuneatus are clear- thin horns)

Lumber segment :

(No lateral horn _ gracilis is clear – **thick horns**)

GOOD LUCK