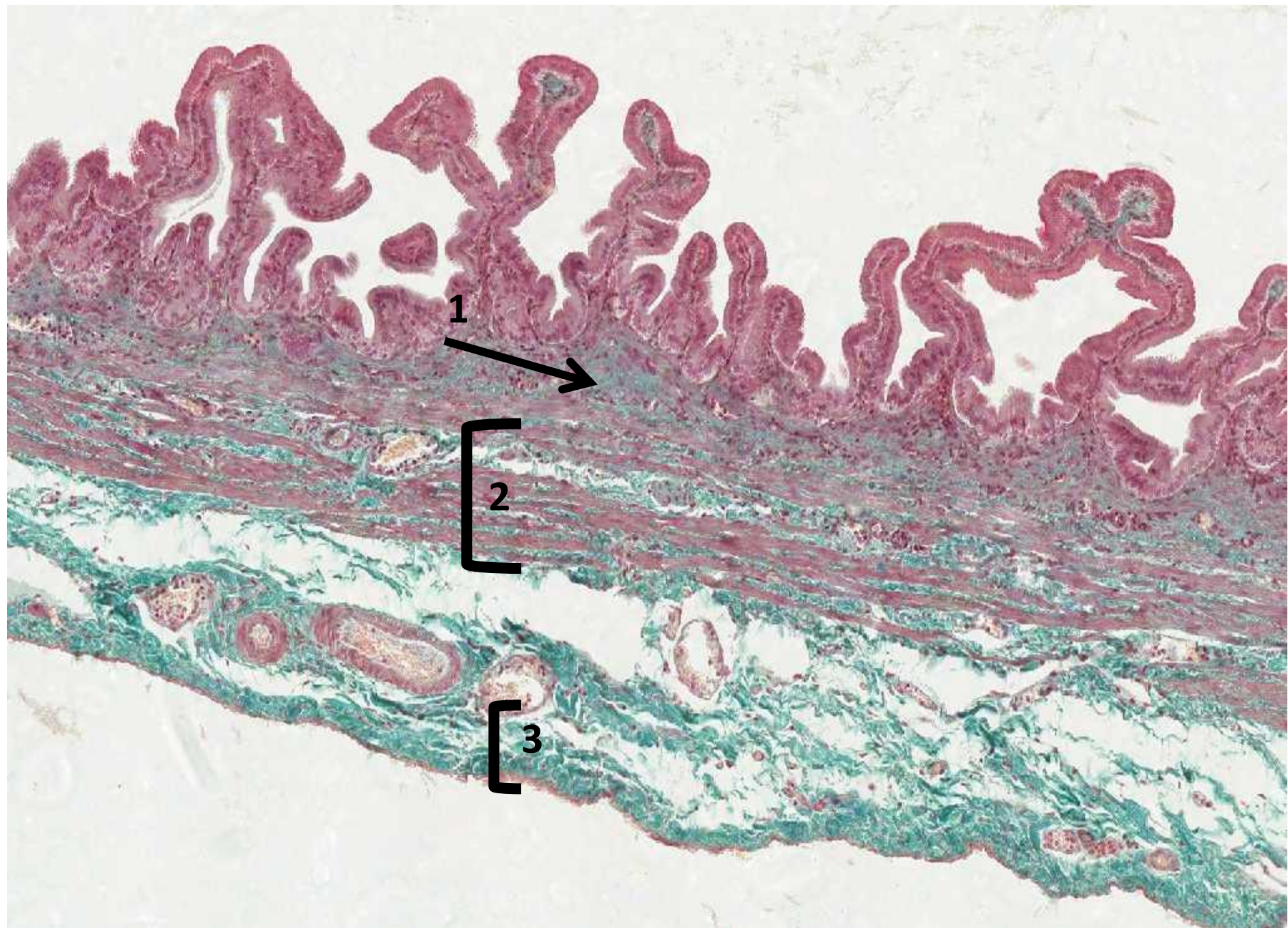


PRACTICAL HISTOLOGY

HISTOLOGY TEAM

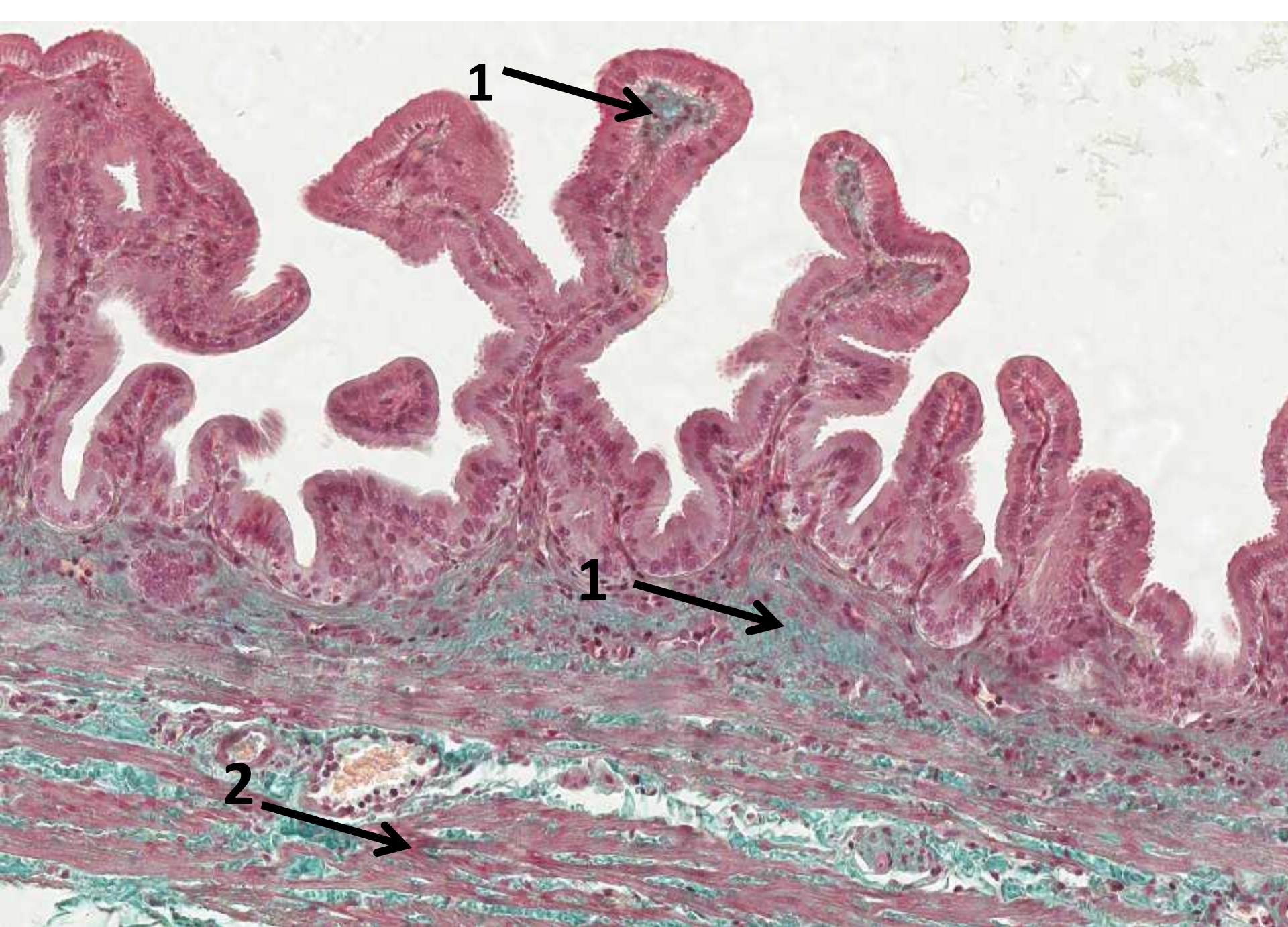
RAWAN ALSULTAN WAAD ALWGAIT



Gall Bladder

Mucosa: highly folded Simple columnar epithelium.

- 1. Lamina propria: contains mucous glands in the neck of gall bladder.**
- 2. muscularis**
- 3. Serosa: C.T. covered by mesothelium.**



Gall Bladder

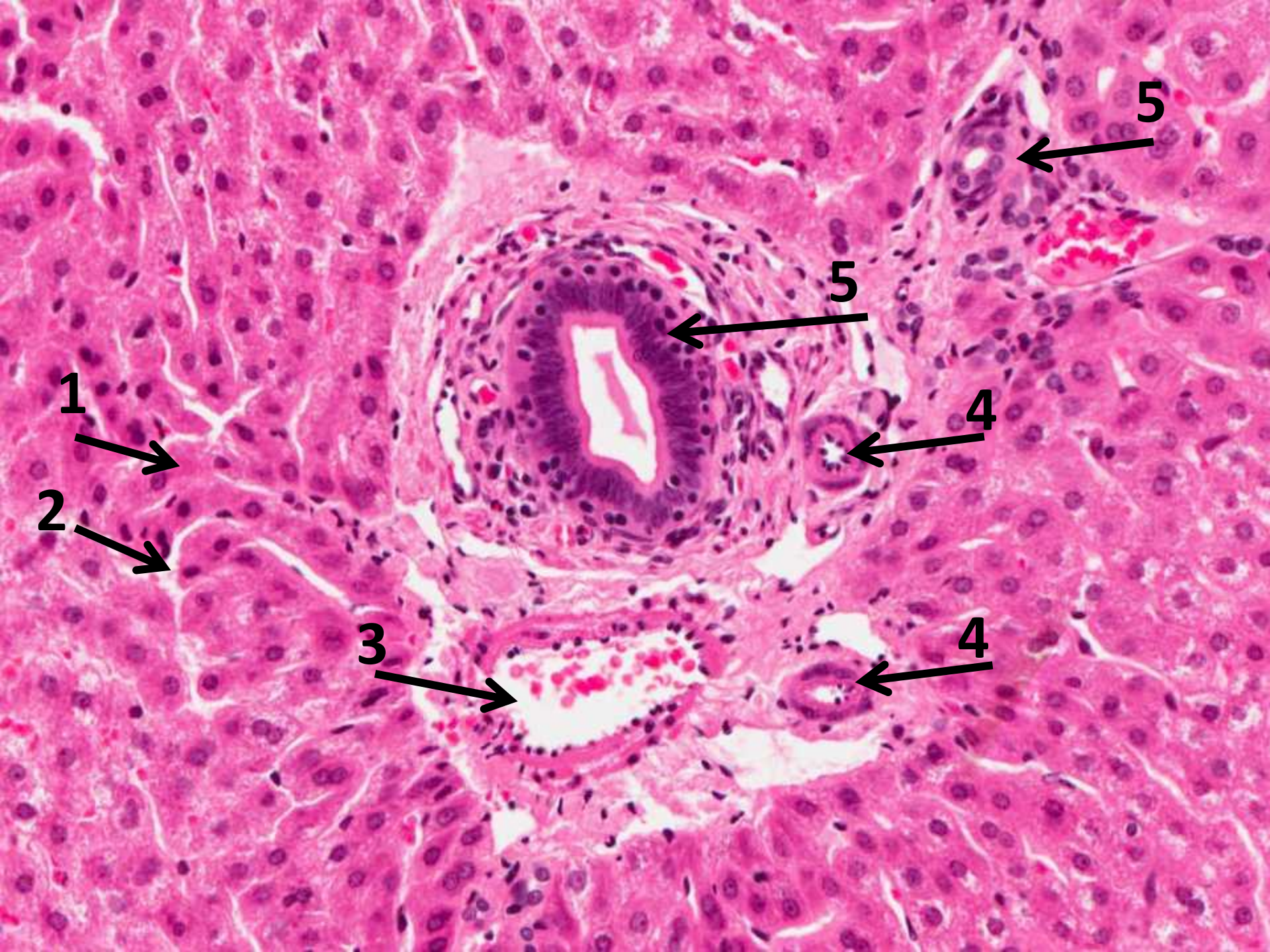
Mucosa: highly folded Simple columnar epithelium.

- 1. Lamina propria: contains mucous glands in the neck of gall bladder.**
- 2. Muscularis**



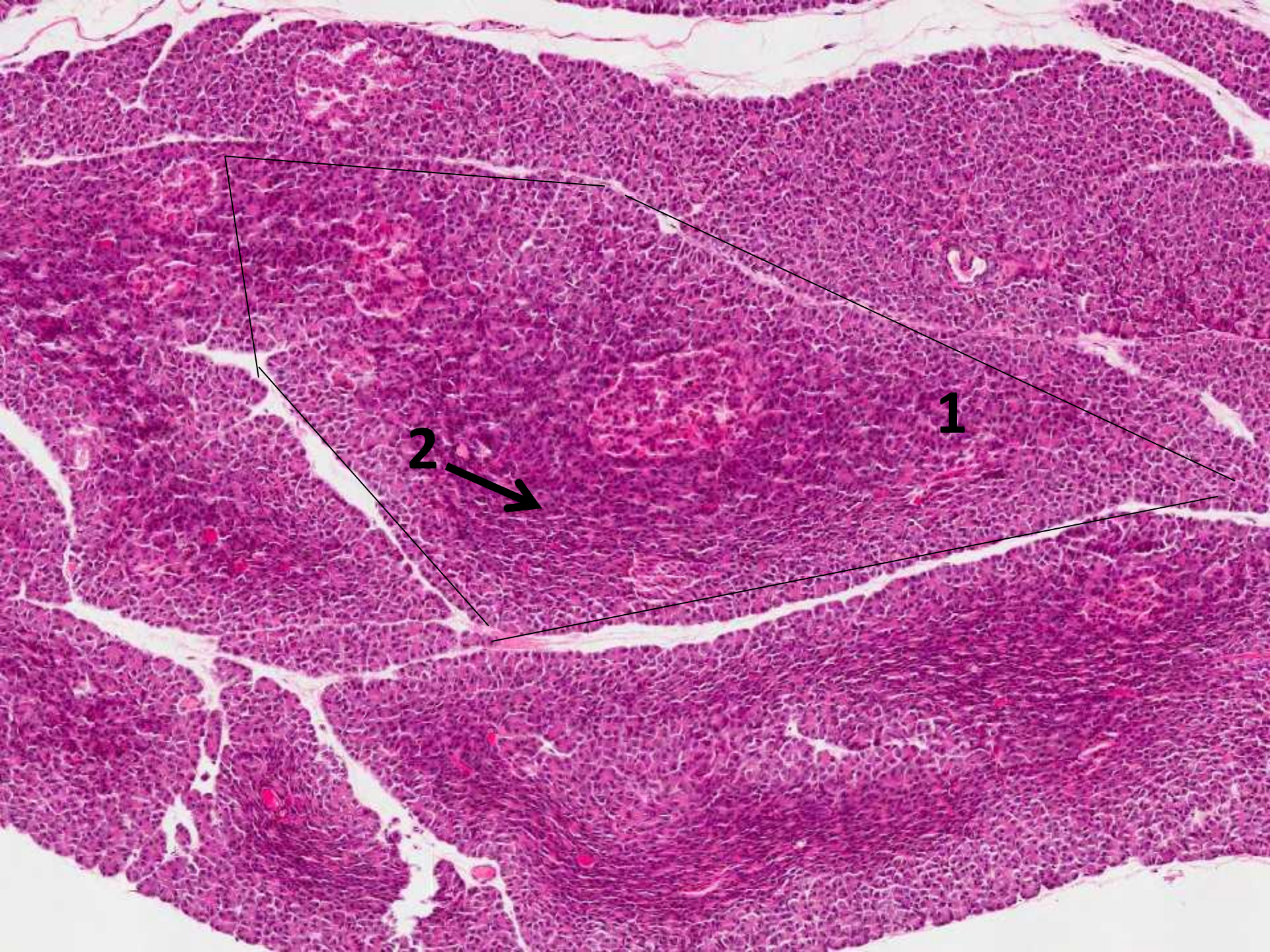
Classic Liver Lobule

- 1) Hepatic lobule**
- 2) portal area**
- 3) central vein**



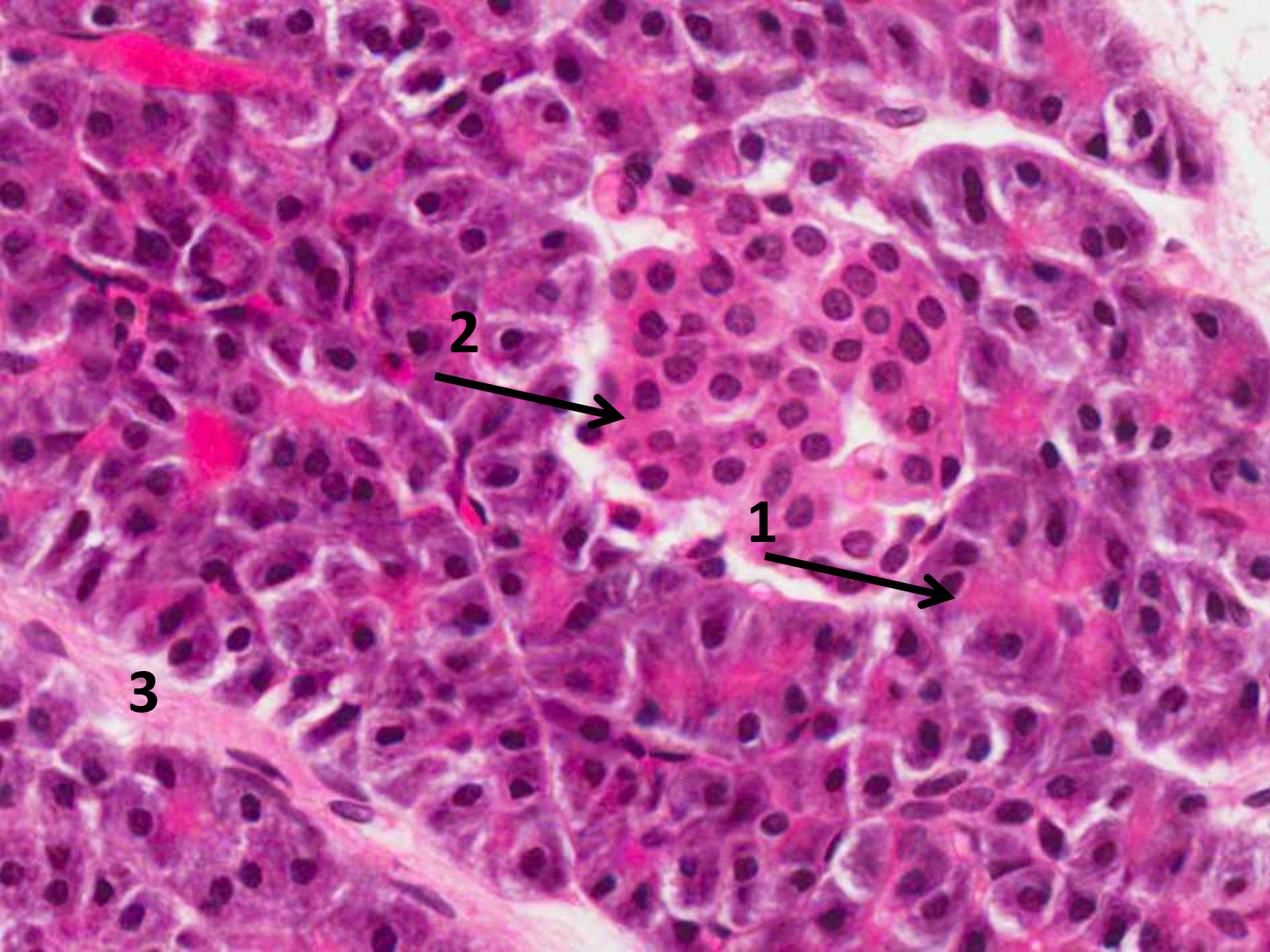
Portal area of the liver

- 1. Anastomosing plates of hepatocytes.**
- 2. Liver sinusoids (hepatic blood sinusoids)**
- 3. Branch of portal vein**
- 4. Branch of hepatic artery.**
- 5. interlobular bile ducts.**



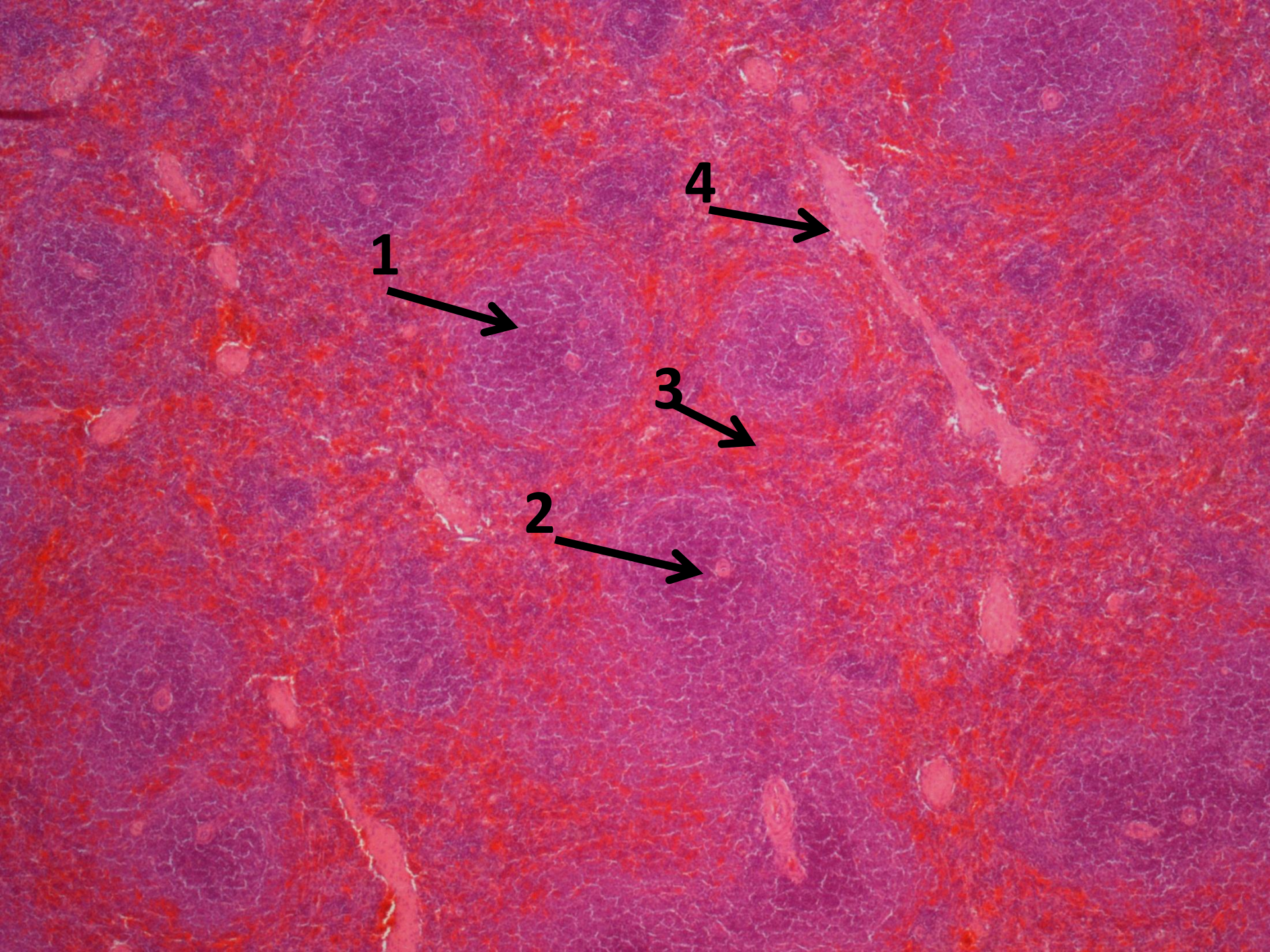
large magnification of Pancreas

- 1. Pancreatic lobule**
- 2. Pancreatic acini**



Pancreas

- 1. Pancreatic acinar Cells**
- 2. Endocrine cells**
- 3. Connective tissue**



1

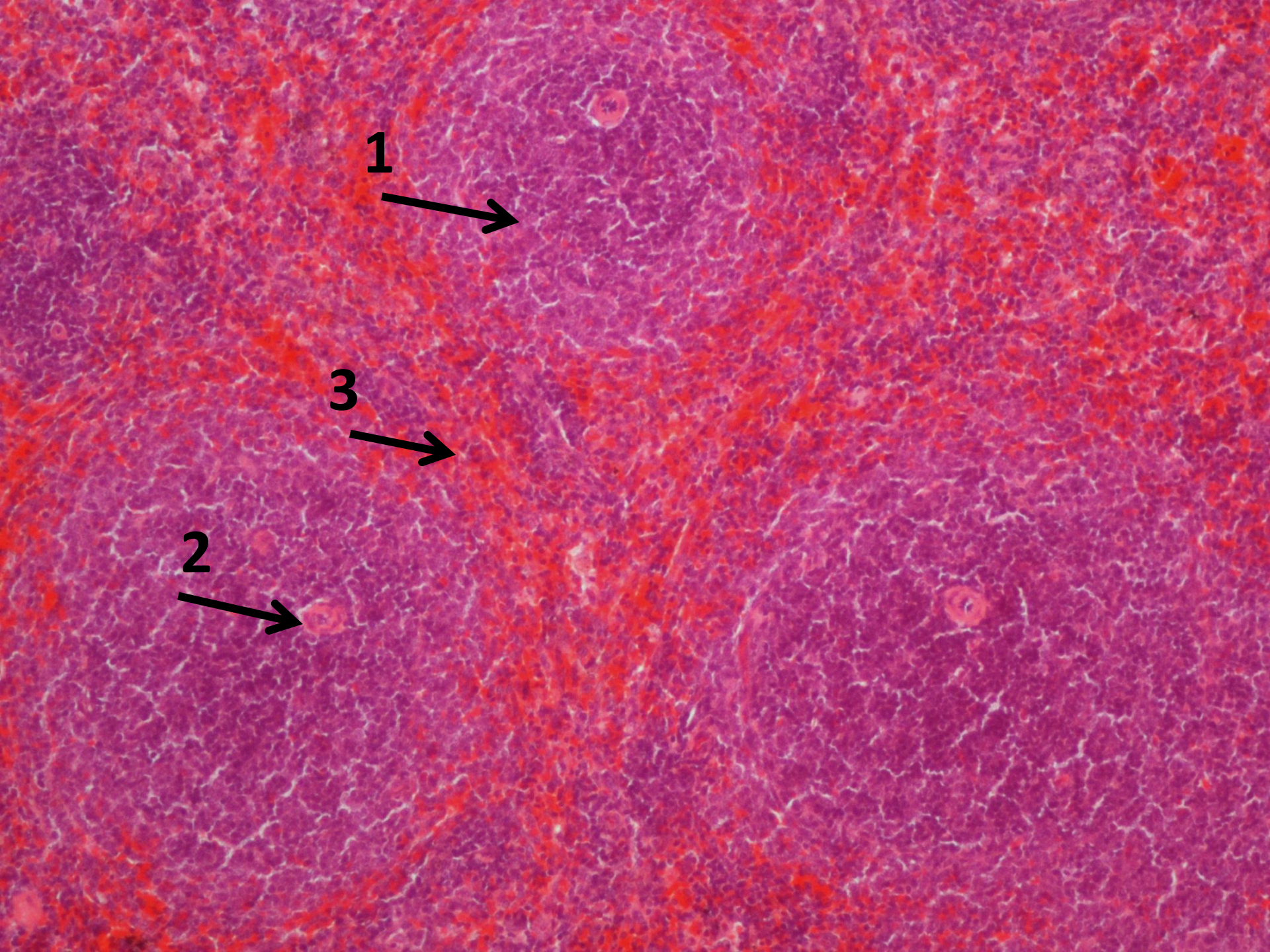
4

3

2

spleen

- 1. White Pulp**
- 2. central arteriole**
- 3. Red pulp**
- 4. Septal CT with few muscles**



spleen

1-White Pulp

2-central arteriole

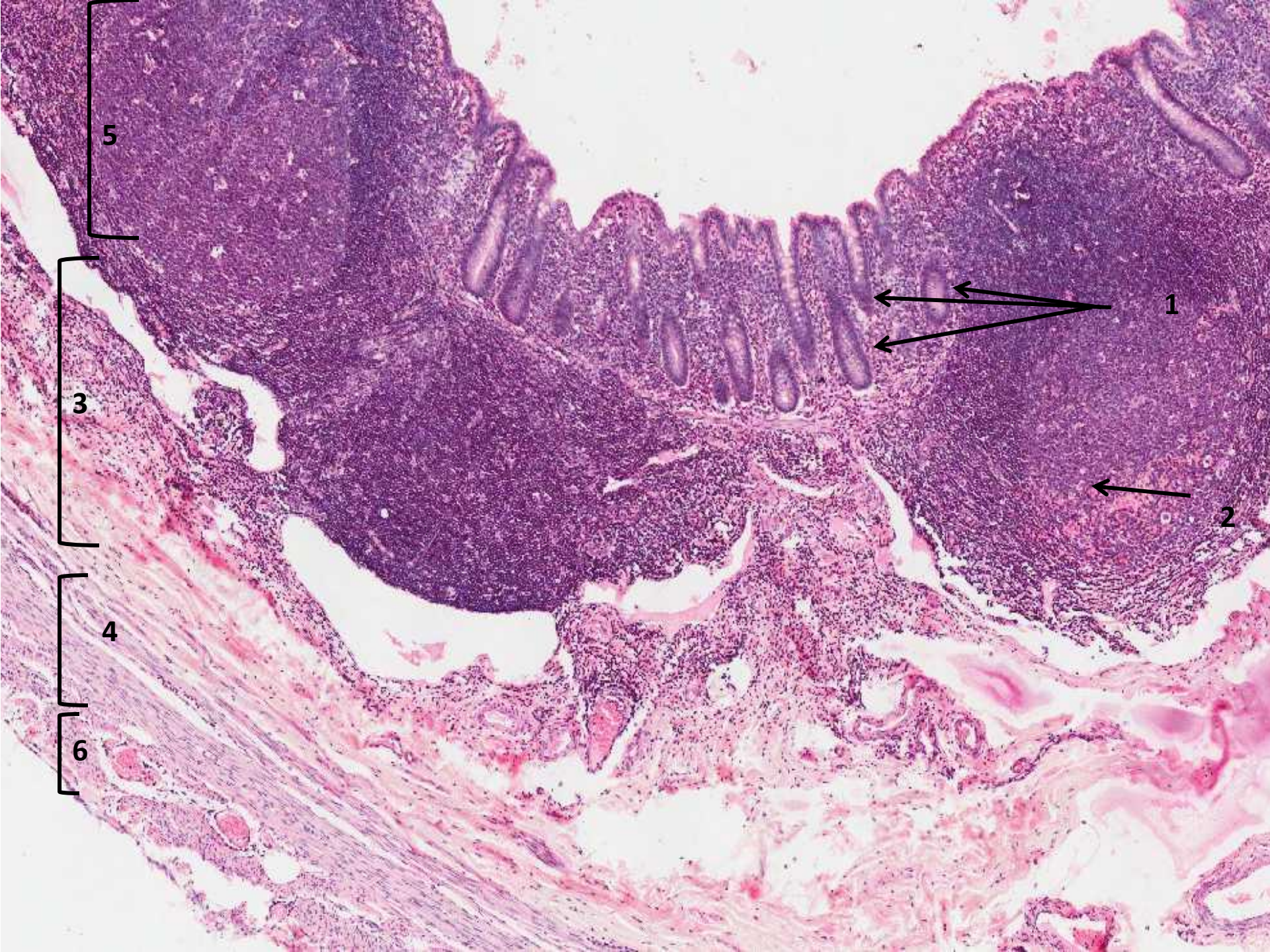
3-Red pulp



Appendix

Mucosa:

simple columnar epithelium



Appendix

-Mucosa:

simple columnar epithelium

1- crypts of lieberkuhn

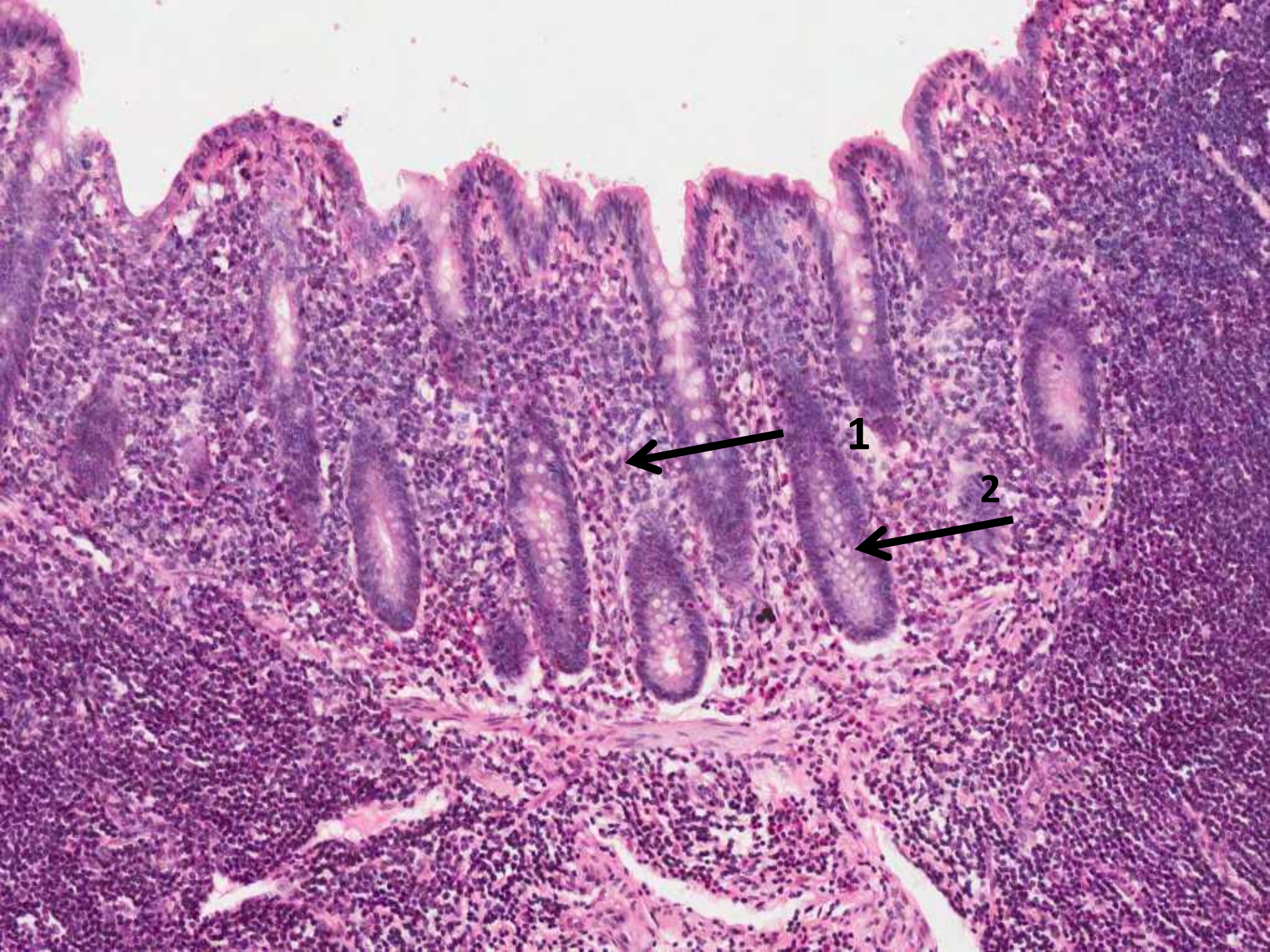
2- lymphoid tissue

3-submucosa

4-muscularis externa (not well-developed muscle)

5-mucosa

6- serosa



Appendix

Mucosa:

simple columnar epithelium

1- Lamina propria

2- crypts of lieberkuhn



colon

Epithelium: simple columnar epithelium with numerous goblet cells.

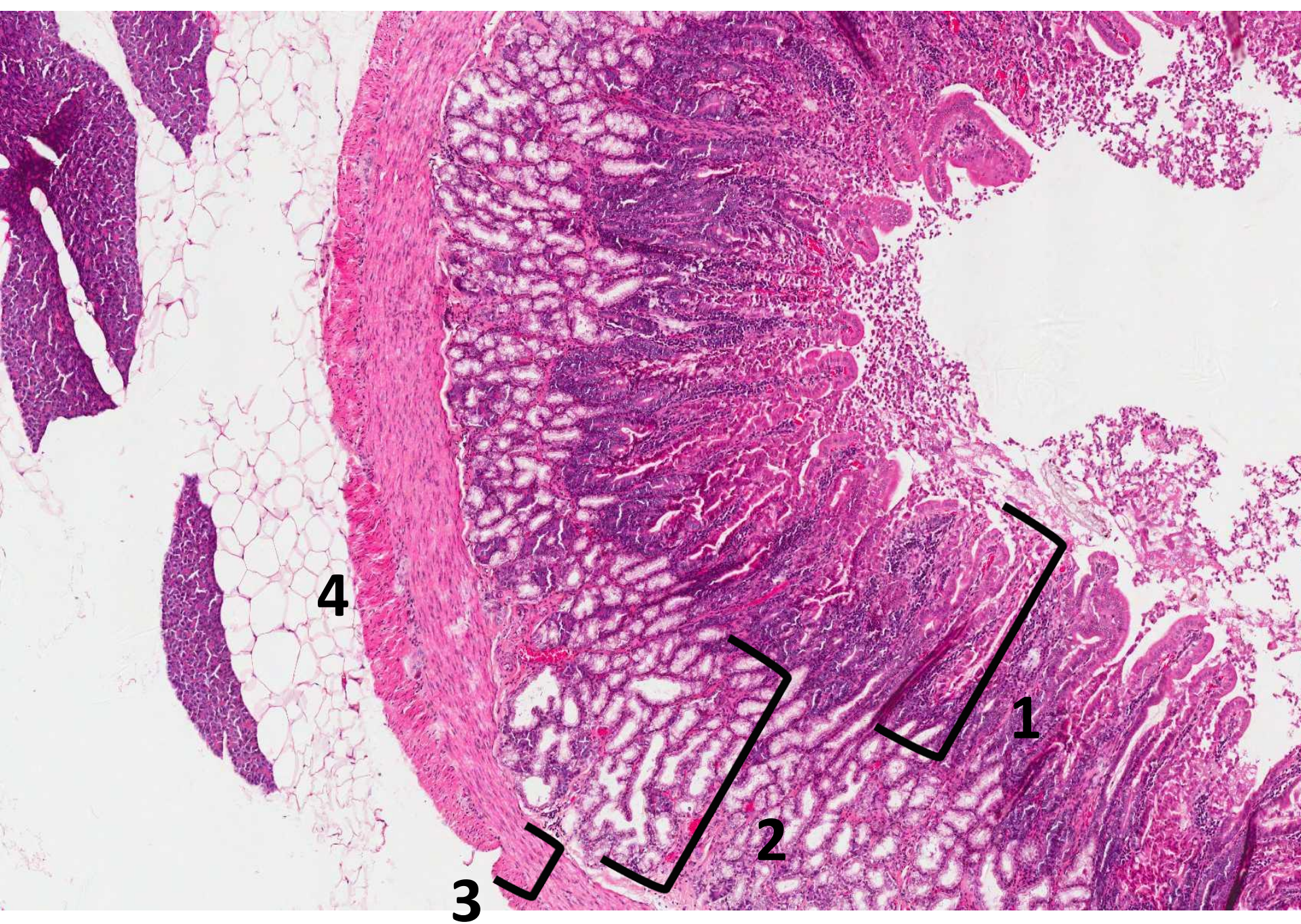
- 1. mucosa**
- 2. submucosa**
- 3. muscularis externa**
- 4. Serosa**
- 5. Lymphatic nodules**



colon

Epithelium: simple columnar epithelium with numerous goblet cells.

- 1. crypt of lieberkuhn**
- 2. lamina propria**
- 3. muscularis mucosa**
- 4. Submucosa**
- 5. Goblet cell**



Duodenum

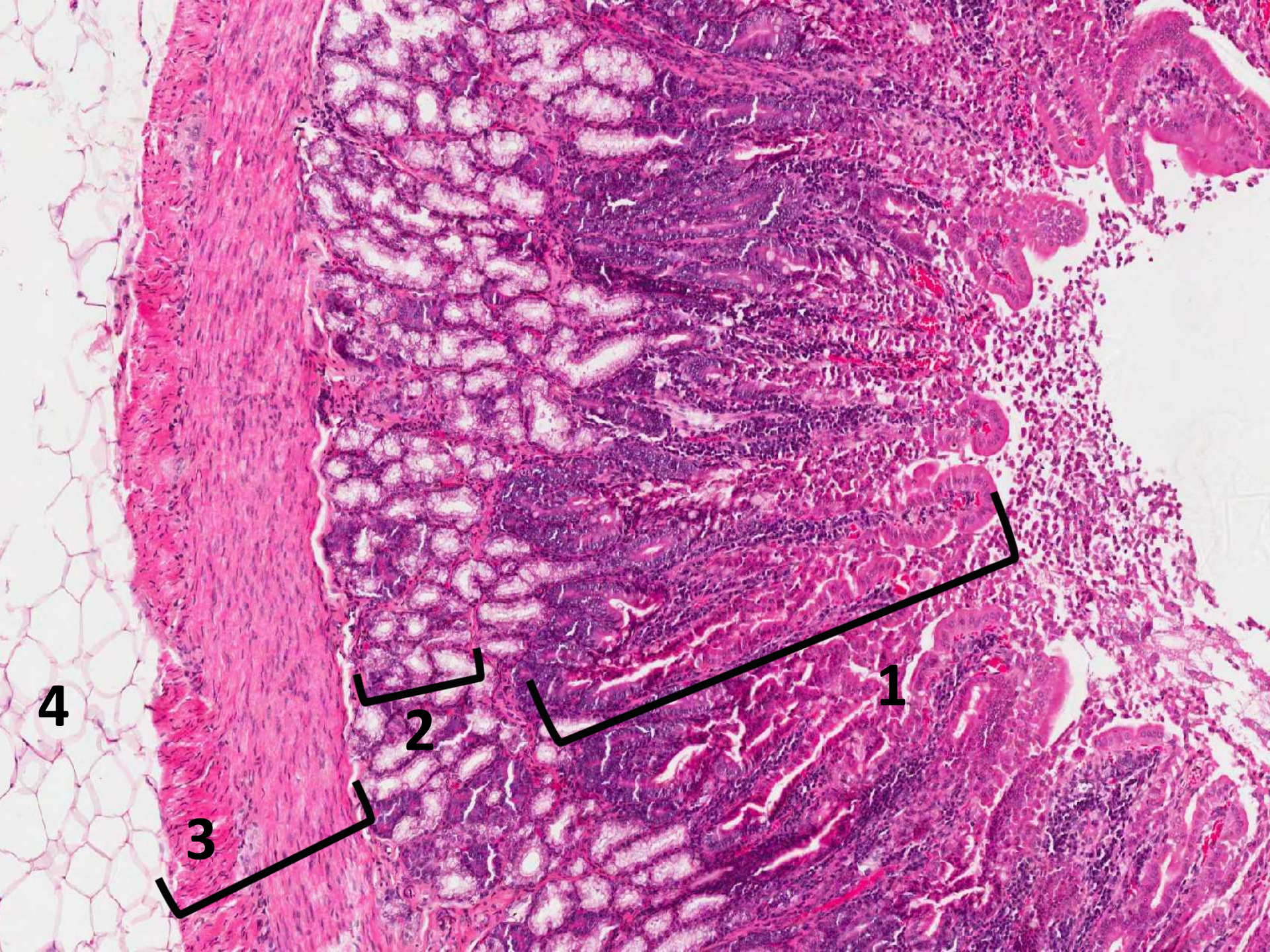
Epithelium: simple columnar epithelium with goblet cells.

1. mucosa

2. section of Brunner's glands of submucosa

3. muscularis externa

4. Adventitia



Duodenum

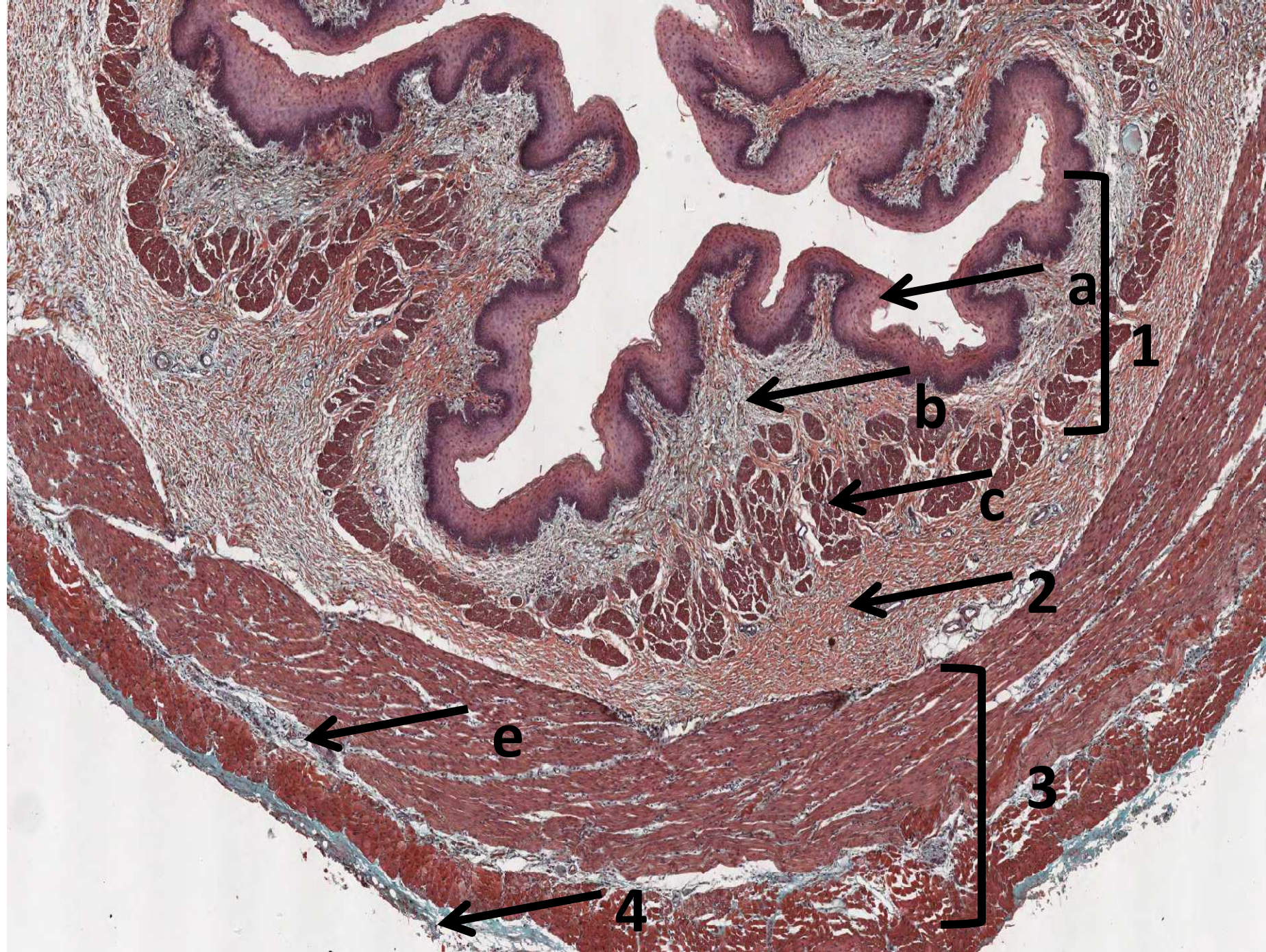
Epithelium: simple columnar epithelium with goblet cells.

1. mucosa

2. section of Brunner's glands of submucosa

3. muscularis externa

4. Adventitia



Esophagus

1- mucosa

A- Epithelial Lining:

Non-Keratinized Stratified Squamous Epithelium.

B- lamina propria

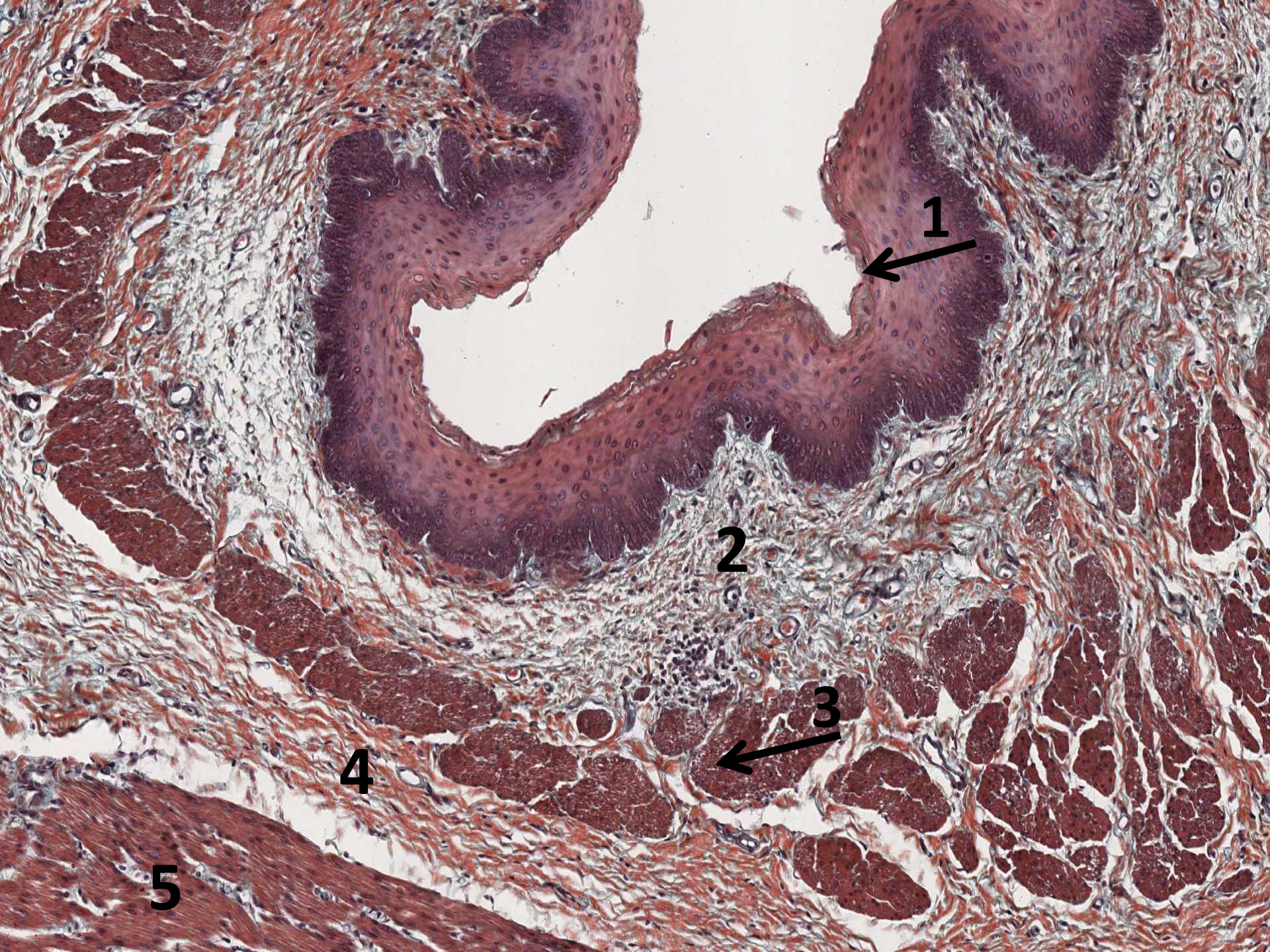
C- Muscularis mucosae

2- submucosa

3- Muscularis externa

e- myenteric plexus

4- advintitia



Esophagus

1- mucosa

Epithelial Lining:

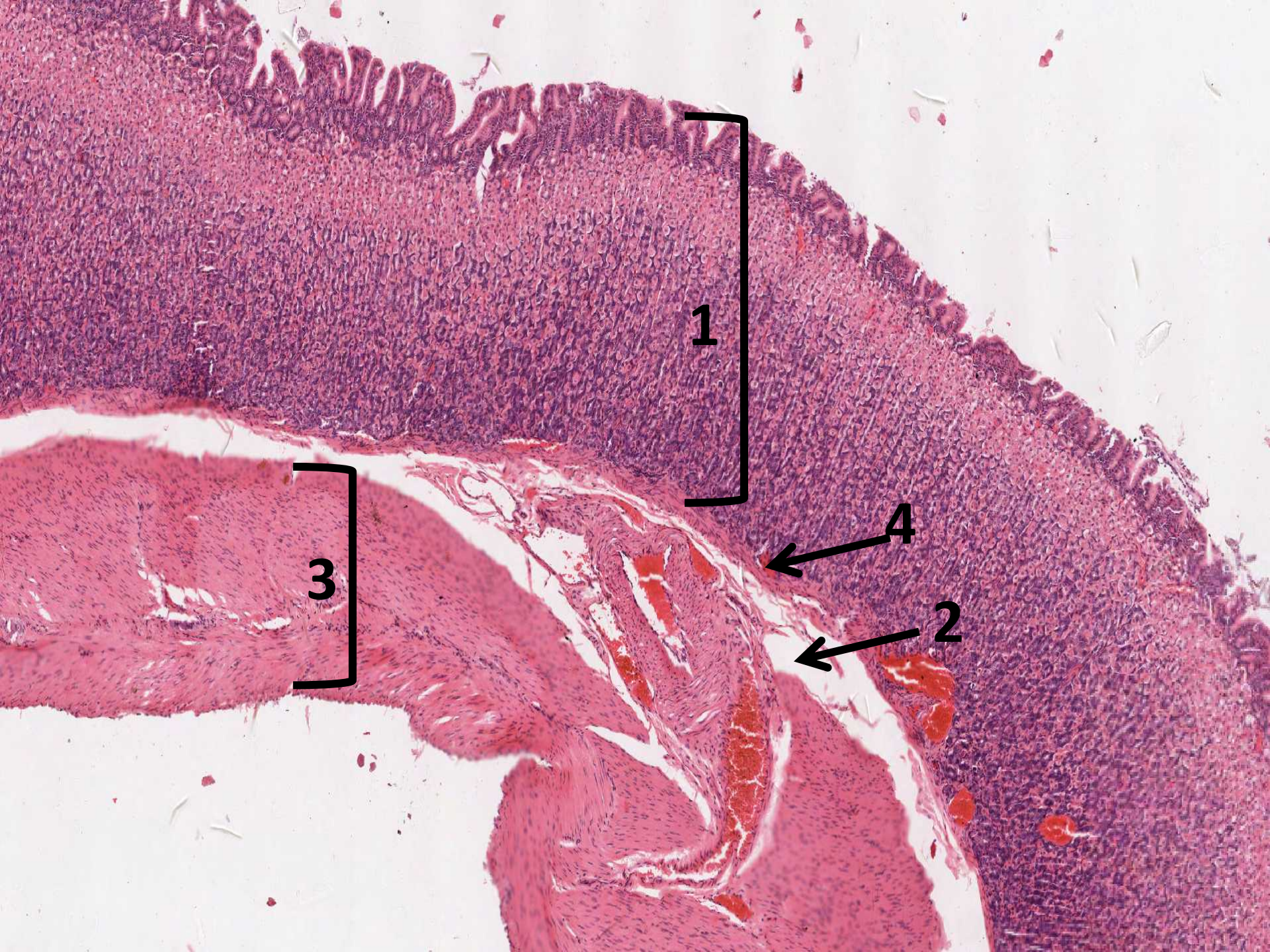
**Non-Keratinized Stratified Squamous
Epithelium.**

2-lamina propria

3-Muscularis mucosae

4-submucosa

5-Muscularis externa



1

3

4

2

Fundus

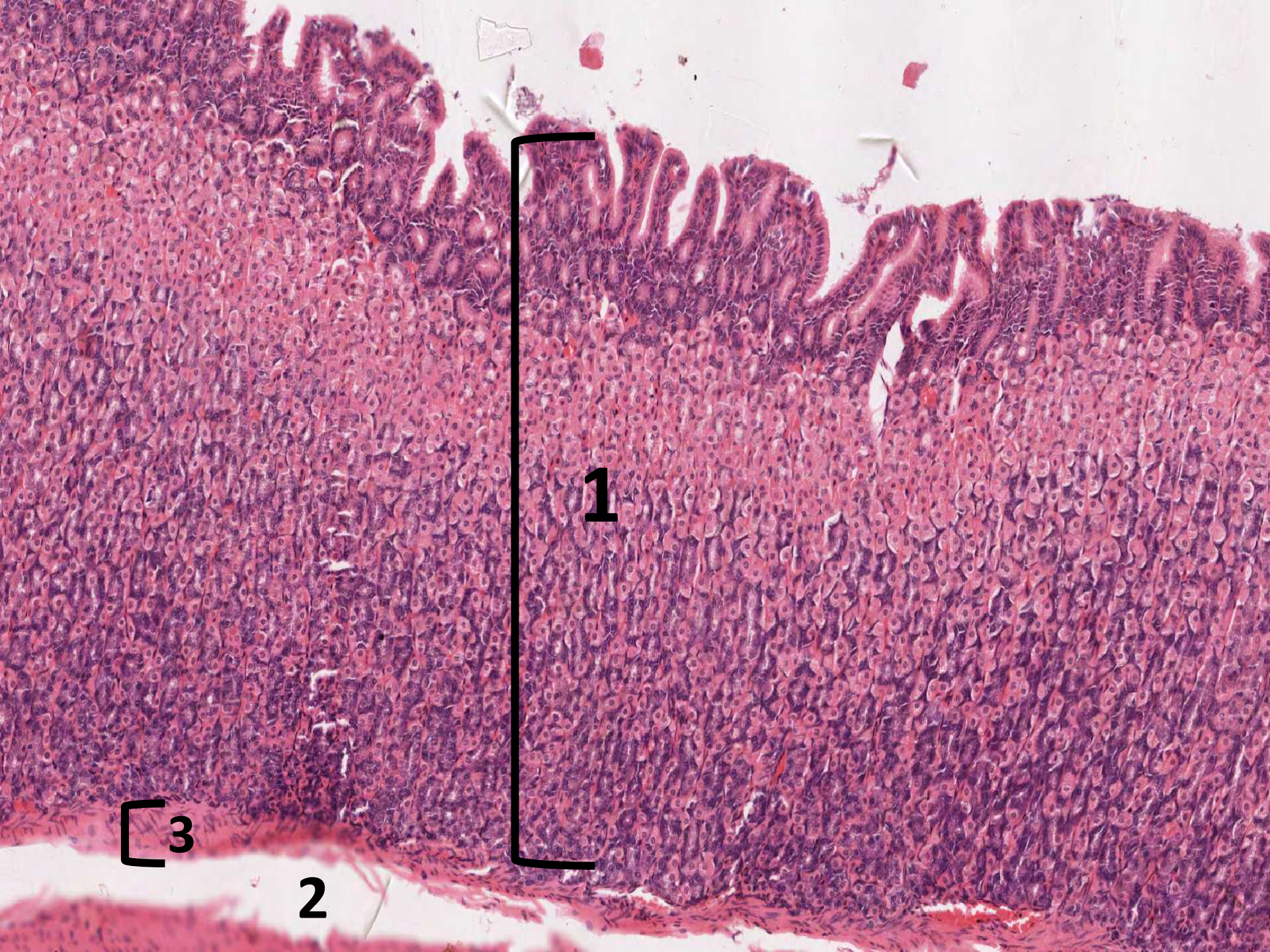
The surface epithelium is simple columnar mucus-secreting cells.

1- mucosa:modify to form short fundic glands

2-Submucosa

3-Muscularis Externa

4-Muscularis mucosae



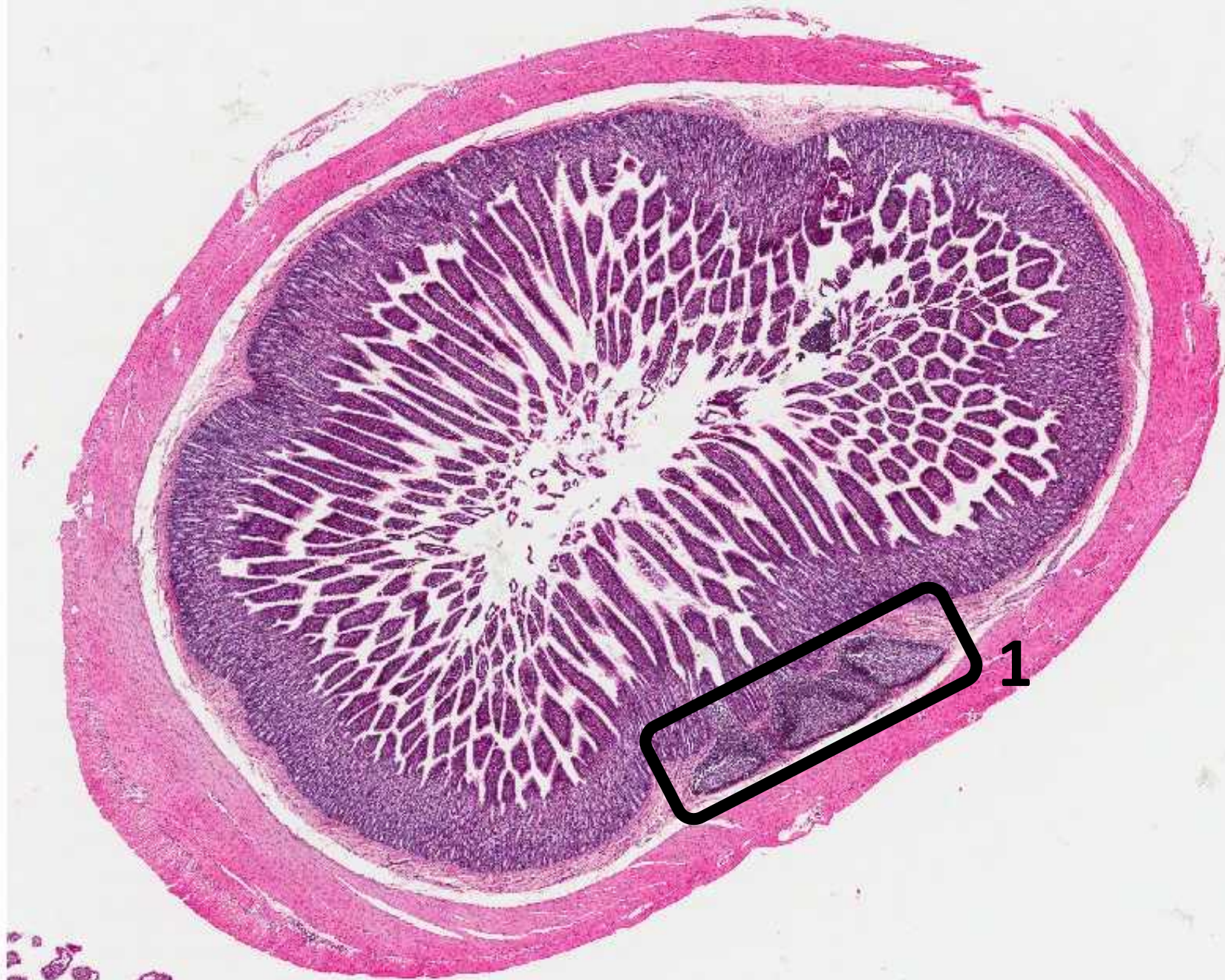
Fundus

- The surface epithelium is simple columnar mucus-secreting cells.

1-mucosa: modify to form short fundic glands

2-Submucosa

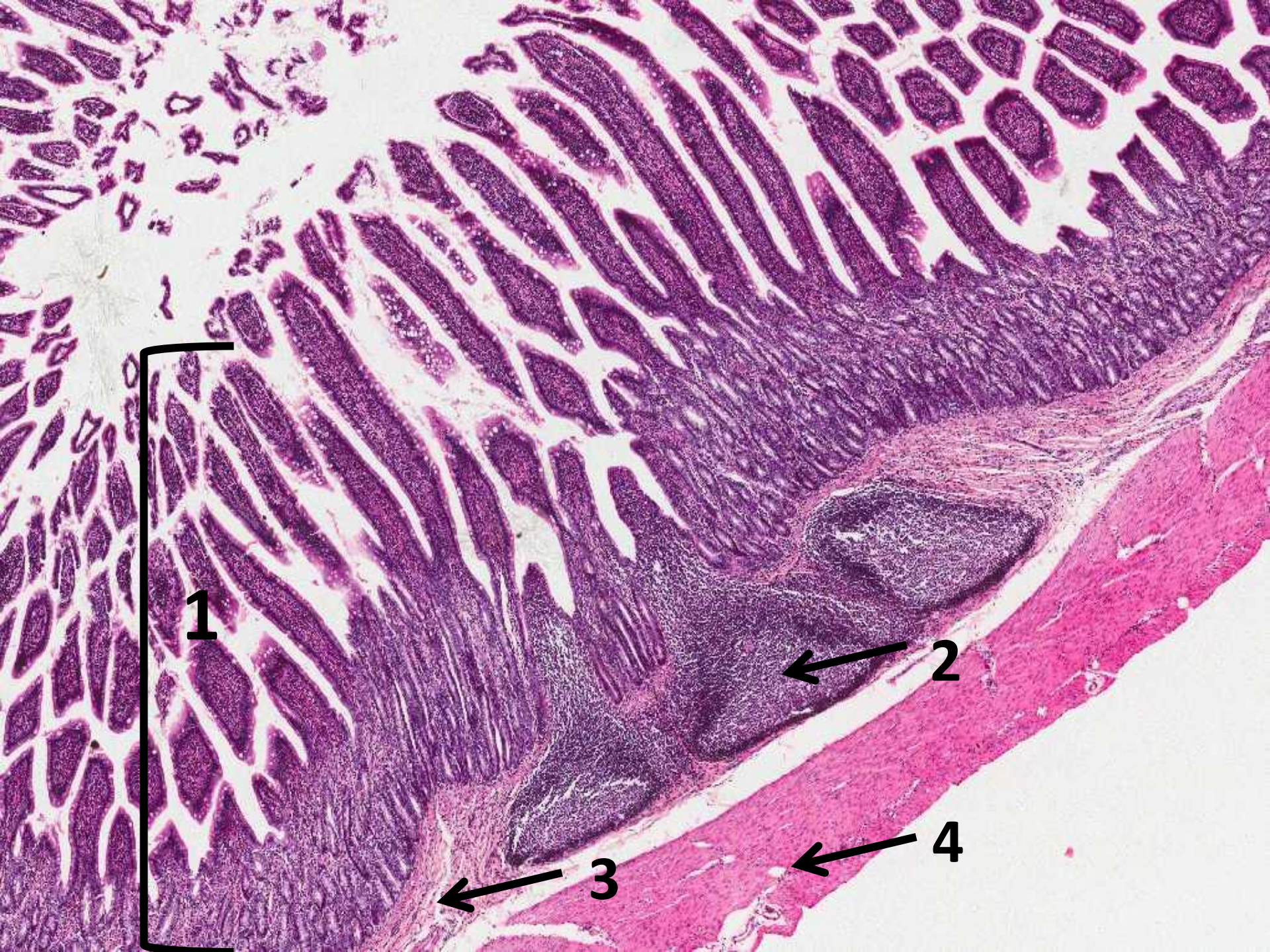
3-Muscularis mucosae



Ileum

simple columnar epithelium with numerous goblet cells.

1-Peyer's patches



Ileum

simple columnar epithelium with numerous goblet cells.

1-mucosa

2-Peyer's patches

3-Submucosa

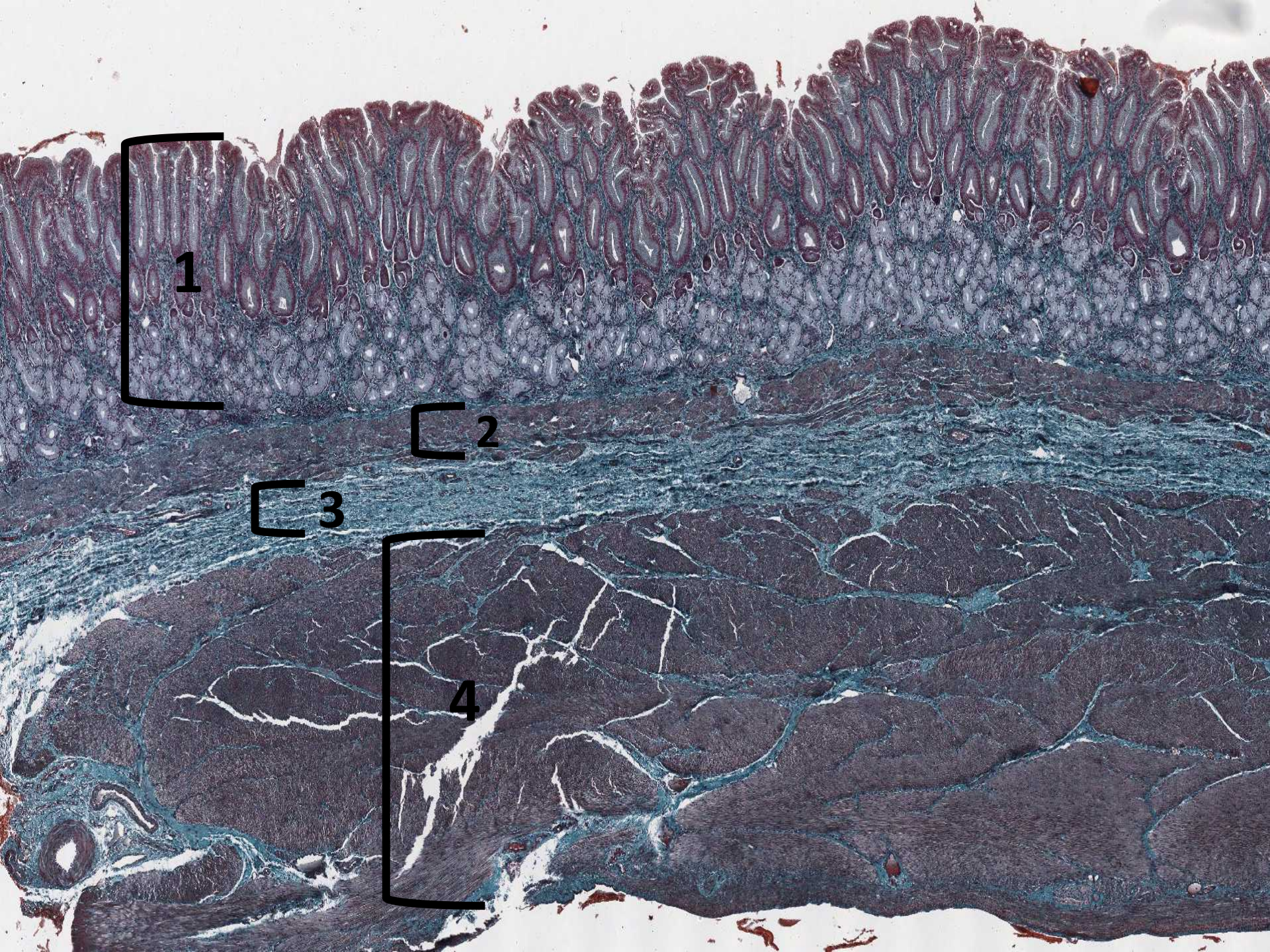
4-Muscularis externa.



Ileum

- **simple columnar epithelium with numerous goblet cells.**

1-Peyer's patches



Pylorus

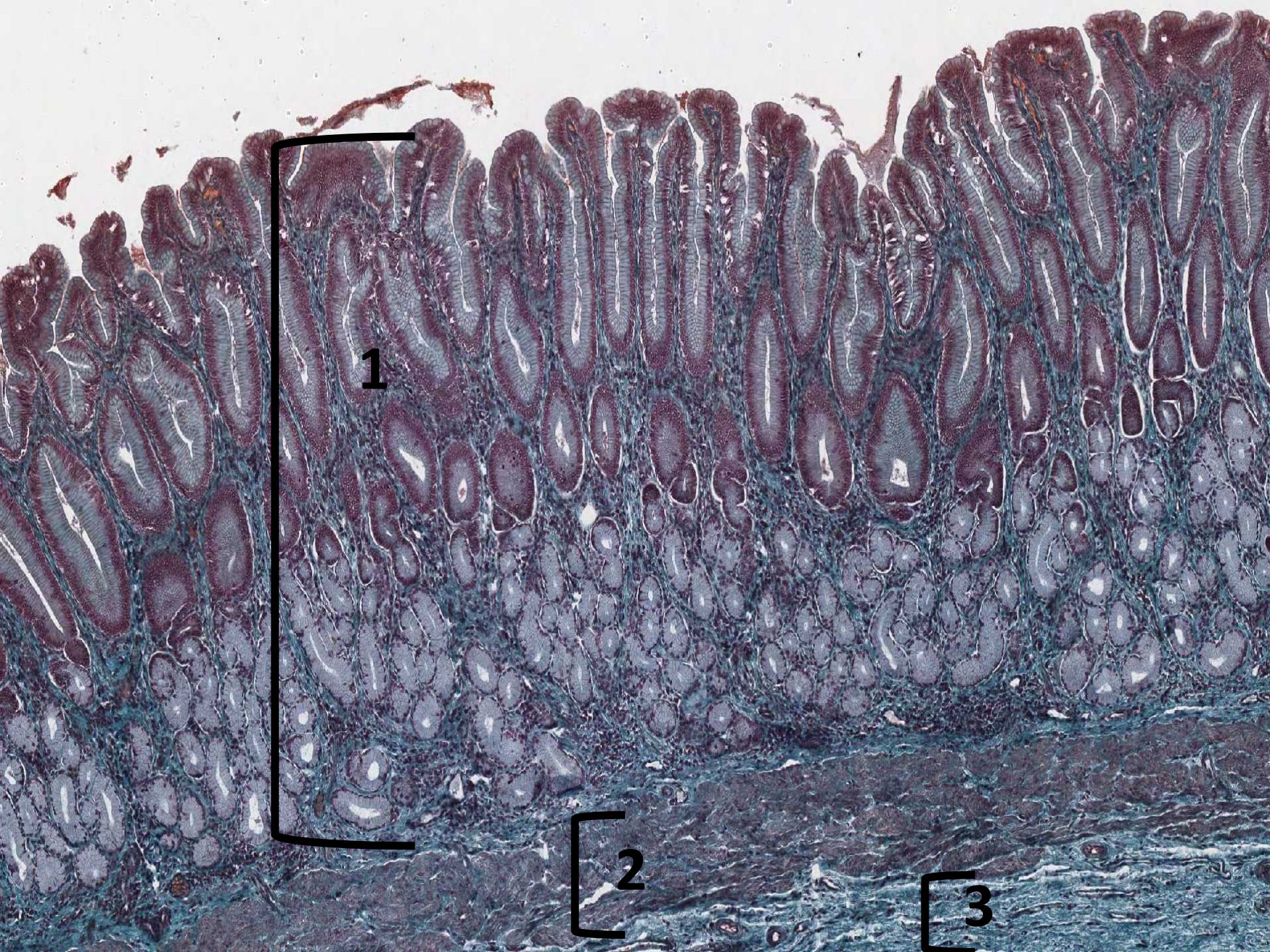
1-mucosa :The surface epithelium is simple columnar mucus-secreting cells.

modify to form long pits of pyloric glands.

2-Muscularis mucosae

3-Submucosa

4-Muscularis Externa



Pylorus

1-mucosa : The surface epithelium is simple columnar mucus-secreting cells. modify to form long pits of pyloric glands.

2-Muscularis mucosae

3-Submucosa

GOOD LUCK

