

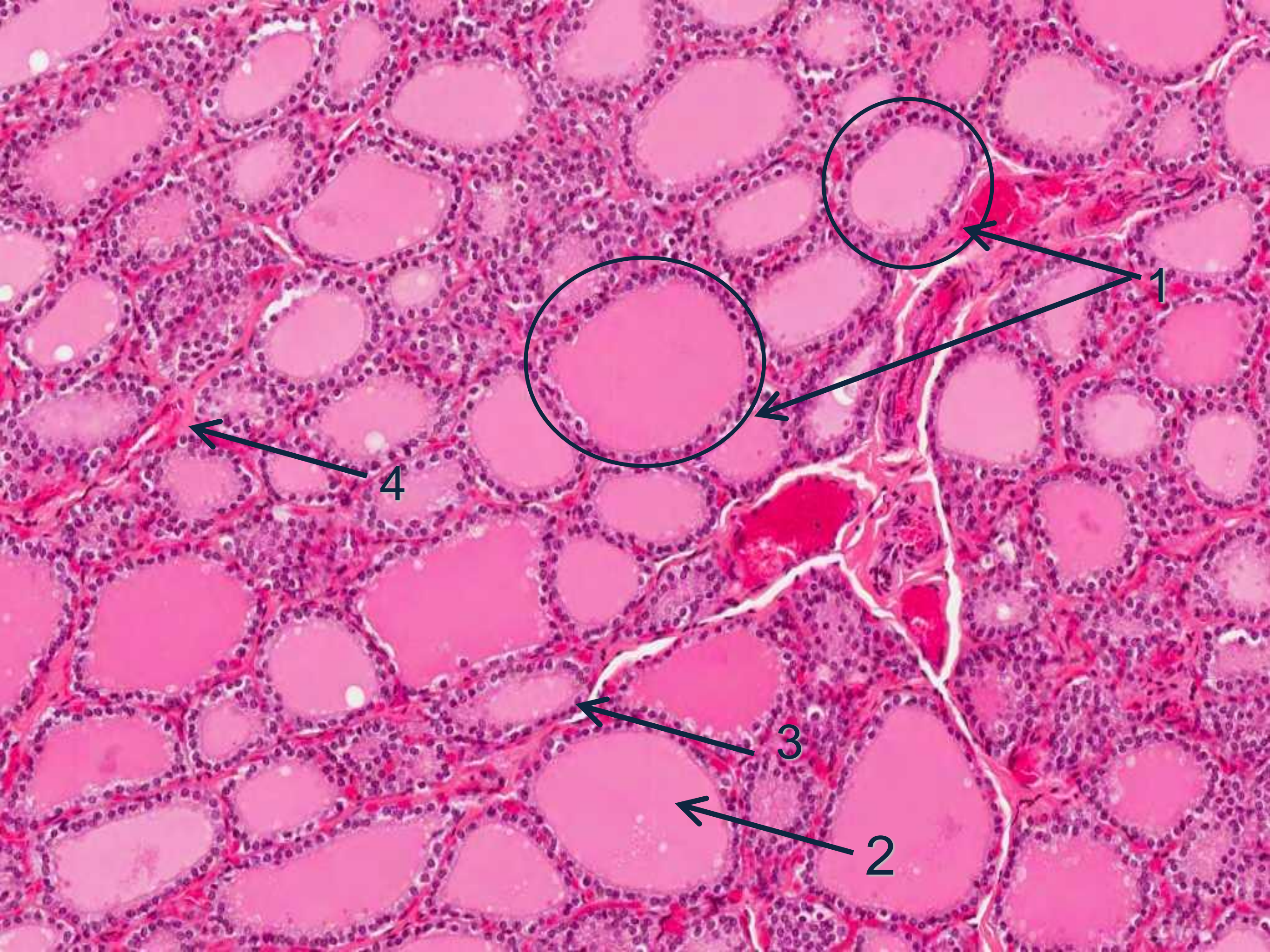
# HISTOLOGY OF ENDOCRINE BLOCK

430 HISTOLOGY TEAM

RAWAN ALSULTAN

WAAD ALWGAIT







# **Identify : Thyroid Gland**

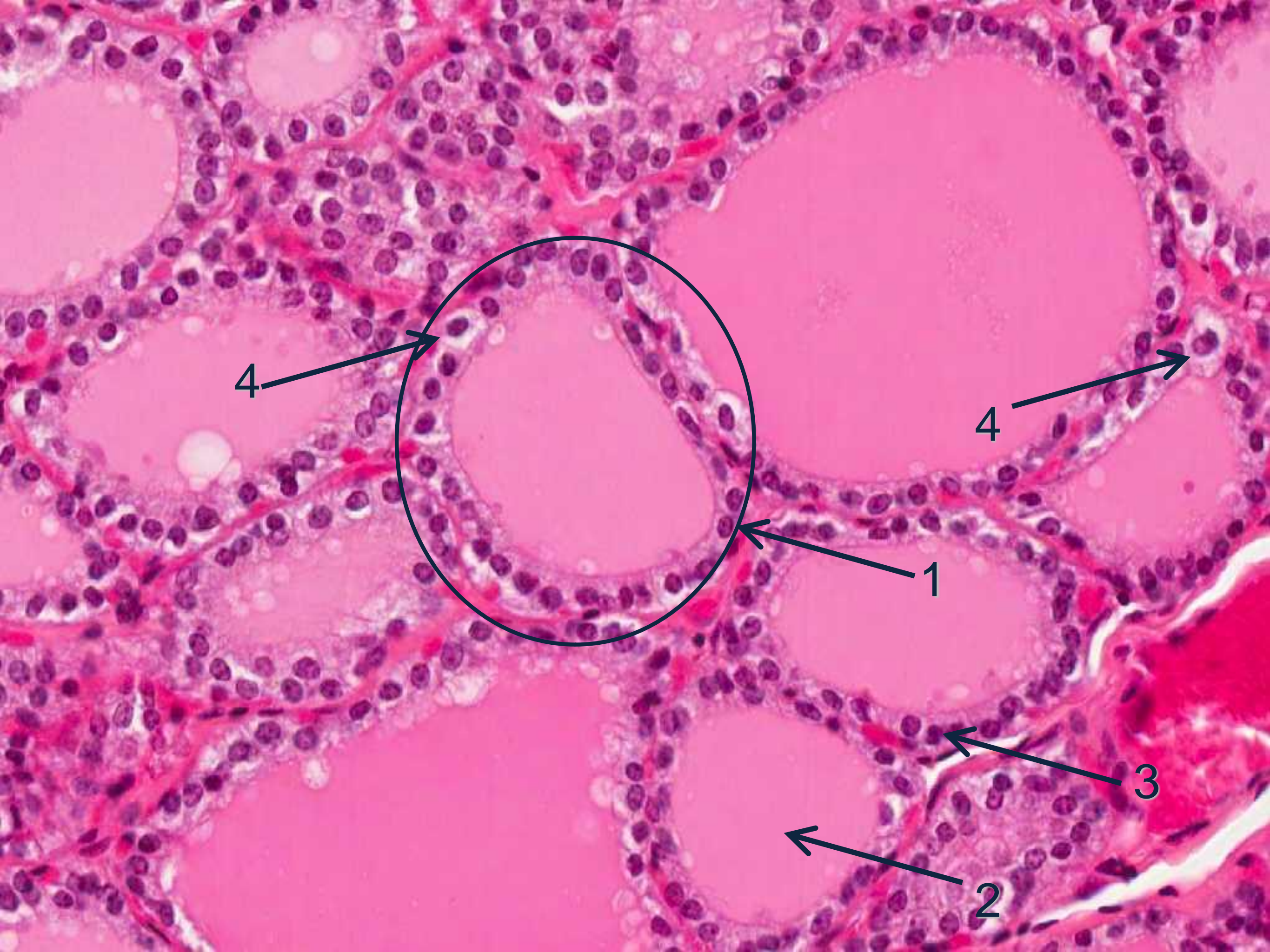
1-thyroid follicles

2-colloid

3-follicular epithelium cells  
(simple cuboidal epithelium)

4-loose connective tissue







# Identify : Thyroid Gland

1-thyroid follicles

2-colloid

3-follicular epithelium cells

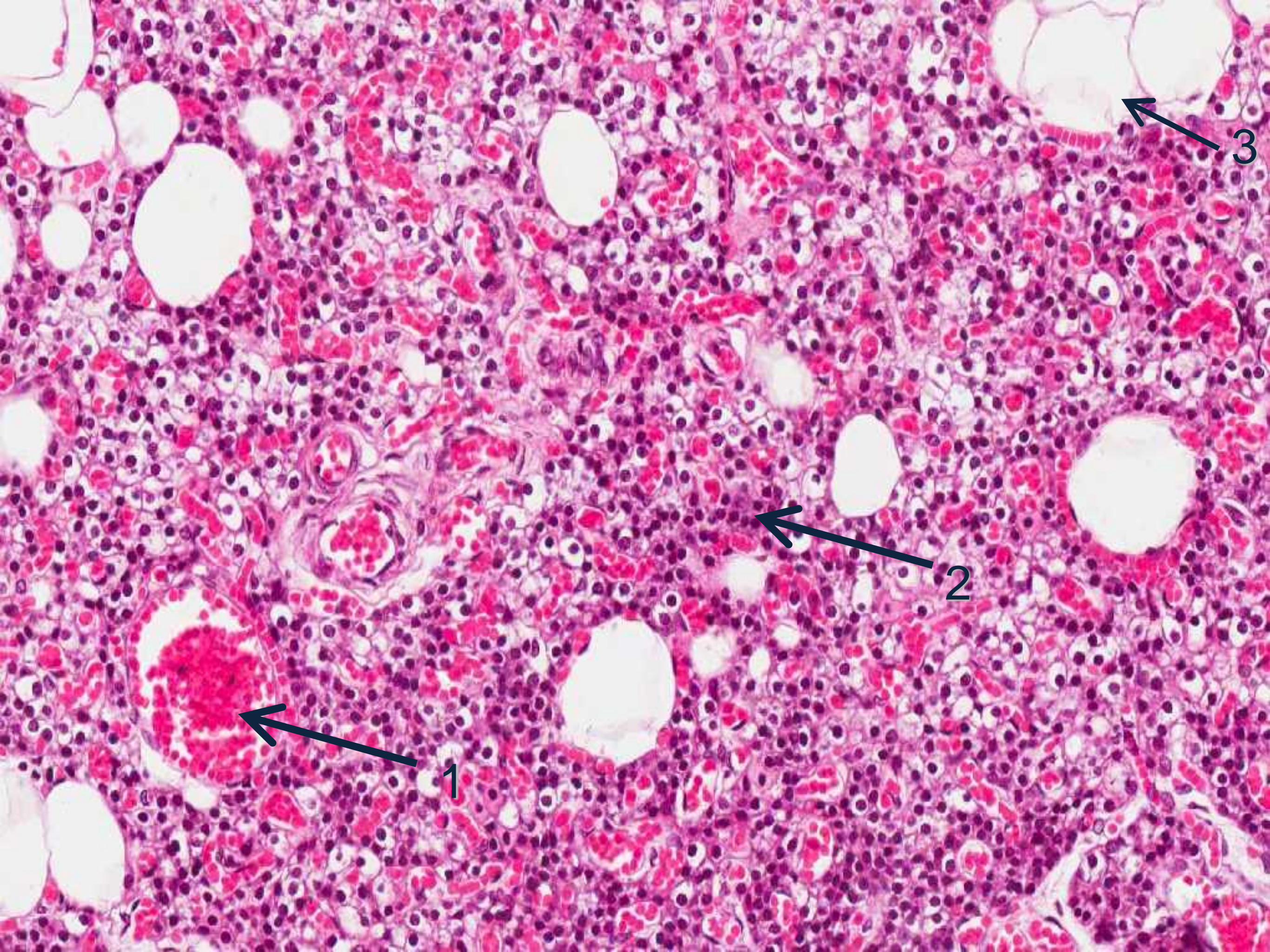
(simple cuboidal epithelium)

4- parafollicular cell

(clear cell - C cell)

(simple cuboidal epithelium)







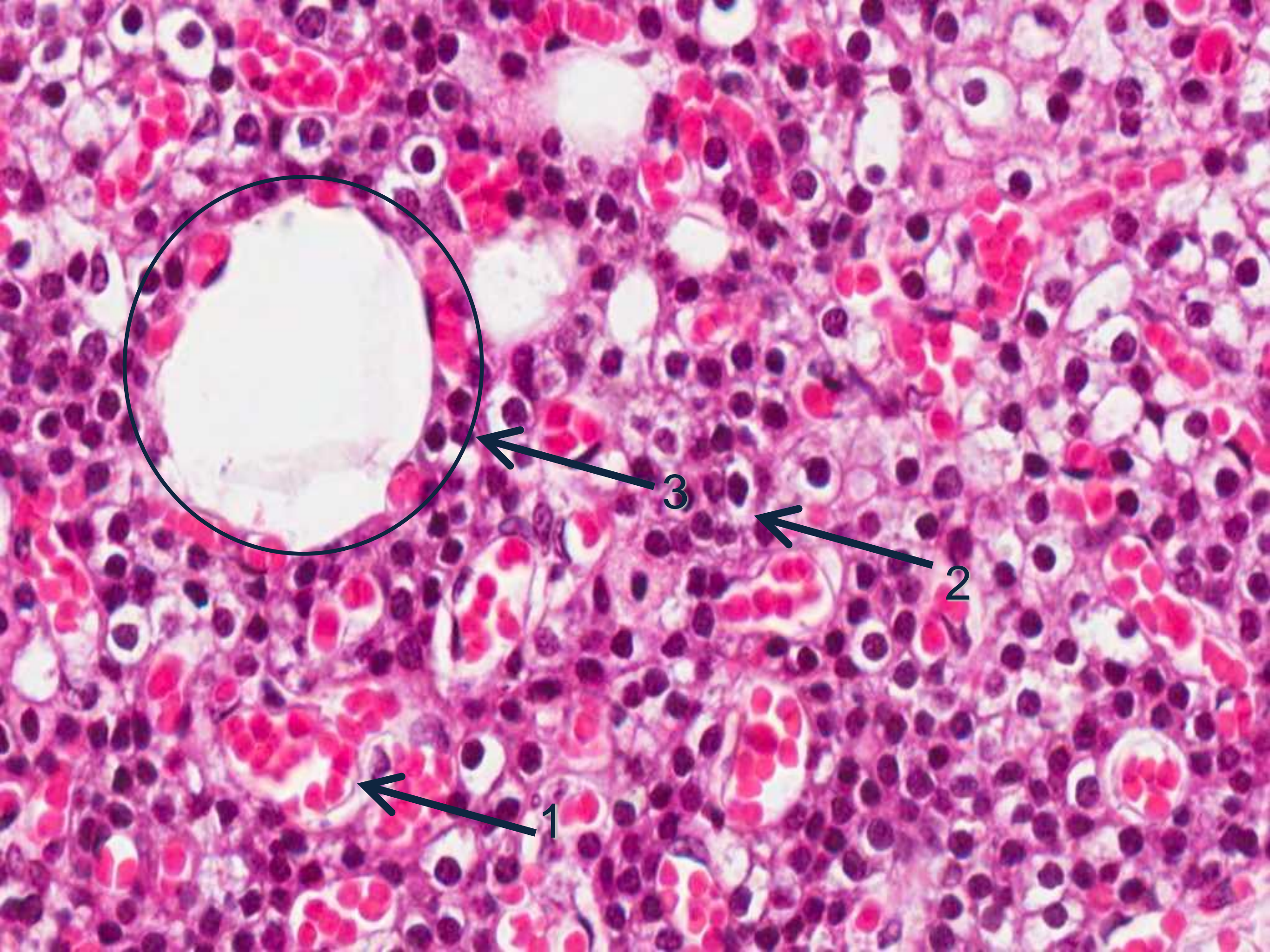
# Identify: Parathyroid Gland

1-blood vessel

2-chief cells of parathyroid

3-adipocytes (fat cells)







# Identify: Parathyroid Gland

1-blood vessel

2-chief cells of parathyroid

3-vein



Know the function of each structure

**follicular epithelium cells:**

Function: Synthesis of thyroid hormones (T4 & T3)

**Parafollicular cell (clear cell - C cell):**

Function: Secrete calcitonin

**Chief cells:**

They secrete parathyroid hormone (blood calcium).