

430 HISTOLOGY TEAM

**Histology of Reproductive Block
(Male Genital)**

WAAD ALWGAIT

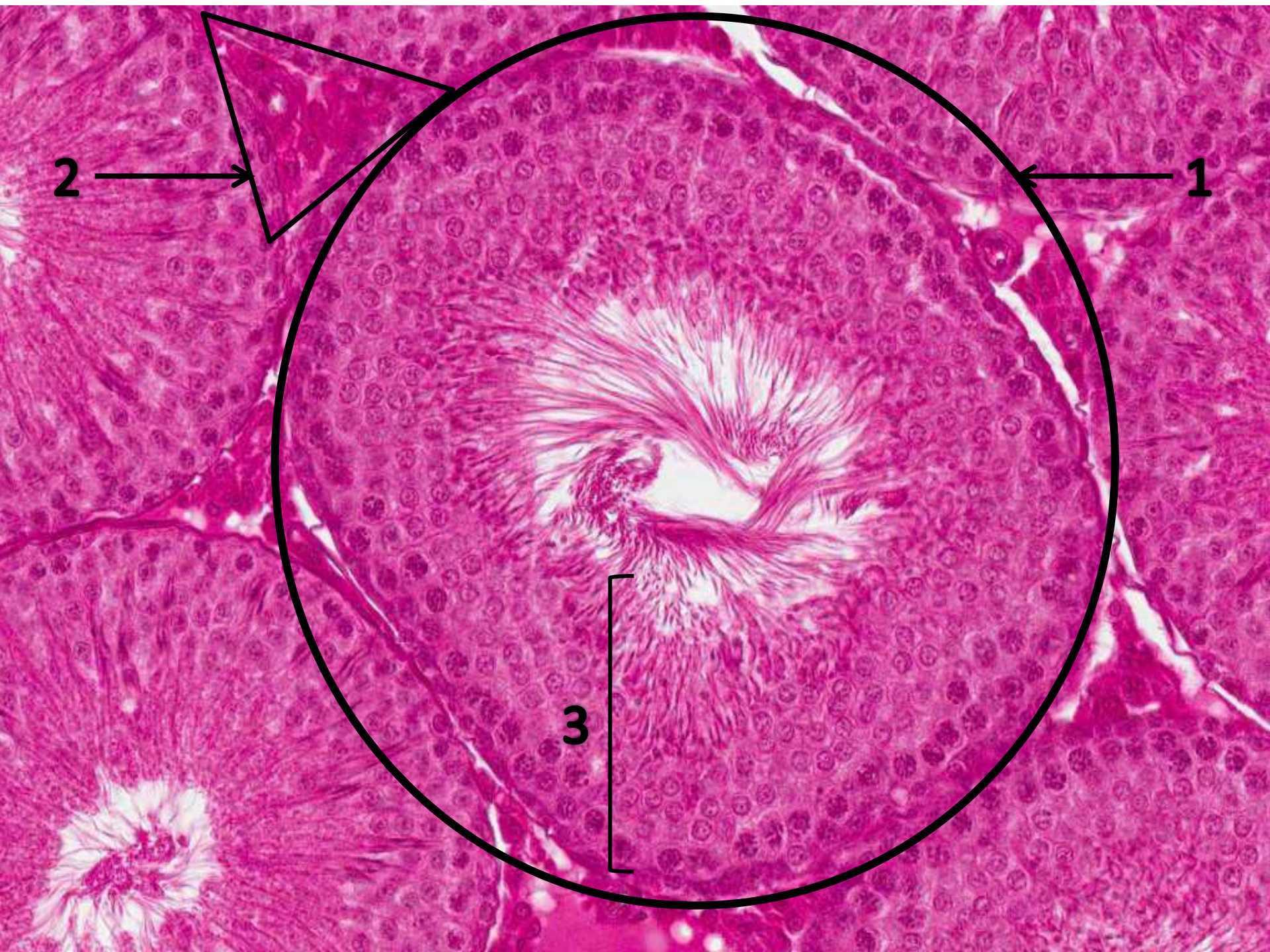
RAWAN ALSULTAN



Testis

1-Seminiferous tubules

Tubule is lined with stratified epithelium.



Testis

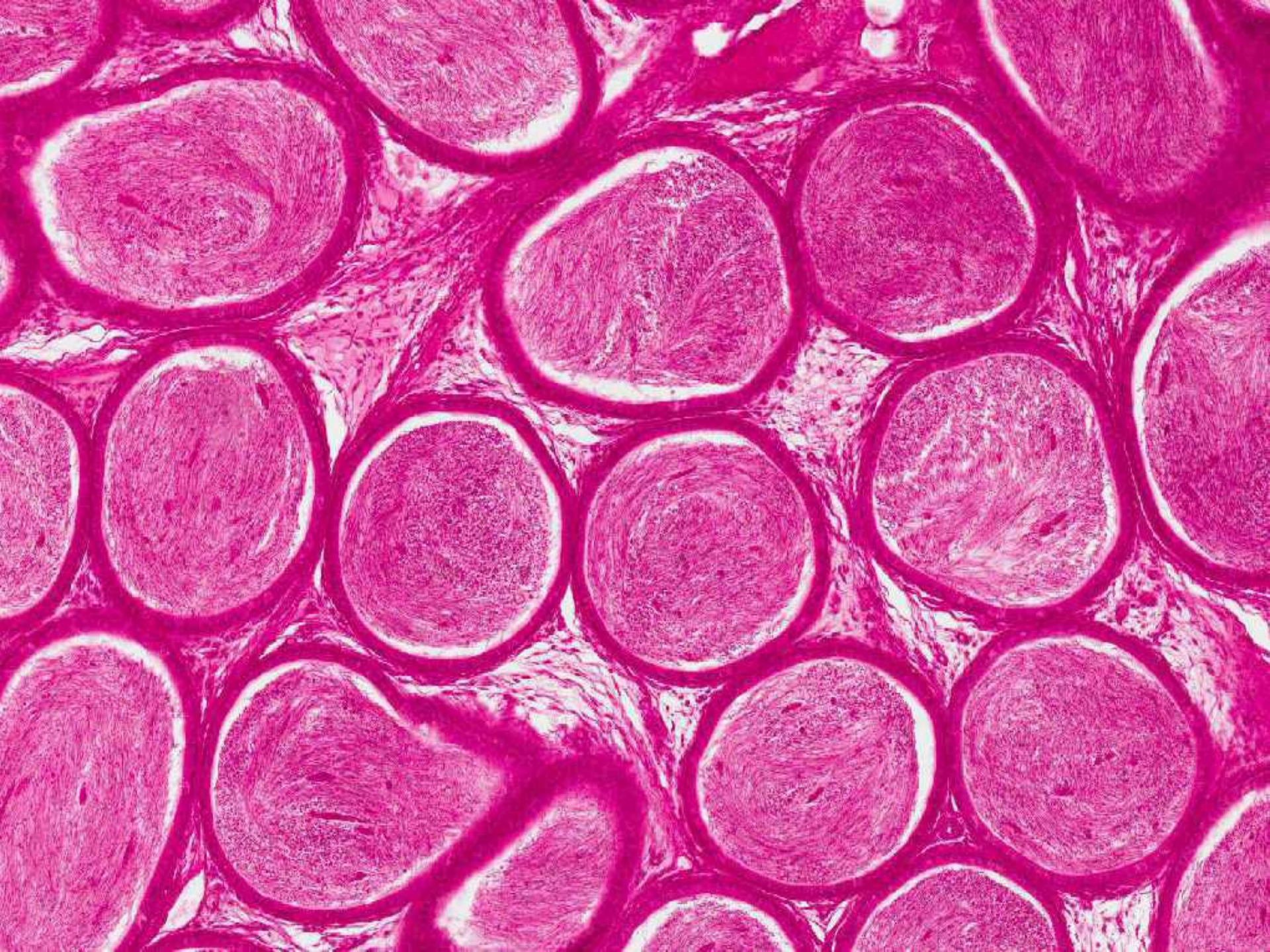
1-Seminiferous tubules

Tubule is lined with stratified epithelium.

(3- Germinal epithelium)

2-Interstitial connective tissue

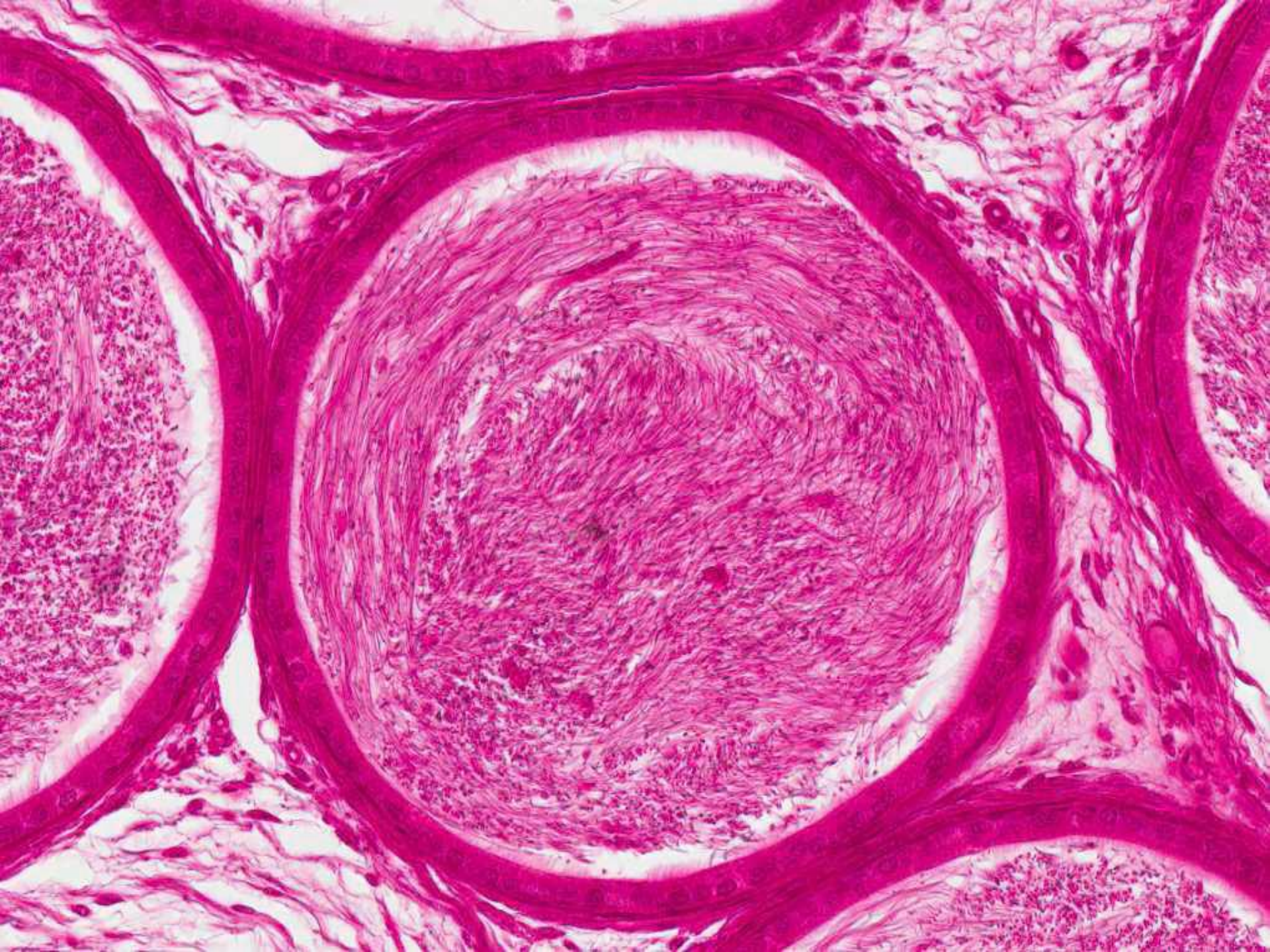
Interstitial cells of Leydig



Epididymis

Epithelium:

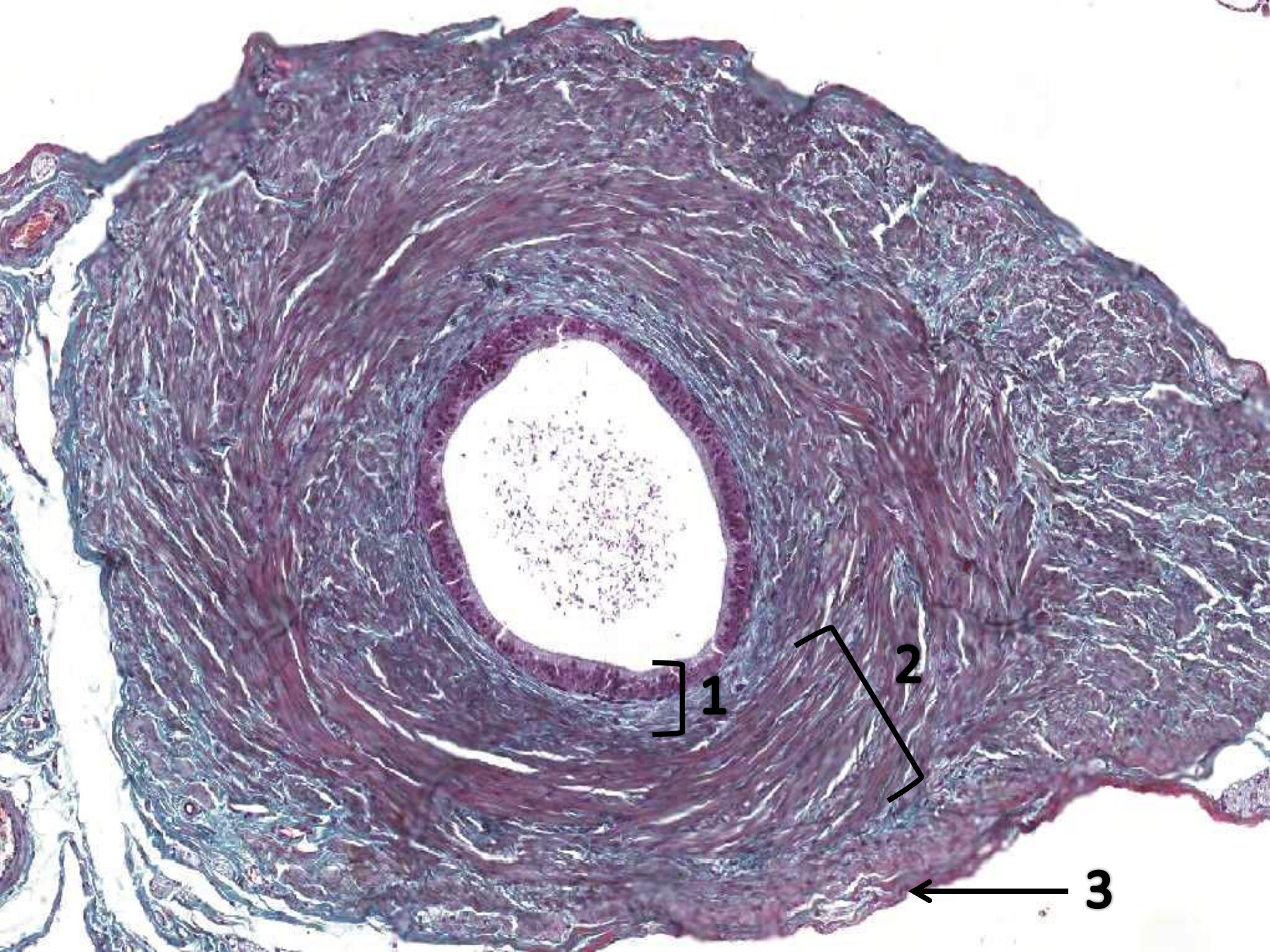
Pseudostratified columnar epithelium with stereocilia.



Epididymis

Epithelium:

Pseudostratified columnar epithelium with stereocilia.



Vas deferens

1- Mucosa :

Epithelium: Pseudostratified columnar epithelium with stereocilia (immotile cilia).
lamina propria: Loose C.T.

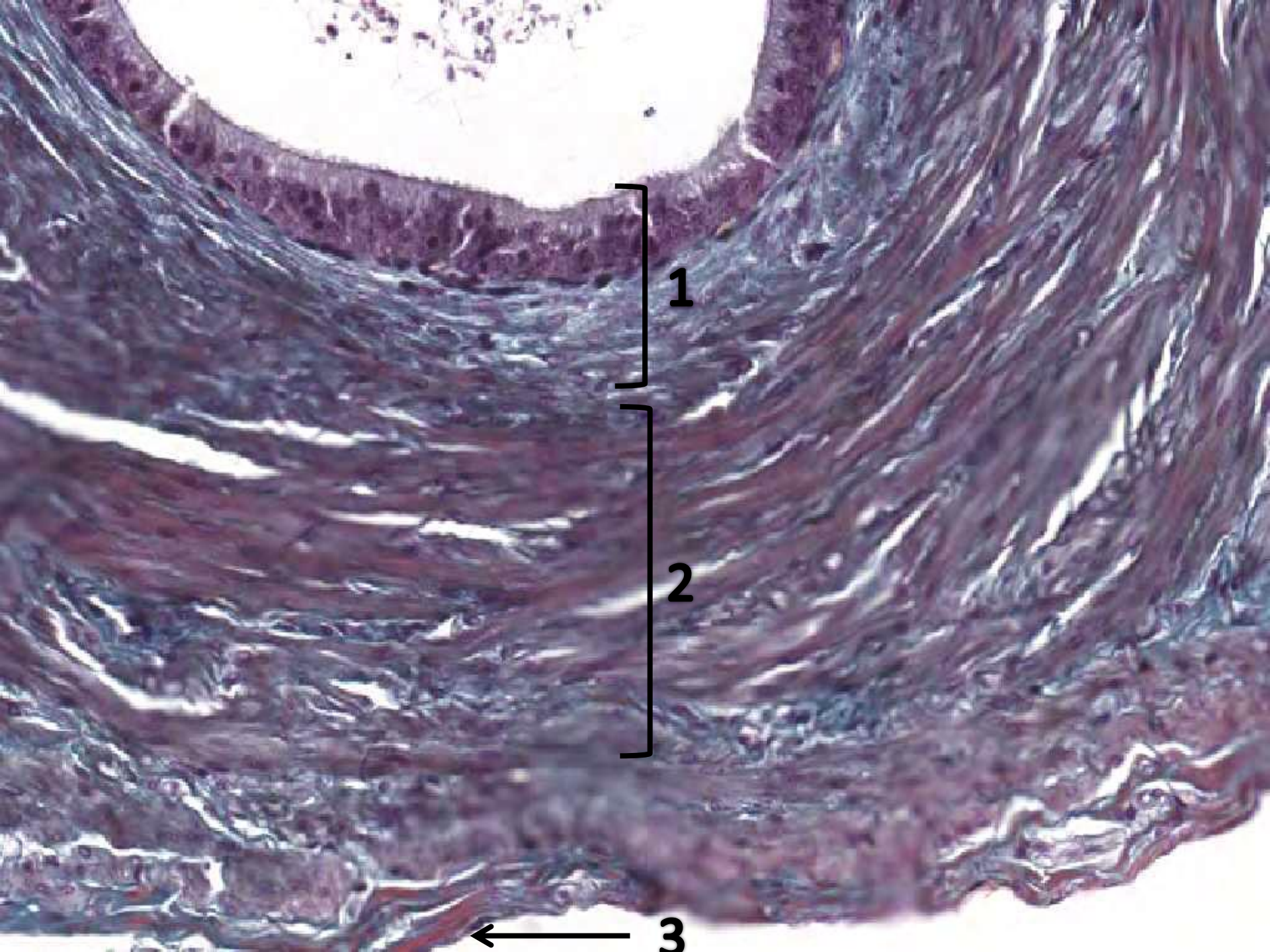
2- Thick smooth muscle coat (3 layers):

Inner longitudinal muscle layer.

Middle circular

Outer longitudinal

3- Adventitia



Vas deferens

1- Mucosa :

Epithelium: Pseudostratified columnar epithelium with stereocilia (immotile cilia).

lamina propria: Loose C.T.

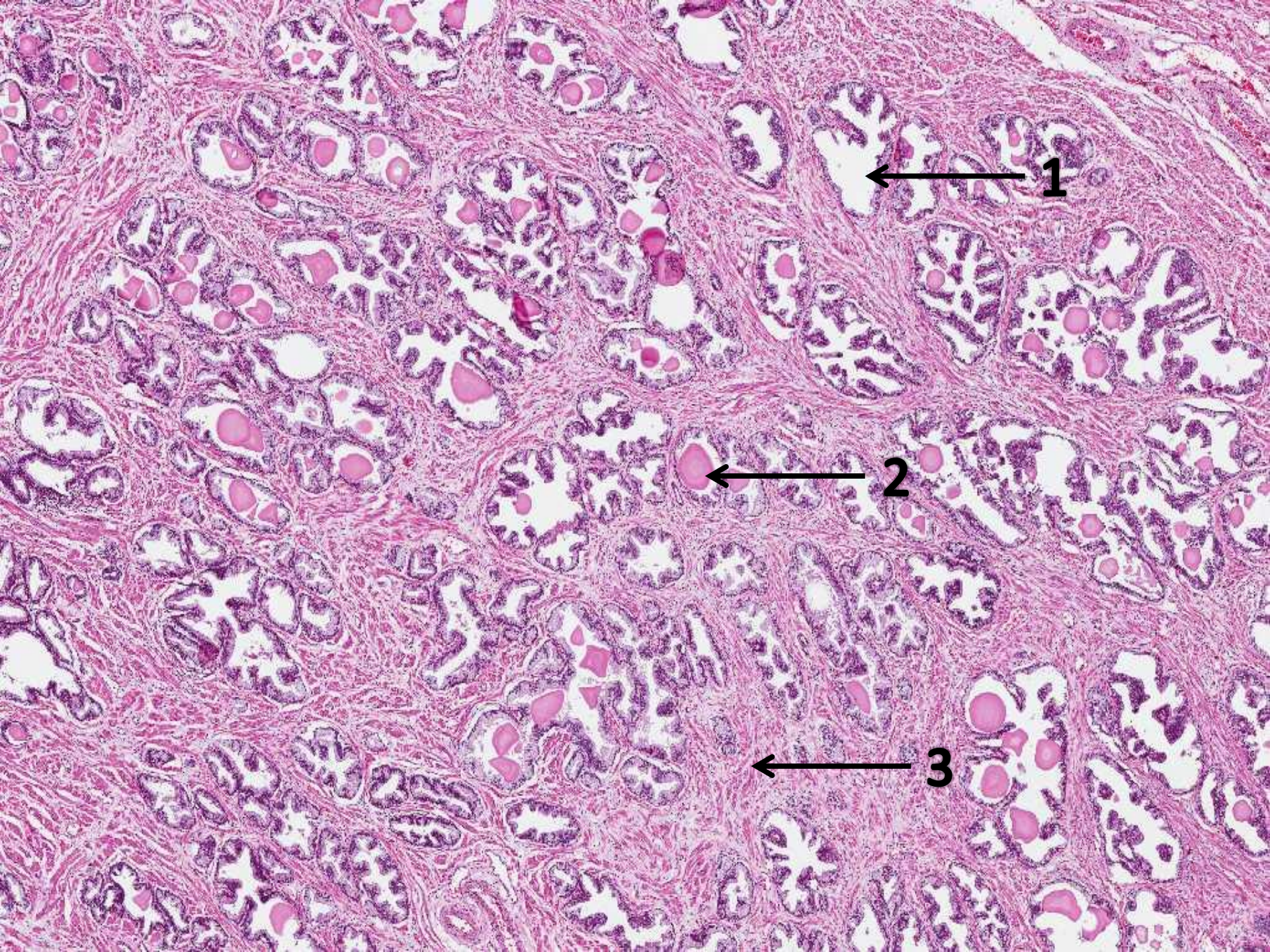
2- Thick smooth muscle coat (3 layers):

Inner longitudinal muscle layer.

Middle circular

Outer longitudinal

3- Adventitia



← 1

← 2

← 3

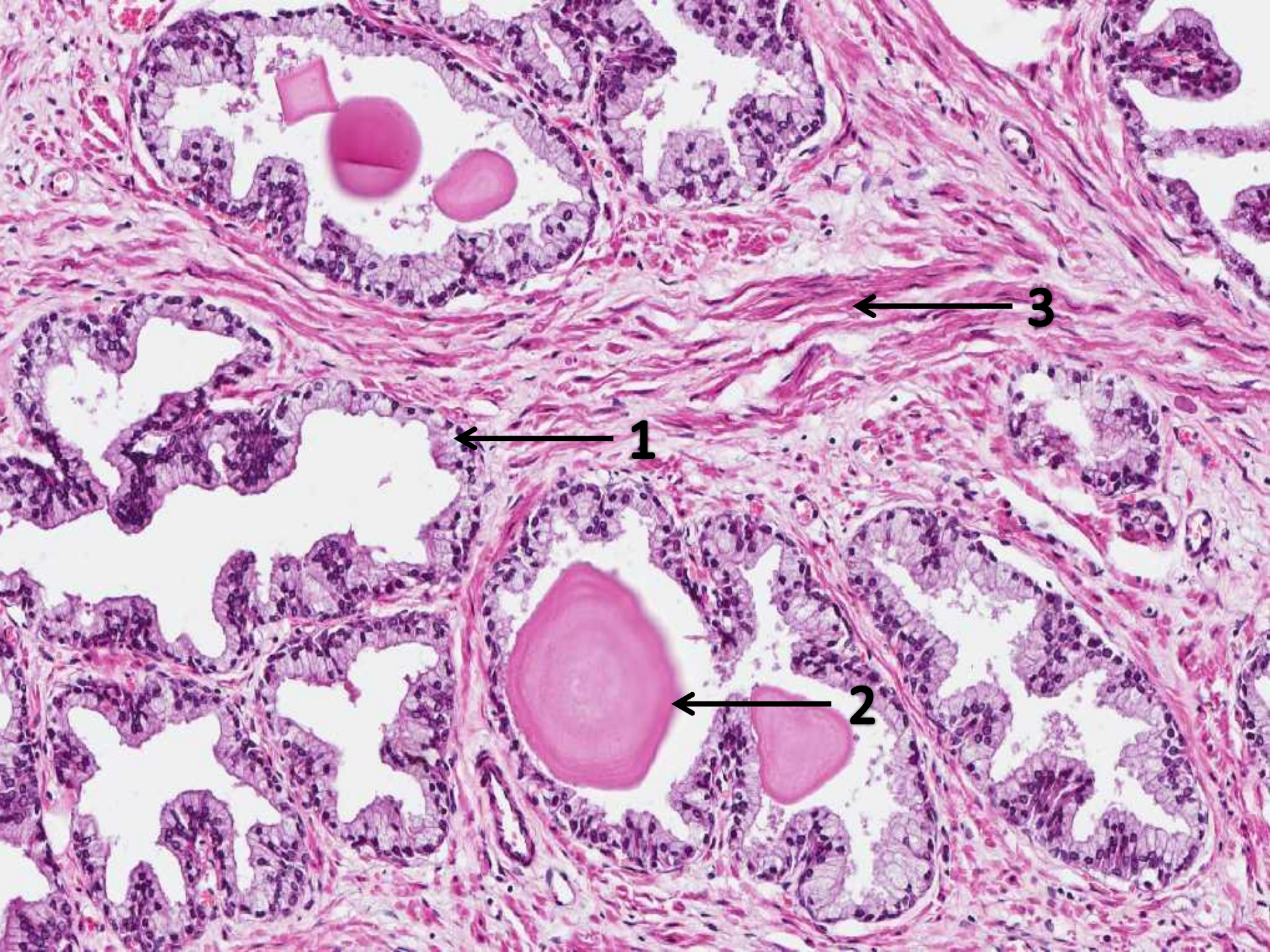
Prostate

1- Prostatic acini:

- **Lining:** Simple columnar or Pseudostratified columnar epithelium.

2-Corpora amylacea

3-Connective tissue containing smooth muscle fibers.



Prostate

1- Prostatic acini:

- **Lining:** Simple columnar or Pseudostratified columnar epithelium.

2-Corpora amylacea

3-Connective tissue containing smooth muscle fibers.

Good Luck

APPROVED BY : Dr.Raeesa