



## Leaders

Tamader Aloofy

Mohammed Aldaheri

## Members

Ibtihal Al-Amer

Nasser Alsaleh

Raghda Al Amri

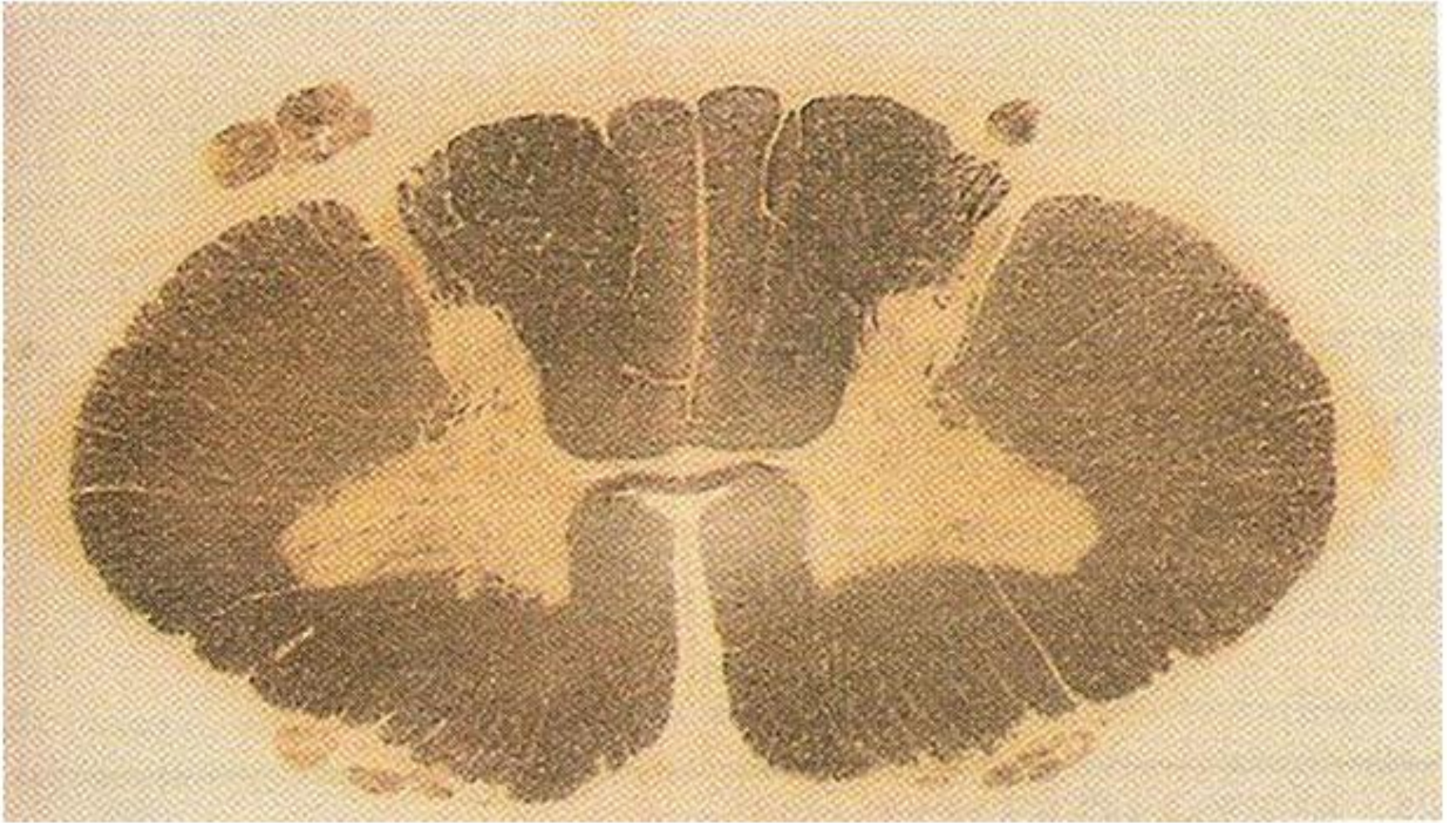
Mosaed Aldekhayel

Walaa Al Shehri

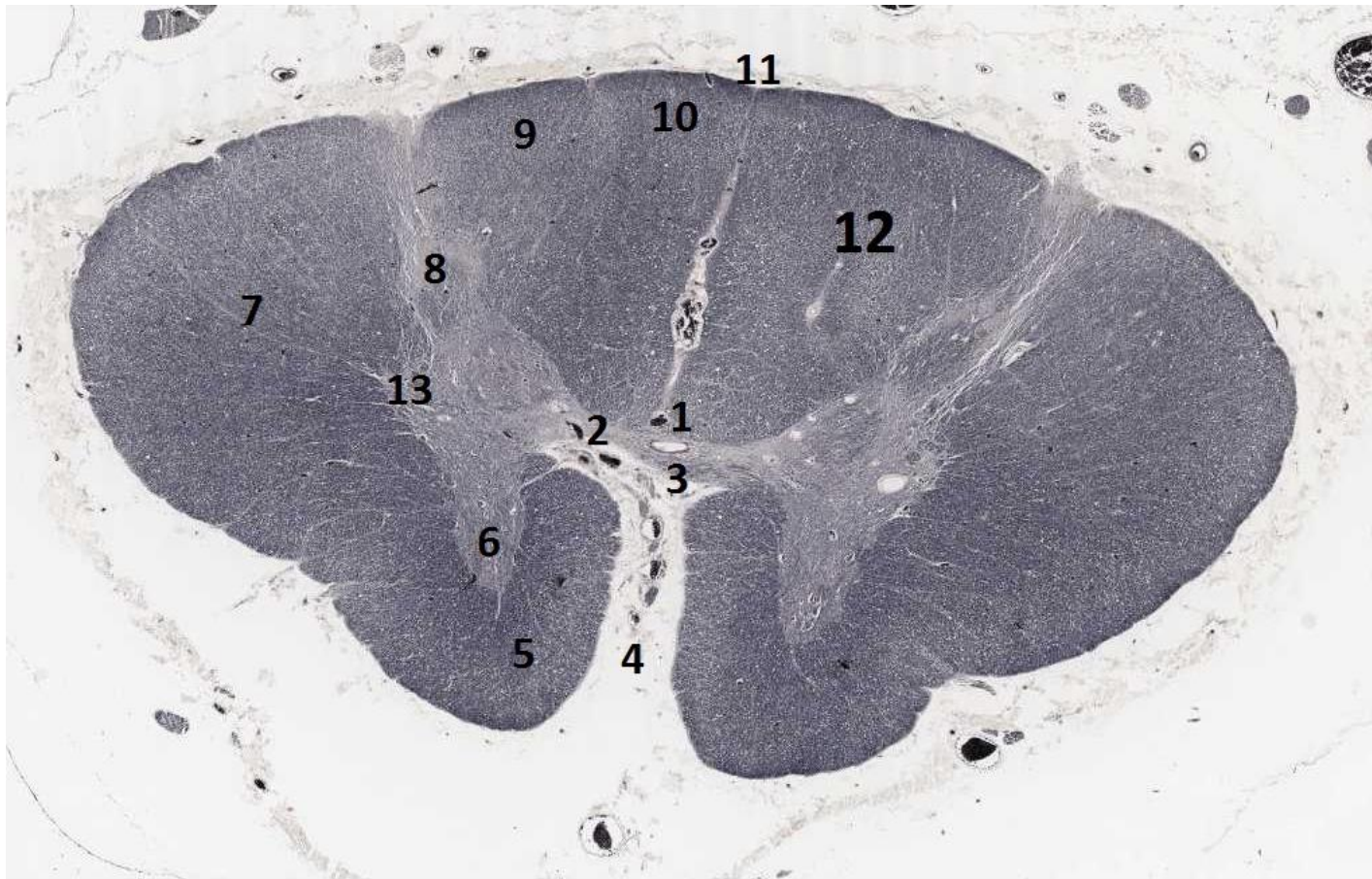
Abeer Al-Suwailem

Nouf Aboalsamh



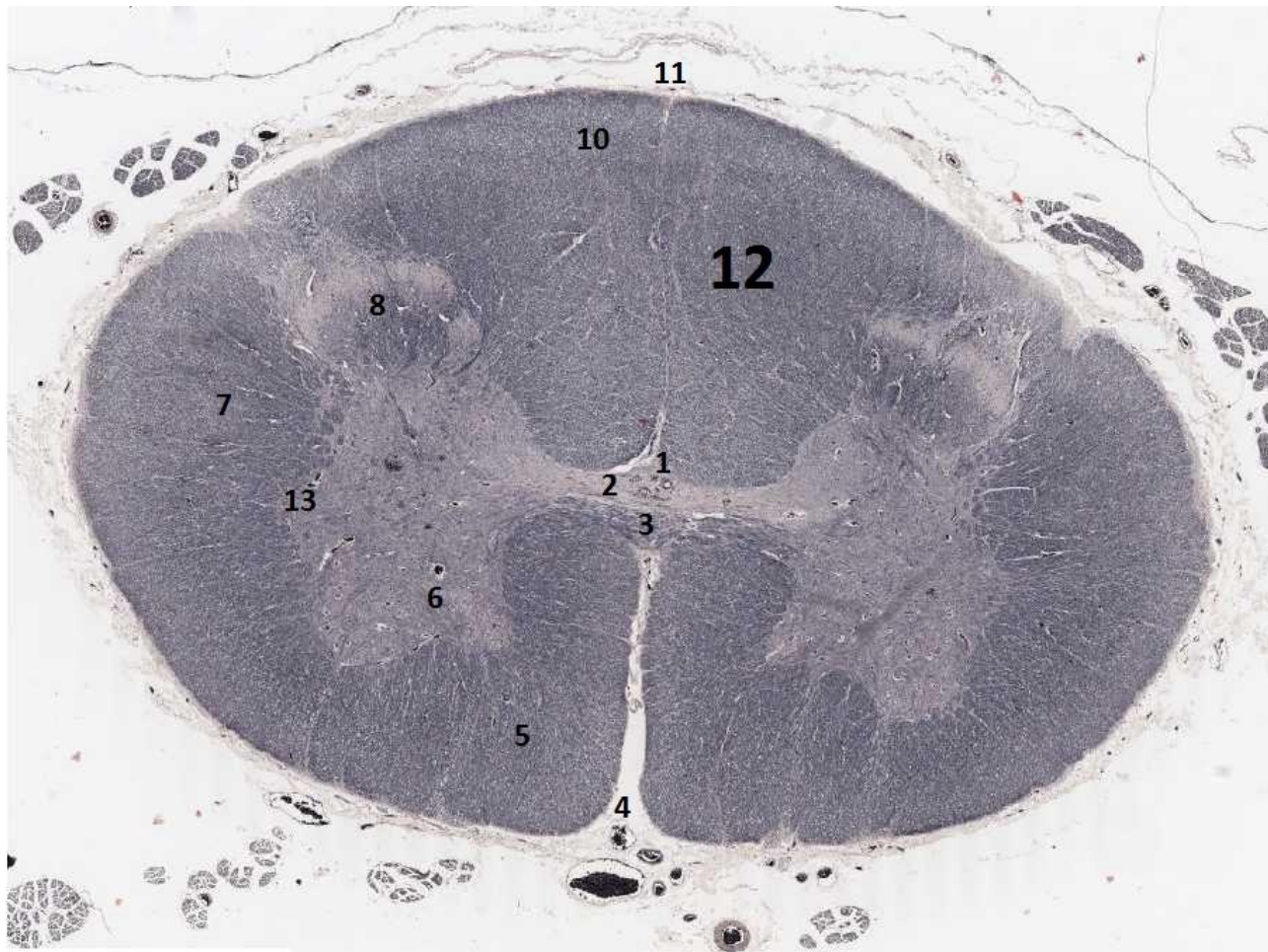


**Cervical Spinal Cord**



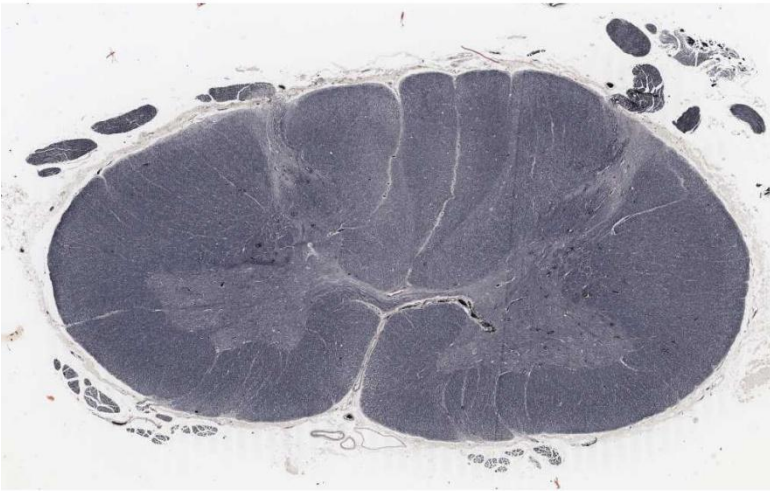
- 1- central canal
- 2- gray commissure
- 3- anterior white commissure
- 4- ventral median fissure
- 5- anterior white column
- 6- anterior gray horn
- 7- lateral white column
- 8- posterior gray horn
- 9- cuneate tract
- 10- gracile tract
- 11- dorsal median sulcus
- 12- posterior white column
- 13- lateral gray horn

## Thoracic Spinal Cord



- 1- central canal
- 2- gray commissure
- 3- anterior white commissure
- 4- ventral median fissure
- 5- anterior white column
- 6- anterior gray horn
- 7- lateral white column
- 8- posterior gray horn
- 9- cuneate tract "not found at this level"
- 10- gracile tract
- 11- dorsal median sulcus
- 12- posterior white column
- 13- lateral gray horn

## Lumbar Spinal Cord



Cervical Spinal Cord



Thoracic Spinal Cord

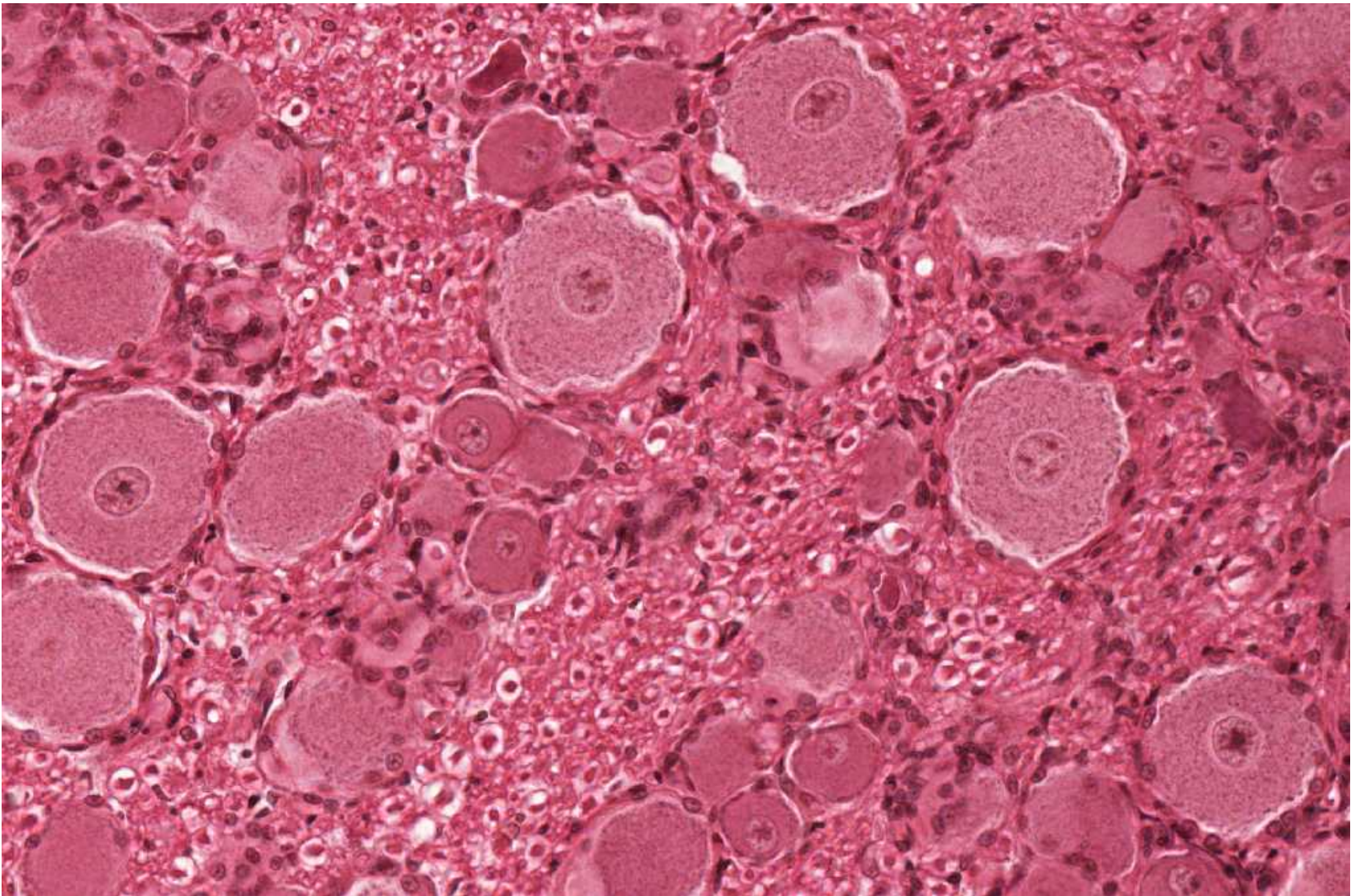


Lumbar Spinal Cord

## How to differentiate between spinal cord segments:



Spinal Segment	Dorsal Horn	Ventral horn	Lateral horn	White matter	Shape
Cervical	Thin	Thick	Not exist	Thick	Oval
Thoracic	Thin	Thin	Exist	Less Thicker	Less oval
Lumbar	Thick	Thick	Exist in (L1,L2)	Thinner	Rounded

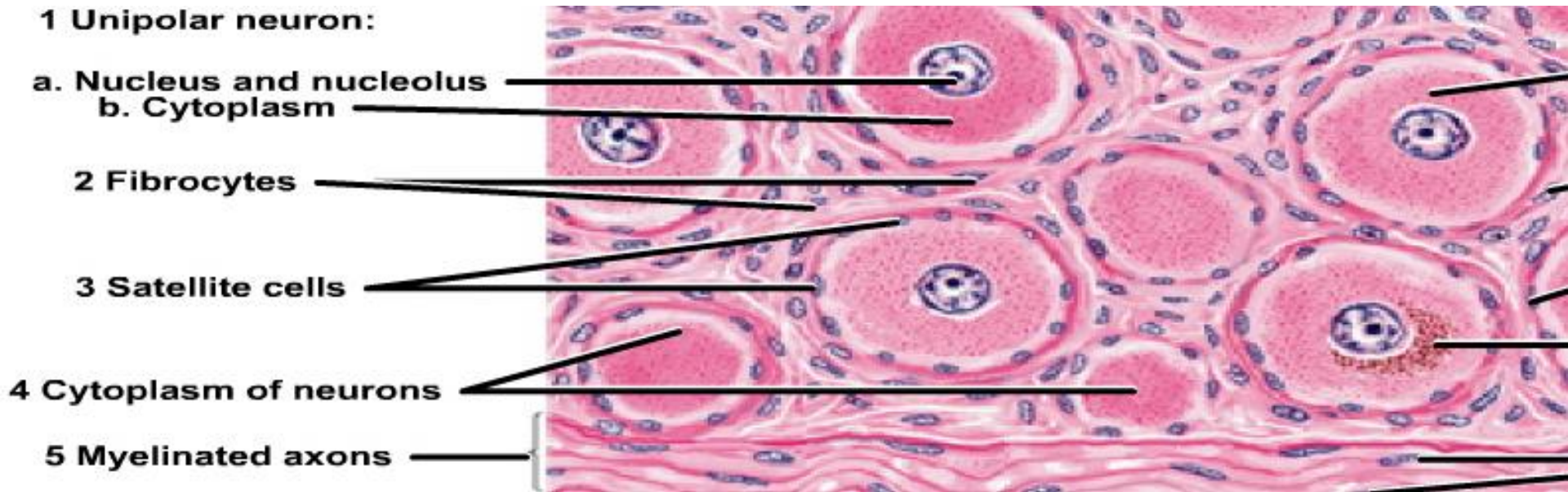


Unipolar neurons (in spinal ganglion)

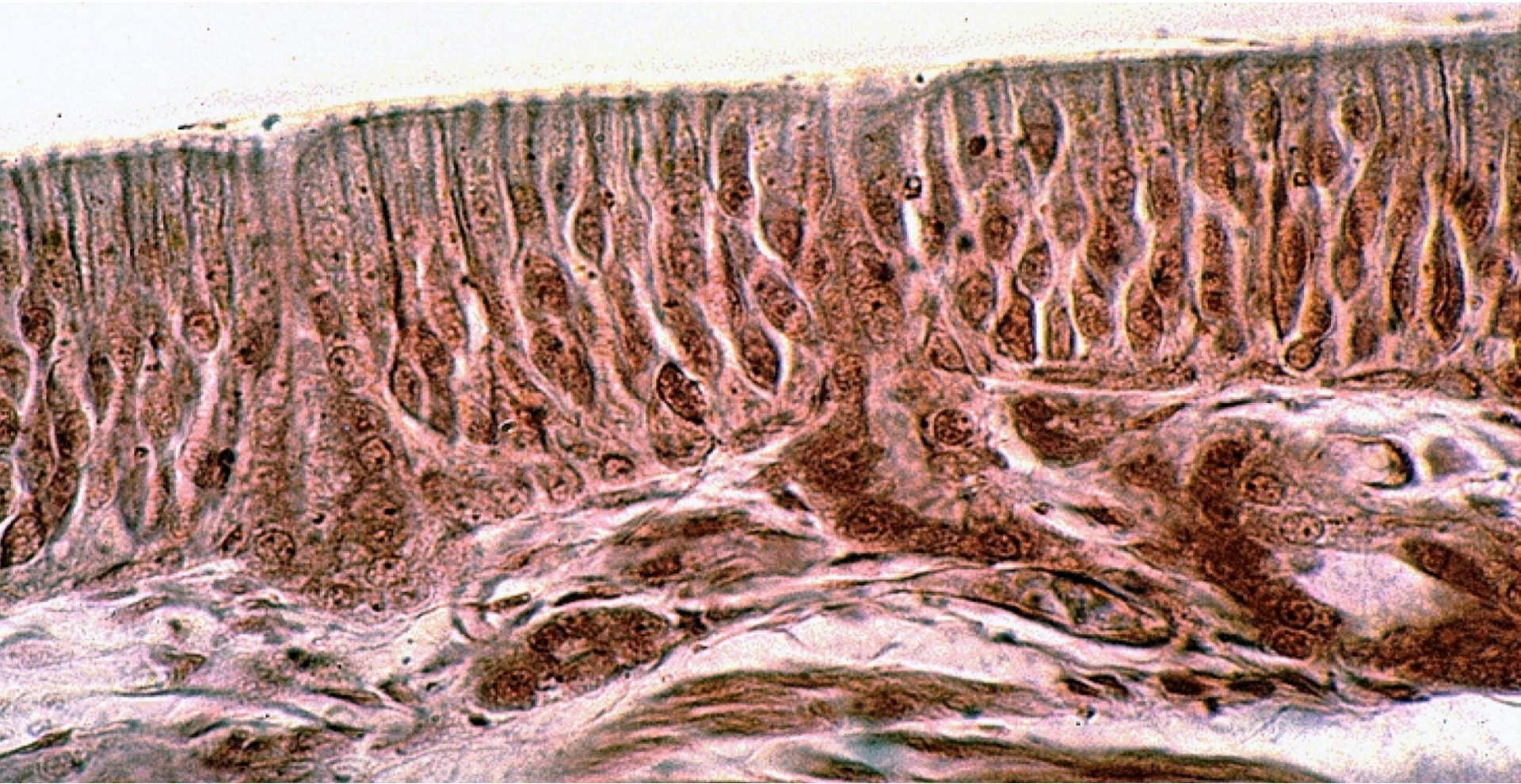
Other location : (Mesencephalic nucleus of trigeminal nerve )

**Rounded Neuron**





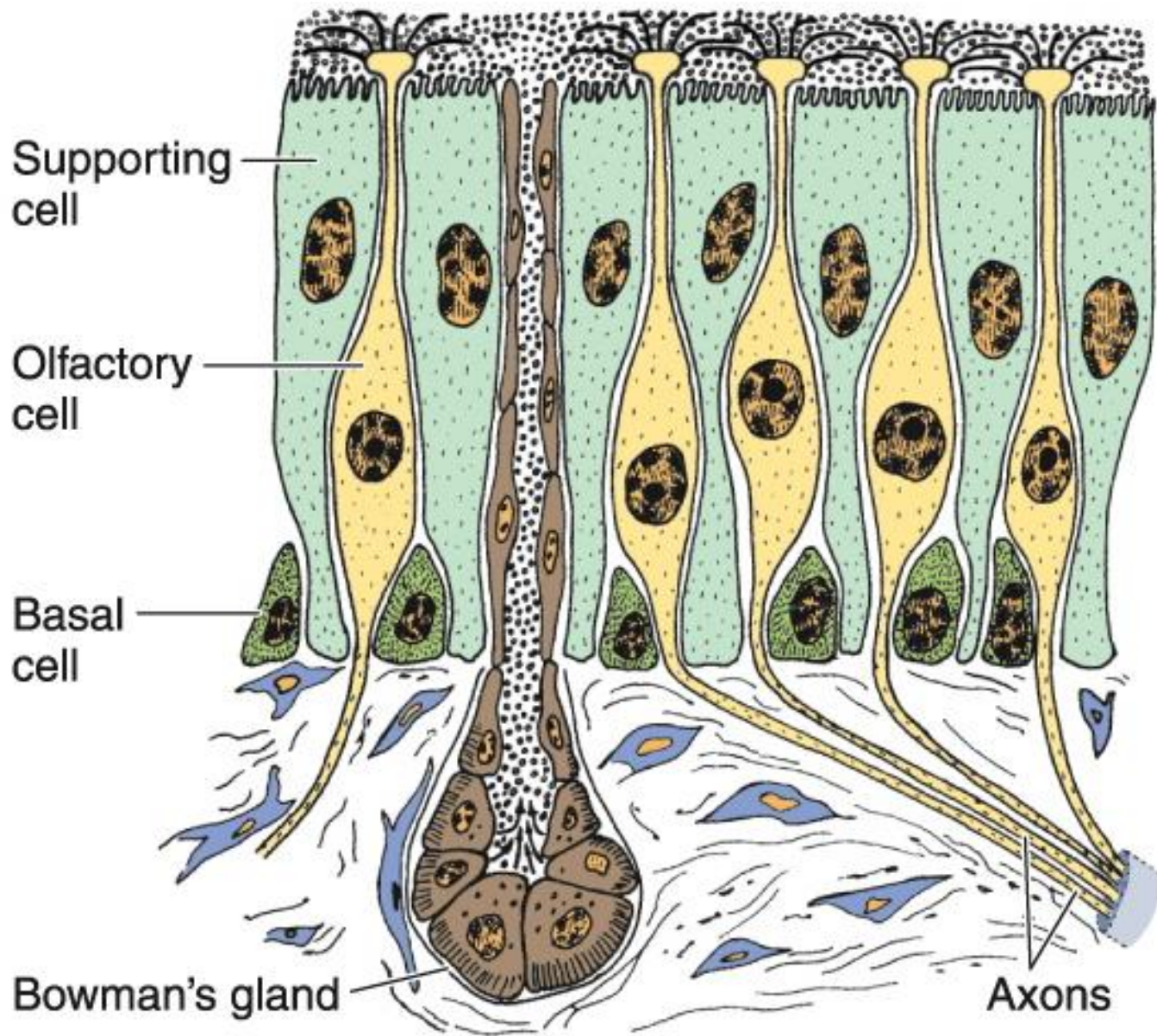
Unipolar neurons (in spinal ganglion)



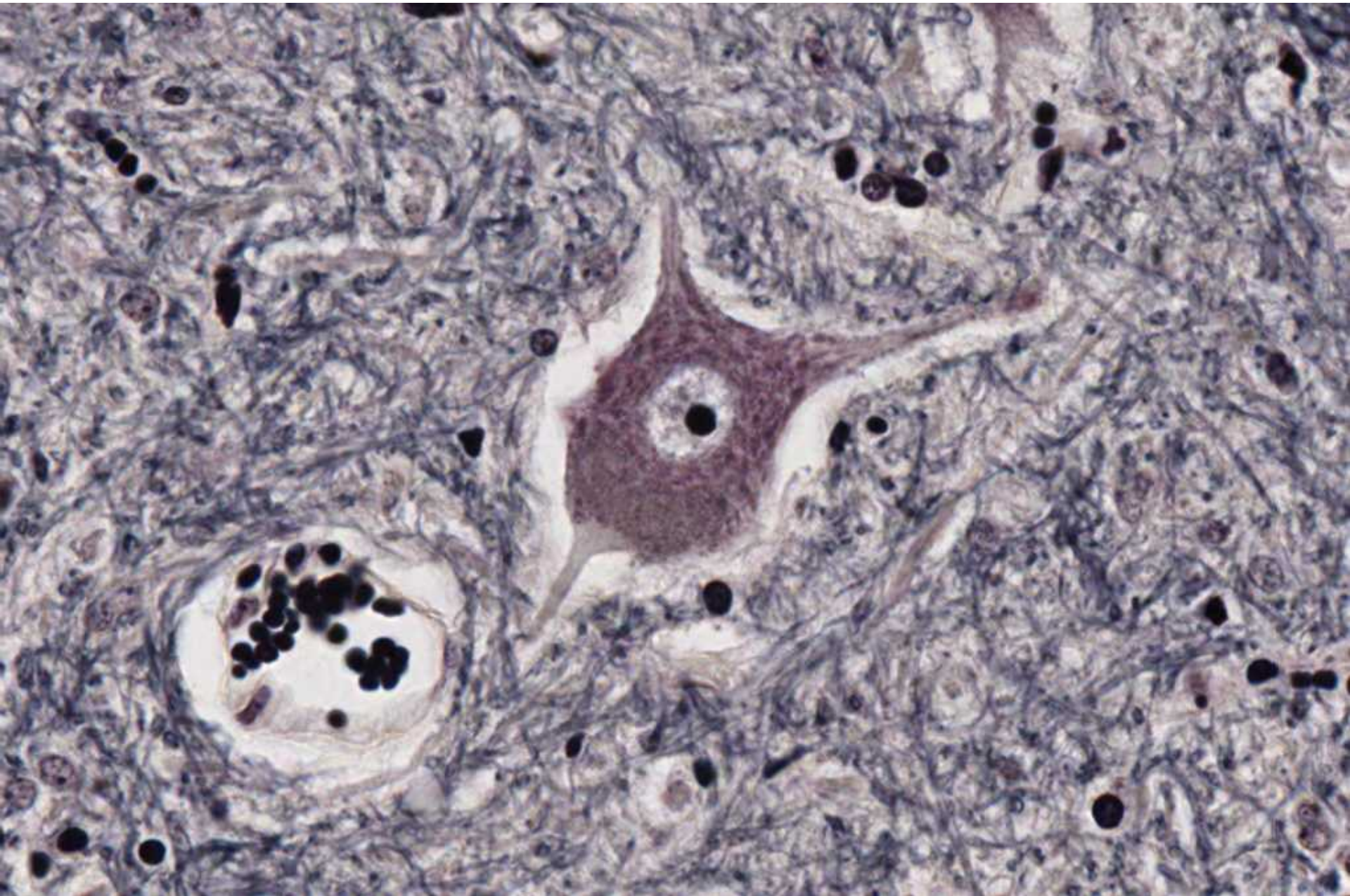
Bipolar neurons (in olfactory epithelium )

Other locations : retina

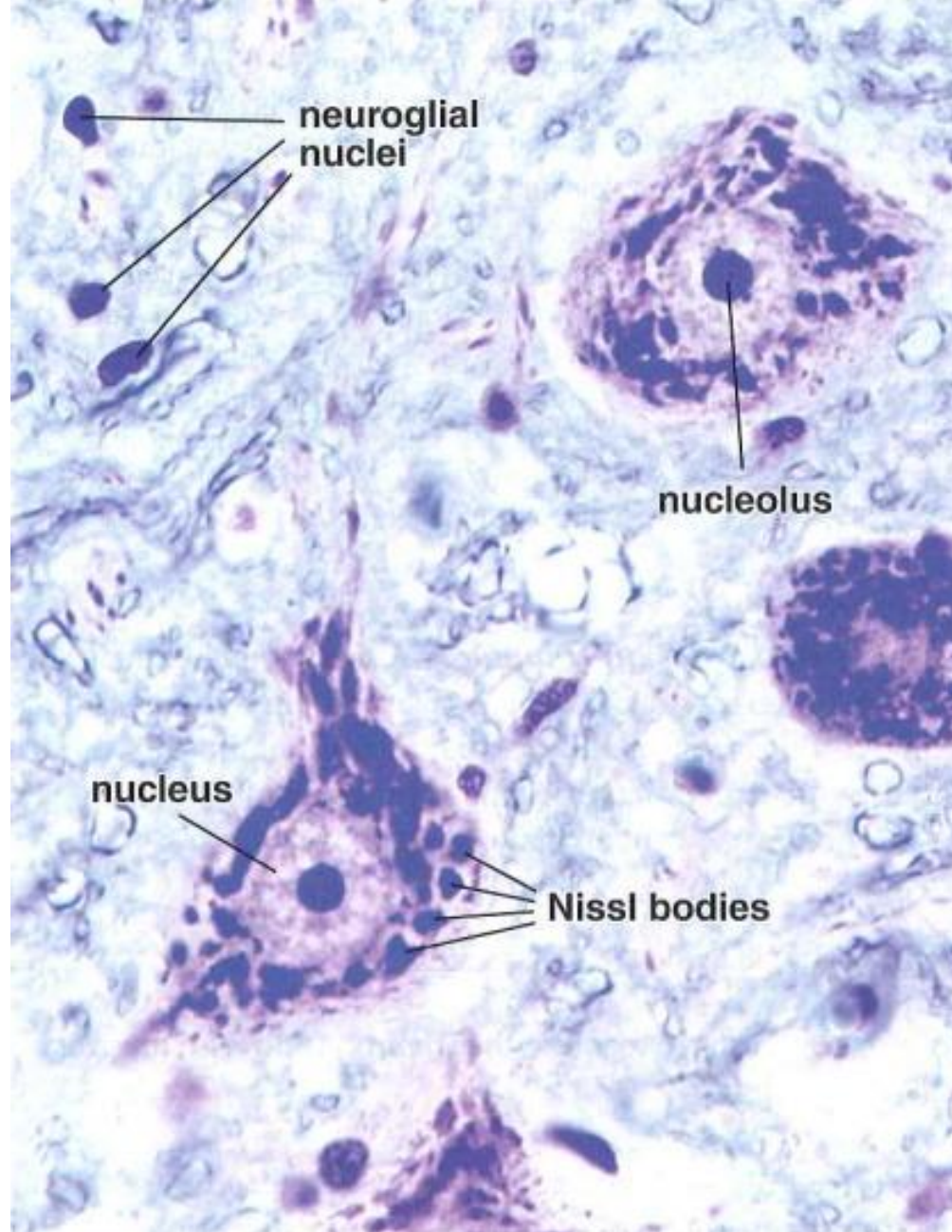
Spindle shape neuron



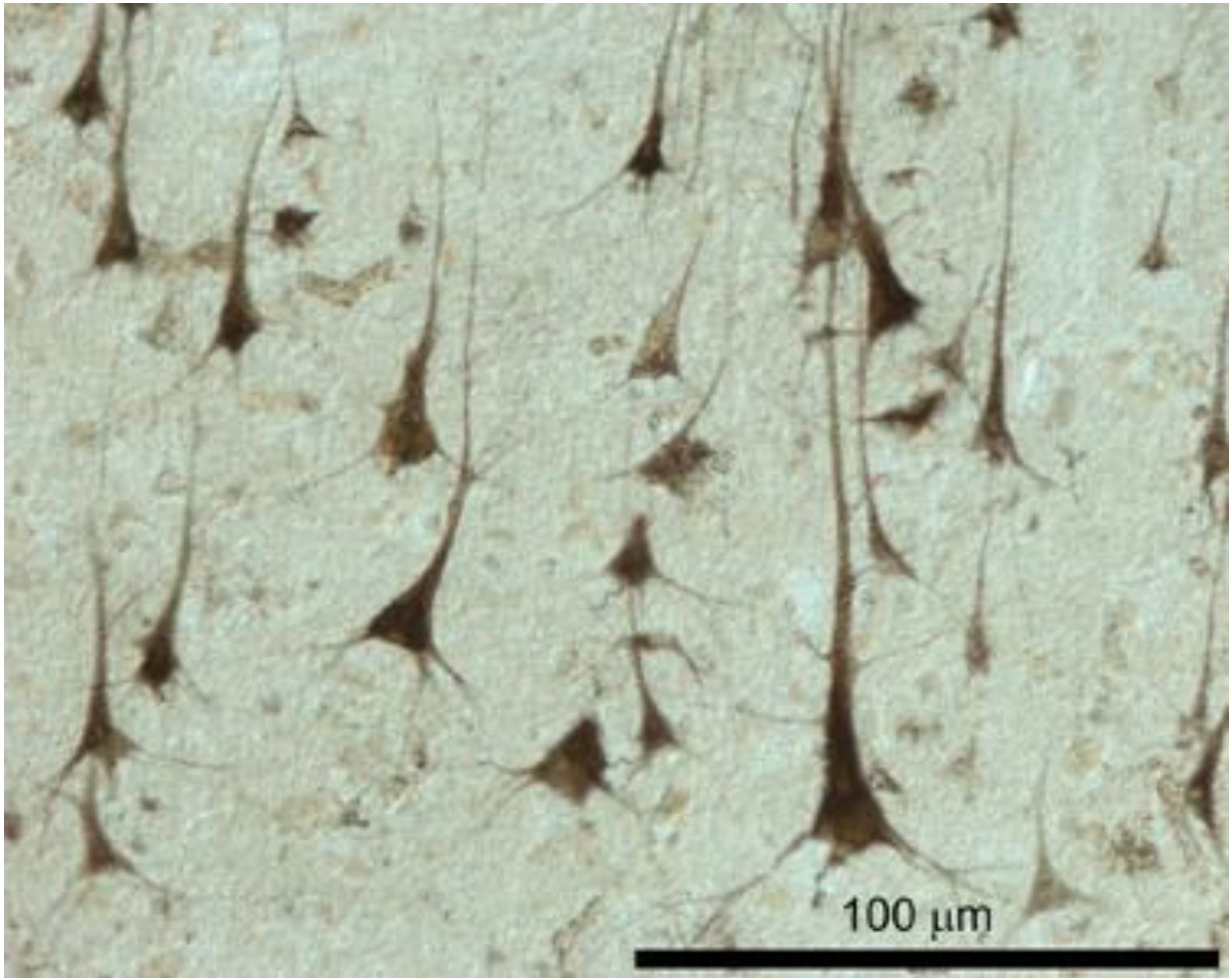
Bipolar neurons (in olfactory epithelium)



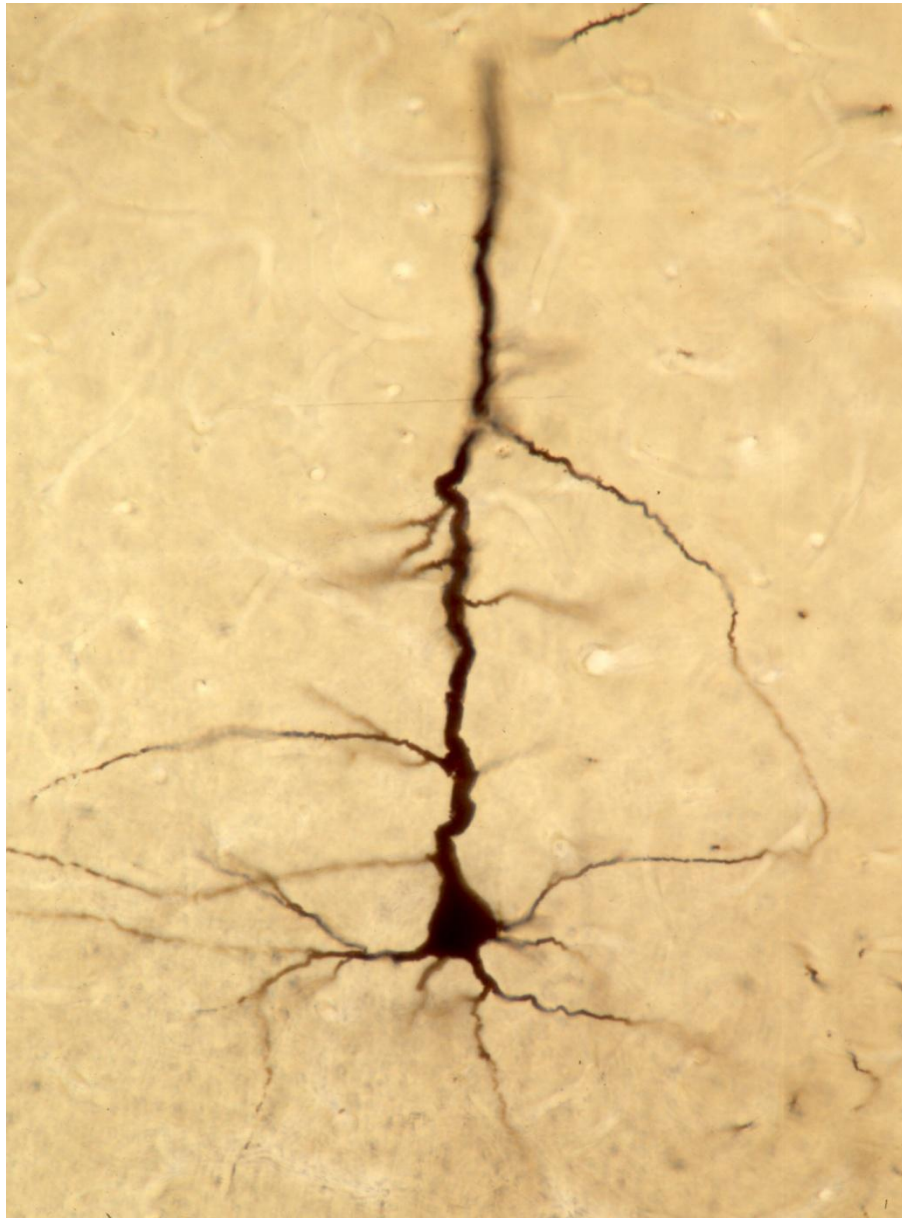
Multipolar stellate neuron (anterior horn cells of the spinal cord)



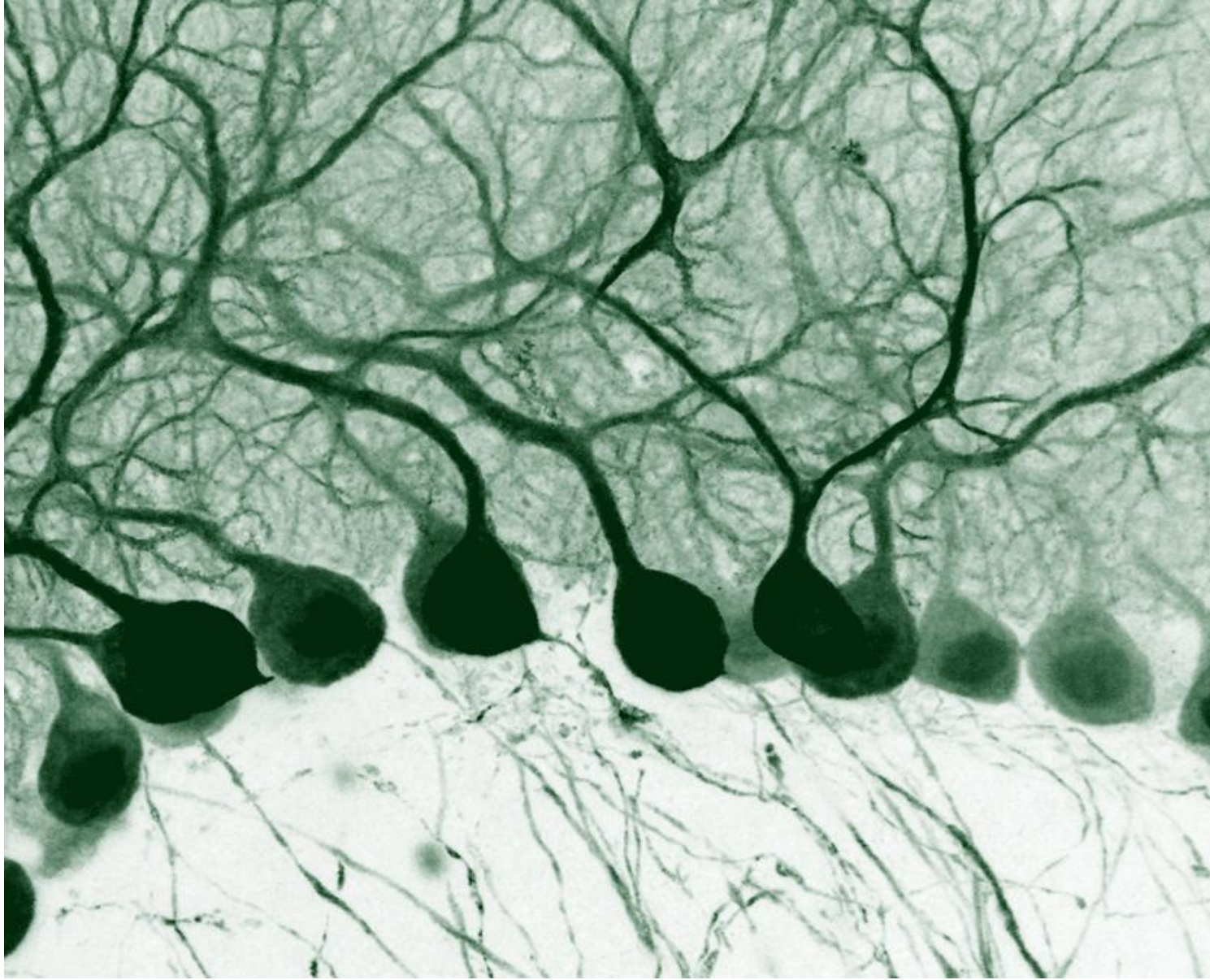
Multipolar stellate neurons (anterior horn cells of the spinal cord)



Multipolar pyramidal neurons (in cerebrum)



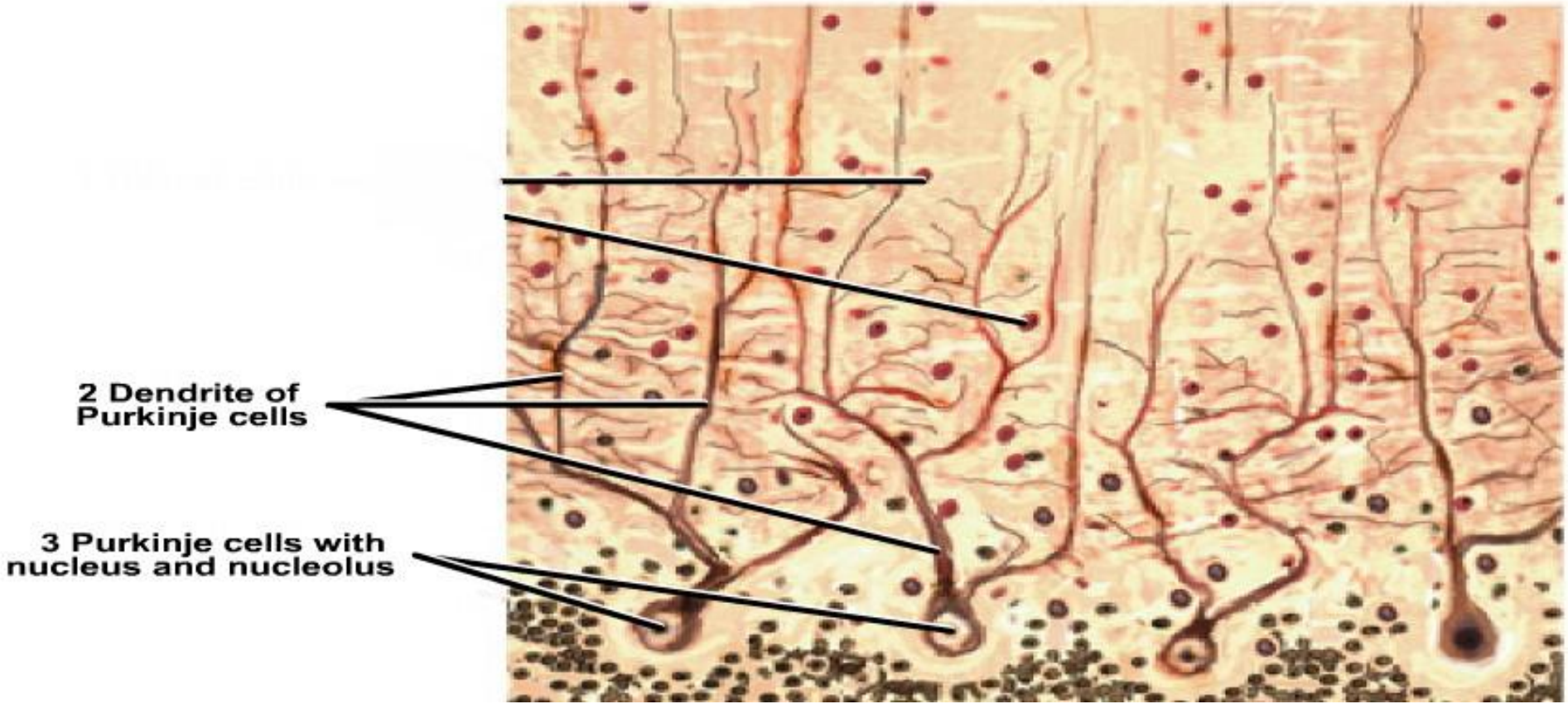
Multipolar pyramidal neuron (in cerebrum)



Multipolar pyriform neurons (Purkinje cells of cerebellum)

Pear shape neuron





Multipolar pyriform neurons (Purkinje cells of cerebellum)